

Data Path : Z:\VOASRV\HPCHEM1\MSVOA U\DATA\VU032820\
 Data File : VU037427.D
 Acq On : 28 Mar 2020 19:26
 Operator : JC/MD
 Sample : L2002-09
 Misc : 25.0mL/MSVOA U/WATER
 ALS Vial : 1 Sample Multiplier: 1

Instrument :
 MSVOA_U
 ClientSampleId :
 GAWH1

Quant Time: Mar 30 02:12:41 2020
 Quant Method : Z:\VOASRV\HPCHEM1\MSVOA_U\METHOD\SOMUTR032820WMA.M
 Quant Title : TRACE VOA SOM01.0
 QLast Update : Mon Mar 30 00:15:54 2020
 Response via : Initial Calibration

Internal Standards	R.T.	QIon	Response	Conc	Units	Dev(Min)
1) 1,4-Difluorobenzene	6.28	114	114713	5.00	ug/L	0.00
28) Chlorobenzene-d5	9.44	117	109312	5.00	ug/L	0.00
60) 1,4-Dichlorobenzene-d4	11.83	152	56501	5.00	ug/L	0.00

System Monitoring Compounds

4) Vinyl Chloride-d3	1.61	65	38101	4.50	ug/L	0.00
Spiked Amount	5.000	Range	40 - 130	Recovery	=	90.00%
7) Chloroethane-d5	1.93	69	32616	5.14	ug/L	0.00
Spiked Amount	5.000	Range	65 - 130	Recovery	=	102.80%
11) 1,1-Dichloroethene-d2	2.59	63	59813	3.62	ug/L	0.00
Spiked Amount	5.000	Range	60 - 125	Recovery	=	72.40%
20) 2-Butanone-d5	4.67	46	111913	48.49	ug/L	-0.02
Spiked Amount	50.000	Range	40 - 130	Recovery	=	96.98%
24) Chloroform-d	5.10	84	76927	4.59	ug/L	0.00
Spiked Amount	5.000	Range	70 - 125	Recovery	=	91.80%
26) 1,2-Dichloroethane-d4	5.74	65	43657	4.74	ug/L	0.00
Spiked Amount	5.000	Range	70 - 130	Recovery	=	94.80%
32) Benzene-d6	5.76	84	155324	4.92	ug/L	0.00
Spiked Amount	5.000	Range	70 - 125	Recovery	=	98.40%
36) 1,2-Dichloropropane-d6	6.72	67	50224	4.80	ug/L	0.00
Spiked Amount	5.000	Range	60 - 140	Recovery	=	96.00%
41) Toluene-d8	7.92	98	145508	4.86	ug/L	0.00
Spiked Amount	5.000	Range	70 - 130	Recovery	=	97.20%
43) trans-1,3-Dichloropropene-	8.20	79	22659	4.61	ug/L	0.00
Spiked Amount	5.000	Range	55 - 130	Recovery	=	92.20%
46) 2-Hexanone-d5	8.66	63	95976	49.11	ug/L	0.00
Spiked Amount	50.000	Range	45 - 130	Recovery	=	98.22%
57) 1,1,2,2-Tetrachloroethane-	10.77	84	40440	4.61	ug/L	0.00
Spiked Amount	5.000	Range	65 - 120	Recovery	=	92.20%
64) 1,2-Dichlorobenzene-d4	12.21	152	54470	4.90	ug/L	0.00
Spiked Amount	5.000	Range	80 - 120	Recovery	=	98.00%

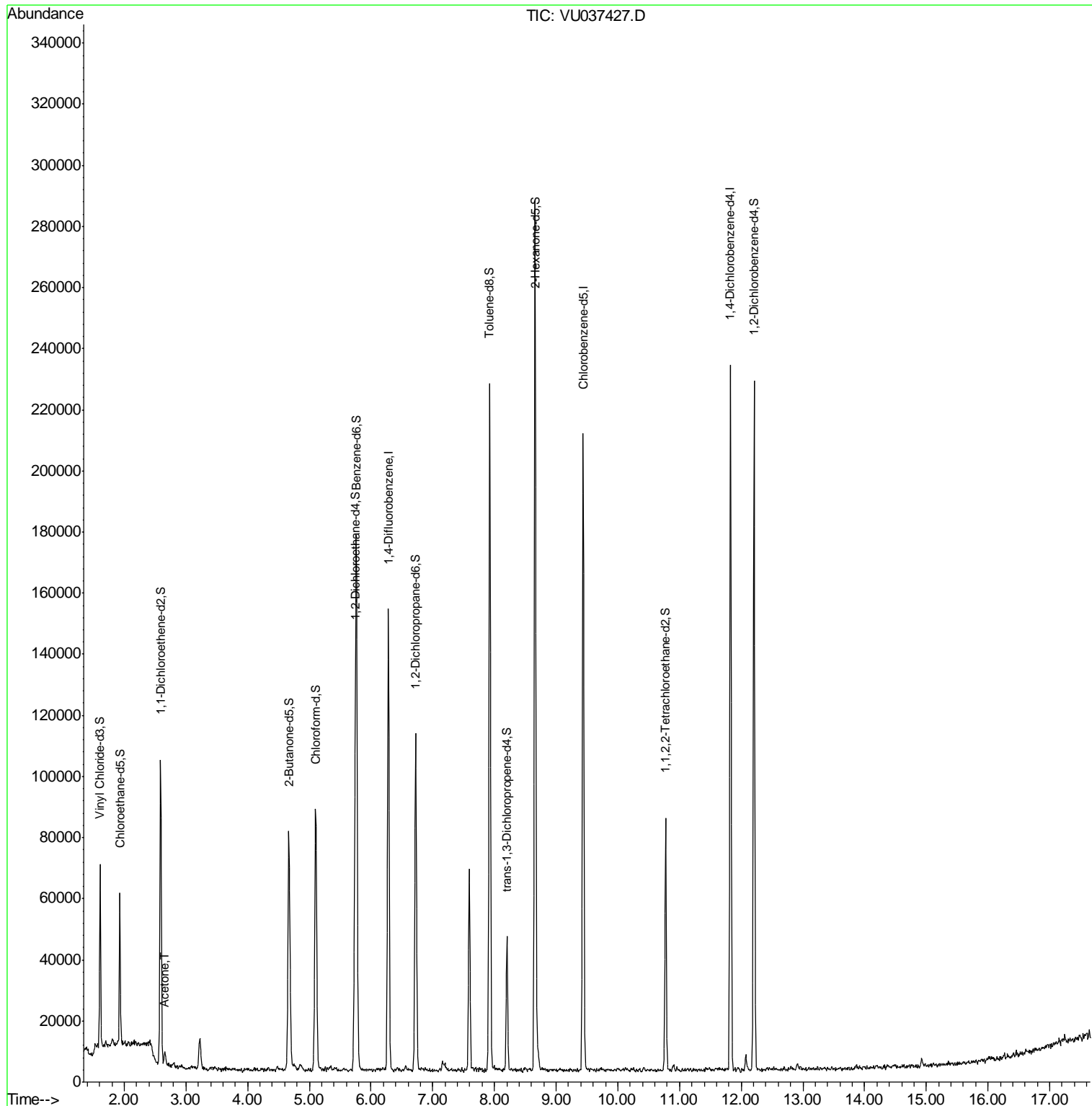
Target Compounds					Ovalue
13) Acetone	2.66	43	5632	4.247 ug/L	94

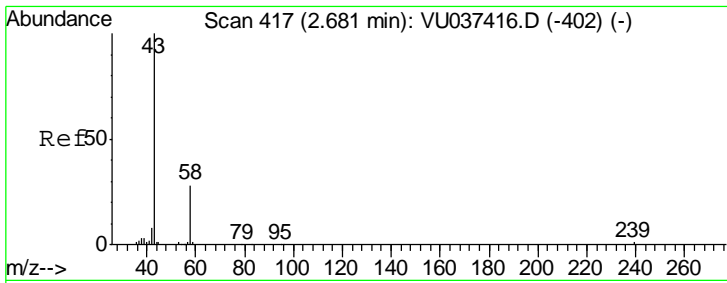
(#) = qualifier out of range (m) = manual integration (+) = signals summed

Data Path : Z:\VOASRV\HPCHEM1\MSVOA U\DATA\VU032820\
 Data File : VU037427.D
 Acq On : 28 Mar 2020 19:26
 Operator : JC/MD
 Sample : L2002-09
 Misc : 25.0mL/MSVOA U/WATER
 ALS Vial : 1 Sample Multiplier: 1

Instrument :
 MSVOA_U
 ClientSampled :
 GAWH1

Quant Time: Mar 30 02:12:41 2020
 Quant Method : Z:\VOASRV\HPCHEM1\MSVOA_U\METHOD\SOMUTR032820WMA.M
 Quant Title : TRACE VOA SOM01.0
 QLast Update : Mon Mar 30 00:15:54 2020
 Response via : Initial Calibration





#13
 Acetone
 Concen: 4.247 ug/L
 RT: 2.66 min Scan# 410
 Delta R.T. -0.02 min
 Lab File: VU037427.D
 Acq: 28 Mar 2020 19:26

Instrument :
 MSVOA_U
ClientSampled :
 GAWH1

Tot Ion: 43 Resp: 5632

Ion	Ratio	Lower	Upper
43	100		
58	36.6	0.0	66.0

