

Data Path : Z:\VOASRV\HPCHEM1\MSVOA U\DATA\VU032820\
 Data File : VU037435.D
 Acq On : 28 Mar 2020 22:43
 Operator : JC/MD
 Sample : L2002-17
 Misc : 25.0mL/MSVOA U/WATER
 ALS Vial : 1 Sample Multiplier: 1

Instrument :
 MSVOA_U
 ClientSampleId :
 GAWH9

Quant Time: Mar 30 03:03:51 2020
 Quant Method : Z:\VOASRV\HPCHEM1\MSVOA_U\METHOD\SOMUTR032820WMA.M
 Quant Title : TRACE VOA SOM01.0
 QLast Update : Mon Mar 30 00:15:54 2020
 Response via : Initial Calibration

Internal Standards	R.T.	QIon	Response	Conc	Units	Dev(Min)
1) 1,4-Difluorobenzene	6.28	114	108644	5.00	ug/L	0.00
28) Chlorobenzene-d5	9.44	117	100329	5.00	ug/L	0.00
60) 1,4-Dichlorobenzene-d4	11.83	152	51731	5.00	ug/L	0.00

System Monitoring Compounds

4) Vinyl Chloride-d3	1.61	65	36750	4.58	ug/L	0.00
Spiked Amount	5.000	Range	40 - 130	Recovery	=	91.60%
7) Chloroethane-d5	1.93	69	32077	5.34	ug/L	0.00
Spiked Amount	5.000	Range	65 - 130	Recovery	=	106.80%
11) 1,1-Dichloroethene-d2	2.59	63	58396	3.73	ug/L	0.00
Spiked Amount	5.000	Range	60 - 125	Recovery	=	74.60%
20) 2-Butanone-d5	4.67	46	106694	48.81	ug/L	-0.02
Spiked Amount	50.000	Range	40 - 130	Recovery	=	97.62%
24) Chloroform-d	5.11	84	66717	4.21	ug/L	0.00
Spiked Amount	5.000	Range	70 - 125	Recovery	=	84.20%
26) 1,2-Dichloroethane-d4	5.74	65	42642	4.89	ug/L	0.00
Spiked Amount	5.000	Range	70 - 130	Recovery	=	97.80%
32) Benzene-d6	5.76	84	147322	5.08	ug/L	0.00
Spiked Amount	5.000	Range	70 - 125	Recovery	=	101.60%
36) 1,2-Dichloropropane-d6	6.72	67	47947	5.00	ug/L	0.00
Spiked Amount	5.000	Range	60 - 140	Recovery	=	100.00%
41) Toluene-d8	7.93	98	137064	4.98	ug/L	0.00
Spiked Amount	5.000	Range	70 - 130	Recovery	=	99.60%
43) trans-1,3-Dichloropropene-	8.20	79	20906	4.63	ug/L	0.00
Spiked Amount	5.000	Range	55 - 130	Recovery	=	92.60%
46) 2-Hexanone-d5	8.66	63	92972	51.84	ug/L	0.00
Spiked Amount	50.000	Range	45 - 130	Recovery	=	103.68%
57) 1,1,2,2-Tetrachloroethane-	10.77	84	39308	4.88	ug/L	0.00
Spiked Amount	5.000	Range	65 - 120	Recovery	=	97.60%
64) 1,2-Dichlorobenzene-d4	12.21	152	50517	4.96	ug/L	0.00
Spiked Amount	5.000	Range	80 - 120	Recovery	=	99.20%

Target Compounds

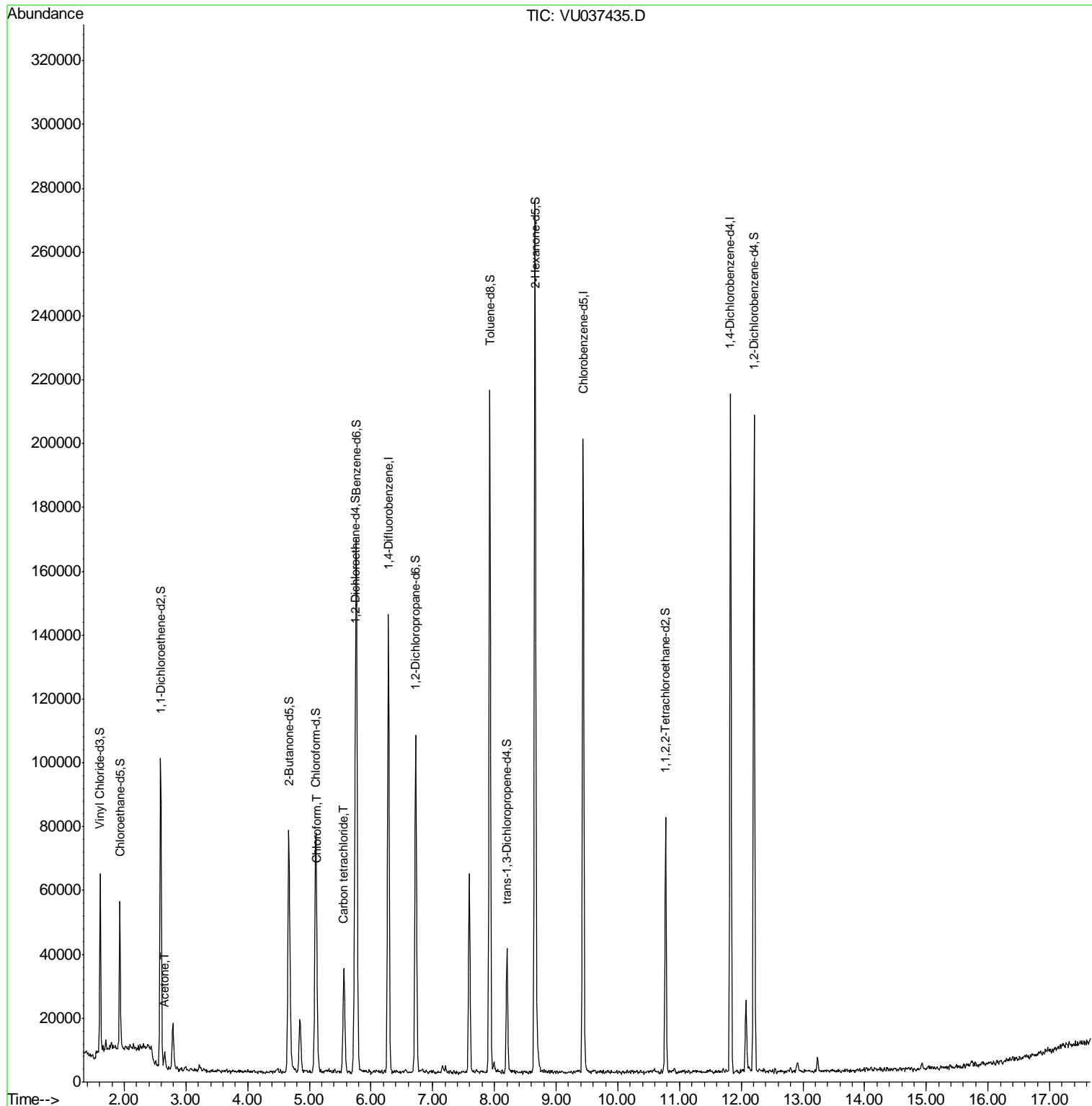
Target Compounds	R.T.	QIon	Response	Conc	Units	Ovalue
13) Acetone	2.66	43	5416	4.312	ug/L	92
25) Chloroform	5.13	83	7289	0.496	ug/L	89
31) Carbon tetrachloride	5.56	117	22261	2.045	ug/L	98

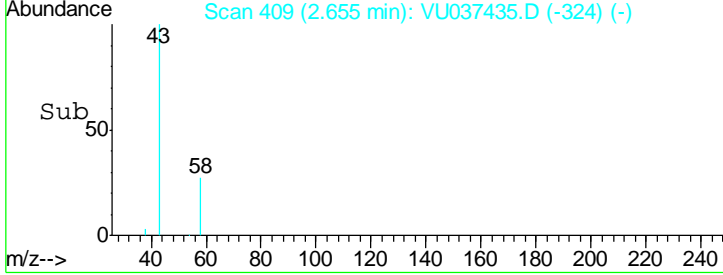
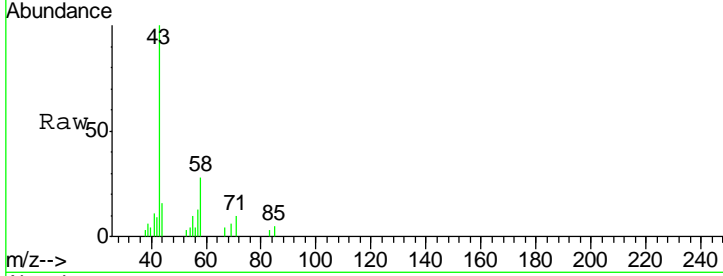
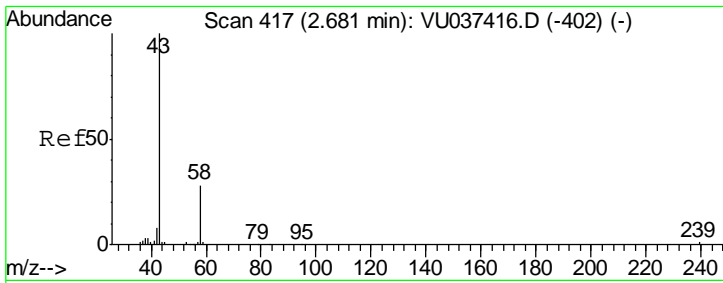
(#) = qualifier out of range (m) = manual integration (+) = signals summed

Data Path : Z:\VOASRV\HPCHEM1\MSVOA U\DATA\VU032820\
 Data File : VU037435.D
 Acq On : 28 Mar 2020 22:43
 Operator : JC/MD
 Sample : L2002-17
 Misc : 25.0mL/MSVOA U/WATER
 ALS Vial : 1 Sample Multiplier: 1

Instrument :
 MSVOA_U
 ClientSampled :
 GAWH9

Quant Time: Mar 30 03:03:51 2020
 Quant Method : Z:\VOASRV\HPCHEM1\MSVOA_U\METHOD\SOMUTR032820WMA.M
 Quant Title : TRACE VOA SOM01.0
 QLast Update : Mon Mar 30 00:15:54 2020
 Response via : Initial Calibration

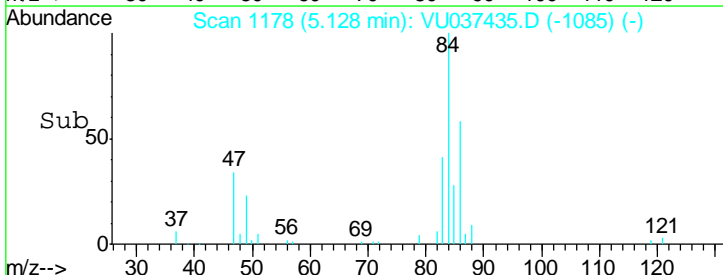
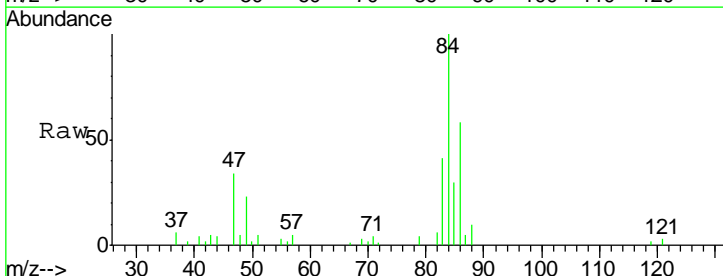
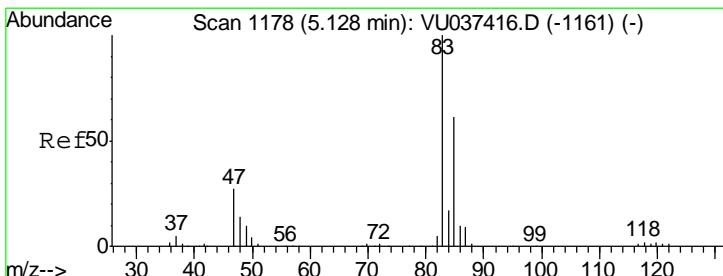
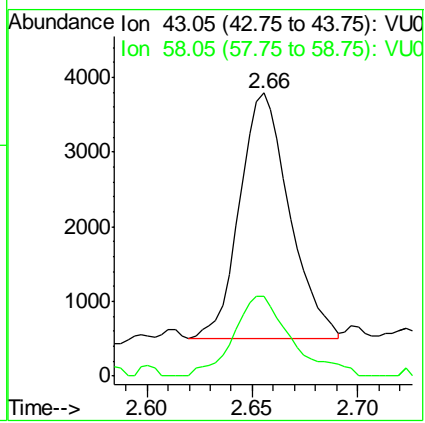




#13
 Acetone
 Concen: 4.312 ug/L
 RT: 2.66 min Scan# 409
 Delta R.T. -0.03 min
 Lab File: VU037435.D
 Acq: 28 Mar 2020 22:43

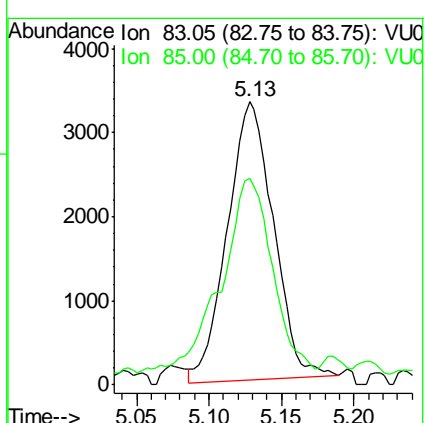
Instrument : MSVOA_U
 ClientSampled : GAWH9

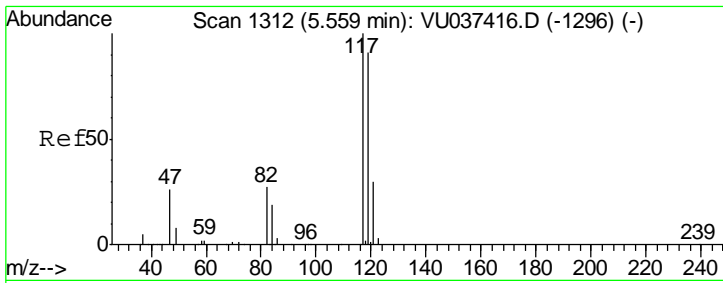
Tgt Ion	Resp	Lower	Upper
43	100		
58	37.7	0.0	66.0



#25
 Chloroform
 Concen: 0.496 ug/L
 RT: 5.13 min Scan# 1178
 Delta R.T. 0.00 min
 Lab File: VU037435.D
 Acq: 28 Mar 2020 22:43

Tgt Ion	Resp	Lower	Upper
83	100		
85	73.2	45.4	84.4





#31
 Carbon tetrachloride
 Concen: 2.045 ug/L
 RT: 5.56 min Scan# 1312
 Delta R.T. 0.00 min
 Lab File: VU037435.D
 Acq: 28 Mar 2020 22:43

Instrument :
 MSVOA_U
 ClientSampled :
 GAWH9

Tot Ion:117 Resp: 22261
 Ion Ratio Lower Upper
 117 100
 119 94.7 77.7 116.5

