

Data Path : Z:\VOASRV\HPCHEM1\MSVOA U\DATA\VU032820\  
 Data File : VU037424.D  
 Acq On : 28 Mar 2020 18:11  
 Operator : JC/MD  
 Sample : L2002-06  
 Misc : 25.0mL/MSVOA U/WATER  
 ALS Vial : 1 Sample Multiplier: 1

Instrument :  
 MSVOA\_U  
 ClientSampled :  
 GAWG8

Integration Parameters: rteint.p  
 Integrator: RTE  
 Smoothing : ON  
 Sampling : 1  
 Start Thrs: 0.1  
 Stop Thrs : 0

Filtering: 5  
 Min Area: 3 % of largest Peak  
 Max Peaks: 100  
 Peak Location: TOP

If leading or trailing edge < 100 prefer < Baseline drop else tangent >  
 Peak separation: 5

Method : Z:\VOASRV\HPCHEM1\MSVOA\_U\METHOD\SOMUTR032820WMA.M  
 Title : TRACE VOA SOM01.0

Signal : TIC

peak #	R.T. min	first scan	max scan	last scan	PK TY	peak height	corr. area	corr. % max.	% of total
1	1.610	77	84	94	rVB	59366	65479	5.31%	1.208%
2	1.929	176	183	193	rVB	44303	57317	4.65%	1.058%
3	2.591	378	389	400	rBV	101301	163803	13.28%	3.022%
4	2.655	400	409	427	rVB	70267	118180	9.58%	2.181%
5	2.983	497	511	527	rBV	55890	100096	8.12%	1.847%
6	4.668	1019	1035	1053	rBV	81384	203517	16.50%	3.755%
7	4.845	1073	1090	1111	rBV	581174	1233267	100.00%	22.756%
8	5.105	1156	1171	1192	rVB3	81067	193756	15.71%	3.575%
9	5.562	1303	1313	1323	rBV3	7774	16555	1.34%	0.305%
10	5.761	1352	1375	1394	rBV2	172103	440331	35.70%	8.125%
11	6.282	1524	1537	1554	rVB	148452	275490	22.34%	5.083%
12	6.723	1661	1674	1689	rBV	108864	208724	16.92%	3.851%
13	7.594	1931	1945	1965	rBV	65615	117230	9.51%	2.163%
14	7.925	2033	2048	2061	rBV	224546	385956	31.30%	7.121%
15	8.205	2123	2135	2149	rBV2	43845	71725	5.82%	1.323%
16	8.658	2262	2276	2302	rBV	274546	489005	39.65%	9.023%
17	9.439	2506	2519	2537	rBV	207075	346100	28.06%	6.386%
18	10.774	2920	2934	2946	rBV	85215	132797	10.77%	2.450%
19	11.825	3250	3261	3277	rVB	221011	352528	28.58%	6.505%
20	12.073	3325	3338	3351	rBV	49790	87865	7.12%	1.621%
21	12.208	3367	3380	3396	rVB	220471	359894	29.18%	6.641%

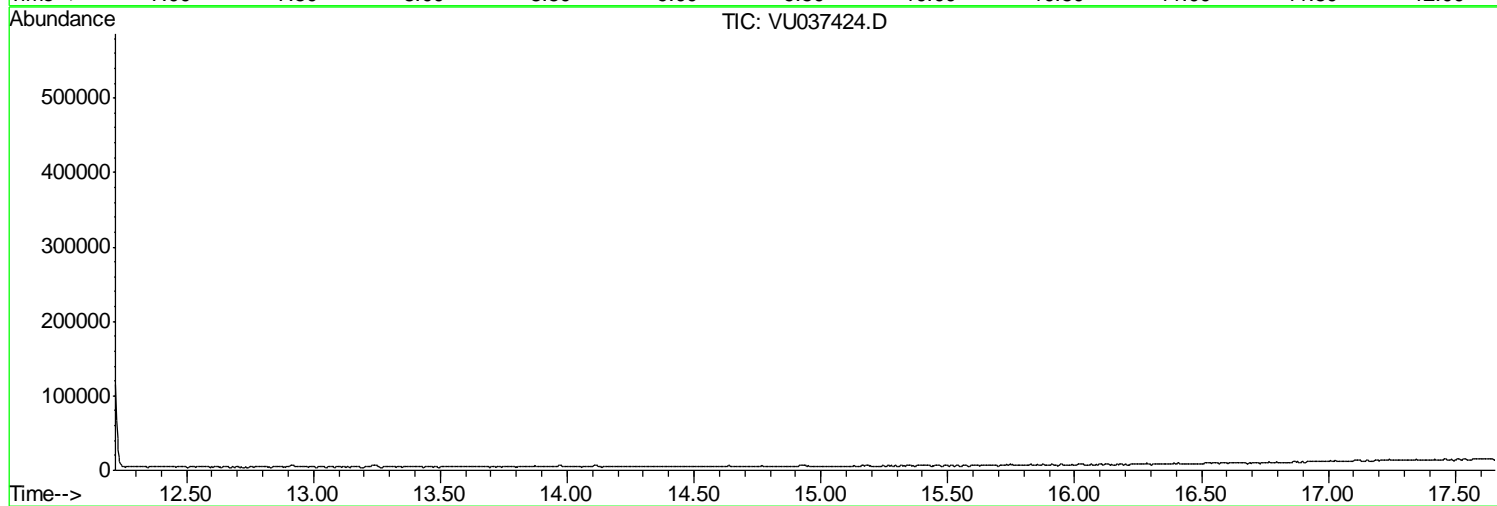
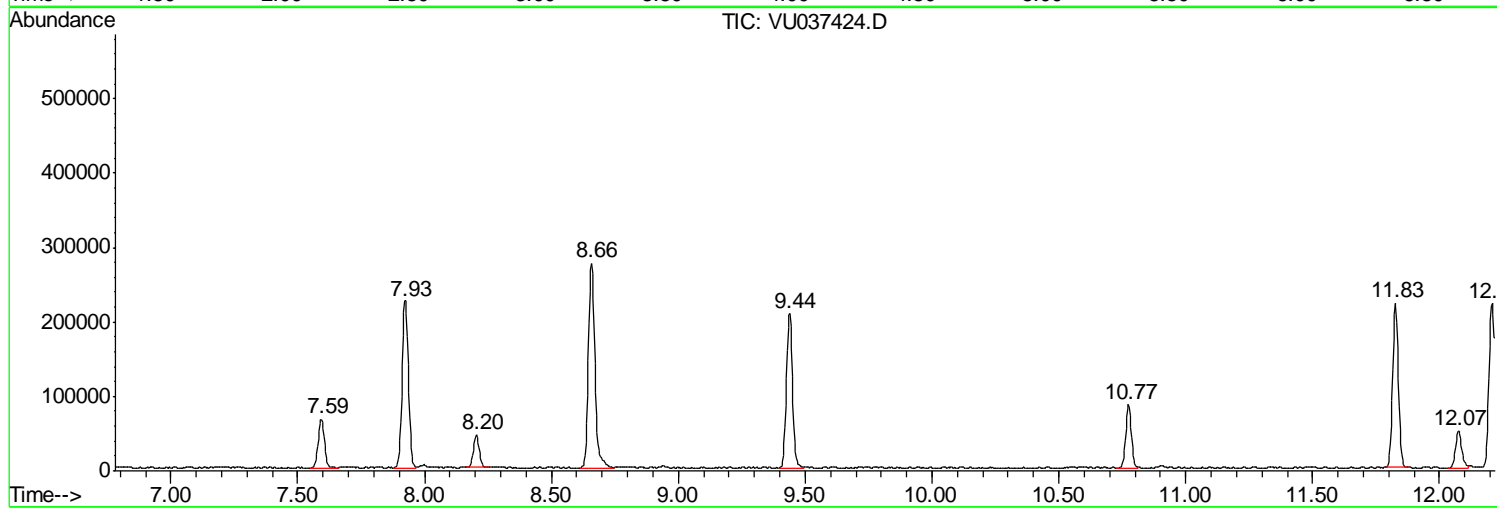
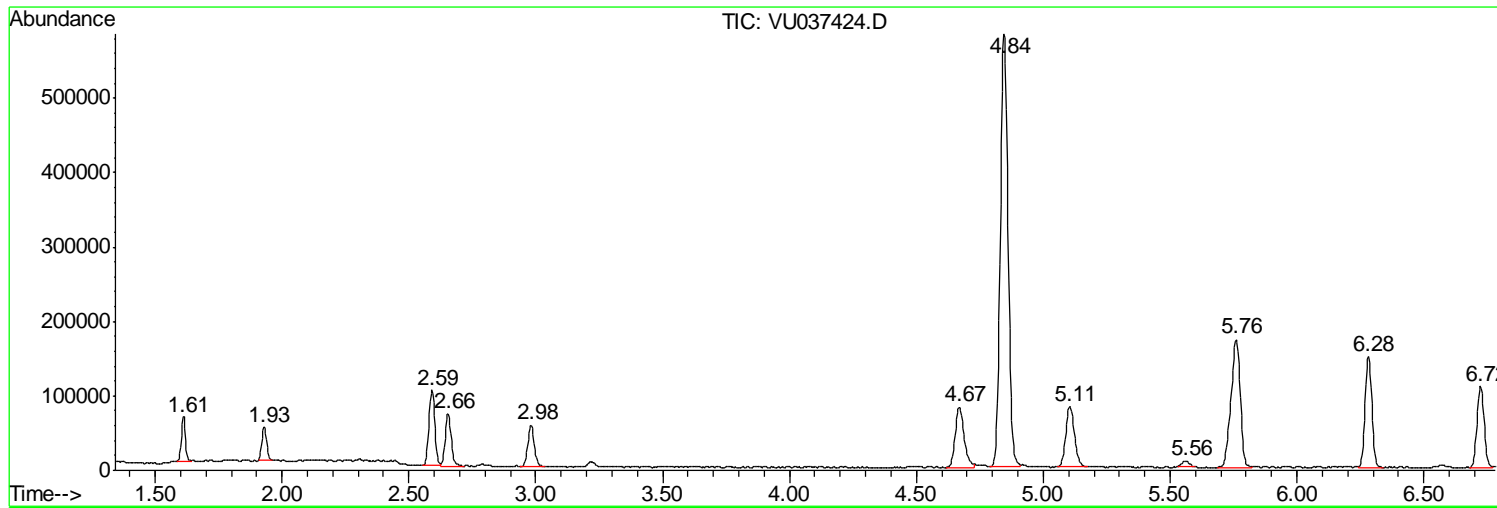
Sum of corrected areas: 5419615

Data Path : Z:\VOASRV\HPCHEM1\MSVOA U\DATA\VU032820\  
Data File : VU037424.D  
Acq On : 28 Mar 2020 18:11  
Operator : JC/MD  
Sample : L2002-06  
Misc : 25.0mL/MSVOA U/WATER  
ALS Vial : 1 Sample Multiplier: 1

Instrument :  
MSVOA\_U  
ClientSampled :  
GAWG8

Quant Method : Z:\VOASRV\HPCHEM1\MSVOA\_U\METHOD\SOMUTR032820WMA.M  
Quant Title : TRACE VOA SOM01.0

TIC Library : C:\DATABASE\NIST11.L  
TIC Integration Parameters: LSCINT.P



Data Path : Z:\VOASRV\HPCHEM1\MSVOA U\DATA\VU032820\  
 Data File : VU037424.D  
 Acq On : 28 Mar 2020 18:11  
 Operator : JC/MD  
 Sample : L2002-06  
 Misc : 25.0mL/MSVOA U/WATER  
 ALS Vial : 1 Sample Multiplier: 1

Instrument :  
 MSVOA\_U  
 ClientSampled :  
 GAWG8

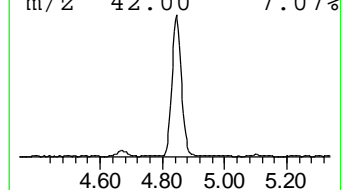
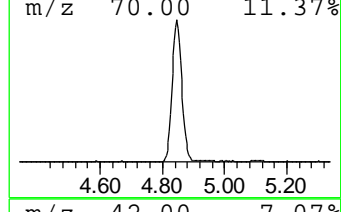
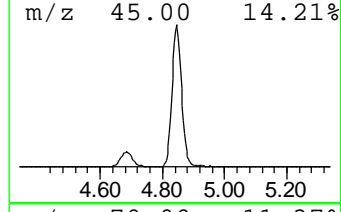
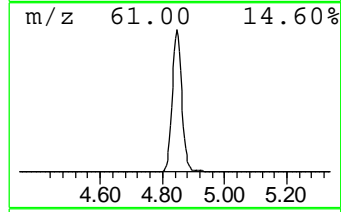
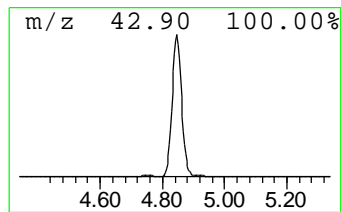
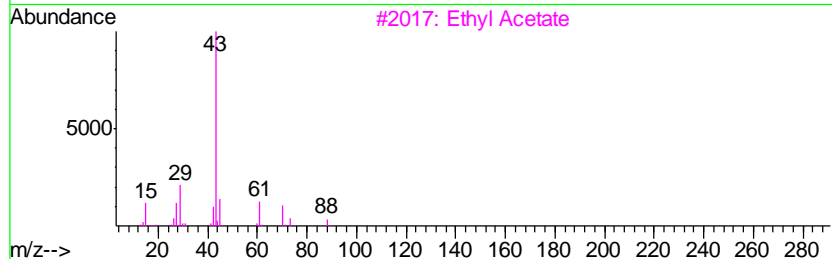
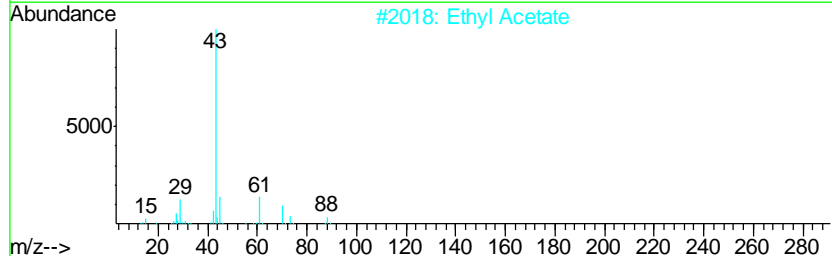
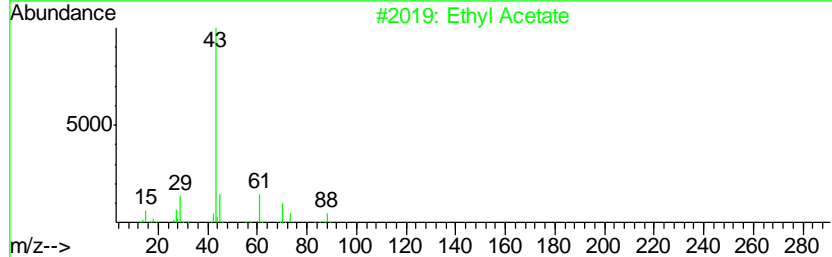
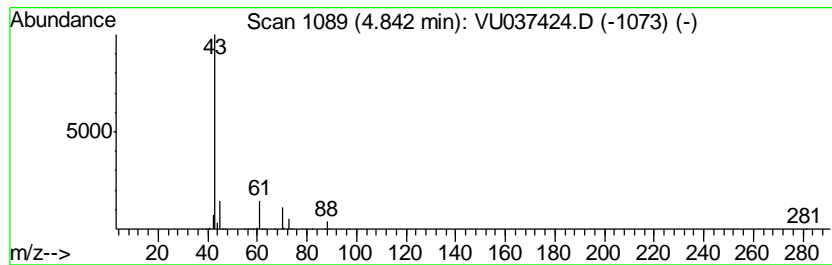
Quant Method : Z:\VOASRV\HPCHEM1\MSVOA\_U\METHOD\SOMUTR032820WMA.M  
 Quant Title : TRACE VOA SOM01.0

TIC Library : C:\DATABASE\NIST11.L  
 TIC Integration Parameters: LSCINT.P

\*\*\*\*\*  
 Peak Number 1 Ethyl Acetate Concentration Rank 1

R.T.	EstConc	Area	Relative to ISTD	R.T.
4.84	22.38 ug/L	1233270	1,4-Difluorobenzene	6.28

Hit#	of	Tentative ID	MW	MolForm	CAS#	Qual
1	5	Ethyl Acetate	88	C4H8O2	000141-78-6	91
2		Ethyl Acetate	88	C4H8O2	000141-78-6	86
3		Ethyl Acetate	88	C4H8O2	000141-78-6	86
4		Ethyl Acetate	88	C4H8O2	000141-78-6	86
5		CH3C(O)CH2CH2OH	88	C4H8O2	000590-90-9	53



Data Path : Z:\VOASRV\HPCHEM1\MSVOA U\DATA\VU032820\  
 Data File : VU037424.D  
 Acq On : 28 Mar 2020 18:11  
 Operator : JC/MD  
 Sample : L2002-06  
 Misc : 25.0mL/MSVOA U/WATER  
 ALS Vial : 1 Sample Multiplier: 1

Instrument :  
 MSVOA\_U  
 ClientSampled :  
 GAWG8

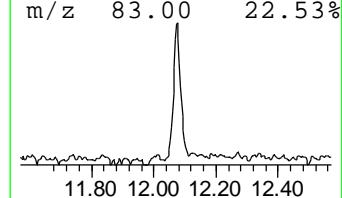
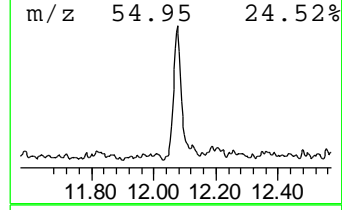
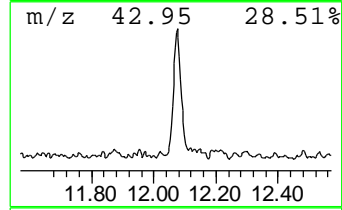
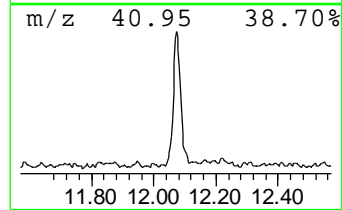
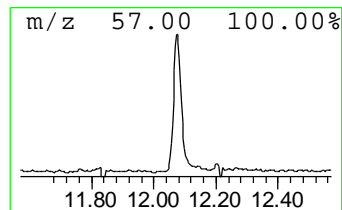
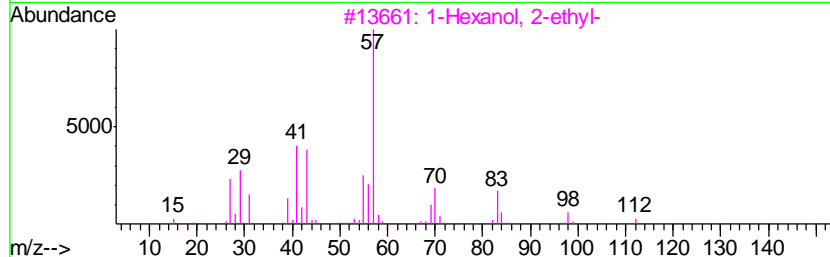
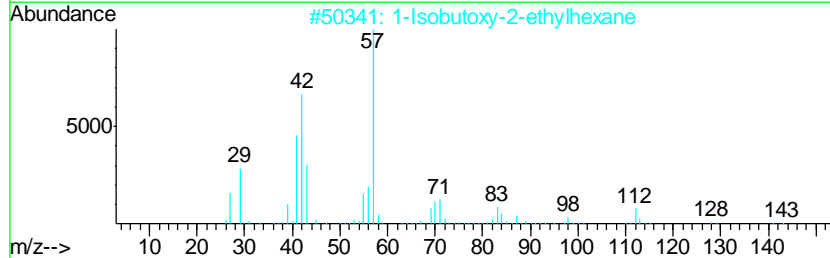
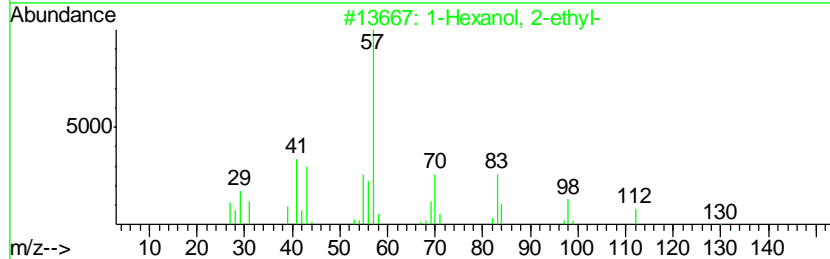
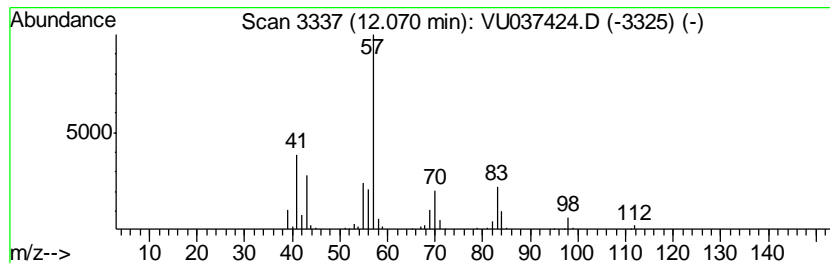
Quant Method : Z:\VOASRV\HPCHEM1\MSVOA\_U\METHOD\SOMUTR032820WMA.M  
 Quant Title : TRACE VOA SOM01.0

TIC Library : C:\DATABASE\NIST11.L  
 TIC Integration Parameters: LSCINT.P

\*\*\*\*\*  
 Peak Number 3 1-Hexanol, 2-ethyl- Concentration Rank 3

R.T.	EstConc	Area	Relative to ISTD	R.T.
12.07	1.25 ug/L	87865	1,4-Dichlorobenzene-d4	11.83

Hit#	of	Tentative ID	MW	MolForm	CAS#	Qual
1	5	1-Hexanol, 2-ethyl-	130	C8H18O	000104-76-7	83
2		1-Isobutoxy-2-ethylhexane	186	C12H26O	1000139-90-3	72
3		1-Hexanol, 2-ethyl-	130	C8H18O	000104-76-7	72
4		1-Hexanol, 2-ethyl-	130	C8H18O	000104-76-7	72
5		1-Hexanol, 2-ethyl-	130	C8H18O	000104-76-7	64



Data Path : Z:\VOASRV\HPCHEM1\MSVOA\_U\DATA\VU032820\  
Data File : VU037424.D  
Acq On : 28 Mar 2020 18:11  
Operator : JC/MD  
Sample : L2002-06  
Misc : 25.0mL/MSVOA\_U/WATER  
ALS Vial : 1 Sample Multiplier: 1

Instrument :  
MSVOA\_U  
ClientSampleId :  
GAWG8

Quant Method : Z:\VOASRV\HPCHEM1\MSVOA\_U\METHOD\SOMUTR032820WMA.M  
Quant Title : TRACE VOA SOM01.0

TIC Library : C:\DATABASE\NIST11.L  
TIC Integration Parameters: LSCINT.P

TIC Top Hit name	RT	EstConc	Units	Response	--Internal Standard--			
					#	RT	Resp	Conc
Ethyl Acetate	4.84	22.4	ug/L	1233270	1	6.28	275490	5.0
1-Hexanol, 2-ethyl-	12.07	1.3	ug/L	87865	3	11.83	352528	5.0