

Data Path : Z:\voasrv\HPCHEM1\MSVOA_U\Data\VU032825\
 Data File : VU063318.D
 Acq On : 28 Mar 2025 10:44
 Operator : MD/SY
 Sample : VSTDCCC0.5
 Misc : 25mL/MSVOA_U/WATER
 ALS Vial : 2 Sample Multiplier: 1

Instrument :
 MSVOA_U
 ClientSampleId :
 VSTD0.5111

Quant Time: Apr 01 09:59:42 2025
 Quant Method : Z:\voasrv\HPCHEM1\MSVOA_U\Method\SFAMUSIM031925.M
 Quant Title : TRACE VOA SOM01.0
 QLast Update : Mon Mar 31 15:42:06 2025
 Response via : Initial Calibration

Compound	R.T.	QIon	Response	Conc	Units	Dev(Min)

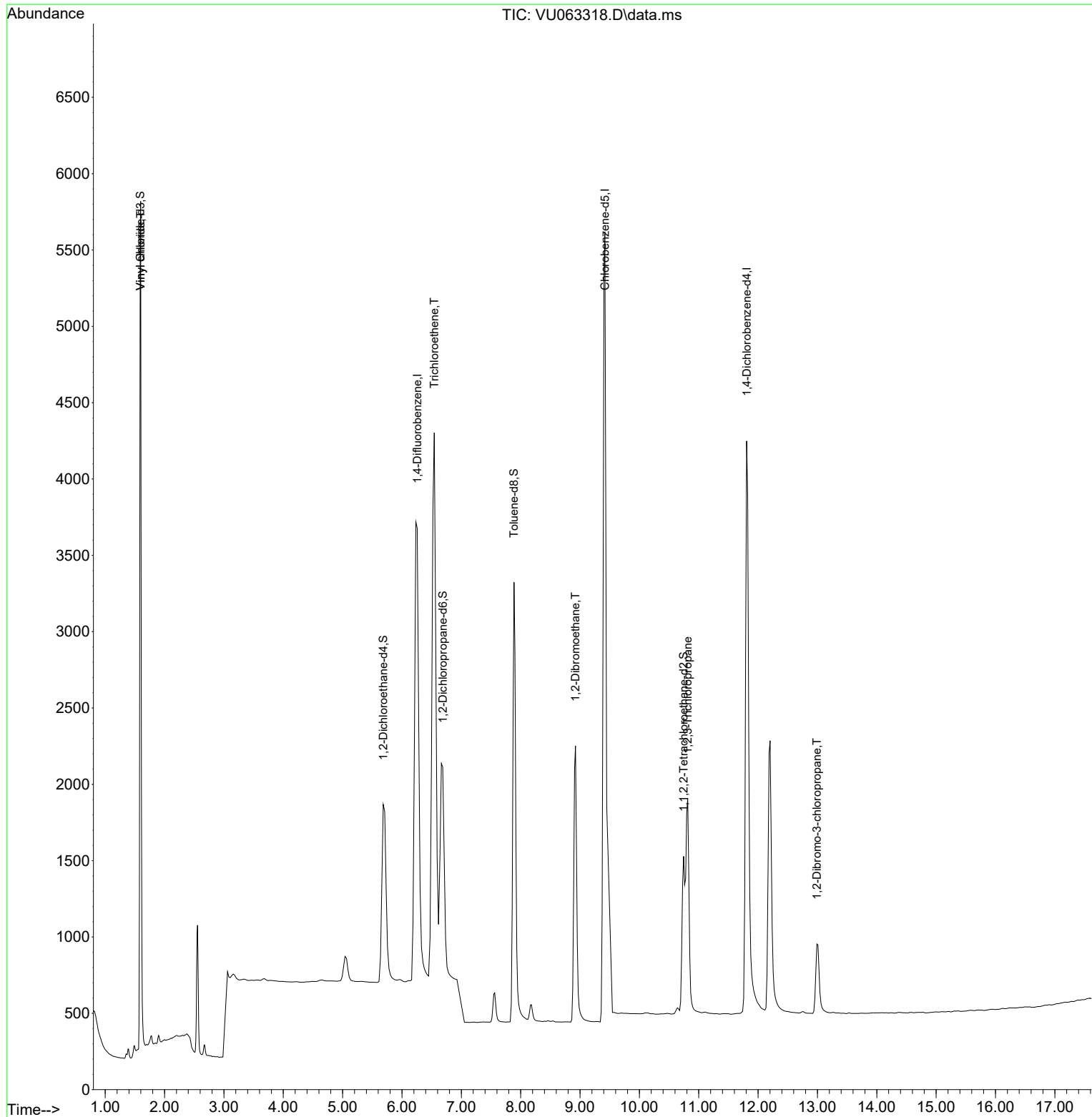
Internal Standards						
1) 1,4-Difluorobenzene	6.258	114	10700	0.50	ug/L	0.00
5) Chlorobenzene-d5	9.419	117	14554	0.50	ug/L	0.00
11) 1,4-Dichlorobenzene-d4	11.808	152	4398	0.50	ug/L	0.00
System Monitoring Compounds						
2) Vinyl Chloride-d3	1.590	65	2455	0.36	ug/L	0.00
Spiked Amount	0.500	Range 40 - 130	Recovery	=	72.00%	
4) 1,2-Dichloroethane-d4	5.685	65	2826	0.49	ug/L	0.00
Spiked Amount	0.500	Range 70 - 130	Recovery	=	98.00%	
7) 1,2-Dichloropropane-d6	6.687	67	2490	0.53	ug/L	0.00
Spiked Amount	0.500	Range 60 - 140	Recovery	=	106.00%	
8) Toluene-d8	7.887	98	5666	0.45	ug/L	0.00
Spiked Amount	0.500	Range 70 - 130	Recovery	=	90.00%	
10) 1,1,2,2-Tetrachloroeth...	10.745	84	2168	0.54	ug/L	0.00
Spiked Amount	0.500	Range 65 - 120	Recovery	=	108.00%	
Target Compounds						
						Qvalue
3) Vinyl chloride	1.597	62	4671	0.37	ug/L	97
6) Trichloroethene	6.544	95	4850	0.45	ug/L	100
9) 1,2-Dibromoethane	8.924	107	3127	0.53	ug/L	98
12) 1,2,3-Trichloropropane	10.814	75	2899	0.57	ug/L	100
13) 1,2-Dibromo-3-chloropr...	12.990	75	672	0.55	ug/L	100

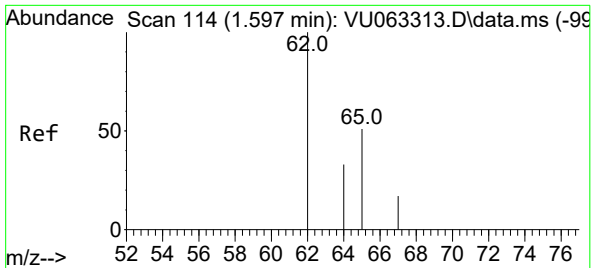
(#) = qualifier out of range (m) = manual integration (+) = signals summed

Data Path : Z:\voasrv\HPCHEM1\MSVOA_U\Data\VU032825\
 Data File : VU063318.D
 Acq On : 28 Mar 2025 10:44
 Operator : MD/SY
 Sample : VSTDCCC0.5
 Misc : 25mL/MSVOA_U/WATER
 ALS Vial : 2 Sample Multiplier: 1

Instrument :
 MSVOA_U
 ClientSampleId :
 VSTD0.5111

Quant Time: Apr 01 09:59:42 2025
 Quant Method : Z:\voasrv\HPCHEM1\MSVOA_U\Method\SFAMUSIM031925.M
 Quant Title : TRACE VOA SOM01.0
 QLast Update : Mon Mar 31 15:42:06 2025
 Response via : Initial Calibration



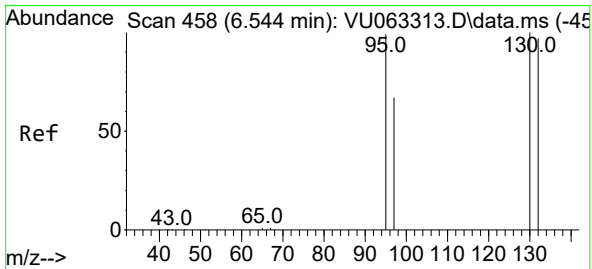
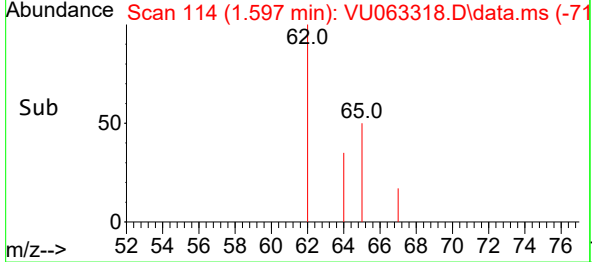
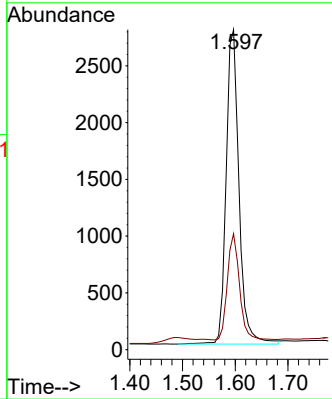
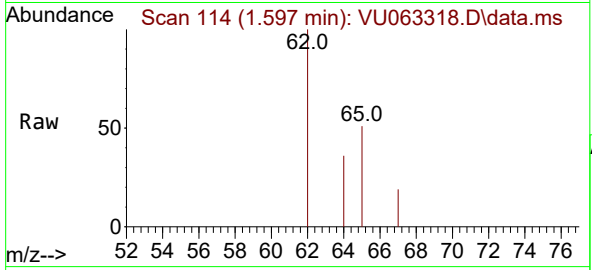


#3
 Vinyl chloride
 Concen: 0.37 ug/L
 RT: 1.597 min Scan# 114
 Delta R.T. 0.000 min
 Lab File: VU063318.D
 Acq: 28 Mar 2025 10:44

Instrument : MSVOA_U
 ClientSampleId : VSTD0.5111

Tgt Ion: 62 Resp: 4671

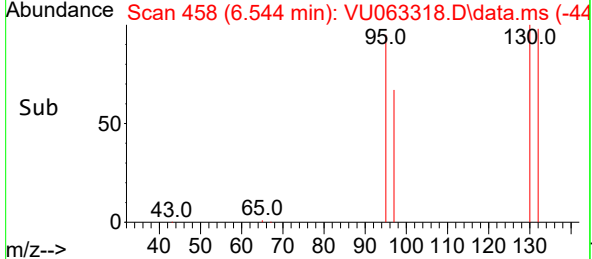
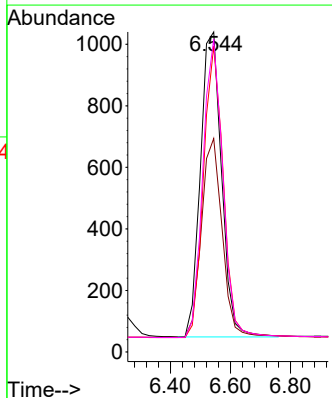
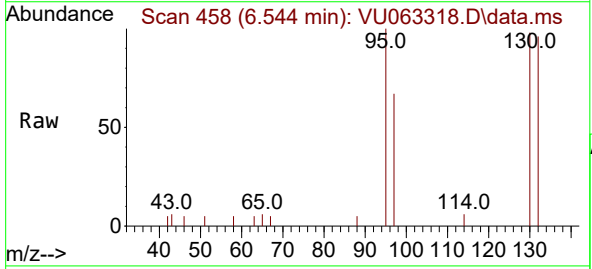
Ion	Ratio	Lower	Upper
62	100		
64	36.3	24.0	44.6

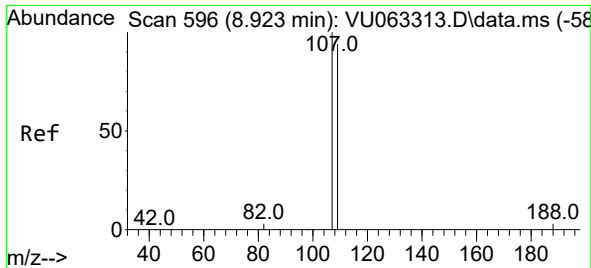


#6
 Trichloroethene
 Concen: 0.45 ug/L
 RT: 6.544 min Scan# 458
 Delta R.T. 0.000 min
 Lab File: VU063318.D
 Acq: 28 Mar 2025 10:44

Tgt Ion: 95 Resp: 4850

Ion	Ratio	Lower	Upper
95	100		
97	66.7	46.6	86.6
132	95.6	66.7	123.9
130	97.8	68.6	127.4



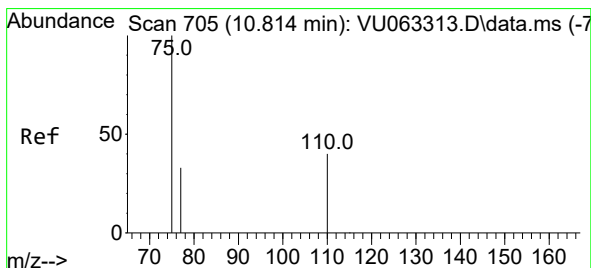
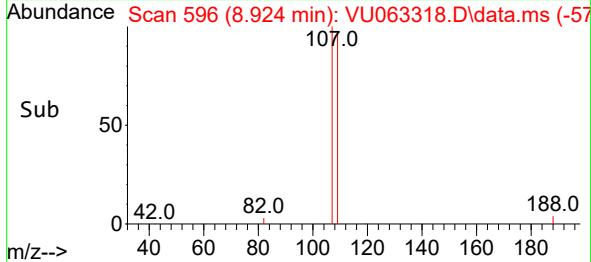
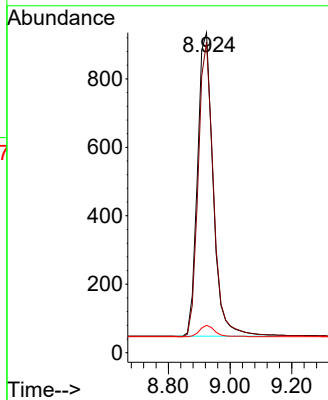
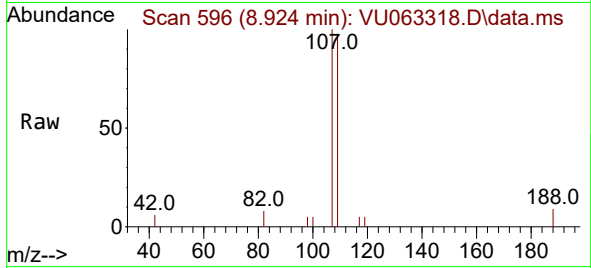


#9
 1,2-Dibromoethane
 Concen: 0.53 ug/L
 RT: 8.924 min Scan# 596
 Delta R.T. 0.000 min
 Lab File: VU063318.D
 Acq: 28 Mar 2025 10:44

Instrument : MSVOA_U
 ClientSampleId : VSTD0.5111

Tgt Ion:107 Resp: 3127

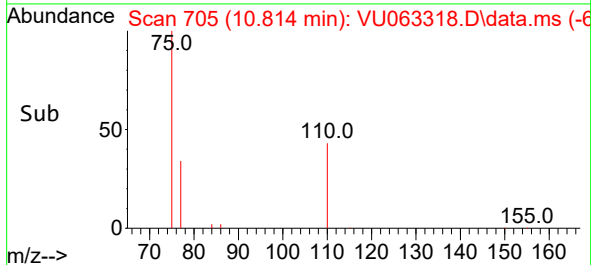
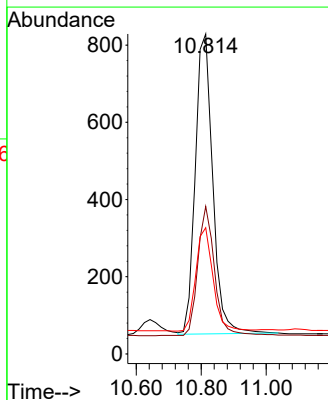
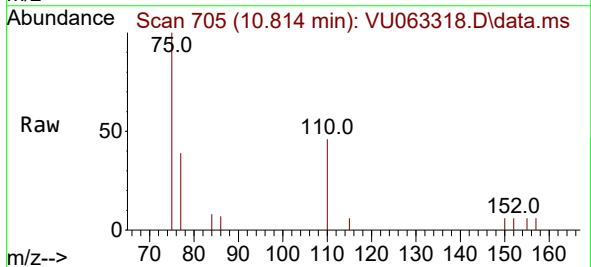
Ion	Ratio	Lower	Upper
107	100		
109	97.1	66.8	124.0
188	8.6	6.9	10.3

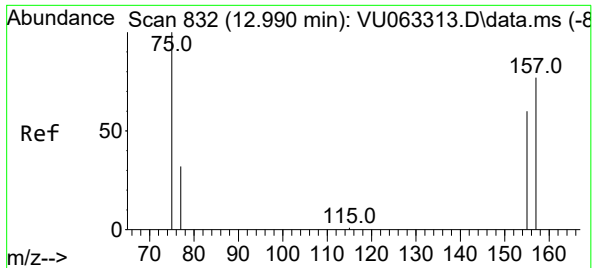


#12
 1,2,3-Trichloropropane
 Concen: 0.57 ug/L
 RT: 10.814 min Scan# 705
 Delta R.T. 0.000 min
 Lab File: VU063318.D
 Acq: 28 Mar 2025 10:44

Tgt Ion: 75 Resp: 2899

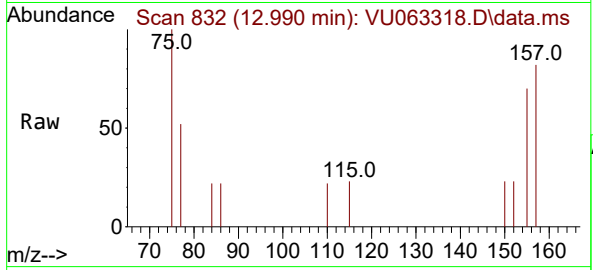
Ion	Ratio	Lower	Upper
75	100		
110	41.0	32.7	49.1
77	34.1	27.1	40.7





#13
 1,2-Dibromo-3-chloropropane
 Concen: 0.55 ug/L
 RT: 12.990 min Scan# 81
 Delta R.T. 0.000 min
 Lab File: VU063318.D
 Acq: 28 Mar 2025 10:44

Instrument :
 MSVOA_U
 ClientSampleId :
 VSTD0.5111



Tgt Ion: 75 Resp: 672

Ion	Ratio	Lower	Upper
75	100		
157	81.6	65.4	98.2
155	70.0	55.8	83.6

