

Data Path : Z:\VOASRV\HPCHEM1\MSVOA U\DATA\VU033020\  
 Data File : VU037469.D  
 Acq On : 30 Mar 2020 17:53  
 Operator : JC/MD  
 Sample : L2001-09DL 4X  
 Misc : 25.0mL/MSVOA U/WATER  
 ALS Vial : 1 Sample Multiplier: 1

Instrument :  
 MSVOA\_U  
 ClientSampleID :  
 GAWF2DL

Quant Time: Mar 31 03:10:22 2020  
 Quant Method : Z:\VOASRV\HPCHEM1\MSVOA\_U\METHOD\SOMUTR032820WMA.M  
 Quant Title : TRACE VOA SOM01.0  
 QLast Update : Tue Mar 31 01:16:50 2020  
 Response via : Initial Calibration

Internal Standards	R.T.	QIon	Response	Conc	Units	Dev(Min)
1) 1,4-Difluorobenzene	6.28	114	103998	5.00	ug/L	0.00
28) Chlorobenzene-d5	9.44	117	96903	5.00	ug/L	0.00
60) 1,4-Dichlorobenzene-d4	11.83	152	49207	5.00	ug/L	0.00

## System Monitoring Compounds

4) Vinyl Chloride-d3	1.61	65	30843	4.02	ug/L	0.00
Spiked Amount	5.000	Range	40 - 130	Recovery	=	80.40%
7) Chloroethane-d5	1.93	69	28226	4.91	ug/L	0.00
Spiked Amount	5.000	Range	65 - 130	Recovery	=	98.20%
11) 1,1-Dichloroethene-d2	2.59	63	48170	3.21	ug/L	0.00
Spiked Amount	5.000	Range	60 - 125	Recovery	=	64.20%
20) 2-Butanone-d5	4.67	46	105188	50.27	ug/L	-0.02
Spiked Amount	50.000	Range	40 - 130	Recovery	=	100.54%
24) Chloroform-d	5.10	84	65232	4.30	ug/L	0.00
Spiked Amount	5.000	Range	70 - 125	Recovery	=	86.00%
26) 1,2-Dichloroethane-d4	5.74	65	37857	4.54	ug/L	0.00
Spiked Amount	5.000	Range	70 - 130	Recovery	=	90.80%
32) Benzene-d6	5.76	84	130555	4.66	ug/L	0.00
Spiked Amount	5.000	Range	70 - 125	Recovery	=	93.20%
36) 1,2-Dichloropropane-d6	6.72	67	42856	4.62	ug/L	0.00
Spiked Amount	5.000	Range	60 - 140	Recovery	=	92.40%
41) Toluene-d8	7.92	98	120173	4.53	ug/L	0.00
Spiked Amount	5.000	Range	70 - 130	Recovery	=	90.60%
43) trans-1,3-Dichloropropene-	8.20	79	19858	4.56	ug/L	0.00
Spiked Amount	5.000	Range	55 - 130	Recovery	=	91.20%
46) 2-Hexanone-d5	8.66	63	89517	51.67	ug/L	0.00
Spiked Amount	50.000	Range	45 - 130	Recovery	=	103.34%
57) 1,1,2,2-Tetrachloroethane-	10.77	84	35419	4.55	ug/L	0.00
Spiked Amount	5.000	Range	65 - 120	Recovery	=	91.00%
64) 1,2-Dichlorobenzene-d4	12.21	152	43614	4.50	ug/L	0.00
Spiked Amount	5.000	Range	80 - 120	Recovery	=	90.00%

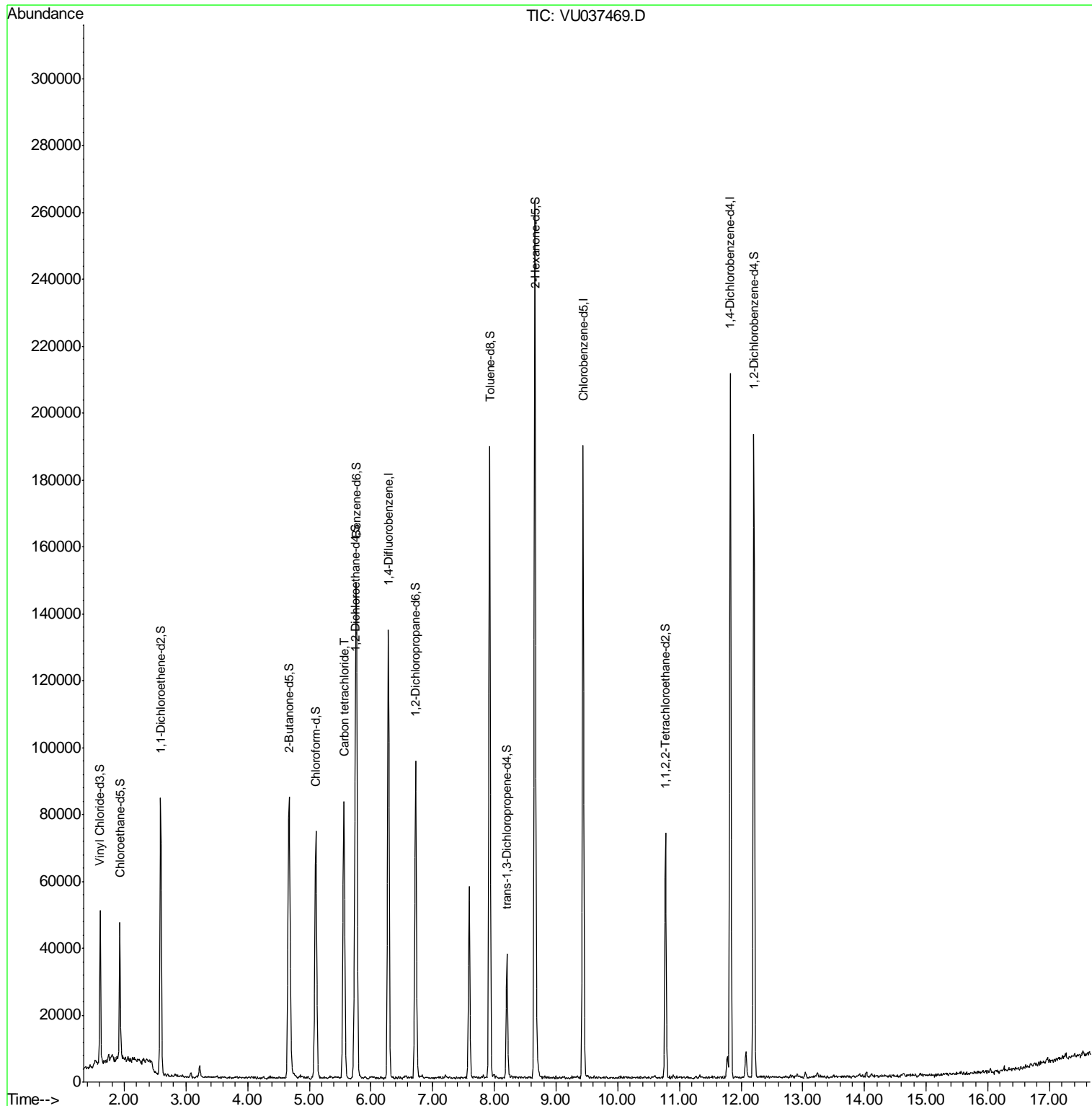
Target Compounds					Ovalue
31) Carbon tetrachloride	5.56	117	53641	5.101 ug/L	100

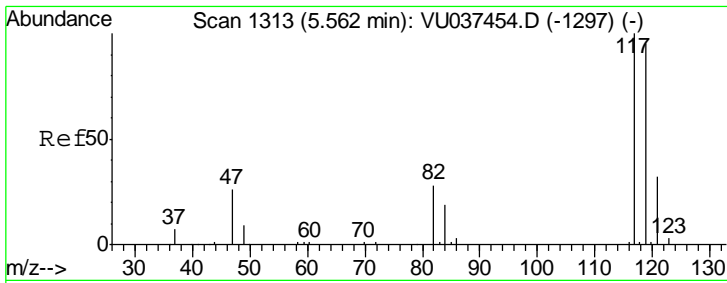
(#) = qualifier out of range (m) = manual integration (+) = signals summed

Data Path : Z:\VOASRV\HPCHEM1\MSVOA U\DATA\VU033020\  
 Data File : VU037469.D  
 Acq On : 30 Mar 2020 17:53  
 Operator : JC/MD  
 Sample : L2001-09DL 4X  
 Misc : 25.0mL/MSVOA U/WATER  
 ALS Vial : 1 Sample Multiplier: 1

Instrument :  
 MSVOA\_U  
 ClientSampled :  
 GAWF2DL

Quant Time: Mar 31 03:10:22 2020  
 Quant Method : Z:\VOASRV\HPCHEM1\MSVOA\_U\METHOD\SOMUTR032820WMA.M  
 Quant Title : TRACE VOA SOM01.0  
 QLast Update : Tue Mar 31 01:16:50 2020  
 Response via : Initial Calibration





#31  
 Carbon tetrachloride  
 Concen: 5.101 ug/L  
 RT: 5.56 min Scan# 1313  
 Delta R.T. 0.00 min  
 Lab File: VU037469.D  
 Acq: 30 Mar 2020 17:53

**Instrument :**  
 MSVOA\_U  
**ClientSampled :**  
 GAWF2DL

Tot Ion: 117 Resp: 53641

Ion	Ratio	Lower	Upper
117	100		
119	96.7	77.7	116.5

