

Data Path : Z:\VOASRV\HPCHEM1\MSVOA U\DATA\VU033020\
 Data File : VU037474.D
 Acq On : 30 Mar 2020 21:52
 Operator : JC/MD
 Sample : L2002-20
 Misc : 25.0mL/MSVOA U/WATER
 ALS Vial : 1 Sample Multiplier: 1

Instrument :
 MSVOA_U
 ClientSampled :
 GAWJ2

Integration Parameters: rteint.p
 Integrator: RTE
 Smoothing : ON
 Sampling : 1
 Start Thrs: 0.1
 Stop Thrs : 0

Filtering: 5
 Min Area: 3 % of largest Peak
 Max Peaks: 100
 Peak Location: TOP

If leading or trailing edge < 100 prefer < Baseline drop else tangent >
 Peak separation: 5

Method : Z:\VOASRV\HPCHEM1\MSVOA_U\METHOD\SOMUTR032820WMA.M
 Title : TRACE VOA SOM01.0

Signal : TIC

peak #	R.T. min	first scan	max scan	last scan	PK TY	peak height	corr. area	corr. % max.	% of total
1	1.405	15	20	26	rBV	5798	5472	1.28%	0.163%
2	1.610	77	84	94	rVB	45721	50934	11.90%	1.514%
3	1.929	176	183	194	rVB	39683	51090	11.93%	1.519%
4	2.591	378	389	403	rVB	77605	127636	29.81%	3.794%
5	4.665	1018	1034	1058	rBV2	68836	164130	38.34%	4.879%
6	4.852	1078	1092	1105	rVB3	6177	12924	3.02%	0.384%
7	5.102	1154	1170	1187	rBV	70300	155015	36.21%	4.608%
8	5.761	1354	1375	1394	rBV2	143414	366015	85.49%	10.880%
9	6.282	1521	1537	1551	rBV2	136739	253161	59.13%	7.525%
10	6.556	1615	1622	1632	rVB6	3198	4625	1.08%	0.137%
11	6.723	1660	1674	1692	rBV2	90904	178959	41.80%	5.319%
12	7.594	1932	1945	1961	rBV	53169	92973	21.72%	2.764%
13	7.925	2031	2048	2062	rBV	182768	311136	72.67%	9.248%
14	8.205	2124	2135	2148	rBV2	35546	57358	13.40%	1.705%
15	8.658	2262	2276	2301	rBV	247789	428128	100.00%	12.726%
16	8.813	2315	2324	2335	rVB5	3504	5418	1.27%	0.161%
17	9.440	2507	2519	2537	rBV	190127	315658	73.73%	9.383%
18	10.777	2923	2935	2949	rVB	68495	108090	25.25%	3.213%
19	11.703	3212	3223	3231	rBV5	6645	9765	2.28%	0.290%
20	11.781	3236	3247	3251	rBV9	3162	5097	1.19%	0.152%
21	11.829	3251	3262	3277	rVB	202366	319053	74.52%	9.484%
22	12.208	3368	3380	3394	rVB	178224	284299	66.41%	8.451%
23	12.916	3588	3600	3610	rBV3	18650	27625	6.45%	0.821%
24	14.025	3935	3945	3959	rBV4	19422	29648	6.93%	0.881%

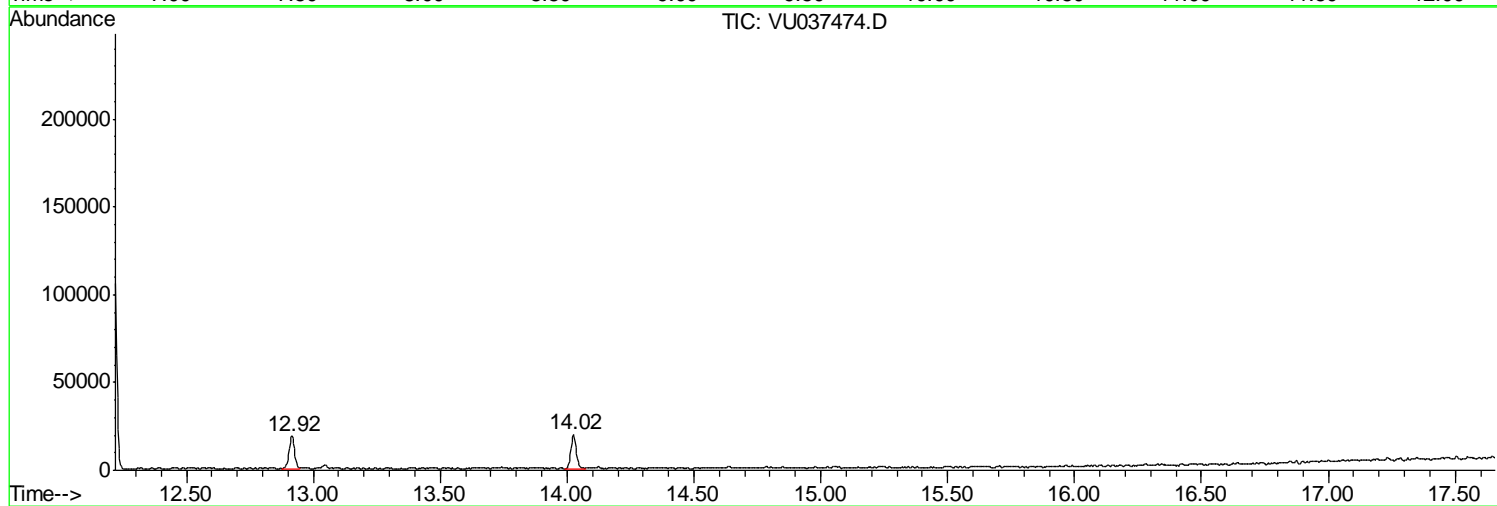
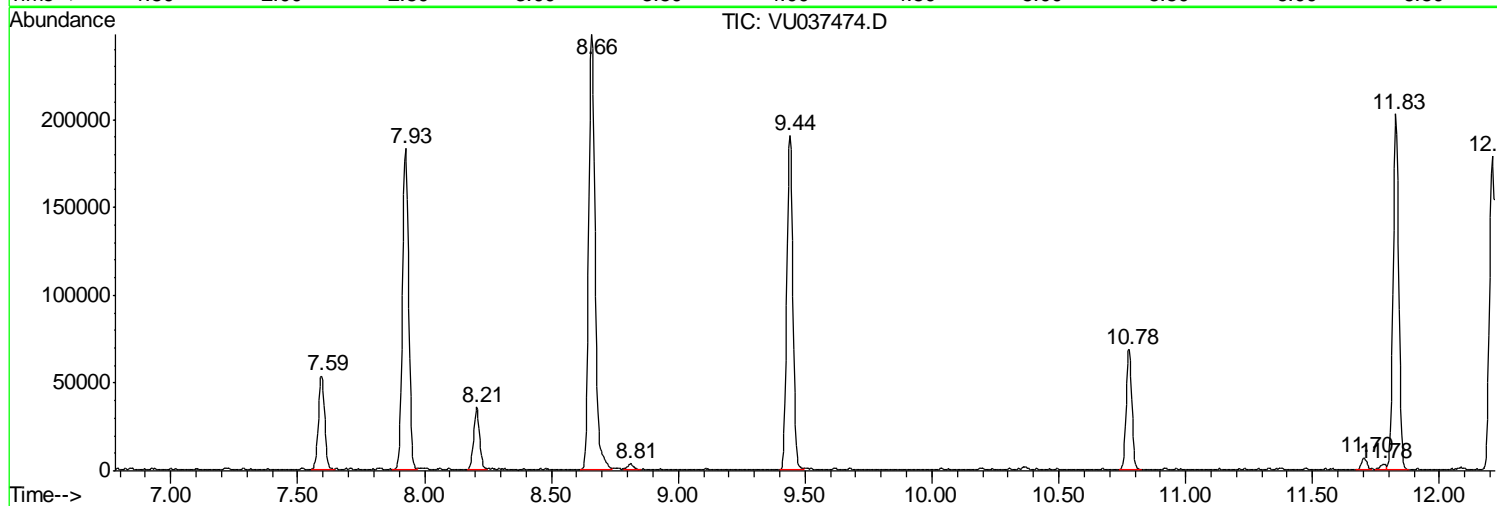
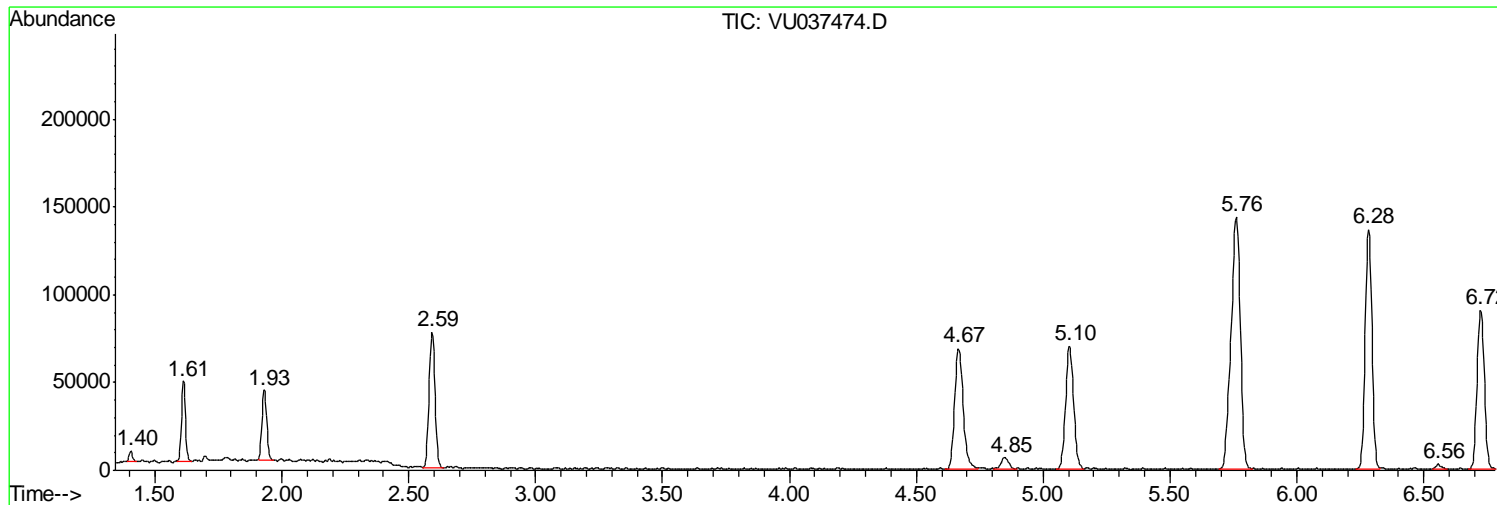
Sum of corrected areas: 3364209

Data Path : Z:\VOASRV\HPCHEM1\MSVOA U\DATA\VU033020\
Data File : VU037474.D
Acq On : 30 Mar 2020 21:52
Operator : JC/MD
Sample : L2002-20
Misc : 25.0mL/MSVOA U/WATER
ALS Vial : 1 Sample Multiplier: 1

Instrument :
MSVOA_U
ClientSampled :
GAWJ2

Quant Method : Z:\VOASRV\HPCHEM1\MSVOA_U\METHOD\SOMUTR032820WMA.M
Quant Title : TRACE VOA SOM01.0

TIC Library : C:\DATABASE\NIST11.L
TIC Integration Parameters: LSCINT.P



Data Path : Z:\VOASRV\HPCHEM1\MSVOA_U\DATA\VU033020\
Data File : VU037474.D
Acq On : 30 Mar 2020 21:52
Operator : JC/MD
Sample : L2002-20
Misc : 25.0mL/MSVOA_U/WATER
ALS Vial : 1 Sample Multiplier: 1

Instrument :
MSVOA_U
ClientSampled :
GAWJ2

Quant Method : Z:\VOASRV\HPCHEM1\MSVOA_U\METHOD\SOMUTR032820WMA.M
Quant Title : TRACE VOA SOM01.0

TIC Library : C:\DATABASE\NIST11.L
TIC Integration Parameters: LSCINT.P

No Library Search Compounds Detected

Data Path : Z:\VOASRV\HPCHEM1\MSVOA_U\DATA\VU033020\
Data File : VU037474.D
Acq On : 30 Mar 2020 21:52
Operator : JC/MD
Sample : L2002-20
Misc : 25.0mL/MSVOA_U/WATER
ALS Vial : 1 Sample Multiplier: 1

Instrument :
MSVOA_U
ClientSampleId :
GAWJ2

Quant Method : Z:\VOASRV\HPCHEM1\MSVOA_U\METHOD\SOMUTR032820WMA.M
Quant Title : TRACE VOA SOM01.0

TIC Library : C:\DATABASE\NIST11.L
TIC Integration Parameters: LSCINT.P

TIC Top Hit name	RT	EstConc	Units	Response	--Internal Standard--			
					#	RT	Resp	Conc
