

Data Path : Z:\voasrv\HPCHEM1\MSVOA\_U\Data\VU040424\  
 Data File : VU058393.D  
 Acq On : 05 Apr 2024 02:18  
 Operator : MD/SY  
 Sample : P1970-06  
 Misc : 25.0mL/MSVOA\_U/WATER  
 ALS Vial : 27 Sample Multiplier: 1

**Instrument :**  
 MSVOA\_U  
**ClientSampleId :**

Quant Time: Apr 05 05:15:58 2024  
 Quant Method : Z:\voasrv\HPCHEM1\MSVOA\_U\Method\SFAMUTRO40424WMA.M  
 Quant Title : TRACE VOA SFAM1.0  
 QLast Update : Fri Apr 05 00:02:56 2024  
 Response via : Initial Calibration

Compound	R.T.	QI on	Response	Conc	Units	Dev(Min)
Internal Standards						
1) 1,4-Difluorobenzene	6.242	114	84984	5.000	ug/L	0.00
28) Chlorobenzene-d5	9.412	117	79837	5.000	ug/L	0.00
58) 1,4-Dichlorobenzene-d4	11.807	152	34873	5.000	ug/L	0.00

System Monitoring Compounds						
4) Vinyl chloride-d3	1.596	65	27787	4.939	ug/L	0.00
Spike Amount	5.000	Range	40 - 130	Recovery	=	98.800%
7) Chloroethane-d5	1.907	69	24068	4.922	ug/L	0.00
Spike Amount	5.000	Range	65 - 130	Recovery	=	98.400%
11) 1,1-Dichloroethene-d2	2.560	65	15397	6.046	ug/L	0.00
Spike Amount	5.000	Range	60 - 125	Recovery	=	121.000%
20) 2-Butanone-d5	4.628	46	58270	49.143	ug/L	0.00
Spike Amount	50.000	Range	40 - 130	Recovery	=	98.280%
24) Chloroform-d	5.052	84	55505	4.942	ug/L	0.00
Spike Amount	5.000	Range	70 - 125	Recovery	=	98.800%
26) 1,2-Dichloroethane-d4	5.695	65	26337	5.024	ug/L	0.00
Spike Amount	5.000	Range	70 - 130	Recovery	=	100.400%
32) Benzene-d6	5.718	84	110380	5.135	ug/L	0.00
Spike Amount	5.000	Range	70 - 125	Recovery	=	102.800%
36) 1,2-Dichloropropane-d6	6.682	67	35188	5.220	ug/L	0.00
Spike Amount	5.000	Range	60 - 140	Recovery	=	104.400%
41) Toluene-d8	7.891	98	93298	4.895	ug/L	0.00
Spike Amount	5.000	Range	70 - 130	Recovery	=	97.800%
43) trans-1,3-Dichloropropene	8.174	79	10739	5.132	ug/L	0.00
Spike Amount	5.000	Range	55 - 130	Recovery	=	102.600%
46) 2-Hexanone-d5	8.627	63	41896	48.546	ug/L	0.00
Spike Amount	50.000	Range	45 - 130	Recovery	=	97.100%
56) 1,1,2,2-Tetrachloroethene	10.750	84	21612	4.542	ug/L	0.00
Spike Amount	5.000	Range	65 - 120	Recovery	=	90.800%
66) 1,2-Dichlorobenzene-d4	12.187	152	28208	4.803	ug/L	0.00
Spike Amount	5.000	Range	80 - 120	Recovery	=	96.000%

Target Compounds						Qvalue
3) Chloromethane	1.518	50	1202	0.139	ug/L	93
5) Vinyl chloride	1.602	62	1562	0.180	ug/L #	81
9) Trichlorofluoromethane	2.136	101	2862	0.250	ug/L	95
10) 1,1,2-Trichloro-1,2,2-trifluoroethane	2.573	101	12793	1.883	ug/L #	32
12) 1,1-Dichloroethene	2.573	96	5414212	898.953	ug/L #	76
13) Acetone	2.641	43	92740	91.638	ug/L	97
16) Methyl chloroethane	3.036	84	8786	1.099	ug/L	98
19) 1,1-Dichloroethane	3.859	63	627716	45.560	ug/L	98
25) Chloroform	5.081	83	7246	0.543	ug/L	100
27) 1,2-Dichloroethane	5.788	62	9931	1.223	ug/L	97
29) 1,1,1-Trichloroethane	5.312	97	15953213	1490.395	ug/L	98
31) Carbon tetrachloride	5.312	117	1980533	218.481	ug/L	100
34) Trichloroethene	6.534	95	86480	11.855	ug/L	98
35) Methyl cyclohexane	6.685	83	7197	0.655	ug/L #	16
37) 1,2-Dichloropropane	6.685	63	3993	0.524	ug/L #	90
42) Toluene	7.965	91	3731	0.123	ug/L	96
45) 1,1,2-Trichloroethane	8.396	97	523	0.118	ug/L #	69
47) Tetrachloroethene	8.547	164	5968	1.116	ug/L	94
49) Dibromochloromethane	8.547	129	5979	1.163	ug/L #	11

Data Path : Z:\voasrv\HPCHEM1\MSVOA\_U\Data\VU040424\  
Data File : VU058393.D  
Acq On : 05 Apr 2024 02:18  
Operator : MD/SY  
Sample : P1970-06  
Misc : 25.0mL/MSVOA\_U/WATER  
ALS Vial : 27 Sample Multiplier: 1

Instrument :  
MSVOA\_U  
ClientSampleId :

Quant Time: Apr 05 05:15:58 2024  
Quant Method : Z:\voasrv\HPCHEM1\MSVOA\_U\Method\SFAMUTR040424WMA.M  
Quant Title : TRACE VOA SFAM1.0  
QLast Update : Fri Apr 05 00:02:56 2024  
Response via : Initial Calibration

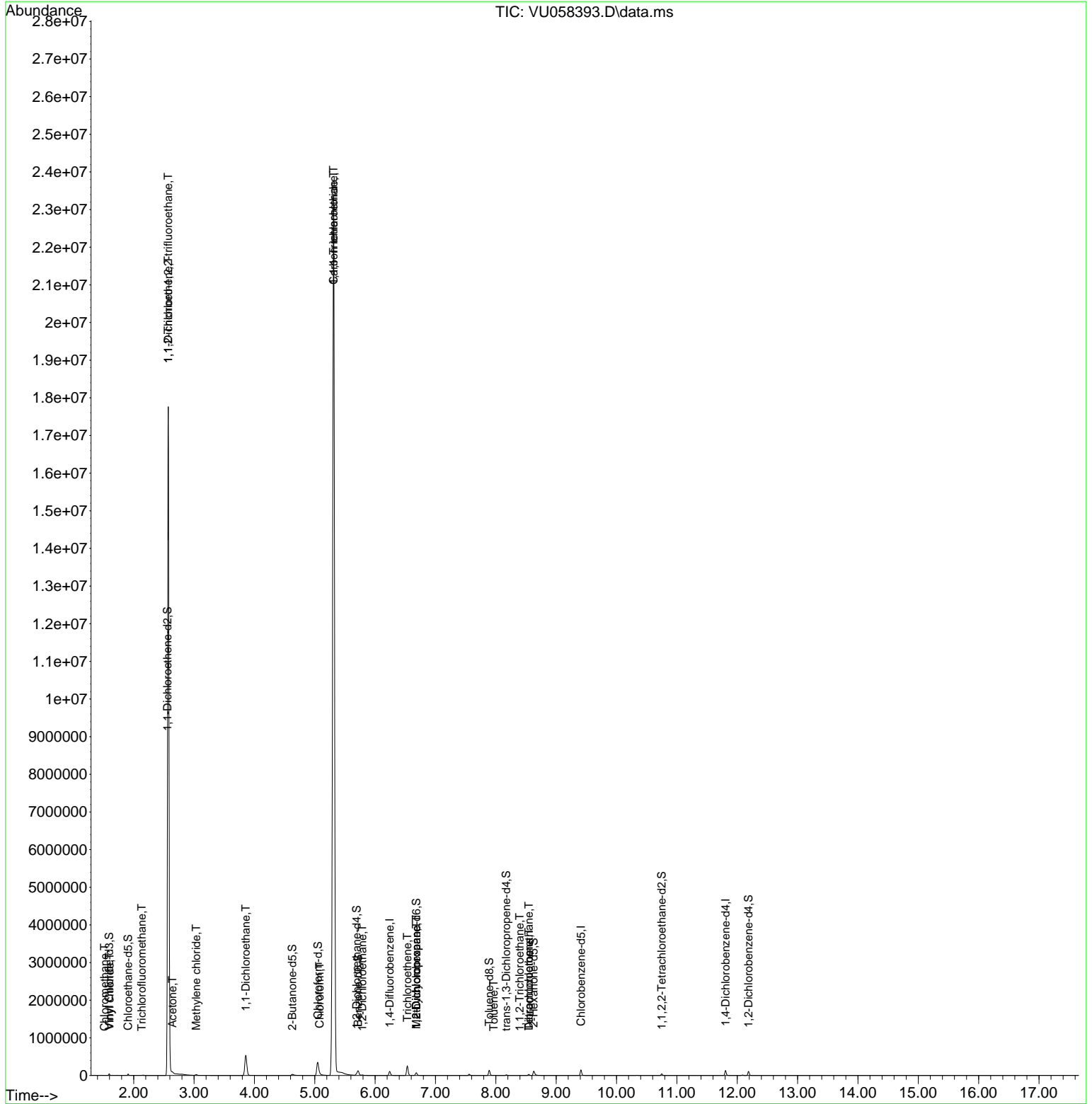
Compound	R.T.	QI on	Response	Conc	Units	Dev(Min)
----------	------	-------	----------	------	-------	----------

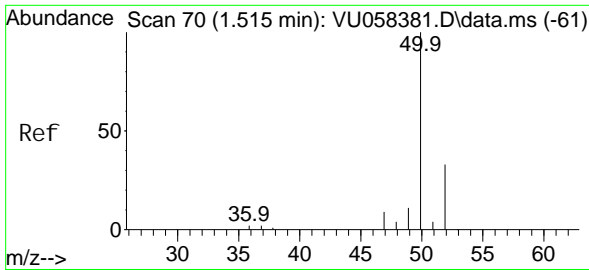
(#) = qualifier out of range (m) = manual integration (+) = signals summed

Data Path : Z:\voasrv\HPCHEM1\MSVOA\_U\Data\VU040424\  
 Data File : VU058393.D  
 Acq On : 05 Apr 2024 02:18  
 Operator : MD/SY  
 Sample : P1970-06  
 Misc : 25.0mL/MSVOA\_U/WATER  
 ALS Vial : 27 Sample Multiplier: 1

Instrument :  
 MSVOA\_U  
 ClientSampleId :

Quant Time: Apr 05 05:15:58 2024  
 Quant Method : Z:\voasrv\HPCHEM1\MSVOA\_U\Method\SFAMUTR040424WMA.M  
 Quant Title : TRACE VOA SFAM1.0  
 QLast Update : Fri Apr 05 00:02:56 2024  
 Response via : Initial Calibration





#3

Chloromethane

Concen: 0.139 ug/L

RT: 1.518 min Scan# 71

Delta R.T. 0.003 min

Lab File: VU058393.D

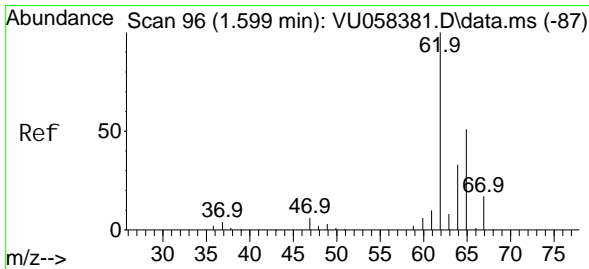
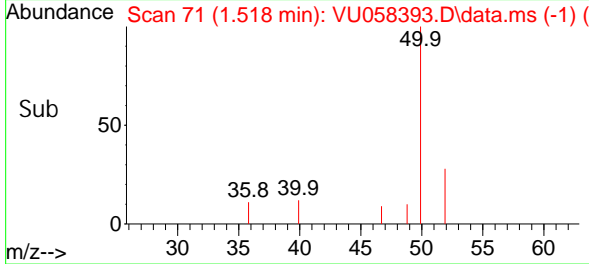
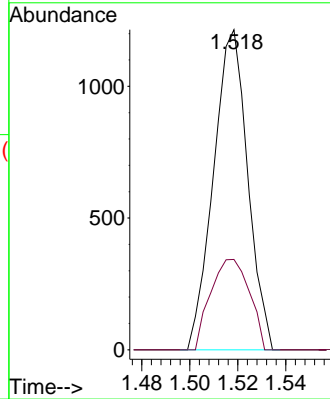
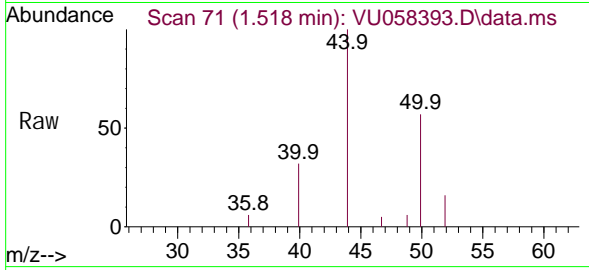
Acq: 05 Apr 2024 02:18

Instrument :

MSVOA\_U

ClientSampleId :

Tgt Ion	Resp	Lower	Upper
50	1202		
52	28.2	22.6	42.0



#5

Vinyl chloride

Concen: 0.180 ug/L

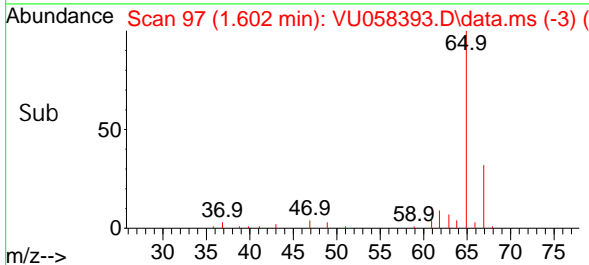
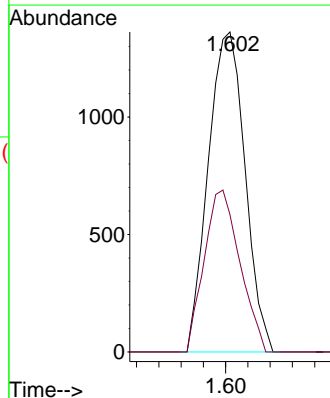
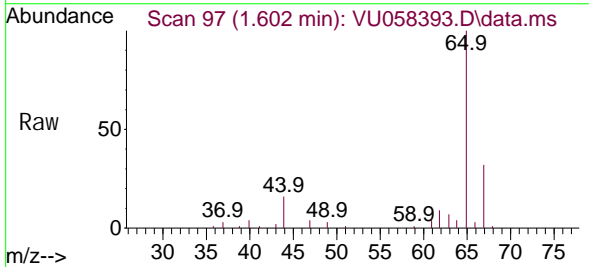
RT: 1.602 min Scan# 97

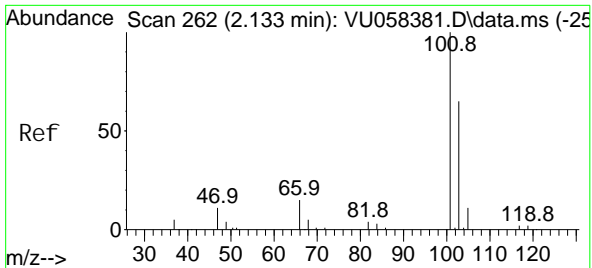
Delta R.T. 0.003 min

Lab File: VU058393.D

Acq: 05 Apr 2024 02:18

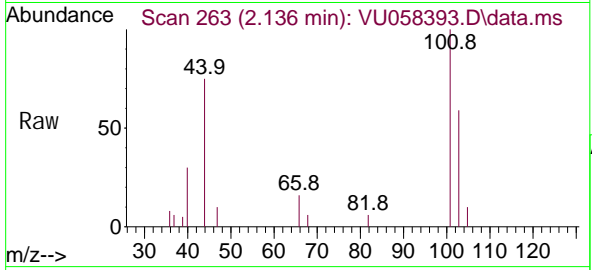
Tgt Ion	Resp	Lower	Upper
62	1562		
64	42.9	22.6	42.0#



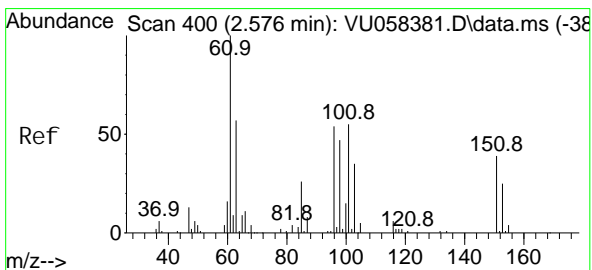
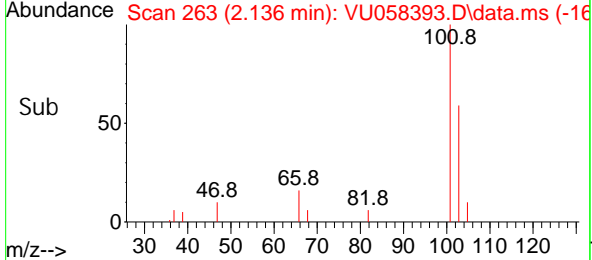
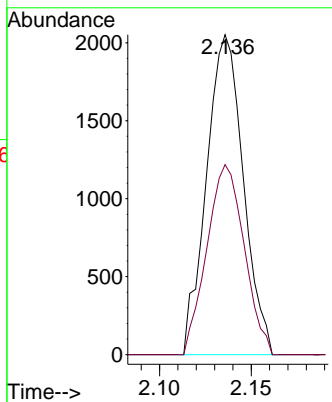


#9  
 Trichlorofluoromethane  
 Concen: 0.250 ug/L  
 RT: 2.136 min Scan# 20  
 Delta R.T. 0.003 min  
 Lab File: VU058393.D  
 Acq: 05 Apr 2024 02:18

Instrument :  
 MSVOA\_U  
 ClientSampleId :

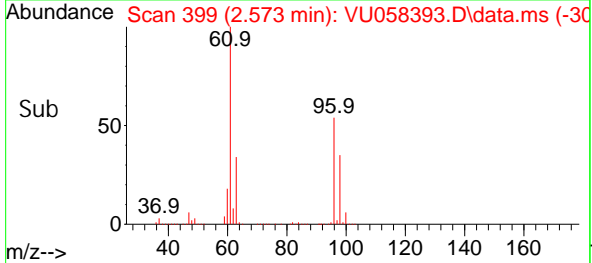
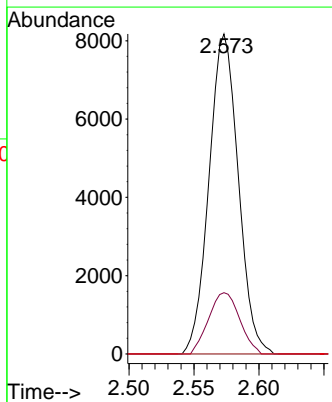
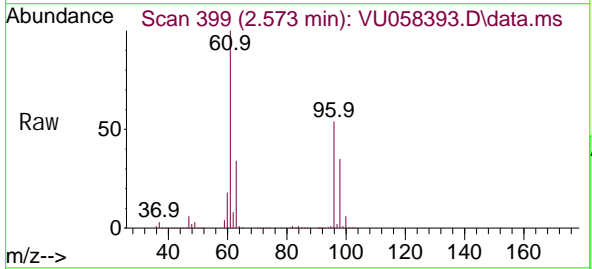


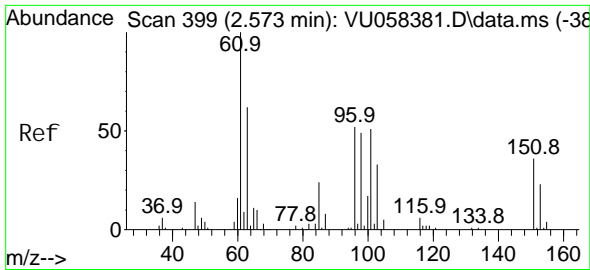
Tgt Ion: 101 Resp: 2862  
 Ion Ratio Lower Upper  
 101 100  
 103 60.4 51.2 76.8



#10  
 1,1,2-Trichloro-1,2,2-trifluoroethane  
 Concen: 1.883 ug/L  
 RT: 2.573 min Scan# 399  
 Delta R.T. -0.003 min  
 Lab File: VU058393.D  
 Acq: 05 Apr 2024 02:18

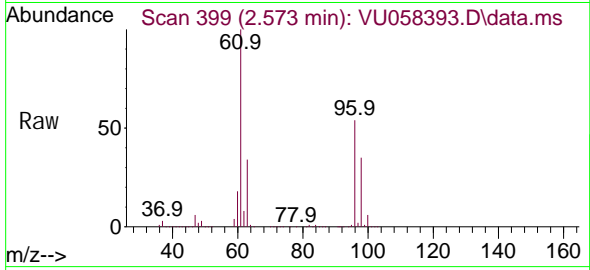
Tgt Ion: 101 Resp: 12793  
 Ion Ratio Lower Upper  
 101 100  
 85 20.3 36.8 55.2#  
 151 0.0 58.2 87.4#



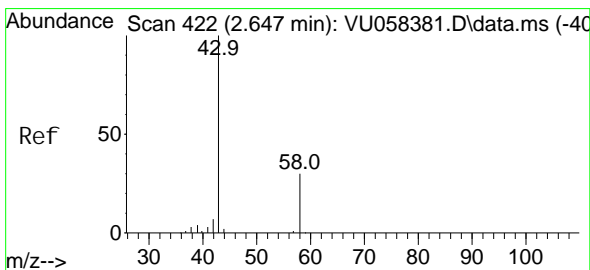
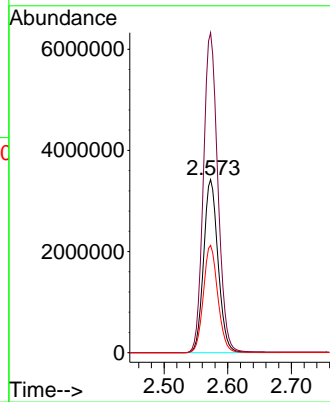
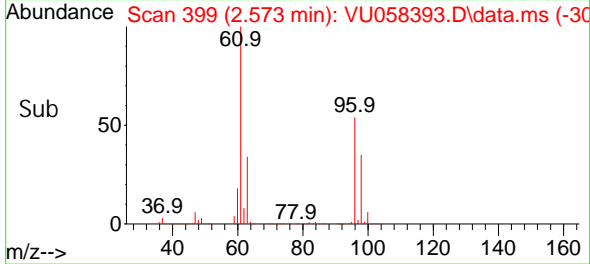


#12  
 1,1-Dichloroethene  
 Concen: 898.953 ug/L  
 RT: 2.573 min Scan# 399  
 Delta R.T. -0.000 min  
 Lab File: VU058393.D  
 Acq: 05 Apr 2024 02:18

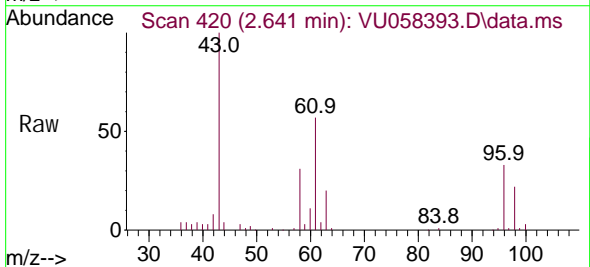
Instrument : MSVOA\_U  
 ClientSampleId :



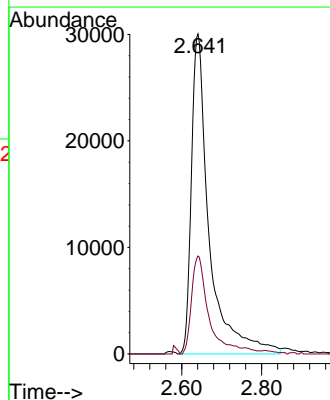
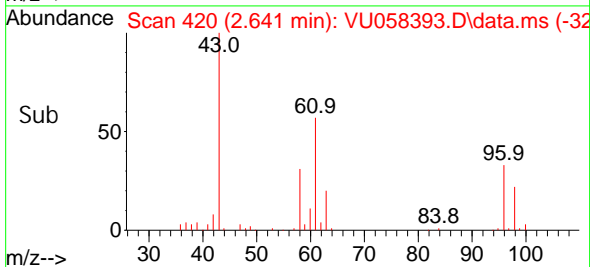
Tgt Ion: 96 Resp: 5414212  
 Ion Ratio Lower Upper  
 96 100  
 61 184.8 132.5 246.1  
 63 62.0 87.7 162.9#

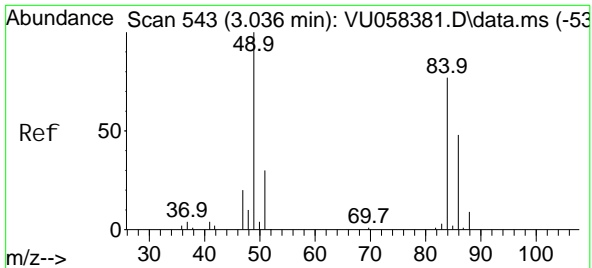


#13  
 Acetone  
 Concen: 91.638 ug/L  
 RT: 2.641 min Scan# 420  
 Delta R.T. -0.007 min  
 Lab File: VU058393.D  
 Acq: 05 Apr 2024 02:18



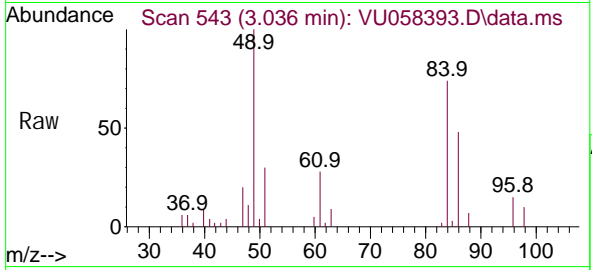
Tgt Ion: 43 Resp: 92740  
 Ion Ratio Lower Upper  
 43 100  
 58 29.1 0.0 61.4



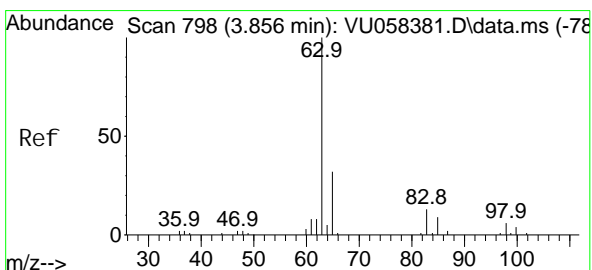
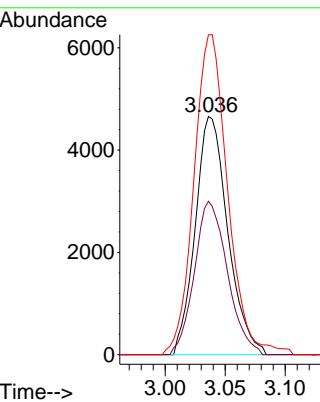
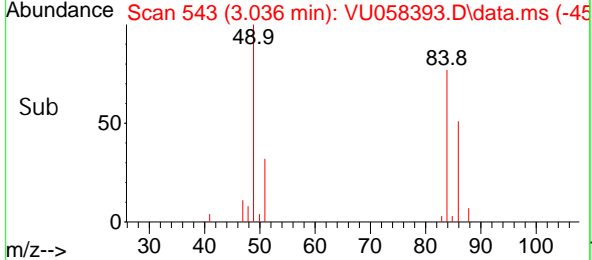


#16  
 Methylene chloride  
 Concen: 1.099 ug/L  
 RT: 3.036 min Scan# 544  
 Delta R.T. -0.000 min  
 Lab File: VU058393.D  
 Acq: 05 Apr 2024 02:18

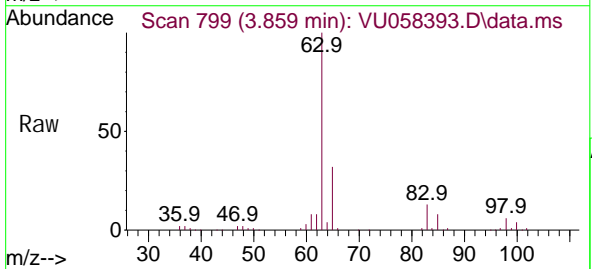
Instrument : MSVOA\_U  
 ClientSampleId :



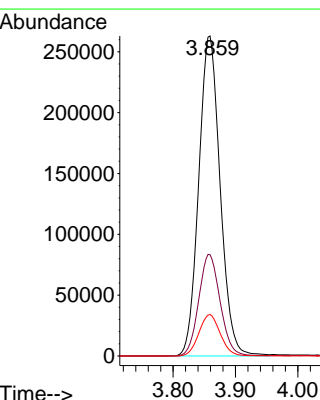
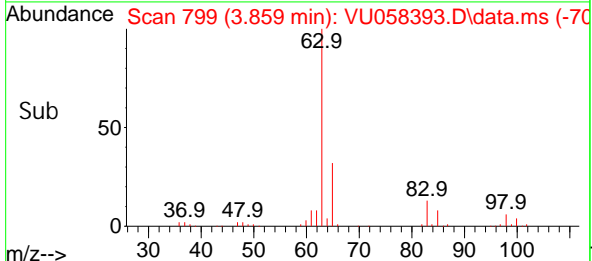
Tgt Ion: 84 Resp: 8786  
 Ion Ratio Lower Upper  
 84 100  
 86 64.4 44.3 82.3  
 49 134.3 96.0 178.2

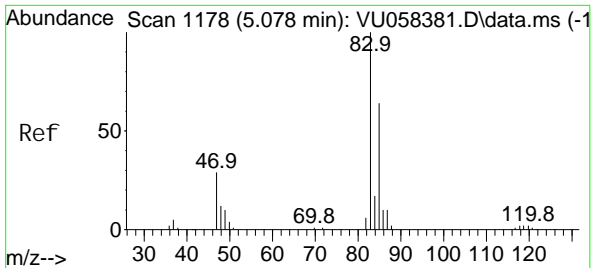


#19  
 1,1-Dichloroethane  
 Concen: 45.560 ug/L  
 RT: 3.859 min Scan# 799  
 Delta R.T. 0.003 min  
 Lab File: VU058393.D  
 Acq: 05 Apr 2024 02:18



Tgt Ion: 63 Resp: 627716  
 Ion Ratio Lower Upper  
 63 100  
 65 31.6 22.9 42.5  
 83 12.9 9.6 17.8

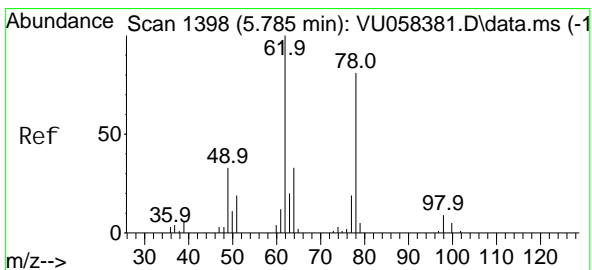
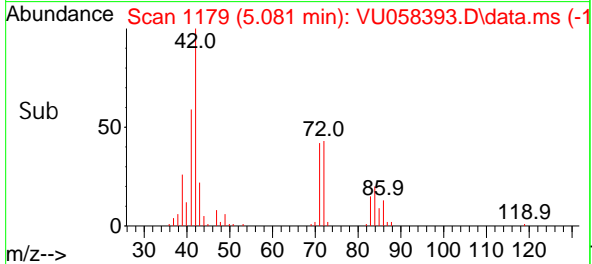
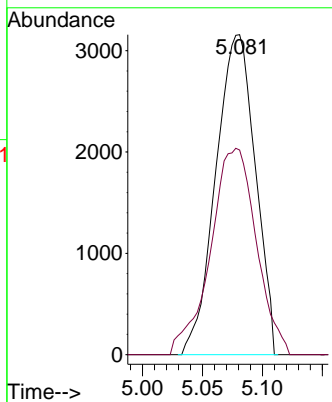
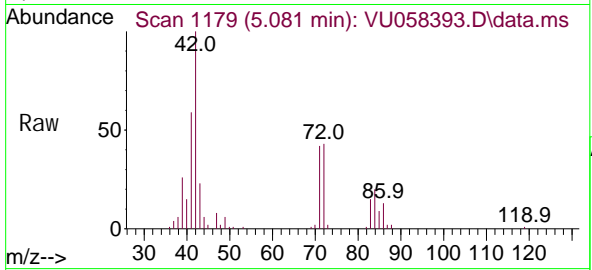




#25  
 Chloroform  
 Concen: 0.543 ug/L  
 RT: 5.081 min Scan# 1179  
 Delta R.T. 0.003 min  
 Lab File: VU058393.D  
 Acq: 05 Apr 2024 02:18

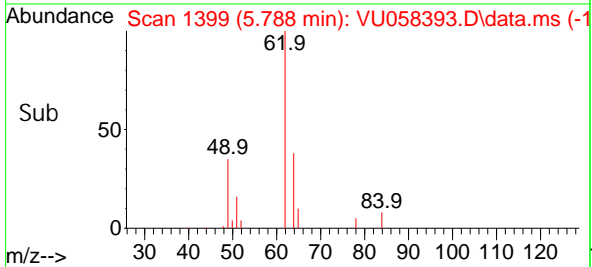
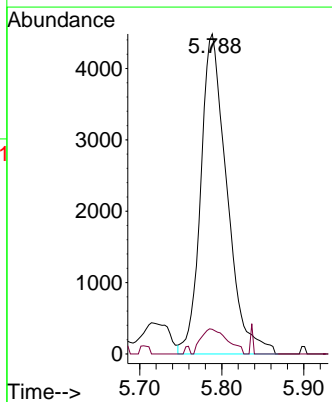
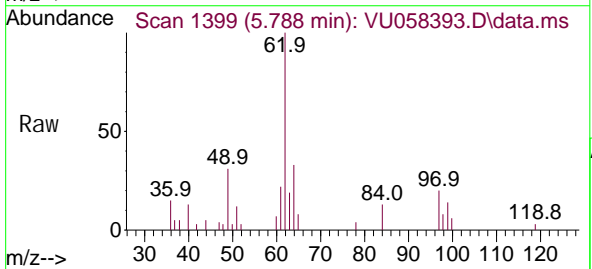
Instrument : MSVOA\_U  
 ClientSampleId :

Tgt Ion: 83 Resp: 7246  
 Ion Ratio Lower Upper  
 83 100  
 85 63.9 44.7 83.1

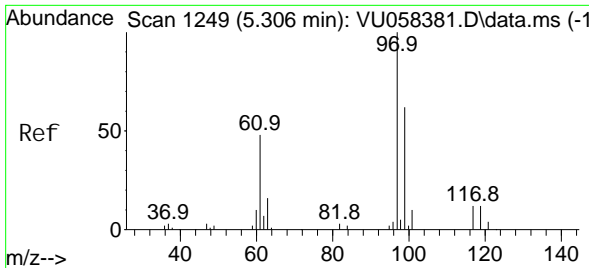


#27  
 1,2-Di chloroethane  
 Concen: 1.223 ug/L  
 RT: 5.788 min Scan# 1399  
 Delta R.T. 0.003 min  
 Lab File: VU058393.D  
 Acq: 05 Apr 2024 02:18

Tgt Ion: 62 Resp: 9931  
 Ion Ratio Lower Upper  
 62 100  
 98 7.7 7.0 10.4





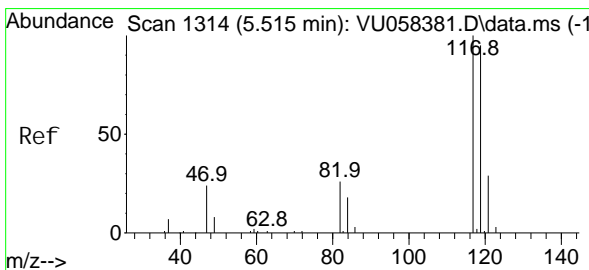
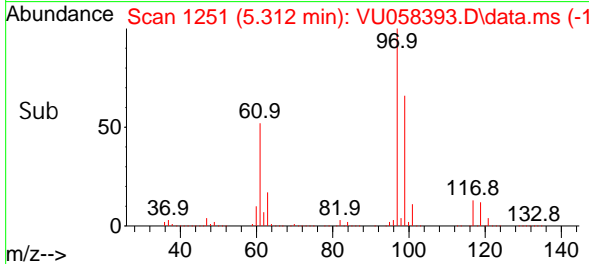
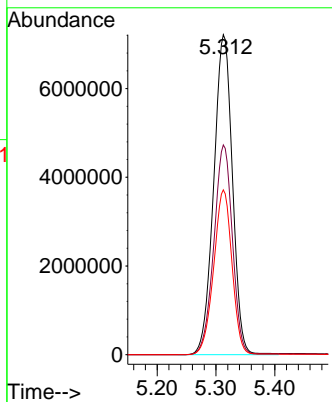
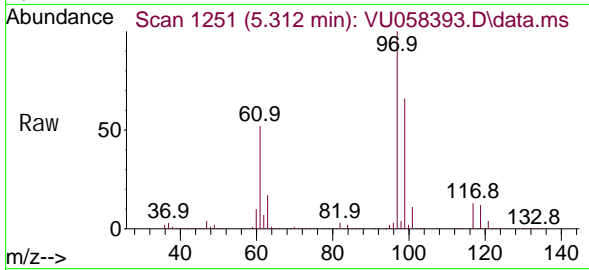


#29  
 1, 1, 1-Trichloroethane  
 Concen: 1490.395 ug/L  
 RT: 5.312 min Scan# 1251  
 Delta R.T. 0.006 min  
 Lab File: VU058393.D  
 Acq: 05 Apr 2024 02:18

Instrument : MSVOA\_U  
 ClientSampleId :

Tgt Ion: 97 Resp: 15953213

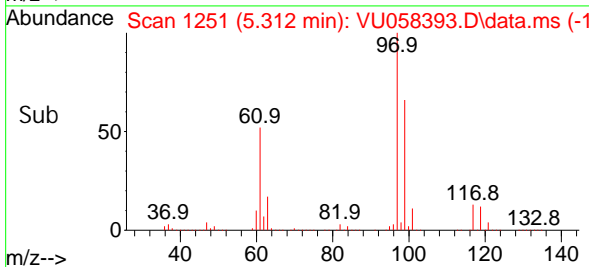
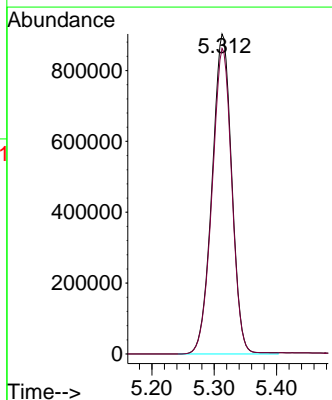
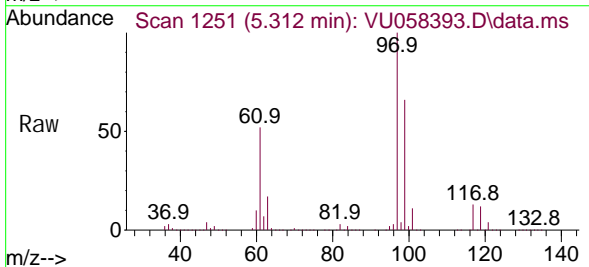
Ion	Ratio	Lower	Upper
97	100		
99	64.8	50.4	75.6
61	50.5	39.4	59.0

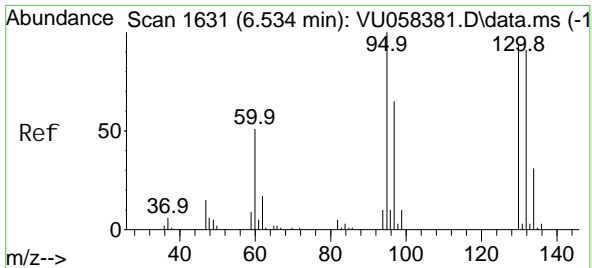


#31  
 Carbon tetrachloride  
 Concen: 218.481 ug/L  
 RT: 5.312 min Scan# 1251  
 Delta R.T. -0.203 min  
 Lab File: VU058393.D  
 Acq: 05 Apr 2024 02:18

Tgt Ion: 117 Resp: 1980533

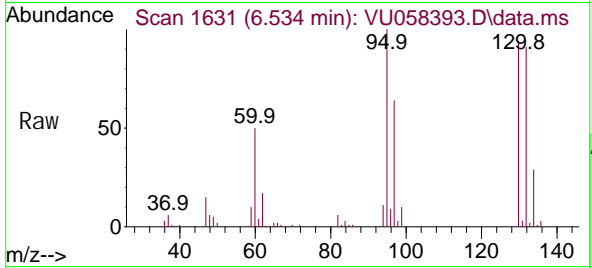
Ion	Ratio	Lower	Upper
117	100		
119	95.7	76.7	115.1





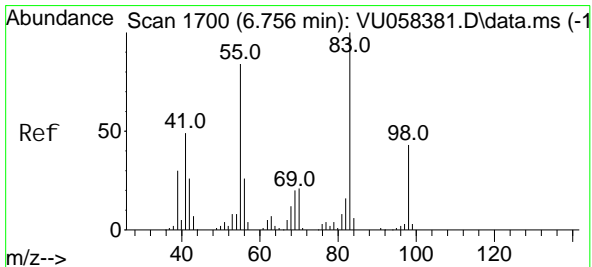
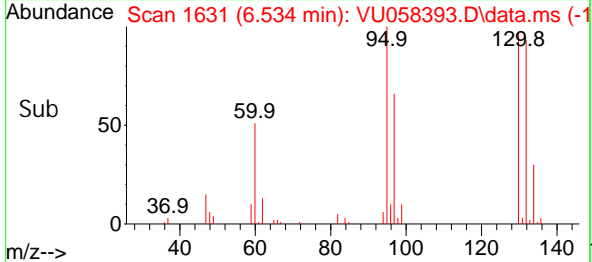
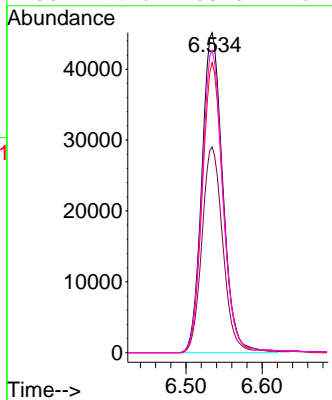
#34  
 Trichloroethene  
 Concen: 11.855 ug/L  
 RT: 6.534 min Scan# 1678  
 Delta R.T. -0.000 min  
 Lab File: VU058393.D  
 Acq: 05 Apr 2024 02:18

Instrument : MSVOA\_U  
 ClientSampleId :



Tgt Ion: 95 Resp: 86480

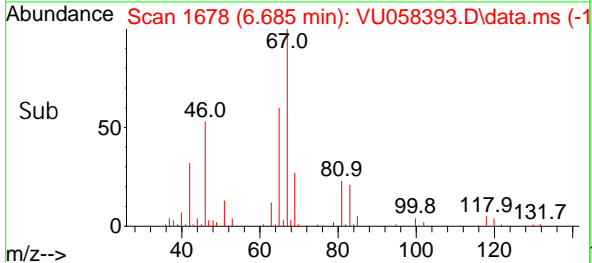
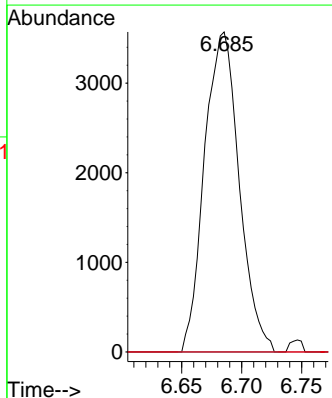
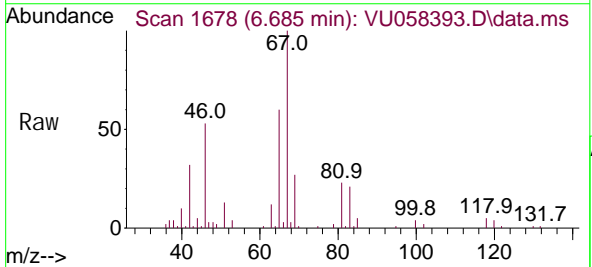
Ion	Ratio	Lower	Upper
95	100		
97	64.3	45.6	84.6
132	90.7	64.8	120.3
130	94.5	68.0	126.2

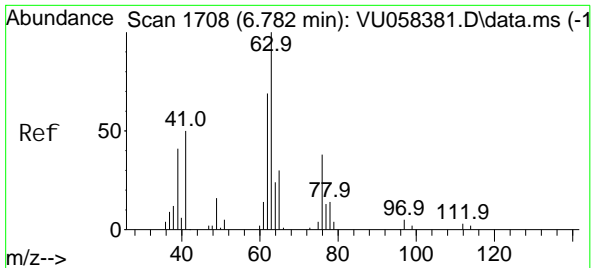


#35  
 Methyl cycl ohexane  
 Concen: 0.655 ug/L  
 RT: 6.685 min Scan# 1678  
 Delta R.T. -0.071 min  
 Lab File: VU058393.D  
 Acq: 05 Apr 2024 02:18

Tgt Ion: 83 Resp: 7197

Ion	Ratio	Lower	Upper
83	100		
55	0.0	66.2	99.4#
98	0.0	34.6	52.0#

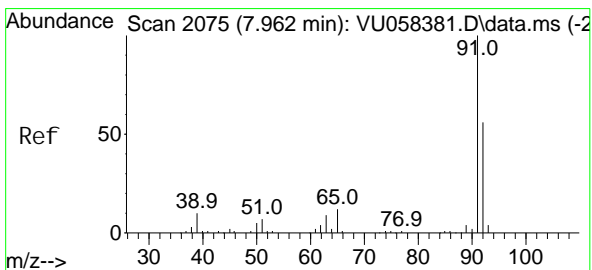
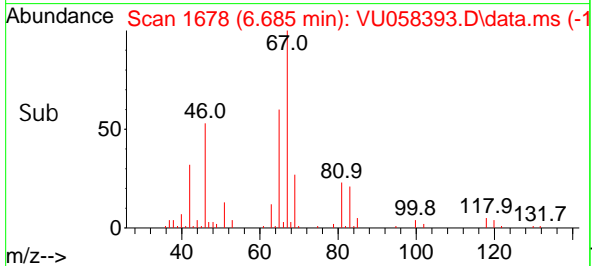
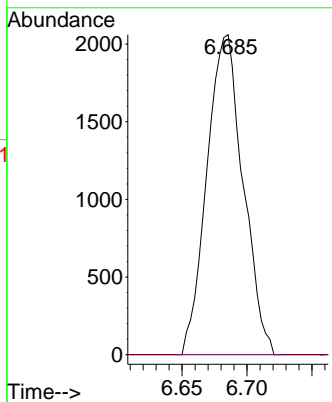
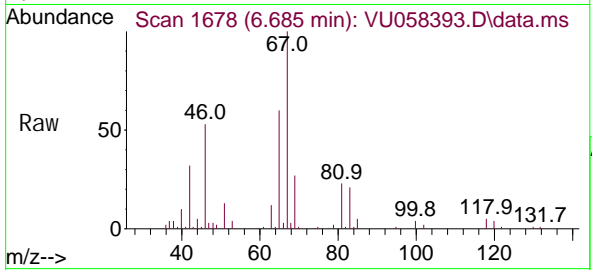




#37  
 1, 2-Di chl oropropane  
 Concen: 0.524 ug/L  
 RT: 6.685 min Scan# 10  
 Delta R.T. -0.097 min  
 Lab File: VU058393.D  
 Acq: 05 Apr 2024 02:18

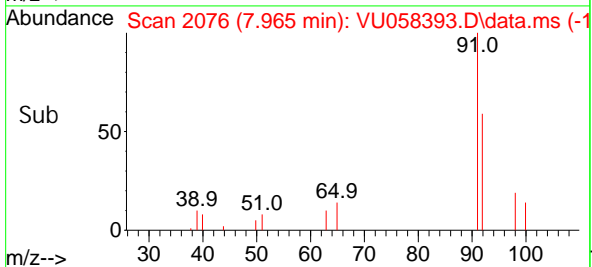
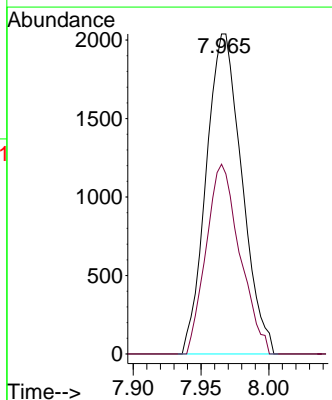
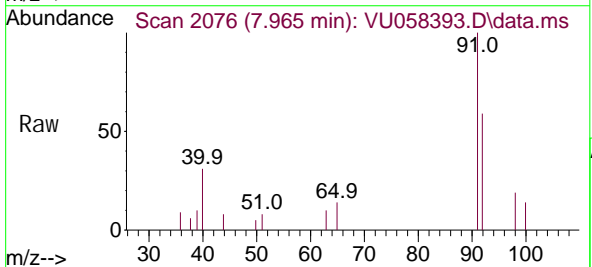
Instrument :  
 MSVOA\_U  
 ClientSampleId :

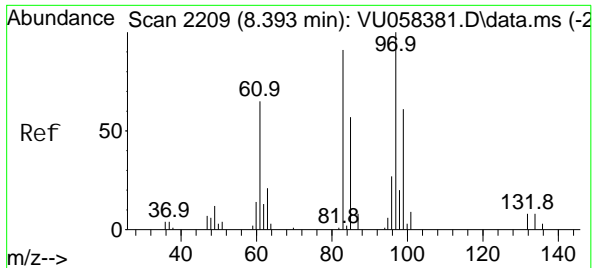
Tgt Ion: 63 Resp: 3993  
 Ion Ratio Lower Upper  
 63 100  
 112 0.0 2.6 4.0#



#42  
 Tol uene  
 Concen: 0.123 ug/L  
 RT: 7.965 min Scan# 2076  
 Delta R.T. 0.003 min  
 Lab File: VU058393.D  
 Acq: 05 Apr 2024 02:18

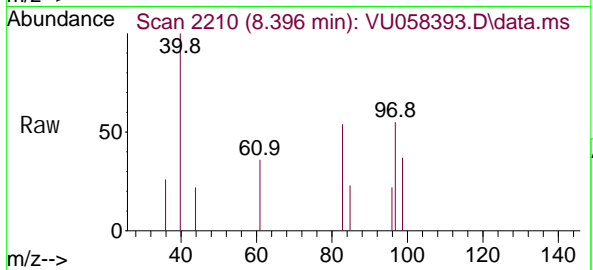
Tgt Ion: 91 Resp: 3731  
 Ion Ratio Lower Upper  
 91 100  
 92 59.3 39.5 73.3





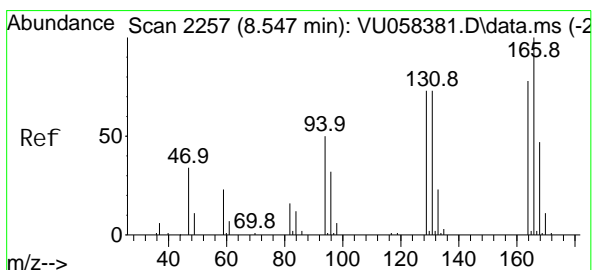
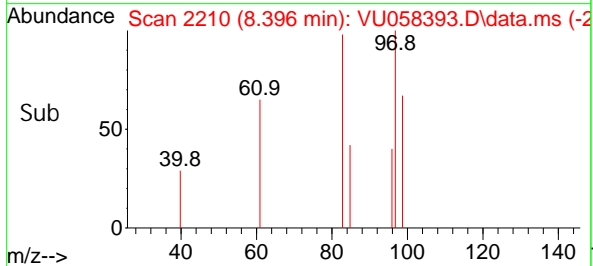
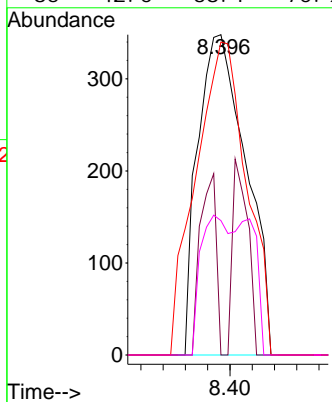
#45  
 1,1,2-Trichloroethane  
 Concen: 0.118 ug/L  
 RT: 8.396 min Scan# 2110  
 Delta R.T. 0.003 min  
 Lab File: VU058393.D  
 Acq: 05 Apr 2024 02:18

Instrument : MSVOA\_U  
 ClientSampleId :



Tgt Ion: 97 Resp: 523

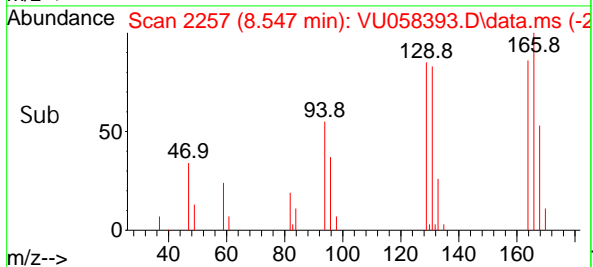
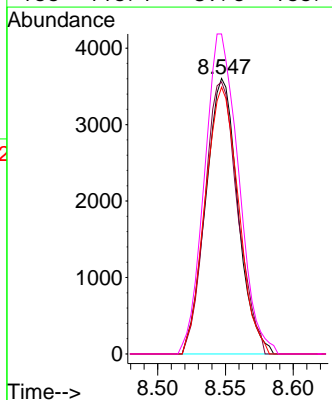
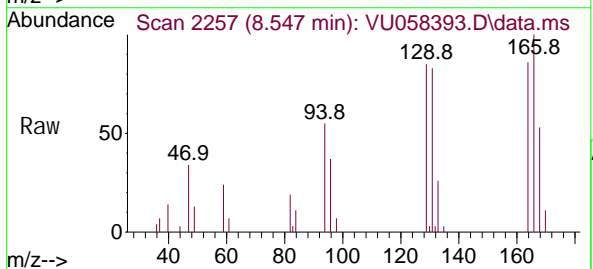
Ion	Ratio	Lower	Upper
97	100		
99	0.0	43.7	81.1#
83	97.7	64.5	119.7
85	42.0	38.1	70.9

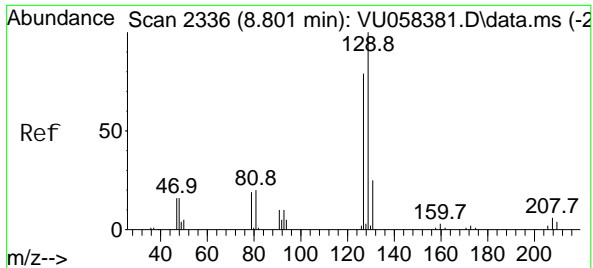


#47  
 Tetrachloroethene  
 Concen: 1.116 ug/L  
 RT: 8.547 min Scan# 2257  
 Delta R.T. -0.000 min  
 Lab File: VU058393.D  
 Acq: 05 Apr 2024 02:18

Tgt Ion: 164 Resp: 5968

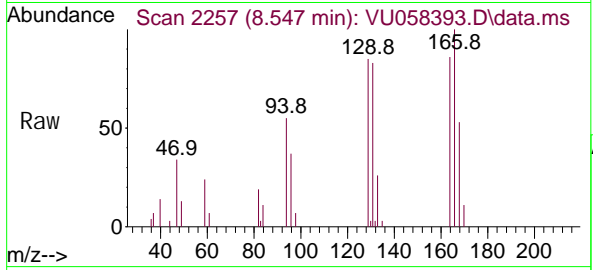
Ion	Ratio	Lower	Upper
164	100		
129	98.8	67.3	125.1
131	96.8	65.5	121.6
166	116.1	89.5	166.1





#49  
 Di bromochloromethane  
 Concen: 1.163 ug/L  
 RT: 8.547 min Scan# 21  
 Delta R.T. -0.254 min  
 Lab File: VU058393.D  
 Acq: 05 Apr 2024 02:18

Instrument : MSVOA\_U  
 ClientSampleId :



Tgt Ion: 129 Resp: 5979

Ion	Ratio	Lower	Upper
129	100		
127	0.0	53.5	99.5#

