

Data Path : Z:\voasrv\HPCHEM1\MSVOA_U\Data\VU040524\
 Data File : VU058424.D
 Acq On : 05 Apr 2024 17:09
 Operator : MD/SY
 Sample : P1925-18DL 2000X
 Misc : 25.0mL/MSVOA_U/WATER
 ALS Vial : 23 Sample Multiplier: 1

Instrument :
 MSVOA_U
ClientSampleId :

Quant Time: Apr 05 23:37:42 2024
 Quant Method : Z:\voasrv\HPCHEM1\MSVOA_U\Method\SFAMUTRO40424WMA.M
 Quant Title : TRACE VOA SFAM1.0
 QLast Update : Fri Apr 05 23:33:02 2024
 Response via : Initial Calibration

| Compound | R.T. | QI on | Response | Conc | Units | Dev(Min) |
|------------------------------------|--------|-------|----------|----------|--------|----------|
| Internal Standards | | | | | | |
| 1) 1,4-Difluorobenzene | 6.242 | 114 | 78195 | 5.000 | ug/L | 0.00 |
| 28) Chlorobenzene-d5 | 9.412 | 117 | 75885 | 5.000 | ug/L | 0.00 |
| 58) 1,4-Dichlorobenzene-d4 | 11.807 | 152 | 34024 | 5.000 | ug/L | 0.00 |
| System Monitoring Compounds | | | | | | |
| 4) Vinyl chloride-d3 | 1.592 | 65 | 23115 | 4.465 | ug/L | 0.00 |
| Spike Amount | 5.000 | Range | 40 - 130 | Recovery | = | 89.200% |
| 7) Chloroethane-d5 | 1.908 | 69 | 21455 | 4.769 | ug/L | 0.00 |
| Spike Amount | 5.000 | Range | 65 - 130 | Recovery | = | 95.400% |
| 11) 1,1-Dichloroethene-d2 | 2.560 | 65 | 10531 | 4.494 | ug/L | 0.00 |
| Spike Amount | 5.000 | Range | 60 - 125 | Recovery | = | 89.800% |
| 20) 2-Butanone-d5 | 4.624 | 46 | 57240 | 52.466 | ug/L | -0.01 |
| Spike Amount | 50.000 | Range | 40 - 130 | Recovery | = | 104.940% |
| 24) Chloroform-d | 5.055 | 84 | 50162 | 4.854 | ug/L | 0.00 |
| Spike Amount | 5.000 | Range | 70 - 125 | Recovery | = | 97.000% |
| 26) 1,2-Dichloroethane-d4 | 5.695 | 65 | 25379 | 5.262 | ug/L | 0.00 |
| Spike Amount | 5.000 | Range | 70 - 130 | Recovery | = | 105.200% |
| 32) Benzene-d6 | 5.718 | 84 | 97204 | 4.758 | ug/L | 0.00 |
| Spike Amount | 5.000 | Range | 70 - 125 | Recovery | = | 95.200% |
| 36) 1,2-Dichloropropane-d6 | 6.682 | 67 | 31328 | 4.890 | ug/L | 0.00 |
| Spike Amount | 5.000 | Range | 60 - 140 | Recovery | = | 97.800% |
| 41) Toluene-d8 | 7.891 | 98 | 81595 | 4.504 | ug/L | 0.00 |
| Spike Amount | 5.000 | Range | 70 - 130 | Recovery | = | 90.000% |
| 43) trans-1,3-Dichloropropene | 8.177 | 79 | 9272 | 4.662 | ug/L | 0.00 |
| Spike Amount | 5.000 | Range | 55 - 130 | Recovery | = | 93.200% |
| 46) 2-Hexanone-d5 | 8.631 | 63 | 39530 | 48.190 | ug/L | 0.00 |
| Spike Amount | 50.000 | Range | 45 - 130 | Recovery | = | 96.380% |
| 56) 1,1,2,2-Tetrachloroethene | 10.750 | 84 | 20642 | 4.564 | ug/L | 0.00 |
| Spike Amount | 5.000 | Range | 65 - 120 | Recovery | = | 91.200% |
| 66) 1,2-Dichlorobenzene-d4 | 12.187 | 152 | 27285 | 4.761 | ug/L | 0.00 |
| Spike Amount | 5.000 | Range | 80 - 120 | Recovery | = | 95.200% |
| Target Compounds | | | | | | |
| 16) Methylene chloride | 3.036 | 84 | 13067 | 1.777 | ug/L | 99 |
| 22) cis-1,2-Dichloroethene | 4.657 | 96 | 29022 | 4.450 | ug/L | 97 |
| 34) Trichloroethene | 6.538 | 95 | 3195 | 0.461 | ug/L | 98 |
| 35) Methylcyclohexane | 6.682 | 83 | 6939 | 0.664 | ug/L # | 19 |
| 37) 1,2-Dichloropropane | 6.679 | 63 | 3592 | 0.496 | ug/L # | 90 |
| 42) Toluene | 7.962 | 91 | 106663 | 3.697 | ug/L | 98 |
| 47) Tetrachloroethene | 8.547 | 164 | 13368 | 2.630 | ug/L | 99 |
| 49) Dibromochloromethane | 8.547 | 129 | 13642 | 2.792 | ug/L # | 11 |
| 51) Chlorobenzene | 9.441 | 112 | 7132 | 0.409 | ug/L | 97 |
| 52) Ethylbenzene | 9.566 | 91 | 4179 | 0.137 | ug/L | 99 |
| 53) m,p-Xylene | 9.689 | 106 | 5967 | 0.545 | ug/L | 95 |
| 54) o-Xylene | 10.097 | 106 | 1860 | 0.173 | ug/L | 91 |
| 61) 1,2,3-Trichloropropane | 11.743 | 75 | 1488 | 0.429 | ug/L # | 59 |
| 63) 1,2,4-Trimethylbenzene | 11.463 | 105 | 2343 | 0.113 | ug/L | 98 |
| 64) 1,3-Dichlorobenzene | 11.743 | 146 | 4144 | 0.342 | ug/L | 98 |
| 65) 1,4-Dichlorobenzene | 11.830 | 146 | 22120 | 1.876 | ug/L | 96 |
| 67) 1,2-Dichlorobenzene | 12.206 | 146 | 5263 | 0.478 | ug/L | 96 |
| 69) 1,3,5-Trichlorobenzene | 13.833 | 180 | 47174 | 5.273 | ug/L | 99 |
| 70) 1,2,4-trichlorobenzene | 13.833 | 180 | 47174 | 6.838 | ug/L | 99 |

Data Path : Z:\voasrv\HPCHEM1\MSVOA_U\Data\VU040524\
 Data File : VU058424.D
 Acq On : 05 Apr 2024 17:09
 Operator : MD/SY
 Sample : P1925-18DL 2000X
 Misc : 25.0mL/MSVOA_U/WATER
 ALS Vial : 23 Sample Multiplier: 1

Instrument :
 MSVOA_U
 ClientSampleId :

Quant Time: Apr 05 23:37:42 2024
 Quant Method : Z:\voasrv\HPCHEM1\MSVOA_U\Method\SFAMUTR040424WMA.M
 Quant Title : TRACE VOA SFAM1.0
 QLast Update : Fri Apr 05 23:33:02 2024
 Response via : Initial Calibration

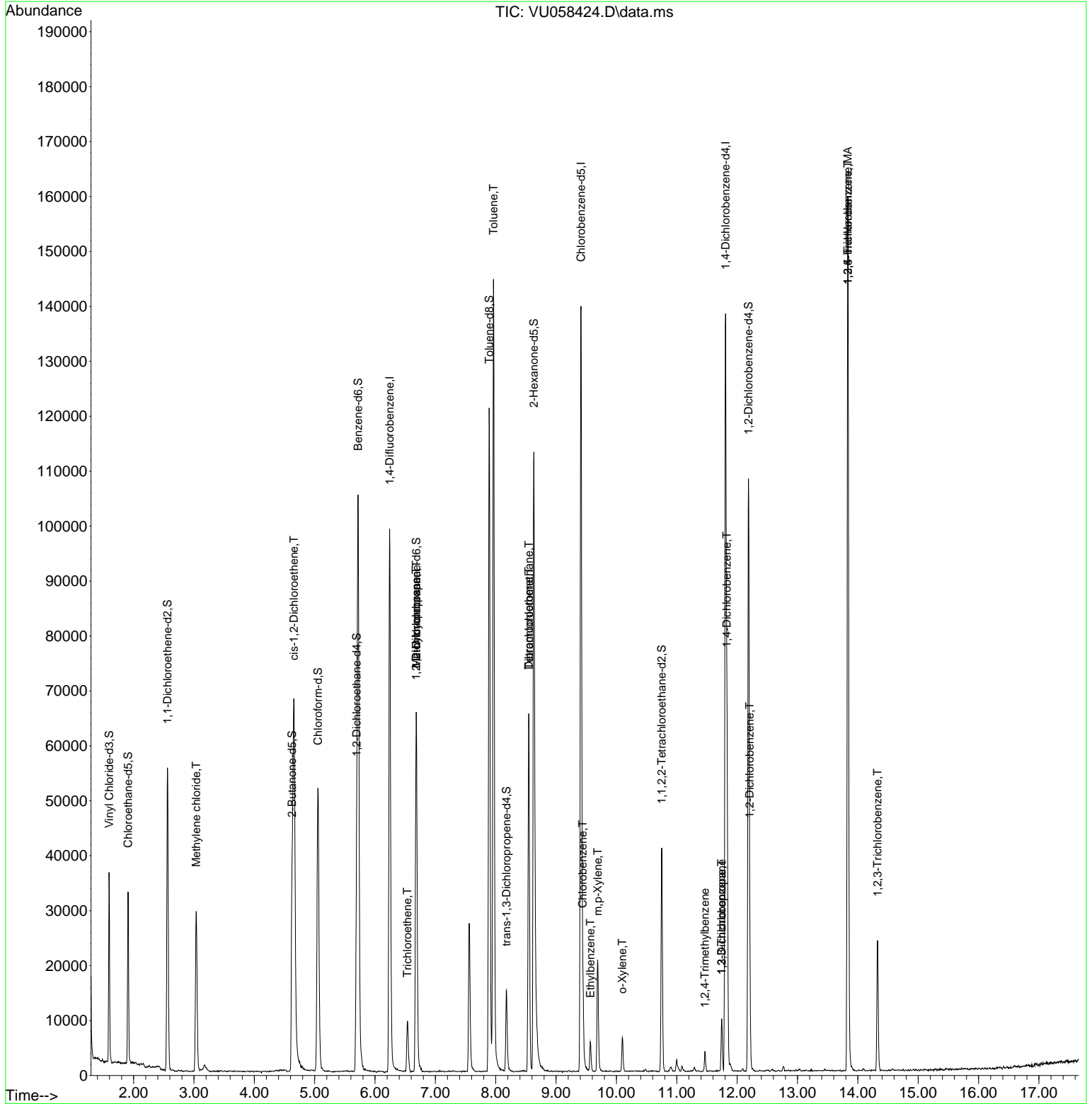
| Compound | R.T. | QI on | Response | Conc | Units | Dev(Min) |
|-----------------------------|--------|-------|----------|-------|-------|----------|
| 72) 1,2,3-Tri chlorobenzene | 14.325 | 180 | 7844 | 1.377 | ug/L | 95 |

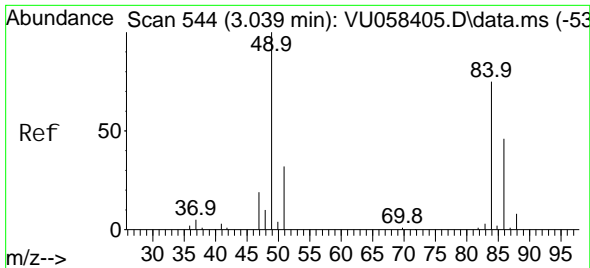
(#) = qualifier out of range (m) = manual integration (+) = signals summed

Data Path : Z:\voasrv\HPCHEM1\MSVOA_U\Data\VU040524\
 Data File : VU058424.D
 Acq On : 05 Apr 2024 17:09
 Operator : MD/SY
 Sample : P1925-18DL 2000X
 Misc : 25.0mL/MSVOA_U/WATER
 ALS Vial : 23 Sample Multiplier: 1

Instrument :
 MSVOA_U
 ClientSampleId :

Quant Time: Apr 05 23:37:42 2024
 Quant Method : Z:\voasrv\HPCHEM1\MSVOA_U\Method\SFAMUTR040424WMA.M
 Quant Title : TRACE VOA SFAM1.0
 QLast Update : Fri Apr 05 23:33:02 2024
 Response via : Initial Calibration



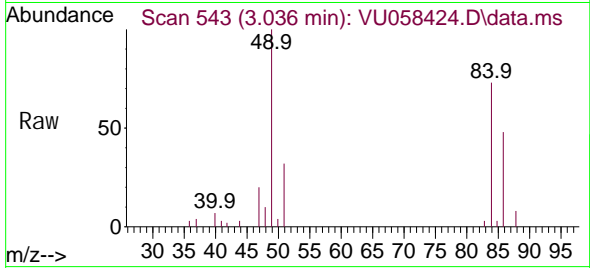


#16
 Methylene chloride
 Concen: 1.777 ug/L
 RT: 3.036 min Scan# 544
 Delta R.T. -0.003 min
 Lab File: VU058424.D
 Acq: 05 Apr 2024 17:09

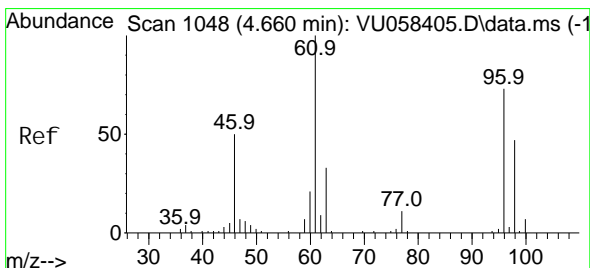
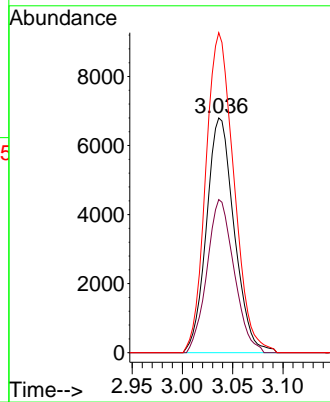
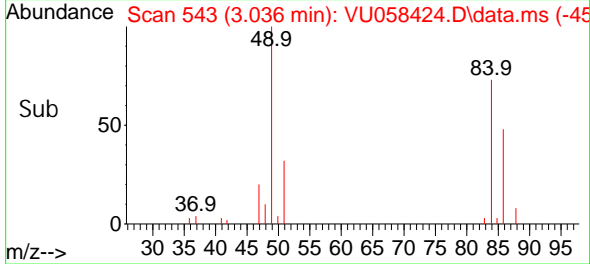
Instrument :

MSVOA_U

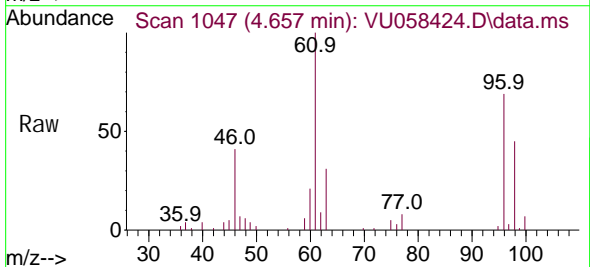
ClientSampleId :



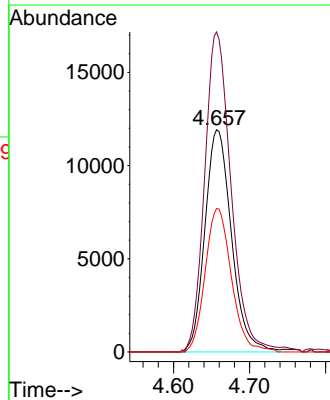
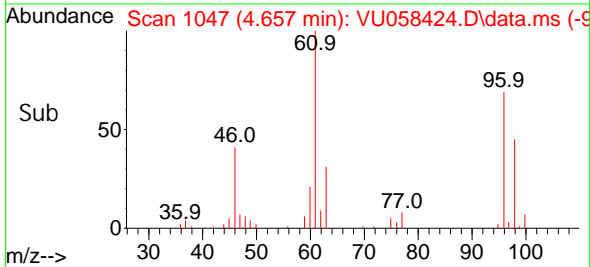
Tgt Ion: 84 Resp: 13067
 Ion Ratio Lower Upper
 84 100
 86 65.3 44.3 82.3
 49 136.3 96.0 178.2

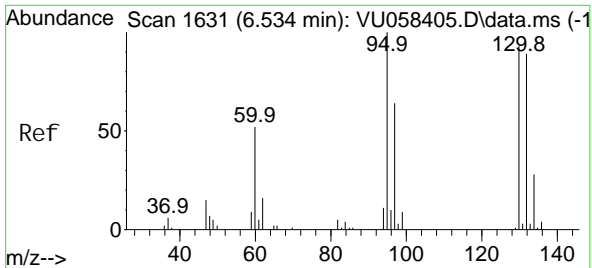


#22
 cis-1,2-Dichloroethene
 Concen: 4.450 ug/L
 RT: 4.657 min Scan# 1047
 Delta R.T. -0.003 min
 Lab File: VU058424.D
 Acq: 05 Apr 2024 17:09



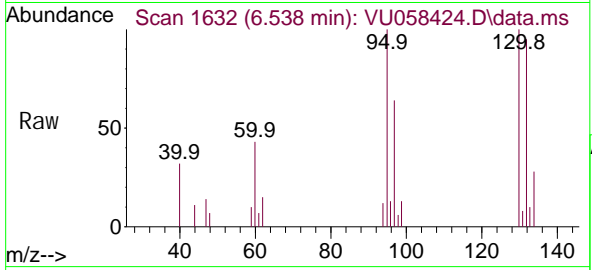
Tgt Ion: 96 Resp: 29022
 Ion Ratio Lower Upper
 96 100
 61 144.0 98.1 182.3
 98 64.5 43.6 81.0





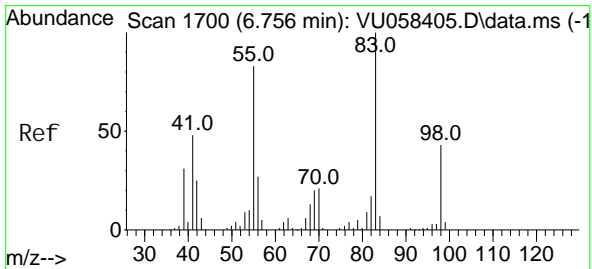
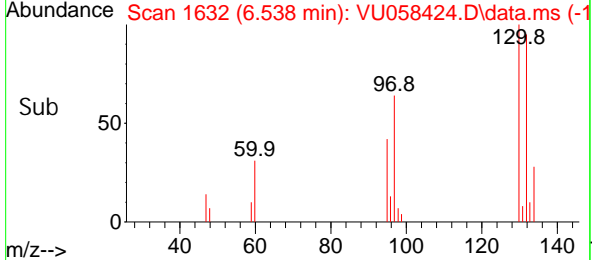
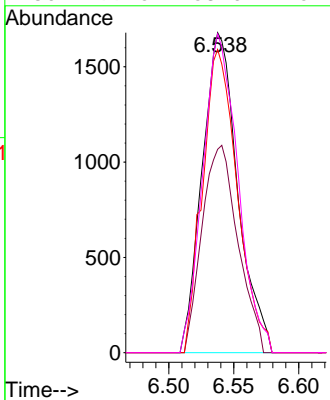
#34
 Trichloroethene
 Concen: 0.461 ug/L
 RT: 6.538 min Scan# 1632
 Delta R.T. 0.003 min
 Lab File: VU058424.D
 Acq: 05 Apr 2024 17:09

Instrument : MSVOA_U
 ClientSampleId :



Tgt Ion: 95 Resp: 3195

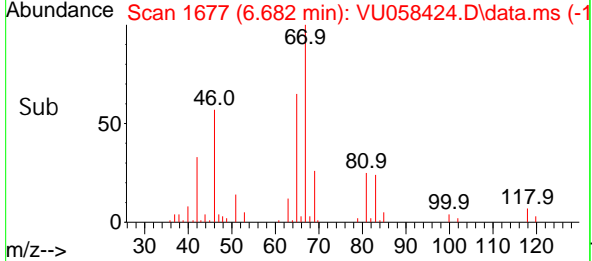
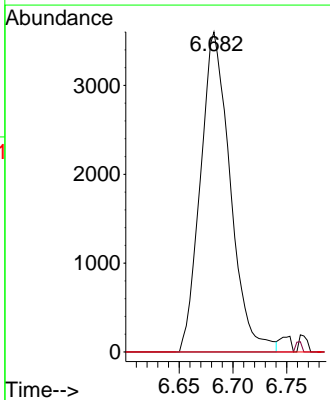
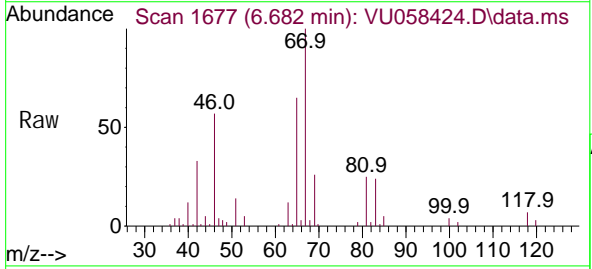
| Ion | Ratio | Lower | Upper |
|-----|-------|-------|-------|
| 95 | 100 | | |
| 97 | 63.5 | 45.6 | 84.6 |
| 132 | 94.8 | 64.8 | 120.3 |
| 130 | 99.6 | 68.0 | 126.2 |

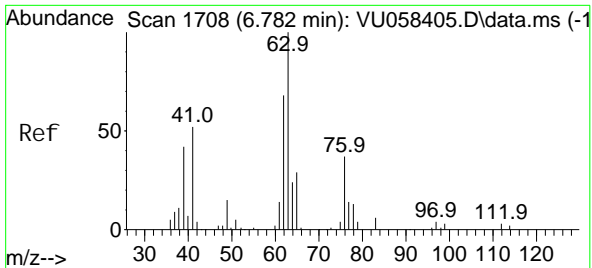


#35
 Methyl cycl ohexane
 Concen: 0.664 ug/L
 RT: 6.682 min Scan# 1677
 Delta R.T. -0.074 min
 Lab File: VU058424.D
 Acq: 05 Apr 2024 17:09

Tgt Ion: 83 Resp: 6939

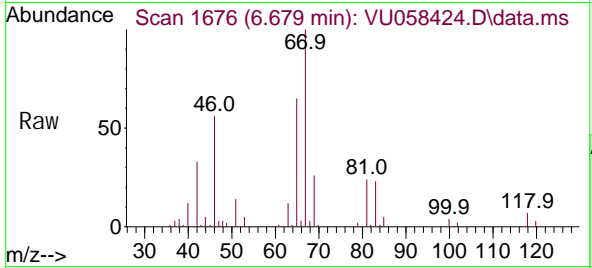
| Ion | Ratio | Lower | Upper |
|-----|-------|-------|-------|
| 83 | 100 | | |
| 55 | 0.6 | 66.2 | 99.4# |
| 98 | 3.9 | 34.6 | 52.0# |



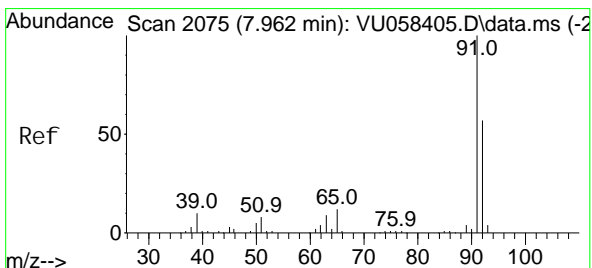
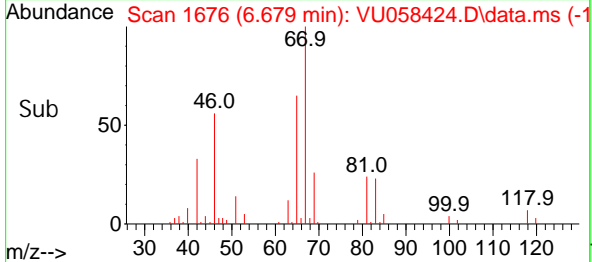
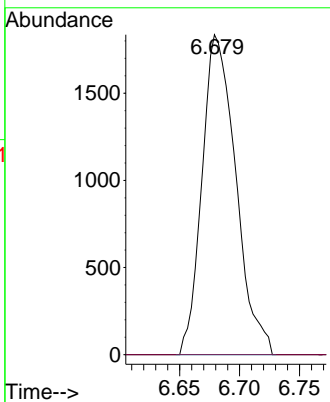


#37
 1, 2-Di chl oropropane
 Concen: 0.496 ug/L
 RT: 6.679 min Scan# 10
 Delta R.T. -0.103 min
 Lab File: VU058424.D
 Acq: 05 Apr 2024 17:09

Instrument :
 MSVOA_U
 ClientSampleId :

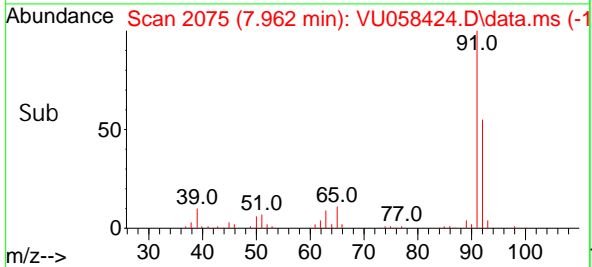
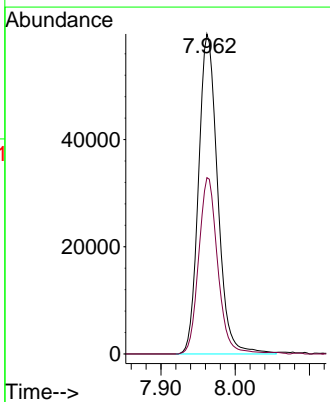
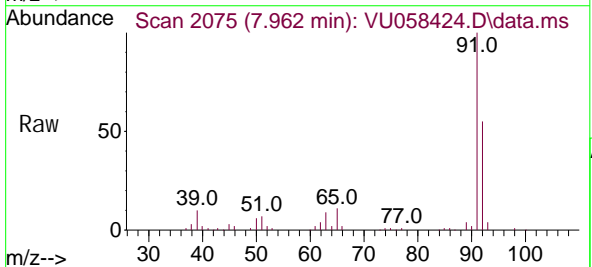


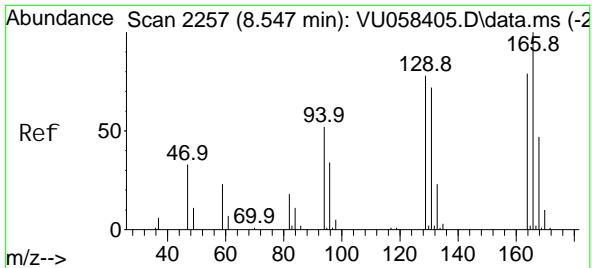
Tgt Ion: 63 Resp: 3592
 Ion Ratio Lower Upper
 63 100
 112 0.0 2.6 4.0#



#42
 Tol uene
 Concen: 3.697 ug/L
 RT: 7.962 min Scan# 2075
 Delta R.T. 0.000 min
 Lab File: VU058424.D
 Acq: 05 Apr 2024 17:09

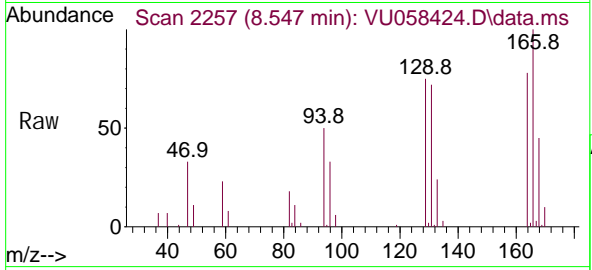
Tgt Ion: 91 Resp: 106663
 Ion Ratio Lower Upper
 91 100
 92 55.1 39.5 73.3



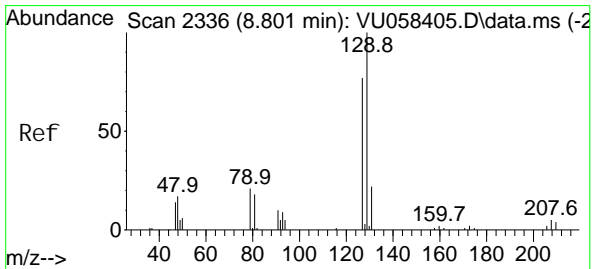
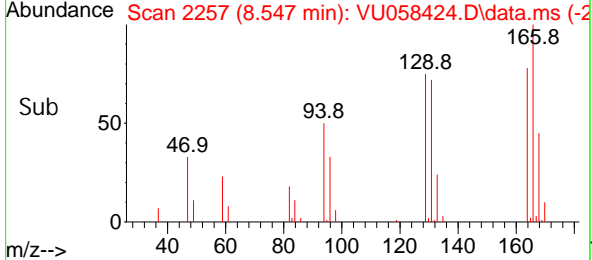
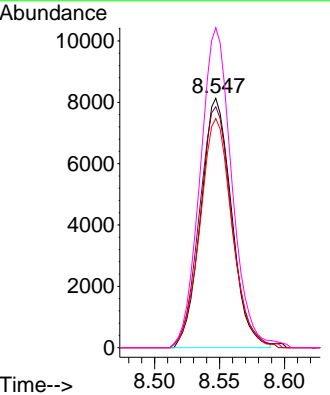


#47
 Tetrachloroethene
 Concen: 2.630 ug/L
 RT: 8.547 min Scan# 2257
 Delta R.T. 0.000 min
 Lab File: VU058424.D
 Acq: 05 Apr 2024 17:09

Instrument : MSVOA_U
 ClientSampleId :

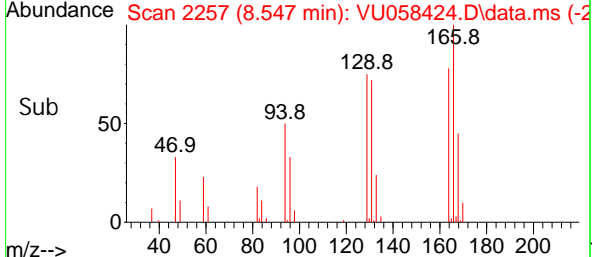
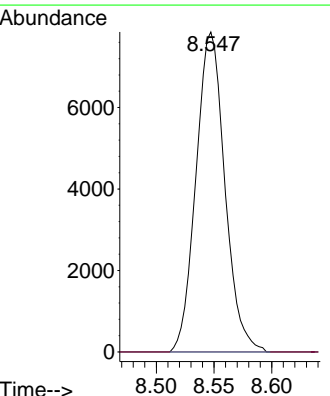
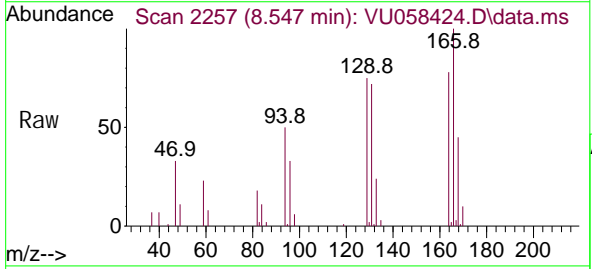


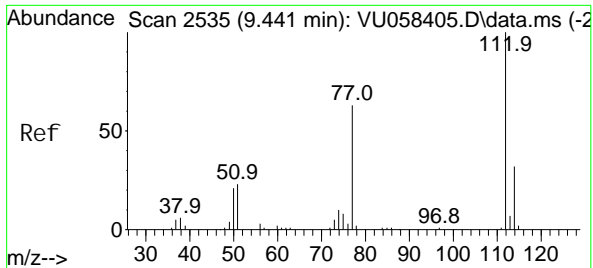
Tgt Ion: 164 Resp: 13368
 Ion Ratio Lower Upper
 164 100
 129 96.6 67.3 125.1
 131 91.9 65.5 121.6
 166 128.3 89.5 166.1



#49
 Di bromochloromethane
 Concen: 2.792 ug/L
 RT: 8.547 min Scan# 2257
 Delta R.T. -0.254 min
 Lab File: VU058424.D
 Acq: 05 Apr 2024 17:09

Tgt Ion: 129 Resp: 13642
 Ion Ratio Lower Upper
 129 100
 127 0.0 53.5 99.5#

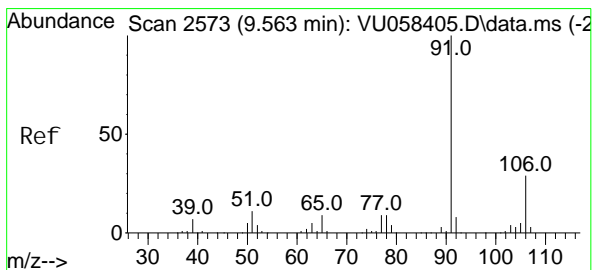
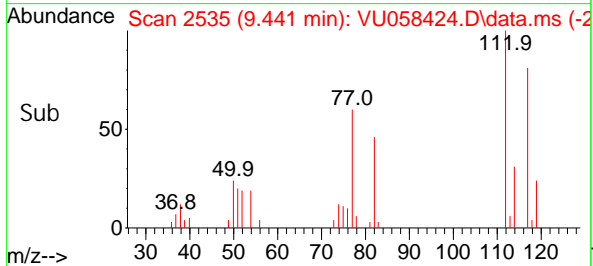
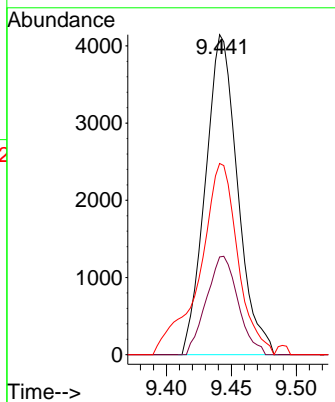
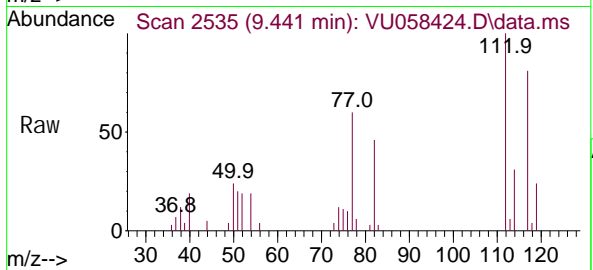




#51
 Chlorobenzene
 Concen: 0.409 ug/L
 RT: 9.441 min Scan# 2535
 Delta R.T. 0.000 min
 Lab File: VU058424.D
 Acq: 05 Apr 2024 17:09

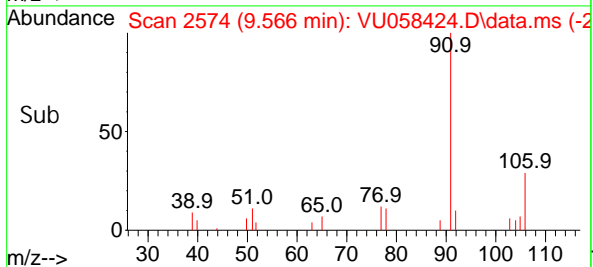
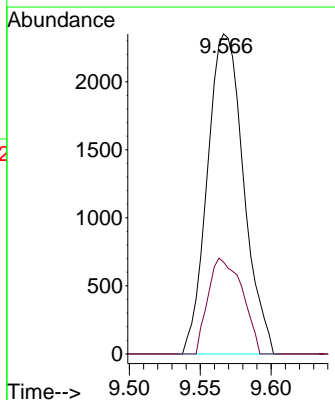
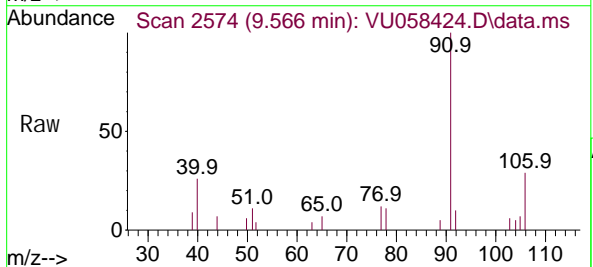
Instrument : MSVOA_U
 ClientSampleId :

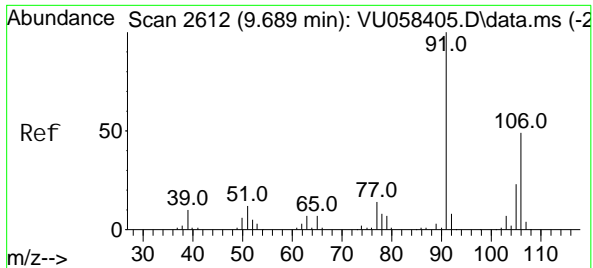
| Tgt Ion | Resp | Lower | Upper |
|---------|------|-------|-------|
| 112 | 7132 | | |
| 112 | 100 | | |
| 114 | 30.6 | 22.4 | 41.6 |
| 77 | 59.8 | 50.1 | 75.1 |



#52
 Ethyl benzene
 Concen: 0.137 ug/L
 RT: 9.566 min Scan# 2574
 Delta R.T. 0.003 min
 Lab File: VU058424.D
 Acq: 05 Apr 2024 17:09

| Tgt Ion | Resp | Lower | Upper |
|---------|------|-------|-------|
| 91 | 4179 | | |
| 91 | 100 | | |
| 106 | 28.8 | 20.6 | 38.4 |

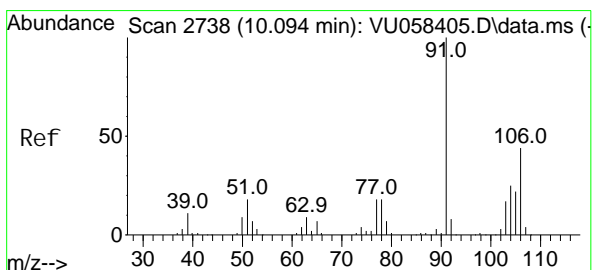
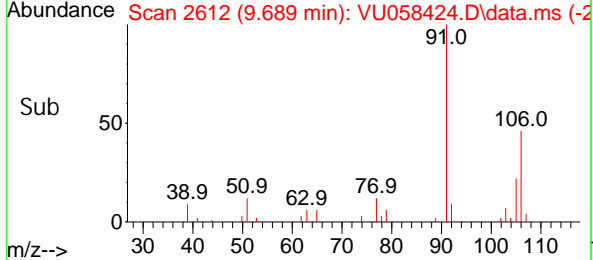
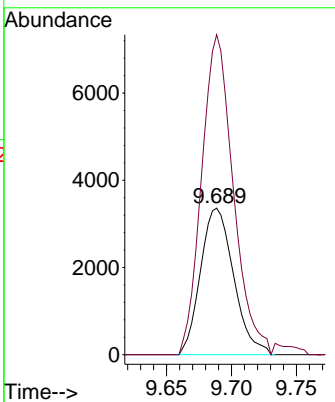
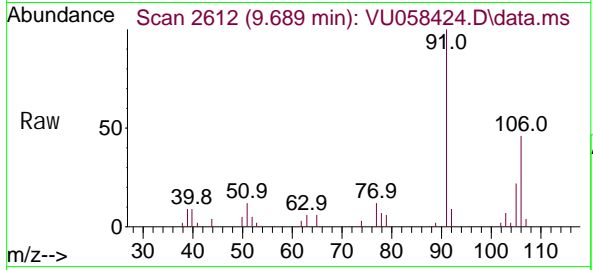




#53
 m, p-Xyl ene
 Concen: 0.545 ug/L
 RT: 9.689 min Scan# 2612
 Delta R.T. 0.000 min
 Lab File: VU058424.D
 Acq: 05 Apr 2024 17:09

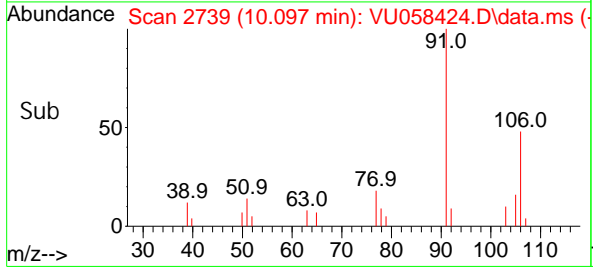
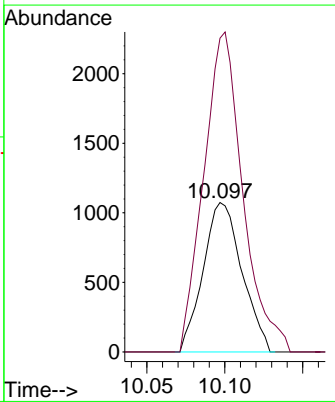
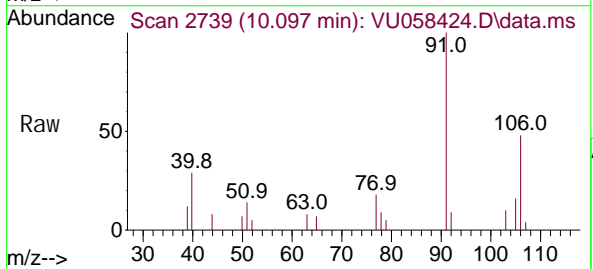
Instrument : MSVOA_U
 ClientSampleId :

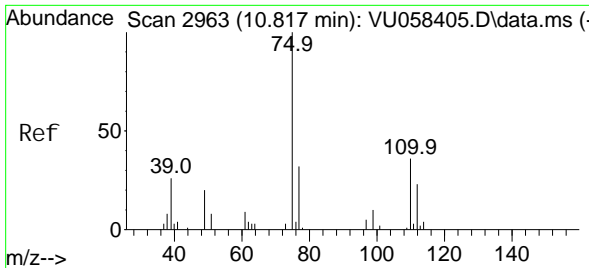
Tgt Ion: 106 Resp: 5967
 Ion Ratio Lower Upper
 106 100
 91 218.4 147.8 274.4



#54
 o-Xyl ene
 Concen: 0.173 ug/L
 RT: 10.097 min Scan# 2739
 Delta R.T. 0.003 min
 Lab File: VU058424.D
 Acq: 05 Apr 2024 17:09

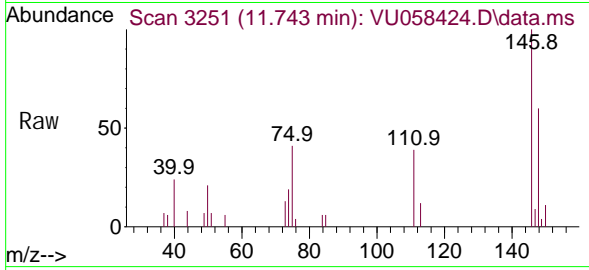
Tgt Ion: 106 Resp: 1860
 Ion Ratio Lower Upper
 106 100
 91 210.0 156.9 291.5



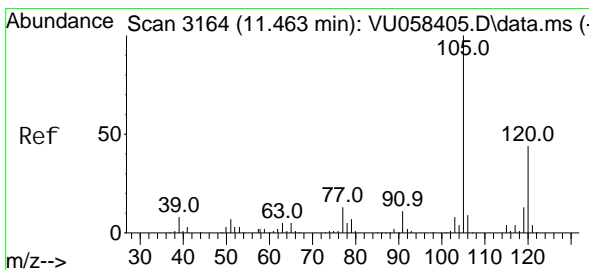
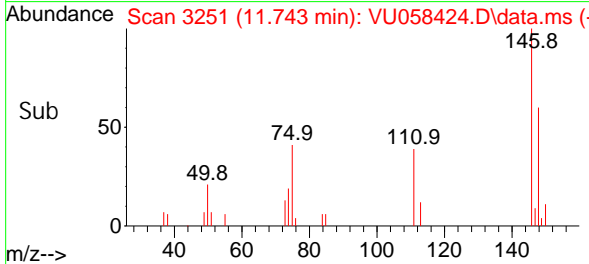
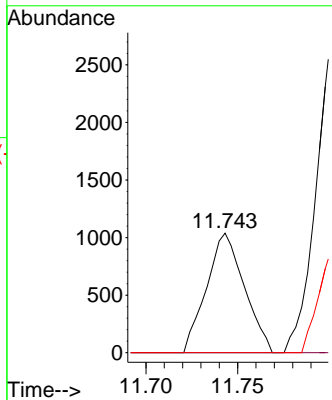


#61
 1, 2, 3-Tri chloropropane
 Concen: 0.429 ug/L
 RT: 11.743 min Scan# 3164
 Delta R.T. 0.926 min
 Lab File: VU058424.D
 Acq: 05 Apr 2024 17:09

Instrument : MSVOA_U
 ClientSampleId :

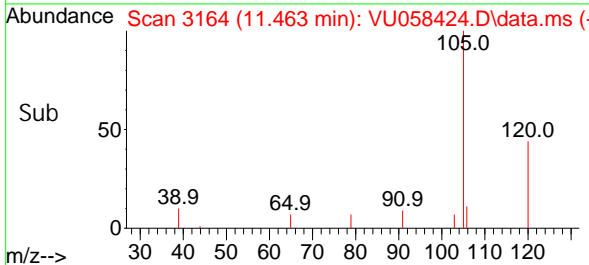
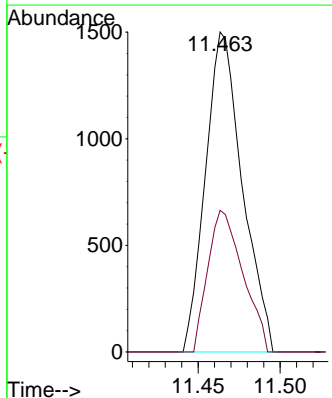
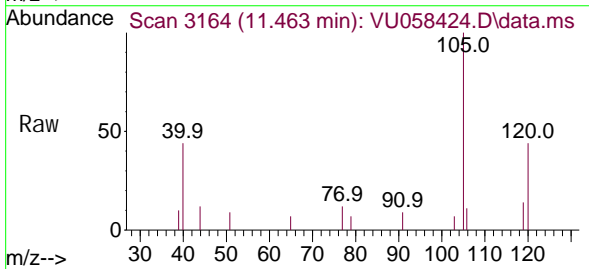


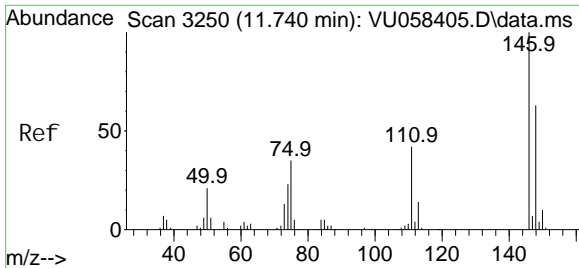
Tgt Ion: 75 Resp: 1488
 Ion Ratio Lower Upper
 75 100
 110 0.0 25.8 38.6#
 77 18.4 25.1 37.7#



#63
 1, 2, 4-Tri methyl benzene
 Concen: 0.113 ug/L
 RT: 11.463 min Scan# 3164
 Delta R.T. 0.000 min
 Lab File: VU058424.D
 Acq: 05 Apr 2024 17:09

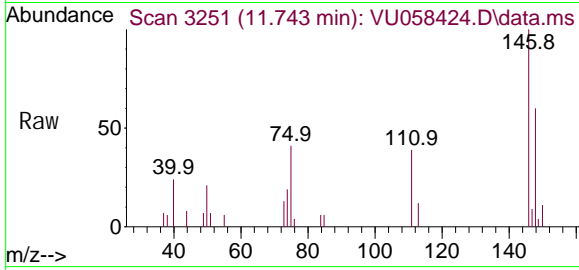
Tgt Ion: 105 Resp: 2343
 Ion Ratio Lower Upper
 105 100
 120 42.1 34.7 52.1



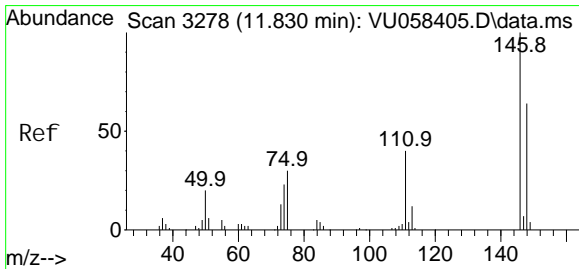
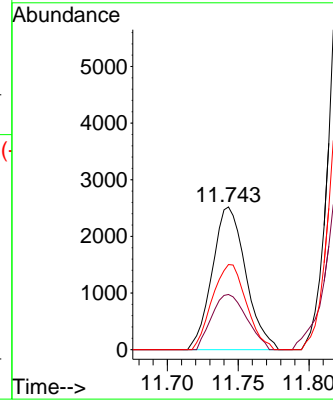
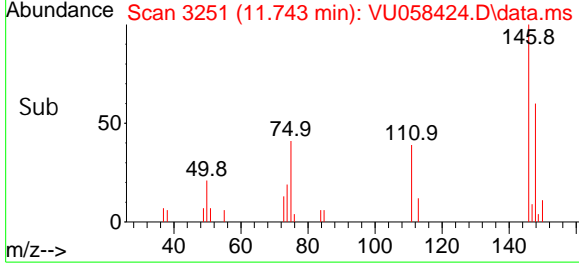


#64
 1, 3-Di chl orobenzene
 Concen: 0.342 ug/L
 RT: 11.743 min Scan# 3251
 Del ta R. T. 0.003 min
 Lab File: VU058424.D
 Acq: 05 Apr 2024 17:09

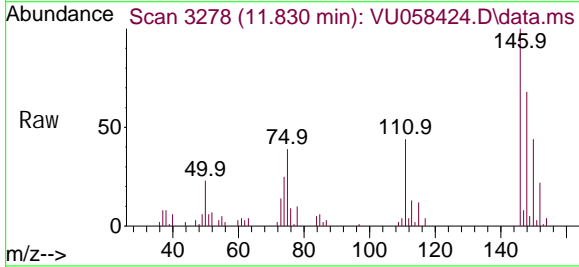
Instrument :
 MSVOA_U
 ClientSampleId :



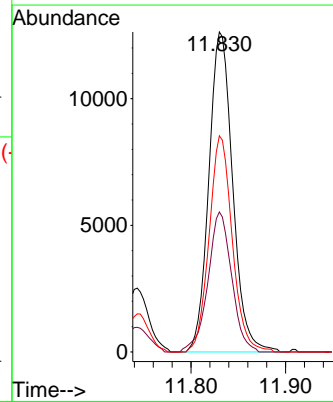
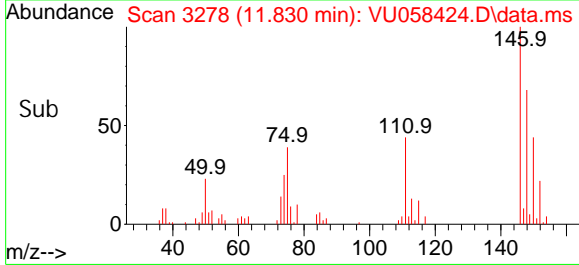
Tgt Ion: 146 Resp: 4144
 Ion Ratio Lower Upper
 146 100
 111 38.6 28.8 53.4
 148 64.0 44.9 83.3

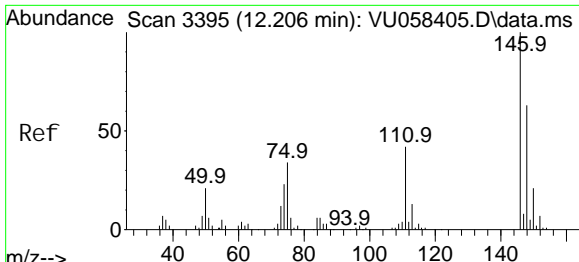


#65
 1, 4-Di chl orobenzene
 Concen: 1.876 ug/L
 RT: 11.830 min Scan# 3278
 Del ta R. T. 0.000 min
 Lab File: VU058424.D
 Acq: 05 Apr 2024 17:09



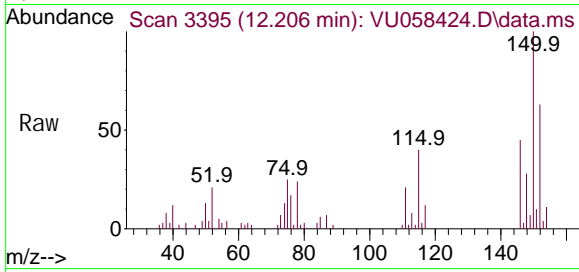
Tgt Ion: 146 Resp: 22120
 Ion Ratio Lower Upper
 146 100
 111 43.8 28.8 53.6
 148 67.5 45.3 84.1



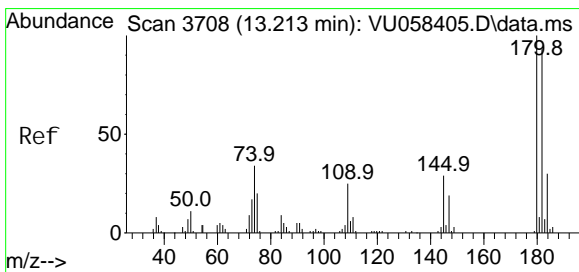
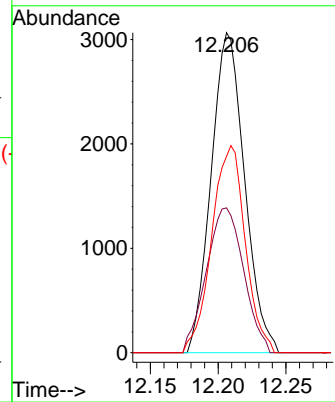
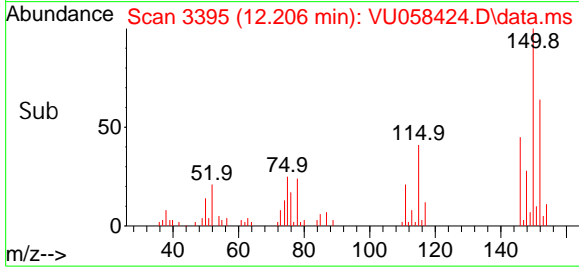


#67
 1, 2-Di chl orobenzene
 Concen: 0.478 ug/L
 RT: 12.206 min Scan# 31
 Delta R.T. 0.000 min
 Lab File: VU058424.D
 Acq: 05 Apr 2024 17:09

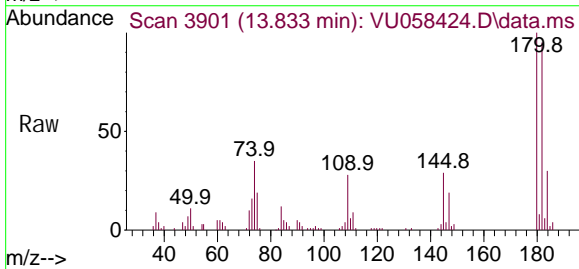
Instrument : MSVOA_U
 ClientSampleId :



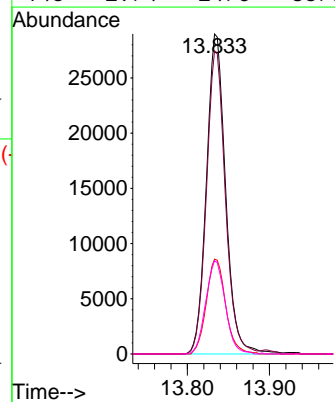
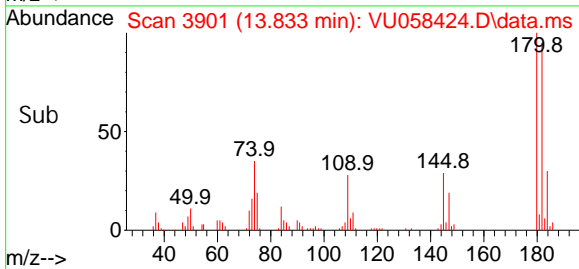
Tgt Ion: 146 Resp: 5263
 Ion Ratio Lower Upper
 146 100
 111 45.3 35.0 52.4
 148 61.4 52.5 78.7

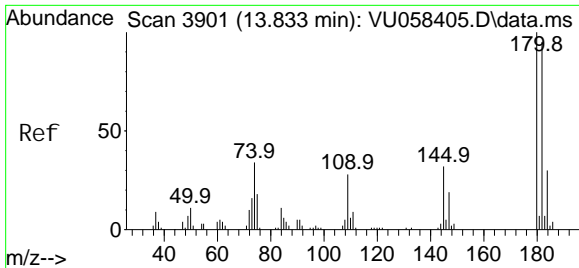


#69
 1, 3, 5-Tri chl orobenzene
 Concen: 5.273 ug/L
 RT: 13.833 min Scan# 3901
 Delta R.T. 0.621 min
 Lab File: VU058424.D
 Acq: 05 Apr 2024 17:09



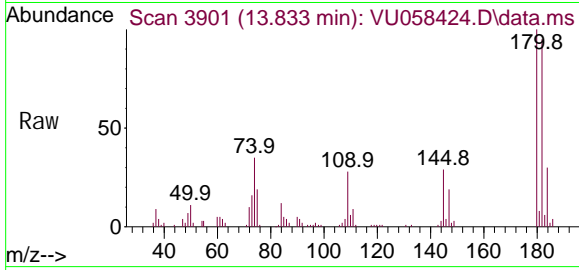
Tgt Ion: 180 Resp: 47174
 Ion Ratio Lower Upper
 180 100
 182 93.4 75.7 113.5
 184 29.8 24.3 36.5
 145 29.4 24.0 36.0



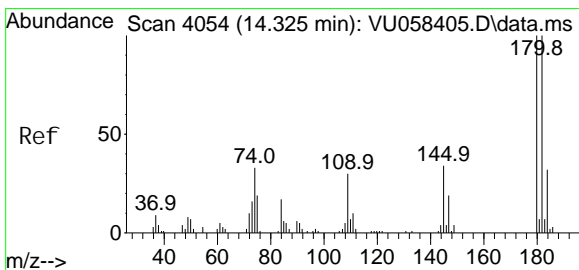
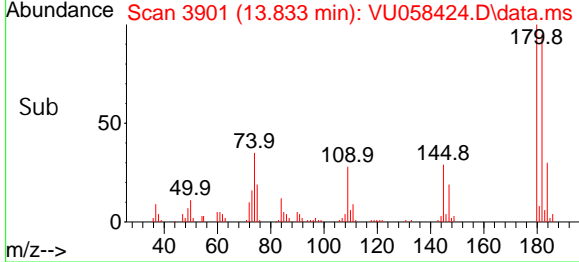
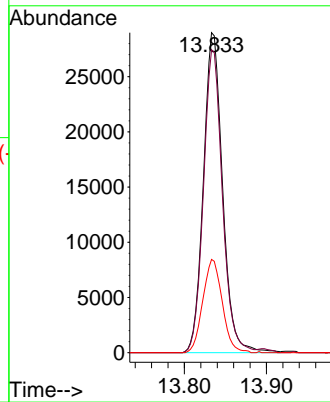


#70
 1, 2, 4-tri chlorobenzene
 Concen: 6.838 ug/L
 RT: 13.833 min Scan# 3901
 Delta R.T. 0.000 min
 Lab File: VU058424.D
 Acq: 05 Apr 2024 17:09

Instrument : MSVOA_U
 ClientSampleId :



Tgt Ion: 180 Resp: 47174
 Ion Ratio Lower Upper
 180 100
 182 93.4 74.4 111.6
 145 29.4 24.1 36.1



#72
 1, 2, 3-Tri chlorobenzene
 Concen: 1.377 ug/L
 RT: 14.325 min Scan# 4054
 Delta R.T. 0.000 min
 Lab File: VU058424.D
 Acq: 05 Apr 2024 17:09

Tgt Ion: 180 Resp: 7844
 Ion Ratio Lower Upper
 180 100
 182 88.6 75.9 113.9
 145 32.7 25.2 37.8

