

Data Path : Z:\VOASRV\HPCHEM1\MSVOA U\DATA\VU041420\
 Data File : VU037702.D
 Acq On : 14 Apr 2020 16:59
 Operator : JC/MD
 Sample : L2275-02
 Misc : 25mL/MSVOA U/WATER
 ALS Vial : 1 Sample Multiplier: 1

Instrument :
 MSVOA_U
 ClientSampleId :

Quant Time: Apr 15 03:04:33 2020
 Quant Method : Z:\VOASRV\HPCHEM1\MSVOA_U\METHOD\SOMUTR041420WMA.M
 Quant Title : TRACE VOA SOM01.0
 QLast Update : Wed Apr 15 03:02:33 2020
 Response via : Initial Calibration

Internal Standards	R.T.	QIon	Response	Conc	Units	Dev(Min)
1) 1,4-Difluorobenzene	6.28	114	315697	5.00	ug/L	0.00
28) Chlorobenzene-d5	9.44	117	296291	5.00	ug/L	0.00
60) 1,4-Dichlorobenzene-d4	11.83	152	144274	5.00	ug/L	0.00

System Monitoring Compounds

4) Vinyl Chloride-d3	1.61	65	119762	5.01	ug/L	0.00
Spiked Amount	5.000	Range	40 - 130	Recovery	=	100.20%
7) Chloroethane-d5	1.93	69	101815	5.05	ug/L	0.00
Spiked Amount	5.000	Range	65 - 130	Recovery	=	101.00%
11) 1,1-Dichloroethene-d2	2.59	63	156358	3.68	ug/L	0.00
Spiked Amount	5.000	Range	60 - 125	Recovery	=	73.60%
20) 2-Butanone-d5	4.66	46	325474	49.61	ug/L	0.00
Spiked Amount	50.000	Range	40 - 130	Recovery	=	99.22%
24) Chloroform-d	5.10	84	180885	4.74	ug/L	0.00
Spiked Amount	5.000	Range	70 - 125	Recovery	=	94.80%
26) 1,2-Dichloroethane-d4	5.74	65	107362	4.90	ug/L	0.00
Spiked Amount	5.000	Range	70 - 130	Recovery	=	98.00%
32) Benzene-d6	5.76	84	402713	5.02	ug/L	0.00
Spiked Amount	5.000	Range	70 - 125	Recovery	=	100.40%
36) 1,2-Dichloropropane-d6	6.72	67	131203	5.04	ug/L	0.00
Spiked Amount	5.000	Range	60 - 140	Recovery	=	100.80%
41) Toluene-d8	7.92	98	369794	5.09	ug/L	0.00
Spiked Amount	5.000	Range	70 - 130	Recovery	=	101.80%
43) trans-1,3-Dichloropropene-	8.20	79	58619	5.01	ug/L	0.00
Spiked Amount	5.000	Range	55 - 130	Recovery	=	100.20%
46) 2-Hexanone-d5	8.65	63	302288	50.46	ug/L	0.00
Spiked Amount	50.000	Range	45 - 130	Recovery	=	100.92%
57) 1,1,2,2-Tetrachloroethane-	10.77	84	101683	4.95	ug/L	0.00
Spiked Amount	5.000	Range	65 - 120	Recovery	=	99.00%
64) 1,2-Dichlorobenzene-d4	12.20	152	132399	5.14	ug/L	0.00
Spiked Amount	5.000	Range	80 - 120	Recovery	=	102.80%

Target Compounds

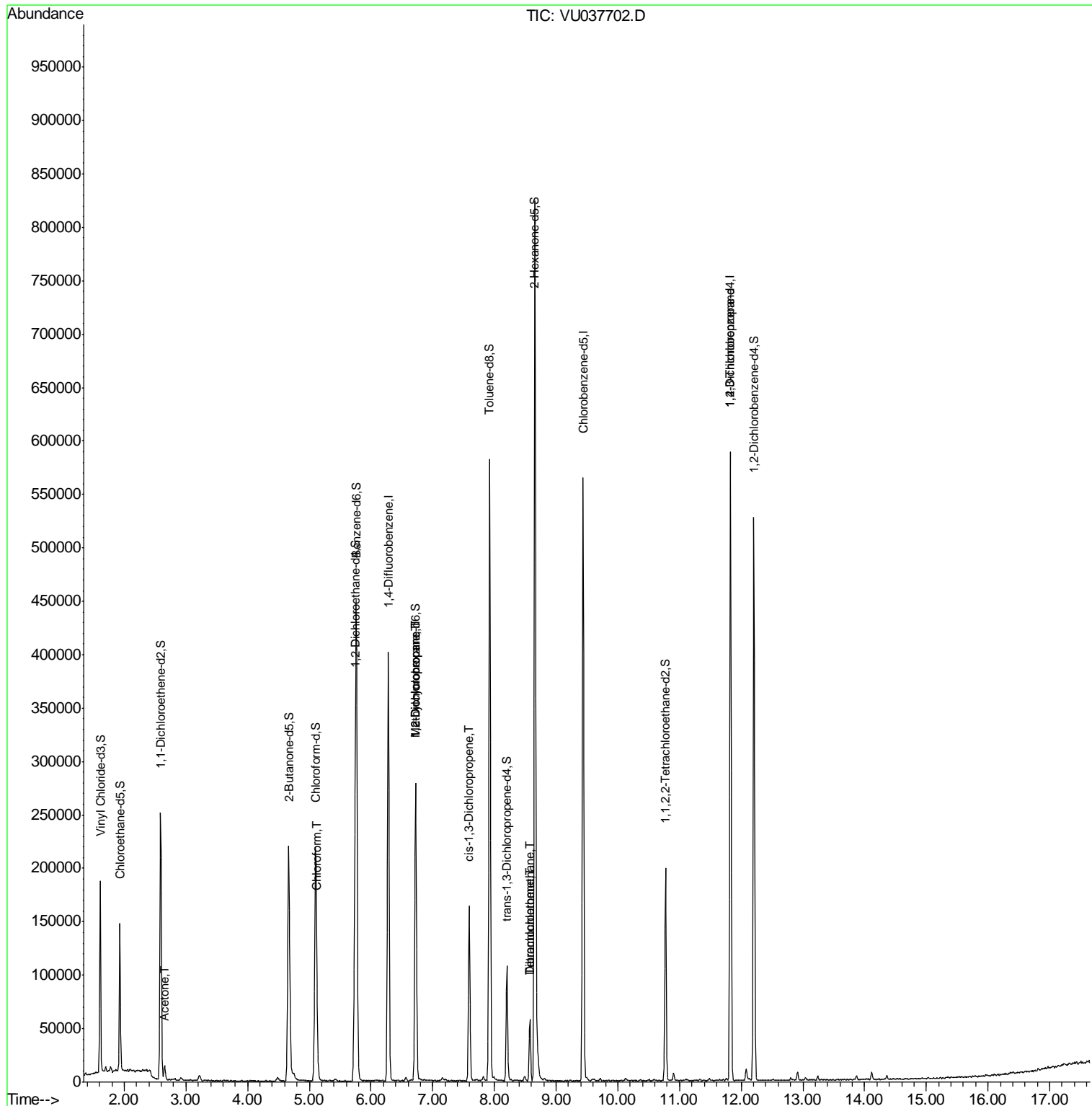
Target Compounds	R.T.	QIon	Response	Conc	Units	Ovalue
13) Acetone	2.65	43	13574	3.138	ug/L	97
25) Chloroform	5.13	83	22307	0.514	ug/L	97
35) Methylcyclohexane	6.72	83	28863	0.685	ug/L #	17
37) 1,2-Dichloropropane	6.72	63	14173	0.546	ug/L #	87
39) cis-1,3-Dichloropropene	7.59	75	3938	0.097	ug/L #	53
47) Tetrachloroethene	8.57	164	11988	0.693	ug/L	95
49) Dibromochloromethane	8.57	129	12127	0.607	ug/L #	11
59) 1,2,3-Trichloropropane	11.82	75	20232	1.191	ug/L	94

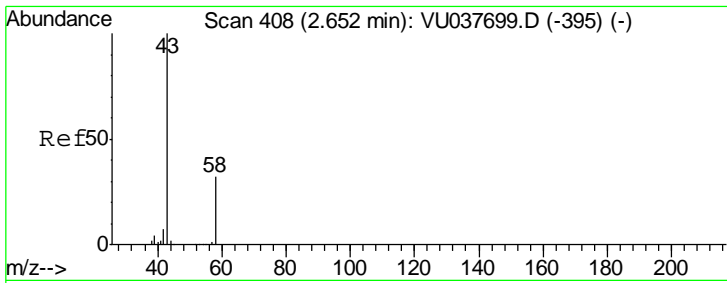
(#) = qualifier out of range (m) = manual integration (+) = signals summed

Data Path : Z:\VOASRV\HPCHEM1\MSVOA U\DATA\VU041420\
 Data File : VU037702.D
 Acq On : 14 Apr 2020 16:59
 Operator : JC/MD
 Sample : L2275-02
 Misc : 25mL/MSVOA U/WATER
 ALS Vial : 1 Sample Multiplier: 1

Instrument :
 MSVOA_U
 Client Sampled :

Quant Time: Apr 15 03:04:33 2020
 Quant Method : Z:\VOASRV\HPCHEM1\MSVOA_U\METHOD\SOMUTR041420WMA.M
 Quant Title : TRACE VOA SOM01.0
 QLast Update : Wed Apr 15 03:02:33 2020
 Response via : Initial Calibration

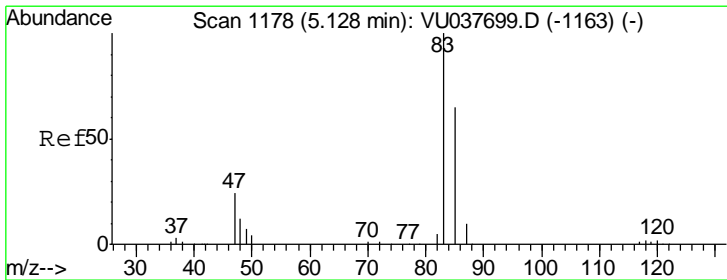
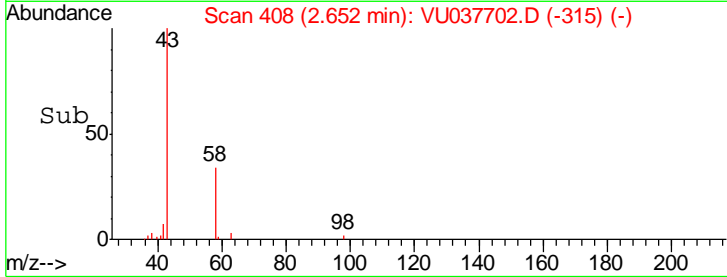
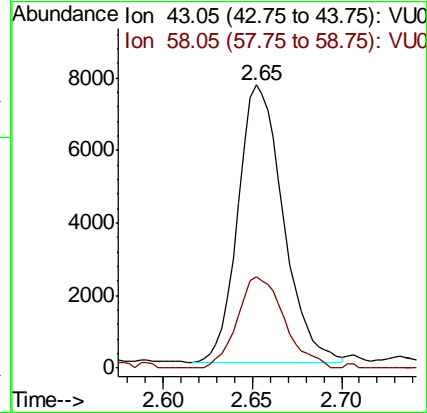
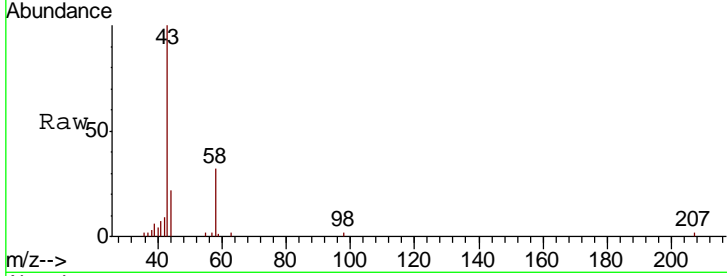




#13
 Acetone
 Concen: 3.138 ug/L
 RT: 2.65 min Scan# 408
 Delta R.T. -0.00 min
 Lab File: VU037702.D
 Acq: 14 Apr 2020 16:59

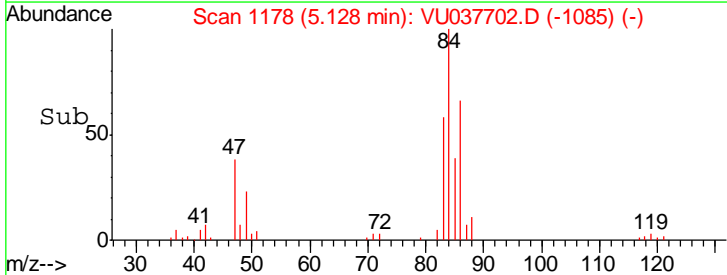
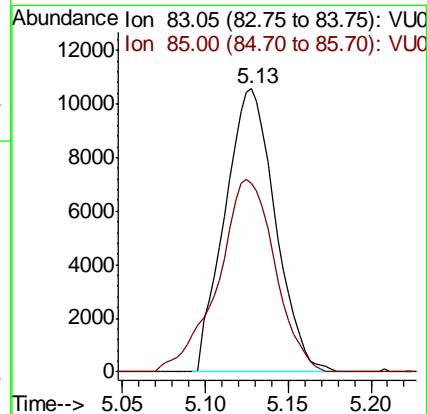
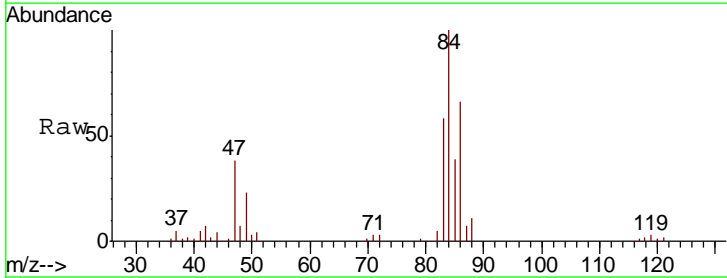
Instrument :
 MSVOA_U
 ClientSampled :

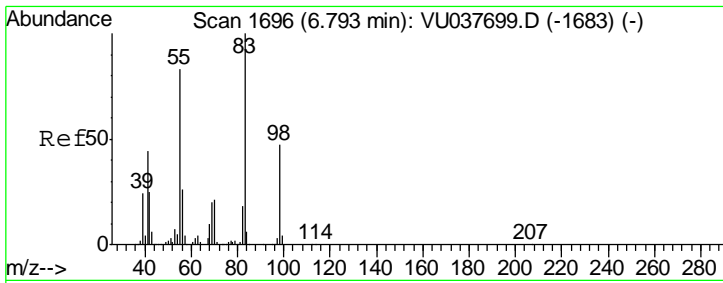
Tgt Ion	Resp	Lower	Upper
43	13574		
58	34.2	0.0	64.8



#25
 Chloroform
 Concen: 0.514 ug/L
 RT: 5.13 min Scan# 1178
 Delta R.T. -0.00 min
 Lab File: VU037702.D
 Acq: 14 Apr 2020 16:59

Tgt Ion	Resp	Lower	Upper
83	22307		
85	66.5	44.9	83.3

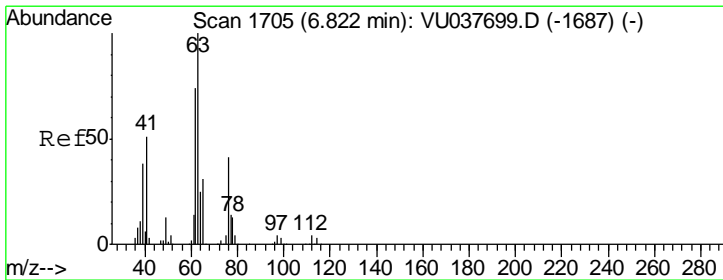
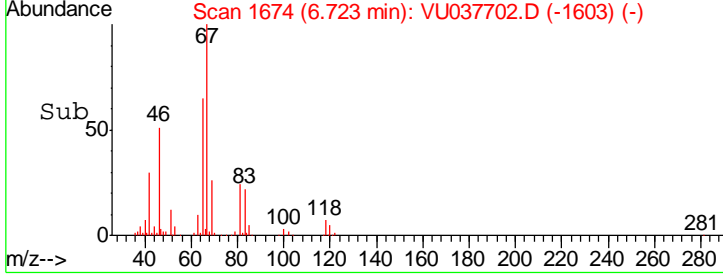
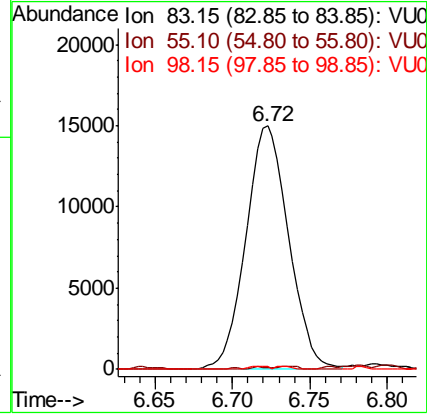
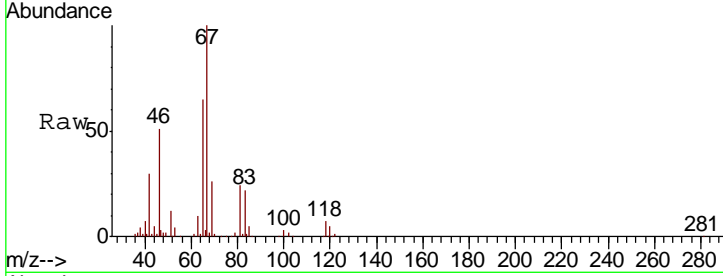




#35
 Methylcyclohexane
 Concen: 0.685 ug/L
 RT: 6.72 min Scan# 1674
 Delta R.T. -0.07 min
 Lab File: VU037702.D
 Acq: 14 Apr 2020 16:59

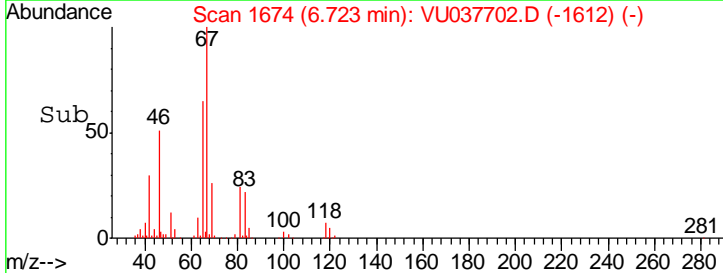
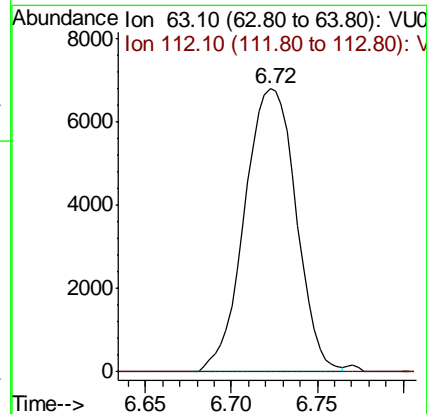
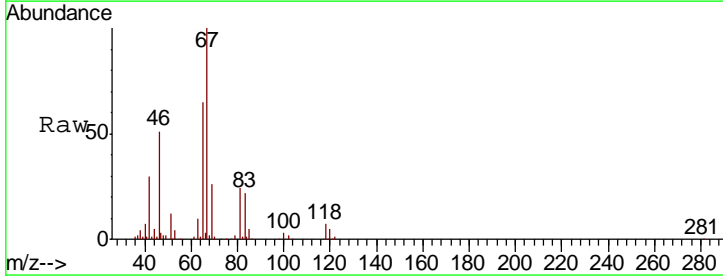
Instrument :
 MSVOA_U
 ClientSampled :

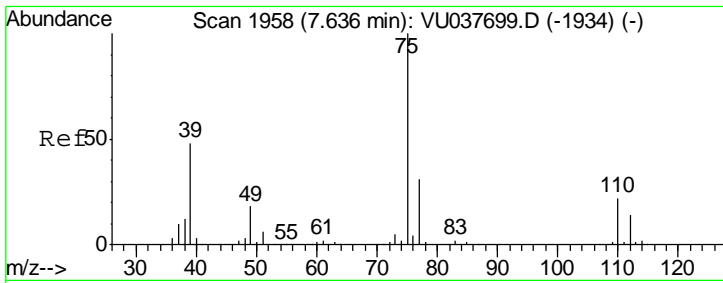
Tgt Ion	Resp	Lower	Upper
83	100		
55	0.4	65.5	98.3#
98	0.6	38.2	57.4#



#37
 1,2-Dichloropropane
 Concen: 0.546 ug/L
 RT: 6.72 min Scan# 1674
 Delta R.T. -0.10 min
 Lab File: VU037702.D
 Acq: 14 Apr 2020 16:59

Tgt Ion	Resp	Lower	Upper
63	100		
112	0.0	3.4	5.0#

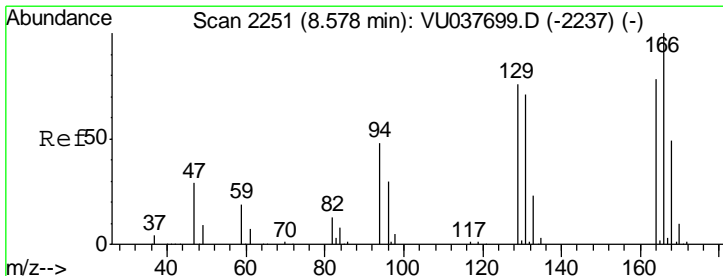
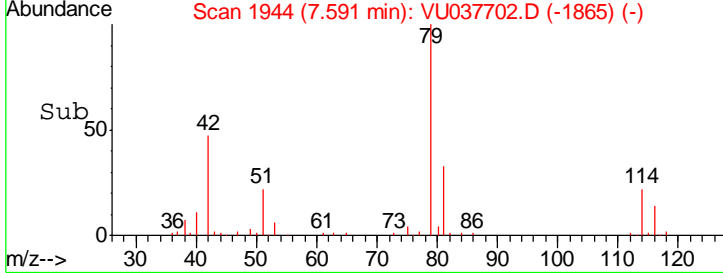
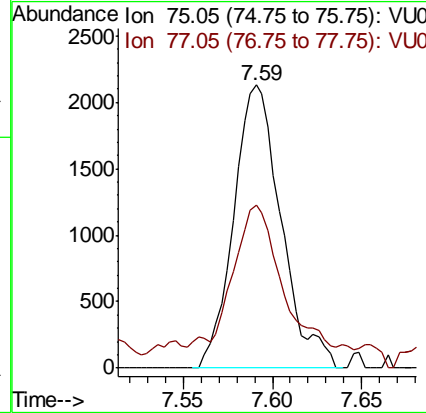
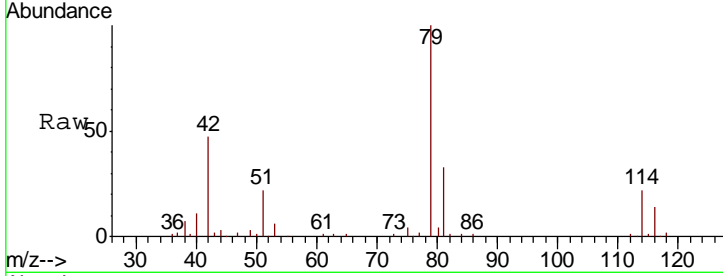




#39
 cis-1,3-Dichloropropene
 Concen: 0.097 ug/L
 RT: 7.59 min Scan# 1944
 Delta R.T. -0.05 min
 Lab File: VU037702.D
 Acq: 14 Apr 2020 16:59

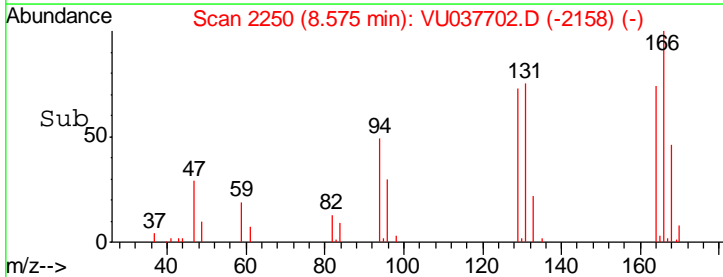
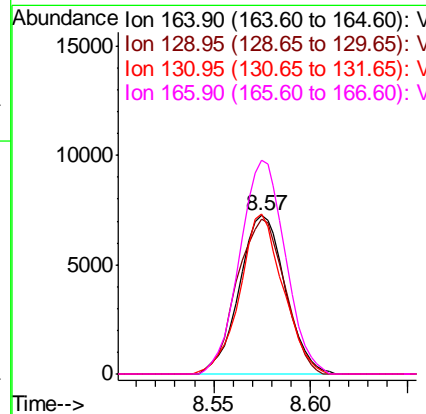
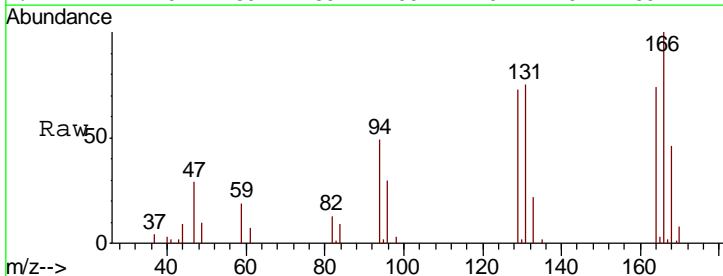
Instrument : MSVOA_U
 ClientSampled :

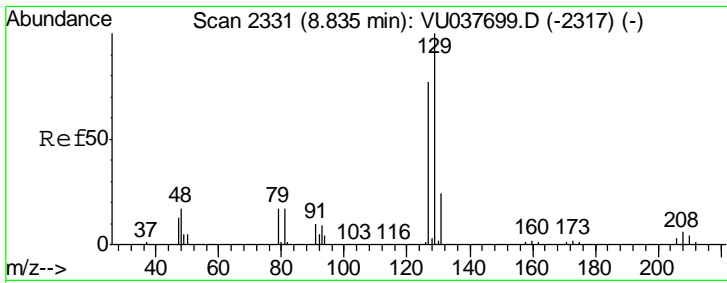
Tgt Ion	Resp	Lower	Upper
75	3938		
77	57.6	22.2	41.2#



#47
 Tetrachloroethene
 Concen: 0.693 ug/L
 RT: 8.57 min Scan# 2250
 Delta R.T. -0.00 min
 Lab File: VU037702.D
 Acq: 14 Apr 2020 16:59

Tgt Ion	Resp	Lower	Upper
164	11988		
166	100		
129	97.8	68.1	126.5
131	101.3	65.9	122.5
166	134.7	89.7	166.7

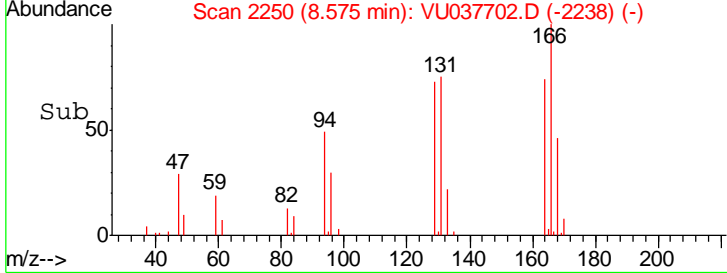
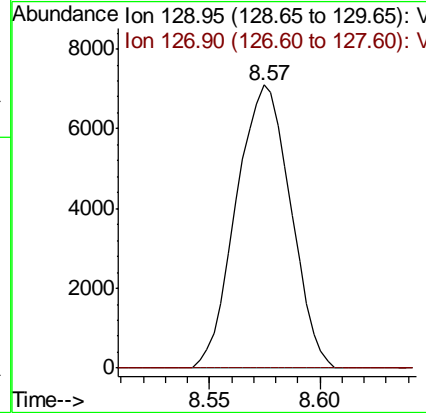
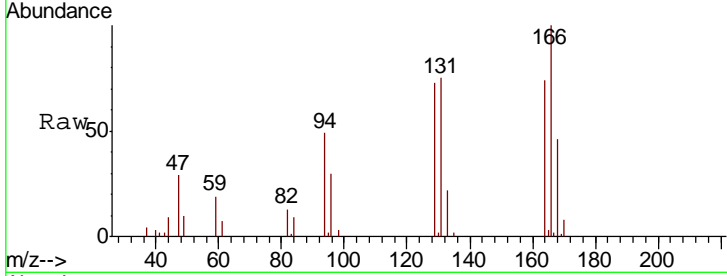




#49
 Dibromochloromethane
 Concen: 0.607 ug/L
 RT: 8.57 min Scan# 2250
 Delta R.T. -0.26 min
 Lab File: VU037702.D
 Acq: 14 Apr 2020 16:59

Instrument :
 MSVOA_U
 ClientSampled :

Tgt Ion	Resp	Lower	Upper
129	12127		
127	0.0	53.3	98.9#



#59
 1,2,3-Trichloropropane
 Concen: 1.191 ug/L
 RT: 11.82 min Scan# 3260
 Delta R.T. 0.98 min
 Lab File: VU037702.D
 Acq: 14 Apr 2020 16:59

Tgt Ion	Resp	Lower	Upper
75	20232		
77	35.3	25.4	38.2

