

Data Path : Z:\VOASRV\HPCHEM1\MSVOA U\DATA\VU041420\
 Data File : VU037715.D
 Acq On : 14 Apr 2020 22:20
 Operator : JC/MD
 Sample : L2275-15
 Misc : 25mL/MSVOA U/WATER
 ALS Vial : 1 Sample Multiplier: 1

Instrument :
 MSVOA_U
 ClientSampleId :

Quant Time: Apr 15 03:06:14 2020
 Quant Method : Z:\VOASRV\HPCHEM1\MSVOA_U\METHOD\SOMUTR041420WMA.M
 Quant Title : TRACE VOA SOM01.0
 QLast Update : Wed Apr 15 03:02:33 2020
 Response via : Initial Calibration

Internal Standards	R.T.	QIon	Response	Conc	Units	Dev(Min)
1) 1,4-Difluorobenzene	6.28	114	285505	5.00	ug/L	0.00
28) Chlorobenzene-d5	9.44	117	270292	5.00	ug/L	0.00
60) 1,4-Dichlorobenzene-d4	11.83	152	127582	5.00	ug/L	0.00

System Monitoring Compounds

4) Vinyl Chloride-d3	1.61	65	101345	4.69	ug/L	0.00
Spiked Amount	5.000	Range	40 - 130	Recovery	=	93.80%
7) Chloroethane-d5	1.93	69	86331	4.74	ug/L	0.00
Spiked Amount	5.000	Range	65 - 130	Recovery	=	94.80%
11) 1,1-Dichloroethene-d2	2.59	63	135923	3.54	ug/L	0.00
Spiked Amount	5.000	Range	60 - 125	Recovery	=	70.80%
20) 2-Butanone-d5	4.66	46	291608	49.15	ug/L	0.00
Spiked Amount	50.000	Range	40 - 130	Recovery	=	98.30%
24) Chloroform-d	5.10	84	158027	4.58	ug/L	0.00
Spiked Amount	5.000	Range	70 - 125	Recovery	=	91.60%
26) 1,2-Dichloroethane-d4	5.74	65	95897	4.84	ug/L	0.00
Spiked Amount	5.000	Range	70 - 130	Recovery	=	96.80%
32) Benzene-d6	5.76	84	359943	4.91	ug/L	0.00
Spiked Amount	5.000	Range	70 - 125	Recovery	=	98.20%
36) 1,2-Dichloropropane-d6	6.72	67	118105	4.97	ug/L	0.00
Spiked Amount	5.000	Range	60 - 140	Recovery	=	99.40%
41) Toluene-d8	7.92	98	319495	4.82	ug/L	0.00
Spiked Amount	5.000	Range	70 - 130	Recovery	=	96.40%
43) trans-1,3-Dichloropropene-	8.20	79	48536	4.54	ug/L	0.00
Spiked Amount	5.000	Range	55 - 130	Recovery	=	90.80%
46) 2-Hexanone-d5	8.66	63	263767	48.27	ug/L	0.00
Spiked Amount	50.000	Range	45 - 130	Recovery	=	96.54%
57) 1,1,2,2-Tetrachloroethane-	10.77	84	87892	4.69	ug/L	0.00
Spiked Amount	5.000	Range	65 - 120	Recovery	=	93.80%
64) 1,2-Dichlorobenzene-d4	12.20	152	114170	5.02	ug/L	0.00
Spiked Amount	5.000	Range	80 - 120	Recovery	=	100.40%

Target Compounds

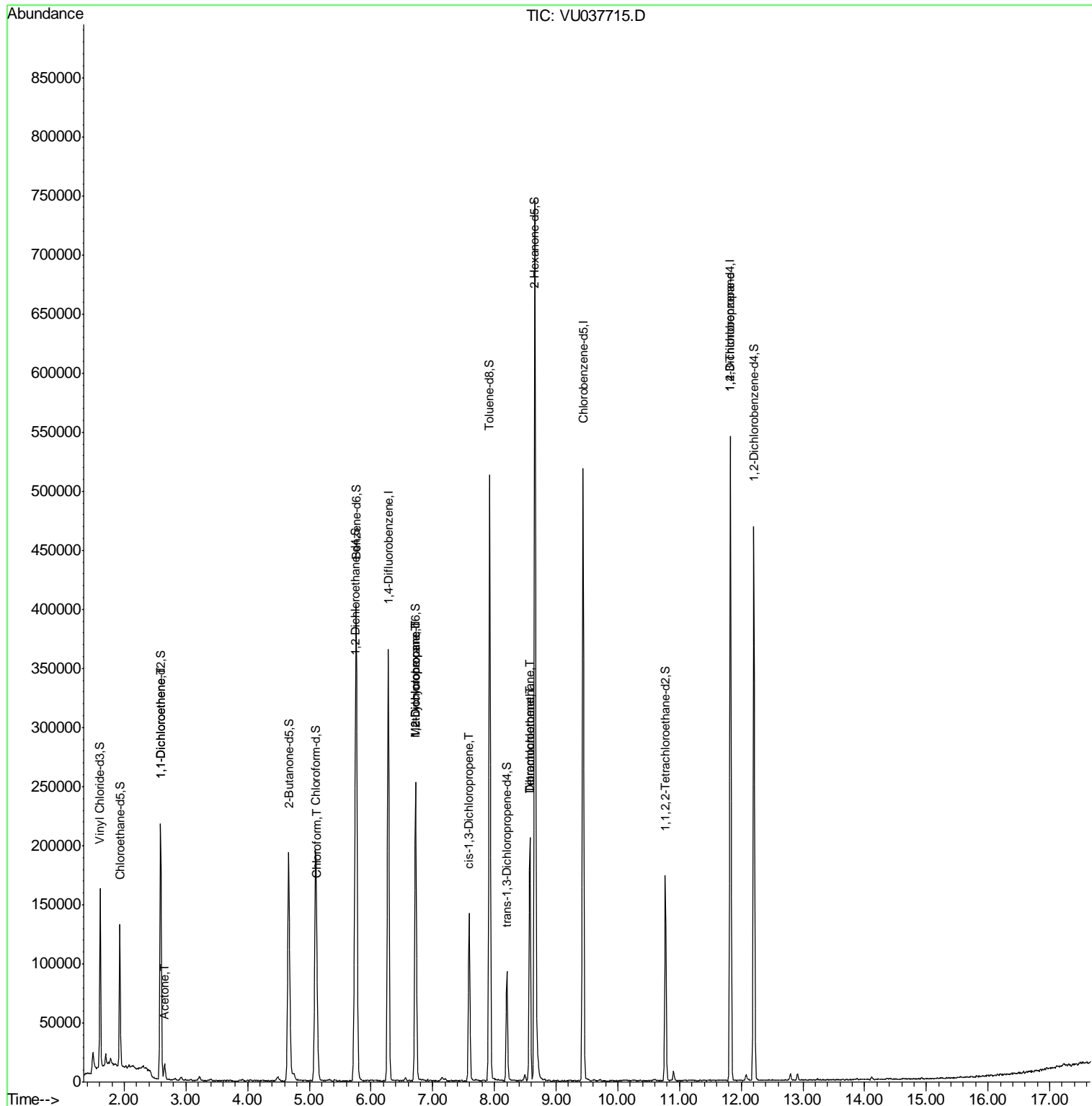
Target Compounds	R.T.	QIon	Response	Conc	Units	Ovalue
12) 1,1-Dichloroethene	2.59	96	1343	0.068	ug/L #	1
13) Acetone	2.65	43	15185	3.882	ug/L	96
25) Chloroform	5.13	83	39046	0.995	ug/L	96
35) Methylcyclohexane	6.72	83	26415	0.687	ug/L #	17
37) 1,2-Dichloropropane	6.72	63	12546	0.530	ug/L #	87
39) cis-1,3-Dichloropropene	7.59	75	3013	0.081	ug/L #	48
47) Tetrachloroethene	8.57	164	42418	2.690	ug/L	96
49) Dibromochloromethane	8.57	129	41523	2.276	ug/L #	11
59) 1,2,3-Trichloropropane	11.83	75	17322	1.117	ug/L #	87

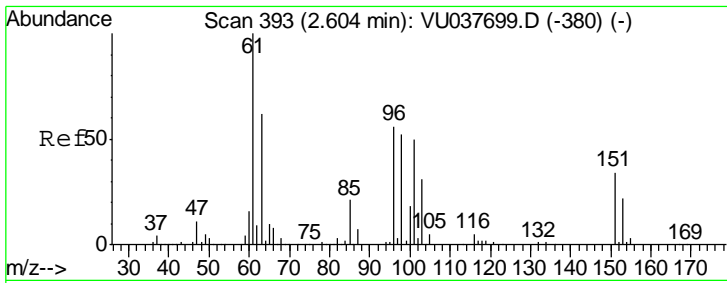
(#) = qualifier out of range (m) = manual integration (+) = signals summed

Data Path : Z:\VOASRV\HPCHEM1\MSVOA U\DATA\VU041420\
 Data File : VU037715.D
 Acq On : 14 Apr 2020 22:20
 Operator : JC/MD
 Sample : L2275-15
 Misc : 25mL/MSVOA U/WATER
 ALS Vial : 1 Sample Multiplier: 1

Instrument :
 MSVOA_U
 Client Sampled :

Quant Time: Apr 15 03:06:14 2020
 Quant Method : Z:\VOASRV\HPCHEM1\MSVOA_U\METHOD\SOMUTR041420WMA.M
 Quant Title : TRACE VOA SOM01.0
 QLast Update : Wed Apr 15 03:02:33 2020
 Response via : Initial Calibration

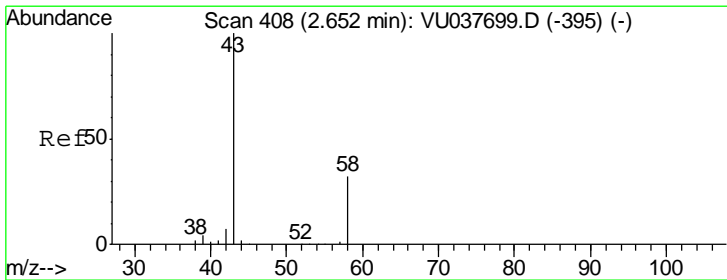
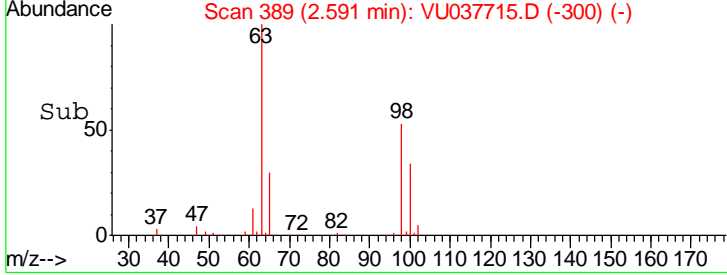
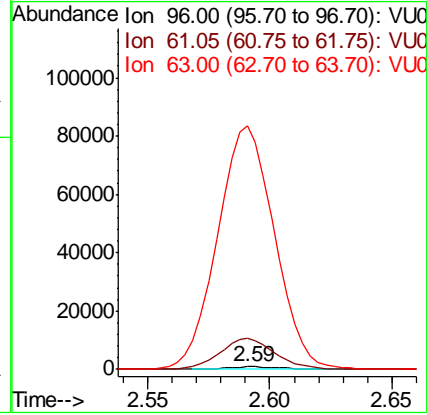
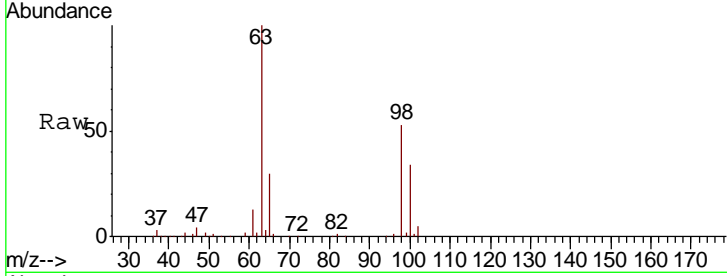




#12
 1,1-Dichloroethene
 Concen: 0.068 ug/L
 RT: 2.59 min Scan# 389
 Delta R.T. -0.01 min
 Lab File: VU037715.D
 Acq: 14 Apr 2020 22:20

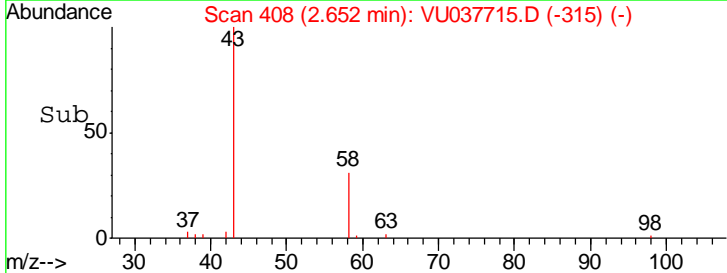
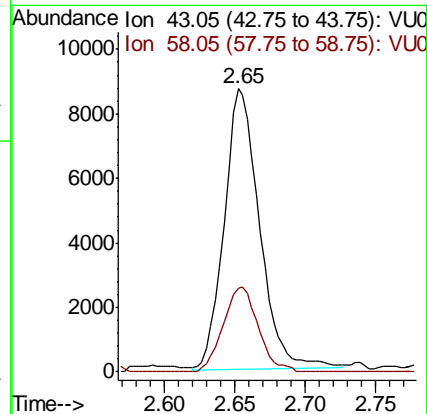
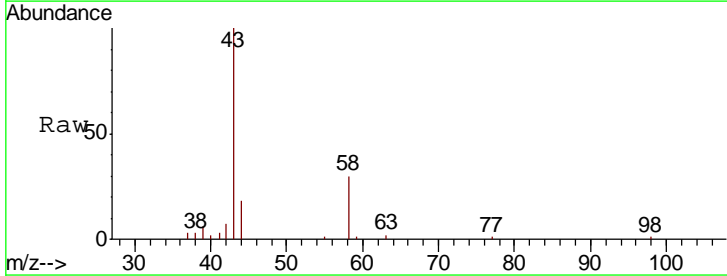
Instrument : MSVOA_U
 ClientSampled :

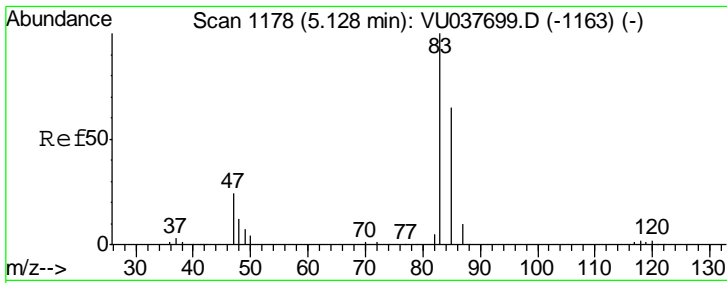
Tgt Ion	Resp	Lower	Upper
96	1343		
61	1214.1	127.7	237.3#
63	9621.2	85.0	157.8#



#13
 Acetone
 Concen: 3.882 ug/L
 RT: 2.65 min Scan# 408
 Delta R.T. 0.00 min
 Lab File: VU037715.D
 Acq: 14 Apr 2020 22:20

Tgt Ion	Resp	Lower	Upper
43	15185		
58	29.9	0.0	64.8

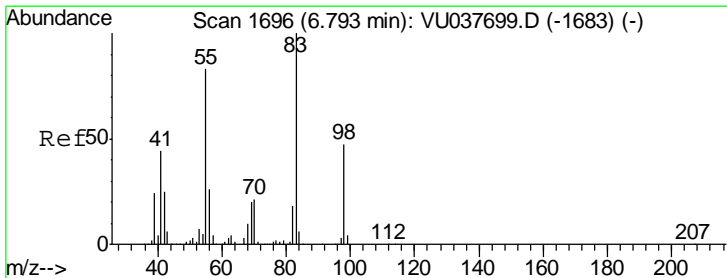
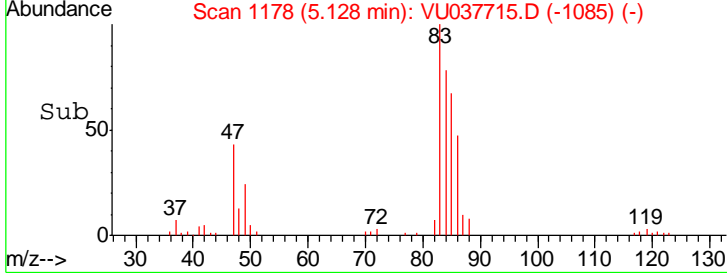
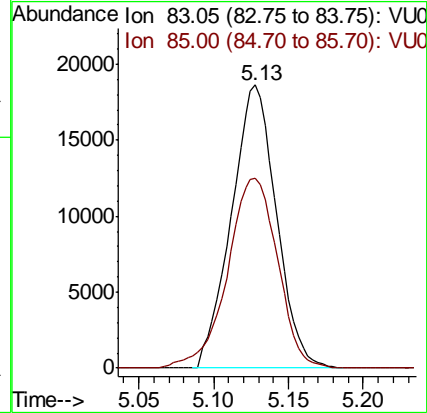
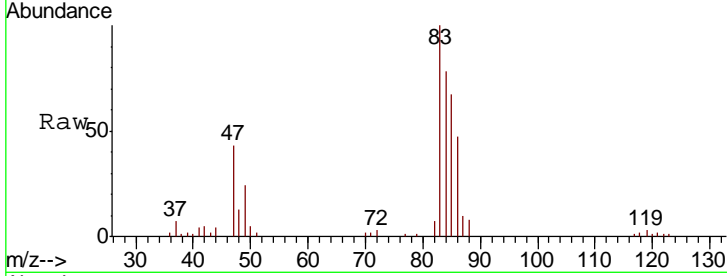




#25
 Chloroform
 Concen: 0.995 ug/L
 RT: 5.13 min Scan# 1178
 Delta R.T. 0.00 min
 Lab File: VU037715.D
 Acq: 14 Apr 2020 22:20

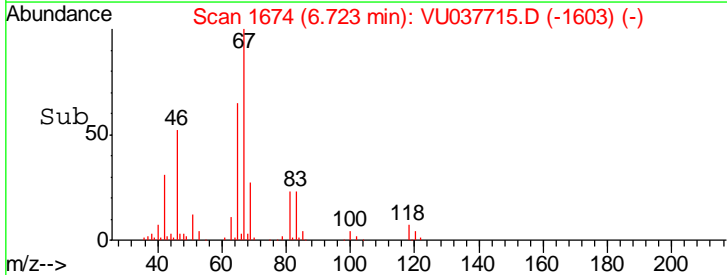
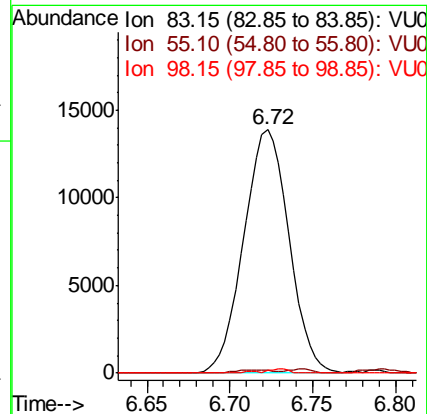
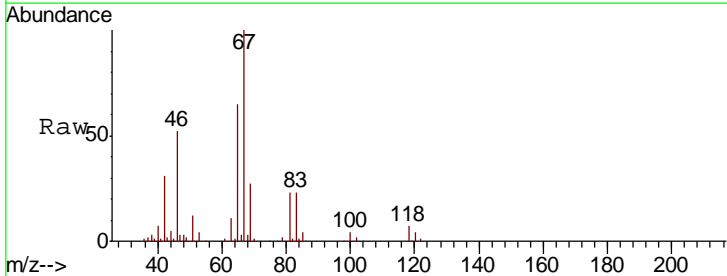
Instrument :
 MSVOA_U
 ClientSampled :

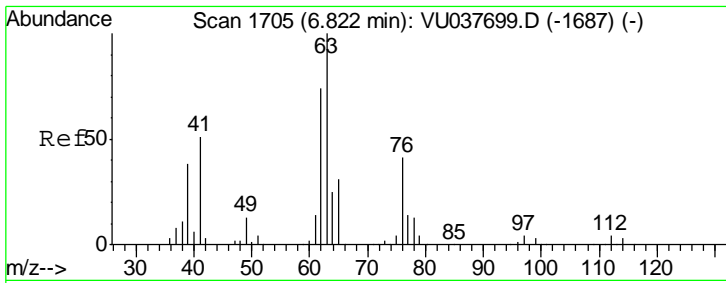
Tgt Ion	Resp	Lower	Upper
83	39046		
85	67.2	44.9	83.3



#35
 Methylcyclohexane
 Concen: 0.687 ug/L
 RT: 6.72 min Scan# 1674
 Delta R.T. -0.07 min
 Lab File: VU037715.D
 Acq: 14 Apr 2020 22:20

Tgt Ion	Resp	Lower	Upper
83	26415		
55	1.1	65.5	98.3#
98	0.7	38.2	57.4#

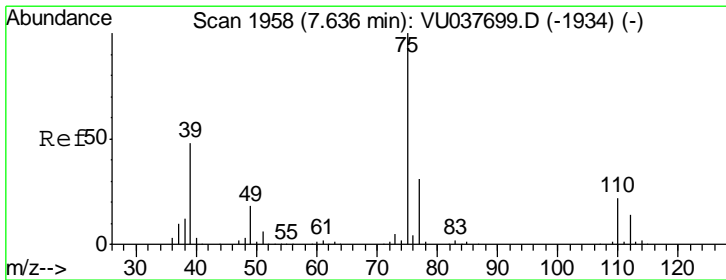
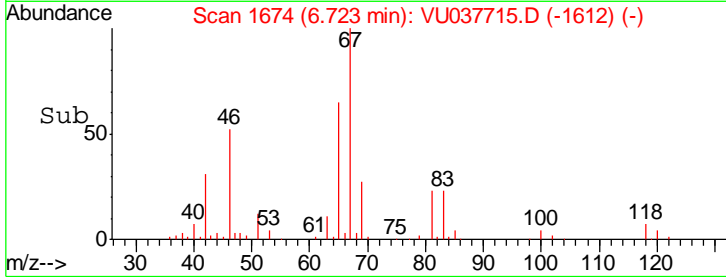
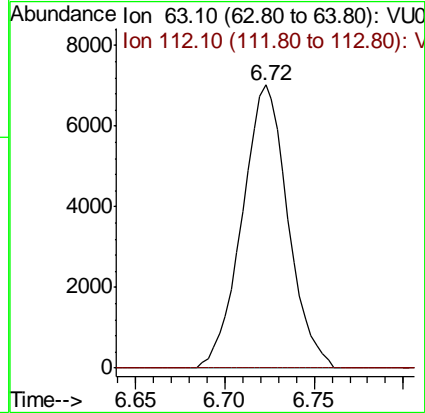
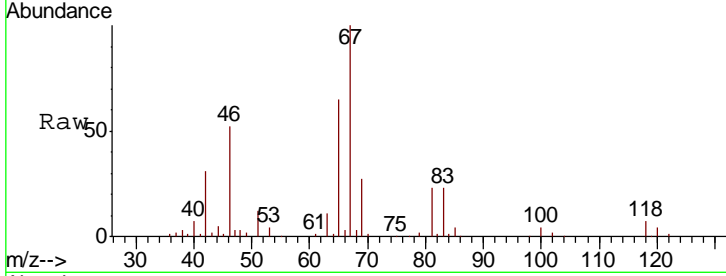




#37
 1,2-Dichloropropane
 Concen: 0.530 ug/L
 RT: 6.72 min Scan# 1674
 Delta R.T. -0.10 min
 Lab File: VU037715.D
 Acq: 14 Apr 2020 22:20

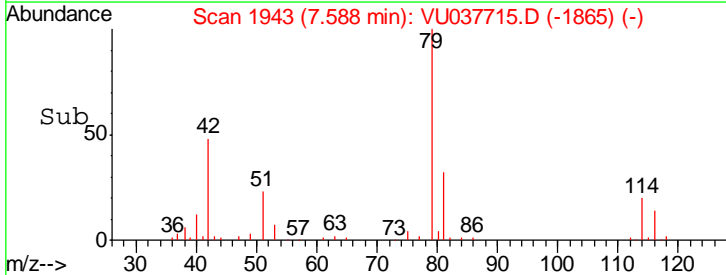
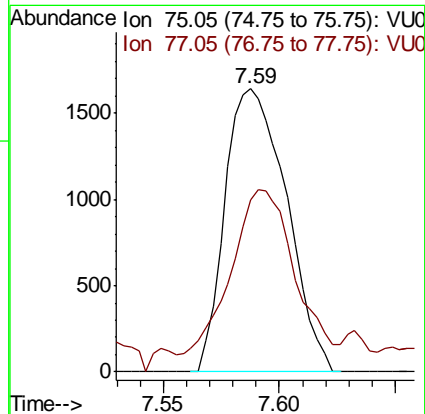
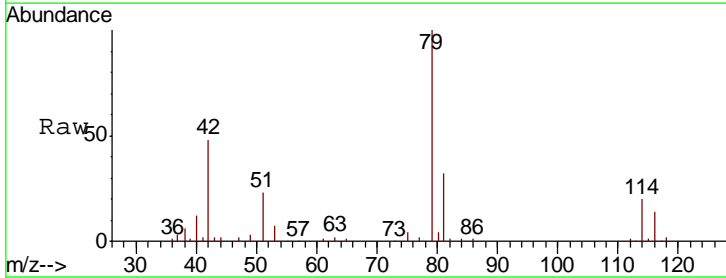
Instrument :
 MSVOA_U
 ClientSampled :

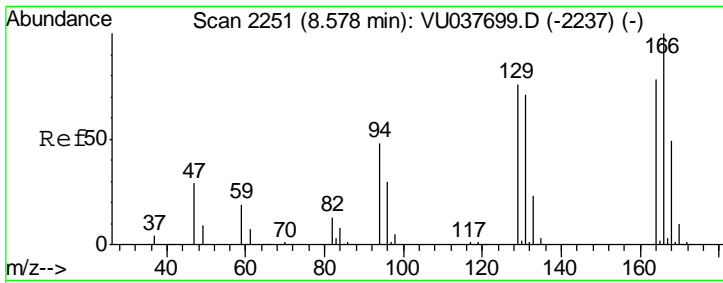
Tgt Ion: 63 Resp: 12546
 Ion Ratio Lower Upper
 63 100
 112 0.0 3.4 5.0#



#39
 cis-1,3-Dichloropropene
 Concen: 0.081 ug/L
 RT: 7.59 min Scan# 1943
 Delta R.T. -0.05 min
 Lab File: VU037715.D
 Acq: 14 Apr 2020 22:20

Tgt Ion: 75 Resp: 3013
 Ion Ratio Lower Upper
 75 100
 77 60.8 22.2 41.2#



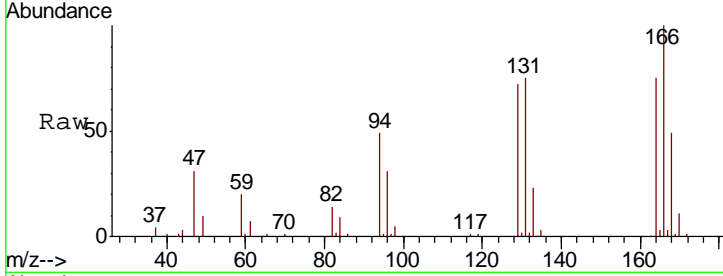


#47

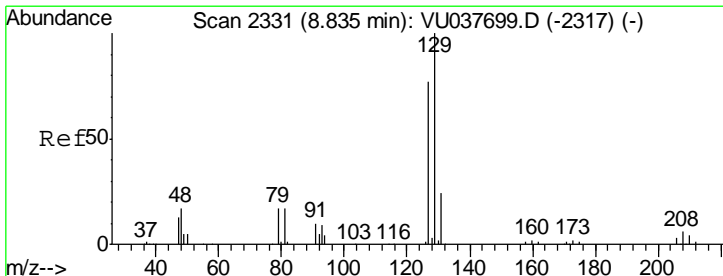
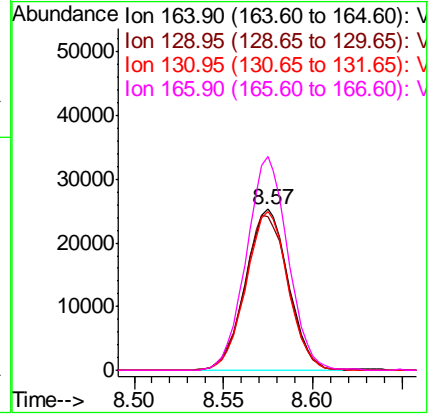
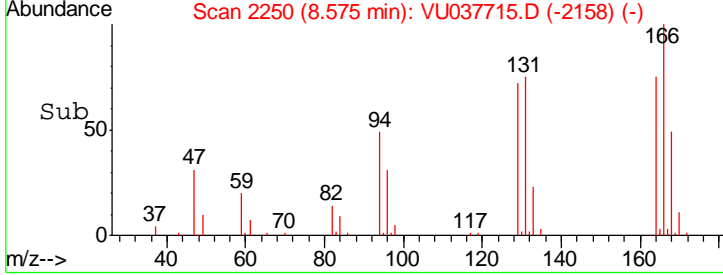
Tetrachloroethene
 Concen: 2.690 ug/L
 RT: 8.57 min Scan# 2250
 Delta R.T. -0.00 min
 Lab File: VU037715.D
 Acq: 14 Apr 2020 22:20

Instrument :
 MSVOA_U
 ClientSampled :

Tgt Ion	Resp	Lower	Upper
164	100		
129	95.1	68.1	126.5
131	98.8	65.9	122.5
166	132.6	89.7	166.7



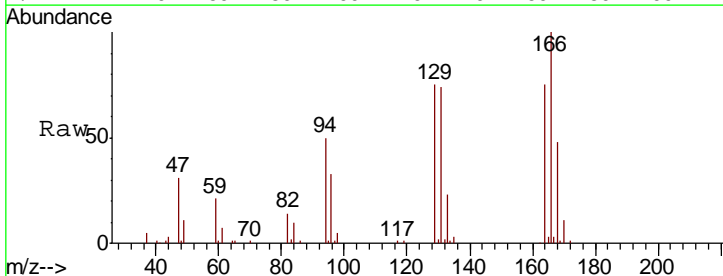
Abundance Ion 163.90 (163.60 to 164.60): V
 Ion 128.95 (128.65 to 129.65): V
 Ion 130.95 (130.65 to 131.65): V
 Ion 165.90 (165.60 to 166.60): V



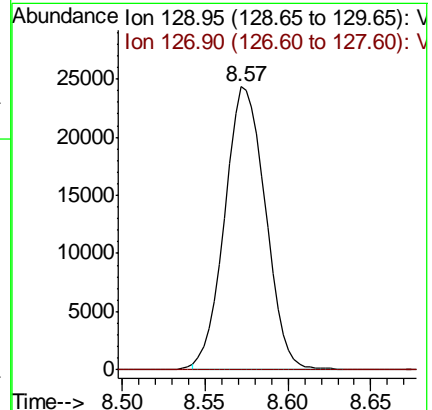
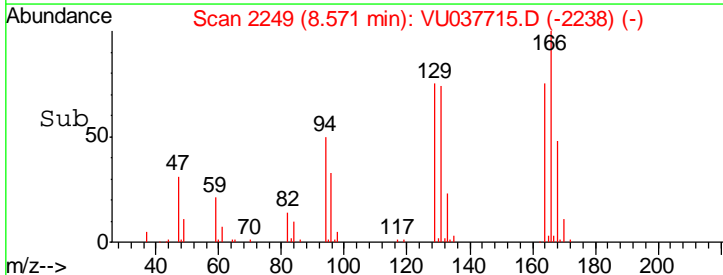
#49

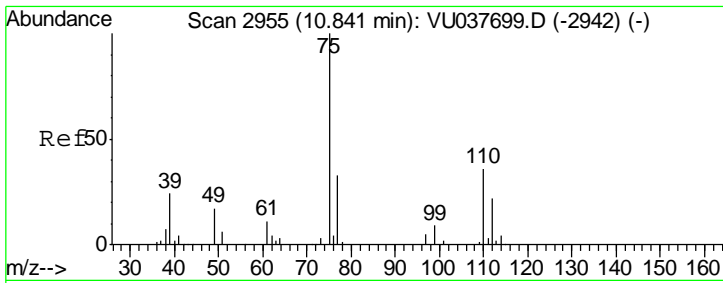
Dibromochloromethane
 Concen: 2.276 ug/L
 RT: 8.57 min Scan# 2249
 Delta R.T. -0.26 min
 Lab File: VU037715.D
 Acq: 14 Apr 2020 22:20

Tgt Ion	Resp	Lower	Upper
129	100		
127	0.0	53.3	98.9#



Abundance Ion 128.95 (128.65 to 129.65): V
 Ion 126.90 (126.60 to 127.60): V





#59
 1,2,3-Trichloropropane
 Concen: 1.117 ug/L
 RT: 11.83 min Scan# 3261
 Delta R.T. 0.98 min
 Lab File: VU037715.D
 Acq: 14 Apr 2020 22:20

Instrument : MSVOA_U
 ClientSampled :

Tot Ion	Resp	Lower	Upper
75	17322		
75	100		
77	38.9	25.4	38.2#

