

Data Path : Z:\VOASRV\HPCHEM1\MSVOA U\DATA\VU041620\  
 Data File : VU037750.D  
 Acq On : 16 Apr 2020 13:25  
 Operator : JC/MD  
 Sample : L2296-06  
 Misc : 25mL/MSVOA U/WATER  
 ALS Vial : 1 Sample Multiplier: 1

**Instrument :**  
 MSVOA\_U  
**Client Sampled :**  
 BFS92

**Manual Integrations**  
**APPROVED**  
 MMDadoda  
 4/17/2020 2:54:20 PM

Quant Time: Apr 17 03:15:05 2020  
 Quant Method : Z:\VOASRV\HPCHEM1\MSVOA\_U\METHOD\SOMUTR041420WMA.M  
 Quant Title : TRACE VOA SOM01.0  
 QLast Update : Fri Apr 17 01:29:02 2020  
 Response via : Initial Calibration

Internal Standards	R.T.	QIon	Response	Conc	Units	Dev(Min)
1) 1,4-Difluorobenzene	6.28	114	279727	5.00	ug/L	0.00
28) Chlorobenzene-d5	9.44	117	272284	5.00	ug/L	0.00
60) 1,4-Dichlorobenzene-d4	11.83	152	136059	5.00	ug/L	0.00

System Monitoring Compounds

4) Vinyl Chloride-d3	1.61	65	93956	4.44	ug/L	0.00
Spiked Amount	5.000	Range	40 - 130	Recovery	=	88.80%
7) Chloroethane-d5	1.93	69	80002	4.48	ug/L	0.00
Spiked Amount	5.000	Range	65 - 130	Recovery	=	89.60%
11) 1,1-Dichloroethene-d2	2.59	63	124446	3.31	ug/L	0.00
Spiked Amount	5.000	Range	60 - 125	Recovery	=	66.20%
20) 2-Butanone-d5	4.66	46	286733	49.32	ug/L	-0.01
Spiked Amount	50.000	Range	40 - 130	Recovery	=	98.64%
24) Chloroform-d	5.10	84	154072	4.56	ug/L	0.00
Spiked Amount	5.000	Range	70 - 125	Recovery	=	91.20%
26) 1,2-Dichloroethane-d4	5.74	65	93241	4.80	ug/L	0.00
Spiked Amount	5.000	Range	70 - 130	Recovery	=	96.00%
32) Benzene-d6	5.76	84	336428	4.56	ug/L	0.00
Spiked Amount	5.000	Range	70 - 125	Recovery	=	91.20%
36) 1,2-Dichloropropane-d6	6.72	67	110881	4.63	ug/L	0.00
Spiked Amount	5.000	Range	60 - 140	Recovery	=	92.60%
41) Toluene-d8	7.92	98	306932	4.60	ug/L	0.00
Spiked Amount	5.000	Range	70 - 130	Recovery	=	92.00%
43) trans-1,3-Dichloropropene-	8.20	79	48266	4.49	ug/L	0.00
Spiked Amount	5.000	Range	55 - 130	Recovery	=	89.80%
46) 2-Hexanone-d5	8.66	63	258510	46.96	ug/L	0.00
Spiked Amount	50.000	Range	45 - 130	Recovery	=	93.92%
57) 1,1,2,2-Tetrachloroethane-	10.77	84	87420	4.63	ug/L	0.00
Spiked Amount	5.000	Range	65 - 120	Recovery	=	92.60%
64) 1,2-Dichlorobenzene-d4	12.21	152	112578	4.64	ug/L	0.00
Spiked Amount	5.000	Range	80 - 120	Recovery	=	92.80%

Target Compounds

Target Compounds	R.T.	QIon	Response	Conc	Units	Ovalue
5) Vinyl chloride	1.62	62	48091	1.632	ug/L	96
12) 1,1-Dichloroethene	2.60	96	7393	0.383	ug/L #	1
13) Acetone	2.65	43	3195	0.834	ug/L	96
18) trans-1,2-Dichloroethene	3.39	96	5497	0.263	ug/L	94
19) 1,1-Dichloroethane	3.91	63	136788	3.379	ug/L	98
22) cis-1,2-Dichloroethene	4.71	96	190114	8.408	ug/L	95
25) Chloroform	5.13	83	80680	2.098	ug/L	95
27) 1,2-Dichloroethane	5.83	62	14158	0.545	ug/L	96
29) 1,1,1-Trichloroethane	5.35	97	46314	1.402	ug/L	97
30) Cyclohexane	5.42	56	9734	0.238	ug/L	97
33) Benzene	5.81	78	32827m	0.365	ug/L	
34) Trichloroethene	6.57	95	8845	0.400	ug/L	90
45) 1,1,2-Trichloroethane	8.43	97	5822	0.362	ug/L	94
51) Chlorobenzene	9.47	112	57676	1.003	ug/L	99
54) o-Xylene	10.12	106	5797	0.148	ug/L	100
62) 1,3-Dichlorobenzene	11.76	146	7774	0.171	ug/L	91
63) 1,4-Dichlorobenzene	11.85	146	10259	0.224	ug/L	99

Data Path : Z:\VOASRV\HPCHEM1\MSVOA U\DATA\VU041620\  
 Data File : VU037750.D  
 Acq On : 16 Apr 2020 13:25  
 Operator : JC/MD  
 Sample : L2296-06  
 Misc : 25mL/MSVOA U/WATER  
 ALS Vial : 1 Sample Multiplier: 1

**Instrument :**  
 MSVOA\_U  
**ClientSampleId :**  
 BFS92

**Manual Integrations**  
**APPROVED**  
 MMDadoda  
 4/17/2020 2:54:20 PM

Quant Time: Apr 17 03:15:05 2020  
 Quant Method : Z:\VOASRV\HPCHEM1\MSVOA\_U\METHOD\SOMUTR041420WMA.M  
 Quant Title : TRACE VOA SOM01.0  
 QLast Update : Fri Apr 17 01:29:02 2020  
 Response via : Initial Calibration

Internal Standards	R.T.	QIon	Response	Conc	Units	Dev(Min)
65) 1,2-Dichlorobenzene	12.23	146	4471	0.104	ug/L	98
68) 1,2,4-trichlorobenzene	13.87	180	6148	0.200	ug/L	96
70) 1,2,3-Trichlorobenzene	14.36	180	4394	0.161	ug/L	94

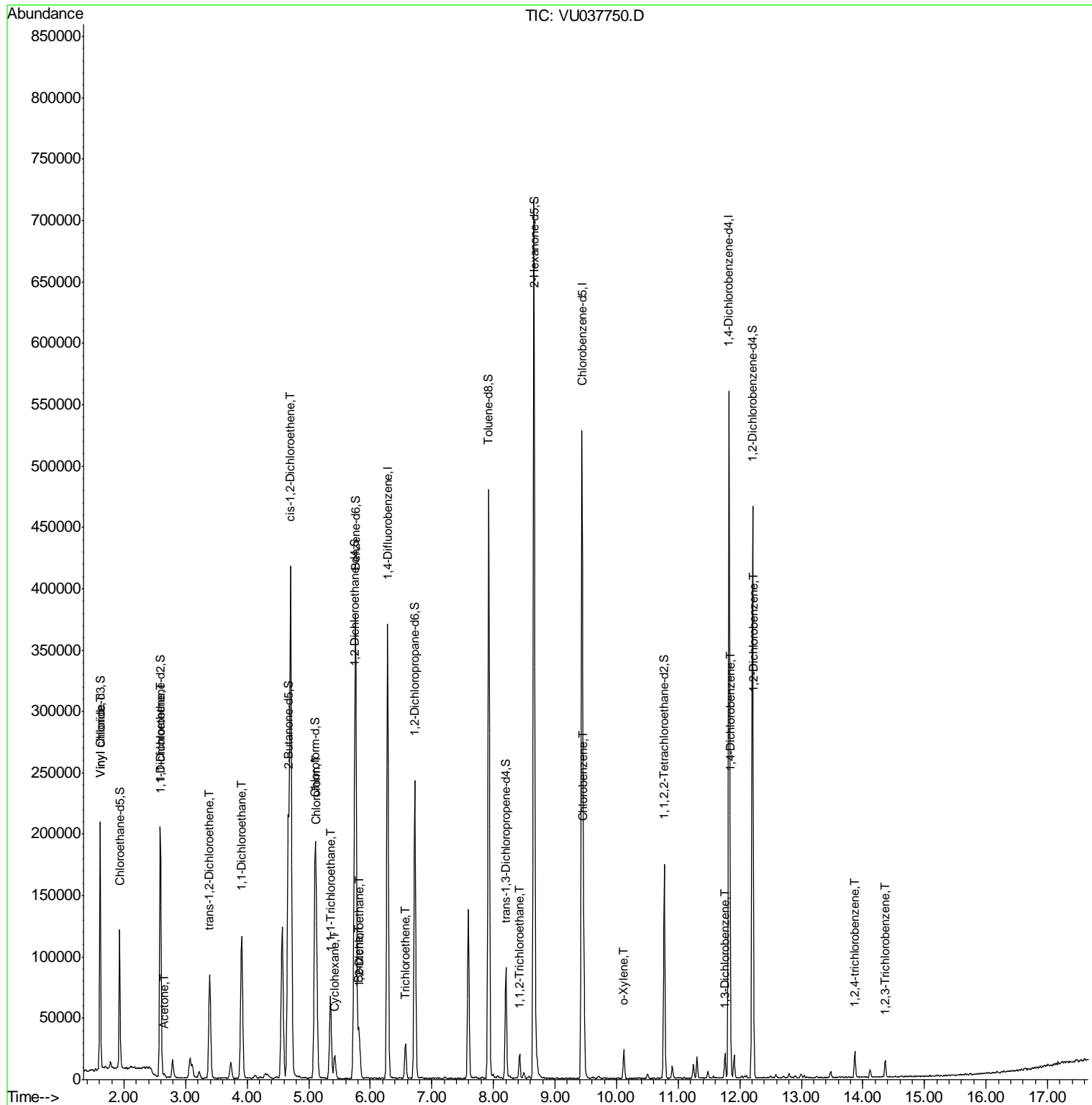
(#) = qualifier out of range (m) = manual integration (+) = signals summed

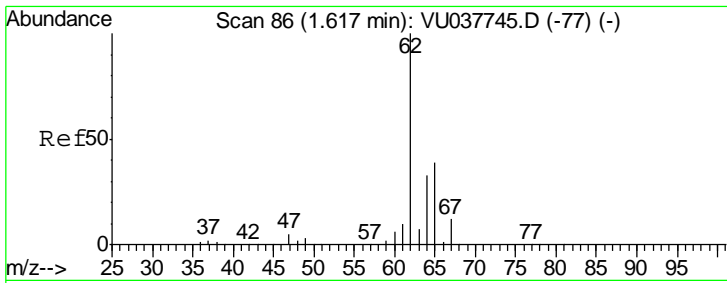
Data Path : Z:\VOASRV\HPCHEM1\MSVOA U\DATA\VU041620\  
 Data File : VU037750.D  
 Acq On : 16 Apr 2020 13:25  
 Operator : JC/MD  
 Sample : L2296-06  
 Misc : 25mL/MSVOA U/WATER  
 ALS Vial : 1 Sample Multiplier: 1

Instrument :  
 MSVOA\_U  
 Client Sampled :  
 BFS92

Manual Integrations  
**APPROVED**  
 MMDadoda  
 4/17/2020 2:54:20 PM

Quant Time: Apr 17 03:15:05 2020  
 Quant Method : Z:\VOASRV\HPCHEM1\MSVOA\_U\METHOD\SOMUTR041420WMA.M  
 Quant Title : TRACE VOA SOM01.0  
 QLast Update : Fri Apr 17 01:29:02 2020  
 Response via : Initial Calibration





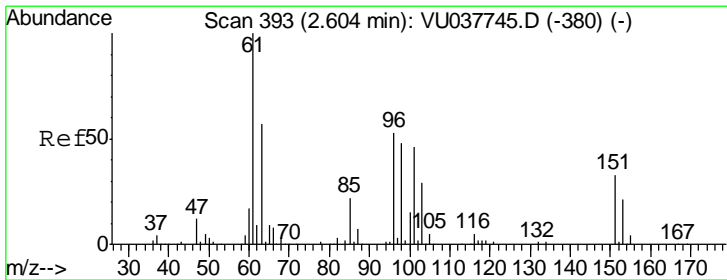
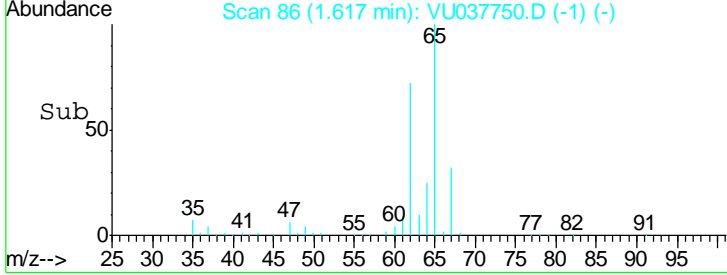
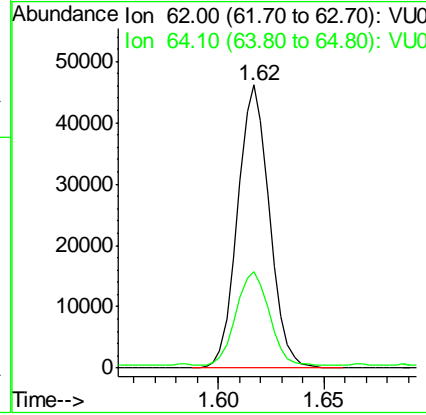
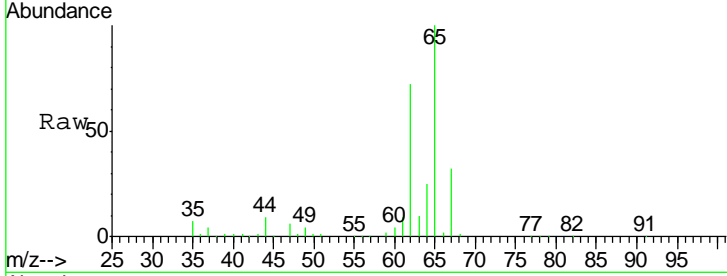
#5  
 Vinyl chloride  
 Concen: 1.632 ug/L  
 RT: 1.62 min Scan# 86  
 Delta R.T. 0.00 min  
 Lab File: VU037750.D  
 Acq: 16 Apr 2020 13:25

**Instrument :**  
 MSVOA\_U  
**ClientSampled :**  
 BFS92

Tgt Ion	Resp	Lower	Upper
62	100		
64	34.1	22.1	41.1

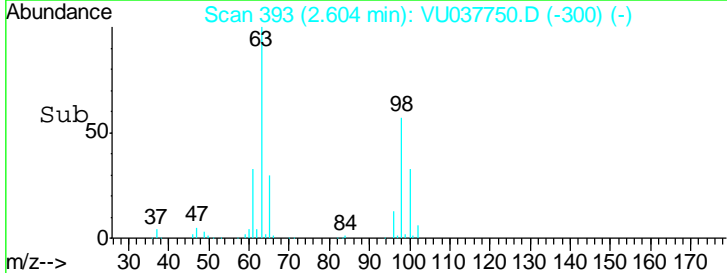
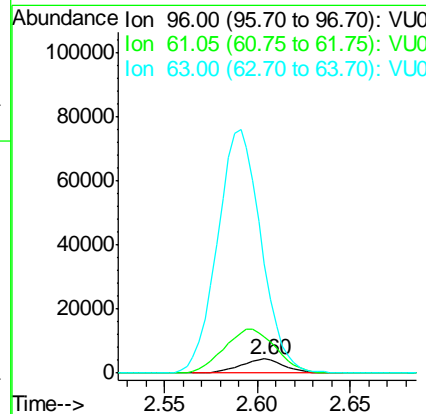
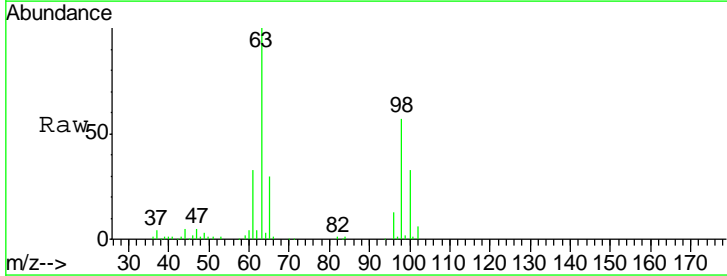
**Manual Integrations**  
**APPROVED**

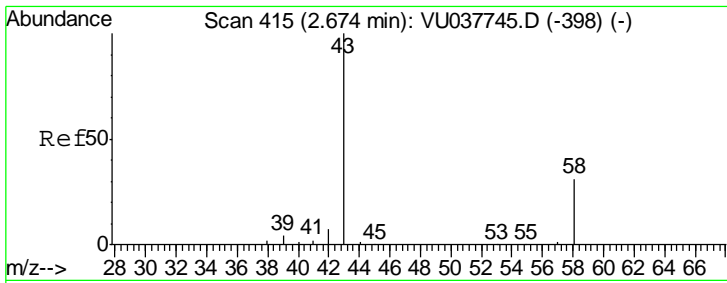
MMDadoda  
 4/17/2020 2:54:20 PM



#12  
 1,1-Dichloroethene  
 Concen: 0.383 ug/L  
 RT: 2.60 min Scan# 393  
 Delta R.T. 0.00 min  
 Lab File: VU037750.D  
 Acq: 16 Apr 2020 13:25

Tgt Ion	Resp	Lower	Upper
96	100		
61	258.9	127.7	237.3#
63	784.0	85.0	157.8#





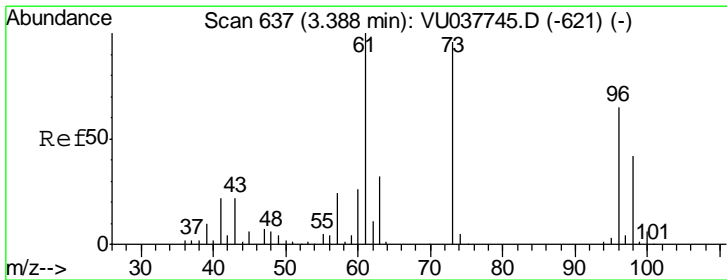
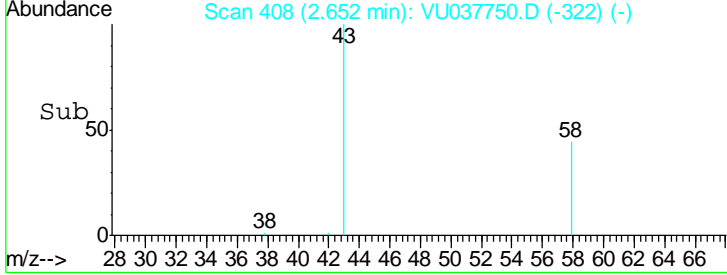
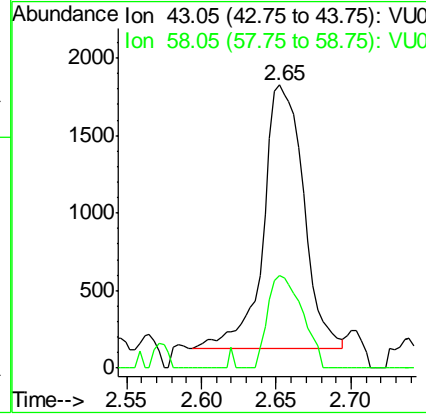
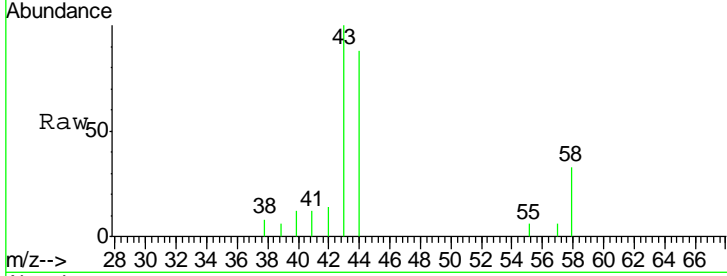
#13  
 Acetone  
 Concen: 0.834 ug/L  
 RT: 2.65 min Scan# 408  
 Delta R.T. -0.02 min  
 Lab File: VU037750.D  
 Acq: 16 Apr 2020 13:25

Instrument : MSVOA\_U  
 ClientSampled : BFS92

Tgt Ion	Ratio	Lower	Upper
43	100		
58	30.2	0.0	64.8

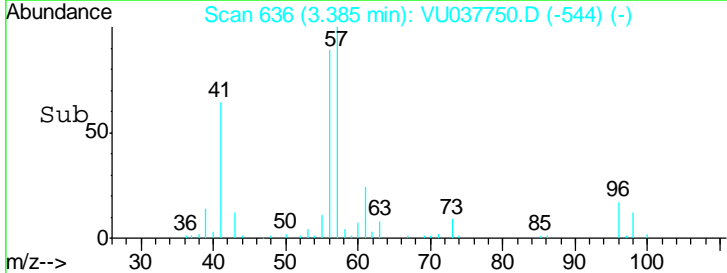
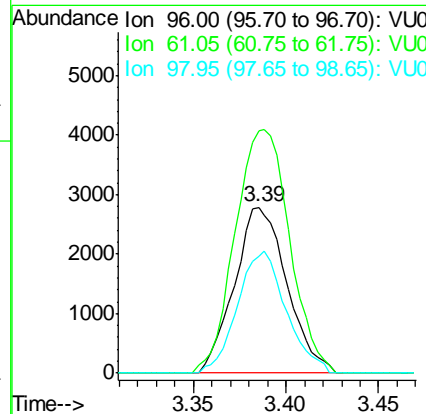
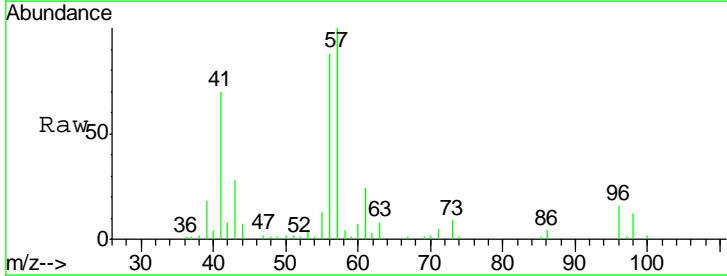
Manual Integrations  
 APPROVED

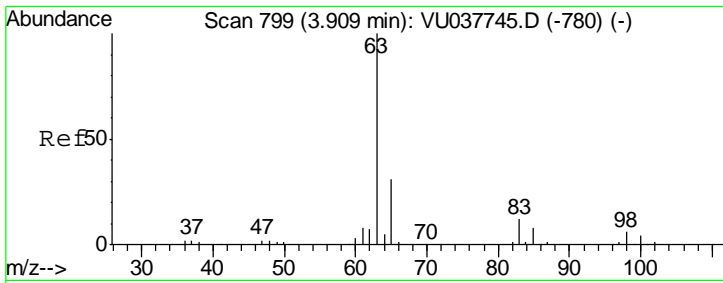
MMDadoda  
 4/17/2020 2:54:20 PM



#18  
 trans-1,2-Dichloroethene  
 Concen: 0.263 ug/L  
 RT: 3.39 min Scan# 636  
 Delta R.T. -0.00 min  
 Lab File: VU037750.D  
 Acq: 16 Apr 2020 13:25

Tgt Ion	Ratio	Lower	Upper
96	100		
61	146.1	106.7	198.3
98	70.8	44.3	82.3





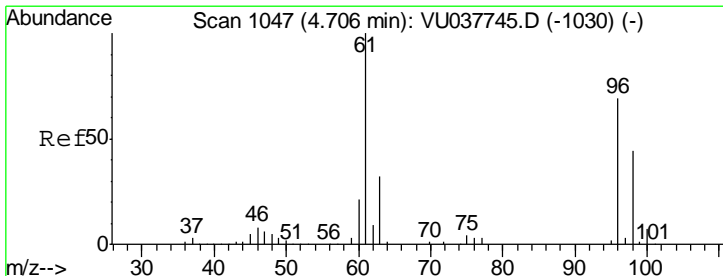
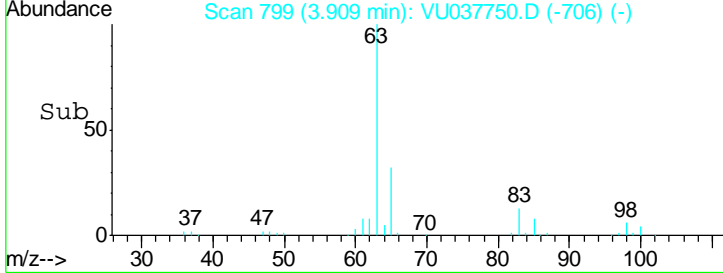
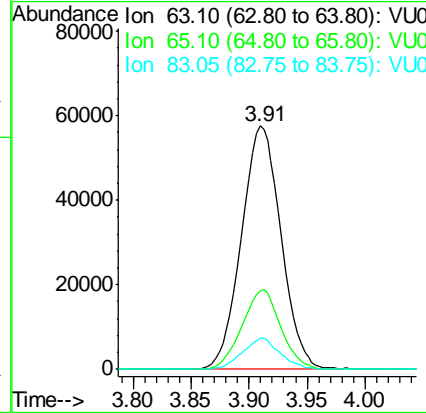
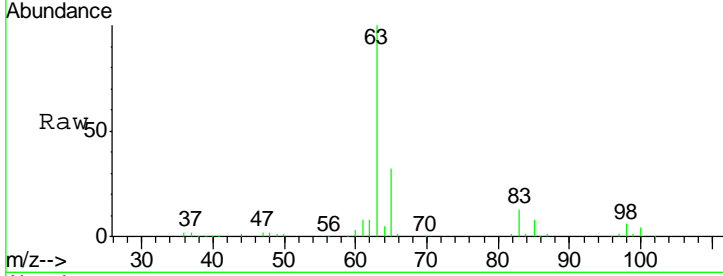
#19  
 1,1-Dichloroethane  
 Concen: 3.379 ug/L  
 RT: 3.91 min Scan# 799  
 Delta R.T. 0.00 min  
 Lab File: VU037750.D  
 Acq: 16 Apr 2020 13:25

Instrument : MSVOA\_U  
 ClientSampled : BFS92

Tgt Ion	Resp	Lower	Upper
63	136788		
65	32.4	21.6	40.2
83	12.5	8.6	16.0

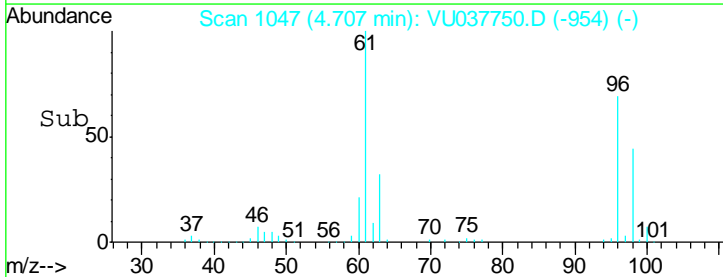
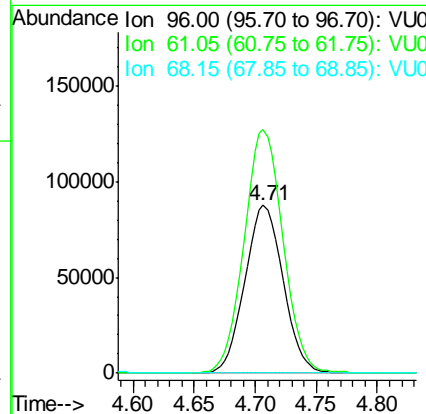
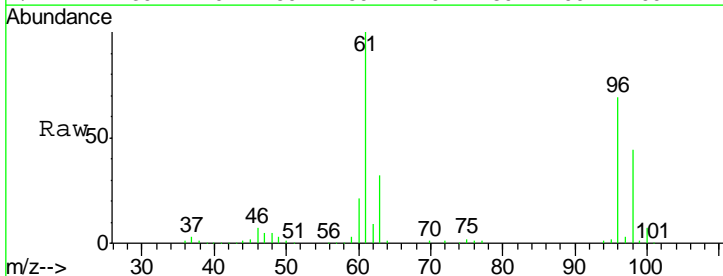
Manual Integrations  
 APPROVED

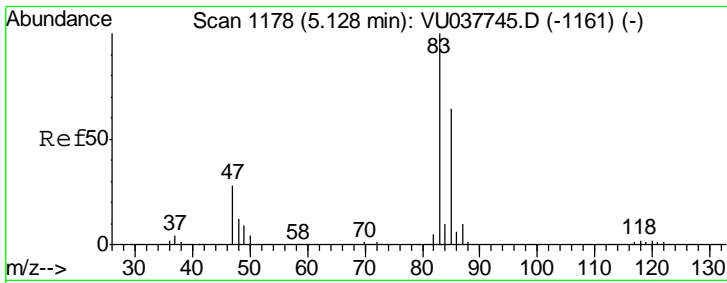
MMDadoda  
 4/17/2020 2:54:20 PM



#22  
 cis-1,2-Dichloroethene  
 Concen: 8.408 ug/L  
 RT: 4.71 min Scan# 1047  
 Delta R.T. 0.00 min  
 Lab File: VU037750.D  
 Acq: 16 Apr 2020 13:25

Tgt Ion	Resp	Lower	Upper
96	190114		
61	145.0	97.0	180.2
68	0.0	0.0	0.0



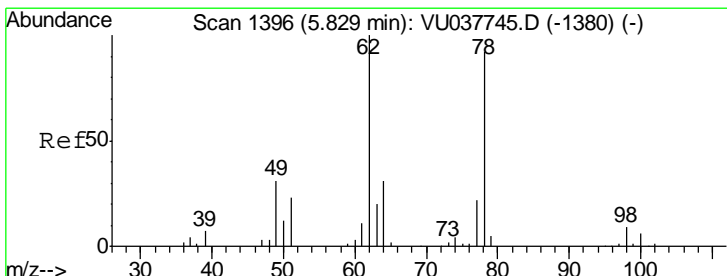
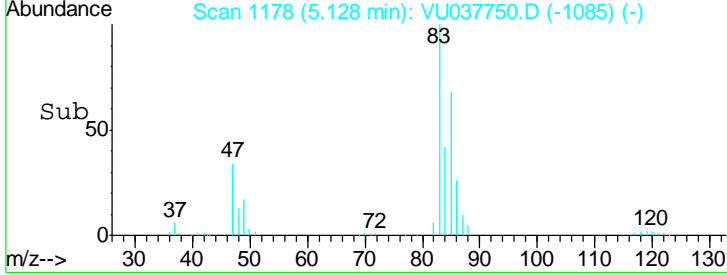
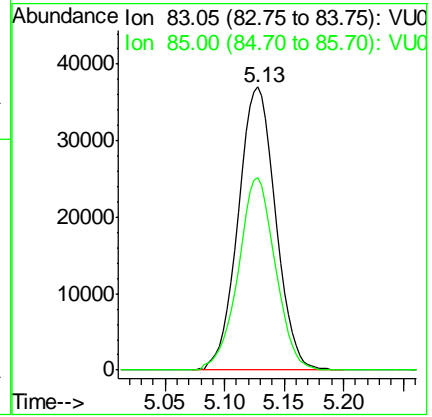
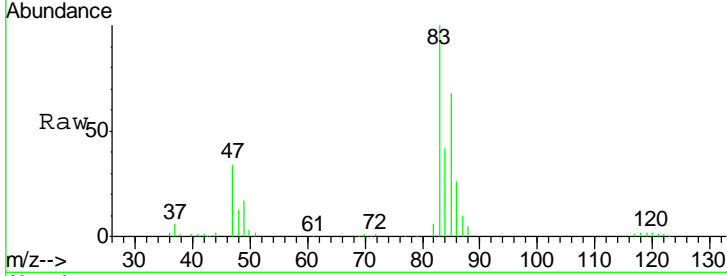


#25  
 Chloroform  
 Concen: 2.098 ug/L  
 RT: 5.13 min Scan# 1178  
 Delta R.T. 0.00 min  
 Lab File: VU037750.D  
 Acq: 16 Apr 2020 13:25

**Instrument :**  
 MSVOA\_U  
**ClientSampled :**  
 BFS92

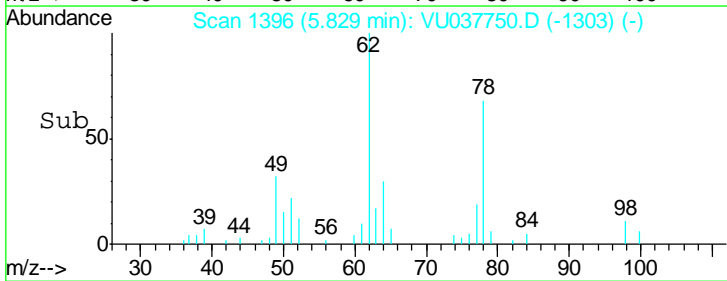
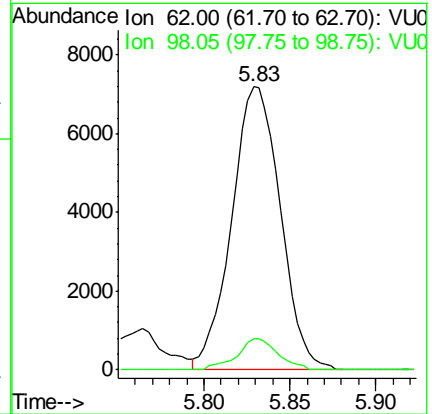
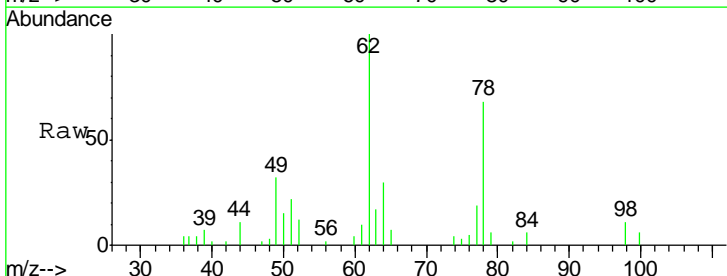
Tgt Ion	Ratio	Lower	Upper
83	100		
85	67.9	44.9	83.3

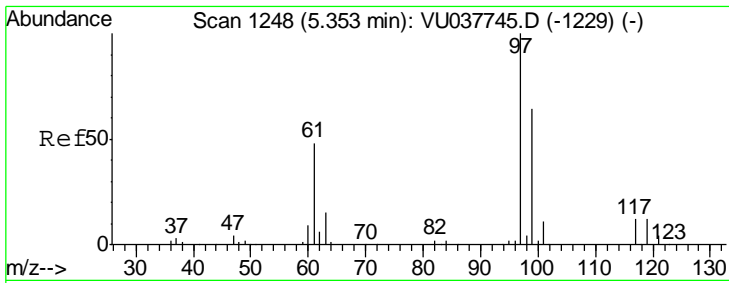
**Manual Integrations**  
**APPROVED**  
 MMDadoda  
 4/17/2020 2:54:20 PM



#27  
 1,2-Dichloroethane  
 Concen: 0.545 ug/L  
 RT: 5.83 min Scan# 1396  
 Delta R.T. 0.00 min  
 Lab File: VU037750.D  
 Acq: 16 Apr 2020 13:25

Tgt Ion	Ratio	Lower	Upper
62	100		
98	10.8	7.6	11.4



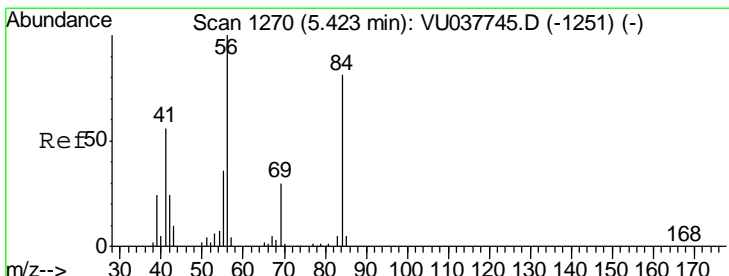
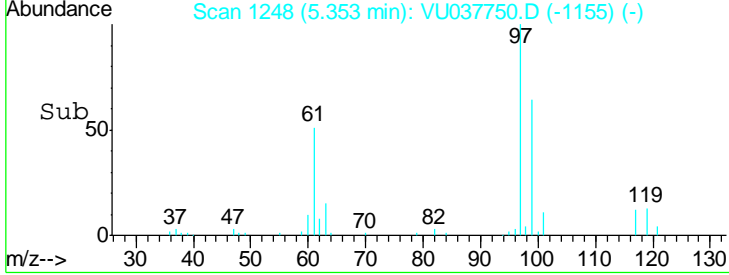
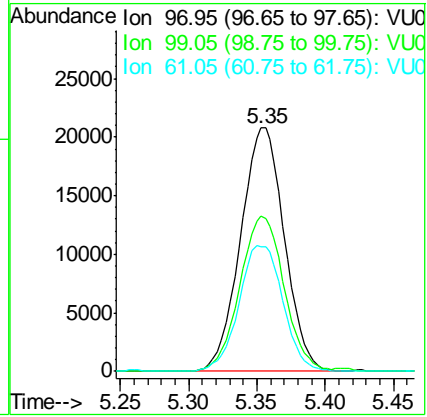
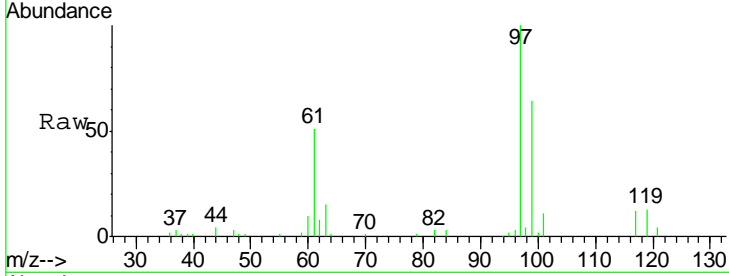


#29  
 1,1,1-Trichloroethane  
 Concen: 1.402 ug/L  
 RT: 5.35 min Scan# 1248  
 Delta R.T. 0.00 min  
 Lab File: VU037750.D  
 Acq: 16 Apr 2020 13:25

Instrument :  
 MSVOA\_U  
 ClientSampled :  
 BFS92

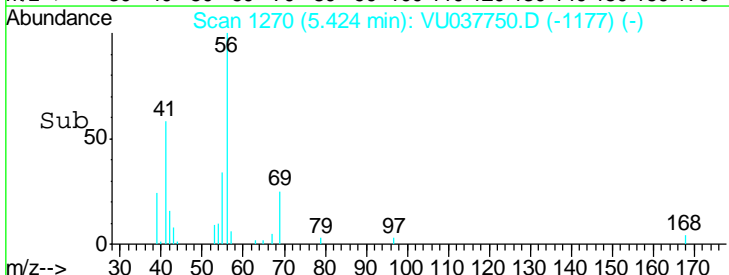
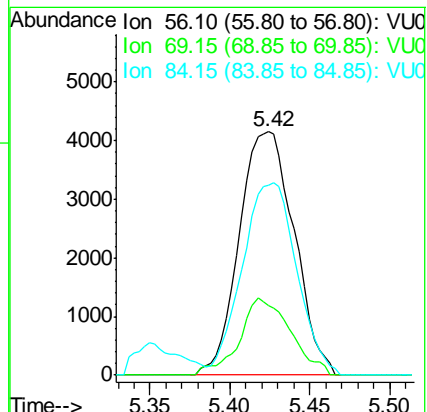
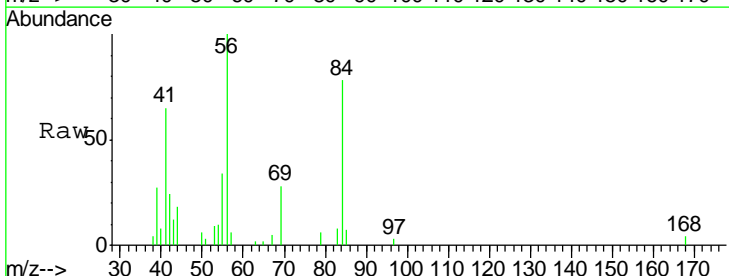
Tgt Ion	Resp	Lower	Upper
97	46314		
99	64.6	52.0	78.0
61	51.8	37.8	56.8

Manual Integrations  
**APPROVED**  
 MMDadoda  
 4/17/2020 2:54:20 PM

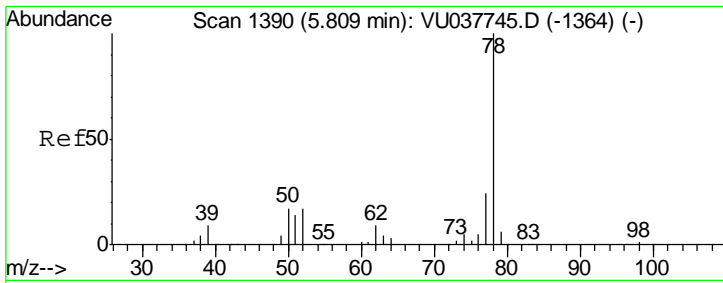


#30  
 Cyclohexane  
 Concen: 0.238 ug/L  
 RT: 5.42 min Scan# 1270  
 Delta R.T. 0.00 min  
 Lab File: VU037750.D  
 Acq: 16 Apr 2020 13:25

Tgt Ion	Resp	Lower	Upper
56	9734		
69	29.4	23.9	35.9
84	78.6	65.6	98.4



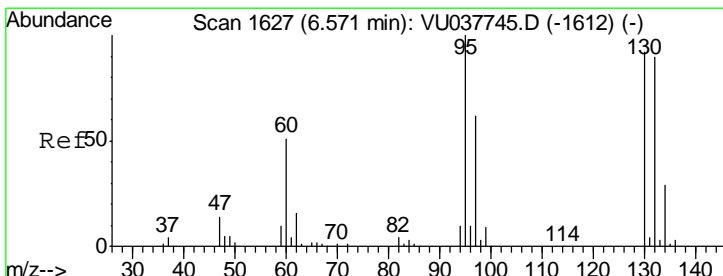
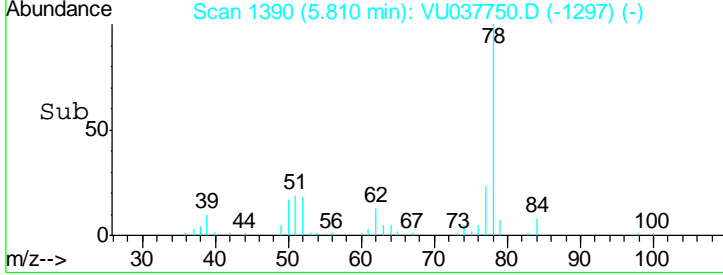
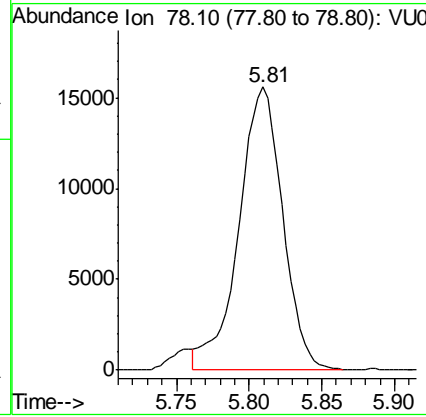
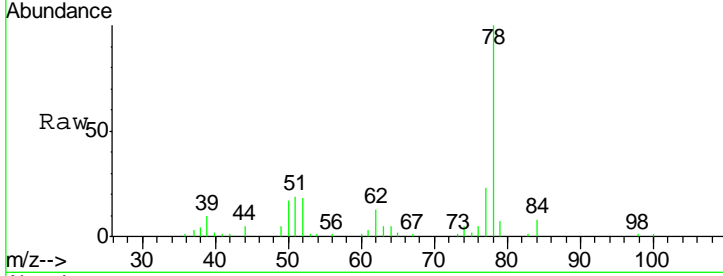




#33  
Benzene  
Concen: 0.365 ug/L m  
RT: 5.81 min Scan# 1390  
Delta R.T. 0.00 min  
Lab File: VU037750.D  
Acq: 16 Apr 2020 13:25  
Tgt Ion: 78 Resp: 32827

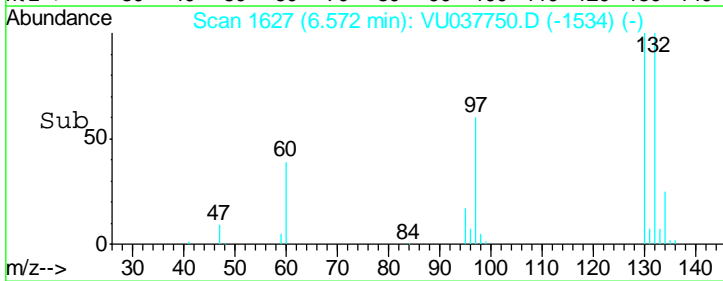
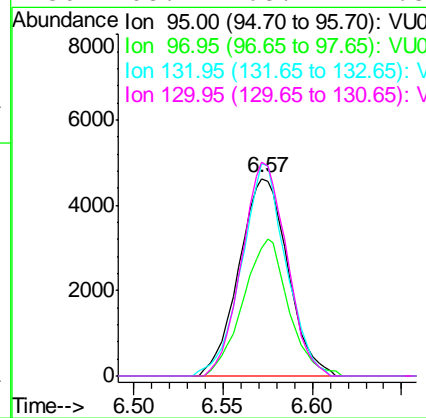
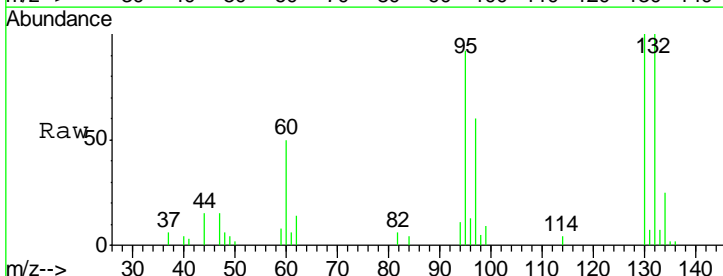
Instrument : MSVOA\_U  
ClientSampled : BFS92

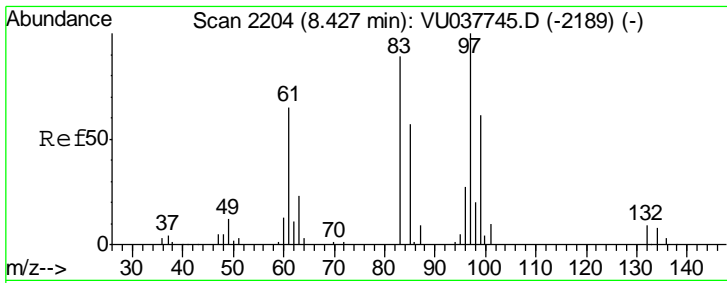
Manual Integrations APPROVED  
MMDadoda  
4/17/2020 2:54:20 PM



#34  
Trichloroethene  
Concen: 0.400 ug/L  
RT: 6.57 min Scan# 1627  
Delta R.T. 0.00 min  
Lab File: VU037750.D  
Acq: 16 Apr 2020 13:25  
Tgt Ion: 95 Resp: 8845

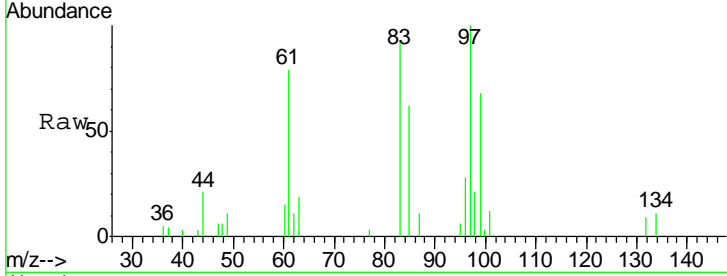
Ion	Ratio	Lower	Upper
95	100		
97	64.9	45.4	84.2
132	107.9	63.7	118.3
130	108.2	68.7	127.5





#45  
 1,1,2-Trichloroethane  
 Concen: 0.362 ug/L  
 RT: 8.43 min Scan# 2204  
 Delta R.T. 0.00 min  
 Lab File: VU037750.D  
 Acq: 16 Apr 2020 13:25

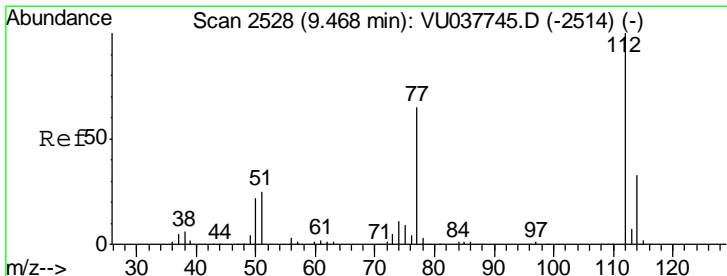
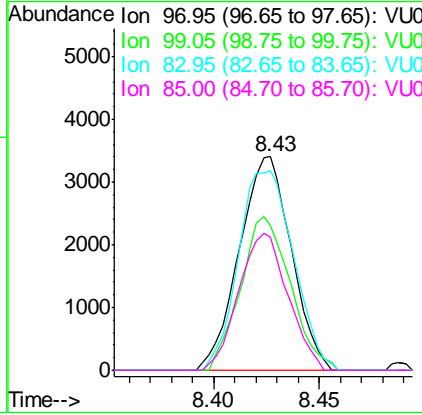
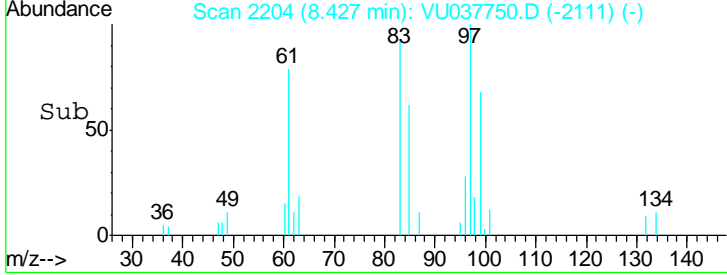
**Instrument :**  
 MSVOA\_U  
**ClientSampled :**  
 BFS92



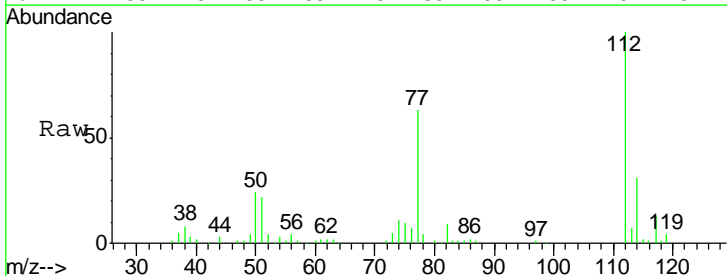
Tgt Ion: 97 Resp: 5822

Ion	Ratio	Lower	Upper
97	100		
99	68.0	43.1	80.1
83	93.4	62.4	116.0
85	62.1	39.6	73.6

**Manual Integrations**  
**APPROVED**  
 MMDadoda  
 4/17/2020 2:54:20 PM

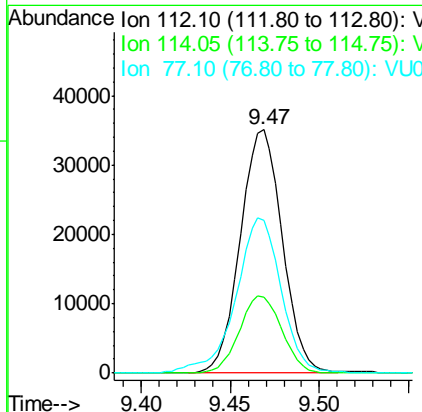
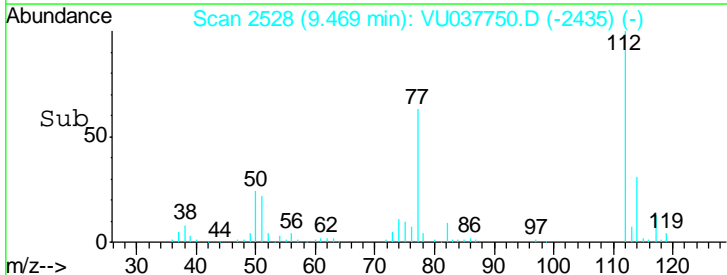


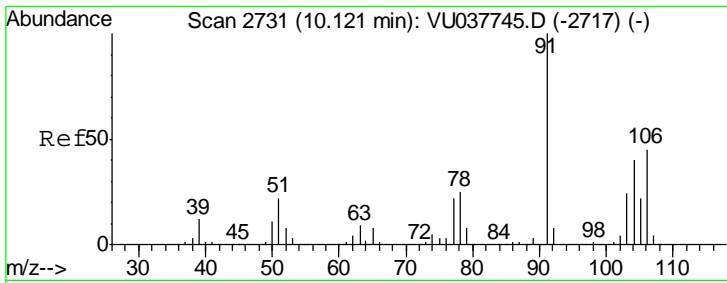
#51  
 Chlorobenzene  
 Concen: 1.003 ug/L  
 RT: 9.47 min Scan# 2528  
 Delta R.T. 0.00 min  
 Lab File: VU037750.D  
 Acq: 16 Apr 2020 13:25



Tgt Ion: 112 Resp: 57676

Ion	Ratio	Lower	Upper
112	100		
114	30.9	22.6	42.0
77	62.7	50.2	75.4





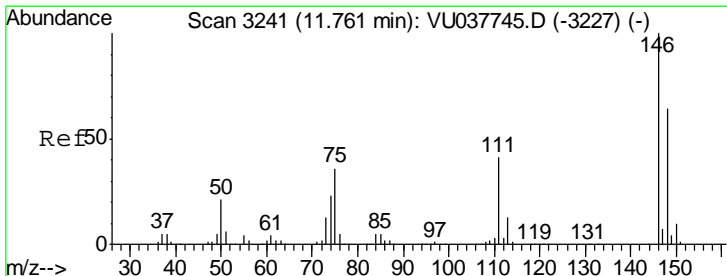
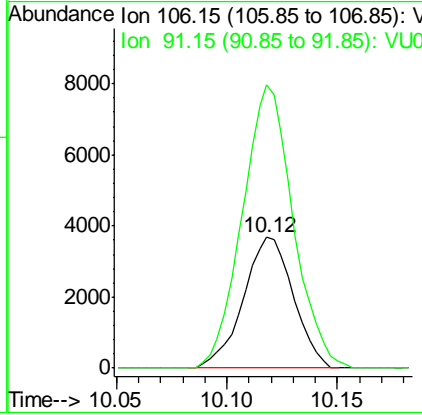
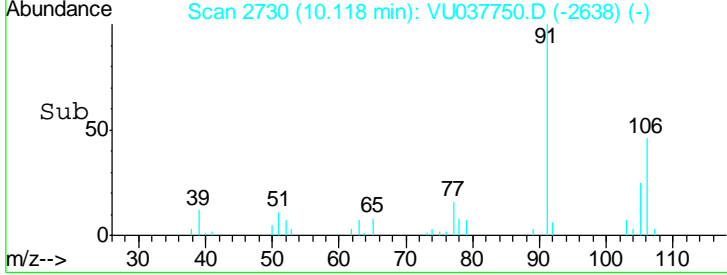
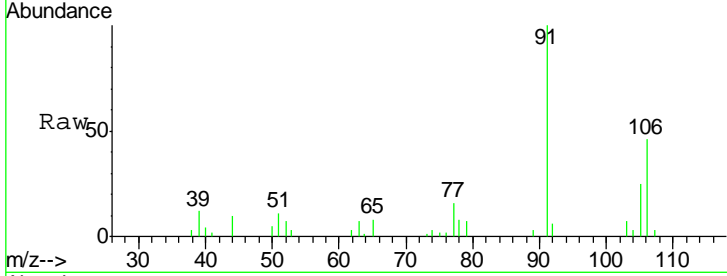
#54  
 o-Xylene  
 Concen: 0.148 ug/L  
 RT: 10.12 min Scan# 2730  
 Delta R.T. -0.00 min  
 Lab File: VU037750.D  
 Acq: 16 Apr 2020 13:25

Instrument : MSVOA\_U  
 ClientSampled : BFS92

Tgt Ion	Resp	Lower	Upper
106	5797		
106	100		
91	216.4	151.1	280.7

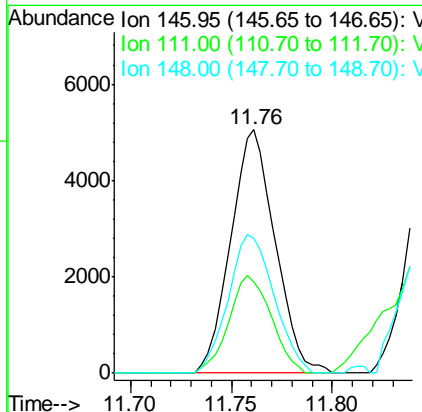
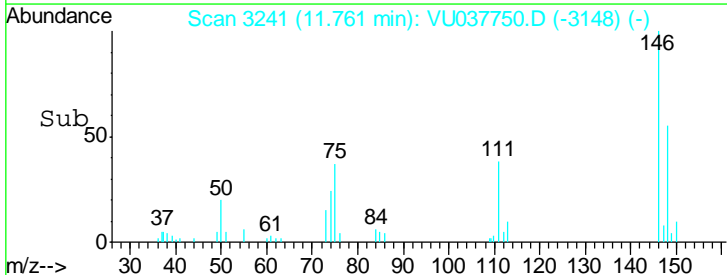
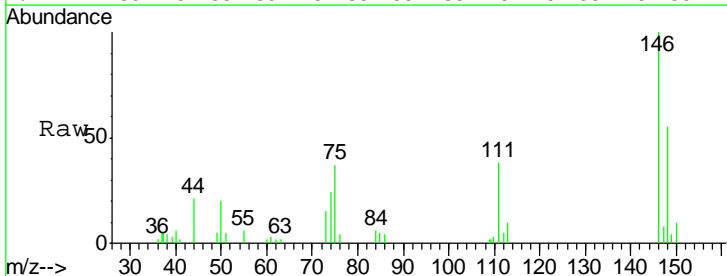
Manual Integrations  
 APPROVED

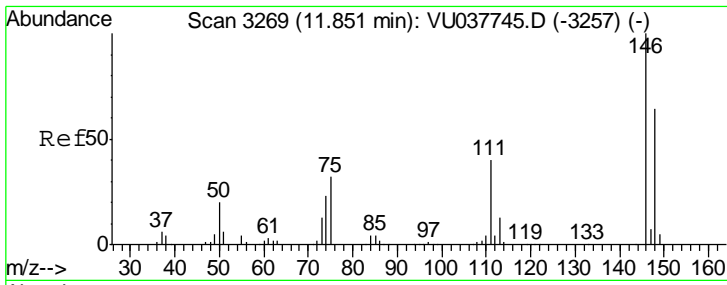
MMDadoda  
 4/17/2020 2:54:20 PM



#62  
 1,3-Dichlorobenzene  
 Concen: 0.171 ug/L  
 RT: 11.76 min Scan# 3241  
 Delta R.T. 0.00 min  
 Lab File: VU037750.D  
 Acq: 16 Apr 2020 13:25

Tgt Ion	Resp	Lower	Upper
146	7774		
146	100		
111	37.7	29.8	55.3
148	55.3	44.5	82.7





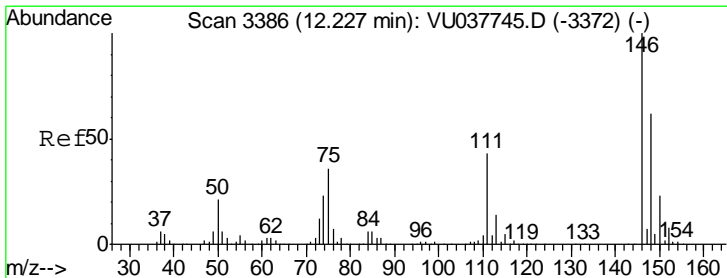
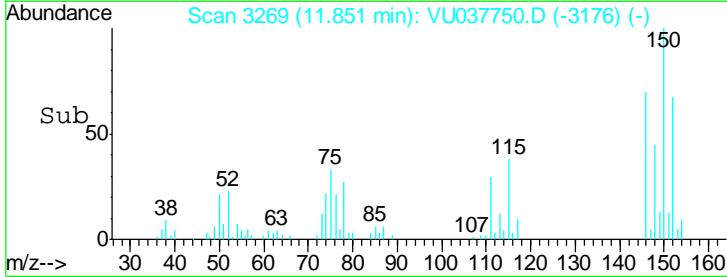
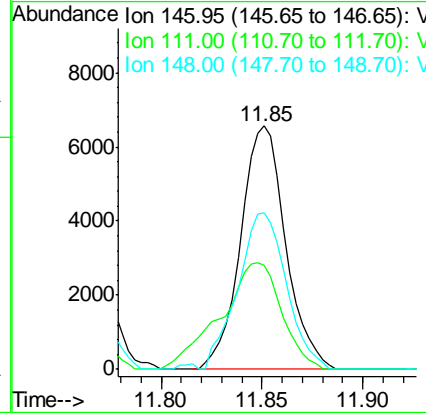
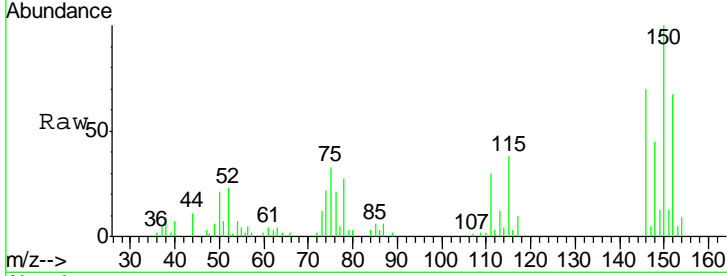
#63  
 1,4-Dichlorobenzene  
 Concen: 0.224 ug/L  
 RT: 11.85 min Scan# 3269  
 Delta R.T. 0.00 min  
 Lab File: VU037750.D  
 Acq: 16 Apr 2020 13:25

Instrument : MSVOA\_U  
 ClientSampled : BFS92

Tgt Ion	Resp	Lower	Upper
146	10259		
111	42.7	28.4	52.8
148	64.3	44.9	83.3

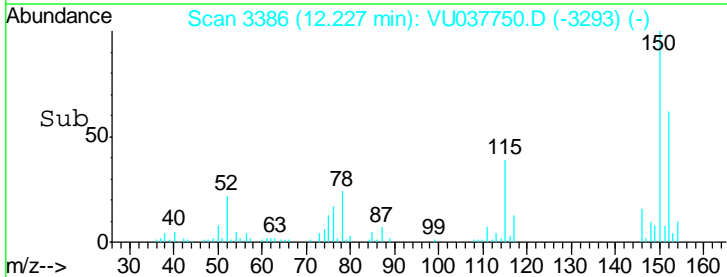
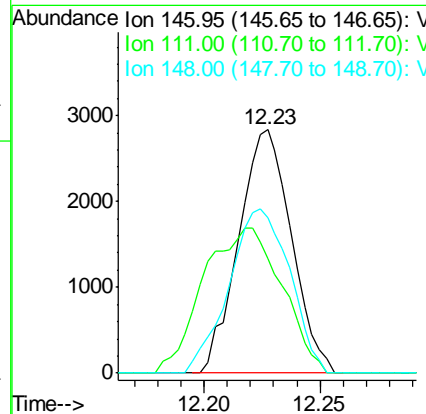
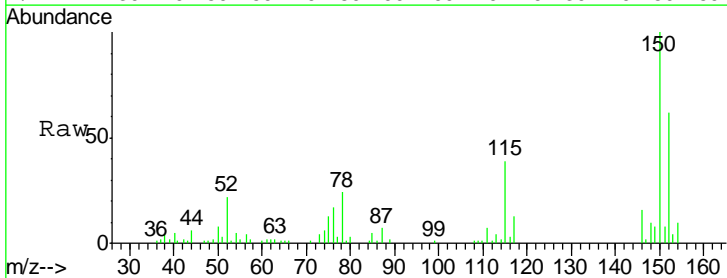
Manual Integrations  
 APPROVED

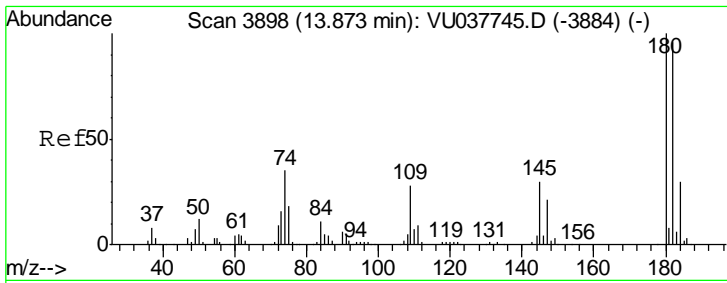
MMDadoda  
 4/17/2020 2:54:20 PM



#65  
 1,2-Dichlorobenzene  
 Concen: 0.104 ug/L  
 RT: 12.23 min Scan# 3386  
 Delta R.T. 0.00 min  
 Lab File: VU037750.D  
 Acq: 16 Apr 2020 13:25

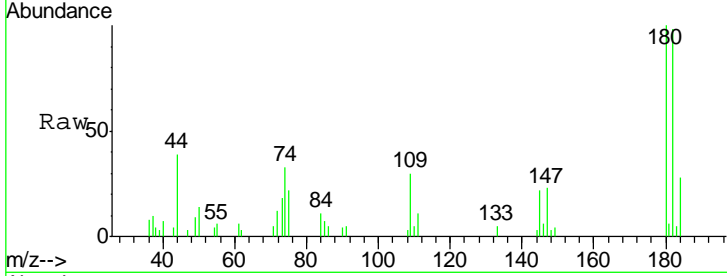
Tgt Ion	Resp	Lower	Upper
146	4471		
111	46.9	35.0	52.6
148	64.0	51.5	77.3





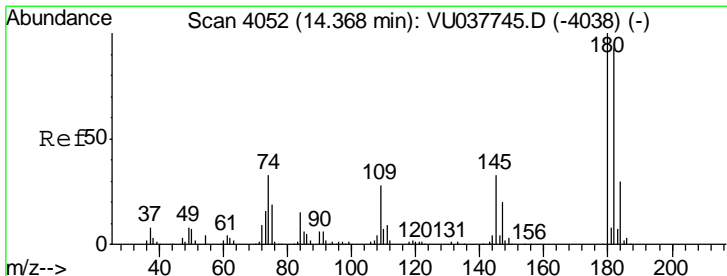
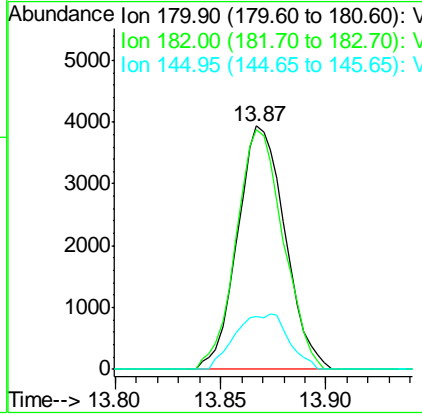
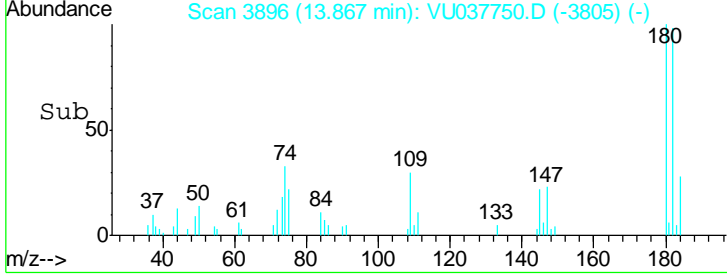
#68  
 1,2,4-trichlorobenzene  
 Concen: 0.200 ug/L  
 RT: 13.87 min Scan# 3896  
 Delta R.T. -0.01 min  
 Lab File: VU037750.D  
 Acq: 16 Apr 2020 13:25

Instrument : MSVOA\_U  
 ClientSampled : BFS92

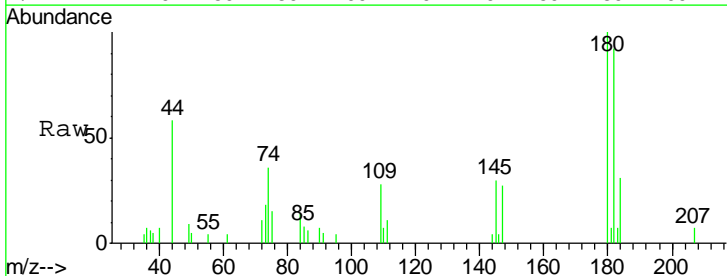


Tgt Ion	Resp	Lower	Upper
180	100		
182	97.6	76.4	114.6
145	25.5	25.1	37.7

Manual Integrations APPROVED  
 MMDadoda  
 4/17/2020 2:54:20 PM



#70  
 1,2,3-Trichlorobenzene  
 Concen: 0.161 ug/L  
 RT: 14.36 min Scan# 4050  
 Delta R.T. -0.01 min  
 Lab File: VU037750.D  
 Acq: 16 Apr 2020 13:25



Tgt Ion	Resp	Lower	Upper
180	100		
182	90.3	76.6	115.0
145	29.1	26.7	40.1

