

Data Path : Z:\VOASRV\HPCHEM1\MSVOA U\DATA\VU041620\
 Data File : VU037752.D
 Acq On : 16 Apr 2020 14:14
 Operator : JC/MD
 Sample : L2292-06
 Misc : 25mL/MSVOA U/WATER
 ALS Vial : 1 Sample Multiplier: 1

Instrument :
 MSVOA_U
 ClientSampleID :
 BF8L0

Quant Time: Apr 17 10:44:15 2020
 Quant Method : Z:\VOASRV\HPCHEM1\MSVOA_U\METHOD\SOMUTR041420WMA.M
 Quant Title : TRACE VOA SOM01.0
 QLast Update : Fri Apr 17 01:29:02 2020
 Response via : Initial Calibration

Internal Standards	R.T.	QIon	Response	Conc	Units	Dev(Min)
1) 1,4-Difluorobenzene	6.28	114	275130	5.00	ug/L	0.00
28) Chlorobenzene-d5	9.44	117	266949	5.00	ug/L	0.00
60) 1,4-Dichlorobenzene-d4	11.83	152	128037	5.00	ug/L	0.00

System Monitoring Compounds

4) Vinyl Chloride-d3	1.61	65	94772	4.55	ug/L	0.00
Spiked Amount	5.000	Range	40 - 130	Recovery	=	91.00%
7) Chloroethane-d5	1.93	69	83554	4.76	ug/L	0.00
Spiked Amount	5.000	Range	65 - 130	Recovery	=	95.20%
11) 1,1-Dichloroethene-d2	2.59	63	125444	3.39	ug/L	0.00
Spiked Amount	5.000	Range	60 - 125	Recovery	=	67.80%
20) 2-Butanone-d5	4.66	46	306474	53.60	ug/L	-0.01
Spiked Amount	50.000	Range	40 - 130	Recovery	=	107.20%
24) Chloroform-d	5.10	84	158307	4.76	ug/L	0.00
Spiked Amount	5.000	Range	70 - 125	Recovery	=	95.20%
26) 1,2-Dichloroethane-d4	5.74	65	98112	5.13	ug/L	0.00
Spiked Amount	5.000	Range	70 - 130	Recovery	=	102.60%
32) Benzene-d6	5.76	84	346182	4.79	ug/L	0.00
Spiked Amount	5.000	Range	70 - 125	Recovery	=	95.80%
36) 1,2-Dichloropropane-d6	6.72	67	116086	4.95	ug/L	0.00
Spiked Amount	5.000	Range	60 - 140	Recovery	=	99.00%
41) Toluene-d8	7.92	98	321606	4.91	ug/L	0.00
Spiked Amount	5.000	Range	70 - 130	Recovery	=	98.20%
43) trans-1,3-Dichloropropene-	8.20	79	48219	4.57	ug/L	0.00
Spiked Amount	5.000	Range	55 - 130	Recovery	=	91.40%
46) 2-Hexanone-d5	8.65	63	263888	48.89	ug/L	0.00
Spiked Amount	50.000	Range	45 - 130	Recovery	=	97.78%
57) 1,1,2,2-Tetrachloroethane-	10.77	84	90474	4.88	ug/L	0.00
Spiked Amount	5.000	Range	65 - 120	Recovery	=	97.60%
64) 1,2-Dichlorobenzene-d4	12.21	152	115134	5.04	ug/L	0.00
Spiked Amount	5.000	Range	80 - 120	Recovery	=	100.80%

Target Compounds

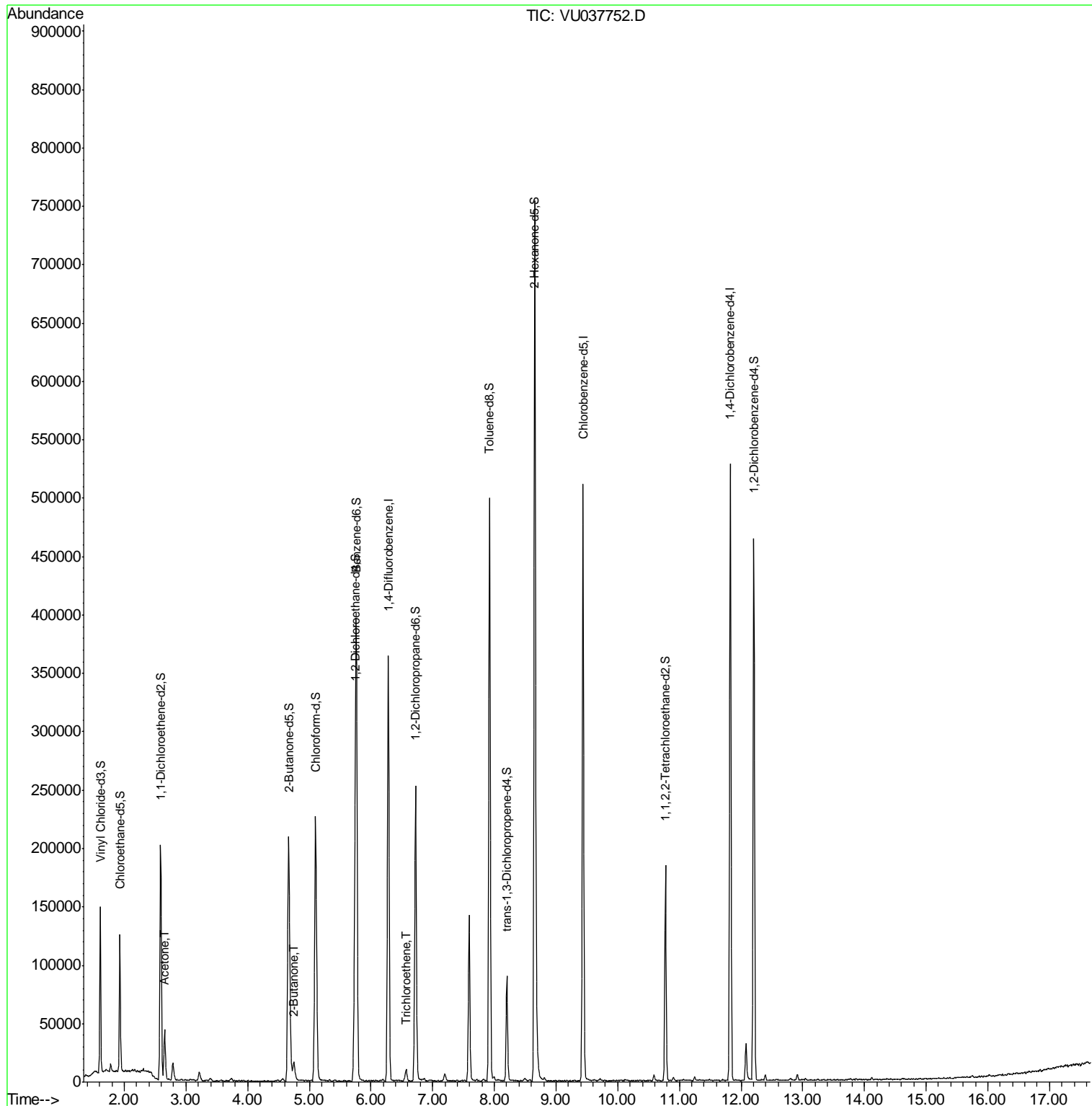
Target Compounds	R.T.	QIon	Response	Conc	Units	Ovalue
13) Acetone	2.66	43	46067	12.220	ug/L	98
21) 2-Butanone	4.75	43	22734	3.319	ug/L	95
34) Trichloroethene	6.57	95	2738	0.126	ug/L	83

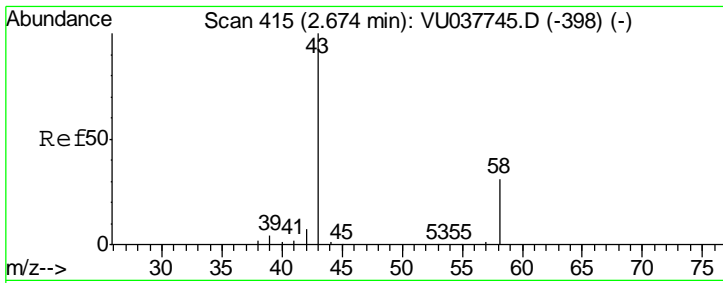
(#) = qualifier out of range (m) = manual integration (+) = signals summed

Data Path : Z:\VOASRV\HPCHEM1\MSVOA U\DATA\VU041620\
 Data File : VU037752.D
 Acq On : 16 Apr 2020 14:14
 Operator : JC/MD
 Sample : L2292-06
 Misc : 25mL/MSVOA U/WATER
 ALS Vial : 1 Sample Multiplier: 1

Instrument :
 MSVOA_U
 ClientSampleId :
 BF8L0

Quant Time: Apr 17 10:44:15 2020
 Quant Method : Z:\VOASRV\HPCHEM1\MSVOA_U\METHOD\SOMUTR041420WMA.M
 Quant Title : TRACE VOA SOM01.0
 QLast Update : Fri Apr 17 01:29:02 2020
 Response via : Initial Calibration

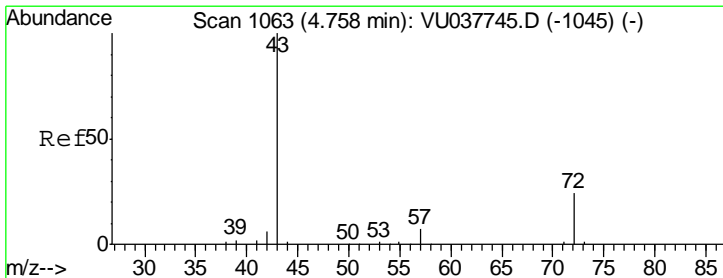
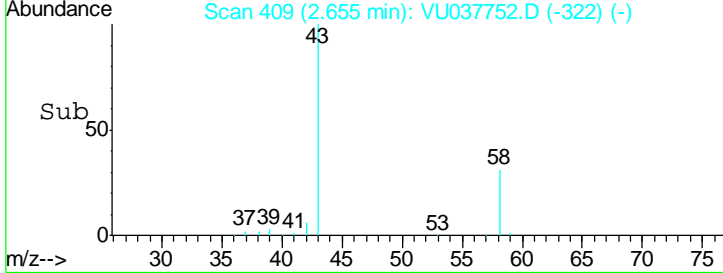
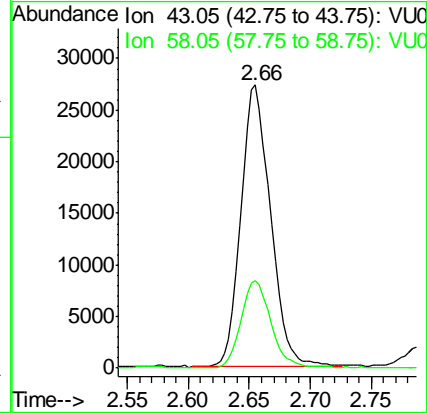
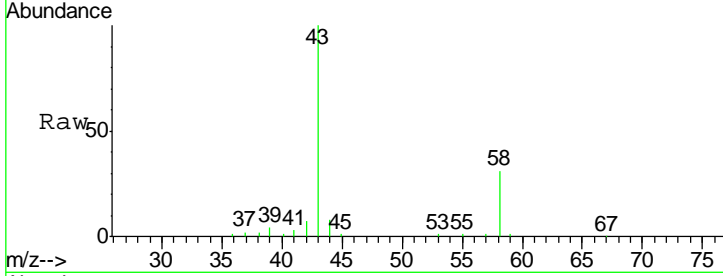




#13
 Acetone
 Concen: 12.220 ug/L
 RT: 2.66 min Scan# 409
 Delta R.T. -0.02 min
 Lab File: VU037752.D
 Acq: 16 Apr 2020 14:14

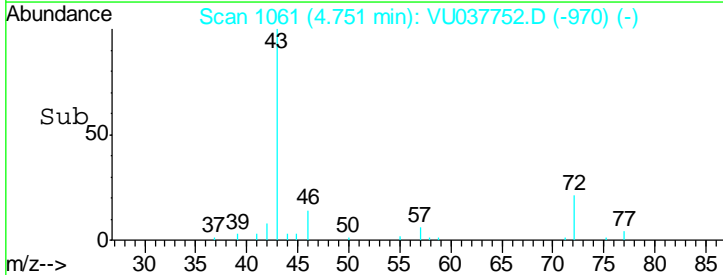
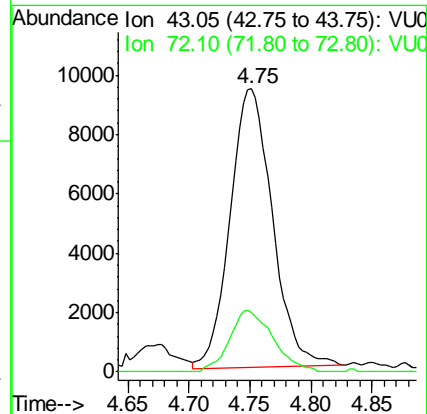
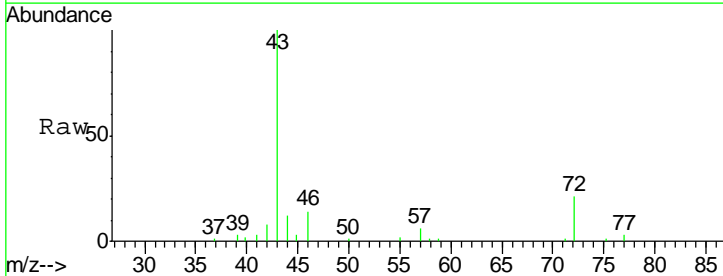
Instrument :
 MSVOA_U
 ClientSampled :
 BF8L0

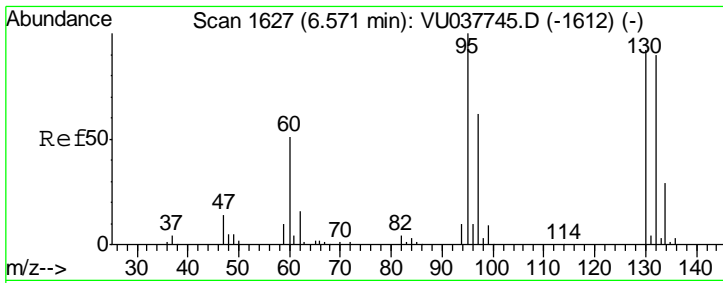
Tgt Ion	Resp	Lower	Upper
43	100		
58	31.1	0.0	64.8



#21
 2-Butanone
 Concen: 3.319 ug/L
 RT: 4.75 min Scan# 1061
 Delta R.T. -0.01 min
 Lab File: VU037752.D
 Acq: 16 Apr 2020 14:14

Tgt Ion	Resp	Lower	Upper
43	100		
72	22.6	12.6	37.6



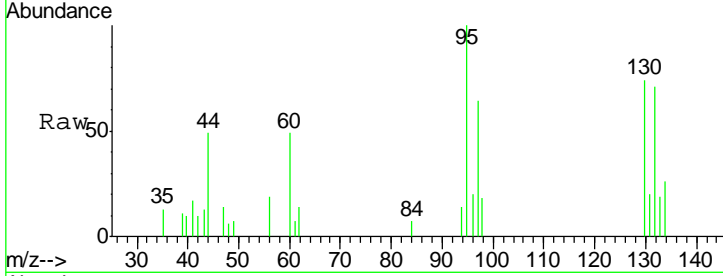


#34
 Trichloroethene
 Concen: 0.126 ug/L
 RT: 6.57 min Scan# 1626
 Delta R.T. -0.00 min
 Lab File: VU037752.D
 Acq: 16 Apr 2020 14:14

Instrument :
 MSVOA_U
 ClientSampled :
 BF8L0

Tot Ion: 95 Resp: 2738

Ion	Ratio	Lower	Upper
95	100		
97	64.1	45.4	84.2
132	71.2	63.7	118.3
130	74.2	68.7	127.5



Abundance Ion 95.00 (94.70 to 95.70): VU0
 Ion 96.95 (96.65 to 97.65): VU0
 Ion 131.95 (131.65 to 132.65): V
 Ion 129.95 (129.65 to 130.65): V

