

Data Path : Z:\VOASRV\HPCHEM1\MSVOA U\DATA\VU041720\
 Data File : VU037782.D
 Acq On : 17 Apr 2020 17:59
 Operator : JC/MD
 Sample : L2292-09DL 5X
 Misc : 25mL/MSVOA U/WATER
 ALS Vial : 1 Sample Multiplier: 1

Instrument :
 MSVOA_U
 ClientSampled :

Quant Time: Apr 18 03:56:53 2020
 Quant Method : Z:\VOASRV\HPCHEM1\MSVOA_U\METHOD\SOMUTR041420WMA.M
 Quant Title : TRACE VOA SOM01.0
 QLast Update : Sat Apr 18 01:19:54 2020
 Response via : Initial Calibration

Internal Standards	R.T.	QIon	Response	Conc	Units	Dev(Min)
1) 1,4-Difluorobenzene	6.28	114	260857	5.00	ug/L	0.00
28) Chlorobenzene-d5	9.44	117	263449	5.00	ug/L	0.00
60) 1,4-Dichlorobenzene-d4	11.83	152	139826	5.00	ug/L	0.00

System Monitoring Compounds

4) Vinyl Chloride-d3	1.61	65	81029	4.10	ug/L	0.00
Spiked Amount	5.000	Range	40 - 130	Recovery	=	82.00%
7) Chloroethane-d5	1.89	69	71517	4.29	ug/L	-0.04
Spiked Amount	5.000	Range	65 - 130	Recovery	=	85.80%
11) 1,1-Dichloroethene-d2	2.58	63	106498	3.04	ug/L	-0.02
Spiked Amount	5.000	Range	60 - 125	Recovery	=	60.80%
20) 2-Butanone-d5	4.66	46	289995	53.49	ug/L	0.00
Spiked Amount	50.000	Range	40 - 130	Recovery	=	106.98%
24) Chloroform-d	5.10	84	139423	4.42	ug/L	0.00
Spiked Amount	5.000	Range	70 - 125	Recovery	=	88.40%
26) 1,2-Dichloroethane-d4	5.74	65	88069	4.86	ug/L	0.00
Spiked Amount	5.000	Range	70 - 130	Recovery	=	97.20%
32) Benzene-d6	5.76	84	305368	4.28	ug/L	0.00
Spiked Amount	5.000	Range	70 - 125	Recovery	=	85.60%
36) 1,2-Dichloropropane-d6	6.72	67	106375	4.59	ug/L	0.00
Spiked Amount	5.000	Range	60 - 140	Recovery	=	91.80%
41) Toluene-d8	7.92	98	279389	4.32	ug/L	0.00
Spiked Amount	5.000	Range	70 - 130	Recovery	=	86.40%
43) trans-1,3-Dichloropropene-	8.20	79	43975	4.22	ug/L	0.00
Spiked Amount	5.000	Range	55 - 130	Recovery	=	84.40%
46) 2-Hexanone-d5	8.66	63	288821	54.22	ug/L	0.00
Spiked Amount	50.000	Range	45 - 130	Recovery	=	108.44%
57) 1,1,2,2-Tetrachloroethane-	10.77	84	96870	5.30	ug/L	0.00
Spiked Amount	5.000	Range	65 - 120	Recovery	=	106.00%
64) 1,2-Dichlorobenzene-d4	12.21	152	117335	4.70	ug/L	0.00
Spiked Amount	5.000	Range	80 - 120	Recovery	=	94.00%

Target Compounds

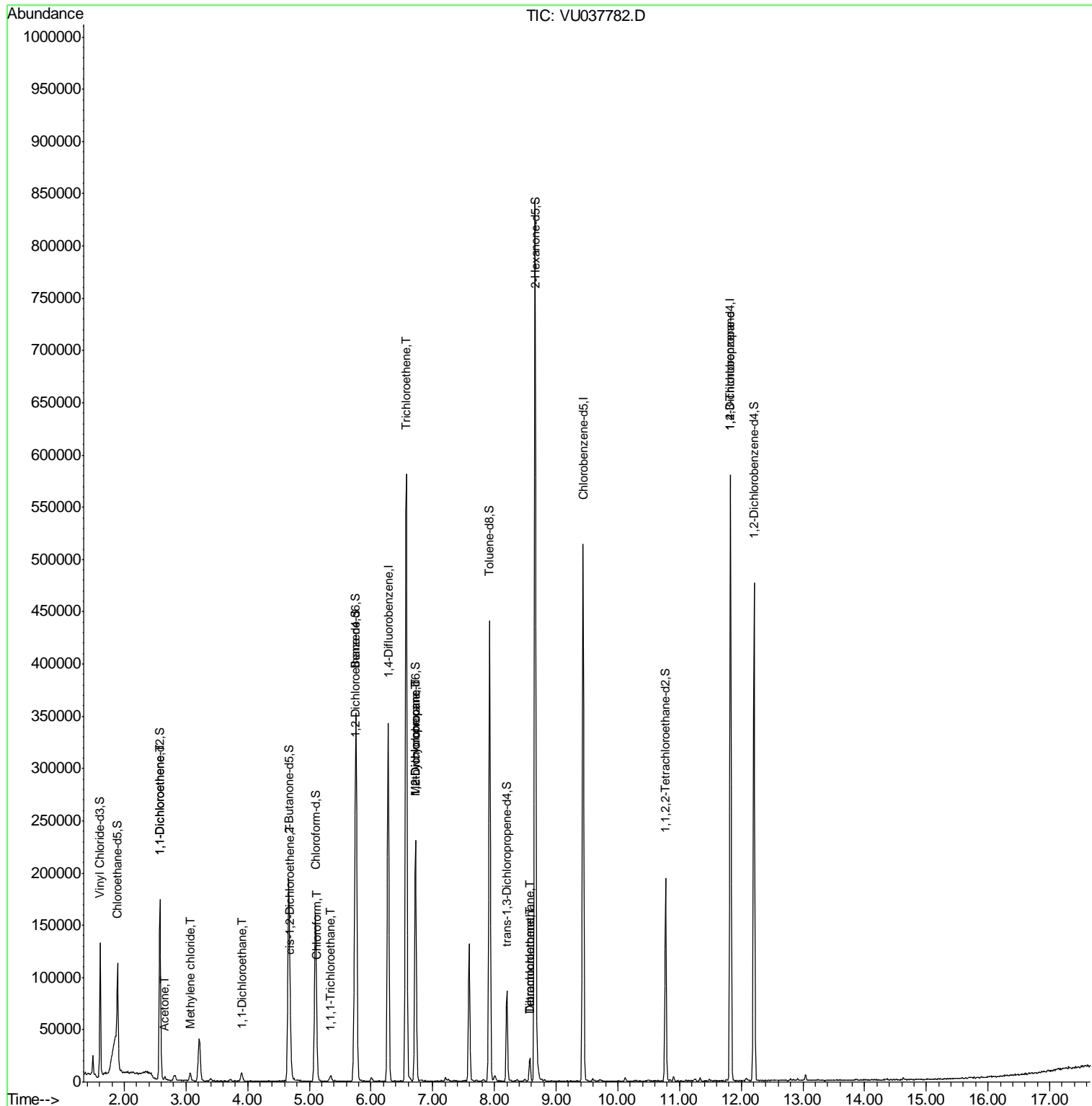
Target Compounds	R.T.	QIon	Response	Conc	Units	Ovalue
12) 1,1-Dichloroethene	2.58	96	2278	0.127	ug/L #	1
13) Acetone	2.66	43	4063	1.137	ug/L	82
16) Methylene chloride	3.07	84	3200	0.158	ug/L	93
19) 1,1-Dichloroethane	3.90	63	9186	0.243	ug/L #	93
22) cis-1,2-Dichloroethene	4.70	96	2983	0.141	ug/L	82
25) Chloroform	5.13	83	10387	0.290	ug/L	96
29) 1,1,1-Trichloroethane	5.35	97	3758	0.118	ug/L	94
34) Trichloroethene	6.57	95	198482	9.278	ug/L	96
35) Methylcyclohexane	6.72	83	23835	0.636	ug/L #	17
37) 1,2-Dichloropropane	6.72	63	11439	0.496	ug/L #	87
47) Tetrachloroethene	8.57	164	4737	0.308	ug/L	92
49) Dibromochloromethane	8.57	129	4281	0.241	ug/L #	11
59) 1,2,3-Trichloropropane	11.83	75	20034	1.326	ug/L	94

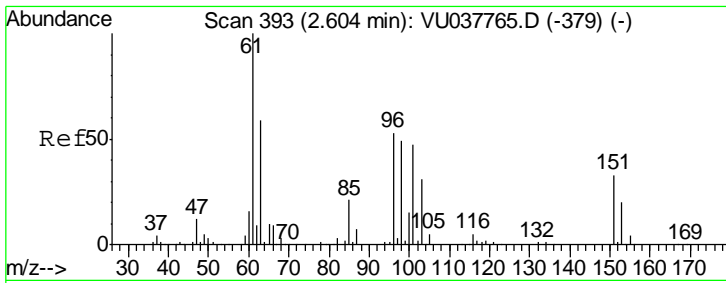
(#) = qualifier out of range (m) = manual integration (+) = signals summed

Data Path : Z:\VOASRV\HPCHEM1\MSVOA U\DATA\VU041720\
 Data File : VU037782.D
 Acq On : 17 Apr 2020 17:59
 Operator : JC/MD
 Sample : L2292-09DL 5X
 Misc : 25mL/MSVOA U/WATER
 ALS Vial : 1 Sample Multiplier: 1

Instrument :
 MSVOA_U
 ClientSampled :

Quant Time: Apr 18 03:56:53 2020
 Quant Method : Z:\VOASRV\HPCHEM1\MSVOA_U\METHOD\SOMUTR041420WMA.M
 Quant Title : TRACE VOA SOM01.0
 QLast Update : Sat Apr 18 01:19:54 2020
 Response via : Initial Calibration

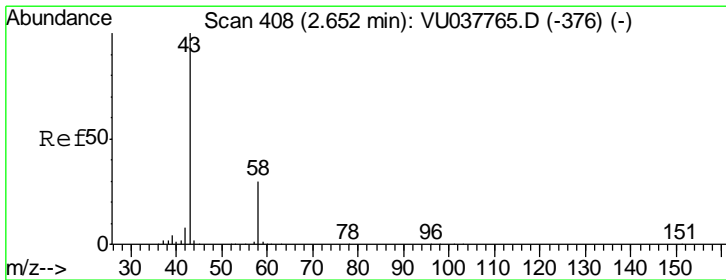
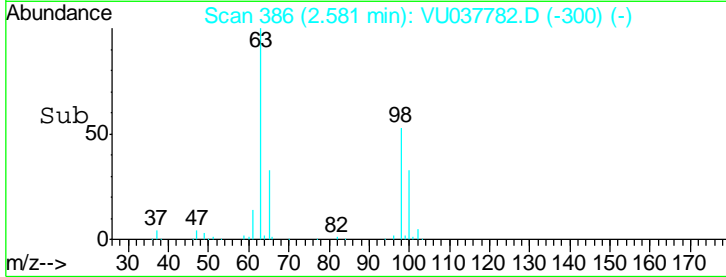
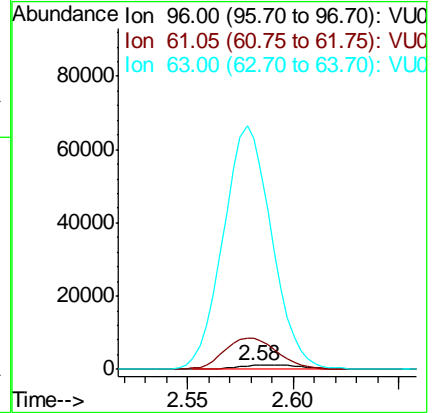
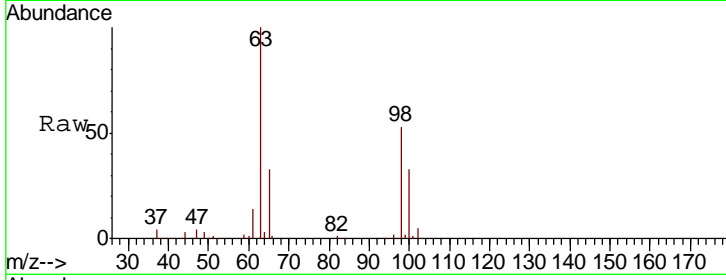




#12
 1,1-Dichloroethene
 Concen: 0.127 ug/L
 RT: 2.58 min Scan# 386
 Delta R.T. -0.02 min
 Lab File: VU037782.D
 Acq: 17 Apr 2020 17:59

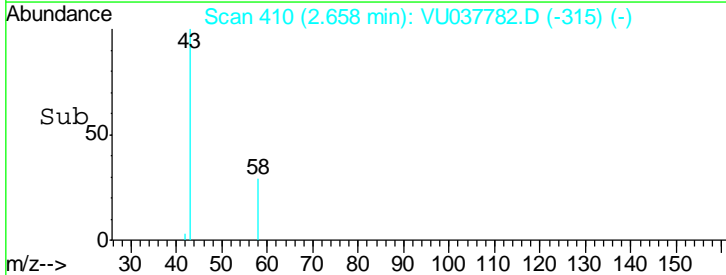
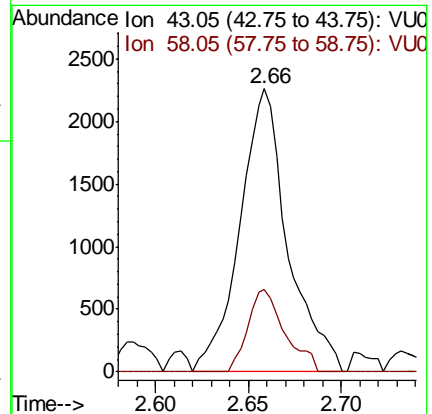
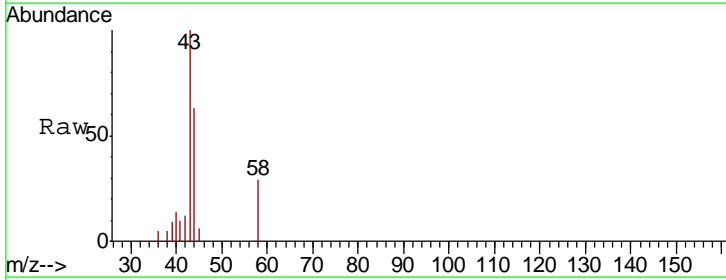
Instrument :
 MSVOA_U
 ClientSampled :

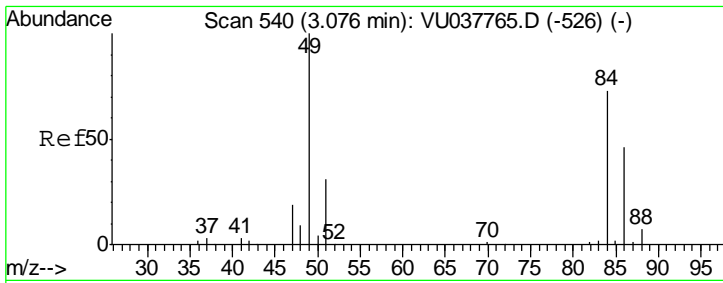
Tgt Ion: 96 Resp: 2278
 Ion Ratio Lower Upper
 96 100
 61 801.5 127.7 237.3#
 63 5852.3 85.0 157.8#



#13
 Acetone
 Concen: 1.137 ug/L
 RT: 2.66 min Scan# 410
 Delta R.T. 0.01 min
 Lab File: VU037782.D
 Acq: 17 Apr 2020 17:59

Tgt Ion: 43 Resp: 4063
 Ion Ratio Lower Upper
 43 100
 58 22.5 0.0 64.8

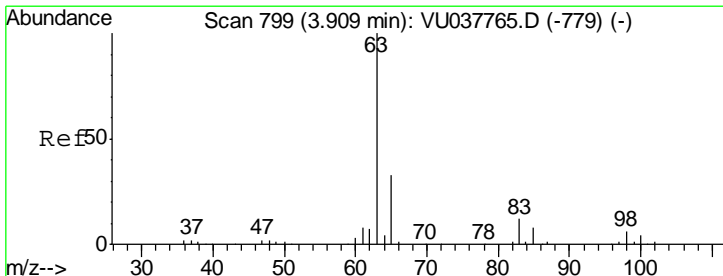
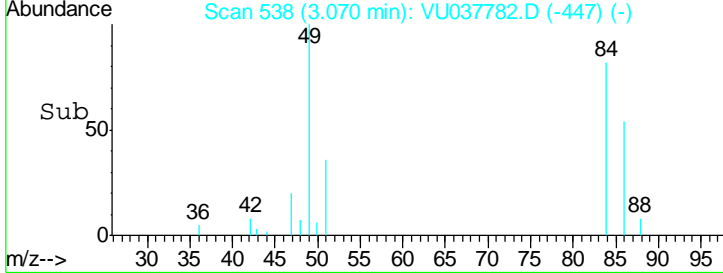
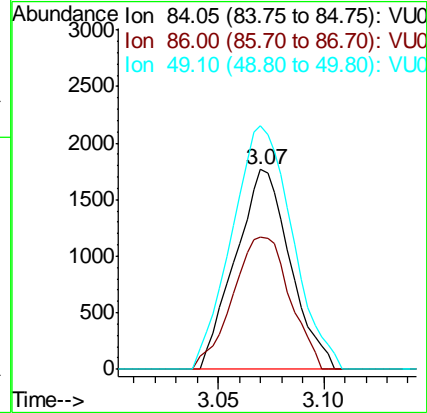
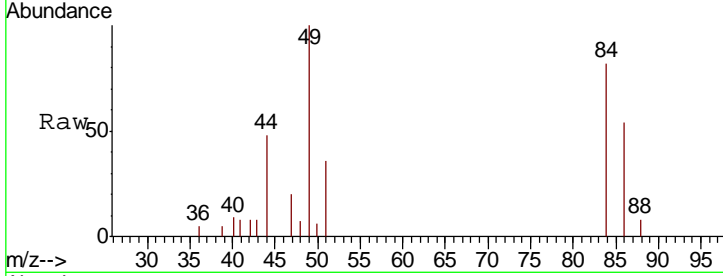




#16
 Methylene chloride
 Concen: 0.158 ug/L
 RT: 3.07 min Scan# 538
 Delta R.T. -0.01 min
 Lab File: VU037782.D
 Acq: 17 Apr 2020 17:59

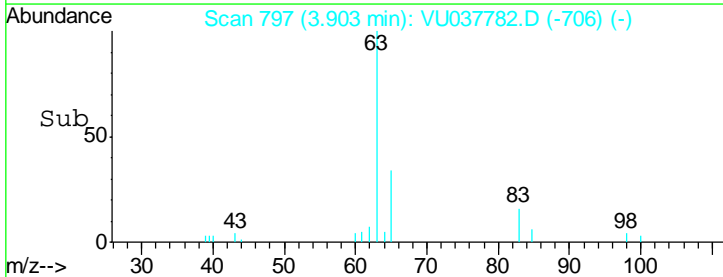
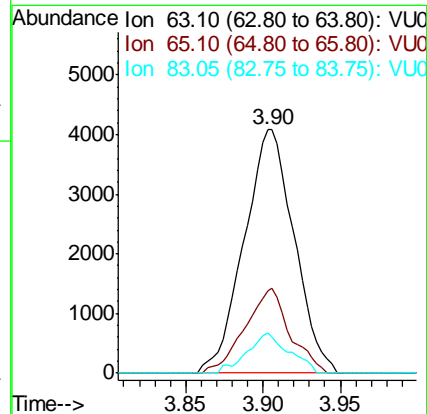
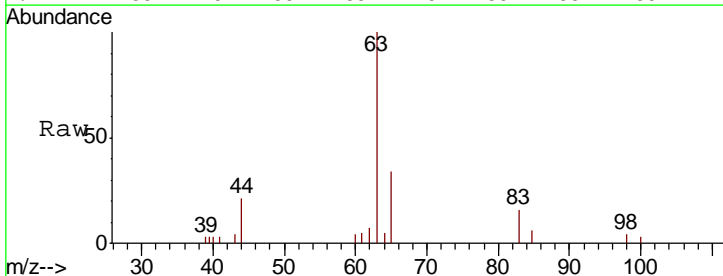
Instrument :
 MSVOA_U
 ClientSampled :

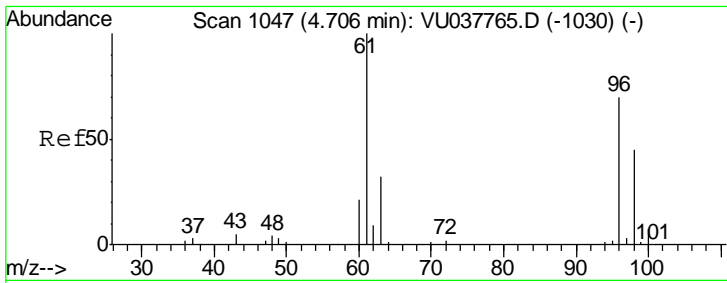
Tgt Ion	Resp	Lower	Upper
84	100		
86	65.9	44.2	82.0
49	121.8	92.4	171.6



#19
 1,1-Dichloroethane
 Concen: 0.243 ug/L
 RT: 3.90 min Scan# 797
 Delta R.T. -0.01 min
 Lab File: VU037782.D
 Acq: 17 Apr 2020 17:59

Tgt Ion	Resp	Lower	Upper
63	100		
65	34.0	21.6	40.2
83	16.3	8.6	16.0#

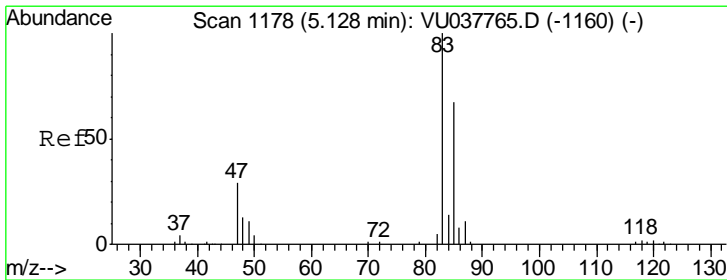
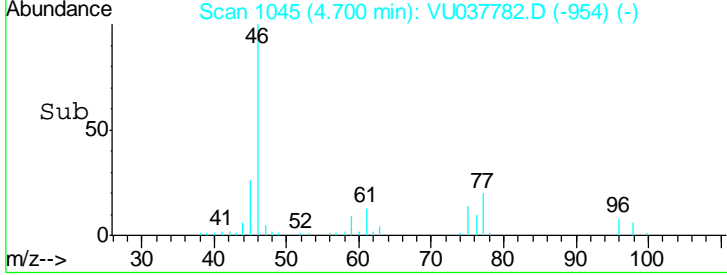
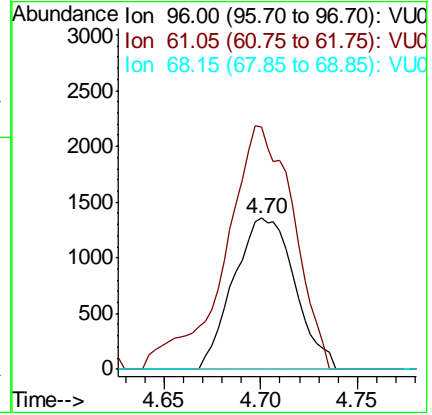
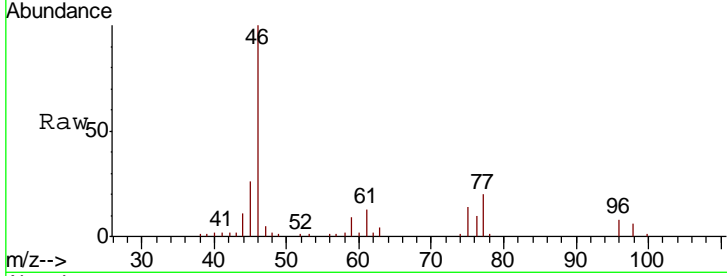




#22
 cis-1,2-Dichloroethene
 Concen: 0.141 ug/L
 RT: 4.70 min Scan# 1045
 Delta R.T. -0.01 min
 Lab File: VU037782.D
 Acq: 17 Apr 2020 17:59

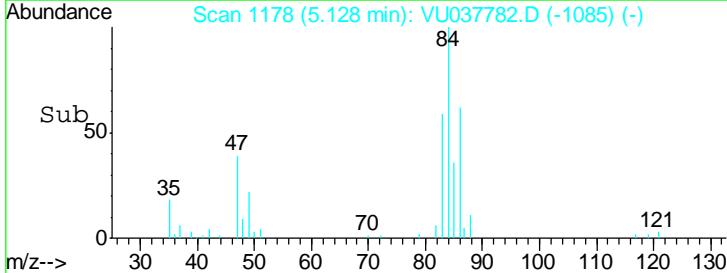
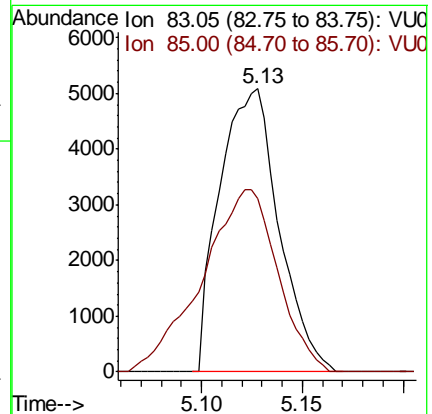
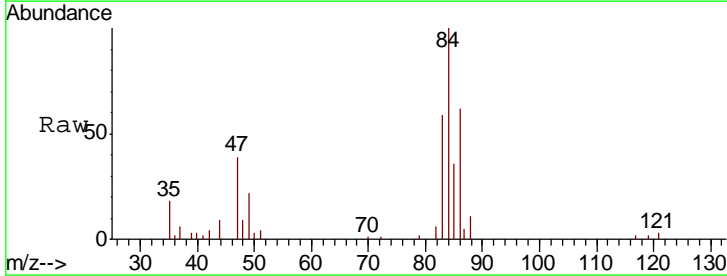
Instrument : MSVOA_U
 ClientSampled :

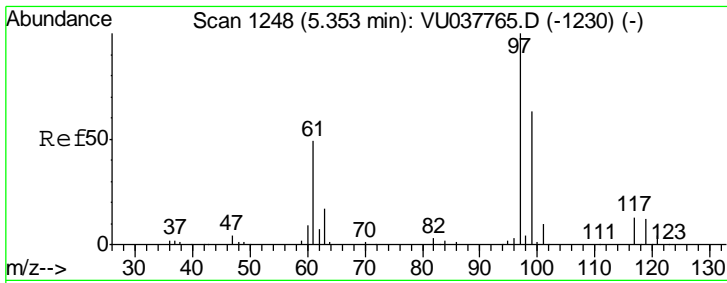
Tgt Ion	Resp	Lower	Upper
96	2983		
61	160.4	97.0	180.2
68	0.0	0.0	0.0



#25
 Chloroform
 Concen: 0.290 ug/L
 RT: 5.13 min Scan# 1178
 Delta R.T. 0.00 min
 Lab File: VU037782.D
 Acq: 17 Apr 2020 17:59

Tgt Ion	Resp	Lower	Upper
83	10387		
85	61.1	44.9	83.3

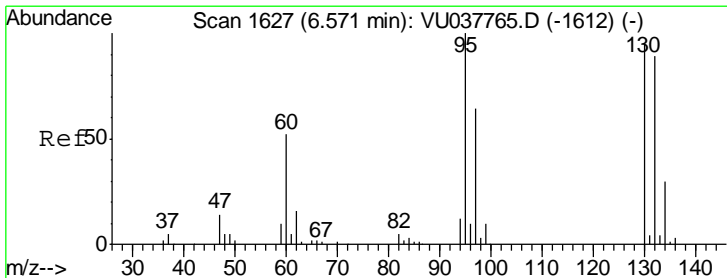
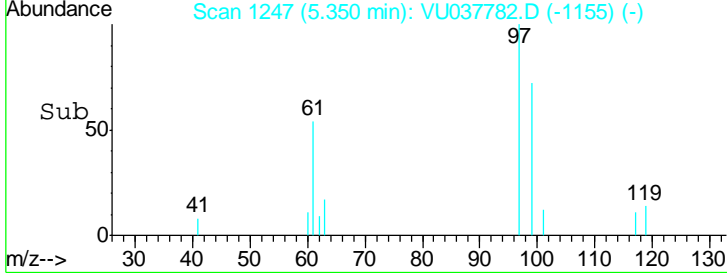
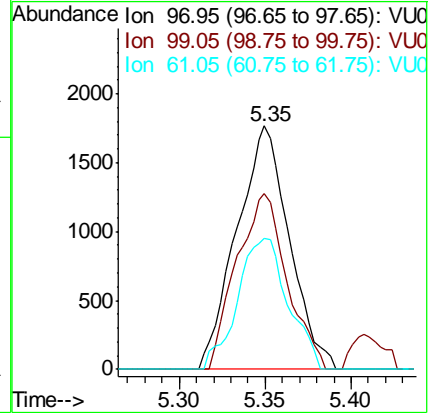
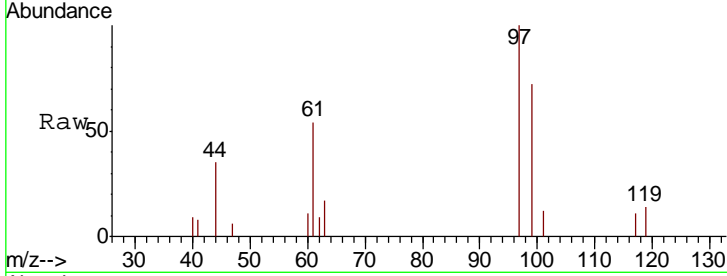




#29
 1,1,1-Trichloroethane
 Concen: 0.118 ug/L
 RT: 5.35 min Scan# 1247
 Delta R.T. -0.00 min
 Lab File: VU037782.D
 Acq: 17 Apr 2020 17:59

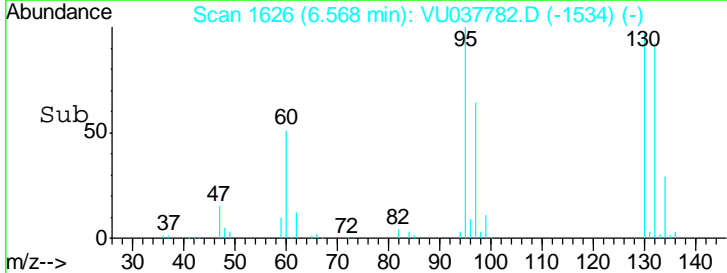
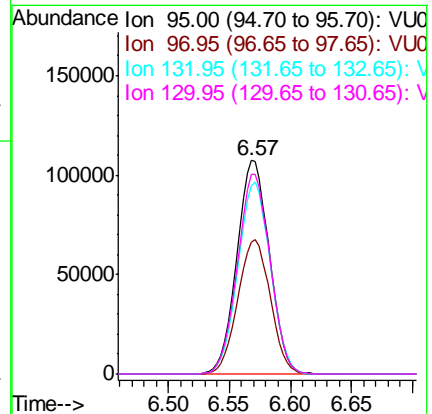
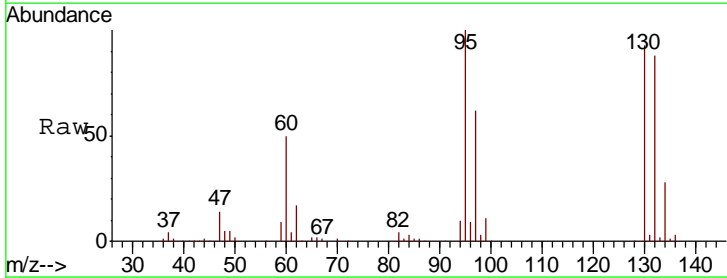
Instrument :
 MSVOA_U
 ClientSampled :

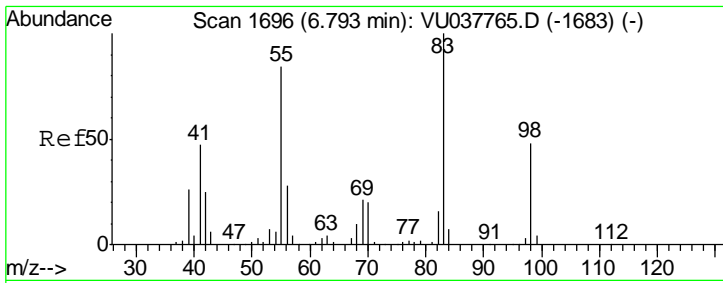
Tgt Ion	Resp	Lower	Upper
97	3758		
99	69.1	52.0	78.0
61	51.5	37.8	56.8



#34
 Trichloroethene
 Concen: 9.278 ug/L
 RT: 6.57 min Scan# 1626
 Delta R.T. -0.00 min
 Lab File: VU037782.D
 Acq: 17 Apr 2020 17:59

Tgt Ion	Resp	Lower	Upper
95	198482		
97	61.7	45.4	84.2
132	88.4	63.7	118.3
130	93.3	68.7	127.5

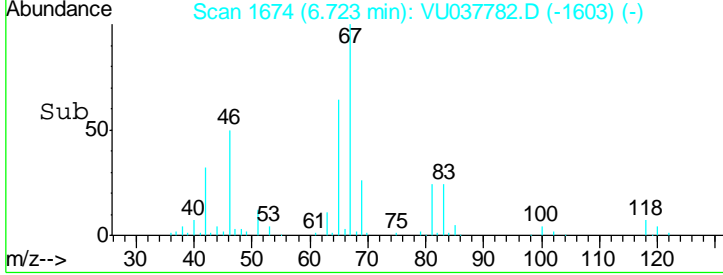
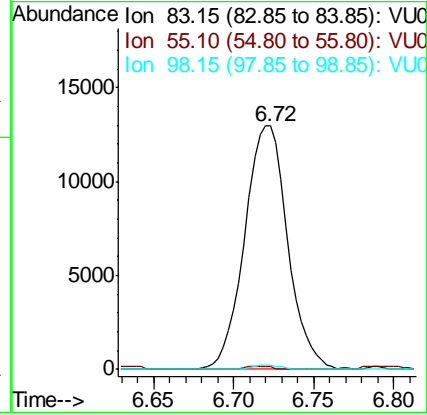
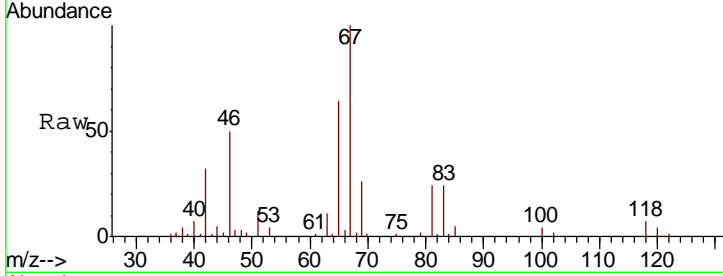




#35
 Methylcyclohexane
 Concen: 0.636 ug/L
 RT: 6.72 min Scan# 1674
 Delta R.T. -0.07 min
 Lab File: VU037782.D
 Acq: 17 Apr 2020 17:59

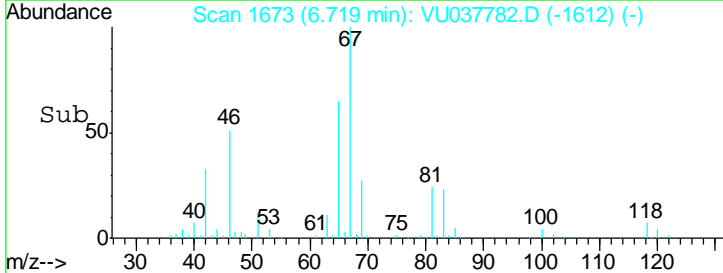
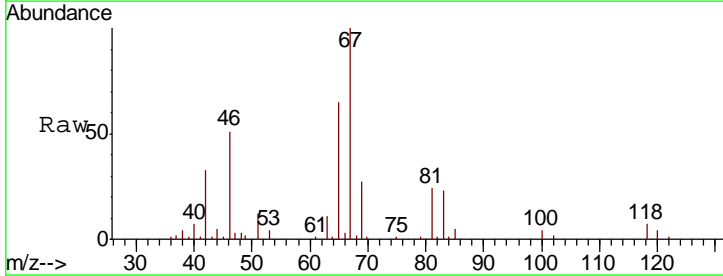
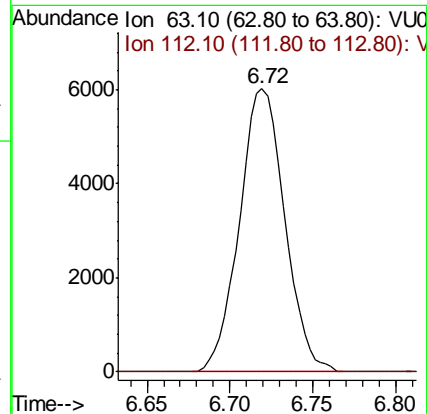
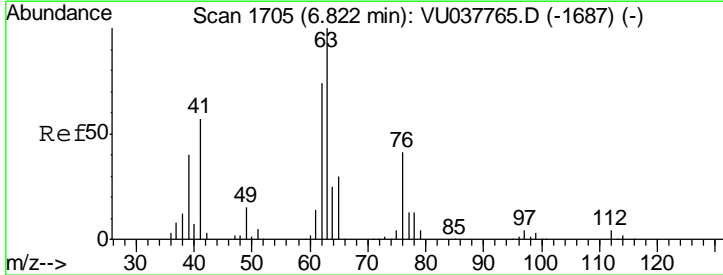
Instrument :
 MSVOA_U
 ClientSampled :

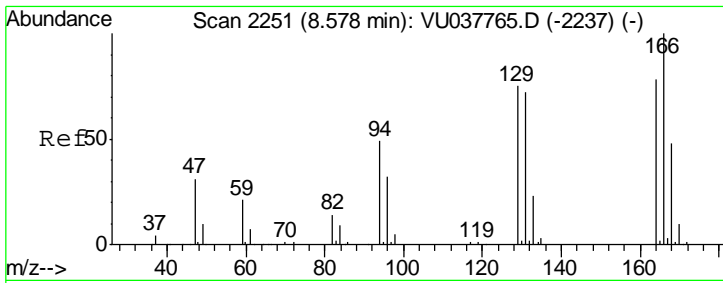
Tgt Ion	Resp	Lower	Upper
83	100		
55	0.7	65.5	98.3#
98	1.2	38.2	57.4#



#37
 1,2-Dichloropropane
 Concen: 0.496 ug/L
 RT: 6.72 min Scan# 1673
 Delta R.T. -0.10 min
 Lab File: VU037782.D
 Acq: 17 Apr 2020 17:59

Tgt Ion	Resp	Lower	Upper
63	100		
112	0.0	3.4	5.0#



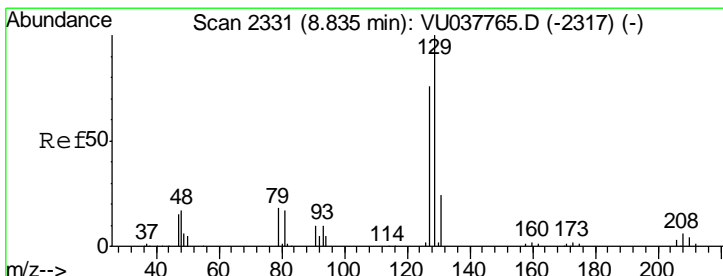
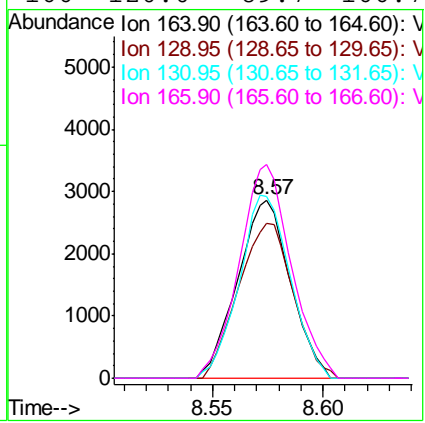
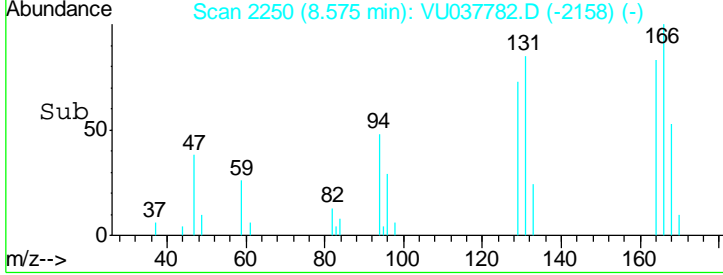
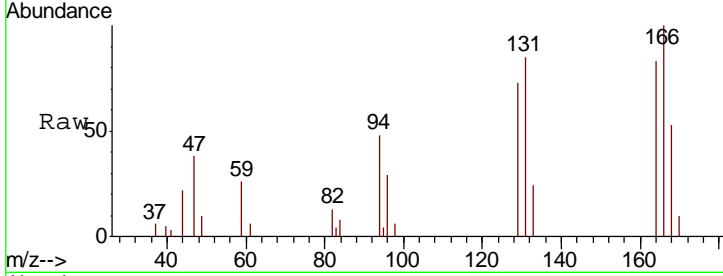


#47
 Tetrachloroethene
 Concen: 0.308 ug/L
 RT: 8.57 min Scan# 2250
 Delta R.T. -0.00 min
 Lab File: VU037782.D
 Acq: 17 Apr 2020 17:59

Instrument :
 MSVOA_U
 ClientSampled :

Tot Ion:164 Resp: 4737

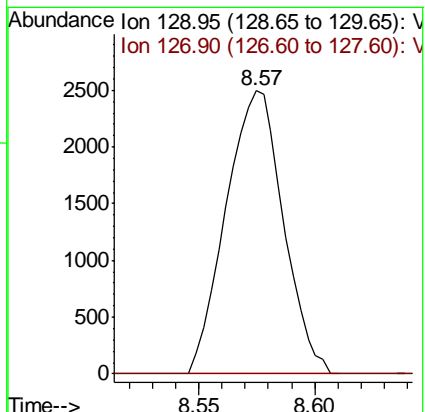
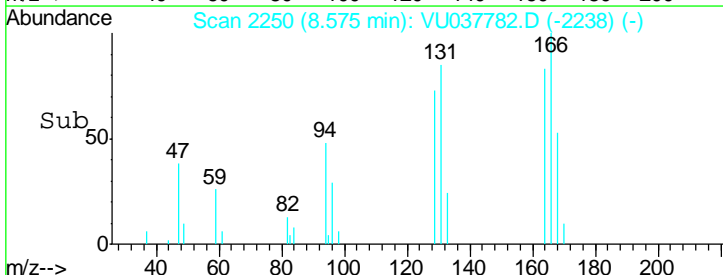
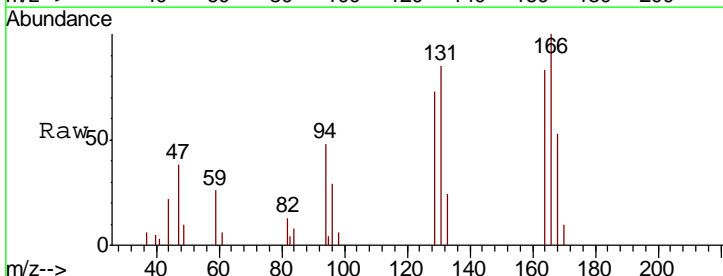
Ion	Ratio	Lower	Upper
164	100		
129	87.2	68.1	126.5
131	102.3	65.9	122.5
166	120.0	89.7	166.7

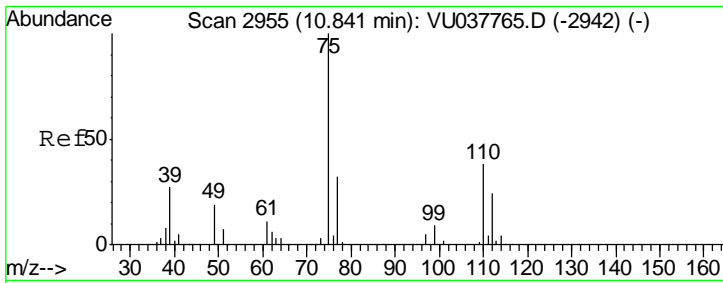


#49
 Dibromochloromethane
 Concen: 0.241 ug/L
 RT: 8.57 min Scan# 2250
 Delta R.T. -0.26 min
 Lab File: VU037782.D
 Acq: 17 Apr 2020 17:59

Tgt Ion:129 Resp: 4281

Ion	Ratio	Lower	Upper
129	100		
127	0.0	53.3	98.9#





#59
 1,2,3-Trichloropropane
 Concen: 1.326 ug/L
 RT: 11.83 min Scan# 3261
 Delta R.T. 0.98 min
 Lab File: VU037782.D
 Acq: 17 Apr 2020 17:59

Instrument :
 MSVOA_U
 ClientSampled :

Tot Ion: 75 Resp: 20034

Ion	Ratio	Lower	Upper
75	100		
77	34.9	25.4	38.2

