

Data Path : Z:\VOASRV\HPCHEM1\MSVOA U\DATA\VU041720\
 Data File : VU037790.D
 Acq On : 17 Apr 2020 23:01
 Operator : JC/MD
 Sample : L2319-02
 Misc : 25mL/MSVOA U/WATER
 ALS Vial : 1 Sample Multiplier: 1

Instrument :
 MSVOA_U
 ClientSampleID :
 C0AD4

Quant Time: Apr 18 06:20:18 2020
 Quant Method : Z:\VOASRV\HPCHEM1\MSVOA_U\METHOD\SOMUTR041420WMA.M
 Quant Title : TRACE VOA SOM01.0
 QLast Update : Sat Apr 18 05:19:30 2020
 Response via : Initial Calibration

Internal Standards	R.T.	QIon	Response	Conc	Units	Dev(Min)
1) 1,4-Difluorobenzene	6.28	114	270544	5.00	ug/L	0.00
28) Chlorobenzene-d5	9.44	117	261430	5.00	ug/L	0.00
60) 1,4-Dichlorobenzene-d4	11.83	152	127441	5.00	ug/L	0.00

System Monitoring Compounds

4) Vinyl Chloride-d3	1.61	65	80997	3.96	ug/L	0.00
Spiked Amount	5.000	Range	40 - 130	Recovery	=	79.20%
7) Chloroethane-d5	1.93	69	76953	4.45	ug/L	0.00
Spiked Amount	5.000	Range	65 - 130	Recovery	=	89.00%
11) 1,1-Dichloroethene-d2	2.60	63	478891	13.16	ug/L	0.00
Spiked Amount	5.000	Range	60 - 125	Recovery	=	263.20%#
20) 2-Butanone-d5	4.66	46	311362	55.38	ug/L	0.00
Spiked Amount	50.000	Range	40 - 130	Recovery	=	110.76%
24) Chloroform-d	5.10	84	157565	4.82	ug/L	0.00
Spiked Amount	5.000	Range	70 - 125	Recovery	=	96.40%
26) 1,2-Dichloroethane-d4	5.74	65	93829	4.99	ug/L	0.00
Spiked Amount	5.000	Range	70 - 130	Recovery	=	99.80%
32) Benzene-d6	5.76	84	322199	4.55	ug/L	0.00
Spiked Amount	5.000	Range	70 - 125	Recovery	=	91.00%
36) 1,2-Dichloropropane-d6	6.72	67	109560	4.77	ug/L	0.00
Spiked Amount	5.000	Range	60 - 140	Recovery	=	95.40%
41) Toluene-d8	7.92	98	287846	4.49	ug/L	0.00
Spiked Amount	5.000	Range	70 - 130	Recovery	=	89.80%
43) trans-1,3-Dichloropropene-	8.20	79	45970	4.45	ug/L	0.00
Spiked Amount	5.000	Range	55 - 130	Recovery	=	89.00%
46) 2-Hexanone-d5	8.65	63	269411	50.97	ug/L	0.00
Spiked Amount	50.000	Range	45 - 130	Recovery	=	101.94%
57) 1,1,2,2-Tetrachloroethane-	10.77	84	88733	4.89	ug/L	0.00
Spiked Amount	5.000	Range	65 - 120	Recovery	=	97.80%
64) 1,2-Dichlorobenzene-d4	12.21	152	106692	4.69	ug/L	0.00
Spiked Amount	5.000	Range	80 - 120	Recovery	=	93.80%

Target Compounds

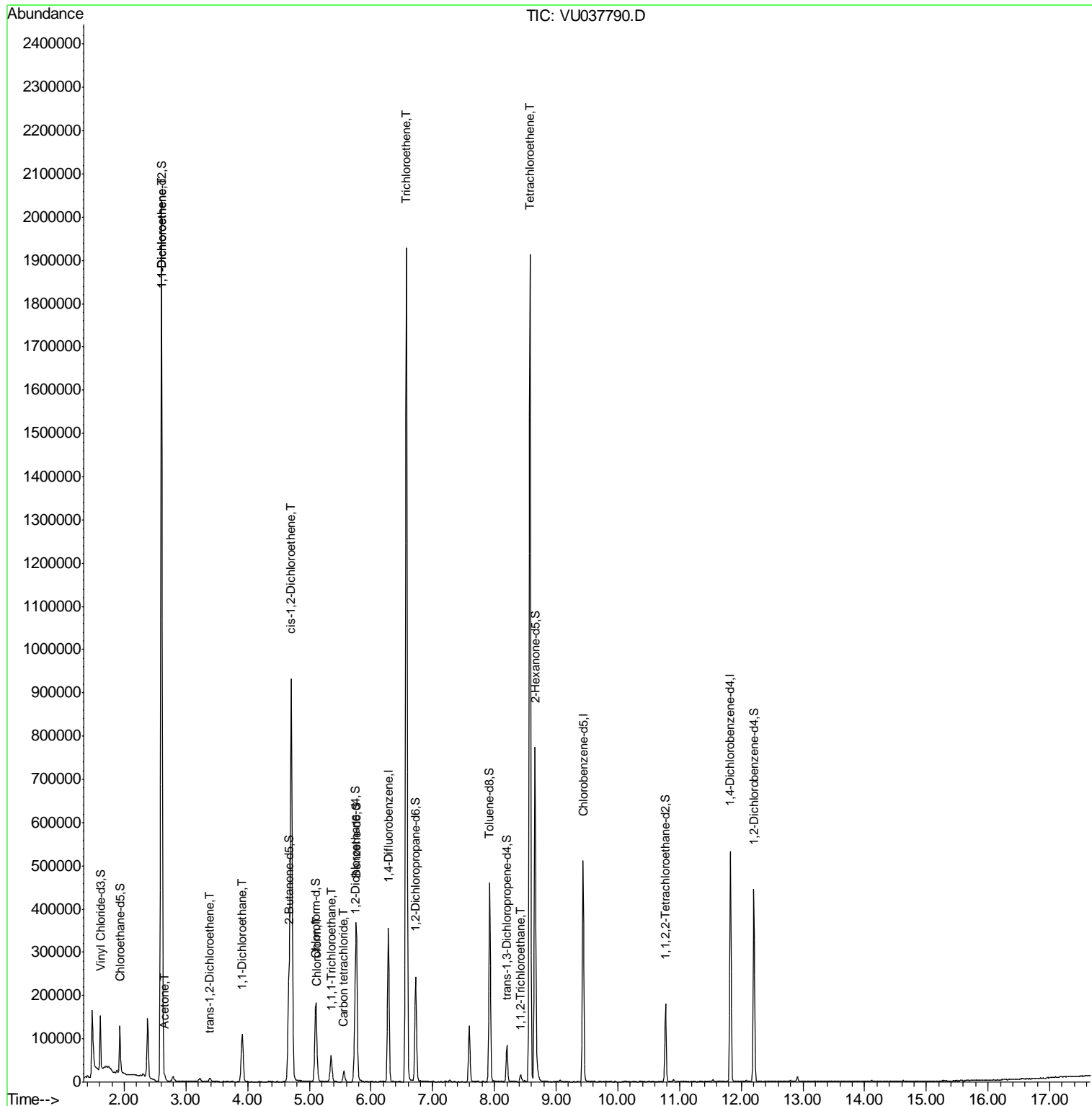
Target Compounds	R.T.	QIon	Response	Conc	Units	Ovalue
12) 1,1-Dichloroethene	2.60	96	616949	33.045	ug/L #	80
13) Acetone	2.66	43	11703	3.157	ug/L	100
18) trans-1,2-Dichloroethene	3.39	96	3281	0.162	ug/L	86
19) 1,1-Dichloroethane	3.91	63	127865	3.266	ug/L	99
22) cis-1,2-Dichloroethene	4.71	96	445154	20.355	ug/L	96
25) Chloroform	5.13	83	18433	0.496	ug/L	97
29) 1,1,1-Trichloroethane	5.35	97	42158	1.329	ug/L	98
31) Carbon tetrachloride	5.56	117	16207	0.641	ug/L	99
34) Trichloroethene	6.57	95	656309	30.918	ug/L	98
45) 1,1,2-Trichloroethane	8.42	97	5159	0.334	ug/L	95
47) Tetrachloroethene	8.57	164	404119	26.493	ug/L	99

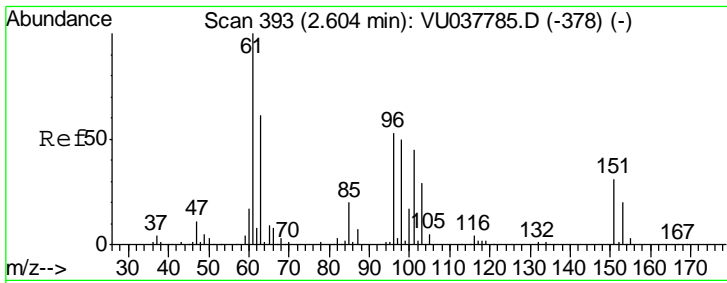
(#) = qualifier out of range (m) = manual integration (+) = signals summed

Data Path : Z:\VOASRV\HPCHEM1\MSVOA U\DATA\VU041720\
 Data File : VU037790.D
 Acq On : 17 Apr 2020 23:01
 Operator : JC/MD
 Sample : L2319-02
 Misc : 25mL/MSVOA U/WATER
 ALS Vial : 1 Sample Multiplier: 1

Instrument :
 MSVOA_U
 Client Sampled :
 C0AD4

Quant Time: Apr 18 06:20:18 2020
 Quant Method : Z:\VOASRV\HPCHEM1\MSVOA_U\METHOD\SOMUTR041420WMA.M
 Quant Title : TRACE VOA SOM01.0
 QLast Update : Sat Apr 18 05:19:30 2020
 Response via : Initial Calibration

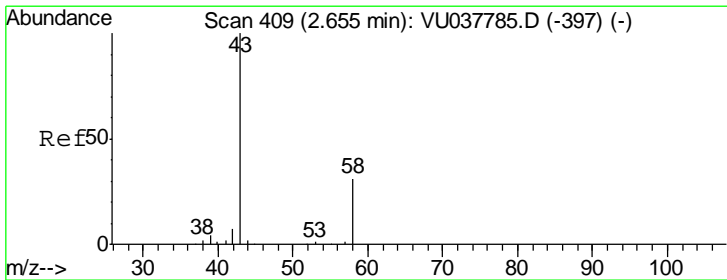
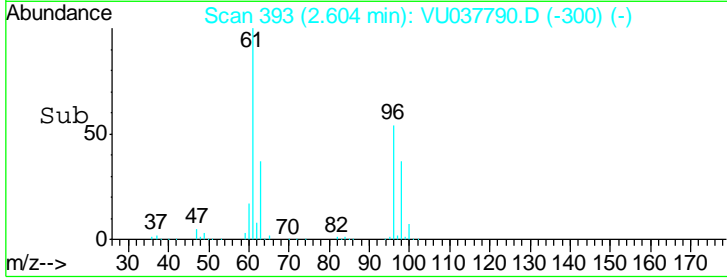
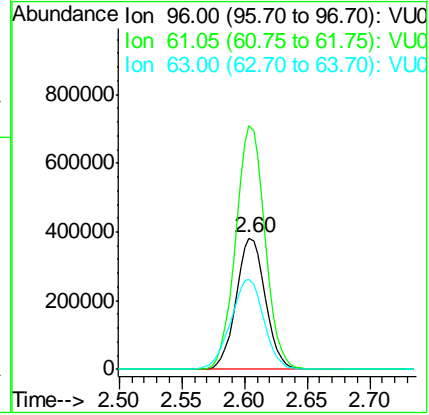
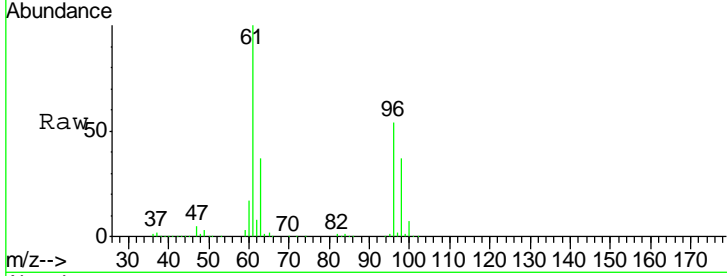




#12
 1,1-Dichloroethene
 Concen: 33.045 ug/L
 RT: 2.60 min Scan# 393
 Delta R.T. 0.00 min
 Lab File: VU037790.D
 Acq: 17 Apr 2020 23:01

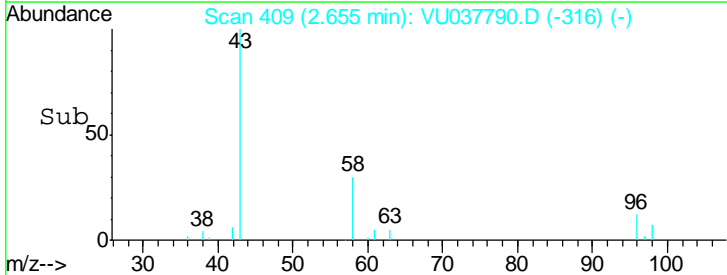
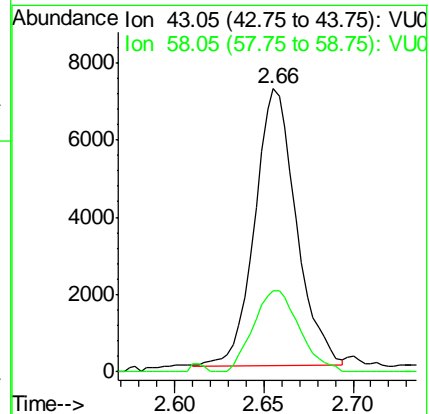
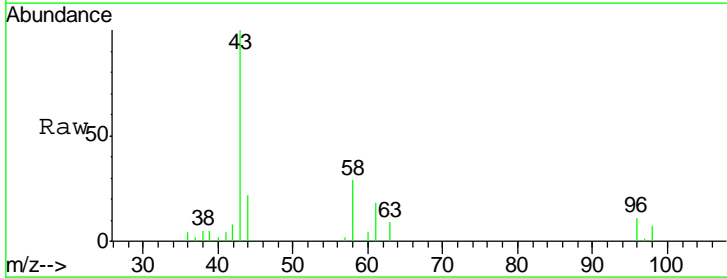
Instrument :
 MSVOA_U
 ClientSampled :
 C0AD4

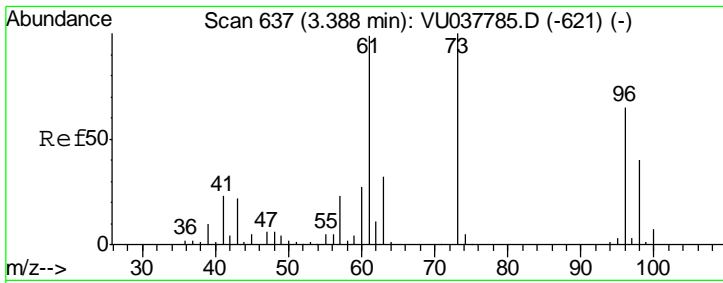
Tgt Ion: 96 Resp: 616949
 Ion Ratio Lower Upper
 96 100
 61 185.8 127.7 237.3
 63 69.0 85.0 157.8#



#13
 Acetone
 Concen: 3.157 ug/L
 RT: 2.66 min Scan# 409
 Delta R.T. 0.00 min
 Lab File: VU037790.D
 Acq: 17 Apr 2020 23:01

Tgt Ion: 43 Resp: 11703
 Ion Ratio Lower Upper
 43 100
 58 32.4 0.0 64.8

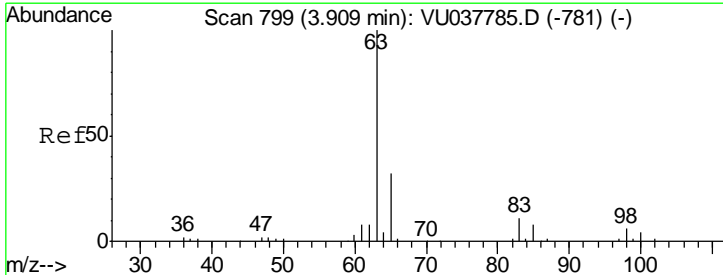
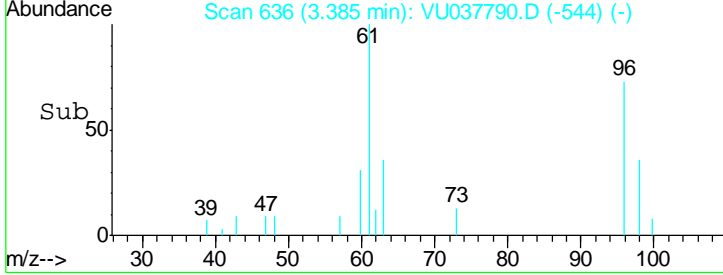
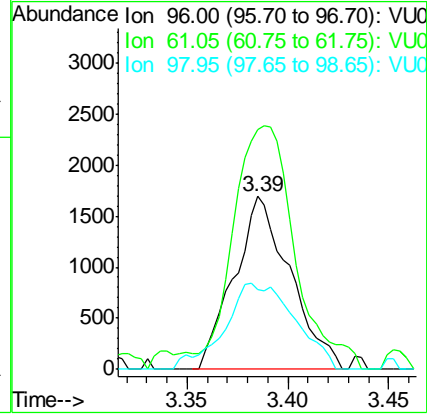
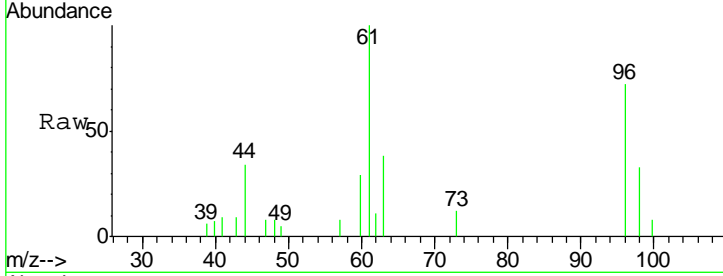




#18
 trans-1,2-Dichloroethene
 Concen: 0.162 ug/L
 RT: 3.39 min Scan# 636
 Delta R.T. -0.00 min
 Lab File: VU037790.D
 Acq: 17 Apr 2020 23:01

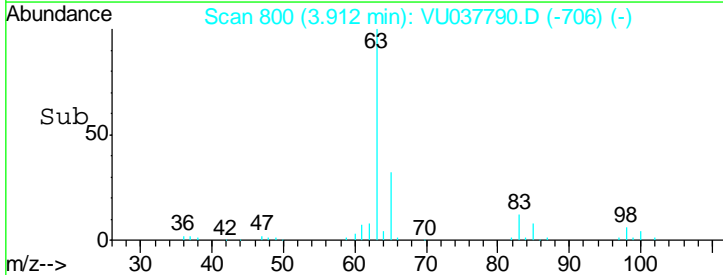
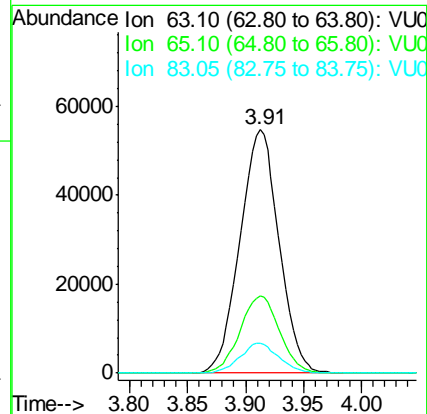
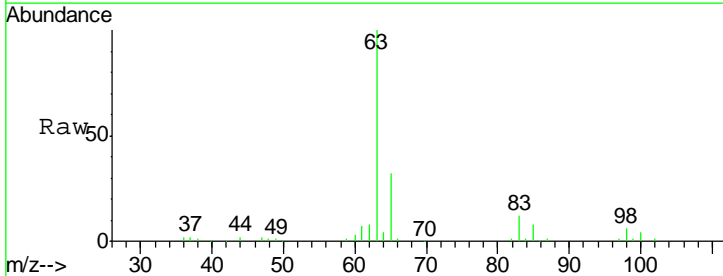
Instrument :
 MSVOA_U
ClientSampled :
 C0AD4

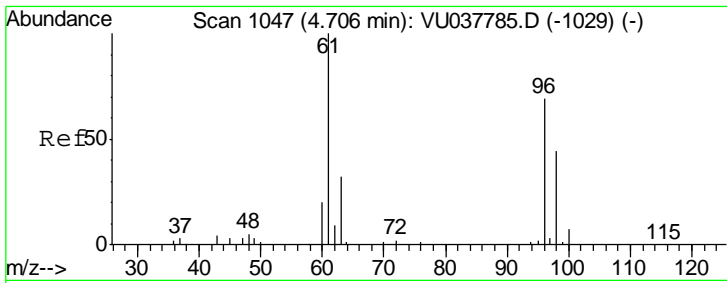
Tgt Ion	Resp	Lower	Upper
96	3281		
96	100		
61	139.1	106.7	198.3
98	45.9	44.3	82.3



#19
 1,1-Dichloroethane
 Concen: 3.266 ug/L
 RT: 3.91 min Scan# 800
 Delta R.T. 0.00 min
 Lab File: VU037790.D
 Acq: 17 Apr 2020 23:01

Tgt Ion	Resp	Lower	Upper
63	127865		
63	100		
65	31.8	21.6	40.2
83	12.4	8.6	16.0

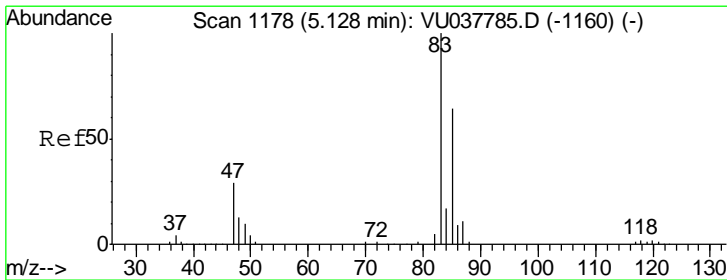
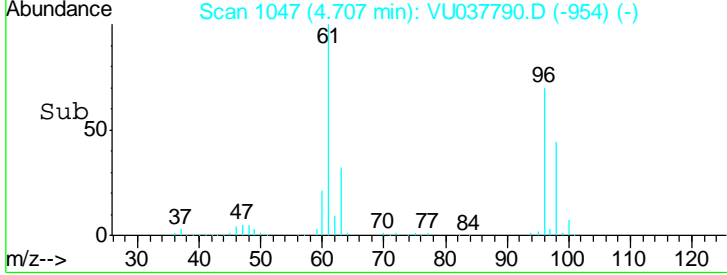
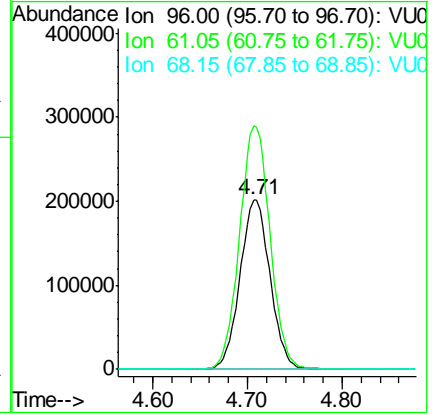
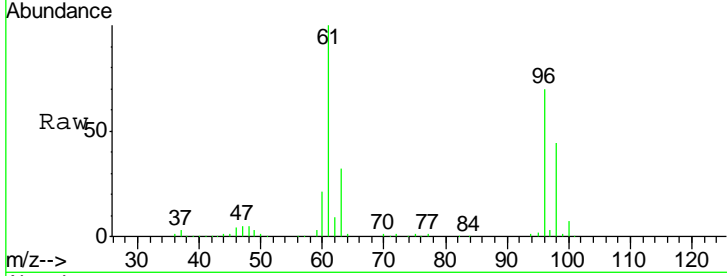




#22
 cis-1,2-Dichloroethene
 Concen: 20.355 ug/L
 RT: 4.71 min Scan# 1047
 Delta R.T. 0.00 min
 Lab File: VU037790.D
 Acq: 17 Apr 2020 23:01

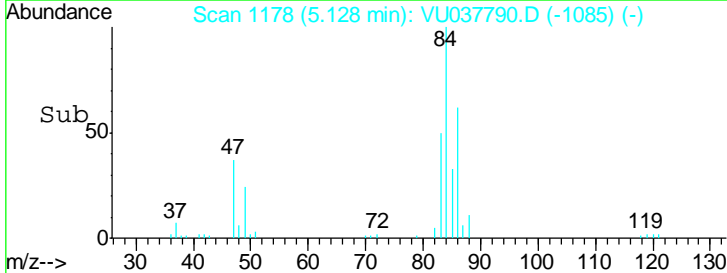
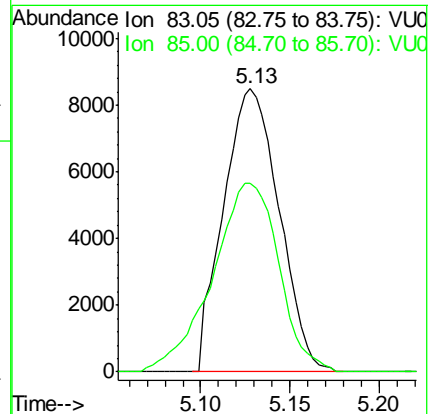
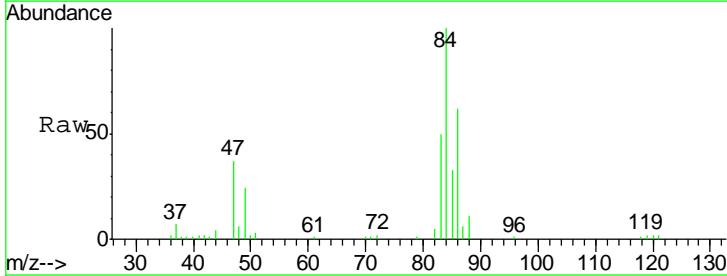
Instrument : MSVOA_U
 ClientSampled : C0AD4

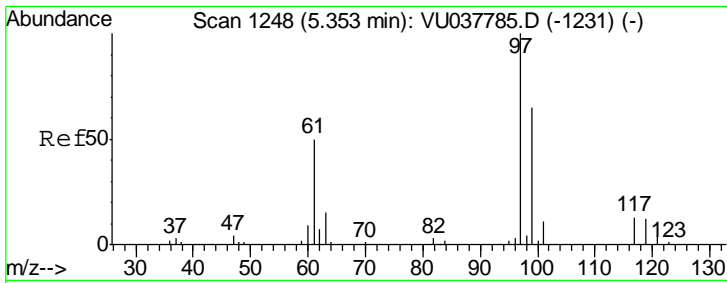
Tgt Ion	Resp	Lower	Upper
96	445154		
61	143.3	97.0	180.2
68	0.0	0.0	0.0



#25
 Chloroform
 Concen: 0.496 ug/L
 RT: 5.13 min Scan# 1178
 Delta R.T. 0.00 min
 Lab File: VU037790.D
 Acq: 17 Apr 2020 23:01

Tgt Ion	Resp	Lower	Upper
83	18433		
85	66.5	44.9	83.3

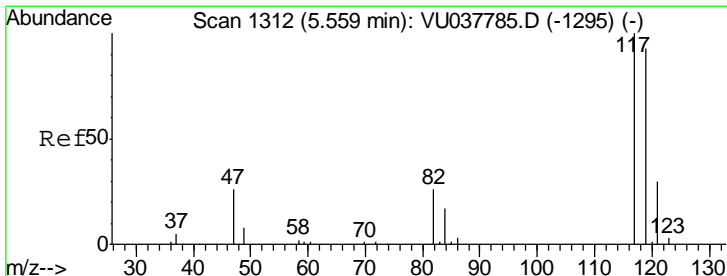
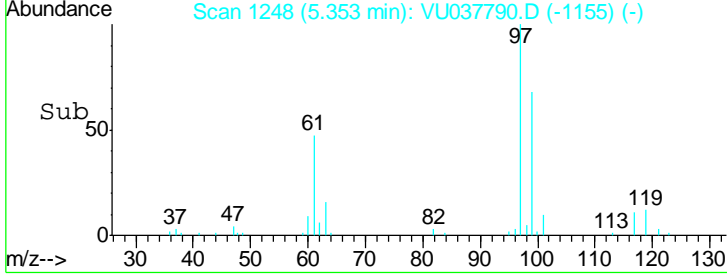
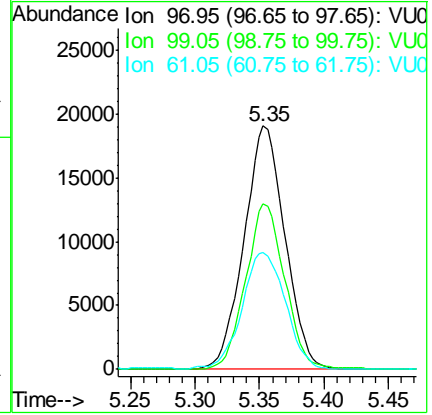
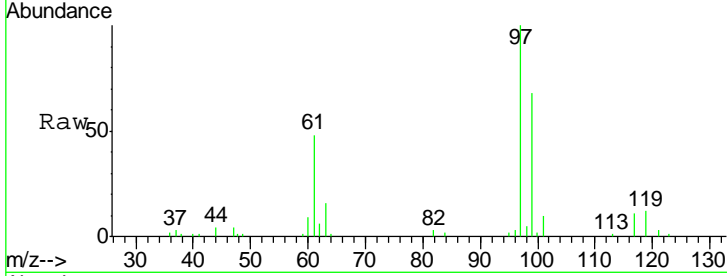




#29
 1,1,1-Trichloroethane
 Concen: 1.329 ug/L
 RT: 5.35 min Scan# 1248
 Delta R.T. 0.00 min
 Lab File: VU037790.D
 Acq: 17 Apr 2020 23:01

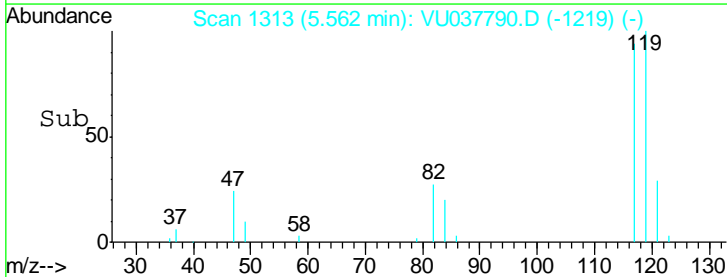
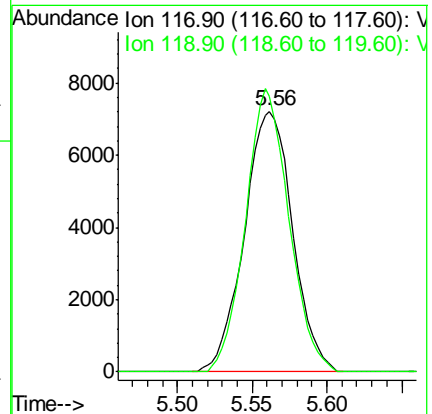
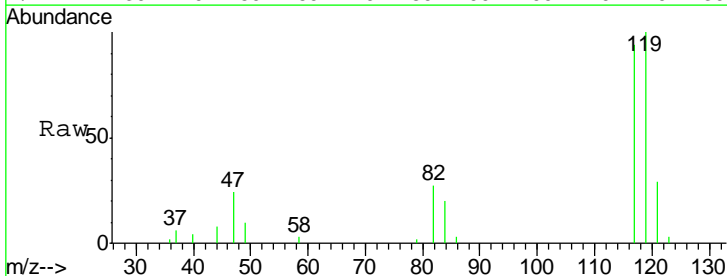
Instrument : MSVOA_U
 ClientSampled : C0AD4

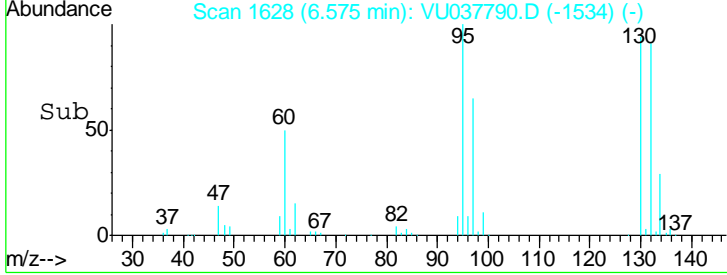
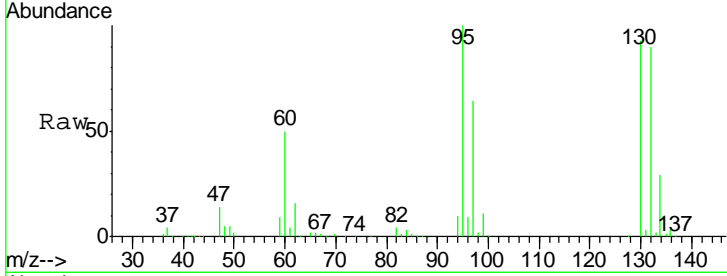
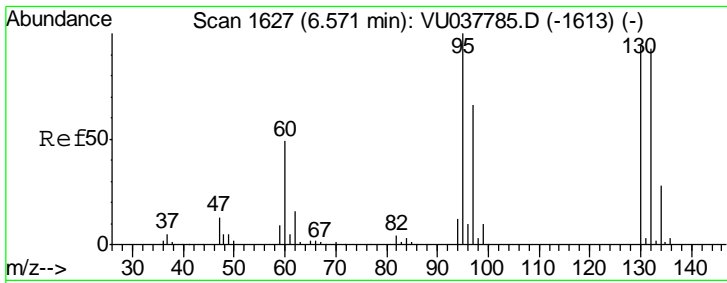
Tgt Ion	Resp	Lower	Upper
97	42158		
99	64.9	52.0	78.0
61	51.1	37.8	56.8



#31
 Carbon tetrachloride
 Concen: 0.641 ug/L
 RT: 5.56 min Scan# 1313
 Delta R.T. 0.00 min
 Lab File: VU037790.D
 Acq: 17 Apr 2020 23:01

Tgt Ion	Resp	Lower	Upper
117	16207		
119	97.7	77.4	116.0

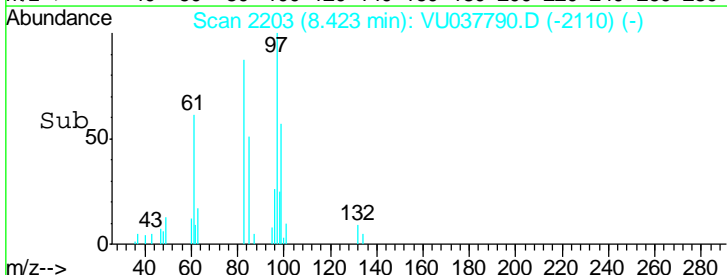
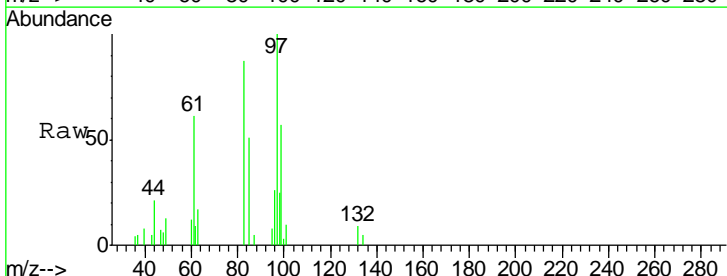
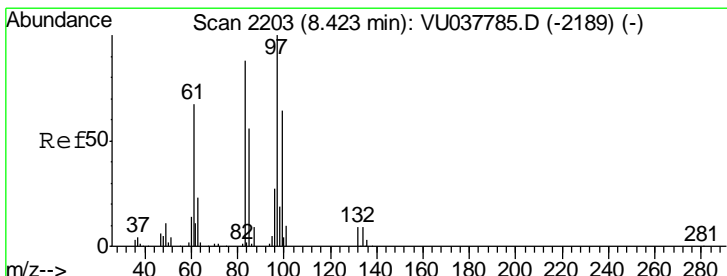
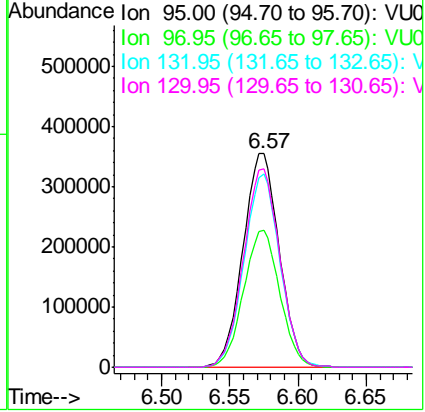




#34
 Trichloroethene
 Concen: 30.918 ug/L
 RT: 6.57 min Scan# 1628
 Delta R.T. 0.00 min
 Lab File: VU037790.D
 Acq: 17 Apr 2020 23:01

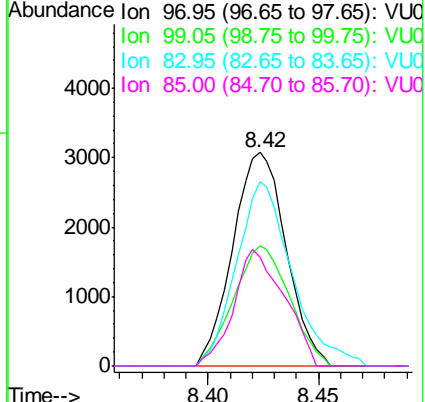
Instrument : MSVOA_U
 ClientSampled : C0AD4

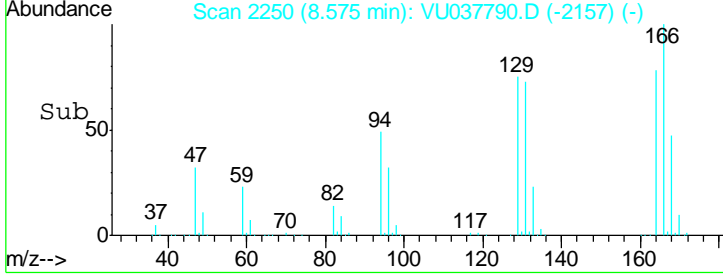
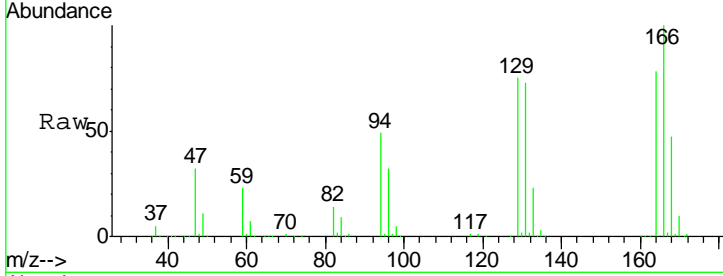
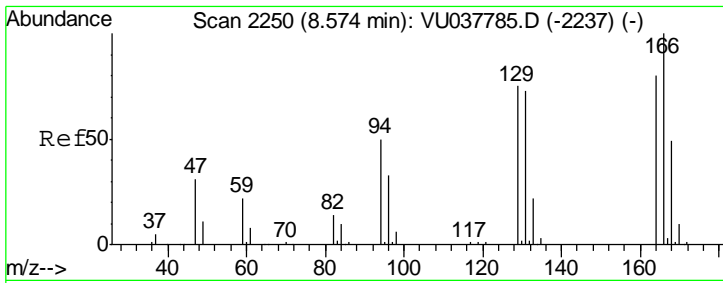
Tgt Ion	Resp	Lower	Upper
95	100		
97	64.3	45.4	84.2
132	90.4	63.7	118.3
130	92.7	68.7	127.5



#45
 1,1,2-Trichloroethane
 Concen: 0.334 ug/L
 RT: 8.42 min Scan# 2203
 Delta R.T. 0.00 min
 Lab File: VU037790.D
 Acq: 17 Apr 2020 23:01

Tgt Ion	Resp	Lower	Upper
97	100		
99	56.6	43.1	80.1
83	86.5	62.4	116.0
85	51.1	39.6	73.6





#47
 Tetrachloroethene
 Concen: 26.493 ug/L
 RT: 8.57 min Scan# 2250
 Delta R.T. 0.00 min
 Lab File: VU037790.D
 Acq: 17 Apr 2020 23:01

Instrument :
 MSVOA_U
 ClientSampleId :
 C0AD4

Tot Ion:164 Resp: 404119

Ion	Ratio	Lower	Upper
164	100		
129	96.0	68.1	126.5
131	94.3	65.9	122.5
166	128.7	89.7	166.7

