

Data Path : Z:\VOASRV\HPCHEM1\MSVOA U\DATA\VU041720\  
 Data File : VU037784.D  
 Acq On : 17 Apr 2020 18:48  
 Operator : JC/MD  
 Sample : L2292-11DL 20X  
 Misc : 25mL/MSVOA U/WATER  
 ALS Vial : 1 Sample Multiplier: 1

Instrument :  
 MSVOA\_U  
 ClientSampled :  
 BF8L5DL

Integration Parameters: rteint.p  
 Integrator: RTE  
 Smoothing : ON Filtering: 5  
 Sampling : 1 Min Area: 3 % of largest Peak  
 Start Thrs: 0.1 Max Peaks: 100  
 Stop Thrs : 0 Peak Location: TOP

If leading or trailing edge < 100 prefer < Baseline drop else tangent >  
 Peak separation: 5

Method : Z:\VOASRV\HPCHEM1\MSVOA\_U\METHOD\SOMUTR041420WMA.M  
 Title : TRACE VOA SOM01.0

Signal : TIC

peak #	R.T. min	first scan	max scan	last scan	PK TY	peak height	corr. area	corr. % max.	% of total
1	1.610	77	84	95	rBV	143194	152913	10.25%	1.393%
2	1.929	175	183	196	rVB	120729	155388	10.42%	1.415%
3	2.591	376	389	404	rBV	203232	327115	21.93%	2.979%
4	3.221	571	585	600	rBV	9730	22133	1.48%	0.202%
5	4.665	1016	1034	1061	rBV	242981	579315	38.85%	5.276%
6	5.102	1152	1170	1190	rBV	199393	429119	28.77%	3.908%
7	5.758	1351	1374	1398	rBV2	418126	1068581	71.65%	9.732%
8	6.279	1518	1536	1554	rBV	384892	720650	48.32%	6.563%
9	6.572	1612	1627	1646	rBV	638443	1178397	79.02%	10.732%
10	6.723	1658	1674	1694	rBV	274956	523591	35.11%	4.768%
11	7.591	1928	1944	1961	rBV	150148	261800	17.55%	2.384%
12	7.922	2033	2047	2064	rBV	528171	898588	60.25%	8.183%
13	8.202	2122	2134	2150	rBV	97308	162511	10.90%	1.480%
14	8.575	2239	2250	2261	rVB3	24610	40390	2.71%	0.368%
15	8.655	2261	2275	2306	rBV	856732	1491350	100.00%	13.582%
16	9.436	2504	2518	2538	rBV	548828	903128	60.56%	8.225%
17	10.774	2920	2934	2951	rBV	204035	326263	21.88%	2.971%
18	11.825	3249	3261	3280	rVB	592238	922894	61.88%	8.405%
19	12.205	3366	3379	3394	rBV	508148	816382	54.74%	7.435%

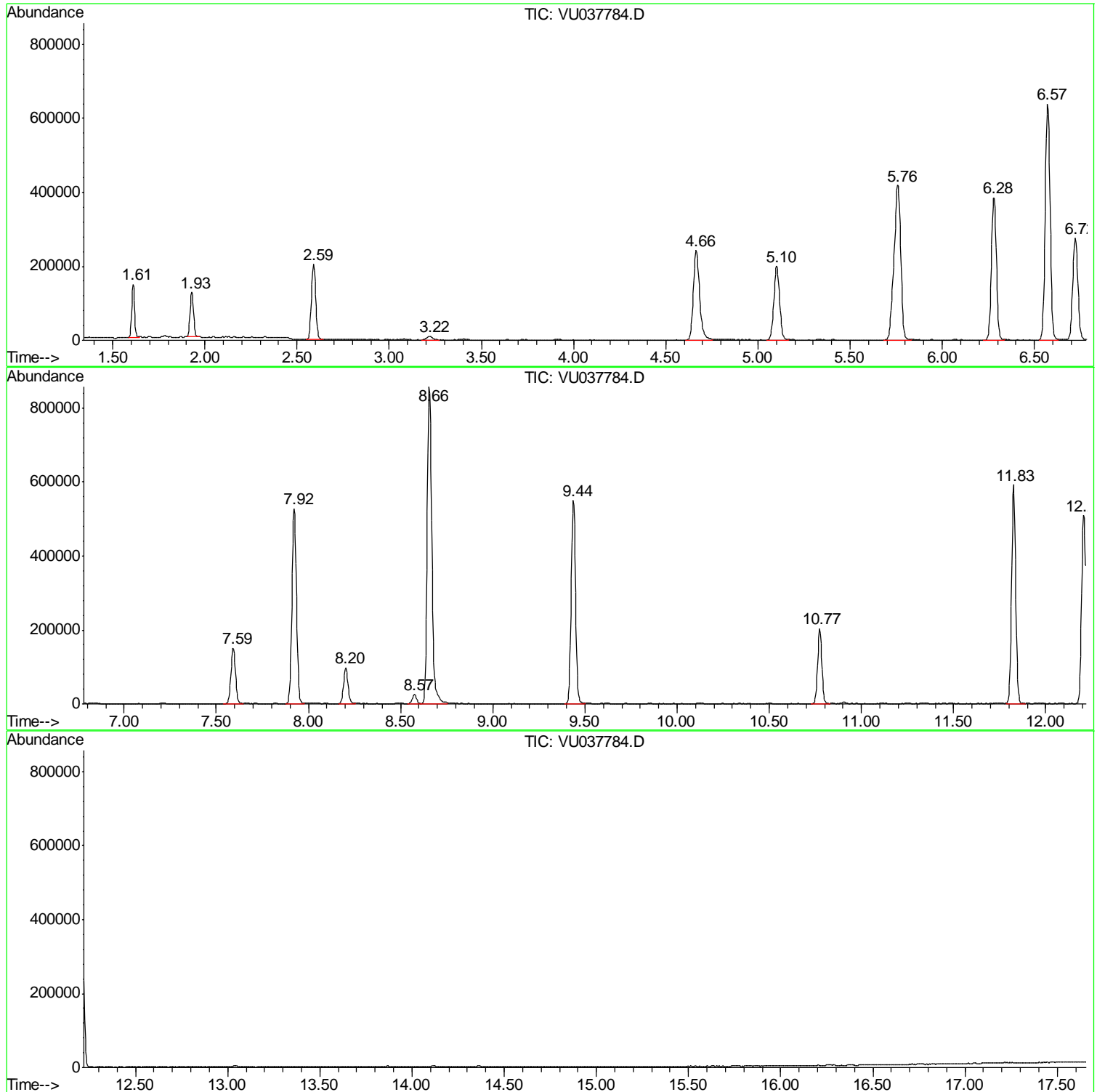
Sum of corrected areas: 10980508

Data Path : Z:\VOASRV\HPCHEM1\MSVOA U\DATA\VU041720\  
Data File : VU037784.D  
Acq On : 17 Apr 2020 18:48  
Operator : JC/MD  
Sample : L2292-11DL 20X  
Misc : 25mL/MSVOA U/WATER  
ALS Vial : 1 Sample Multiplier: 1

Instrument :  
MSVOA\_U  
ClientSampled :  
BF8L5DL

Quant Method : Z:\VOASRV\HPCHEM1\MSVOA\_U\METHOD\SOMUTR041420WMA.M  
Quant Title : TRACE VOA SOM01.0

TIC Library : C:\DATABASE\NIST11.L  
TIC Integration Parameters: LSCINT.P



Data Path : Z:\VOASRV\HPCHEM1\MSVOA\_U\DATA\VU041720\  
Data File : VU037784.D  
Acq On : 17 Apr 2020 18:48  
Operator : JC/MD  
Sample : L2292-11DL 20X  
Misc : 25mL/MSVOA\_U/WATER  
ALS Vial : 1 Sample Multiplier: 1

Instrument :  
MSVOA\_U  
ClientSampleId :  
BF8L5DL

Quant Method : Z:\VOASRV\HPCHEM1\MSVOA\_U\METHOD\SOMUTR041420WMA.M  
Quant Title : TRACE VOA SOM01.0

TIC Library : C:\DATABASE\NIST11.L  
TIC Integration Parameters: LSCINT.P

No Library Search Compounds Detected

\*\*\*\*\*

Data Path : Z:\VOASRV\HPCHEM1\MSVOA\_U\DATA\VU041720\  
Data File : VU037784.D  
Acq On : 17 Apr 2020 18:48  
Operator : JC/MD  
Sample : L2292-11DL 20X  
Misc : 25mL/MSVOA\_U/WATER  
ALS Vial : 1 Sample Multiplier: 1

Instrument :  
MSVOA\_U  
ClientSampleId :  
BF8L5DL

Quant Method : Z:\VOASRV\HPCHEM1\MSVOA\_U\METHOD\SOMUTR041420WMA.M  
Quant Title : TRACE VOA SOM01.0

TIC Library : C:\DATABASE\NIST11.L  
TIC Integration Parameters: LSCINT.P

TIC Top Hit name	RT	EstConc	Units	Response	--Internal Standard--			
					#	RT	Resp	Conc

---