

Data Path : Z:\voasrv\HPCHEM1\MSVOA_U\Data\VU041724\
 Data File : VU058742.D
 Acq On : 17 Apr 2024 18:04
 Operator : MD/SY
 Sample : P2058-17
 Misc : 25.0mL/MSVOA_U/WATER
 ALS Vial : 14 Sample Multiplier: 1

Instrument :
 MSVOA_U
ClientSampleId :

Quant Time: Apr 18 05:07:30 2024
 Quant Method : Z:\voasrv\HPCHEM1\MSVOA_U\Method\SFAMUTRO40424WMA.M
 Quant Title : TRACE VOA SFAM1.0
 QLast Update : Thu Apr 18 05:04:53 2024
 Response via : Initial Calibration

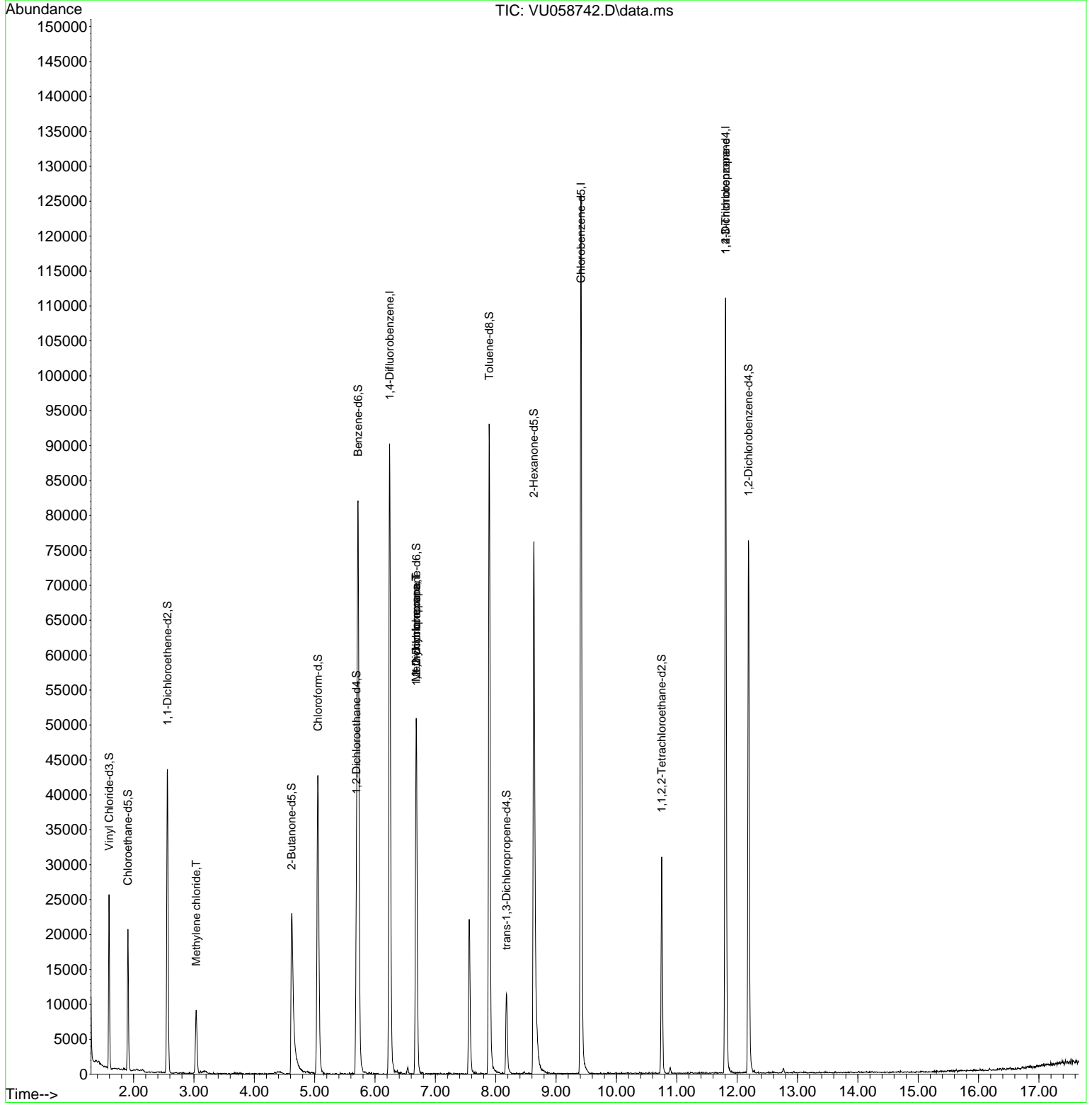
Compound	R. T.	QI on	Response	Conc	Units	Dev(Min)
Internal Standards						
1) 1,4-Difluorobenzene	6.242	114	71692	5.000	ug/L	0.00
28) Chlorobenzene-d5	9.412	117	69217	5.000	ug/L	0.00
58) 1,4-Dichlorobenzene-d4	11.807	152	29395	5.000	ug/L	0.00
System Monitoring Compounds						
4) Vinyl Chloride-d3	1.592	65	17351	3.656	ug/L	0.00
Spike Amount	5.000	Range	40 - 130	Recovery	=	73.200%
7) Chloroethane-d5	1.904	69	13796	3.345	ug/L	0.00
Spike Amount	5.000	Range	65 - 130	Recovery	=	66.800%
11) 1,1-Dichloroethane-d2	2.560	65	8586	3.997	ug/L	0.00
Spike Amount	5.000	Range	60 - 125	Recovery	=	80.000%
20) 2-Butanone-d5	4.618	46	41648	41.637	ug/L	0.00
Spike Amount	50.000	Range	40 - 130	Recovery	=	83.280%
24) Chloroform-d	5.052	84	40505	4.275	ug/L	0.00
Spike Amount	5.000	Range	70 - 125	Recovery	=	85.400%
26) 1,2-Dichloroethane-d4	5.692	65	21089	4.769	ug/L	0.00
Spike Amount	5.000	Range	70 - 130	Recovery	=	95.400%
32) Benzene-d6	5.718	84	76779	4.120	ug/L	0.00
Spike Amount	5.000	Range	70 - 125	Recovery	=	82.400%
36) 1,2-Dichloropropane-d6	6.682	67	24672	4.222	ug/L	0.00
Spike Amount	5.000	Range	60 - 140	Recovery	=	84.400%
41) Toluene-d8	7.891	98	62396	3.776	ug/L	0.00
Spike Amount	5.000	Range	70 - 130	Recovery	=	75.600%
43) trans-1,3-Dichloroprop...	8.177	79	8170	4.504	ug/L	0.00
Spike Amount	5.000	Range	55 - 130	Recovery	=	90.000%
46) 2-Hexanone-d5	8.631	63	28228	37.727	ug/L	0.00
Spike Amount	50.000	Range	45 - 130	Recovery	=	75.460%
56) 1,1,2,2-Tetrachloroeth...	10.750	84	15893	3.852	ug/L	0.00
Spike Amount	5.000	Range	65 - 120	Recovery	=	77.000%
66) 1,2-Dichlorobenzene-d4	12.187	152	20261	4.092	ug/L	0.00
Spike Amount	5.000	Range	80 - 120	Recovery	=	81.800%
Target Compounds						
16) Methylene chloride	3.036	84	4184	0.620	ug/L	93
35) Methylcyclohexane	6.679	83	5727	0.601	ug/L #	16
37) 1,2-Dichloropropane	6.685	63	2729	0.413	ug/L #	90
61) 1,2,3-Trichloropropane	11.807	75	3888	1.296	ug/L #	68

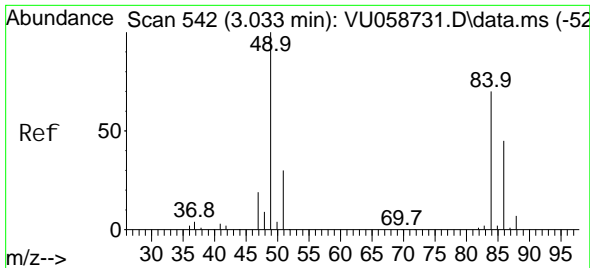
(#) = qualifier out of range (m) = manual integration (+) = signals summed

Data Path : Z:\voasrv\HPCHEM1\MSVOA_U\Data\VU041724\
 Data File : VU058742.D
 Acq On : 17 Apr 2024 18:04
 Operator : MD/SY
 Sample : P2058-17
 Misc : 25.0mL/MSVOA_U/WATER
 ALS Vial : 14 Sample Multiplier: 1

Instrument :
 MSVOA_U
ClientSampleId :

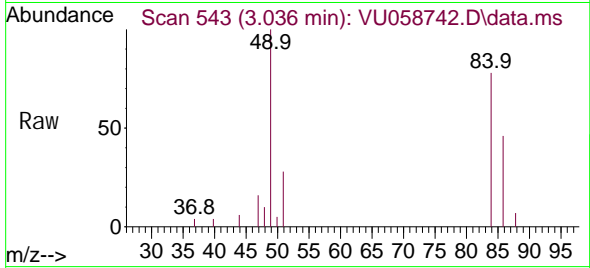
Quant Time: Apr 18 05:07:30 2024
 Quant Method : Z:\voasrv\HPCHEM1\MSVOA_U\Method\SFAMUTR040424WMA.M
 Quant Title : TRACE VOA SFAM1.0
 QLast Update : Thu Apr 18 05:04:53 2024
 Response via : Initial Calibration





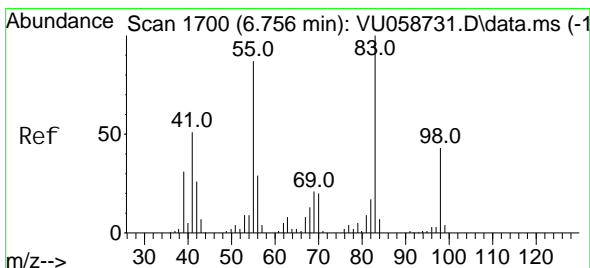
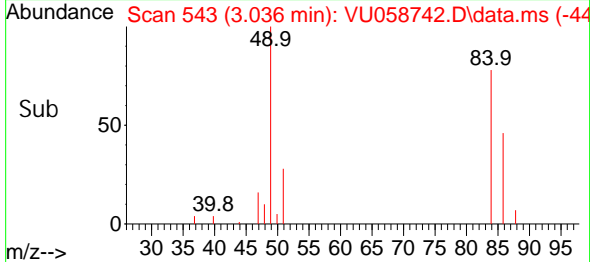
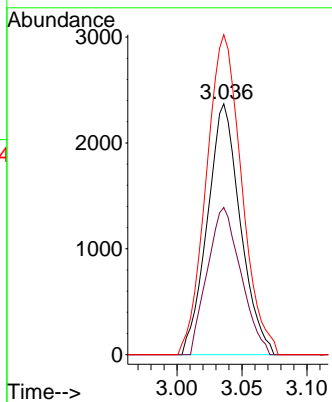
#16
 Methylene chl ori de
 Concen: 0.620 ug/L
 RT: 3.036 min Scan# 54
 Delta R.T. 0.003 min
 Lab File: VU058742.D
 Acq: 17 Apr 2024 18:04

Instrument :
 MSVOA_U
 ClientSampleId :



Tgt Ion: 84 Resp: 4184

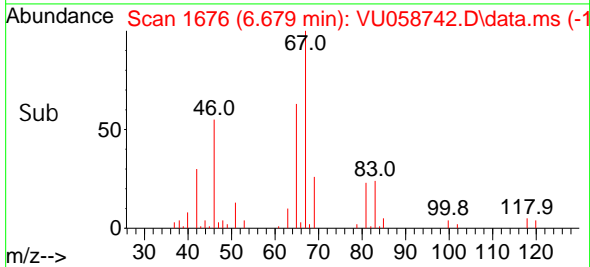
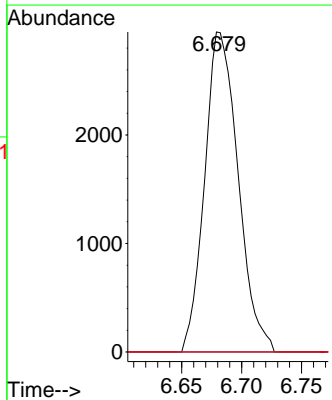
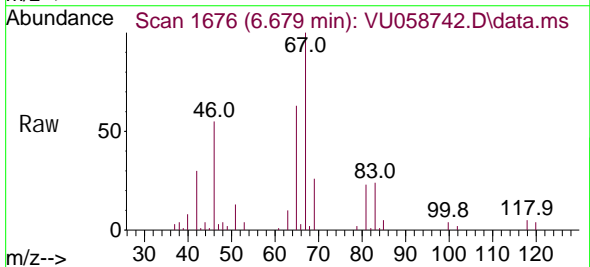
Ion	Ratio	Lower	Upper
84	100		
86	58.6	44.3	82.3
49	127.6	96.0	178.2

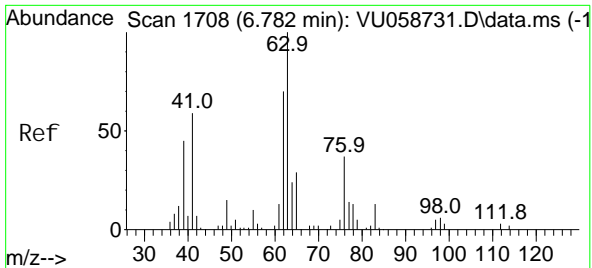


#35
 Methyl cycl ohexane
 Concen: 0.601 ug/L
 RT: 6.679 min Scan# 1676
 Delta R.T. -0.077 min
 Lab File: VU058742.D
 Acq: 17 Apr 2024 18:04

Tgt Ion: 83 Resp: 5727

Ion	Ratio	Lower	Upper
83	100		
55	0.0	66.2	99.4#
98	0.0	34.6	52.0#

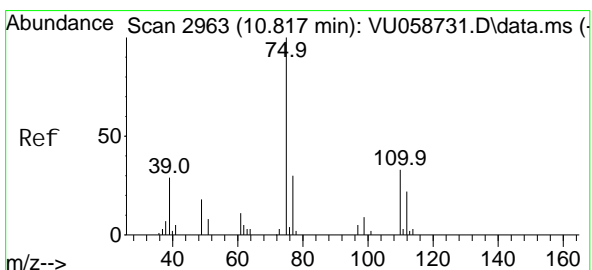
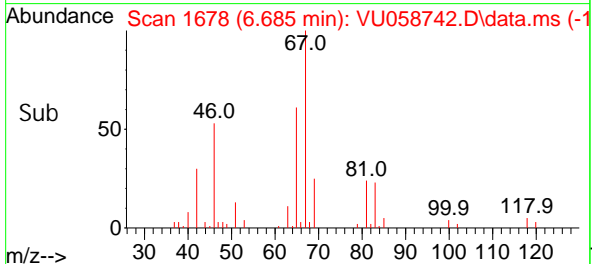
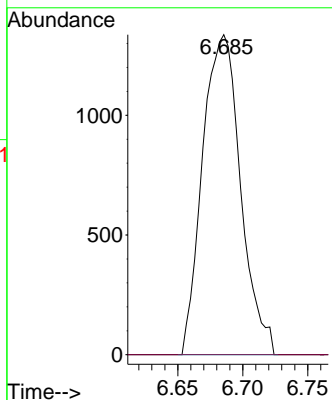
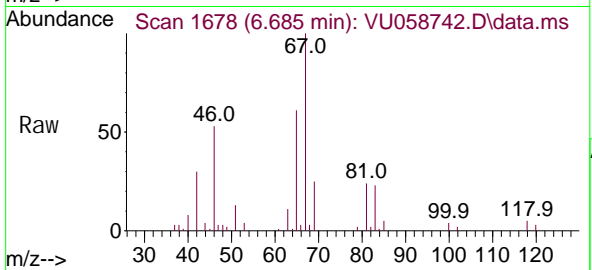




#37
 1, 2-Di chl oropropane
 Concen: 0.413 ug/L
 RT: 6.685 min Scan# 10
 Del ta R. T. -0.096 min
 Lab File: VU058742.D
 Acq: 17 Apr 2024 18:04

Instrument :
 MSVOA_U
 ClientSampleId :

Tgt Ion: 63 Resp: 2729
 Ion Ratio Lower Upper
 63 100
 112 0.0 2.6 4.0#



#61
 1, 2, 3-Tri chl oropropane
 Concen: 1.296 ug/L
 RT: 11.807 min Scan# 3271
 Del ta R. T. 0.990 min
 Lab File: VU058742.D
 Acq: 17 Apr 2024 18:04

Tgt Ion: 75 Resp: 3888
 Ion Ratio Lower Upper
 75 100
 110 0.0 25.8 38.6#
 77 34.7 25.1 37.7

