

Data Path : Z:\voasrv\HPCHEM1\MSVOA_U\Data\VU041822\
 Data File : VU048113.D
 Acq On : 18 Apr 2022 12:12
 Operator : SY/MD
 Sample : N2387-06DL 10X
 Misc : 5.0mL/MSVOA_U/WATER
 ALS Vial : 6 Sample Multiplier: 1

Instrument :
 MSVOA_U
 ClientSampleId :
 C0J63DL

Integration Parameters: LSCINT.P

Integrator: RTE
 Smoothing : OFF Filtering: 5
 Sampling : 1 Min Area: 0 % of largest Peak
 Start Thrs: 0.2 Max Peaks: 100
 Stop Thrs : 0 Peak Location: TOP

If leading or trailing edge < 100 prefer < Baseline drop else tangent >
 Peak separation: 5

Method : Z:\voasrv\HPCHEM1\MSVOA_U\Method\SFAMULM032422WMA.M
 Title : VOC Analysis

Signal : TIC: VU048113.D\data.ms

peak #	R.T. min	first scan	max scan	last scan	PK TY	peak height	corr. area	corr. % max.	% of total
1	1.600	73	81	96	rBV	168503	203920	11.45%	1.802%
2	1.916	170	179	199	rBV	126472	175460	9.86%	1.550%
3	2.571	370	383	398	rBV	274792	454662	25.54%	4.017%
4	2.684	416	418	422	rVB2	540	347	0.02%	0.003%
5	2.716	424	428	429	rBV2	295	191	0.01%	0.002%
6	2.777	434	447	464	rVV2	7678	19624	1.10%	0.173%
7	2.838	464	466	471	rVB4	514	356	0.02%	0.003%
8	2.870	473	476	479	rBV3	374	320	0.02%	0.003%
9	2.964	500	505	512	rVB3	601	846	0.05%	0.007%
10	3.051	520	532	546	rBV	13412	25884	1.45%	0.229%
11	3.195	565	577	584	rVB4	1065	1773	0.10%	0.016%
12	3.314	610	614	618	rBV2	186	198	0.01%	0.002%
13	3.366	627	630	635	rBV3	336	245	0.01%	0.002%
14	3.398	635	640	641	rBV	269	190	0.01%	0.002%
15	3.459	656	659	662	rBV2	302	202	0.01%	0.002%
16	3.626	708	711	714	rBV	247	179	0.01%	0.002%
17	3.719	737	740	742	rBV	248	189	0.01%	0.002%
18	3.787	759	761	765	rBV2	344	211	0.01%	0.002%
19	3.890	789	793	799	rVB2	249	244	0.01%	0.002%
20	3.928	802	805	809	rBV2	294	186	0.01%	0.002%
21	3.954	809	813	816	rBV2	263	196	0.01%	0.002%
22	4.054	841	844	851	rVB	202	192	0.01%	0.002%
23	4.118	861	864	865	rBV	378	197	0.01%	0.002%
24	4.131	866	868	871	rVB2	408	220	0.01%	0.002%
25	4.153	871	875	879	rBV2	244	289	0.02%	0.003%
26	4.523	986	990	991	rBV	281	182	0.01%	0.002%
27	4.552	995	999	1000	rBV	496	324	0.02%	0.003%
28	4.626	1008	1022	1051	rBV	125774	319637	17.95%	2.824%
29	4.919	1107	1113	1117	rBV3	342	451	0.03%	0.004%
30	4.977	1128	1131	1135	rVB2	260	237	0.01%	0.002%
31	5.067	1142	1159	1184	rBV	226501	497744	27.96%	4.398%
32	5.266	1218	1221	1223	rVV2	299	199	0.01%	0.002%
33	5.288	1223	1228	1238	rVB3	759	1122	0.06%	0.010%
34	5.726	1343	1364	1392	rBV2	453982	1240670	69.69%	10.962%
35	5.938	1428	1430	1435	rVB2	288	170	0.01%	0.002%
36	6.038	1459	1461	1464	rVV3	270	190	0.01%	0.002%

Data Path : Z:\voasrv\HPCHEM1\MSVOA_U\Data\VU041822\
 Data File : VU048113.D
 Acq On : 18 Apr 2022 12:12
 Operator : SY/MD
 Sample : N2387-06DL 10X
 Misc : 5.0mL/MSVOA_U/WATER
 ALS Vial : 6 Sample Multiplier: 1

Instrument :
 MSVOA_U
 ClientSampleId :
 C0J63DL

Integration Parameters: LSCINT.P

Integrator: RTE
 Smoothing : OFF
 Sampling : 1
 Start Thrs: 0.2
 Stop Thrs : 0

Filtering: 5
 Min Area: 0 % of largest Peak
 Max Peaks: 100
 Peak Location: TOP

If leading or trailing edge < 100 prefer < Baseline drop else tangent >
 Peak separation: 5

Method : Z:\voasrv\HPCHEM1\MSVOA_U\Method\SFAMULM032422WMA.M
 Title : VOC Analysis

37	6.070	1467	1471	1474	rBV2	563	490	0.03%	0.004%
38	6.250	1513	1527	1552	rBV	400865	769405	43.22%	6.798%
39	6.446	1585	1588	1590	rBV2	303	240	0.01%	0.002%
40	6.526	1607	1613	1624	rVB6	1685	3505	0.20%	0.031%
41	6.568	1624	1626	1629	rBV	248	179	0.01%	0.002%
42	6.610	1635	1639	1641	rBV2	469	342	0.02%	0.003%
43	6.693	1650	1665	1691	rBV	280246	550178	30.90%	4.861%
44	6.809	1699	1701	1705	rVB3	660	413	0.02%	0.004%
45	6.877	1719	1722	1725	rBV2	365	183	0.01%	0.002%
46	7.018	1759	1766	1768	rBV	245	222	0.01%	0.002%
47	7.041	1769	1773	1775	rBV	274	213	0.01%	0.002%
48	7.185	1809	1818	1828	rBV5	2735	4479	0.25%	0.040%
49	7.256	1838	1840	1843	rVB	454	242	0.01%	0.002%
50	7.275	1843	1846	1849	rBV2	341	311	0.02%	0.003%
51	7.317	1856	1859	1862	rVV3	267	191	0.01%	0.002%
52	7.462	1896	1904	1907	rBV3	521	520	0.03%	0.005%
53	7.568	1923	1937	1958	rBV	141229	252822	14.20%	2.234%
54	7.690	1970	1975	1982	rVB3	1230	1615	0.09%	0.014%
55	7.761	1993	1997	2000	rBV2	298	253	0.01%	0.002%
56	7.793	2003	2007	2010	rBV2	365	383	0.02%	0.003%
57	7.899	2024	2040	2055	rBV	546303	957400	53.78%	8.460%
58	8.121	2106	2109	2113	rVB3	368	230	0.01%	0.002%
59	8.182	2113	2128	2142	rBV	102548	178020	10.00%	1.573%
60	8.401	2193	2196	2201	rVB2	328	257	0.01%	0.002%
61	8.468	2213	2217	2225	rBV4	909	1078	0.06%	0.010%
62	8.526	2232	2235	2240	rBV	222	218	0.01%	0.002%
63	8.636	2256	2269	2300	rBV	382527	705340	39.62%	6.232%
64	8.928	2356	2360	2363	rBV2	238	250	0.01%	0.002%
65	9.160	2429	2432	2435	rVV2	226	208	0.01%	0.002%
66	9.417	2499	2512	2546	rBV	578449	1046557	58.79%	9.247%
67	9.584	2561	2564	2569	rVB2	420	372	0.02%	0.003%
68	9.613	2569	2573	2574	rBV	244	178	0.01%	0.002%
69	9.677	2588	2593	2594	rBV3	275	234	0.01%	0.002%
70	9.690	2594	2597	2598	rBV	485	249	0.01%	0.002%
71	9.999	2690	2693	2697	rVB	280	194	0.01%	0.002%
72	10.066	2711	2714	2716	rBV	340	230	0.01%	0.002%
73	10.137	2734	2736	2739	rVB	297	172	0.01%	0.002%
74	10.163	2739	2744	2747	rVB2	262	282	0.02%	0.002%
75	10.301	2785	2787	2791	rBV2	262	198	0.01%	0.002%
76	10.391	2812	2815	2819	rVV2	218	187	0.01%	0.002%

Data Path : Z:\voasrv\HPCHEM1\MSVOA_U\Data\VU041822\
 Data File : VU048113.D
 Acq On : 18 Apr 2022 12:12
 Operator : SY/MD
 Sample : N2387-06DL 10X
 Misc : 5.0mL/MSVOA_U/WATER
 ALS Vial : 6 Sample Multiplier: 1

Instrument :
 MSVOA_U
 ClientSampleId :
 C0J63DL

Integration Parameters: LSCINT.P

Integrator: RTE
 Smoothing : OFF Filtering: 5
 Sampling : 1 Min Area: 0 % of largest Peak
 Start Thrs: 0.2 Max Peaks: 100
 Stop Thrs : 0 Peak Location: TOP

If leading or trailing edge < 100 prefer < Baseline drop else tangent >
 Peak separation: 5

Method : Z:\voasrv\HPCHEM1\MSVOA_U\Method\SFAMULM032422WMA.M
 Title : VOC Analysis

77	10.529	2855	2858	2862	rBV2	198	187	0.01%	0.002%
78	10.568	2867	2870	2872	rBV	239	190	0.01%	0.002%
79	10.674	2894	2903	2913	rBV3	2408	3350	0.19%	0.030%
80	10.758	2915	2929	2947	rBV	417333	675592	37.95%	5.969%
81	10.864	2959	2962	2964	rBV3	470	253	0.01%	0.002%
82	11.102	3033	3036	3039	rVV	357	307	0.02%	0.003%
83	11.121	3039	3042	3048	rVB5	486	459	0.03%	0.004%
84	11.372	3118	3120	3129	rVB2	245	209	0.01%	0.002%
85	11.455	3140	3146	3151	rBV2	1760	2378	0.13%	0.021%
86	11.578	3180	3184	3190	rVB3	343	389	0.02%	0.003%
87	11.697	3213	3221	3227	rBV2	1044	1300	0.07%	0.011%
88	11.748	3227	3237	3245	rVV3	20636	32132	1.80%	0.284%
89	11.812	3245	3257	3282	rVB2	638741	1146181	64.38%	10.128%
90	11.970	3303	3306	3311	rVB4	1257	1144	0.06%	0.010%
91	12.098	3343	3346	3348	rBV	525	362	0.02%	0.003%
92	12.201	3360	3378	3405	rVV2	747299	1780230	100.00%	15.730%
93	12.478	3461	3464	3467	rBV	313	235	0.01%	0.002%
94	12.523	3475	3478	3480	rBV2	425	242	0.01%	0.002%
95	13.163	3670	3677	3679	rBV2	595	757	0.04%	0.007%
96	13.227	3691	3697	3705	rBV5	822	1322	0.07%	0.012%
97	13.841	3877	3888	3904	rBV	127445	199293	11.19%	1.761%
98	14.092	3960	3966	3975	rVB	2427	3511	0.20%	0.031%
99	14.330	4031	4040	4052	rVB3	20439	31311	1.76%	0.277%
100	16.002	4553	4560	4571	rBV4	6797	10818	0.61%	0.096%

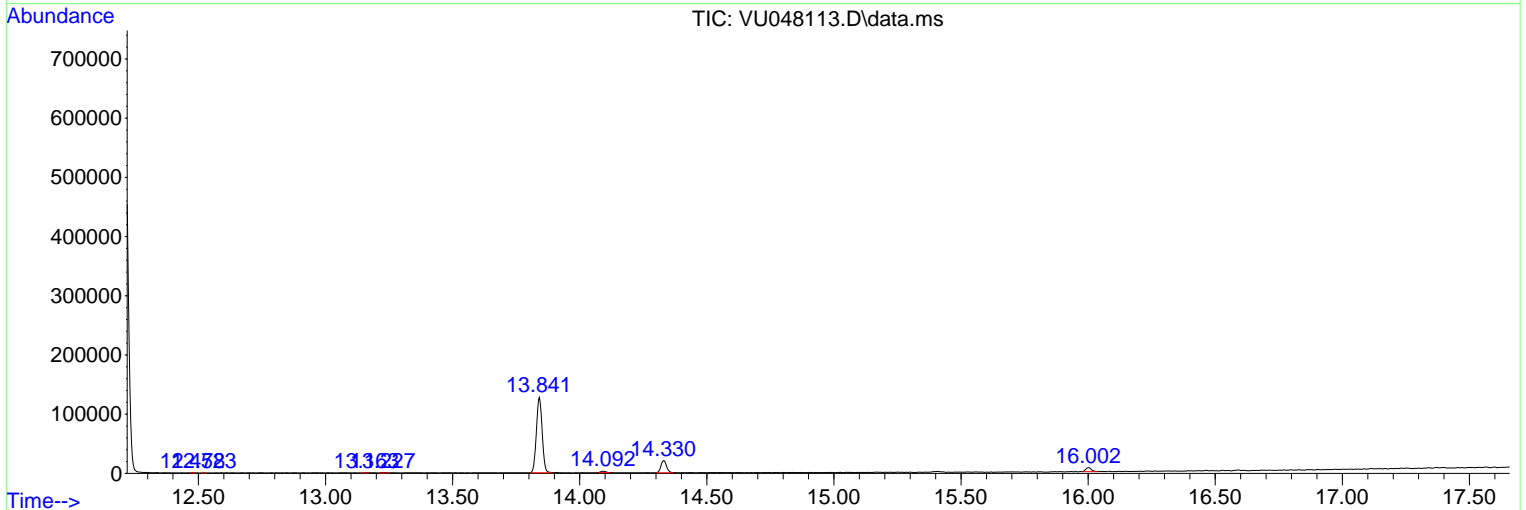
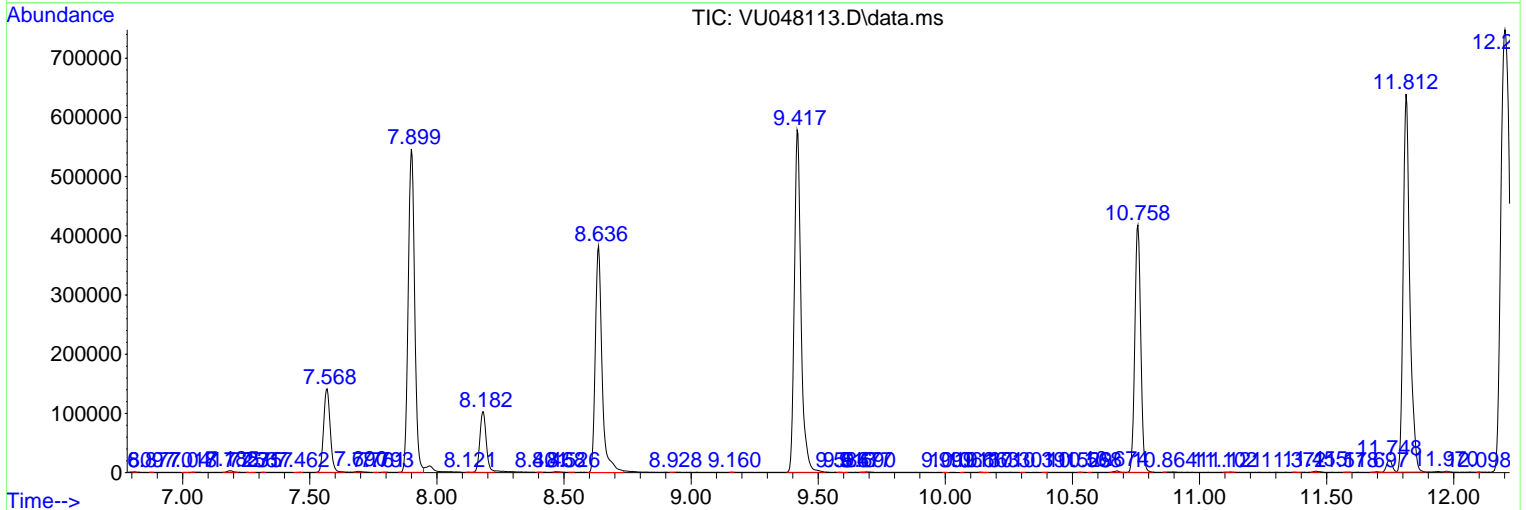
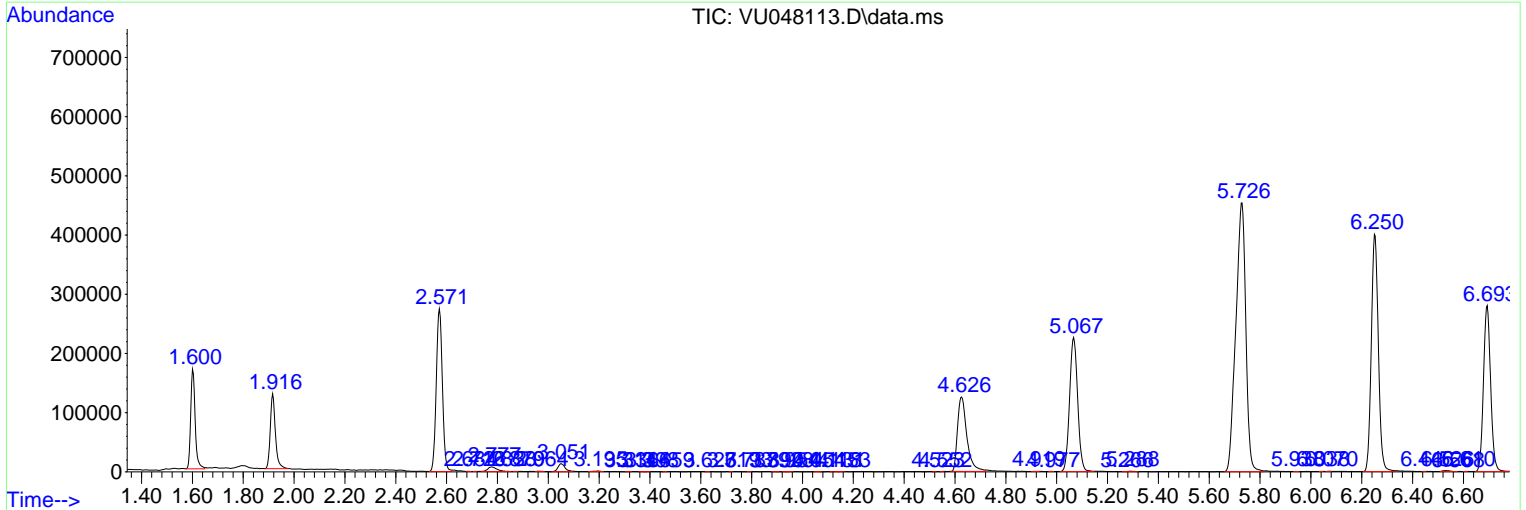
Sum of corrected areas: 11317439

Data Path : Z:\voasrv\HPCHEM1\MSVOA_U\Data\VU041822\
 Data File : VU048113.D
 Acq On : 18 Apr 2022 12:12
 Operator : SY/MD
 Sample : N2387-06DL 10X
 Misc : 5.0mL/MSVOA_U/WATER
 ALS Vial : 6 Sample Multiplier: 1

Instrument :
 MSVOA_U
 ClientSampleId :
 C0J63DL

Quant Method : Z:\voasrv\HPCHEM1\MSVOA_U\Method\SFAMULM032422WMA.M
 Quant Title : VOC Analysis

TIC Library : C:\Database\NIST20.L
 TIC Integration Parameters: LSCINT.P



Library Search Compound Report

Data Path : Z:\voasrv\HPCHEM1\MSVOA_U\Data\VU041822\
Data File : VU048113.D
Acq On : 18 Apr 2022 12:12
Operator : SY/MD
Sample : N2387-06DL 10X
Misc : 5.0mL/MSVOA_U/WATER
ALS Vial : 6 Sample Multiplier: 1

Instrument :
MSVOA_U
ClientSampleId :
C0J63DL

Quant Method : Z:\voasrv\HPCHEM1\MSVOA_U\Method\SFAMULM032422WMA.M
Quant Title : VOC Analysis

TIC Library : C:\Database\NIST20.L
TIC Integration Parameters: LSCINT.P

No Library Search Compounds Detected

Data Path : Z:\voasrv\HPCHEM1\MSVOA_U\Data\VU041822\
Data File : VU048113.D
Acq On : 18 Apr 2022 12:12
Operator : SY/MD
Sample : N2387-06DL 10X
Misc : 5.0mL/MSVOA_U/WATER
ALS Vial : 6 Sample Multiplier: 1

Instrument :
MSVOA_U
ClientSampleId :
C0J63DL

Quant Method : Z:\voasrv\HPCHEM1\MSVOA_U\Method\SFAMULM032422WMA.M
Quant Title : VOC Analysis

TIC Library : C:\Database\NIST0.L
TIC Integration Parameters: LSCINT.P

TIC Top Hit name	RT	EstConc	Units	Response	--Internal Standard--			
					#	RT	Resp	Conc
