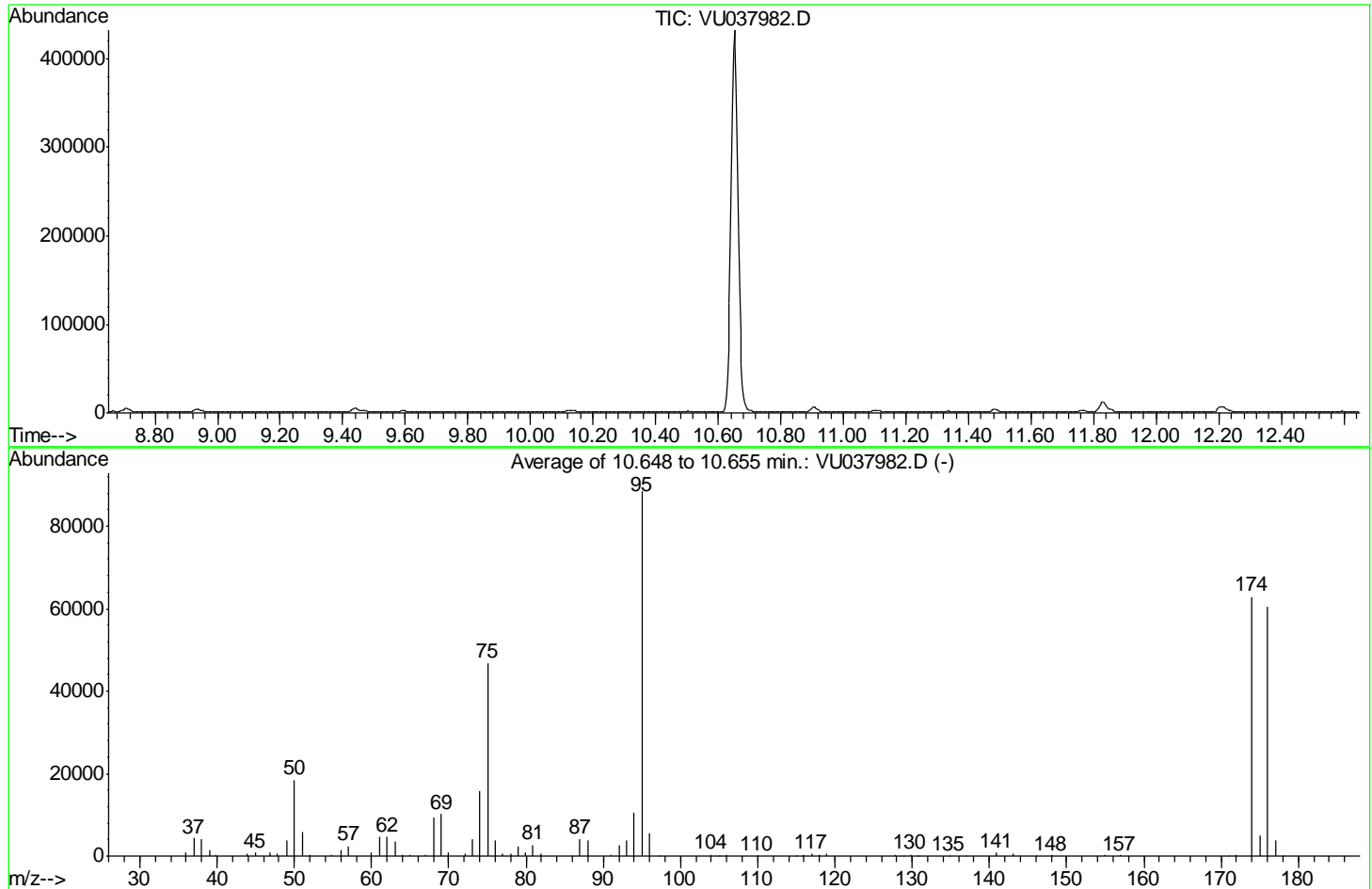


Data Path : Z:\voasrv\HPCHEM1\MSVOA U\Data\VU050120\
 Data File : VU037982.D
 Acq On : 01 May 2020 08:42
 Operator : JC/MD
 Sample : BFB46
 Misc : 5.0mL/MSVOA U/WATER
 ALS Vial : 1 Sample Multiplier: 1

Instrument :
 MSVOA_U
 ClientSampleId :
 BFB46

Integration File: LSCINT.P

Method : Z:\VOASRV\HPCHEM1\MSVOA_U\METHOD\SOMULM043020WMA.M
 Title : VOC Analysis
 Last Update : Mon May 04 08:51:31 2020



AutoFind: Scans 2895, 2896, 2897; Background Corrected with Scan 2883

Target Mass	Rel. to Mass	Lower Limit%	Upper Limit%	Rel. Abn%	Raw Abn	Result Pass/Fail
50	95	15	40	20.8	18400	PASS
75	95	30	80	52.9	46800	PASS
95	95	100	100	100.0	88445	PASS
96	95	5	9	6.3	5576	PASS
173	174	0.00	2	0.0	0	PASS
174	95	50	120	71.1	62890	PASS
175	174	5	9	7.7	4851	PASS
176	174	95	101	96.0	60392	PASS
177	176	5	9	6.3	3801	PASS

m/z	Abundance
36.00	875.0
37.00	4579.0
38.00	4188.0
39.00	1621.0
40.00	501.0
44.00	1674.0
44.90	853.0
46.90	1013.0
47.80	527.0
49.00	3746.0
50.00	18136.0
51.00	5680.0
52.00	310.0
54.80	230.0
56.00	1435.0
57.00	2669.0
60.00	1058.0
61.00	4619.0
62.00	4499.0
63.00	3280.0
64.00	286.0
64.90	333.0
67.00	242.0
68.00	9340.0
69.00	9745.0
70.00	897.0
72.10	445.0
73.00	4074.0
74.00	15465.0
75.00	46920.0
76.00	3681.0
77.00	682.0
78.00	668.0
78.90	2296.0
80.00	723.0
80.90	2747.0
82.00	534.0
86.00	231.0
87.00	3942.0
88.00	3705.0
91.00	408.0
92.00	2565.0
93.00	3611.0
94.00	10719.0
95.00	87080.0
96.10	5284.0
97.20	105.0
104.00	352.0
105.00	114.0
105.90	291.0
115.80	299.0
117.00	613.0
117.90	296.0
118.90	524.0
127.90	229.0
128.90	127.0
129.80	261.0
130.80	109.0
137.10	128.0
141.00	778.0
143.00	739.0
148.00	197.0
154.90	188.0
156.90	171.0
171.90	370.0
174.00	58656.0
175.00	4784.0
176.00	57416.0
177.00	3864.0
178.00	122.0

Instrument :
MSVOA_U
ClientSampleId :
BFB46

m/z	Abundance
36.00	866.0
37.00	4422.0
38.00	4281.0
39.00	1641.0
39.90	509.0
44.00	1524.0
44.90	765.0
46.90	913.0
47.80	632.0
49.10	3737.0
50.00	18904.0
51.00	6116.0
52.00	301.0
54.80	258.0
56.00	1340.0
57.00	2466.0
60.00	995.0
61.00	4822.0
62.00	4883.0
63.00	3565.0
64.00	344.0
64.90	241.0
67.00	223.0
68.00	9605.0
69.00	10453.0
70.00	860.0
72.00	497.0
73.00	4164.0
74.00	16243.0
75.00	48464.0
76.00	3849.0
77.00	557.0
78.00	647.0
78.90	2552.0
80.00	815.0
80.90	2721.0
82.00	571.0
86.00	134.0
87.00	4455.0
87.90	4012.0
91.00	385.0
92.00	2678.0
93.00	4018.0
94.00	10963.0
95.00	91152.0
96.00	5711.0
97.20	141.0
104.00	388.0
105.00	136.0
105.90	329.0
110.00	101.0
115.00	106.0
116.00	276.0
117.00	512.0
117.90	369.0
118.90	507.0
127.80	208.0
128.90	112.0
129.80	353.0
130.80	120.0
134.80	101.0
137.00	152.0
140.90	848.0
143.00	748.0
144.00	136.0
148.00	203.0
154.90	174.0
156.90	212.0
171.00	106.0
171.90	337.0
174.00	65224.0
175.00	4972.0
176.00	62280.0
177.00	3915.0
178.00	133.0

Instrument :
MSVOA_U
ClientSampleId :
BFB46

m/z	Abundance
35.90	772.0
37.00	4097.0
38.00	4073.0
39.00	1528.0
39.90	513.0
44.00	1298.0
45.00	774.0
46.90	847.0
47.90	652.0
49.10	3560.0
50.00	18160.0
51.00	5982.0
51.90	247.0
54.90	273.0
56.00	1202.0
57.00	2134.0
60.00	737.0
61.00	4346.0
62.00	4621.0
63.00	3393.0
64.00	349.0
64.90	196.0
67.00	242.0
68.00	8848.0
69.00	10253.0
70.00	749.0
72.00	512.0
73.00	3863.0
74.00	15259.0
75.00	45016.0
76.00	3847.0
77.00	442.0
78.00	545.0
78.90	2493.0
79.90	800.0
80.90	2436.0
82.00	567.0
87.00	4308.0
87.90	3803.0
91.00	343.0
92.00	2526.0
93.00	4047.0
94.00	10239.0
95.00	87104.0
96.00	5733.0
97.10	175.0
104.00	342.0
104.90	150.0
105.90	339.0
109.90	107.0
115.10	134.0
116.00	331.0
117.00	421.0
117.90	350.0
118.90	453.0
127.80	216.0
129.80	391.0
130.80	128.0
137.00	169.0
140.90	837.0
143.00	709.0
144.00	124.0
146.00	118.0
148.00	207.0
154.90	155.0
156.90	177.0
171.10	111.0
172.00	295.0
174.00	64792.0
175.00	4798.0
176.00	61480.0
177.00	3626.0

Instrument :
MSVOA_U
ClientSampleId :
BFB46

Scan 2883 (10.610 min): VU037982.D
BFB46

m/z	Abundance
39.90	256.0
43.90	1010.0

Instrument :
MSVOA_U
ClientSampleId :
BFB46