

Data Path : Z:\voasrv\HPCHEM1\MSVOA_U\Data\VU051424\
 Data File : VU058892.D
 Acq On : 14 May 2024 17:41
 Operator : MD/SY
 Sample : P2392-15
 Misc : 25.0mL/MSVOA_U/WATER
 ALS Vial : 21 Sample Multiplier: 1

Instrument :
 MSVOA_U
 ClientSampleId :

Quant Time: May 15 01:10:15 2024
 Quant Method : Z:\voasrv\HPCHEM1\MSVOA_U\Method\SFAMUTR051424WMA.M
 Quant Title : TRACE VOA SFAM1.0
 QLast Update : Wed May 15 00:49:30 2024
 Response via : Initial Calibration

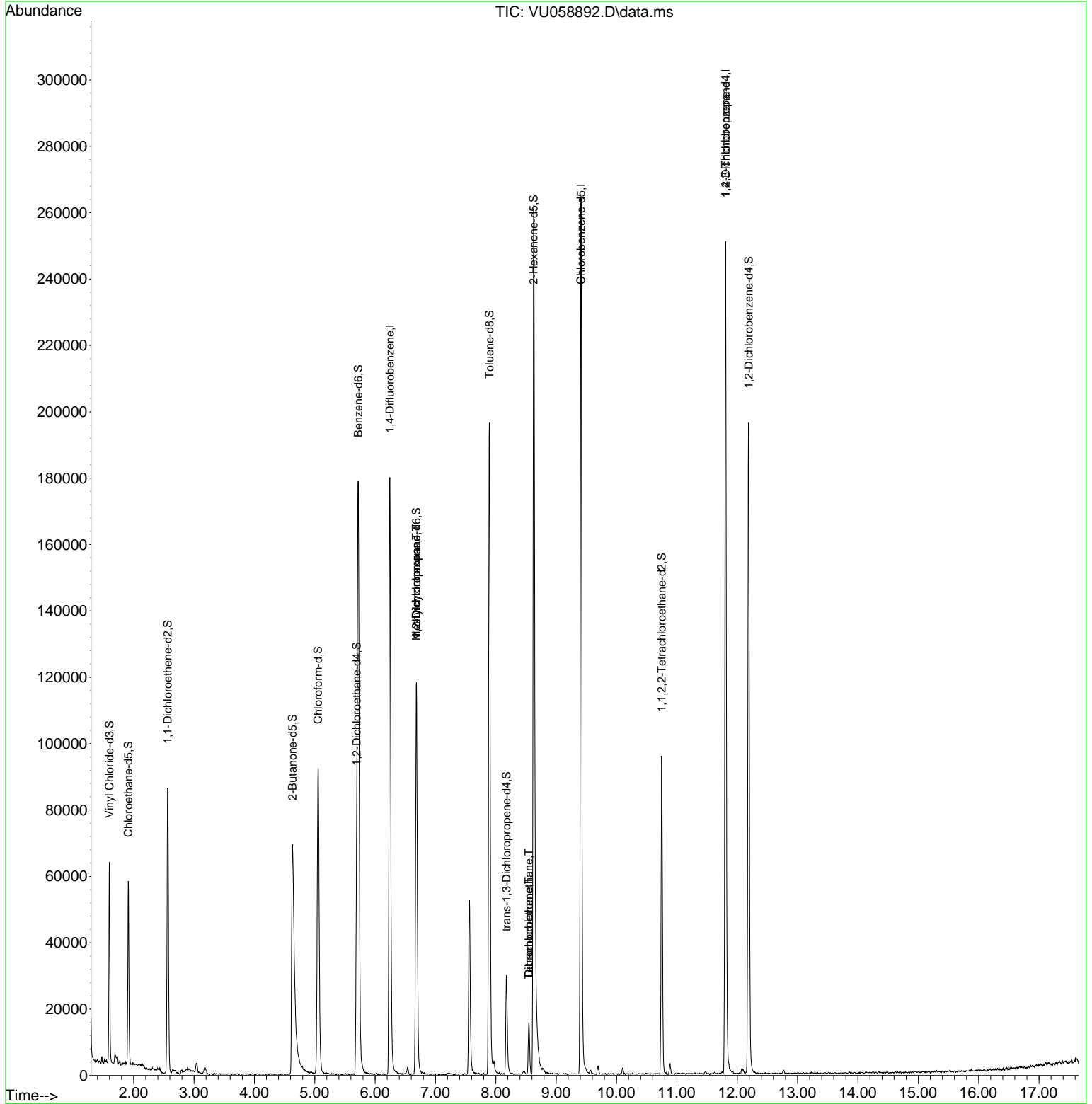
Compound	R.T.	QI on	Response	Conc	Units	Dev(Min)
Internal Standards						
1) 1,4-Difluorobenzene	6.245	114	149378	5.000	ug/L	0.00
28) Chlorobenzene-d5	9.412	117	148743	5.000	ug/L	0.00
58) 1,4-Dichlorobenzene-d4	11.807	152	68167	5.000	ug/L	0.00
System Monitoring Compounds						
4) Vinyl Chloride-d3	1.599	65	41907	4.632	ug/L	0.00
Spike Amount	5.000	Range	40 - 130	Recovery	=	92.600%
7) Chloroethane-d5	1.911	69	39260	4.800	ug/L	0.00
Spike Amount	5.000	Range	65 - 130	Recovery	=	96.000%
11) 1,1-Dichloroethene-d2	2.563	65	16671	4.521	ug/L	0.00
Spike Amount	5.000	Range	60 - 125	Recovery	=	90.400%
20) 2-Butanone-d5	4.631	46	129718	55.140	ug/L	0.00
Spike Amount	50.000	Range	40 - 130	Recovery	=	110.280%
24) Chloroform-d	5.055	84	89357	4.890	ug/L	0.00
Spike Amount	5.000	Range	70 - 125	Recovery	=	97.800%
26) 1,2-Dichloroethane-d4	5.695	65	46898	4.994	ug/L	0.00
Spike Amount	5.000	Range	70 - 130	Recovery	=	99.800%
32) Benzene-d6	5.721	84	174764	5.119	ug/L	0.00
Spike Amount	5.000	Range	70 - 125	Recovery	=	102.400%
36) 1,2-Dichloropropane-d6	6.685	67	59618	5.241	ug/L	0.00
Spike Amount	5.000	Range	60 - 140	Recovery	=	104.800%
41) Toluene-d8	7.894	98	137416	4.422	ug/L	0.00
Spike Amount	5.000	Range	70 - 130	Recovery	=	88.400%
43) trans-1,3-Dichloropropene	8.177	79	18243	4.673	ug/L	0.00
Spike Amount	5.000	Range	55 - 130	Recovery	=	93.400%
46) 2-Hexanone-d5	8.627	63	99544	53.131	ug/L	0.00
Spike Amount	50.000	Range	45 - 130	Recovery	=	106.260%
56) 1,1,2,2-Tetrachloroethene	10.749	84	49267	5.014	ug/L	0.00
Spike Amount	5.000	Range	65 - 120	Recovery	=	100.200%
66) 1,2-Dichlorobenzene-d4	12.190	152	53601	5.228	ug/L	0.00
Spike Amount	5.000	Range	80 - 120	Recovery	=	104.600%
Target Compounds						
35) Methylcyclohexane	6.682	83	13359	0.810	ug/L #	18
37) 1,2-Dichloropropane	6.685	63	6071	0.489	ug/L #	90
47) Tetrachloroethene	8.547	164	3531	0.429	ug/L	97
49) Dibromochloromethane	8.550	129	3417	0.371	ug/L #	12
61) 1,2,3-Trichloropropane	11.807	75	9416	1.341	ug/L #	71

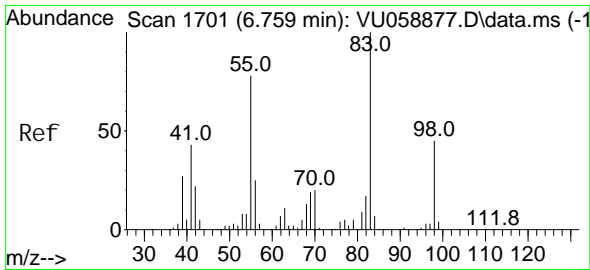
(#) = qualifier out of range (m) = manual integration (+) = signals summed

Data Path : Z:\voasrv\HPCHEM1\MSVOA_U\Data\VU051424\
 Data File : VU058892.D
 Acq On : 14 May 2024 17:41
 Operator : MD/SY
 Sample : P2392-15
 Misc : 25.0mL/MSVOA_U/WATER
 ALS Vial : 21 Sample Multiplier: 1

Instrument :
 MSVOA_U
 ClientSampleId :

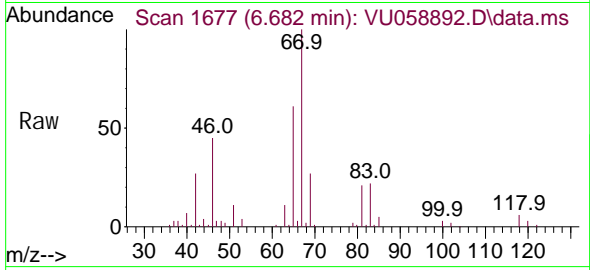
Quant Time: May 15 01:10:15 2024
 Quant Method : Z:\voasrv\HPCHEM1\MSVOA_U\Method\SFAMUTR051424WMA.M
 Quant Title : TRACE VOA SFAM1.0
 QLast Update : Wed May 15 00:49:30 2024
 Response via : Initial Calibration



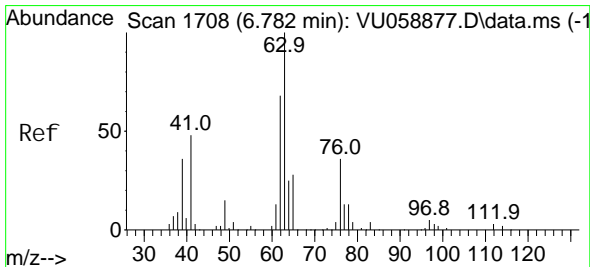
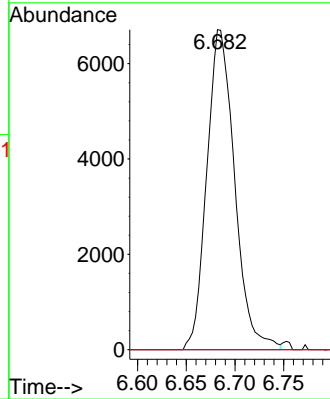
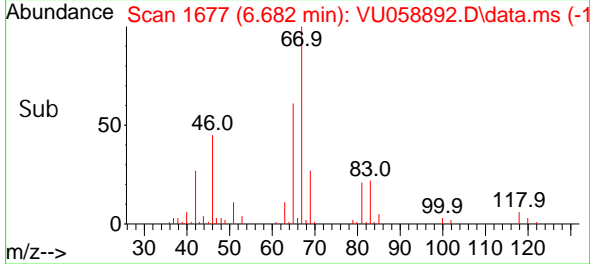


#35
 Methylcyclohexane
 Concen: 0.810 ug/L
 RT: 6.682 min Scan# 1677
 Delta R.T. -0.077 min
 Lab File: VU058892.D
 Acq: 14 May 2024 17:41

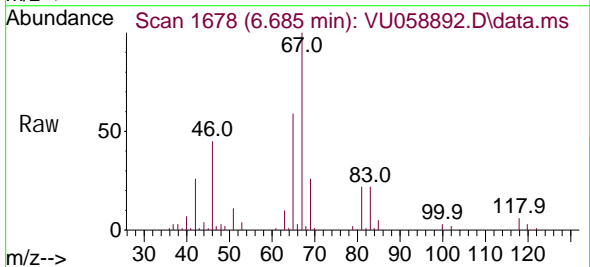
Instrument : MSVOA_U
 ClientSampleId :



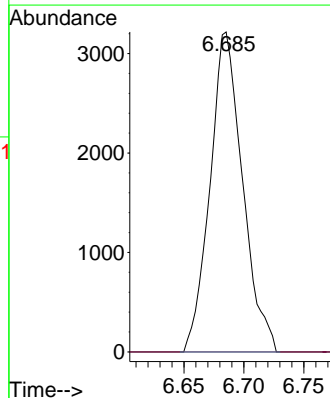
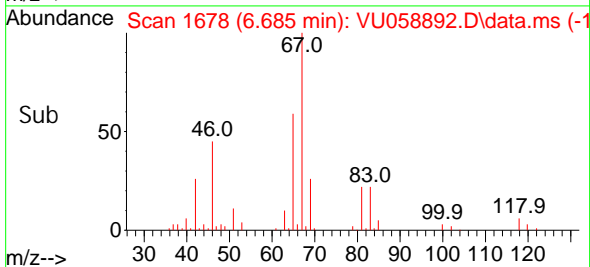
Tgt Ion: 83 Resp: 13359
 Ion Ratio Lower Upper
 83 100
 55 0.0 62.7 94.1#
 98 0.5 35.4 53.0#

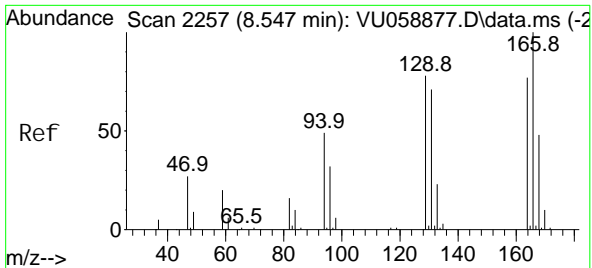


#37
 1,2-Dichloropropane
 Concen: 0.489 ug/L
 RT: 6.685 min Scan# 1678
 Delta R.T. -0.096 min
 Lab File: VU058892.D
 Acq: 14 May 2024 17:41



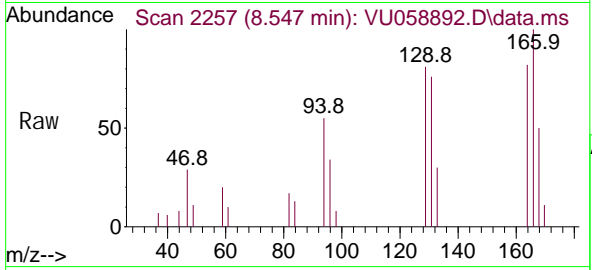
Tgt Ion: 63 Resp: 6071
 Ion Ratio Lower Upper
 63 100
 112 0.0 2.6 3.8#



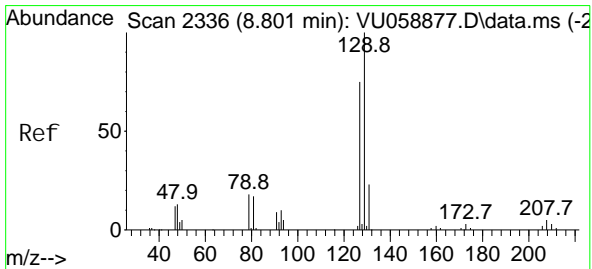
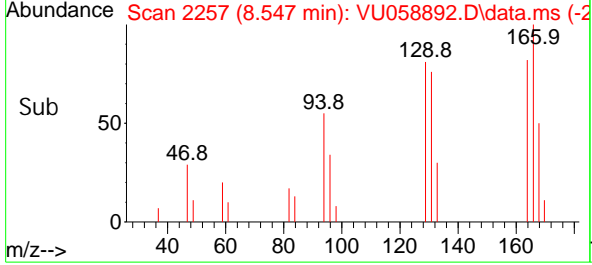
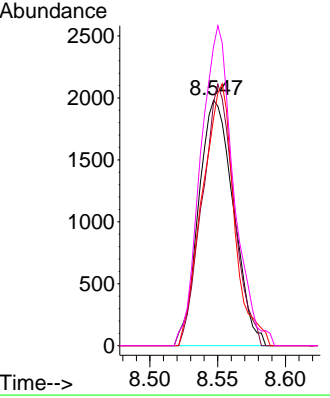


#47
 Tetrachloroethene
 Concen: 0.429 ug/L
 RT: 8.547 min Scan# 21
 Delta R.T. 0.000 min
 Lab File: VU058892.D
 Acq: 14 May 2024 17:41

Instrument : MSVOA_U
 ClientSampleId :

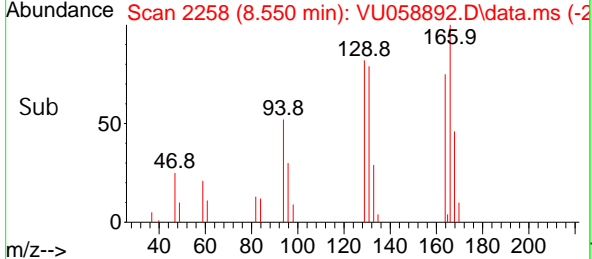
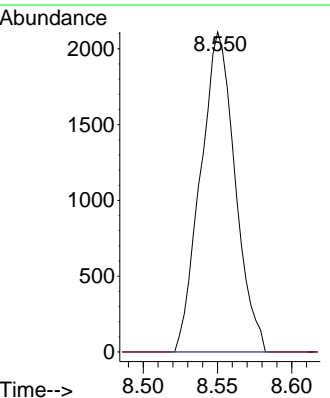
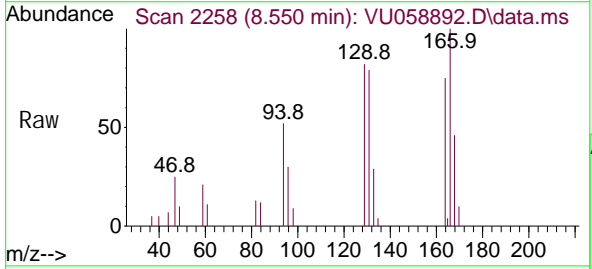


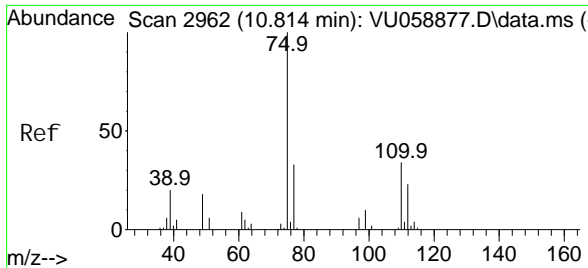
Tgt Ion: 164 Resp: 3531
 Ion Ratio Lower Upper
 164 100
 129 99.2 70.8 131.4
 131 92.6 64.8 120.3
 166 121.9 91.1 169.1



#49
 Di bromochloromethane
 Concen: 0.371 ug/L
 RT: 8.550 min Scan# 2258
 Delta R.T. -0.251 min
 Lab File: VU058892.D
 Acq: 14 May 2024 17:41

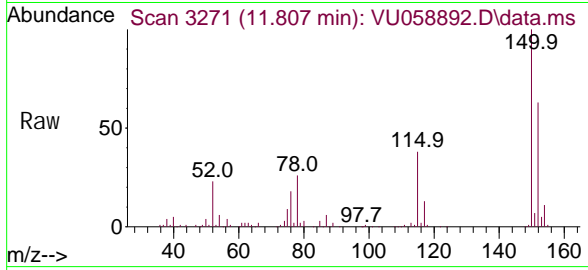
Tgt Ion: 129 Resp: 3417
 Ion Ratio Lower Upper
 129 100
 127 0.0 52.5 97.5#





#61
 1, 2, 3-Tri chl oropropane
 Concen: 1.341 ug/L
 RT: 11.807 min Scan# 31
 Del ta R.T. 0.994 min
 Lab File: VU058892.D
 Acq: 14 May 2024 17: 41

Instrument : MSVOA_U
 ClientSampleId :



Tgt Ion: 75 Resp: 9416

Ion	Ratio	Lower	Upper
75	100		
110	2.3	27.1	40.7#
77	30.8	25.4	38.2

