

Data Path : Z:\voasrv\HPCHEM1\MSVOA_U\Data\VU051424\
 Data File : VU058886.D
 Acq On : 14 May 2024 14:55
 Operator : MD/SY
 Sample : P2392-12 100X
 Misc : 25.0mL/MSVOA_U/WATER
 ALS Vial : 14 Sample Multiplier: 1

Instrument :
 MSVOA_U
 ClientSampleId :
 BHAP8

Integration Parameters: rteint.p
 Integrator: RTE
 Smoothing : ON
 Sampling : 1
 Start Thrs: 0.1
 Stop Thrs : 0
 Filtering: 5
 Min Area: 3 % of largest Peak
 Max Peaks: 100
 Peak Location: TOP

If leading or trailing edge < 100 prefer < Baseline drop else tangent >
 Peak separation: 5

Method : Z:\voasrv\HPCHEM1\MSVOA_U\Method\SFAMUTR051424WMA.M
 Title : TRACE VOA SFAM1.0

Signal : TIC: VU058886.D\data.ms

peak #	R.T. min	first scan	max scan	last scan	PK TY	peak height	corr. area	corr. % max.	% of total
1	1.595	87	95	105	rBV	67329	74627	8.53%	1.326%
2	1.911	185	193	209	rVB	62776	80231	9.17%	1.426%
3	2.563	384	396	413	rBV	98126	162603	18.59%	2.890%
4	3.039	533	544	558	rVB2	16365	30752	3.52%	0.547%
5	4.653	1030	1046	1091	rBV2	101188	368666	42.15%	6.552%
6	5.055	1156	1171	1194	rBV	102248	231838	26.50%	4.121%
7	5.717	1356	1377	1401	rBV3	200976	527250	60.28%	9.371%
8	6.245	1528	1541	1570	rBV	194172	382374	43.71%	6.796%
9	6.537	1619	1632	1649	rVB5	25505	51586	5.90%	0.917%
10	6.682	1660	1677	1699	rBV	125704	252670	28.89%	4.491%
11	7.560	1938	1950	1973	rBV	57826	106749	12.20%	1.897%
12	7.891	2041	2053	2074	rBV	220622	396699	45.35%	7.051%
13	8.177	2131	2142	2158	rBV2	35180	62213	7.11%	1.106%
14	8.547	2244	2257	2272	rBV	519928	874720	100.00%	15.547%
15	8.627	2272	2282	2316	rVV	278807	553131	63.24%	9.831%
16	9.412	2513	2526	2551	rBV	284718	485965	55.56%	8.637%
17	10.749	2931	2942	2958	rBV	103686	170221	19.46%	3.025%
18	11.807	3259	3271	3300	rBV	266858	443610	50.71%	7.884%
19	12.187	3376	3389	3410	rBV	220579	370524	42.36%	6.585%

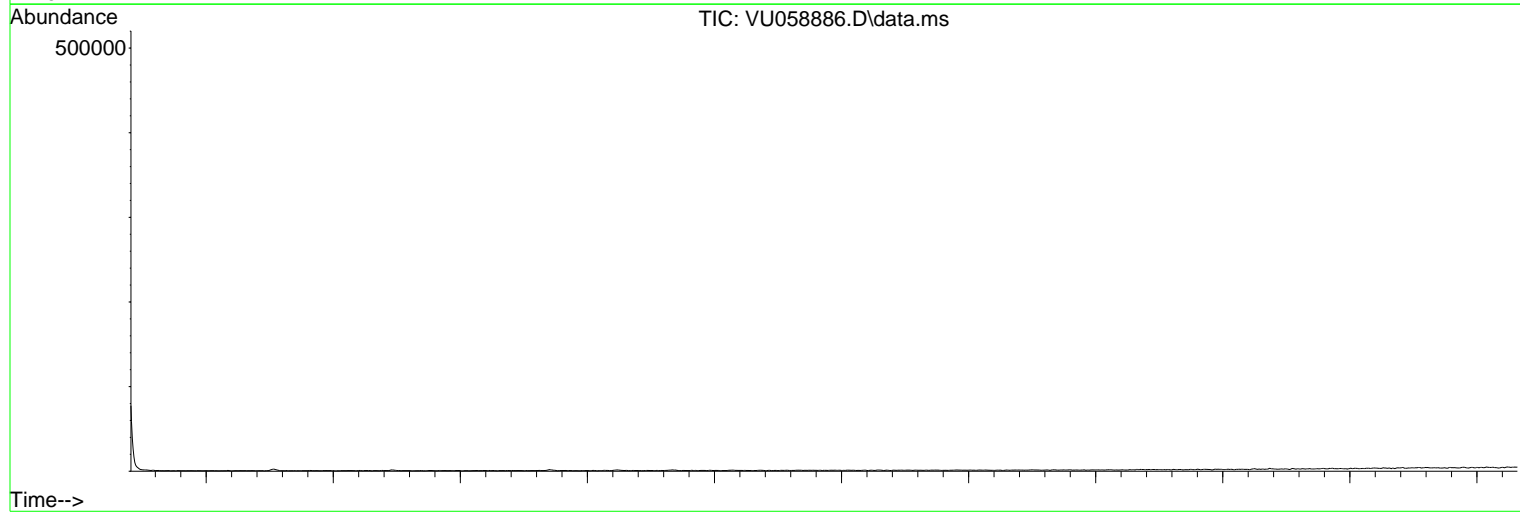
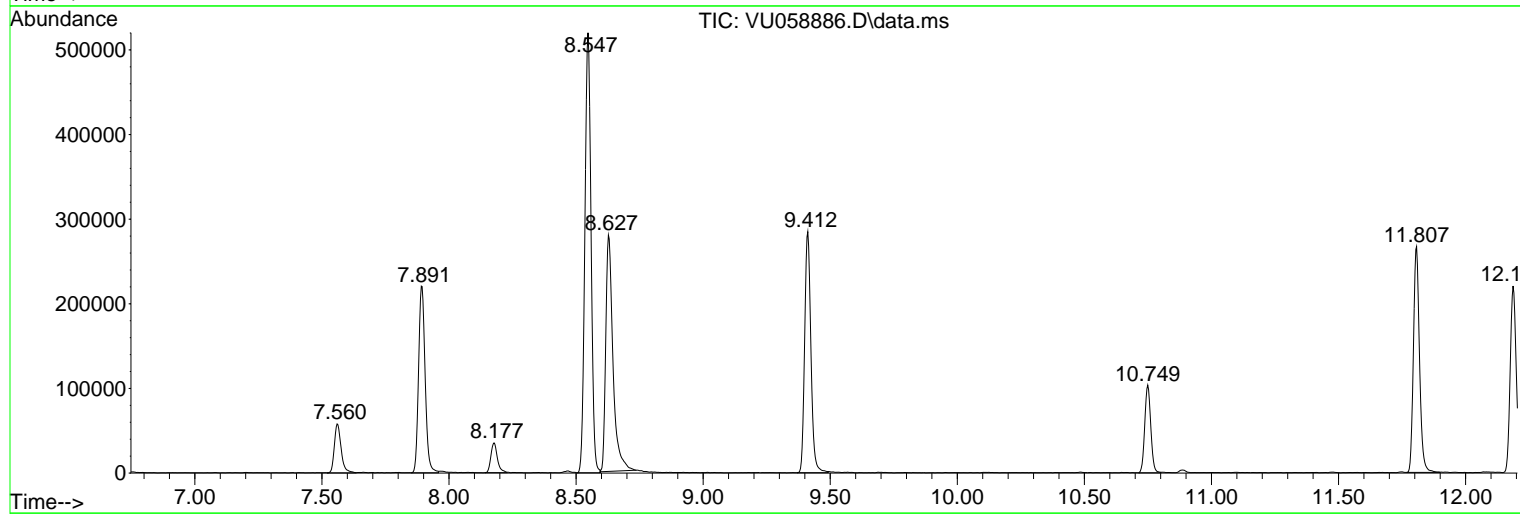
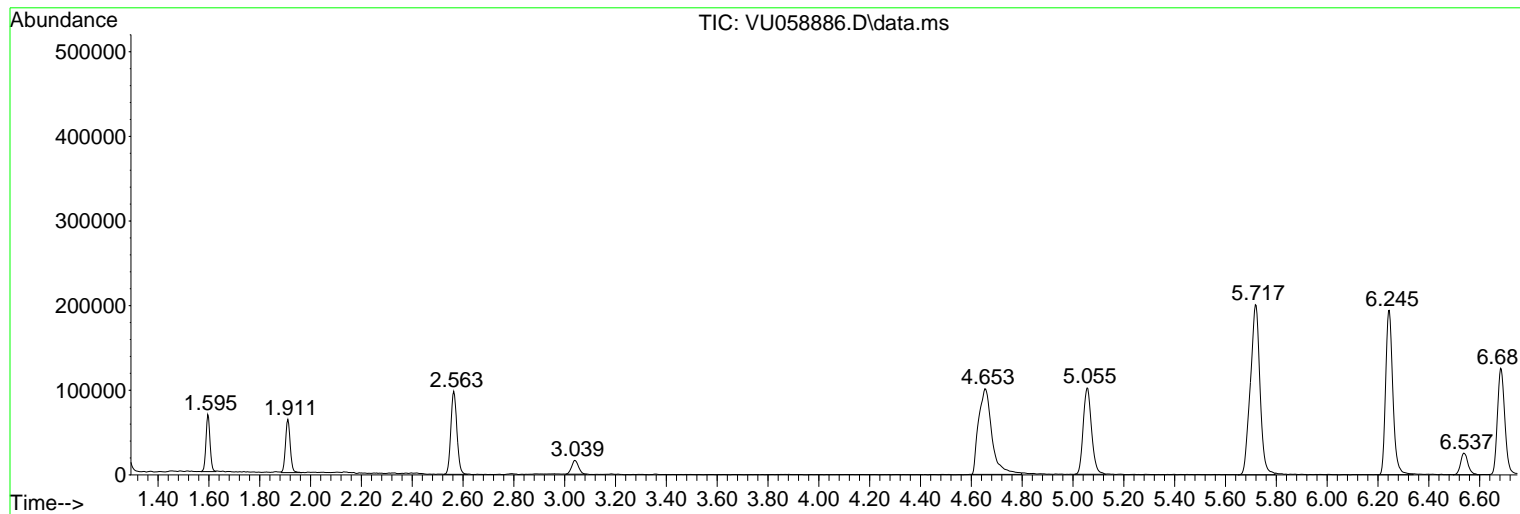
Sum of corrected areas: 5626429

Data Path : Z:\voasrv\HPCHEM1\MSVOA_U\Data\VU051424\
Data File : VU058886.D
Acq On : 14 May 2024 14:55
Operator : MD/SY
Sample : P2392-12 100X
Misc : 25.0mL/MSVOA_U/WATER
ALS Vial : 14 Sample Multiplier: 1

Instrument :
MSVOA_U
ClientSampleId :
BHAP8

Quant Method : Z:\voasrv\HPCHEM1\MSVOA_U\Method\SFAMUTR051424WMA.M
Quant Title : TRACE VOA SFAM1.0

TIC Library : C:\Database\NIST20.L
TIC Integration Parameters: LSCINT.P



Library Search Compound Report

Data Path : Z:\voasrv\HPCHEM1\MSVOA_U\Data\VU051424\
Data File : VU058886.D
Acq On : 14 May 2024 14:55
Operator : MD/SY
Sample : P2392-12 100X
Misc : 25.0mL/MSVOA_U/WATER
ALS Vial : 14 Sample Multiplier: 1

Instrument :
MSVOA_U
ClientSampleId :
BHAP8

Quant Method : Z:\voasrv\HPCHEM1\MSVOA_U\Method\SFAMUTR051424WMA.M
Quant Title : TRACE VOA SFAM1.0

TIC Library : C:\Database\NIST20.L
TIC Integration Parameters: LSCINT.P

No Library Search Compounds Detected

Data Path : Z:\voasrv\HPCHEM1\MSVOA_U\Data\VU051424\
Data File : VU058886.D
Acq On : 14 May 2024 14:55
Operator : MD/SY
Sample : P2392-12 100X
Misc : 25.0mL/MSVOA_U/WATER
ALS Vial : 14 Sample Multiplier: 1

Instrument :
MSVOA_U
ClientSampleId :
BHAP8

Quant Method : Z:\voasrv\HPCHEM1\MSVOA_U\Method\SFAMUTR051424WMA.M
Quant Title : TRACE VOA SFAM1.0

TIC Library : C:\Database\NIST20.L
TIC Integration Parameters: LSCINT.P

TIC Top Hit name	RT	EstConc	Units	Response	--Internal Standard--		
					#	RT	Resp Conc
