

Data Path : Z:\voasrv\HPCHEM1\MSVOA_U\Data\VU052224\
 Data File : VU058934.D
 Acq On : 22 May 2024 09:31
 Operator : MD/SY
 Sample : VU0522WBL01
 Misc : 25.0mL/MSVOA_U/WATER
 ALS Vial : 3 Sample Multiplier: 1

Instrument :
 MSVOA_U
ClientSampleId :

Quant Time: May 23 06:03:17 2024
 Quant Method : Z:\voasrv\HPCHEM1\MSVOA_U\Method\SFAMUSIM052124.M
 Quant Title : TRACE VOA SOM01.0
 QLast Update : Wed May 22 07:04:21 2024
 Response via : Initial Calibration

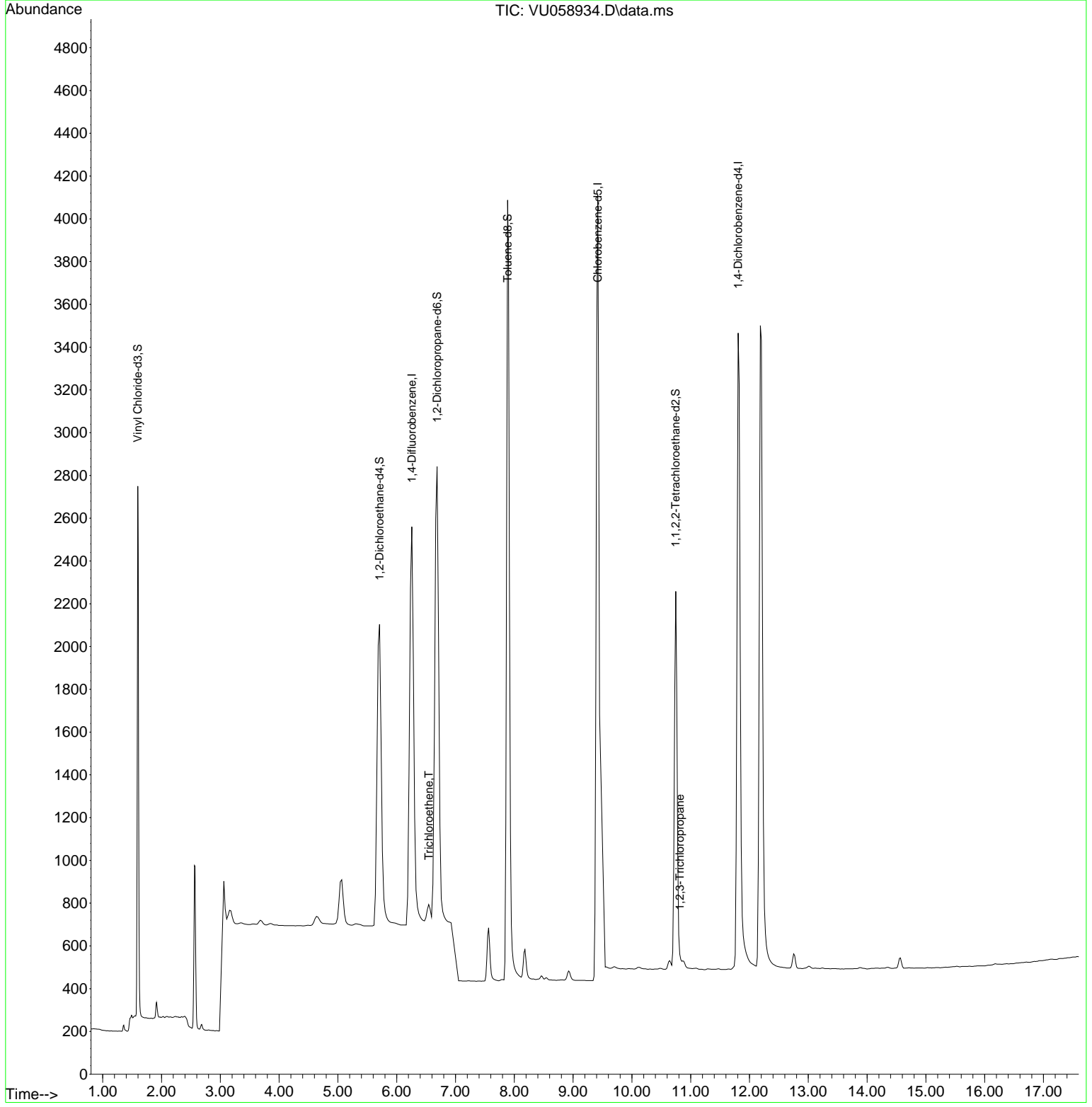
Compound	R.T.	QI on	Response	Conc	Units	Dev(Min)
Internal Standards						
1) 1,4-Difluorobenzene	6.258	114	6407	0.500	ug/L	0.00
5) Chlorobenzene-d5	9.419	117	10033	0.500	ug/L	0.00
11) 1,4-Dichlorobenzene-d4	11.808	152	3422	0.500	ug/L	0.00
System Monitoring Compounds						
2) Vinyl Chloride-d3	1.597	65	2833	0.523	ug/L	0.00
Spike Amount	0.500	Range	40 - 130	Recovery	=	104.000%
4) 1,2-Dichloroethane-d4	5.709	65	3155	0.498	ug/L	0.00
Spike Amount	0.500	Range	70 - 130	Recovery	=	100.000%
7) 1,2-Dichloropropane-d6	6.687	67	3957	0.540	ug/L	0.00
Spike Amount	0.500	Range	60 - 140	Recovery	=	108.000%
8) Toluene-d8	7.887	98	7232	0.505	ug/L	0.00
Spike Amount	0.500	Range	70 - 130	Recovery	=	100.000%
10) 1,1,2,2-Tetrachloroeth.	10.745	84	3651	0.526	ug/L	0.00
Spike Amount	0.500	Range	65 - 120	Recovery	=	106.000%
Target Compounds						
6) Trichloroethene	6.544	95	107	0.019	ug/L #	91
12) 1,2,3-Tri chloropropane	10.814	75	89	0.019	ug/L	93

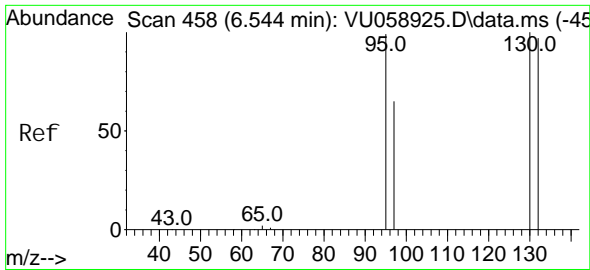
(#) = qualifier out of range (m) = manual integration (+) = signals summed

Data Path : Z:\voasrv\HPCHEM1\MSVOA_U\Data\VU052224\
 Data File : VU058934.D
 Acq On : 22 May 2024 09:31
 Operator : MD/SY
 Sample : VU0522WBL01
 Misc : 25.0mL/MSVOA_U/WATER
 ALS Vial : 3 Sample Multiplier: 1

Instrument :
 MSVOA_U
 ClientSampleId :

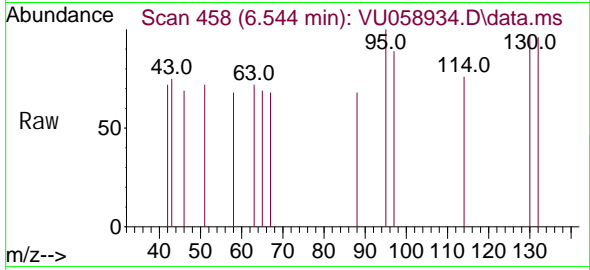
Quant Time: May 23 06:03:17 2024
 Quant Method : Z:\voasrv\HPCHEM1\MSVOA_U\Method\SFAMUSI M052124.M
 Quant Title : TRACE VOA SOM01.0
 QLast Update : Wed May 22 07:04:21 2024
 Response via : Initial Calibration



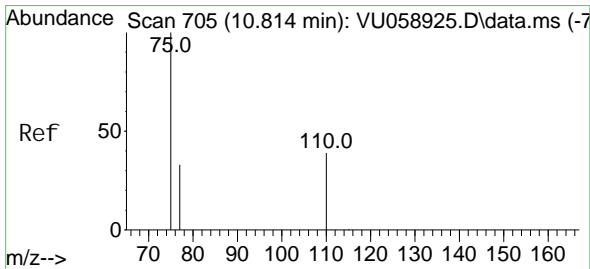
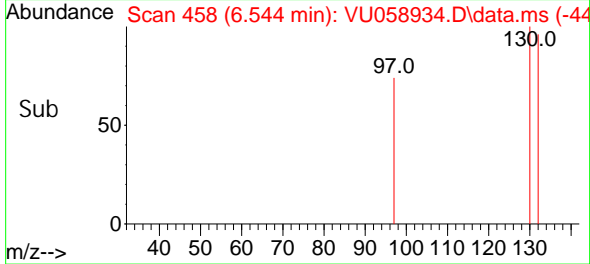
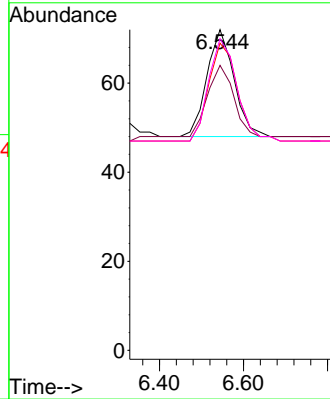


#6
 Trichloroethene
 Concen: 0.019 ug/L
 RT: 6.544 min Scan# 458
 Delta R.T. 0.000 min
 Lab File: VU058934.D
 Acq: 22 May 2024 09:31

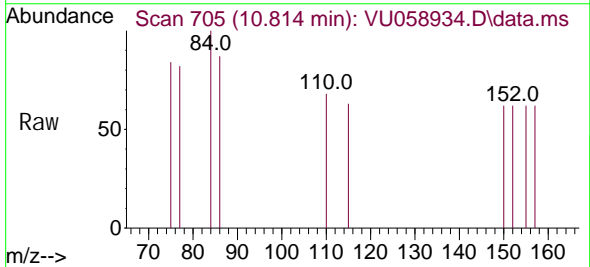
Instrument : MSVOA_U
 ClientSampleId :



Tgt Ion: 95 Resp: 107
 Ion Ratio Lower Upper
 95 100
 97 88.9 47.7 88.7#
 132 95.8 68.5 127.1
 130 97.2 70.5 130.9



#12
 1,2,3-Tri chloropropane
 Concen: 0.019 ug/L
 RT: 10.814 min Scan# 705
 Delta R.T. 0.000 min
 Lab File: VU058934.D
 Acq: 22 May 2024 09:31



Tgt Ion: 75 Resp: 89
 Ion Ratio Lower Upper
 75 100
 110 44.9 30.1 45.1
 77 32.6 26.3 39.5

