

Data Path : Z:\VOASRV\HPCHEM1\MSVOA U\DATA\VU060620\  
 Data File : VU038647.D  
 Acq On : 07 Jun 2020 04:02  
 Operator : SY/MD  
 Sample : L2911-10  
 Misc : 25.0mL/MSVOA U/WATER  
 ALS Vial : 1 Sample Multiplier: 1

Instrument :  
 MSVOA\_U  
 ClientSampled :  
 F9D35

Integration Parameters: rteint.p  
 Integrator: RTE  
 Smoothing : ON  
 Sampling : 1  
 Start Thrs: 0.1  
 Stop Thrs : 0

Filtering: 5  
 Min Area: 3 % of largest Peak  
 Max Peaks: 100  
 Peak Location: TOP

If leading or trailing edge < 100 prefer < Baseline drop else tangent >  
 Peak separation: 5

Method : Z:\VOASRV\HPCHEM1\MSVOA\_U\METHOD\SOMUTR053120WMA.M  
 Title : TRACE VOA SOM01.0

Signal : TIC

peak #	R.T. min	first scan	max scan	last scan	PK TY	peak height	corr. area	corr. % max.	% of total
1	1.369	3	9	18	rVB	29945	29403	1.93%	0.272%
2	1.613	77	85	93	rBV	137171	153679	10.07%	1.420%
3	1.932	176	184	195	rVB	108116	140629	9.21%	1.299%
4	2.591	377	389	403	rBV	229573	380804	24.94%	3.518%
5	2.668	403	413	434	rVB	21332	51259	3.36%	0.474%
6	2.858	446	472	518	rBV2	22918	156898	10.28%	1.450%
7	4.671	1017	1036	1076	rBV	218322	614489	40.25%	5.677%
8	4.845	1077	1090	1119	rVB	86751	197148	12.91%	1.821%
9	5.102	1151	1170	1190	rBV	209961	458178	30.01%	4.233%
10	5.424	1254	1270	1285	rBV4	18385	42070	2.76%	0.389%
11	5.758	1351	1374	1394	rBV2	429931	1116978	73.17%	10.319%
12	6.279	1521	1536	1562	rBV	391333	760556	49.82%	7.026%
13	6.719	1658	1673	1690	rBV	265510	512116	33.55%	4.731%
14	7.591	1931	1944	1958	rBV	126506	224940	14.73%	2.078%
15	7.922	2033	2047	2065	rBV	496341	886080	58.04%	8.186%
16	8.202	2122	2134	2147	rBV	85907	140844	9.23%	1.301%
17	8.655	2261	2275	2308	rBV	838323	1526585	100.00%	14.103%
18	9.436	2503	2518	2544	rBV	560575	964199	63.16%	8.908%
19	10.539	2851	2861	2874	rBV	10597	17848	1.17%	0.165%
20	10.771	2920	2933	2953	rVB2	222287	356445	23.35%	3.293%
21	11.822	3246	3260	3281	rBV	612536	960073	62.89%	8.870%
22	12.079	3327	3340	3358	rBV2	47466	98626	6.46%	0.911%
23	12.205	3366	3379	3395	rVB	543977	871640	57.10%	8.053%
24	13.250	3695	3704	3714	rBV2	10836	16842	1.10%	0.156%
25	17.381	4978	4989	5002	rBV2	77345	145916	9.56%	1.348%

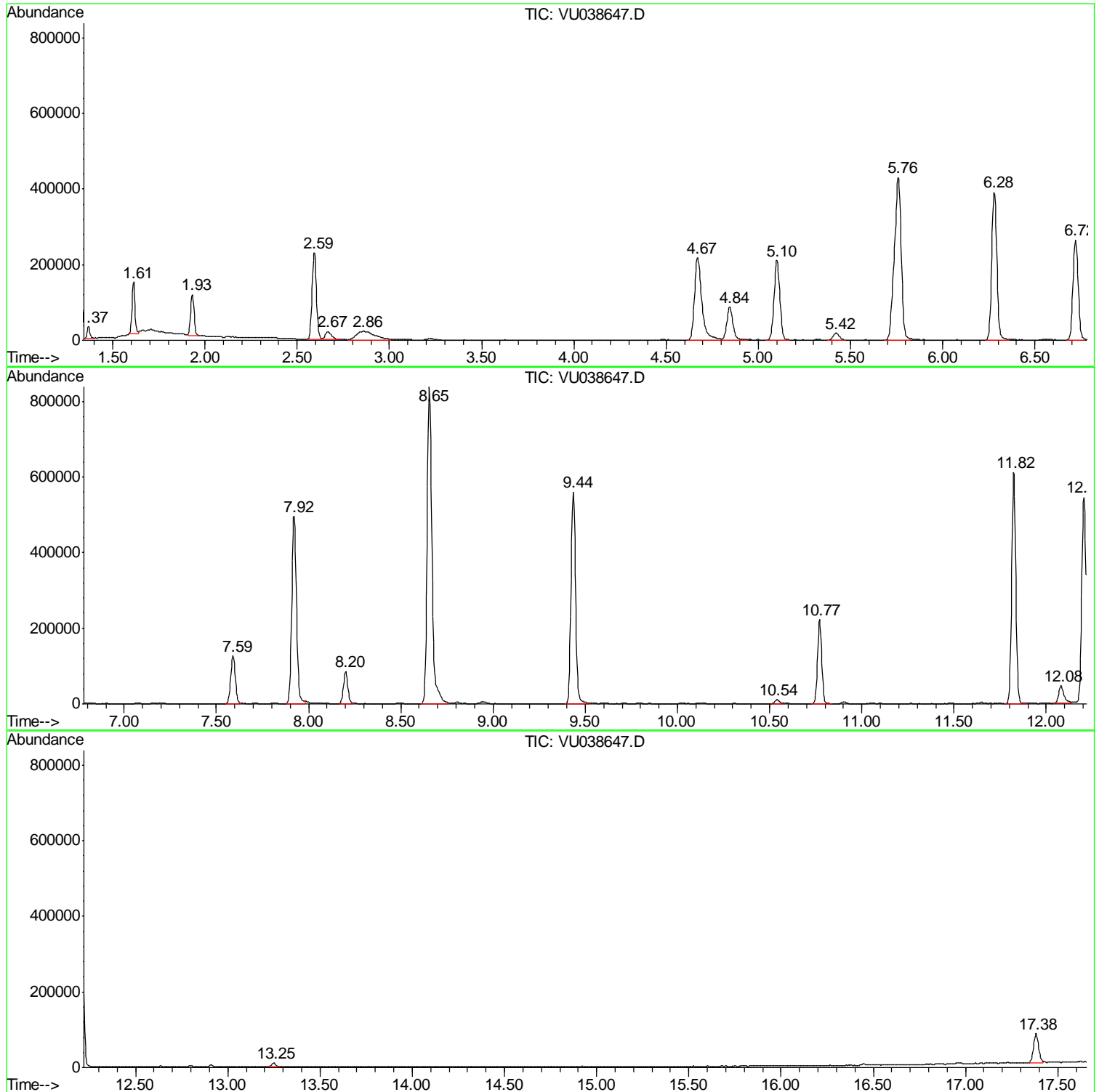
Sum of corrected areas: 10824245

Data Path : Z:\VOASRV\HPCHEM1\MSVOA U\DATA\VU060620\  
Data File : VU038647.D  
Acq On : 07 Jun 2020 04:02  
Operator : SY/MD  
Sample : L2911-10  
Misc : 25.0mL/MSVOA U/WATER  
ALS Vial : 1 Sample Multiplier: 1

Instrument :  
MSVOA\_U  
ClientSampled :  
F9D35

Quant Method : Z:\VOASRV\HPCHEM1\MSVOA\_U\METHOD\SOMUTR053120WMA.M  
Quant Title : TRACE VOA SOM01.0

TIC Library : C:\DATABASE\NIST11.L  
TIC Integration Parameters: LSCINT.P



Data Path : Z:\VOASRV\HPCHEM1\MSVOA U\DATA\VU060620\  
 Data File : VU038647.D  
 Acq On : 07 Jun 2020 04:02  
 Operator : SY/MD  
 Sample : L2911-10  
 Misc : 25.0mL/MSVOA U/WATER  
 ALS Vial : 1 Sample Multiplier: 1

Instrument :  
 MSVOA\_U  
 ClientSampled :  
 F9D35

Quant Method : Z:\VOASRV\HPCHEM1\MSVOA\_U\METHOD\SOMUTR053120WMA.M  
 Quant Title : TRACE VOA SOM01.0

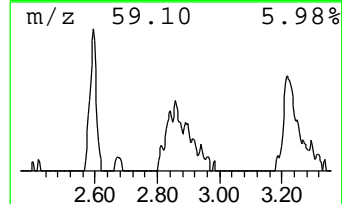
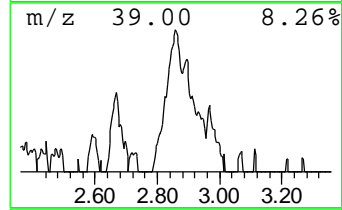
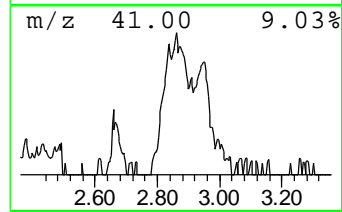
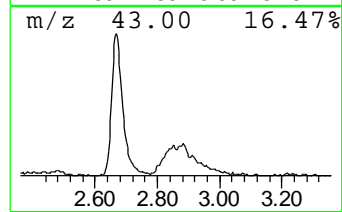
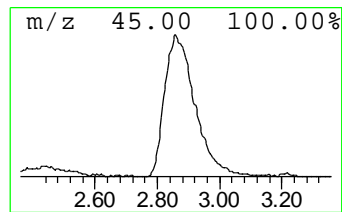
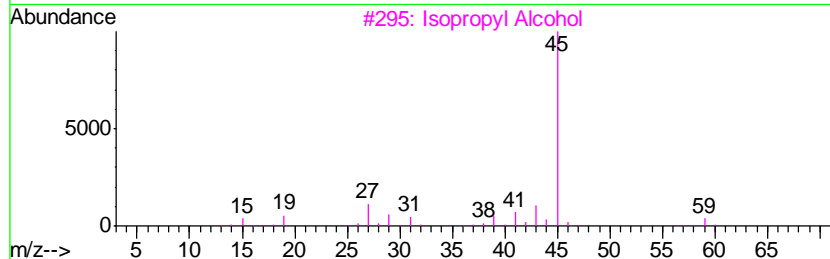
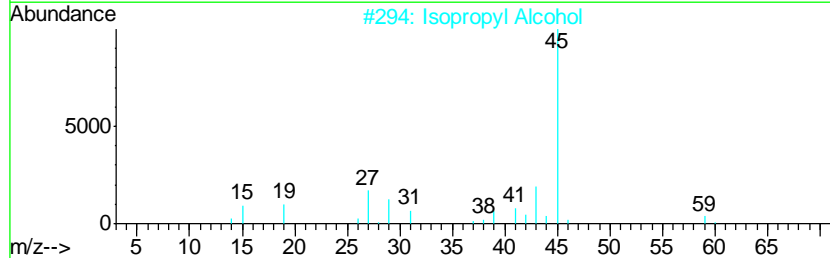
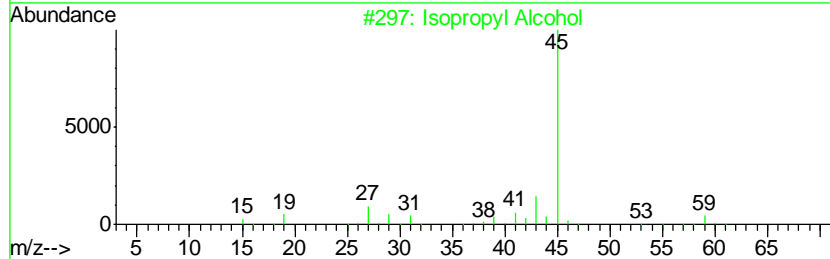
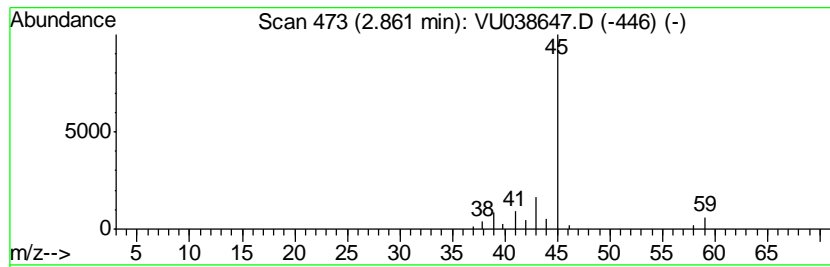
TIC Library : C:\DATABASE\NIST11.L  
 TIC Integration Parameters: LSCINT.P

\*\*\*\*\*  
 Peak Number 1 Isopropyl Alcohol Concentration Rank 3

R.T.	EstConc	Area	Relative to ISTD	R.T.
2.86	1.03 ug/L	156898	1,4-Difluorobenzene	6.28

Hit#	of	Tentative ID	MW	MolForm	CAS#	Qual
1	5	Isopropyl Alcohol	60	C3H8O	000067-63-0	64
2		Isopropyl Alcohol	60	C3H8O	000067-63-0	64
3		Isopropyl Alcohol	60	C3H8O	000067-63-0	9
4		4-Penten-2-ol	86	C5H10O	000625-31-0	9
5		Formamide	45	CH3NO	000075-12-7	7



Data Path : Z:\VOASRV\HPCHEM1\MSVOA U\DATA\VU060620\  
 Data File : VU038647.D  
 Acq On : 07 Jun 2020 04:02  
 Operator : SY/MD  
 Sample : L2911-10  
 Misc : 25.0mL/MSVOA U/WATER  
 ALS Vial : 1 Sample Multiplier: 1

Instrument :  
 MSVOA\_U  
 ClientSampled :  
 F9D35

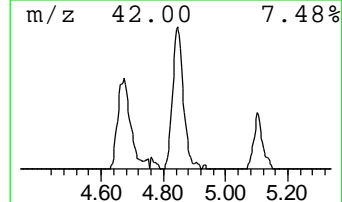
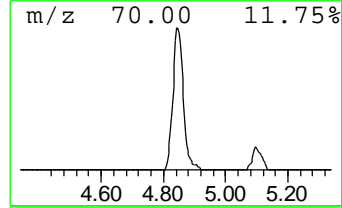
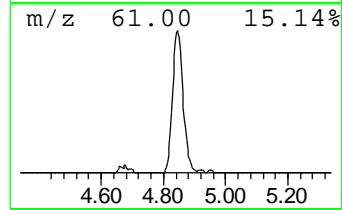
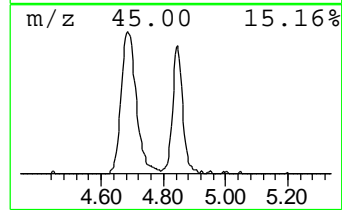
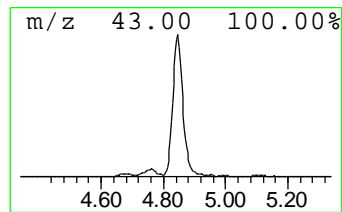
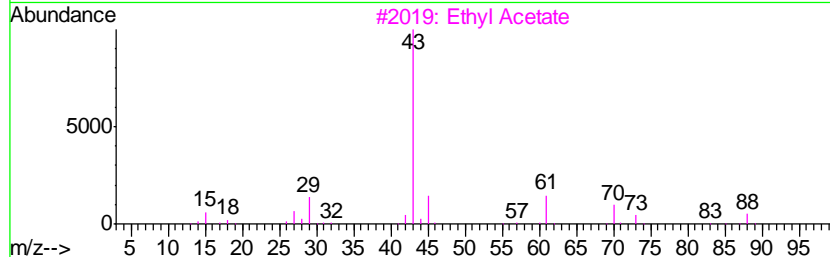
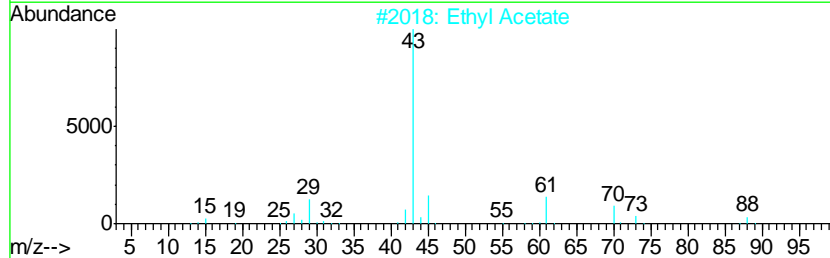
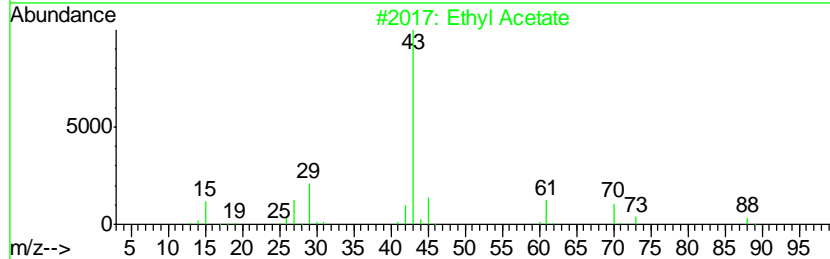
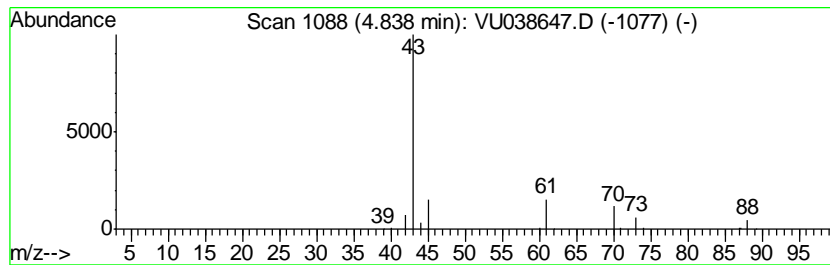
Quant Method : Z:\VOASRV\HPCHEM1\MSVOA\_U\METHOD\SOMUTR053120WMA.M  
 Quant Title : TRACE VOA SOM01.0

TIC Library : C:\DATABASE\NIST11.L  
 TIC Integration Parameters: LSCINT.P

\*\*\*\*\*  
 Peak Number 2 Ethyl Acetate Concentration Rank 2

R.T.	EstConc	Area	Relative to ISTD	R.T.
4.84	1.30 ug/L	197148	1,4-Difluorobenzene	6.28

Hit#	of	Tentative ID	MW	MolForm	CAS#	Qual
1	5	Ethyl Acetate	88	C4H8O2	000141-78-6	90
2		Ethyl Acetate	88	C4H8O2	000141-78-6	90
3		Ethyl Acetate	88	C4H8O2	000141-78-6	90
4		Ethyl Acetate	88	C4H8O2	000141-78-6	86
5		CH3C(O)CH2CH2OH	88	C4H8O2	000590-90-9	40



Data Path : Z:\VOASRV\HPCHEM1\MSVOA U\DATA\VU060620\  
 Data File : VU038647.D  
 Acq On : 07 Jun 2020 04:02  
 Operator : SY/MD  
 Sample : L2911-10  
 Misc : 25.0mL/MSVOA U/WATER  
 ALS Vial : 1 Sample Multiplier: 1

Instrument :  
 MSVOA\_U  
 ClientSampled :  
 F9D35

Quant Method : Z:\VOASRV\HPCHEM1\MSVOA\_U\METHOD\SOMUTR053120WMA.M  
 Quant Title : TRACE VOA SOM01.0

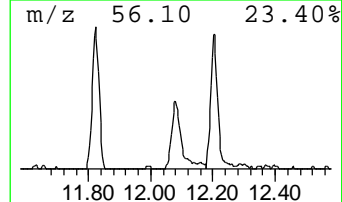
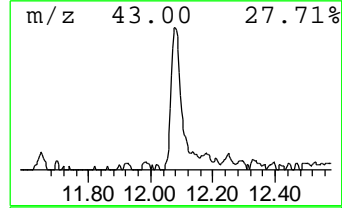
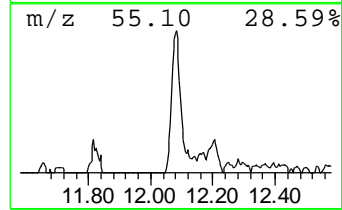
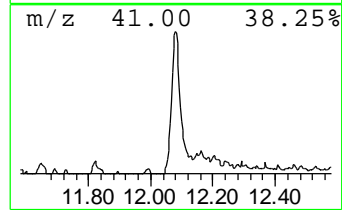
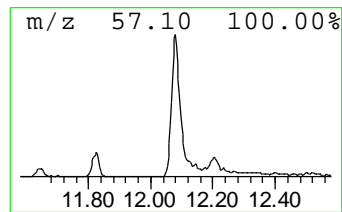
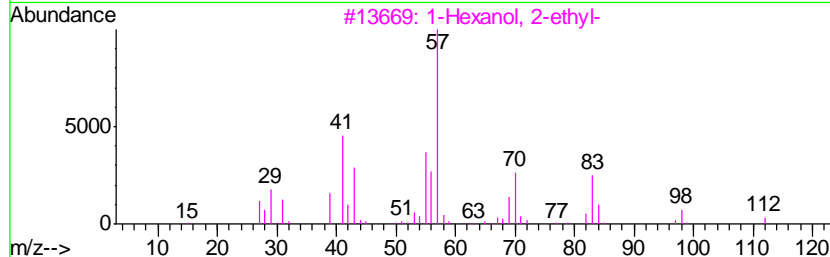
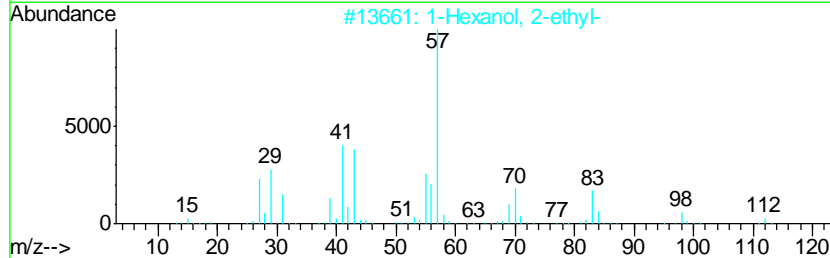
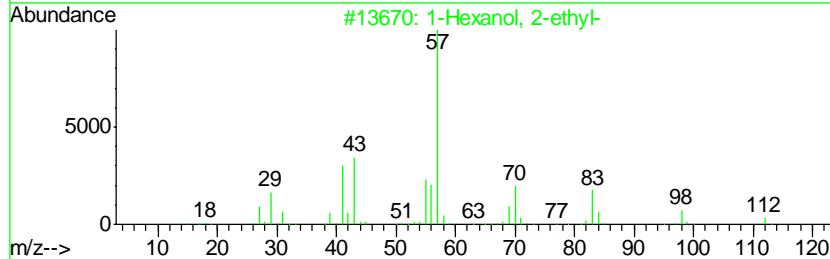
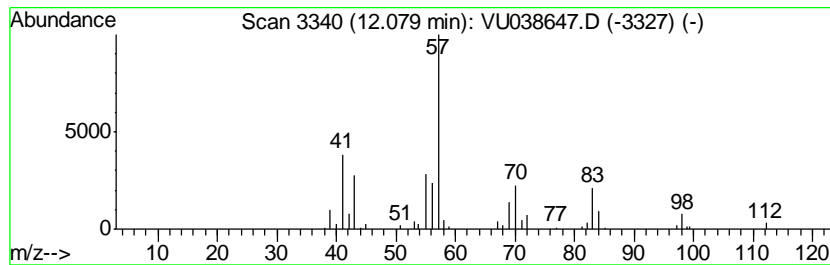
TIC Library : C:\DATABASE\NIST11.L  
 TIC Integration Parameters: LSCINT.P

\*\*\*\*\*  
 Peak Number 4 1-Hexanol, 2-ethyl- Concentration Rank 5

R.T.	EstConc	Area	Relative to ISTD	R.T.
12.08	0.51 ug/L	98626	1,4-Dichlorobenzene-d4	11.83

Hit#	of	Tentative ID	MW	MolForm	CAS#	Qual
1	5	1-Hexanol, 2-ethyl-	130	C8H18O	000104-76-7	83
2		1-Hexanol, 2-ethyl-	130	C8H18O	000104-76-7	83
3		1-Hexanol, 2-ethyl-	130	C8H18O	000104-76-7	64
4		1-Hexanol, 2-ethyl-	130	C8H18O	000104-76-7	64
5		2-Propyl-1-pentanol	130	C8H18O	058175-57-8	53



Data Path : Z:\VOASRV\HPCHEM1\MSVOA U\DATA\VU060620\  
 Data File : VU038647.D  
 Acq On : 07 Jun 2020 04:02  
 Operator : SY/MD  
 Sample : L2911-10  
 Misc : 25.0mL/MSVOA U/WATER  
 ALS Vial : 1 Sample Multiplier: 1

Instrument :  
 MSVOA\_U  
 ClientSampleID :  
 F9D35

Quant Method : Z:\VOASRV\HPCHEM1\MSVOA\_U\METHOD\SOMUTR053120WMA.M  
 Quant Title : TRACE VOA SOM01.0

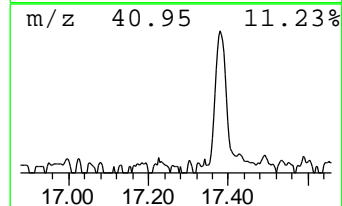
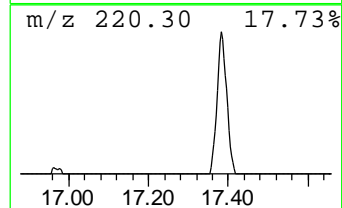
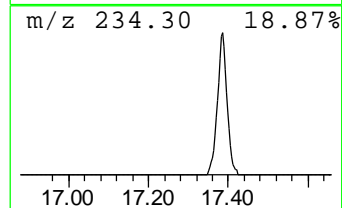
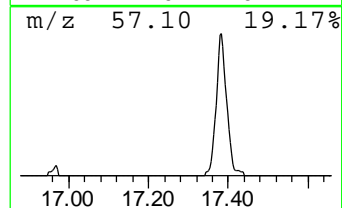
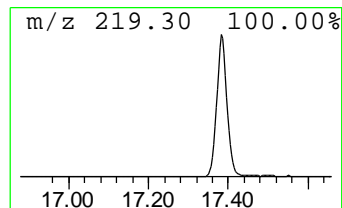
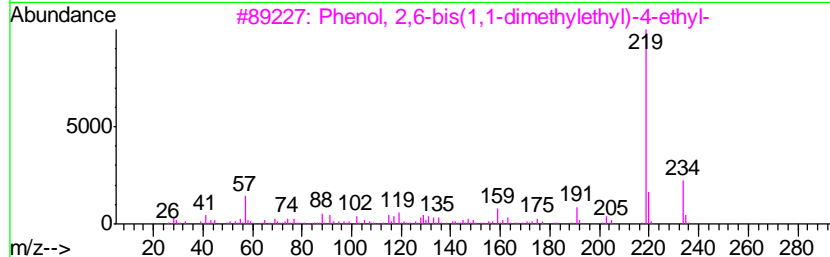
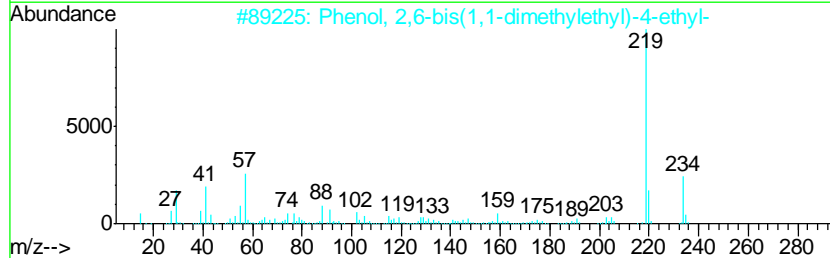
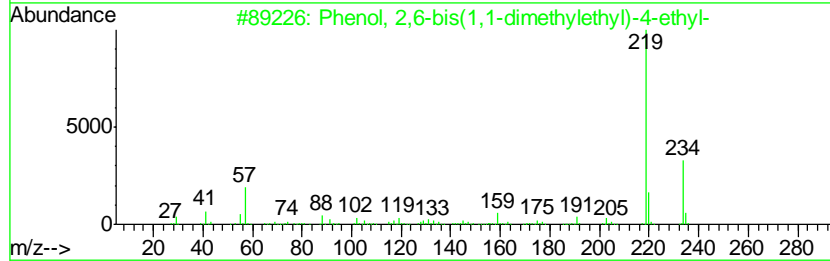
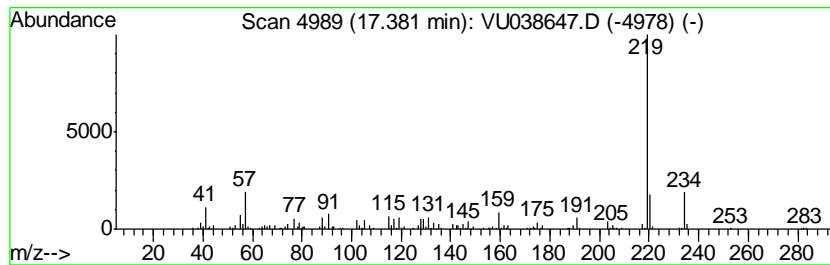
TIC Library : C:\DATABASE\NIST11.L  
 TIC Integration Parameters: LSCINT.P

\*\*\*\*\*  
 Peak Number 5 Phenol, 2,6-bis(1,1-dimethy... Concentration Rank 4

R.T.	EstConc	Area	Relative to ISTD	R.T.
17.38	0.76 ug/L	145916	1,4-Dichlorobenzene-d4	11.83

Hit#	of	Tentative ID	MW	MolForm	CAS#	Qual
1	5	Phenol, 2,6-bis(1,1-dimethylethy...	234	C16H26O	004130-42-1	96
2		Phenol, 2,6-bis(1,1-dimethylethy...	234	C16H26O	004130-42-1	93
3		Phenol, 2,6-bis(1,1-dimethylethy...	234	C16H26O	004130-42-1	90
4		4-tert-Butyl-2,6-diisopropylphenol	234	C16H26O	057354-65-1	87
5		3,5-di-tert-Butyl-4-hydroxybenza...	234	C15H22O2	001620-98-0	81



Data Path : Z:\VOASRV\HPCHEM1\MSVOA\_U\DATA\VU060620\  
Data File : VU038647.D  
Acq On : 07 Jun 2020 04:02  
Operator : SY/MD  
Sample : L2911-10  
Misc : 25.0mL/MSVOA\_U/WATER  
ALS Vial : 1 Sample Multiplier: 1

Instrument :  
MSVOA\_U  
ClientSampleId :  
F9D35

Quant Method : Z:\VOASRV\HPCHEM1\MSVOA\_U\METHOD\SOMUTR053120WMA.M  
Quant Title : TRACE VOA SOM01.0

TIC Library : C:\DATABASE\NIST11.L  
TIC Integration Parameters: LSCINT.P

TIC Top Hit name	RT	EstConc	Units	Response	--Internal Standard--			
					#	RT	Resp	Conc
Isopropyl Alcohol	2.86	1.0	ug/L	156898	1	6.28	760556	5.0
Ethyl Acetate	4.84	1.3	ug/L	197148	1	6.28	760556	5.0
1-Hexanol, 2-ethyl-	12.08	0.5	ug/L	98626	3	11.83	960073	5.0
Phenol, 2,6-bis(1...	17.38	0.8	ug/L	145916	3	11.83	960073	5.0