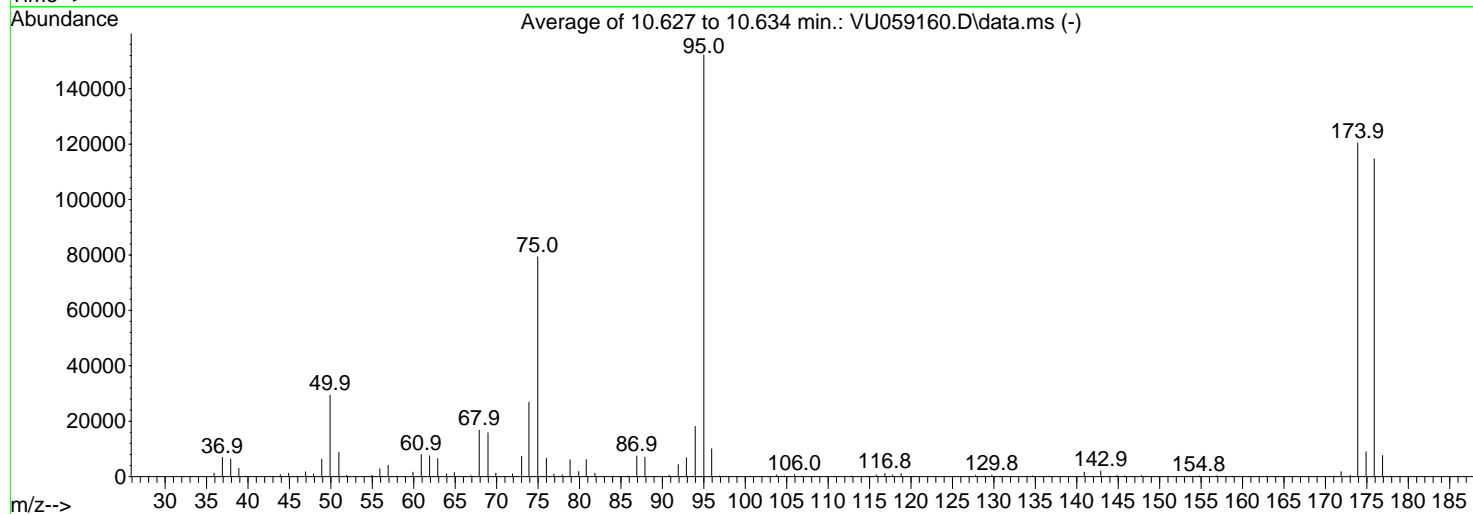
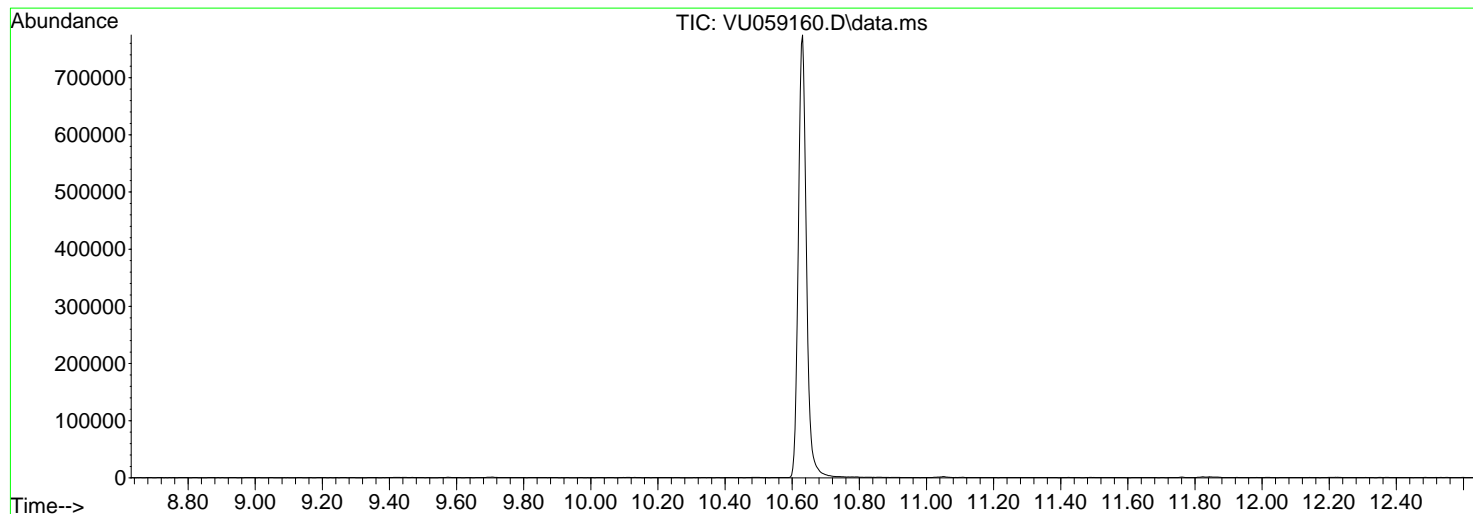


Data Path : Z:\voasrv\HPCHEM1\MSVOA_U\Data\VU060624\
 Data File : VU059160.D
 Acq On : 06 Jun 2024 11:24
 Operator : MD/SY
 Sample : BFB060
 Misc : 5.0mL/MSVOA_U/WATER
 ALS Vial : 1 Sample Multiplier: 1

Instrument :
 MSVOA_U
 ClientSampleId :
 BFB060

Integration File: LSCINT.P

Method : Z:\voasrv\HPCHEM1\MSVOA_U\Method\SFAMULM052924WMA.M
 Title : VOC Analysis
 Last Update : Fri Jun 07 05:05:14 2024



AutoFind: Scans 2904, 2905, 2906; Background Corrected with Scan 2891

Target Mass	Rel. to Mass	Lower Limit%	Upper Limit%	Rel. Abn%	Raw Abn	Result Pass/Fail
50	95	15	40	19.3	29379	PASS
75	95	30	80	52.1	79347	PASS
95	95	100	100	100.0	152213	PASS
96	95	5	9	6.6	10071	PASS
173	174	0.00	2	0.5	545	PASS
174	95	50	120	79.1	120427	PASS
175	174	5	9	7.4	8944	PASS
176	174	95	101	95.2	114664	PASS
177	176	5	9	6.6	7611	PASS

m/z	Abundance
39.70	142.0
43.90	438.0

Instrument :
MSVOA_U
ClientSampleId :
BFB060

m/z	Abundance
35.90	1191.0
36.90	6940.0
37.90	6632.0
38.90	2956.0
39.80	320.0
43.90	1202.0
44.90	1343.0
45.80	192.0
47.00	1621.0
47.90	994.0
48.90	6405.0
49.90	30096.0
50.90	9276.0
51.90	490.0
52.90	241.0
55.00	508.0
55.90	2947.0
56.90	4141.0
57.90	184.0
59.90	1741.0
60.90	8120.0
61.90	7832.0
62.90	6664.0
64.00	1104.0
64.90	1596.0
65.90	140.0
66.80	384.0
67.90	17352.0
68.90	16245.0
69.90	1315.0
71.90	1019.0
73.00	7714.0
73.90	27912.0
75.00	80616.0
76.00	6595.0
76.90	989.0
77.90	694.0
78.80	6151.0
79.90	1827.0
80.80	6276.0
81.90	1318.0
82.90	173.0
85.90	268.0
86.90	7456.0
87.90	7280.0
90.80	512.0
91.90	4179.0
92.90	6875.0
94.00	18304.0
95.00	154496.0
95.90	10631.0
96.90	338.0
103.80	668.0
104.70	251.0
106.00	666.0
106.80	219.0
109.80	194.0
110.80	195.0
112.00	128.0
112.80	154.0
114.80	203.0
115.80	598.0
116.90	1223.0
117.80	629.0
118.80	1152.0
127.80	552.0
128.90	228.0
129.80	620.0
130.70	208.0
134.70	362.0
136.70	243.0
140.90	1630.0
142.10	238.0
142.90	2121.0
143.90	151.0
144.90	518.0
145.80	266.0
146.70	126.0
147.80	456.0
149.80	122.0
154.80	365.0
156.80	312.0
158.70	245.0
160.80	181.0
171.00	208.0
171.90	1798.0
173.90	119416.0
174.90	8864.0
175.90	113512.0
176.90	7753.0
177.90	208.0

Instrument :
MSVOA_U
ClientSampleId :
BFB060

m/z	Abundance
35.90	1273.0
36.90	7087.0
37.90	6545.0
38.90	3053.0
39.80	410.0
43.90	1244.0
44.90	1215.0
45.90	166.0
46.90	1856.0
47.90	935.0
48.90	6559.0
49.90	30216.0
51.00	8986.0
51.90	485.0
52.90	182.0
54.90	517.0
55.90	2952.0
56.90	4233.0
57.90	181.0
59.90	1678.0
60.90	8221.0
61.90	7742.0
62.90	6735.0
64.00	1069.0
64.90	1517.0
66.00	151.0
66.90	399.0
67.90	17480.0
69.00	16408.0
69.90	1379.0
71.90	1032.0
73.00	7504.0
73.90	27664.0
75.00	81864.0
76.00	6853.0
76.90	916.0
77.90	704.0
78.90	6274.0
79.90	1887.0
80.80	6372.0
81.80	1301.0
82.90	182.0
85.80	247.0
86.90	7673.0
87.90	7311.0
90.80	542.0
91.90	4480.0
92.90	7021.0
93.90	18672.0
95.00	157184.0
95.90	10362.0
96.90	321.0
103.80	680.0
104.70	281.0
105.90	691.0
106.70	171.0
109.90	189.0
110.70	174.0
112.80	165.0
114.80	207.0
115.80	615.0
116.90	1212.0
117.80	663.0
118.80	1147.0
127.80	554.0
128.90	204.0
129.80	570.0
130.70	247.0
134.70	365.0
136.70	243.0
140.90	1677.0
141.90	208.0
142.90	2164.0
143.90	154.0
144.80	513.0
145.80	273.0
147.80	496.0
149.90	142.0
154.70	380.0
156.80	324.0
158.70	234.0
160.80	170.0
171.10	223.0
171.90	1843.0
173.90	124296.0
174.90	9248.0
175.90	118560.0
176.90	7827.0
177.90	232.0

Instrument :
MSVOA_U
ClientSampleId :
BFB060

m/z	Abundance
35.90	1244.0
36.90	6736.0
37.90	5873.0
38.90	2771.0
39.80	409.0
43.90	1178.0
44.90	1104.0
45.90	156.0
46.90	1763.0
47.90	785.0
48.90	5987.0
49.90	27824.0
51.00	8129.0
51.90	484.0
52.80	105.0
54.90	442.0
55.90	2658.0
56.90	3926.0
57.90	146.0
59.90	1504.0
60.90	7513.0
61.90	6977.0
62.90	6150.0
63.90	966.0
64.90	1435.0
66.00	135.0
67.00	411.0
67.90	15685.0
68.90	15056.0
69.90	1207.0
71.90	889.0
73.00	6819.0
73.90	24896.0
74.90	75560.0
76.00	6534.0
76.90	924.0
77.90	625.0
78.90	5815.0
79.90	1763.0
80.80	5913.0
81.80	1176.0
82.90	181.0
85.80	220.0
86.90	7187.0
87.90	6447.0
90.80	503.0
91.90	4282.0
92.90	6561.0
93.90	17432.0
95.00	144960.0
96.00	9221.0
96.90	257.0
103.80	649.0
104.70	256.0
105.90	695.0
106.80	134.0
109.90	113.0
110.80	164.0
112.80	159.0
114.80	157.0
115.80	616.0
116.80	1111.0
117.80	583.0
118.80	966.0
127.80	504.0
128.90	183.0
129.70	470.0
130.80	251.0
134.70	299.0
136.70	207.0
140.90	1565.0
141.80	175.0
142.90	2023.0
143.90	142.0
144.80	533.0
145.80	267.0
147.80	442.0
149.90	167.0
154.70	300.0
156.90	305.0
158.80	169.0
160.80	185.0
171.10	207.0
171.90	1805.0
173.00	1634.0
173.90	117568.0
174.90	8721.0
175.90	111920.0
176.90	7252.0
177.90	236.0

Instrument :
MSVOA_U
ClientSampleId :
BFB060