

Data Path : Z:\voasrv\HPCHEM1\MSVOA_U\Data\VU061024\
 Data File : VU059197.D
 Acq On : 10 Jun 2024 10:25
 Operator : MD/SY
 Sample : VU0610MBL01
 Misc : 5.00g/5.0mL/100uL/5.0mL/MSVOA_U/MEOH
 ALS Vial : 4 Sample Multiplier: 1

Instrument :
 MSVOA_U
 ClientSampleId :
 VBLK071

Integration Parameters: LSCINT.P

Integrator: RTE
 Smoothing : OFF
 Sampling : 1
 Start Thrs : 0.2
 Stop Thrs : 0

Filtering: 5
 Min Area: 0 % of largest Peak
 Max Peaks: 100
 Peak Location: TOP

If leading or trailing edge < 100 prefer < Baseline drop else tangent >
 Peak separation: 5

Method : Z:\voasrv\HPCHEM1\MSVOA_U\Method\SFAMULM052924WMA.M
 Title : VOC Analysis

Signal : TIC: VU059197.D\data.ms

peak #	R.T. min	first scan	max scan	last scan	PK TY	peak height	corr. area	corr. % max.	% of total
1	1.592	87	94	115	rVB	104586	139330	14.29%	1.715%
2	1.882	140	184	203	rBV2	146675	433720	44.50%	5.337%
3	2.554	380	393	410	rBV	201822	323623	33.20%	3.983%
4	2.711	439	442	447	rBV2	299	372	0.04%	0.005%
5	2.779	453	463	473	rVB3	2631	4586	0.47%	0.056%
6	3.029	534	541	552	rVB3	2352	3977	0.41%	0.049%
7	3.168	578	584	598	rVB3	791	1625	0.17%	0.020%
8	3.348	634	640	642	rBV2	757	805	0.08%	0.010%
9	3.386	647	652	658	rBV2	251	358	0.04%	0.004%
10	3.438	665	668	675	rBV2	299	253	0.03%	0.003%
11	3.509	685	690	692	rBV	325	241	0.02%	0.003%
12	3.718	751	755	762	rVB	480	445	0.05%	0.005%
13	3.759	762	768	772	rBV2	241	331	0.03%	0.004%
14	3.808	780	783	787	rBV	295	266	0.03%	0.003%
15	3.920	815	818	823	rVB2	301	288	0.03%	0.004%
16	3.955	823	829	830	rBV	272	267	0.03%	0.003%
17	4.248	917	920	928	rVV2	312	297	0.03%	0.004%
18	4.447	978	982	990	rVV2	260	354	0.04%	0.004%
19	4.512	999	1002	1008	rBV2	263	250	0.03%	0.003%
20	4.611	1022	1033	1062	rBV	84294	219622	22.53%	2.703%
21	4.968	1142	1144	1148	rVB2	396	228	0.02%	0.003%
22	4.997	1148	1153	1154	rBV	260	216	0.02%	0.003%
23	5.052	1154	1170	1199	rVV	170524	377511	38.73%	4.646%
24	5.200	1213	1216	1220	rVB	443	401	0.04%	0.005%
25	5.412	1278	1282	1286	rVB2	337	330	0.03%	0.004%
26	5.441	1286	1291	1295	rBV2	295	221	0.02%	0.003%
27	5.483	1298	1304	1306	rBV	346	287	0.03%	0.004%
28	5.502	1306	1310	1314	rBV2	235	251	0.03%	0.003%
29	5.611	1341	1344	1347	rVB2	369	276	0.03%	0.003%
30	5.634	1347	1351	1356	rBV	362	369	0.04%	0.005%
31	5.714	1356	1376	1402	rBV2	363482	974722	100.00%	11.995%
32	5.840	1413	1415	1420	rVB2	381	287	0.03%	0.004%
33	5.936	1439	1445	1452	rVB3	417	707	0.07%	0.009%
34	6.238	1527	1539	1571	rBV	357325	694711	71.27%	8.549%
35	6.348	1571	1573	1579	rVB2	850	711	0.07%	0.009%
36	6.525	1619	1628	1642	rVB5	4533	9811	1.01%	0.121%

Data Path : Z:\voasrv\HPCHEM1\MSVOA_U\Data\VU061024\
 Data File : VU059197.D
 Acq On : 10 Jun 2024 10:25
 Operator : MD/SY
 Sample : VU0610MBL01
 Misc : 5.00g/5.0mL/100uL/5.0mL/MSVOA_U/MEOH
 ALS Vial : 4 Sample Multiplier: 1

Instrument :
 MSVOA_U
 ClientSampleId :
 VBLK071

Integration Parameters: LSCINT.P

Integrator: RTE
 Smoothing : OFF Filtering: 5
 Sampling : 1 Min Area: 0 % of largest Peak
 Start Thrs: 0.2 Max Peaks: 100
 Stop Thrs : 0 Peak Location: TOP

If leading or trailing edge < 100 prefer < Baseline drop else tangent >
 Peak separation: 5

Method : Z:\voasrv\HPCHEM1\MSVOA_U\Method\SFAMULM052924WMA.M
 Title : VOC Analysis

37	6.682	1658	1677	1704	rBV	215590	431825	44.30%	5.314%
38	6.798	1710	1713	1716	rBV3	538	380	0.04%	0.005%
39	6.869	1731	1735	1738	rBV2	257	216	0.02%	0.003%
40	7.132	1813	1817	1821	rVB2	363	338	0.03%	0.004%
41	7.190	1826	1835	1836	rBV2	1973	2023	0.21%	0.025%
42	7.277	1859	1862	1866	rVB2	321	231	0.02%	0.003%
43	7.354	1882	1886	1891	rBV2	436	429	0.04%	0.005%
44	7.386	1891	1896	1898	rVV2	266	304	0.03%	0.004%
45	7.496	1924	1930	1933	rBV	238	295	0.03%	0.004%
46	7.557	1938	1949	1973	rVV	109934	202484	20.77%	2.492%
47	7.695	1988	1992	1993	rBV	1030	649	0.07%	0.008%
48	7.785	2016	2020	2021	rBV2	581	330	0.03%	0.004%
49	7.891	2037	2053	2074	rBV	433213	760594	78.03%	9.360%
50	8.174	2130	2141	2162	rVV	74851	130885	13.43%	1.611%
51	8.280	2170	2174	2179	rVB4	498	506	0.05%	0.006%
52	8.460	2224	2230	2232	rBV2	448	459	0.05%	0.006%
53	8.547	2254	2257	2262	rVB2	763	611	0.06%	0.008%
54	8.582	2262	2268	2271	rBV2	235	249	0.03%	0.003%
55	8.627	2271	2282	2322	rBV	239551	497161	51.01%	6.118%
56	8.798	2333	2335	2338	rVB2	598	372	0.04%	0.005%
57	8.814	2338	2340	2342	rBV	441	238	0.02%	0.003%
58	8.891	2362	2364	2367	rVB2	407	219	0.02%	0.003%
59	8.926	2371	2375	2378	rBV3	621	371	0.04%	0.005%
60	9.036	2406	2409	2414	rVB2	403	278	0.03%	0.003%
61	9.116	2430	2434	2439	rVB2	269	273	0.03%	0.003%
62	9.151	2439	2445	2447	rBV	211	230	0.02%	0.003%
63	9.277	2479	2484	2489	rBV2	253	302	0.03%	0.004%
64	9.412	2510	2526	2550	rBV	502102	849101	87.11%	10.449%
65	9.698	2606	2615	2623	rBV5	934	1762	0.18%	0.022%
66	9.749	2628	2631	2635	rVB	336	231	0.02%	0.003%
67	9.778	2635	2640	2644	rBV2	381	416	0.04%	0.005%
68	10.026	2713	2717	2723	rVB	409	381	0.04%	0.005%
69	10.055	2723	2726	2731	rBV2	220	223	0.02%	0.003%
70	10.094	2735	2738	2739	rBV3	417	259	0.03%	0.003%
71	10.106	2739	2742	2746	rVV2	538	460	0.05%	0.006%
72	10.129	2746	2749	2752	rVB3	322	250	0.03%	0.003%
73	10.643	2903	2909	2917	rBV5	744	1102	0.11%	0.014%
74	10.749	2929	2942	2961	rBV	324445	529049	54.28%	6.511%
75	11.093	3045	3049	3052	rBV2	339	327	0.03%	0.004%
76	11.196	3077	3081	3084	rBV2	380	363	0.04%	0.004%

Data Path : Z:\voasrv\HPCHEM1\MSVOA_U\Data\VU061024\
 Data File : VU059197.D
 Acq On : 10 Jun 2024 10:25
 Operator : MD/SY
 Sample : VU0610MBL01
 Misc : 5.00g/5.0mL/100uL/5.0mL/MSVOA_U/MEOH
 ALS Vial : 4 Sample Multiplier: 1

Instrument :
 MSVOA_U
 ClientSampleId :
 VBLK071

Integration Parameters: LSCINT.P

Integrator: RTE
 Smoothing : OFF Filtering: 5
 Sampling : 1 Min Area: 0 % of largest Peak
 Start Thrs: 0.2 Max Peaks: 100
 Stop Thrs : 0 Peak Location: TOP

If leading or trailing edge < 100 prefer < Baseline drop else tangent >
 Peak separation: 5

Method : Z:\voasrv\HPCHEM1\MSVOA_U\Method\SFAMULM052924WMA.M
 Title : VOC Analysis

77	11.235	3090	3093	3097	rVB2	428	315	0.03%	0.004%
78	11.399	3141	3144	3147	rBV	321	245	0.03%	0.003%
79	11.643	3215	3220	3223	rBV2	438	331	0.03%	0.004%
80	11.746	3246	3252	3259	rBV4	1445	2159	0.22%	0.027%
81	11.807	3259	3271	3302	rBV	478342	806923	82.78%	9.930%
82	11.991	3326	3328	3332	rBV2	425	228	0.02%	0.003%
83	12.126	3367	3370	3373	rVB	342	231	0.02%	0.003%
84	12.187	3376	3389	3408	rBV	395750	675784	69.33%	8.316%
85	12.482	3477	3481	3484	rBV	338	250	0.03%	0.003%
86	12.765	3562	3569	3577	rBV4	658	1156	0.12%	0.014%
87	13.003	3640	3643	3648	rVB3	404	387	0.04%	0.005%
88	13.106	3672	3675	3678	rBV2	340	247	0.03%	0.003%
89	13.238	3710	3716	3718	rBV4	687	776	0.08%	0.010%
90	13.309	3734	3738	3741	rBV	285	277	0.03%	0.003%
91	13.408	3766	3769	3775	rVB3	488	363	0.04%	0.004%
92	13.643	3839	3842	3848	rVB2	508	451	0.05%	0.006%
93	13.672	3848	3851	3852	rBV2	369	219	0.02%	0.003%
94	13.849	3900	3906	3915	rBV6	2088	3342	0.34%	0.041%
95	13.997	3949	3952	3954	rBV2	404	231	0.02%	0.003%
96	14.100	3975	3984	3998	rBV	8593	16869	1.73%	0.208%
97	14.267	4033	4036	4040	rBV2	497	449	0.05%	0.006%
98	14.334	4050	4057	4066	rBV4	3169	3962	0.41%	0.049%
99	14.392	4071	4075	4079	rBV4	525	536	0.05%	0.007%
100	14.569	4122	4130	4138	rBV3	1105	2086	0.21%	0.026%

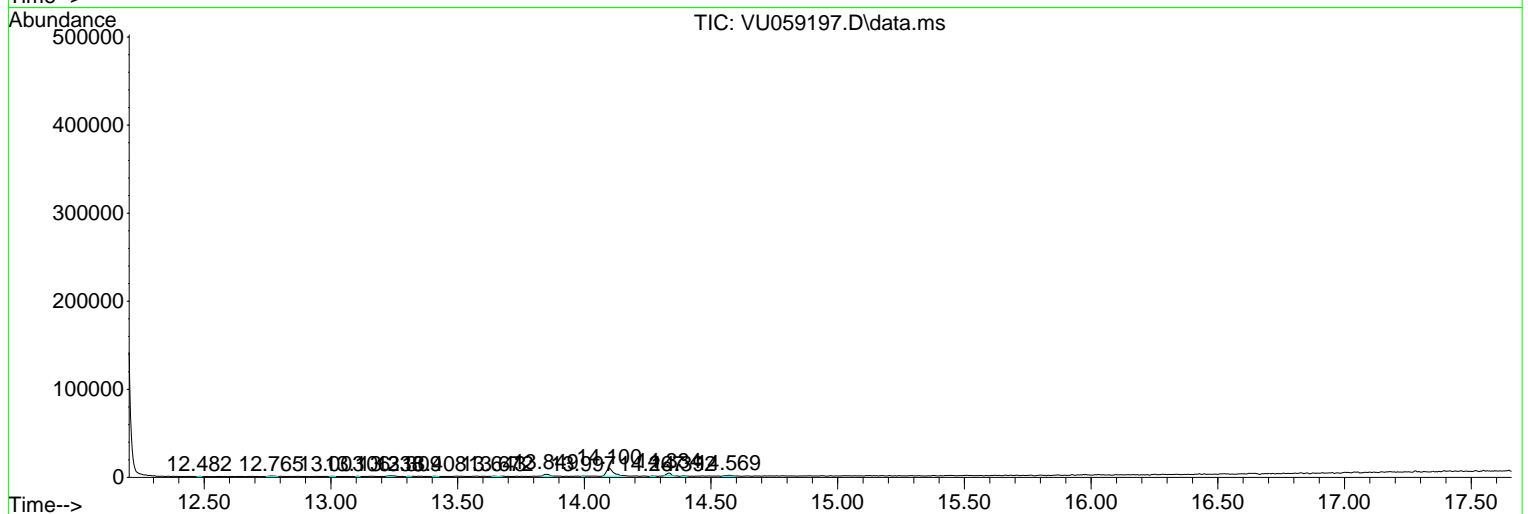
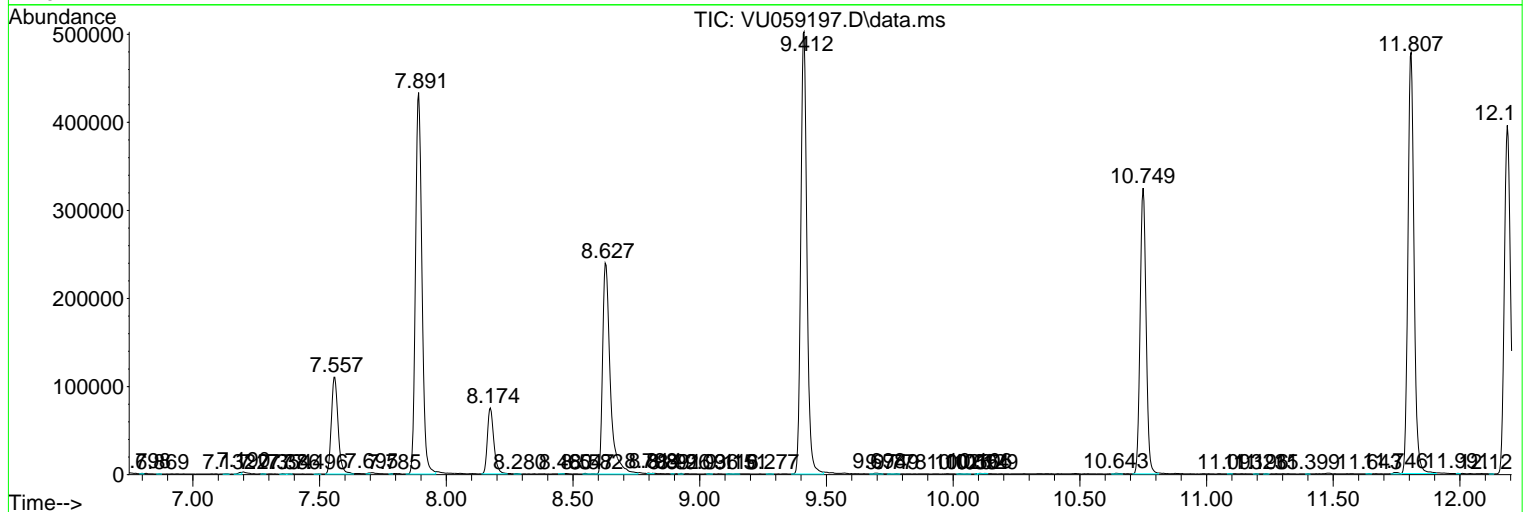
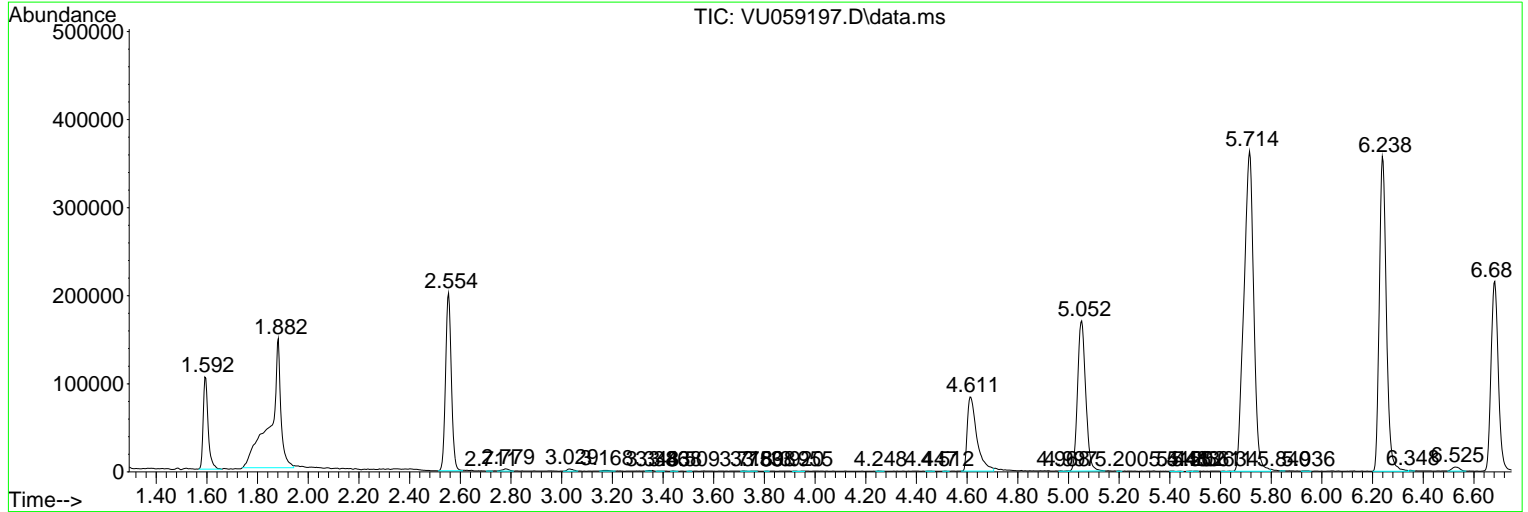
Sum of corrected areas: 8126042

Data Path : Z:\voasrv\HPCHEM1\MSVOA_U\Data\VU061024\
 Data File : VU059197.D
 Acq On : 10 Jun 2024 10:25
 Operator : MD/SY
 Sample : VU0610MBL01
 Misc : 5.00g/5.0mL/100uL/5.0mL/MSVOA_U/MEOH
 ALS Vial : 4 Sample Multiplier: 1

Instrument :
 MSVOA_U
ClientSampleId :
 VBLK071

Quant Method : Z:\voasrv\HPCHEM1\MSVOA_U\Method\SFAMULM052924WMA.M
 Quant Title : VOC Analysis

TIC Library : C:\Database\NIST20.L
 TIC Integration Parameters: LSCINT.P



Data Path : Z:\voasrv\HPCHEM1\MSVOA_U\Data\VU061024\
Data File : VU059197.D
Acq On : 10 Jun 2024 10:25
Operator : MD/SY
Sample : VU0610MBL01
Misc : 5.00g/5.0mL/100uL/5.0mL/MSVOA_U/MEOH
ALS Vial : 4 Sample Multiplier: 1

Instrument :
MSVOA_U
ClientSampleId :
VBLK071

Quant Method : Z:\voasrv\HPCHEM1\MSVOA_U\Method\SFAMULM052924WMA.M
Quant Title : VOC Analysis

TIC Library : C:\Database\NIST20.L
TIC Integration Parameters: LSCINT.P

No Library Search Compounds Detected

Data Path : Z:\voasrv\HPCHEM1\MSVOA_U\Data\VU061024\
Data File : VU059197.D
Acq On : 10 Jun 2024 10:25
Operator : MD/SY
Sample : VU0610MBL01
Misc : 5.00g/5.0mL/100uL/5.0mL/MSVOA_U/MEOH
ALS Vial : 4 Sample Multiplier: 1

Instrument :
MSVOA_U
ClientSampleId :
VBLK071

Quant Method : Z:\voasrv\HPCHEM1\MSVOA_U\Method\SFAMULM052924WMA.M
Quant Title : VOC Analysis

TIC Library : C:\Database\NIST20.L
TIC Integration Parameters: LSCINT.P

TIC Top Hit name	RT	EstConc	Units	Response	--Internal Standard--		
					#	RT	Resp Conc
