

Data Path : Z:\VOASRV\HPCHEM1\MSVOA U\DATA\VU062018\
 Data File : VU024794.D
 Acq On : 21 Jun 2018 06:53
 Operator : MD/SY
 Sample : J3585-13
 Misc : 5.0mL/MSVOA U/WATER
 ALS Vial : 49 Sample Multiplier: 1

Instrument :
 MSVOA_U
 ClientSampleId :
 CKMW07

Quant Time: Jun 21 10:23:20 2018
 Quant Method : Z:\VOASRV\HPCHEM1\MSVOA_U\METHOD\82U061318W.M
 Quant Title : SW846 8260
 QLast Update : Wed Jun 13 13:55:26 2018
 Response via : Initial Calibration

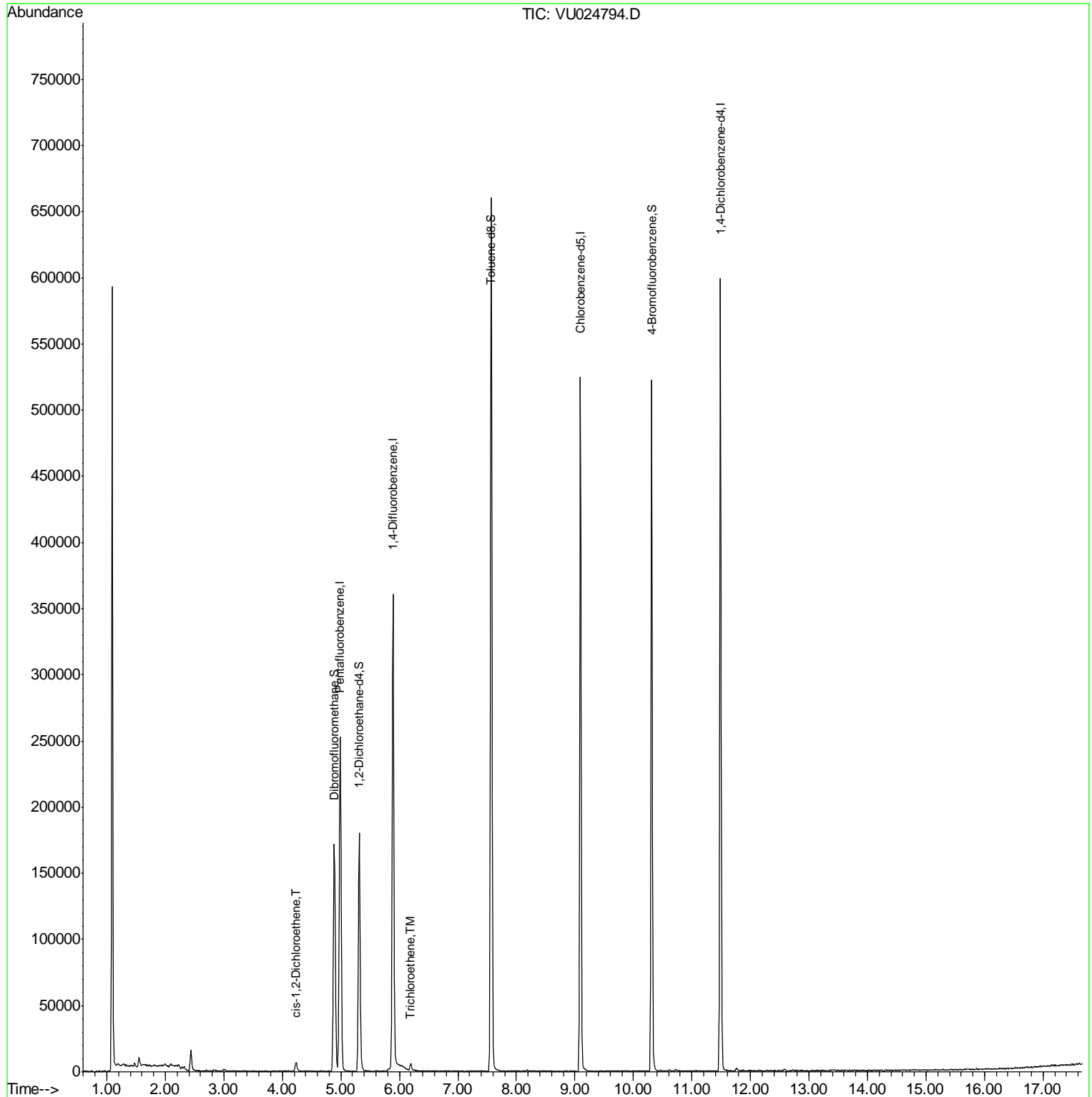
Internal Standards	R.T.	QIon	Response	Conc	Units	Dev(Min)
1) Pentafluorobenzene	4.99	168	200008	50.00	ug/l	0.00
34) 1,4-Difluorobenzene	5.89	114	305230	50.00	ug/l	0.00
63) Chlorobenzene-d5	9.09	117	285105	50.00	ug/l	0.00
72) 1,4-Dichlorobenzene-d4	11.49	152	155317	50.00	ug/l	0.00
System Monitoring Compounds						
33) 1,2-Dichloroethane-d4	5.31	65	140060	42.90	ug/l	0.00
Spiked Amount				50.000		
			Recovery	=	85.80%	
35) Dibromofluoromethane	4.89	113	119888	47.33	ug/l	0.00
Spiked Amount				50.000		
			Recovery	=	94.66%	
50) Toluene-d8	7.57	98	446168	48.29	ug/l	0.00
Spiked Amount				50.000		
			Recovery	=	96.58%	
62) 4-Bromofluorobenzene	10.31	95	165220	45.04	ug/l	0.00
Spiked Amount				50.000		
			Recovery	=	90.08%	
Target Compounds						
27) cis-1,2-Dichloroethene	4.24	96	4031	1.40	ug/l	83
44) Trichloroethene	6.19	130	2128	0.73	ug/l	78

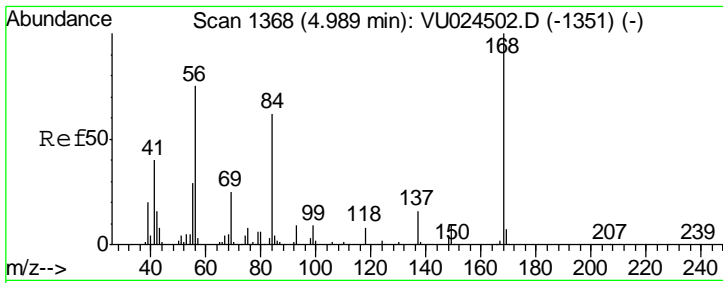
(#) = qualifier out of range (m) = manual integration (+) = signals summed

Data Path : Z:\VOASRV\HPCHEM1\MSVOA U\DATA\VU062018\
 Data File : VU024794.D
 Acq On : 21 Jun 2018 06:53
 Operator : MD/SY
 Sample : J3585-13
 Misc : 5.0mL/MSVOA U/WATER
 ALS Vial : 49 Sample Multiplier: 1

Instrument :
 MSVOA_U
 ClientSampleId :
 CKMW07

Quant Time: Jun 21 10:23:20 2018
 Quant Method : Z:\VOASRV\HPCHEM1\MSVOA_U\METHOD\82U061318W.M
 Quant Title : SW846 8260
 QLast Update : Wed Jun 13 13:55:26 2018
 Response via : Initial Calibration

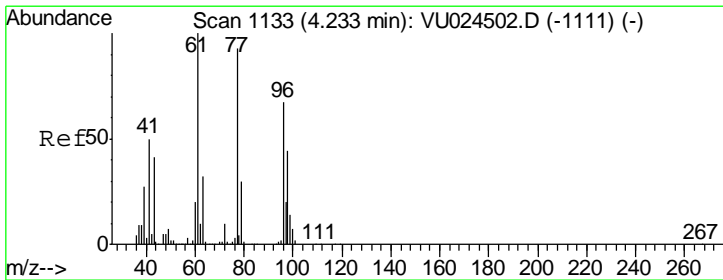
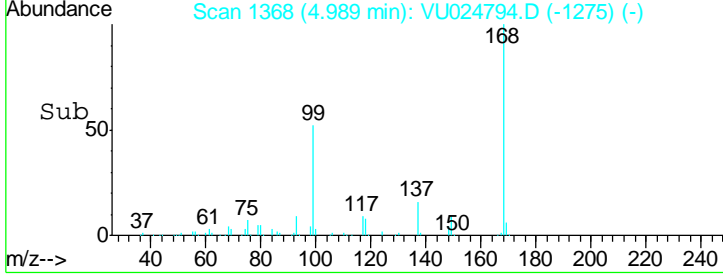
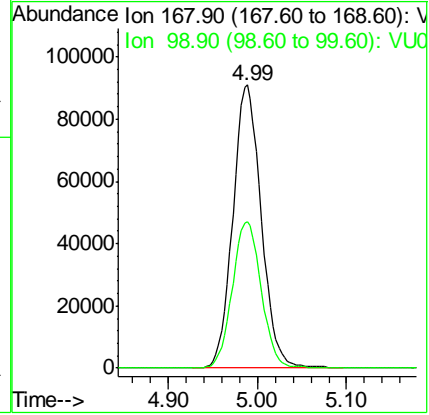
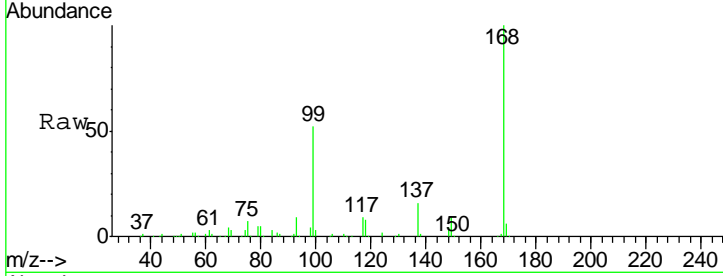




#1
 Pentafluorobenzene
 Concen: 50.00 ug/l
 RT: 4.99 min Scan# 1368
 Delta R.T. 0.00 min
 Lab File: VU024794.D
 Acq: 21 Jun 2018 06:53

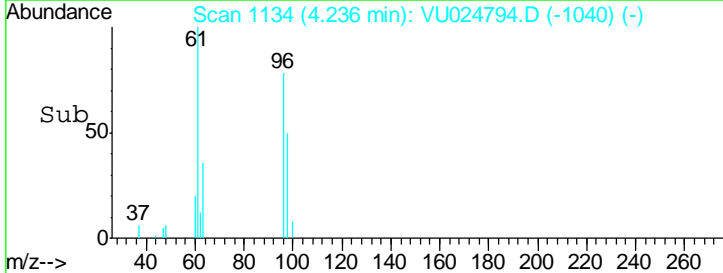
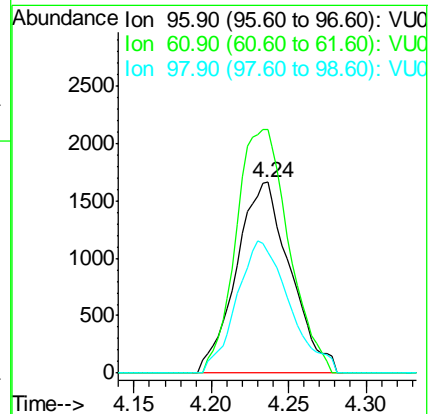
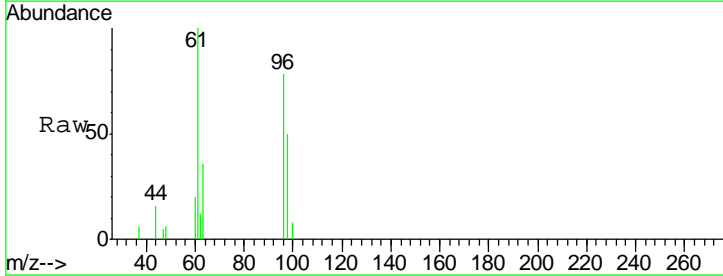
Instrument : MSVOA_U
 ClientSampled : CKMW07

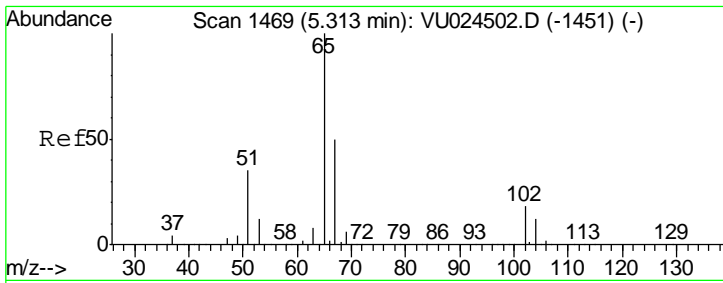
Tgt Ion	Resp	Lower	Upper
168	100		
99	51.8	43.2	64.8



#27
 cis-1,2-Dichloroethene
 Concen: 1.40 ug/l
 RT: 4.24 min Scan# 1134
 Delta R.T. 0.00 min
 Lab File: VU024794.D
 Acq: 21 Jun 2018 06:53

Tgt Ion	Resp	Lower	Upper
96	100		
61	124.9	0.0	306.6
98	67.6	0.0	128.8

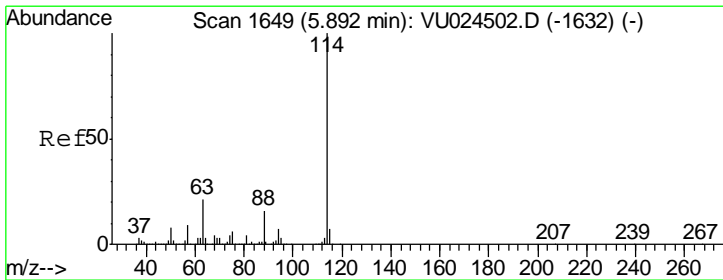
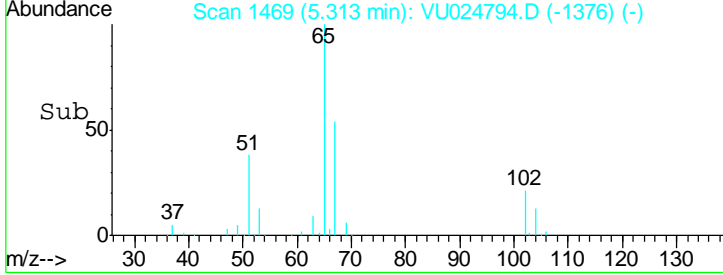
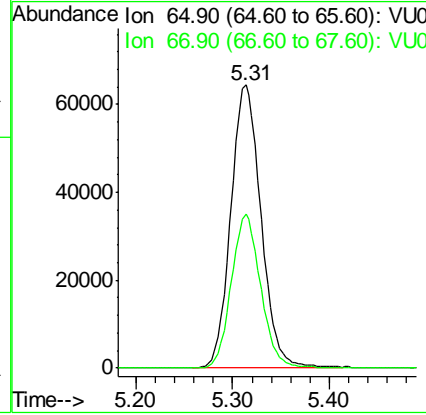
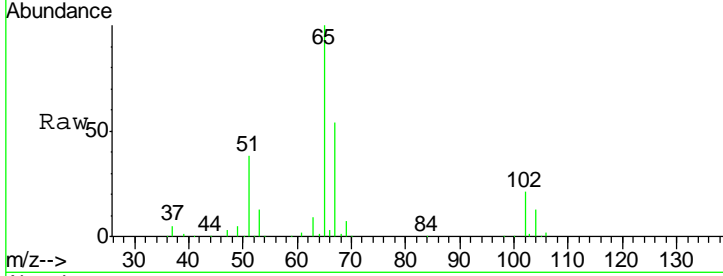




#33
 1,2-Dichloroethane-d4
 Concen: 42.90 ug/l
 RT: 5.31 min Scan# 1469
 Delta R.T. 0.00 min
 Lab File: VU024794.D
 Acq: 21 Jun 2018 06:53

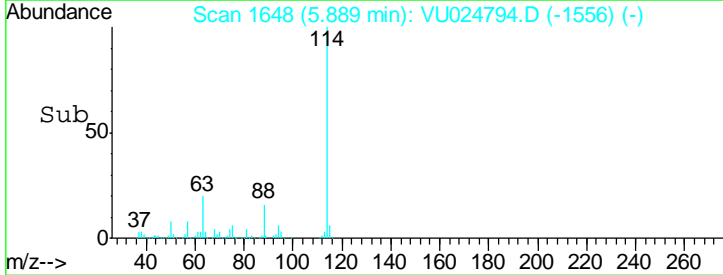
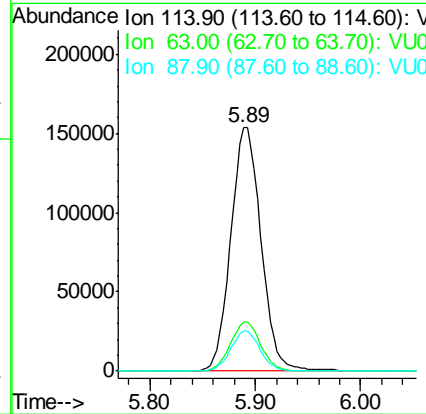
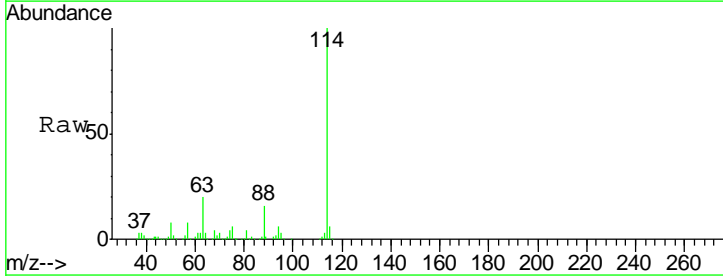
Instrument : MSVOA_U
 ClientSampled : CKMW07

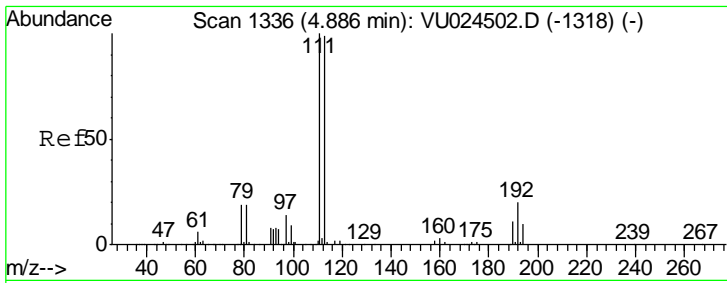
Tgt Ion	Resp	Lower	Upper
65	140060		
67	52.9	0.0	107.0



#34
 1,4-Difluorobenzene
 Concen: 50.00 ug/l
 RT: 5.89 min Scan# 1648
 Delta R.T. -0.00 min
 Lab File: VU024794.D
 Acq: 21 Jun 2018 06:53

Tgt Ion	Resp	Lower	Upper
114	305230		
63	20.1	0.0	45.4
88	16.4	0.0	31.0

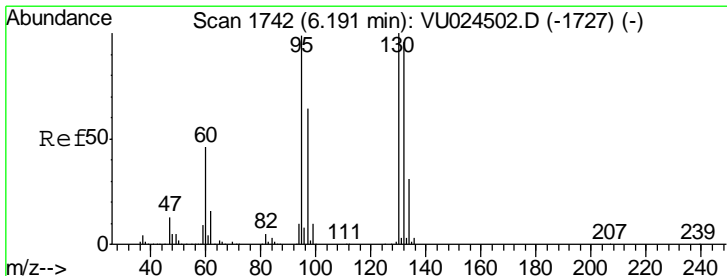
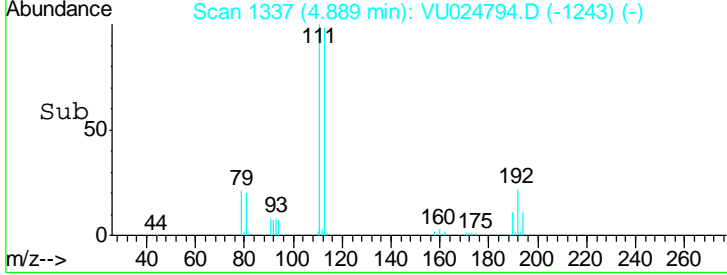
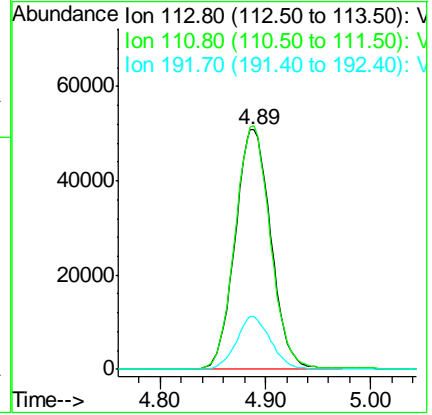
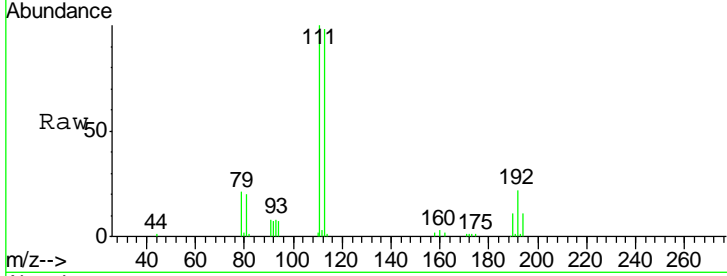




#35
 Dibromofluoromethane
 Concen: 47.33 ug/l
 RT: 4.89 min Scan# 1337
 Delta R.T. 0.00 min
 Lab File: VU024794.D
 Acq: 21 Jun 2018 06:53

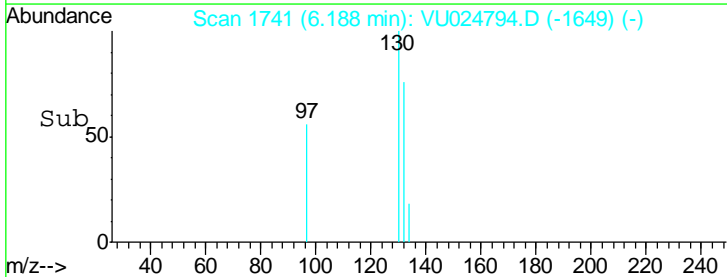
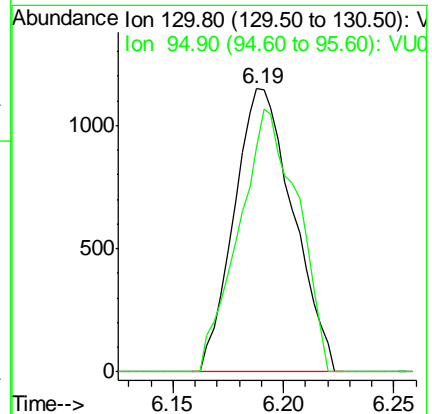
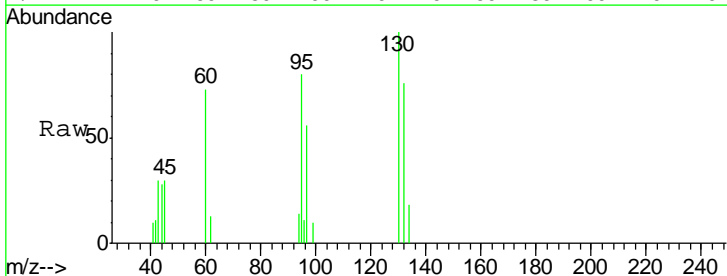
Instrument : MSVOA_U
 ClientSampled : CKMW07

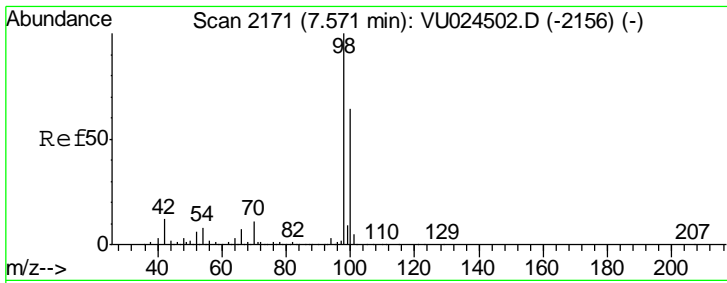
Tgt Ion	Resp	Lower	Upper
113	119888		
111	99.9	82.2	123.4
192	21.1	16.2	24.4



#44
 Trichloroethene
 Concen: 0.73 ug/l
 RT: 6.19 min Scan# 1741
 Delta R.T. -0.00 min
 Lab File: VU024794.D
 Acq: 21 Jun 2018 06:53

Tgt Ion	Resp	Lower	Upper
130	2128		
130	100		
95	79.5	0.0	202.4

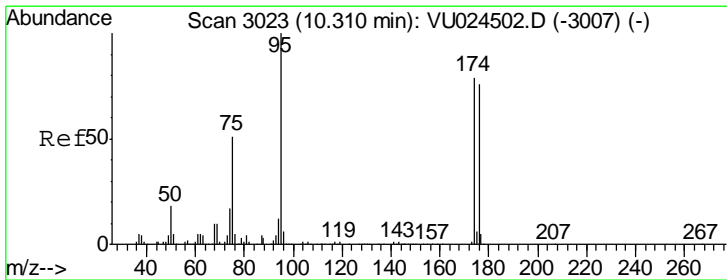
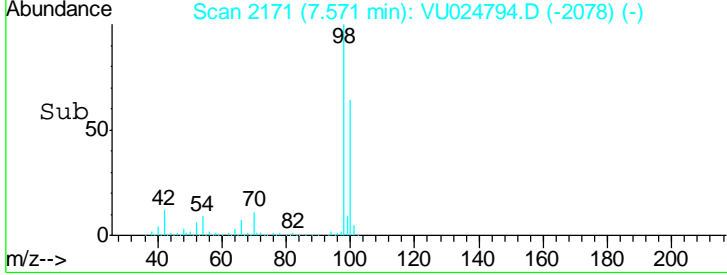
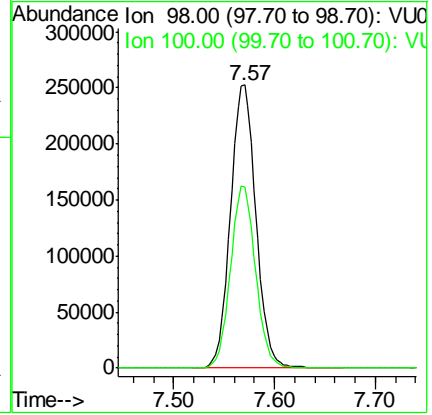
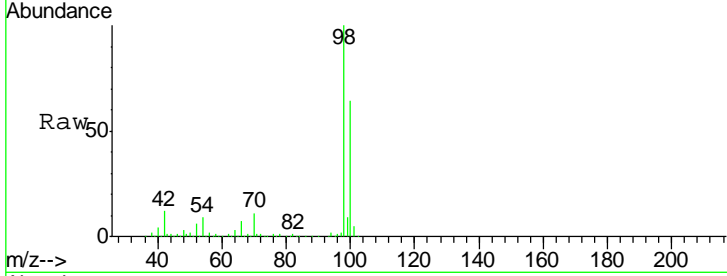




#50
 Toluene-d8
 Concen: 48.29 ug/l
 RT: 7.57 min Scan# 2171
 Delta R.T. 0.00 min
 Lab File: VU024794.D
 Acq: 21 Jun 2018 06:53

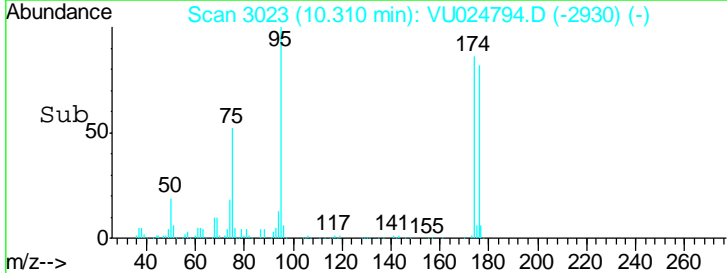
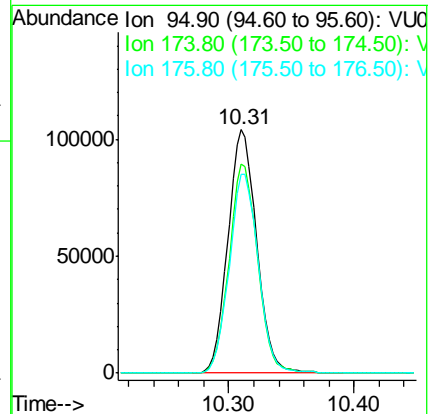
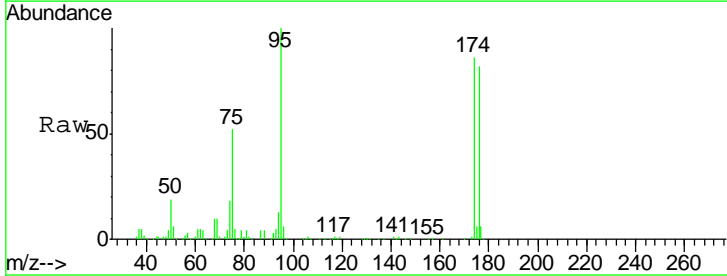
Instrument : MSVOA_U
 ClientSampled : CKMW07

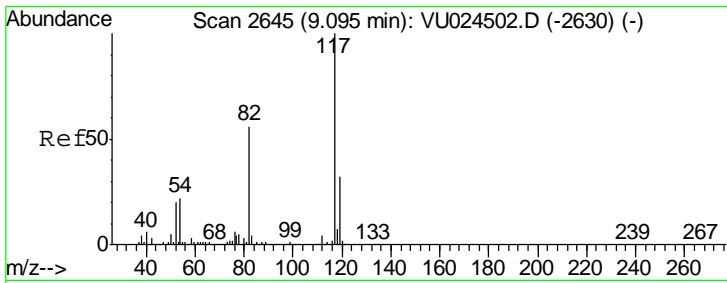
Tgt Ion	Resp	Lower	Upper
98	446168		
98	100		
100	63.4	51.1	76.7



#62
 4-Bromofluorobenzene
 Concen: 45.04 ug/l
 RT: 10.31 min Scan# 3023
 Delta R.T. 0.00 min
 Lab File: VU024794.D
 Acq: 21 Jun 2018 06:53

Tgt Ion	Resp	Lower	Upper
95	165220		
95	100		
174	85.3	0.0	165.8
176	82.6	0.0	159.4

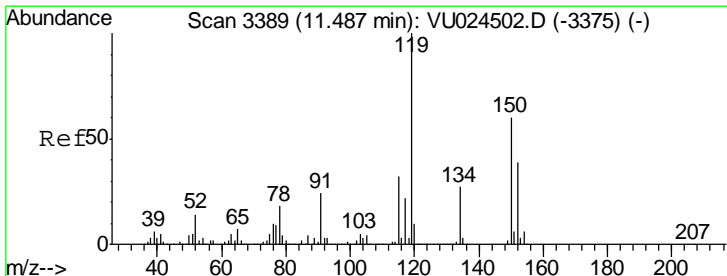
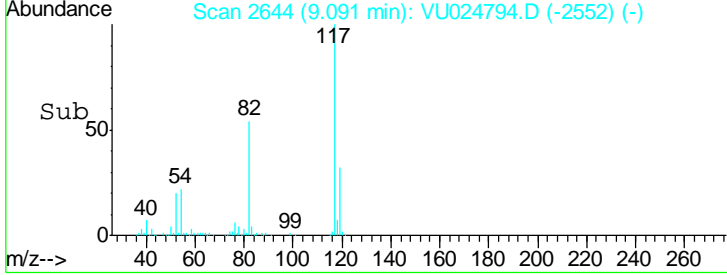
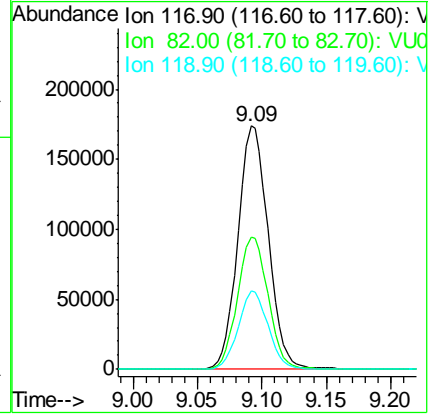
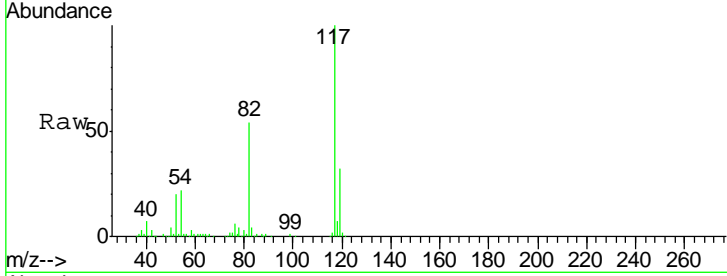




#63
 Chlorobenzene-d5
 Concen: 50.00 ug/l
 RT: 9.09 min Scan# 2644
 Delta R.T. -0.00 min
 Lab File: VU024794.D
 Acq: 21 Jun 2018 06:53

Instrument : MSVOA_U
 ClientSampled : CKMW07

Tgt Ion	Resp	Lower	Upper
117	285105		
82	54.3	44.3	66.5
119	32.1	25.4	38.2



#72
 1,4-Dichlorobenzene-d4
 Concen: 50.00 ug/l
 RT: 11.49 min Scan# 3389
 Delta R.T. 0.00 min
 Lab File: VU024794.D
 Acq: 21 Jun 2018 06:53

Tgt Ion	Resp	Lower	Upper
152	155317		
115	56.0	43.0	129.0
150	156.7	0.0	354.0

