

Data Path : Z:\VOASRV\HPCHEM1\MSVOA U\DATA\VU062018\
 Data File : VU024765.D
 Acq On : 20 Jun 2018 18:20
 Operator : MD/SY
 Sample : J3577-05
 Misc : 5.0mL/MSVOA U/WATER
 ALS Vial : 18 Sample Multiplier: 1

Instrument :
 MSVOA_U
 ClientSampleId :
 544-IW-16

Integration Parameters: RTEINT.P
 Integrator: RTE
 Smoothing : ON Filtering: 5
 Sampling : 1 Min Area: 3 % of largest Peak
 Start Thrs: 0.2 Max Peaks: 100
 Stop Thrs : 0 Peak Location: TOP

If leading or trailing edge < 100 prefer < Baseline drop else tangent >
 Peak separation: 5

Method : Z:\VOASRV\HPCHEM1\MSVOA_U\METHOD\82U061318W.M
 Title : SW846 8260

Signal : TIC

peak #	R.T. min	first scan	max scan	last scan	PK TY	peak height	corr. area	corr. % max.	% of total
1	1.088	134	155	178	rBV	1008552	1195372	100.00%	16.624%
2	1.760	358	364	376	rVB2	12132	16730	1.40%	0.233%
3	2.320	527	538	557	rBV	110502	178146	14.90%	2.477%
4	4.889	1319	1337	1353	rBV	173465	394802	33.03%	5.491%
5	4.989	1353	1368	1397	rVB	245130	547020	45.76%	7.607%
6	5.313	1453	1469	1488	rBV2	177367	376032	31.46%	5.229%
7	5.889	1633	1648	1672	rBV	346922	692140	57.90%	9.626%
8	7.570	2152	2171	2198	rBV	664130	1154225	96.56%	16.052%
9	8.471	2437	2451	2466	rBV5	8567	15659	1.31%	0.218%
10	9.091	2631	2644	2668	rBV	512115	847638	70.91%	11.788%
11	10.030	2926	2936	2950	rBV3	22216	35485	2.97%	0.493%
12	10.310	3011	3023	3043	rBV	504091	791183	66.19%	11.003%
13	11.487	3377	3389	3408	rBV	578851	909695	76.10%	12.651%
14	12.570	3711	3726	3741	rBV2	23378	36508	3.05%	0.508%

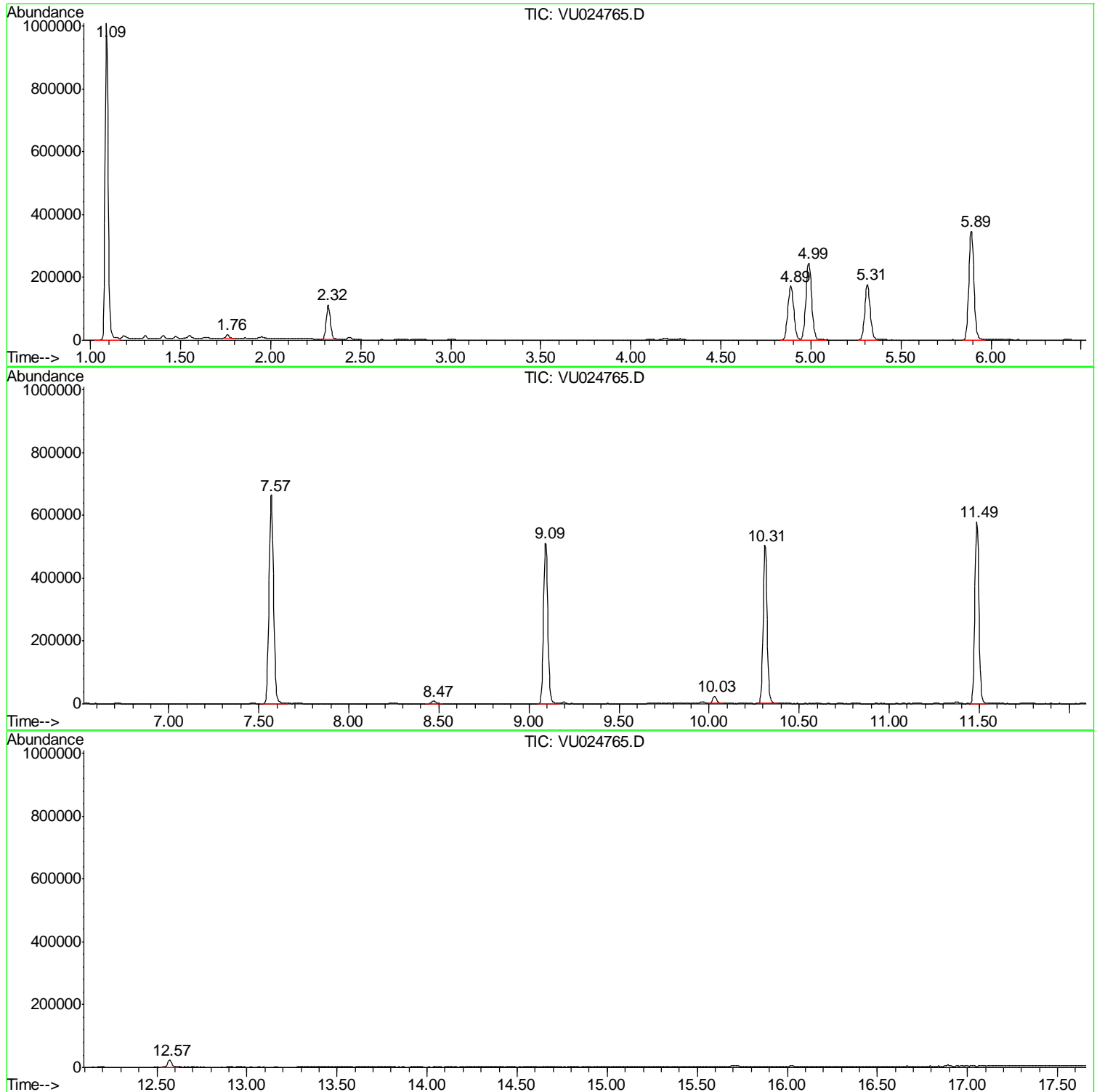
Sum of corrected areas: 7190635

Data Path : Z:\VOASRV\HPCHEM1\MSVOA U\DATA\VU062018\
Data File : VU024765.D
Acq On : 20 Jun 2018 18:20
Operator : MD/SY
Sample : J3577-05
Misc : 5.0mL/MSVOA U/WATER
ALS Vial : 18 Sample Multiplier: 1

Instrument :
MSVOA_U
ClientSampled :
544-IW-16

Quant Method : Z:\VOASRV\HPCHEM1\MSVOA_U\METHOD\82U061318W.M
Quant Title : SW846 8260

TIC Library : C:\DATABASE\NIST11.L
TIC Integration Parameters: LSCINT.P



Data Path : Z:\VOASRV\HPCHEM1\MSVOA_U\DATA\VU062018\
Data File : VU024765.D
Acq On : 20 Jun 2018 18:20
Operator : MD/SY
Sample : J3577-05
Misc : 5.0mL/MSVOA_U/WATER
ALS Vial : 18 Sample Multiplier: 1

Instrument :
MSVOA_U
ClientSampleId :
544-IW-16

Quant Method : Z:\VOASRV\HPCHEM1\MSVOA_U\METHOD\82U061318W.M
Quant Title : SW846 8260

TIC Library : C:\DATABASE\NIST11.L
TIC Integration Parameters: LSCINT.P

No Library Search Compounds Detected

Data Path : Z:\VOASRV\HPCHEM1\MSVOA_U\DATA\VU062018\
Data File : VU024765.D
Acq On : 20 Jun 2018 18:20
Operator : MD/SY
Sample : J3577-05
Misc : 5.0mL/MSVOA_U/WATER
ALS Vial : 18 Sample Multiplier: 1

Instrument :
MSVOA_U
ClientSampleId :
544-IW-16

Quant Method : Z:\VOASRV\HPCHEM1\MSVOA_U\METHOD\82U061318W.M
Quant Title : SW846 8260

TIC Library : C:\DATABASE\NIST11.L
TIC Integration Parameters: LSCINT.P

TIC Top Hit name	RT	EstConc	Units	Response	--Internal Standard--			
					#	RT	Resp	Conc
