

Data Path : Z:\voasrv\HPCHEM1\MSVOA\_U\Data\VU070524\  
 Data File : VU059862.D  
 Acq On : 05 Jul 2024 15:19  
 Operator : MD/SY  
 Sample : P3137-12  
 Misc : 25.0mL/MSVOA\_U/WATER  
 ALS Vial : 19 Sample Multiplier: 1

Instrument :  
 MSVOA\_U  
 ClientSampleId :

Quant Time: Jul 06 03:05:02 2024  
 Quant Method : Z:\voasrv\HPCHEM1\MSVOA\_U\Method\SFAMUTR061724WMA.M  
 Quant Title : TRACE VOA SFAM1.0  
 QLast Update : Sat Jul 06 02:59:52 2024  
 Response via : Initial Calibration

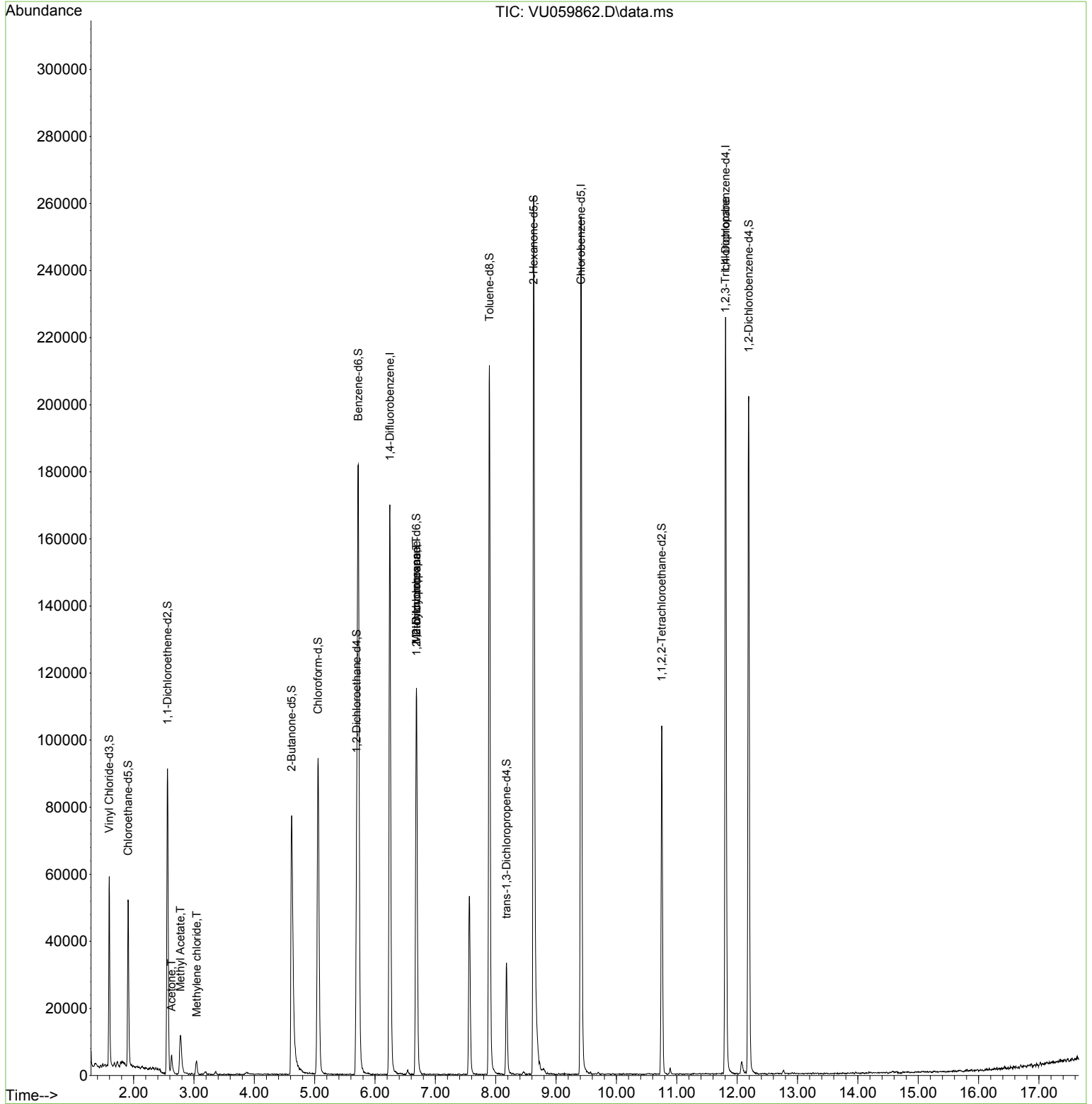
Compound	R.T.	QIon	Response	Conc	Units	Dev(Min)
-----						
Internal Standards						
1) 1,4-Difluorobenzene	6.245	114	145533	5.000	ug/L	0.00
28) Chlorobenzene-d5	9.412	117	153058	5.000	ug/L	0.00
58) 1,4-Dichlorobenzene-d4	11.807	152	68460	5.000	ug/L	0.00
System Monitoring Compounds						
4) Vinyl Chloride-d3	1.596	65	42072	4.157	ug/L	0.00
Spiked Amount	5.000	Range 40 - 130	Recovery	=	83.200%	
7) Chloroethane-d5	1.908	69	39066	4.012	ug/L	0.00
Spiked Amount	5.000	Range 65 - 130	Recovery	=	80.200%	
11) 1,1-Dichloroethene-d2	2.560	65	16791	3.999	ug/L	0.00
Spiked Amount	5.000	Range 60 - 125	Recovery	=	80.000%	
20) 2-Butanone-d5	4.618	46	117922	56.571	ug/L	0.00
Spiked Amount	50.000	Range 40 - 130	Recovery	=	113.140%	
24) Chloroform-d	5.055	84	91605	4.410	ug/L	0.00
Spiked Amount	5.000	Range 70 - 125	Recovery	=	88.200%	
26) 1,2-Dichloroethane-d4	5.695	65	46924	4.690	ug/L	0.00
Spiked Amount	5.000	Range 70 - 130	Recovery	=	93.800%	
32) Benzene-d6	5.721	84	182364	4.329	ug/L	0.00
Spiked Amount	5.000	Range 70 - 125	Recovery	=	86.600%	
36) 1,2-Dichloropropane-d6	6.685	67	59376	4.600	ug/L	0.00
Spiked Amount	5.000	Range 60 - 140	Recovery	=	92.000%	
41) Toluene-d8	7.894	98	150601	3.846	ug/L	0.00
Spiked Amount	5.000	Range 70 - 130	Recovery	=	77.000%	
43) trans-1,3-Dichloroprop...	8.177	79	20207	4.999	ug/L	0.00
Spiked Amount	5.000	Range 55 - 130	Recovery	=	100.000%	
46) 2-Hexanone-d5	8.627	63	93105	55.439	ug/L	0.00
Spiked Amount	50.000	Range 45 - 130	Recovery	=	110.880%	
56) 1,1,2,2-Tetrachloroeth...	10.750	84	53206	4.989	ug/L	0.00
Spiked Amount	5.000	Range 65 - 120	Recovery	=	99.800%	
66) 1,2-Dichlorobenzene-d4	12.190	152	60519	4.967	ug/L	0.00
Spiked Amount	5.000	Range 80 - 120	Recovery	=	99.400%	
-----						
Target Compounds						Qvalue
13) Acetone	2.628	43	7046	5.211	ug/L	97
15) Methyl Acetate	2.776	43	4487	1.257	ug/L #	51
16) Methylene chloride	3.043	84	1988	0.163	ug/L	88
35) Methylcyclohexane	6.685	83	13165	0.735	ug/L #	18
37) 1,2-Dichloropropane	6.689	63	6095	0.507	ug/L #	92
61) 1,2,3-Trichloropropane	11.804	75	7119	1.125	ug/L #	69
-----						

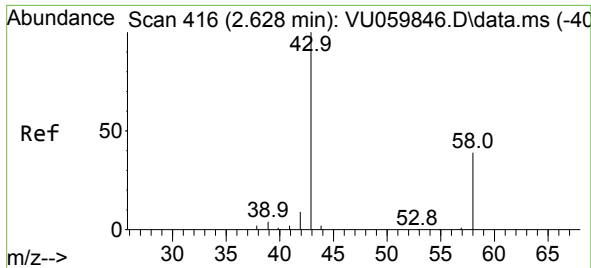
(#) = qualifier out of range (m) = manual integration (+) = signals summed

Data Path : Z:\voasrv\HPCHEM1\MSVOA\_U\Data\VU070524\  
 Data File : VU059862.D  
 Acq On : 05 Jul 2024 15:19  
 Operator : MD/SY  
 Sample : P3137-12  
 Misc : 25.0mL/MSVOA\_U/WATER  
 ALS Vial : 19 Sample Multiplier: 1

Instrument :  
 MSVOA\_U  
 ClientSampleId :

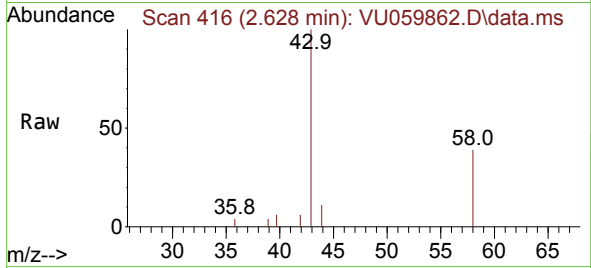
Quant Time: Jul 06 03:05:02 2024  
 Quant Method : Z:\voasrv\HPCHEM1\MSVOA\_U\Method\SFAMUTR061724WMA.M  
 Quant Title : TRACE VOA SFAM1.0  
 QLast Update : Sat Jul 06 02:59:52 2024  
 Response via : Initial Calibration



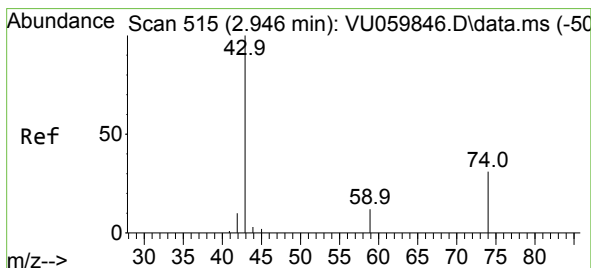
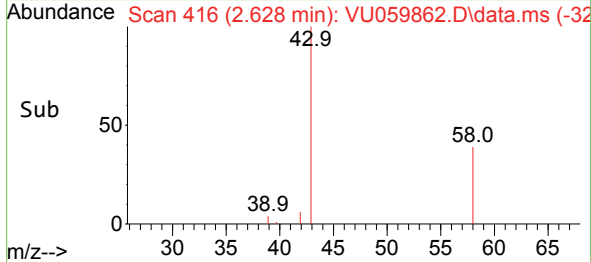
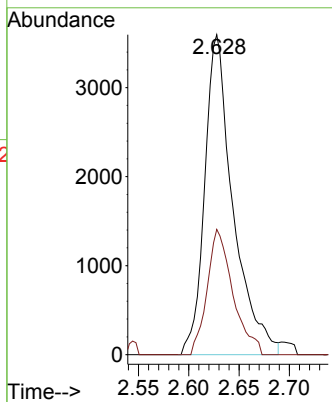


#13  
 Acetone  
 Concen: 5.211 ug/L  
 RT: 2.628 min Scan# 41  
 Delta R.T. 0.000 min  
 Lab File: VU059862.D  
 Acq: 05 Jul 2024 15:19

Instrument :  
 MSVOA\_U  
 ClientSampleId :

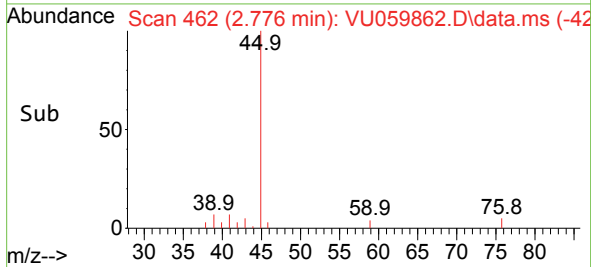
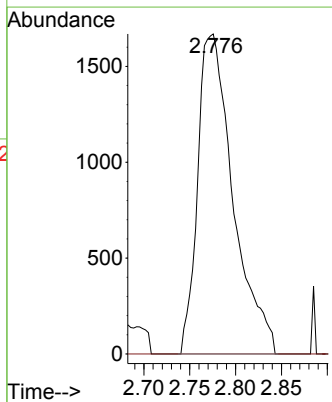
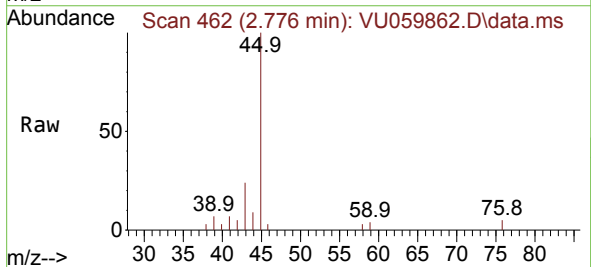


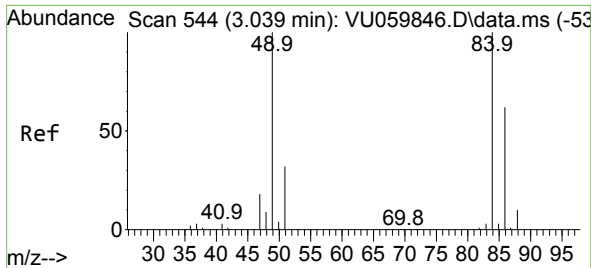
Tgt Ion: 43 Resp: 7046  
 Ion Ratio Lower Upper  
 43 100  
 58 35.5 0.0 68.0



#15  
 Methyl Acetate  
 Concen: 1.257 ug/L  
 RT: 2.776 min Scan# 462  
 Delta R.T. -0.170 min  
 Lab File: VU059862.D  
 Acq: 05 Jul 2024 15:19

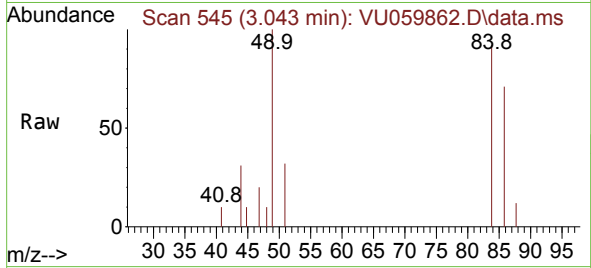
Tgt Ion: 43 Resp: 4487  
 Ion Ratio Lower Upper  
 43 100  
 74 0.0 19.2 28.8#



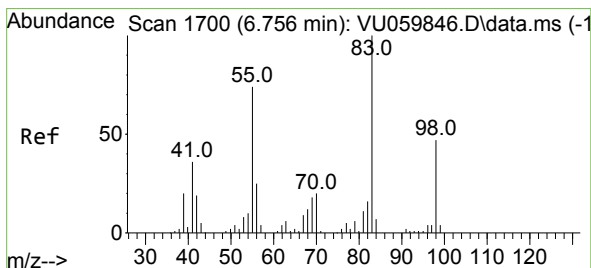
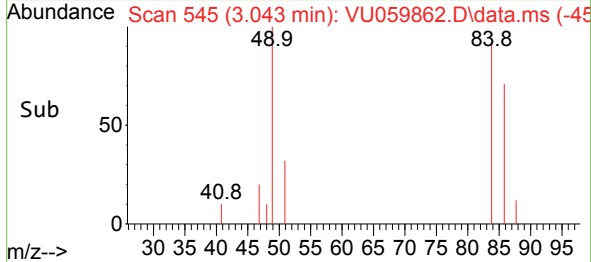
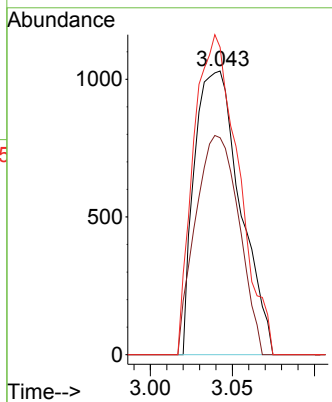


#16  
 Methylene chloride  
 Concen: 0.163 ug/L  
 RT: 3.043 min Scan# 54  
 Delta R.T. 0.003 min  
 Lab File: VU059862.D  
 Acq: 05 Jul 2024 15:19

Instrument :  
 MSVOA\_U  
 ClientSampleId :

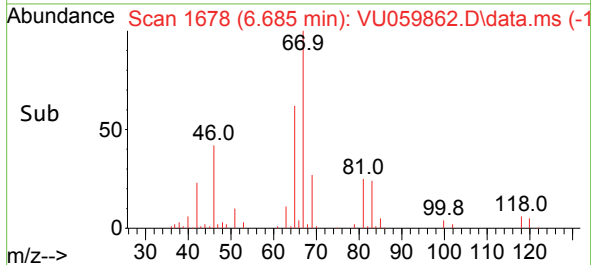
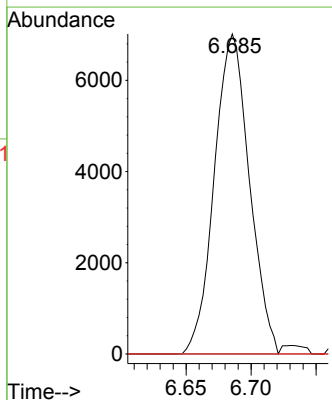
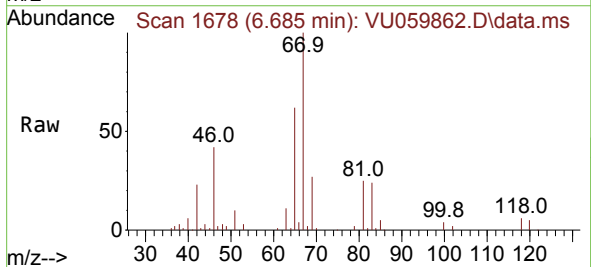


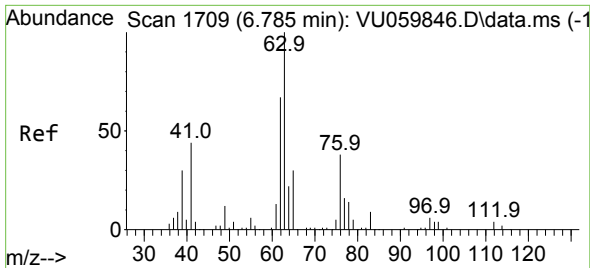
Tgt Ion	Resp	Lower	Upper
84	1988		
84	100		
86	76.5	42.1	78.1
49	108.3	80.6	149.8



#35  
 Methylcyclohexane  
 Concen: 0.735 ug/L  
 RT: 6.685 min Scan# 1678  
 Delta R.T. -0.071 min  
 Lab File: VU059862.D  
 Acq: 05 Jul 2024 15:19

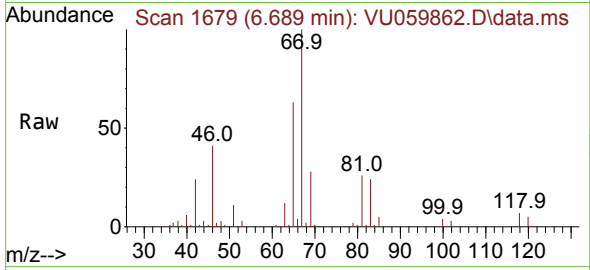
Tgt Ion	Resp	Lower	Upper
83	13165		
83	100		
55	0.0	62.7	94.1#
98	0.3	35.4	53.0#



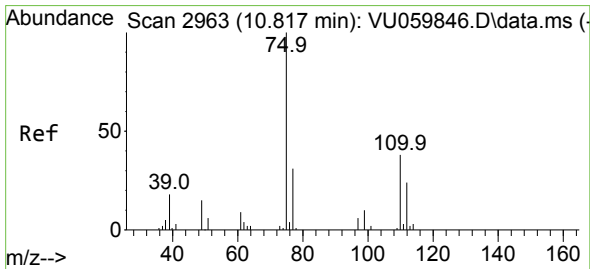
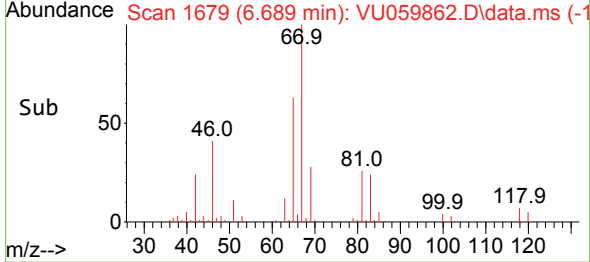
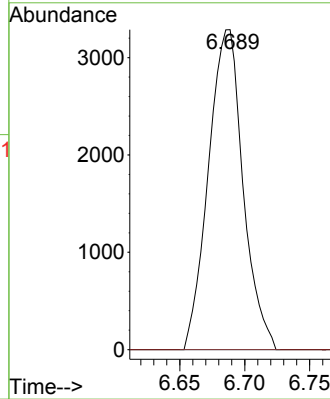


#37  
 1,2-Dichloropropane  
 Concen: 0.507 ug/L  
 RT: 6.689 min Scan# 1  
 Delta R.T. -0.096 min  
 Lab File: VU059862.D  
 Acq: 05 Jul 2024 15:19

Instrument :  
 MSVOA\_U  
 ClientSampleId :



Tgt Ion: 63 Resp: 6095  
 Ion Ratio Lower Upper  
 63 100  
 112 0.7 2.6 3.8#



#61  
 1,2,3-Trichloropropane  
 Concen: 1.125 ug/L  
 RT: 11.804 min Scan# 3270  
 Delta R.T. 0.987 min  
 Lab File: VU059862.D  
 Acq: 05 Jul 2024 15:19

Tgt Ion: 75 Resp: 7119  
 Ion Ratio Lower Upper  
 75 100  
 110 0.9 27.1 40.7#  
 77 30.8 25.4 38.2

