

Data Path : Z:\VOASRV\HPCHEM1\MSVOA U\DATA\VU070720\
 Data File : VU039339.D
 Acq On : 08 Jul 2020 00:56
 Operator : SY/MD
 Sample : VSTDCCC005EC
 Misc : 25.0mL/MSVOA U/WATER
 ALS Vial : 33 Sample Multiplier: 1

Instrument :
 MSVOA_U
 ClientSampleId :
 VSTD00530

Quant Time: Jul 08 01:49:13 2020
 Quant Method : Z:\VOASRV\HPCHEM1\MSVOA_U\METHOD\SOMUTR070720WMA.M
 Quant Title : TRACE VOA SOM01.0
 QLast Update : Wed Jul 08 01:44:57 2020
 Response via : Initial Calibration

Internal Standards	R.T.	QIon	Response	Conc	Units	Dev(Min)
1) 1,4-Difluorobenzene	6.27	114	102556	5.00	ug/L	0.00
28) Chlorobenzene-d5	9.42	117	95161	5.00	ug/L	0.00
60) 1,4-Dichlorobenzene-d4	11.81	152	45383	5.00	ug/L	0.00

System Monitoring Compounds

4) Vinyl Chloride-d3	1.61	65	33814	5.69	ug/L	0.00
Spiked Amount	5.000	Range	40 - 130	Recovery	=	113.80%
7) Chloroethane-d5	1.92	69	32985	5.42	ug/L	0.00
Spiked Amount	5.000	Range	65 - 130	Recovery	=	108.40%
11) 1,1-Dichloroethene-d2	2.58	63	61288	5.24	ug/L	0.00
Spiked Amount	5.000	Range	60 - 125	Recovery	=	104.80%
20) 2-Butanone-d5	4.66	46	162549	59.77	ug/L	0.00
Spiked Amount	50.000	Range	40 - 130	Recovery	=	119.54%
24) Chloroform-d	5.09	84	71044	5.61	ug/L	0.00
Spiked Amount	5.000	Range	70 - 125	Recovery	=	112.20%
26) 1,2-Dichloroethane-d4	5.72	65	46090	5.80	ug/L	0.00
Spiked Amount	5.000	Range	70 - 130	Recovery	=	116.00%
32) Benzene-d6	5.74	84	130825	5.71	ug/L	0.00
Spiked Amount	5.000	Range	70 - 125	Recovery	=	114.20%
36) 1,2-Dichloropropane-d6	6.71	67	45844	5.70	ug/L	0.00
Spiked Amount	5.000	Range	60 - 140	Recovery	=	114.00%
41) Toluene-d8	7.91	98	106125	5.34	ug/L	0.00
Spiked Amount	5.000	Range	70 - 130	Recovery	=	106.80%
43) trans-1,3-Dichloropropene-	8.19	79	19228	5.41	ug/L	0.00
Spiked Amount	5.000	Range	55 - 130	Recovery	=	108.20%
46) 2-Hexanone-d5	8.64	63	124790	59.19	ug/L	0.00
Spiked Amount	50.000	Range	45 - 130	Recovery	=	118.38%
57) 1,1,2,2-Tetrachloroethane-	10.76	84	44934	5.63	ug/L	0.00
Spiked Amount	5.000	Range	65 - 120	Recovery	=	112.60%
64) 1,2-Dichlorobenzene-d4	12.19	152	44058	5.44	ug/L	0.00
Spiked Amount	5.000	Range	80 - 120	Recovery	=	108.80%

Target Compounds

Target Compounds	R.T.	QIon	Response	Conc	Units	Ovalue
2) Dichlorodifluoromethane	1.39	85	30077	4.839	ug/L	100
3) Chloromethane	1.53	50	37531	4.984	ug/L	97
5) Vinyl chloride	1.61	62	42241	5.051	ug/L	99
6) Bromomethane	1.87	94	14605	4.055	ug/L	96
8) Chloroethane	1.94	64	29519	4.886	ug/L	93
9) Trichlorofluoromethane	2.15	101	66166	4.557	ug/L	98
10) 1,1,2-Trichloro-1,2,2-trif	2.59	101	26497	4.447	ug/L	96
12) 1,1-Dichloroethene	2.59	96	29478	4.833	ug/L	97
13) Acetone	2.67	43	77032	52.474	ug/L	99
14) Carbon disulfide	2.81	76	99581	4.635	ug/L	99
15) Methyl Acetate	2.97	43	20536	5.296	ug/L #	90
16) Methylene chloride	3.06	84	39131	5.100	ug/L	95
17) Methyl tert-butyl Ether	3.38	73	101679	5.291	ug/L	99
18) trans-1,2-Dichloroethene	3.37	96	32400	4.798	ug/L	97
19) 1,1-Dichloroethane	3.89	63	68733	5.203	ug/L	98
21) 2-Butanone	4.74	43	143358	54.713	ug/L	99
22) cis-1,2-Dichloroethene	4.69	96	38543	5.091	ug/L	95

Data Path : Z:\VOASRV\HPCHEM1\MSVOA U\DATA\VU070720\
 Data File : VU039339.D
 Acq On : 08 Jul 2020 00:56
 Operator : SY/MD
 Sample : VSTDCCC005EC
 Misc : 25.0mL/MSVOA U/WATER
 ALS Vial : 33 Sample Multiplier: 1

Instrument :
 MSVOA_U
 ClientSampleId :
 VSTD00530

Quant Time: Jul 08 01:49:13 2020
 Quant Method : Z:\VOASRV\HPCHEM1\MSVOA_U\METHOD\SOMUTR070720WMA.M
 Quant Title : TRACE VOA SOM01.0
 QLast Update : Wed Jul 08 01:44:57 2020
 Response via : Initial Calibration

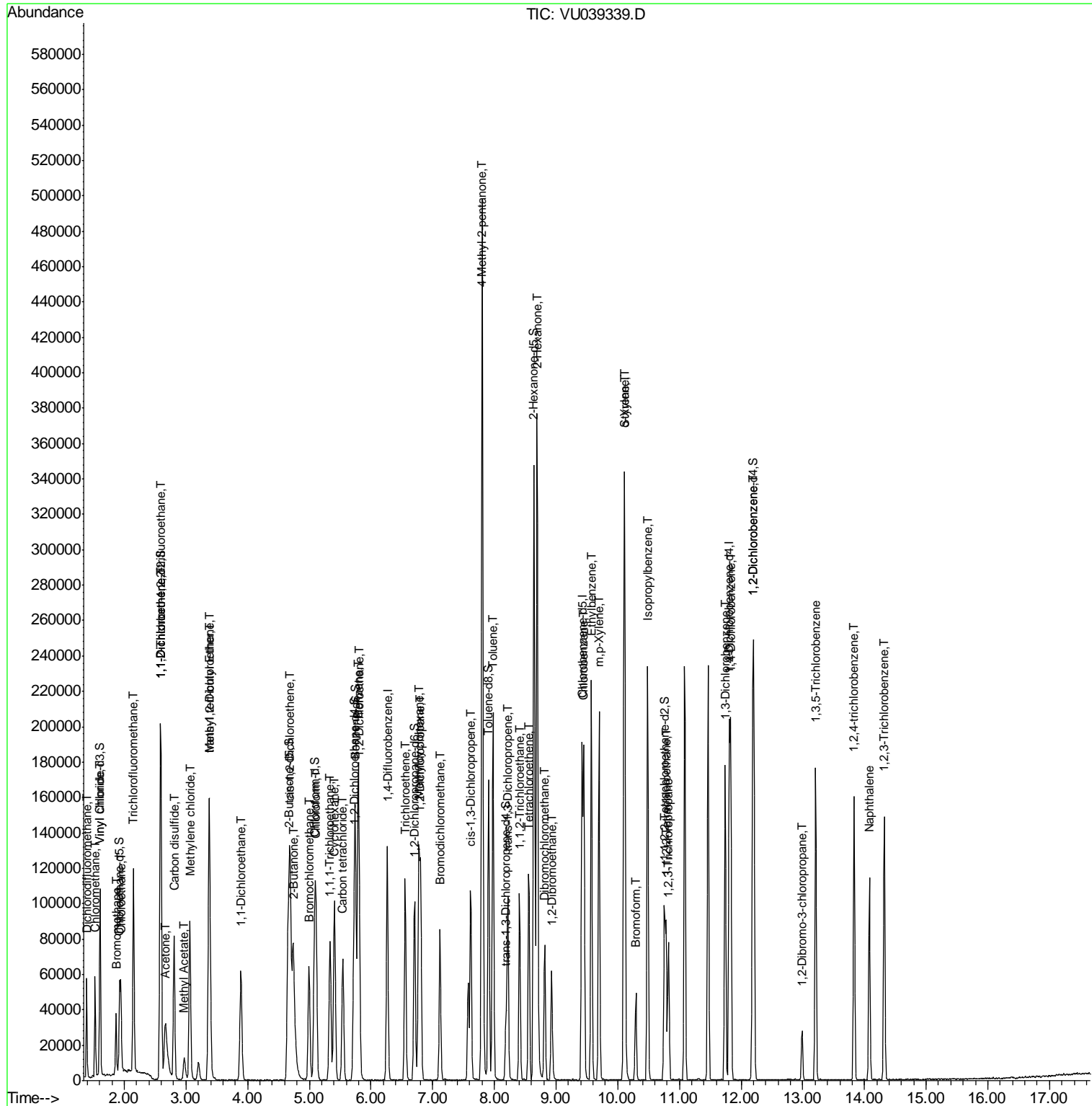
Internal Standards	R.T.	QIon	Response	Conc	Units	Dev(Min)
23) Bromochloromethane	5.00	128	17942	5.216	ug/L	96
25) Chloroform	5.11	83	72606	5.442	ug/L	95
27) 1,2-Dichloroethane	5.81	62	51303	5.316	ug/L	100
29) 1,1,1-Trichloroethane	5.34	97	55887	4.986	ug/L	98
30) Cyclohexane	5.41	56	50429	4.274	ug/L	98
31) Carbon tetrachloride	5.54	117	44079	4.610	ug/L	99
33) Benzene	5.79	78	146561	5.151	ug/L	100
34) Trichloroethene	6.56	95	36220	4.924	ug/L	97
35) Methylcyclohexane	6.78	83	49847	4.230	ug/L	98
37) 1,2-Dichloropropane	6.81	63	41081	5.297	ug/L	99
38) Bromodichloromethane	7.12	83	51157	5.165	ug/L	99
39) cis-1,3-Dichloropropene	7.62	75	58322	4.975	ug/L	96
40) 4-Methyl-2-pentanone	7.80	43	348423	53.852	ug/L	99
42) Toluene	7.98	91	145930	4.790	ug/L	97
44) trans-1,3-Dichloropropene	8.22	75	52491	5.047	ug/L	97
45) 1,1,2-Trichloroethane	8.41	97	29926	5.372	ug/L	93
47) Tetrachloroethene	8.56	164	22368	4.372	ug/L	93
48) 2-Hexanone	8.69	43	254428	53.333	ug/L	100
49) Dibromochloromethane	8.82	129	35776	5.302	ug/L	91
50) 1,2-Dibromoethane	8.93	107	28902	5.107	ug/L	96
51) Chlorobenzene	9.45	112	89568	4.811	ug/L	99
52) Ethylbenzene	9.57	91	153889	4.571	ug/L	98
53) m,p-Xylene	9.70	106	54827	4.322	ug/L	91
54) o-Xylene	10.10	106	57465	4.653	ug/L	96
55) Styrene	10.11	104	97375	4.531	ug/L	97
56) Isopropylbenzene	10.48	105	143646	4.301	ug/L	100
58) 1,1,2,2-Tetrachloroethane	10.78	83	40523	5.226	ug/L	98
59) 1,2,3-Trichloropropane	10.83	75	29534	5.167	ug/L	97
61) Bromoform	10.29	173	19825	5.183	ug/L	96
62) 1,3-Dichlorobenzene	11.74	146	65234	4.587	ug/L	98
63) 1,4-Dichlorobenzene	11.83	146	67187	4.709	ug/L	99
65) 1,2-Dichlorobenzene	12.21	146	66301	4.651	ug/L	99
66) 1,2-Dibromo-3-chloropropan	12.99	75	6851	5.440	ug/L	90
67) 1,3,5-Trichlorobenzene	13.21	180	47460	4.460	ug/L	99
68) 1,2,4-trichlorobenzene	13.83	180	44832	4.923	ug/L	91
69) Naphthalene	14.08	128	86458	4.718	ug/L	99
70) 1,2,3-Trichlorobenzene	14.32	180	40689	4.822	ug/L	98

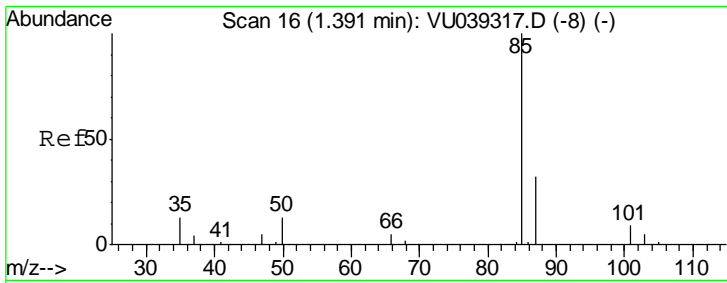
(#) = qualifier out of range (m) = manual integration (+) = signals summed

Data Path : Z:\VOASRV\HPCHEM1\MSVOA U\DATA\VU070720\
 Data File : VU039339.D
 Acq On : 08 Jul 2020 00:56
 Operator : SY/MD
 Sample : VSTDCCC005EC
 Misc : 25.0mL/MSVOA U/WATER
 ALS Vial : 33 Sample Multiplier: 1

Instrument :
 MSVOA_U
 Client Sampled :
 VSTD00530

Quant Time: Jul 08 01:49:13 2020
 Quant Method : Z:\VOASRV\HPCHEM1\MSVOA_U\METHOD\SOMUTR070720WMA.M
 Quant Title : TRACE VOA SOM01.0
 QLast Update : Wed Jul 08 01:44:57 2020
 Response via : Initial Calibration

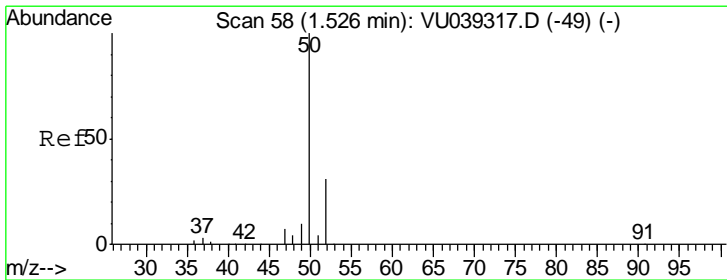
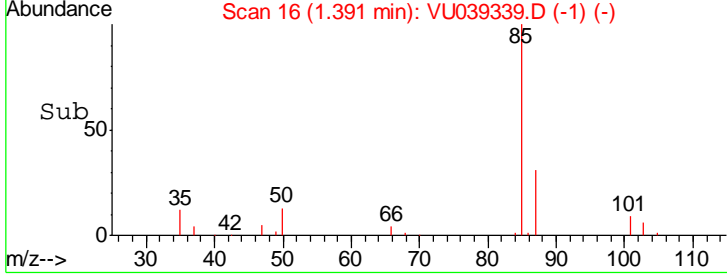
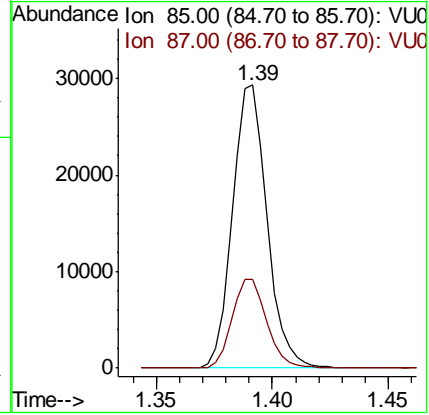
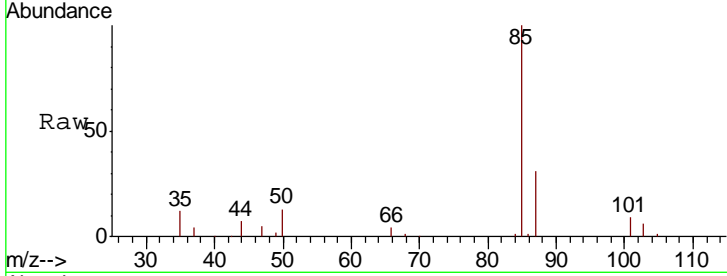




#2
 Dichlorodifluoromethane
 Concen: 4.839 ug/L
 RT: 1.39 min Scan# 16
 Delta R.T. 0.00 min
 Lab File: VU039339.D
 Acq: 08 Jul 2020 00:56

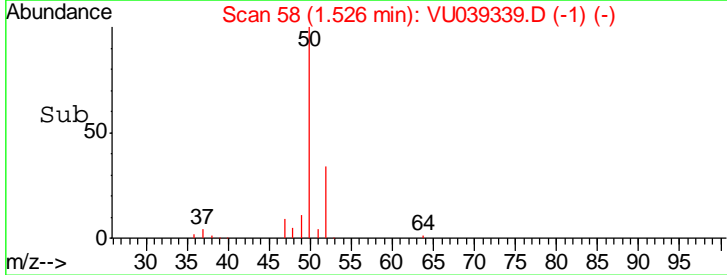
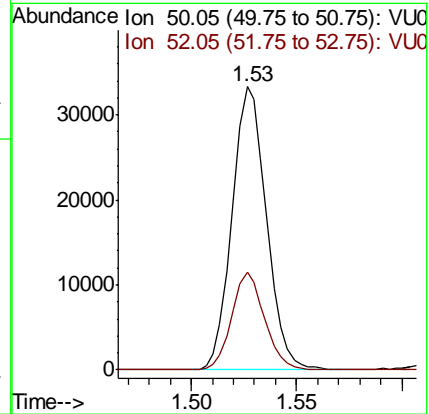
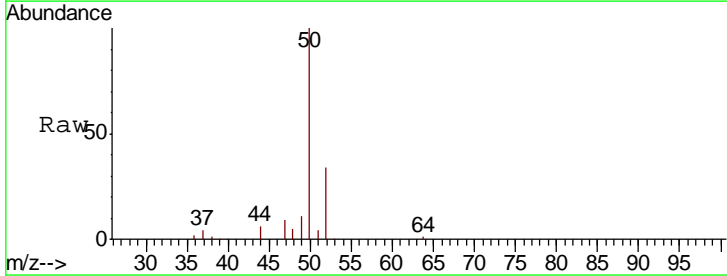
Instrument : MSVOA_U
 ClientSampled : VSTD00530

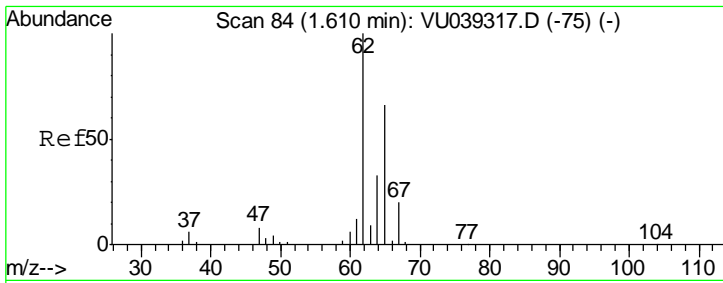
Tgt Ion	Resp	Lower	Upper
85	30077		
87	31.6	25.2	37.8



#3
 Chloromethane
 Concen: 4.984 ug/L
 RT: 1.53 min Scan# 58
 Delta R.T. 0.00 min
 Lab File: VU039339.D
 Acq: 08 Jul 2020 00:56

Tgt Ion	Resp	Lower	Upper
50	37531		
52	34.4	23.0	42.8

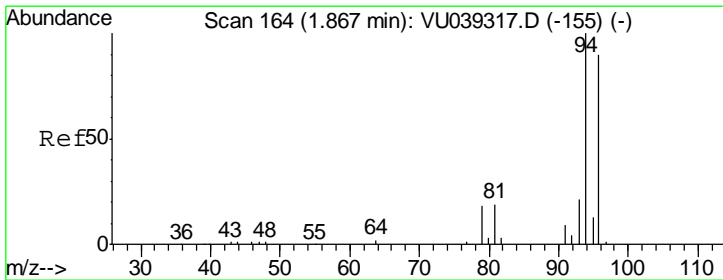
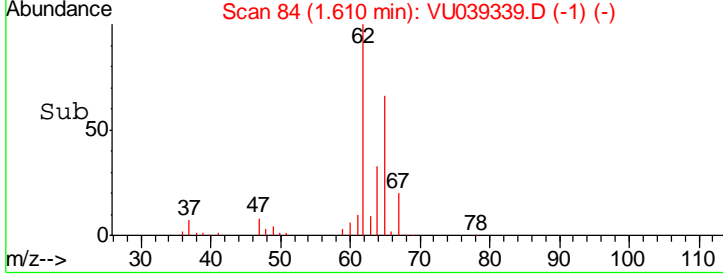
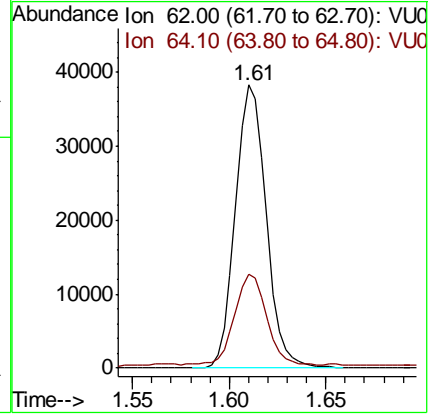
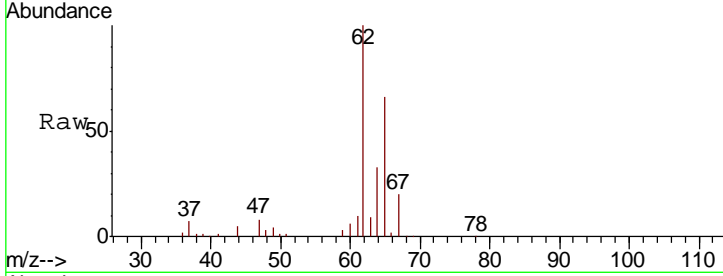




#5
 Vinyl chloride
 Concen: 5.051 ug/L
 RT: 1.61 min Scan# 84
 Delta R.T. 0.00 min
 Lab File: VU039339.D
 Acq: 08 Jul 2020 00:56

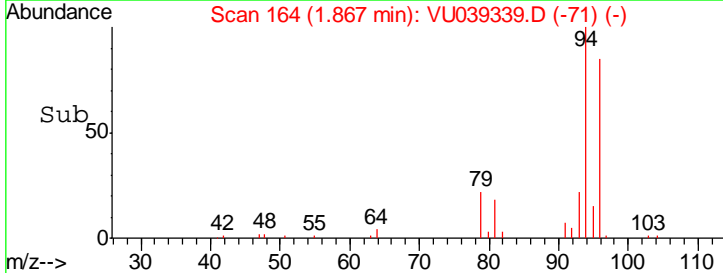
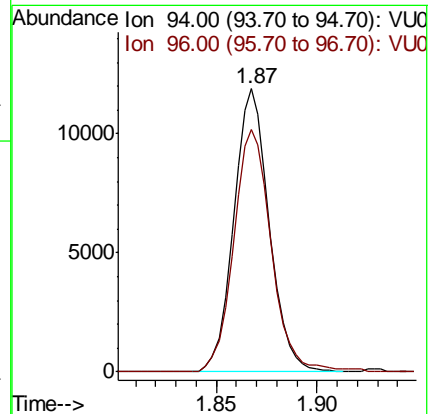
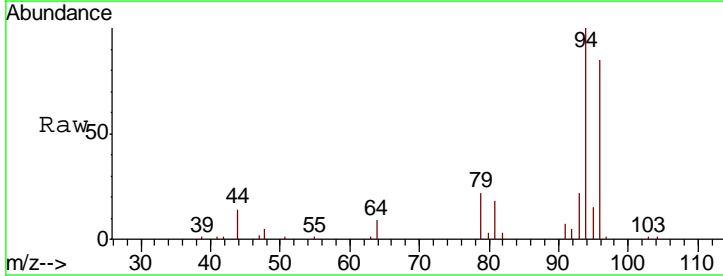
Instrument :
 MSVOA_U
 ClientSampled :
 VSTD00530

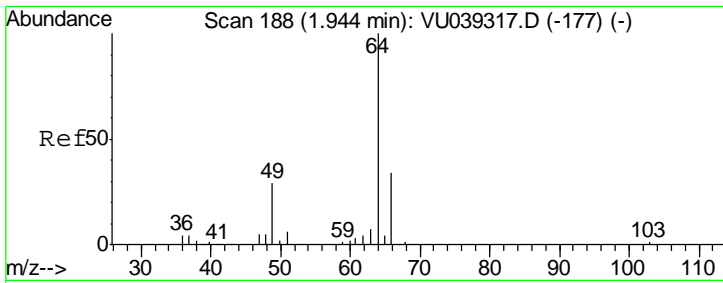
Tgt Ion	Resp	Lower	Upper
62	100		
64	33.3	23.7	44.1



#6
 Bromomethane
 Concen: 4.055 ug/L
 RT: 1.87 min Scan# 164
 Delta R.T. 0.00 min
 Lab File: VU039339.D
 Acq: 08 Jul 2020 00:56

Tgt Ion	Resp	Lower	Upper
94	100		
96	85.4	62.7	116.5

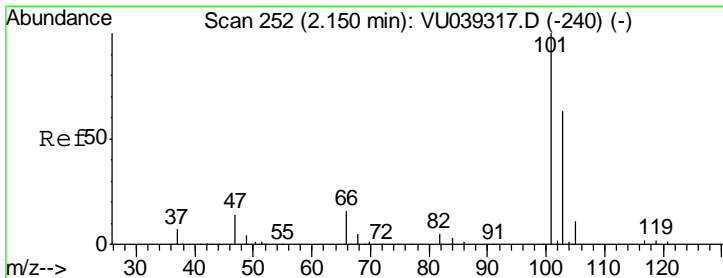
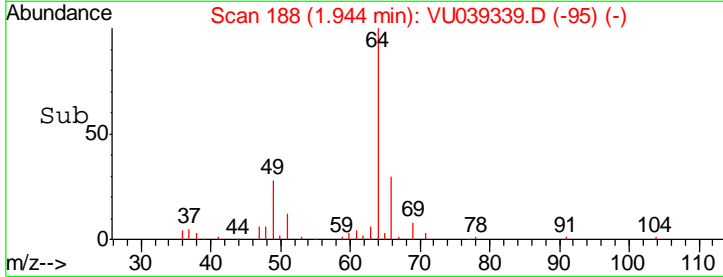
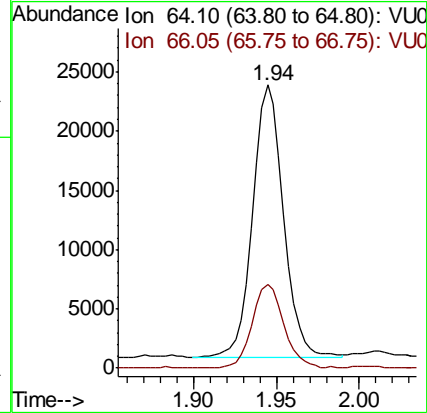
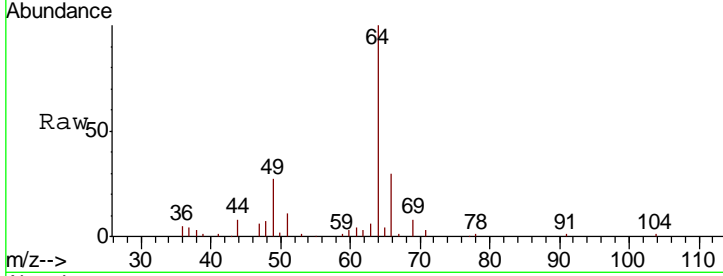




#8
 Chloroethane
 Concen: 4.886 ug/L
 RT: 1.94 min Scan# 188
 Delta R.T. 0.00 min
 Lab File: VU039339.D
 Acq: 08 Jul 2020 00:56

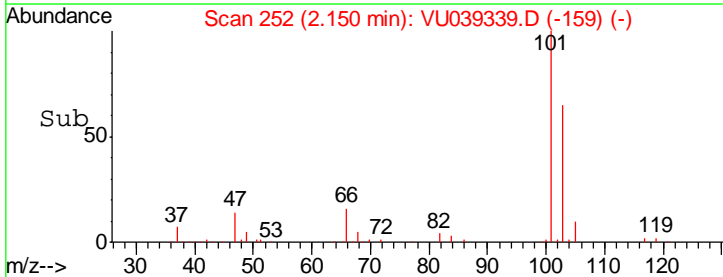
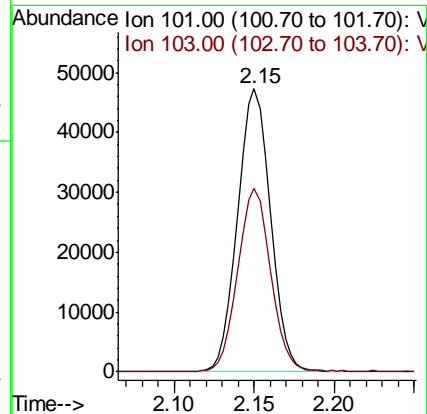
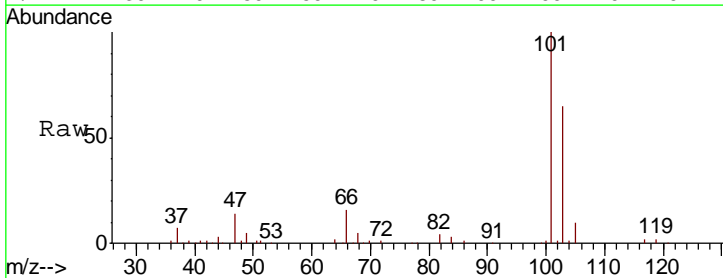
Instrument :
 MSVOA_U
 ClientSampleID :
 VSTD00530

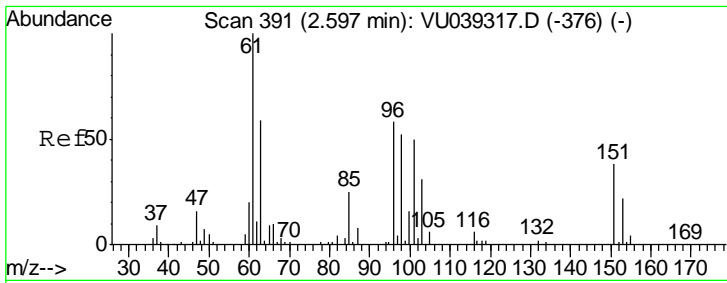
Tgt Ion	Resp	Lower	Upper
64	29519		
66	29.7	23.5	43.7



#9
 Trichlorofluoromethane
 Concen: 4.557 ug/L
 RT: 2.15 min Scan# 252
 Delta R.T. 0.00 min
 Lab File: VU039339.D
 Acq: 08 Jul 2020 00:56

Tgt Ion	Resp	Lower	Upper
101	66166		
103	65.0	50.6	76.0





#10

1,1,2-Trichloro-1,2,2-trifluoroethane

Concen: 4.447 ug/L

RT: 2.59 min Scan# 390

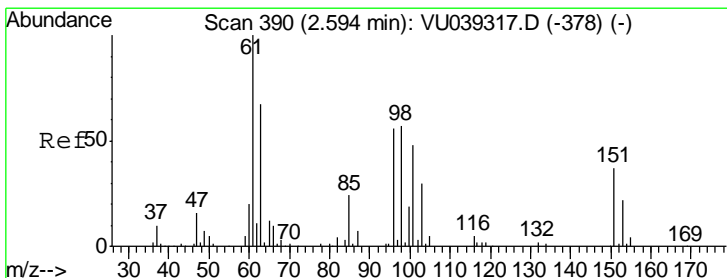
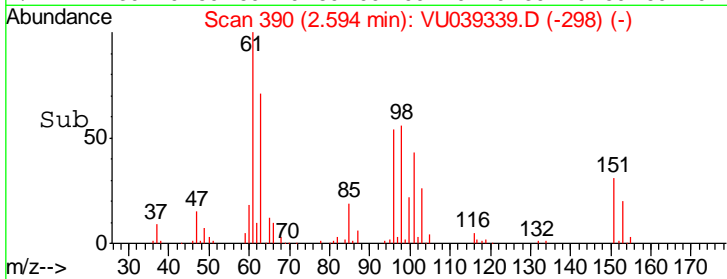
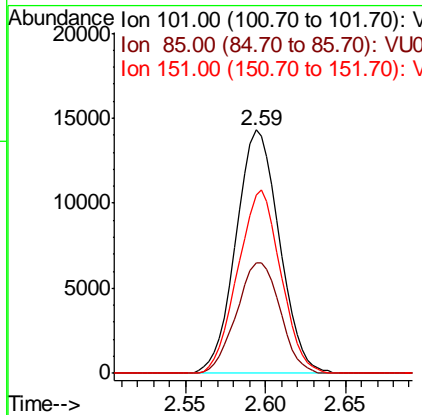
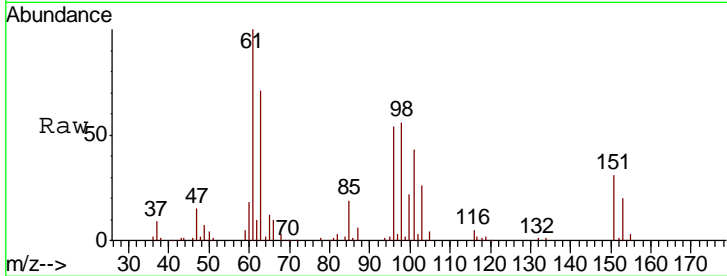
Delta R.T. -0.00 min

Lab File: VU039339.D

Acq: 08 Jul 2020 00:56

Instrument : MSVOA_U
ClientSampled : VSTD00530

Tgt Ion	Resp	Lower	Upper
101	26497		
101	100		
85	45.5	38.9	58.3
151	74.5	57.0	85.4



#12

1,1-Dichloroethene

Concen: 4.833 ug/L

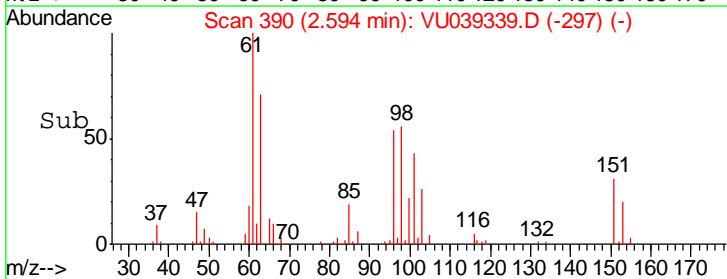
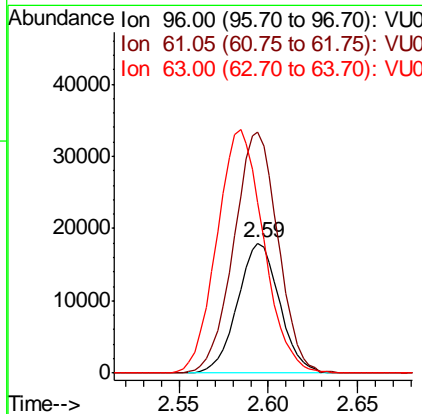
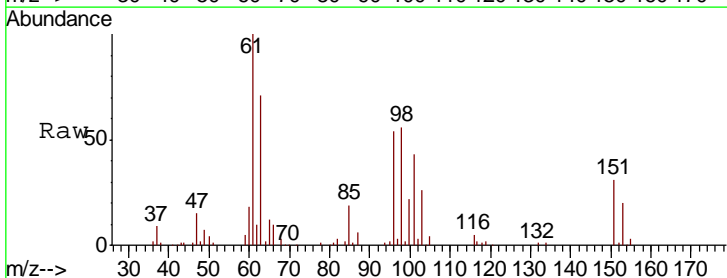
RT: 2.59 min Scan# 390

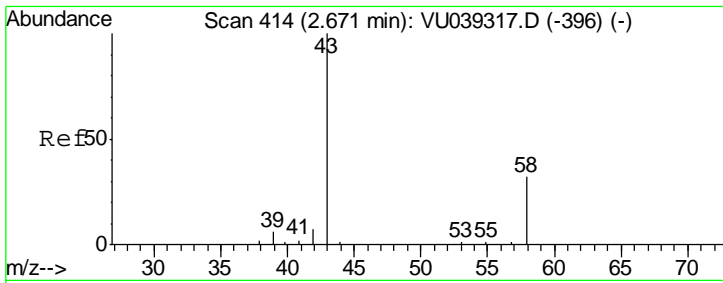
Delta R.T. 0.00 min

Lab File: VU039339.D

Acq: 08 Jul 2020 00:56

Tgt Ion	Resp	Lower	Upper
96	29478		
96	100		
61	185.1	125.4	232.8
63	131.0	92.7	172.3

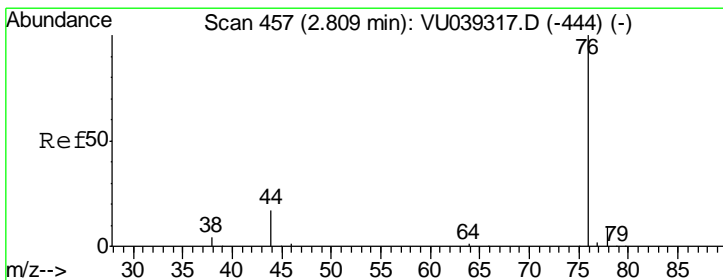
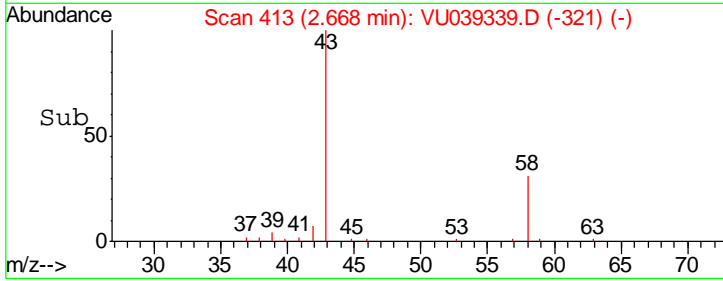
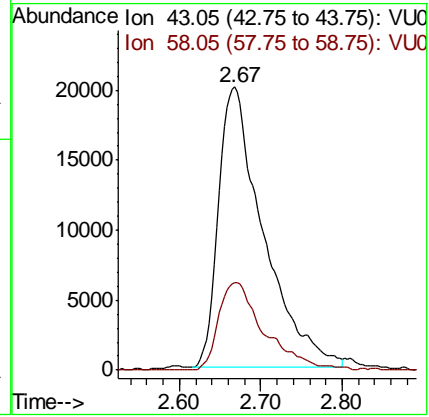
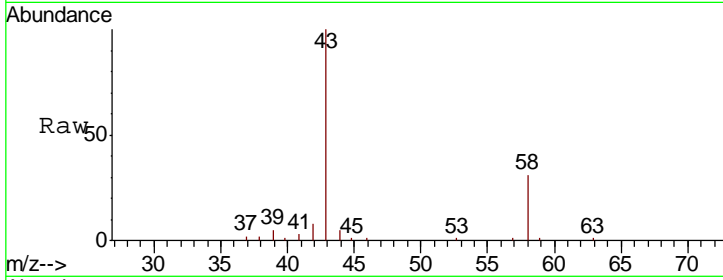




#13
 Acetone
 Concen: 52.474 ug/L
 RT: 2.67 min Scan# 413
 Delta R.T. -0.00 min
 Lab File: VU039339.D
 Acq: 08 Jul 2020 00:56

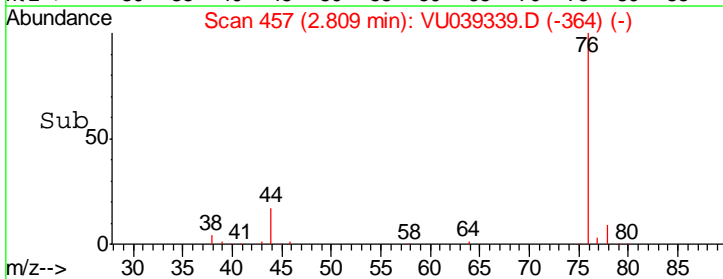
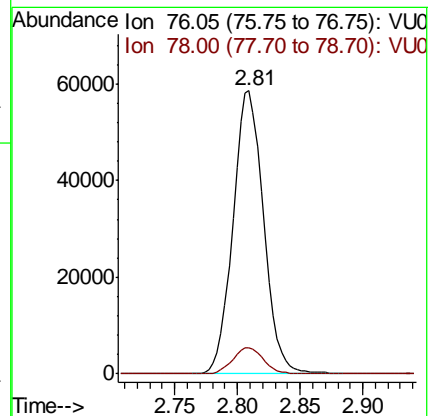
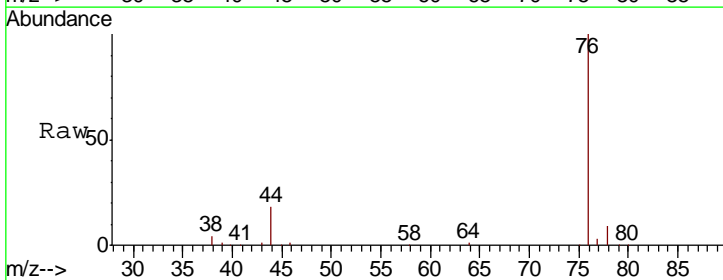
Instrument : MSVOA_U
 ClientSampled : VSTD00530

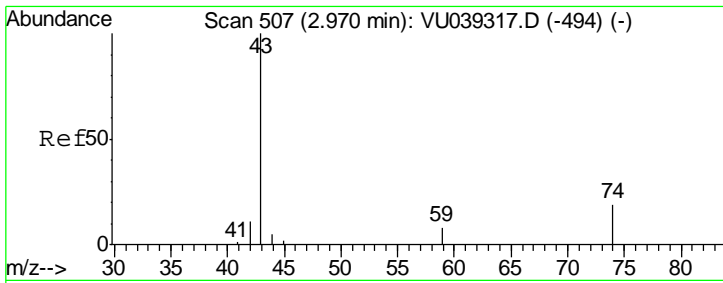
Tgt Ion	Resp	Lower	Upper
43	100		
58	32.1	0.0	62.8



#14
 Carbon disulfide
 Concen: 4.635 ug/L
 RT: 2.81 min Scan# 457
 Delta R.T. 0.00 min
 Lab File: VU039339.D
 Acq: 08 Jul 2020 00:56

Tgt Ion	Resp	Lower	Upper
76	100		
78	9.2	7.0	10.4

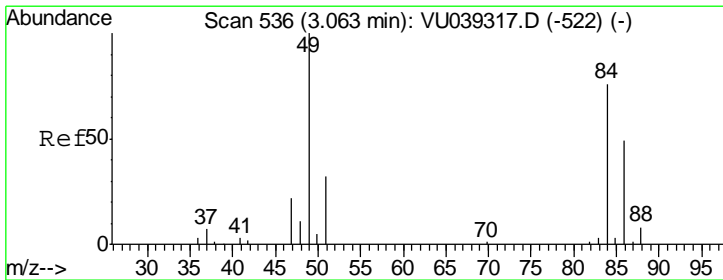
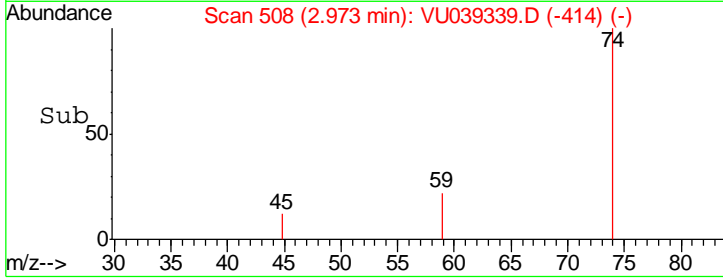
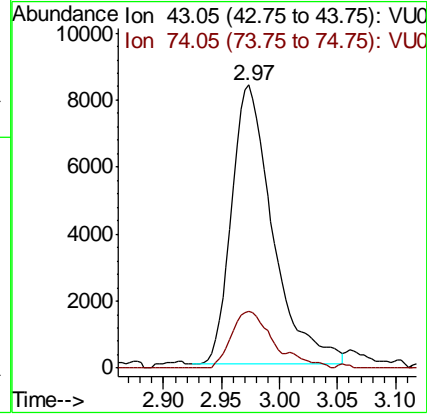
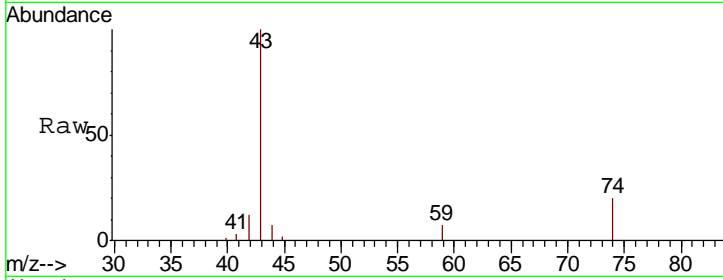




#15
Methyl Acetate
Concen: 5.296 ug/L
RT: 2.97 min Scan# 508
Delta R.T. 0.00 min
Lab File: VU039339.D
Acq: 08 Jul 2020 00:56

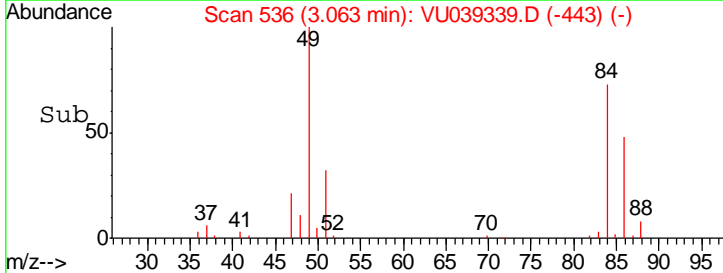
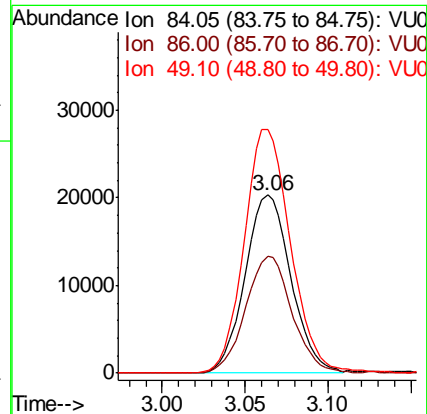
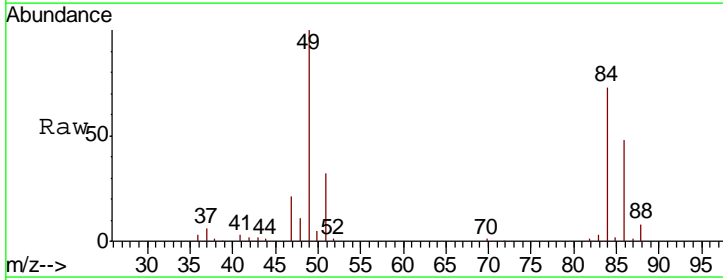
Instrument :
MSVOA_U
ClientSampled :
VSTD00530

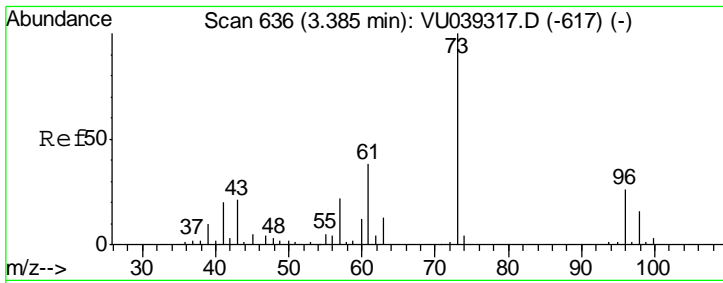
Tgt Ion	Resp	Lower	Upper
43	100		
74	18.5	18.7	28.1#



#16
Methylene chloride
Concen: 5.100 ug/L
RT: 3.06 min Scan# 536
Delta R.T. 0.00 min
Lab File: VU039339.D
Acq: 08 Jul 2020 00:56

Tgt Ion	Resp	Lower	Upper
84	100		
86	65.7	43.5	80.9
49	136.7	91.1	169.1



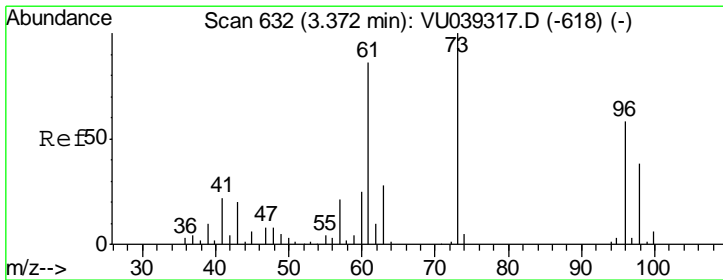
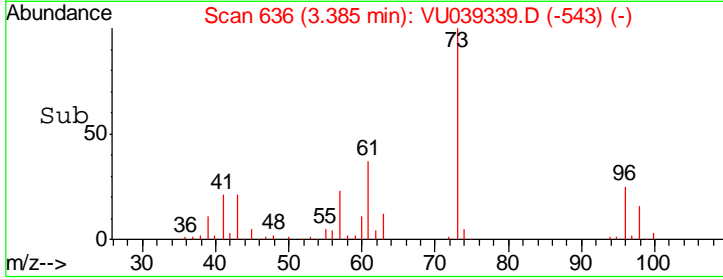
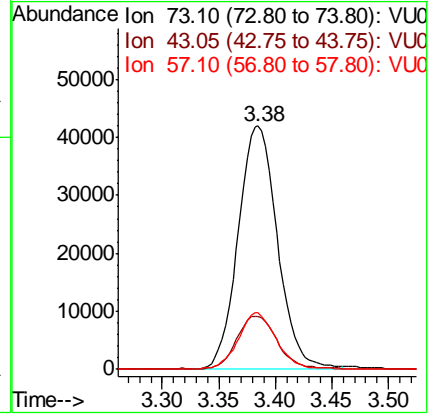
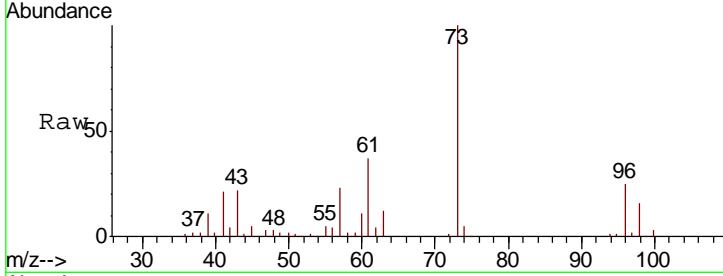


#17
Methyl tert-butyl Ether
Concen: 5.291 ug/L
RT: 3.38 min Scan# 636
Delta R.T. 0.00 min
Lab File: VU039339.D
Acq: 08 Jul 2020 00:56

Instrument :
MSVOA_U
ClientSampled :
VSTD00530

Tgt Ion: 73 Resp: 101679

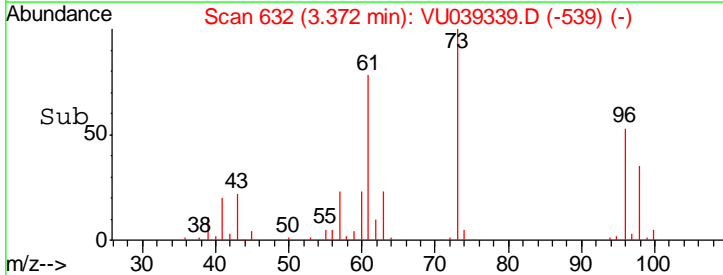
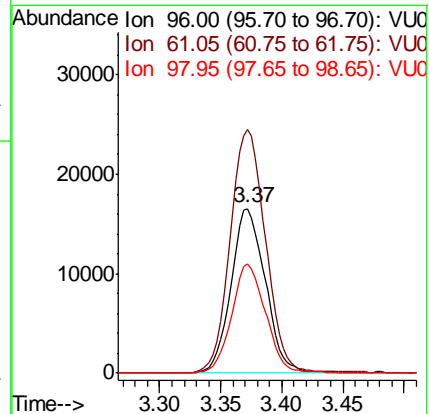
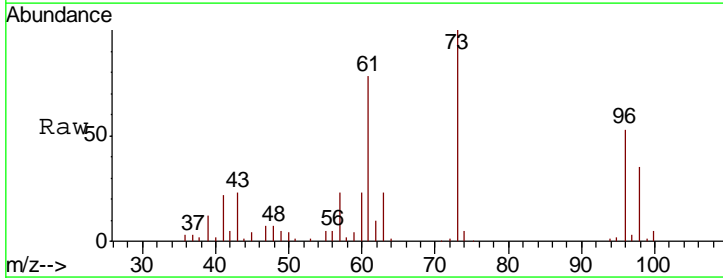
Ion	Ratio	Lower	Upper
73	100		
43	22.8	18.6	28.0
57	22.4	17.9	26.9

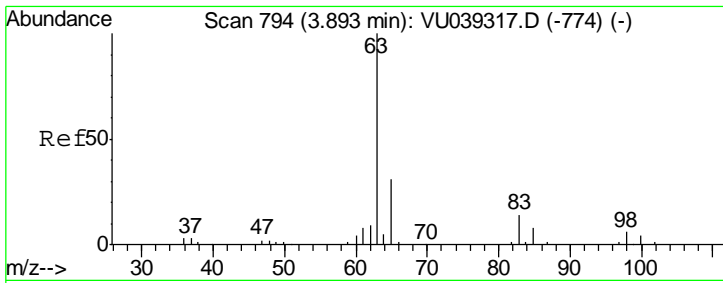


#18
trans-1,2-Dichloroethene
Concen: 4.798 ug/L
RT: 3.37 min Scan# 632
Delta R.T. 0.00 min
Lab File: VU039339.D
Acq: 08 Jul 2020 00:56

Tgt Ion: 96 Resp: 32400

Ion	Ratio	Lower	Upper
96	100		
61	147.7	102.1	189.5
98	66.1	42.5	78.9

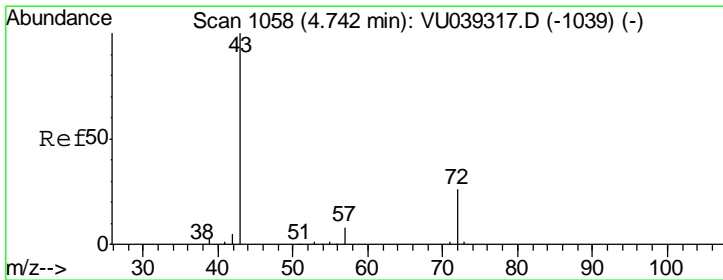
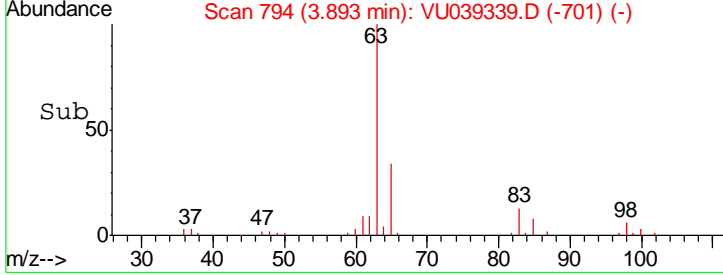
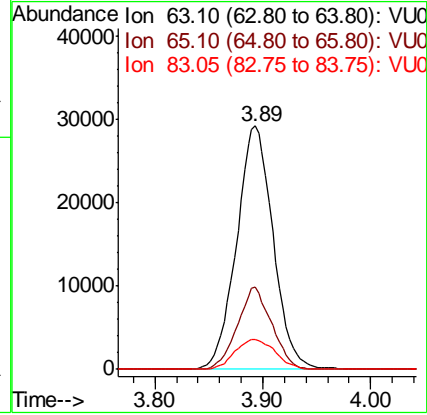
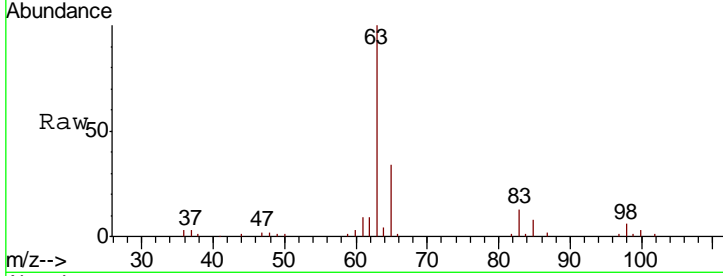




#19
 1,1-Dichloroethane
 Concen: 5.203 ug/L
 RT: 3.89 min Scan# 794
 Delta R.T. 0.00 min
 Lab File: VU039339.D
 Acq: 08 Jul 2020 00:56

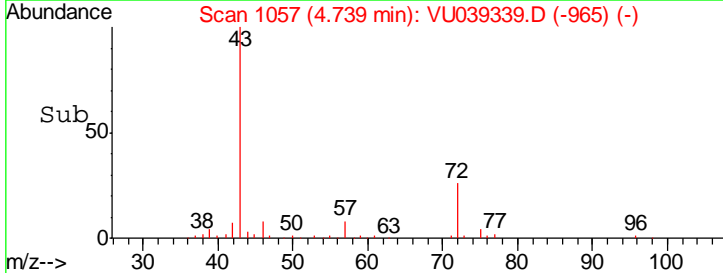
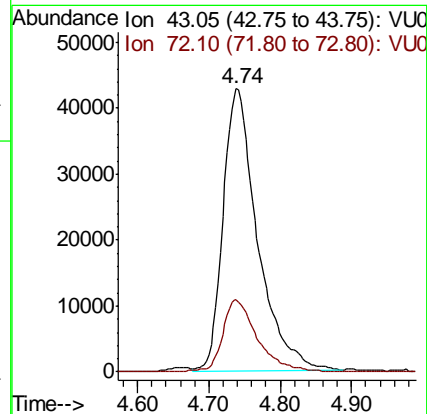
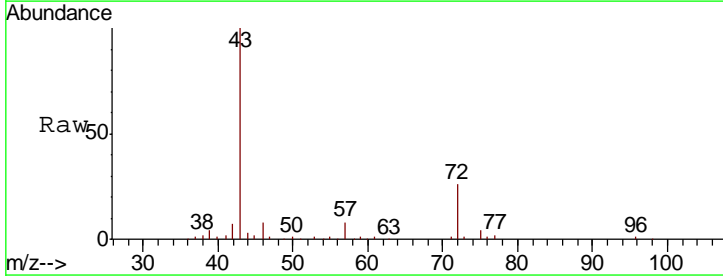
Instrument : MSVOA_U
 ClientSampled : VSTD00530

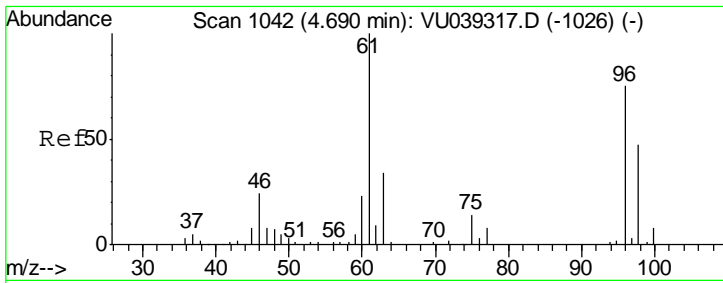
Tgt Ion	Resp	Lower	Upper
63	100		
65	33.7	23.0	42.6
83	12.5	9.6	17.8



#21
 2-Butanone
 Concen: 54.713 ug/L
 RT: 4.74 min Scan# 1057
 Delta R.T. -0.00 min
 Lab File: VU039339.D
 Acq: 08 Jul 2020 00:56

Tgt Ion	Resp	Lower	Upper
43	100		
72	25.7	13.2	39.5

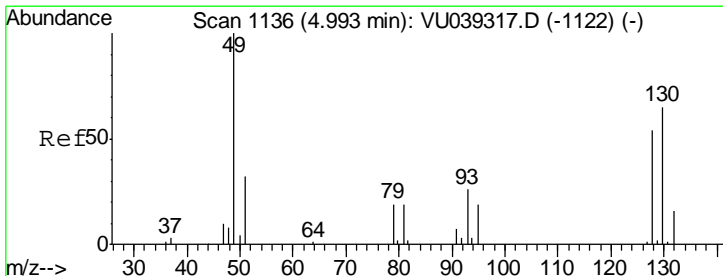
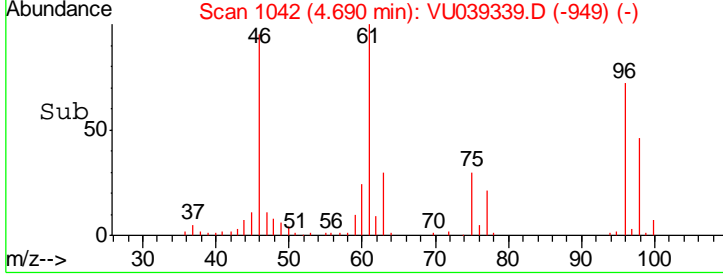
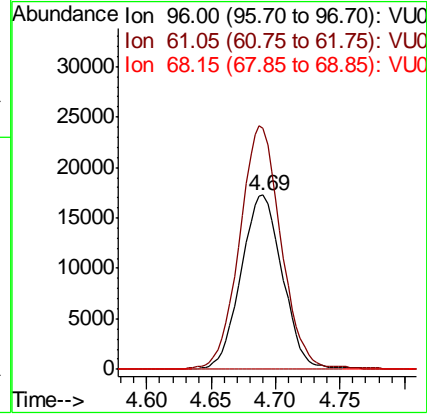
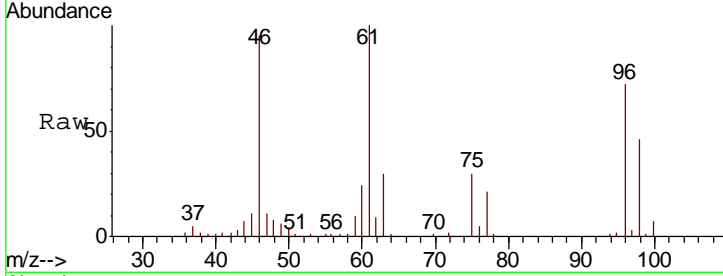




#22
 cis-1,2-Dichloroethene
 Concen: 5.091 ug/L
 RT: 4.69 min Scan# 1042
 Delta R.T. 0.00 min
 Lab File: VU039339.D
 Acq: 08 Jul 2020 00:56

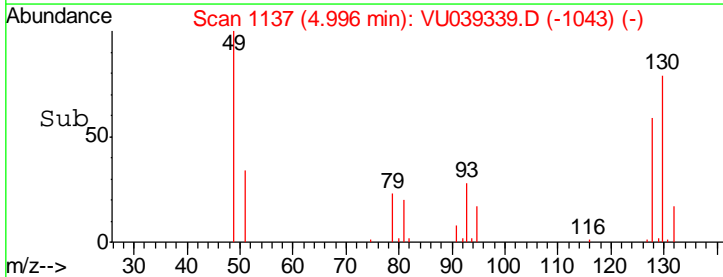
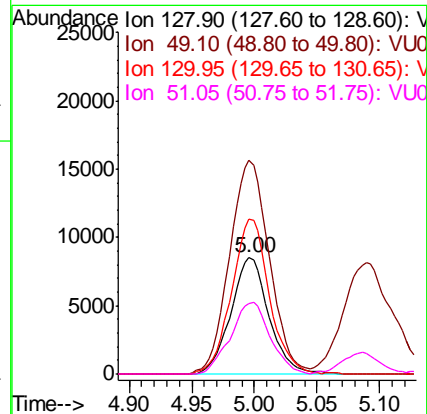
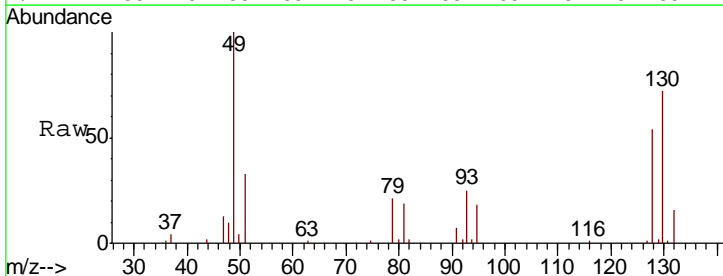
Instrument :
 MSVOA_U
ClientSampled :
 VSTD00530

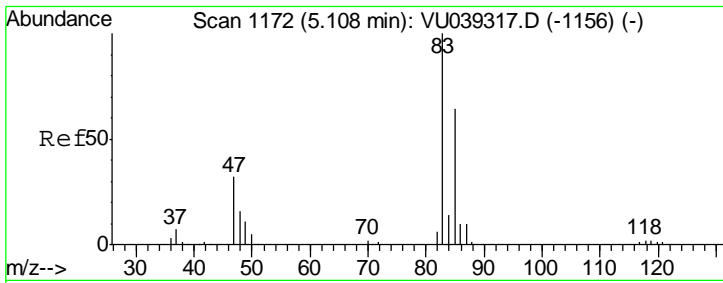
Tgt Ion	Resp	Lower	Upper
96	38543		
61	138.2	92.8	172.4
68	0.0	0.0	0.0



#23
 Bromochloromethane
 Concen: 5.216 ug/L
 RT: 5.00 min Scan# 1137
 Delta R.T. 0.00 min
 Lab File: VU039339.D
 Acq: 08 Jul 2020 00:56

Tgt Ion	Resp	Lower	Upper
128	17942		
49	191.1	128.5	238.7
130	133.0	91.5	169.9
51	61.0	47.0	70.6

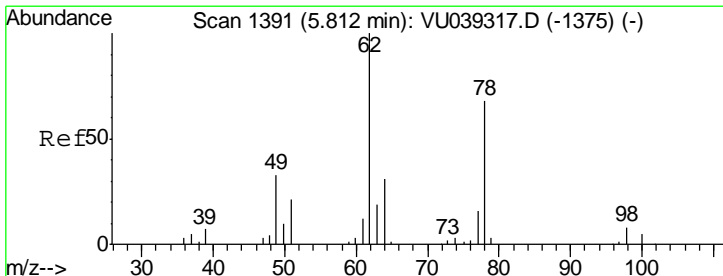
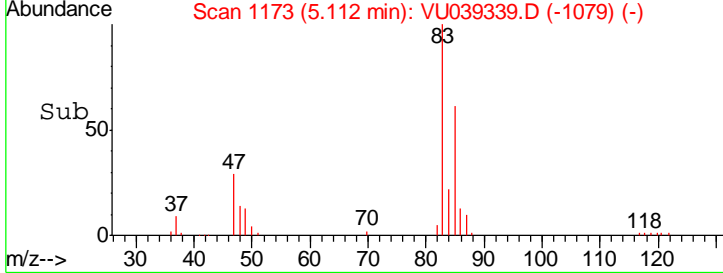
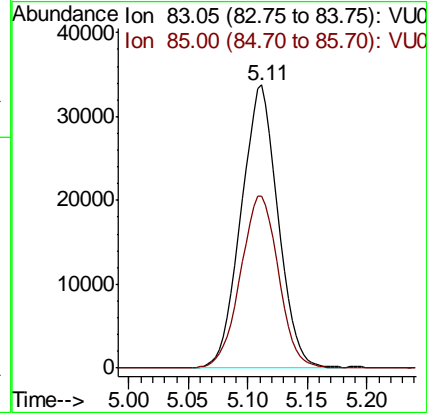
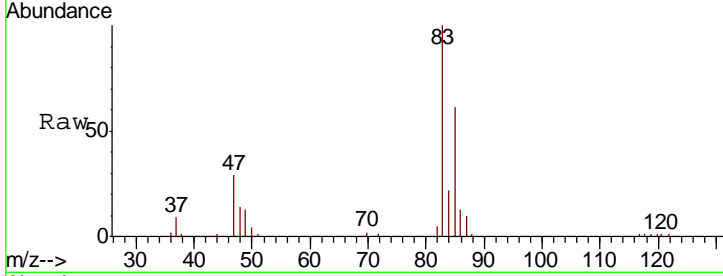




#25
 Chloroform
 Concen: 5.442 ug/L
 RT: 5.11 min Scan# 1173
 Delta R.T. 0.00 min
 Lab File: VU039339.D
 Acq: 08 Jul 2020 00:56

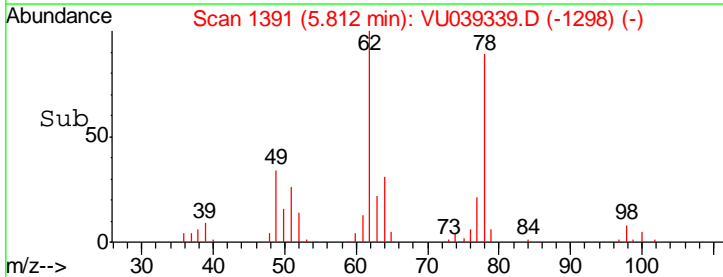
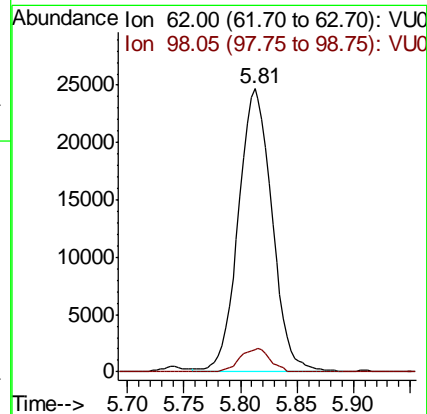
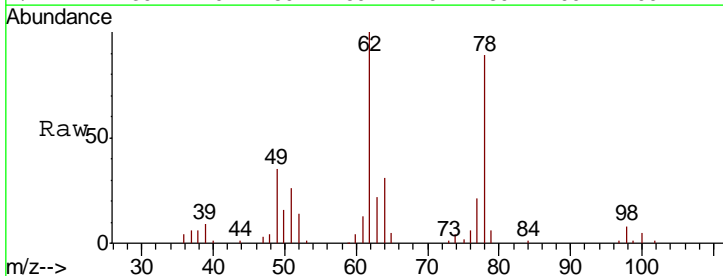
Instrument :
 MSVOA_U
ClientSampled :
 VSTD00530

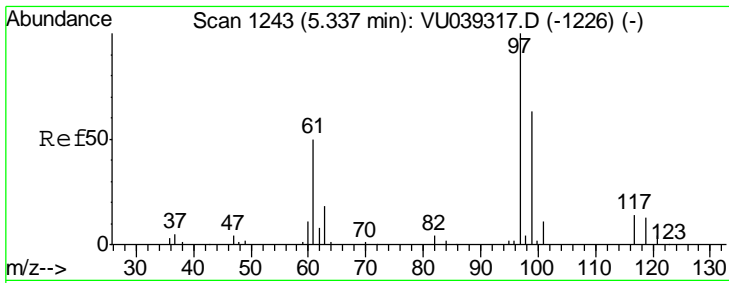
Tgt Ion	Resp	Lower	Upper
83	72606		
85	60.6	44.9	83.5



#27
 1,2-Dichloroethane
 Concen: 5.316 ug/L
 RT: 5.81 min Scan# 1391
 Delta R.T. 0.00 min
 Lab File: VU039339.D
 Acq: 08 Jul 2020 00:56

Tgt Ion	Resp	Lower	Upper
62	51303		
98	7.7	6.3	9.5

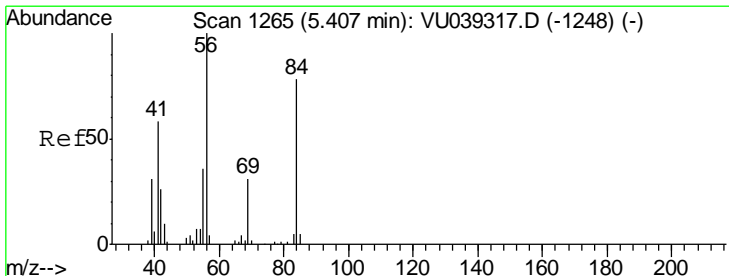
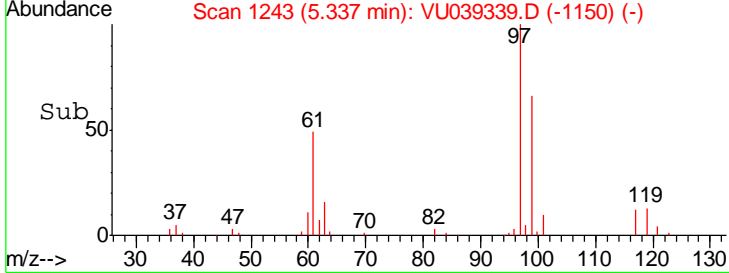
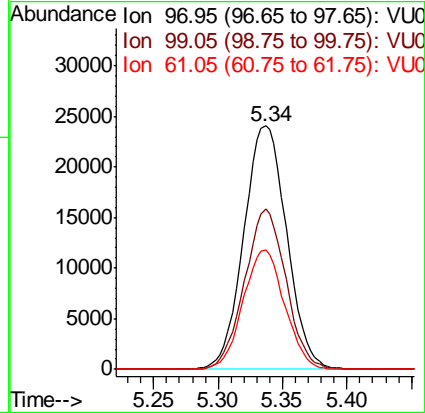
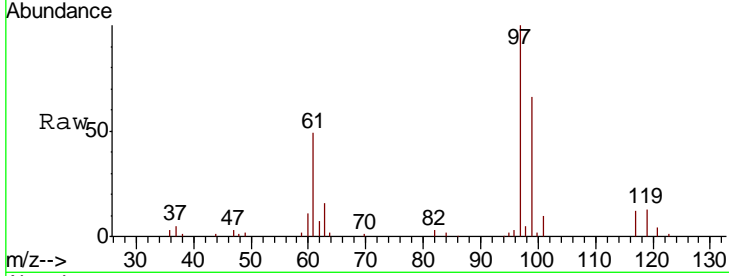




#29
 1,1,1-Trichloroethane
 Concen: 4.986 ug/L
 RT: 5.34 min Scan# 1243
 Delta R.T. 0.00 min
 Lab File: VU039339.D
 Acq: 08 Jul 2020 00:56

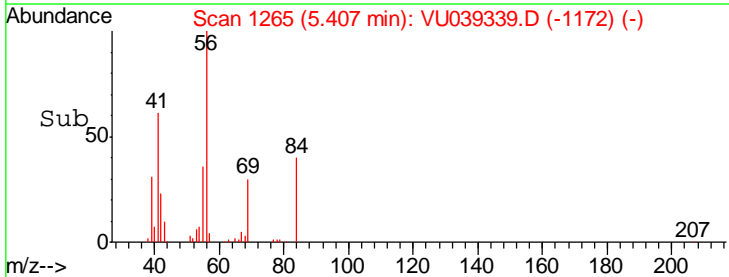
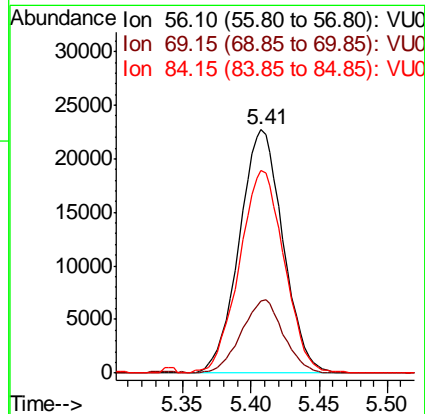
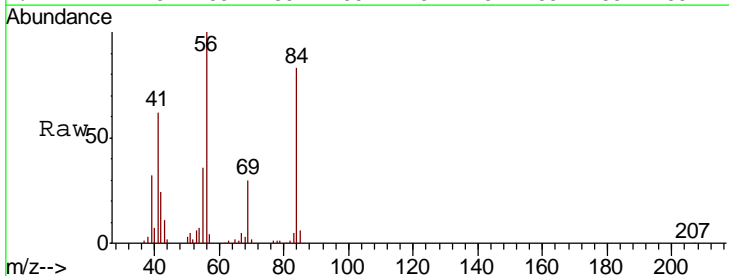
Instrument :
 MSVOA_U
 ClientSampled :
 VSTD00530

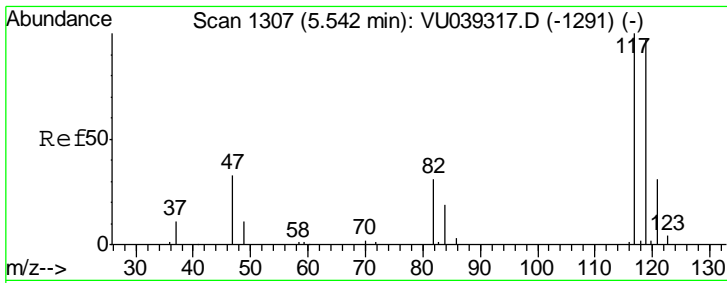
Tgt Ion	Resp	Lower	Upper
97	55887		
99	63.4	52.6	79.0
61	47.4	37.9	56.9



#30
 Cyclohexane
 Concen: 4.274 ug/L
 RT: 5.41 min Scan# 1265
 Delta R.T. 0.00 min
 Lab File: VU039339.D
 Acq: 08 Jul 2020 00:56

Tgt Ion	Resp	Lower	Upper
56	50429		
69	29.0	24.1	36.1
84	85.6	67.0	100.6

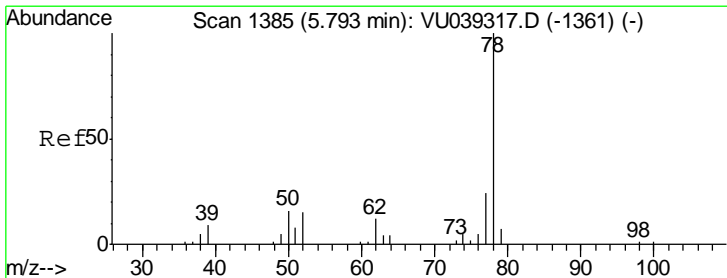
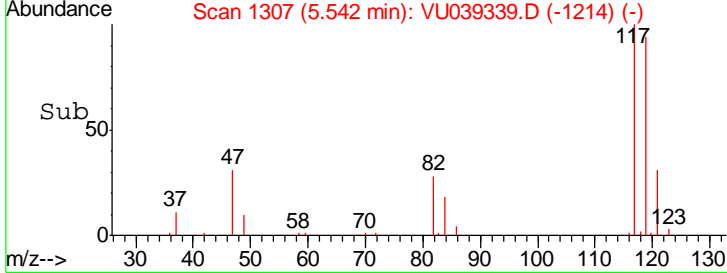
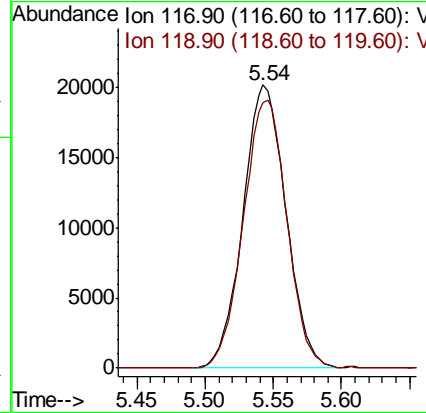
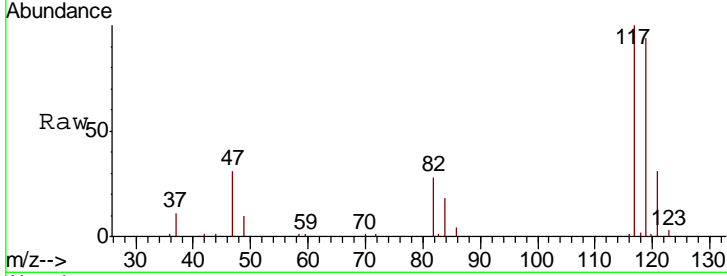




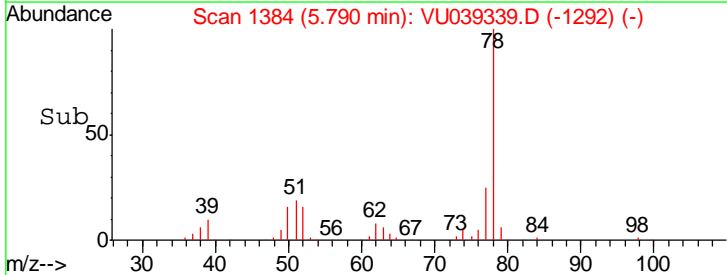
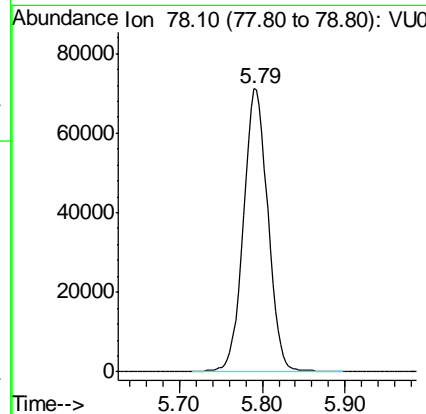
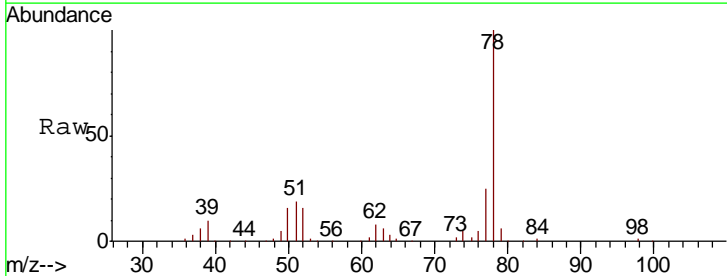
#31
 Carbon tetrachloride
 Concen: 4.610 ug/L
 RT: 5.54 min Scan# 1307
 Delta R.T. 0.00 min
 Lab File: VU039339.D
 Acq: 08 Jul 2020 00:56

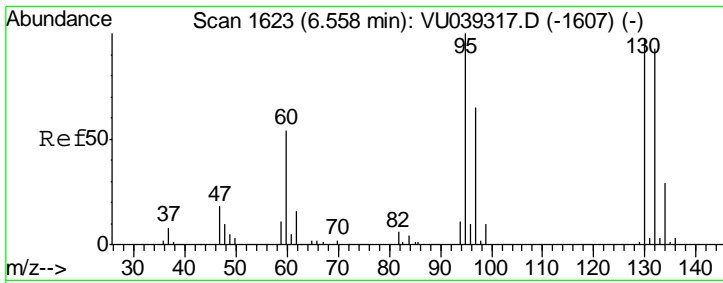
Instrument : MSVOA_U
 ClientSampled : VSTD00530

Tgt Ion: 117 Resp: 44079
 Ion Ratio Lower Upper
 117 100
 119 95.8 77.4 116.0



#33
 Benzene
 Concen: 5.151 ug/L
 RT: 5.79 min Scan# 1384
 Delta R.T. -0.00 min
 Lab File: VU039339.D
 Acq: 08 Jul 2020 00:56
 Tgt Ion: 78 Resp: 146561





#34

Trichloroethene

Concen: 4.924 ug/L

RT: 6.56 min Scan# 1622

Delta R.T. -0.00 min

Lab File: VU039339.D

Acq: 08 Jul 2020 00:56

Instrument :
MSVOA_U
ClientSampleId :
VSTD00530

Tgt Ion: 95 Resp: 36220

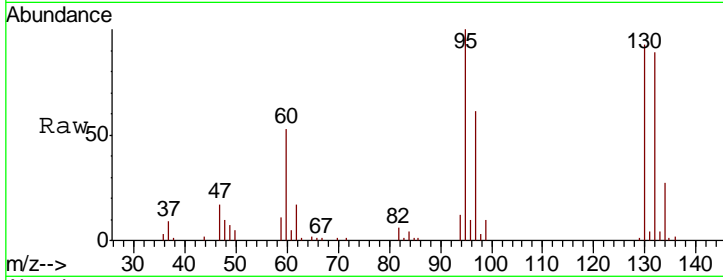
Ion Ratio Lower Upper

95 100

97 60.7 46.3 85.9

132 88.5 64.0 118.8

130 92.6 64.3 119.5

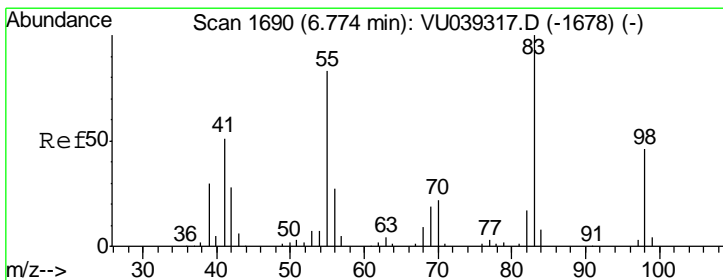
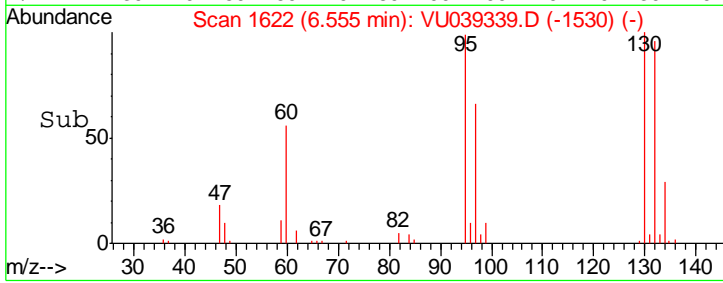
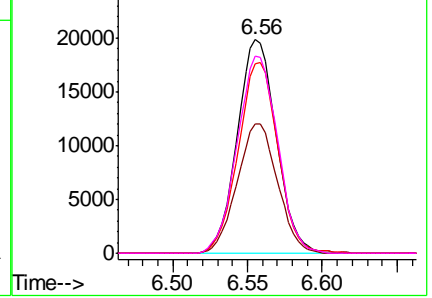


Abundance Ion 95.00 (94.70 to 95.70): VU0

Ion 96.95 (96.65 to 97.65): VU0

Ion 131.95 (131.65 to 132.65): V

Ion 129.95 (129.65 to 130.65): V



#35

Methylcyclohexane

Concen: 4.230 ug/L

RT: 6.78 min Scan# 1691

Delta R.T. 0.00 min

Lab File: VU039339.D

Acq: 08 Jul 2020 00:56

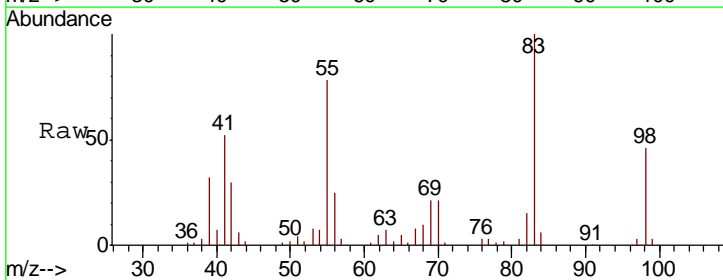
Tgt Ion: 83 Resp: 49847

Ion Ratio Lower Upper

83 100

55 80.0 62.1 93.1

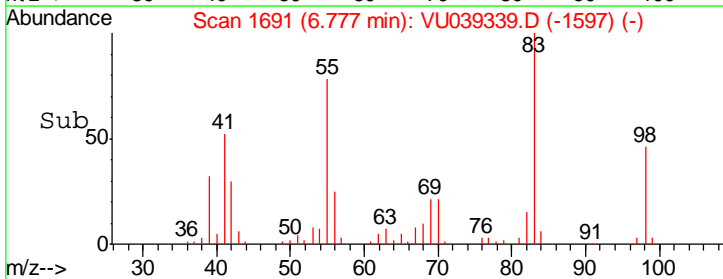
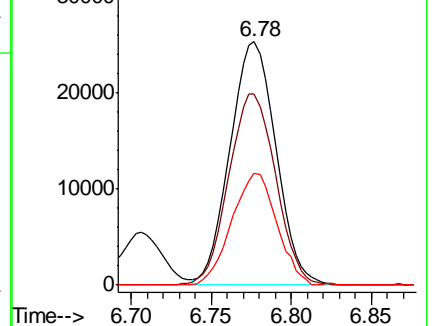
98 44.9 35.9 53.9

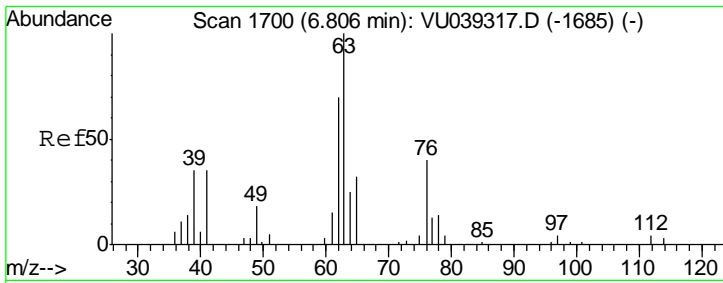


Abundance Ion 83.15 (82.85 to 83.85): VU0

Ion 55.10 (54.80 to 55.80): VU0

Ion 98.15 (97.85 to 98.85): VU0



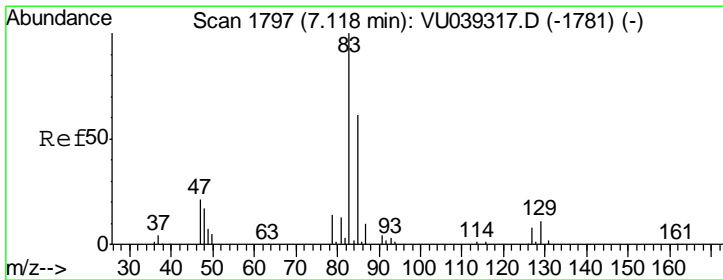
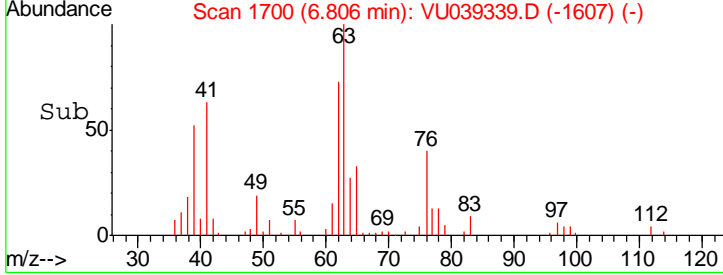
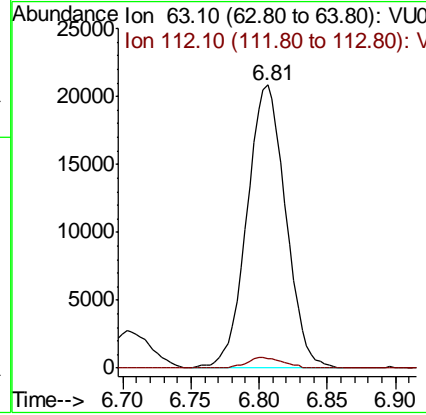
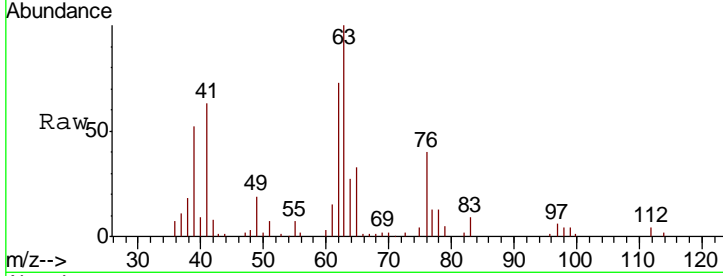


#37
 1,2-Dichloropropane
 Concen: 5.297 ug/L
 RT: 6.81 min Scan# 1700
 Delta R.T. 0.00 min
 Lab File: VU039339.D
 Acq: 08 Jul 2020 00:56

Instrument : MSVOA_U
 ClientSampled : VSTD00530

Tgt Ion: 63 Resp: 41081

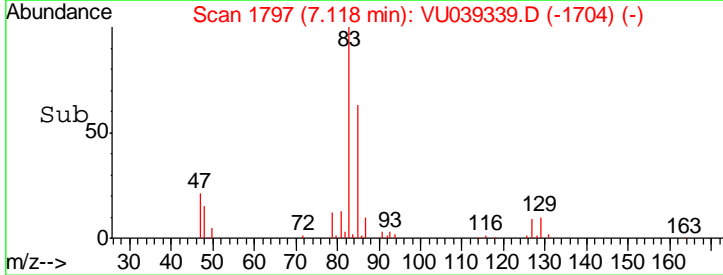
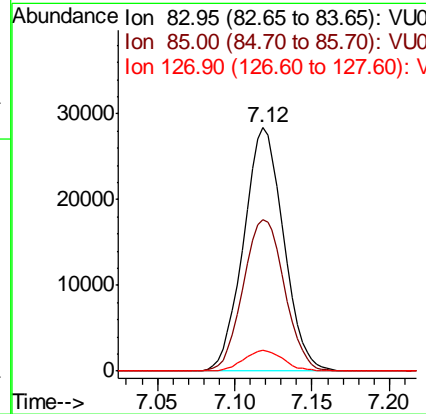
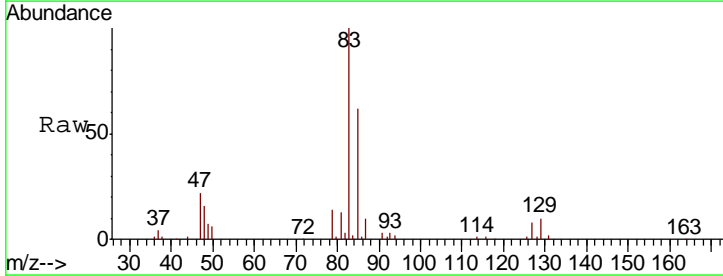
Ion	Ratio	Lower	Upper
63	100		
112	3.5	2.5	3.7

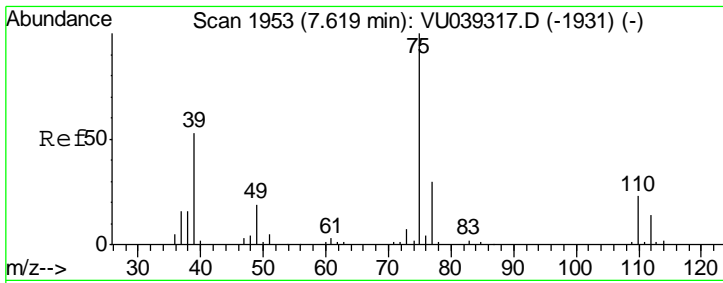


#38
 Bromodichloromethane
 Concen: 5.165 ug/L
 RT: 7.12 min Scan# 1797
 Delta R.T. 0.00 min
 Lab File: VU039339.D
 Acq: 08 Jul 2020 00:56

Tgt Ion: 83 Resp: 51157

Ion	Ratio	Lower	Upper
83	100		
85	62.3	44.0	81.6
127	8.4	6.2	9.4

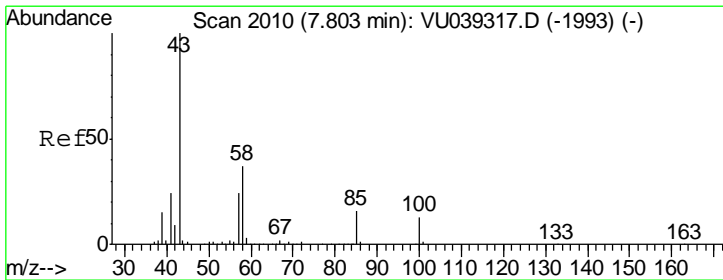
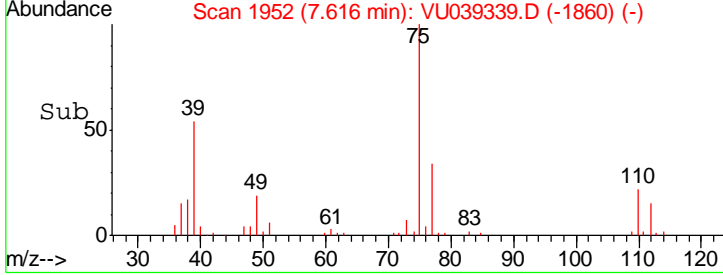
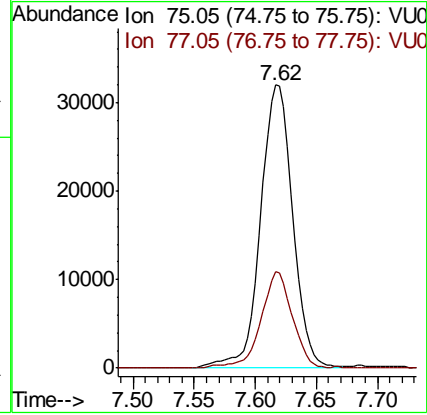
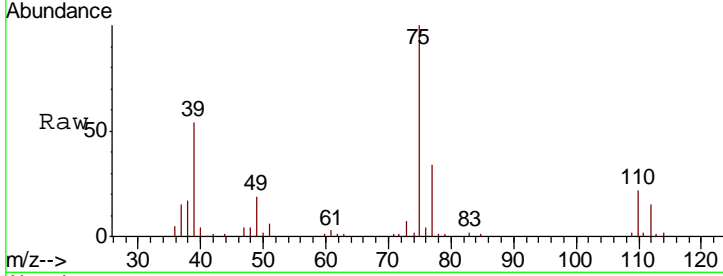




#39
 cis-1,3-Dichloropropene
 Concen: 4.975 ug/L
 RT: 7.62 min Scan# 1952
 Delta R.T. -0.00 min
 Lab File: VU039339.D
 Acq: 08 Jul 2020 00:56

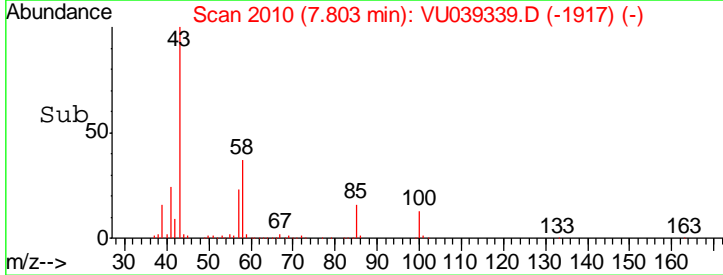
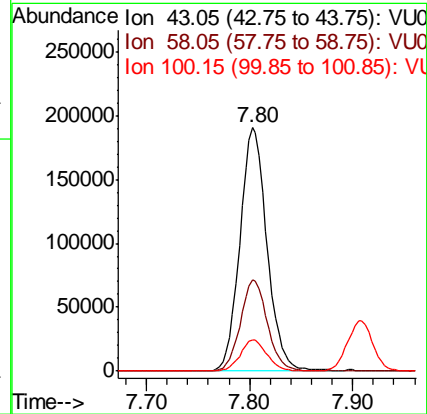
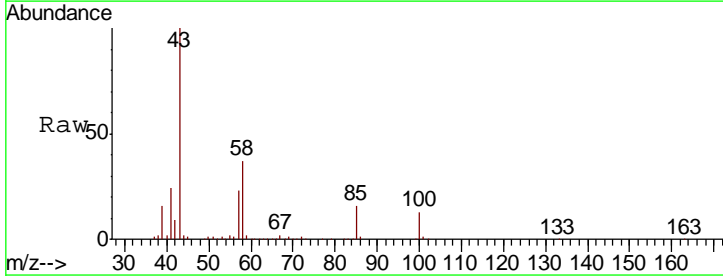
Instrument :
 MSVOA_U
ClientSampled :
 VSTD00530

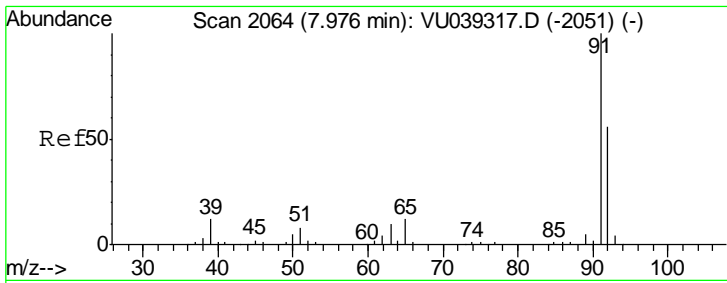
Tgt Ion	Resp	Lower	Upper
75	58322		
77	33.9	22.3	41.3



#40
 4-Methyl-2-pentanone
 Concen: 53.852 ug/L
 RT: 7.80 min Scan# 2010
 Delta R.T. 0.00 min
 Lab File: VU039339.D
 Acq: 08 Jul 2020 00:56

Tgt Ion	Resp	Lower	Upper
43	348423		
58	37.2	30.5	45.7
100	12.7	10.3	15.5



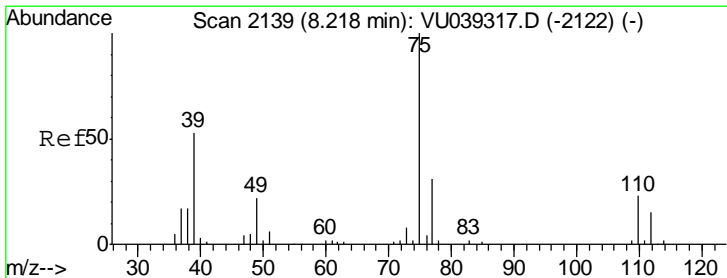
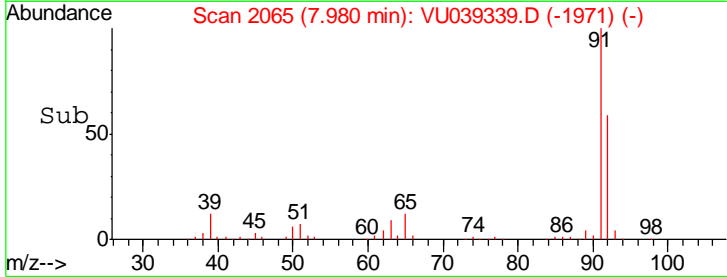
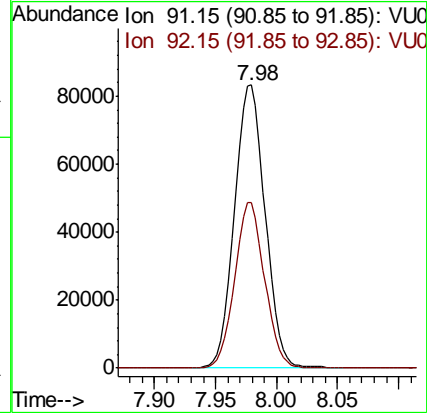
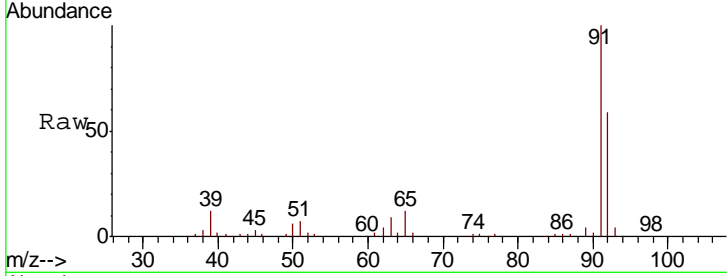


#42

Toluene
 Concen: 4.790 ug/L
 RT: 7.98 min Scan# 2065
 Delta R.T. 0.00 min
 Lab File: VU039339.D
 Acq: 08 Jul 2020 00:56

Instrument :
 MSVOA_U
 ClientSampled :
 VSTD00530

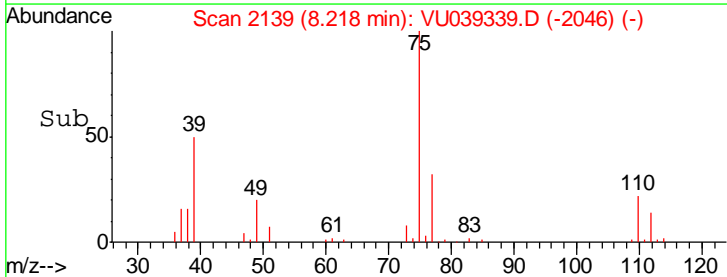
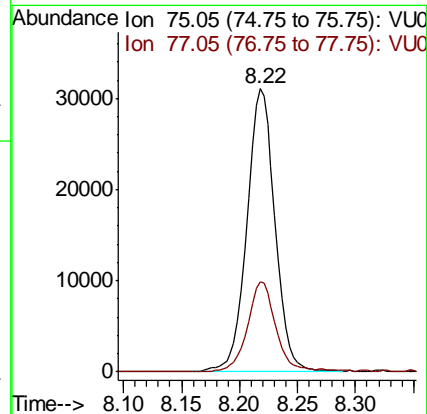
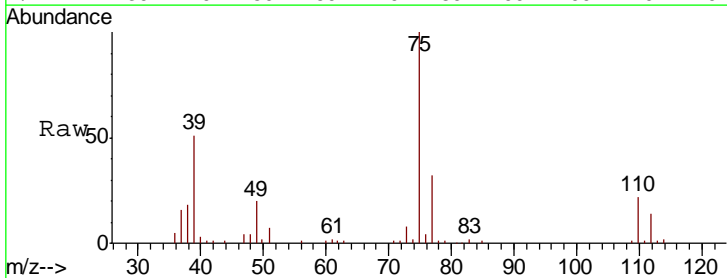
Tot Ion: 91 Resp: 145930
 Ion Ratio Lower Upper
 91 100
 92 58.5 39.3 73.1

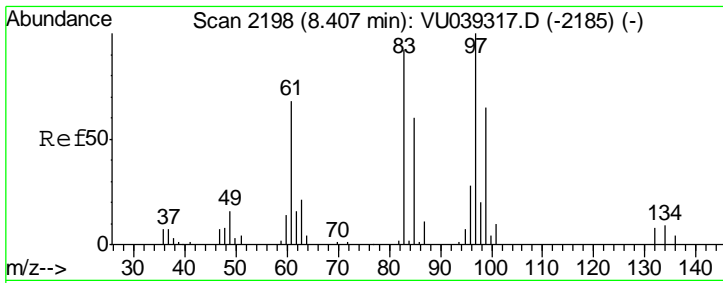


#44

trans-1,3-Dichloropropene
 Concen: 5.047 ug/L
 RT: 8.22 min Scan# 2139
 Delta R.T. 0.00 min
 Lab File: VU039339.D
 Acq: 08 Jul 2020 00:56

Tgt Ion: 75 Resp: 52491
 Ion Ratio Lower Upper
 75 100
 77 32.0 23.7 43.9

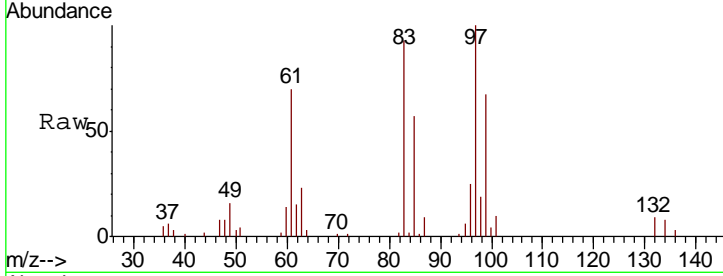




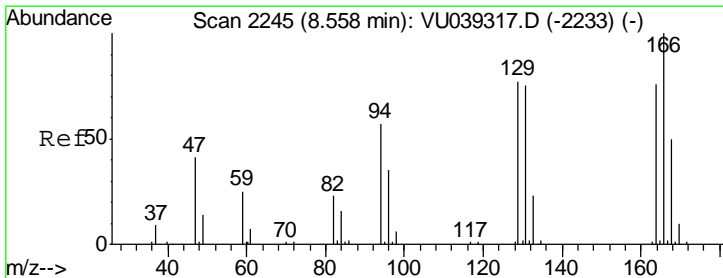
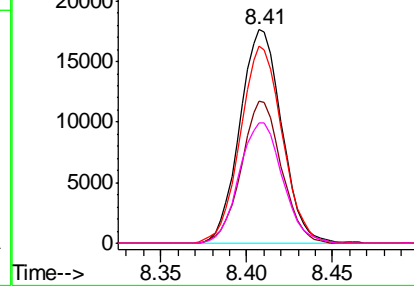
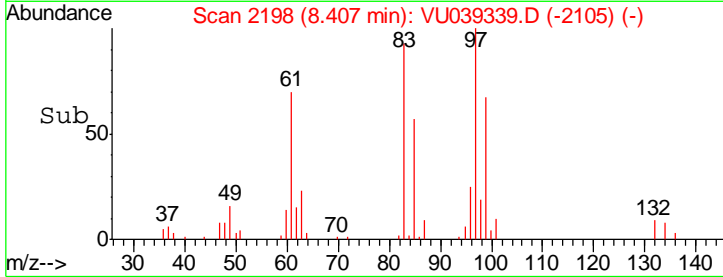
#45
 1,1,2-Trichloroethane
 Concen: 5.372 ug/L
 RT: 8.41 min Scan# 2198
 Delta R.T. 0.00 min
 Lab File: VU039339.D
 Acq: 08 Jul 2020 00:56

Instrument :
 MSVOA_U
 ClientSampled :
 VSTD00530

Tgt Ion	Resp	Lower	Upper
97	100		
99	66.8	40.7	75.7
83	92.6	60.6	112.6
85	56.6	38.3	71.1

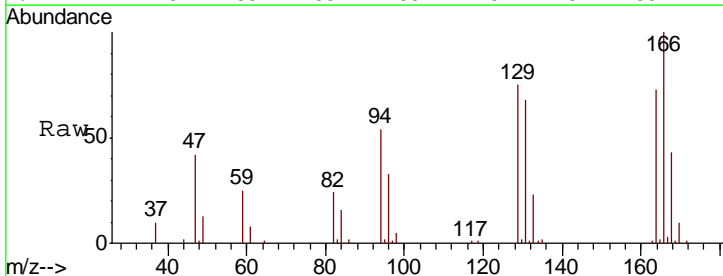


Abundance Ion 96.95 (96.65 to 97.65): VU0
 Ion 99.05 (98.75 to 99.75): VU0
 Ion 82.95 (82.65 to 83.65): VU0
 Ion 85.00 (84.70 to 85.70): VU0

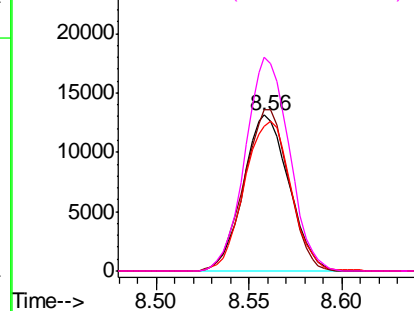
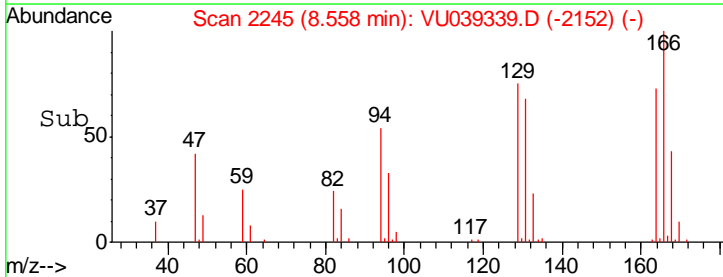


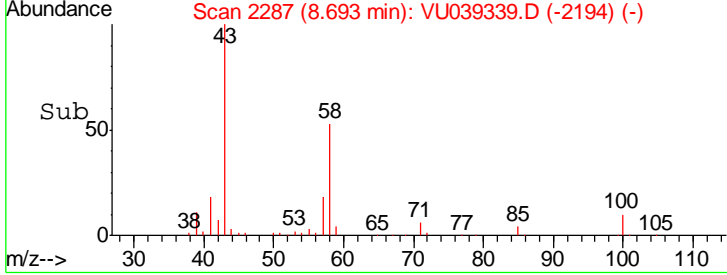
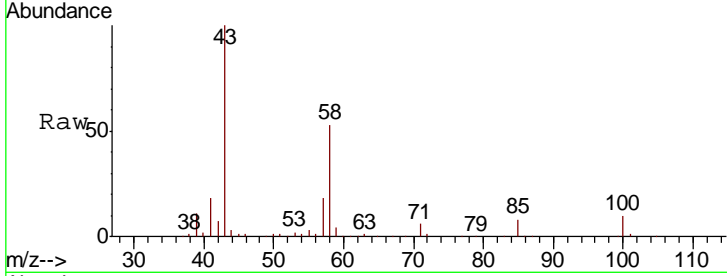
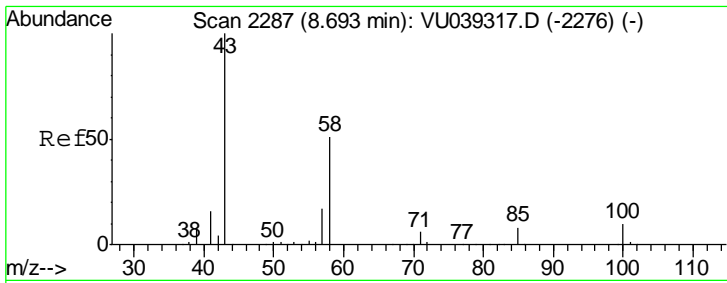
#47
 Tetrachloroethene
 Concen: 4.372 ug/L
 RT: 8.56 min Scan# 2245
 Delta R.T. 0.00 min
 Lab File: VU039339.D
 Acq: 08 Jul 2020 00:56

Tgt Ion	Resp	Lower	Upper
164	100		
129	103.3	68.6	127.4
131	93.2	66.4	123.4
166	137.2	85.9	159.5



Abundance Ion 163.90 (163.60 to 164.60): V
 Ion 128.95 (128.65 to 129.65): V
 Ion 130.95 (130.65 to 131.65): V
 Ion 165.90 (165.60 to 166.60): V

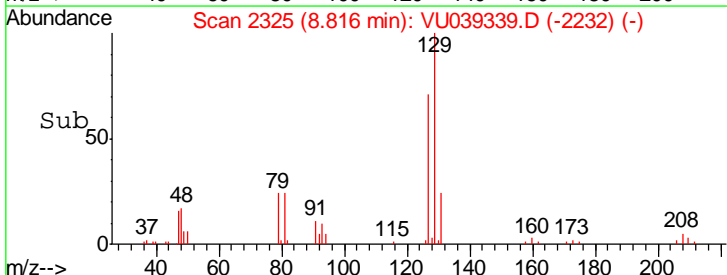
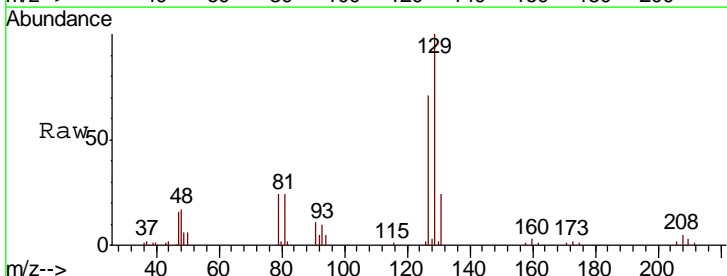
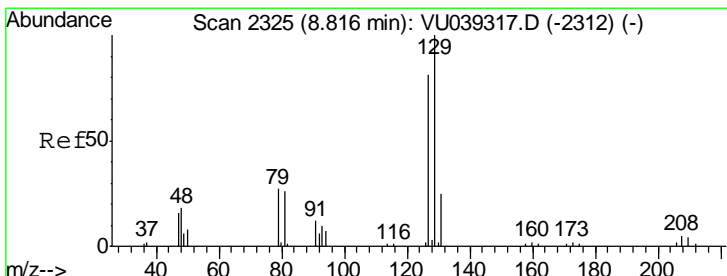
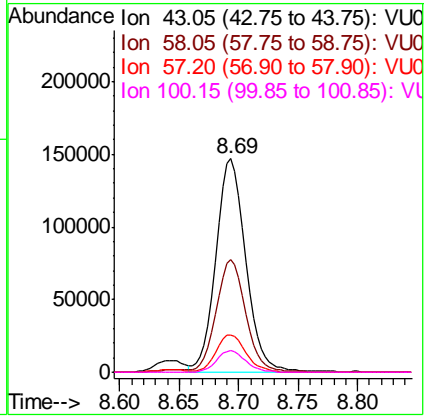




#48
 2-Hexanone
 Concen: 53.333 ug/L
 RT: 8.69 min Scan# 2287
 Delta R.T. 0.00 min
 Lab File: VU039339.D
 Acq: 08 Jul 2020 00:56

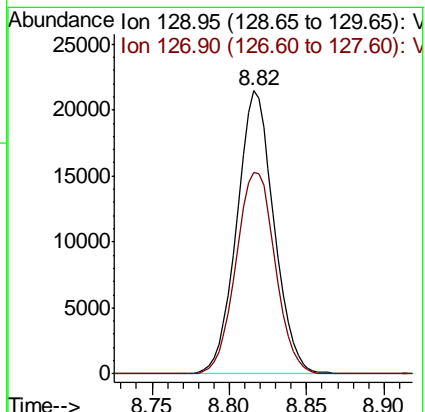
Instrument : MSVOA_U
 ClientSampleID : VSTD00530

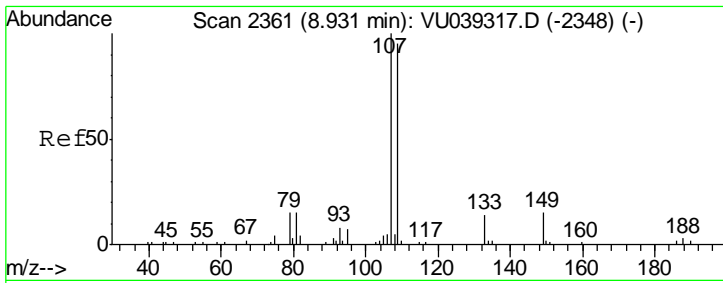
Tgt Ion	Resp	Lower	Upper
43	254428		
58	52.3	42.0	63.0
57	17.5	14.0	21.0
100	9.9	8.2	12.2



#49
 Dibromochloromethane
 Concen: 5.302 ug/L
 RT: 8.82 min Scan# 2325
 Delta R.T. 0.00 min
 Lab File: VU039339.D
 Acq: 08 Jul 2020 00:56

Tgt Ion	Resp	Lower	Upper
129	35776		
127	71.2	55.4	102.8

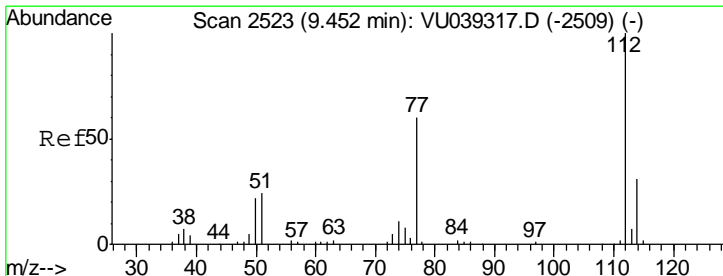
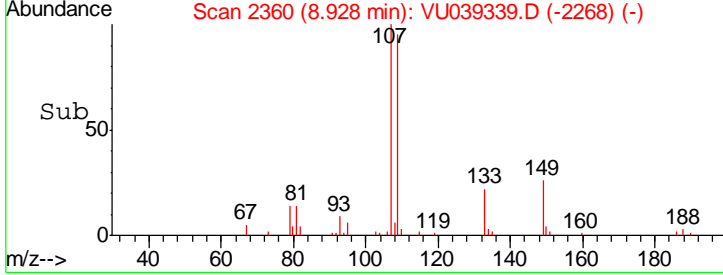
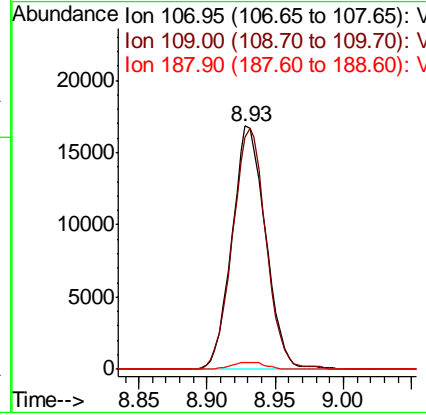
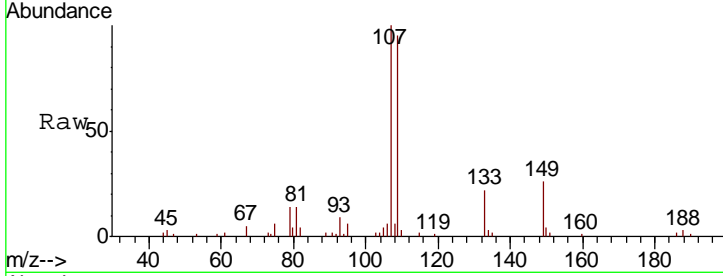




#50
 1,2-Dibromoethane
 Concen: 5.107 ug/L
 RT: 8.93 min Scan# 2360
 Delta R.T. -0.00 min
 Lab File: VU039339.D
 Acq: 08 Jul 2020 00:56

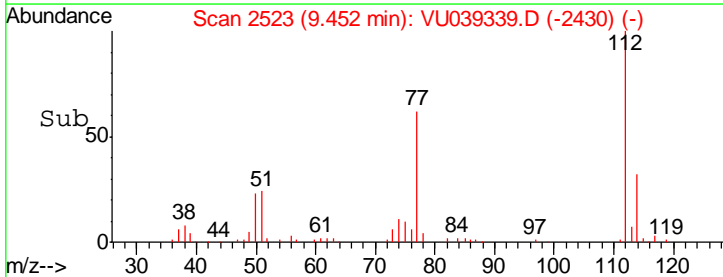
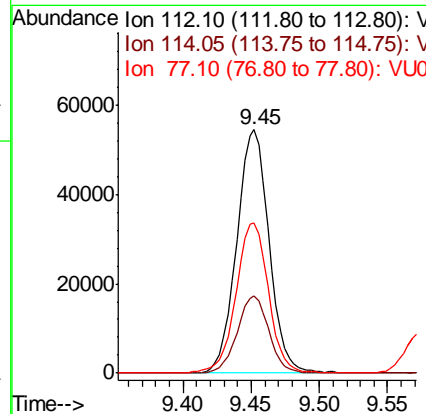
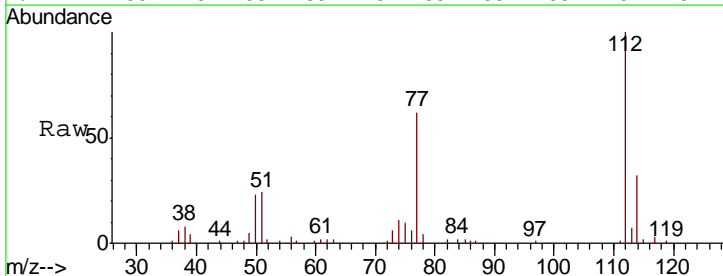
Instrument : MSVOA_U
 ClientSampled : VSTD00530

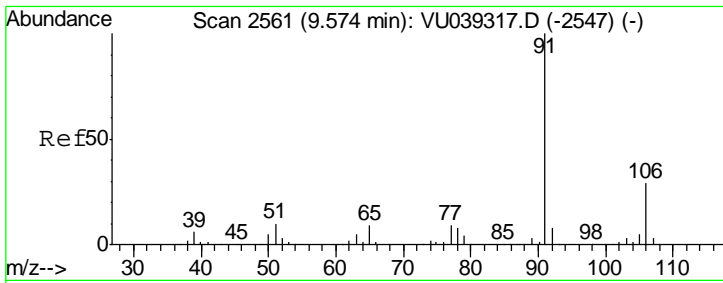
Tgt Ion	Resp	Lower	Upper
107	28902		
109	95.2	64.0	118.8
188	2.9	2.6	3.8



#51
 Chlorobenzene
 Concen: 4.811 ug/L
 RT: 9.45 min Scan# 2523
 Delta R.T. 0.00 min
 Lab File: VU039339.D
 Acq: 08 Jul 2020 00:56

Tgt Ion	Resp	Lower	Upper
112	89568		
114	31.7	22.1	41.1
77	61.6	49.9	74.9

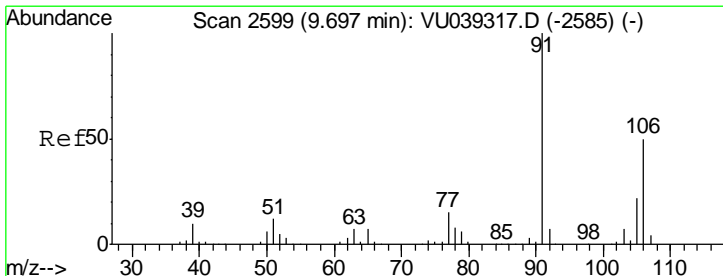
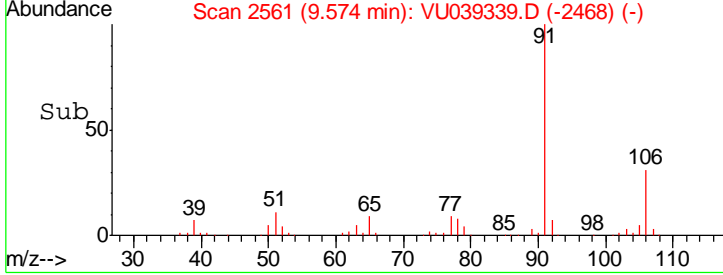
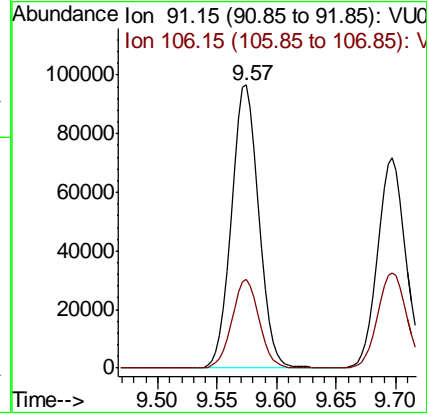
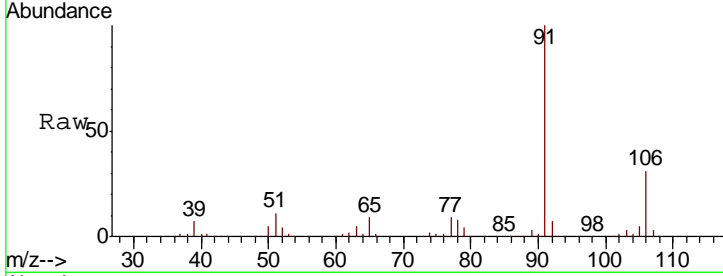




#52
Ethylbenzene
Concen: 4.571 ug/L
RT: 9.57 min Scan# 2561
Delta R.T. 0.00 min
Lab File: VU039339.D
Acq: 08 Jul 2020 00:56

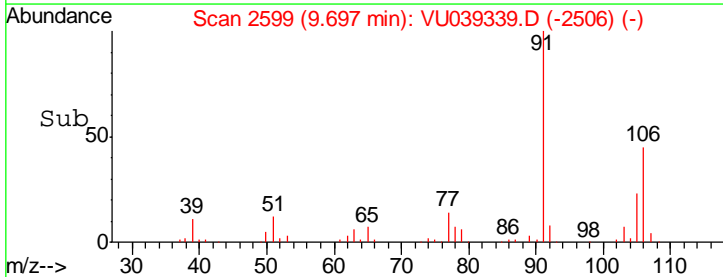
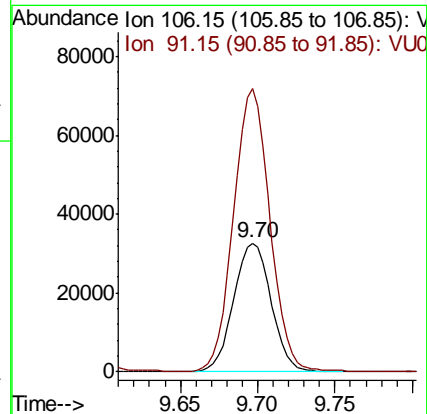
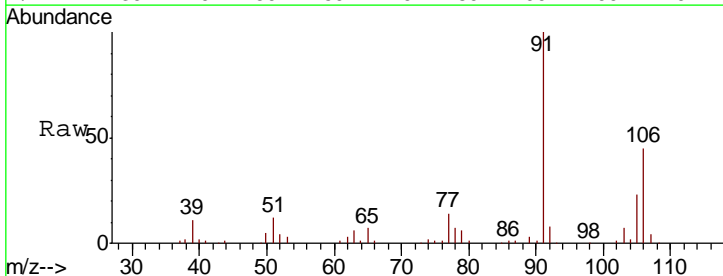
Instrument :
MSVOA_U
ClientSampled :
VSTD00530

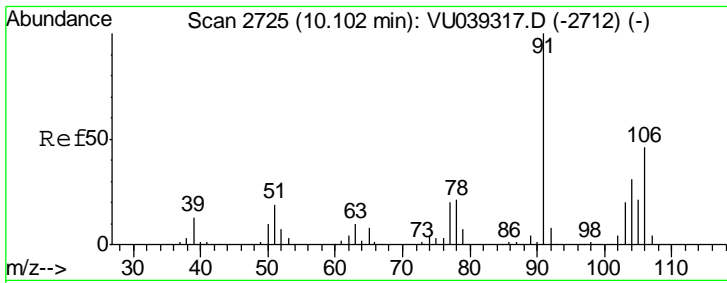
Tgt Ion: 91 Resp: 153889
Ion Ratio Lower Upper
91 100
106 31.4 21.3 39.6



#53
m,p-Xylene
Concen: 4.322 ug/L
RT: 9.70 min Scan# 2599
Delta R.T. 0.00 min
Lab File: VU039339.D
Acq: 08 Jul 2020 00:56

Tgt Ion: 106 Resp: 54827
Ion Ratio Lower Upper
106 100
91 220.0 144.0 267.4

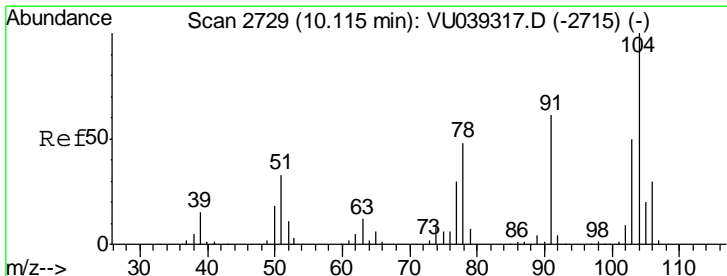
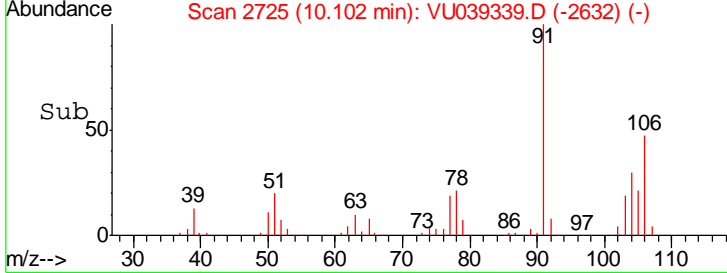
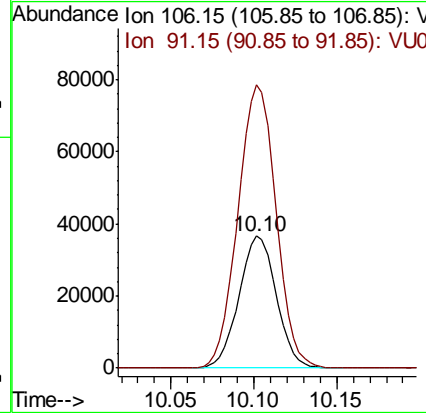
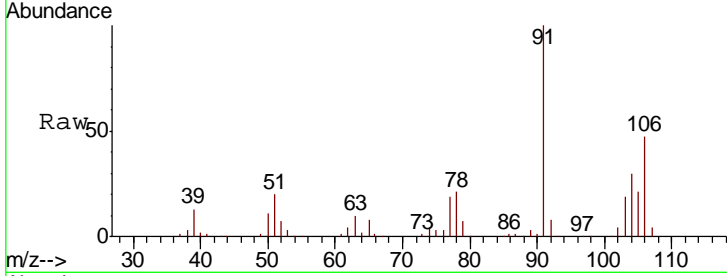




#54
 o-Xylene
 Concen: 4.653 ug/L
 RT: 10.10 min Scan# 2725
 Delta R.T. 0.00 min
 Lab File: VU039339.D
 Acq: 08 Jul 2020 00:56

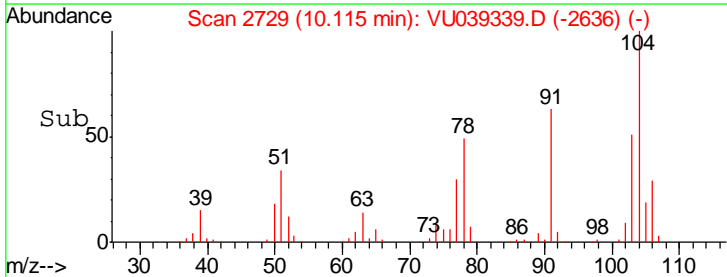
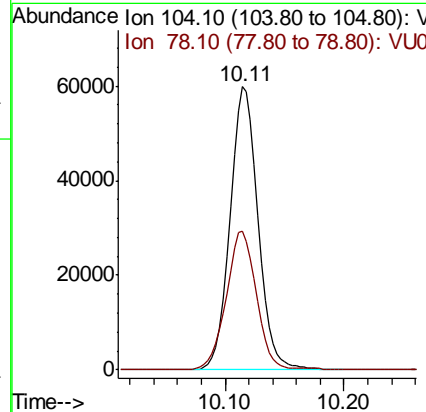
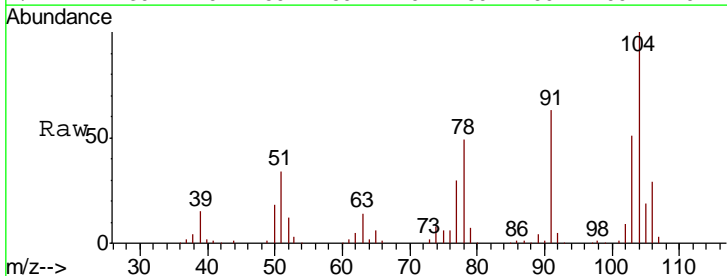
Instrument : MSVOA_U
 ClientSampled : VSTD00530

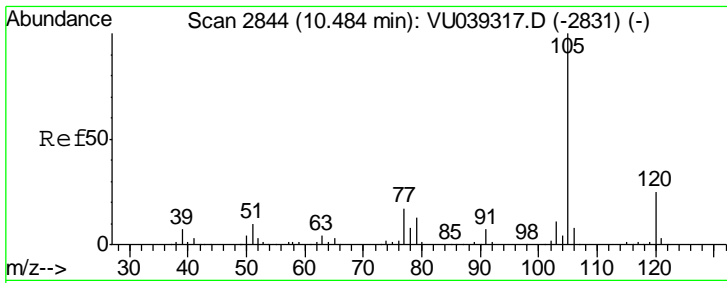
Tgt Ion:106 Resp: 57465
 Ion Ratio Lower Upper
 106 100
 91 214.4 154.6 287.2



#55
 Styrene
 Concen: 4.531 ug/L
 RT: 10.11 min Scan# 2729
 Delta R.T. 0.00 min
 Lab File: VU039339.D
 Acq: 08 Jul 2020 00:56

Tgt Ion:104 Resp: 97375
 Ion Ratio Lower Upper
 104 100
 78 49.2 33.1 61.5

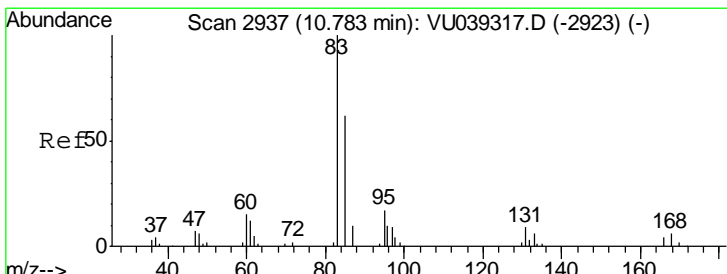
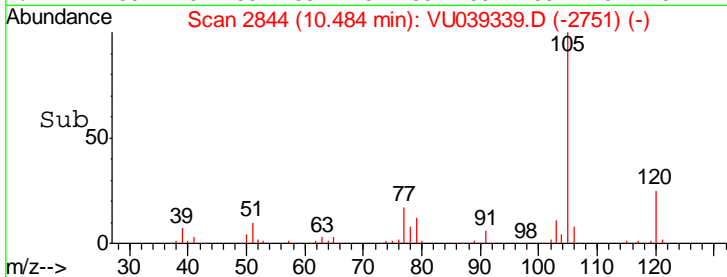
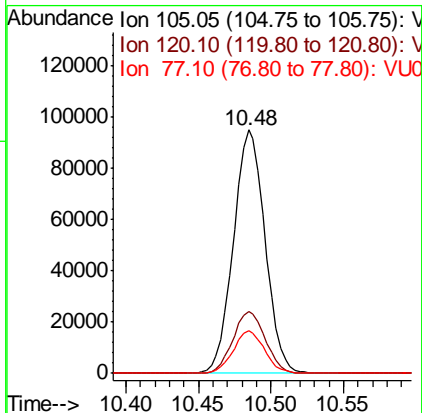
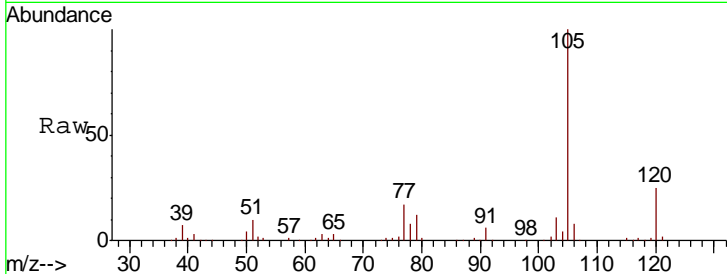




#56
 Isopropylbenzene
 Concen: 4.301 ug/L
 RT: 10.48 min Scan# 2844
 Delta R.T. 0.00 min
 Lab File: VU039339.D
 Acq: 08 Jul 2020 00:56

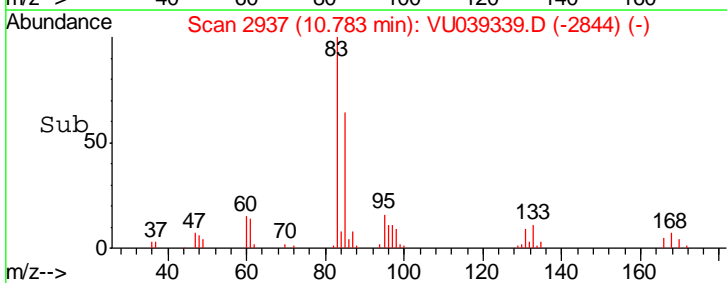
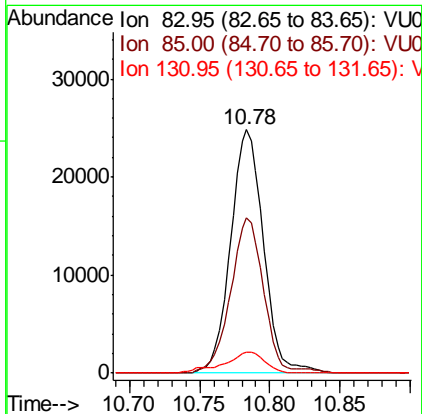
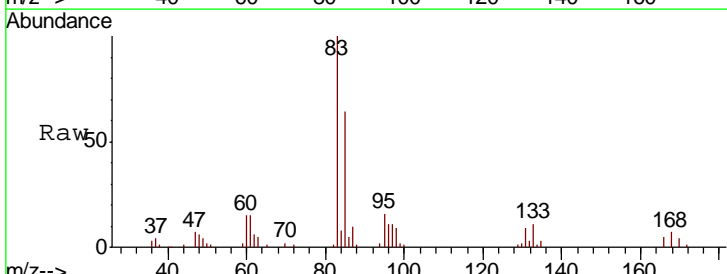
Instrument :
 MSVOA_U
 ClientSampled :
 VSTD00530

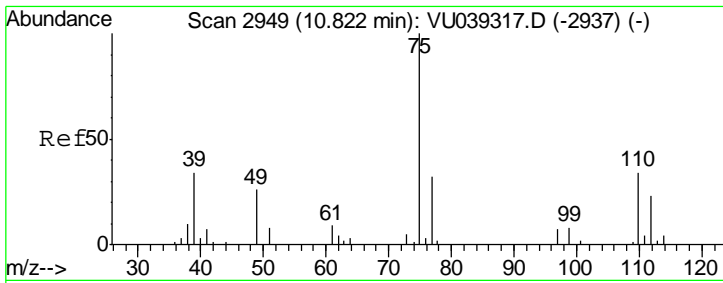
Tgt Ion	Resp	Lower	Upper
105	143646		
120	26.0	20.7	31.1
77	17.2	13.9	20.9



#58
 1,1,2,2-Tetrachloroethane
 Concen: 5.226 ug/L
 RT: 10.78 min Scan# 2937
 Delta R.T. 0.00 min
 Lab File: VU039339.D
 Acq: 08 Jul 2020 00:56

Tgt Ion	Resp	Lower	Upper
83	40523		
85	64.0	46.1	85.7
131	8.6	7.4	11.0

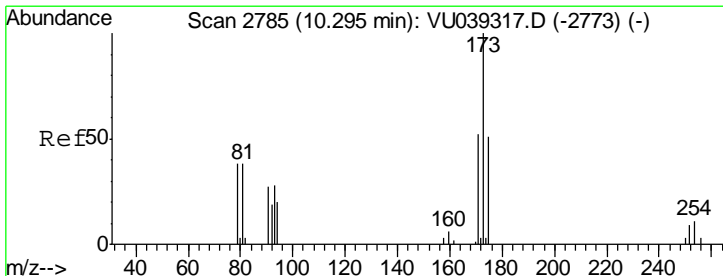
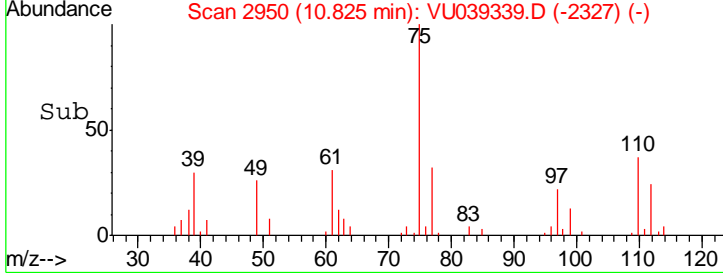
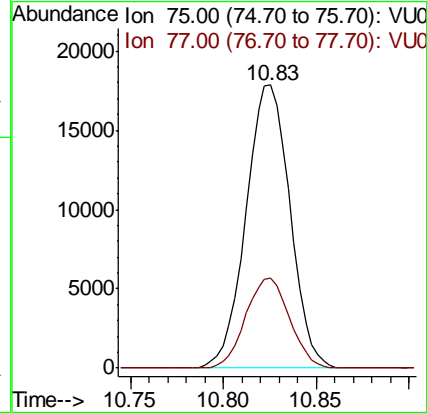
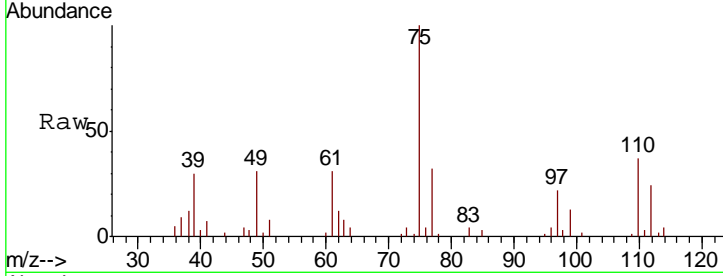




#59
 1,2,3-Trichloropropane
 Concen: 5.167 ug/L
 RT: 10.83 min Scan# 2950
 Delta R.T. 0.00 min
 Lab File: VU039339.D
 Acq: 08 Jul 2020 00:56

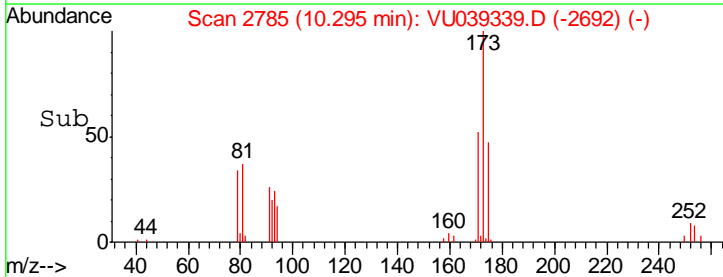
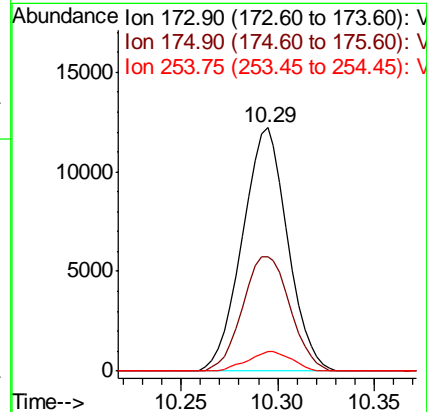
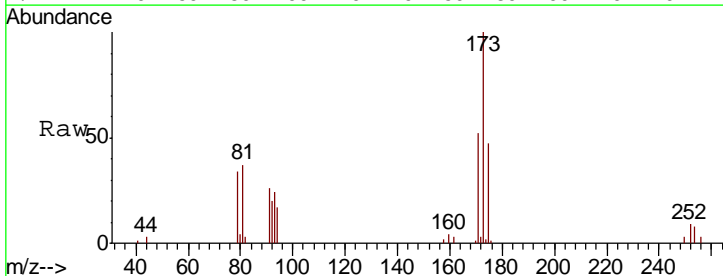
Instrument :
 MSVOA_U
 ClientSampled :
 VSTD00530

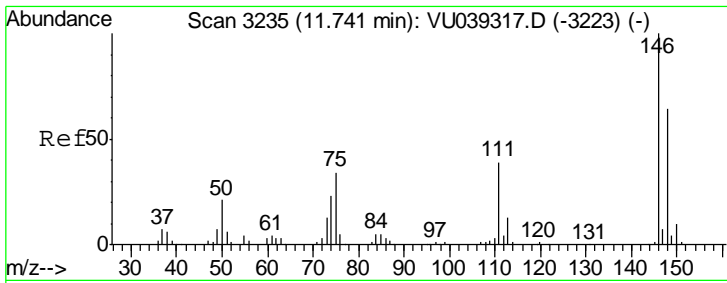
Tgt Ion	Resp	Lower	Upper
75	100		
77	31.5	26.8	40.2



#61
 Bromoform
 Concen: 5.183 ug/L
 RT: 10.29 min Scan# 2785
 Delta R.T. 0.00 min
 Lab File: VU039339.D
 Acq: 08 Jul 2020 00:56

Tgt Ion	Resp	Lower	Upper
173	100		
175	49.5	37.5	56.3
254	7.8	6.7	10.1

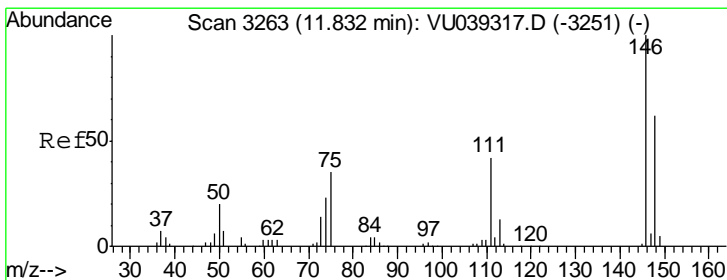
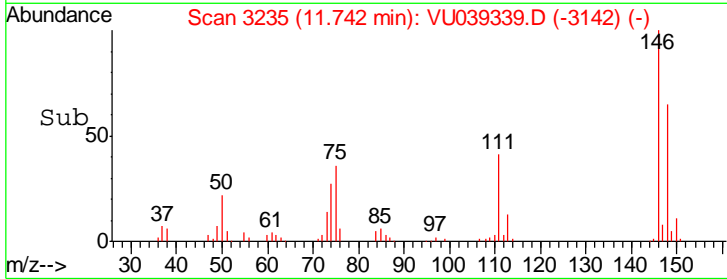
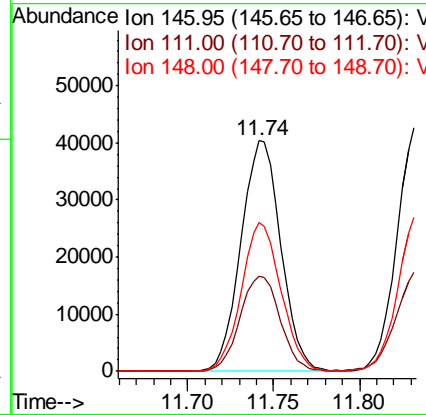
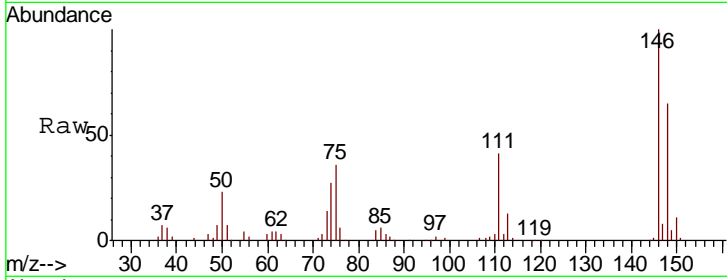




#62
 1,3-Dichlorobenzene
 Concen: 4.587 ug/L
 RT: 11.74 min Scan# 3235
 Delta R.T. 0.00 min
 Lab File: VU039339.D
 Acq: 08 Jul 2020 00:56

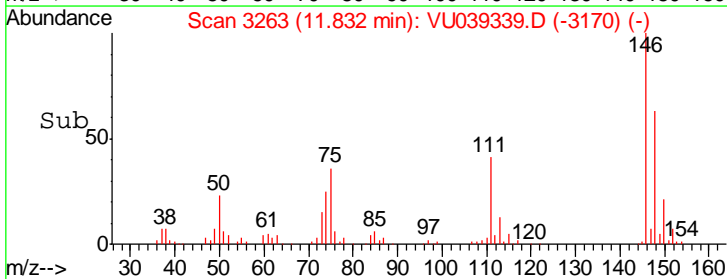
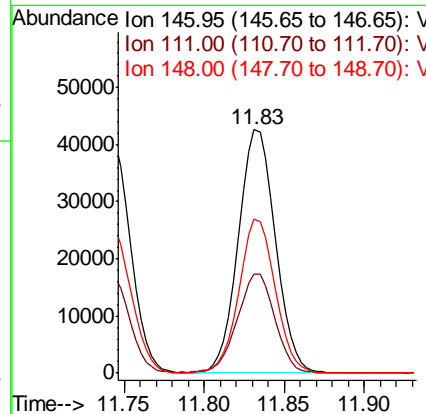
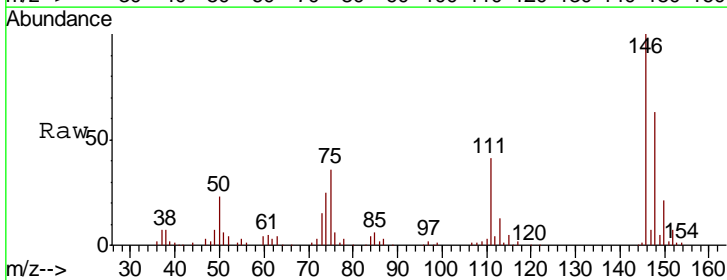
Instrument :
 MSVOA_U
 ClientSampled :
 VSTD00530

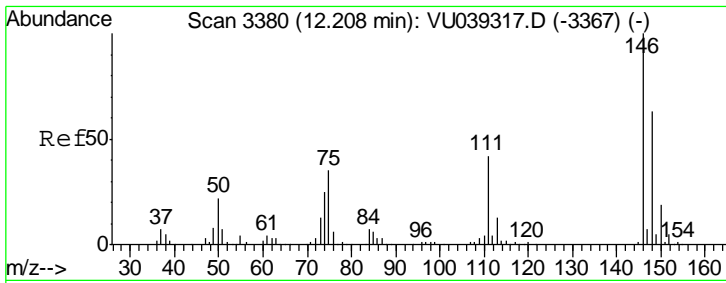
Tgt Ion	Resp	Lower	Upper
146	65234		
111	41.3	29.0	53.8
148	64.8	43.5	80.9



#63
 1,4-Dichlorobenzene
 Concen: 4.709 ug/L
 RT: 11.83 min Scan# 3263
 Delta R.T. 0.00 min
 Lab File: VU039339.D
 Acq: 08 Jul 2020 00:56

Tgt Ion	Resp	Lower	Upper
146	67187		
111	40.8	28.6	53.0
148	63.1	45.0	83.6

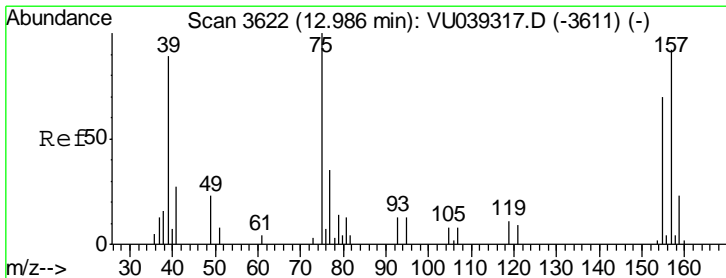
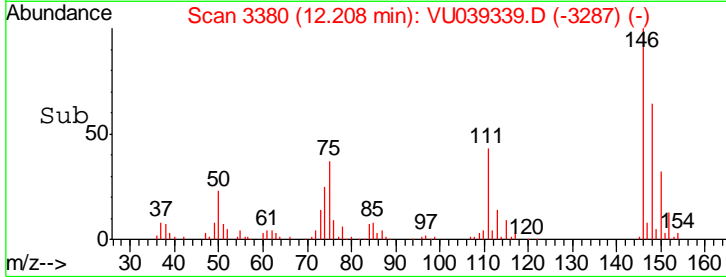
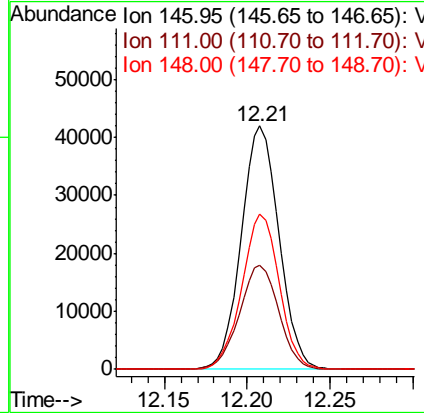
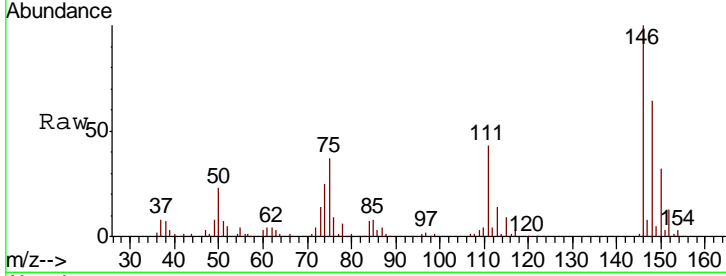




#65
 1,2-Dichlorobenzene
 Concen: 4.651 ug/L
 RT: 12.21 min Scan# 3380
 Delta R.T. 0.00 min
 Lab File: VU039339.D
 Acq: 08 Jul 2020 00:56

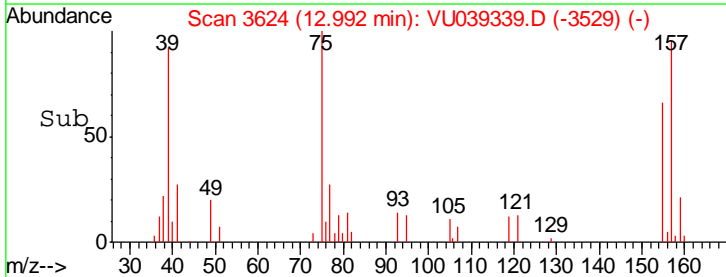
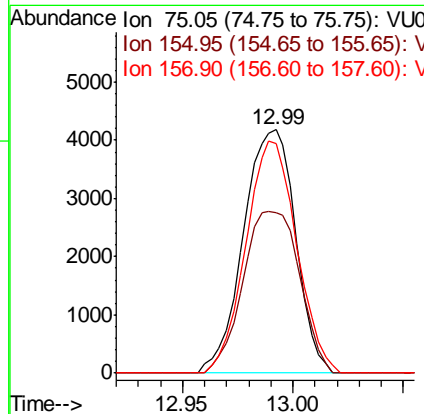
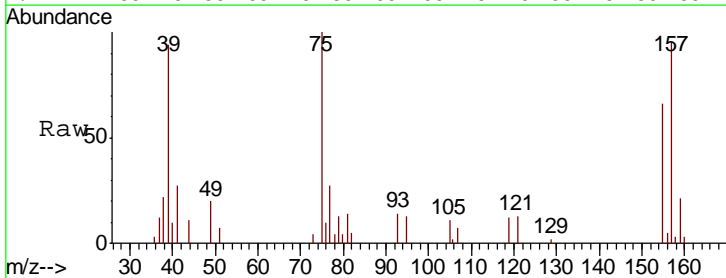
Instrument :
 MSVOA_U
 ClientSampled :
 VSTD00530

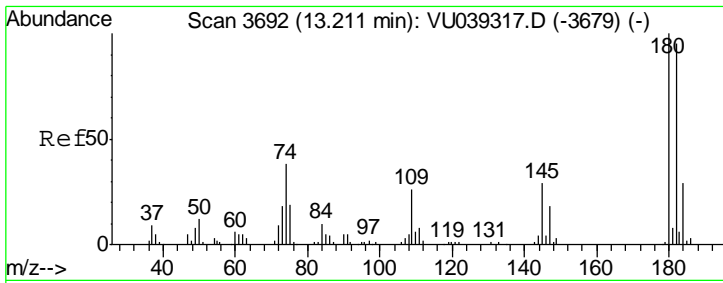
Tgt Ion	Resp	Lower	Upper
146	66301		
111	42.5	35.0	52.4
148	63.7	50.6	75.8



#66
 1,2-Dibromo-3-chloropropane
 Concen: 5.440 ug/L
 RT: 12.99 min Scan# 3624
 Delta R.T. 0.01 min
 Lab File: VU039339.D
 Acq: 08 Jul 2020 00:56

Tgt Ion	Resp	Lower	Upper
75	6851		
155	65.8	51.9	77.9
157	94.5	63.2	94.8

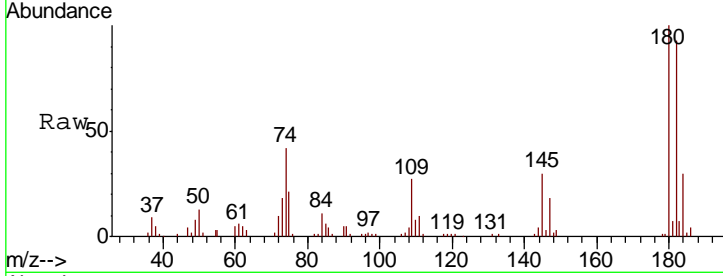




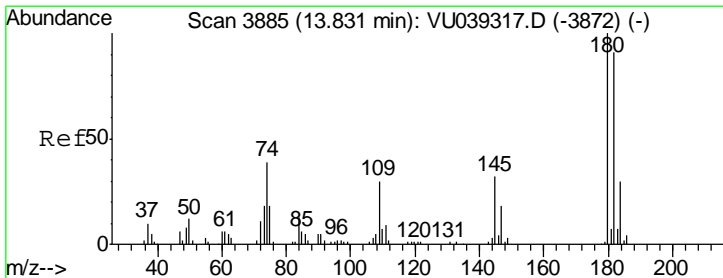
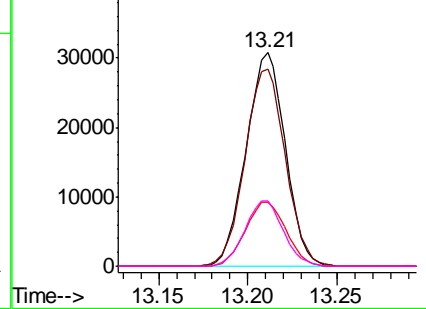
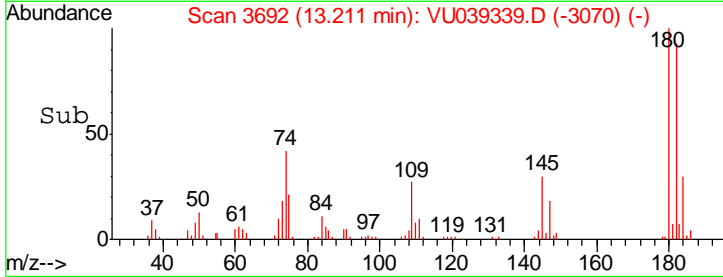
#67
 1,3,5-Trichlorobenzene
 Concen: 4.460 ug/L
 RT: 13.21 min Scan# 3692
 Delta R.T. 0.00 min
 Lab File: VU039339.D
 Acq: 08 Jul 2020 00:56

Instrument : MSVOA_U
 ClientSampleId : VSTD00530

Tgt Ion	Resp	Lower	Upper
180	100		
182	94.8	76.2	114.4
184	31.1	24.2	36.4
145	30.0	24.2	36.2

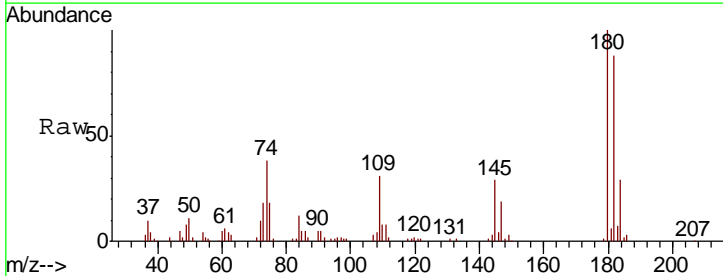


Abundance Ion 180.00 (179.70 to 180.70): V
 Ion 182.00 (181.70 to 182.70): V
 Ion 184.00 (183.70 to 184.70): V
 Ion 145.00 (144.70 to 145.70): V

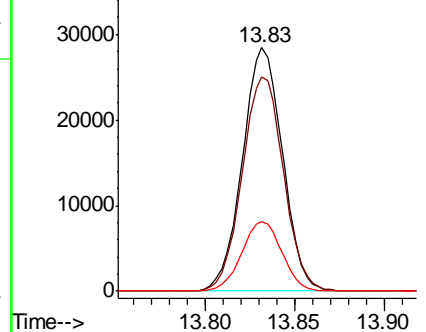
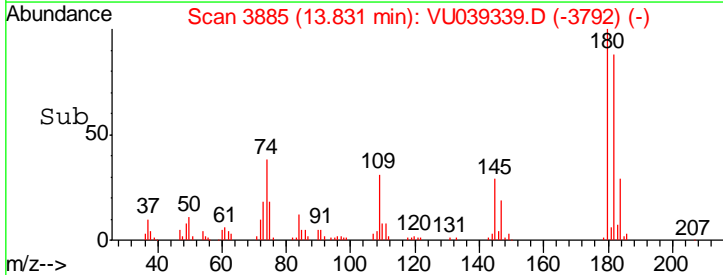


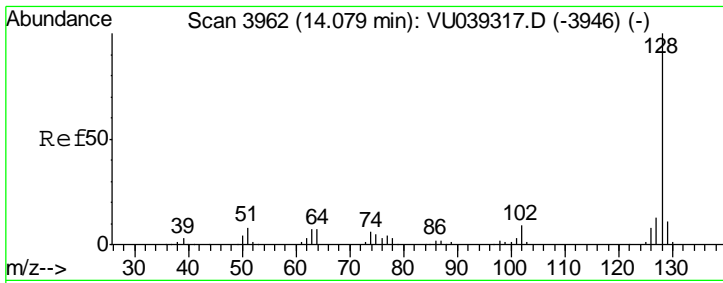
#68
 1,2,4-trichlorobenzene
 Concen: 4.923 ug/L
 RT: 13.83 min Scan# 3885
 Delta R.T. 0.00 min
 Lab File: VU039339.D
 Acq: 08 Jul 2020 00:56

Tgt Ion	Resp	Lower	Upper
180	100		
182	90.4	79.4	119.2
145	28.5	26.4	39.6



Abundance Ion 179.90 (179.60 to 180.60): V
 Ion 182.00 (181.70 to 182.70): V
 Ion 144.95 (144.65 to 145.65): V

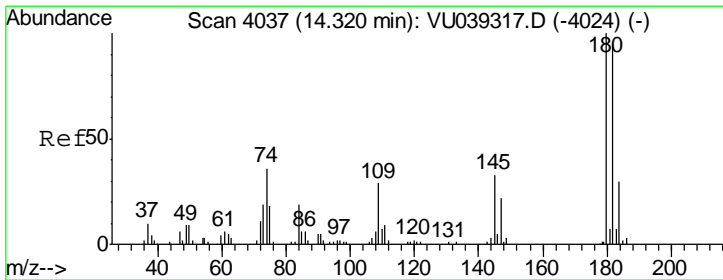
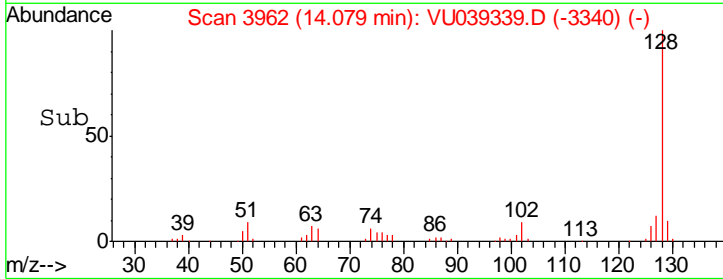
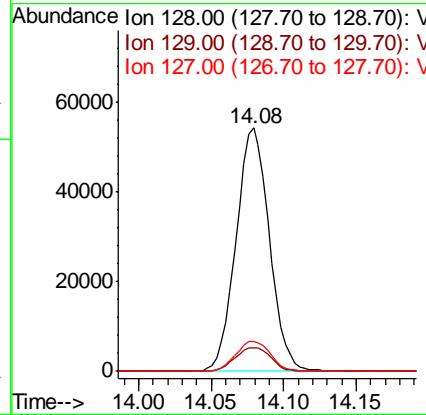
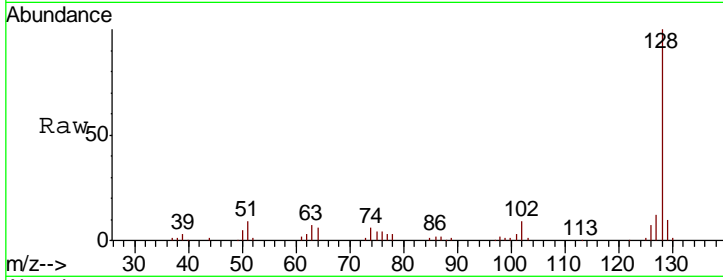




#69
 Naphthalene
 Concen: 4.718 ug/L
 RT: 14.08 min Scan# 3962
 Delta R.T. 0.00 min
 Lab File: VU039339.D
 Acq: 08 Jul 2020 00:56

Instrument :
 MSVOA_U
 ClientSampled :
 VSTD00530

Tgt Ion	Resp	Lower	Upper
128	100		
129	10.5	8.6	13.0
127	12.8	10.4	15.6



#70
 1,2,3-Trichlorobenzene
 Concen: 4.822 ug/L
 RT: 14.32 min Scan# 4038
 Delta R.T. 0.00 min
 Lab File: VU039339.D
 Acq: 08 Jul 2020 00:56

Tgt Ion	Resp	Lower	Upper
180	100		
182	94.8	74.2	111.2
145	33.0	27.6	41.4

