

Data File : VU033660.D
 Acq On : 08 Aug 2019 23:56
 Operator : JC/SP
 Sample : K4161-12
 Misc : 5.0mL/MSVOA_U/WATER
 ALS Vial : 36 Sample Multiplier: 1

Instrument :
 MSVOA_U
 ClientSampled :
 ETOE6

Quant Time: Aug 09 07:46:05 2019
 Quant Method : Z:\VOASRV\HPCHEM1\MSVOA_U\METHOD\SOMULM080819WMA.M
 Quant Title : VOC Analysis
 QLast Update : Fri Aug 09 07:39:51 2019
 Response via : Initial Calibration

| Internal Standards | R.T. | QIon | Response | Conc | Units | Dev(Min) |
|----------------------------|-------|------|----------|-------|-------|----------|
| 1) 1,4-Difluorobenzene | 5.86 | 114 | 296863 | 50.00 | ug/L | 0.00 |
| 28) Chlorobenzene-d5 | 9.07 | 117 | 302237 | 50.00 | ug/L | 0.00 |
| 60) 1,4-Dichlorobenzene-d4 | 11.47 | 152 | 144074 | 50.00 | ug/L | 0.00 |

System Monitoring Compounds

| | | | | | | |
|--------------------------------|---------|-------|----------|----------|------|---------|
| 4) Vinyl Chloride-d3 | 1.39 | 65 | 138337 | 41.28 | ug/L | 0.00 |
| Spiked Amount | 50.000 | Range | 60 - 135 | Recovery | = | 82.56% |
| 7) Chloroethane-d5 | 1.67 | 69 | 116519 | 41.08 | ug/L | 0.00 |
| Spiked Amount | 50.000 | Range | 70 - 130 | Recovery | = | 82.16% |
| 11) 1,1-Dichloroethene-d2 | 2.26 | 63 | 190823 | 35.22 | ug/L | 0.00 |
| Spiked Amount | 50.000 | Range | 60 - 125 | Recovery | = | 70.44% |
| 21) 2-Butanone-d5 | 4.15 | 46 | 195794 | 79.78 | ug/L | 0.00 |
| Spiked Amount | 100.000 | Range | 40 - 130 | Recovery | = | 79.78% |
| 24) Chloroform-d | 4.62 | 84 | 216951 | 39.07 | ug/L | 0.00 |
| Spiked Amount | 50.000 | Range | 70 - 125 | Recovery | = | 78.14% |
| 26) 1,2-Dichloroethane-d4 | 5.29 | 65 | 148601 | 41.49 | ug/L | 0.00 |
| Spiked Amount | 50.000 | Range | 70 - 125 | Recovery | = | 82.98% |
| 32) Benzene-d6 | 5.32 | 84 | 456027 | 40.46 | ug/L | 0.00 |
| Spiked Amount | 50.000 | Range | 70 - 125 | Recovery | = | 80.92% |
| 36) 1,2-Dichloropropane-d6 | 6.31 | 67 | 147447 | 41.14 | ug/L | 0.00 |
| Spiked Amount | 50.000 | Range | 70 - 120 | Recovery | = | 82.28% |
| 41) Toluene-d8 | 7.55 | 98 | 413160 | 39.65 | ug/L | 0.00 |
| Spiked Amount | 50.000 | Range | 80 - 120 | Recovery | = | 79.30%# |
| 43) trans-1,3-Dichloropropene- | 7.83 | 79 | 65638 | 37.42 | ug/L | 0.00 |
| Spiked Amount | 50.000 | Range | 60 - 125 | Recovery | = | 74.84% |
| 47) 2-Hexanone-d5 | 8.29 | 63 | 137086 | 76.41 | ug/L | 0.00 |
| Spiked Amount | 100.000 | Range | 45 - 130 | Recovery | = | 76.41% |
| 57) 1,1,2,2-Tetrachloroethane- | 10.41 | 84 | 219184 | 39.10 | ug/L | 0.00 |
| Spiked Amount | 50.000 | Range | 65 - 120 | Recovery | = | 78.20% |
| 64) 1,2-Dichlorobenzene-d4 | 11.85 | 152 | 162542 | 41.29 | ug/L | 0.00 |
| Spiked Amount | 50.000 | Range | 80 - 120 | Recovery | = | 82.58% |

Target Compounds

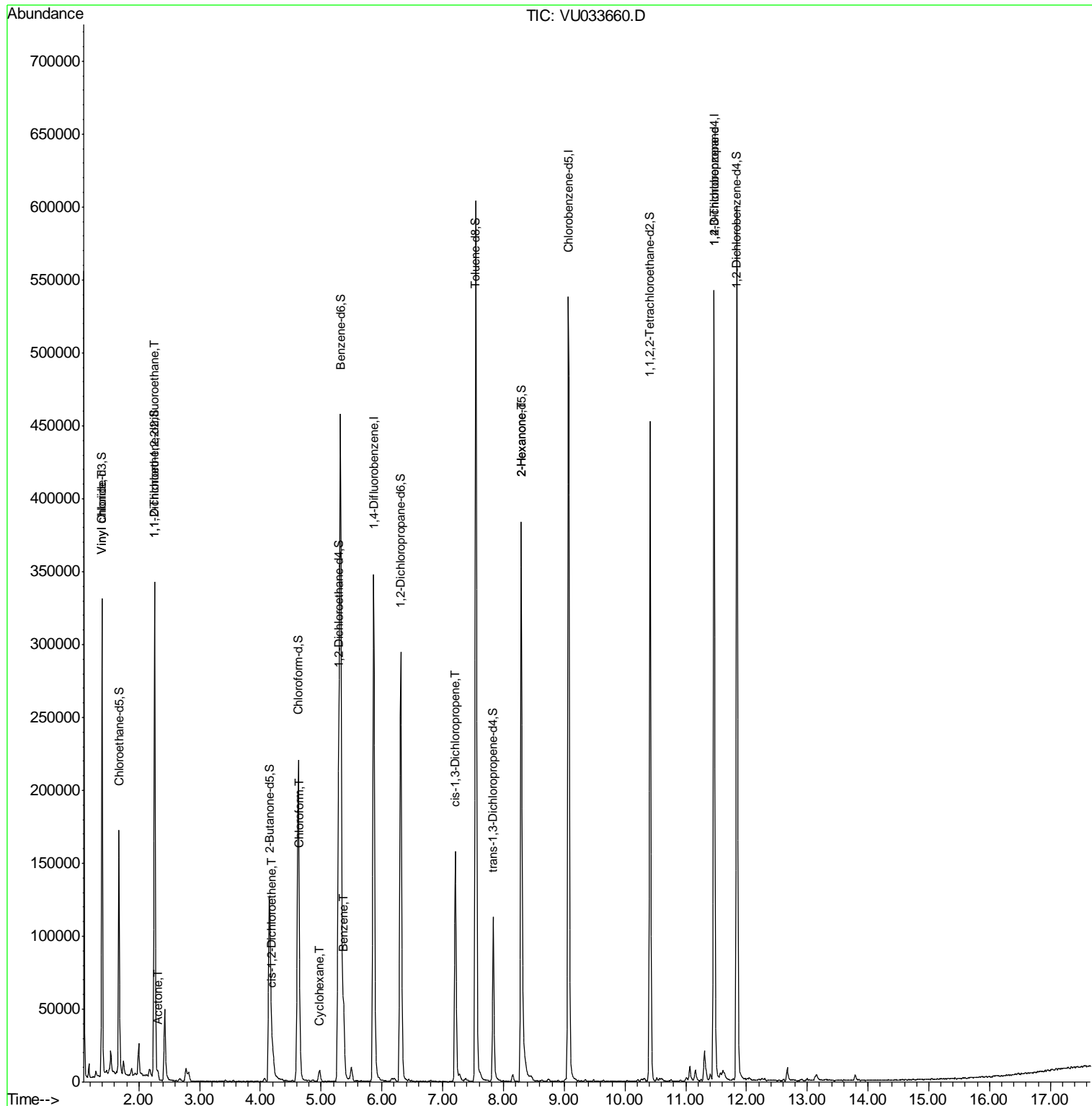
| | | | | | | Qvalue |
|--------------------------------|-------|-----|-------|--------|--------|--------|
| 5) Vinyl chloride | 1.40 | 62 | 82562 | 25.623 | ug/L | 99 |
| 10) 1,1,2-Trichloro-1,2,2-trif | 2.26 | 101 | 1757 | 0.799 | ug/L # | 19 |
| 13) Acetone | 2.31 | 43 | 4741 | 2.840 | ug/L | 88 |
| 20) cis-1,2-Dichloroethene | 4.20 | 96 | 7502 | 3.045 | ug/L | 90 |
| 25) Chloroform | 4.65 | 83 | 7828 | 1.751 | ug/L | 95 |
| 29) Cyclohexane | 4.97 | 56 | 3868 | 1.108 | ug/L # | 60 |
| 33) Benzene | 5.37 | 78 | 52621 | 5.515 | ug/L | 100 |
| 39) cis-1,3-Dichloropropene | 7.21 | 75 | 3855 | 1.004 | ug/L # | 50 |
| 48) 2-Hexanone | 8.30 | 43 | 15727 | 5.099 | ug/L # | 71 |
| 59) 1,2,3-Trichloropropane | 11.47 | 75 | 17453 | 4.957 | ug/L | 89 |

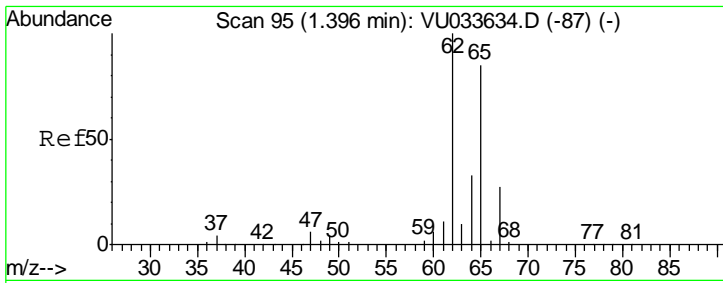
(#) = qualifier out of range (m) = manual integration (+) = signals summed

Data File : VU033660.D
Acq On : 08 Aug 2019 23:56
Operator : JC/SP
Sample : K4161-12
Misc : 5.0mL/MSVOA_U/WATER
ALS Vial : 36 Sample Multiplier: 1

Instrument :
MSVOA_U
ClientSampled :
ETOE6

Quant Time: Aug 09 07:46:05 2019
Quant Method : Z:\VOASRV\HPCHEM1\MSVOA_U\METHOD\SOMULM080819WMA.M
Quant Title : VOC Analysis
QLast Update : Fri Aug 09 07:39:51 2019
Response via : Initial Calibration



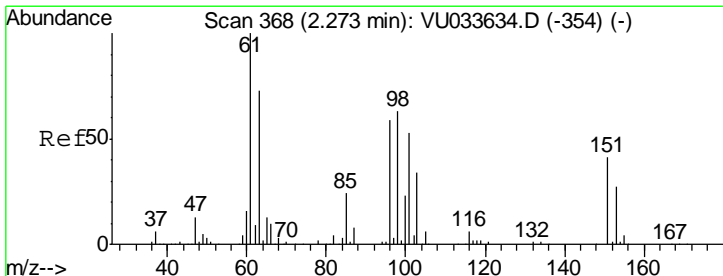
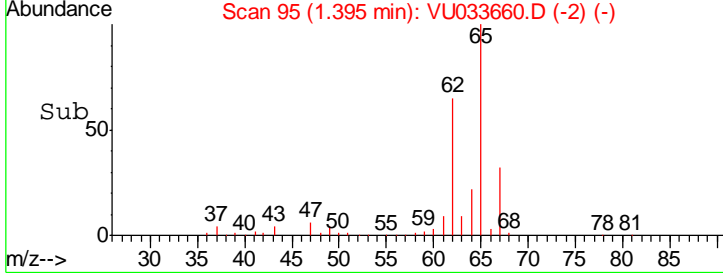
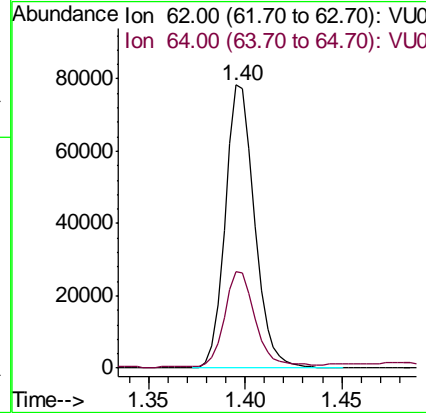
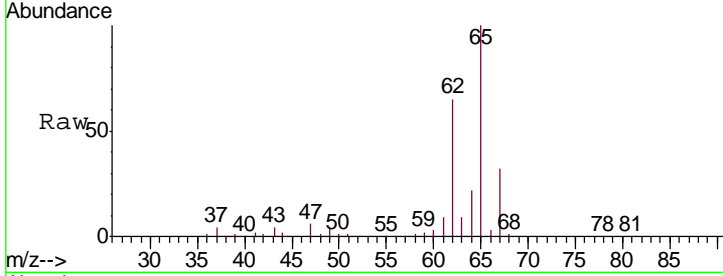


#5
 Vinyl chloride
 Concen: 25.623 ug/L
 RT: 1.40 min Scan# 95
 Delta R.T. -0.00 min
 Lab File: VU033660.D
 Acq: 08 Aug 2019 23:56

Instrument :
 MSVOA_U
 ClientSampled :
 ETOE6

Tgt Ion: 62 Resp: 82562

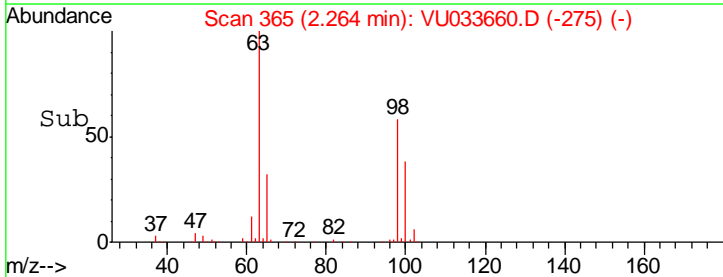
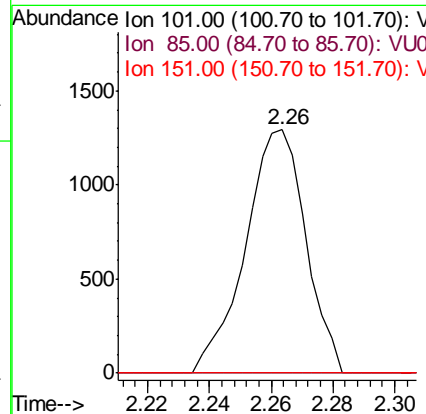
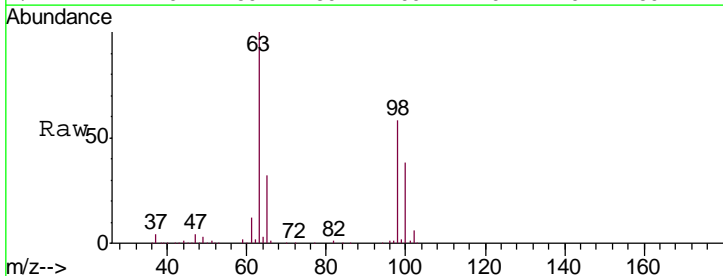
| Ion | Ratio | Lower | Upper |
|-----|-------|-------|-------|
| 62 | 100 | | |
| 64 | 34.3 | 23.6 | 43.8 |

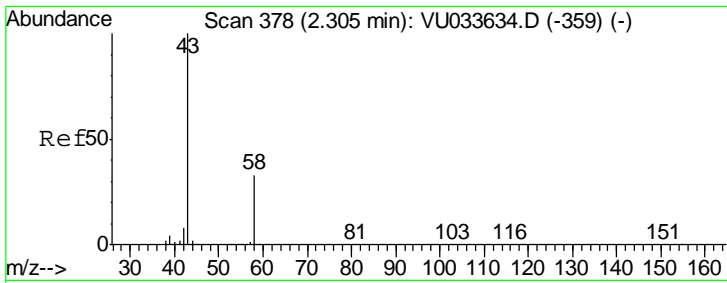


#10
 1,1,2-Trichloro-1,2,2-trifluoroethane
 Concen: 0.799 ug/L
 RT: 2.26 min Scan# 365
 Delta R.T. -0.01 min
 Lab File: VU033660.D
 Acq: 08 Aug 2019 23:56

Tgt Ion: 101 Resp: 1757

| Ion | Ratio | Lower | Upper |
|-----|-------|-------|-------|
| 101 | 100 | | |
| 85 | 0.0 | 34.8 | 52.2# |
| 151 | 0.0 | 60.4 | 90.6# |

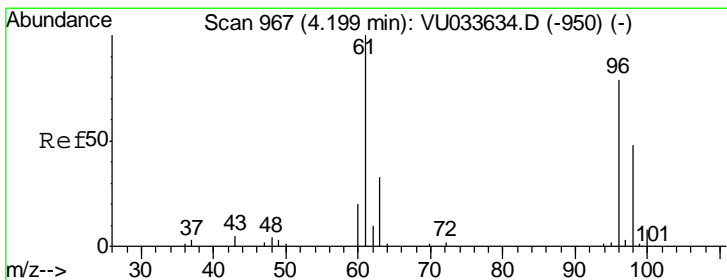
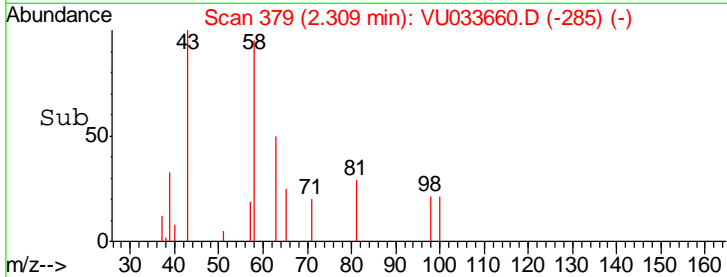
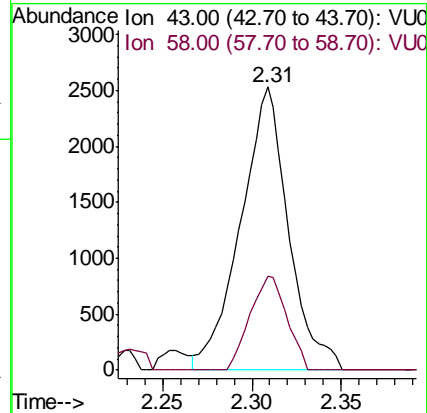
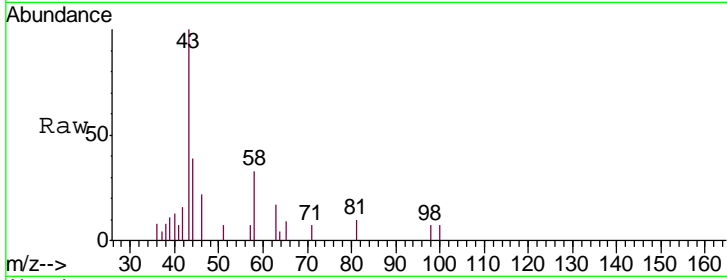




#13
 Acetone
 Concen: 2.840 ug/L
 RT: 2.31 min Scan# 379
 Delta R.T. 0.00 min
 Lab File: VU033660.D
 Acq: 08 Aug 2019 23:56

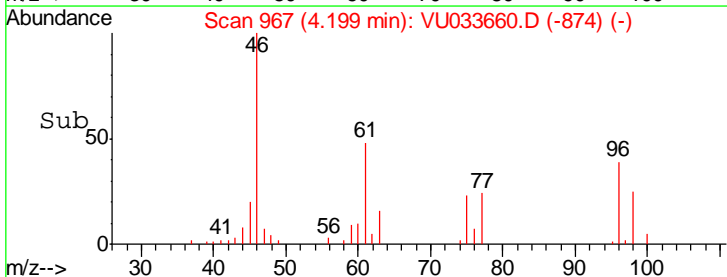
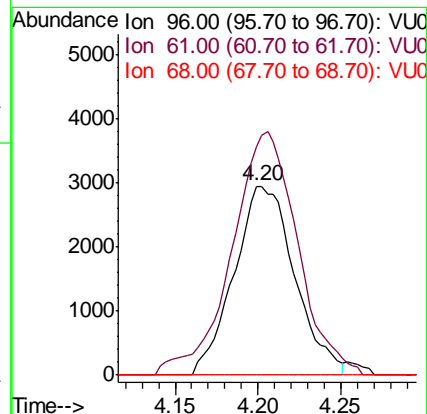
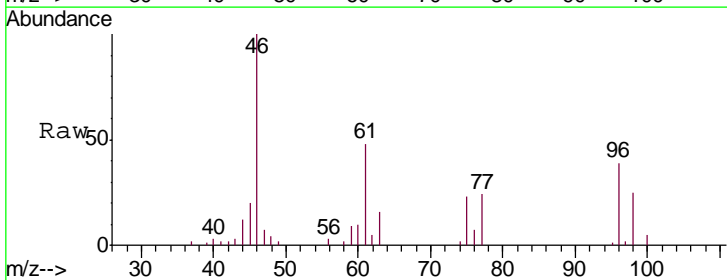
Instrument :
 MSVOA_U
 ClientSampled :
 ETOE6

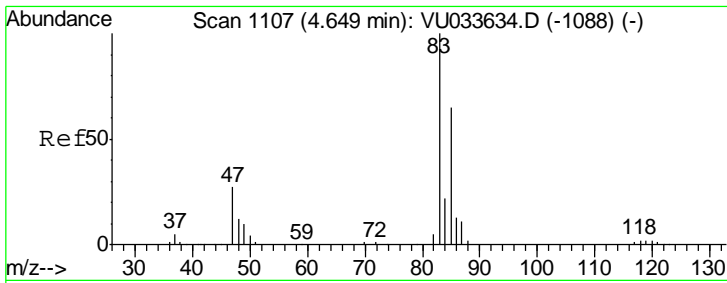
| Tgt Ion | Resp | Lower | Upper |
|---------|------|-------|-------|
| 43 | 100 | | |
| 58 | 25.6 | 0.0 | 65.0 |



#20
 cis-1,2-Dichloroethene
 Concen: 3.045 ug/L
 RT: 4.20 min Scan# 967
 Delta R.T. -0.00 min
 Lab File: VU033660.D
 Acq: 08 Aug 2019 23:56

| Tgt Ion | Resp | Lower | Upper |
|---------|-------|-------|-------|
| 96 | 100 | | |
| 61 | 120.9 | 93.0 | 172.8 |
| 68 | 0.0 | 0.0 | 0.0 |

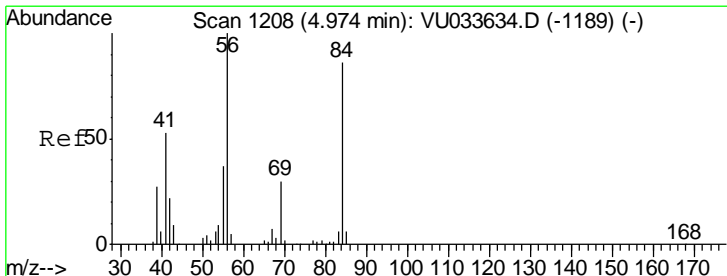
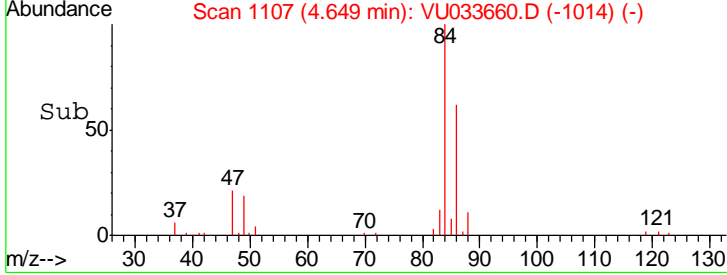
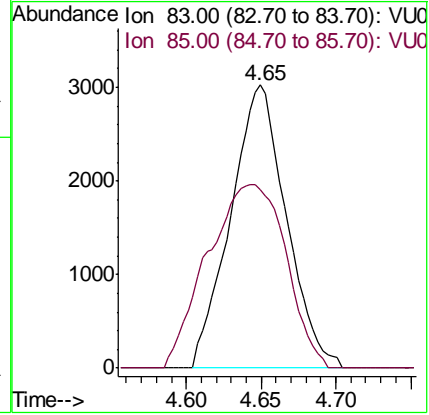
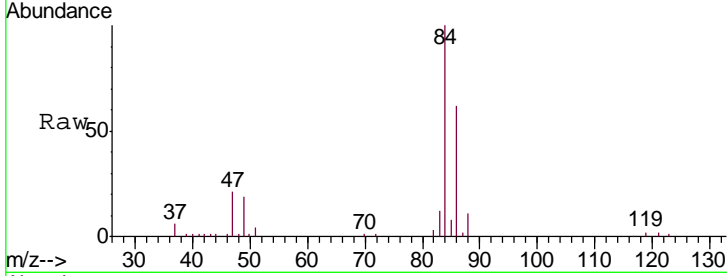




#25
 Chloroform
 Concen: 1.751 ug/L
 RT: 4.65 min Scan# 1107
 Delta R.T. -0.00 min
 Lab File: VU033660.D
 Acq: 08 Aug 2019 23:56

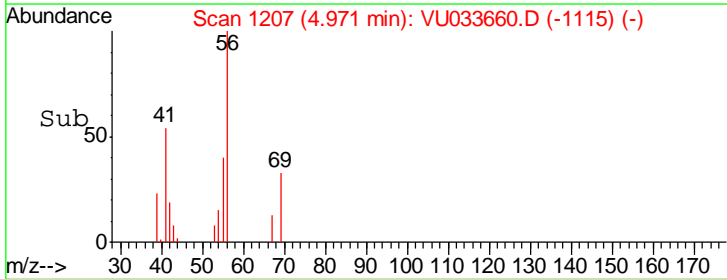
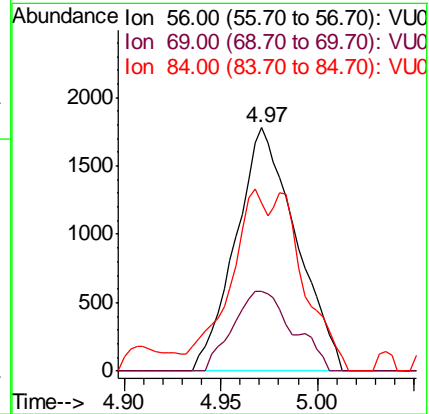
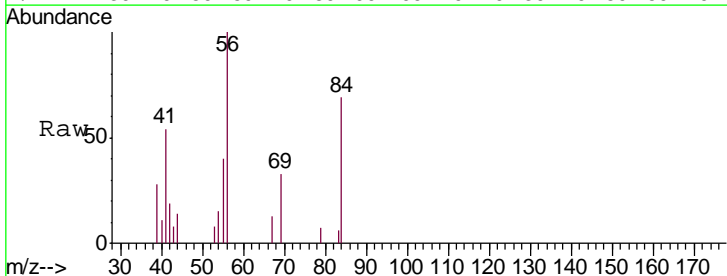
Instrument :
 MSVOA_U
ClientSampled :
 ETOE6

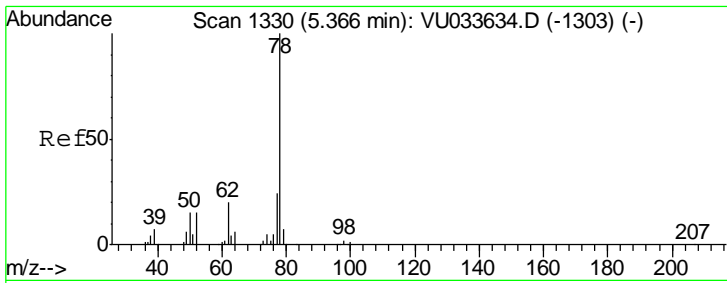
Tgt Ion: 83 Resp: 7828
 Ion Ratio Lower Upper
 83 100
 85 63.1 47.2 87.6



#29
 Cyclohexane
 Concen: 1.108 ug/L
 RT: 4.97 min Scan# 1207
 Delta R.T. -0.00 min
 Lab File: VU033660.D
 Acq: 08 Aug 2019 23:56

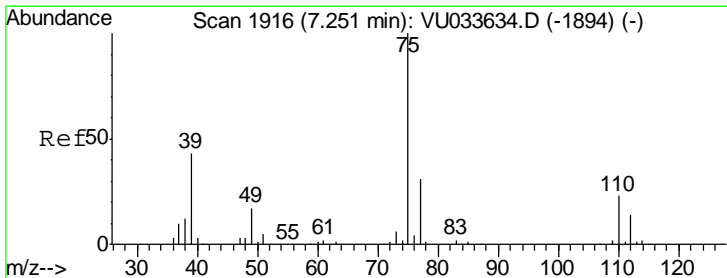
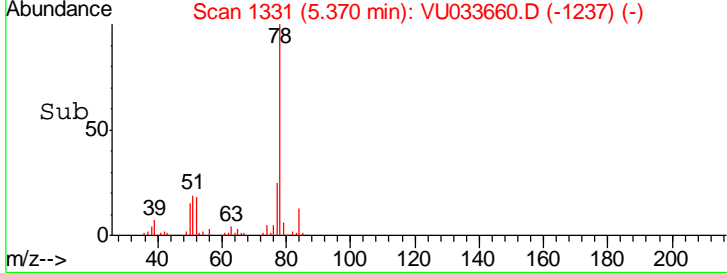
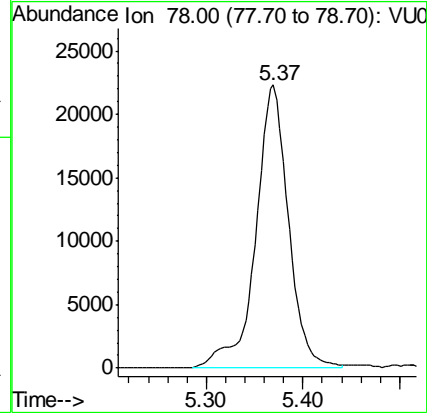
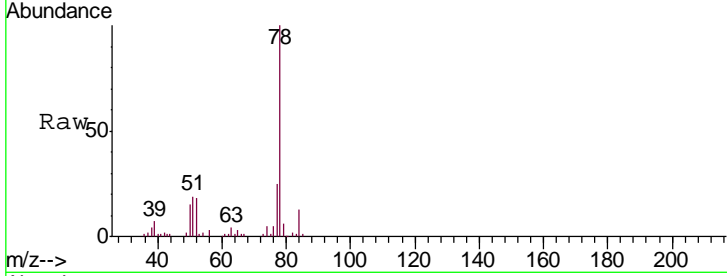
Tgt Ion: 56 Resp: 3868
 Ion Ratio Lower Upper
 56 100
 69 28.6 25.2 37.8
 84 38.4 70.2 105.2#



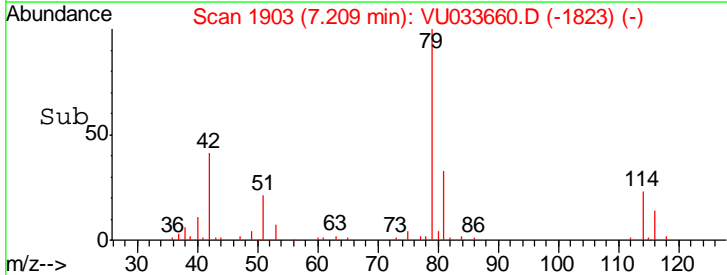
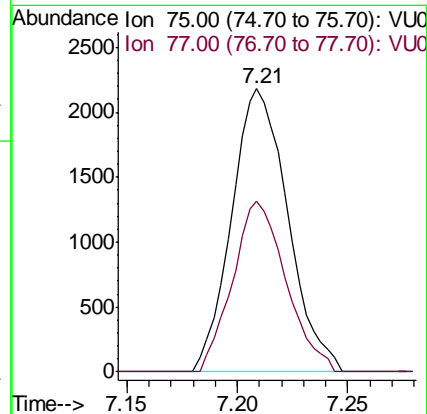
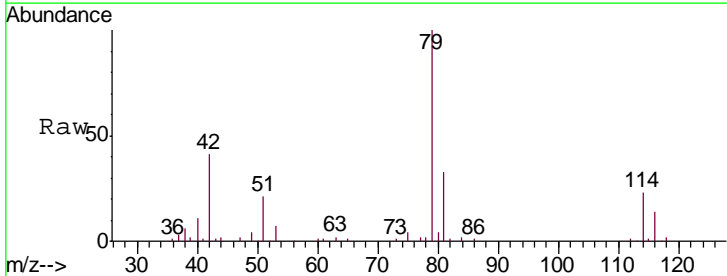


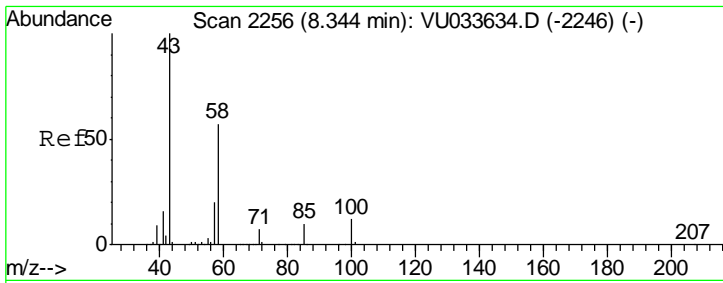
#33
Benzene
Concen: 5.515 ug/L
RT: 5.37 min Scan# 1331
Delta R.T. 0.00 min
Lab File: VU033660.D
Acq: 08 Aug 2019 23:56
Tgt Ion: 78 Resp: 52621

Instrument : MSVOA_U
ClientSampled : ETOE6



#39
cis-1,3-Dichloropropene
Concen: 1.004 ug/L
RT: 7.21 min Scan# 1903
Delta R.T. -0.04 min
Lab File: VU033660.D
Acq: 08 Aug 2019 23:56
Tgt Ion: 75 Resp: 3855
Ion Ratio Lower Upper
75 100
77 60.2 22.5 41.9#

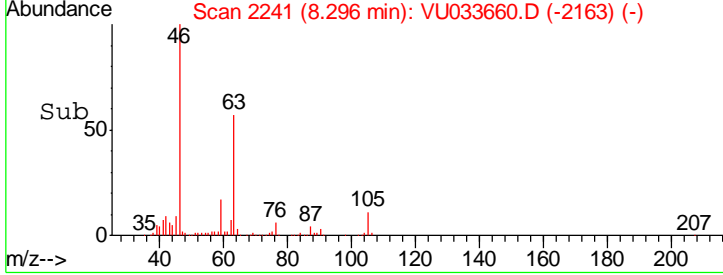
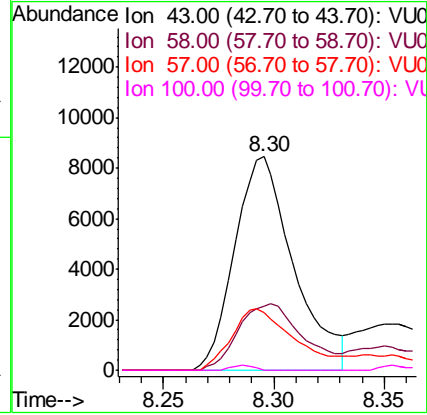
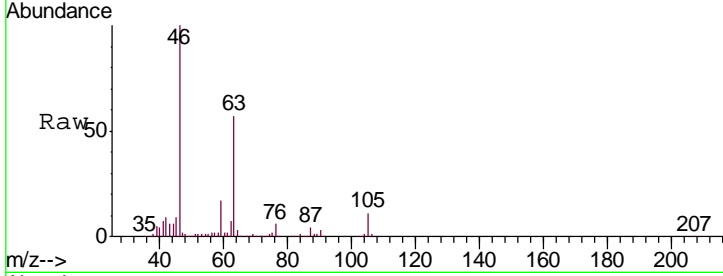




#48
 2-Hexanone
 Concen: 5.099 ug/L
 RT: 8.30 min Scan# 2241
 Delta R.T. -0.05 min
 Lab File: VU033660.D
 Acq: 08 Aug 2019 23:56

Instrument : MSVOA_U
 ClientSampled : ETOE6

| Tgt Ion | Resp | Lower | Upper |
|---------|-------|-------|-------|
| 43 | 15727 | | |
| 58 | 33.7 | 44.8 | 67.2# |
| 57 | 31.4 | 15.5 | 23.3# |
| 100 | 1.0 | 9.4 | 14.2# |



#59
 1,2,3-Trichloropropane
 Concen: 4.957 ug/L
 RT: 11.47 min Scan# 3227
 Delta R.T. 0.99 min
 Lab File: VU033660.D
 Acq: 08 Aug 2019 23:56

| Tgt Ion | Resp | Lower | Upper |
|---------|-------|-------|-------|
| 75 | 17453 | | |
| 77 | 37.8 | 25.5 | 38.3 |

