

Data Path : Z:\voasrv\HPCHEM1\MSVOA_U\Data\VU081522\
 Data File : VU050337.D
 Acq On : 15 Aug 2022 13:33
 Operator : SY/MD
 Sample : N4115-18
 Misc : 25.0mL/MSVOA_U/WATER
 ALS Vial : 8 Sample Multiplier: 1

Instrument :
 MSVOA_U
 ClientSampleId :
 F5E02

Integration Parameters: rteint.p

Integrator: RTE
 Smoothing : ON Filtering: 5
 Sampling : 1 Min Area: 3 % of largest Peak
 Start Thrs: 0.1 Max Peaks: 100
 Stop Thrs : 0 Peak Location: TOP

If leading or trailing edge < 100 prefer < Baseline drop else tangent >
 Peak separation: 5

Method : Z:\voasrv\HPCHEM1\MSVOA_U\Method\SFAMUTR080422WMA.M
 Title : TRACE VOA SFAM1.0

Signal : TIC: VU050337.D\data.ms

peak #	R.T. min	first scan	max scan	last scan	PK TY	peak height	corr. area	corr. % max.	% of total
1	1.481	38	44	51	rBV	11186	11251	2.61%	0.366%
2	1.584	68	76	78	rBV	67296	68228	15.85%	2.222%
3	1.909	169	177	194	rVB	37059	48924	11.36%	1.593%
4	2.231	268	277	291	rVB	13926	25810	5.99%	0.841%
5	2.375	293	322	336	rBV2	18994	61147	14.20%	1.992%
6	2.565	370	381	397	rVB	61518	103100	23.95%	3.358%
7	3.353	617	626	641	rVB3	2491	4584	1.06%	0.149%
8	3.829	755	774	775	rBV	3371	6256	1.45%	0.204%
9	4.629	1009	1023	1074	rBV2	61318	220424	51.19%	7.179%
10	5.063	1143	1158	1176	rBV2	74987	169566	39.38%	5.523%
11	5.726	1336	1364	1377	rBV2	122822	329847	76.61%	10.743%
12	6.250	1513	1527	1551	rBV	111359	212166	49.28%	6.910%
13	6.539	1605	1617	1618	rBV3	4139	5879	1.37%	0.191%
14	6.690	1650	1664	1687	rBV2	81203	159763	37.11%	5.203%
15	7.565	1920	1936	1954	rBV	35681	62631	14.55%	2.040%
16	7.899	2026	2040	2056	rBV	119986	215042	49.94%	7.004%
17	7.970	2056	2062	2078	rVB	8442	14892	3.46%	0.485%
18	8.179	2117	2127	2144	rBV	21659	36192	8.41%	1.179%
19	8.639	2257	2270	2299	rBV4	172814	430565	100.00%	14.024%
20	8.790	2310	2317	2331	rVB4	4451	7920	1.84%	0.258%
21	9.417	2500	2512	2536	rBV	156640	264593	61.45%	8.618%
22	9.571	2551	2560	2567	rBV2	5171	7676	1.78%	0.250%
23	9.693	2588	2598	2612	rVB	16816	26813	6.23%	0.873%
24	10.098	2712	2724	2738	rVB4	5747	9903	2.30%	0.323%
25	10.758	2916	2929	2949	rVB2	74420	120624	28.02%	3.929%
26	10.996	2996	3003	3016	rBV2	2519	4610	1.07%	0.150%
27	11.256	3075	3084	3091	rBV2	4756	6919	1.61%	0.225%
28	11.468	3142	3150	3161	rVB2	4633	6440	1.50%	0.210%
29	11.812	3243	3257	3273	rBV	132574	213199	49.52%	6.944%
30	12.192	3364	3375	3397	rBV	117330	196323	45.60%	6.394%
31	16.886	4828	4835	4845	rVB3	13849	19021	4.42%	0.620%

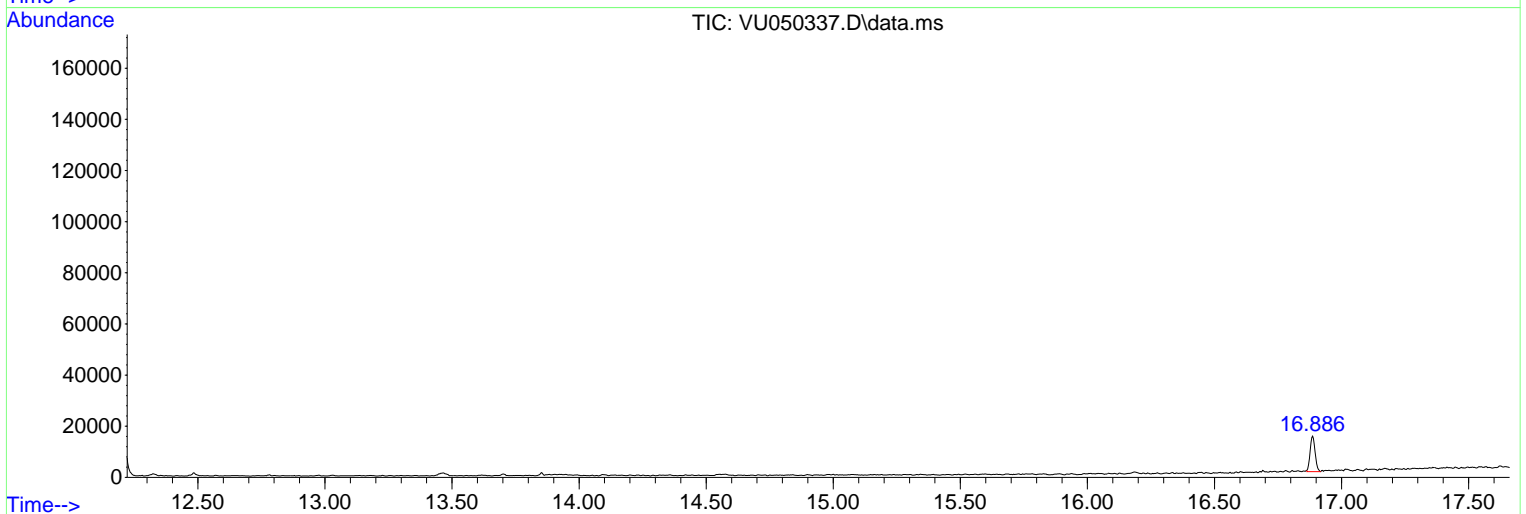
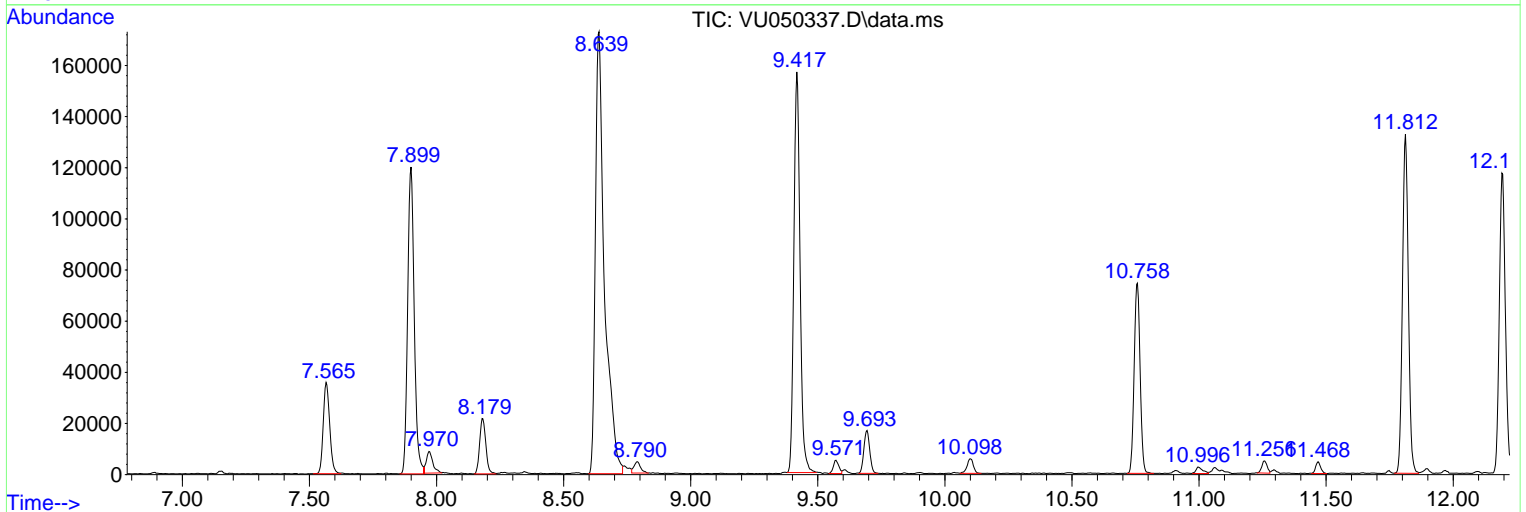
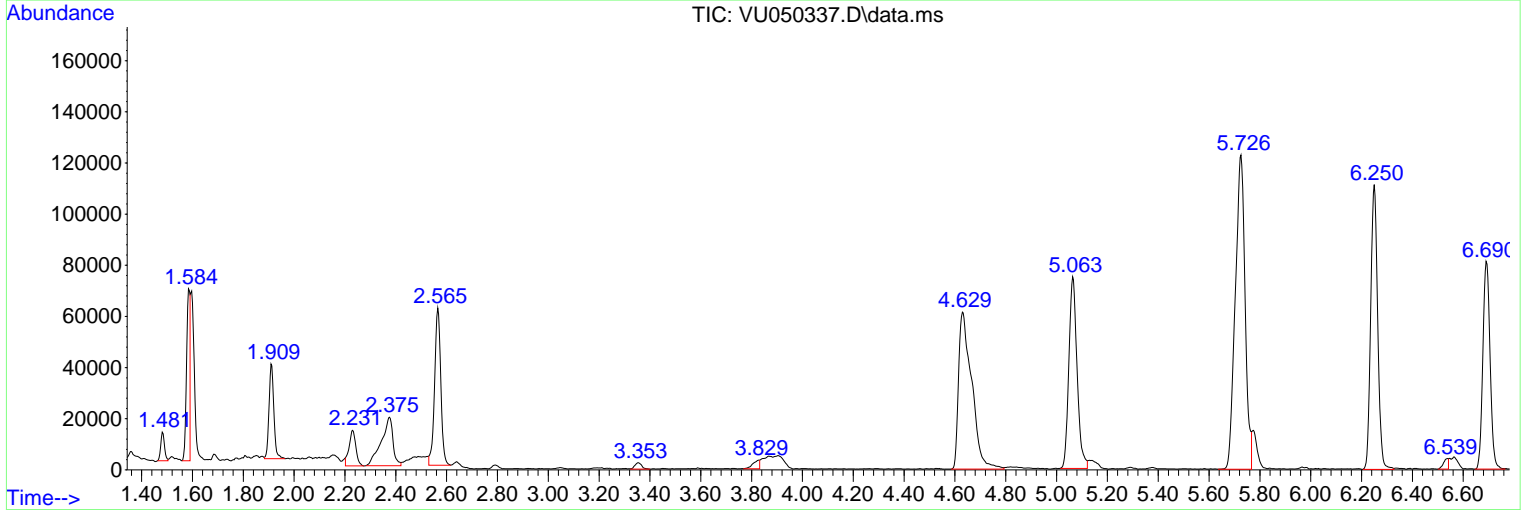
Sum of corrected areas: 3070308

Data Path : Z:\voasrv\HPCHEM1\MSVOA_U\Data\VU081522\
 Data File : VU050337.D
 Acq On : 15 Aug 2022 13:33
 Operator : SY/MD
 Sample : N4115-18
 Misc : 25.0mL/MSVOA_U/WATER
 ALS Vial : 8 Sample Multiplier: 1

Instrument :
 MSVOA_U
 ClientSampleId :
 F5E02

Quant Method : Z:\voasrv\HPCHEM1\MSVOA_U\Method\SFAMUTR080422WMA.M
 Quant Title : TRACE VOA SFAM1.0

TIC Library : C:\Database\NIST20.L
 TIC Integration Parameters: LSCINT.P



Data Path : Z:\voasrv\HPCHEM1\MSVOA_U\Data\VU081522\
 Data File : VU050337.D
 Acq On : 15 Aug 2022 13:33
 Operator : SY/MD
 Sample : N4115-18
 Misc : 25.0mL/MSVOA_U/WATER
 ALS Vial : 8 Sample Multiplier: 1

Instrument :
 MSVOA_U
 ClientSampleId :
 F5E02

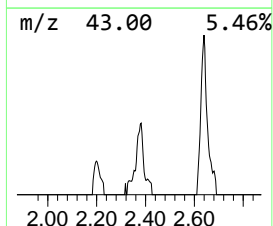
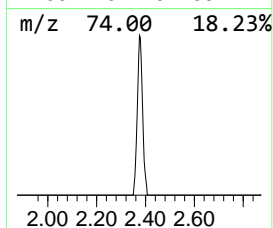
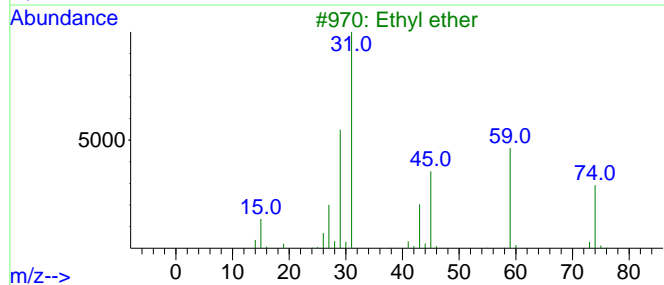
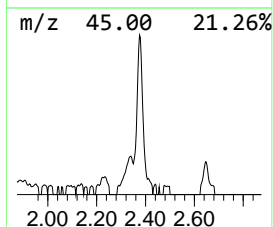
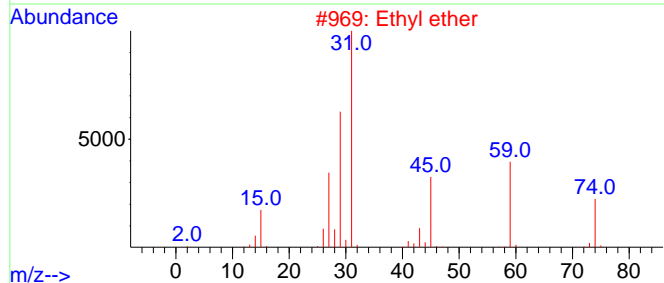
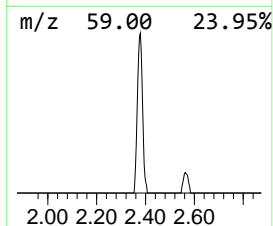
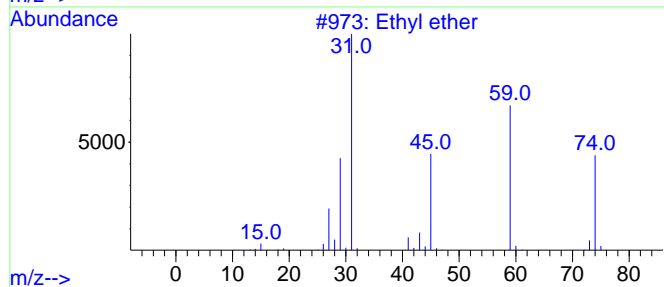
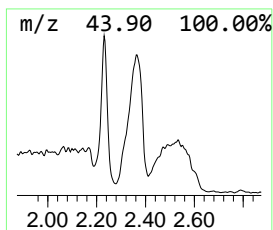
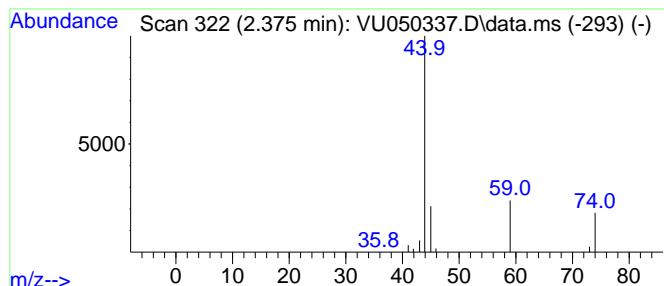
Quant Method : Z:\voasrv\HPCHEM1\MSVOA_U\Method\SFAMUTR080422WMA.M
 Quant Title : TRACE VOA SFAM1.0

TIC Library : C:\Database\NIST20.L
 TIC Integration Parameters: LSCINT.P

 Peak Number 2 unknown-01 Concentration Rank 2

R.T.	EstConc	Area	Relative to ISTD	R.T.
2.375	1.44 ug/L	61147	1,4-Difluorobenzene	6.250

Hit#	of	5	Tentative ID	MW	MolForm	CAS#	Qual
1			Ethyl ether	74	C4H10O	000060-29-7	27
2			Ethyl ether	74	C4H10O	000060-29-7	16
3			Ethyl ether	74	C4H10O	000060-29-7	16
4			Ethyl ether	74	C4H10O	000060-29-7	12
5			Propanoic acid	74	C3H6O2	000079-09-4	9



Data Path : Z:\voasrv\HPCHEM1\MSVOA_U\Data\VU081522\
Data File : VU050337.D
Acq On : 15 Aug 2022 13:33
Operator : SY/MD
Sample : N4115-18
Misc : 25.0mL/MSVOA_U/WATER
ALS Vial : 8 Sample Multiplier: 1

Instrument :
MSVOA_U
ClientSampleId :
F5E02

Quant Method : Z:\voasrv\HPCHEM1\MSVOA_U\Method\SFAMUTR080422WMA.M
Quant Title : TRACE VOA SFAM1.0

TIC Library : C:\Database\NIST20.L
TIC Integration Parameters: LSCINT.P

TIC Top Hit name	RT	EstConc	Units	Response	--Internal Standard--			
					#	RT	Resp	Conc
unknown-01	2.375	1.4	ug/L	61147	1	6.250	212166	5.0