

Data Path : Z:\voasrv\HPCHEM1\MSVOA_U\Data\VU082224\
 Data File : VU060501.D
 Acq On : 22 Aug 2024 13:48
 Operator : MD/SY
 Sample : VSTD0.5
 Misc : 25.0mL/MSVOA_U/WATER
 ALS Vial : 2 Sample Multiplier: 1

Instrument :
 MSVOA_U
 ClientSampleId :

Quant Time: Aug 23 06:32:59 2024
 Quant Method : Z:\voasrv\HPCHEM1\MSVOA_U\Method\SFAMUTR082224WMA.M
 Quant Title : TRACE VOA SFAM1.0
 QLast Update : Fri Aug 23 06:32:15 2024
 Response via : Initial Calibration

Compound	R.T.	QI on	Response	Conc	Units	Dev(Min)	
Internal Standards							
1) 1,4-Difluorobenzene	6.245	114	75101	5.000	ug/L	0.00	
28) Chlorobenzene-d5	9.412	117	78947	5.000	ug/L	0.00	
58) 1,4-Dichlorobenzene-d4	11.807	152	35208	5.000	ug/L	0.00	
System Monitoring Compounds							
4) Vinyl chloride-d3	1.596	65	1643	0.308	ug/L	0.00	
7) Chloroethane-d5	1.914	69	2540	0.495	ug/L	0.00	
11) 1,1-Dichloroethene-d2	2.563	65	1328	0.565	ug/L	0.00	
20) 2-Butanone-d5	4.669	46	1773	1.427	ug/L	0.04	
24) Chloroform-d	5.062	84	4232	0.377	ug/L	0.00	
26) 1,2-Dichloroethane-d4	5.705	65	2311	0.430	ug/L	0.00	
32) Benzene-d6	5.730	84	7416	0.329	ug/L	0.00	
36) 1,2-Dichloropropane-d6	6.689	67	2526	0.358	ug/L	0.00	
41) Toluene-d8	7.898	98	5837	0.292	ug/L	0.00	
43) trans-1,3-Dichloroprop...	8.184	79	782	0.341	ug/L	0.00	
46) 2-Hexanone-d5	8.637	63	2869	2.835	ug/L	0.00	
56) 1,1,2,2-Tetrachloroeth...	10.756	84	2228	0.386	ug/L	0.00	
66) 1,2-Dichlorobenzene-d4	12.190	152	2582	0.437	ug/L	0.00	
Target Compounds							
2) Dichlorodifluoromethane	1.383	85	4391	0.874	ug/L	95	Qvalue
3) Chloromethane	1.518	50	3508	0.639	ug/L	87	
5) Vinyl chloride	1.602	62	3263	0.534	ug/L	92	
6) Bromomethane	1.856	94	2967	0.642	ug/L	93	
8) Chloroethane	1.930	64	3753	0.844	ug/L	99	
9) Trichlorofluoromethane	2.133	101	8374	0.898	ug/L	99	
10) 1,1,2-Trichloro-1,2,2-...	2.573	101	4246	0.766	ug/L	97	
12) 1,1-Dichloroethene	2.579	96	3856	0.773	ug/L	81	
13) Acetone	2.653	43	2588	3.027	ug/L	43	
14) Carbon disulfide	2.788	76	14077	1.028	ug/L	96	
15) Methyl acetate	2.978	43	1492	0.800	ug/L #	91	
16) Methylene chloride	3.039	84	5129	0.723	ug/L	93	
17) Methyl tert-butyl Ether	3.358	73	8258	0.697	ug/L	94	
18) trans-1,2-Dichloroethene	3.351	96	3711	0.754	ug/L	91	
19) 1,1-Dichloroethane	3.866	63	5640	0.546	ug/L #	89	
21) 2-Butanone	4.740	43	4802	3.686	ug/L	95	
22) cis-1,2-Dichloroethene	4.669	96	2452	0.417	ug/L	70	
23) Bromochloromethane	4.968	128	539	0.200	ug/L #	87	
25) Chloroform	5.087	83	6114	0.553	ug/L	83	
27) 1,2-Dichloroethane	5.792	62	3689	0.596	ug/L #	91	
29) 1,1,1-Trichloroethane	5.309	97	4933	0.543	ug/L	94	
30) Cyclohexane	5.377	56	3725	0.495	ug/L #	92	
31) Carbon tetrachloride	5.518	117	4658	0.581	ug/L	93	
33) Benzene	5.772	78	10883	0.472	ug/L	100	
34) Trichloroethene	6.541	95	3343	0.549	ug/L	89	
35) Methyl cyclohexane	6.756	83	3775	0.465	ug/L	96	
37) 1,2-Dichloropropane	6.788	63	3046	0.482	ug/L #	90	
38) Bromodichloromethane	7.103	83	3795	0.486	ug/L #	90	
39) cis-1,3-Dichloropropene	7.608	75	3704	0.431	ug/L	88	
40) 4-Methyl-2-pentanone	7.791	43	13991	4.657	ug/L #	97	
42) Toluene	7.968	91	10759	0.440	ug/L	95	
44) trans-1,3-Dichloropropene	8.213	75	2860	0.400	ug/L	97	

Data Path : Z:\voasrv\HPCHEM1\MSVOA_U\Data\VU082224\
 Data File : VU060501.D
 Acq On : 22 Aug 2024 13:48
 Operator : MD/SY
 Sample : VSTD0.5
 Misc : 25.0mL/MSVOA_U/WATER
 ALS Vial : 2 Sample Multiplier: 1

Instrument :
 MSVOA_U
ClientSampleId :

Quant Time: Aug 23 06:32:59 2024
 Quant Method : Z:\voasrv\HPCHEM1\MSVOA_U\Method\SFAMUTR082224WMA.M
 Quant Title : TRACE VOA SFAM1.0
 QLast Update : Fri Aug 23 06:32:15 2024
 Response via : Initial Calibration

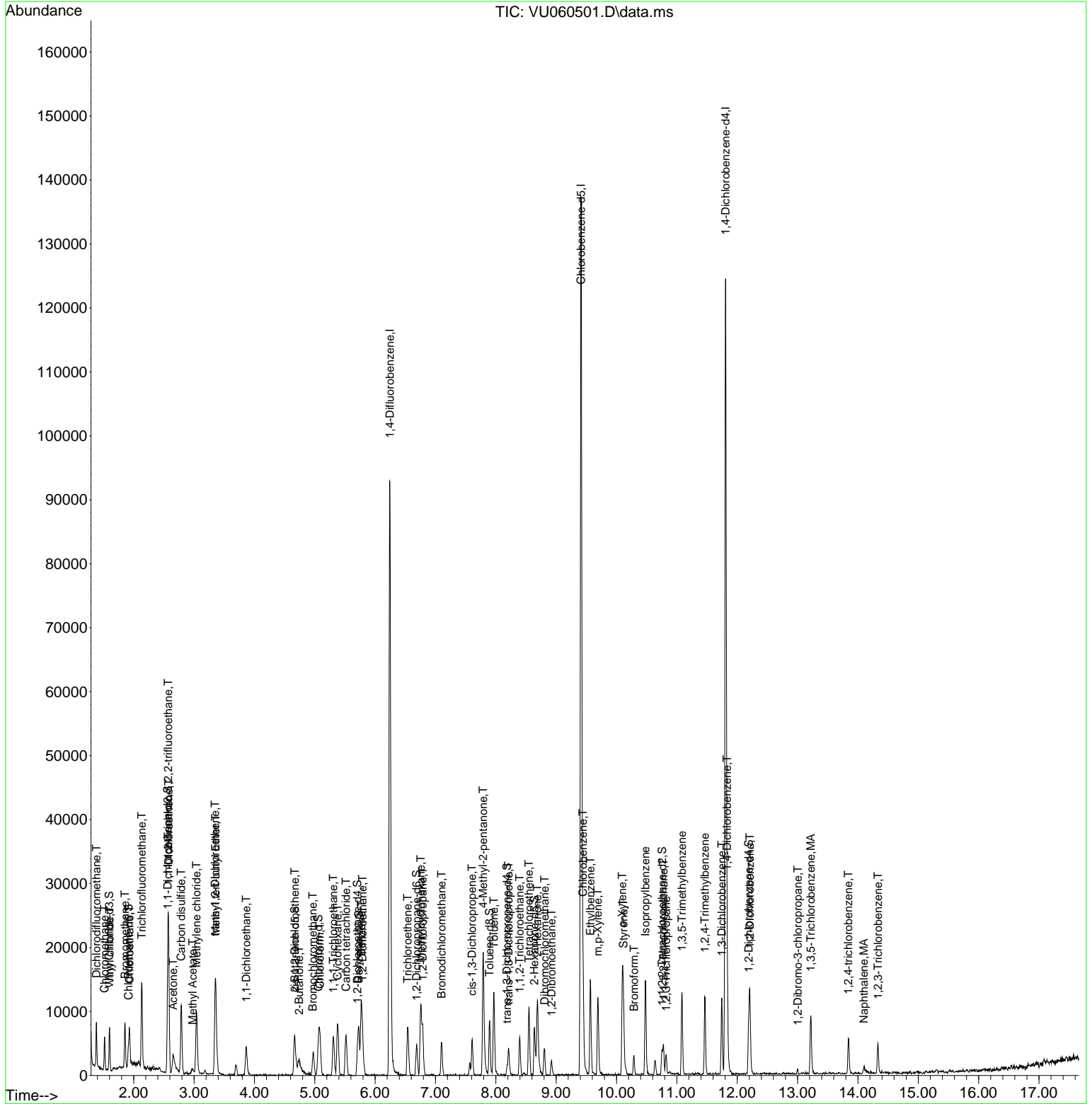
Compound	R.T.	QI on	Response	Conc	Units	Dev(Min)
45) 1, 1, 2-Tri chloroethane	8.396	97	2006	0.425	ug/L	97
47) Tetrachloroethene	8.550	164	2312	0.480	ug/L	95
48) 2-Hexanone	8.689	43	9163	4.066	ug/L #	91
49) Dibromochloromethane	8.807	129	2520	0.499	ug/L	91
50) 1, 2-Dibromoethane	8.923	107	1702	0.404	ug/L #	97
51) Chlorobenzene	9.444	112	7490	0.457	ug/L	99
52) Ethyl benzene	9.566	91	10900	0.421	ug/L	100
53) m, p-Xylene	9.688	106	3803	0.388	ug/L	91
54) o-Xylene	10.097	106	3658	0.391	ug/L	99
55) Styrene	10.116	104	6462	0.401	ug/L	98
57) 1, 1, 2, 2-Tetrachloroethane	10.778	83	2548	0.437	ug/L	96
59) Bromoform	10.290	173	1608	0.629	ug/L #	78
60) Isopropyl benzene	10.479	105	9778	0.479	ug/L	97
61) 1, 2, 3-Tri chloropropane	10.823	75	1869	0.579	ug/L #	88
62) 1, 3, 5-Tri methyl benzene	11.087	105	7285	0.463	ug/L	97
63) 1, 2, 4-Tri methyl benzene	11.463	105	7007	0.431	ug/L	100
64) 1, 3-Di chlorobenzene	11.746	146	5304	0.483	ug/L	99
65) 1, 4-Di chlorobenzene	11.833	146	5327	0.485	ug/L	95
67) 1, 2-Di chlorobenzene	12.209	146	5159	0.531	ug/L	99
68) 1, 2-Di bromo-3-chloropr...	13.003	75	261	0.428	ug/L	87
69) 1, 3, 5-Tri chlorobenzene	13.219	180	3959	0.507	ug/L	98
70) 1, 2, 4-tri chlorobenzene	13.843	180	2635	0.432	ug/L #	84
71) Naphthalene	14.100	128	1882	0.220	ug/L #	77
72) 1, 2, 3-Tri chlorobenzene	14.331	180	2070	0.380	ug/L #	89

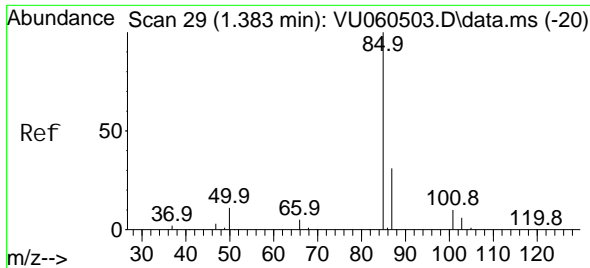
(#) = qualifier out of range (m) = manual integration (+) = signals summed

Data Path : Z:\voasrv\HPCHEM1\MSVOA_U\Data\VU082224\
 Data File : VU060501.D
 Acq On : 22 Aug 2024 13: 48
 Operator : MD/SY
 Sample : VSTD0. 5
 Misc : 25. 0mL/MSVOA_U/WATER
 ALS Vial : 2 Sample Multiplier: 1

Instrument :
 MSVOA_U
 ClientSampleId :

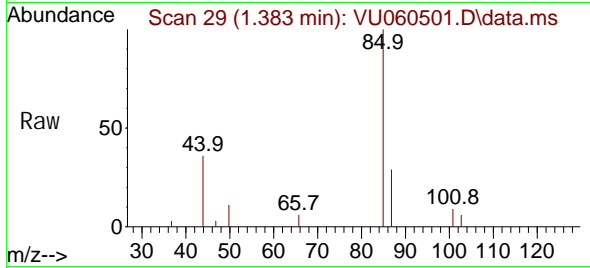
Quant Time: Aug 23 06: 32: 59 2024
 Quant Method : Z:\voasrv\HPCHEM1\MSVOA_U\Method\SFAMUTR082224WMA. M
 Quant Title : TRACE VOA SFAM1. 0
 QLast Update : Fri Aug 23 06: 32: 15 2024
 Response via : Initial Calibration



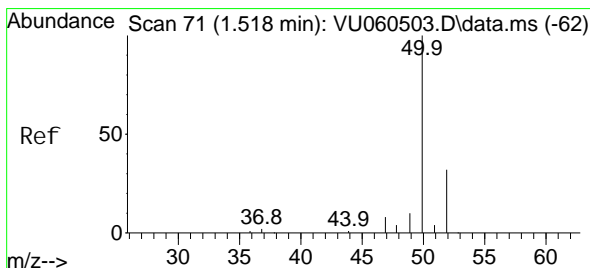
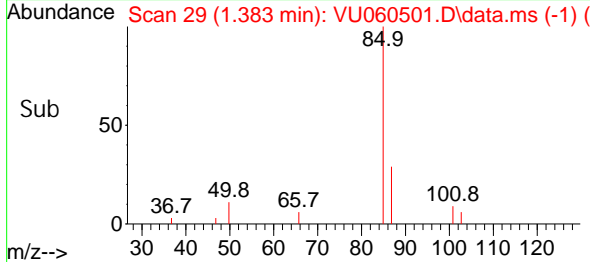
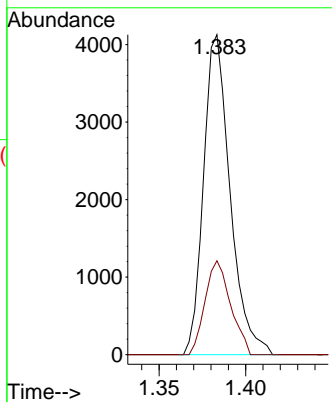


#2
 Di chl orodi fluoromethane
 Concen: 0.874 ug/L
 RT: 1.383 min Scan# 29
 Delta R.T. -0.000 min
 Lab File: VU060501.D
 Acq: 22 Aug 2024 13:48

Instrument :
 MSVOA_U
 ClientSampleId :

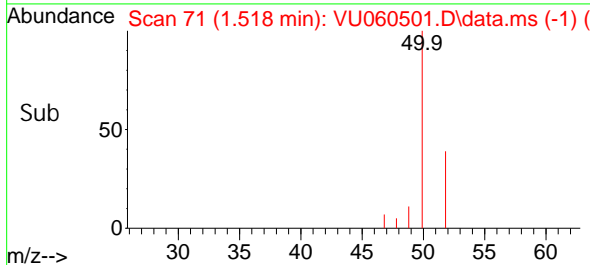
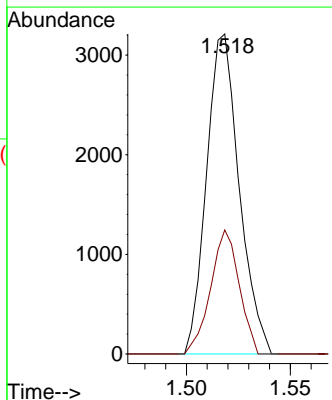
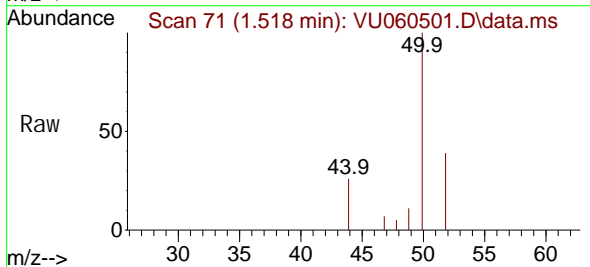


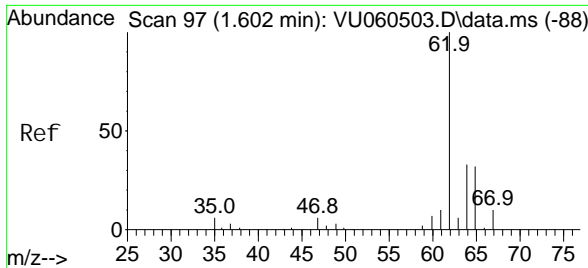
Tgt Ion: 85 Resp: 4391
 Ion Ratio Lower Upper
 85 100
 87 28.2 24.6 37.0



#3
 Chloromethane
 Concen: 0.639 ug/L
 RT: 1.518 min Scan# 71
 Delta R.T. -0.000 min
 Lab File: VU060501.D
 Acq: 22 Aug 2024 13:48

Tgt Ion: 50 Resp: 3508
 Ion Ratio Lower Upper
 50 100
 52 38.8 22.2 41.2

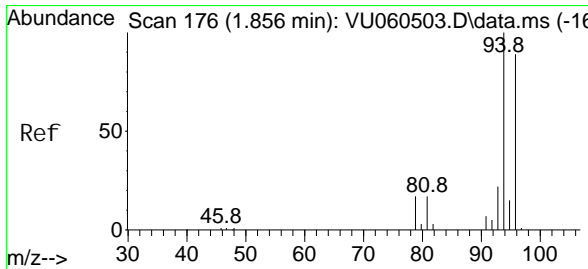
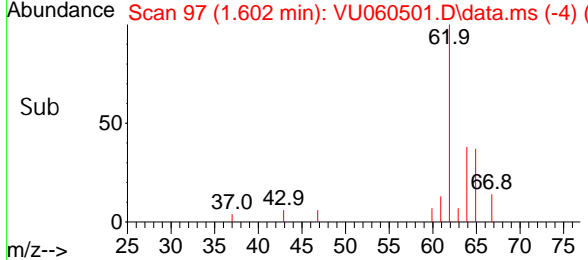
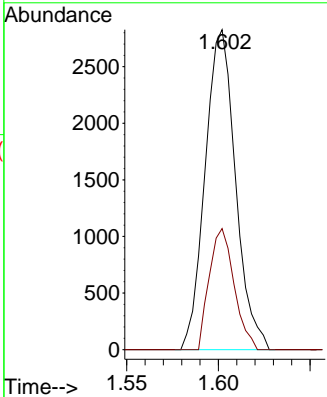
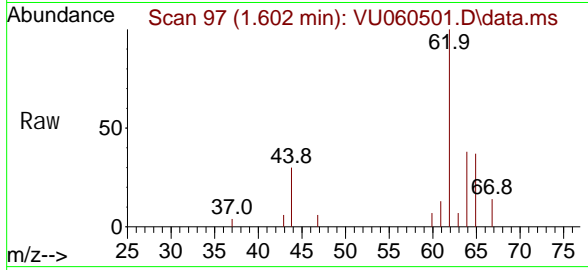




#5
 Vinyl chloride
 Concen: 0.534 ug/L
 RT: 1.602 min Scan# 91
 Delta R.T. -0.000 min
 Lab File: VU060501.D
 Acq: 22 Aug 2024 13:48

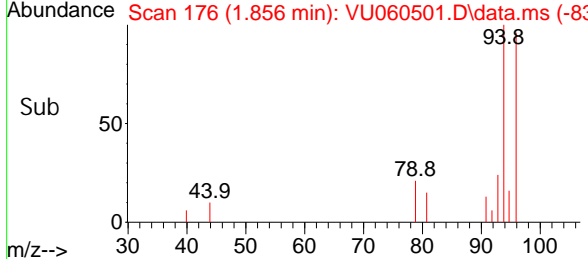
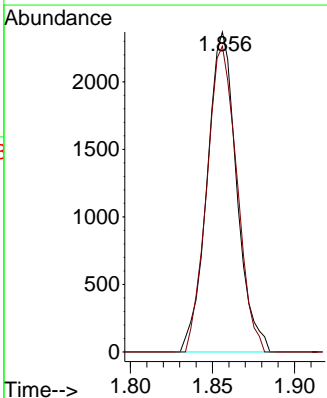
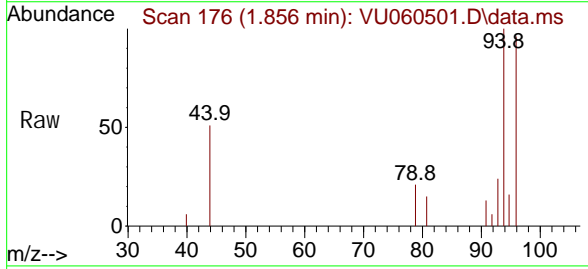
Instrument : MSVOA_U
 ClientSampleId :

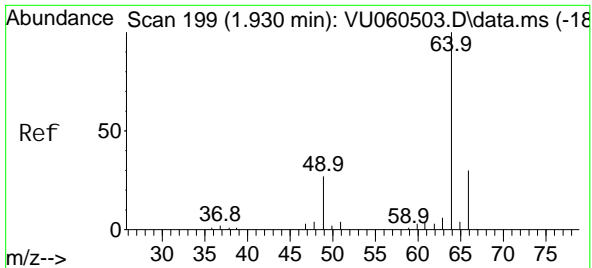
Tgt Ion	Resp	Lower	Upper
62	3263		
62	100		
64	37.8	23.2	43.0



#6
 Bromomethane
 Concen: 0.642 ug/L
 RT: 1.856 min Scan# 176
 Delta R.T. -0.000 min
 Lab File: VU060501.D
 Acq: 22 Aug 2024 13:48

Tgt Ion	Resp	Lower	Upper
94	2967		
94	100		
96	82.6	62.4	115.8



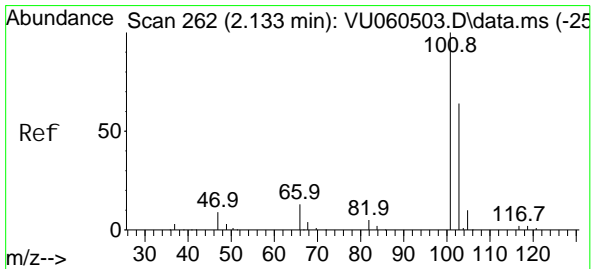
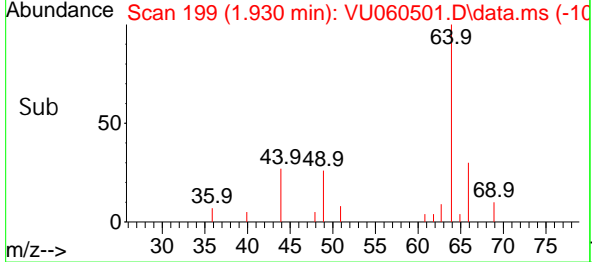
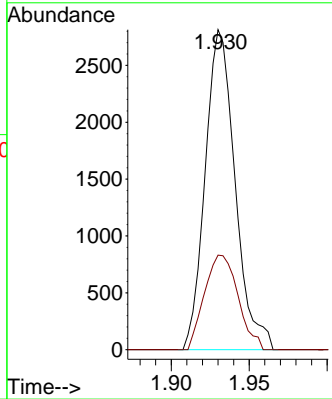
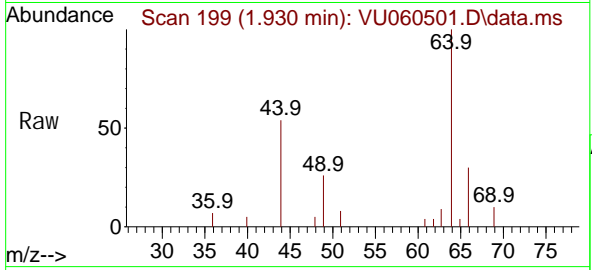


Chloroethane
 Concen: 0.844 ug/L
 RT: 1.930 min Scan# 199
 Delta R.T. -0.000 min
 Lab File: VU060501.D
 Acq: 22 Aug 2024 13:48

Instrument : MSVOA_U
 ClientSampleId :

Tgt Ion: 64 Resp: 3753

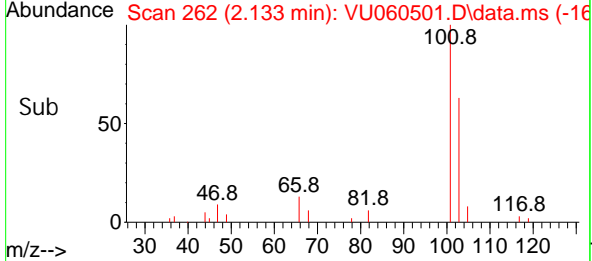
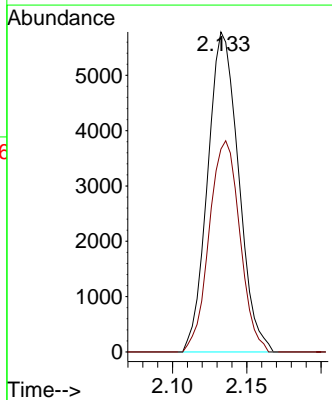
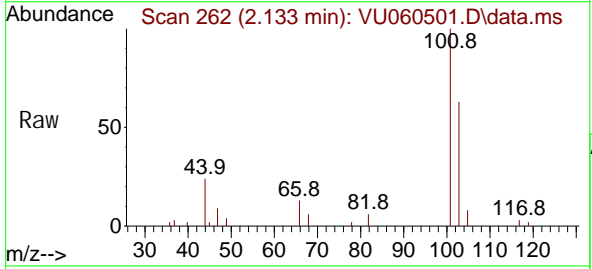
Ion	Ratio	Lower	Upper
64	100		
66	29.6	21.1	39.1

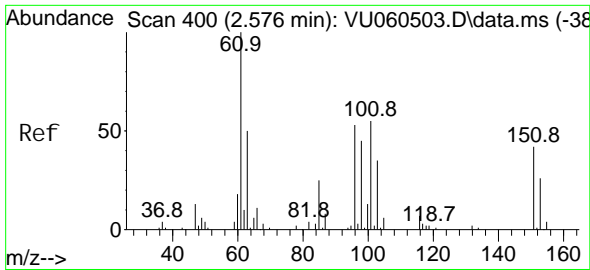


Tri chlorofluoromethane
 Concen: 0.898 ug/L
 RT: 2.133 min Scan# 262
 Delta R.T. -0.000 min
 Lab File: VU060501.D
 Acq: 22 Aug 2024 13:48

Tgt Ion: 101 Resp: 8374

Ion	Ratio	Lower	Upper
101	100		
103	65.5	51.7	77.5

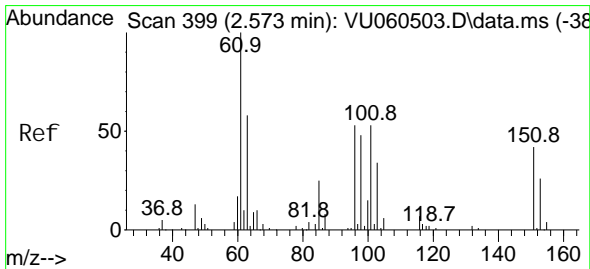
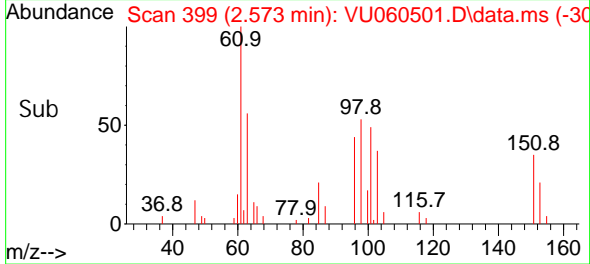
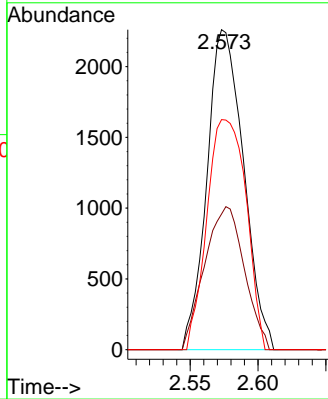
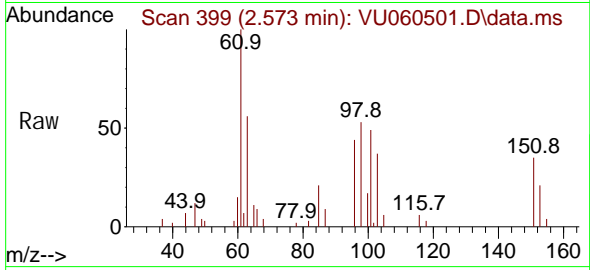




#10
 1,1,2-Tri chloro-1,2,2-tri fluoroethane
 Concen: 0.766 ug/L
 RT: 2.573 min Scan# 399
 Delta R.T. -0.003 min
 Lab File: VU060501.D
 Acq: 22 Aug 2024 13:48

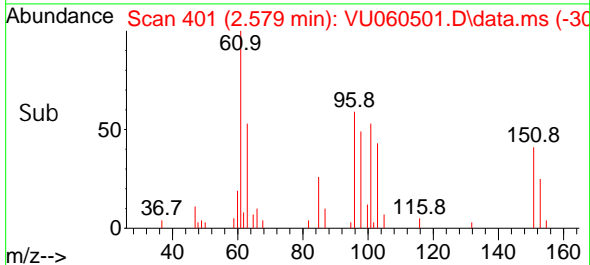
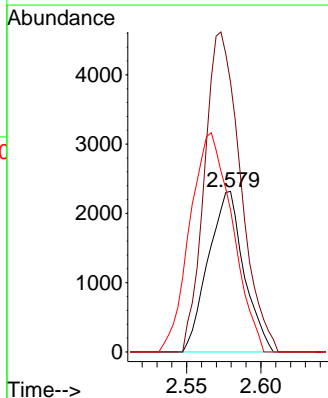
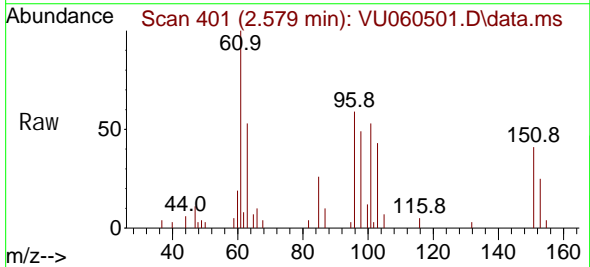
Instrument : MSVOA_U
 ClientSampleId :

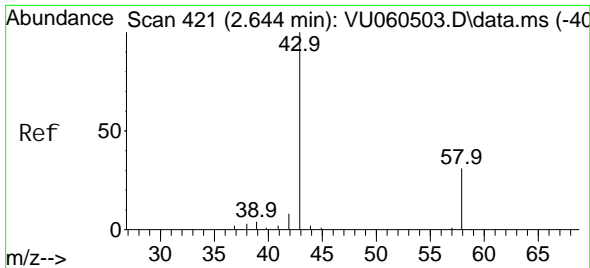
Tgt Ion	Resp	Lower	Upper
101	4246		
101	100		
85	48.6	36.2	54.2
151	76.9	59.9	89.9



#12
 1,1-Di chloroethene
 Concen: 0.773 ug/L
 RT: 2.579 min Scan# 401
 Delta R.T. 0.006 min
 Lab File: VU060501.D
 Acq: 22 Aug 2024 13:48

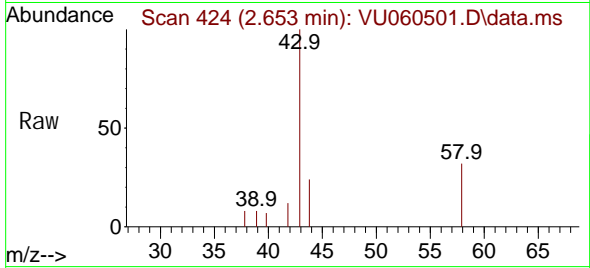
Tgt Ion	Resp	Lower	Upper
96	3856		
96	100		
61	168.1	133.6	248.0
63	88.6	80.8	150.2



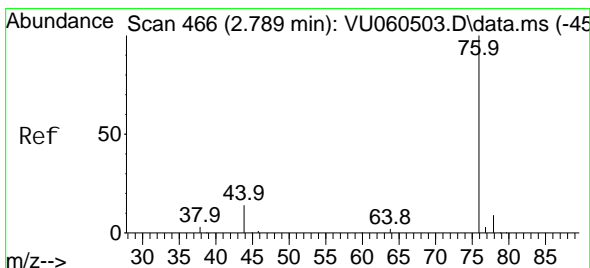
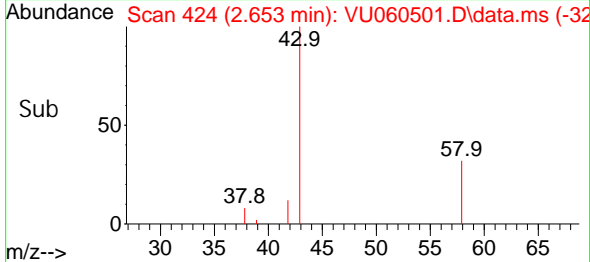
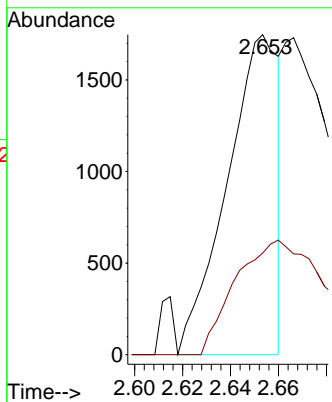


#13
 Acetone
 Concen: 3.027 ug/L
 RT: 2.653 min Scan# 41
 Delta R.T. 0.010 min
 Lab File: VU060501.D
 Acq: 22 Aug 2024 13:48

Instrument :
 MSVOA_U
 ClientSampleId :

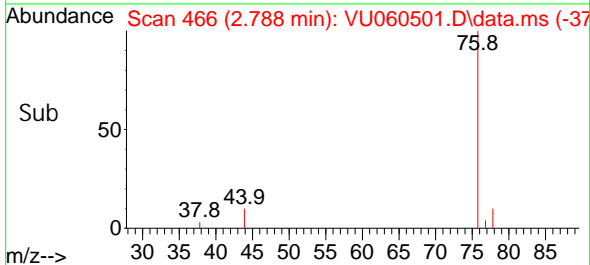
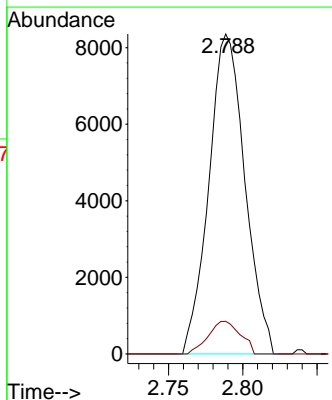
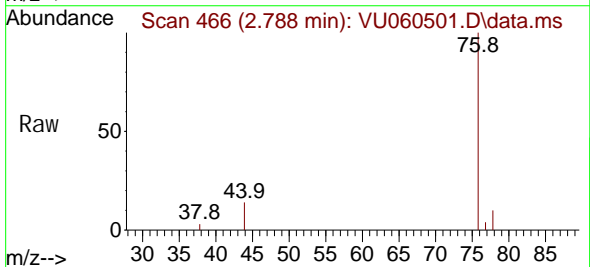


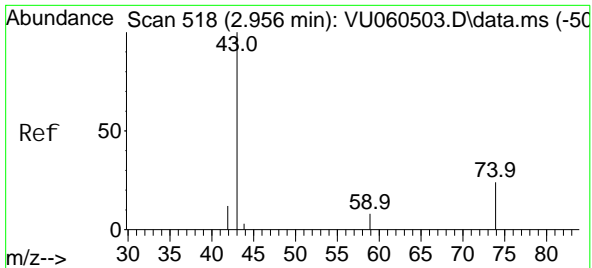
Tgt Ion: 43 Resp: 2588
 Ion Ratio Lower Upper
 43 100
 58 63.3 0.0 63.6



#14
 Carbon di sul fi de
 Concen: 1.028 ug/L
 RT: 2.788 min Scan# 466
 Delta R.T. -0.000 min
 Lab File: VU060501.D
 Acq: 22 Aug 2024 13:48

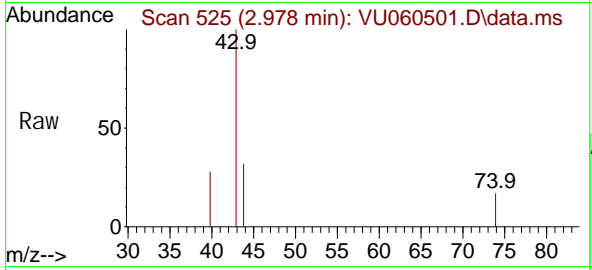
Tgt Ion: 76 Resp: 14077
 Ion Ratio Lower Upper
 76 100
 78 10.2 7.1 10.7



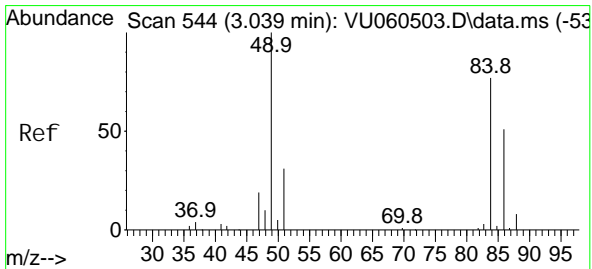
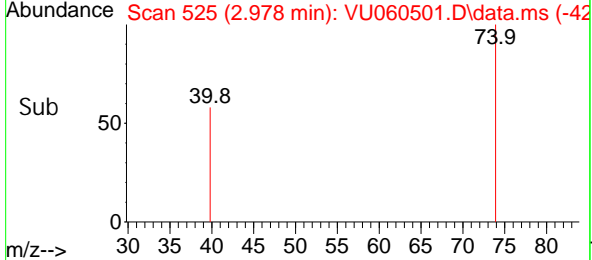
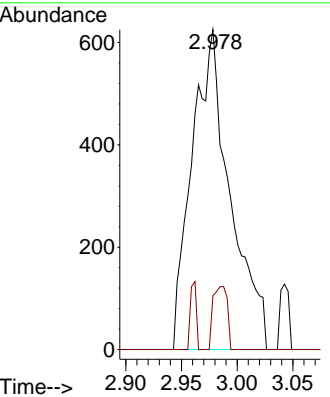


#15
 Methyl Acetate
 Concen: 0.800 ug/L
 RT: 2.978 min Scan# 515
 Delta R.T. 0.022 min
 Lab File: VU060501.D
 Acq: 22 Aug 2024 13:48

Instrument : MSVOA_U
 ClientSampleId :

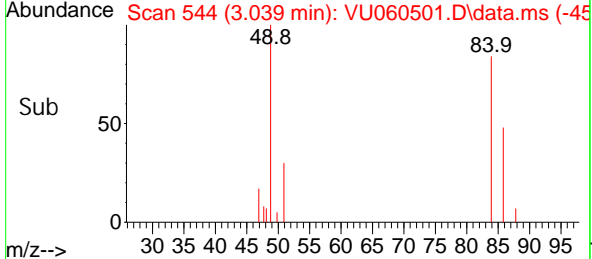
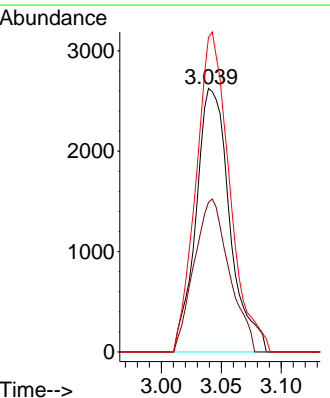
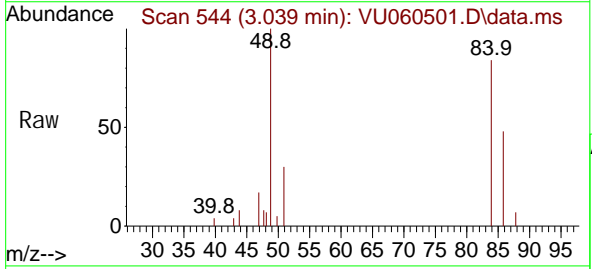


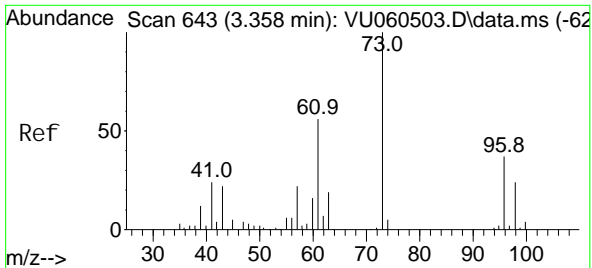
Tgt Ion: 43 Resp: 1492
 Ion Ratio Lower Upper
 43 100
 74 7.3 8.5 12.7#



#16
 Methylene chloride
 Concen: 0.723 ug/L
 RT: 3.039 min Scan# 544
 Delta R.T. -0.000 min
 Lab File: VU060501.D
 Acq: 22 Aug 2024 13:48

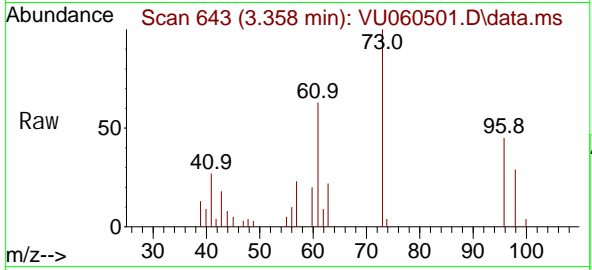
Tgt Ion: 84 Resp: 5129
 Ion Ratio Lower Upper
 84 100
 86 56.8 46.7 86.7
 49 125.6 91.0 169.0





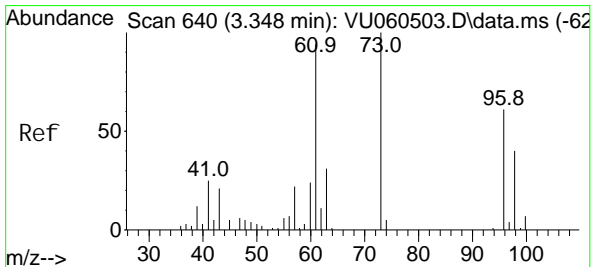
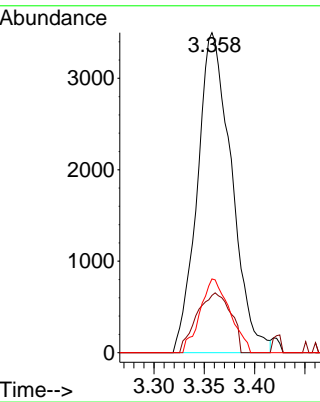
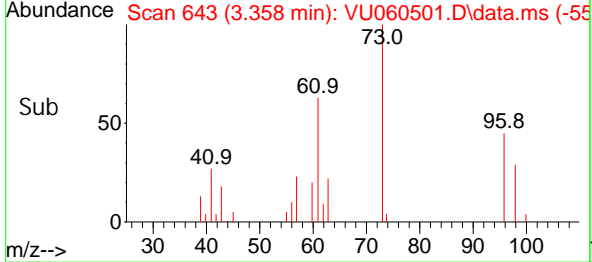
#17
 Methyl tert-butyl Ether
 Concen: 0.697 ug/L
 RT: 3.358 min Scan# 641
 Delta R.T. -0.000 min
 Lab File: VU060501.D
 Acq: 22 Aug 2024 13:48

Instrument :
 MSVOA_U
 ClientSampleId :

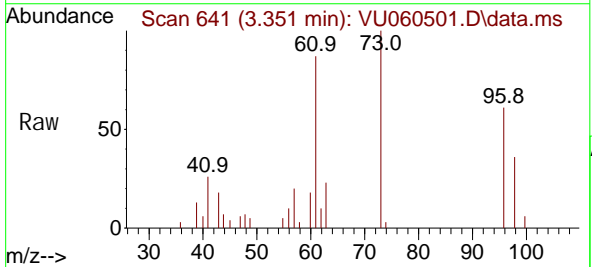


Tgt Ion: 73 Resp: 8258

Ion	Ratio	Lower	Upper
73	100		
43	18.6	17.5	26.3
57	20.0	17.8	26.6

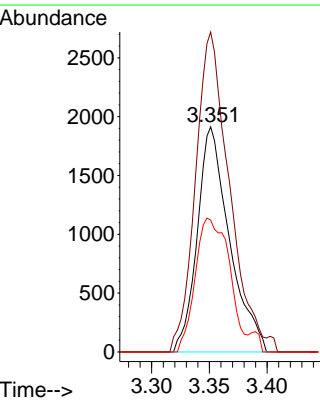
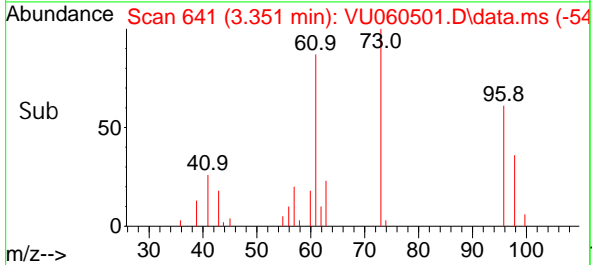


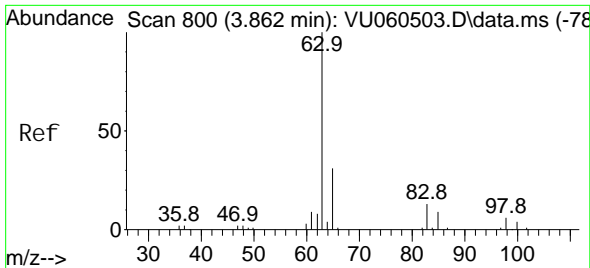
#18
 trans-1,2-Dichloroethene
 Concen: 0.754 ug/L
 RT: 3.351 min Scan# 641
 Delta R.T. 0.003 min
 Lab File: VU060501.D
 Acq: 22 Aug 2024 13:48



Tgt Ion: 96 Resp: 3711

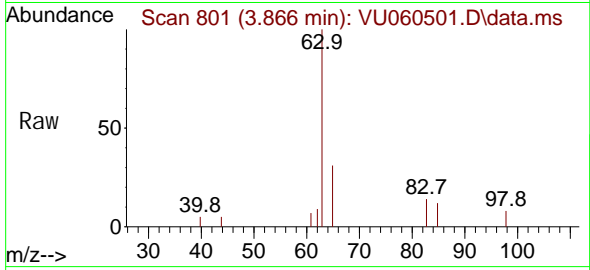
Ion	Ratio	Lower	Upper
96	100		
61	142.1	108.4	201.4
98	58.5	45.4	84.2



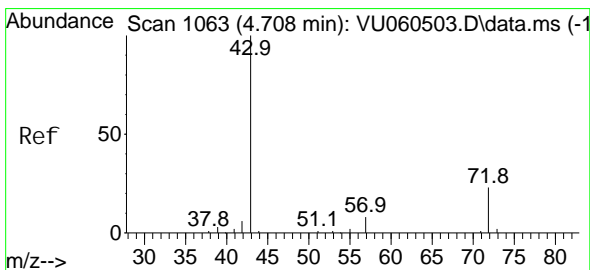
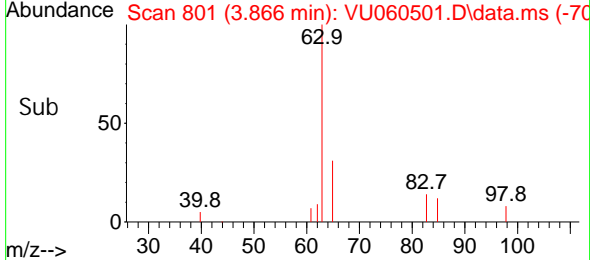
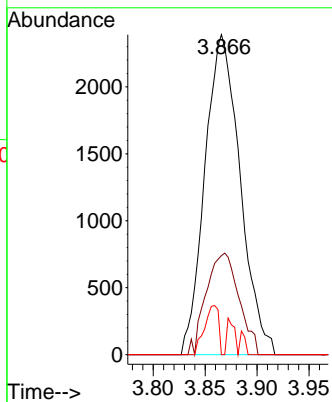


#19
 1,1-Dichloroethane
 Concen: 0.546 ug/L
 RT: 3.866 min Scan# 800
 Delta R.T. 0.003 min
 Lab File: VU060501.D
 Acq: 22 Aug 2024 13:48

Instrument : MSVOA_U
 ClientSampleId :

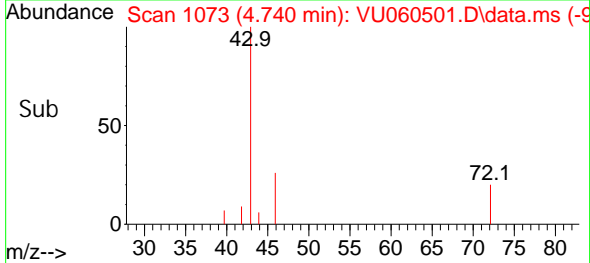
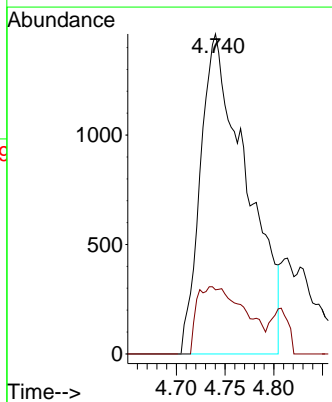
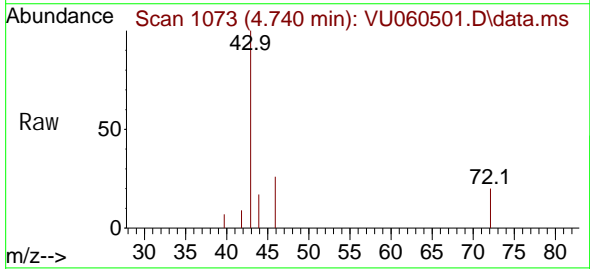


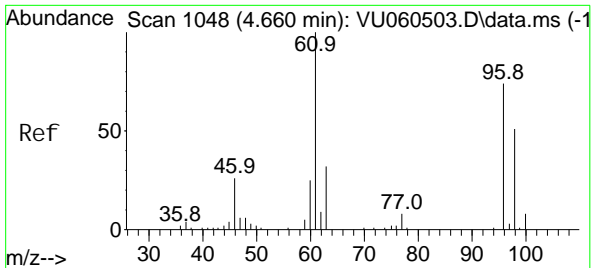
Tgt Ion: 63 Resp: 5640
 Ion Ratio Lower Upper
 63 100
 65 31.0 21.4 39.8
 83 0.0 9.4 17.4#



#21
 2-Butanone
 Concen: 3.686 ug/L
 RT: 4.740 min Scan# 1073
 Delta R.T. 0.032 min
 Lab File: VU060501.D
 Acq: 22 Aug 2024 13:48

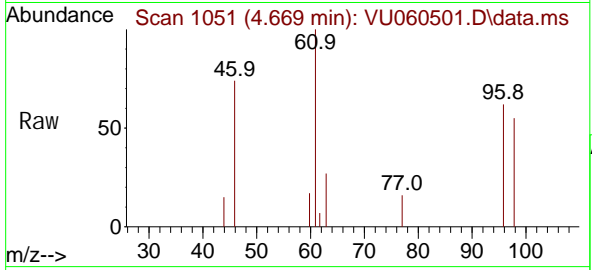
Tgt Ion: 43 Resp: 4802
 Ion Ratio Lower Upper
 43 100
 72 22.0 12.3 36.8





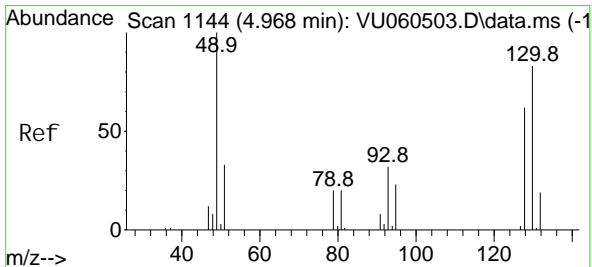
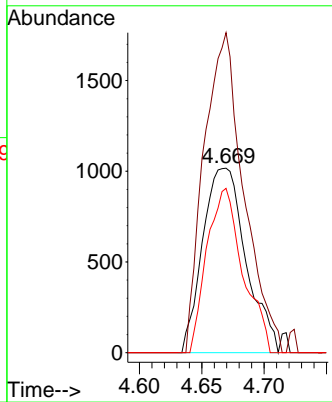
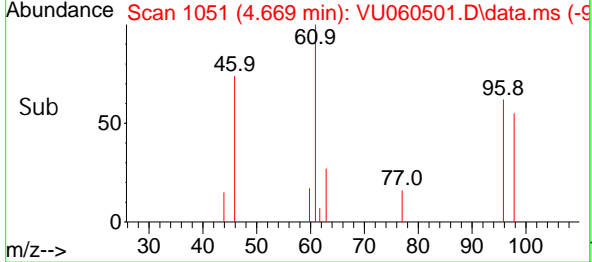
#22
 cis-1,2-Dichloroethene
 Concen: 0.417 ug/L
 RT: 4.669 min Scan# 1048
 Delta R.T. 0.010 min
 Lab File: VU060501.D
 Acq: 22 Aug 2024 13:48

Instrument : MSVOA_U
 ClientSampleId :

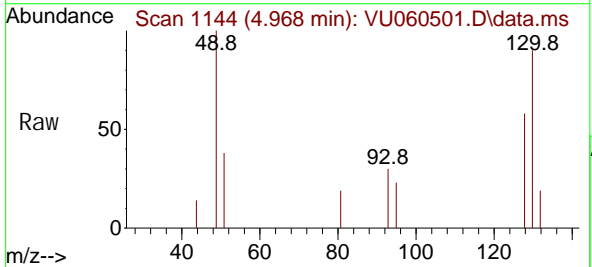


Tgt Ion: 96 Resp: 2452

Ion	Ratio	Lower	Upper
96	100		
61	173.5	94.6	175.8
98	89.1	48.2	89.6

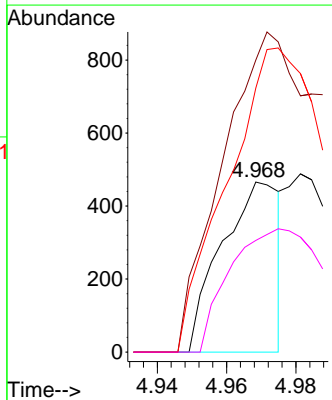
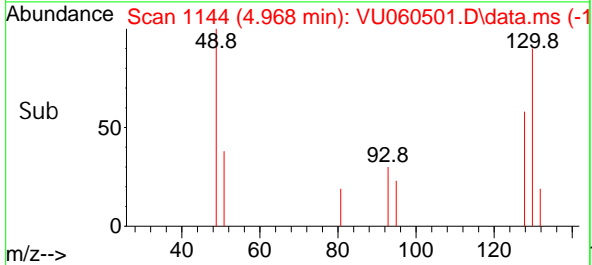


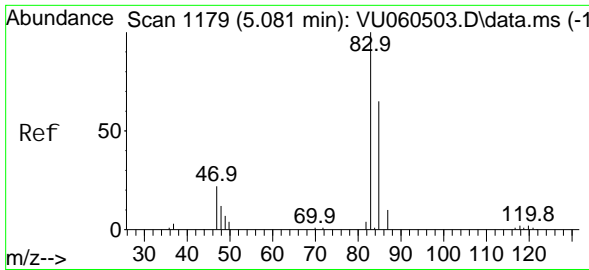
#23
 Bromochloromethane
 Concen: 0.200 ug/L
 RT: 4.968 min Scan# 1144
 Delta R.T. -0.000 min
 Lab File: VU060501.D
 Acq: 22 Aug 2024 13:48



Tgt Ion: 128 Resp: 539

Ion	Ratio	Lower	Upper
128	100		
49	171.7	112.4	208.8
130	155.2	93.7	173.9
51	65.7	42.6	63.8

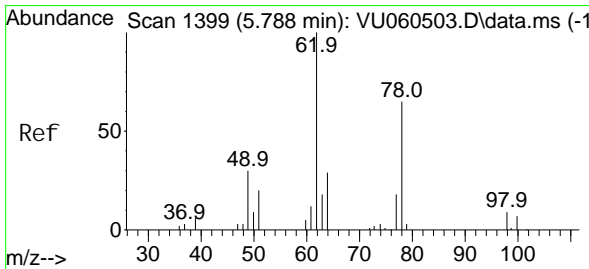
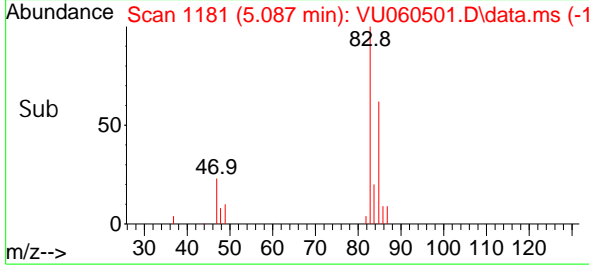
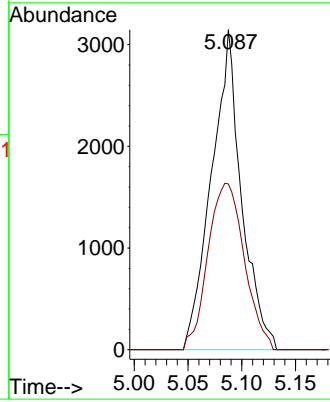
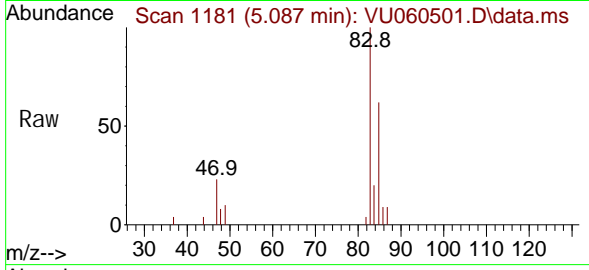




#25
 Chloroform
 Concen: 0.553 ug/L
 RT: 5.087 min Scan# 1179
 Delta R.T. 0.006 min
 Lab File: VU060501.D
 Acq: 22 Aug 2024 13:48

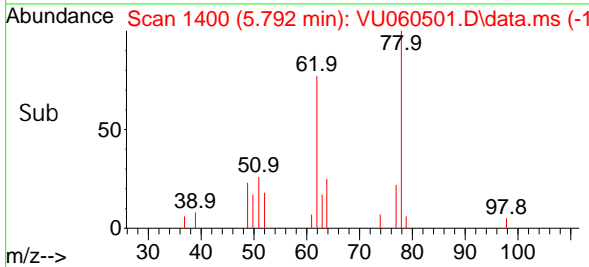
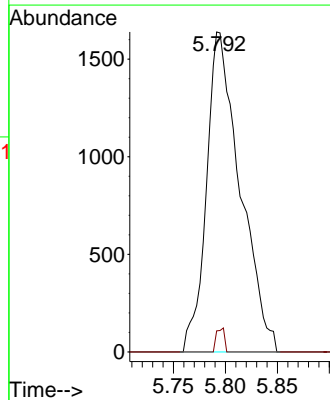
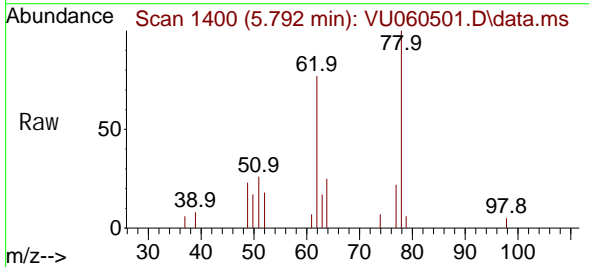
Instrument :
 MSVOA_U
 ClientSampleId :

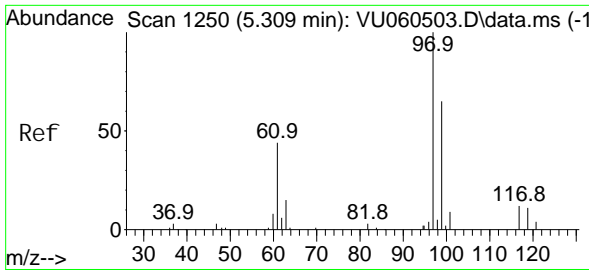
Tgt Ion: 83 Resp: 6114
 Ion Ratio Lower Upper
 83 100
 85 51.8 45.8 85.2



#27
 1,2-Di chloroethane
 Concen: 0.596 ug/L
 RT: 5.792 min Scan# 1400
 Delta R.T. 0.003 min
 Lab File: VU060501.D
 Acq: 22 Aug 2024 13:48

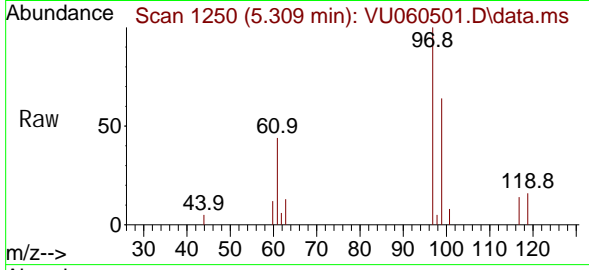
Tgt Ion: 62 Resp: 3689
 Ion Ratio Lower Upper
 62 100
 98 6.6 7.9 11.9#





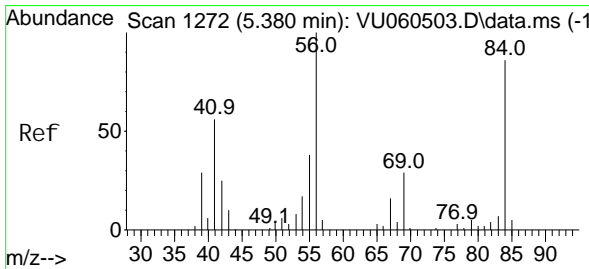
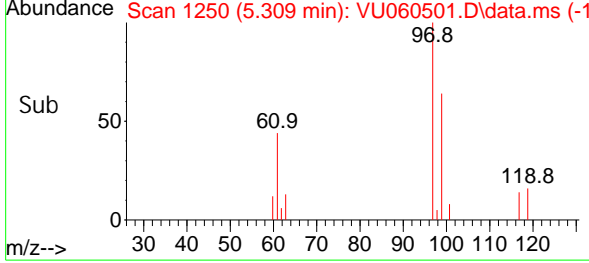
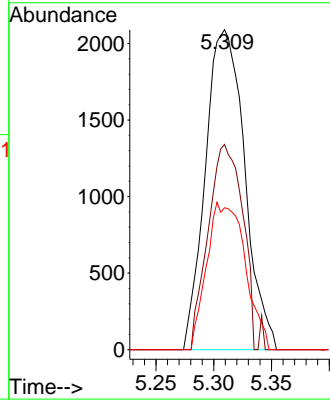
#29
 1, 1, 1-Trichloroethane
 Concen: 0.543 ug/L
 RT: 5.309 min Scan# 11
 Delta R.T. -0.000 min
 Lab File: VU060501.D
 Acq: 22 Aug 2024 13:48

Instrument : MSVOA_U
 ClientSampleId :



Tgt Ion: 97 Resp: 4933

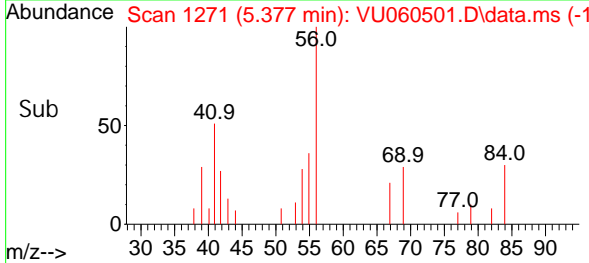
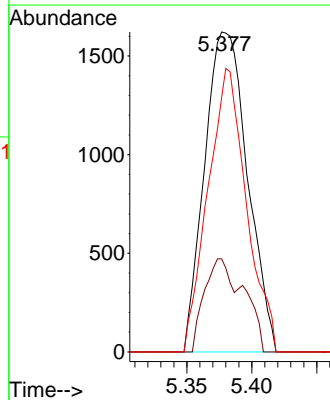
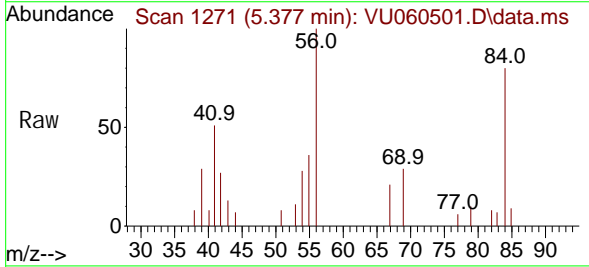
Ion	Ratio	Lower	Upper
97	100		
99	56.3	50.8	76.2
61	44.9	36.6	55.0

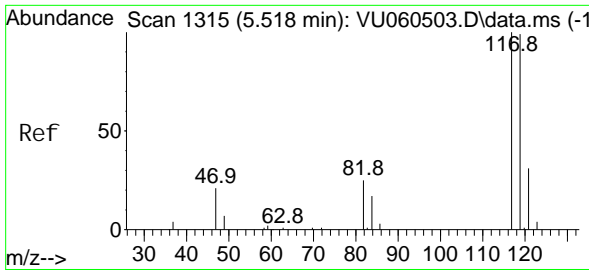


#30
 Cyclohexane
 Concen: 0.495 ug/L
 RT: 5.377 min Scan# 1271
 Delta R.T. -0.003 min
 Lab File: VU060501.D
 Acq: 22 Aug 2024 13:48

Tgt Ion: 56 Resp: 3725

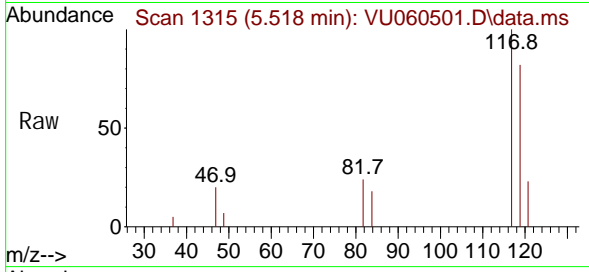
Ion	Ratio	Lower	Upper
56	100		
69	18.3	23.3	34.9#
84	79.3	66.6	99.8



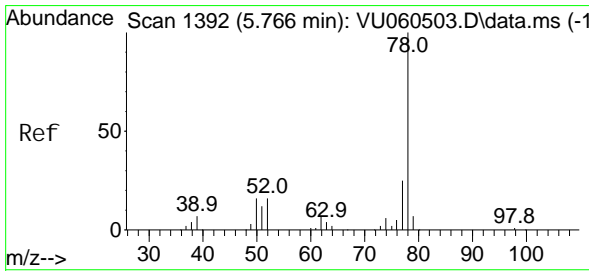
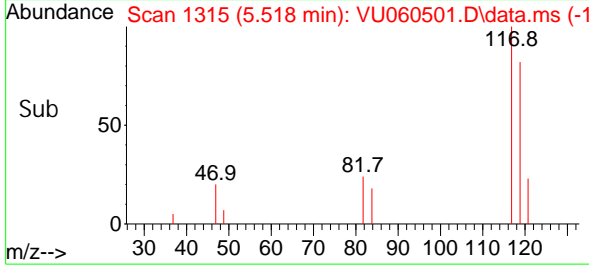
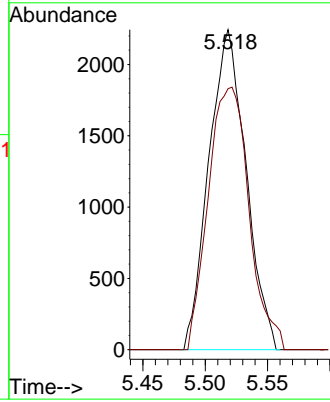


#31
 Carbon tetrachloride
 Concen: 0.581 ug/L
 RT: 5.518 min Scan# 111
 Delta R.T. -0.000 min
 Lab File: VU060501.D
 Acq: 22 Aug 2024 13:48

Instrument : MSVOA_U
 ClientSampleId :

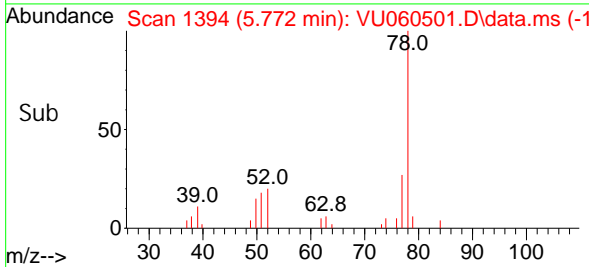
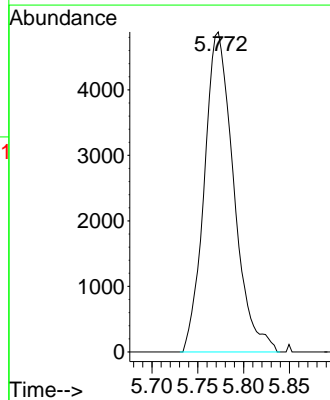
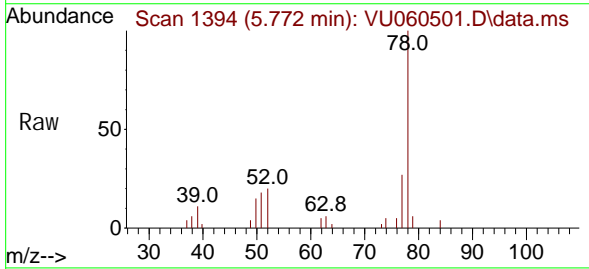


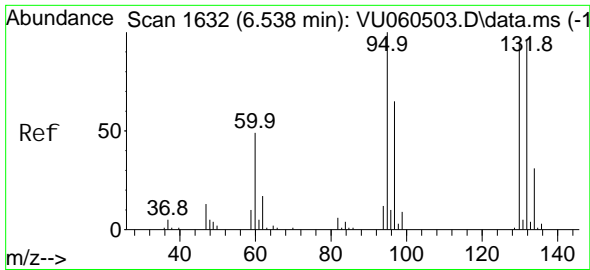
Tgt Ion: 117 Resp: 4658
 Ion Ratio Lower Upper
 117 100
 119 89.8 77.8 116.6



#33
 Benzene
 Concen: 0.472 ug/L
 RT: 5.772 min Scan# 1394
 Delta R.T. 0.006 min
 Lab File: VU060501.D
 Acq: 22 Aug 2024 13:48

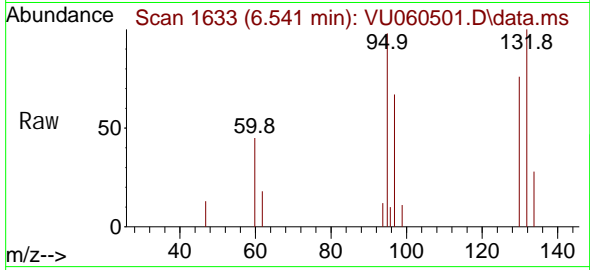
Tgt Ion: 78 Resp: 10883



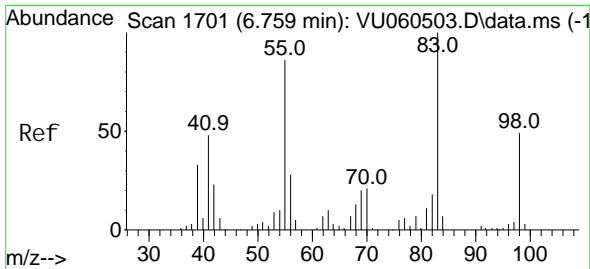
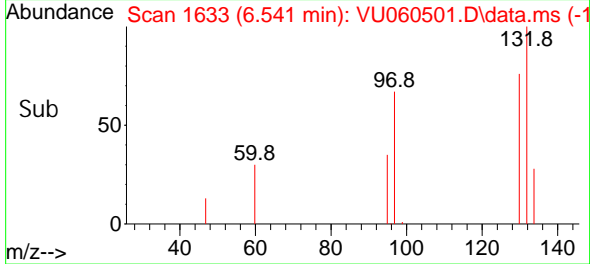
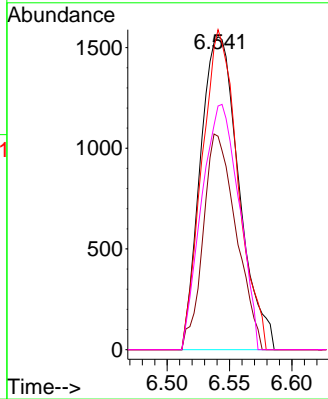


#34
 Trichloroethene
 Concen: 0.549 ug/L
 RT: 6.541 min Scan# 1633
 Delta R.T. 0.003 min
 Lab File: VU060501.D
 Acq: 22 Aug 2024 13:48

Instrument :
 MSVOA_U
 ClientSampleId :

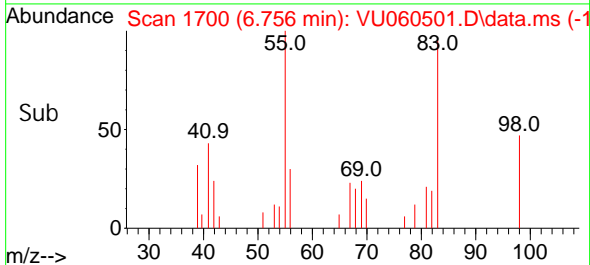
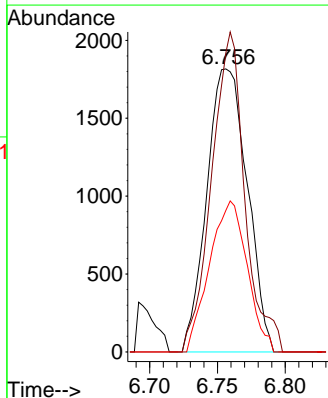
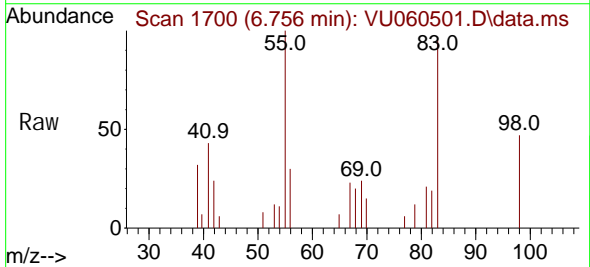


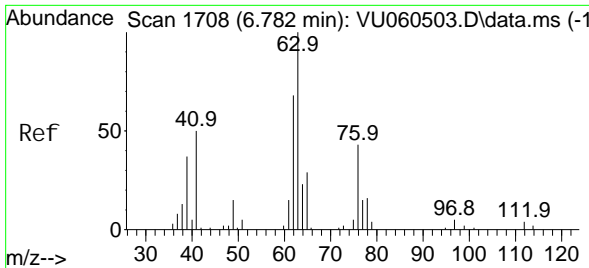
Tgt Ion: 95 Resp: 3343
 Ion Ratio Lower Upper
 95 100
 97 62.1 45.2 84.0
 132 93.1 67.2 124.8
 130 70.9 66.2 123.0



#35
 Methyl cycl ohexane
 Concen: 0.465 ug/L
 RT: 6.756 min Scan# 1700
 Delta R.T. -0.003 min
 Lab File: VU060501.D
 Acq: 22 Aug 2024 13:48

Tgt Ion: 83 Resp: 3775
 Ion Ratio Lower Upper
 83 100
 55 92.8 70.5 105.7
 98 49.7 38.5 57.7

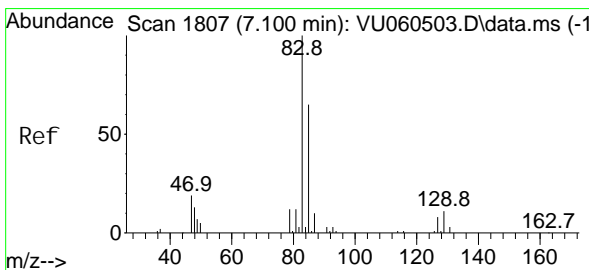
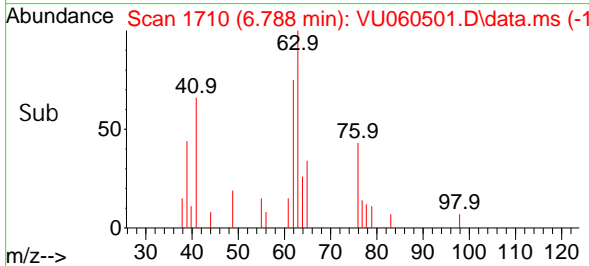
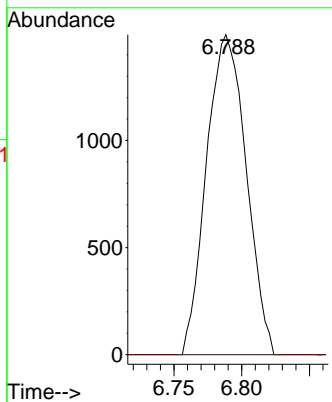
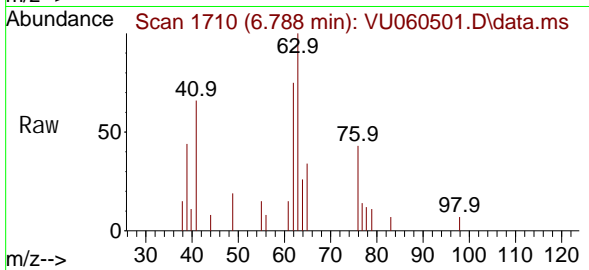




#37
 1, 2-Di chl oropropane
 Concen: 0.482 ug/L
 RT: 6.788 min Scan# 1710
 Del ta R. T. 0.006 min
 Lab File: VU060501.D
 Acq: 22 Aug 2024 13:48

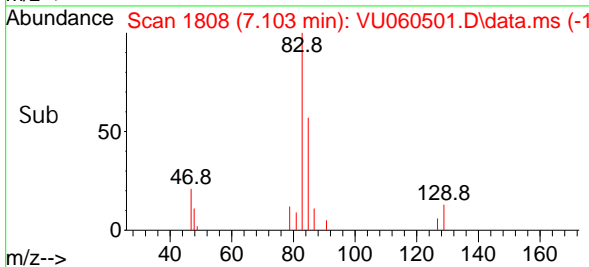
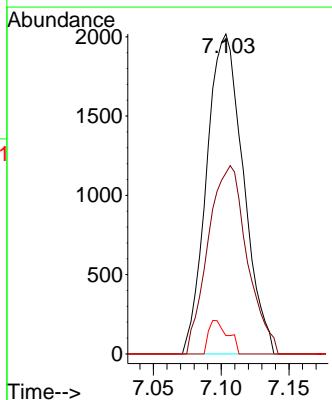
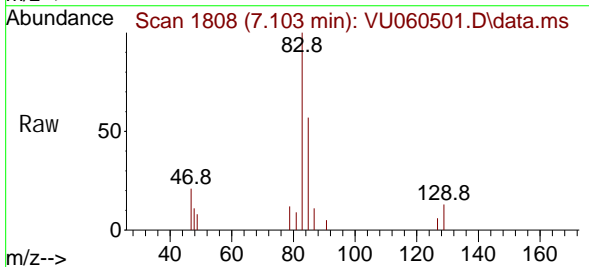
Instrument :
 MSVOA_U
 ClientSampleId :

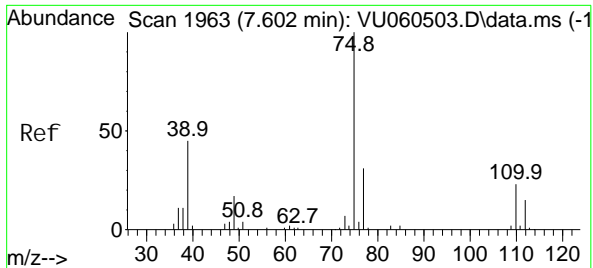
Tgt Ion: 63 Resp: 3046
 Ion Ratio Lower Upper
 63 100
 112 0.0 2.6 3.8#



#38
 Bromodi chl oromethane
 Concen: 0.486 ug/L
 RT: 7.103 min Scan# 1808
 Del ta R. T. 0.003 min
 Lab File: VU060501.D
 Acq: 22 Aug 2024 13:48

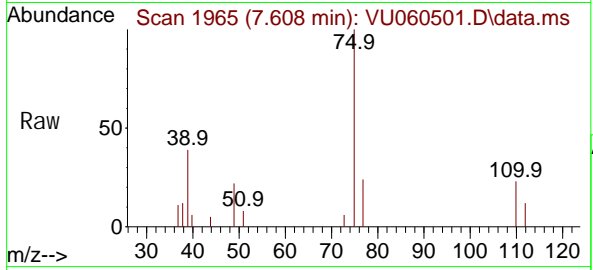
Tgt Ion: 83 Resp: 3795
 Ion Ratio Lower Upper
 83 100
 85 56.5 45.2 84.0
 127 5.7 6.5 9.7#



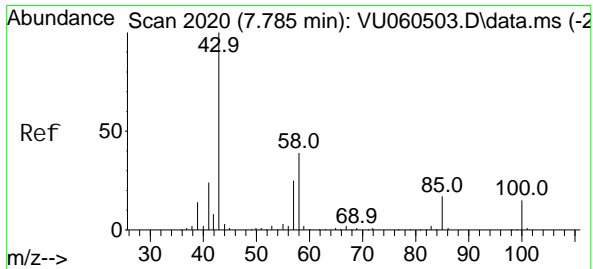
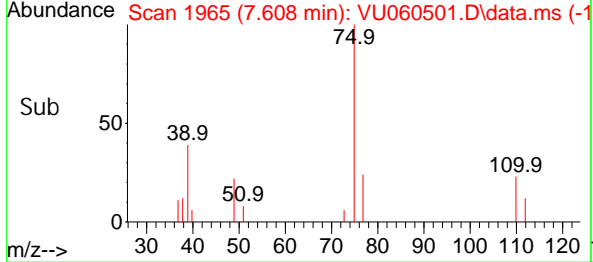
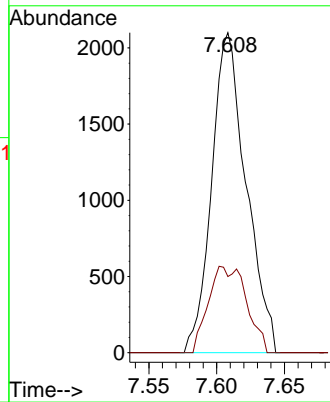


#39
 ci s-1, 3-Di chl oropropene
 Concen: 0.431 ug/L
 RT: 7.608 min Scan# 1963
 Delta R.T. 0.006 min
 Lab File: VU060501.D
 Acq: 22 Aug 2024 13:48

Instrument : MSVOA_U
 ClientSampleId :

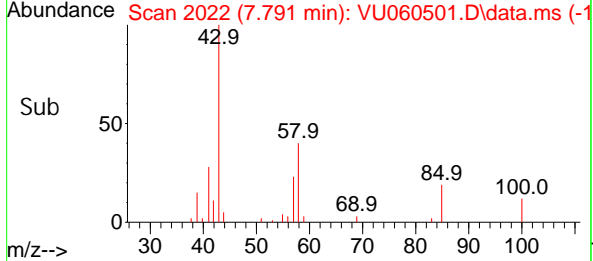
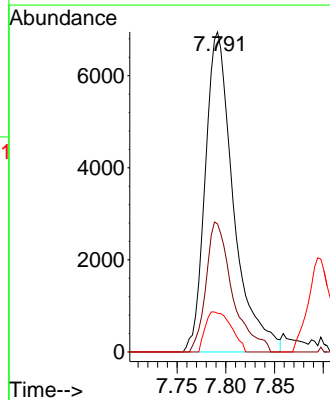
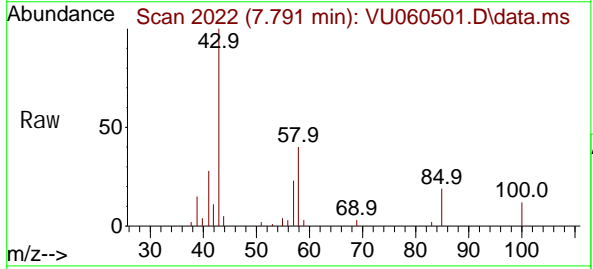


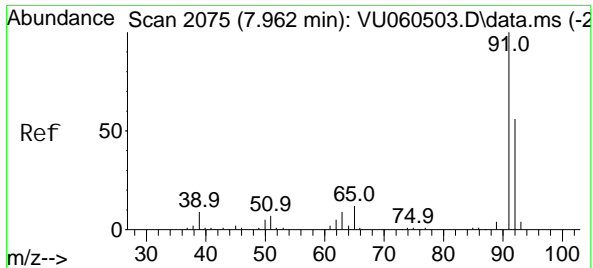
Tgt Ion: 75 Resp: 3704
 Ion Ratio Lower Upper
 75 100
 77 23.8 21.3 39.6



#40
 4-Methyl -2-pentanone
 Concen: 4.657 ug/L
 RT: 7.791 min Scan# 2022
 Delta R.T. 0.006 min
 Lab File: VU060501.D
 Acq: 22 Aug 2024 13:48

Tgt Ion: 43 Resp: 13991
 Ion Ratio Lower Upper
 43 100
 58 38.0 31.2 46.8
 100 11.5 11.5 17.3#

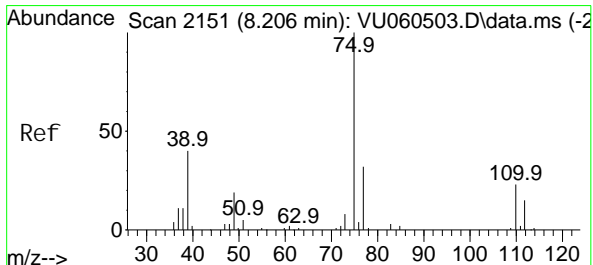
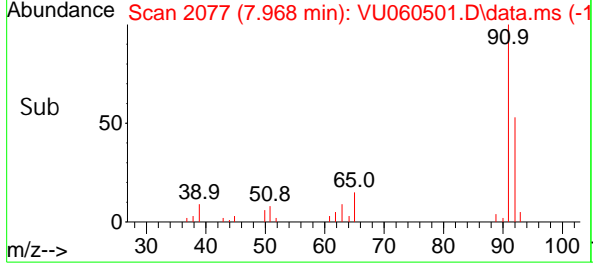
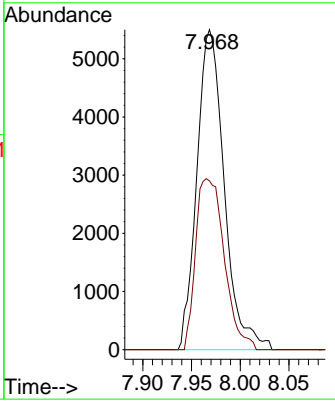
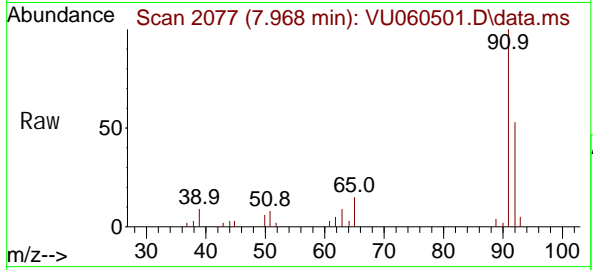




#42
 Tol uene
 Concen: 0.440 ug/L
 RT: 7.968 min Scan# 2077
 Delta R.T. 0.006 min
 Lab File: VU060501.D
 Acq: 22 Aug 2024 13:48

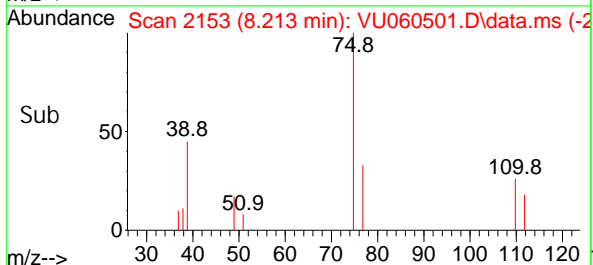
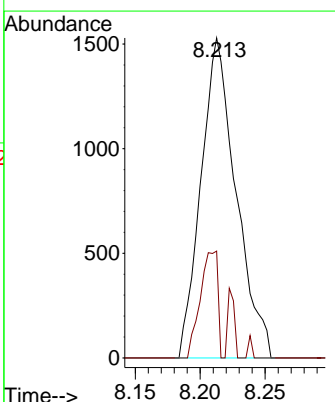
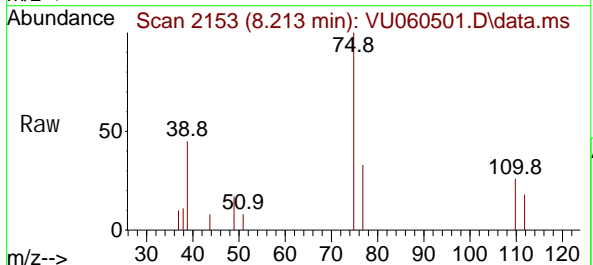
Instrument : MSVOA_U
 ClientSampleId :

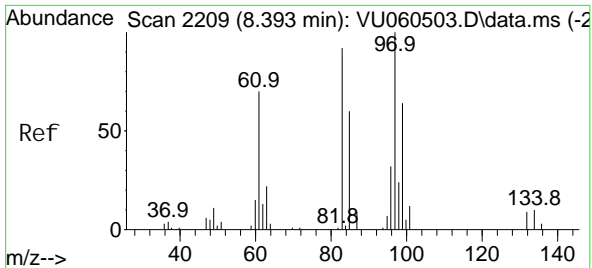
Tgt Ion: 91 Resp: 10759
 Ion Ratio Lower Upper
 91 100
 92 52.7 39.5 73.3



#44
 trans-1,3-Di chl oroprene
 Concen: 0.400 ug/L
 RT: 8.213 min Scan# 2153
 Delta R.T. 0.006 min
 Lab File: VU060501.D
 Acq: 22 Aug 2024 13:48

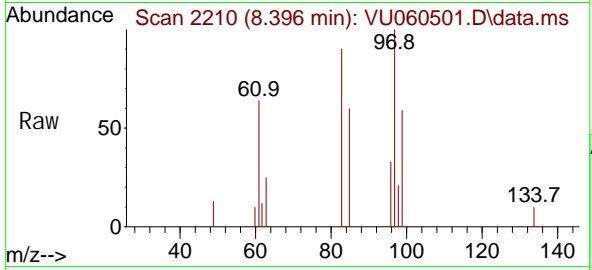
Tgt Ion: 75 Resp: 2860
 Ion Ratio Lower Upper
 75 100
 77 33.4 22.4 41.6





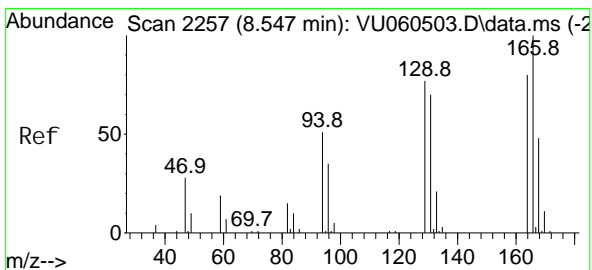
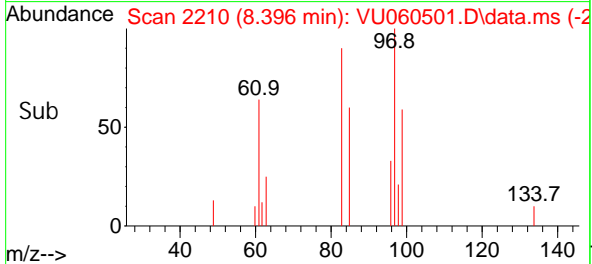
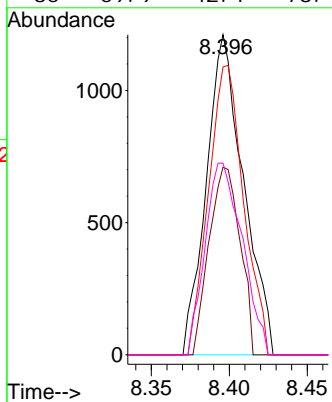
#45
 1, 1, 2-Tri chloroethane
 Concen: 0.425 ug/L
 RT: 8.396 min Scan# 2110
 Delta R.T. 0.003 min
 Lab File: VU060501.D
 Acq: 22 Aug 2024 13:48

Instrument : MSVOA_U
 ClientSampleId :

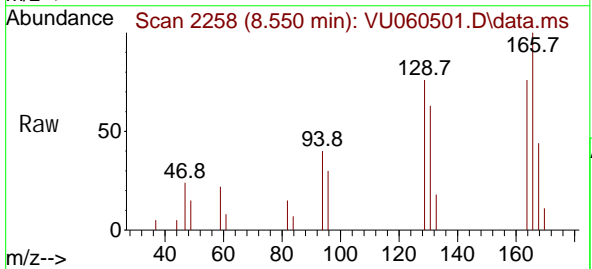


Tgt Ion: 97 Resp: 2006

Ion	Ratio	Lower	Upper
97	100		
99	58.6	44.7	82.9
83	89.9	64.1	119.1
85	59.9	42.1	78.1

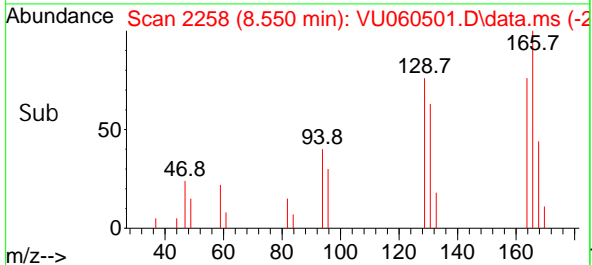
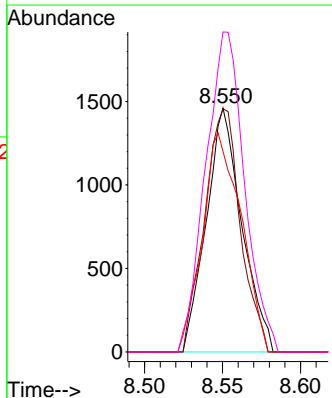


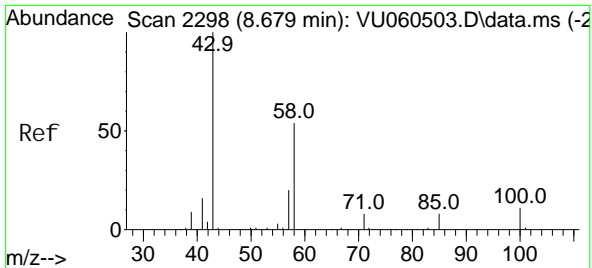
#47
 Tetrachloroethene
 Concen: 0.480 ug/L
 RT: 8.550 min Scan# 2258
 Delta R.T. 0.003 min
 Lab File: VU060501.D
 Acq: 22 Aug 2024 13:48



Tgt Ion: 164 Resp: 2312

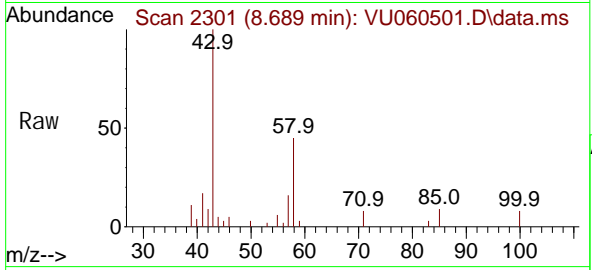
Ion	Ratio	Lower	Upper
164	100		
129	99.7	67.5	125.4
131	82.3	61.4	114.0
166	131.2	87.8	163.2



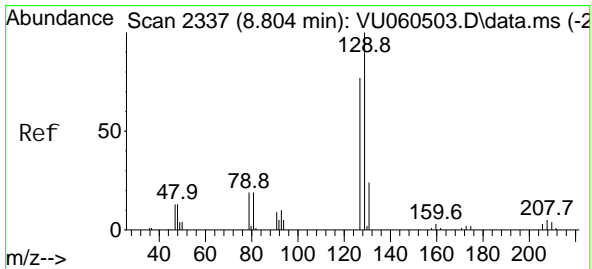
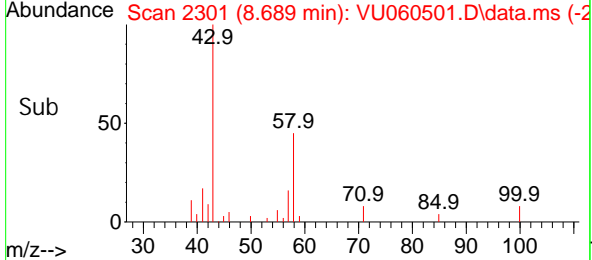
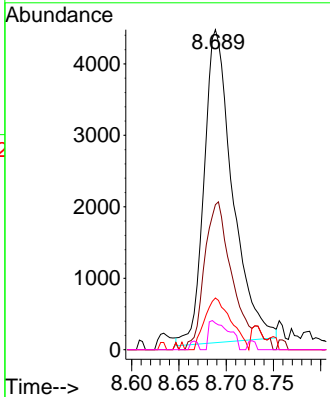


#48
 2-Hexanone
 Concen: 4.066 ug/L
 RT: 8.689 min Scan# 21
 Delta R.T. 0.010 min
 Lab File: VU060501.D
 Acq: 22 Aug 2024 13:48

Instrument :
 MSVOA_U
 ClientSampleId :

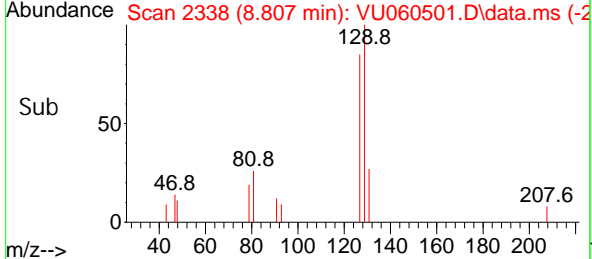
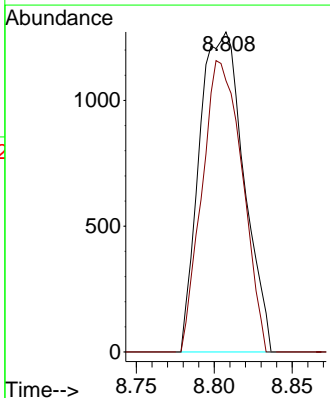
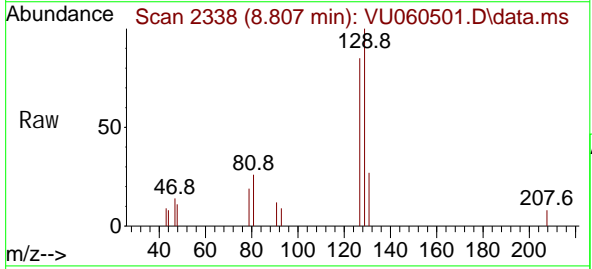


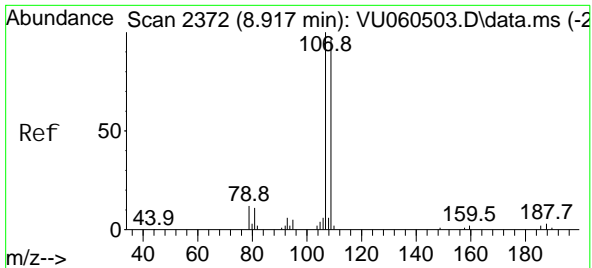
Tgt Ion: 43 Resp: 9163
 Ion Ratio Lower Upper
 43 100
 58 47.8 43.0 64.4
 57 15.2 16.4 24.6#
 100 6.5 8.6 13.0#



#49
 Di bromochloromethane
 Concen: 0.499 ug/L
 RT: 8.807 min Scan# 2338
 Delta R.T. 0.003 min
 Lab File: VU060501.D
 Acq: 22 Aug 2024 13:48

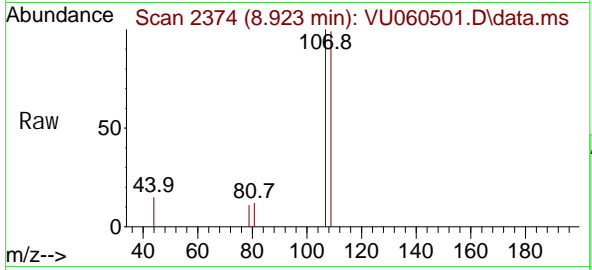
Tgt Ion: 129 Resp: 2520
 Ion Ratio Lower Upper
 129 100
 127 84.8 54.0 100.4





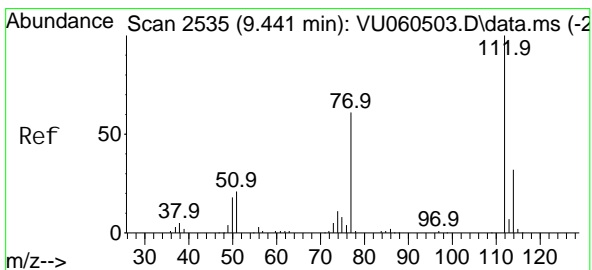
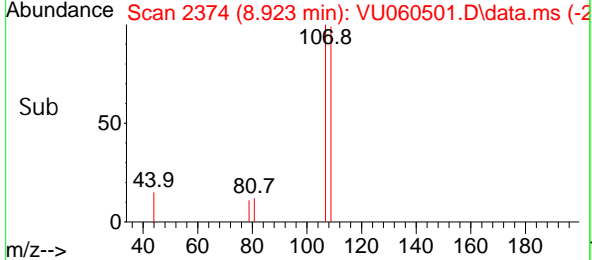
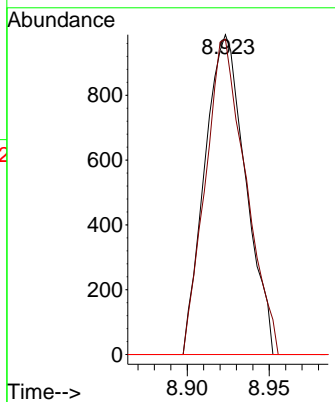
#50
 1, 2-Di bromoethane
 Concen: 0.404 ug/L
 RT: 8.923 min Scan# 21
 Delta R.T. 0.006 min
 Lab File: VU060501.D
 Acq: 22 Aug 2024 13:48

Instrument :
 MSVOA_U
 ClientSampleId :



Tgt Ion: 107 Resp: 1702

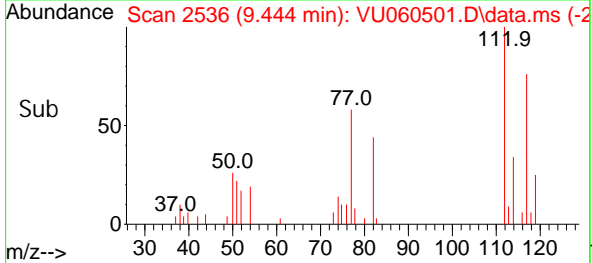
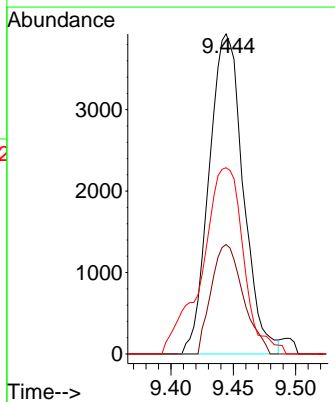
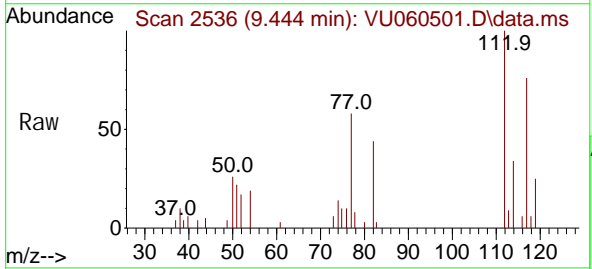
Ion	Ratio	Lower	Upper
107	100		
109	98.6	67.2	124.8
188	0.0	2.6	3.8#

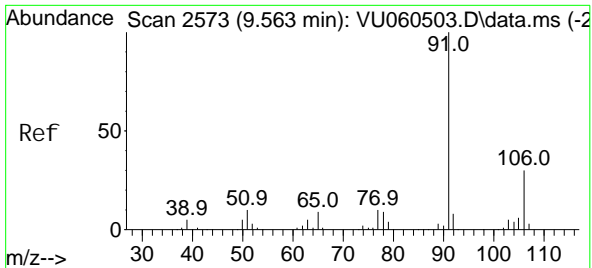


#51
 Chlorobenzene
 Concen: 0.457 ug/L
 RT: 9.444 min Scan# 2536
 Delta R.T. 0.003 min
 Lab File: VU060501.D
 Acq: 22 Aug 2024 13:48

Tgt Ion: 112 Resp: 7490

Ion	Ratio	Lower	Upper
112	100		
114	31.3	22.2	41.2
77	60.6	49.3	73.9

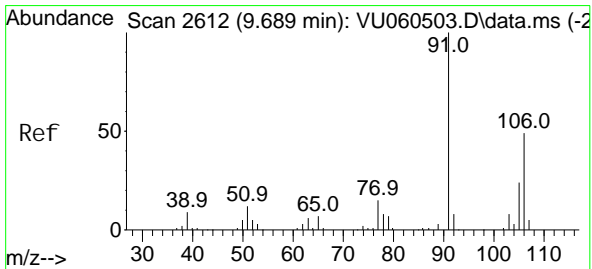
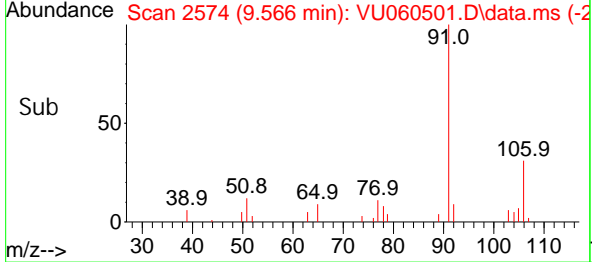
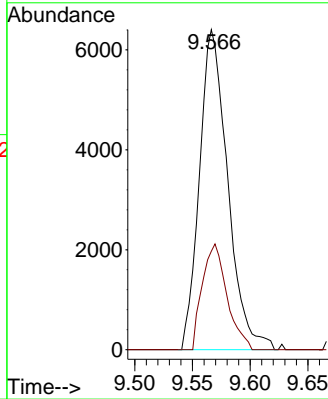
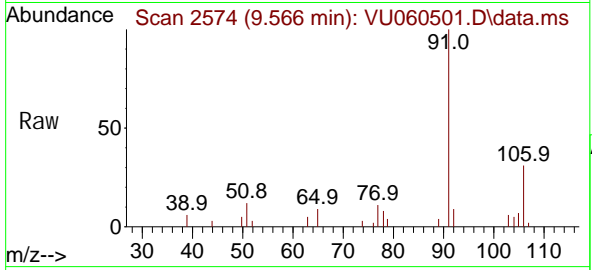




#52
 Ethyl benzene
 Concen: 0.421 ug/L
 RT: 9.566 min Scan# 2574
 Delta R.T. 0.003 min
 Lab File: VU060501.D
 Acq: 22 Aug 2024 13:48

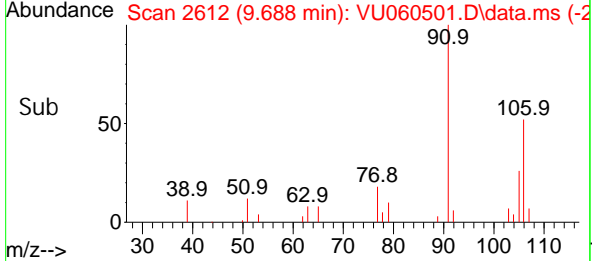
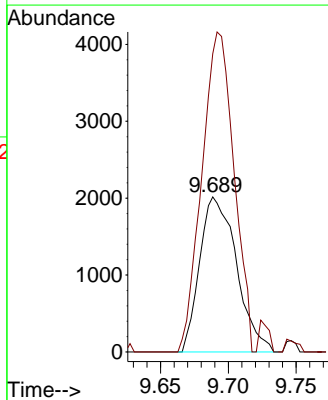
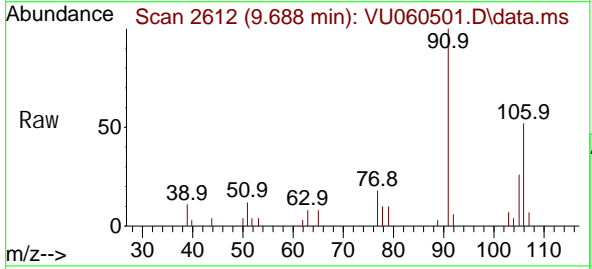
Instrument : MSVOA_U
 ClientSampleId :

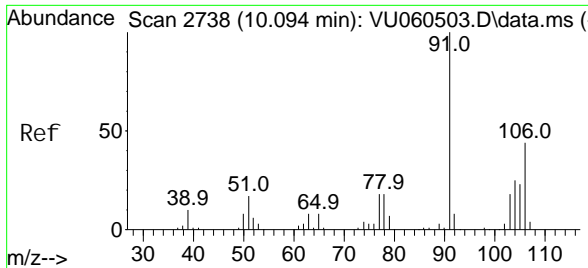
Tgt Ion: 91 Resp: 10900
 Ion Ratio Lower Upper
 91 100
 106 30.8 21.3 39.6



#53
 m, p-Xyl ene
 Concen: 0.388 ug/L
 RT: 9.688 min Scan# 2612
 Delta R.T. -0.000 min
 Lab File: VU060501.D
 Acq: 22 Aug 2024 13:48

Tgt Ion: 106 Resp: 3803
 Ion Ratio Lower Upper
 106 100
 91 192.4 144.5 268.4

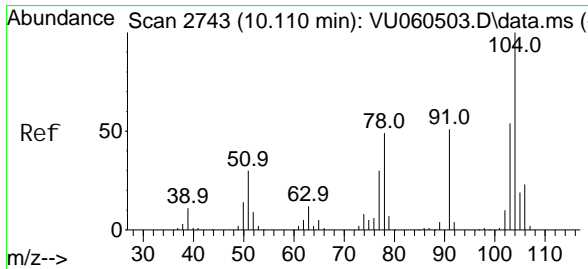
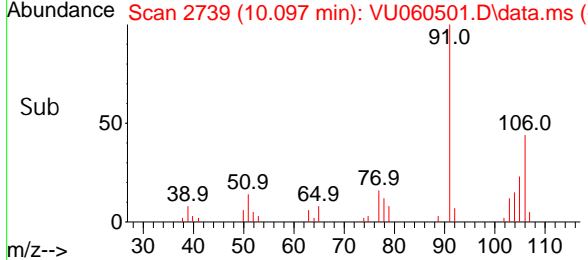
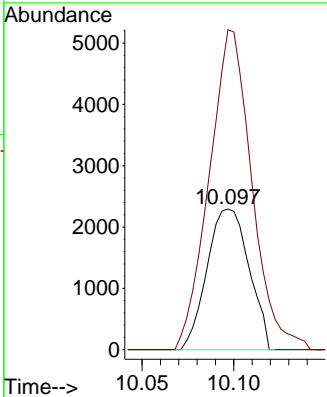
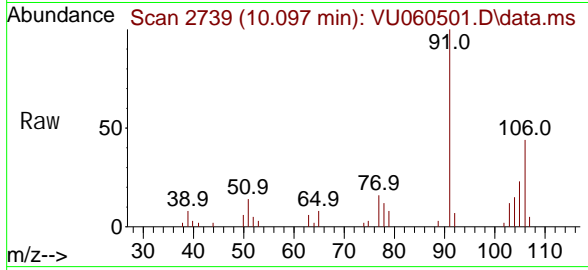




#54
 o-Xyl ene
 Concen: 0.391 ug/L
 RT: 10.097 min Scan# 2738
 Delta R.T. 0.003 min
 Lab File: VU060501.D
 Acq: 22 Aug 2024 13:48

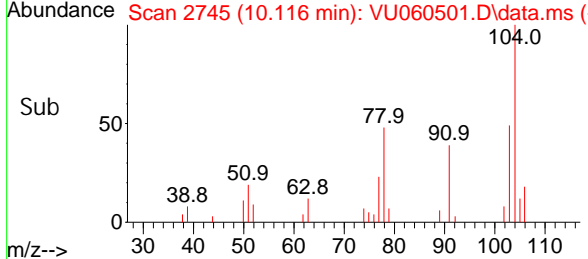
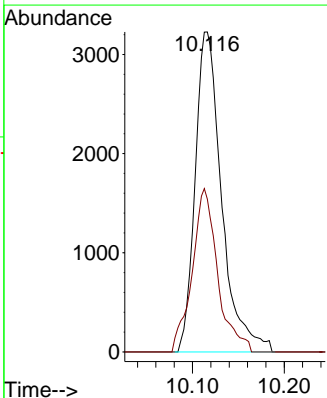
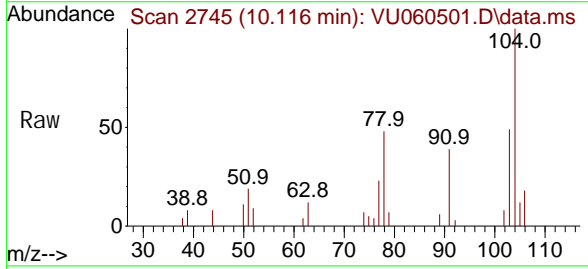
Instrument : MSVOA_U
 ClientSampleId :

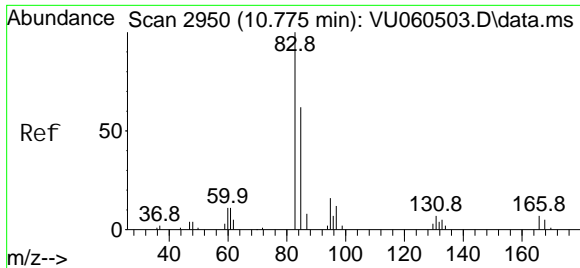
Tgt Ion: 106 Resp: 3658
 Ion Ratio Lower Upper
 106 100
 91 227.5 158.0 293.4



#55
 Styrene
 Concen: 0.401 ug/L
 RT: 10.116 min Scan# 2745
 Delta R.T. 0.006 min
 Lab File: VU060501.D
 Acq: 22 Aug 2024 13:48

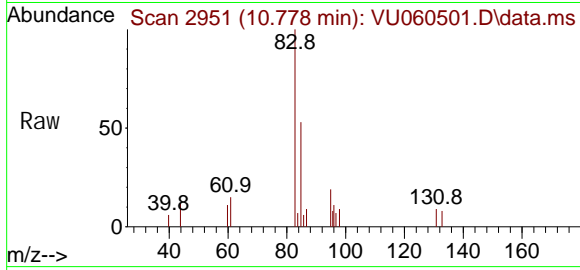
Tgt Ion: 104 Resp: 6462
 Ion Ratio Lower Upper
 104 100
 78 47.8 34.4 63.8





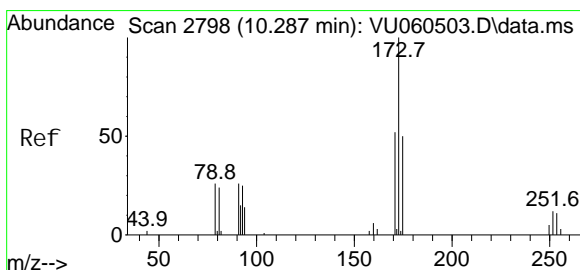
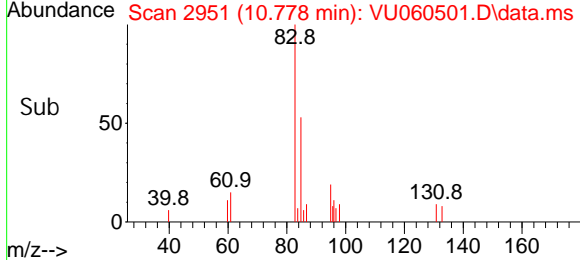
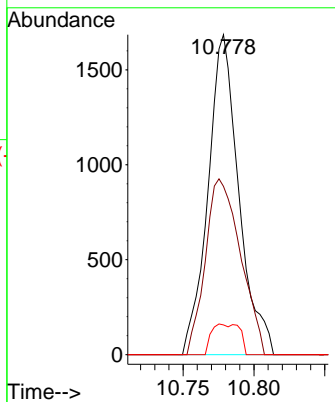
#57
 1, 1, 2, 2-Tetrachloroethane
 Concen: 0.437 ug/L
 RT: 10.778 min Scan# 2950
 Delta R.T. 0.003 min
 Lab File: VU060501.D
 Acq: 22 Aug 2024 13:48

Instrument : MSVOA_U
 ClientSampleId :



Tgt Ion: 83 Resp: 2548

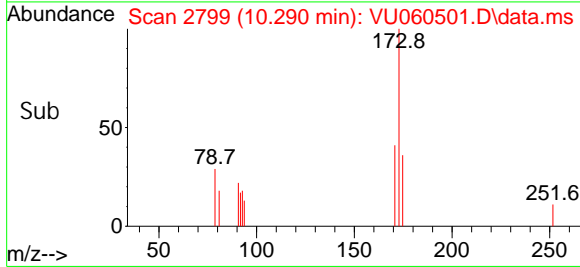
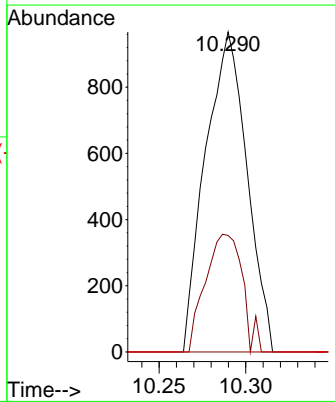
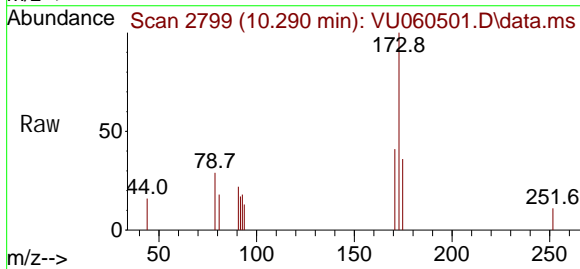
Ion	Ratio	Lower	Upper
83	100		
85	58.9	43.8	81.3
131	9.3	6.8	10.2

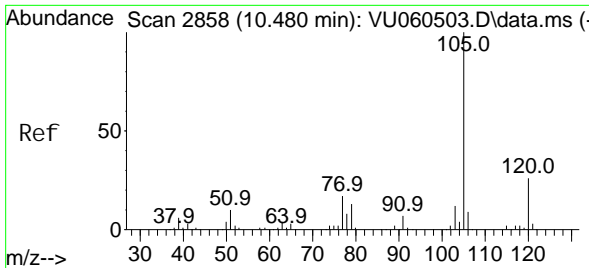


#59
 Bromoform
 Concen: 0.629 ug/L
 RT: 10.290 min Scan# 2799
 Delta R.T. 0.003 min
 Lab File: VU060501.D
 Acq: 22 Aug 2024 13:48

Tgt Ion: 173 Resp: 1608

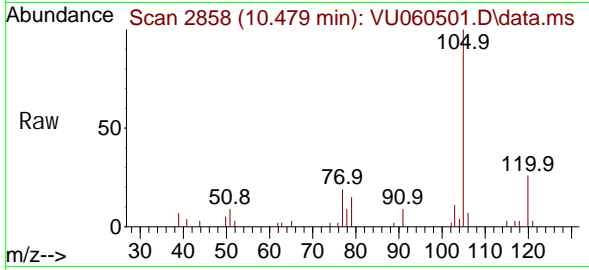
Ion	Ratio	Lower	Upper
173	100		
175	32.8	36.9	55.3#
254	0.0	8.4	12.6#



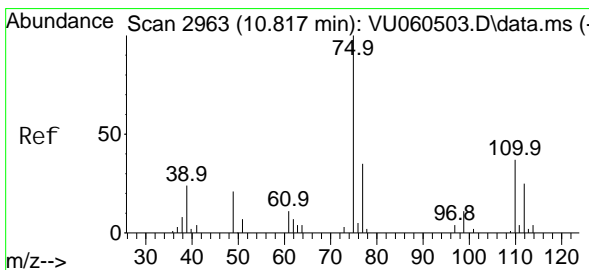
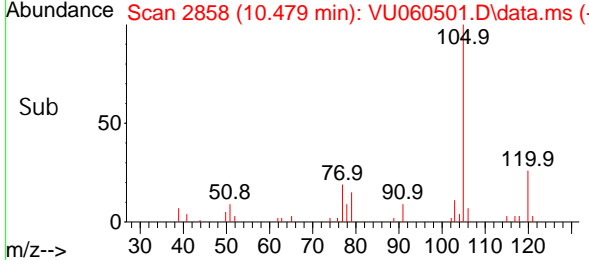
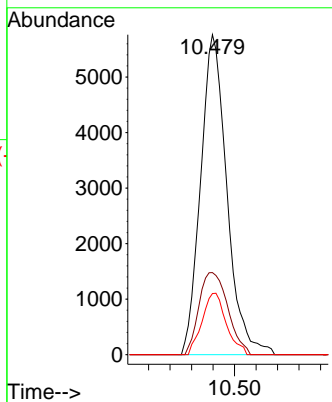


#60
 Isopropyl benzene
 Concen: 0.479 ug/L
 RT: 10.479 min Scan# 2858
 Delta R.T. -0.000 min
 Lab File: VU060501.D
 Acq: 22 Aug 2024 13:48

Instrument : MSVOA_U
 ClientSampleId :

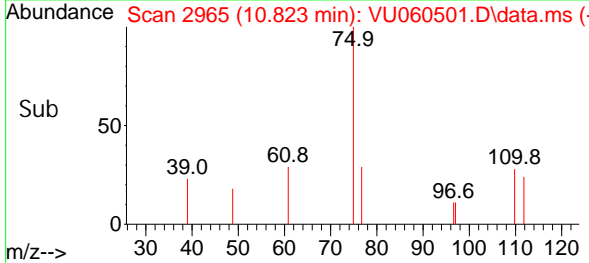
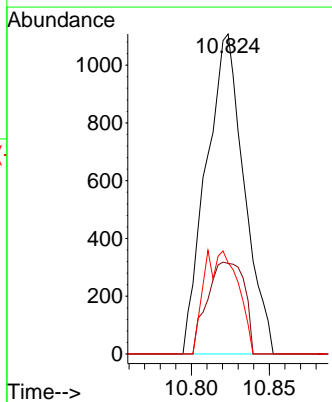
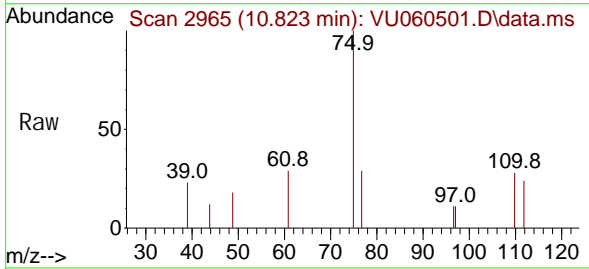


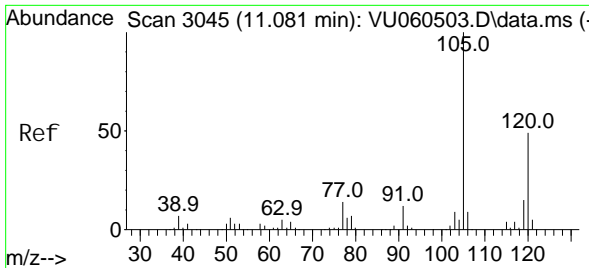
Tgt Ion: 105 Resp: 9778
 Ion Ratio Lower Upper
 105 100
 120 28.2 20.6 31.0
 77 17.6 13.9 20.9



#61
 1,2,3-Tri chloropropane
 Concen: 0.579 ug/L
 RT: 10.823 min Scan# 2965
 Delta R.T. 0.006 min
 Lab File: VU060501.D
 Acq: 22 Aug 2024 13:48

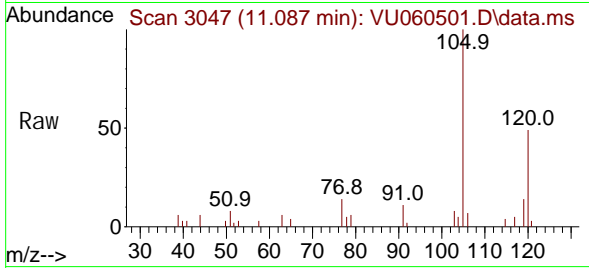
Tgt Ion: 75 Resp: 1869
 Ion Ratio Lower Upper
 75 100
 110 28.0 29.1 43.7#
 77 29.1 27.5 41.3



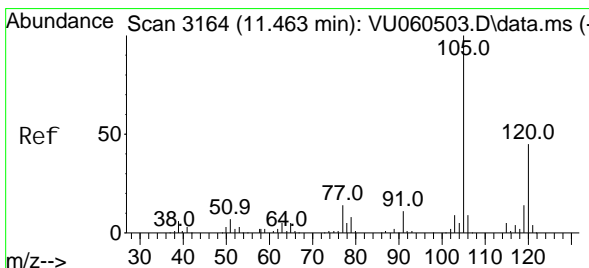
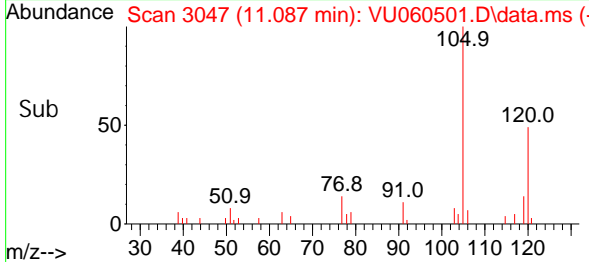
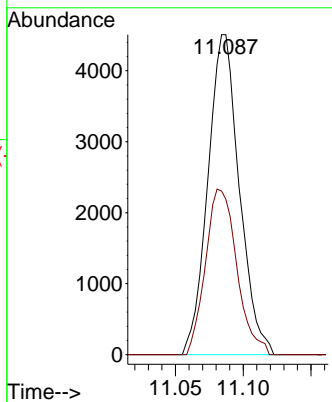


#62
 1, 3, 5-Tri methyl benzene
 Concen: 0.463 ug/L
 RT: 11.087 min Scan# 3045
 Delta R.T. 0.006 min
 Lab File: VU060501.D
 Acq: 22 Aug 2024 13: 48

Instrument : MSVOA_U
 ClientSampleId :

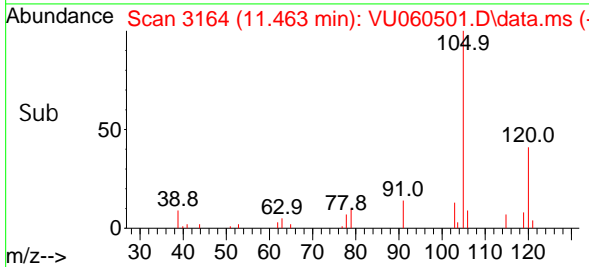
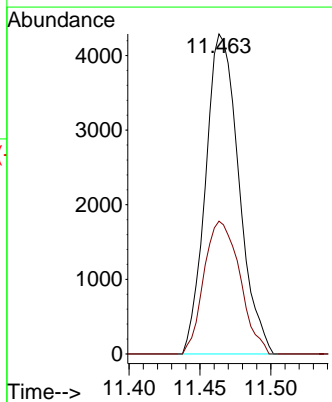
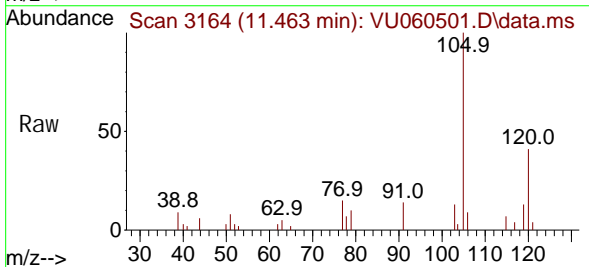


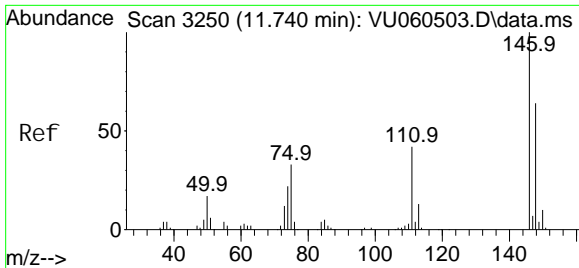
Tgt Ion: 105 Resp: 7285
 Ion Ratio Lower Upper
 105 100
 120 51.5 39.4 59.0



#63
 1, 2, 4-Tri methyl benzene
 Concen: 0.431 ug/L
 RT: 11.463 min Scan# 3164
 Delta R.T. -0.000 min
 Lab File: VU060501.D
 Acq: 22 Aug 2024 13: 48

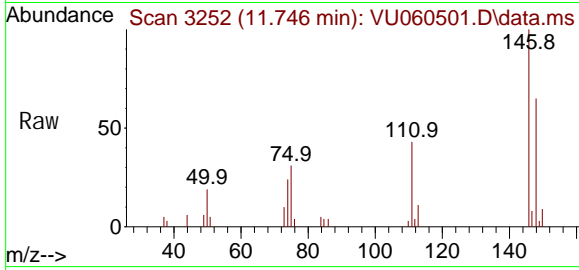
Tgt Ion: 105 Resp: 7007
 Ion Ratio Lower Upper
 105 100
 120 44.7 36.0 54.0



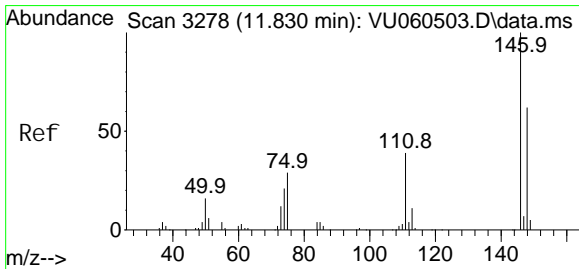
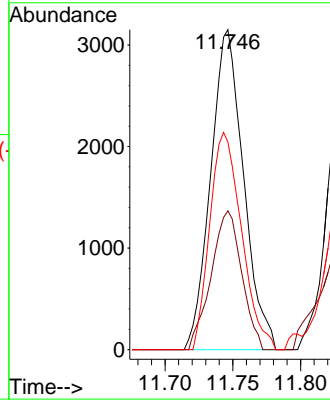
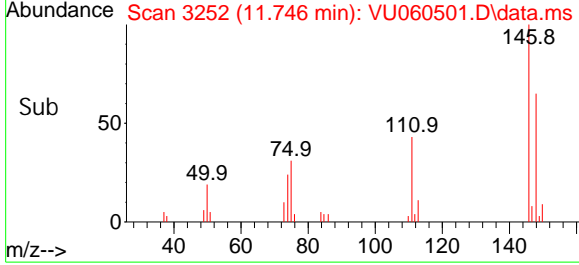


#64
 1, 3-Di chl orobenzene
 Concen: 0.483 ug/L
 RT: 11.746 min Scan# 31
 Delta R.T. 0.006 min
 Lab File: VU060501.D
 Acq: 22 Aug 2024 13:48

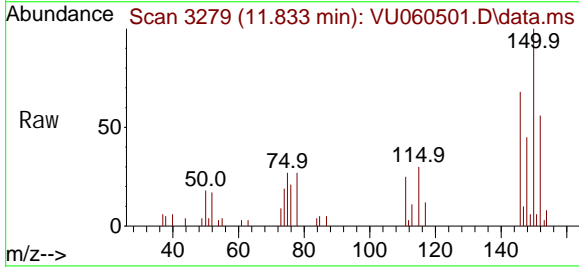
Instrument :
 MSVOA_U
 ClientSampleId :



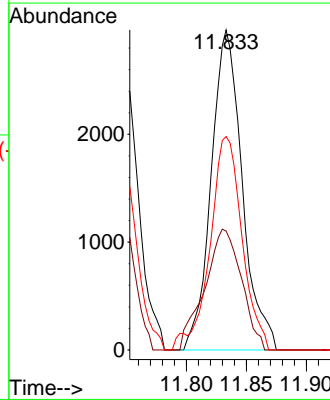
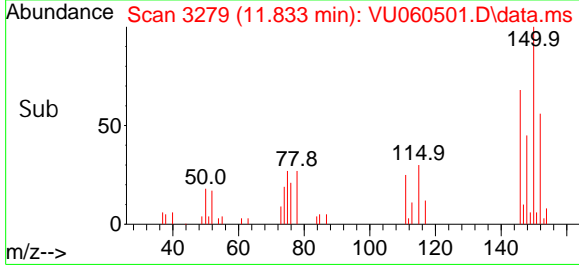
Tgt Ion: 146 Resp: 5304
 Ion Ratio Lower Upper
 146 100
 111 43.4 29.5 54.9
 148 64.9 45.0 83.6

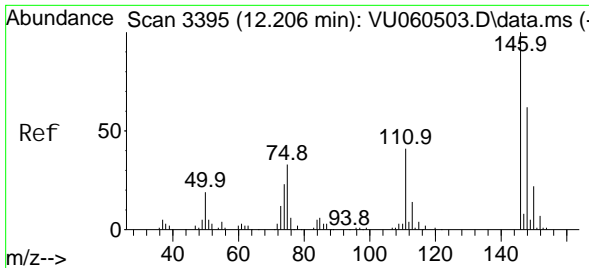


#65
 1, 4-Di chl orobenzene
 Concen: 0.485 ug/L
 RT: 11.833 min Scan# 3279
 Delta R.T. 0.003 min
 Lab File: VU060501.D
 Acq: 22 Aug 2024 13:48



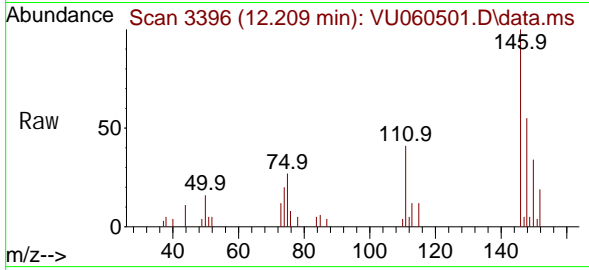
Tgt Ion: 146 Resp: 5327
 Ion Ratio Lower Upper
 146 100
 111 37.2 27.9 51.7
 148 66.7 43.7 81.1



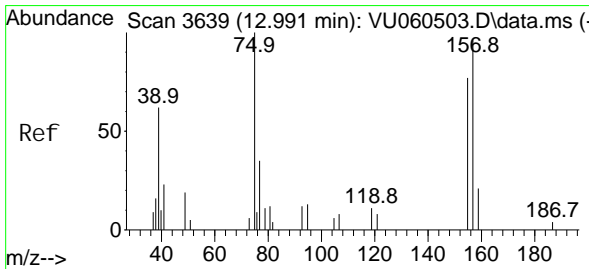
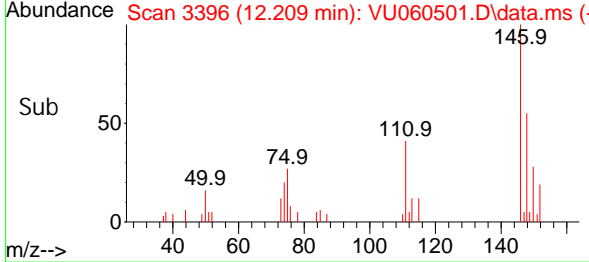
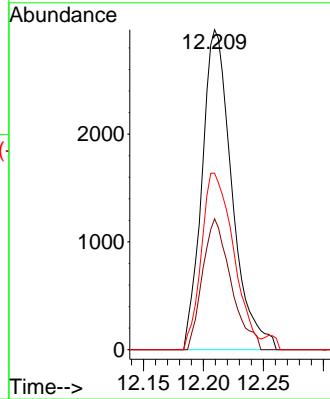


#67
 1, 2-Di chl orobenzene
 Concen: 0.531 ug/L
 RT: 12.209 min Scan# 31
 Del ta R. T. 0.003 min
 Lab File: VU060501.D
 Acq: 22 Aug 2024 13: 48

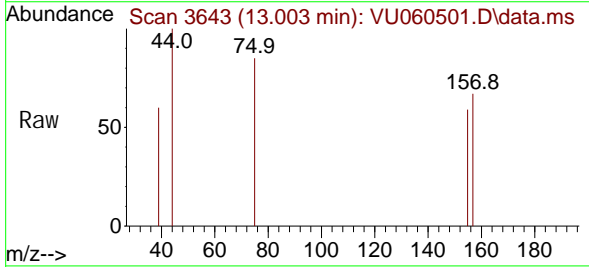
Instrument :
 MSVOA_U
 ClientSampleId :



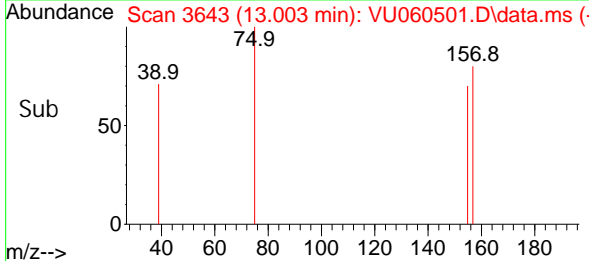
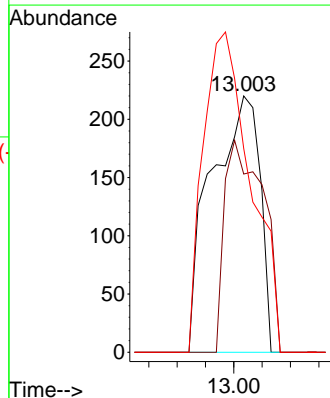
Tgt Ion: 146 Resp: 5159
 Ion Ratio Lower Upper
 146 100
 111 40.9 32.7 49.1
 148 60.1 49.4 74.0

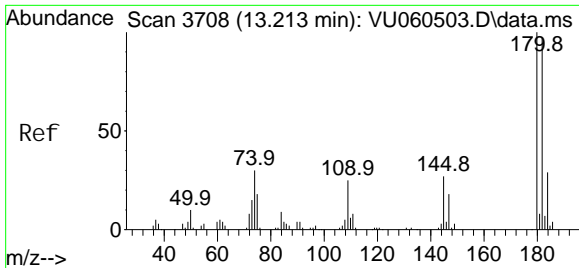


#68
 1, 2-Di bromo-3- chl oropropane
 Concen: 0.428 ug/L
 RT: 13.003 min Scan# 3643
 Del ta R. T. 0.013 min
 Lab File: VU060501.D
 Acq: 22 Aug 2024 13: 48



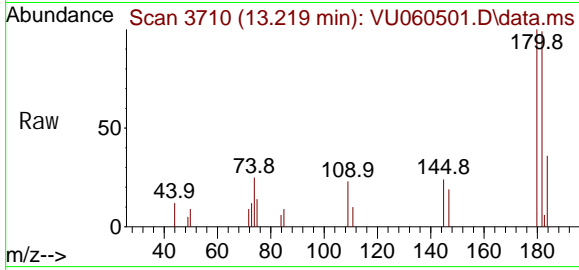
Tgt Ion: 75 Resp: 261
 Ion Ratio Lower Upper
 75 100
 155 69.5 61.3 91.9
 157 79.5 76.6 115.0



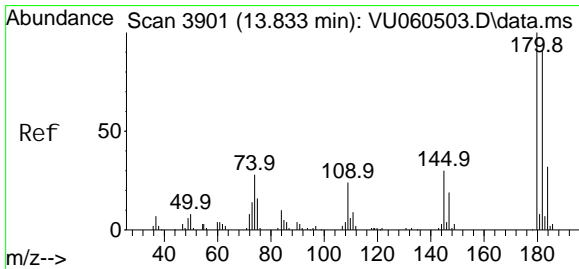
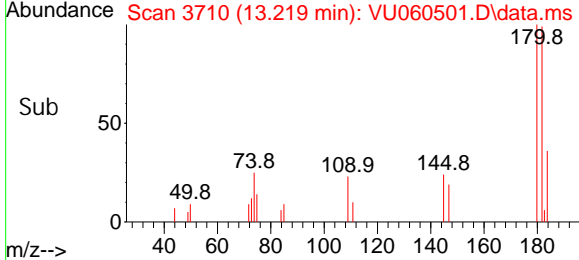
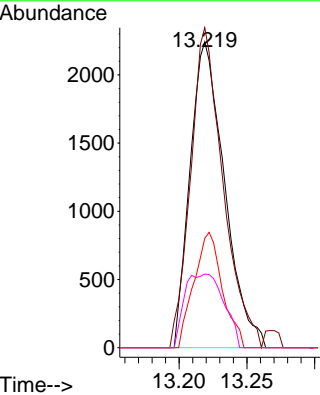


#69
 1, 3, 5-Tri chlorobenzene
 Concen: 0.507 ug/L
 RT: 13.219 min Scan# 3710
 Delta R.T. 0.006 min
 Lab File: VU060501.D
 Acq: 22 Aug 2024 13:48

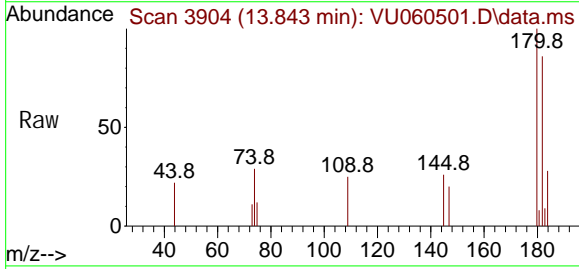
Instrument : MSVOA_U
 ClientSampleId :



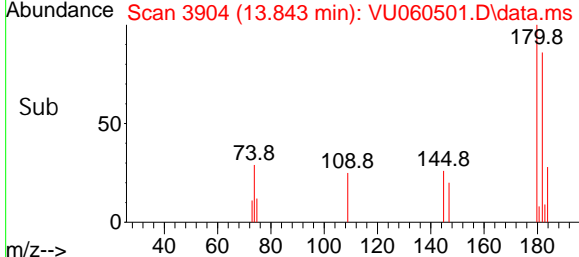
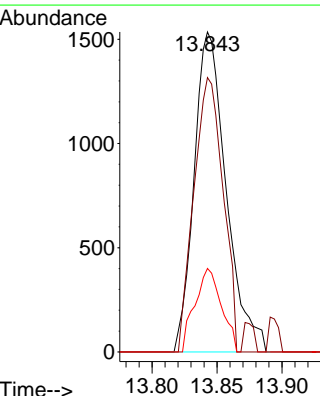
Tgt Ion: 180 Resp: 3959
 Ion Ratio Lower Upper
 180 100
 182 98.4 76.9 115.3
 184 31.1 24.2 36.2
 145 27.4 22.4 33.6

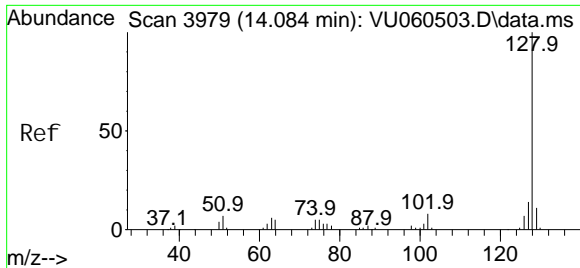


#70
 1, 2, 4-tri chlorobenzene
 Concen: 0.432 ug/L
 RT: 13.843 min Scan# 3904
 Delta R.T. 0.010 min
 Lab File: VU060501.D
 Acq: 22 Aug 2024 13:48



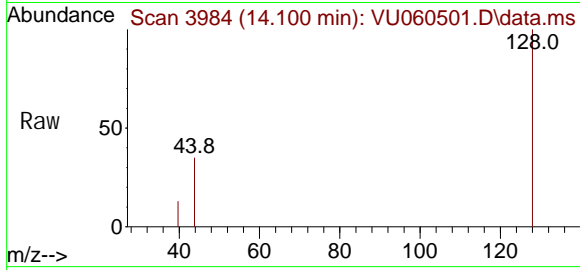
Tgt Ion: 180 Resp: 2635
 Ion Ratio Lower Upper
 180 100
 182 78.0 75.0 112.6
 145 21.6 23.2 34.8#



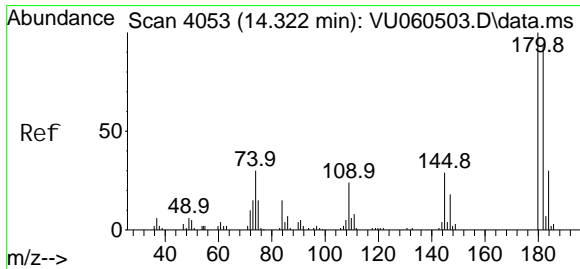
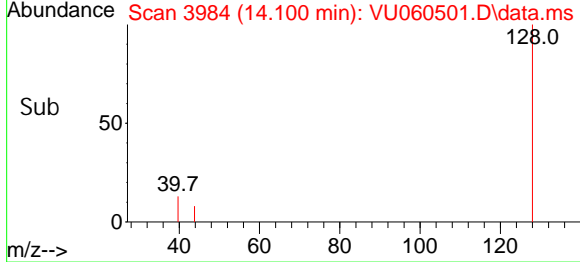
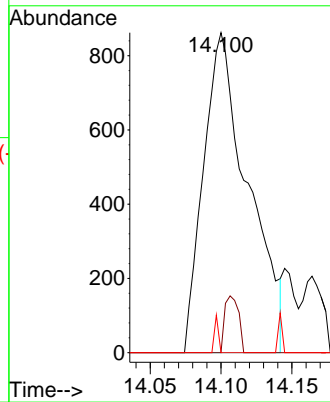


#71
 Naphthalene
 Concen: 0.220 ug/L
 RT: 14.100 min Scan# 3984
 Delta R.T. 0.016 min
 Lab File: VU060501.D
 Acq: 22 Aug 2024 13:48

Instrument : MSVOA_U
 ClientSampleId :



Tgt Ion: 128 Resp: 1882
 Ion Ratio Lower Upper
 128 100
 129 5.5 8.3 12.5#
 127 1.0 10.9 16.3#



#72
 1,2,3-Trichlorobenzene
 Concen: 0.380 ug/L
 RT: 14.331 min Scan# 4056
 Delta R.T. 0.010 min
 Lab File: VU060501.D
 Acq: 22 Aug 2024 13:48

Tgt Ion: 180 Resp: 2070
 Ion Ratio Lower Upper
 180 100
 182 87.1 75.6 113.4
 145 18.5 24.0 36.0#

