

Data Path : Z:\voasrv\HPCHEM1\MSVOA_U\Data\VU082324\
 Data File : VU060539.D
 Acq On : 24 Aug 2024 03:14
 Operator : MD/SY
 Sample : VSTDCCC005EC
 Misc : 25.0mL/MSVOA_U/WATER
 ALS Vial : 35 Sample Multiplier: 1

Instrument :
 MSVOA_U
ClientSampleId :

Quant Time: Aug 24 04:41:10 2024
 Quant Method : Z:\voasrv\HPCHEM1\MSVOA_U\Method\SFAMUTR082324WMA.M
 Quant Title : TRACE VOA SFAM1.0
 QLast Update : Sat Aug 24 01:46:38 2024
 Response via : Initial Calibration

Compound	R.T.	QI on	Response	Conc	Units	Dev(Min)
Internal Standards						
1) 1,4-Difluorobenzene	6.242	114	100519	5.000	ug/L	0.00
28) Chlorobenzene-d5	9.409	117	101419	5.000	ug/L	0.00
58) 1,4-Dichlorobenzene-d4	11.804	152	54034	5.000	ug/L	0.00
System Monitoring Compounds						
4) Vinyl chloride-d3	1.596	65	18414	4.148	ug/L	0.00
Spike Amount	5.000	Range	40 - 130	Recovery	=	83.000%
7) Chloroethane-d5	1.911	69	25636	3.811	ug/L	0.00
Spike Amount	5.000	Range	65 - 130	Recovery	=	76.200%
11) 1,1-Dichloroethene-d2	2.560	65	14713	5.623	ug/L	0.00
Spike Amount	5.000	Range	60 - 125	Recovery	=	112.400%
20) 2-Butanone-d5	4.631	46	79125	51.827	ug/L	0.00
Spike Amount	50.000	Range	40 - 130	Recovery	=	103.660%
24) Chloroform-d	5.055	84	63770	5.038	ug/L	0.00
Spike Amount	5.000	Range	70 - 125	Recovery	=	100.800%
26) 1,2-Dichloroethane-d4	5.695	65	33086	5.009	ug/L	0.00
Spike Amount	5.000	Range	70 - 130	Recovery	=	100.200%
32) Benzene-d6	5.718	84	110716	4.992	ug/L	0.00
Spike Amount	5.000	Range	70 - 125	Recovery	=	99.800%
36) 1,2-Dichloropropane-d6	6.682	67	36702	5.129	ug/L	0.00
Spike Amount	5.000	Range	60 - 140	Recovery	=	102.600%
41) Toluene-d8	7.891	98	104173	5.007	ug/L	0.00
Spike Amount	5.000	Range	70 - 130	Recovery	=	100.200%
43) trans-1,3-Dichloroprop...	8.174	79	11948	4.666	ug/L	0.00
Spike Amount	5.000	Range	55 - 130	Recovery	=	93.400%
46) 2-Hexanone-d5	8.628	63	59285	48.359	ug/L	0.00
Spike Amount	50.000	Range	45 - 130	Recovery	=	96.720%
56) 1,1,2,2-Tetrachloroeth...	10.747	84	30945	4.860	ug/L	0.00
Spike Amount	5.000	Range	65 - 120	Recovery	=	97.200%
66) 1,2-Dichlorobenzene-d4	12.184	152	39273	4.929	ug/L	0.00
Spike Amount	5.000	Range	80 - 120	Recovery	=	98.600%
Target Compounds						
2) Dichlorodifluoromethane	1.384	85	54746	4.799	ug/L	97
3) Chloromethane	1.515	50	43113	4.362	ug/L	98
5) Vinyl chloride	1.602	62	43371	4.457	ug/L	97
6) Bromomethane	1.856	94	29920	3.055	ug/L	98
8) Chloroethane	1.930	64	34807	3.920	ug/L	99
9) Trichlorofluoromethane	2.133	101	101528	4.799	ug/L	100
10) 1,1,2-Trichloro-1,2,2-...	2.576	101	50535	5.646	ug/L	98
12) 1,1-Dichloroethene	2.573	96	48571	5.896	ug/L	96
13) Acetone	2.647	43	62469	48.899	ug/L	97
14) Carbon disulfide	2.785	76	110742	4.142	ug/L	100
15) Methyl Acetate	2.956	43	12471	4.774	ug/L #	88
16) Methylene chloride	3.039	84	36771	4.595	ug/L	92
17) Methyl tert-butyl Ether	3.358	73	82075	4.909	ug/L	97
18) trans-1,2-Dichloroethene	3.348	96	33674	4.695	ug/L	95
19) 1,1-Dichloroethane	3.859	63	72135	4.963	ug/L	96
21) 2-Butanone	4.711	43	88554	50.688	ug/L	99
22) cis-1,2-Dichloroethene	4.657	96	39215	4.907	ug/L	99
23) Bromochloromethane	4.969	128	18523	5.100	ug/L	93
25) Chloroform	5.078	83	74513	4.844	ug/L	99

Data Path : Z:\voasrv\HPCHEM1\MSVOA_U\Data\VU082324\
 Data File : VU060539.D
 Acq On : 24 Aug 2024 03:14
 Operator : MD/SY
 Sample : VSTDCCC005EC
 Misc : 25.0mL/MSVOA_U/WATER
 ALS Vial : 35 Sample Multiplier: 1

Instrument :
 MSVOA_U
ClientSampleId :

Quant Time: Aug 24 04:41:10 2024
 Quant Method : Z:\voasrv\HPCHEM1\MSVOA_U\Method\SFAMUTR082324WMA.M
 Quant Title : TRACE VOA SFAM1.0
 QLast Update : Sat Aug 24 01:46:38 2024
 Response via : Initial Calibration

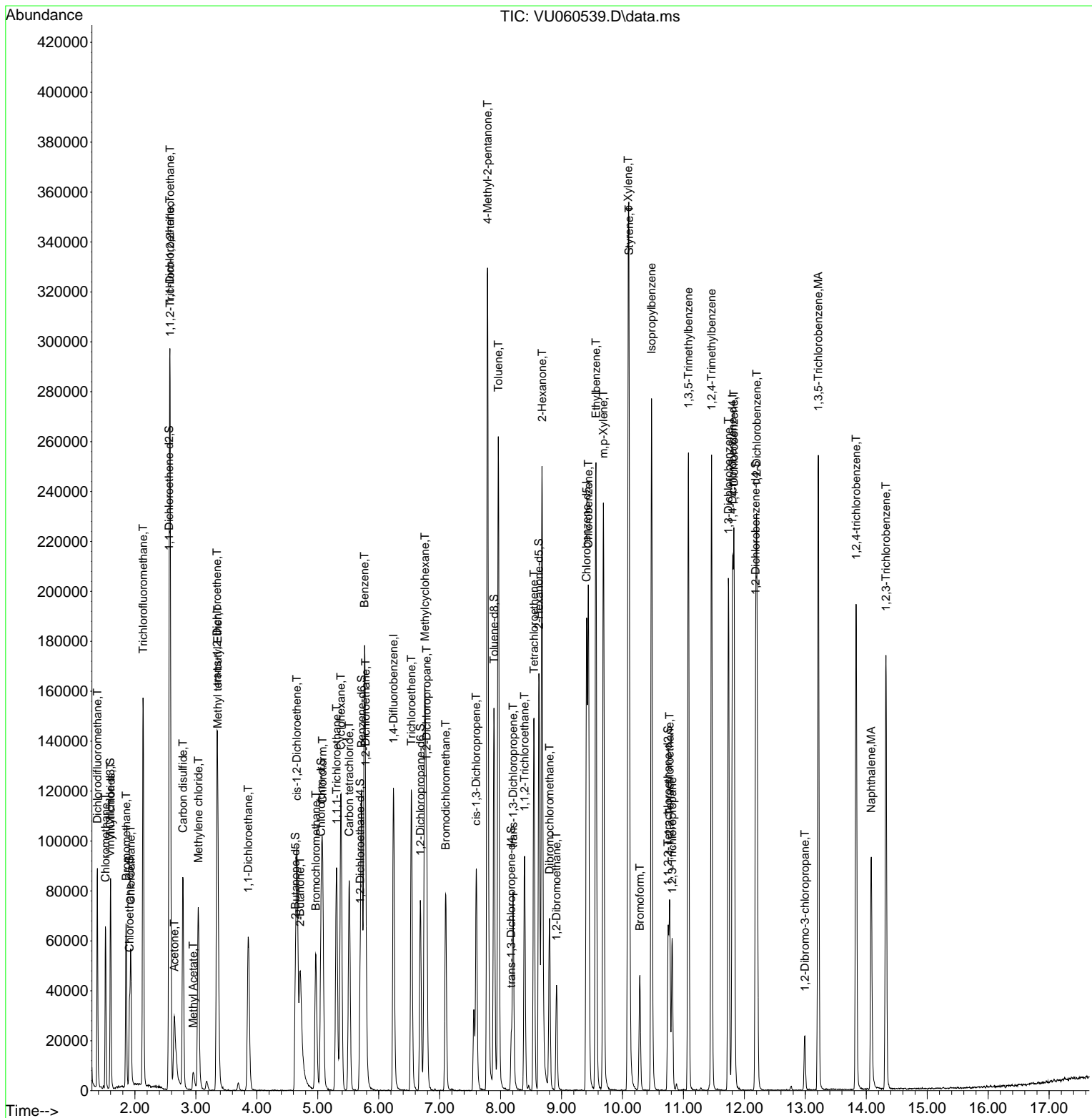
Compound	R. T.	QI on	Response	Conc	Units	Dev(Min)
27) 1,2-Di chloroethane	5.785	62	48345	4.683	ug/L	95
29) 1,1,1-Tri chloroethane	5.309	97	66126	4.760	ug/L	97
30) Cycl ohexane	5.377	56	57313	4.984	ug/L	97
31) Carbon tetrachl ori de	5.515	117	60303	4.697	ug/L	100
33) Benzene	5.766	78	155356	4.830	ug/L	100
34) Tri chl oroethene	6.535	95	42315	4.853	ug/L	98
35) Methyl cycl ohexane	6.756	83	57088	4.772	ug/L	98
37) 1,2-Di chl oropropane	6.785	63	42240	5.125	ug/L	99
38) Bromodi chl oromethane	7.097	83	53032	4.897	ug/L	99
39) ci s-1,3-Di chl oropropene	7.599	75	54854	4.539	ug/L	99
40) 4-Methyl -2-pentanone	7.785	43	220232	51.305	ug/L	99
42) Tol uene	7.962	91	195530	5.752	ug/L	98
44) trans-1,3-Di chl oropropene	8.203	75	47574	4.795	ug/L	97
45) 1,1,2-Tri chl oroethane	8.393	97	28662	4.801	ug/L	97
47) Tetrachl oroethene	8.547	164	33506	4.688	ug/L	97
48) 2-Hexanone	8.679	43	163624	50.933	ug/L	99
49) Di bromochl oromethane	8.801	129	34945	5.055	ug/L	99
50) 1,2-Di bromoethane	8.917	107	27859	5.083	ug/L #	92
51) Chl orobenzene	9.441	112	108265	4.920	ug/L	98
52) Ethyl benzene	9.563	91	178033	4.942	ug/L	100
53) m,p-Xyl ene	9.685	106	69086	5.159	ug/L	97
54) o-Xyl ene	10.094	106	65805	4.800	ug/L	96
55) Styrene	10.107	104	112595	5.012	ug/L	99
57) 1,1,2,2-Tetrachl oroethane	10.772	83	36291	4.761	ug/L	99
59) Bromoform	10.284	173	21234	4.782	ug/L	100
60) I sopropyl benzene	10.476	105	175410	4.859	ug/L	100
61) 1,2,3-Tri chl oropropane	10.814	75	26724	5.127	ug/L	96
62) 1,3,5-Tri methyl benzene	11.081	105	137277	5.102	ug/L	98
63) 1,2,4-Tri methyl benzene	11.460	105	134566	4.903	ug/L	98
64) 1,3-Di chl orobenzene	11.737	146	84287	4.771	ug/L	95
65) 1,4-Di chl orobenzene	11.830	146	85497	4.769	ug/L	99
67) 1,2-Di chl orobenzene	12.203	146	79351	4.788	ug/L	99
68) 1,2-Di bromo-3-chl oropr...	12.991	75	6424	5.460	ug/L	95
69) 1,3,5-Tri chl orobenzene	13.213	180	77728	5.706	ug/L	98
70) 1,2,4-tri chl orobenzene	13.833	180	64035	5.826	ug/L	97
71) Naphthal ene	14.081	128	83024	5.913	ug/L	99
72) 1,2,3-Tri chl orobenzene	14.322	180	56293	6.120	ug/L	99

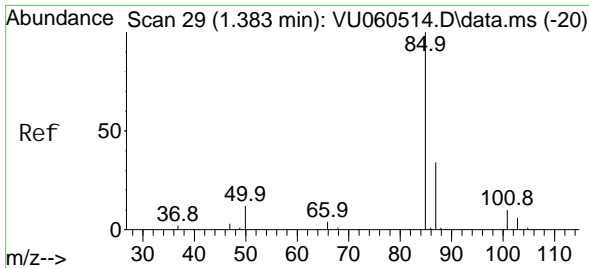
(#) = qualifier out of range (m) = manual integration (+) = signals summed

Data Path : Z:\voasrv\HPCHEM1\MSVOA_U\Data\VU082324\
 Data File : VU060539.D
 Acq On : 24 Aug 2024 03:14
 Operator : MD/SY
 Sample : VSTDCCCO05EC
 Mi sc : 25.0mL/MSVOA_U/WATER
 ALS Vial : 35 Sample Multiplier: 1

Instrument :
 MSVOA_U
 ClientSampleId :

Quant Time: Aug 24 04:41:10 2024
 Quant Method : Z:\voasrv\HPCHEM1\MSVOA_U\Method\SFAMUTR082324WMA.M
 Quant Title : TRACE VOA SFAM1.0
 QLast Update : Sat Aug 24 01:46:38 2024
 Response via : Initial Calibration

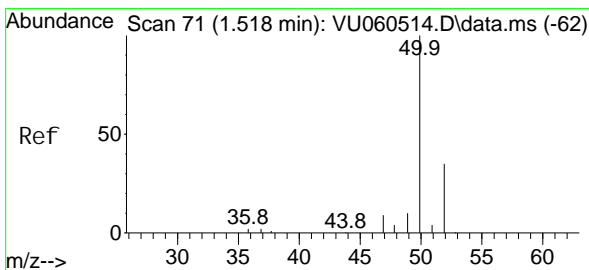
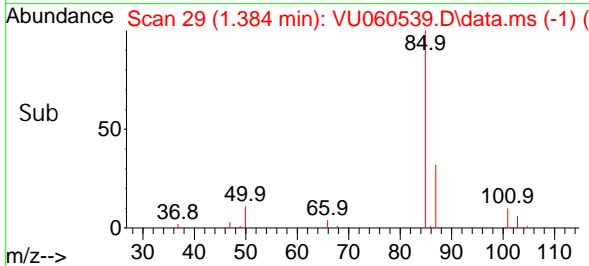
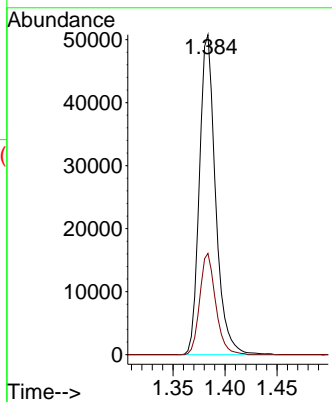
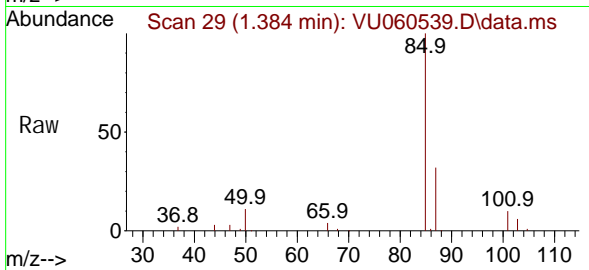




#2
 Di chl orodi fluoromethane
 Concen: 4.799 ug/L
 RT: 1.384 min Scan# 29
 Delta R.T. 0.000 min
 Lab File: VU060539.D
 Acq: 24 Aug 2024 03:14

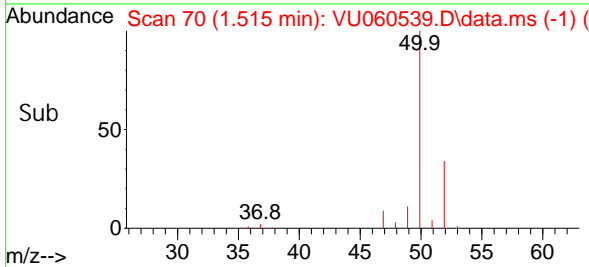
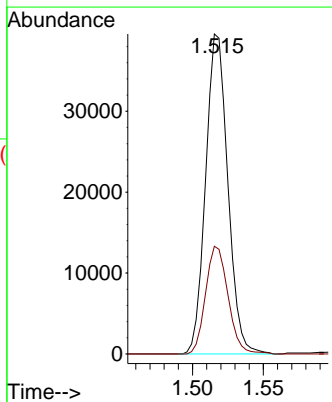
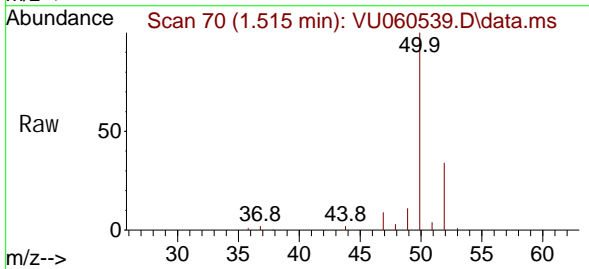
Instrument :
 MSVOA_U
 ClientSampleId :

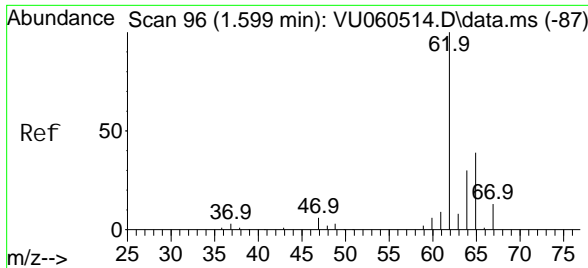
Tgt Ion: 85 Resp: 54746
 Ion Ratio Lower Upper
 85 100
 87 31.1 26.2 39.4



#3
 Chloromethane
 Concen: 4.362 ug/L
 RT: 1.515 min Scan# 70
 Delta R.T. -0.003 min
 Lab File: VU060539.D
 Acq: 24 Aug 2024 03:14

Tgt Ion: 50 Resp: 43113
 Ion Ratio Lower Upper
 50 100
 52 33.6 22.7 42.1

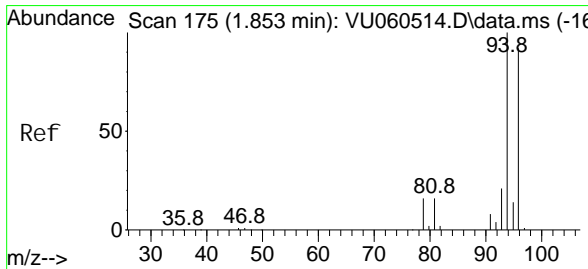
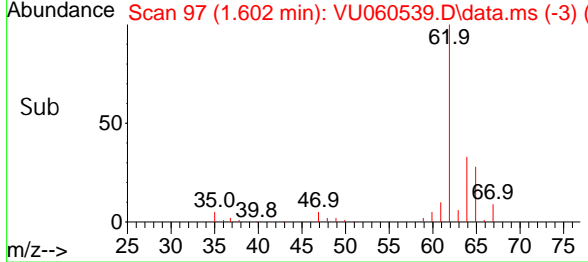
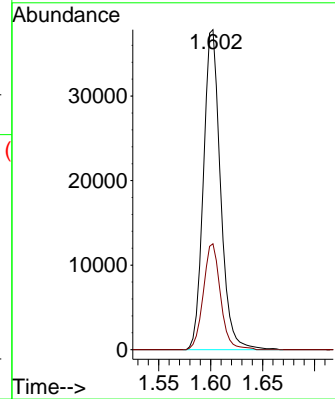
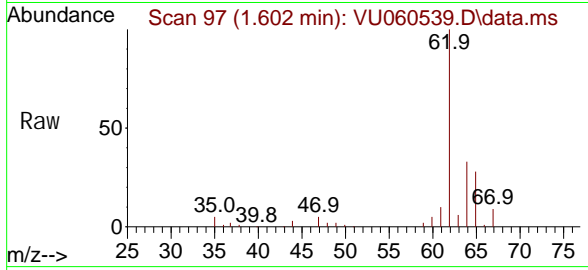




#5
 Vinyl chloride
 Concen: 4.457 ug/L
 RT: 1.602 min Scan# 91
 Delta R.T. 0.003 min
 Lab File: VU060539.D
 Acq: 24 Aug 2024 03:14

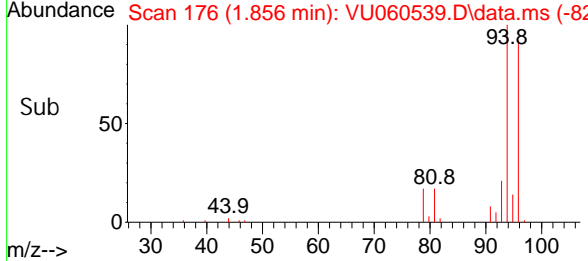
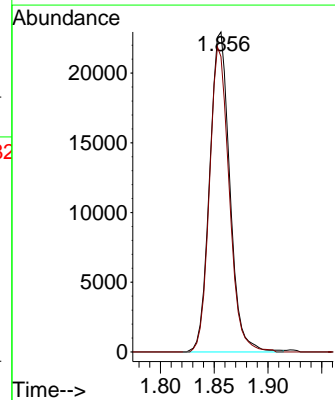
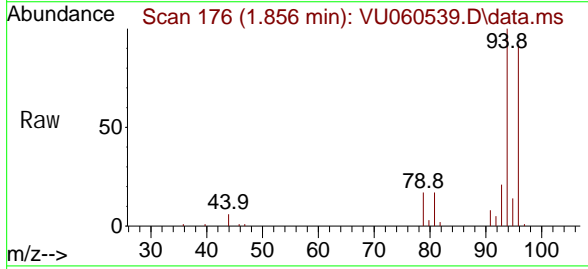
Instrument : MSVOA_U
 ClientSampleId :

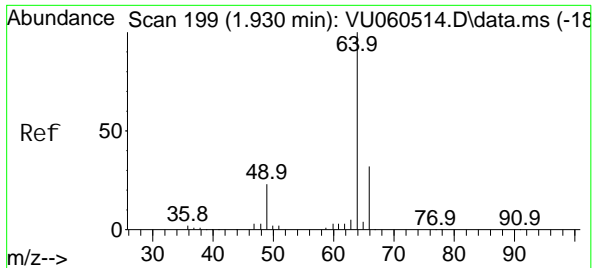
Tgt Ion: 62 Resp: 43371
 Ion Ratio Lower Upper
 62 100
 64 33.1 22.0 40.8



#6
 Bromomethane
 Concen: 3.055 ug/L
 RT: 1.856 min Scan# 176
 Delta R.T. 0.003 min
 Lab File: VU060539.D
 Acq: 24 Aug 2024 03:14

Tgt Ion: 94 Resp: 29920
 Ion Ratio Lower Upper
 94 100
 96 92.3 63.3 117.5

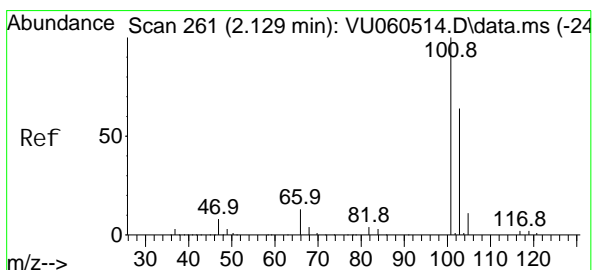
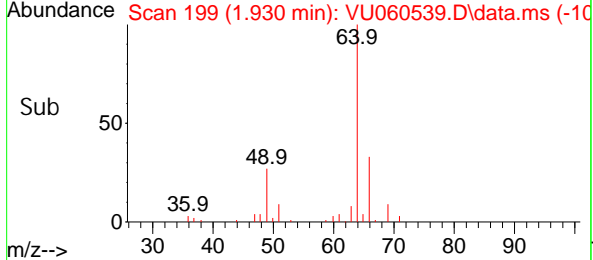
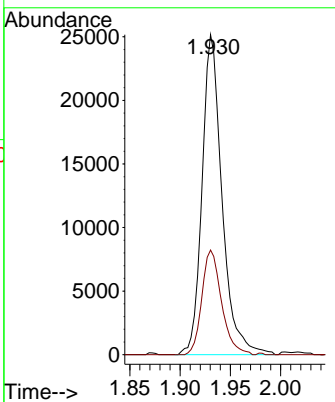
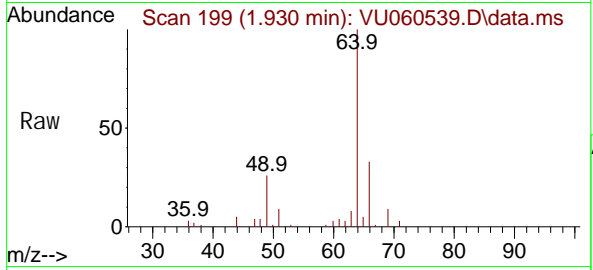




#8
 Chloroethane
 Concen: 3.920 ug/L
 RT: 1.930 min Scan# 199
 Delta R.T. 0.000 min
 Lab File: VU060539.D
 Acq: 24 Aug 2024 03:14

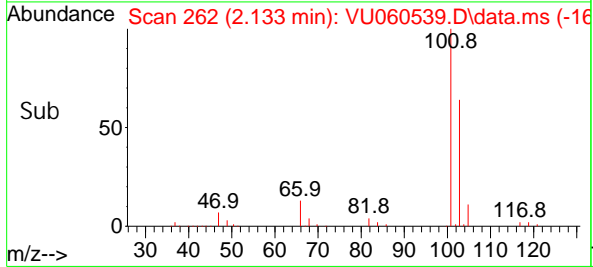
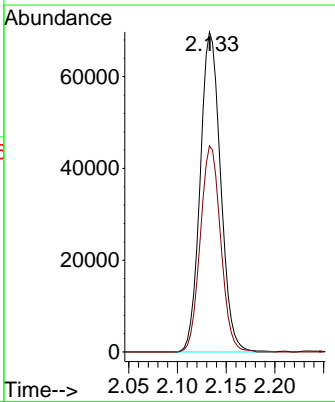
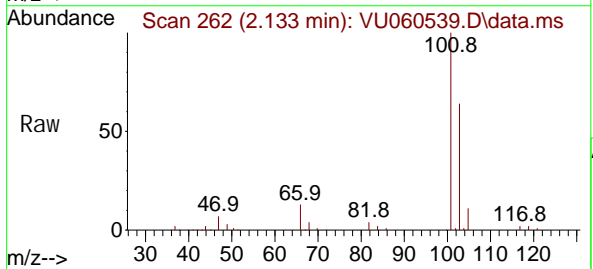
Instrument : MSVOA_U
 ClientSampleId :

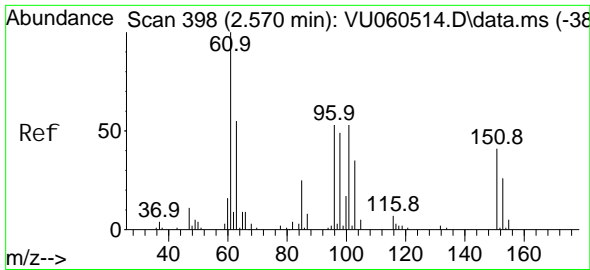
Tgt Ion: 64 Resp: 34807
 Ion Ratio Lower Upper
 64 100
 66 32.7 22.5 41.9



#9
 Trichlorofluoromethane
 Concen: 4.799 ug/L
 RT: 2.133 min Scan# 262
 Delta R.T. 0.003 min
 Lab File: VU060539.D
 Acq: 24 Aug 2024 03:14

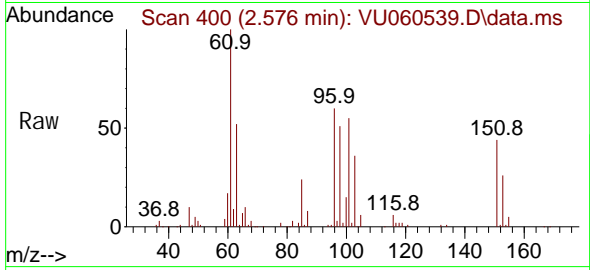
Tgt Ion: 101 Resp: 101528
 Ion Ratio Lower Upper
 101 100
 103 64.2 51.4 77.2



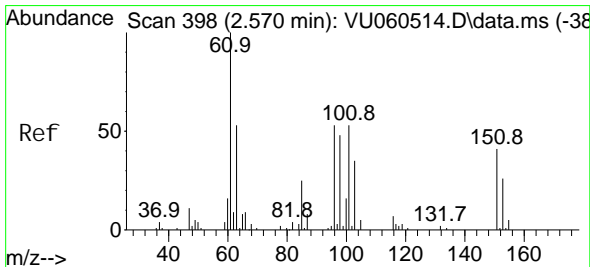
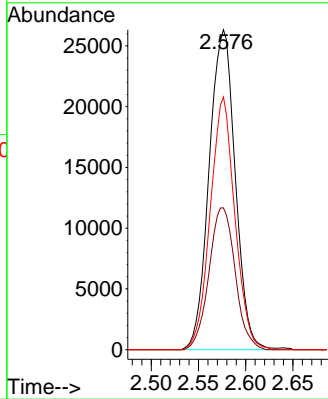
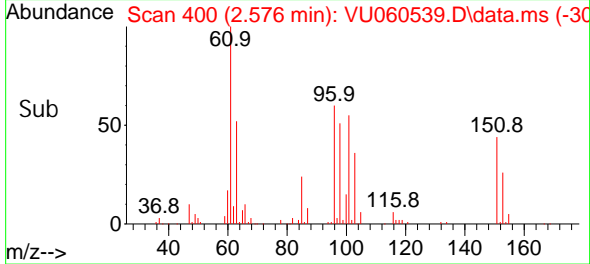


#10
 1,1,2-Tri chloro-1,2,2-tri fluoroethane
 Concen: 5.646 ug/L
 RT: 2.576 min Scan# 400
 Delta R.T. 0.007 min
 Lab File: VU060539.D
 Acq: 24 Aug 2024 03:14

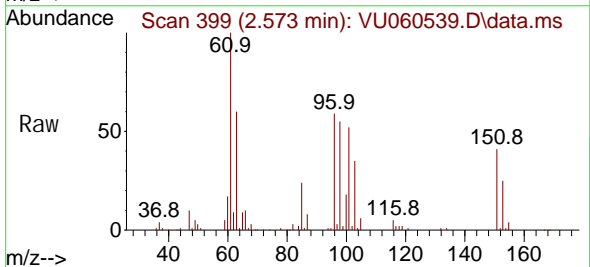
Instrument :
 MSVOA_U
 ClientSampleId :



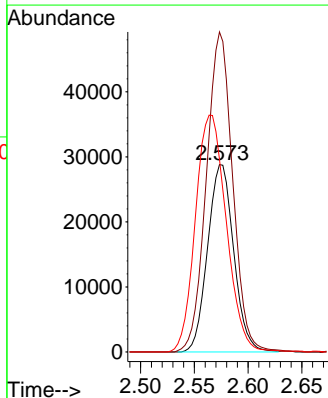
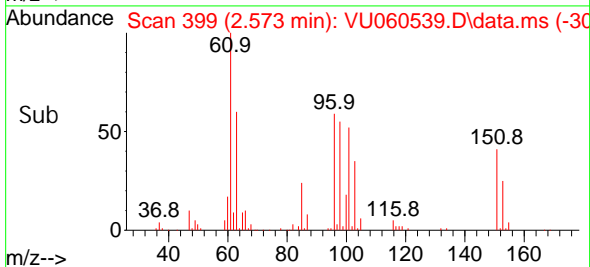
Tgt Ion: 101 Resp: 50535
 Ion Ratio Lower Upper
 101 100
 85 44.5 35.8 53.6
 151 74.6 61.7 92.5

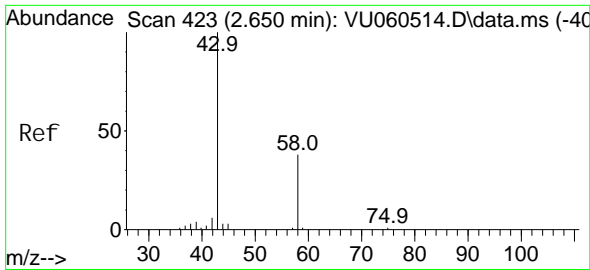


#12
 1,1-Di chloroethene
 Concen: 5.896 ug/L
 RT: 2.573 min Scan# 399
 Delta R.T. 0.003 min
 Lab File: VU060539.D
 Acq: 24 Aug 2024 03:14



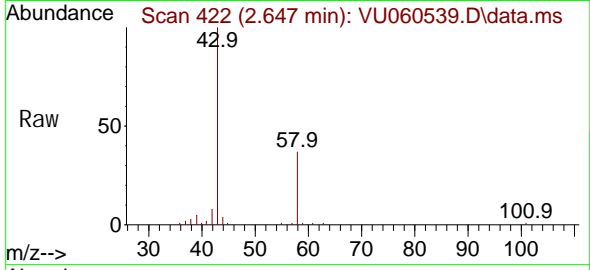
Tgt Ion: 96 Resp: 48571
 Ion Ratio Lower Upper
 96 100
 61 170.7 116.4 216.2
 63 102.7 74.8 139.0



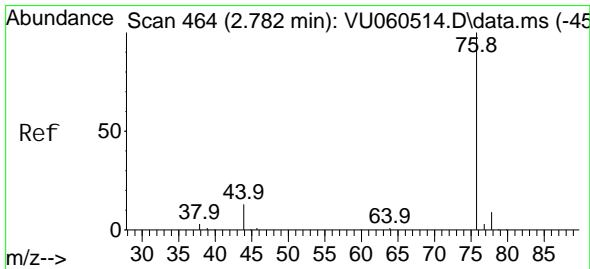
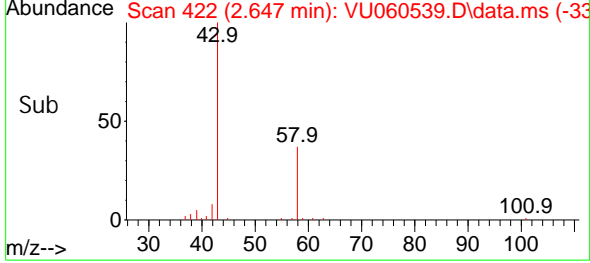
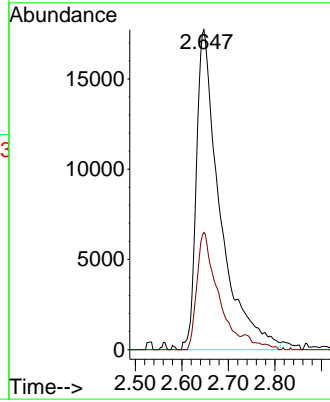


#13
 Acetone
 Concen: 48.899 ug/L
 RT: 2.647 min Scan# 41
 Delta R.T. -0.003 min
 Lab File: VU060539.D
 Acq: 24 Aug 2024 03:14

Instrument :
 MSVOA_U
 ClientSampleId :

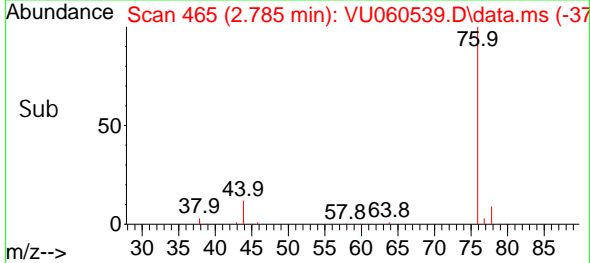
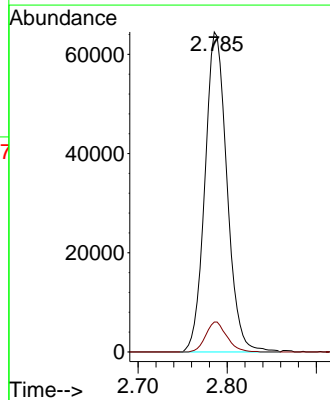
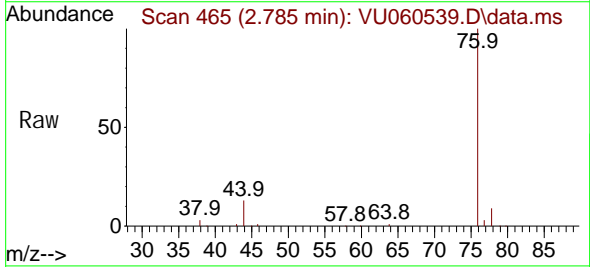


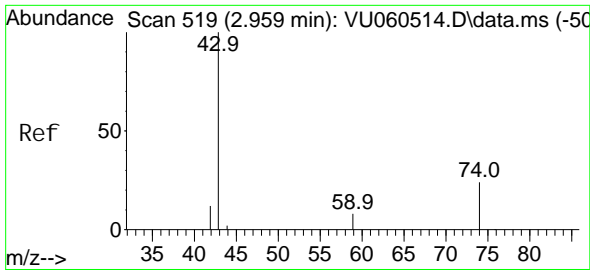
Tgt Ion: 43 Resp: 62469
 Ion Ratio Lower Upper
 43 100
 58 31.9 0.0 66.8



#14
 Carbon di sul fi de
 Concen: 4.142 ug/L
 RT: 2.785 min Scan# 465
 Delta R.T. 0.003 min
 Lab File: VU060539.D
 Acq: 24 Aug 2024 03:14

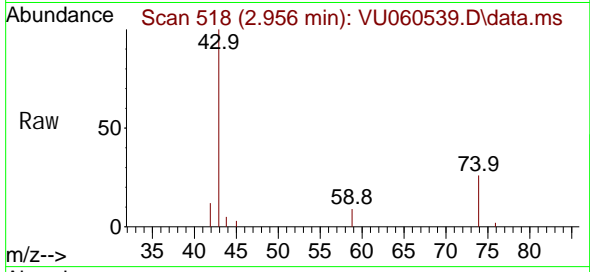
Tgt Ion: 76 Resp: 110742
 Ion Ratio Lower Upper
 76 100
 78 9.4 7.4 11.2



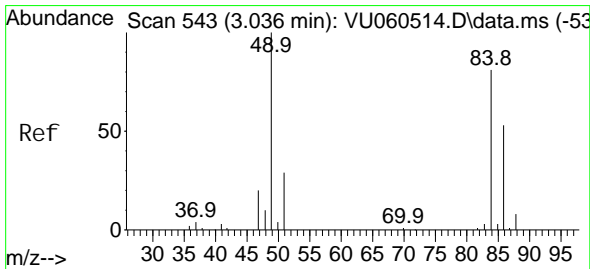
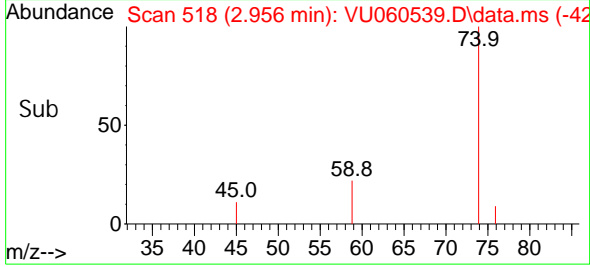
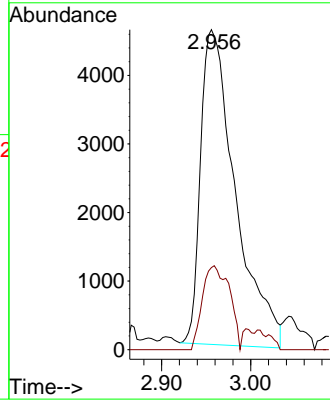


#15
Methyl Acetate
Concen: 4.774 ug/L
RT: 2.956 min Scan# 518
Delta R.T. -0.003 min
Lab File: VU060539.D
Acq: 24 Aug 2024 03:14

Instrument : MSVOA_U
ClientSampleId :

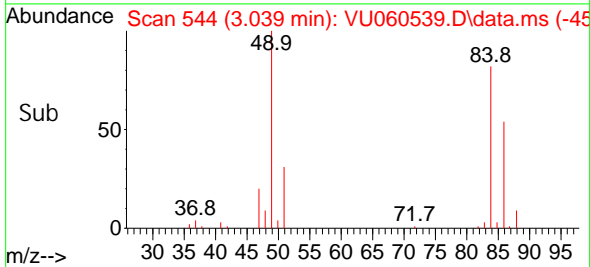
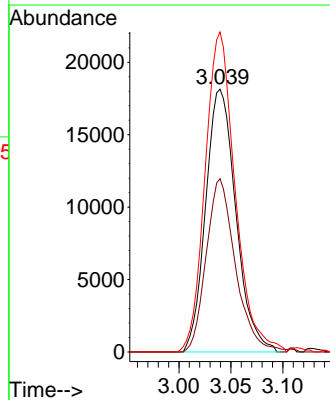
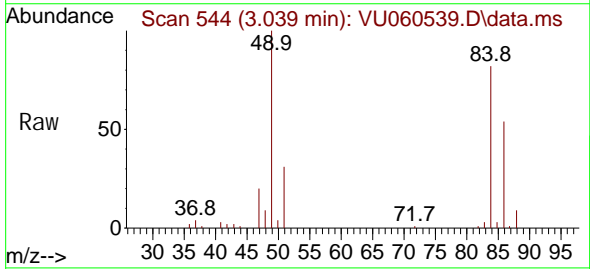


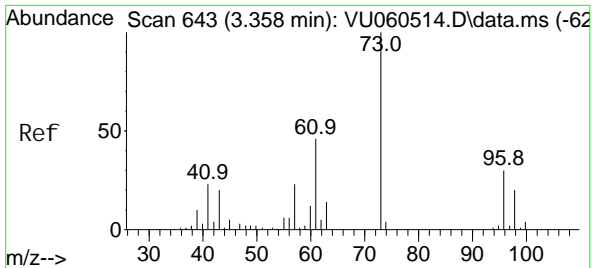
Tgt Ion: 43 Resp: 12471
Ion Ratio Lower Upper
43 100
74 20.6 21.4 32.2#



#16
Methylene chloride
Concen: 4.595 ug/L
RT: 3.039 min Scan# 544
Delta R.T. 0.003 min
Lab File: VU060539.D
Acq: 24 Aug 2024 03:14

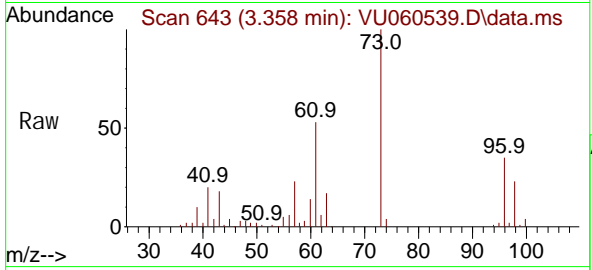
Tgt Ion: 84 Resp: 36771
Ion Ratio Lower Upper
84 100
86 66.0 47.5 88.3
49 121.8 94.4 175.2





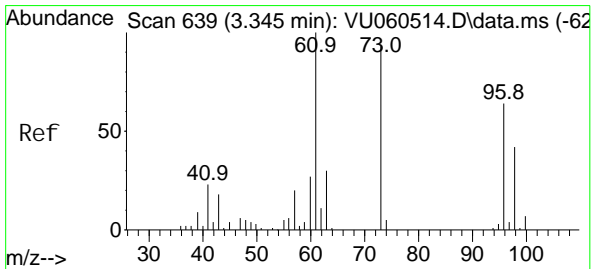
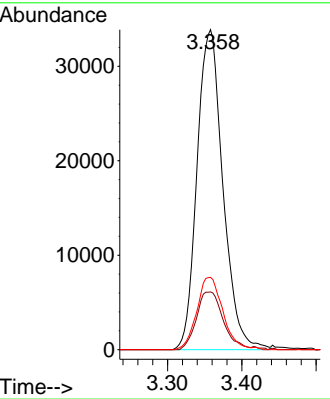
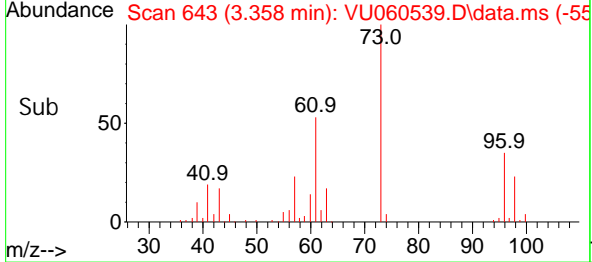
#17
 Methyl tert-butyl Ether
 Concen: 4.909 ug/L
 RT: 3.358 min Scan# 640
 Delta R.T. 0.000 min
 Lab File: VU060539.D
 Acq: 24 Aug 2024 03:14

Instrument : MSVOA_U
 ClientSampleId :

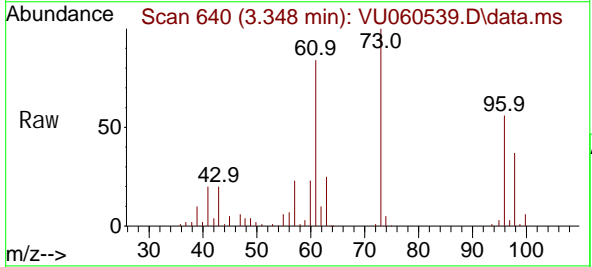


Tgt Ion: 73 Resp: 82075

Ion	Ratio	Lower	Upper
73	100		
43	18.6	15.8	23.6
57	22.6	16.8	25.2

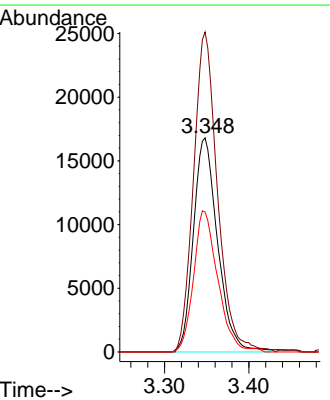
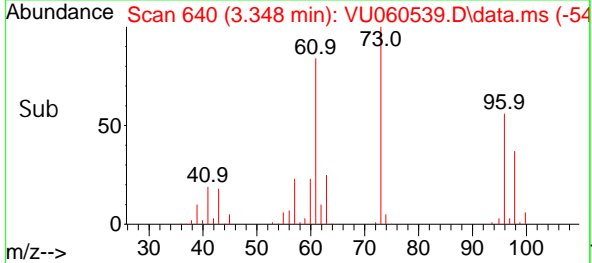


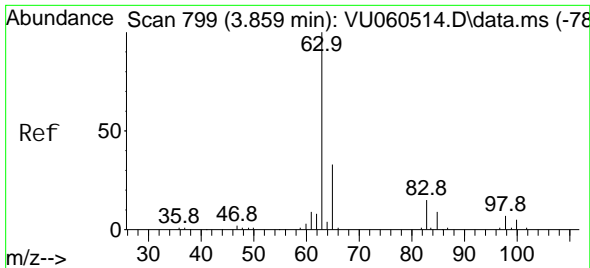
#18
 trans-1,2-Dichloroethene
 Concen: 4.695 ug/L
 RT: 3.348 min Scan# 640
 Delta R.T. 0.003 min
 Lab File: VU060539.D
 Acq: 24 Aug 2024 03:14



Tgt Ion: 96 Resp: 33674

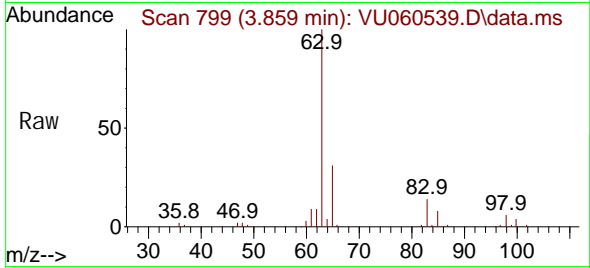
Ion	Ratio	Lower	Upper
96	100		
61	149.5	99.2	184.2
98	65.4	44.0	81.8



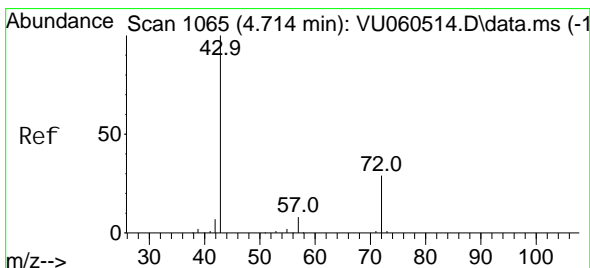
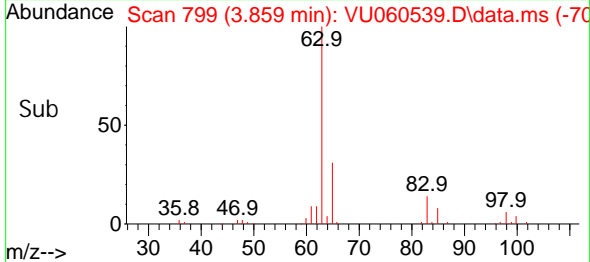
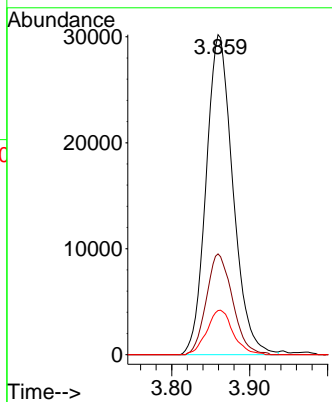


#19
 1,1-Dichloroethane
 Concen: 4.963 ug/L
 RT: 3.859 min Scan# 71
 Delta R.T. 0.000 min
 Lab File: VU060539.D
 Acq: 24 Aug 2024 03:14

Instrument : MSVOA_U
 ClientSampleId :

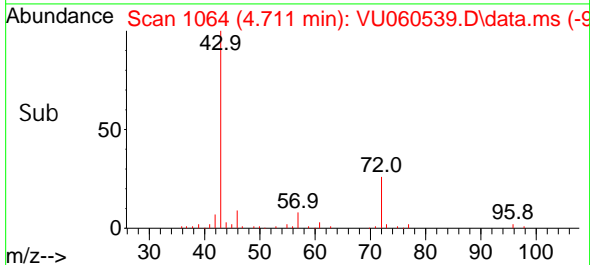
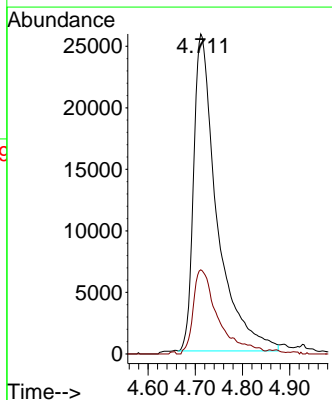
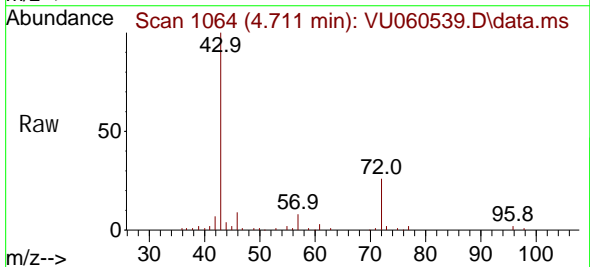


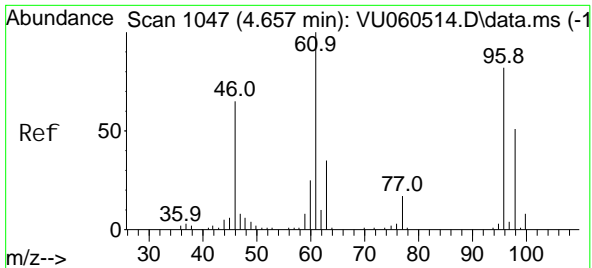
Tgt Ion: 63 Resp: 72135
 Ion Ratio Lower Upper
 63 100
 65 32.2 20.5 38.1
 83 13.8 9.2 17.2



#21
 2-Butanone
 Concen: 50.688 ug/L
 RT: 4.711 min Scan# 1064
 Delta R.T. -0.003 min
 Lab File: VU060539.D
 Acq: 24 Aug 2024 03:14

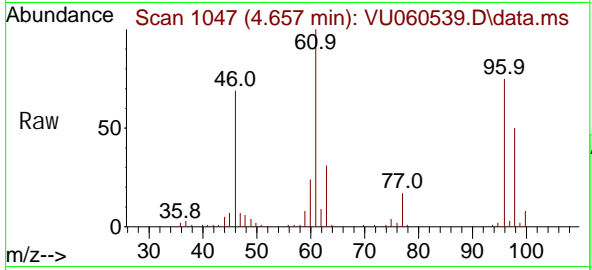
Tgt Ion: 43 Resp: 88554
 Ion Ratio Lower Upper
 43 100
 72 28.3 14.0 42.0





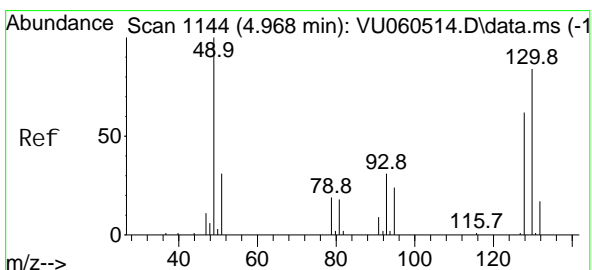
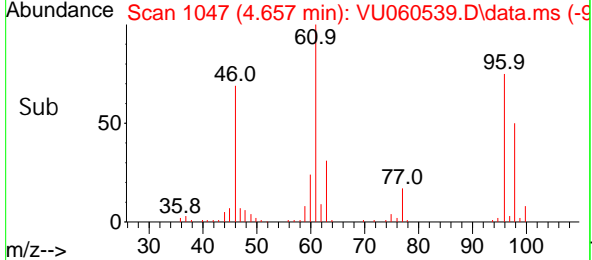
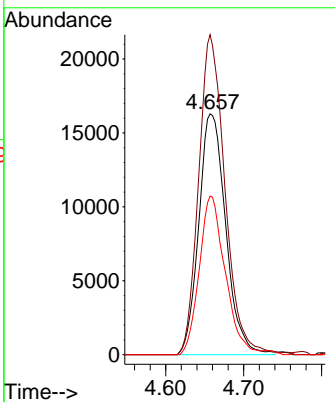
#22
 cis-1,2-Dichloroethene
 Concen: 4.907 ug/L
 RT: 4.657 min Scan# 1047
 Delta R.T. 0.000 min
 Lab File: VU060539.D
 Acq: 24 Aug 2024 03:14

Instrument : MSVOA_U
 ClientSampleId :

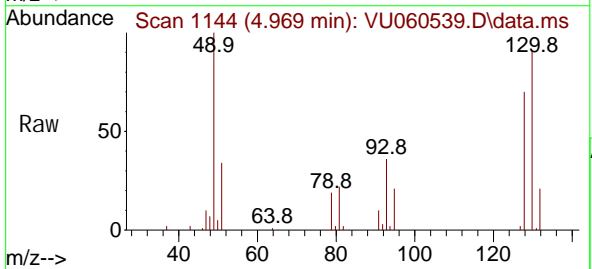


Tgt Ion: 96 Resp: 39215

Ion	Ratio	Lower	Upper
96	100		
61	132.9	92.9	172.5
98	65.8	45.0	83.6

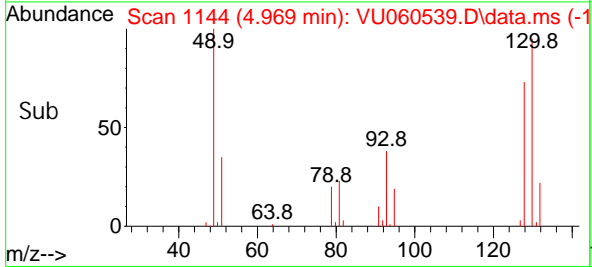
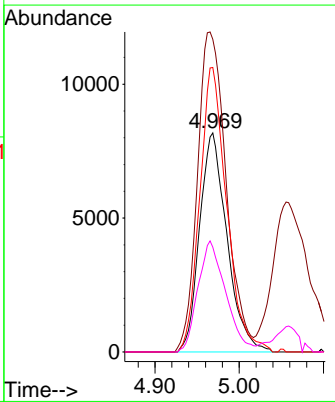


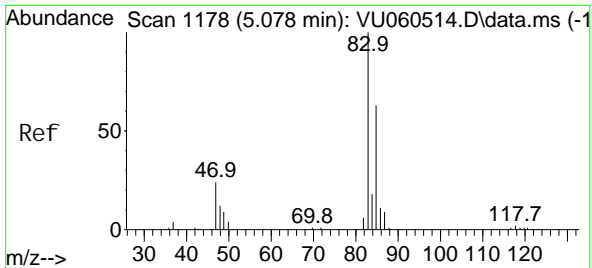
#23
 Bromochloromethane
 Concen: 5.100 ug/L
 RT: 4.969 min Scan# 1144
 Delta R.T. 0.000 min
 Lab File: VU060539.D
 Acq: 24 Aug 2024 03:14



Tgt Ion: 128 Resp: 18523

Ion	Ratio	Lower	Upper
128	100		
49	142.7	108.1	200.7
130	129.9	93.1	172.9
51	47.9	45.0	67.4

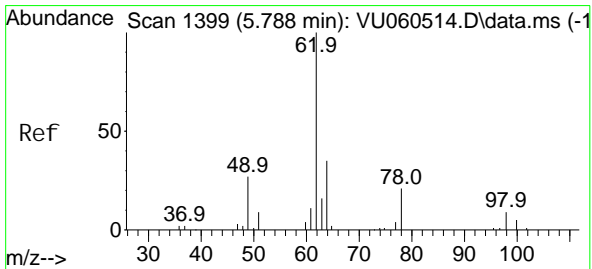
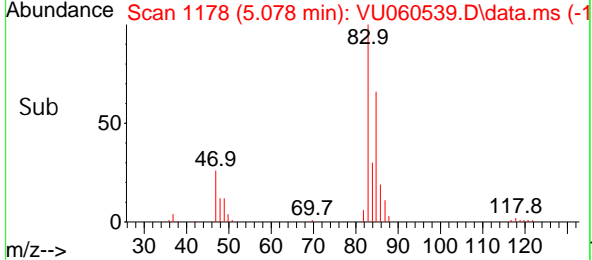
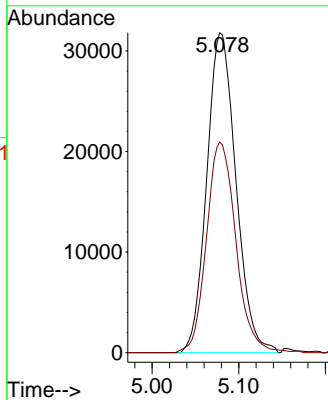
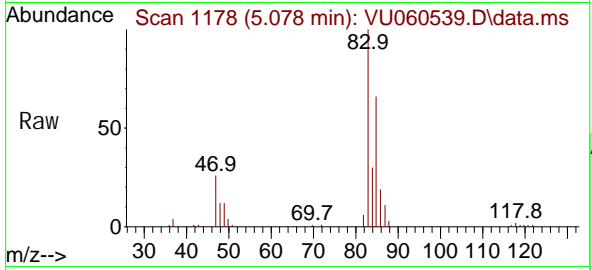




#25
 Chloroform
 Concen: 4.844 ug/L
 RT: 5.078 min Scan# 1178
 Delta R.T. 0.000 min
 Lab File: VU060539.D
 Acq: 24 Aug 2024 03:14

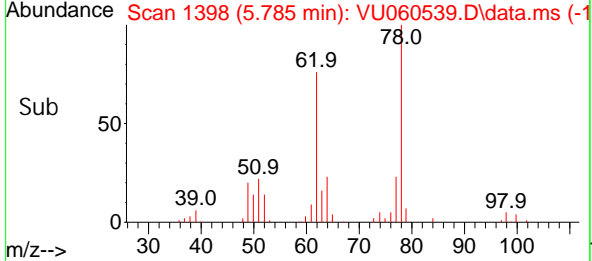
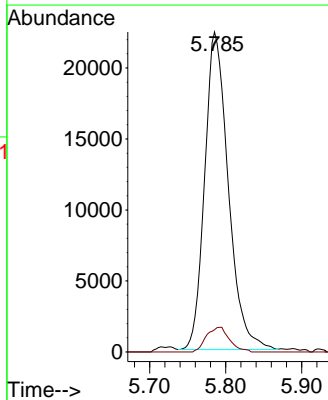
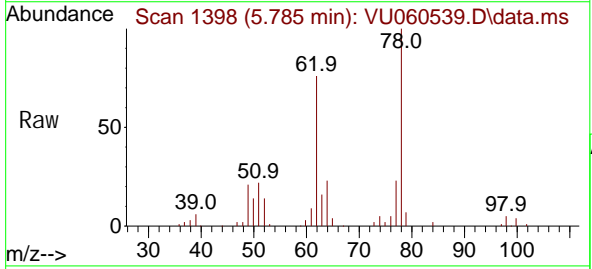
Instrument : MSVOA_U
 ClientSampleId :

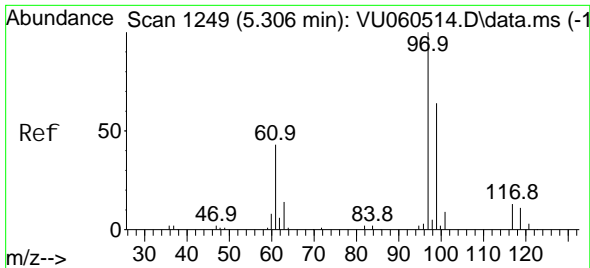
Tgt Ion: 83 Resp: 74513
 Ion Ratio Lower Upper
 83 100
 85 65.8 46.4 86.2



#27
 1,2-Dichloroethane
 Concen: 4.683 ug/L
 RT: 5.785 min Scan# 1398
 Delta R.T. -0.003 min
 Lab File: VU060539.D
 Acq: 24 Aug 2024 03:14

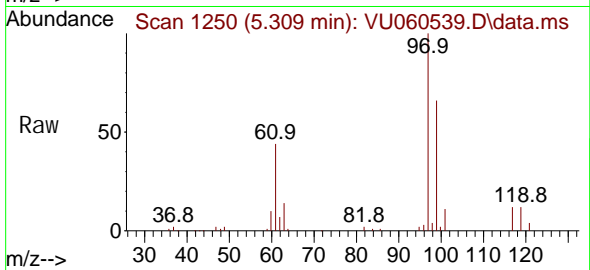
Tgt Ion: 62 Resp: 48345
 Ion Ratio Lower Upper
 62 100
 98 7.0 7.0 10.4



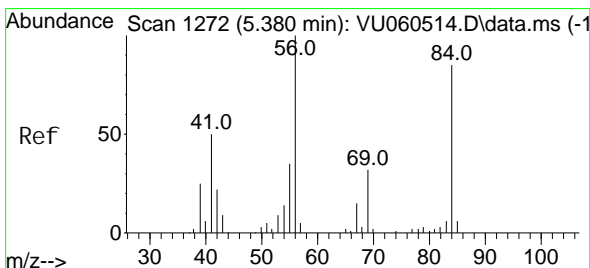
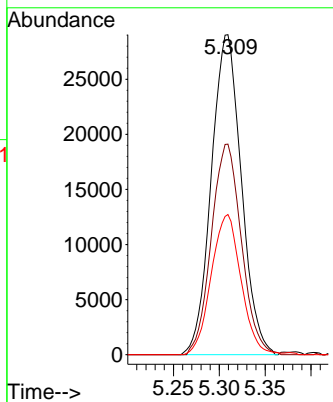
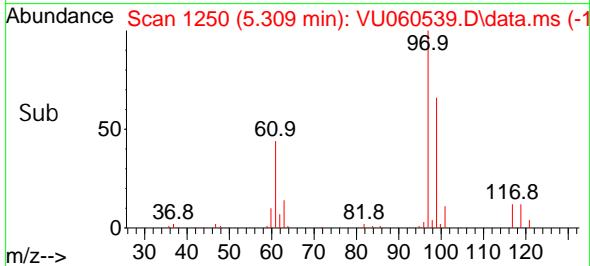


#29
 1,1,1-Trichloroethane
 Concen: 4.760 ug/L
 RT: 5.309 min Scan# 11
 Delta R.T. 0.003 min
 Lab File: VU060539.D
 Acq: 24 Aug 2024 03:14

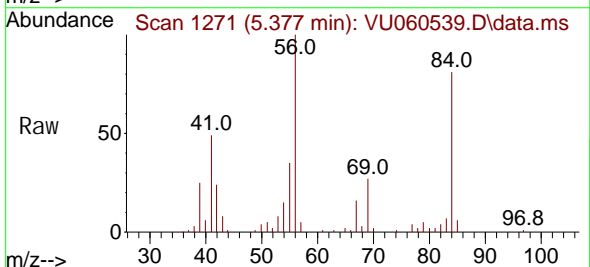
Instrument :
 MSVOA_U
 ClientSampleId :



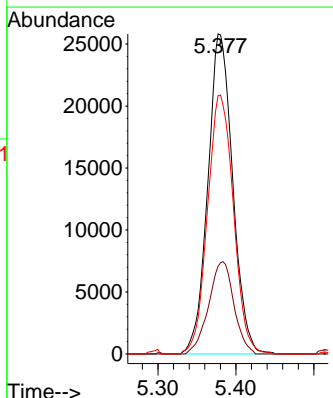
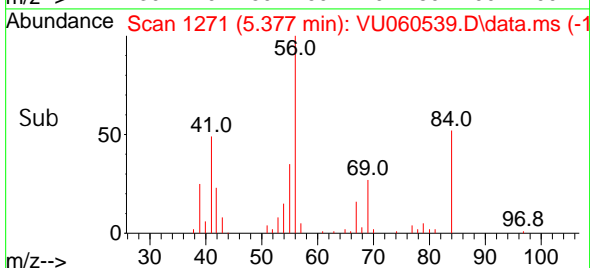
Tgt Ion: 97 Resp: 66126
 Ion Ratio Lower Upper
 97 100
 99 65.9 49.7 74.5
 61 43.5 35.4 53.2

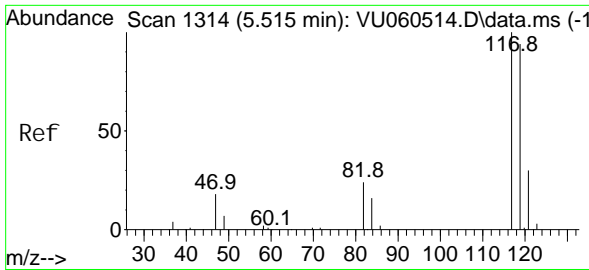


#30
 Cyclohexane
 Concen: 4.984 ug/L
 RT: 5.377 min Scan# 1271
 Delta R.T. -0.003 min
 Lab File: VU060539.D
 Acq: 24 Aug 2024 03:14



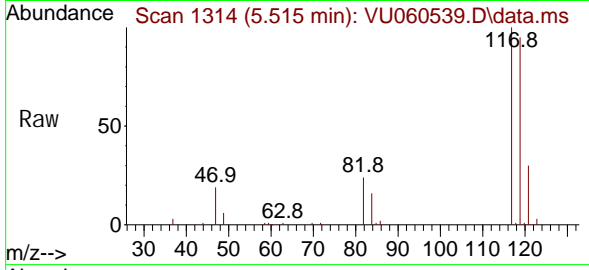
Tgt Ion: 56 Resp: 57313
 Ion Ratio Lower Upper
 56 100
 69 29.3 24.2 36.2
 84 84.3 69.7 104.5



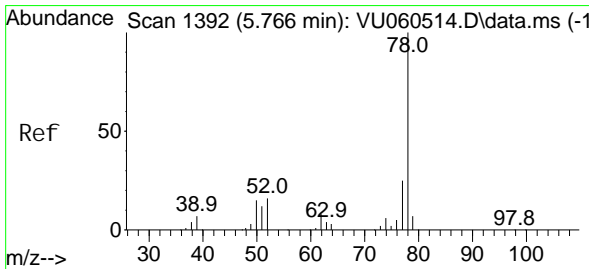
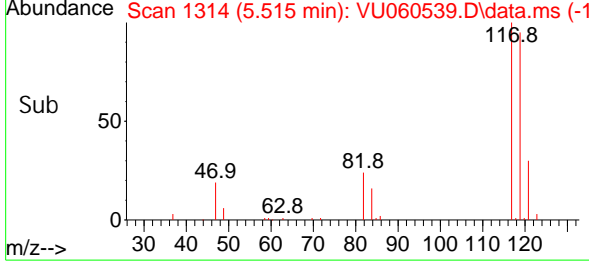
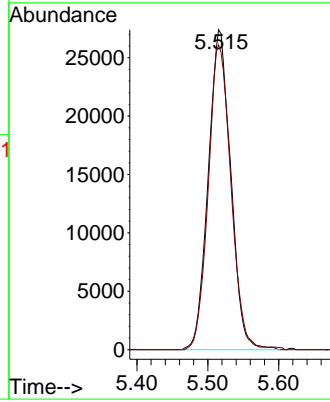


#31
 Carbon tetrachloride
 Concen: 4.697 ug/L
 RT: 5.515 min Scan# 1117
 Delta R.T. 0.000 min
 Lab File: VU060539.D
 Acq: 24 Aug 2024 03:14

Instrument : MSVOA_U
 ClientSampleId :

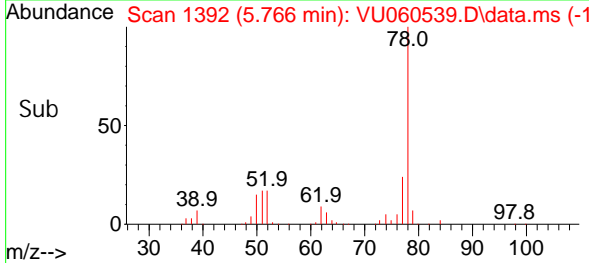
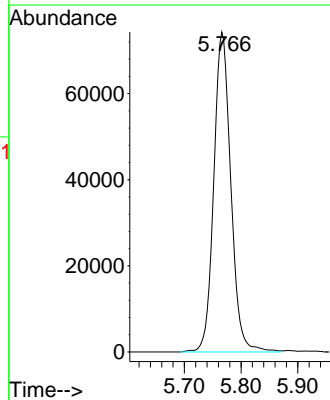
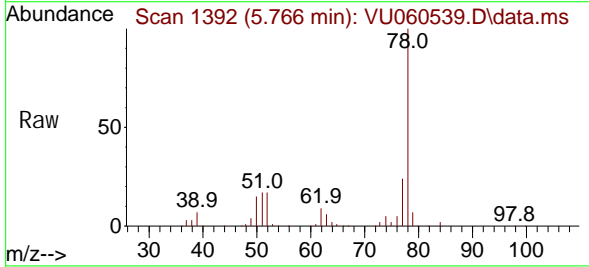


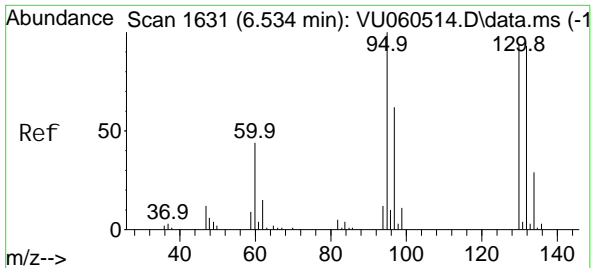
Tgt Ion: 117 Resp: 60303
 Ion Ratio Lower Upper
 117 100
 119 95.8 76.4 114.6



#33
 Benzene
 Concen: 4.830 ug/L
 RT: 5.766 min Scan# 1392
 Delta R.T. 0.000 min
 Lab File: VU060539.D
 Acq: 24 Aug 2024 03:14

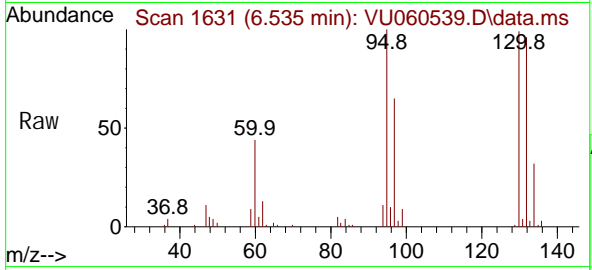
Tgt Ion: 78 Resp: 155356





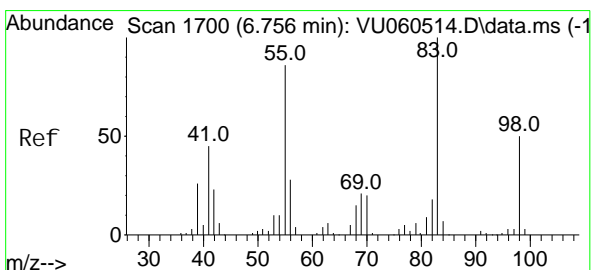
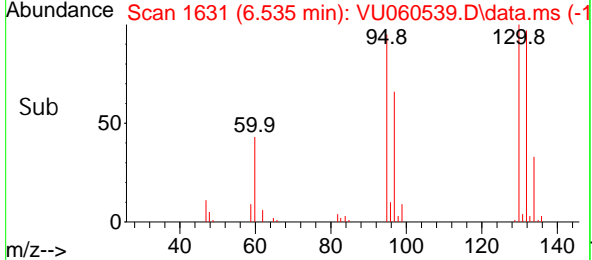
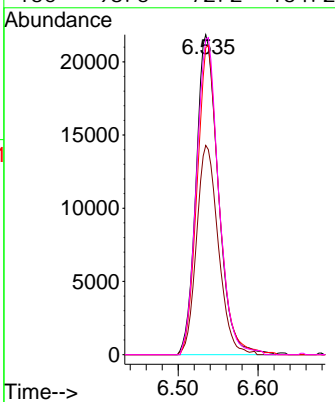
#34
 Trichloroethene
 Concen: 4.853 ug/L
 RT: 6.535 min Scan# 1631
 Delta R.T. 0.000 min
 Lab File: VU060539.D
 Acq: 24 Aug 2024 03:14

Instrument : MSVOA_U
 ClientSampleId :



Tgt Ion: 95 Resp: 42315

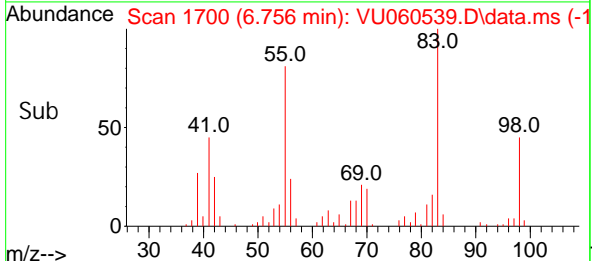
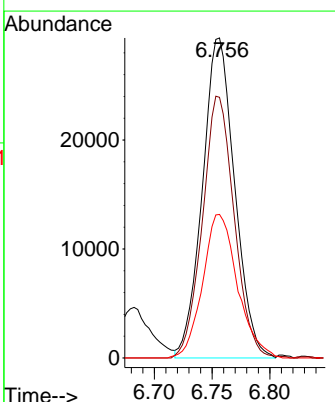
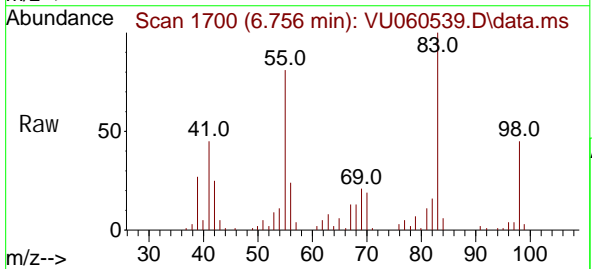
Ion	Ratio	Lower	Upper
95	100		
97	65.4	45.8	85.2
132	96.0	67.4	125.2
130	98.5	72.2	134.2

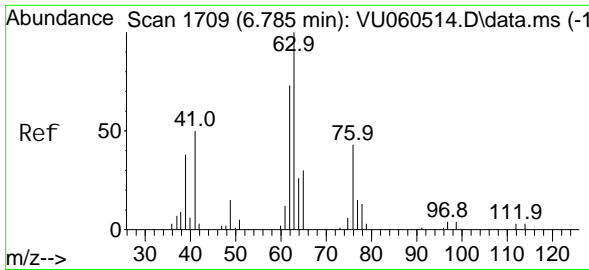


#35
 Methyl cycl ohexane
 Concen: 4.772 ug/L
 RT: 6.756 min Scan# 1700
 Delta R.T. 0.000 min
 Lab File: VU060539.D
 Acq: 24 Aug 2024 03:14

Tgt Ion: 83 Resp: 57088

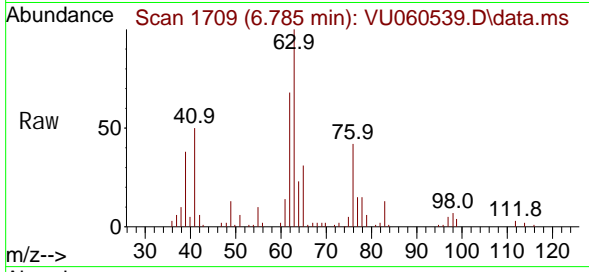
Ion	Ratio	Lower	Upper
83	100		
55	80.6	65.8	98.8
98	48.4	37.8	56.8



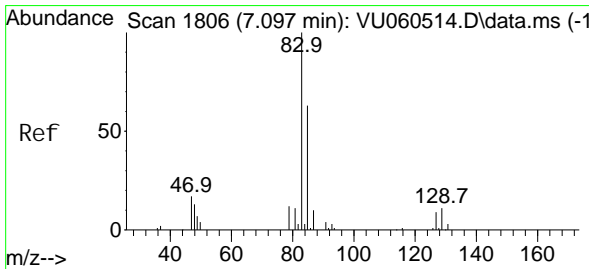
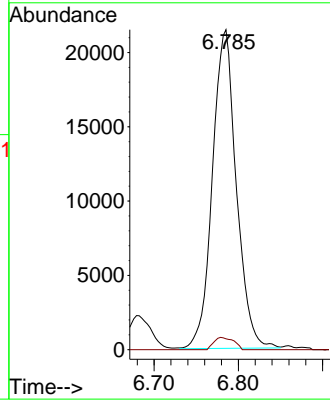
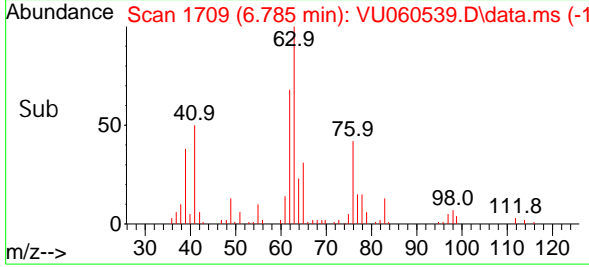


#37
 1, 2-Di chl oropropane
 Concen: 5.125 ug/L
 RT: 6.785 min Scan# 1709
 Del ta R. T. 0.000 min
 Lab File: VU060539.D
 Acq: 24 Aug 2024 03:14

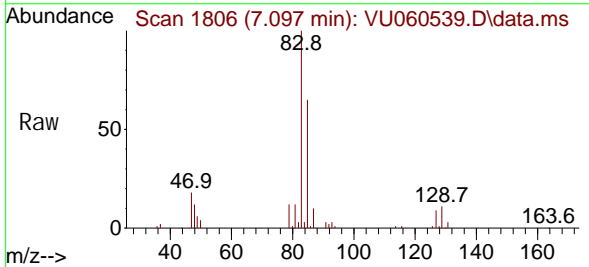
Instrument : MSVOA_U
 ClientSampleId :



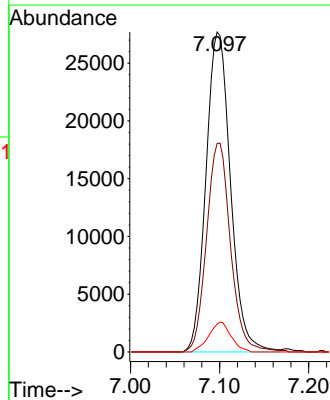
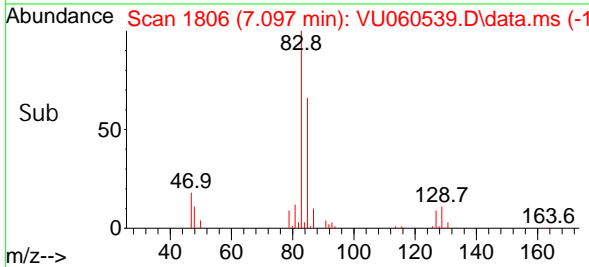
Tgt Ion: 63 Resp: 42240
 Ion Ratio Lower Upper
 63 100
 112 3.2 2.3 3.5

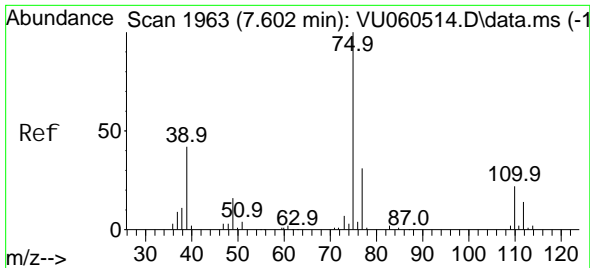


#38
 Bromodi chl oromethane
 Concen: 4.897 ug/L
 RT: 7.097 min Scan# 1806
 Del ta R. T. 0.000 min
 Lab File: VU060539.D
 Acq: 24 Aug 2024 03:14



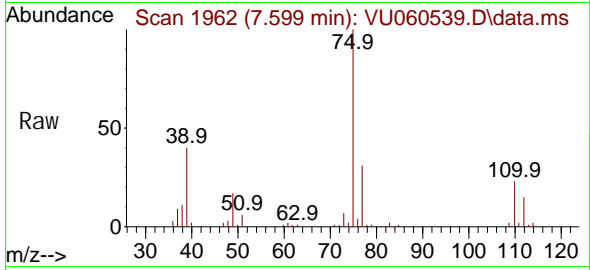
Tgt Ion: 83 Resp: 53032
 Ion Ratio Lower Upper
 83 100
 85 65.2 44.9 83.5
 127 8.7 7.3 10.9



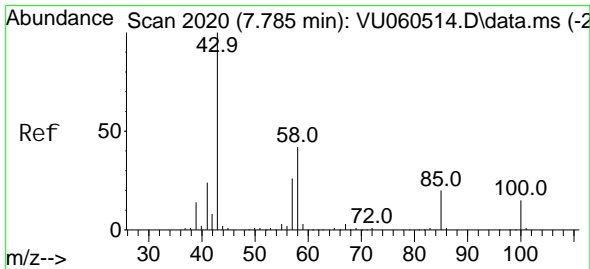
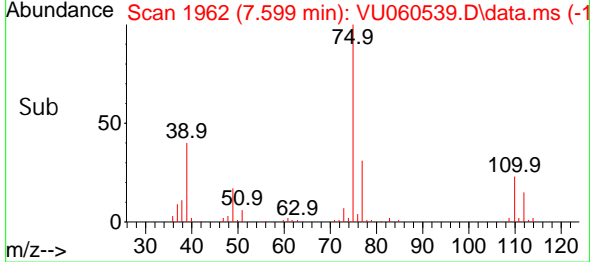
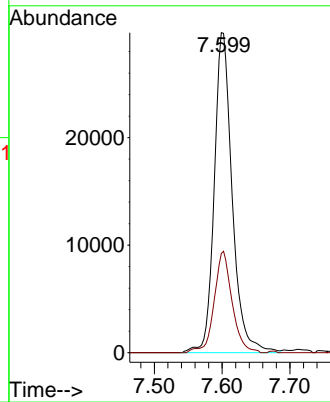


#39
 cis-1,3-Dichloropropene
 Concentration: 4.539 ug/L
 RT: 7.599 min Scan# 1962
 Delta R.T. -0.003 min
 Lab File: VU060539.D
 Acq: 24 Aug 2024 03:14

Instrument : MSVOA_U
 ClientSampleId :

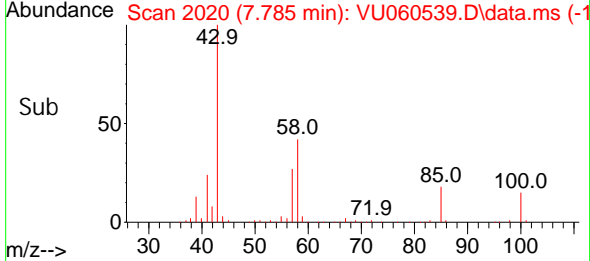
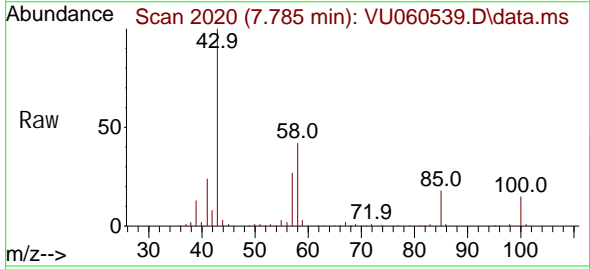
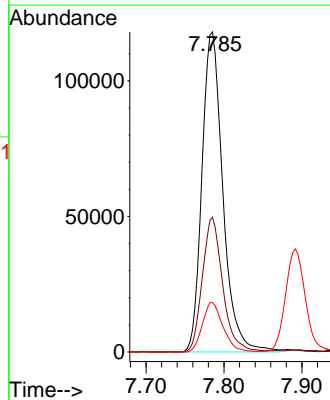


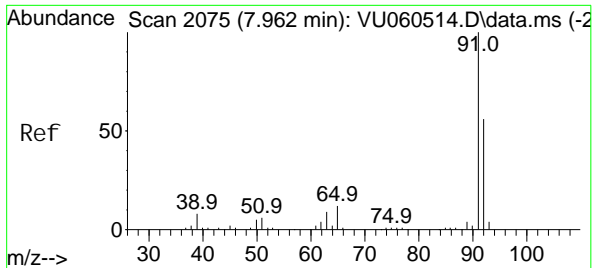
Tgt Ion: 75 Resp: 54854
 Ion Ratio Lower Upper
 75 100
 77 31.0 22.1 41.1



#40
 4-Methyl-2-pentanone
 Concentration: 51.305 ug/L
 RT: 7.785 min Scan# 2020
 Delta R.T. 0.000 min
 Lab File: VU060539.D
 Acq: 24 Aug 2024 03:14

Tgt Ion: 43 Resp: 220232
 Ion Ratio Lower Upper
 43 100
 58 40.9 32.5 48.7
 100 15.2 12.5 18.7

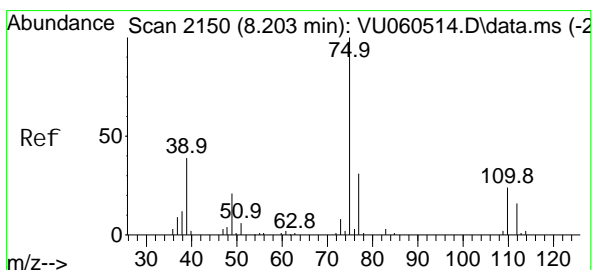
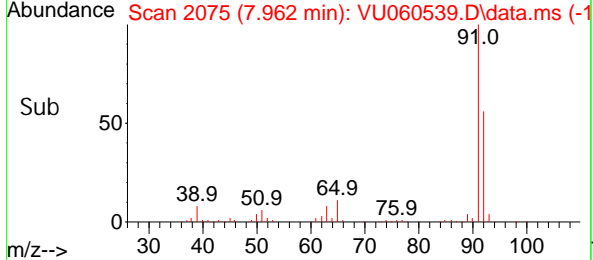
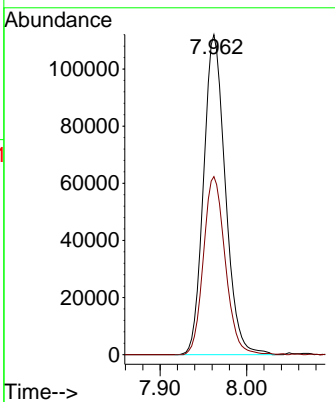
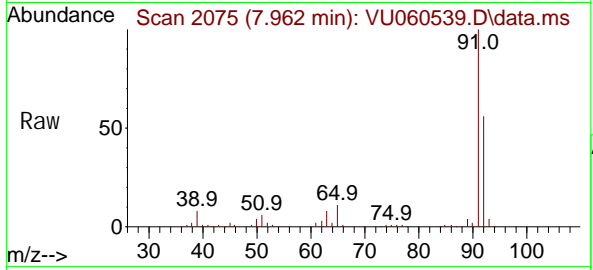




#42
 Tol uene
 Concen: 5.752 ug/L
 RT: 7.962 min Scan# 2075
 Delta R.T. 0.000 min
 Lab File: VU060539.D
 Acq: 24 Aug 2024 03:14

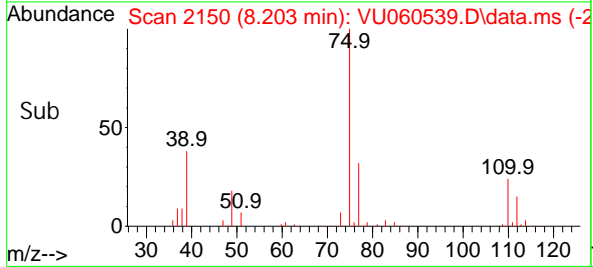
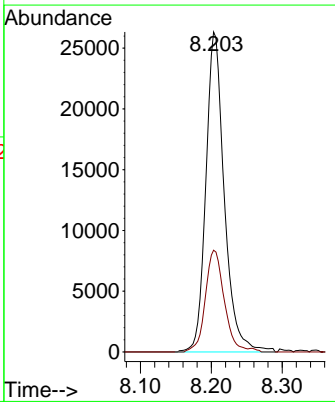
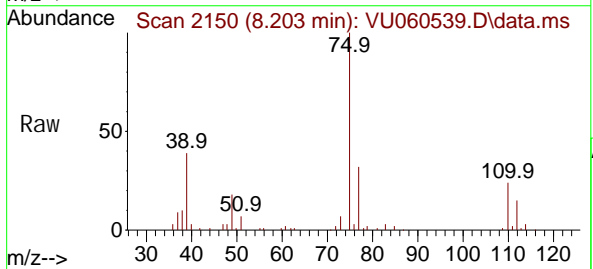
Instrument : MSVOA_U
 ClientSampleId :

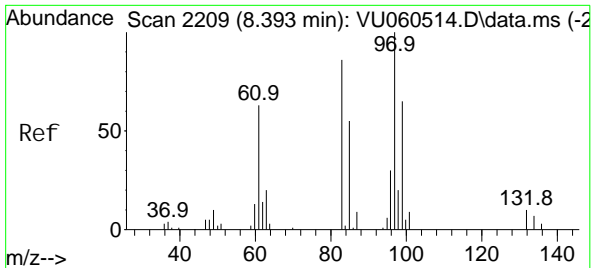
Tgt Ion: 91 Resp: 195530
 Ion Ratio Lower Upper
 91 100
 92 55.6 38.0 70.6



#44
 trans-1, 3-Di chl oroprene
 Concen: 4.795 ug/L
 RT: 8.203 min Scan# 2150
 Delta R.T. 0.000 min
 Lab File: VU060539.D
 Acq: 24 Aug 2024 03:14

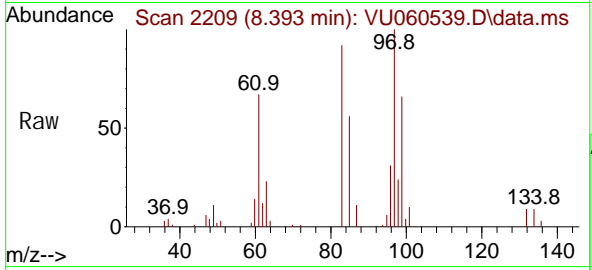
Tgt Ion: 75 Resp: 47574
 Ion Ratio Lower Upper
 75 100
 77 31.8 23.4 43.6





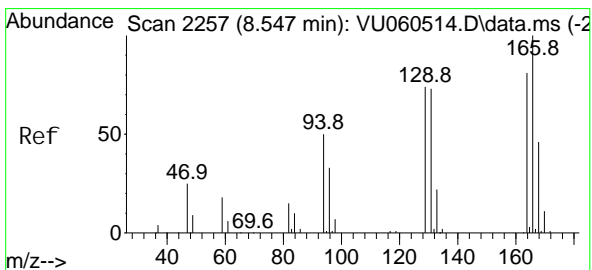
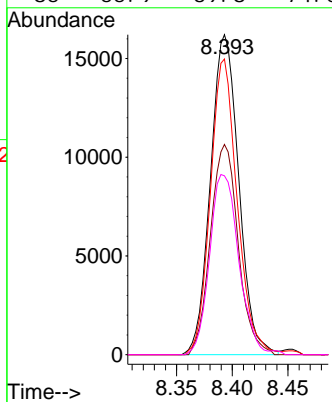
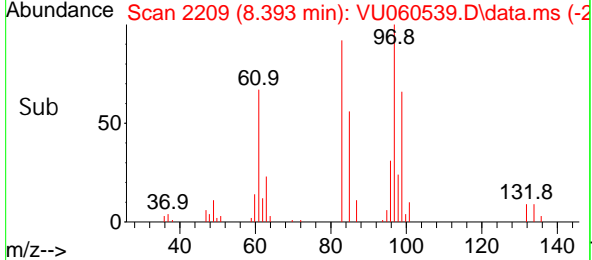
#45
 1,1,2-Trichloroethane
 Concen: 4.801 ug/L
 RT: 8.393 min Scan# 2209
 Delta R.T. 0.000 min
 Lab File: VU060539.D
 Acq: 24 Aug 2024 03:14

Instrument : MSVOA_U
 ClientSampleId :

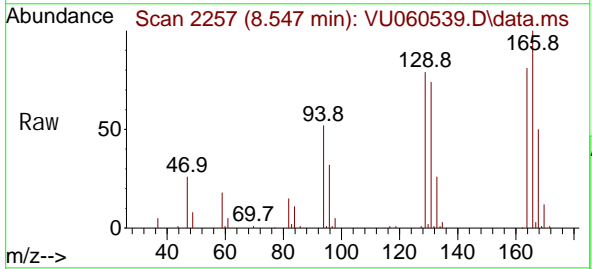


Tgt Ion: 97 Resp: 28662

Ion	Ratio	Lower	Upper
97	100		
99	65.7	42.4	78.8
83	92.4	64.0	119.0
85	55.9	39.8	74.0

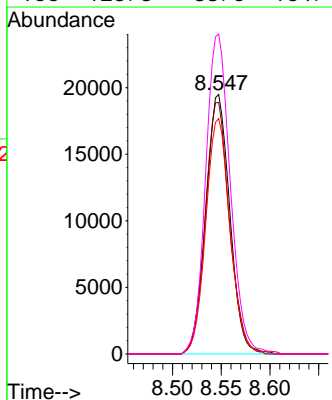
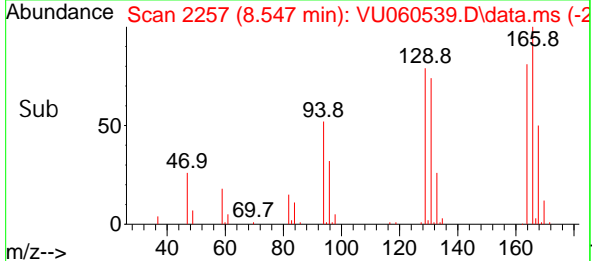


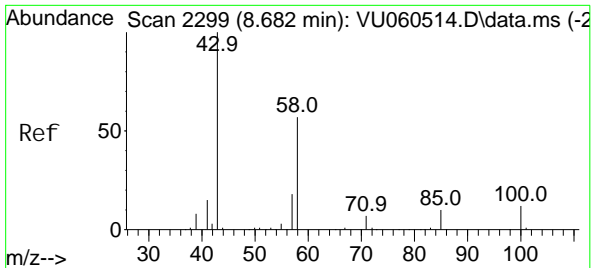
#47
 Tetrachloroethene
 Concen: 4.688 ug/L
 RT: 8.547 min Scan# 2257
 Delta R.T. 0.000 min
 Lab File: VU060539.D
 Acq: 24 Aug 2024 03:14



Tgt Ion: 164 Resp: 33506

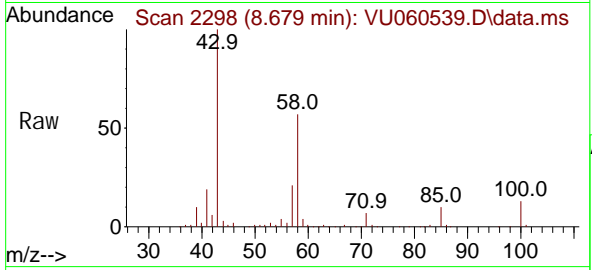
Ion	Ratio	Lower	Upper
164	100		
129	96.9	67.8	125.8
131	90.7	67.2	124.8
166	123.3	88.5	164.4





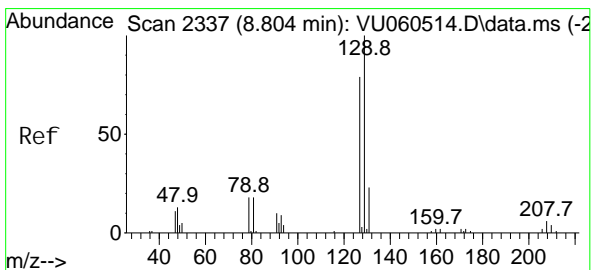
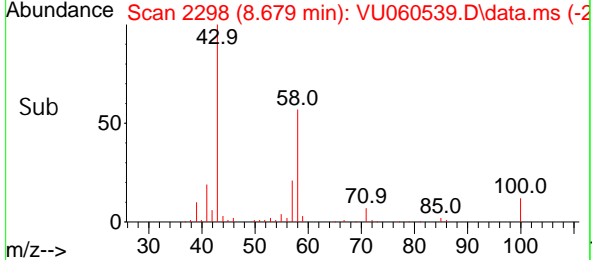
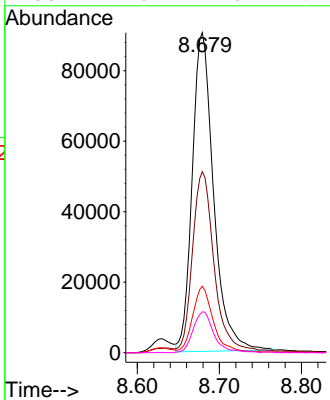
#48
 2-Hexanone
 Concen: 50.933 ug/L
 RT: 8.679 min Scan# 21
 Delta R.T. -0.003 min
 Lab File: VU060539.D
 Acq: 24 Aug 2024 03:14

Instrument :
 MSVOA_U
 ClientSampleId :



Tgt Ion: 43 Resp: 163624

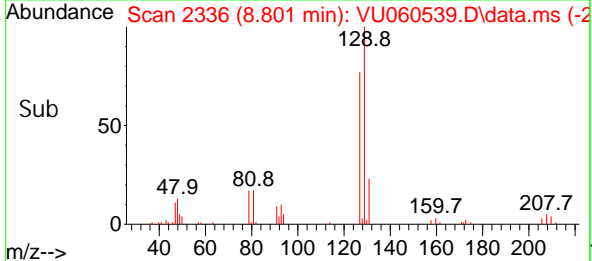
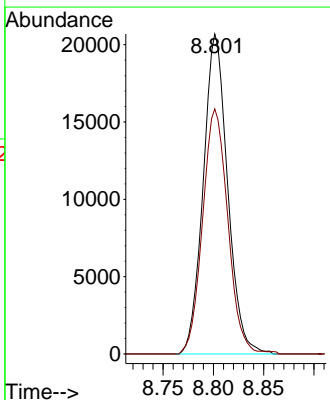
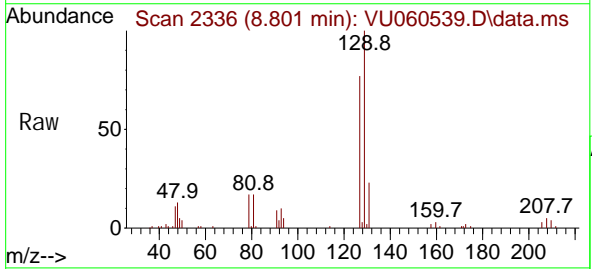
Ion	Ratio	Lower	Upper
43	100		
58	57.9	45.6	68.4
57	19.8	15.6	23.4
100	12.5	9.6	14.4

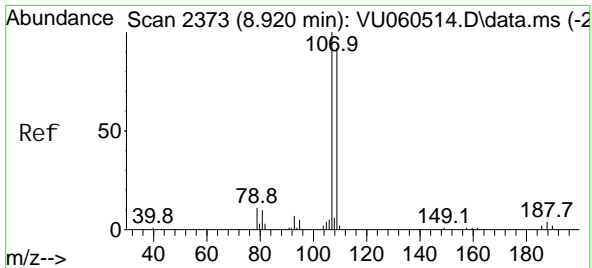


#49
 Di bromochloromethane
 Concen: 5.055 ug/L
 RT: 8.801 min Scan# 2336
 Delta R.T. -0.003 min
 Lab File: VU060539.D
 Acq: 24 Aug 2024 03:14

Tgt Ion: 129 Resp: 34945

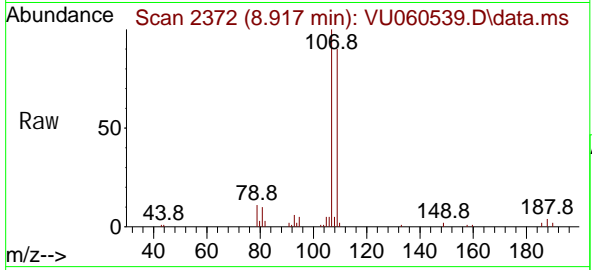
Ion	Ratio	Lower	Upper
129	100		
127	76.6	53.0	98.4



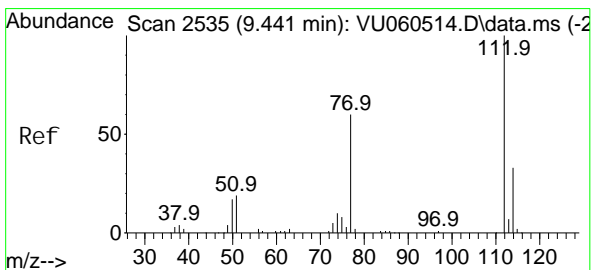
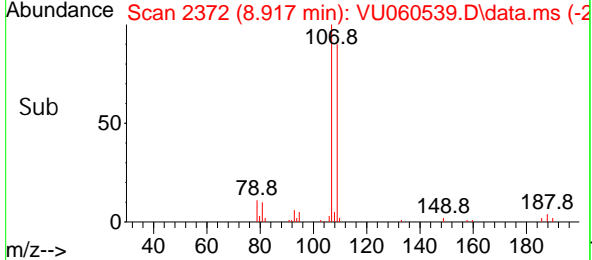
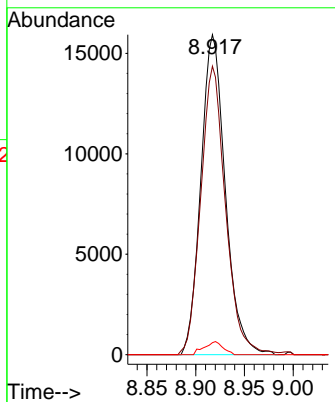


#50
 1, 2-Di bromoethane
 Concen: 5.083 ug/L
 RT: 8.917 min Scan# 21
 Delta R.T. -0.003 min
 Lab File: VU060539.D
 Acq: 24 Aug 2024 03:14

Instrument :
 MSVOA_U
 ClientSampleId :

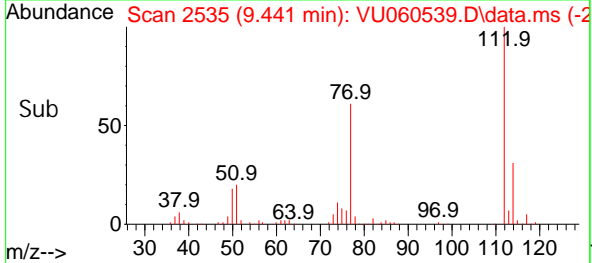
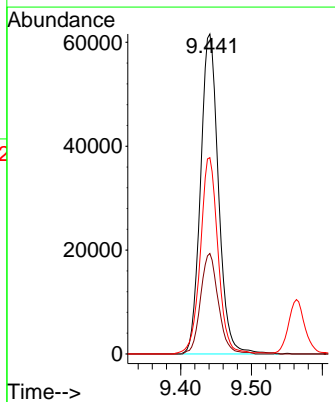
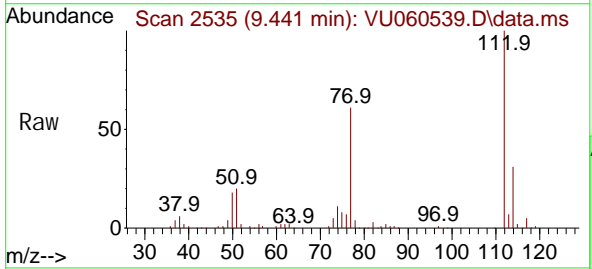


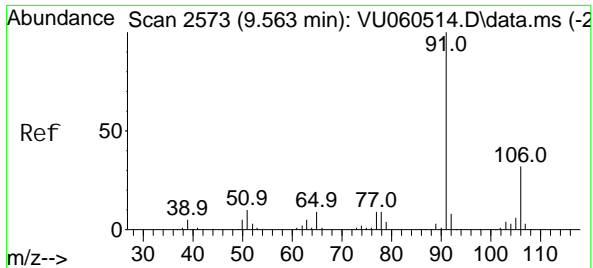
Tgt Ion: 107 Resp: 27859
 Ion Ratio Lower Upper
 107 100
 109 90.2 68.5 127.3
 188 3.7 3.9 5.9#



#51
 Chlorobenzene
 Concen: 4.920 ug/L
 RT: 9.441 min Scan# 2535
 Delta R.T. 0.000 min
 Lab File: VU060539.D
 Acq: 24 Aug 2024 03:14

Tgt Ion: 112 Resp: 108265
 Ion Ratio Lower Upper
 112 100
 114 31.4 21.9 40.7
 77 61.3 47.4 71.2

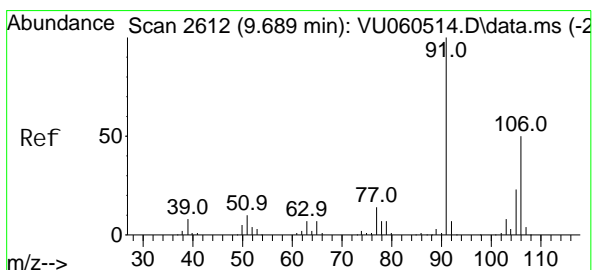
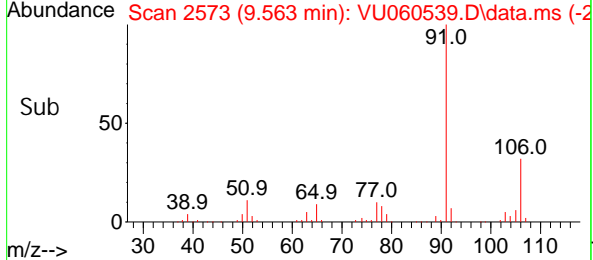
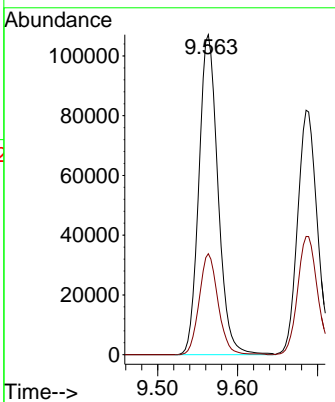
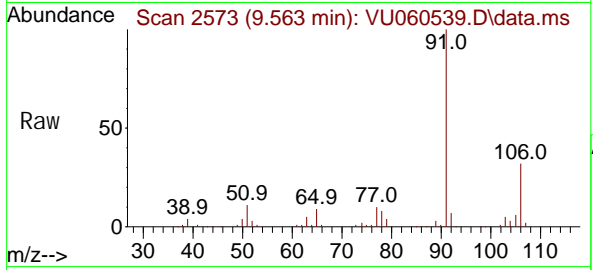




#52
 Ethyl benzene
 Concen: 4.942 ug/L
 RT: 9.563 min Scan# 21
 Delta R.T. 0.000 min
 Lab File: VU060539.D
 Acq: 24 Aug 2024 03:14

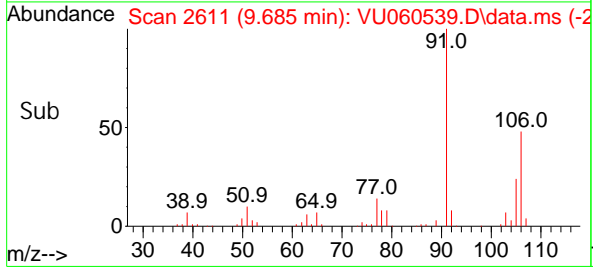
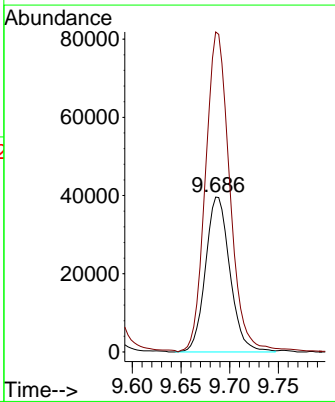
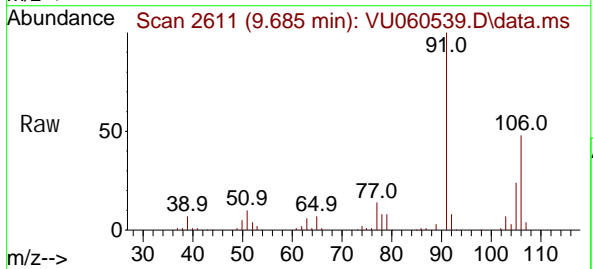
Instrument : MSVOA_U
 ClientSampleId :

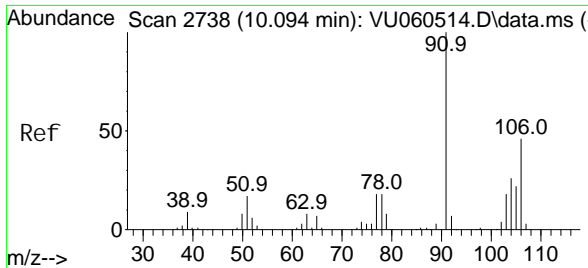
Tgt Ion: 91 Resp: 178033
 Ion Ratio Lower Upper
 91 100
 106 31.5 21.9 40.7



#53
 m, p-Xyl ene
 Concen: 5.159 ug/L
 RT: 9.685 min Scan# 2611
 Delta R.T. -0.003 min
 Lab File: VU060539.D
 Acq: 24 Aug 2024 03:14

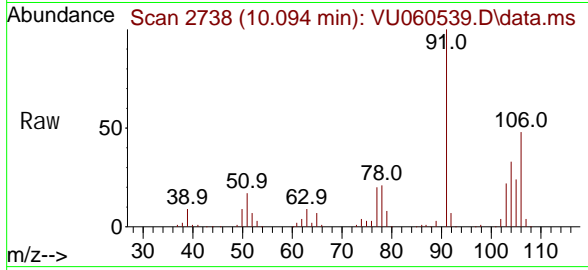
Tgt Ion: 106 Resp: 69086
 Ion Ratio Lower Upper
 106 100
 91 206.6 141.5 262.9



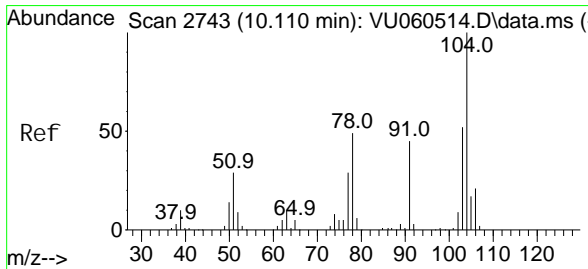
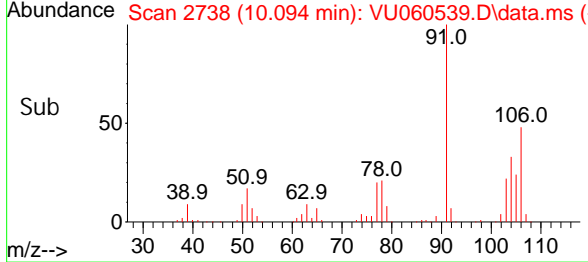
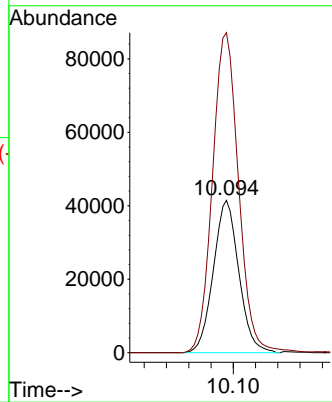


#54
 o-Xyl ene
 Concen: 4.800 ug/L
 RT: 10.094 min Scan# 2
 Delta R.T. 0.000 min
 Lab File: VU060539.D
 Acq: 24 Aug 2024 03:14

Instrument : MSVOA_U
 ClientSampleId :

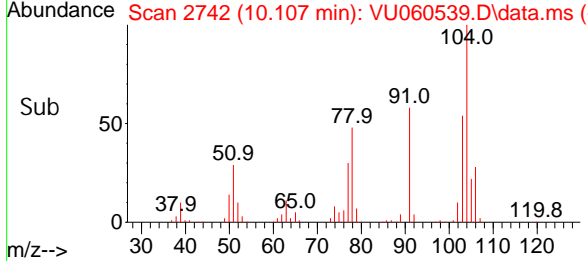
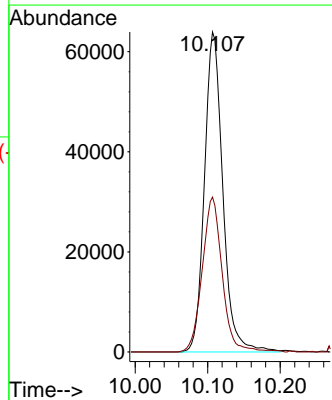
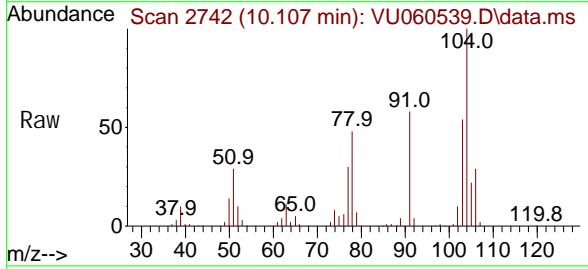


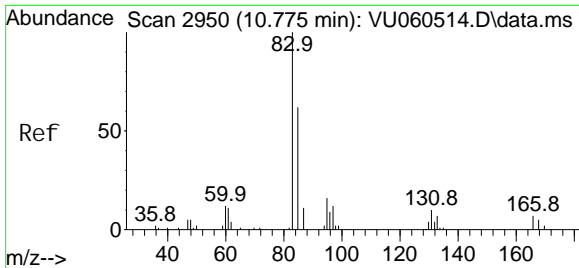
Tgt Ion: 106 Resp: 65805
 Ion Ratio Lower Upper
 106 100
 91 210.0 151.1 280.7



#55
 Styrene
 Concen: 5.012 ug/L
 RT: 10.107 min Scan# 2742
 Delta R.T. -0.003 min
 Lab File: VU060539.D
 Acq: 24 Aug 2024 03:14

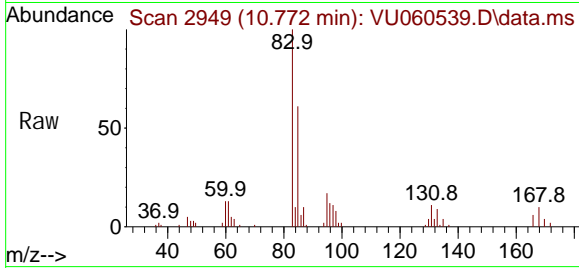
Tgt Ion: 104 Resp: 112595
 Ion Ratio Lower Upper
 104 100
 78 48.4 33.3 61.9



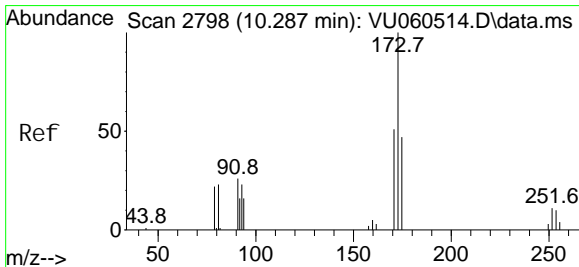
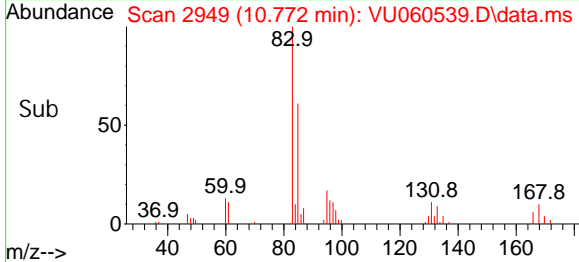
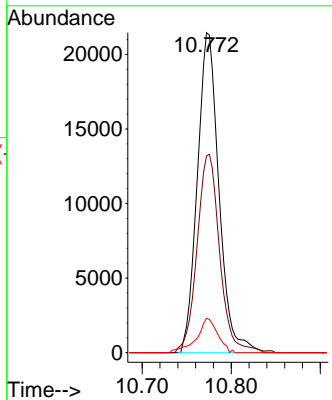


#57
 1,1,2,2-Tetrachloroethane
 Concen: 4.761 ug/L
 RT: 10.772 min Scan# 2949
 Delta R.T. -0.003 min
 Lab File: VU060539.D
 Acq: 24 Aug 2024 03:14

Instrument : MSVOA_U
 ClientSampleId :

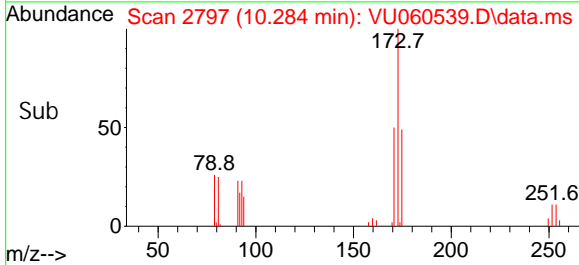
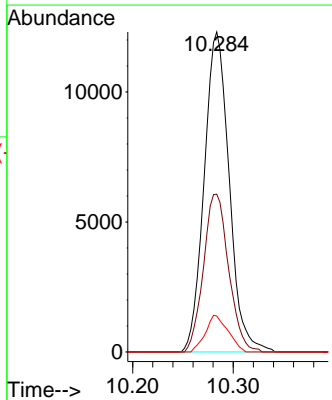
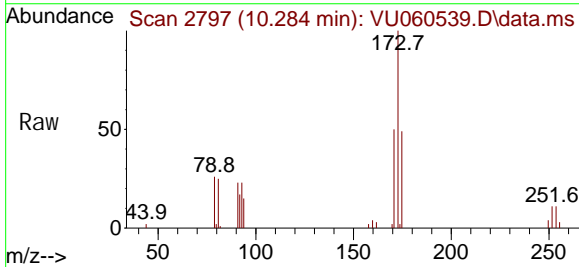


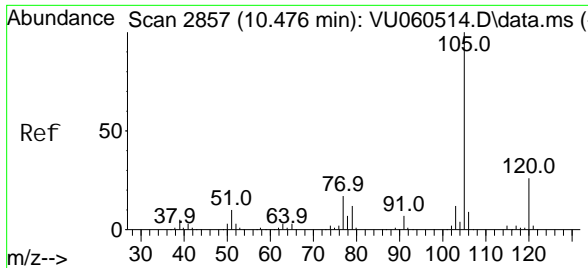
Tgt Ion: 83 Resp: 36291
 Ion Ratio Lower Upper
 83 100
 85 61.5 43.3 80.5
 131 10.7 8.9 13.3



#59
 Bromoform
 Concen: 4.782 ug/L
 RT: 10.284 min Scan# 2797
 Delta R.T. -0.003 min
 Lab File: VU060539.D
 Acq: 24 Aug 2024 03:14

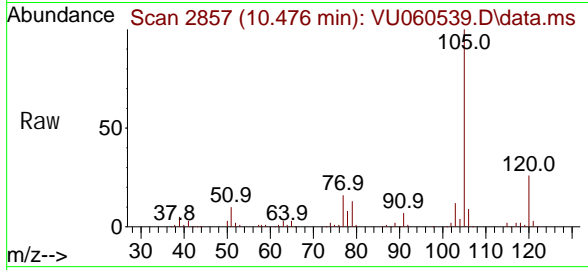
Tgt Ion: 173 Resp: 21234
 Ion Ratio Lower Upper
 173 100
 175 49.7 39.8 59.8
 254 10.3 8.2 12.2



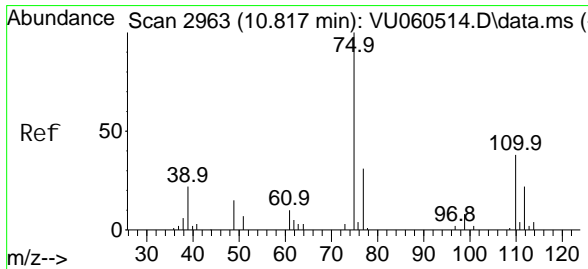
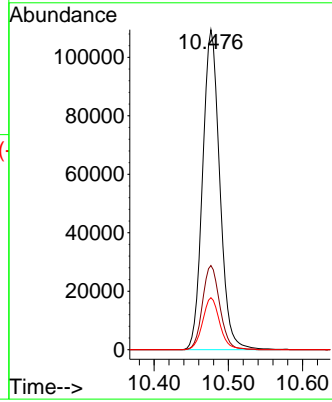
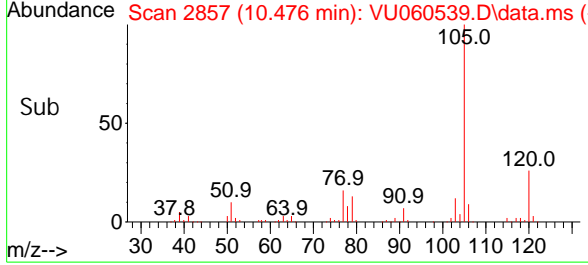


#60
 Isopropyl benzene
 Concen: 4.859 ug/L
 RT: 10.476 min Scan# 2857
 Delta R.T. 0.000 min
 Lab File: VU060539.D
 Acq: 24 Aug 2024 03:14

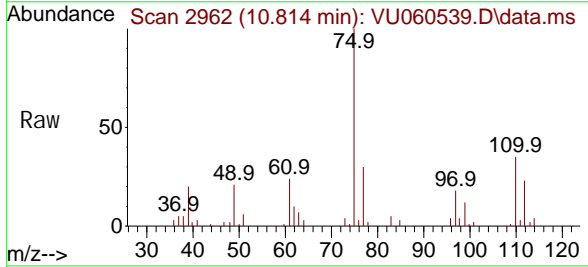
Instrument : MSVOA_U
 ClientSampleId :



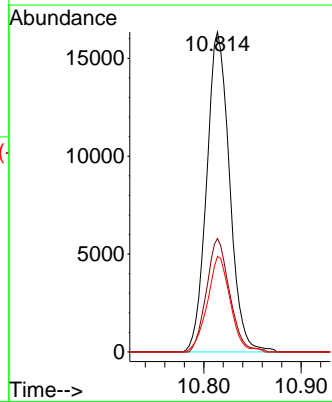
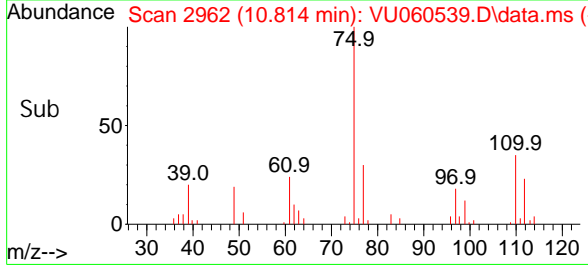
Tgt Ion: 105 Resp: 175410
 Ion Ratio Lower Upper
 105 100
 120 26.5 21.0 31.4
 77 16.3 13.0 19.4

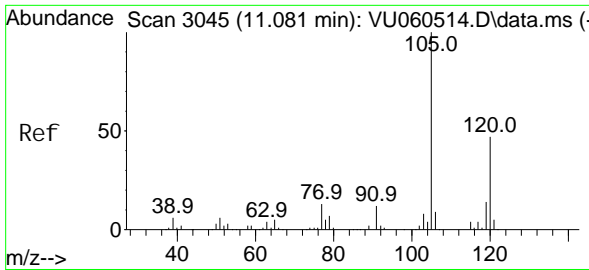


#61
 1,2,3-Trichloropropane
 Concen: 5.127 ug/L
 RT: 10.814 min Scan# 2962
 Delta R.T. -0.003 min
 Lab File: VU060539.D
 Acq: 24 Aug 2024 03:14



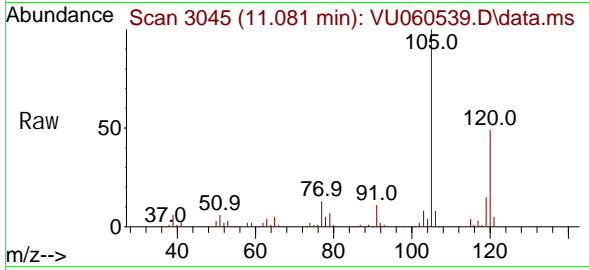
Tgt Ion: 75 Resp: 26724
 Ion Ratio Lower Upper
 75 100
 110 35.7 30.2 45.4
 77 29.8 25.4 38.2



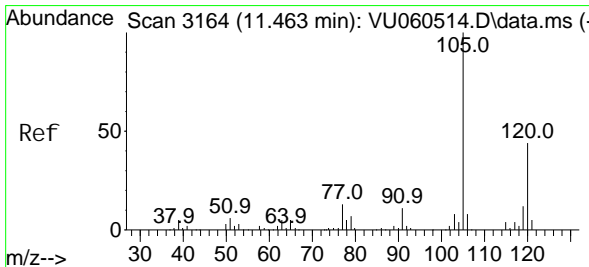
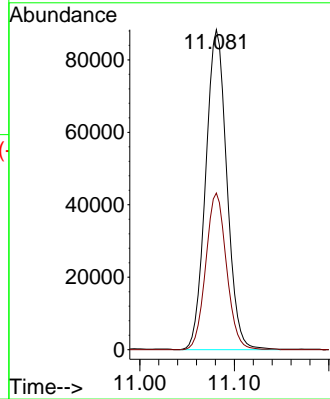
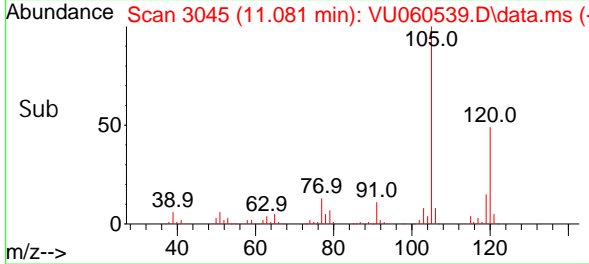


#62
 1, 3, 5-Tri methyl benzene
 Concen: 5.102 ug/L
 RT: 11.081 min Scan# 3045
 Delta R.T. 0.000 min
 Lab File: VU060539.D
 Acq: 24 Aug 2024 03:14

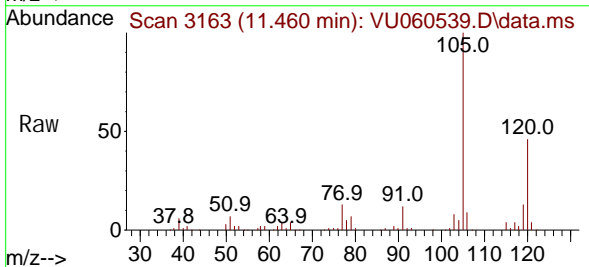
Instrument : MSVOA_U
 ClientSampleId :



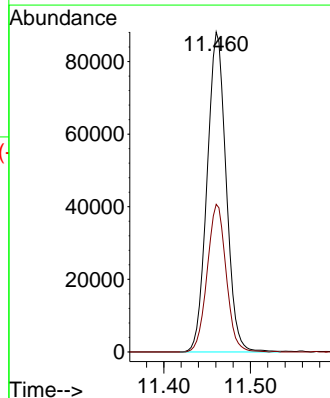
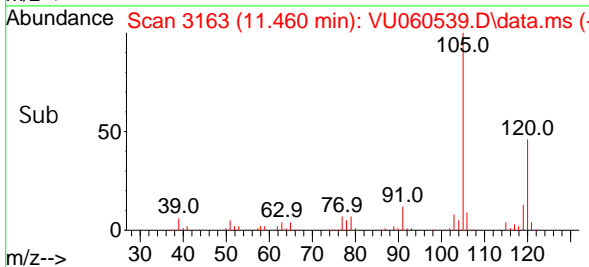
Tgt Ion: 105 Resp: 137277
 Ion Ratio Lower Upper
 105 100
 120 48.0 37.4 56.0

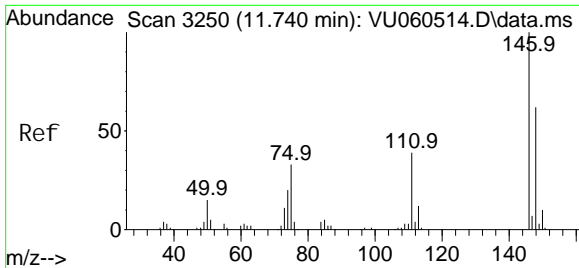


#63
 1, 2, 4-Tri methyl benzene
 Concen: 4.903 ug/L
 RT: 11.460 min Scan# 3163
 Delta R.T. -0.003 min
 Lab File: VU060539.D
 Acq: 24 Aug 2024 03:14



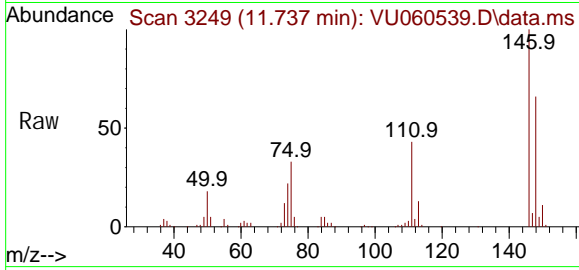
Tgt Ion: 105 Resp: 134566
 Ion Ratio Lower Upper
 105 100
 120 45.9 35.7 53.5



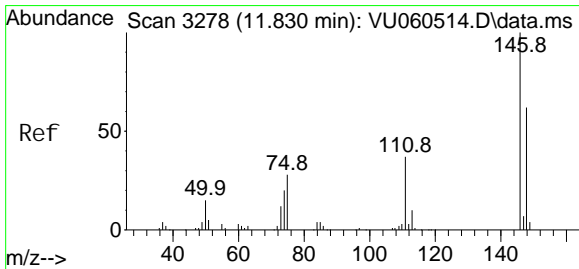
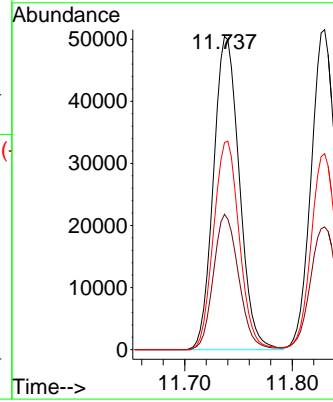
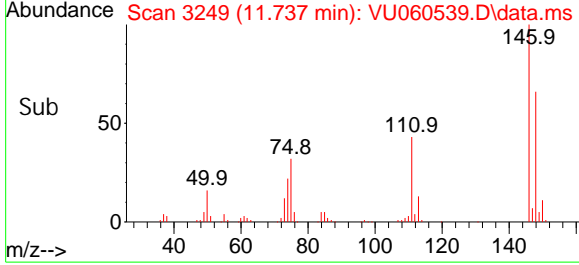


#64
 1,3-Di chl orobenzene
 Concen: 4.771 ug/L
 RT: 11.737 min Scan# 3249
 Delta R.T. -0.003 min
 Lab File: VU060539.D
 Acq: 24 Aug 2024 03:14

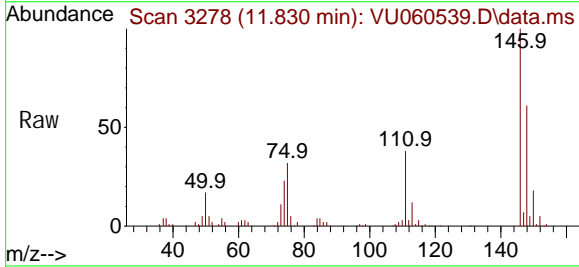
Instrument : MSVOA_U
 ClientSampleId :



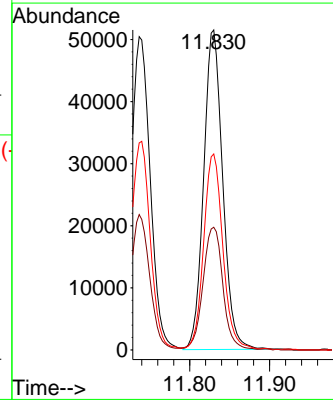
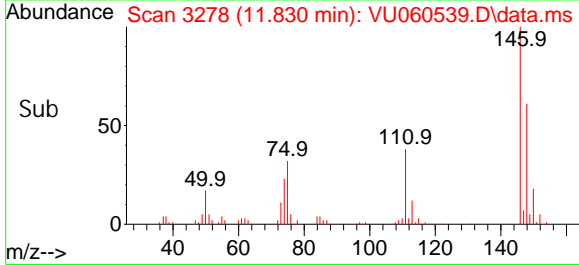
Tgt Ion: 146 Resp: 84287
 Ion Ratio Lower Upper
 146 100
 111 43.2 27.9 51.9
 148 66.1 43.5 80.7

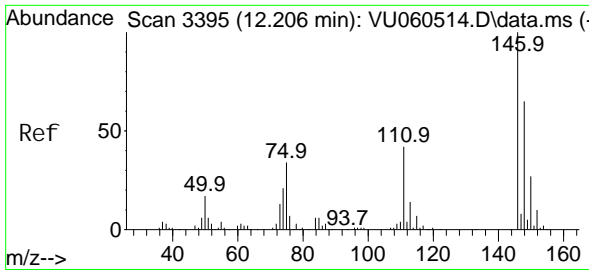


#65
 1,4-Di chl orobenzene
 Concen: 4.769 ug/L
 RT: 11.830 min Scan# 3278
 Delta R.T. 0.000 min
 Lab File: VU060539.D
 Acq: 24 Aug 2024 03:14



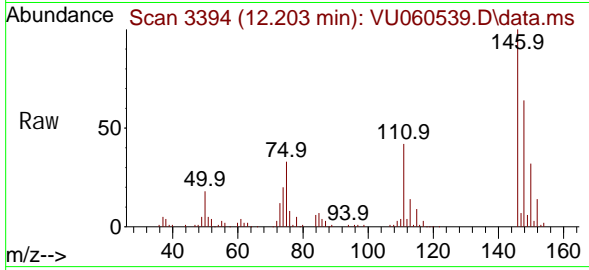
Tgt Ion: 146 Resp: 85497
 Ion Ratio Lower Upper
 146 100
 111 38.3 27.2 50.4
 148 61.3 43.6 81.0



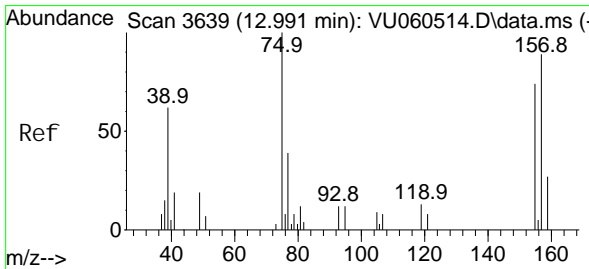
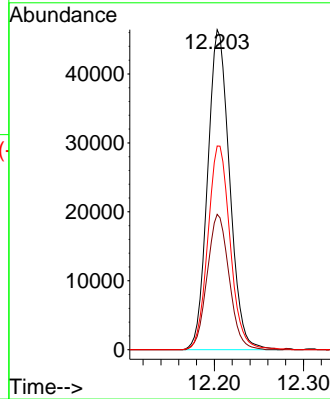
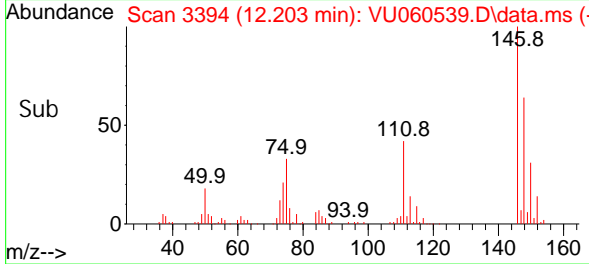


#67
 1, 2-Di chl orobenzene
 Concen: 4.788 ug/L
 RT: 12.203 min Scan# 31
 Delta R.T. -0.003 min
 Lab File: VU060539.D
 Acq: 24 Aug 2024 03:14

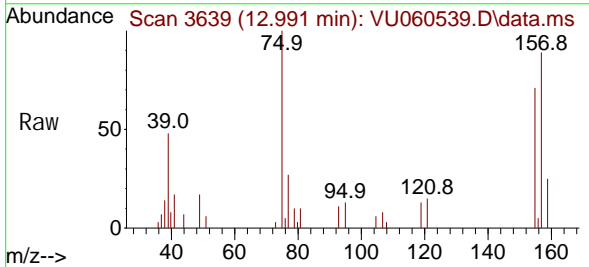
Instrument : MSVOA_U
 ClientSampleId :



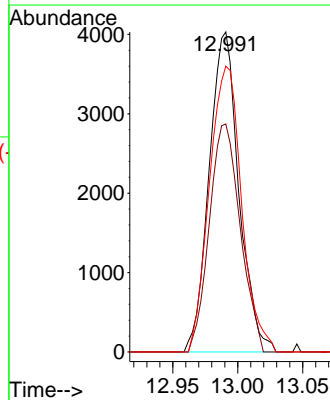
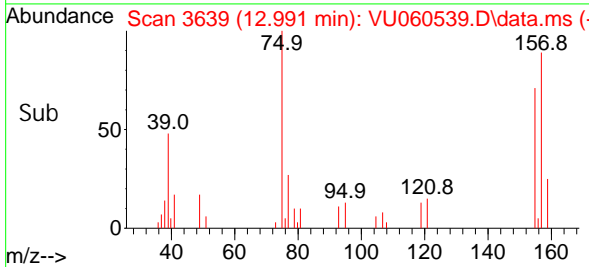
Tgt Ion: 146 Resp: 79351
 Ion Ratio Lower Upper
 146 100
 111 42.3 34.6 52.0
 148 63.7 51.4 77.2

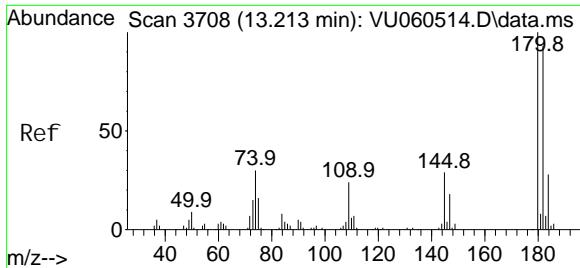


#68
 1, 2-Di bromo-3- chl oropropane
 Concen: 5.460 ug/L
 RT: 12.991 min Scan# 3639
 Delta R.T. 0.000 min
 Lab File: VU060539.D
 Acq: 24 Aug 2024 03:14



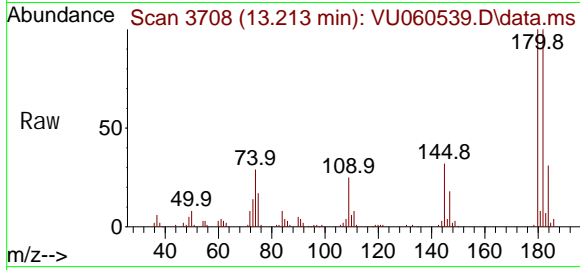
Tgt Ion: 75 Resp: 6424
 Ion Ratio Lower Upper
 75 100
 155 71.2 62.7 94.1
 157 89.3 70.4 105.6





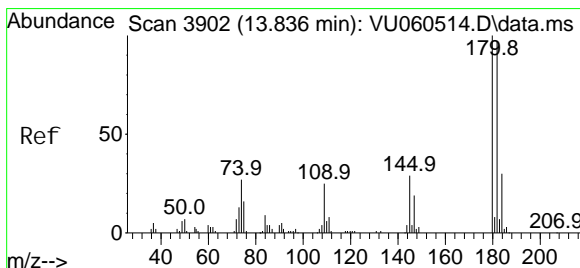
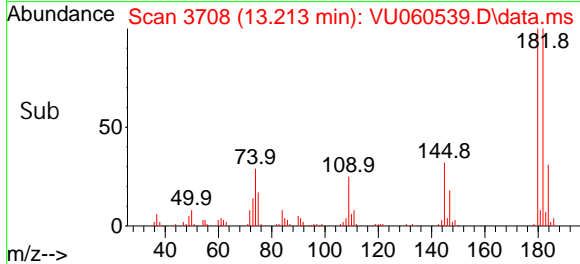
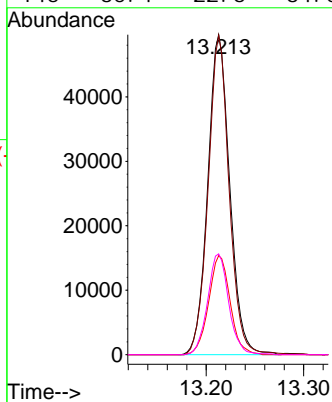
#69
 1, 3, 5-Tri chlorobenzene
 Concen: 5.706 ug/L
 RT: 13.213 min Scan# 31
 Delta R.T. 0.000 min
 Lab File: VU060539.D
 Acq: 24 Aug 2024 03:14

Instrument :
 MSVOA_U
 ClientSampleId :



Tgt Ion: 180 Resp: 77728

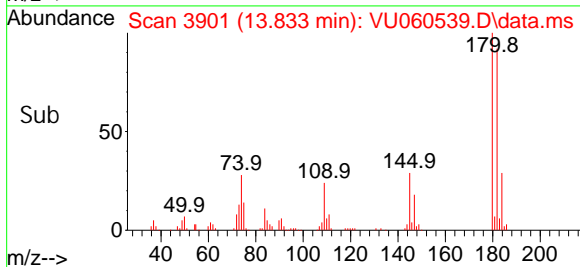
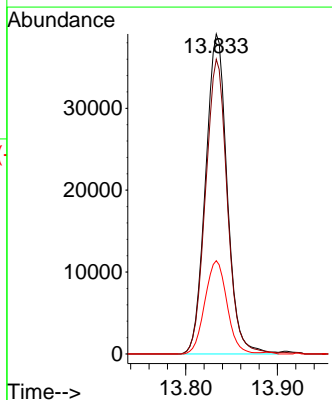
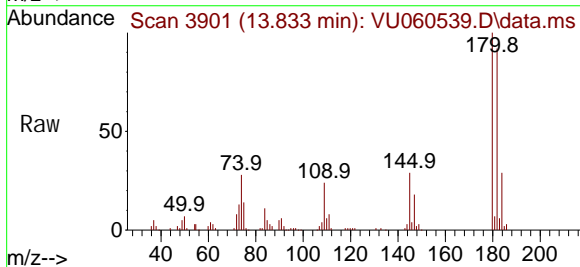
Ion	Ratio	Lower	Upper
180	100		
182	95.6	77.6	116.4
184	30.3	24.9	37.3
145	30.4	22.6	34.0

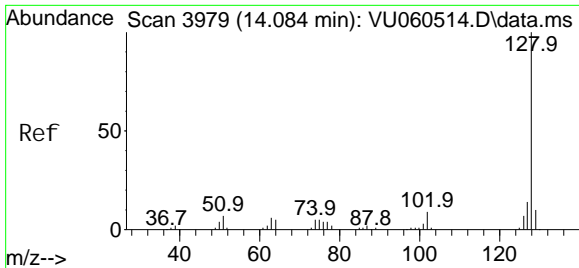


#70
 1, 2, 4-tri chlorobenzene
 Concen: 5.826 ug/L
 RT: 13.833 min Scan# 3901
 Delta R.T. -0.003 min
 Lab File: VU060539.D
 Acq: 24 Aug 2024 03:14

Tgt Ion: 180 Resp: 64035

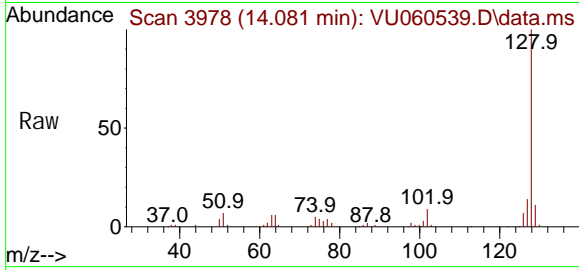
Ion	Ratio	Lower	Upper
180	100		
182	92.5	77.3	115.9
145	29.8	23.9	35.9





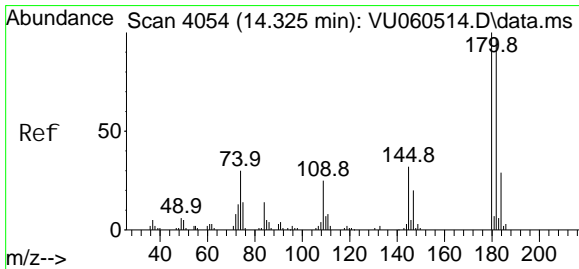
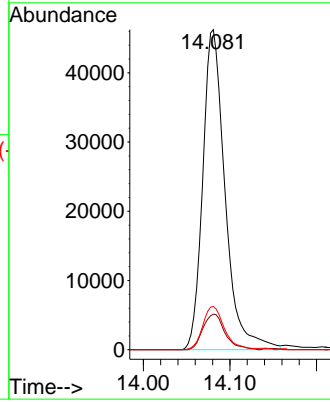
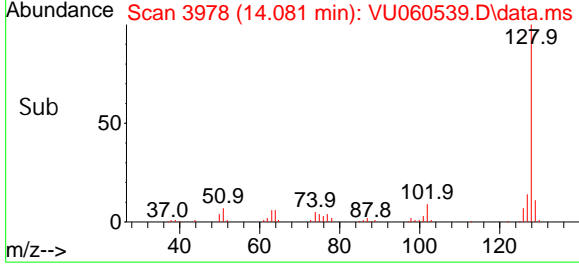
#71
 Naphthalene
 Concen: 5.913 ug/L
 RT: 14.081 min Scan# 3978
 Delta R.T. -0.003 min
 Lab File: VU060539.D
 Acq: 24 Aug 2024 03:14

Instrument : MSVOA_U
 ClientSampleId :

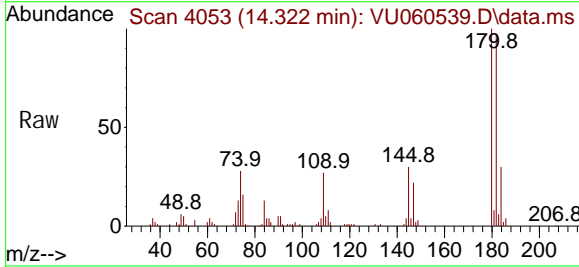


Tgt Ion: 128 Resp: 83024

Ion	Ratio	Lower	Upper
128	100		
129	10.9	8.5	12.7
127	13.1	10.2	15.2



#72
 1,2,3-Trichlorobenzene
 Concen: 6.120 ug/L
 RT: 14.322 min Scan# 4053
 Delta R.T. -0.003 min
 Lab File: VU060539.D
 Acq: 24 Aug 2024 03:14



Tgt Ion: 180 Resp: 56293

Ion	Ratio	Lower	Upper
180	100		
182	95.3	76.0	114.0
145	31.4	24.3	36.5

