

Data Path : Z:\voasrv\HPCHEM1\MSVOA_U\Data\VU082324\
 Data File : VU060528.D
 Acq On : 23 Aug 2024 22:46
 Operator : MD/SY
 Sample : P3711-04
 Misc : 25.0mL/MSVOA_U/WATER
 ALS Vial : 24 Sample Multiplier: 1

Instrument :
 MSVOA_U
 ClientSampleId :
 E2496

Integration Parameters: rteint.p

Integrator: RTE
 Smoothing : ON Filtering: 5
 Sampling : 1 Min Area: 3 % of largest Peak
 Start Thrs: 0.1 Max Peaks: 100
 Stop Thrs : 0 Peak Location: TOP

If leading or trailing edge < 100 prefer < Baseline drop else tangent >
 Peak separation: 5

Method : Z:\voasrv\HPCHEM1\MSVOA_U\Method\SFAMUTR082324WMA.M
 Title : TRACE VOA SFAM1.0

Signal : TIC: VU060528.D\data.ms

peak #	R.T. min	first scan	max scan	last scan	PK TY	peak height	corr. area	corr. % max.	% of total
1	1.596	87	95	107	rVB	35887	41297	12.35%	1.670%
2	1.727	128	136	156	rVB	31409	40403	12.08%	1.634%
3	1.911	184	193	205	rBV	33284	43750	13.08%	1.769%
4	2.560	382	395	412	rBV	59430	97977	29.29%	3.962%
5	3.178	575	587	600	rVB3	3624	7888	2.36%	0.319%
6	3.686	738	745	748	rBV4	3175	3734	1.12%	0.151%
7	4.634	1027	1040	1075	rBV	34375	121949	36.46%	4.932%
8	5.055	1158	1171	1190	rBV	56099	122700	36.69%	4.962%
9	5.718	1358	1377	1401	rBV4	126326	334452	100.00%	13.525%
10	6.242	1528	1540	1560	rBV	102853	202030	60.41%	8.170%
11	6.685	1665	1678	1697	rBV2	67619	134209	40.13%	5.427%
12	7.563	1935	1951	1968	rBV	31228	57823	17.29%	2.338%
13	7.894	2042	2054	2077	rBV	108898	199043	59.51%	8.049%
14	8.177	2132	2142	2158	rBV	17263	30275	9.05%	1.224%
15	8.631	2272	2283	2314	rBV	130667	272364	81.44%	11.014%
16	9.412	2515	2526	2550	rBV	156542	269171	80.48%	10.885%
17	10.750	2930	2942	2960	rVB	54137	88527	26.47%	3.580%
18	10.888	2976	2985	2995	rBV3	3814	5563	1.66%	0.225%
19	11.807	3259	3271	3292	rBV	128258	216286	64.67%	8.747%
20	12.187	3377	3389	3409	rBV	108731	183371	54.83%	7.415%

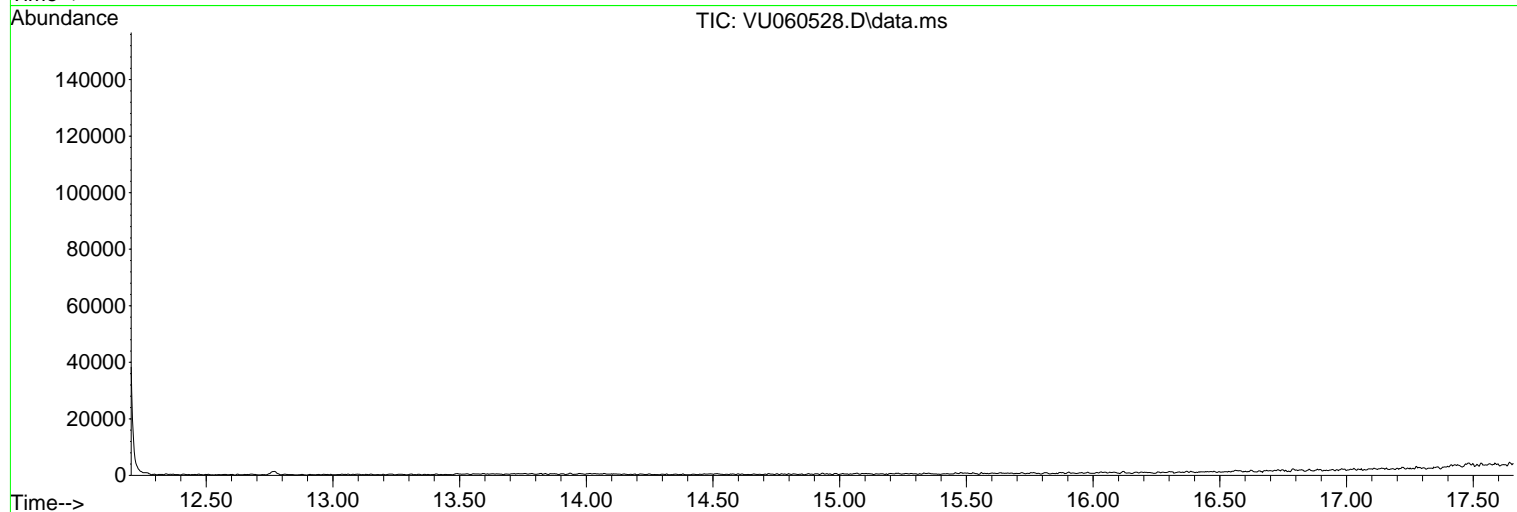
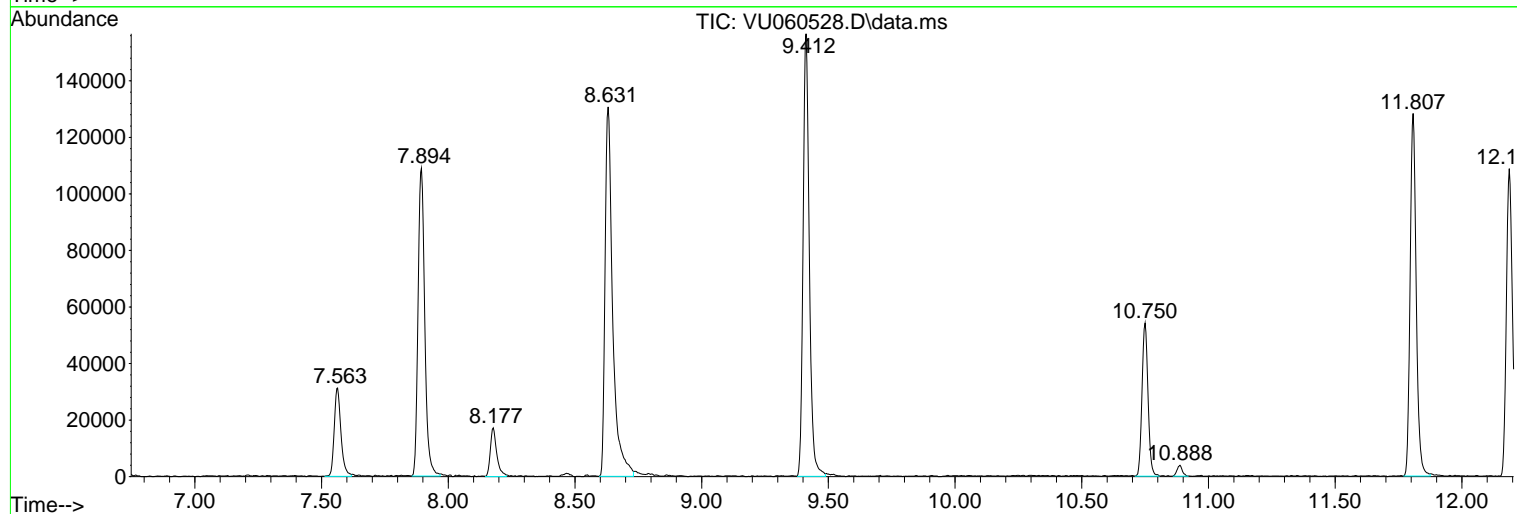
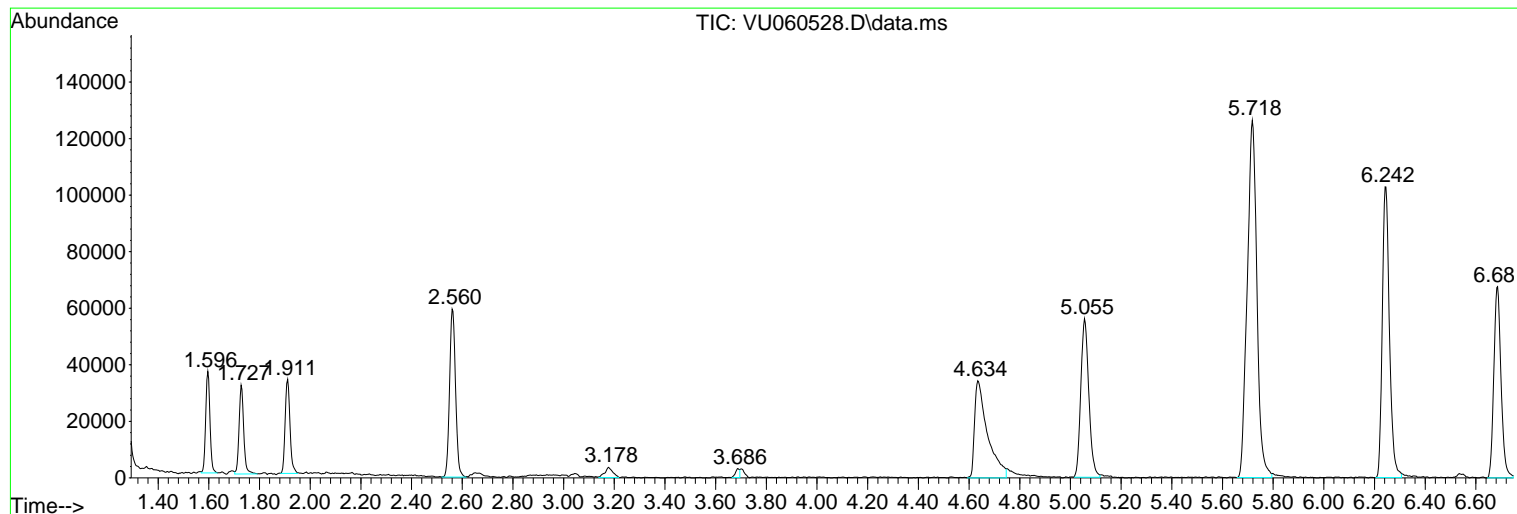
Sum of corrected areas: 2472812

Data Path : Z:\voasrv\HPCHEM1\MSVOA_U\Data\VU082324\
Data File : VU060528.D
Acq On : 23 Aug 2024 22:46
Operator : MD/SY
Sample : P3711-04
Misc : 25.0mL/MSVOA_U/WATER
ALS Vial : 24 Sample Multiplier: 1

Instrument :
MSVOA_U
ClientSampleId :
E2496

Quant Method : Z:\voasrv\HPCHEM1\MSVOA_U\Method\SFAMUTR082324WMA.M
Quant Title : TRACE VOA SFAM1.0

TIC Library : C:\Database\NIST20.L
TIC Integration Parameters: LSCINT.P



Library Search Compound Report

Data Path : Z:\voasrv\HPCHEM1\MSVOA_U\Data\VU082324\
Data File : VU060528.D
Acq On : 23 Aug 2024 22:46
Operator : MD/SY
Sample : P3711-04
Misc : 25.0mL/MSVOA_U/WATER
ALS Vial : 24 Sample Multiplier: 1

Instrument :
MSVOA_U
ClientSampleId :
E2496

Quant Method : Z:\voasrv\HPCHEM1\MSVOA_U\Method\SFAMUTR082324WMA.M
Quant Title : TRACE VOA SFAM1.0

TIC Library : C:\Database\NIST20.L
TIC Integration Parameters: LSCINT.P

No Library Search Compounds Detected

Data Path : Z:\voasrv\HPCHEM1\MSVOA_U\Data\VU082324\
Data File : VU060528.D
Acq On : 23 Aug 2024 22:46
Operator : MD/SY
Sample : P3711-04
Misc : 25.0mL/MSVOA_U/WATER
ALS Vial : 24 Sample Multiplier: 1

Instrument :
MSVOA_U
ClientSampleId :
E2496

Quant Method : Z:\voasrv\HPCHEM1\MSVOA_U\Method\SFAMUTR082324WMA.M
Quant Title : TRACE VOA SFAM1.0

TIC Library : C:\Database\NIST0.L
TIC Integration Parameters: LSCINT.P

TIC Top Hit name	RT	EstConc	Units	Response	--Internal Standard--		
					#	RT	Resp Conc
