

Data Path : Z:\VOASRV\HPCHEM1\MSVOA_U\DATA\VU083119\
 Data File : VU034095.D
 Acq On : 30 Aug 2019 13:58
 Operator : JC/SP
 Sample : K4555-14
 Misc : 5.0mL/MSVOA_U/WATER
 ALS Vial : 14 Sample Multiplier: 1

Instrument :
 MSVOA_U
 ClientSampleId :
 TW-6

Quant Time: Aug 31 03:38:42 2019
 Quant Method : Z:\VOASRV\HPCHEM1\MSVOA_U\METHOD\82U082919W.M
 Quant Title : SW846 8260
 QLast Update : Thu Aug 29 04:11:12 2019
 Response via : Initial Calibration

Internal Standards	R.T.	QIon	Response	Conc	Units	Dev(Min)
1) Pentafluorobenzene	4.96	168	452215	50.00	ug/l	0.00
34) 1,4-Difluorobenzene	5.86	114	735235	50.00	ug/l	0.00
63) Chlorobenzene-d5	9.07	117	702073	50.00	ug/l	0.00
72) 1,4-Dichlorobenzene-d4	11.47	152	356970	50.00	ug/l	0.00

System Monitoring Compounds

33) 1,2-Dichloroethane-d4	5.29	65	286204	49.39	ug/l	0.00
Spiked Amount	50.000		Recovery	=	98.78%	
35) Dibromofluoromethane	4.86	113	238361	46.74	ug/l	0.00
Spiked Amount	50.000		Recovery	=	93.48%	
50) Toluene-d8	7.55	98	923099	48.34	ug/l	0.00
Spiked Amount	50.000		Recovery	=	96.68%	
62) 4-Bromofluorobenzene	10.29	95	327185	44.05	ug/l	0.00
Spiked Amount	50.000		Recovery	=	88.10%	

Target Compounds

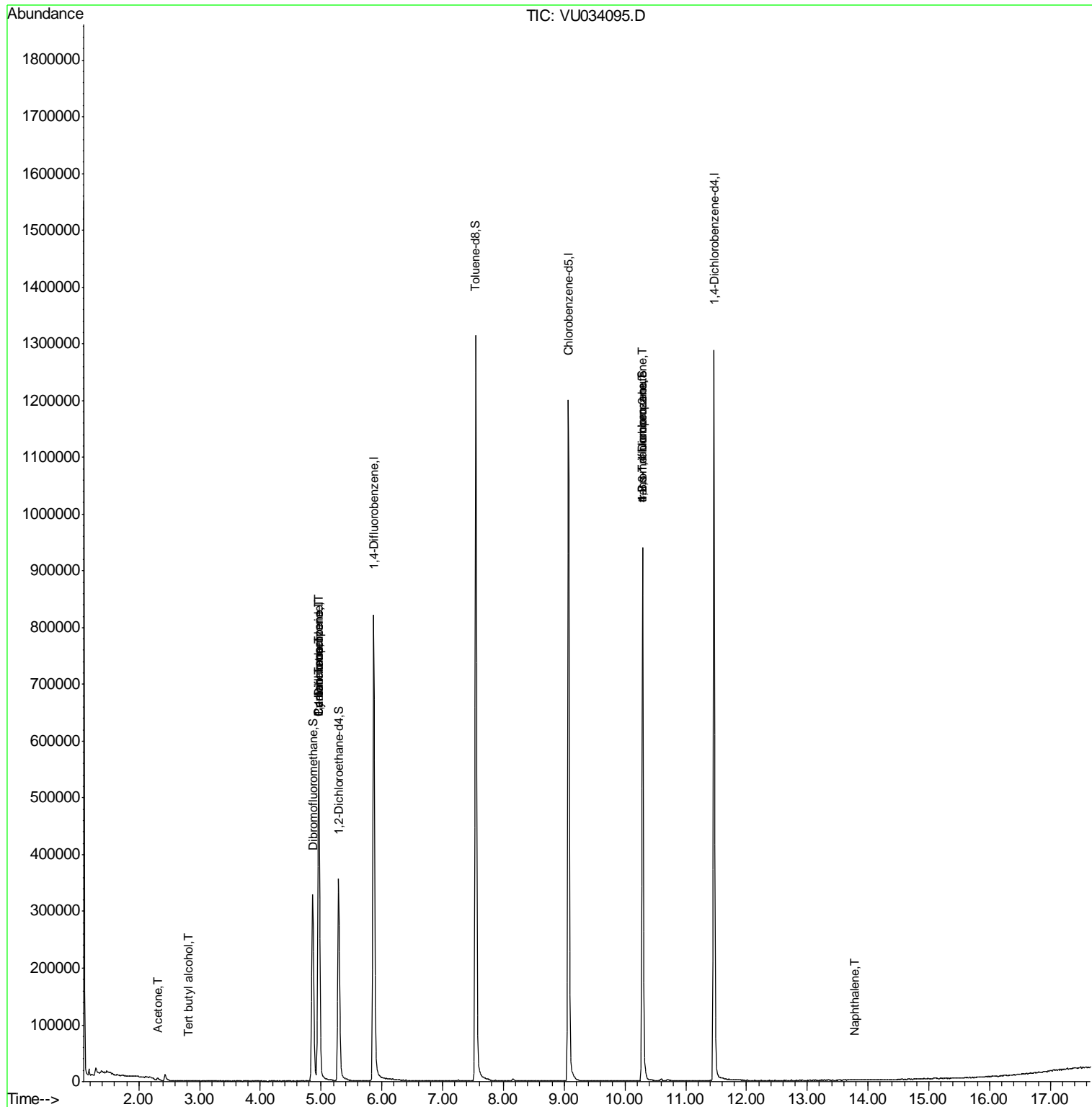
					Qvalue
3) Chloromethane	1.32	50	989	Below Cal	# 70
5) Bromomethane	1.64	94	762	Below Cal	# 80
11) Tert butyl alcohol	2.81	59	485	0.363 ug/l	# 73
16) Acetone	2.31	43	4848	1.640 ug/l	# 96
31) Cyclohexane	4.96	56	8229	0.951 ug/l	# 1
36) 1,1-Dichloropropene	4.96	75	34257	4.926 ug/l	# 49
38) Carbon Tetrachloride	4.96	117	43059	6.414 ug/l	# 16
76) 1,2,3-Trichloropropane	10.29	75	157649	19.595 ug/l	# 37
81) trans-1,4-Dichloro-2-buten	10.29	75	157649	65.980 ug/l	# 100
95) Naphthalene	13.79	128	807	1.825 ug/l	# 70

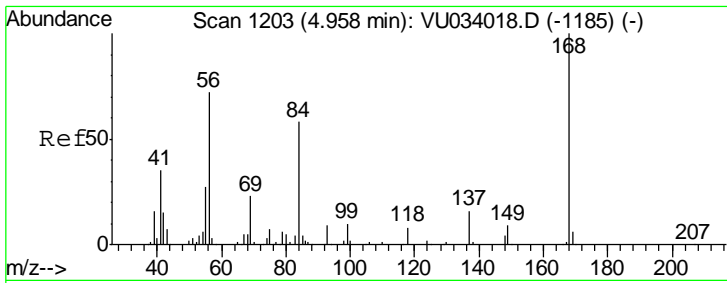
(#) = qualifier out of range (m) = manual integration (+) = signals summed

Data Path : Z:\VOASRV\HPCHEM1\MSVOA_U\DATA\VU083119\
 Data File : VU034095.D
 Acq On : 30 Aug 2019 13:58
 Operator : JC/SP
 Sample : K4555-14
 Misc : 5.0mL/MSVOA_U/WATER
 ALS Vial : 14 Sample Multiplier: 1

Instrument :
 MSVOA_U
 Client Sampled :
 TW-6

Quant Time: Aug 31 03:38:42 2019
 Quant Method : Z:\VOASRV\HPCHEM1\MSVOA_U\METHOD\82U082919W.M
 Quant Title : SW846 8260
 QLast Update : Thu Aug 29 04:11:12 2019
 Response via : Initial Calibration

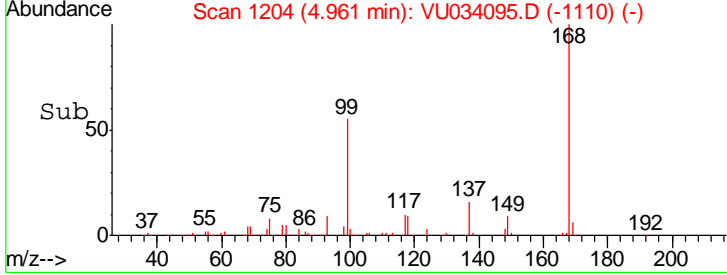
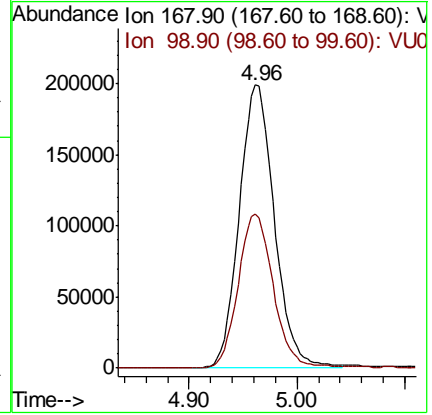
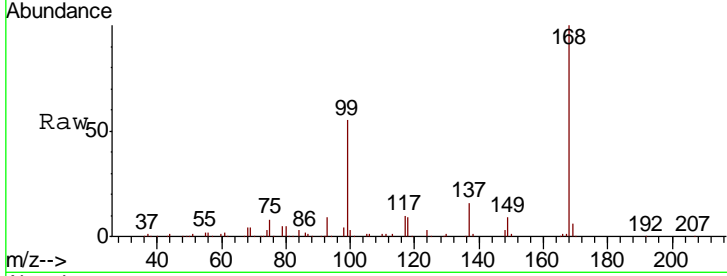




#1
 Pentafluorobenzene
 Concen: 50.000 ug/l
 RT: 4.96 min Scan# 1204
 Delta R.T. 0.00 min
 Lab File: VU034095.D
 Acq: 30 Aug 2019 13:58

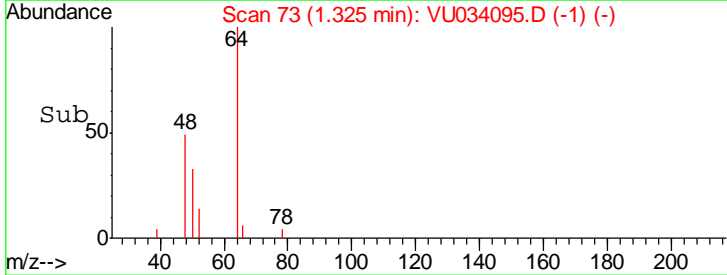
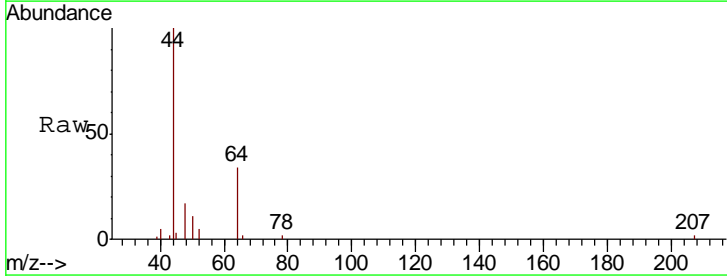
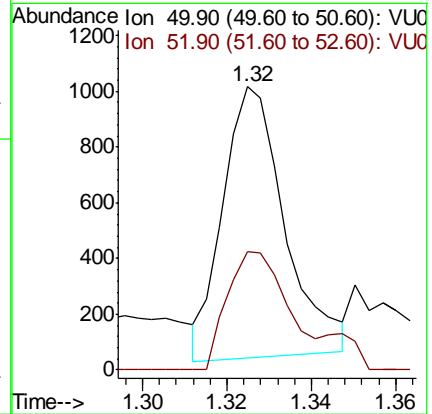
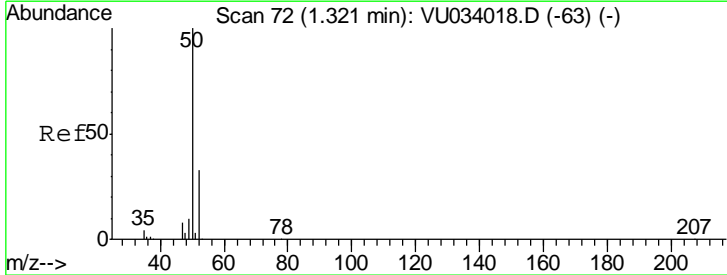
Instrument : MSVOA_U
 ClientSampled : TW-6

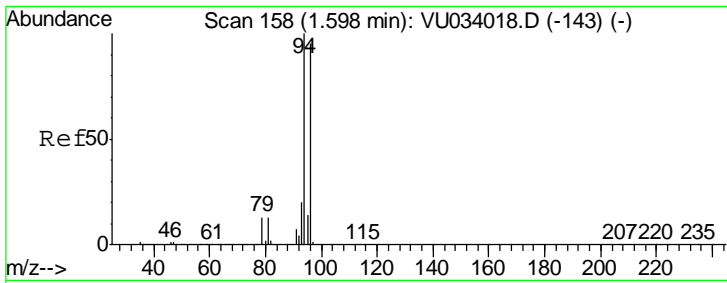
Tgt Ion: 168 Resp: 452215
 Ion Ratio Lower Upper
 168 100
 99 54.7 42.3 63.5



#3
 Chloromethane
 Concen: Below Cal
 RT: 1.32 min Scan# 73
 Delta R.T. 0.00 min
 Lab File: VU034095.D
 Acq: 30 Aug 2019 13:58

Tgt Ion: 50 Resp: 989
 Ion Ratio Lower Upper
 50 100
 52 49.9 26.2 39.4#

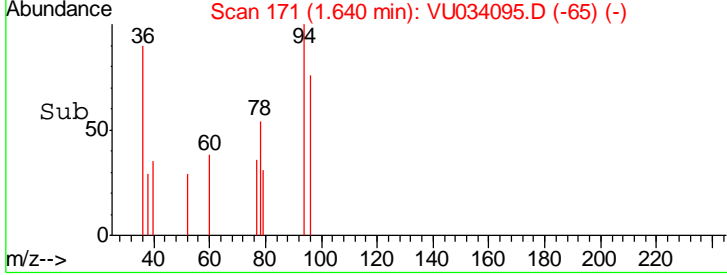
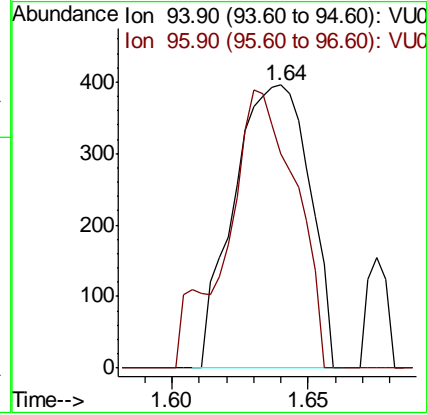
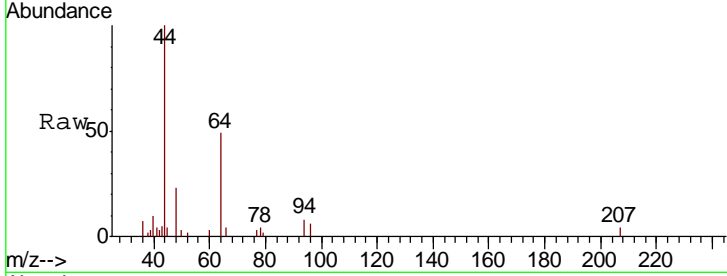




#5
 Bromomethane
 Concen: Below Cal
 RT: 1.64 min Scan# 171
 Delta R.T. 0.04 min
 Lab File: VU034095.D
 Acq: 30 Aug 2019 13:58

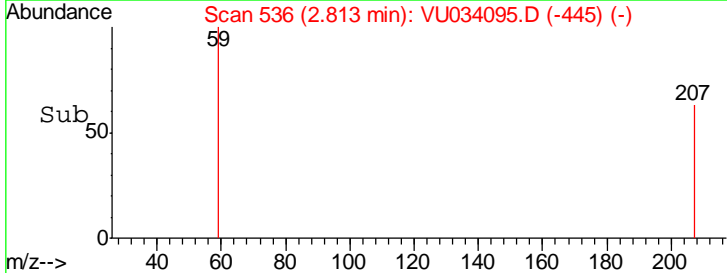
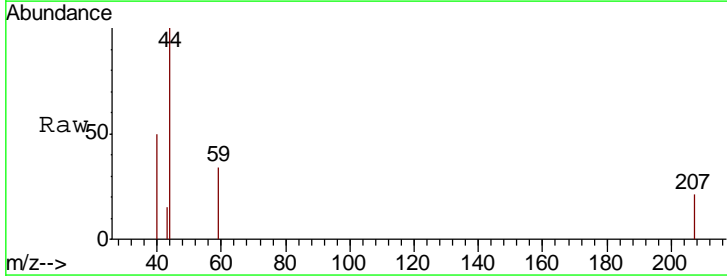
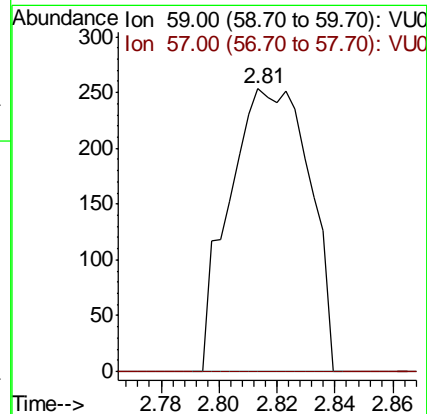
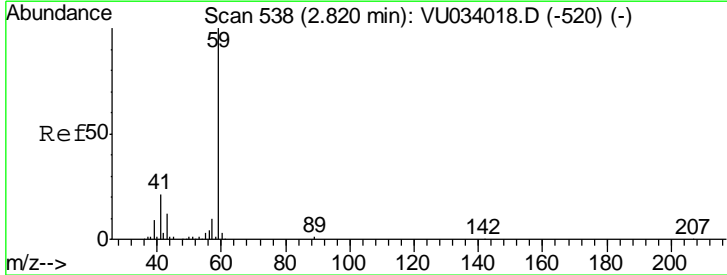
Instrument :
 MSVOA_U
 ClientSampled :
 TW-6

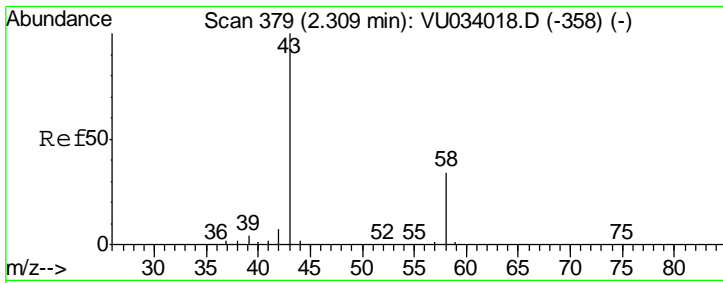
Tgt Ion: 94 Resp: 762
 Ion Ratio Lower Upper
 94 100
 96 75.8 76.3 114.5#



#11
 Tert butyl alcohol
 Concen: 0.363 ug/l
 RT: 2.81 min Scan# 536
 Delta R.T. -0.01 min
 Lab File: VU034095.D
 Acq: 30 Aug 2019 13:58

Tgt Ion: 59 Resp: 485
 Ion Ratio Lower Upper
 59 100
 57 0.0 8.0 12.0#



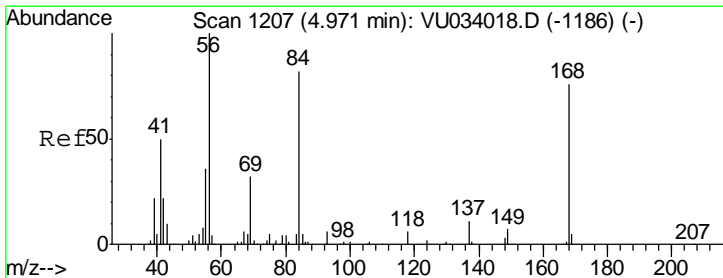
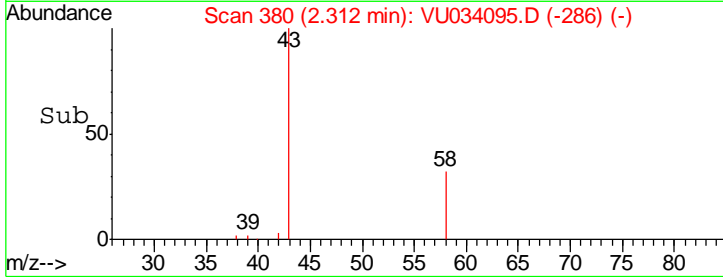
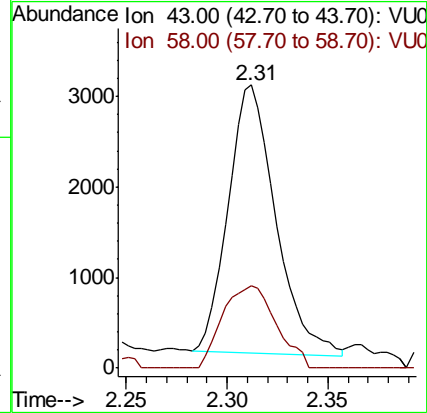
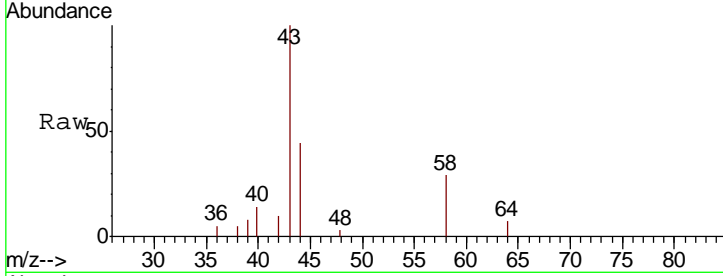


#16
 Acetone
 Concen: 1.640 ug/l
 RT: 2.31 min Scan# 380
 Delta R.T. 0.00 min
 Lab File: VU034095.D
 Acq: 30 Aug 2019 13:58

Instrument :
 MSVOA_U
 ClientSampled :
 TW-6

Tgt Ion: 43 Resp: 4848

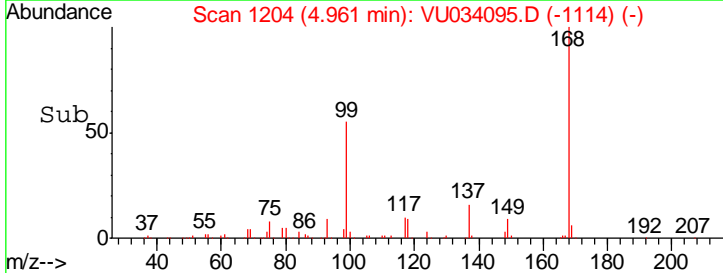
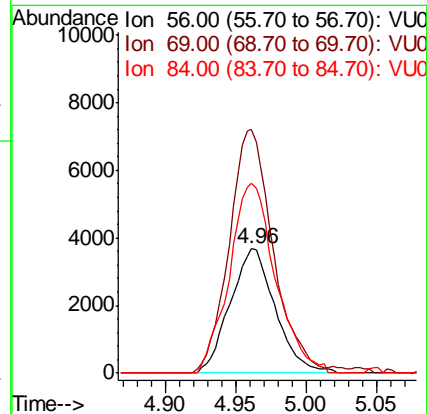
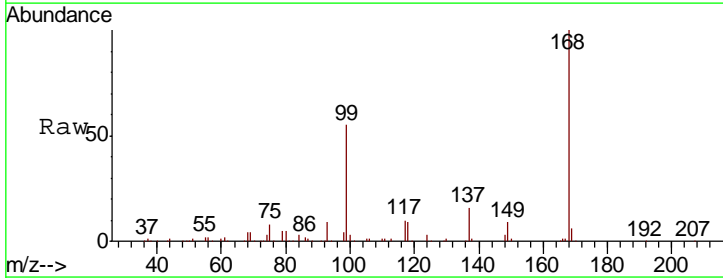
Ion	Ratio	Lower	Upper
43	100		
58	31.1	26.8	40.2

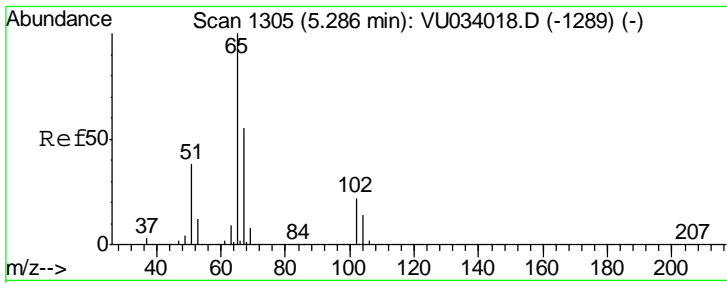


#31
 Cyclohexane
 Concen: 0.951 ug/l
 RT: 4.96 min Scan# 1204
 Delta R.T. -0.01 min
 Lab File: VU034095.D
 Acq: 30 Aug 2019 13:58

Tgt Ion: 56 Resp: 8229

Ion	Ratio	Lower	Upper
56	100		
69	195.5	25.4	38.0#
84	152.6	65.8	98.8#

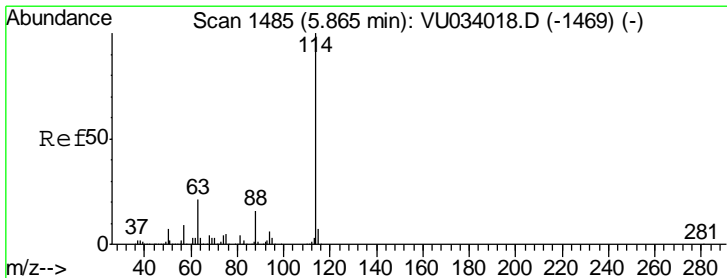
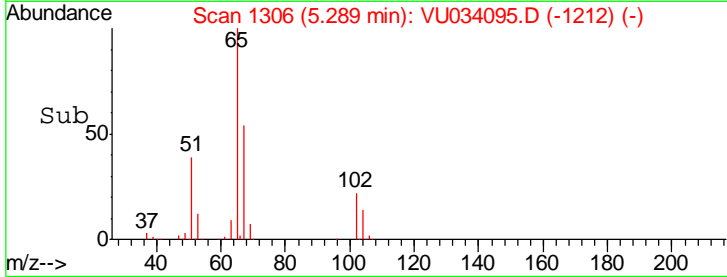
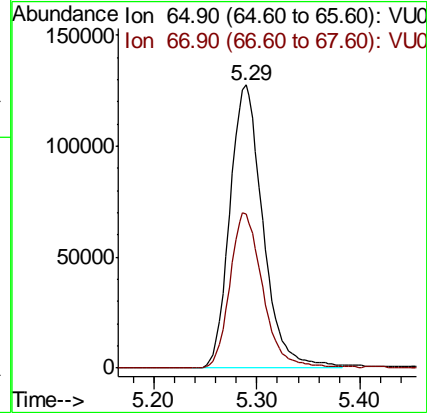
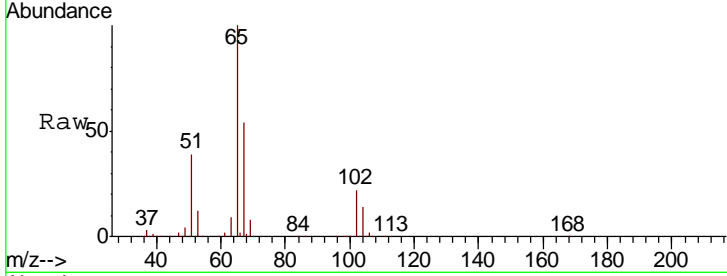




#33
 1,2-Dichloroethane-d4
 Concen: 49.393 ug/l
 RT: 5.29 min Scan# 1306
 Delta R.T. 0.00 min
 Lab File: VU034095.D
 Acq: 30 Aug 2019 13:58

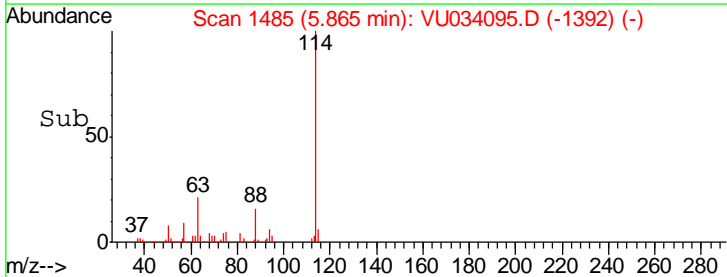
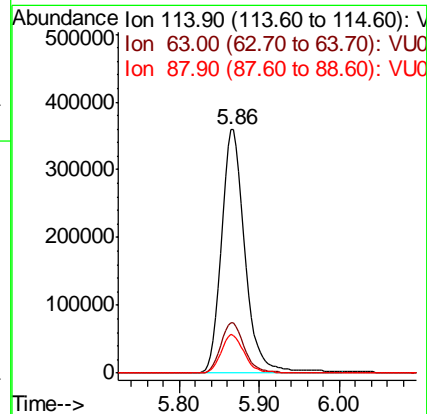
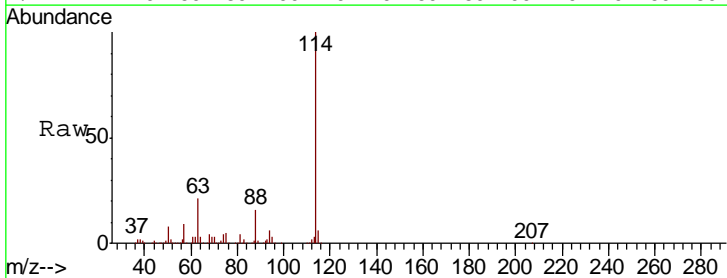
Instrument :
 MSVOA_U
 ClientSampled :
 TW-6

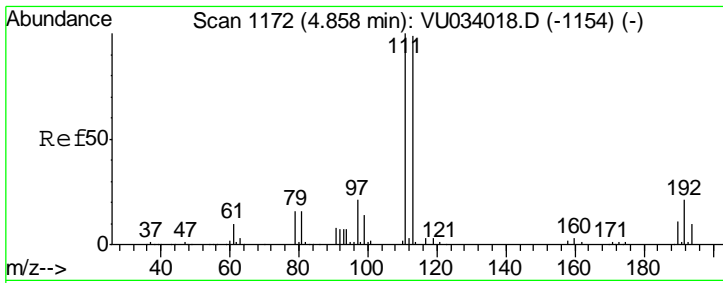
Tgt Ion	Resp	Lower	Upper
65	100		
67	54.6	0.0	110.6



#34
 1,4-Difluorobenzene
 Concen: 50.000 ug/l
 RT: 5.86 min Scan# 1485
 Delta R.T. 0.00 min
 Lab File: VU034095.D
 Acq: 30 Aug 2019 13:58

Tgt Ion	Resp	Lower	Upper
114	100		
63	20.6	0.0	42.0
88	15.8	0.0	32.0

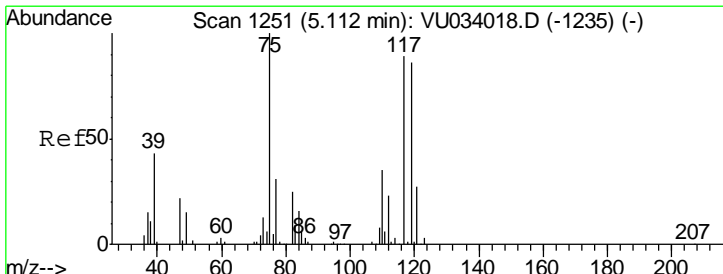
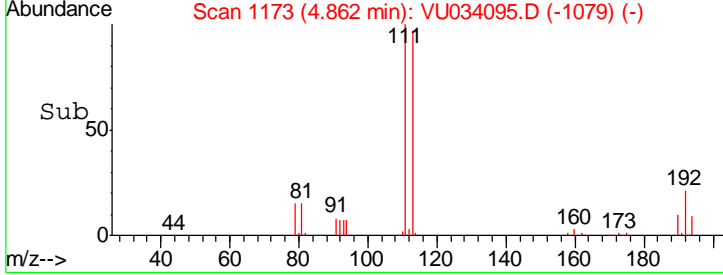
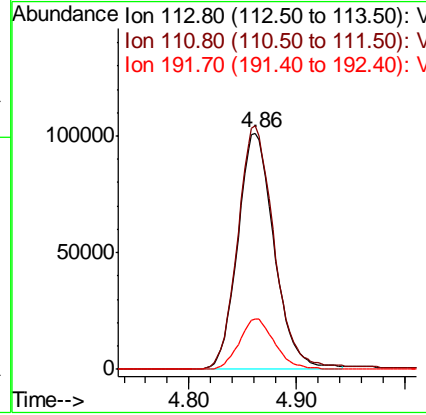
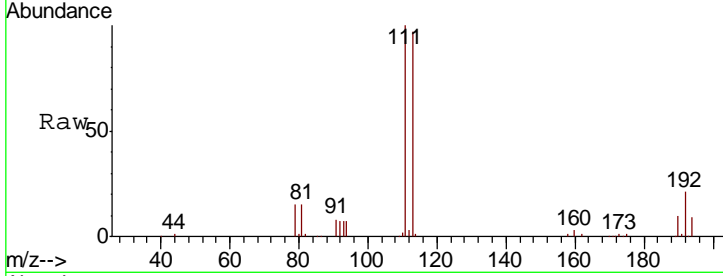




#35
 Dibromofluoromethane
 Concen: 46.742 ug/l
 RT: 4.86 min Scan# 1173
 Delta R.T. 0.00 min
 Lab File: VU034095.D
 Acq: 30 Aug 2019 13:58

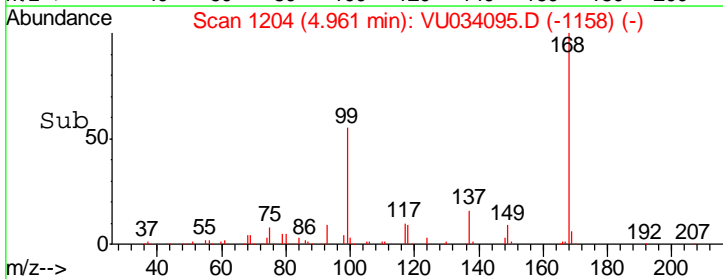
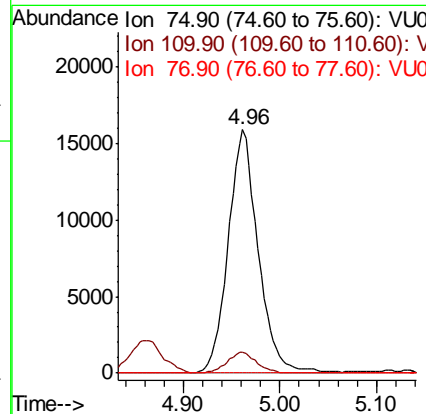
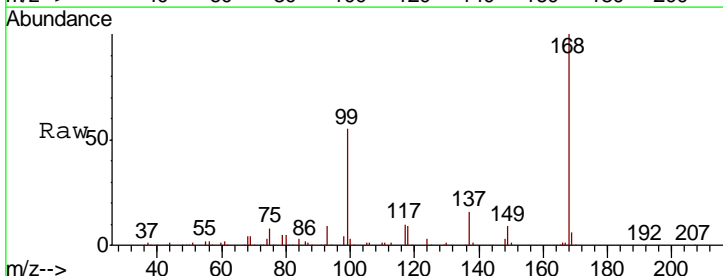
Instrument : MSVOA_U
 ClientSampled : TW-6

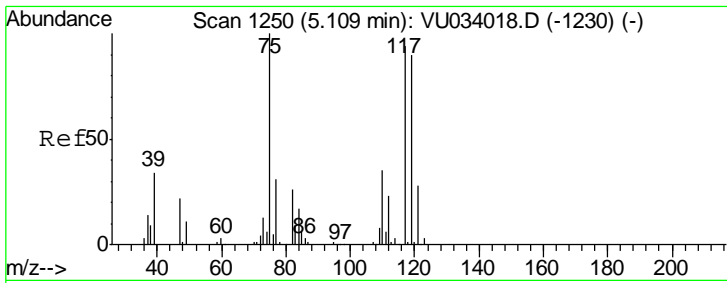
Tgt Ion	Resp	Lower	Upper
113	100		
111	102.4	81.7	122.5
192	20.9	17.1	25.7



#36
 1,1-Dichloropropene
 Concen: 4.926 ug/l
 RT: 4.96 min Scan# 1204
 Delta R.T. -0.15 min
 Lab File: VU034095.D
 Acq: 30 Aug 2019 13:58

Tgt Ion	Resp	Lower	Upper
75	100		
110	8.3	17.8	53.5#
77	0.0	25.0	37.4#

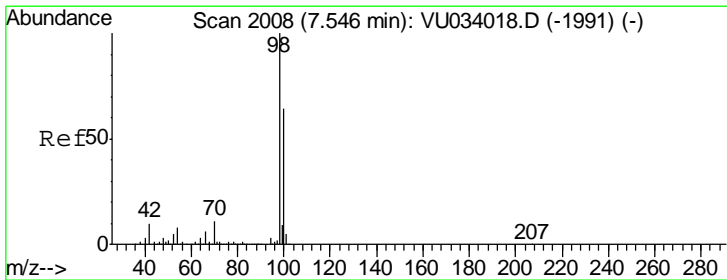
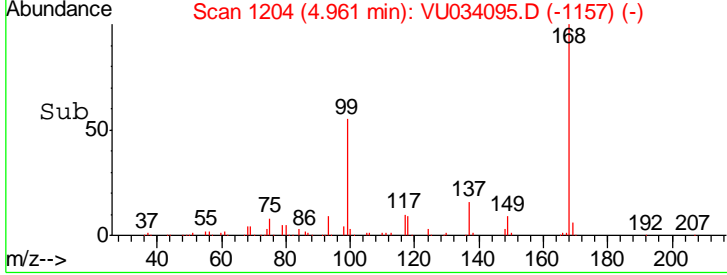
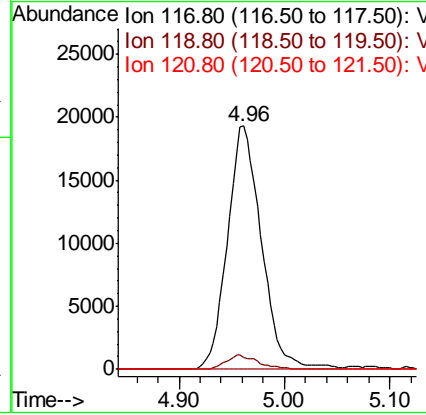
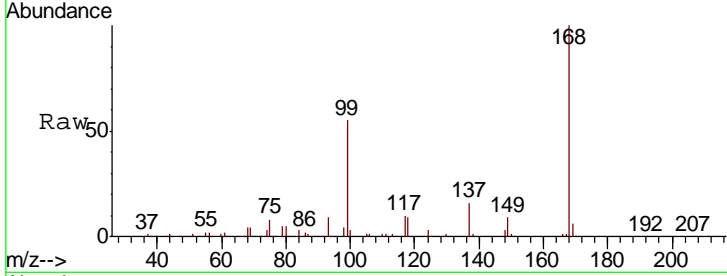




#38
 Carbon Tetrachloride
 Concen: 6.414 ug/l
 RT: 4.96 min Scan# 1204
 Delta R.T. -0.15 min
 Lab File: VU034095.D
 Acq: 30 Aug 2019 13:58

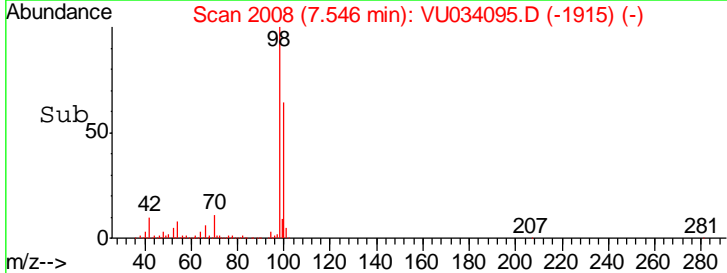
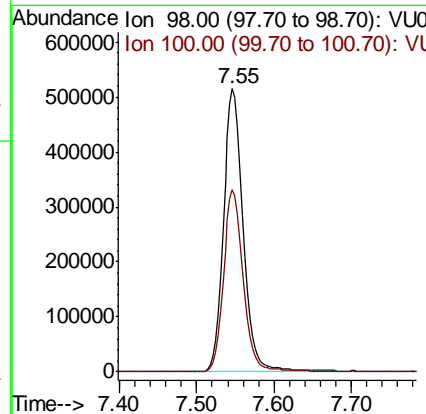
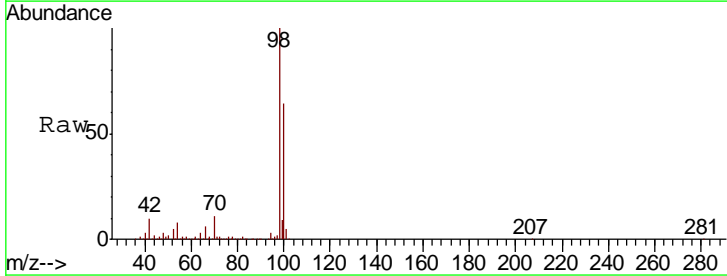
Instrument :
 MSVOA_U
 ClientSampled :
 TW-6

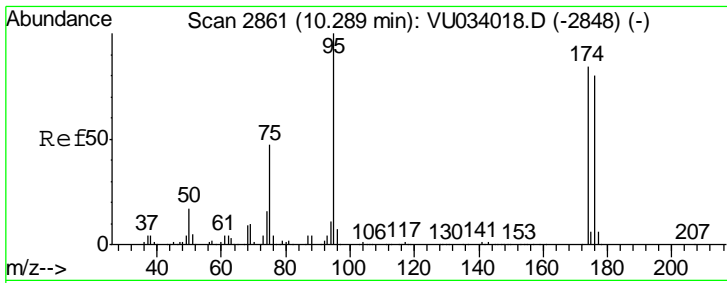
Tgt Ion	Resp	Lower	Upper
117	43059		
117	100		
119	5.1	77.0	115.4#
121	0.0	23.9	35.9#



#50
 Toluene-d8
 Concen: 48.344 ug/l
 RT: 7.55 min Scan# 2008
 Delta R.T. 0.00 min
 Lab File: VU034095.D
 Acq: 30 Aug 2019 13:58

Tgt Ion	Resp	Lower	Upper
98	923099		
98	100		
100	64.1	50.3	75.5

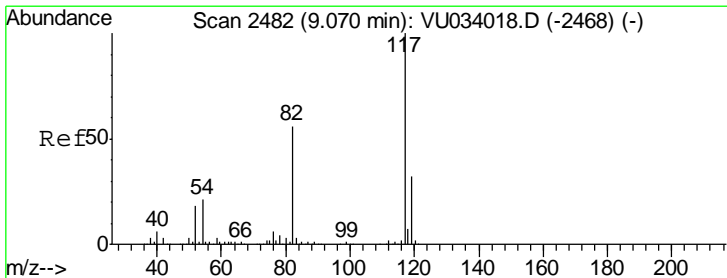
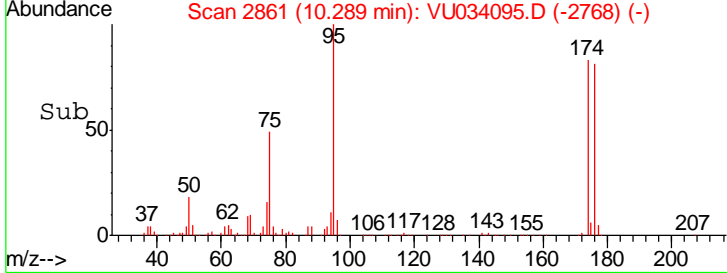
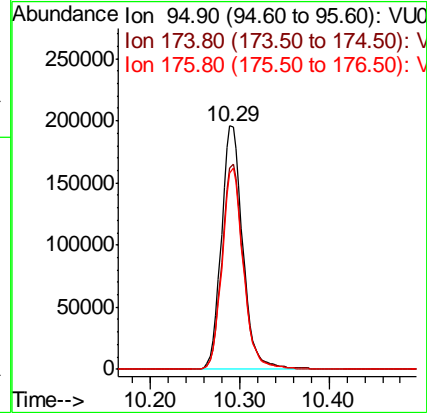
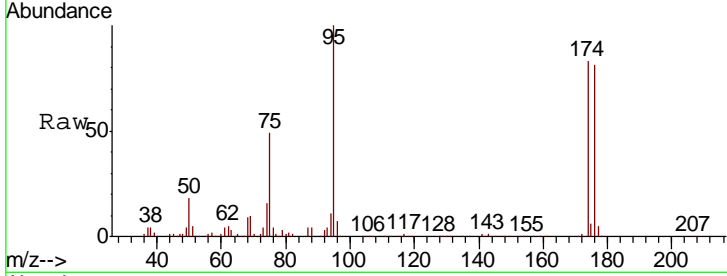




#62
 4-Bromofluorobenzene
 Concen: 44.050 ug/l
 RT: 10.29 min Scan# 2861
 Delta R.T. 0.00 min
 Lab File: VU034095.D
 Acq: 30 Aug 2019 13:58

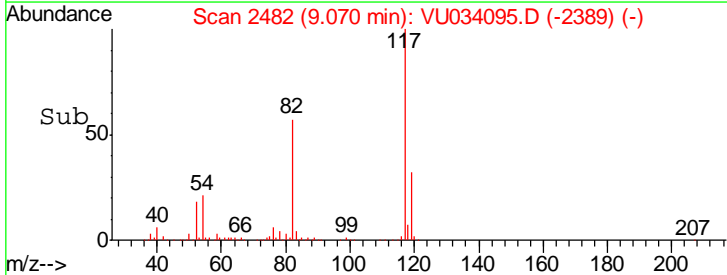
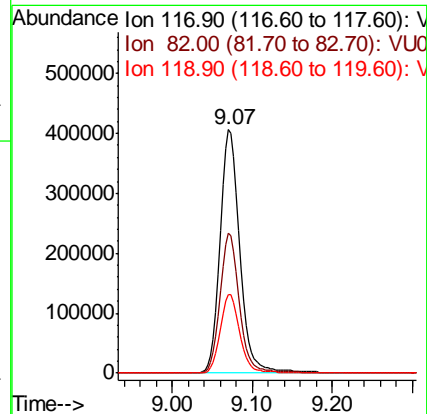
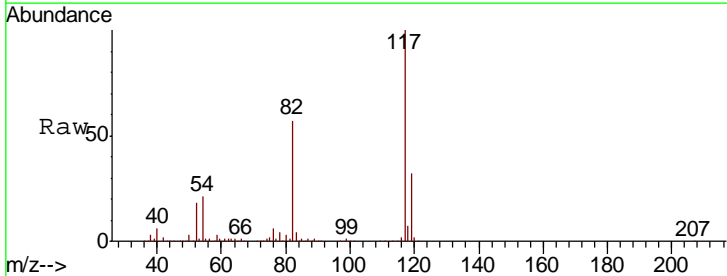
Instrument :
 MSVOA_U
 ClientSampled :
 TW-6

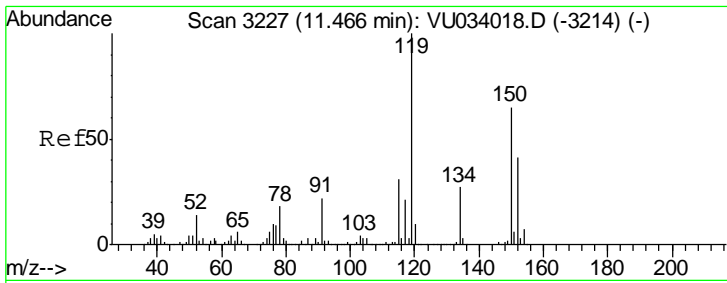
Tgt Ion	Resp	Lower	Upper
95	327185		
174	84.5	0.0	168.8
176	81.2	0.0	161.8



#63
 Chlorobenzene-d5
 Concen: 50.000 ug/l
 RT: 9.07 min Scan# 2482
 Delta R.T. 0.00 min
 Lab File: VU034095.D
 Acq: 30 Aug 2019 13:58

Tgt Ion	Resp	Lower	Upper
117	702073		
82	57.3	45.1	67.7
119	32.2	25.4	38.0

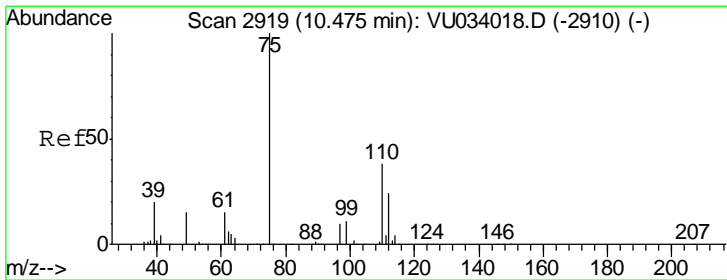
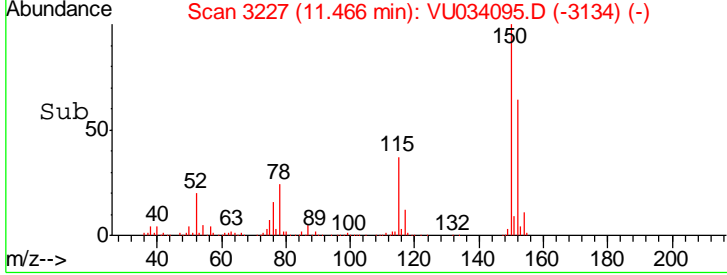
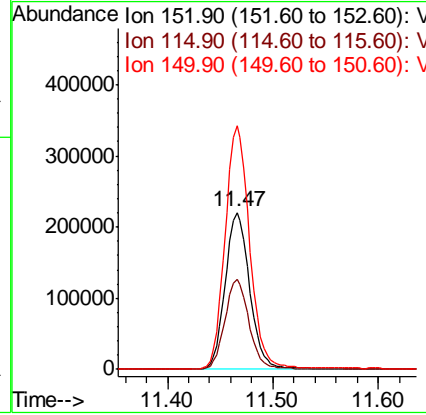
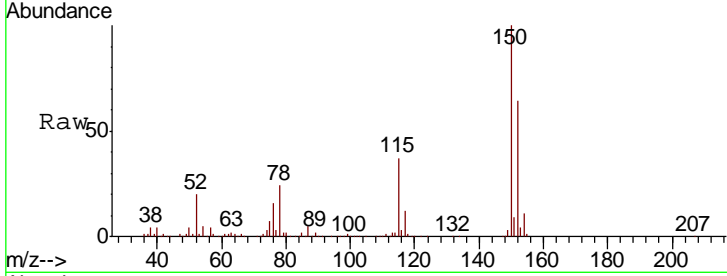




#72
 1,4-Dichlorobenzene-d4
 Concen: 50.000 ug/l
 RT: 11.47 min Scan# 3227
 Delta R.T. 0.00 min
 Lab File: VU034095.D
 Acq: 30 Aug 2019 13:58

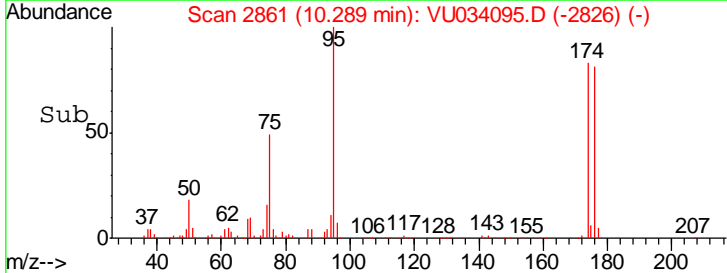
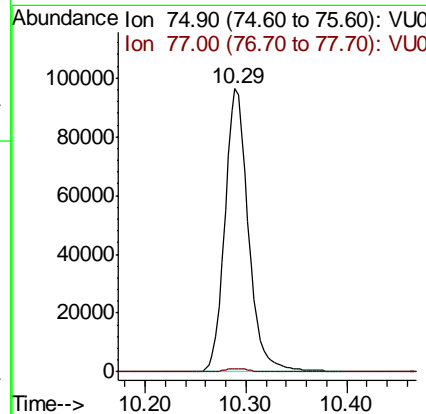
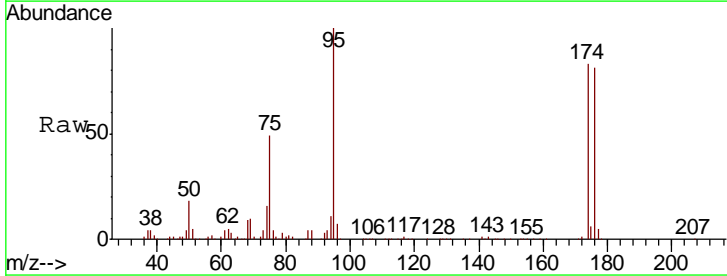
Instrument :
 MSVOA_U
 ClientSampled :
 TW-6

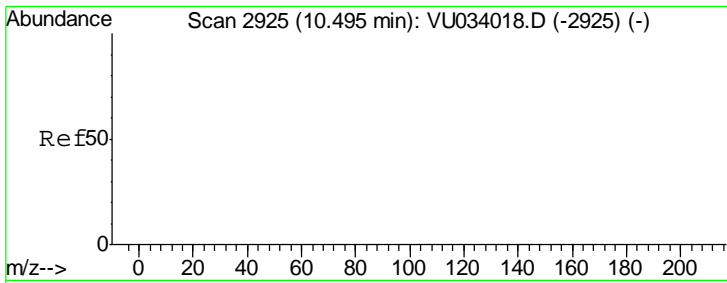
Tgt Ion:152 Resp: 356970
 Ion Ratio Lower Upper
 152 100
 115 56.6 41.1 123.3
 150 154.8 0.0 348.8



#76
 1,2,3-Trichloropropane
 Concen: 19.595 ug/l
 RT: 10.29 min Scan# 2861
 Delta R.T. -0.19 min
 Lab File: VU034095.D
 Acq: 30 Aug 2019 13:58

Tgt Ion: 75 Resp: 157649
 Ion Ratio Lower Upper
 75 100
 77 1.3 20.1 60.2#

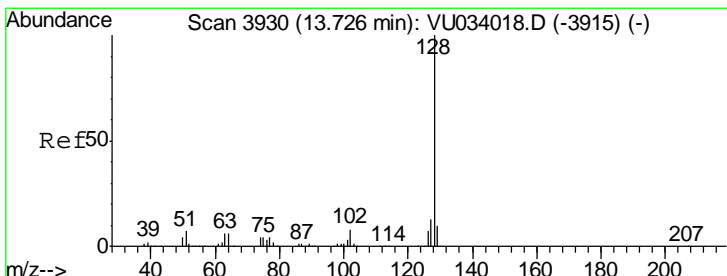
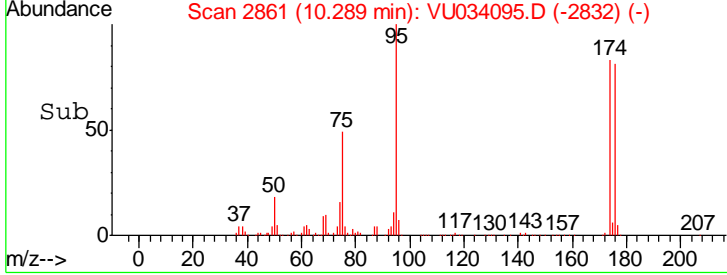
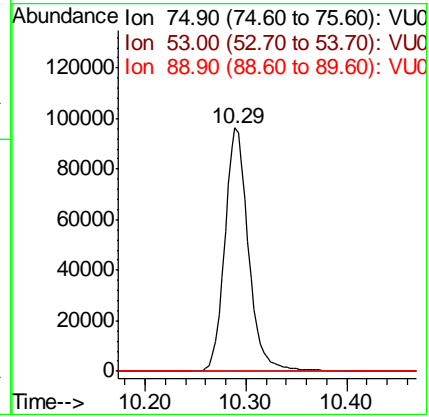
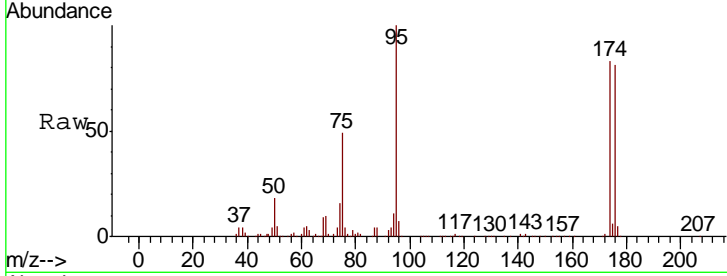




#81
 trans-1,4-Dichloro-2-butene
 Concen: 65.980 ug/l
 RT: 10.29 min Scan# 2861
 Delta R.T. -0.21 min
 Lab File: VU034095.D
 Acq: 30 Aug 2019 13:58

Instrument :
 MSVOA_U
 ClientSampled :
 TW-6

Tgt Ion	Resp	Lower	Upper
75	100		
53	0.1	0.0	0.0#
89	0.0	0.0	0.0



#95
 Naphthalene
 Concen: 1.825 ug/l
 RT: 13.79 min Scan# 3949
 Delta R.T. 0.06 min
 Lab File: VU034095.D
 Acq: 30 Aug 2019 13:58

Tgt Ion	Resp	Lower	Upper
128	100		
127	0.0	10.2	15.4#
129	0.0	8.4	12.6#

