

Data Path : Z:\voasrv\HPCHEM1\MSVOA_U\Data\VU091624\
 Data File : VU060799.D
 Acq On : 16 Sep 2024 23:04
 Operator : MD/SY
 Sample : P3967-16
 Misc : 25.0mL/MSVOA_U/WATER
 ALS Vial : 30 Sample Multiplier: 1

Instrument :
 MSVOA_U
 ClientSampleId :
 C0AP2

Quant Time: Sep 17 01:59:18 2024
 Quant Method : Z:\voasrv\HPCHEM1\MSVOA_U\Method\SFAMUTR091624WMA.M
 Quant Title : TRACE VOA SFAM1.0
 QLast Update : Tue Sep 17 01:47:23 2024
 Response via : Initial Calibration

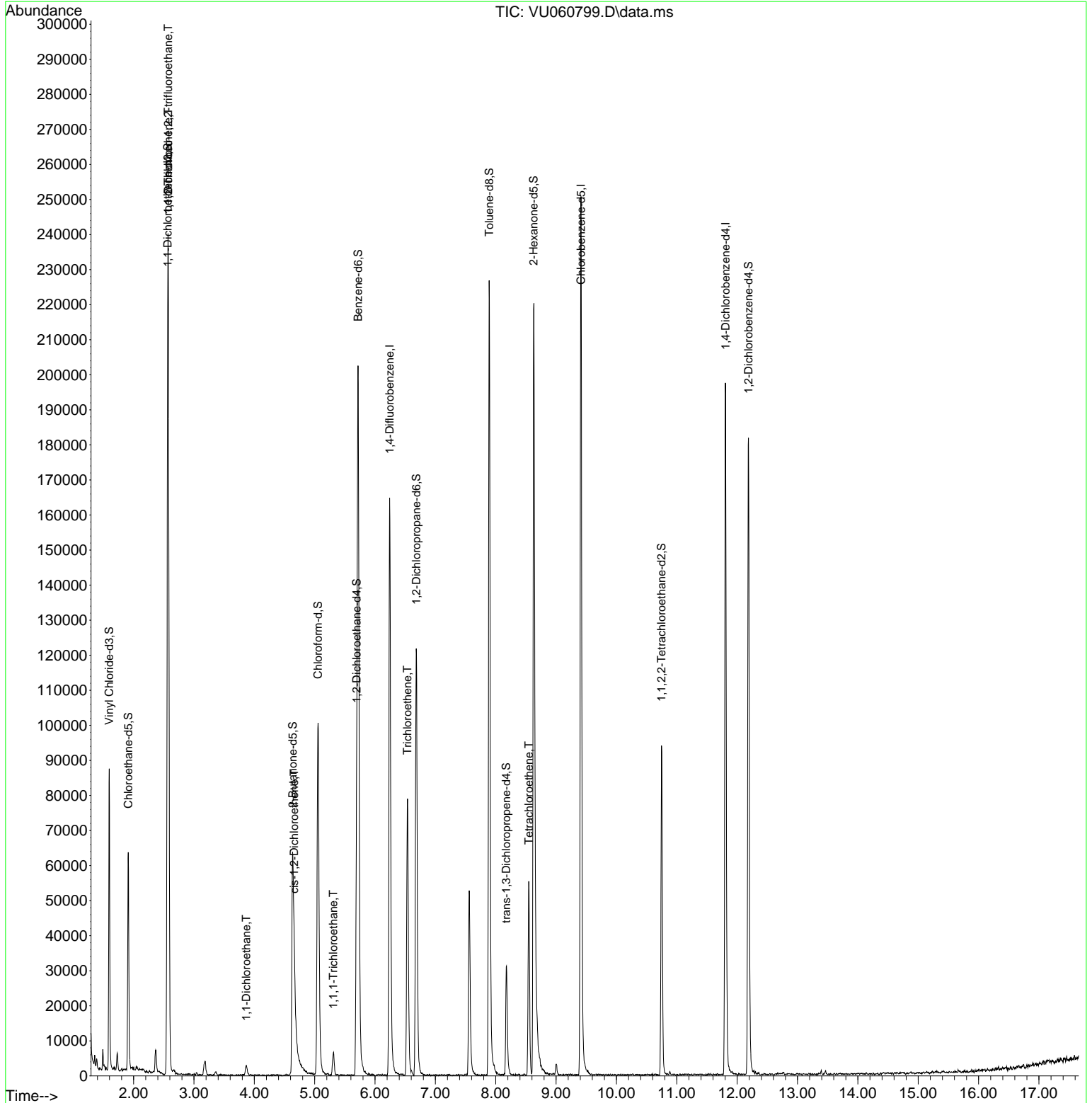
Compound	R.T.	QIon	Response	Conc	Units	Dev(Min)
Internal Standards						
1) 1,4-Difluorobenzene	6.242	114	145183	5.000	ug/L	0.00
28) Chlorobenzene-d5	9.412	117	155782	5.000	ug/L	0.00
58) 1,4-Dichlorobenzene-d4	11.808	152	60455	5.000	ug/L	0.00
System Monitoring Compounds						
4) Vinyl Chloride-d3	1.596	65	60624	4.643	ug/L	0.00
Spiked Amount	5.000	Range 40 - 130	Recovery	=	92.800%	
7) Chloroethane-d5	1.911	69	46286	4.978	ug/L	0.00
Spiked Amount	5.000	Range 65 - 130	Recovery	=	99.600%	
11) 1,1-Dichloroethene-d2	2.564	65	23625	5.104	ug/L	0.00
Spiked Amount	5.000	Range 60 - 125	Recovery	=	102.000%	
20) 2-Butanone-d5	4.634	46	109307	52.142	ug/L	0.00
Spiked Amount	50.000	Range 40 - 130	Recovery	=	104.280%	
24) Chloroform-d	5.056	84	101901	5.105	ug/L	0.00
Spiked Amount	5.000	Range 70 - 125	Recovery	=	102.000%	
26) 1,2-Dichloroethane-d4	5.695	65	50146	5.255	ug/L	0.00
Spiked Amount	5.000	Range 70 - 130	Recovery	=	105.200%	
32) Benzene-d6	5.718	84	197551	4.731	ug/L	0.00
Spiked Amount	5.000	Range 70 - 125	Recovery	=	94.600%	
36) 1,2-Dichloropropane-d6	6.682	67	65170	5.045	ug/L	0.00
Spiked Amount	5.000	Range 60 - 140	Recovery	=	100.800%	
41) Toluene-d8	7.891	98	163565	4.297	ug/L	0.00
Spiked Amount	5.000	Range 70 - 130	Recovery	=	86.000%	
43) trans-1,3-Dichloroprop...	8.174	79	21432	4.609	ug/L	0.00
Spiked Amount	5.000	Range 55 - 130	Recovery	=	92.200%	
46) 2-Hexanone-d5	8.628	63	84256	45.932	ug/L	0.00
Spiked Amount	50.000	Range 45 - 130	Recovery	=	91.860%	
56) 1,1,2,2-Tetrachloroeth...	10.747	84	49130	4.854	ug/L	0.00
Spiked Amount	5.000	Range 65 - 120	Recovery	=	97.000%	
66) 1,2-Dichlorobenzene-d4	12.187	152	56217	5.534	ug/L	0.00
Spiked Amount	5.000	Range 80 - 120	Recovery	=	110.600%	
Target Compounds						
10) 1,1,2-Trichloro-1,2,2-...	2.573	101	33462	3.346	ug/L	98
12) 1,1-Dichloroethene	2.573	96	34353	3.762	ug/L #	82
19) 1,1-Dichloroethane	3.866	63	3725	0.196	ug/L #	87
22) cis-1,2-Dichloroethene	4.660	96	2539	0.242	ug/L	84
29) 1,1,1-Trichloroethane	5.310	97	5022	0.299	ug/L #	89
34) Trichloroethene	6.538	95	28363	2.526	ug/L	98
47) Tetrachloroethene	8.551	164	13194	1.479	ug/L	91

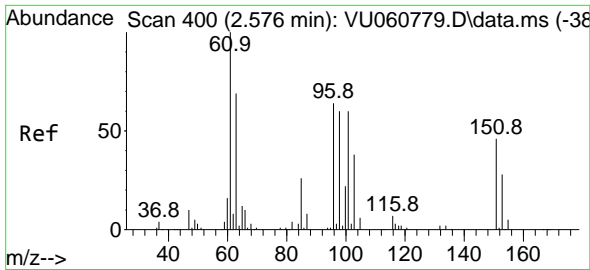
(#) = qualifier out of range (m) = manual integration (+) = signals summed

Data Path : Z:\voasrv\HPCHEM1\MSVOA_U\Data\VU091624\
 Data File : VU060799.D
 Acq On : 16 Sep 2024 23:04
 Operator : MD/SY
 Sample : P3967-16
 Misc : 25.0mL/MSVOA_U/WATER
 ALS Vial : 30 Sample Multiplier: 1

Instrument :
 MSVOA_U
ClientSampleId :
 C0AP2

Quant Time: Sep 17 01:59:18 2024
 Quant Method : Z:\voasrv\HPCHEM1\MSVOA_U\Method\SFAMUTR091624WMA.M
 Quant Title : TRACE VOA SFAM1.0
 QLast Update : Tue Sep 17 01:47:23 2024
 Response via : Initial Calibration

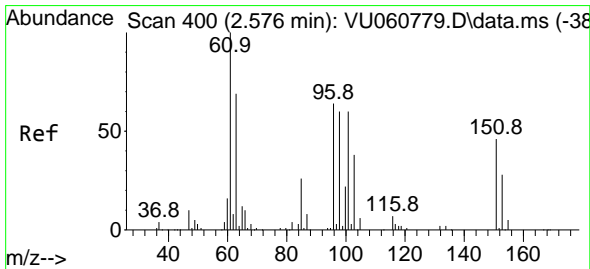
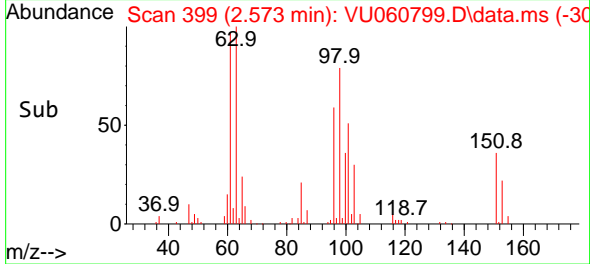
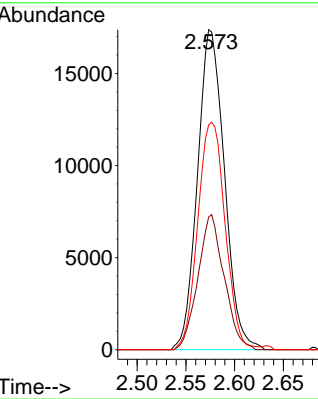
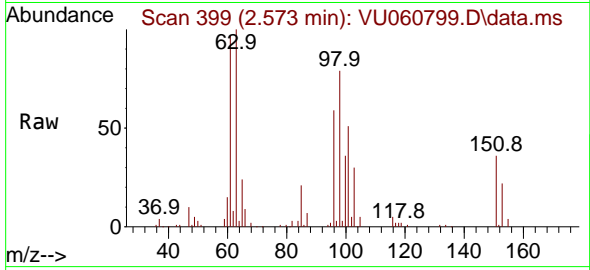




#10
 1,1,2-Trichloro-1,2,2-trifluoroethane
 Concen: 3.346 ug/L
 RT: 2.573 min Scan# 399
 Delta R.T. -0.003 min
 Lab File: VU060799.D
 Acq: 16 Sep 2024 23:04

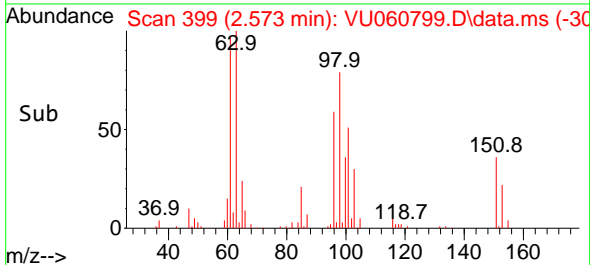
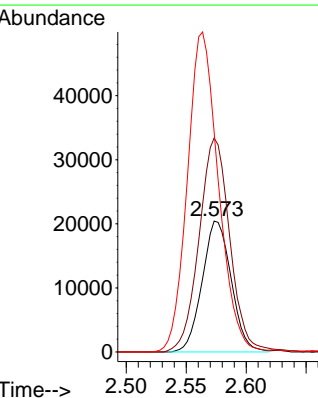
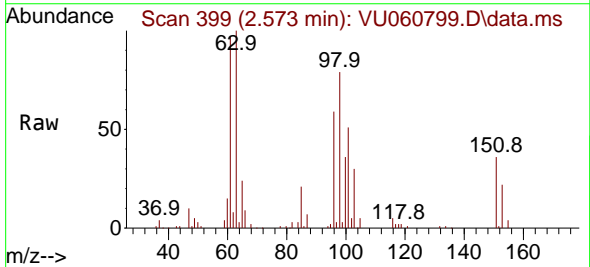
Instrument :
 MSVOA_U
 ClientSampleId :
 C0AP2

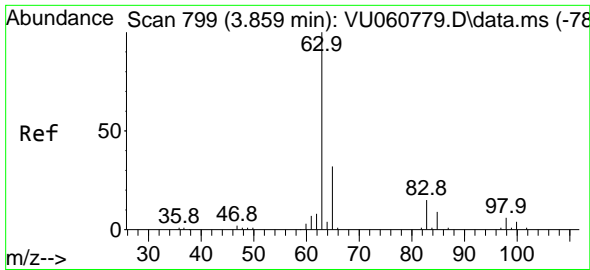
Tgt Ion	Resp	Lower	Upper
101	33462		
101	100		
85	41.0	34.2	51.4
151	72.1	58.6	88.0



#12
 1,1-Dichloroethene
 Concen: 3.762 ug/L
 RT: 2.573 min Scan# 399
 Delta R.T. -0.003 min
 Lab File: VU060799.D
 Acq: 16 Sep 2024 23:04

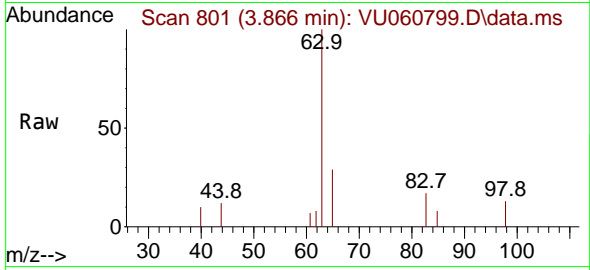
Tgt Ion	Resp	Lower	Upper
96	34353		
96	100		
61	163.5	120.7	224.1
63	168.2	90.0	167.2





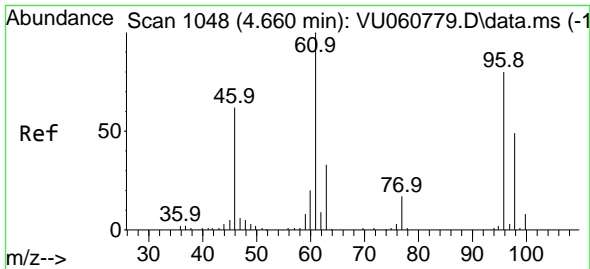
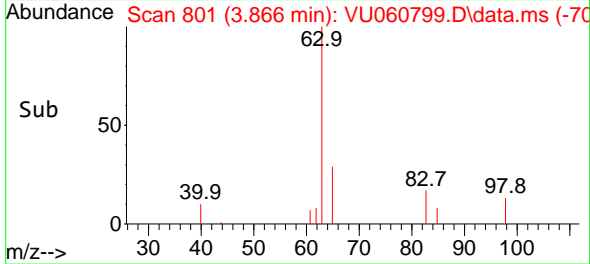
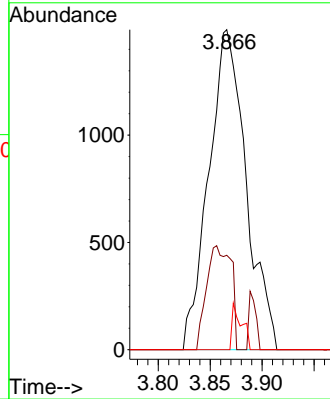
#19
 1,1-Dichloroethane
 Concen: 0.196 ug/L
 RT: 3.866 min Scan# 801
 Delta R.T. 0.007 min
 Lab File: VU060799.D
 Acq: 16 Sep 2024 23:04

Instrument : MSVOA_U
 ClientSampleId : COAP2



Tgt Ion: 63 Resp: 3725

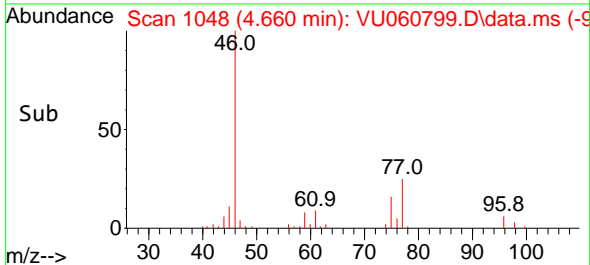
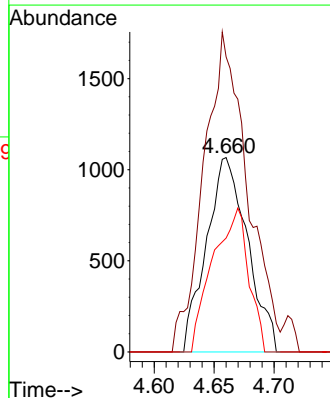
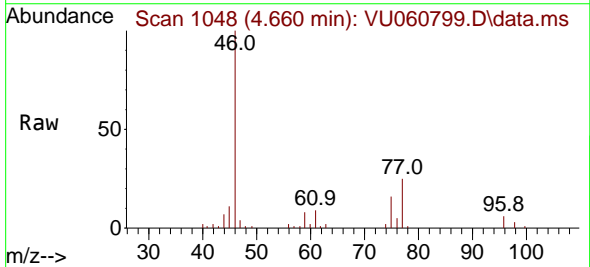
Ion	Ratio	Lower	Upper
63	100		
65	29.5	23.0	42.8
83	0.0	9.0	16.6

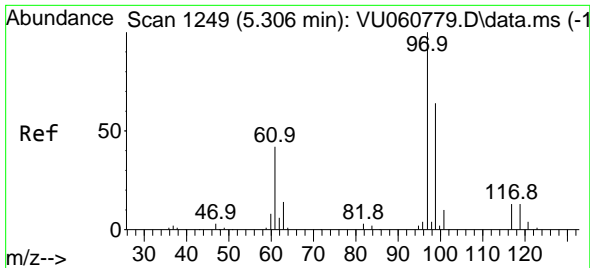


#22
 cis-1,2-Dichloroethene
 Concen: 0.242 ug/L
 RT: 4.660 min Scan# 1048
 Delta R.T. 0.000 min
 Lab File: VU060799.D
 Acq: 16 Sep 2024 23:04

Tgt Ion: 96 Resp: 2539

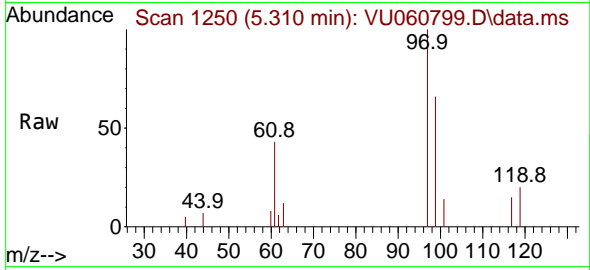
Ion	Ratio	Lower	Upper
96	100		
61	151.7	89.7	166.5
98	58.6	45.1	83.9



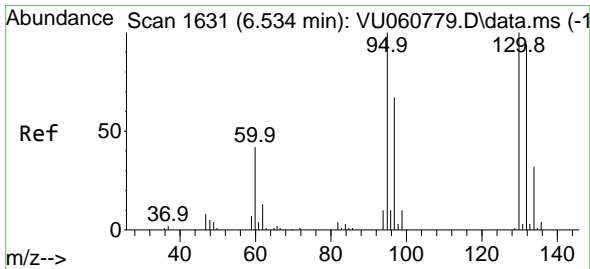
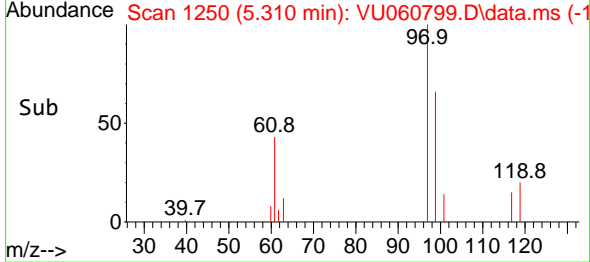
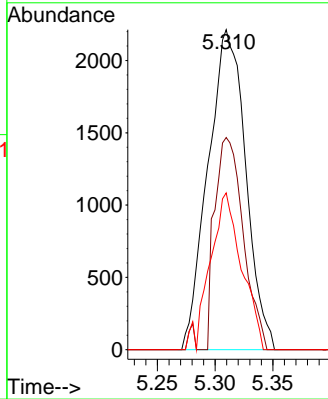


#29
 1,1,1-Trichloroethane
 Concen: 0.299 ug/L
 RT: 5.310 min Scan# 11
 Delta R.T. 0.004 min
 Lab File: VU060799.D
 Acq: 16 Sep 2024 23:04

Instrument :
 MSVOA_U
 ClientSampleId :
 C0AP2

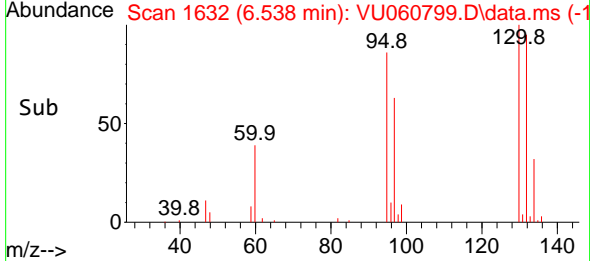
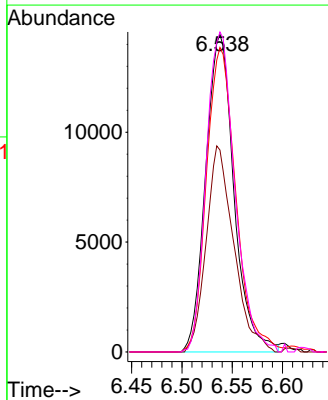
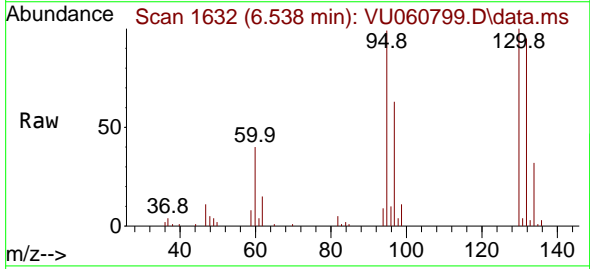


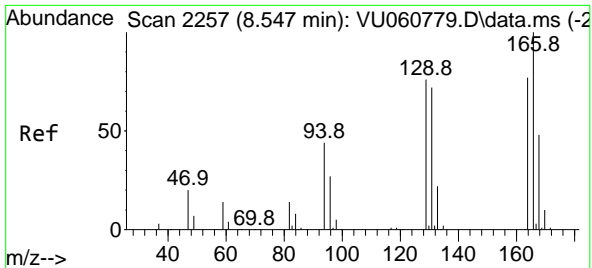
Tgt Ion: 97 Resp: 5022
 Ion Ratio Lower Upper
 97 100
 99 50.3 50.5 75.7#
 61 41.1 34.4 51.6



#34
 Trichloroethene
 Concen: 2.526 ug/L
 RT: 6.538 min Scan# 1632
 Delta R.T. 0.004 min
 Lab File: VU060799.D
 Acq: 16 Sep 2024 23:04

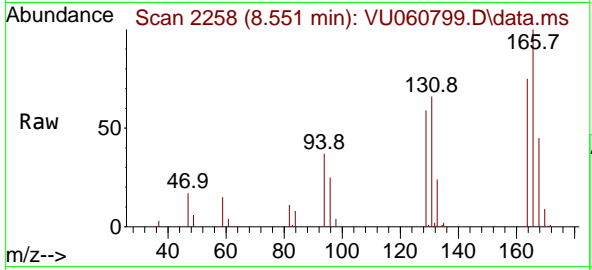
Tgt Ion: 95 Resp: 28363
 Ion Ratio Lower Upper
 95 100
 97 63.6 44.9 83.5
 132 95.9 63.5 117.9
 130 100.8 70.2 130.4





#47
 Tetrachloroethene
 Concen: 1.479 ug/L
 RT: 8.551 min Scan# 21
 Delta R.T. 0.004 min
 Lab File: VU060799.D
 Acq: 16 Sep 2024 23:04

Instrument :
 MSVOA_U
 ClientSampleId :
 C0AP2



Tgt Ion:164 Resp: 13194

Ion	Ratio	Lower	Upper
164	100		
129	79.6	67.3	124.9
131	88.8	65.4	121.4
166	133.9	89.5	166.1

