

Data Path : Z:\voasrv\HPCHEM1\MSVOA\_U\Data\VU092024\  
 Data File : VU060950.D  
 Acq On : 20 Sep 2024 18:02  
 Operator : MD/SY  
 Sample : P3987-11DL 4X  
 Misc : 25.0mL/MSVOA\_U/WATER  
 ALS Vial : 16 Sample Multiplier: 1

**Instrument :**  
 MSVOA\_U  
**ClientSampleId :**

Quant Time: Sep 21 01:43:38 2024  
 Quant Method : Z:\voasrv\HPCHEM1\MSVOA\_U\Method\SFAMUTR091624WMA.M  
 Quant Title : TRACE VOA SFAM1.0  
 QLast Update : Sat Sep 21 01:39:49 2024  
 Response via : Initial Calibration

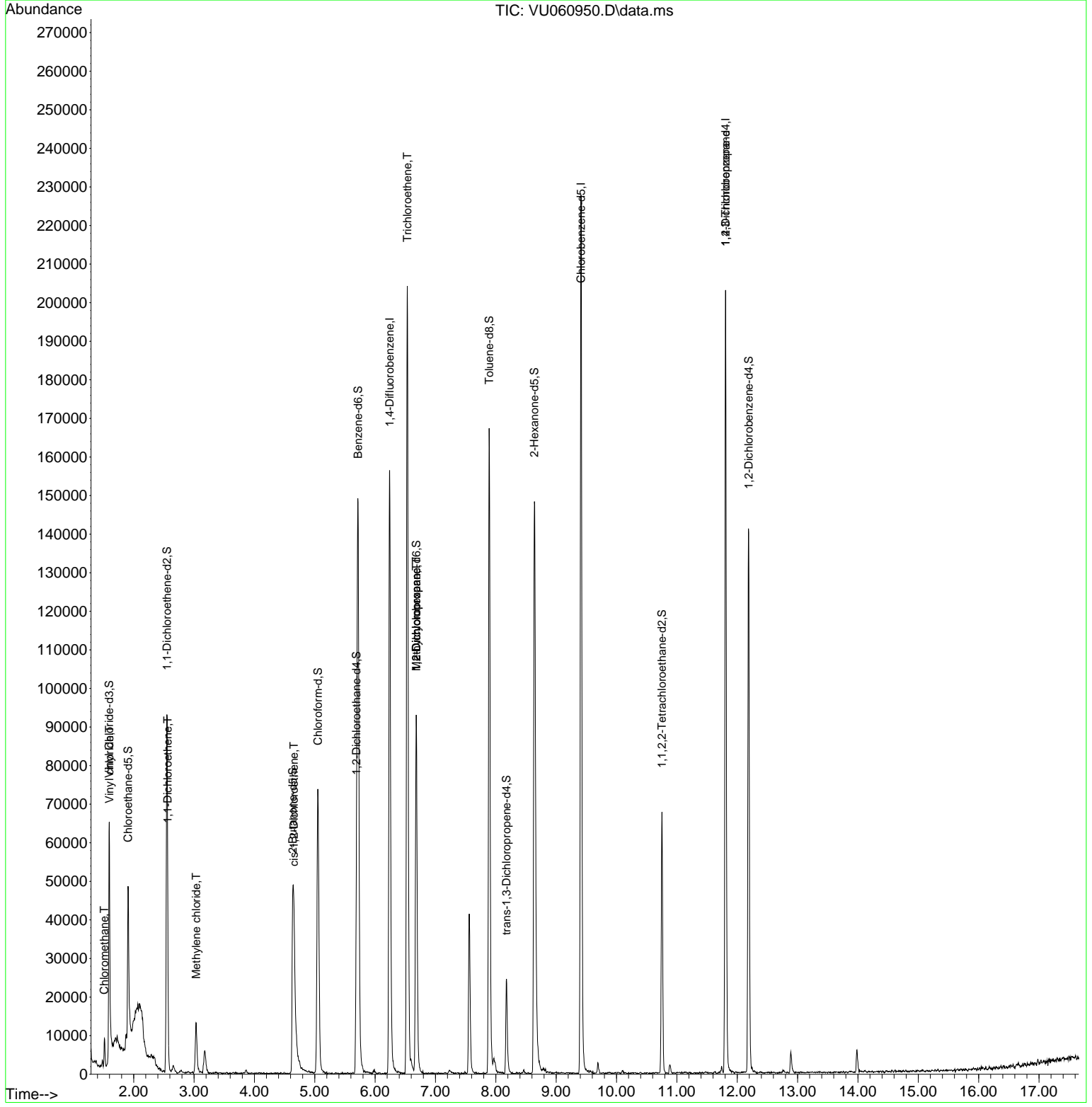
Compound	R.T.	QI on	Response	Conc	Units	Dev(Min)
<b>Internal Standards</b>						
1) 1,4-Difluorobenzene	6.242	114	129450	5.000	ug/L	0.00
28) Chlorobenzene-d5	9.412	117	136085	5.000	ug/L	0.00
58) 1,4-Dichlorobenzene-d4	11.807	152	56619	5.000	ug/L	0.00
<b>System Monitoring Compounds</b>						
4) Vinyl chloride-d3	1.596	65	47280	4.061	ug/L	0.00
Spike Amount	5.000	Range	40 - 130	Recovery	=	81.200%
7) Chloroethane-d5	1.907	69	37279	4.497	ug/L	0.00
Spike Amount	5.000	Range	65 - 130	Recovery	=	90.000%
11) 1,1-Dichloroethene-d2	2.551	65	17535	4.249	ug/L	0.00
Spike Amount	5.000	Range	60 - 125	Recovery	=	85.000%
20) 2-Butanone-d5	4.634	46	75706	40.503	ug/L	0.00
Spike Amount	50.000	Range	40 - 130	Recovery	=	81.000%
24) Chloroform-d	5.052	84	74617	4.192	ug/L	0.00
Spike Amount	5.000	Range	70 - 125	Recovery	=	83.800%
26) 1,2-Dichloroethane-d4	5.692	65	37234	4.376	ug/L	0.00
Spike Amount	5.000	Range	70 - 130	Recovery	=	87.600%
32) Benzene-d6	5.718	84	145346	3.985	ug/L	0.00
Spike Amount	5.000	Range	70 - 125	Recovery	=	79.600%
36) 1,2-Dichloropropane-d6	6.682	67	47659	4.223	ug/L	0.00
Spike Amount	5.000	Range	60 - 140	Recovery	=	84.400%
41) Toluene-d8	7.891	98	119708	3.600	ug/L	0.00
Spike Amount	5.000	Range	70 - 130	Recovery	=	72.000%
43) trans-1,3-Dichloropropene	8.177	79	15531	3.823	ug/L	0.00
Spike Amount	5.000	Range	55 - 130	Recovery	=	76.400%
46) 2-Hexanone-d5	8.640	63	62298	38.878	ug/L	0.01
Spike Amount	50.000	Range	45 - 130	Recovery	=	77.760%
56) 1,1,2,2-Tetrachloroethene	10.753	84	36403	4.117	ug/L	0.00
Spike Amount	5.000	Range	65 - 120	Recovery	=	82.400%
66) 1,2-Dichlorobenzene-d4	12.190	152	39042	4.104	ug/L	0.00
Spike Amount	5.000	Range	80 - 120	Recovery	=	82.000%
<b>Target Compounds</b>						
3) Chloromethane	1.515	50	4881	0.473	ug/L	96
5) Vinyl chloride	1.599	62	3921	0.351	ug/L #	1
12) 1,1-Dichloroethene	2.563	96	1712	0.210	ug/L #	1
16) Methylene chloride	3.036	84	6128	0.650	ug/L	92
22) cis-1,2-Dichloroethene	4.657	96	8305	0.889	ug/L	96
34) Trichloroethene	6.534	95	74498	7.595	ug/L	96
35) Methylcyclohexane	6.682	83	11179	0.831	ug/L #	18
37) 1,2-Dichloropropane	6.682	63	4758	0.461	ug/L #	93
61) 1,2,3-Trichloropropane	11.807	75	6540	1.238	ug/L #	65

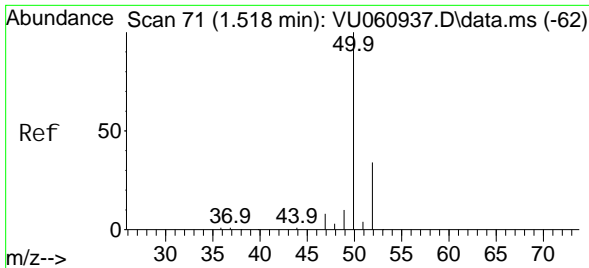
(#) = qualifier out of range (m) = manual integration (+) = signals summed

Data Path : Z:\voasrv\HPCHEM1\MSVOA\_U\Data\VU092024\  
 Data File : VU060950.D  
 Acq On : 20 Sep 2024 18:02  
 Operator : MD/SY  
 Sample : P3987-11DL 4X  
 Misc : 25.0mL/MSVOA\_U/WATER  
 ALS Vial : 16 Sample Multiplier: 1

Instrument :  
 MSVOA\_U  
 ClientSampleId :

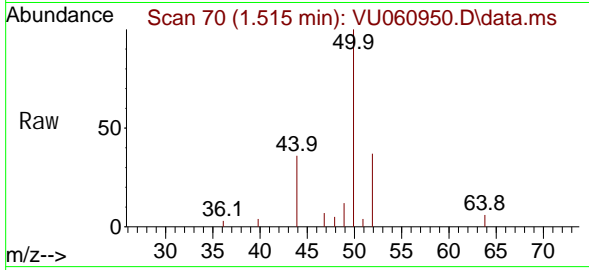
Quant Time: Sep 21 01:43:38 2024  
 Quant Method : Z:\voasrv\HPCHEM1\MSVOA\_U\Method\SFAMUTR091624WMA.M  
 Quant Title : TRACE VOA SFAM1.0  
 QLast Update : Sat Sep 21 01:39:49 2024  
 Response via : Initial Calibration



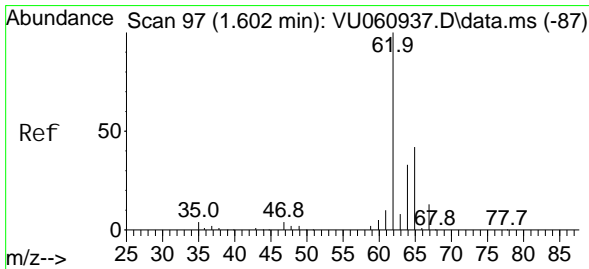
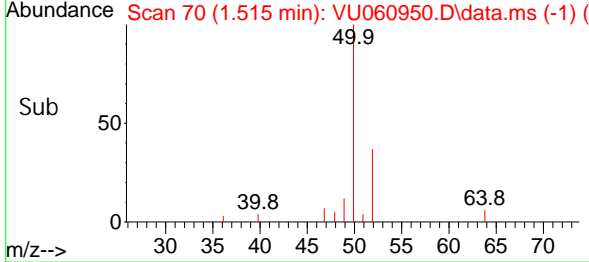
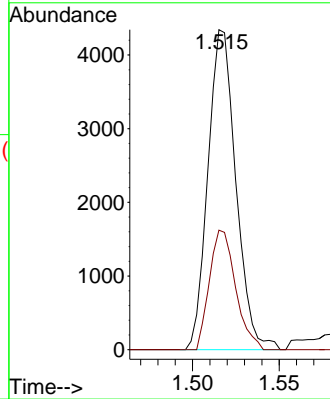


#3  
 Chloromethane  
 Concen: 0.473 ug/L  
 RT: 1.515 min Scan# 70  
 Delta R.T. -0.003 min  
 Lab File: VU060950.D  
 Acq: 20 Sep 2024 18:02

Instrument : MSVOA\_U  
 ClientSampleId :

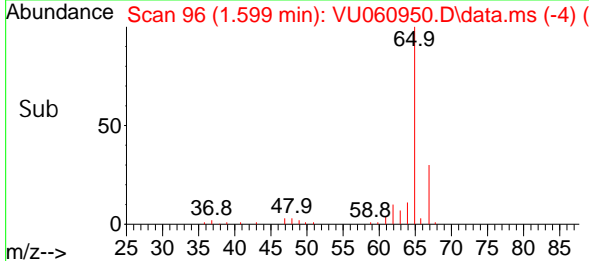
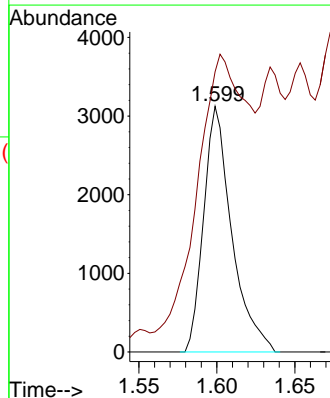
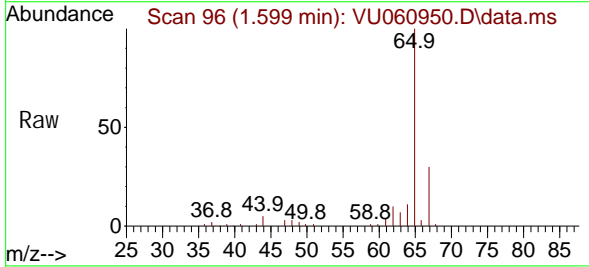


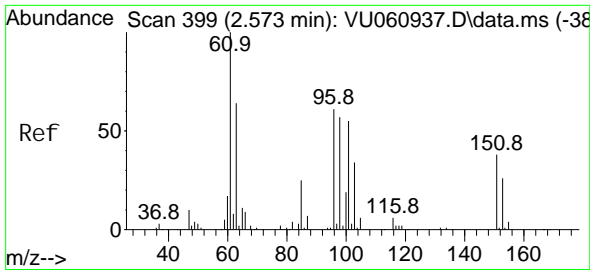
Tgt Ion: 50 Resp: 4881  
 Ion Ratio Lower Upper  
 50 100  
 52 37.4 24.4 45.4



#5  
 Vinyl chloride  
 Concen: 0.351 ug/L  
 RT: 1.599 min Scan# 96  
 Delta R.T. -0.003 min  
 Lab File: VU060950.D  
 Acq: 20 Sep 2024 18:02

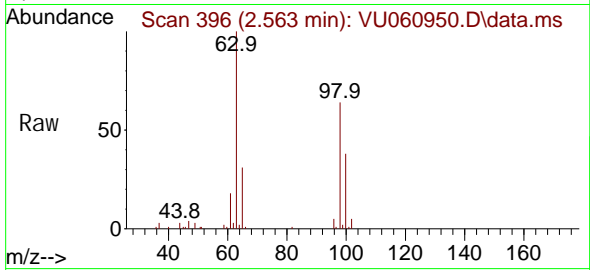
Tgt Ion: 62 Resp: 3921  
 Ion Ratio Lower Upper  
 62 100  
 64 114.1 24.0 44.6#



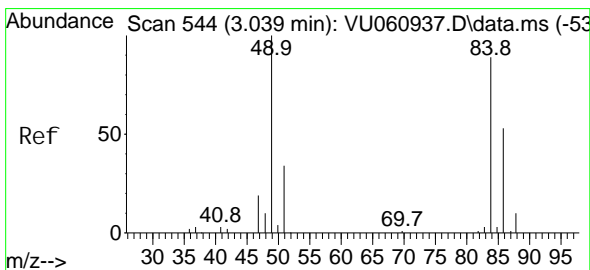
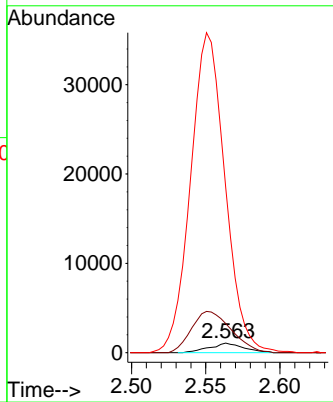
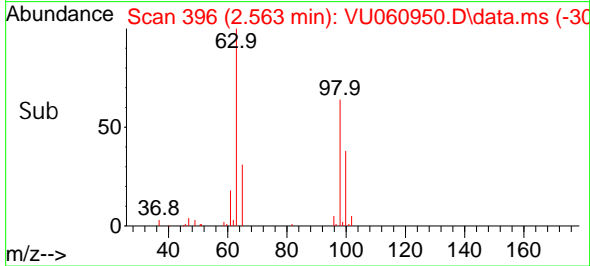


#12  
 1,1-Dichloroethene  
 Concen: 0.210 ug/L  
 RT: 2.563 min Scan# 396  
 Delta R.T. -0.010 min  
 Lab File: VU060950.D  
 Acq: 20 Sep 2024 18:02

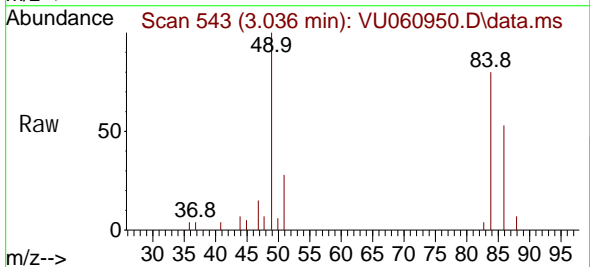
Instrument : MSVOA\_U  
 ClientSampleId :



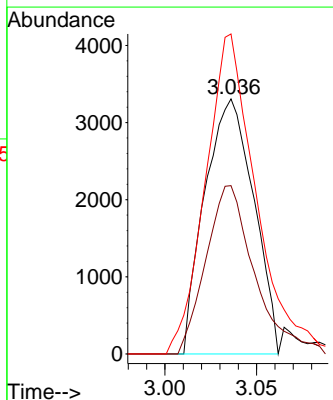
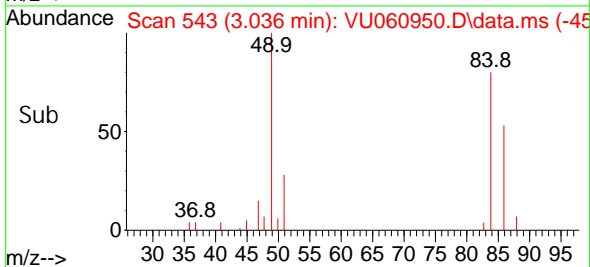
Tgt Ion: 96 Resp: 1712  
 Ion Ratio Lower Upper  
 96 100  
 61 306.1 120.7 224.1#  
 63 1731.1 90.0 167.2#

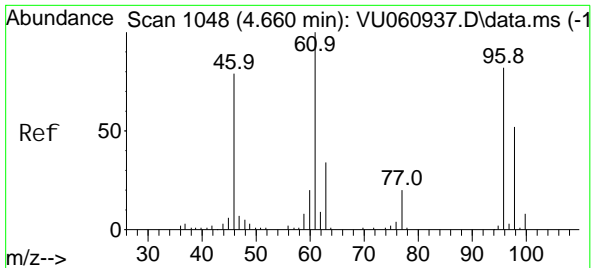


#16  
 Methylene chloride  
 Concen: 0.650 ug/L  
 RT: 3.036 min Scan# 543  
 Delta R.T. -0.003 min  
 Lab File: VU060950.D  
 Acq: 20 Sep 2024 18:02



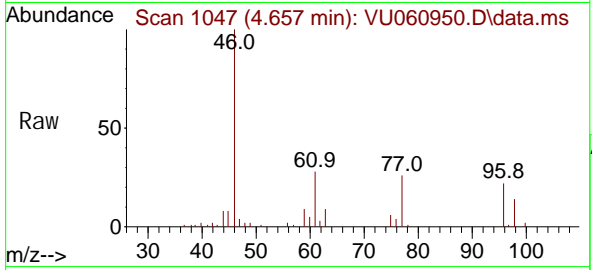
Tgt Ion: 84 Resp: 6128  
 Ion Ratio Lower Upper  
 84 100  
 86 66.0 47.3 87.8  
 49 125.5 78.7 146.1





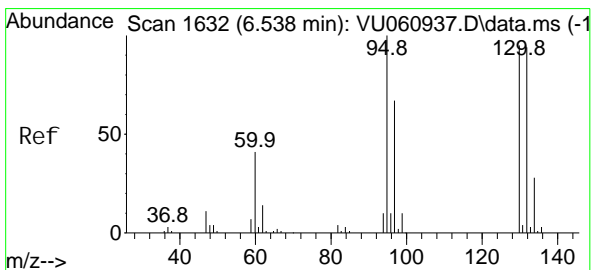
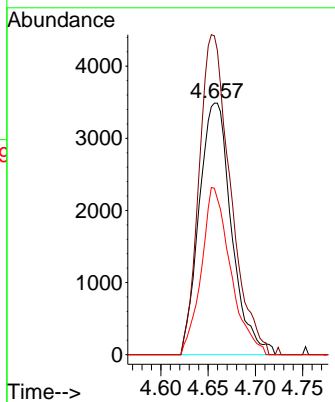
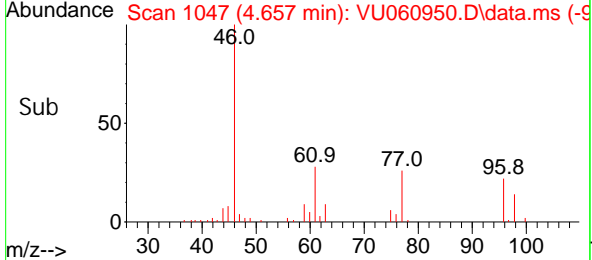
#22  
 cis-1,2-Dichloroethene  
 Concen: 0.889 ug/L  
 RT: 4.657 min Scan# 1047  
 Delta R.T. -0.003 min  
 Lab File: VU060950.D  
 Acq: 20 Sep 2024 18:02

Instrument : MSVOA\_U  
 ClientSampleId :

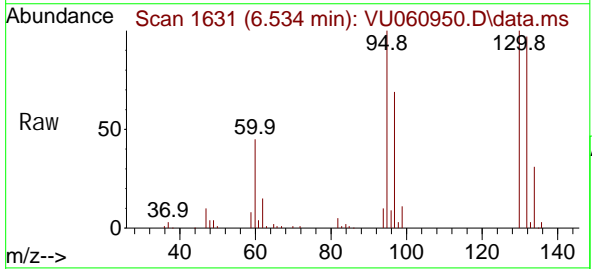


Tgt Ion: 96 Resp: 8305

Ion	Ratio	Lower	Upper
96	100		
61	121.7	89.7	166.5
98	63.5	45.1	83.9

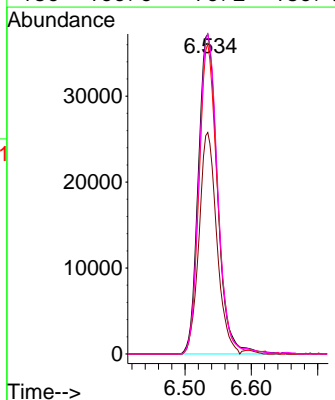
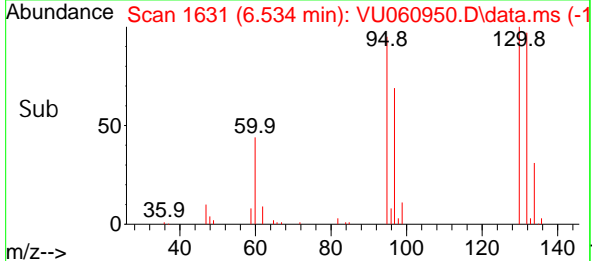


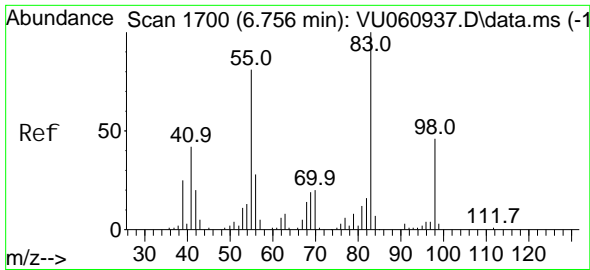
#34  
 Trichloroethene  
 Concen: 7.595 ug/L  
 RT: 6.534 min Scan# 1631  
 Delta R.T. -0.003 min  
 Lab File: VU060950.D  
 Acq: 20 Sep 2024 18:02



Tgt Ion: 95 Resp: 74498

Ion	Ratio	Lower	Upper
95	100		
97	69.2	44.9	83.5
132	96.9	63.5	117.9
130	100.0	70.2	130.4

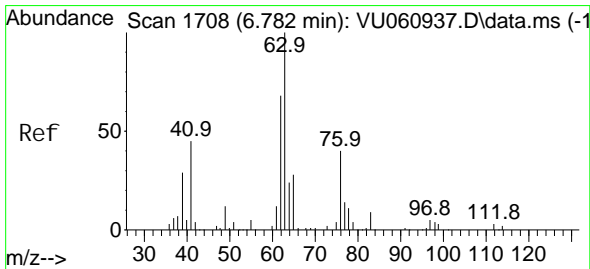
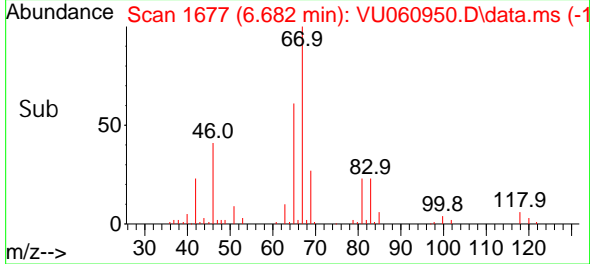
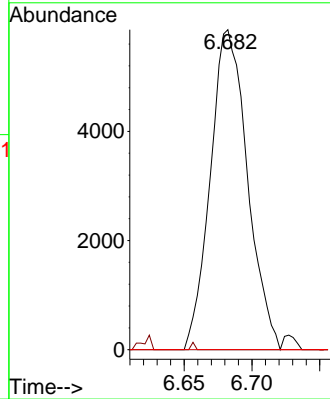
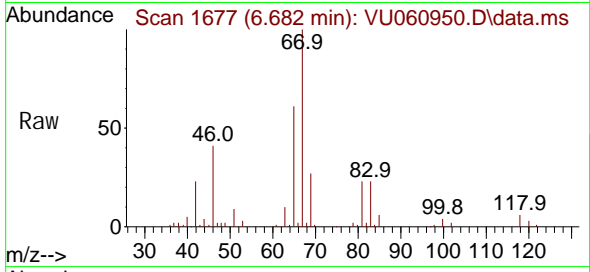




#35  
Methyl cycl ohexane  
Concen: 0.831 ug/L  
RT: 6.682 min Scan# 1677  
Delta R.T. -0.074 min  
Lab File: VU060950.D  
Acq: 20 Sep 2024 18:02

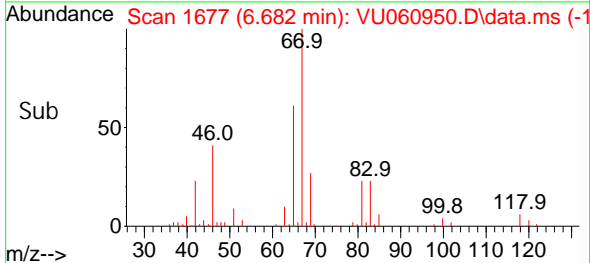
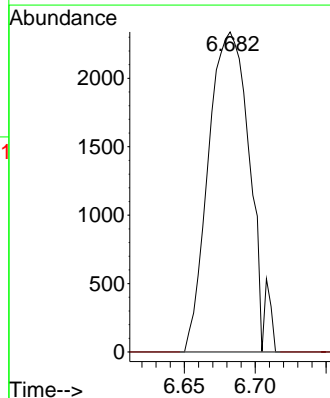
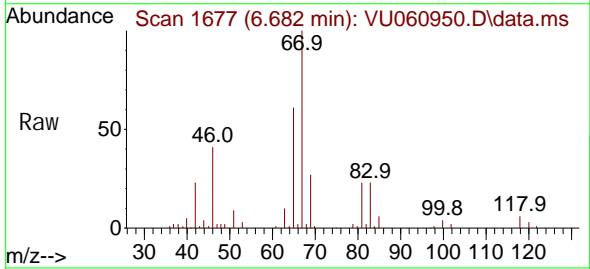
Instrument : MSVOA\_U  
ClientSampleId :

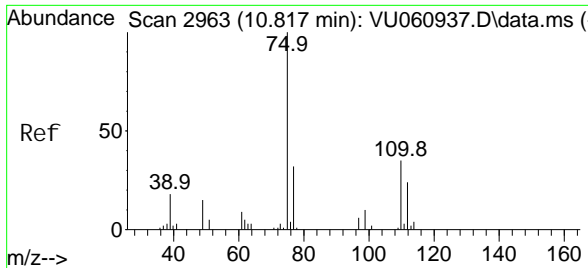
Tgt Ion: 83 Resp: 11179  
Ion Ratio Lower Upper  
83 100  
55 0.2 62.6 94.0#  
98 0.0 37.6 56.4#



#37  
1,2-Di chl oropropane  
Concen: 0.461 ug/L  
RT: 6.682 min Scan# 1677  
Delta R.T. -0.100 min  
Lab File: VU060950.D  
Acq: 20 Sep 2024 18:02

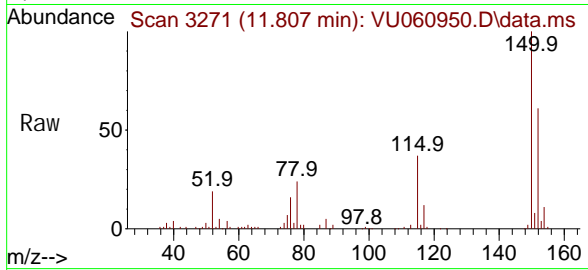
Tgt Ion: 63 Resp: 4758  
Ion Ratio Lower Upper  
63 100  
112 0.0 2.0 3.0#





#61  
 1, 2, 3-Tri chl oropropane  
 Concen: 1.238 ug/L  
 RT: 11.807 min Scan# 31  
 Del ta R.T. 0.990 min  
 Lab File: VU060950.D  
 Acq: 20 Sep 2024 18:02

Instrument :  
 MSVOA\_U  
 ClientSampleId :



Tgt Ion: 75 Resp: 6540

Ion	Ratio	Lower	Upper
75	100		
110	0.6	28.6	43.0#
77	37.0	26.3	39.5

