

Data Path : Z:\voasrv\HPCHEM1\MSVOA_U\Data\VU110422\
 Data File : VU051753.D
 Acq On : 04 Nov 2022 12:16
 Operator : JC/MD
 Sample : N5407-17
 Misc : 25.0mL/MSVOA_U/WATER
 ALS Vial : 6 Sample Multiplier: 1

Instrument :
 MSVOA_U
 ClientSampleId :
 EW4Z4

Integration Parameters: rteint.p
 Integrator: RTE
 Smoothing : ON
 Sampling : 1
 Start Thrs : 0.1
 Stop Thrs : 0
 Filtering: 5
 Min Area: 3 % of largest Peak
 Max Peaks: 100
 Peak Location: TOP

If leading or trailing edge < 100 prefer < Baseline drop else tangent >
 Peak separation: 5

Method : Z:\voasrv\HPCHEM1\MSVOA_U\Method\SFAMUTR102822WMA.M
 Title : TRACE VOA SFAM1.0

Signal : TIC: VU051753.D\data.ms

peak #	R.T. min	first scan	max scan	last scan	PK TY	peak height	corr. area	corr. % max.	% of total
1	1.462	29	38	53	rBV	406784	648712	85.83%	9.986%
2	1.597	74	80	112	rVB2	91543	173735	22.99%	2.674%
3	1.729	115	121	128	rVV	64044	69314	9.17%	1.067%
4	1.912	171	178	188	rVB	67754	88170	11.67%	1.357%
5	2.565	369	381	393	rBV	119283	195807	25.91%	3.014%
6	2.623	393	399	413	rVB	8089	13286	1.76%	0.205%
7	3.835	755	776	778	rBV	5423	13905	1.84%	0.214%
8	4.620	1008	1020	1054	rBV	124498	321734	42.57%	4.953%
9	5.060	1141	1157	1180	rBV	138472	316342	41.86%	4.870%
10	5.723	1343	1363	1387	rBV2	243504	654369	86.58%	10.073%
11	6.247	1511	1526	1544	rBV	204055	392325	51.91%	6.039%
12	6.690	1648	1664	1683	rBV	165826	328910	43.52%	5.063%
13	7.565	1922	1936	1960	rBV	71970	128503	17.00%	1.978%
14	7.896	2026	2039	2055	rBV	257494	457573	60.54%	7.044%
15	7.967	2057	2061	2076	rVB2	7524	12310	1.63%	0.189%
16	8.179	2116	2127	2145	rBV2	44593	77618	10.27%	1.195%
17	8.472	2208	2218	2227	rBV2	11947	19728	2.61%	0.304%
18	8.632	2256	2268	2298	rBV	402049	755798	100.00%	11.634%
19	9.417	2499	2512	2532	rBV	315749	541462	71.64%	8.335%
20	10.754	2915	2928	2944	rBV2	155651	246379	32.60%	3.793%
21	10.890	2959	2970	2983	rVB2	22606	36922	4.89%	0.568%
22	11.809	3244	3256	3276	rBV	314881	509751	67.45%	7.847%
23	12.063	3328	3335	3348	rBV5	7815	14310	1.89%	0.220%
24	12.192	3362	3375	3399	rBV	279579	464692	61.48%	7.153%
25	12.889	3580	3592	3607	rVB6	8948	14676	1.94%	0.226%

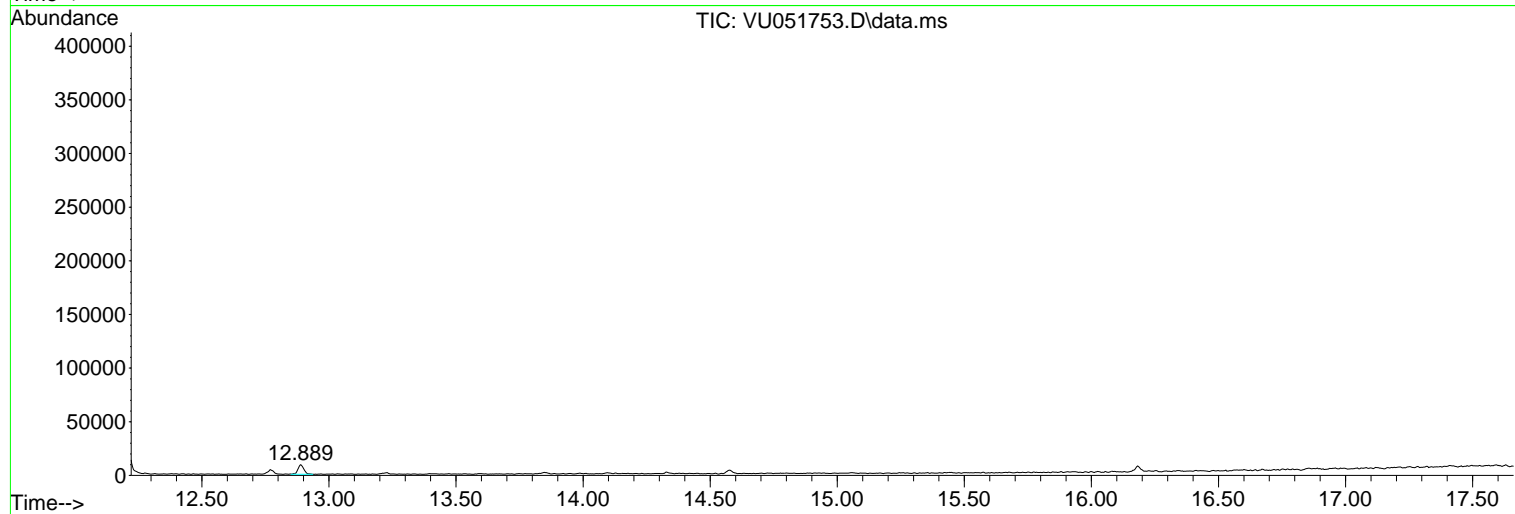
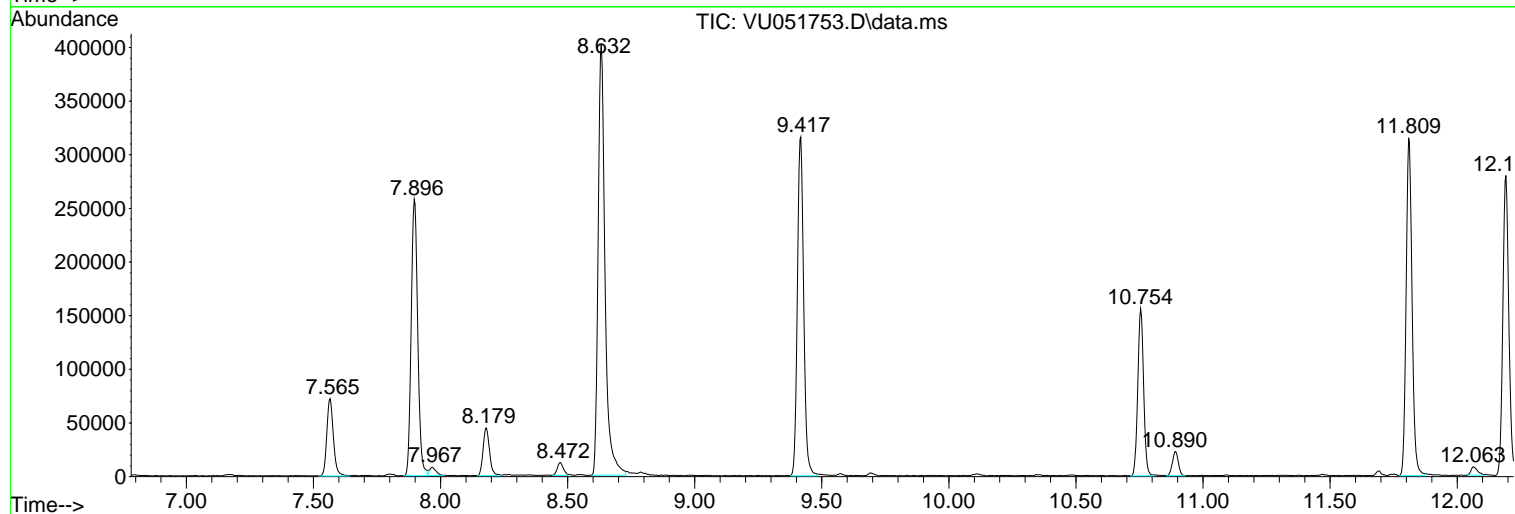
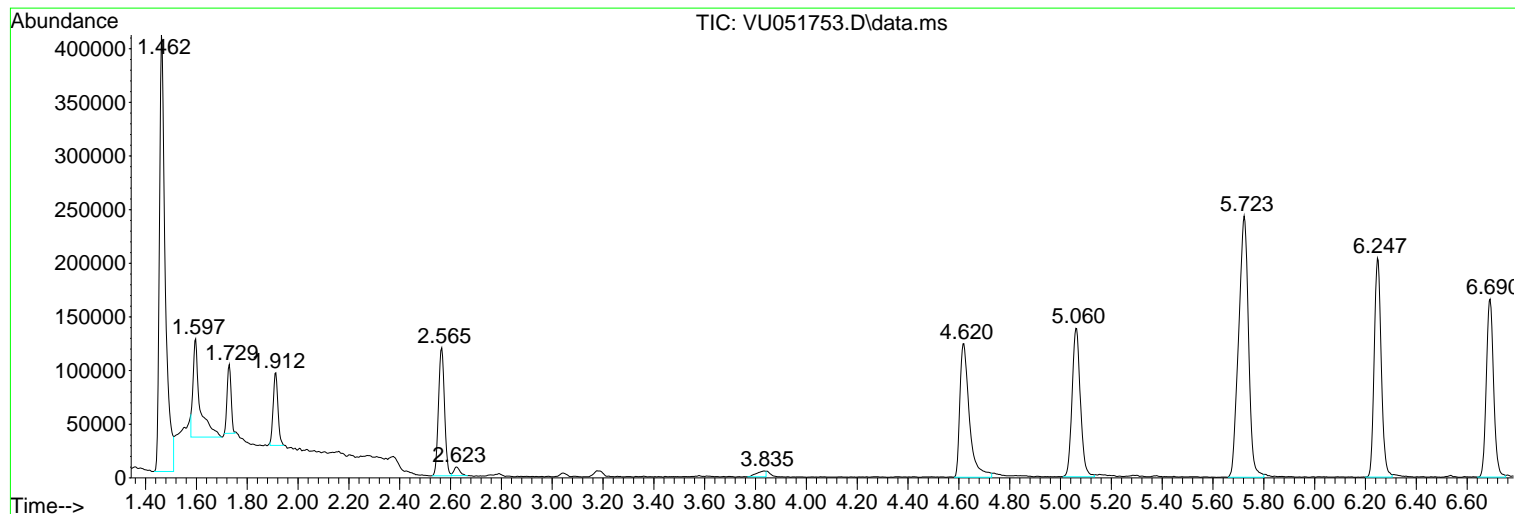
Sum of corrected areas: 6496331

Data Path : Z:\voasrv\HPCHEM1\MSVOA_U\Data\VU110422\
Data File : VU051753.D
Acq On : 04 Nov 2022 12:16
Operator : JC/MD
Sample : N5407-17
Misc : 25.0mL/MSVOA_U/WATER
ALS Vial : 6 Sample Multiplier: 1

Instrument :
MSVOA_U
ClientSampleId :
EW4Z4

Quant Method : Z:\voasrv\HPCHEM1\MSVOA_U\Method\SFAMUTR102822WMA.M
Quant Title : TRACE VOA SFAM1.0

TIC Library : C:\Database\NIST20.L
TIC Integration Parameters: LSCINT.P



Data Path : Z:\voasrv\HPCHEM1\MSVOA_U\Data\VU110422\
 Data File : VU051753.D
 Acq On : 04 Nov 2022 12:16
 Operator : JC/MD
 Sample : N5407-17
 Misc : 25.0mL/MSVOA_U/WATER
 ALS Vial : 6 Sample Multiplier: 1

Instrument :
 MSVOA_U
 ClientSampleId :
 EW4Z4

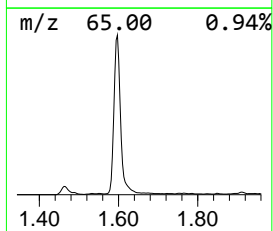
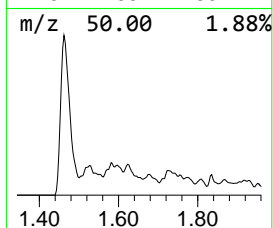
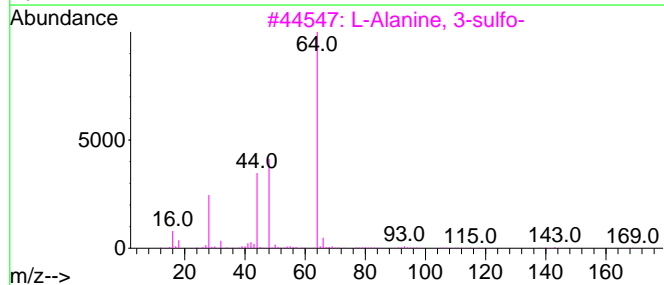
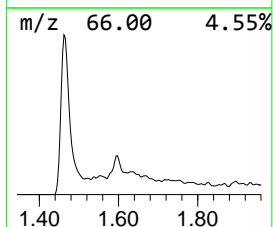
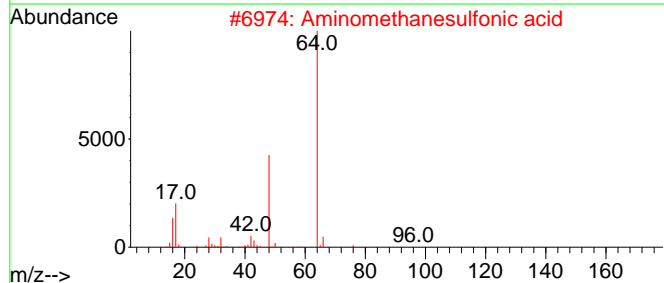
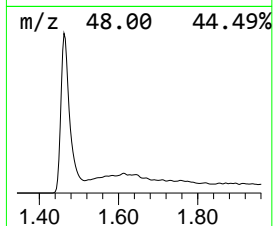
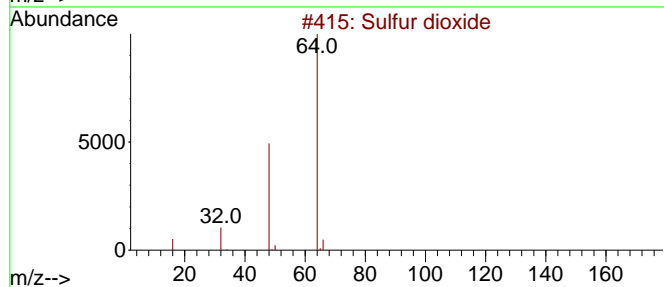
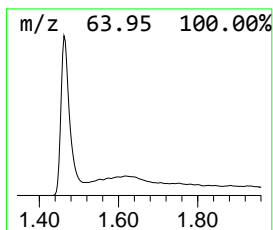
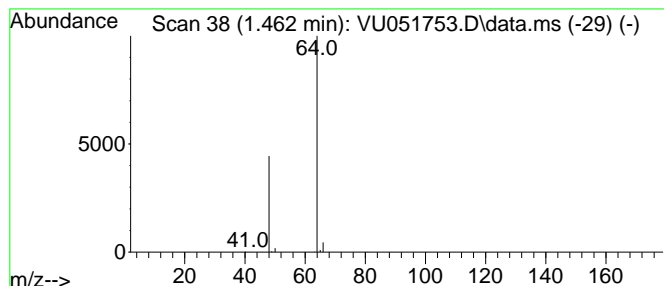
Quant Method : Z:\voasrv\HPCHEM1\MSVOA_U\Method\SFAMUTR102822WMA.M
 Quant Title : TRACE VOA SFAM1.0

TIC Library : C:\Database\NIST20.L
 TIC Integration Parameters: LSCINT.P

 Peak Number 1 Sulfur dioxide Concentration Rank 1

R.T.	EstConc	Area	Relative to ISTD	R.T.
1.462	8.27 ug/L	648712	1,4-Difluorobenzene	6.250

Hit#	of 5	Tentative ID	MW	MolForm	CAS#	Qual
1		Sulfur dioxide	64	O2S	007446-09-5	83
2		Aminomethanesulfonic acid	111	CH5NO3S	013881-91-9	74
3		L-Alanine, 3-sulfo-	169	C3H7NO5S	000498-40-8	9
4		Sulfur dioxide	64	O2S	007446-09-5	5
5		Ethyl Chloride	64	C2H5Cl	000075-00-3	3



Data Path : Z:\voasrv\HPCHEM1\MSVOA_U\Data\VU110422\
Data File : VU051753.D
Acq On : 04 Nov 2022 12:16
Operator : JC/MD
Sample : N5407-17
Misc : 25.0mL/MSVOA_U/WATER
ALS Vial : 6 Sample Multiplier: 1

Instrument :
MSVOA_U
ClientSampleId :
EW4Z4

Quant Method : Z:\voasrv\HPCHEM1\MSVOA_U\Method\SFAMUTR102822WMA.M
Quant Title : TRACE VOA SFAM1.0

TIC Library : C:\Database\NIST0.L
TIC Integration Parameters: LSCINT.P

TIC Top Hit name	RT	EstConc	Units	Response	--Internal Standard--			
					#	RT	Resp	Conc
Sulfur dioxide	1.462	8.3	ug/L	648712	1	6.250	392325	5.0