

Data Path : Z:\voasrv\HPCHEM1\MSVOA_U\Data\VU110424\
 Data File : VU061416.D
 Acq On : 04 Nov 2024 18:36
 Operator : MD/SY
 Sample : P4690-16
 Misc : 25mL/MSVOA_U/WATER
 ALS Vial : 23 Sample Multiplier: 1

Instrument :
 MSVOA_U
 ClientSampleId :
 COCN6

Quant Time: Nov 05 00:51:48 2024
 Quant Method : Z:\voasrv\HPCHEM1\MSVOA_U\Method\SFAMUTR102324WMA.M
 Quant Title : TRACE VOA SFAM1.0
 QLast Update : Fri Nov 01 00:44:02 2024
 Response via : Initial Calibration

Compound	R.T.	QIon	Response	Conc	Units	Dev(Min)

Internal Standards						
1) 1,4-Difluorobenzene	6.242	114	153283	5.000	ug/L	0.00
28) Chlorobenzene-d5	9.412	117	142232	5.000	ug/L	0.00
58) 1,4-Dichlorobenzene-d4	11.804	152	63478	5.000	ug/L	0.00
System Monitoring Compounds						
4) Vinyl Chloride-d3	1.596	65	34015	3.267	ug/L	0.00
Spiked Amount	5.000	Range 40 - 130	Recovery	=	65.400%	
7) Chloroethane-d5	1.908	69	37529	3.932	ug/L	0.00
Spiked Amount	5.000	Range 65 - 130	Recovery	=	78.600%	
11) 1,1-Dichloroethene-d2	2.560	65	16379	3.677	ug/L	0.00
Spiked Amount	5.000	Range 60 - 125	Recovery	=	73.600%	
20) 2-Butanone-d5	4.621	46	101118	47.831	ug/L	0.00
Spiked Amount	50.000	Range 40 - 130	Recovery	=	95.660%	
24) Chloroform-d	5.055	84	85713	4.337	ug/L	0.00
Spiked Amount	5.000	Range 70 - 125	Recovery	=	86.800%	
26) 1,2-Dichloroethane-d4	5.695	65	44720	4.539	ug/L	0.00
Spiked Amount	5.000	Range 70 - 130	Recovery	=	90.800%	
32) Benzene-d6	5.718	84	174172	4.346	ug/L	0.00
Spiked Amount	5.000	Range 70 - 125	Recovery	=	87.000%	
36) 1,2-Dichloropropane-d6	6.682	67	54887	4.555	ug/L	0.00
Spiked Amount	5.000	Range 60 - 140	Recovery	=	91.200%	
41) Toluene-d8	7.891	98	151842	4.052	ug/L	0.00
Spiked Amount	5.000	Range 70 - 130	Recovery	=	81.000%	
43) trans-1,3-Dichloroprop...	8.177	79	18130	3.686	ug/L	0.00
Spiked Amount	5.000	Range 55 - 130	Recovery	=	73.800%	
46) 2-Hexanone-d5	8.627	63	82805	41.106	ug/L	0.00
Spiked Amount	50.000	Range 45 - 130	Recovery	=	82.220%	
56) 1,1,2,2-Tetrachloroeth...	10.750	84	41055	4.506	ug/L	0.00
Spiked Amount	5.000	Range 65 - 120	Recovery	=	90.200%	
66) 1,2-Dichlorobenzene-d4	12.187	152	51021	4.539	ug/L	0.00
Spiked Amount	5.000	Range 80 - 120	Recovery	=	90.800%	

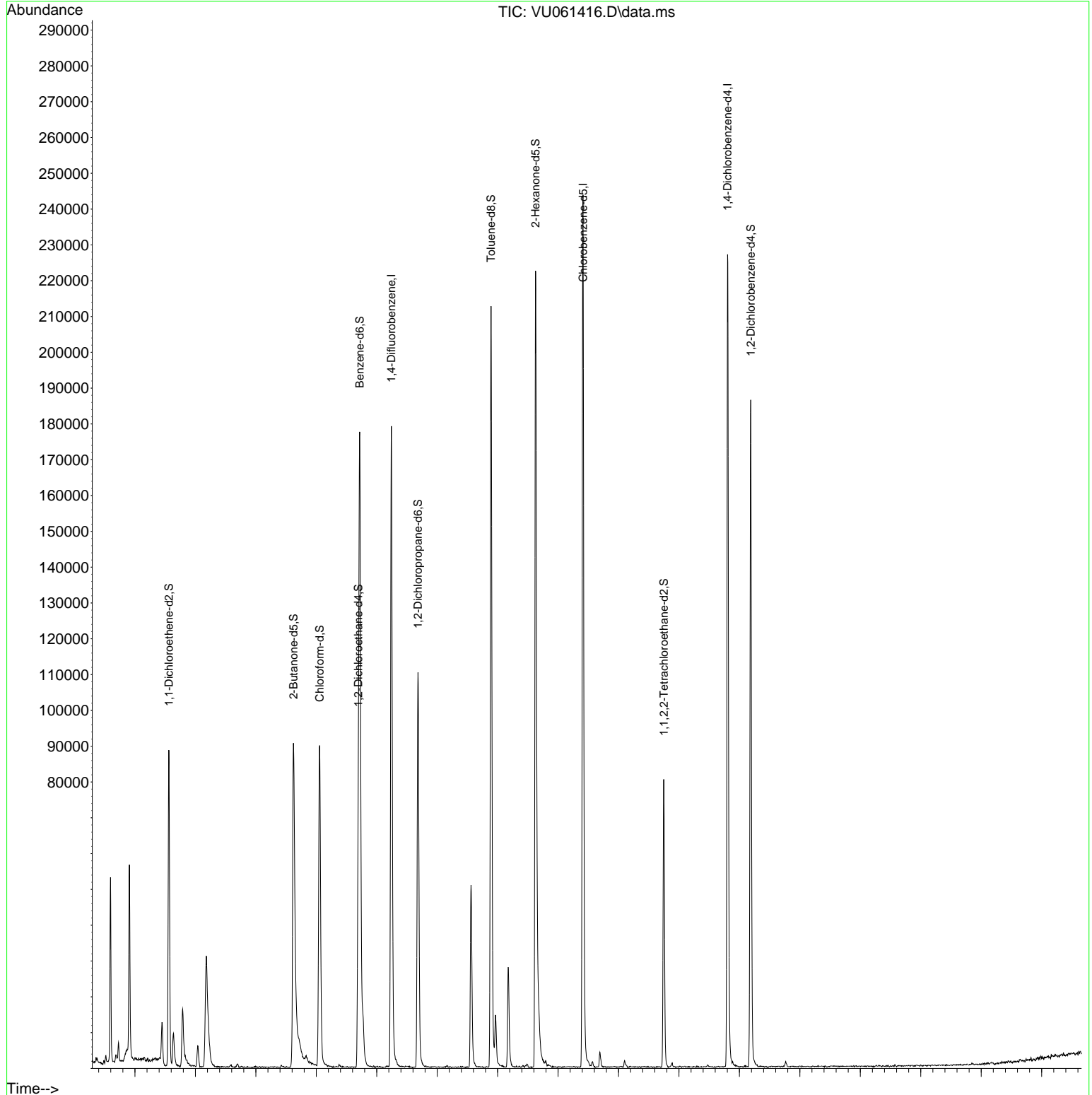
Target Compounds						Qvalue
3) Chloromethane	1.515	50	1491	0.138	ug/L	90
13) Acetone	2.637	43	11856	8.854	ug/L	94
14) Carbon disulfide	2.789	76	20506	0.678	ug/L	97
16) Methylene chloride	3.039	84	2884	0.270	ug/L	96
21) 2-Butanone	4.734	43	5126	2.415	ug/L	90
33) Benzene	5.769	78	11441	0.260	ug/L	100
42) Toluene	7.965	91	11023	0.231	ug/L	94

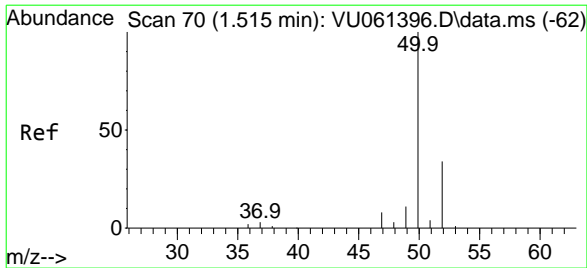
(#) = qualifier out of range (m) = manual integration (+) = signals summed

Data Path : Z:\voasrv\HPCHEM1\MSVOA_U\Data\VU110424\
 Data File : VU061416.D
 Acq On : 04 Nov 2024 18:36
 Operator : MD/SY
 Sample : P4690-16
 Misc : 25mL/MSVOA_U/WATER
 ALS Vial : 23 Sample Multiplier: 1

Instrument :
 MSVOA_U
 ClientSampleId :
 COCN6

Quant Time: Nov 05 00:51:48 2024
 Quant Method : Z:\voasrv\HPCHEM1\MSVOA_U\Method\SFAMUTR102324WMA.M
 Quant Title : TRACE VOA SFAM1.0
 QLast Update : Fri Nov 01 00:44:02 2024
 Response via : Initial Calibration

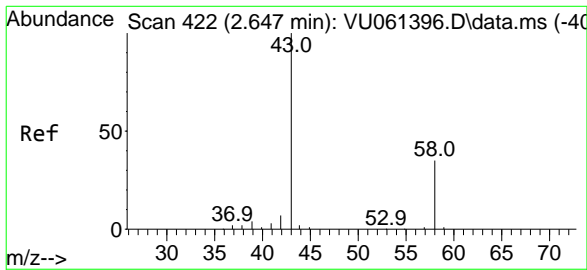
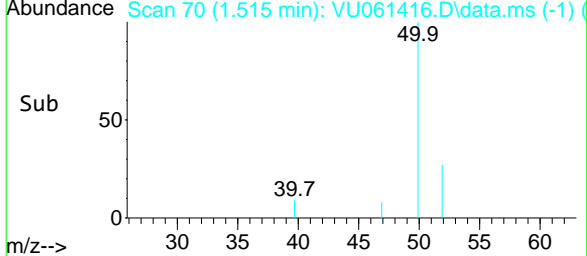
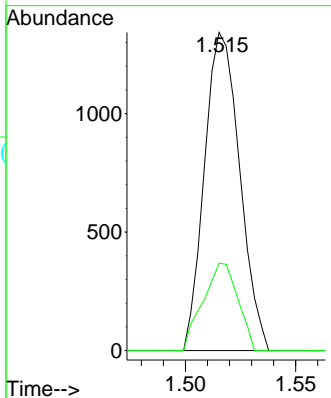
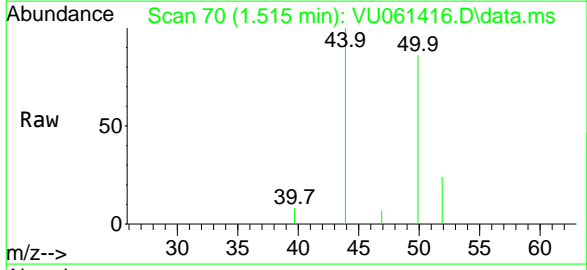




#3
 Chloromethane
 Concen: 0.138 ug/L
 RT: 1.515 min Scan# 70
 Delta R.T. -0.003 min
 Lab File: VU061416.D
 Acq: 04 Nov 2024 18:36

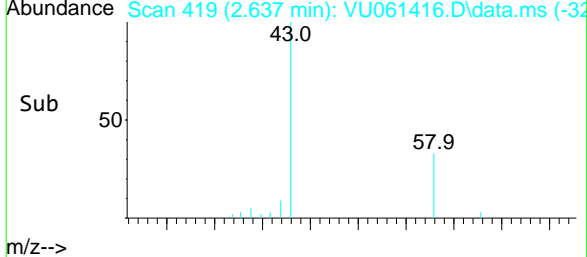
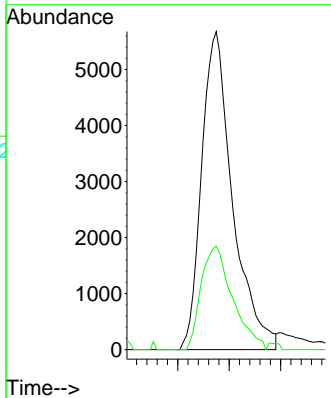
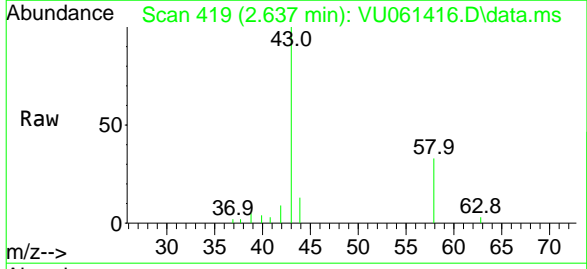
Instrument : MSVOA_U
 ClientSampleId : COCN6

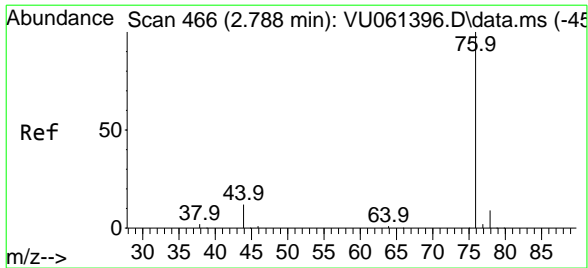
Tgt Ion: 50 Resp: 1491
 Ion Ratio Lower Upper
 50 100
 52 27.5 23.4 43.4



#13
 Acetone
 Concen: 8.854 ug/L
 RT: 2.637 min Scan# 419
 Delta R.T. -0.006 min
 Lab File: VU061416.D
 Acq: 04 Nov 2024 18:36

Tgt Ion: 43 Resp: 11856
 Ion Ratio Lower Upper
 43 100
 58 33.0 0.0 73.2





#14

Carbon disulfide

Concen: 0.678 ug/L

RT: 2.789 min Scan# 466

Delta R.T. 0.000 min

Lab File: VU061416.D

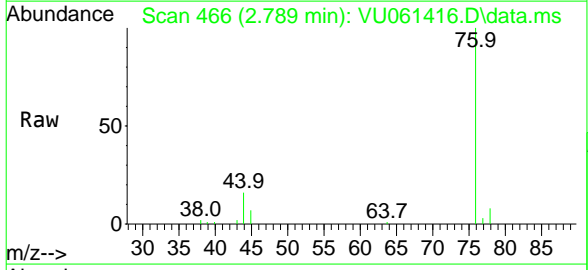
Acq: 04 Nov 2024 18:36

Instrument :

MSVOA_U

ClientSampleId :

COCN6

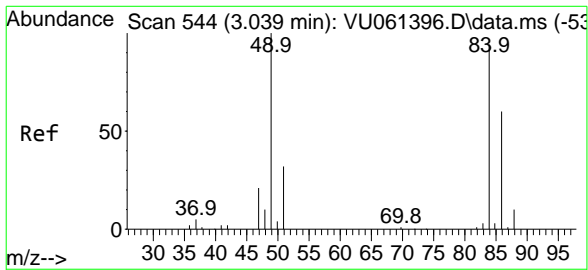
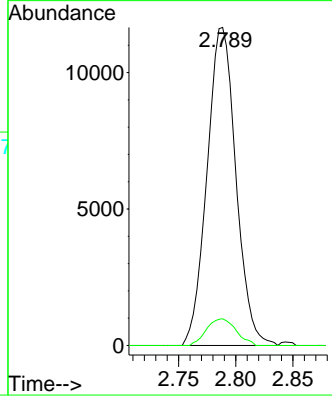
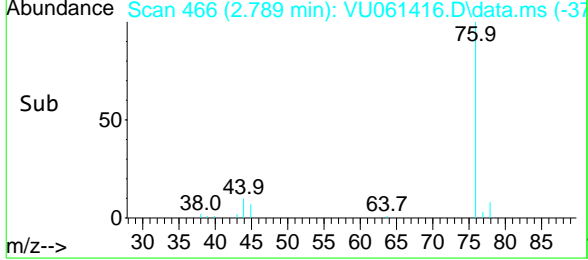


Tgt Ion: 76 Resp: 20506

Ion Ratio Lower Upper

76 100

78 8.4 7.4 11.2



#16

Methylene chloride

Concen: 0.270 ug/L

RT: 3.039 min Scan# 544

Delta R.T. 0.000 min

Lab File: VU061416.D

Acq: 04 Nov 2024 18:36

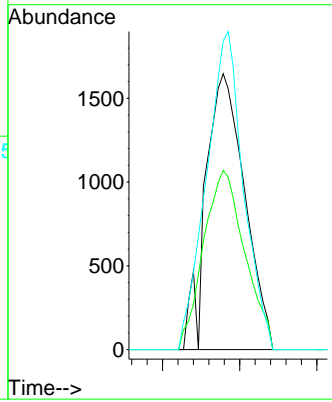
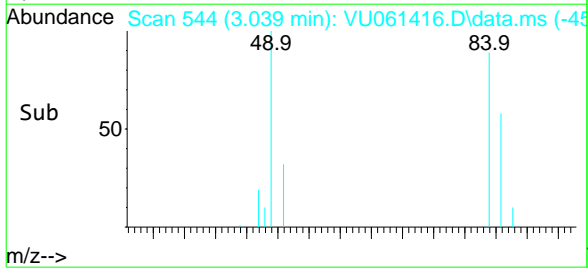
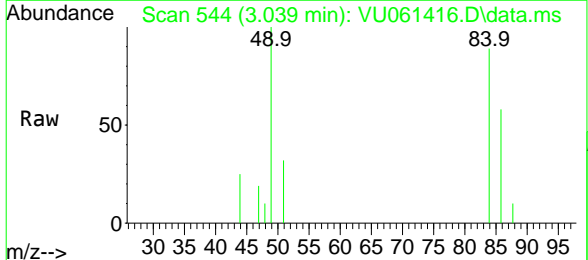
Tgt Ion: 84 Resp: 2884

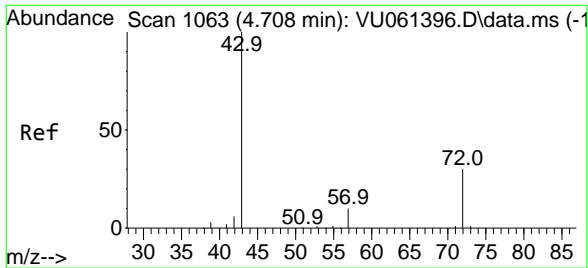
Ion Ratio Lower Upper

84 100

86 65.0 43.5 80.7

49 111.9 75.7 140.7

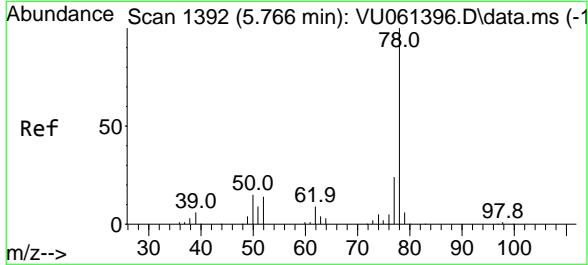
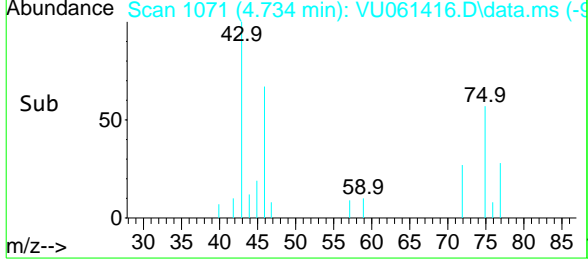
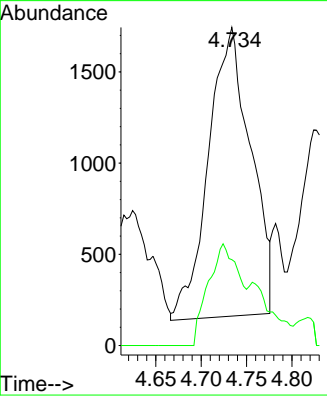
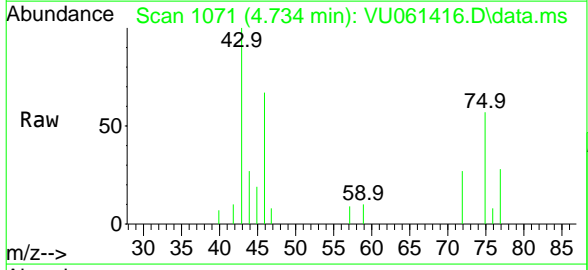




#21
 2-Butanone
 Concen: 2.415 ug/L
 RT: 4.734 min Scan# 1063
 Delta R.T. 0.029 min
 Lab File: VU061416.D
 Acq: 04 Nov 2024 18:36

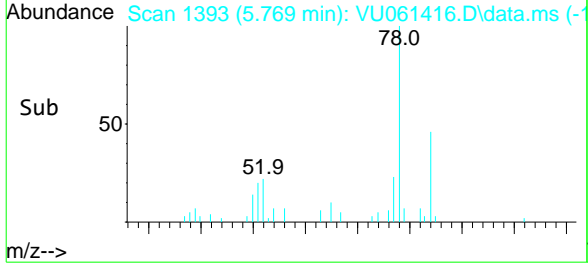
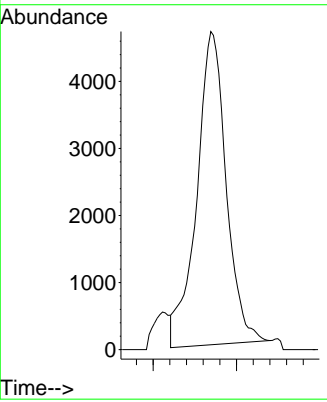
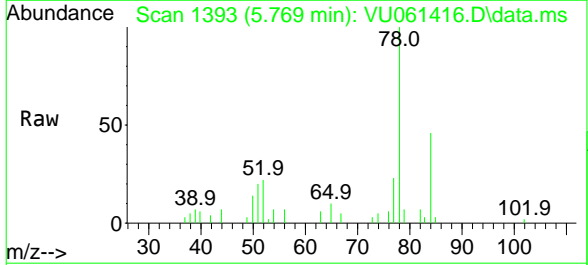
Instrument : MSVOA_U
 ClientSampleId : COCN6

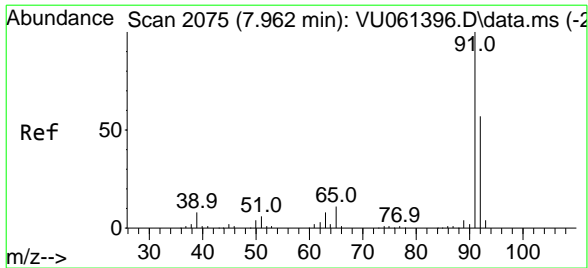
Tgt Ion: 43 Resp: 5126
 Ion Ratio Lower Upper
 43 100
 72 26.0 15.9 47.6



#33
 Benzene
 Concen: 0.260 ug/L
 RT: 5.769 min Scan# 1393
 Delta R.T. 0.003 min
 Lab File: VU061416.D
 Acq: 04 Nov 2024 18:36

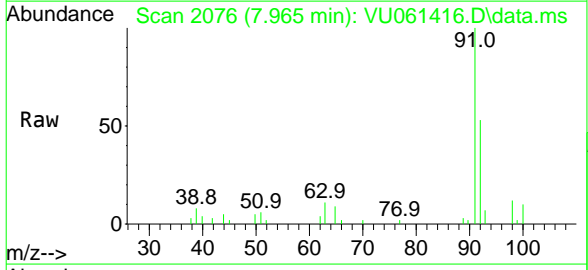
Tgt Ion: 78 Resp: 11441





#42
 Toluene
 Concen: 0.231 ug/L
 RT: 7.965 min Scan# 20
 Delta R.T. 0.003 min
 Lab File: VU061416.D
 Acq: 04 Nov 2024 18:36

Instrument : MSVOA_U
 ClientSampleId : COCN6



Tgt Ion: 91 Resp: 11023
 Ion Ratio Lower Upper
 91 100
 92 53.3 40.3 74.8

