

Data Path : Z:\voasrv\HPCHEM1\MSVOA_U\Data\VU110821\
 Data File : VU045644.D
 Acq On : 09 Nov 2021 03:03
 Operator : SY/MD
 Sample : PB140545TB
 Misc : 5.0mL/MSVOA_U/WATER
 ALS Vial : 47 Sample Multiplier: 1

Instrument :
 MSVOA_U
 ClientSampleId :
 PB140545TB

Quant Time: Nov 09 11:17:17 2021
 Quant Method : Z:\voasrv\HPCHEM1\MSVOA_U\Method\82U110521W.M
 Quant Title : SW846 8260
 QLast Update : Fri Nov 05 13:35:16 2021
 Response via : Initial Calibration

Compound	R.T.	QIon	Response	Conc	Units	Dev(Min)

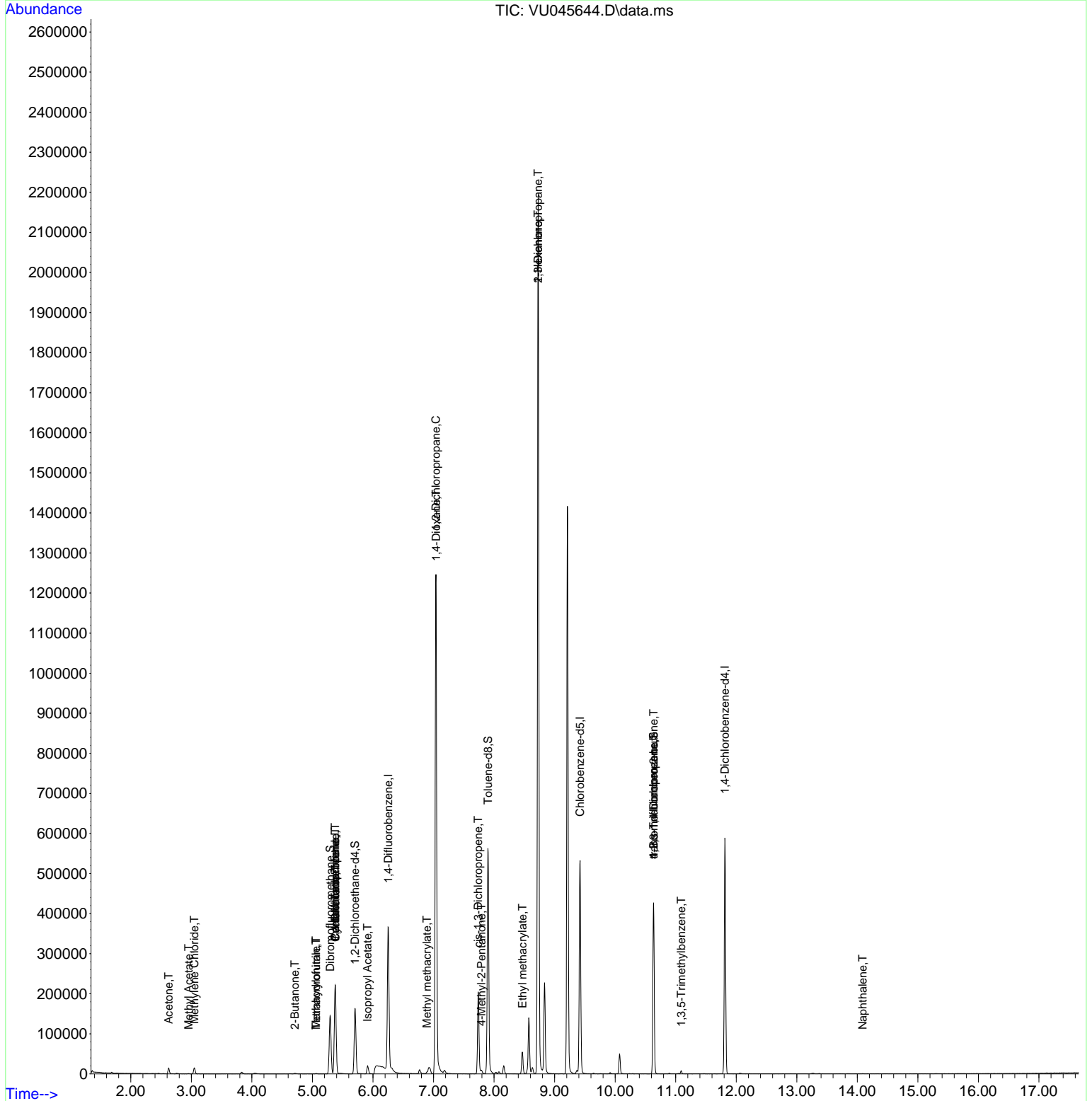
Internal Standards						
1) Pentafluorobenzene	5.375	168	147367	50.000	ug/l	0.00
34) 1,4-Difluorobenzene	6.253	114	282713	50.000	ug/l	0.00
63) Chlorobenzene-d5	9.420	117	288865	50.000	ug/l	0.00
72) 1,4-Dichlorobenzene-d4	11.812	152	143674	50.000	ug/l	0.00
System Monitoring Compounds						
33) 1,2-Dichloroethane-d4	5.703	65	119883	54.320	ug/l	0.00
Spiked Amount	50.000	Range 78 - 117	Recovery	=	108.640%	
35) Dibromofluoromethane	5.292	113	94284	49.951	ug/l	0.00
Spiked Amount	50.000	Range 75 - 124	Recovery	=	99.900%	
50) Toluene-d8	7.899	98	374037	53.291	ug/l	0.00
Spiked Amount	50.000	Range 92 - 112	Recovery	=	106.580%	
62) 4-Bromofluorobenzene	10.636	95	143774	51.084	ug/l	0.00
Spiked Amount	50.000	Range 83 - 123	Recovery	=	102.160%	
Target Compounds						
						Qvalue
16) Acetone	2.626	43	15633	13.915	ug/l	97
18) Methyl Acetate	2.954	43	814	0.213	ug/l #	60
20) Methylene Chloride	3.051	84	7330	3.755	ug/l	98
25) 2-Butanone	4.710	43	2748	1.764	ug/l	94
29) Tetrahydrofuran	5.060	42	682	0.716	ug/l #	61
31) Cyclohexane	5.379	56	3499	1.087	ug/l #	1
36) 1,1-Dichloropropene	5.375	75	12945	4.696	ug/l #	50
38) Carbon Tetrachloride	5.375	117	15579	5.606	ug/l #	16
41) Methacrylonitrile	5.060	41	338	0.202	ug/l #	22
43) Isopropyl Acetate	5.912	43	21118	4.360	ug/l	99
45) 1,2-Dichloropropane	7.041	63	1413	0.654	ug/l #	43
48) Methyl methacrylate	6.893	41	6162	2.764	ug/l #	13
49) 1,4-Dioxane	7.044	88	67	1.169	ug/l #	1
51) 4-Methyl-2-Pentanone	7.793	43	5539	1.734	ug/l	87
54) cis-1,3-Dichloropropene	7.739	75	37362	10.780	ug/l #	62
56) Ethyl methacrylate	8.468	69	107	2.451	ug/l #	1
57) 1,3-Dichloropropane	8.729	76	22064	5.916	ug/l #	42
59) 2-Hexanone	8.729	43	290048	108.721	ug/l #	48
76) 1,2,3-Trichloropropane	10.636	75	75724	17.380	ug/l #	42
80) 1,3,5-Trimethylbenzene	11.092	105	4729	0.577	ug/l	97
81) trans-1,4-Dichloro-2-b...	10.636	75	75724	56.520	ug/l #	12
95) Naphthalene	14.089	128	412	1.064	ug/l #	69

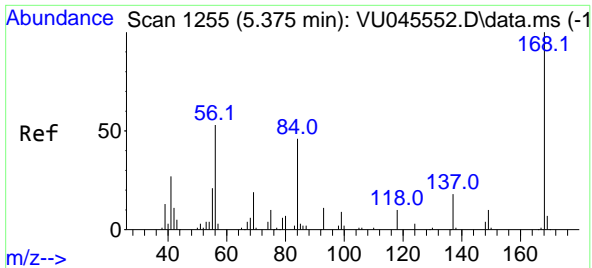
(#) = qualifier out of range (m) = manual integration (+) = signals summed

Data Path : Z:\voasrv\HPCHEM1\MSVOA_U\Data\VU110821\
 Data File : VU045644.D
 Acq On : 09 Nov 2021 03:03
 Operator : SY/MD
 Sample : PB140545TB
 Misc : 5.0mL/MSVOA_U/WATER
 ALS Vial : 47 Sample Multiplier: 1

Instrument :
 MSVOA_U
 ClientSampleId :
 PB140545TB

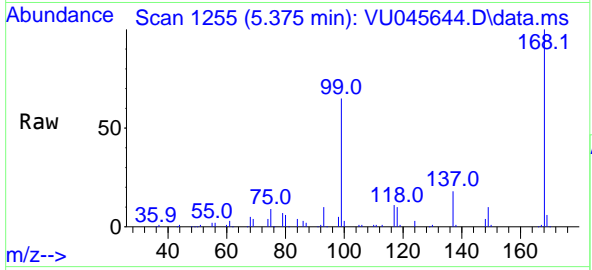
Quant Time: Nov 09 11:17:17 2021
 Quant Method : Z:\voasrv\HPCHEM1\MSVOA_U\Method\82U110521W.M
 Quant Title : SW846 8260
 QLast Update : Fri Nov 05 13:35:16 2021
 Response via : Initial Calibration



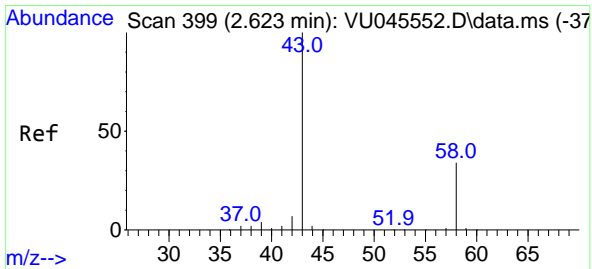
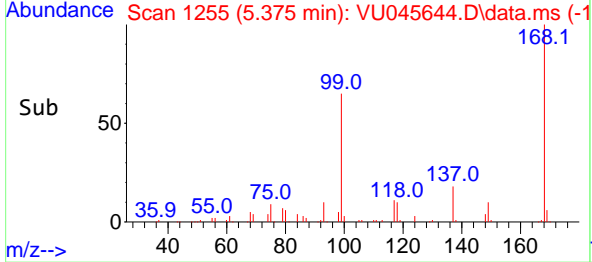
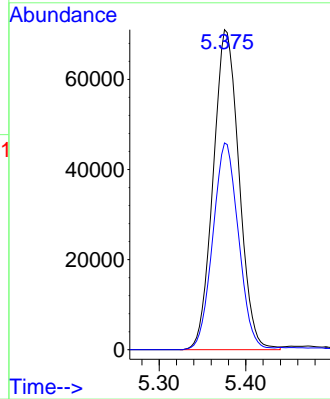


#1
 Pentafluorobenzene
 Concen: 50.000 ug/l
 RT: 5.375 min Scan# 11
 Delta R.T. 0.000 min
 Lab File: VU045644.D
 Acq: 09 Nov 2021 03:03

Instrument :
 MSVOA_U
 ClientSampleId :
 PB140545TB

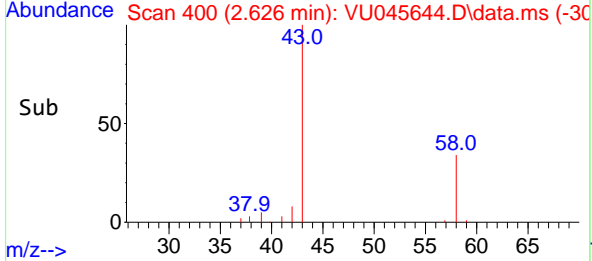
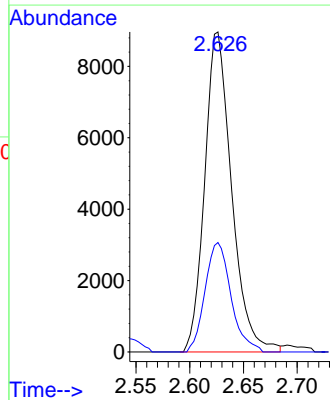
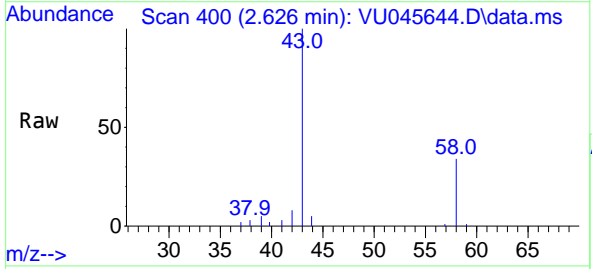


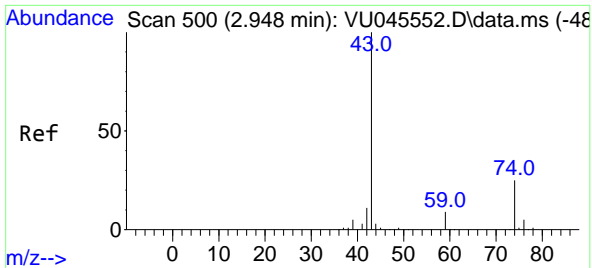
Tgt Ion:168 Resp: 147367
 Ion Ratio Lower Upper
 168 100
 99 64.6 51.0 76.6



#16
 Acetone
 Concen: 13.915 ug/l
 RT: 2.626 min Scan# 400
 Delta R.T. 0.003 min
 Lab File: VU045644.D
 Acq: 09 Nov 2021 03:03

Tgt Ion: 43 Resp: 15633
 Ion Ratio Lower Upper
 43 100
 58 34.2 26.2 39.2

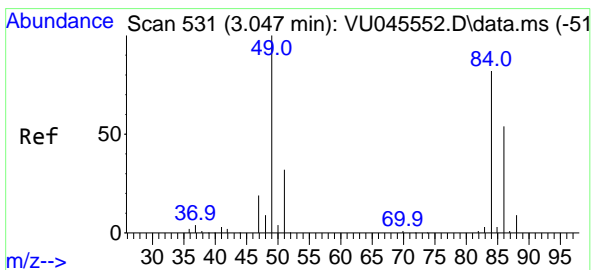
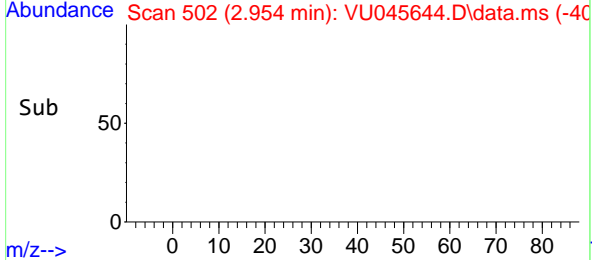
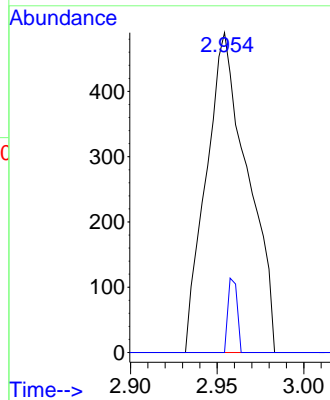
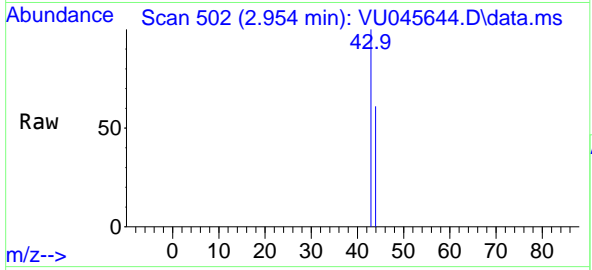




#18
Methyl Acetate
Concen: 0.213 ug/l
RT: 2.954 min Scan# 500
Delta R.T. 0.006 min
Lab File: VU045644.D
Acq: 09 Nov 2021 03:03

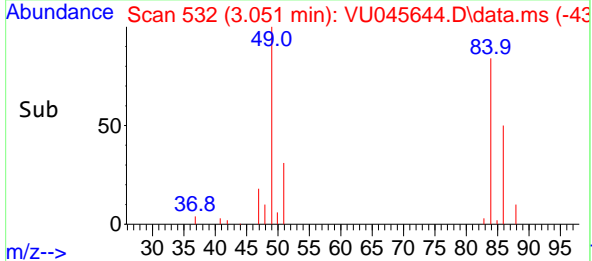
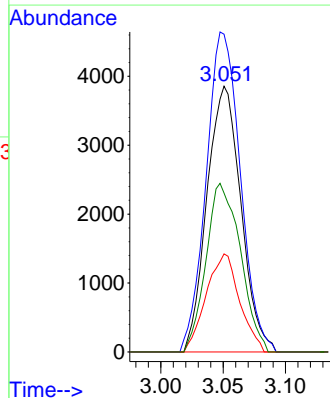
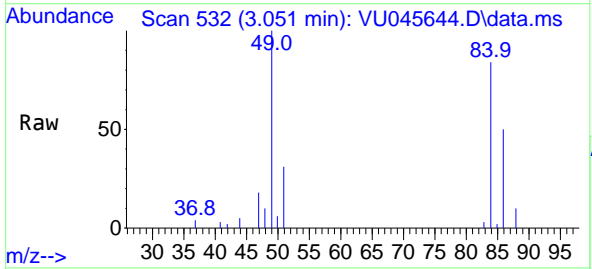
Instrument : MSVOA_U
Client Sample Id : PB140545TB

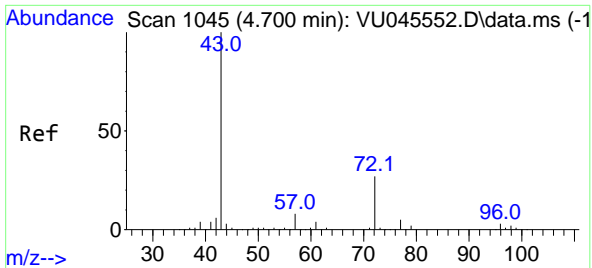
Tgt Ion: 43 Resp: 814
Ion Ratio Lower Upper
43 100
74 5.2 20.2 30.2#



#20
Methylene Chloride
Concen: 3.755 ug/l
RT: 3.051 min Scan# 532
Delta R.T. 0.003 min
Lab File: VU045644.D
Acq: 09 Nov 2021 03:03

Tgt Ion: 84 Resp: 7330
Ion Ratio Lower Upper
84 100
49 119.5 96.4 144.6
51 36.9 30.5 45.7
86 59.8 50.3 75.5



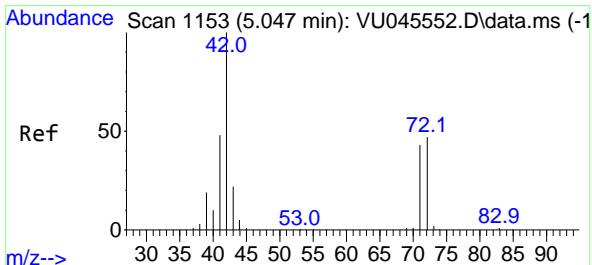
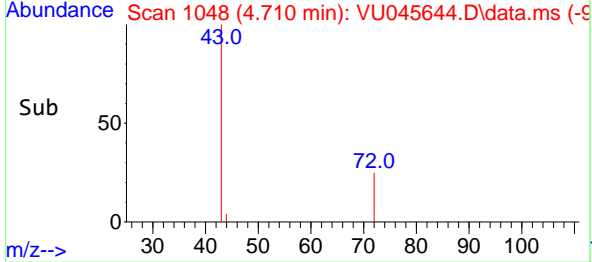
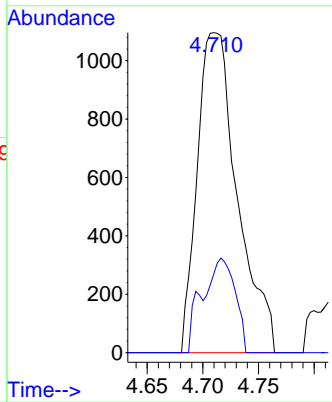
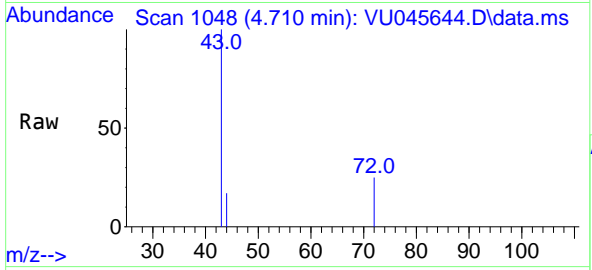


#25
 2-Butanone
 Concen: 1.764 ug/l
 RT: 4.710 min Scan# 1107
 Delta R.T. 0.010 min
 Lab File: VU045644.D
 Acq: 09 Nov 2021 03:03

Instrument : MSVOA_U
 ClientSampleId : PB140545TB

Tgt Ion: 43 Resp: 2748

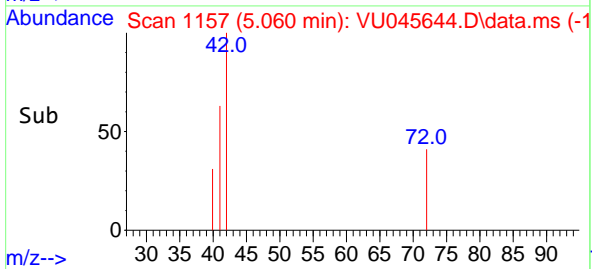
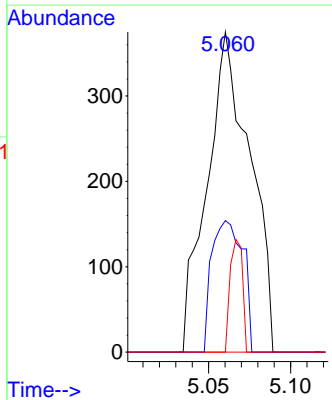
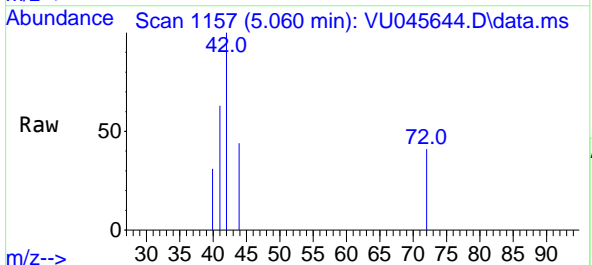
Ion	Ratio	Lower	Upper
43	100		
72	24.5	22.0	33.0

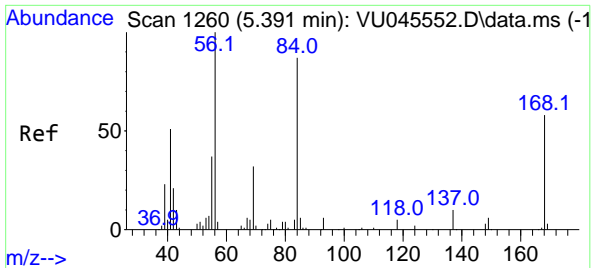


#29
 Tetrahydrofuran
 Concen: 0.716 ug/l
 RT: 5.060 min Scan# 1157
 Delta R.T. 0.013 min
 Lab File: VU045644.D
 Acq: 09 Nov 2021 03:03

Tgt Ion: 42 Resp: 682

Ion	Ratio	Lower	Upper
42	100		
72	29.9	38.2	57.4#
71	10.1	35.4	53.2#



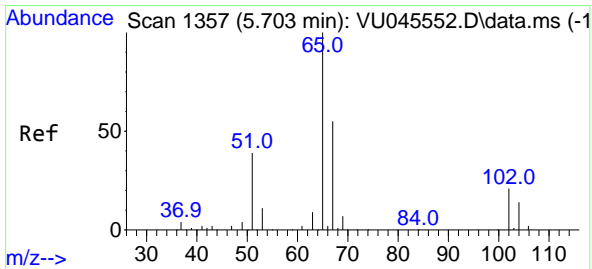
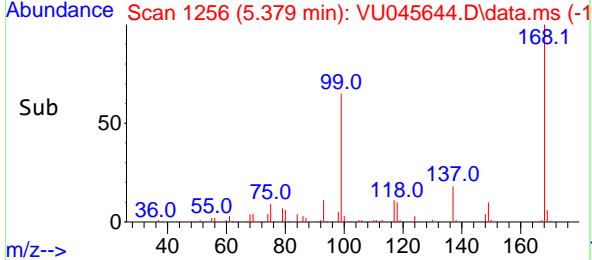
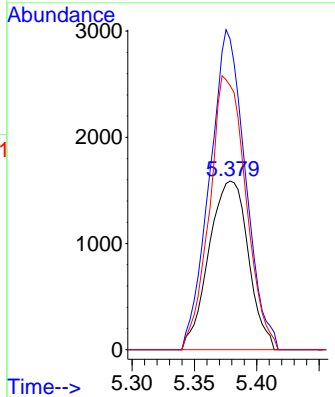
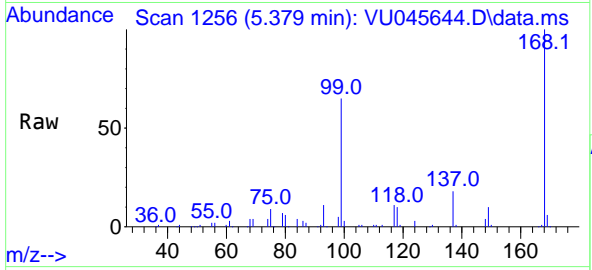


#31
 Cyclohexane
 Concen: 1.087 ug/l
 RT: 5.379 min Scan# 11
 Delta R.T. -0.013 min
 Lab File: VU045644.D
 Acq: 09 Nov 2021 03:03

Instrument : MSVOA_U
 ClientSampleId : PB140545TB

Tgt Ion: 56 Resp: 3499

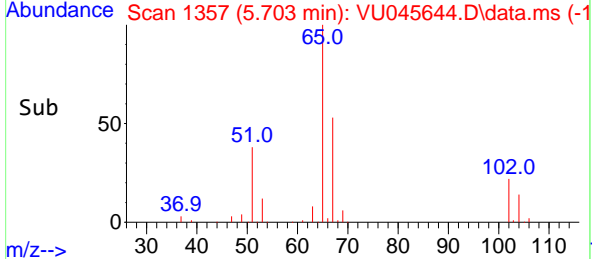
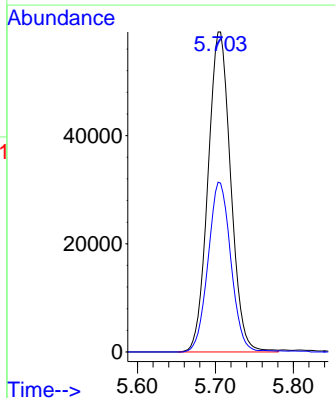
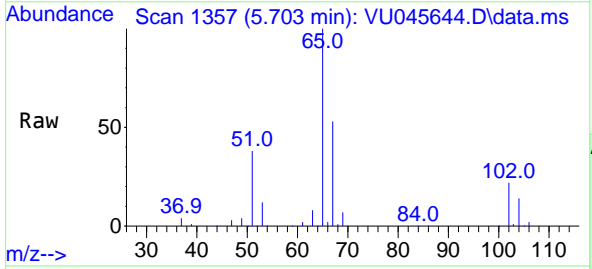
Ion	Ratio	Lower	Upper
56	100		
69	184.3	26.4	39.6#
84	156.7	68.4	102.6#

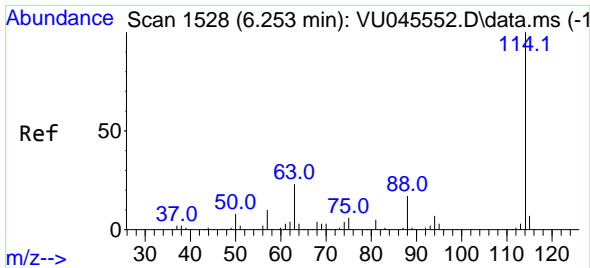


#33
 1,2-Dichloroethane-d4
 Concen: 54.320 ug/l
 RT: 5.703 min Scan# 1357
 Delta R.T. 0.000 min
 Lab File: VU045644.D
 Acq: 09 Nov 2021 03:03

Tgt Ion: 65 Resp: 119883

Ion	Ratio	Lower	Upper
65	100		
67	53.2	0.0	105.8



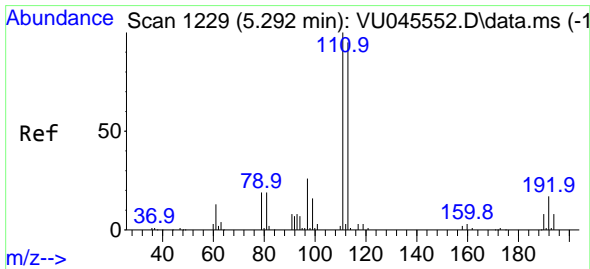
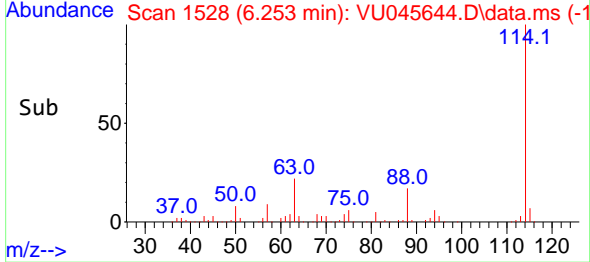
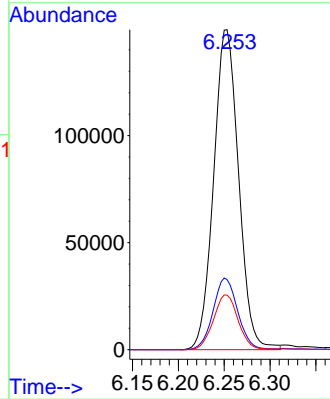
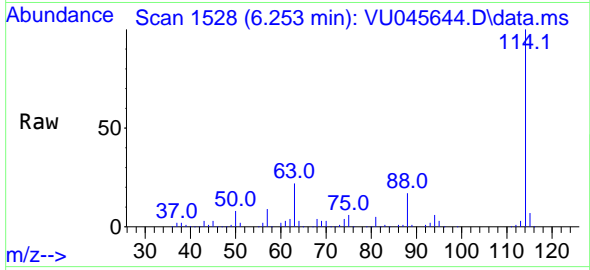


#34
 1,4-Difluorobenzene
 Concen: 50.000 ug/l
 RT: 6.253 min Scan# 11
 Delta R.T. 0.000 min
 Lab File: VU045644.D
 Acq: 09 Nov 2021 03:03

Instrument : MSVOA_U
 ClientSampleId : PB140545TB

Tgt Ion:114 Resp: 282713

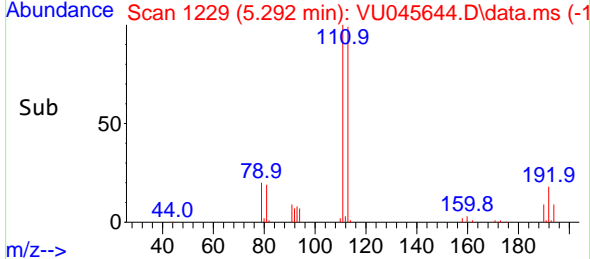
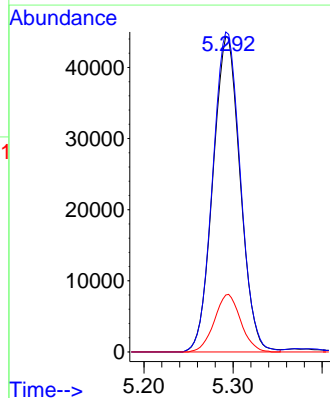
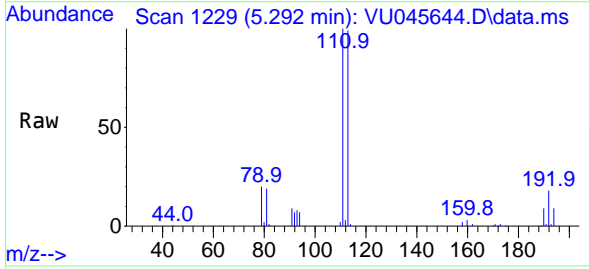
Ion	Ratio	Lower	Upper
114	100		
63	21.9	0.0	45.6
88	17.0	0.0	33.8

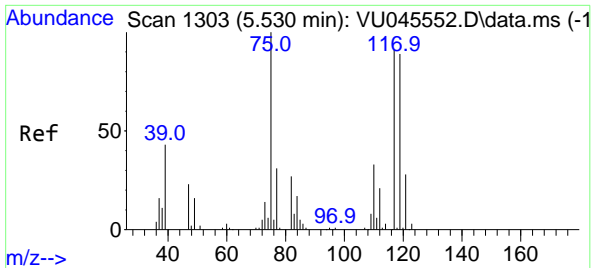


#35
 Dibromofluoromethane
 Concen: 49.951 ug/l
 RT: 5.292 min Scan# 1229
 Delta R.T. 0.000 min
 Lab File: VU045644.D
 Acq: 09 Nov 2021 03:03

Tgt Ion:113 Resp: 94284

Ion	Ratio	Lower	Upper
113	100		
111	102.5	82.8	124.2
192	17.6	14.8	22.2



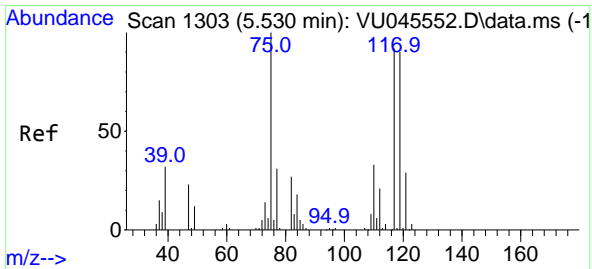
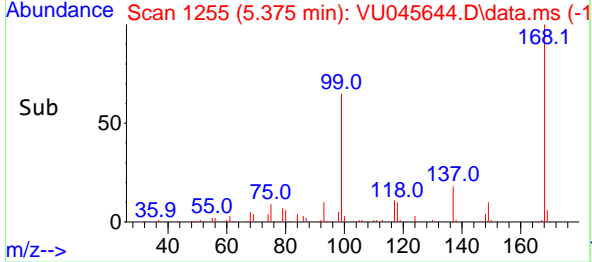
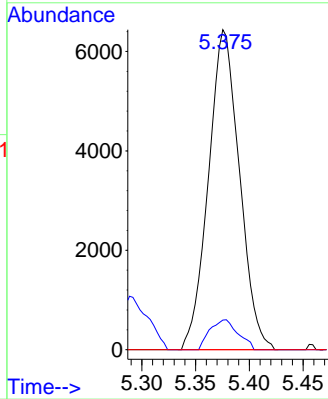
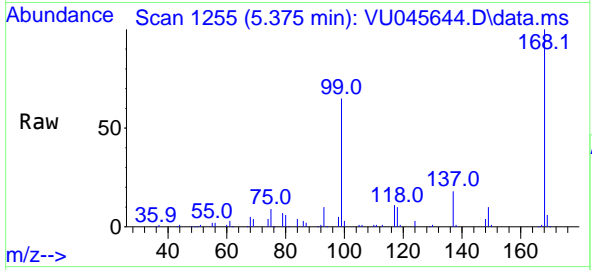


#36
 1,1-Dichloropropene
 Concen: 4.696 ug/l
 RT: 5.375 min Scan# 11
 Delta R.T. -0.154 min
 Lab File: VU045644.D
 Acq: 09 Nov 2021 03:03

Instrument : MSVOA_U
 Client Sample Id : PB140545TB

Tgt Ion: 75 Resp: 12945

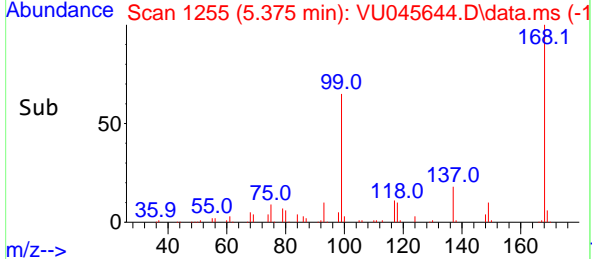
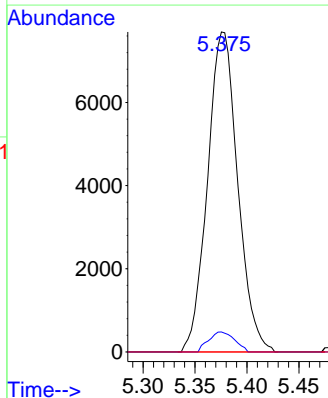
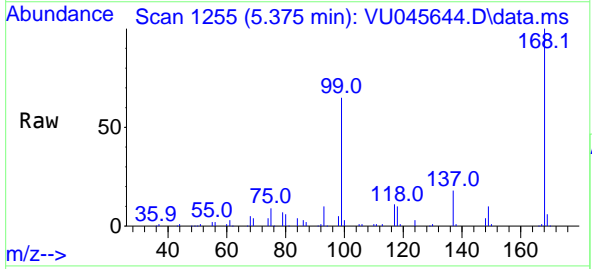
Ion	Ratio	Lower	Upper
75	100		
110	8.5	16.7	50.0#
77	0.0	25.0	37.4#

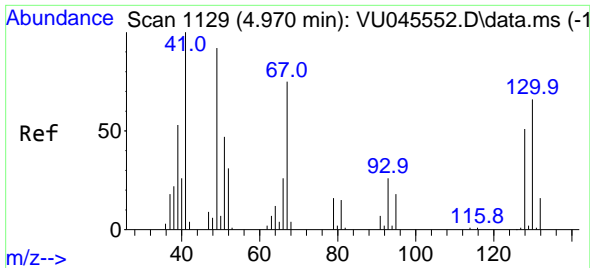


#38
 Carbon Tetrachloride
 Concen: 5.606 ug/l
 RT: 5.375 min Scan# 1255
 Delta R.T. -0.154 min
 Lab File: VU045644.D
 Acq: 09 Nov 2021 03:03

Tgt Ion: 117 Resp: 15579

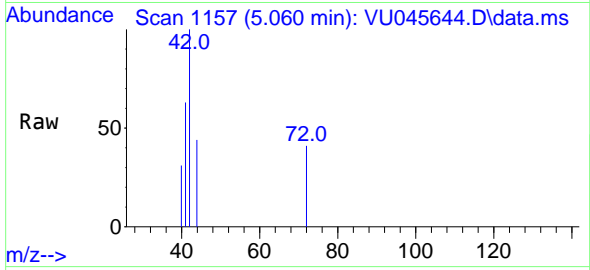
Ion	Ratio	Lower	Upper
117	100		
119	6.3	77.4	116.0#
121	0.0	24.8	37.2#





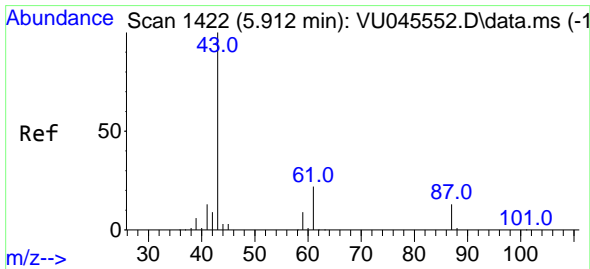
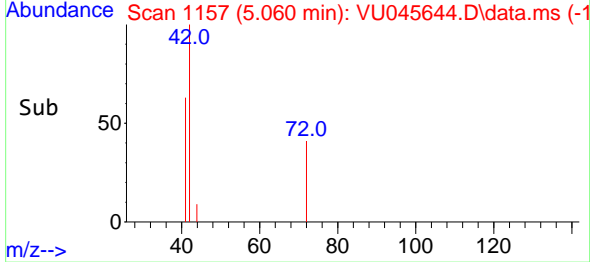
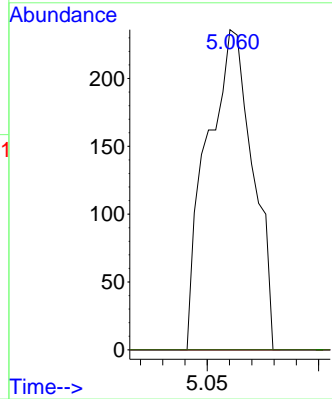
#41
 Methacrylonitrile
 Concen: 0.202 ug/l
 RT: 5.060 min Scan# 1129
 Delta R.T. 0.090 min
 Lab File: VU045644.D
 Acq: 09 Nov 2021 03:03

Instrument : MSVOA_U
 ClientSampleId : PB140545TB

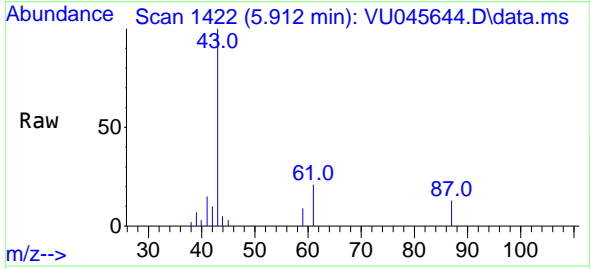


Tgt Ion: 41 Resp: 338

Ion	Ratio	Lower	Upper
41	100		
39	0.0	43.4	65.0#
67	0.0	61.0	91.4#
52	0.0	23.4	35.0#

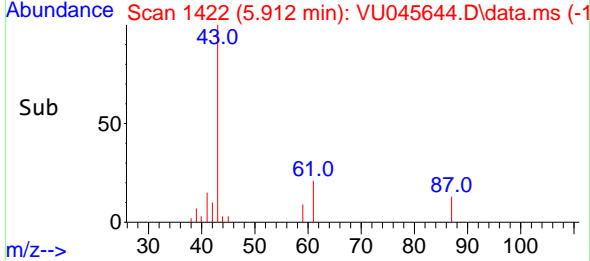
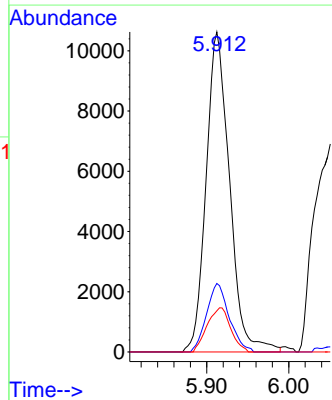


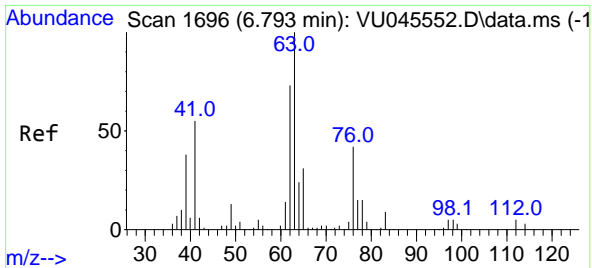
#43
 Isopropyl Acetate
 Concen: 4.360 ug/l
 RT: 5.912 min Scan# 1422
 Delta R.T. 0.000 min
 Lab File: VU045644.D
 Acq: 09 Nov 2021 03:03



Tgt Ion: 43 Resp: 21118

Ion	Ratio	Lower	Upper
43	100		
61	20.6	16.9	25.3
87	13.8	11.0	16.4

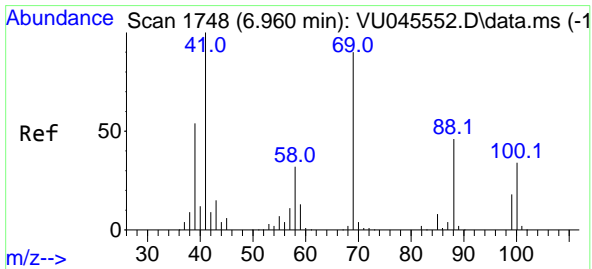
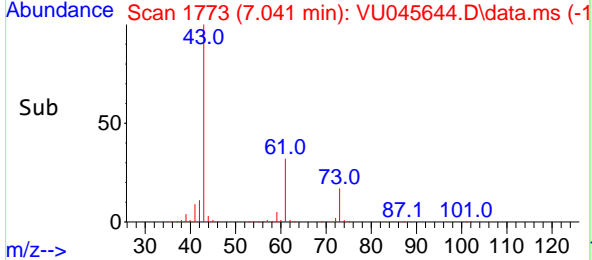
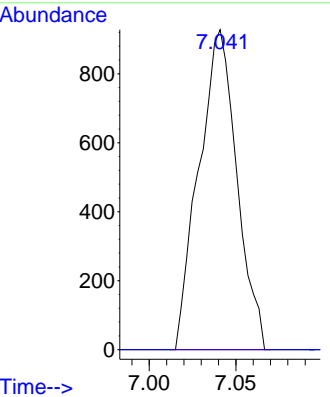
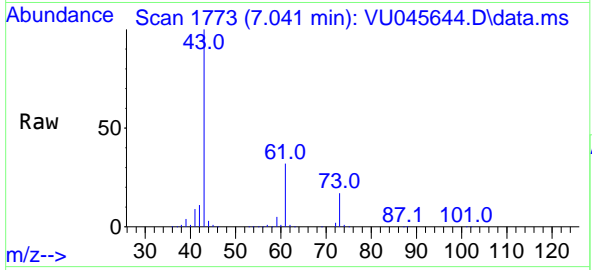




#45
 1,2-Dichloropropane
 Concen: 0.654 ug/l
 RT: 7.041 min Scan# 11
 Delta R.T. 0.248 min
 Lab File: VU045644.D
 Acq: 09 Nov 2021 03:03

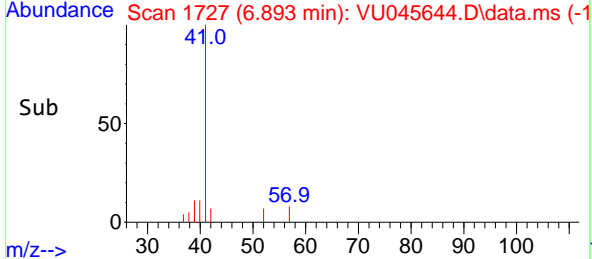
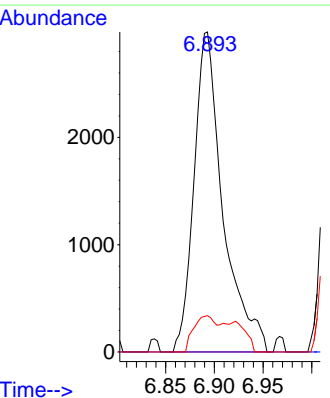
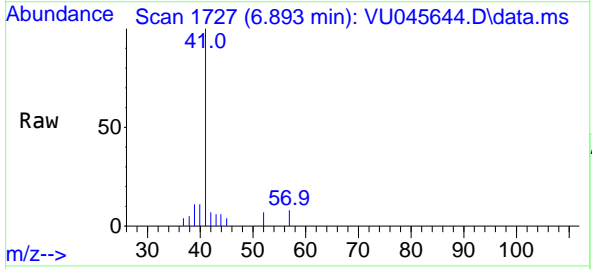
Instrument : MSVOA_U
 ClientSampleId : PB140545TB

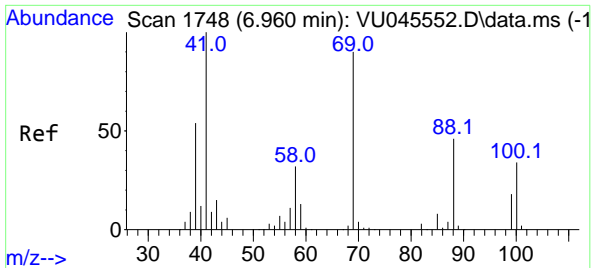
Tgt Ion: 63 Resp: 1413
 Ion Ratio Lower Upper
 63 100
 65 0.0 25.7 38.5#



#48
 Methyl methacrylate
 Concen: 2.764 ug/l
 RT: 6.893 min Scan# 1727
 Delta R.T. -0.067 min
 Lab File: VU045644.D
 Acq: 09 Nov 2021 03:03

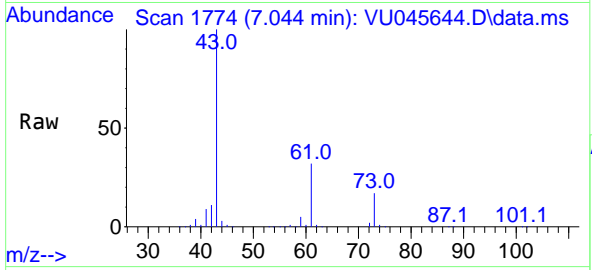
Tgt Ion: 41 Resp: 6162
 Ion Ratio Lower Upper
 41 100
 69 0.0 70.2 105.2#
 39 0.0 43.9 65.9#



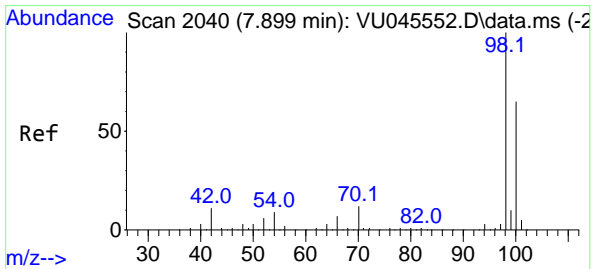
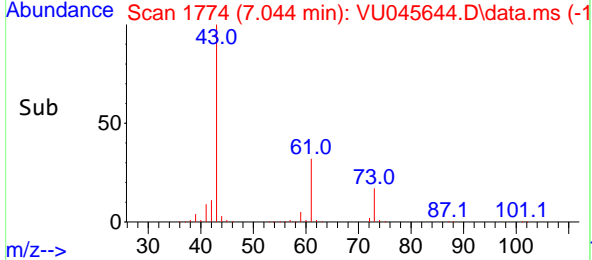
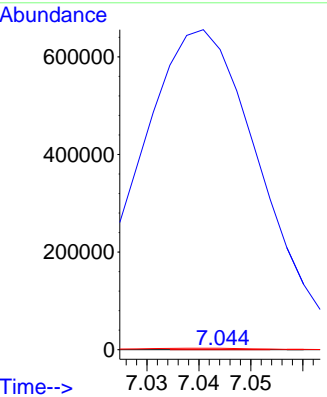


#49
 1,4-Dioxane
 Concen: 1.169 ug/l
 RT: 7.044 min Scan# 11
 Delta R.T. 0.084 min
 Lab File: VU045644.D
 Acq: 09 Nov 2021 03:03

Instrument : MSVOA_U
 ClientSampleId : PB140545TB

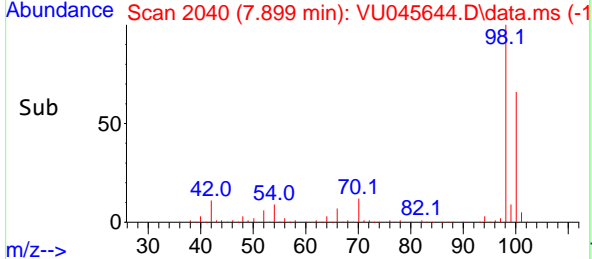
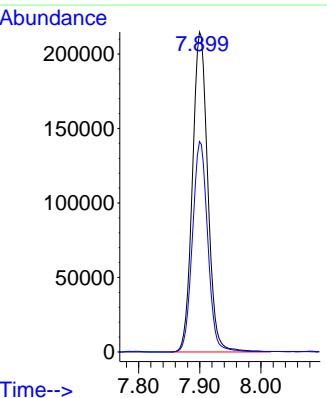
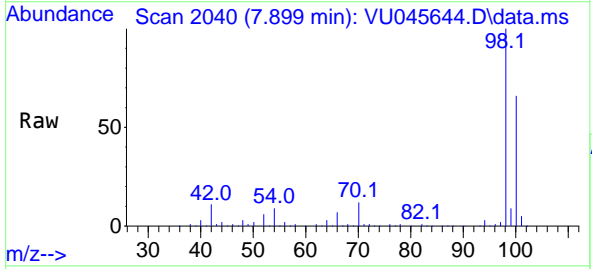


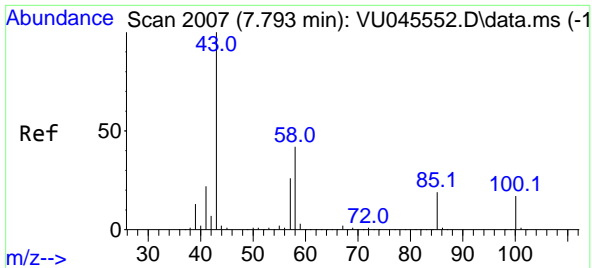
Tgt Ion: 88 Resp: 67
 Ion Ratio Lower Upper
 88 100
 43 1700519.4 0.0 0.0#
 58 7749.3 58.7 88.1#



#50
 Toluene-d8
 Concen: 53.291 ug/l
 RT: 7.899 min Scan# 2040
 Delta R.T. 0.000 min
 Lab File: VU045644.D
 Acq: 09 Nov 2021 03:03

Tgt Ion: 98 Resp: 374037
 Ion Ratio Lower Upper
 98 100
 100 65.7 52.5 78.7

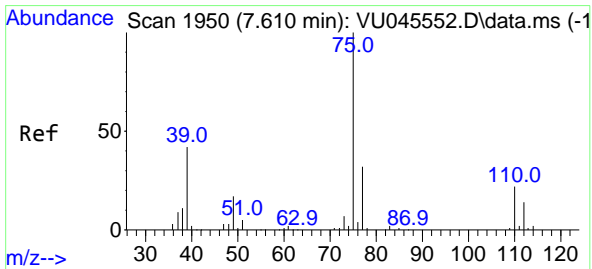
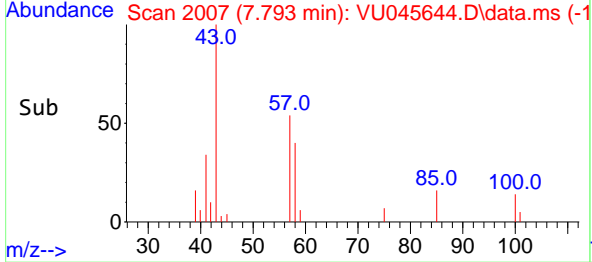
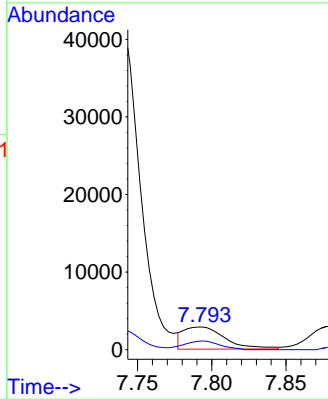
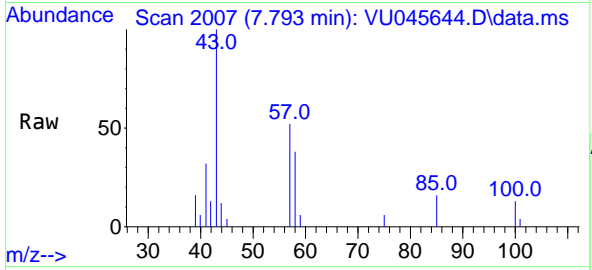




#51
 4-Methyl-2-Pentanone
 Concen: 1.734 ug/l
 RT: 7.793 min Scan# 2007
 Delta R.T. 0.000 min
 Lab File: VU045644.D
 Acq: 09 Nov 2021 03:03

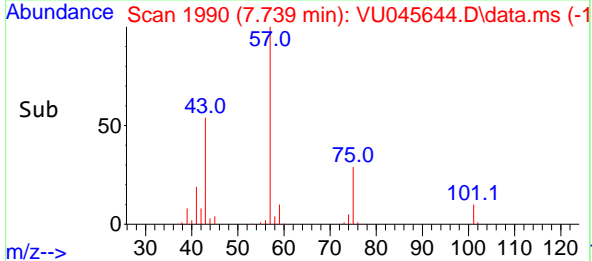
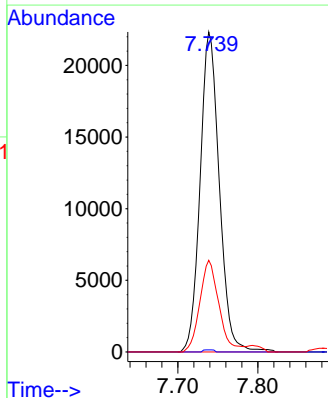
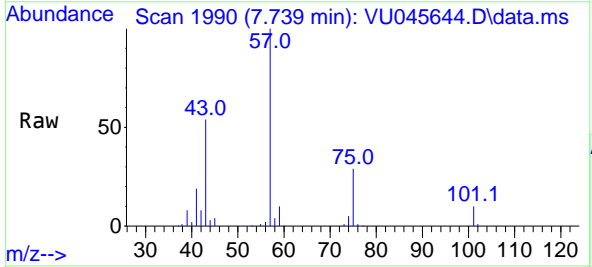
Instrument : MSVOA_U
 ClientSampleId : PB140545TB

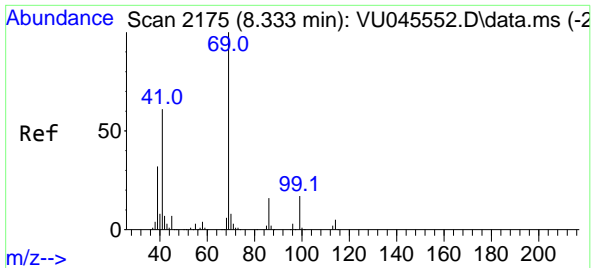
Tgt Ion: 43 Resp: 5539
 Ion Ratio Lower Upper
 43 100
 58 34.0 33.8 50.8



#54
 cis-1,3-Dichloropropene
 Concen: 10.780 ug/l
 RT: 7.739 min Scan# 1990
 Delta R.T. 0.129 min
 Lab File: VU045644.D
 Acq: 09 Nov 2021 03:03

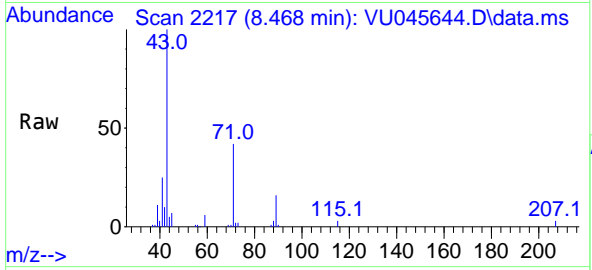
Tgt Ion: 75 Resp: 37362
 Ion Ratio Lower Upper
 75 100
 77 0.7 24.6 37.0#
 39 28.6 37.1 55.7#



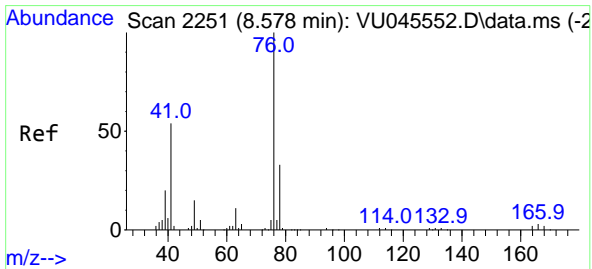
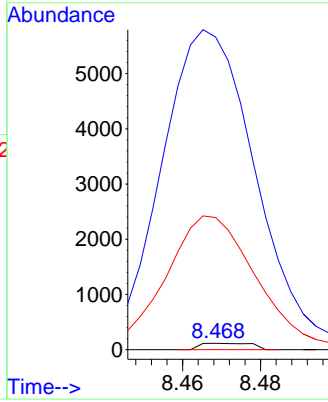
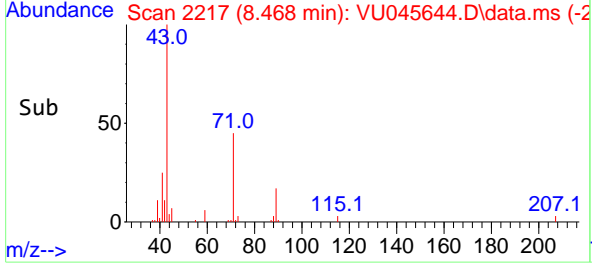


#56
 Ethyl methacrylate
 Concen: 2.451 ug/l
 RT: 8.468 min Scan# 2175
 Delta R.T. 0.135 min
 Lab File: VU045644.D
 Acq: 09 Nov 2021 03:03

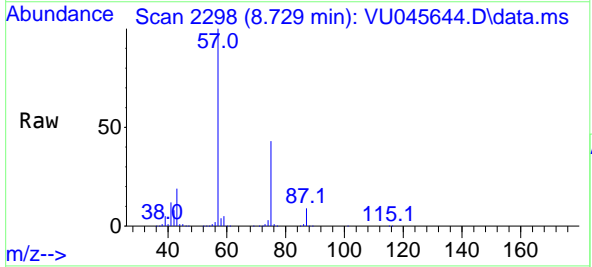
Instrument : MSVOA_U
 ClientSampleId : PB140545TB



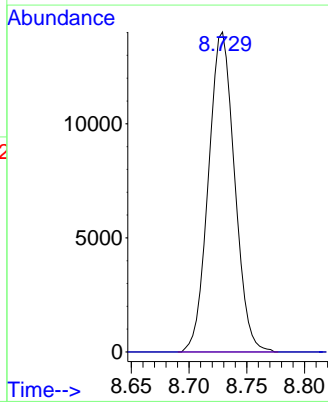
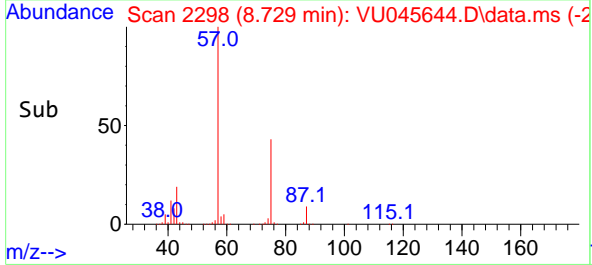
Tgt Ion: 69 Resp: 107
 Ion Ratio Lower Upper
 69 100
 41 9286.9 51.0 76.4#
 39 3658.9 26.6 39.8#

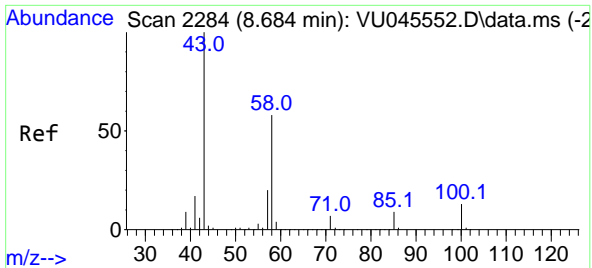


#57
 1,3-Dichloropropane
 Concen: 5.916 ug/l
 RT: 8.729 min Scan# 2298
 Delta R.T. 0.151 min
 Lab File: VU045644.D
 Acq: 09 Nov 2021 03:03



Tgt Ion: 76 Resp: 22064
 Ion Ratio Lower Upper
 76 100
 78 0.0 25.8 38.8#

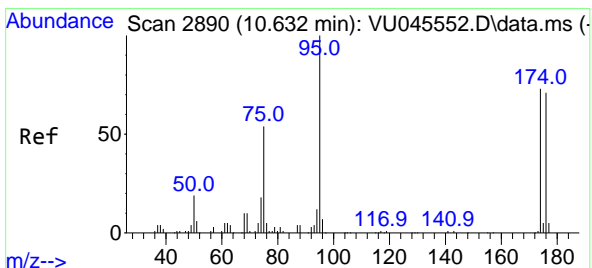
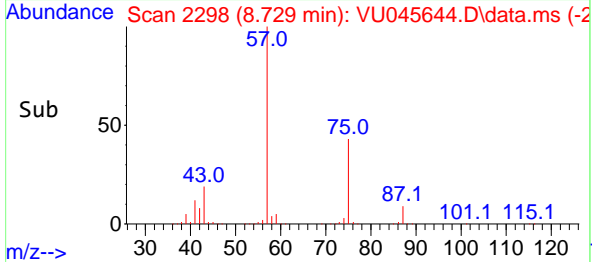
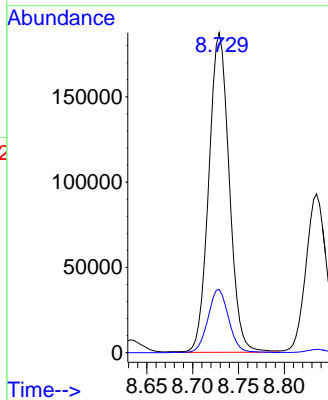
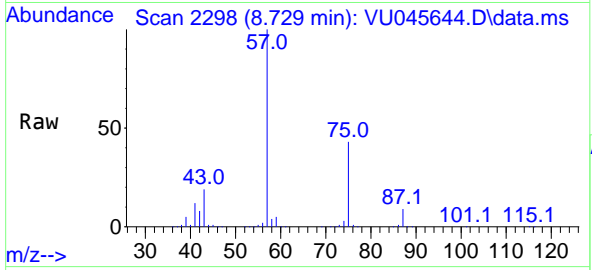




#59
 2-Hexanone
 Concen: 108.721 ug/l
 RT: 8.729 min Scan# 21
 Delta R.T. 0.045 min
 Lab File: VU045644.D
 Acq: 09 Nov 2021 03:03

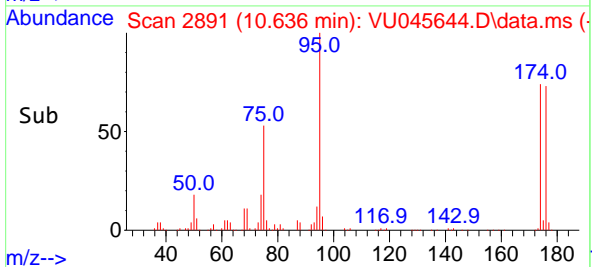
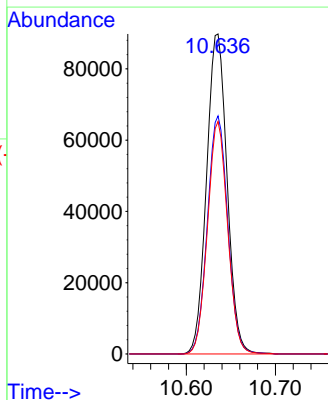
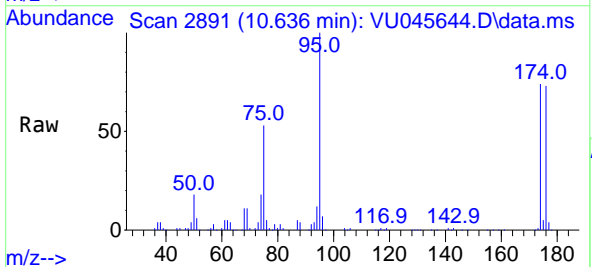
Instrument : MSVOA_U
 ClientSampleId : PB140545TB

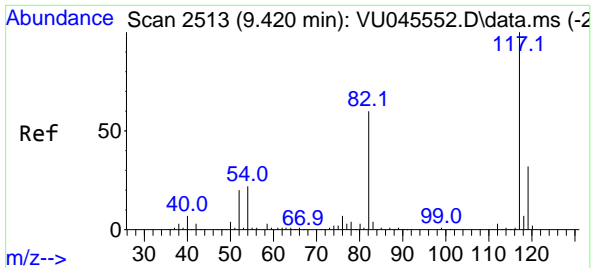
Tgt Ion: 43 Resp: 290048
 Ion Ratio Lower Upper
 43 100
 58 20.2 29.5 88.6#



#62
 4-Bromofluorobenzene
 Concen: 51.084 ug/l
 RT: 10.636 min Scan# 2891
 Delta R.T. 0.003 min
 Lab File: VU045644.D
 Acq: 09 Nov 2021 03:03

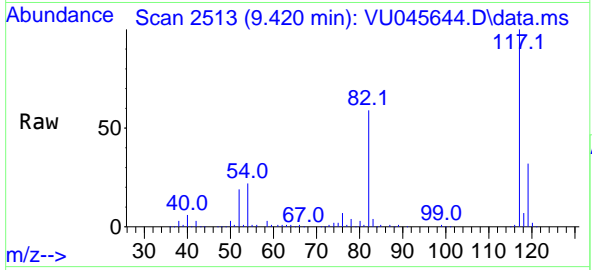
Tgt Ion: 95 Resp: 143774
 Ion Ratio Lower Upper
 95 100
 174 73.9 0.0 141.8
 176 71.1 0.0 138.2



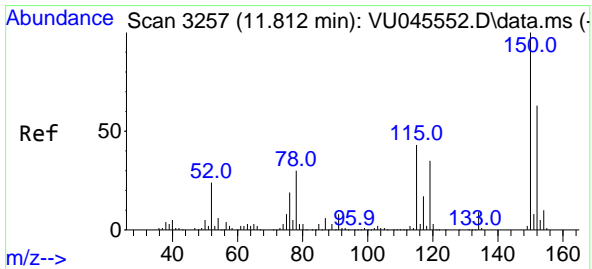
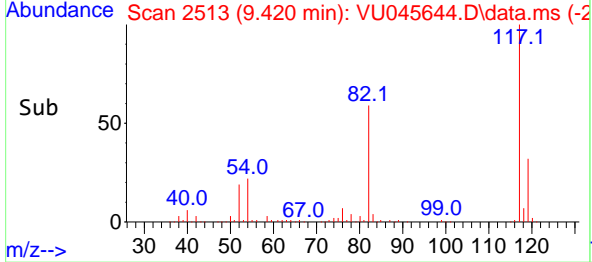
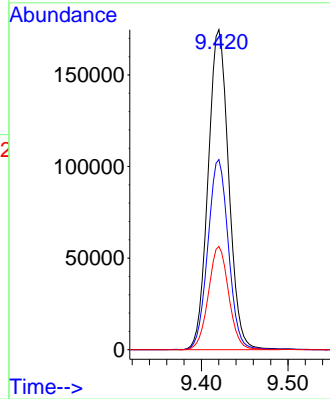


#63
 Chlorobenzene-d5
 Concen: 50.000 ug/l
 RT: 9.420 min Scan# 2513
 Delta R.T. 0.000 min
 Lab File: VU045644.D
 Acq: 09 Nov 2021 03:03

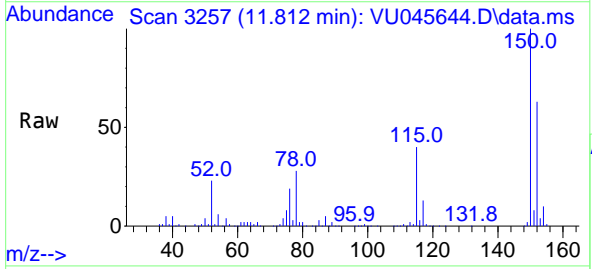
Instrument : MSVOA_U
 ClientSampleId : PB140545TB



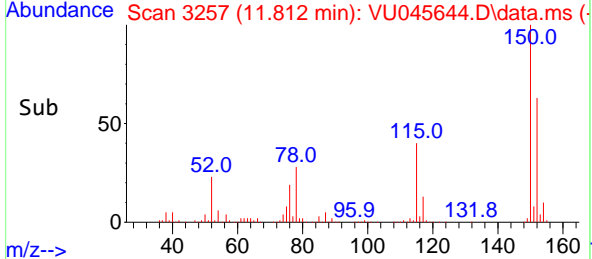
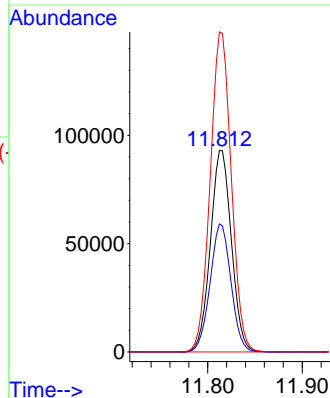
Tgt Ion:117 Resp: 288865
 Ion Ratio Lower Upper
 117 100
 82 59.3 47.8 71.8
 119 32.3 25.8 38.8

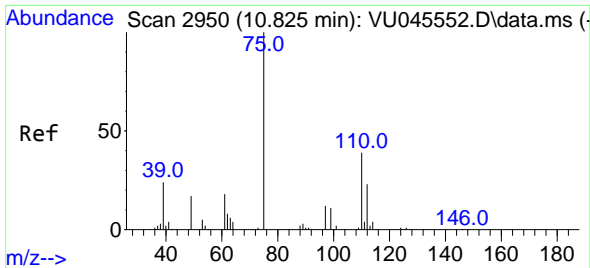


#72
 1,4-Dichlorobenzene-d4
 Concen: 50.000 ug/l
 RT: 11.812 min Scan# 3257
 Delta R.T. 0.000 min
 Lab File: VU045644.D
 Acq: 09 Nov 2021 03:03



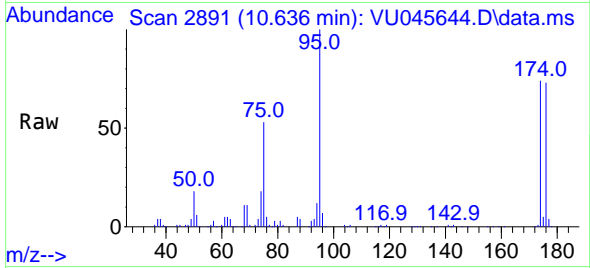
Tgt Ion:152 Resp: 143674
 Ion Ratio Lower Upper
 152 100
 115 63.0 42.7 128.1
 150 159.2 0.0 346.8



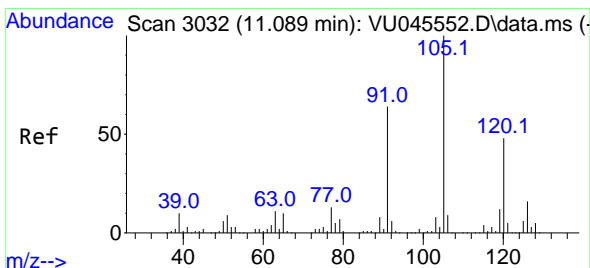
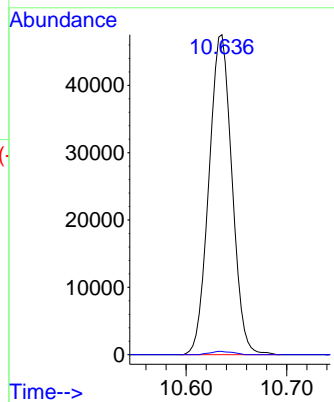
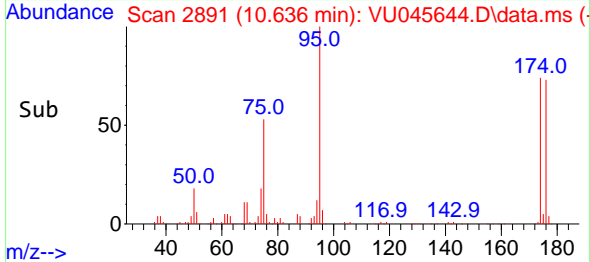


#76
 1,2,3-Trichloropropane
 Concen: 17.380 ug/l
 RT: 10.636 min Scan# 21
 Delta R.T. -0.190 min
 Lab File: VU045644.D
 Acq: 09 Nov 2021 03:03

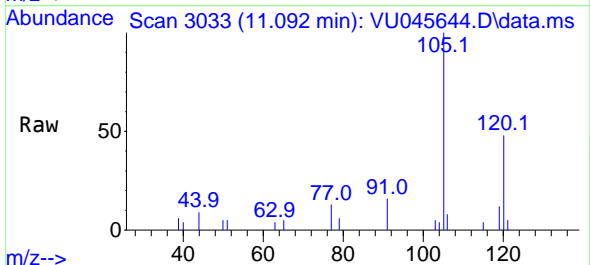
Instrument : MSVOA_U
 ClientSampleId : PB140545TB



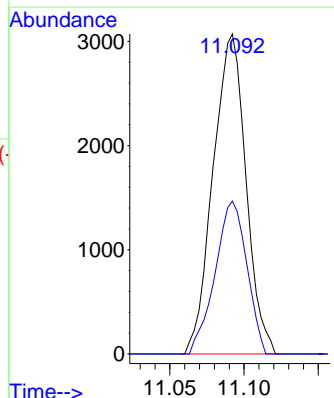
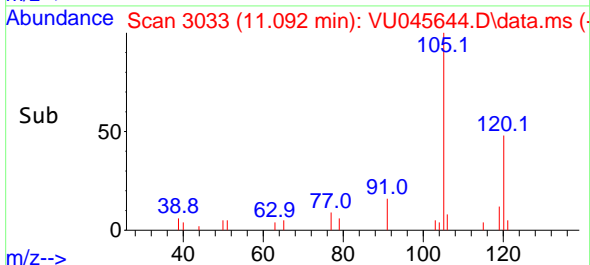
Tgt Ion: 75 Resp: 75724
 Ion Ratio Lower Upper
 75 100
 77 1.0 17.1 51.3#

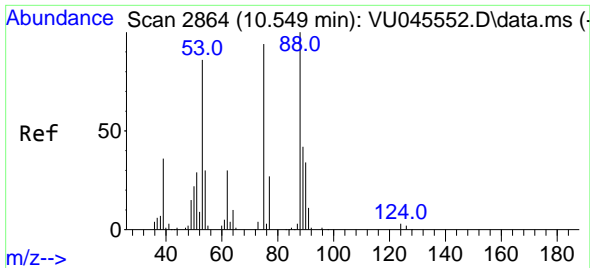


#80
 1,3,5-Trimethylbenzene
 Concen: 0.577 ug/l
 RT: 11.092 min Scan# 3033
 Delta R.T. 0.003 min
 Lab File: VU045644.D
 Acq: 09 Nov 2021 03:03



Tgt Ion: 105 Resp: 4729
 Ion Ratio Lower Upper
 105 100
 120 46.1 23.9 71.8

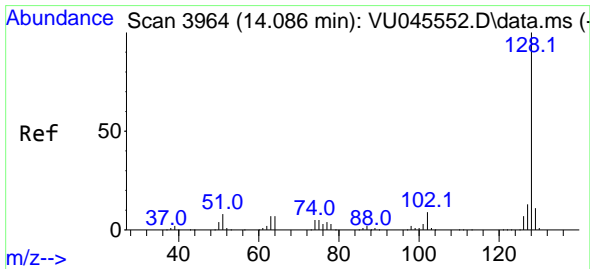
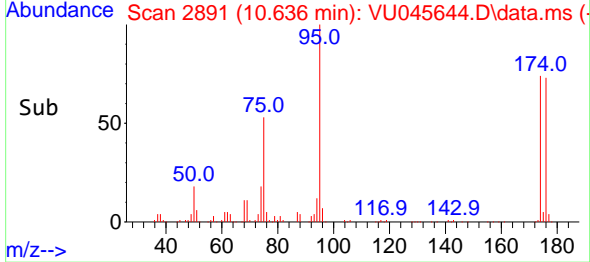
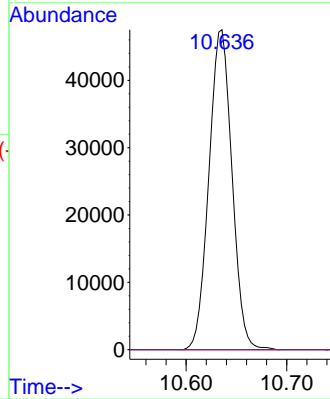
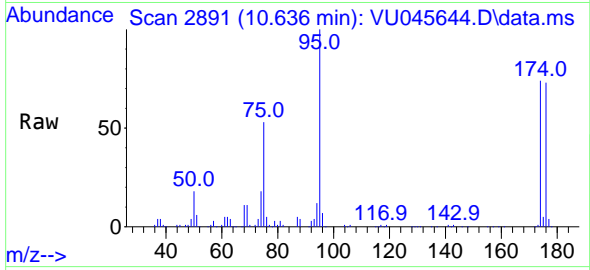




#81
 trans-1,4-Dichloro-2-butene
 Concen: 56.520 ug/l
 RT: 10.636 min Scan# 21
 Delta R.T. 0.087 min
 Lab File: VU045644.D
 Acq: 09 Nov 2021 03:03

Instrument :
 MSVOA_U
 ClientSampleId :
 PB140545TB

Tgt Ion: 75 Resp: 75724
 Ion Ratio Lower Upper
 75 100
 53 0.0 76.2 114.4#
 89 0.0 34.0 51.0#



#95
 Naphthalene
 Concen: 1.064 ug/l
 RT: 14.089 min Scan# 3965
 Delta R.T. 0.003 min
 Lab File: VU045644.D
 Acq: 09 Nov 2021 03:03

Tgt Ion:128 Resp: 412
 Ion Ratio Lower Upper
 128 100
 127 0.0 10.6 15.8#
 129 0.0 8.6 13.0#

