

Data Path : Z:\voasrv\HPCHEM1\MSVOA_U\Data\VU111123\
 Data File : VU056208.D
 Acq On : 11 Nov 2023 11:36
 Operator : MD/SY
 Sample : 05340-02RE
 Misc : 25.0mL/MSVOA_U/WATER
 ALS Vial : 1 Sample Multiplier: 1

Instrument :
 MSVOA_U
 ClientSampleId :

Quant Time: Nov 11 20:20:23 2023
 Quant Method : Z:\voasrv\HPCHEM1\MSVOA_U\Method\SFAMUTR110723WMA.M
 Quant Title : TRACE VOA SFAM1.0
 QLast Update : Sat Nov 11 20:19:10 2023
 Response via : Initial Calibration

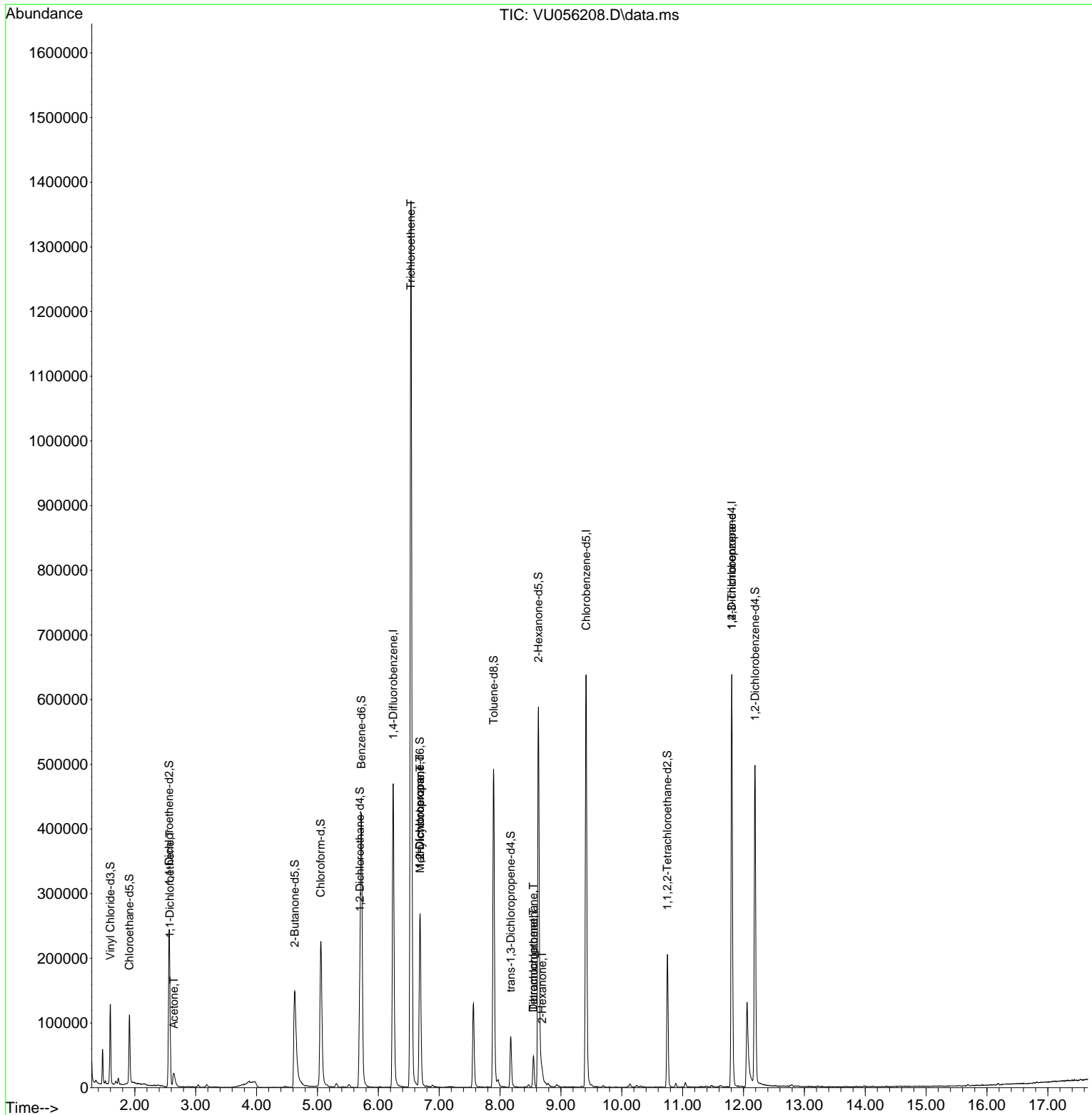
Compound	R.T.	QIon	Response	Conc	Units	Dev(Min)
Internal Standards						
1) 1,4-Difluorobenzene	6.245	114	397570	5.000	ug/L	0.00
28) Chlorobenzene-d5	9.415	117	392495	5.000	ug/L	0.00
58) 1,4-Dichlorobenzene-d4	11.807	152	177404	5.000	ug/L	0.00
System Monitoring Compounds						
4) Vinyl Chloride-d3	1.599	65	88755	3.597	ug/L	0.00
Spiked Amount	5.000	Range 40 - 130	Recovery	=	72.000%	
7) Chloroethane-d5	1.911	69	77811	4.646	ug/L	0.00
Spiked Amount	5.000	Range 65 - 130	Recovery	=	93.000%	
11) 1,1-Dichloroethene-d2	2.563	65	42554	3.914	ug/L	0.00
Spiked Amount	5.000	Range 60 - 125	Recovery	=	78.200%	
20) 2-Butanone-d5	4.628	46	257991	63.726	ug/L	0.00
Spiked Amount	50.000	Range 40 - 130	Recovery	=	127.460%	
24) Chloroform-d	5.055	84	219089	4.664	ug/L	0.00
Spiked Amount	5.000	Range 70 - 125	Recovery	=	93.200%	
26) 1,2-Dichloroethane-d4	5.698	65	103177	4.988	ug/L	0.00
Spiked Amount	5.000	Range 70 - 130	Recovery	=	99.800%	
32) Benzene-d6	5.721	84	422745	4.485	ug/L	0.00
Spiked Amount	5.000	Range 70 - 125	Recovery	=	89.600%	
36) 1,2-Dichloropropane-d6	6.685	67	136806	4.930	ug/L	0.00
Spiked Amount	5.000	Range 60 - 140	Recovery	=	98.600%	
41) Toluene-d8	7.894	98	357028	4.133	ug/L	0.00
Spiked Amount	5.000	Range 70 - 130	Recovery	=	82.600%	
43) trans-1,3-Dichloroprop...	8.177	79	49061	4.625	ug/L	0.00
Spiked Amount	5.000	Range 55 - 130	Recovery	=	92.600%	
46) 2-Hexanone-d5	8.631	63	217261	62.493	ug/L	0.00
Spiked Amount	50.000	Range 45 - 130	Recovery	=	124.980%	
56) 1,1,2,2-Tetrachloroeth...	10.749	84	102922	5.197	ug/L	0.00
Spiked Amount	5.000	Range 65 - 120	Recovery	=	104.000%	
66) 1,2-Dichlorobenzene-d4	12.190	152	138019	5.045	ug/L	0.00
Spiked Amount	5.000	Range 80 - 120	Recovery	=	100.800%	
Target Compounds						
12) 1,1-Dichloroethene	2.576	96	17222	0.674	ug/L #	1
13) Acetone	2.644	43	37925	12.702	ug/L	98
34) Trichloroethene	6.537	95	493766	16.085	ug/L	98
35) Methylcyclohexane	6.689	83	32710	0.717	ug/L #	20
37) 1,2-Dichloropropane	6.685	63	13647	0.467	ug/L #	90
47) Tetrachloroethene	8.550	164	10181	0.442	ug/L	86
48) 2-Hexanone	8.692	43	11163	1.199	ug/L #	86
49) Dibromochloromethane	8.547	129	10856	0.474	ug/L #	10
61) 1,2,3-Trichloropropane	11.807	75	19545	1.276	ug/L #	66

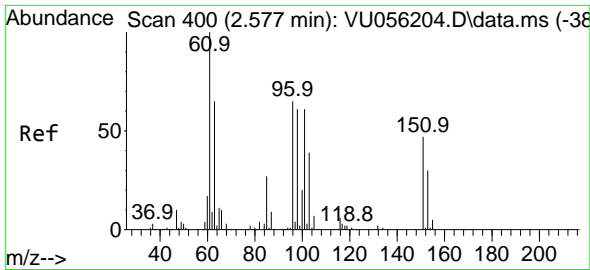
(#) = qualifier out of range (m) = manual integration (+) = signals summed

Data Path : Z:\voasrv\HPCHEM1\MSVOA_U\Data\VU111123\
 Data File : VU056208.D
 Acq On : 11 Nov 2023 11:36
 Operator : MD/SY
 Sample : 05340-02RE
 Misc : 25.0mL/MSVOA_U/WATER
 ALS Vial : 1 Sample Multiplier: 1

Instrument :
 MSVOA_U
 ClientSampleId :

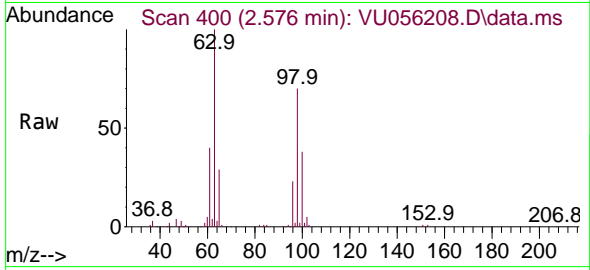
Quant Time: Nov 11 20:20:23 2023
 Quant Method : Z:\voasrv\HPCHEM1\MSVOA_U\Method\SFAMUTR110723WMA.M
 Quant Title : TRACE VOA SFAM1.0
 QLast Update : Sat Nov 11 20:19:10 2023
 Response via : Initial Calibration



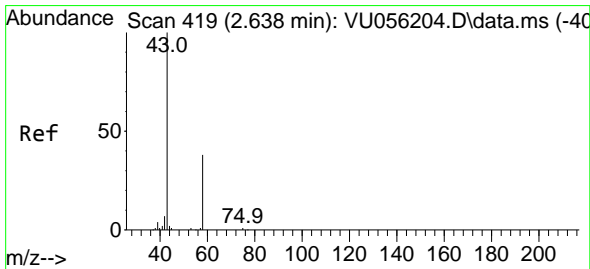
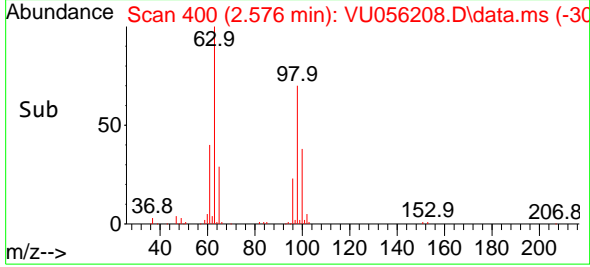
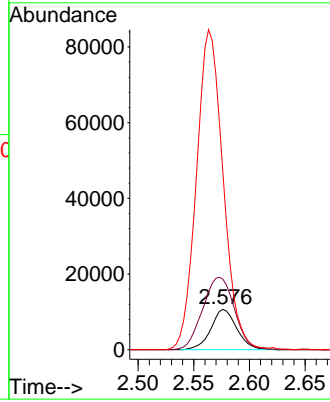


#12
 1,1-Dichloroethene
 Concen: 0.674 ug/L
 RT: 2.576 min Scan# 400
 Delta R.T. -0.000 min
 Lab File: VU056208.D
 Acq: 11 Nov 2023 11:36

Instrument :
 MSVOA_U
 ClientSampleId :

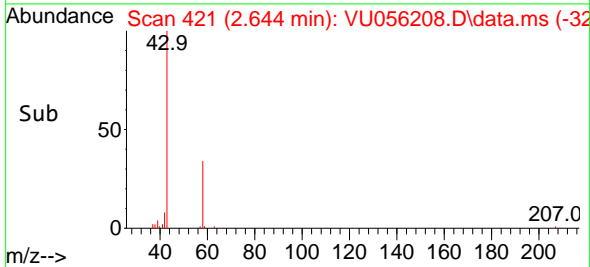
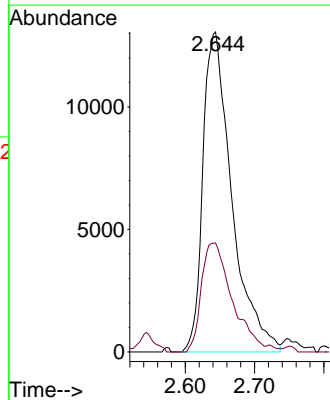
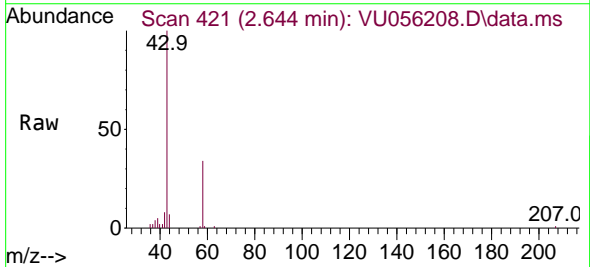


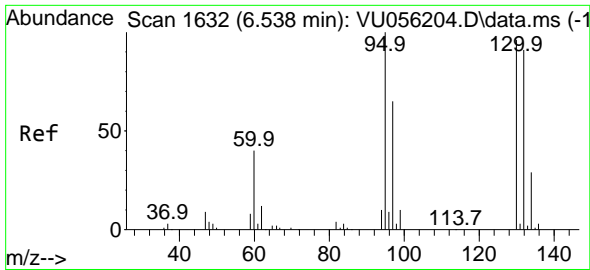
Tgt Ion: 96 Resp: 17222
 Ion Ratio Lower Upper
 96 100
 61 174.6 111.7 207.5
 63 438.6 74.5 138.3#



#13
 Acetone
 Concen: 12.702 ug/L
 RT: 2.644 min Scan# 421
 Delta R.T. 0.006 min
 Lab File: VU056208.D
 Acq: 11 Nov 2023 11:36

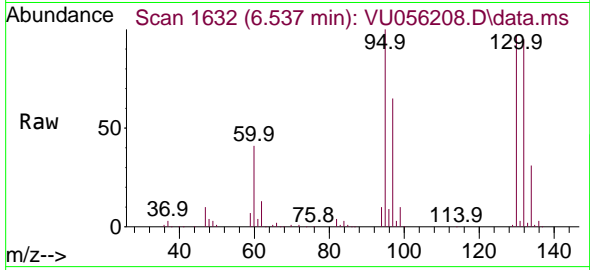
Tgt Ion: 43 Resp: 37925
 Ion Ratio Lower Upper
 43 100
 58 36.1 0.0 74.4





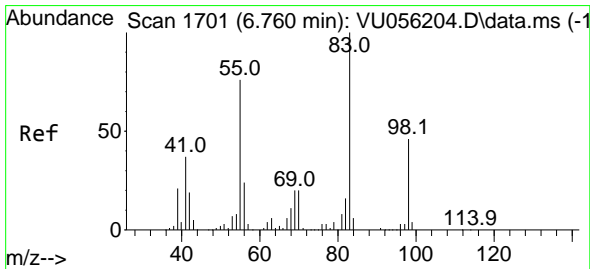
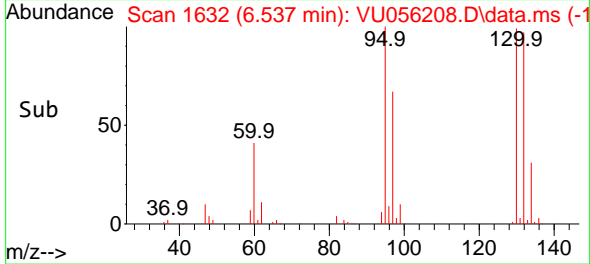
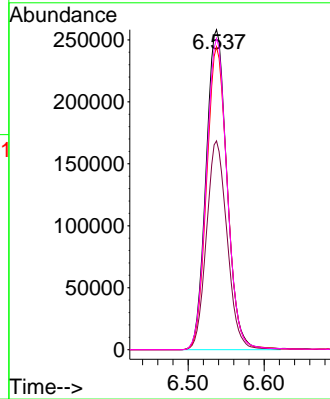
#34
 Trichloroethene
 Concen: 16.085 ug/L
 RT: 6.537 min Scan# 1632
 Delta R.T. -0.000 min
 Lab File: VU056208.D
 Acq: 11 Nov 2023 11:36

Instrument : MSVOA_U
 ClientSampleId :



Tgt Ion: 95 Resp: 493766

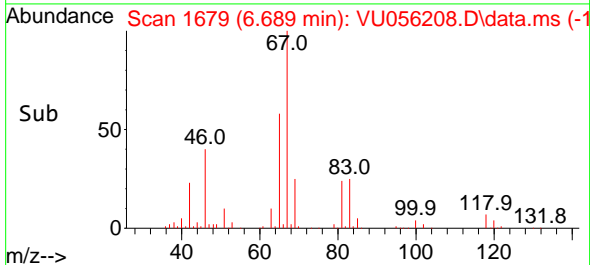
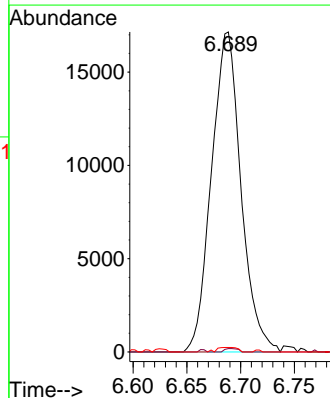
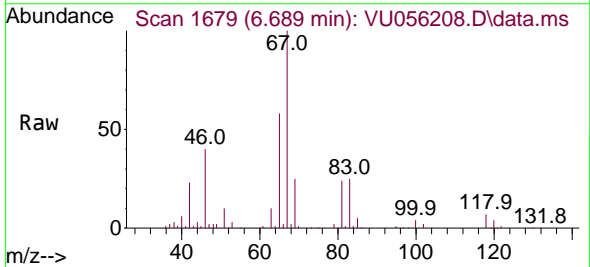
Ion	Ratio	Lower	Upper
95	100		
97	65.2	46.8	87.0
132	94.6	66.5	123.5
130	97.3	70.6	131.0

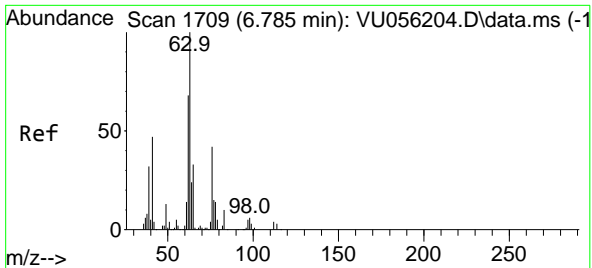


#35
 Methylcyclohexane
 Concen: 0.717 ug/L
 RT: 6.689 min Scan# 1679
 Delta R.T. -0.071 min
 Lab File: VU056208.D
 Acq: 11 Nov 2023 11:36

Tgt Ion: 83 Resp: 32710

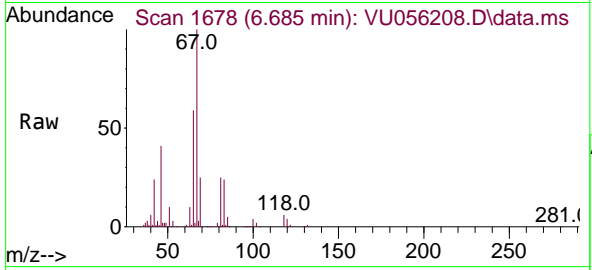
Ion	Ratio	Lower	Upper
83	100		
55	0.5	60.6	91.0#
98	1.0	36.2	54.4#



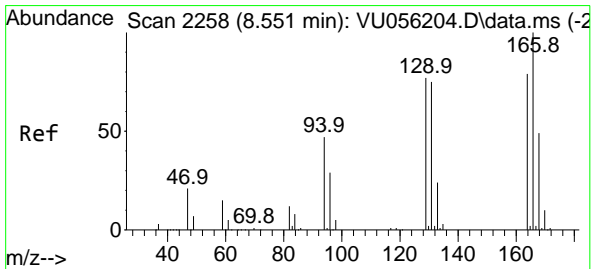
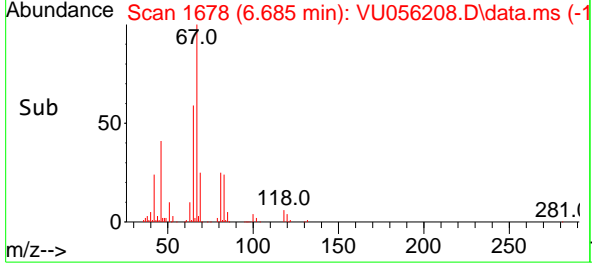
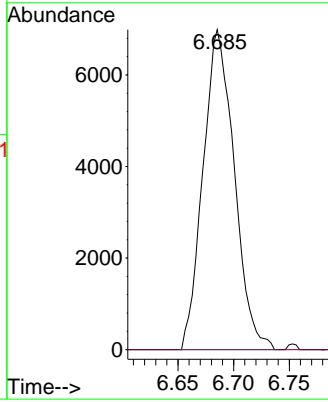


#37
 1,2-Dichloropropane
 Concen: 0.467 ug/L
 RT: 6.685 min Scan# 1
 Delta R.T. -0.100 min
 Lab File: VU056208.D
 Acq: 11 Nov 2023 11:36

Instrument : MSVOA_U
 ClientSampled :

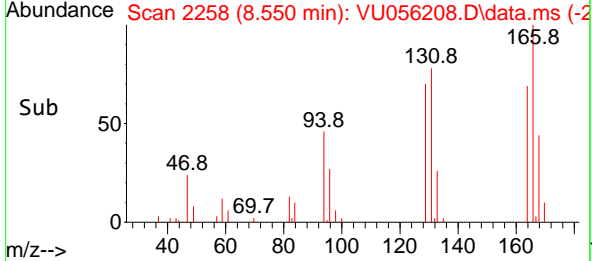
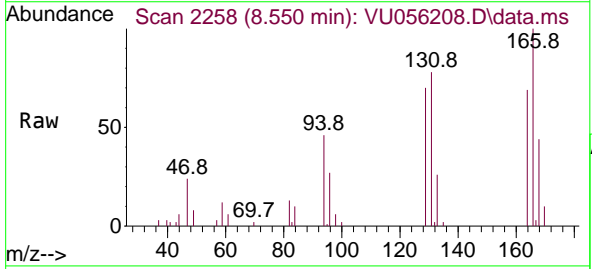
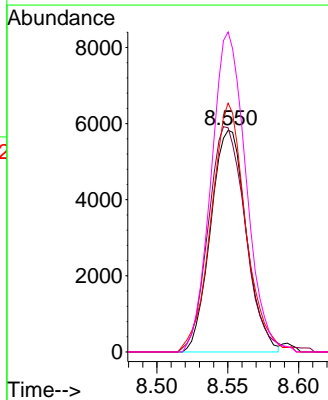


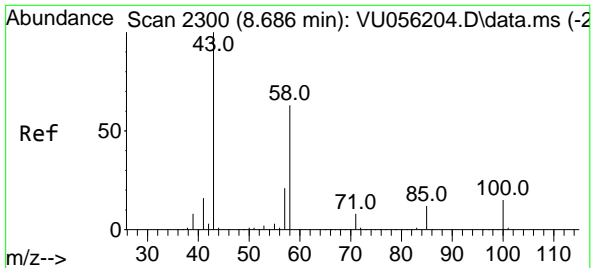
Tgt Ion: 63 Resp: 13647
 Ion Ratio Lower Upper
 63 100
 112 1.0 3.4 5.2#



#47
 Tetrachloroethene
 Concen: 0.442 ug/L
 RT: 8.550 min Scan# 2258
 Delta R.T. -0.000 min
 Lab File: VU056208.D
 Acq: 11 Nov 2023 11:36

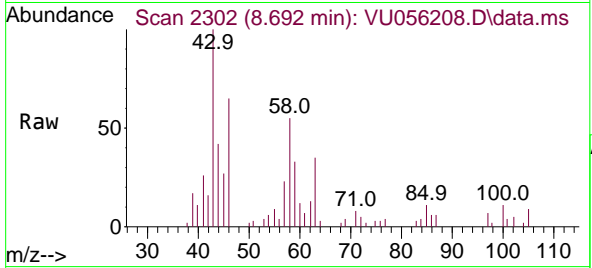
Tgt Ion: 164 Resp: 10181
 Ion Ratio Lower Upper
 164 100
 129 101.1 66.6 123.8
 131 112.3 67.8 126.0
 166 144.4 85.9 159.5



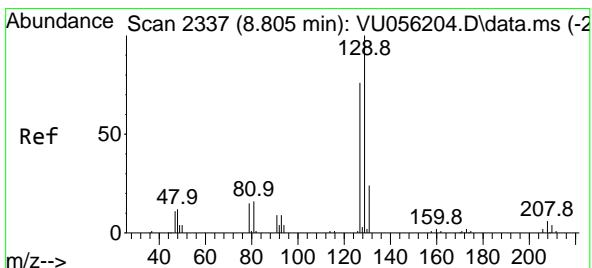
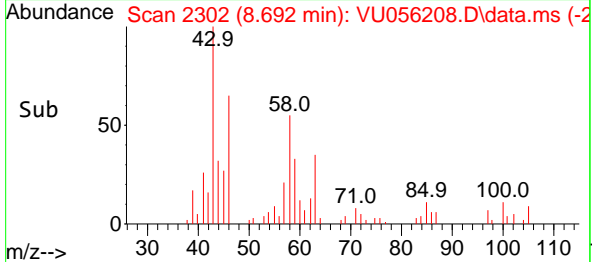
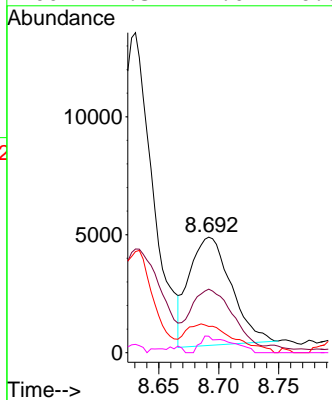


#48
 2-Hexanone
 Concen: 1.199 ug/L
 RT: 8.692 min Scan# 211
 Delta R.T. 0.006 min
 Lab File: VU056208.D
 Acq: 11 Nov 2023 11:36

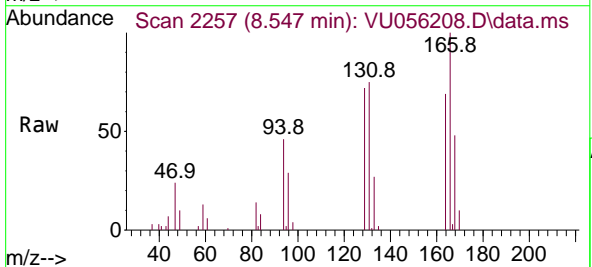
Instrument :
 MSVOA_U
 ClientSampleId :



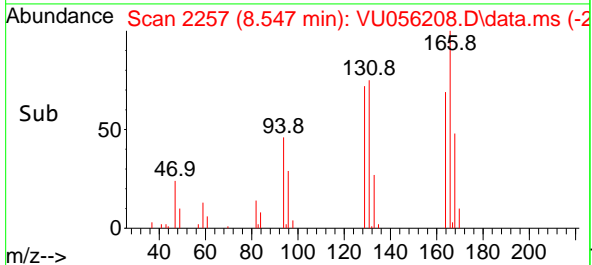
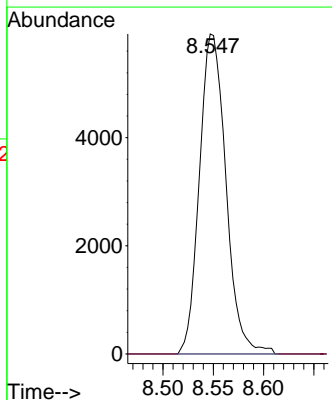
Tgt Ion: 43 Resp: 11163
 Ion Ratio Lower Upper
 43 100
 58 53.8 52.0 78.0
 57 29.8 17.4 26.2#
 100 11.3 11.0 16.6

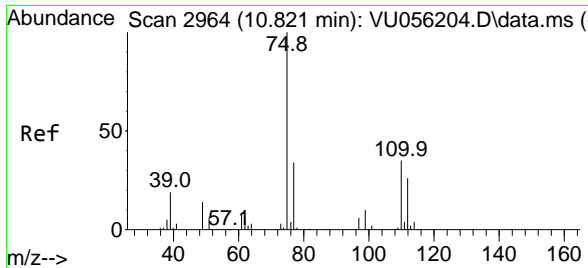


#49
 Dibromochloromethane
 Concen: 0.474 ug/L
 RT: 8.547 min Scan# 2257
 Delta R.T. -0.258 min
 Lab File: VU056208.D
 Acq: 11 Nov 2023 11:36



Tgt Ion:129 Resp: 10856
 Ion Ratio Lower Upper
 129 100
 127 0.0 55.4 102.8#





#61
 1,2,3-Trichloropropane
 Concen: 1.276 ug/L
 RT: 11.807 min Scan# 31
 Delta R.T. 0.987 min
 Lab File: VU056208.D
 Acq: 11 Nov 2023 11:36

Instrument :
 MSVOA_U
 ClientSampleId :

Tgt Ion	Resp	Lower	Upper
75	19545		
75	100		
110	2.3	29.7	44.5#
77	35.3	25.5	38.3

