

Data Path : Z:\voasrv\HPCHEM1\MSVOA\_U\Data\VU111123\  
 Data File : VU056220.D  
 Acq On : 11 Nov 2023 16:28  
 Operator : MD/SY  
 Sample : 05339-15RE  
 Misc : 25.0mL/MSVOA\_U/WATER  
 ALS Vial : 1 Sample Multiplier: 1

Instrument :  
 MSVOA\_U  
 ClientSampleId :  
 GCDK0RE

Quant Time: Nov 11 20:23:07 2023  
 Quant Method : Z:\voasrv\HPCHEM1\MSVOA\_U\Method\SFAMUTR110723WMA.M  
 Quant Title : TRACE VOA SFAM1.0  
 QLast Update : Sat Nov 11 20:19:10 2023  
 Response via : Initial Calibration

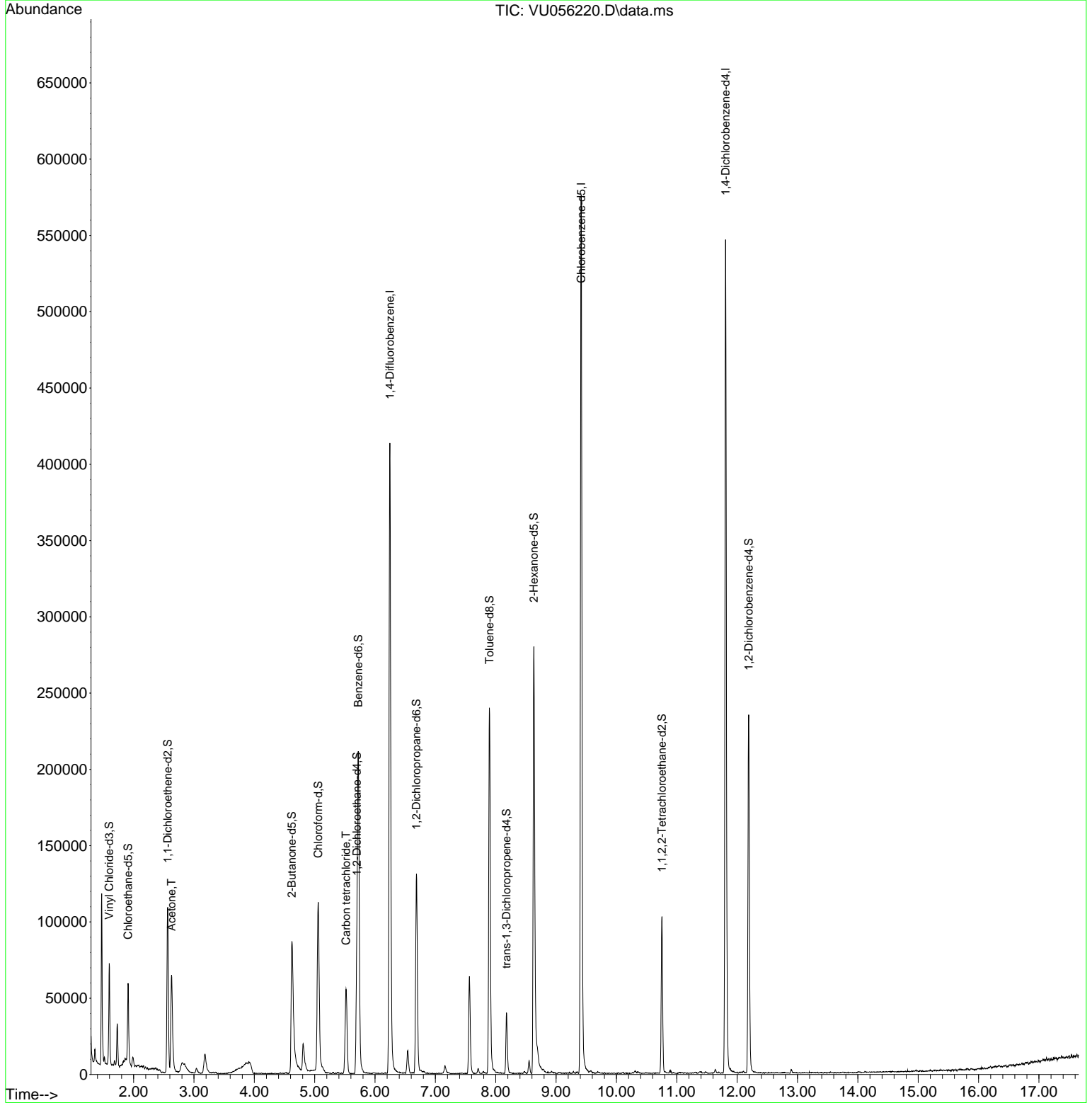
Compound	R.T.	QIon	Response	Conc	Units	Dev(Min)
Internal Standards						
1) 1,4-Difluorobenzene	6.245	114	353690	5.000	ug/L	0.00
28) Chlorobenzene-d5	9.415	117	351523	5.000	ug/L	0.00
58) 1,4-Dichlorobenzene-d4	11.807	152	158357	5.000	ug/L	0.00
System Monitoring Compounds						
4) Vinyl Chloride-d3	1.596	65	44529	2.028	ug/L	0.00
Spiked Amount	5.000	Range 40 - 130	Recovery	=	40.600%	
7) Chloroethane-d5	1.907	69	38343	2.574	ug/L	0.00
Spiked Amount	5.000	Range 65 - 130	Recovery	=	51.400%#	
11) 1,1-Dichloroethene-d2	2.563	65	21308	2.203	ug/L	0.00
Spiked Amount	5.000	Range 60 - 125	Recovery	=	44.000%#	
20) 2-Butanone-d5	4.621	46	123704	34.347	ug/L	0.00
Spiked Amount	50.000	Range 40 - 130	Recovery	=	68.700%	
24) Chloroform-d	5.058	84	110908	2.654	ug/L	0.00
Spiked Amount	5.000	Range 70 - 125	Recovery	=	53.000%#	
26) 1,2-Dichloroethane-d4	5.698	65	53096	2.886	ug/L	0.00
Spiked Amount	5.000	Range 70 - 130	Recovery	=	57.800%#	
32) Benzene-d6	5.721	84	209374	2.480	ug/L	0.00
Spiked Amount	5.000	Range 70 - 125	Recovery	=	49.600%#	
36) 1,2-Dichloropropane-d6	6.685	67	66897	2.692	ug/L	0.00
Spiked Amount	5.000	Range 60 - 140	Recovery	=	53.800%#	
41) Toluene-d8	7.894	98	174517	2.256	ug/L	0.00
Spiked Amount	5.000	Range 70 - 130	Recovery	=	45.200%#	
43) trans-1,3-Dichloroprop...	8.177	79	23578	2.482	ug/L	0.00
Spiked Amount	5.000	Range 55 - 130	Recovery	=	49.600%#	
46) 2-Hexanone-d5	8.631	63	98364	31.591	ug/L	0.00
Spiked Amount	50.000	Range 45 - 130	Recovery	=	63.180%	
56) 1,1,2,2-Tetrachloroeth...	10.753	84	53457	3.014	ug/L	0.00
Spiked Amount	5.000	Range 65 - 120	Recovery	=	60.200%#	
66) 1,2-Dichlorobenzene-d4	12.190	152	65137	2.667	ug/L	0.00
Spiked Amount	5.000	Range 80 - 120	Recovery	=	53.400%#	
Target Compounds						
13) Acetone	2.628	43	83327	31.371	ug/L	97
31) Carbon tetrachloride	5.518	117	40052	1.120	ug/L	97

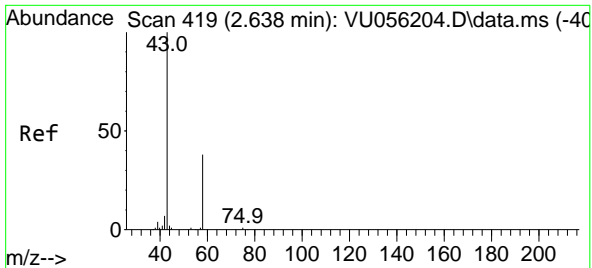
(#) = qualifier out of range (m) = manual integration (+) = signals summed

Data Path : Z:\voasrv\HPCHEM1\MSVOA\_U\Data\VU111123\  
 Data File : VU056220.D  
 Acq On : 11 Nov 2023 16:28  
 Operator : MD/SY  
 Sample : 05339-15RE  
 Misc : 25.0mL/MSVOA\_U/WATER  
 ALS Vial : 1 Sample Multiplier: 1

Instrument :  
 MSVOA\_U  
 ClientSampleId :  
 GCDK0RE

Quant Time: Nov 11 20:23:07 2023  
 Quant Method : Z:\voasrv\HPCHEM1\MSVOA\_U\Method\SFAMUTR110723WMA.M  
 Quant Title : TRACE VOA SFAM1.0  
 QLast Update : Sat Nov 11 20:19:10 2023  
 Response via : Initial Calibration

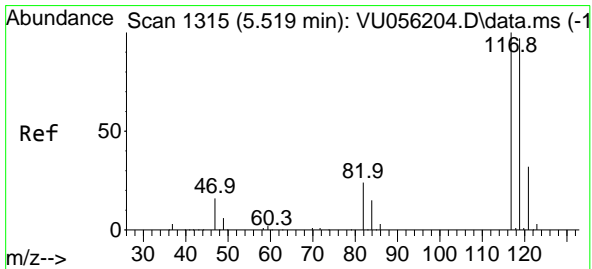
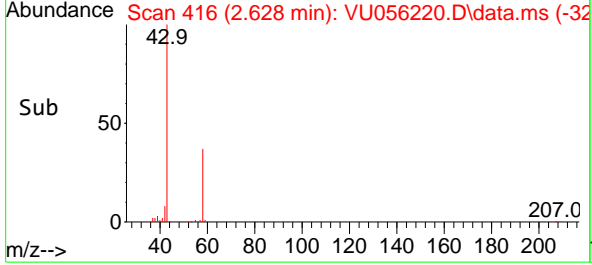
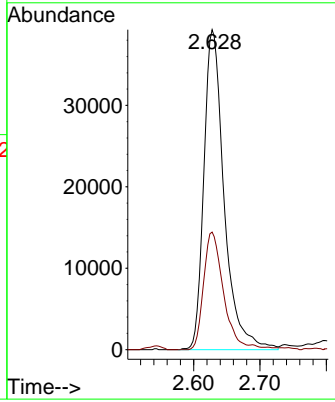
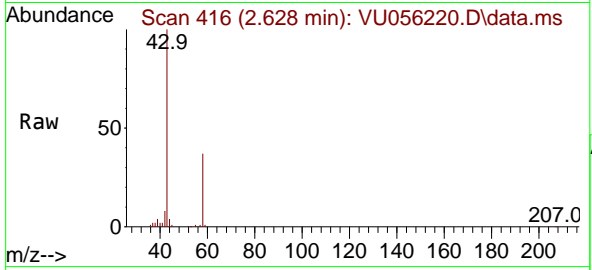




#13  
 Acetone  
 Concen: 31.371 ug/L  
 RT: 2.628 min Scan# 41  
 Delta R.T. -0.010 min  
 Lab File: VU056220.D  
 Acq: 11 Nov 2023 16:28

Instrument : MSVOA\_U  
 ClientSampleId : GCDK0RE

Tgt Ion	Resp	Lower	Upper
43	83327	100	
58	35.5	0.0	74.4



#31  
 Carbon tetrachloride  
 Concen: 1.120 ug/L  
 RT: 5.518 min Scan# 1315  
 Delta R.T. -0.000 min  
 Lab File: VU056220.D  
 Acq: 11 Nov 2023 16:28

Tgt Ion	Resp	Lower	Upper
117	40052	100	
119	99.8	77.2	115.8

