

Data Path : Z:\voasrv\HPCHEM1\MSVOA_U\Data\VU111324\
 Data File : VU061646.D
 Acq On : 14 Nov 2024 01:01
 Operator : MD/SY
 Sample : P4803-15
 Misc : 25mL/MSVOA_U/WATER
 ALS Vial : 39 Sample Multiplier: 1

Instrument :
 MSVOA_U
 ClientSampleId :
 A0AM3

Quant Time: Nov 14 04:08:51 2024
 Quant Method : Z:\voasrv\HPCHEM1\MSVOA_U\Method\SFAMUTR111324WMA.M
 Quant Title : TRACE VOA SFAM1.0
 QLast Update : Thu Nov 14 04:06:27 2024
 Response via : Initial Calibration

Compound	R.T.	QIon	Response	Conc	Units	Dev(Min)

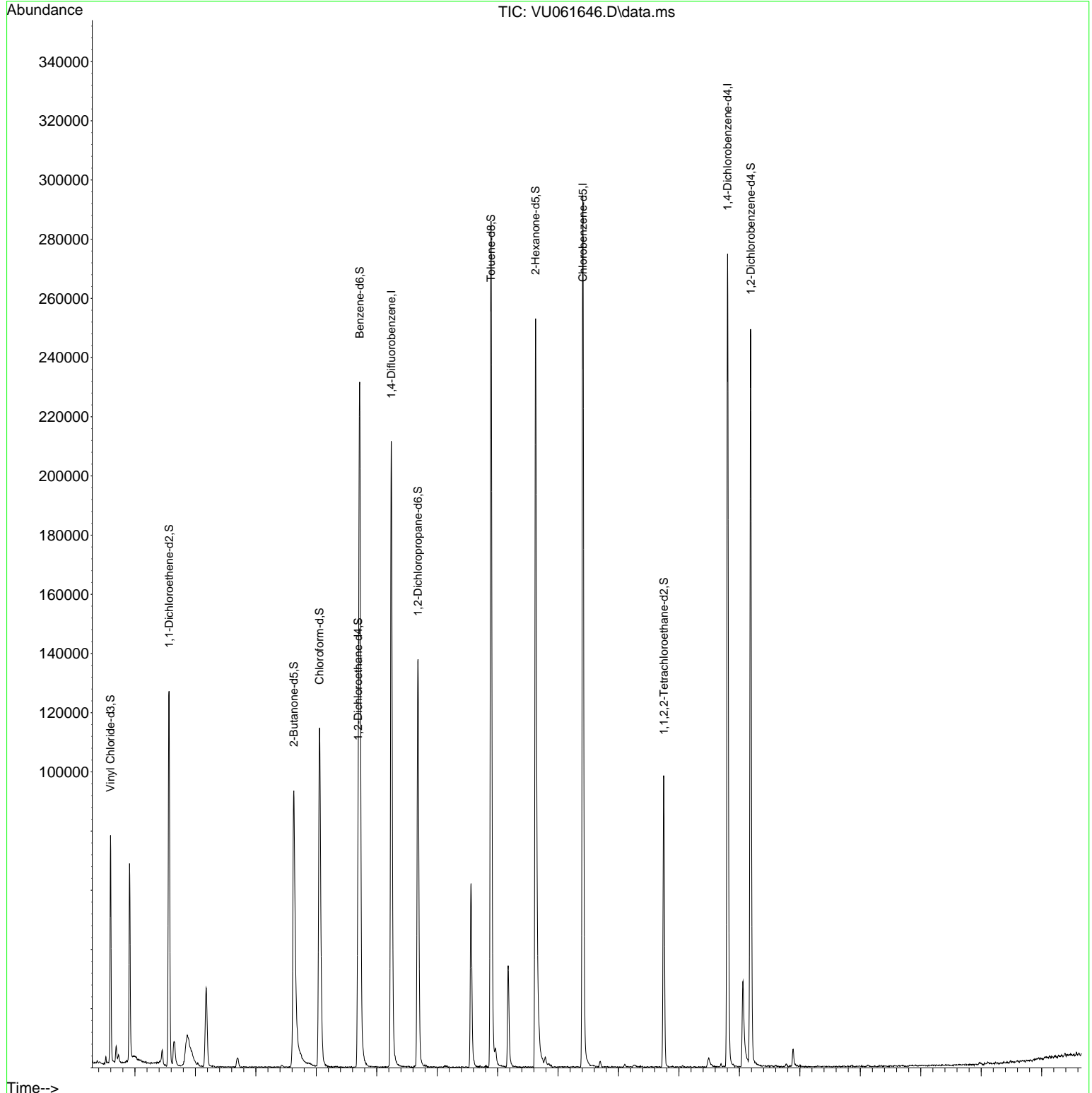
Internal Standards						
1) 1,4-Difluorobenzene	6.242	114	187425	5.000	ug/L	0.00
28) Chlorobenzene-d5	9.409	117	173947	5.000	ug/L	0.00
58) 1,4-Dichlorobenzene-d4	11.804	152	76580	5.000	ug/L	0.00
System Monitoring Compounds						
4) Vinyl Chloride-d3	1.596	65	54150	4.472	ug/L	0.00
Spiked Amount	5.000	Range 40 - 130	Recovery =	89.400%		
7) Chloroethane-d5	1.911	69	49461	4.784	ug/L	0.00
Spiked Amount	5.000	Range 65 - 130	Recovery =	95.600%		
11) 1,1-Dichloroethene-d2	2.563	65	24002	4.418	ug/L	0.00
Spiked Amount	5.000	Range 60 - 125	Recovery =	88.400%		
20) 2-Butanone-d5	4.628	46	118936	46.273	ug/L	0.00
Spiked Amount	50.000	Range 40 - 130	Recovery =	92.540%		
24) Chloroform-d	5.052	84	110102	4.574	ug/L	0.00
Spiked Amount	5.000	Range 70 - 125	Recovery =	91.400%		
26) 1,2-Dichloroethane-d4	5.692	65	53701	4.649	ug/L	0.00
Spiked Amount	5.000	Range 70 - 130	Recovery =	93.000%		
32) Benzene-d6	5.718	84	230946	4.799	ug/L	0.00
Spiked Amount	5.000	Range 70 - 125	Recovery =	96.000%		
36) 1,2-Dichloropropane-d6	6.682	67	67924	4.786	ug/L	0.00
Spiked Amount	5.000	Range 60 - 140	Recovery =	95.800%		
41) Toluene-d8	7.891	98	206335	4.600	ug/L	0.00
Spiked Amount	5.000	Range 70 - 130	Recovery =	92.000%		
43) trans-1,3-Dichloroprop...	8.174	79	21512	4.115	ug/L	0.00
Spiked Amount	5.000	Range 55 - 130	Recovery =	82.200%		
46) 2-Hexanone-d5	8.627	63	93887	45.447	ug/L	0.00
Spiked Amount	50.000	Range 45 - 130	Recovery =	90.900%		
56) 1,1,2,2-Tetrachloroeth...	10.750	84	49776	4.449	ug/L	0.00
Spiked Amount	5.000	Range 65 - 120	Recovery =	89.000%		
66) 1,2-Dichlorobenzene-d4	12.187	152	67958	4.982	ug/L	0.00
Spiked Amount	5.000	Range 80 - 120	Recovery =	99.600%		
Target Compounds						
						Qvalue
13) Acetone	2.647	43	13579	8.385	ug/L	95
25) Chloroform	5.081	83	15112	0.634	ug/L	93

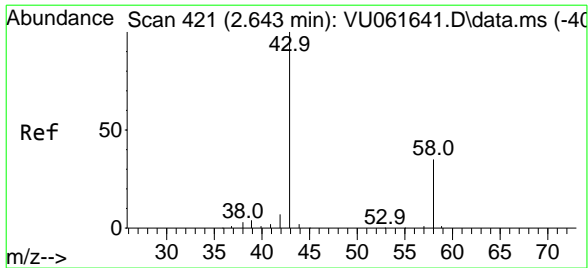
(#) = qualifier out of range (m) = manual integration (+) = signals summed

Data Path : Z:\voasrv\HPCHEM1\MSVOA_U\Data\VU111324\
 Data File : VU061646.D
 Acq On : 14 Nov 2024 01:01
 Operator : MD/SY
 Sample : P4803-15
 Misc : 25mL/MSVOA_U/WATER
 ALS Vial : 39 Sample Multiplier: 1

Instrument :
 MSVOA_U
 ClientSampleId :
 A0AM3

Quant Time: Nov 14 04:08:51 2024
 Quant Method : Z:\voasrv\HPCHEM1\MSVOA_U\Method\SFAMUTR111324WMA.M
 Quant Title : TRACE VOA SFAM1.0
 QLast Update : Thu Nov 14 04:06:27 2024
 Response via : Initial Calibration

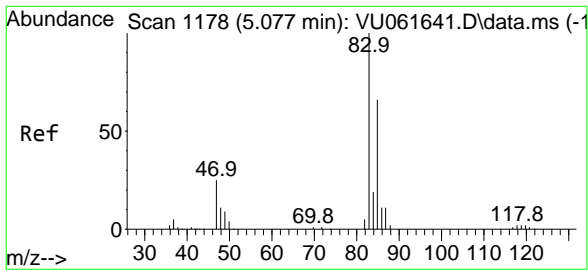
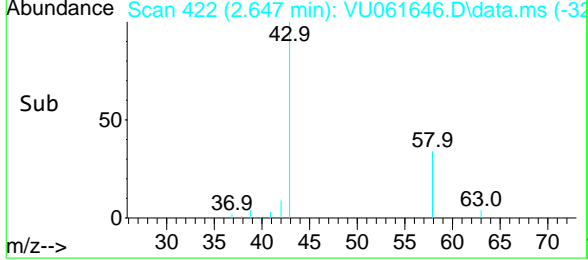
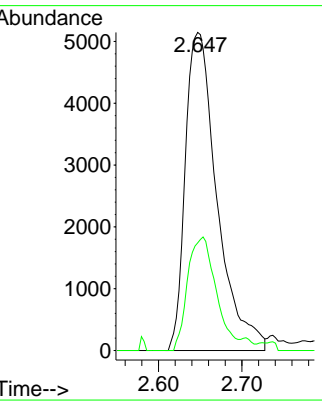
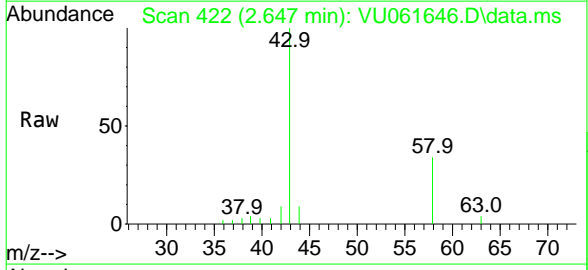




#13
 Acetone
 Concen: 8.385 ug/L
 RT: 2.647 min Scan# 42
 Delta R.T. 0.004 min
 Lab File: VU061646.D
 Acq: 14 Nov 2024 01:01

Instrument : MSVOA_U
 ClientSampleId : A0AM3

Tgt Ion: 43 Resp: 13579
 Ion Ratio Lower Upper
 43 100
 58 32.0 0.0 69.8



#25
 Chloroform
 Concen: 0.634 ug/L
 RT: 5.081 min Scan# 1179
 Delta R.T. 0.004 min
 Lab File: VU061646.D
 Acq: 14 Nov 2024 01:01

Tgt Ion: 83 Resp: 15112
 Ion Ratio Lower Upper
 83 100
 85 68.6 44.1 81.9

