

Data Path : Z:\voasrv\HPCHEM1\MSVOA_U\Data\VU111324\
 Data File : VU061637.D
 Acq On : 13 Nov 2024 20:32
 Operator : MD/SY
 Sample : P4747-19
 Misc : 25mL/MSVOA_U/WATER
 ALS Vial : 28 Sample Multiplier: 1

Instrument :
 MSVOA_U
 ClientSampleId :
 GCPD6

Integration Parameters: rteint.p
 Integrator: RTE
 Smoothing : ON
 Sampling : 1
 Start Thrs: 0.1
 Stop Thrs : 0
 Filtering: 5
 Min Area: 3 % of largest Peak
 Max Peaks: 100
 Peak Location: TOP

If leading or trailing edge < 100 prefer < Baseline drop else tangent >
 Peak separation: 5

Method : Z:\voasrv\HPCHEM1\MSVOA_U\Method\SFAMUTR111324WMA.M
 Title : TRACE VOA SFAM1.0

Signal : TIC: VU061637.D\data.ms

peak #	R.T. min	first scan	max scan	last scan	PK TY	peak height	corr. area	corr. % max.	% of total
1	1.374	16	26	32	rBV2	7385	11937	2.23%	0.253%
2	1.596	74	95	105	rBV3	101491	298178	55.75%	6.309%
3	1.911	187	193	230	rVB	77262	161924	30.28%	3.426%
4	2.560	383	395	409	rBV	94882	155401	29.06%	3.288%
5	2.641	409	420	425	rVV	14571	26411	4.94%	0.559%
6	2.676	425	431	448	rVB	24650	45154	8.44%	0.955%
7	3.692	737	747	758	rVB5	2829	6132	1.15%	0.130%
8	4.624	1026	1037	1088	rBV	67389	200678	37.52%	4.246%
9	5.052	1156	1170	1192	rBV	99156	221994	41.51%	4.697%
10	5.718	1357	1377	1408	rBV2	195181	516391	96.55%	10.926%
11	6.242	1527	1540	1561	rBV	185347	364776	68.20%	7.718%
12	6.538	1622	1632	1650	rBV3	19157	36447	6.81%	0.771%
13	6.682	1664	1677	1696	rBV	120381	241559	45.17%	5.111%
14	7.560	1939	1950	1974	rVB	44960	83356	15.59%	1.764%
15	7.891	2041	2053	2087	rBV	223490	409748	76.61%	8.669%
16	8.174	2129	2141	2160	rBV2	25430	46473	8.69%	0.983%
17	8.547	2243	2257	2270	rBV6	5904	10375	1.94%	0.220%
18	8.628	2270	2282	2321	rBV2	252430	534832	100.00%	11.316%
19	9.409	2513	2525	2551	rBV	260647	454328	84.95%	9.612%
20	10.132	2742	2750	2763	rBV3	6235	10585	1.98%	0.224%
21	10.746	2930	2941	2961	rBV	92655	151598	28.34%	3.207%
22	11.804	3258	3270	3293	rBV	242263	396736	74.18%	8.394%
23	12.187	3376	3389	3406	rBV	199737	341457	63.84%	7.224%

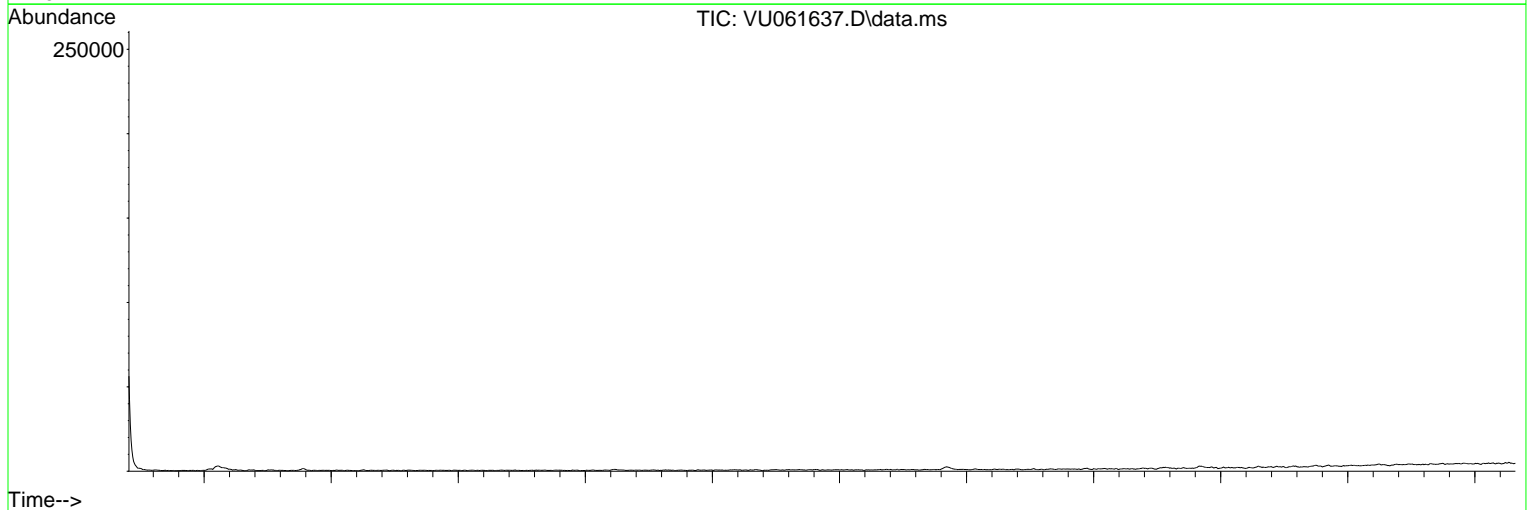
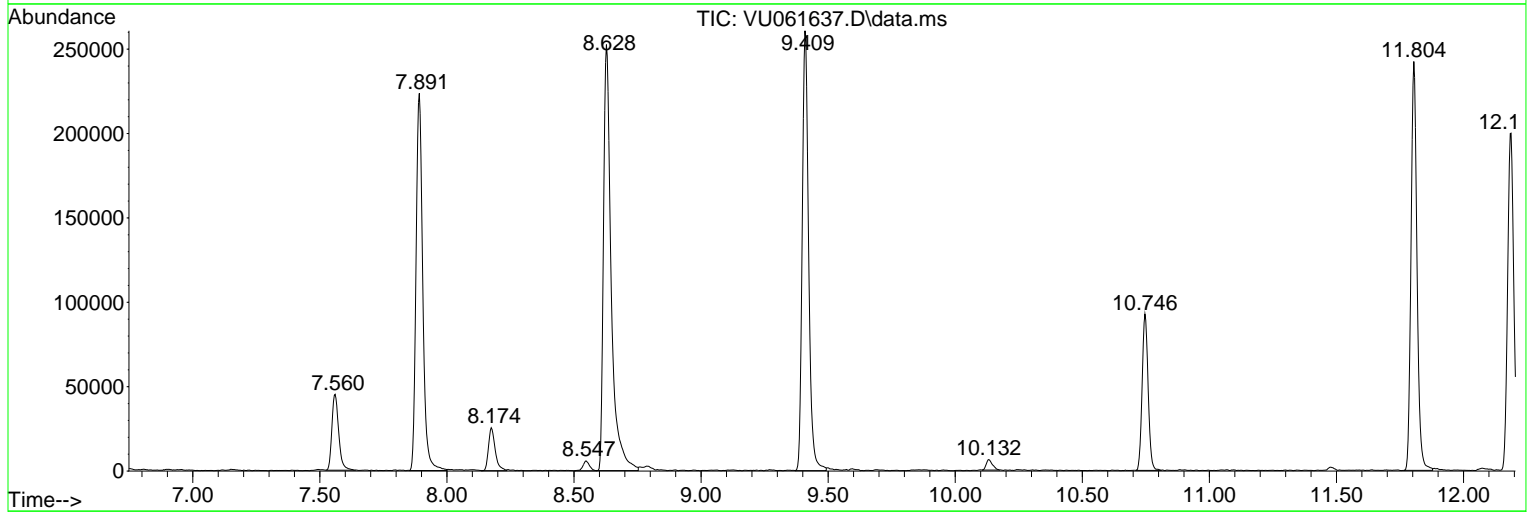
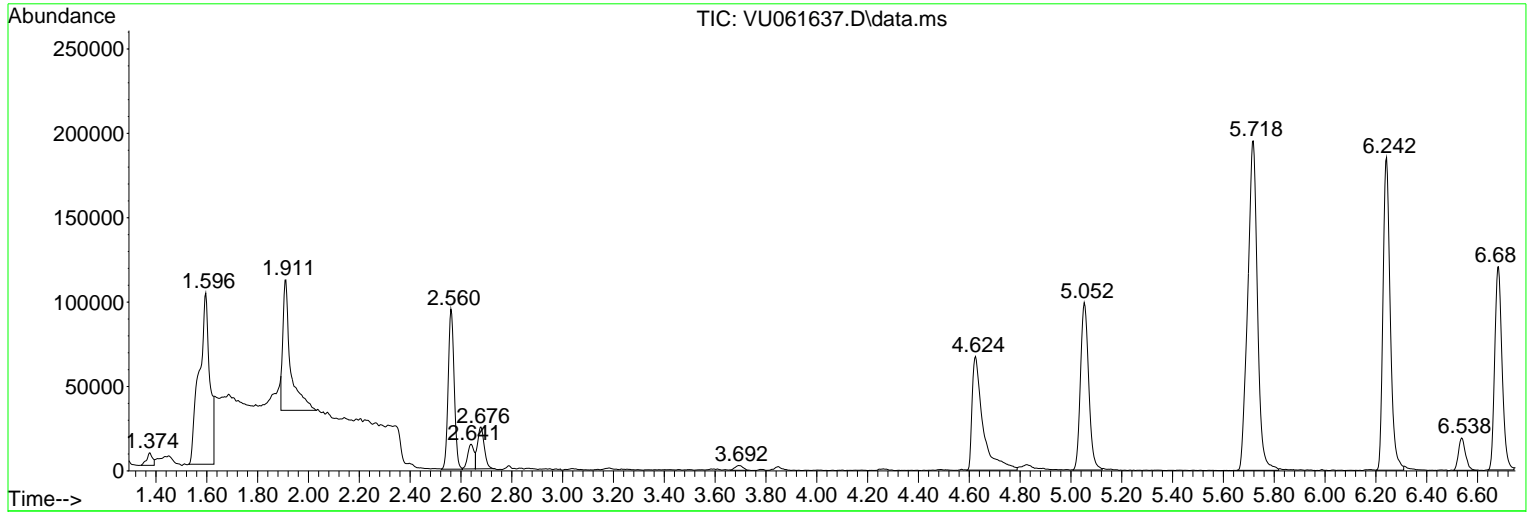
Sum of corrected areas: 4726470

Data Path : Z:\voasrv\HPCHEM1\MSVOA_U\Data\VU111324\
 Data File : VU061637.D
 Acq On : 13 Nov 2024 20:32
 Operator : MD/SY
 Sample : P4747-19
 Misc : 25mL/MSVOA_U/WATER
 ALS Vial : 28 Sample Multiplier: 1

Instrument :
 MSVOA_U
 ClientSampleId :
 GCPD6

Quant Method : Z:\voasrv\HPCHEM1\MSVOA_U\Method\SFAMUTR111324WMA.M
 Quant Title : TRACE VOA SFAM1.0

TIC Library : C:\Database\NIST20.L
 TIC Integration Parameters: LSCINT.P



Library Search Compound Report

Data Path : Z:\voasrv\HPCHEM1\MSVOA_U\Data\VU111324\
Data File : VU061637.D
Acq On : 13 Nov 2024 20:32
Operator : MD/SY
Sample : P4747-19
Misc : 25mL/MSVOA_U/WATER
ALS Vial : 28 Sample Multiplier: 1

Instrument :
MSVOA_U
ClientSampleId :
GCPD6

Quant Method : Z:\voasrv\HPCHEM1\MSVOA_U\Method\SFAMUTR111324WMA.M
Quant Title : TRACE VOA SFAM1.0

TIC Library : C:\Database\NIST20.L
TIC Integration Parameters: LSCINT.P

No Library Search Compounds Detected

Data Path : Z:\voasrv\HPCHEM1\MSVOA_U\Data\VU111324\
Data File : VU061637.D
Acq On : 13 Nov 2024 20:32
Operator : MD/SY
Sample : P4747-19
Misc : 25mL/MSVOA_U/WATER
ALS Vial : 28 Sample Multiplier: 1

Instrument :
MSVOA_U
ClientSampleId :
GCPD6

Quant Method : Z:\voasrv\HPCHEM1\MSVOA_U\Method\SFAMUTR111324WMA.M
Quant Title : TRACE VOA SFAM1.0

TIC Library : C:\Database\NIST20.L
TIC Integration Parameters: LSCINT.P

TIC Top Hit name	RT	EstConc	Units	Response	#	RT	Resp	Conc
------------------	----	---------	-------	----------	---	----	------	------

-----|