

Data Path : Z:\voasrv\HPCHEM1\MSVOA_U\Data\VU112022\
 Data File : VU051981.D
 Acq On : 20 Nov 2022 18:14
 Operator : JC/MD
 Sample : N5710-05
 Misc : 5.0mL/MSVOA_U/WATER
 ALS Vial : 17 Sample Multiplier: 1

Instrument :
 MSVOA_U
 ClientSampleId :
 COKY4

Quant Time: Nov 21 01:03:02 2022
 Quant Method : Z:\voasrv\HPCHEM1\MSVOA_U\Method\SFAMULM111522WMA.M
 Quant Title : VOC Analysis
 QLast Update : Fri Nov 18 00:53:49 2022
 Response via : Initial Calibration

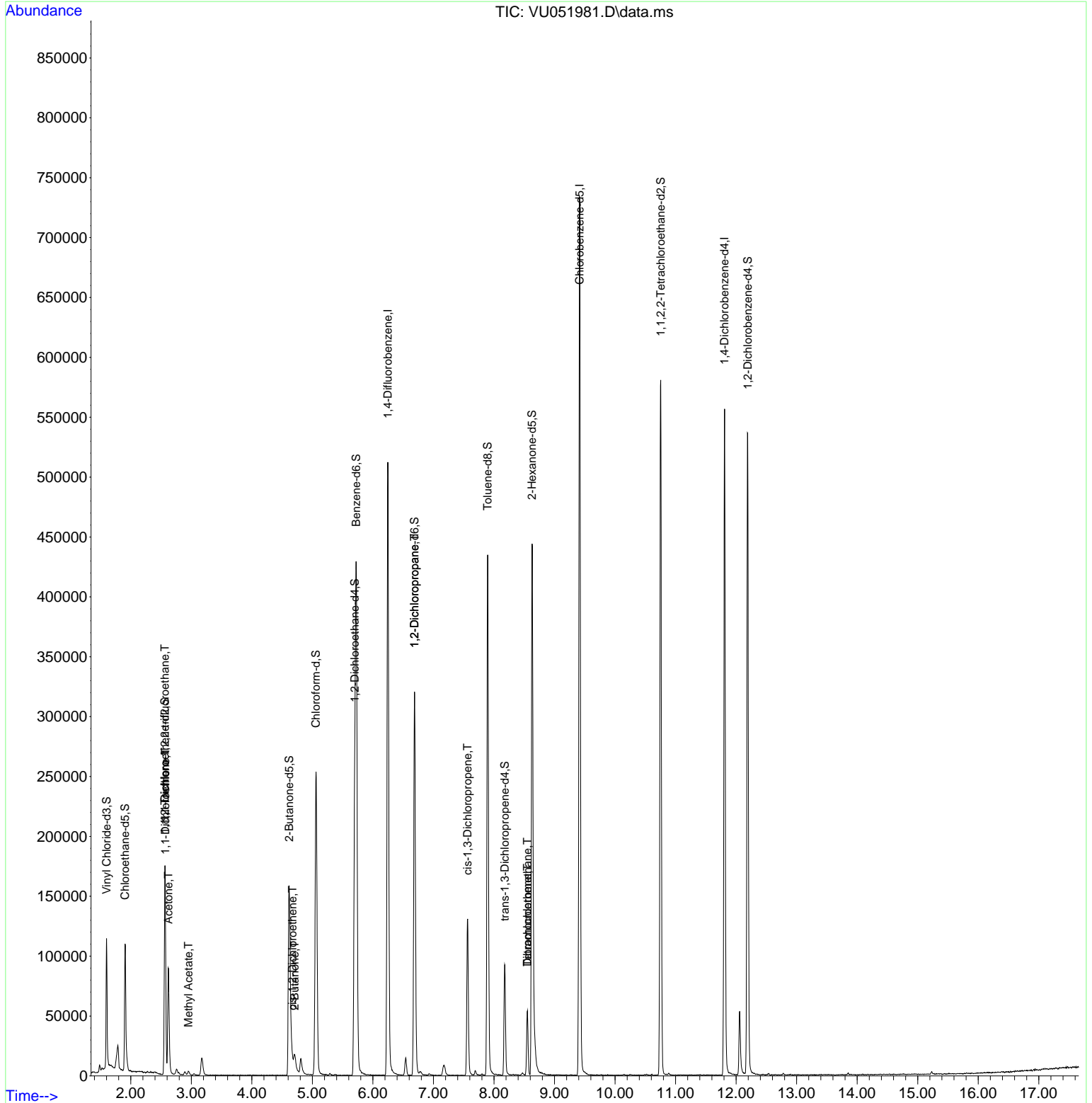
Compound	R.T.	QIon	Response	Conc	Units	Dev(Min)
Internal Standards						
1) 1,4-Difluorobenzene	6.247	114	429030	50.000	ug/L	0.00
28) Chlorobenzene-d5	9.414	117	427449	50.000	ug/L	0.00
58) 1,4-Dichlorobenzene-d4	11.809	152	152128	50.000	ug/L	0.00
System Monitoring Compounds						
4) Vinyl Chloride-d3	1.600	65	79527	37.758	ug/L	0.00
Spiked Amount	50.000	Range 60 - 135	Recovery =	75.520%		
7) Chloroethane-d5	1.906	69	92731	43.942	ug/L	0.00
Spiked Amount	50.000	Range 70 - 130	Recovery =	87.880%		
11) 1,1-Dichloroethene-d2	2.565	63	102634	27.173	ug/L	0.00
Spiked Amount	50.000	Range 60 - 125	Recovery =	54.340%#		
21) 2-Butanone-d5	4.616	46	232740	97.176	ug/L	0.00
Spiked Amount	100.000	Range 40 - 130	Recovery =	97.180%		
24) Chloroform-d	5.060	84	240712	45.590	ug/L	0.00
Spiked Amount	50.000	Range 70 - 125	Recovery =	91.180%		
26) 1,2-Dichloroethane-d4	5.700	65	152362	47.141	ug/L	0.00
Spiked Amount	50.000	Range 70 - 125	Recovery =	94.280%		
32) Benzene-d6	5.726	84	412685	46.304	ug/L	0.00
Spiked Amount	50.000	Range 70 - 125	Recovery =	92.600%		
36) 1,2-Dichloropropane-d6	6.687	67	160984	48.526	ug/L	0.00
Spiked Amount	50.000	Range 70 - 120	Recovery =	97.060%		
41) Toluene-d8	7.896	98	302145	41.302	ug/L	0.00
Spiked Amount	50.000	Range 80 - 120	Recovery =	82.600%		
43) trans-1,3-Dichloroprop...	8.179	79	53724	40.657	ug/L	0.00
Spiked Amount	50.000	Range 60 - 125	Recovery =	81.320%		
47) 2-Hexanone-d5	8.629	63	147653	87.574	ug/L	0.00
Spiked Amount	100.000	Range 45 - 130	Recovery =	87.570%		
56) 1,1,2,2-Tetrachloroeth...	10.754	84	302510	46.852	ug/L	0.00
Spiked Amount	50.000	Range 65 - 120	Recovery =	93.700%		
66) 1,2-Dichlorobenzene-d4	12.192	152	147936	55.258	ug/L	0.00
Spiked Amount	50.000	Range 80 - 120	Recovery =	110.520%		
Target Compounds						
10) 1,1,2-Trichloro-1,2,2-...	2.562	101	1097	0.401	ug/L #	20
12) 1,1-Dichloroethene	2.571	96	1505	0.589	ug/L #	1
13) Acetone	2.620	43	93720	36.575	ug/L	99
15) Methyl Acetate	2.951	43	4193	1.200	ug/L	100
20) cis-1,2-Dichloroethene	4.671	96	2203	0.685	ug/L	74
22) 2-Butanone	4.706	43	23072	7.973	ug/L	93
37) 1,2-Dichloropropane	6.687	63	15351	4.409	ug/L #	90
39) cis-1,3-Dichloropropene	7.565	75	3185	0.699	ug/L #	64
46) Tetrachloroethene	8.552	164	12404	5.332	ug/L	95
49) Dibromochloromethane	8.552	129	11622	3.186	ug/L #	11

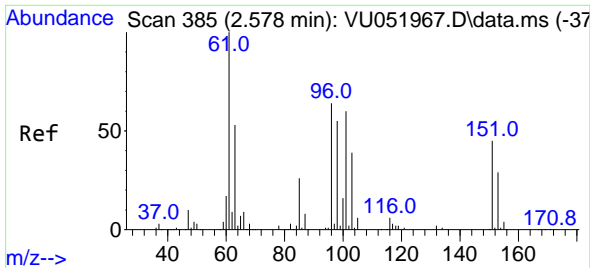
(#) = qualifier out of range (m) = manual integration (+) = signals summed

Data Path : Z:\voasrv\HPCHEM1\MSVOA_U\Data\VU112022\
 Data File : VU051981.D
 Acq On : 20 Nov 2022 18:14
 Operator : JC/MD
 Sample : N5710-05
 Misc : 5.0mL/MSVOA_U/WATER
 ALS Vial : 17 Sample Multiplier: 1

Instrument :
 MSVOA_U
 ClientSampleId :
 C0KY4

Quant Time: Nov 21 01:03:02 2022
 Quant Method : Z:\voasrv\HPCHEM1\MSVOA_U\Method\SFAMULM111522WMA.M
 Quant Title : VOC Analysis
 QLast Update : Fri Nov 18 00:53:49 2022
 Response via : Initial Calibration

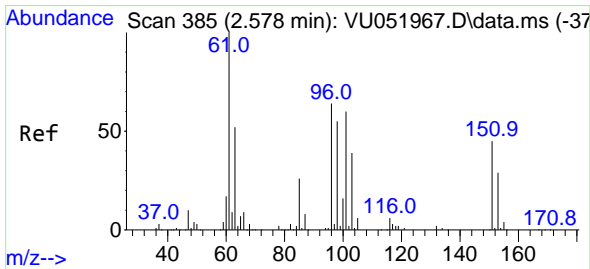
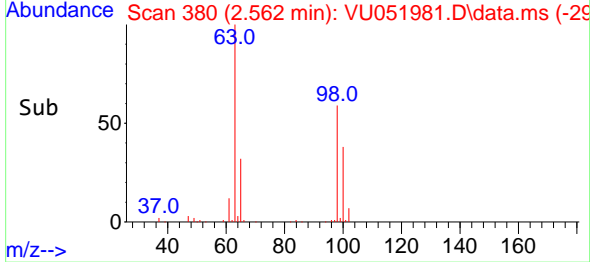
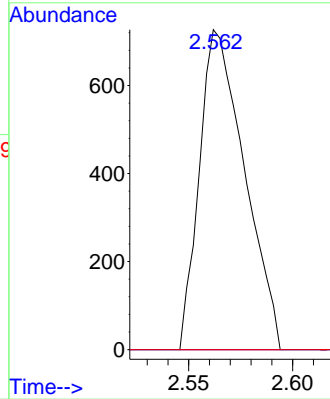
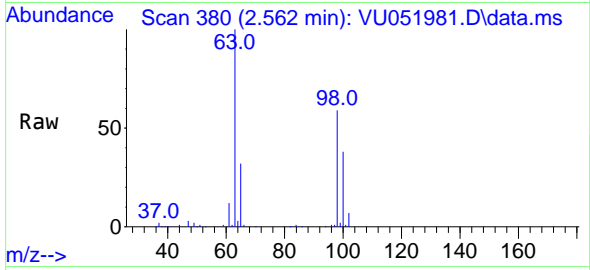




#10
 1,1,2-Trichloro-1,2,2-trifluoroethane
 Concen: 0.401 ug/L
 RT: 2.562 min Scan# 311
 Delta R.T. -0.013 min
 Lab File: VU051981.D
 Acq: 20 Nov 2022 18:14

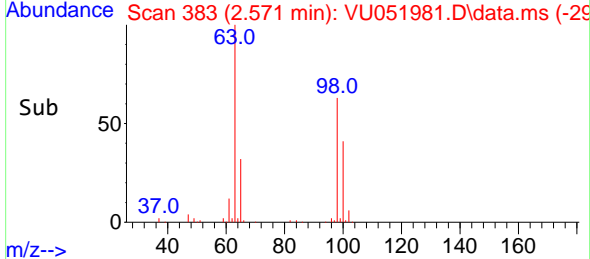
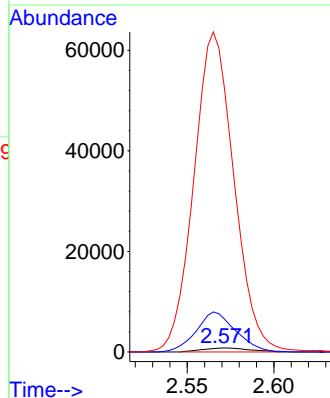
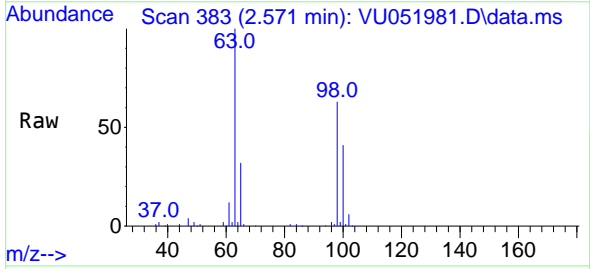
Instrument :
 MSVOA_U
 ClientSampleId :
 C0KY4

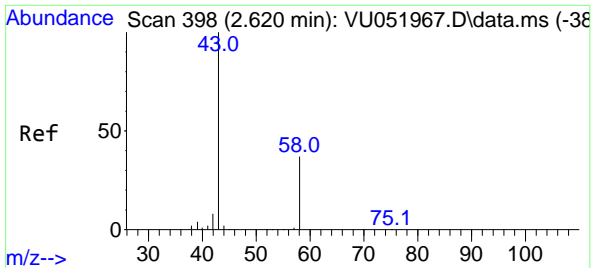
Tgt Ion:101 Resp: 1097
 Ion Ratio Lower Upper
 101 100
 85 0.0 34.2 51.2#
 151 0.0 58.3 87.5#



#12
 1,1-Dichloroethene
 Concen: 0.589 ug/L
 RT: 2.571 min Scan# 383
 Delta R.T. -0.003 min
 Lab File: VU051981.D
 Acq: 20 Nov 2022 18:14

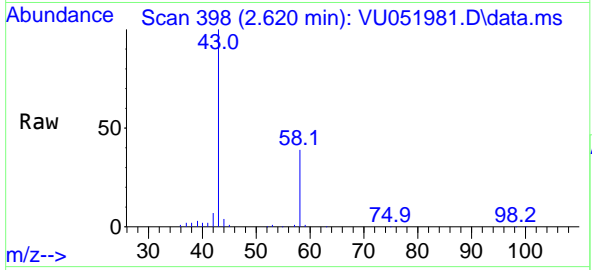
Tgt Ion: 96 Resp: 1505
 Ion Ratio Lower Upper
 96 100
 61 827.7 110.7 205.5#
 63 6653.1 68.6 127.4#



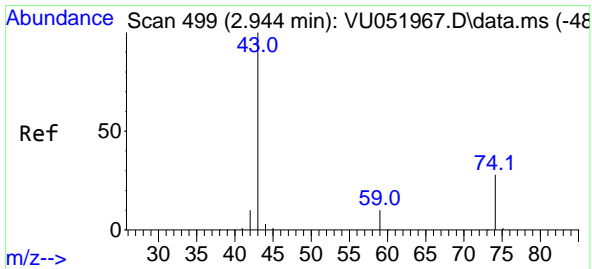
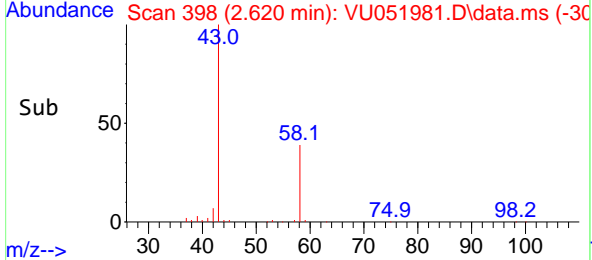
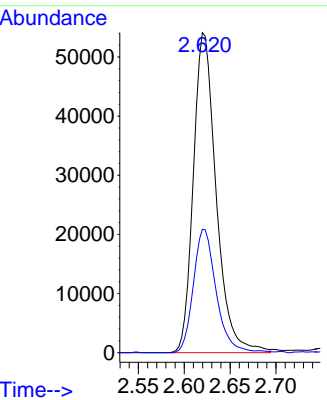


#13
 Acetone
 Concen: 36.575 ug/L
 RT: 2.620 min Scan# 398
 Delta R.T. -0.000 min
 Lab File: VU051981.D
 Acq: 20 Nov 2022 18:14

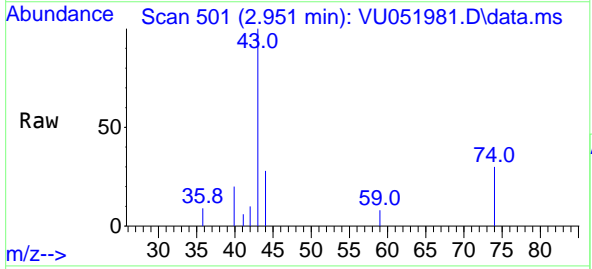
Instrument : MSVOA_U
 ClientSampleId : COKY4



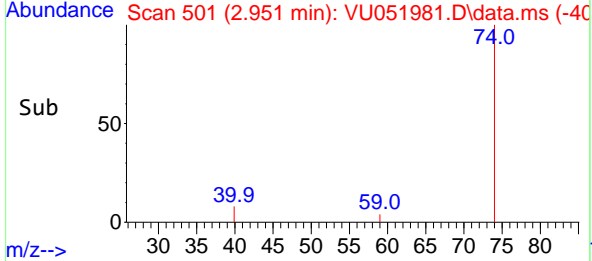
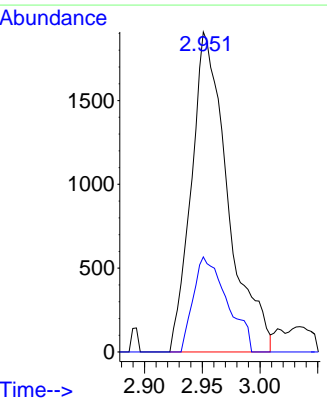
Tgt Ion: 43 Resp: 93720
 Ion Ratio Lower Upper
 43 100
 58 38.3 0.0 75.4

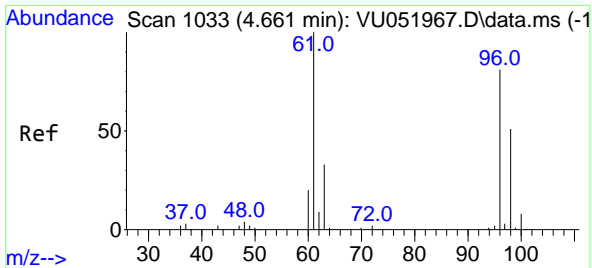


#15
 Methyl Acetate
 Concen: 1.200 ug/L
 RT: 2.951 min Scan# 501
 Delta R.T. 0.009 min
 Lab File: VU051981.D
 Acq: 20 Nov 2022 18:14



Tgt Ion: 43 Resp: 4193
 Ion Ratio Lower Upper
 43 100
 74 27.5 21.8 32.8



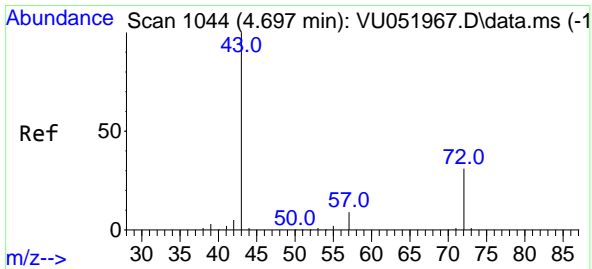
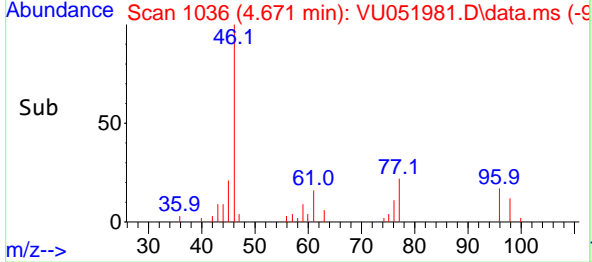
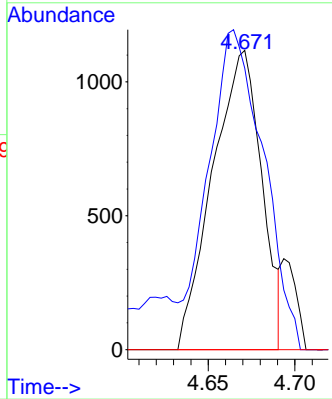
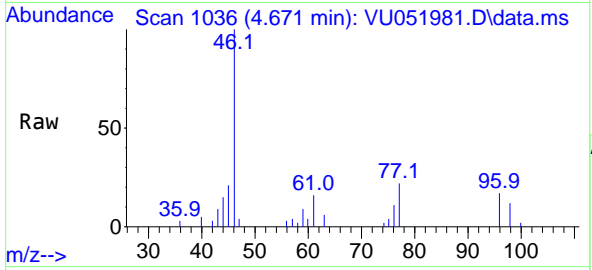


#20
 cis-1,2-Dichloroethene
 Concen: 0.685 ug/L
 RT: 4.671 min Scan# 1036
 Delta R.T. 0.006 min
 Lab File: VU051981.D
 Acq: 20 Nov 2022 18:14

Instrument : MSVOA_U
 ClientSampleId : C0KY4

Tgt Ion: 96 Resp: 2203

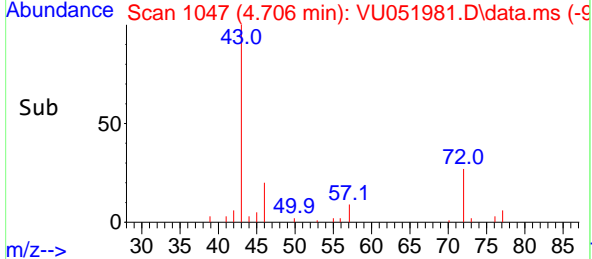
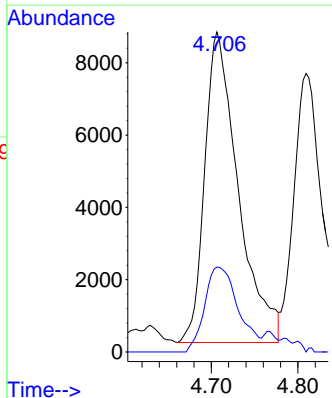
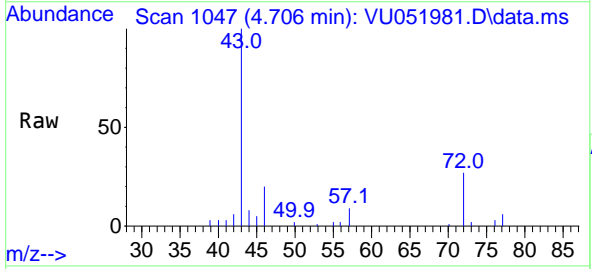
Ion	Ratio	Lower	Upper
96	100		
61	94.0	86.0	159.8
68	0.0	0.0	0.0

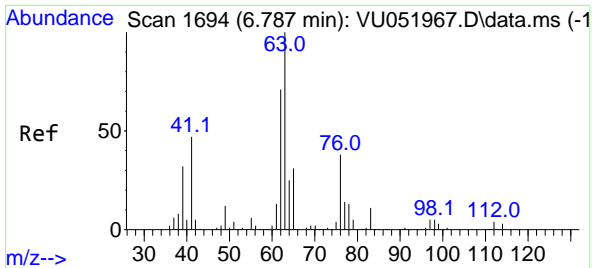


#22
 2-Butanone
 Concen: 7.973 ug/L
 RT: 4.706 min Scan# 1047
 Delta R.T. 0.009 min
 Lab File: VU051981.D
 Acq: 20 Nov 2022 18:14

Tgt Ion: 43 Resp: 23072

Ion	Ratio	Lower	Upper
43	100		
72	27.6	15.7	47.1

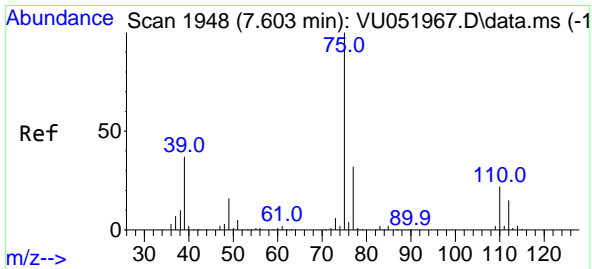
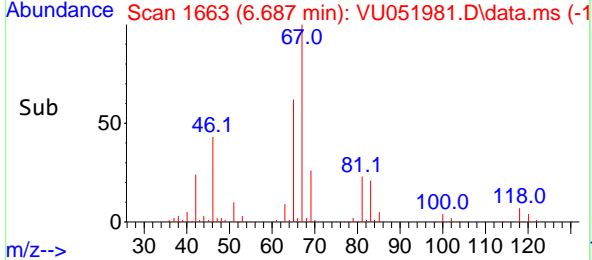
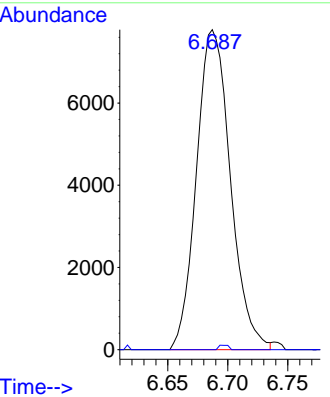
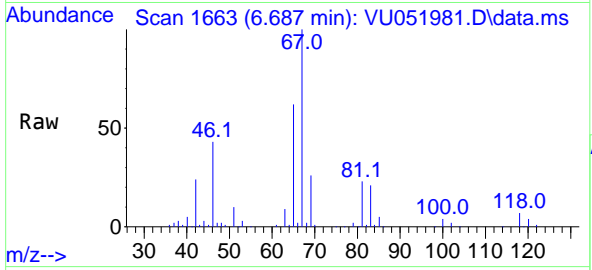




#37
 1,2-Dichloropropane
 Concen: 4.409 ug/L
 RT: 6.687 min Scan# 1
 Delta R.T. -0.103 min
 Lab File: VU051981.D
 Acq: 20 Nov 2022 18:14

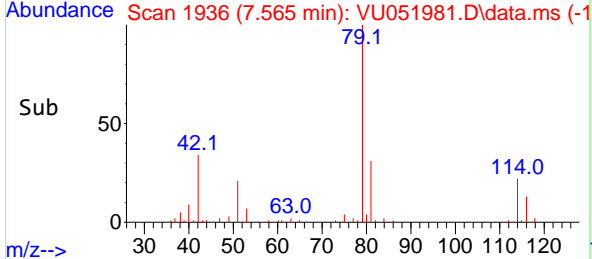
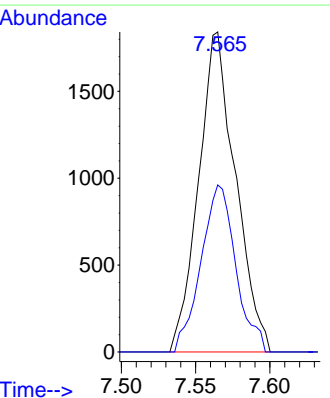
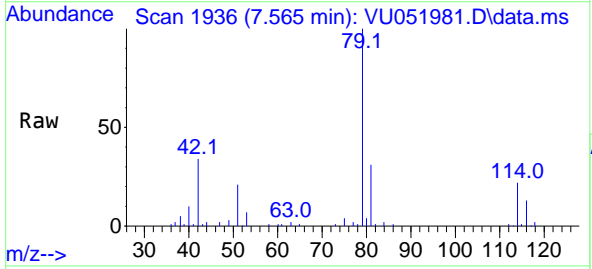
Instrument : MSVOA_U
 ClientSampleId : C0KY4

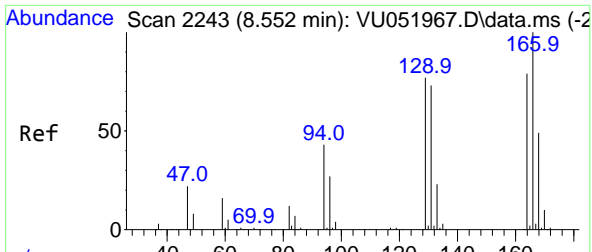
Tgt Ion: 63 Resp: 15351
 Ion Ratio Lower Upper
 63 100
 112 0.4 3.0 4.6#



#39
 cis-1,3-Dichloropropene
 Concen: 0.699 ug/L
 RT: 7.565 min Scan# 1936
 Delta R.T. -0.042 min
 Lab File: VU051981.D
 Acq: 20 Nov 2022 18:14

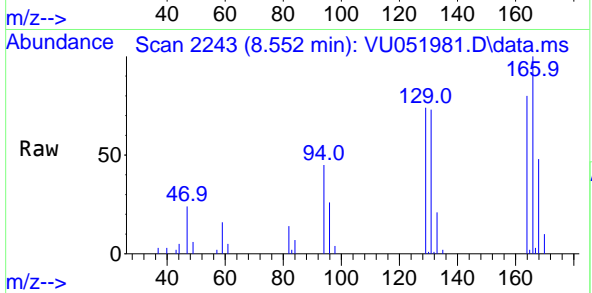
Tgt Ion: 75 Resp: 3185
 Ion Ratio Lower Upper
 75 100
 77 52.2 22.5 41.7#



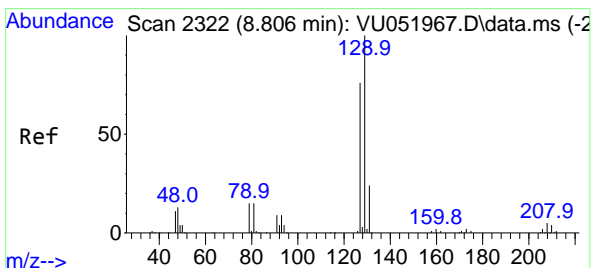
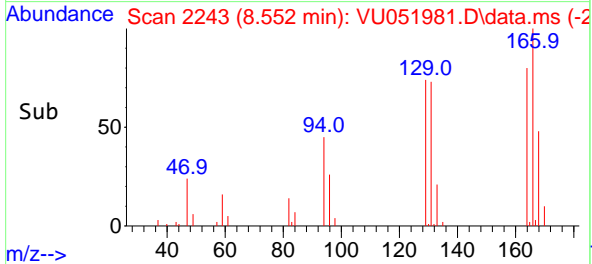
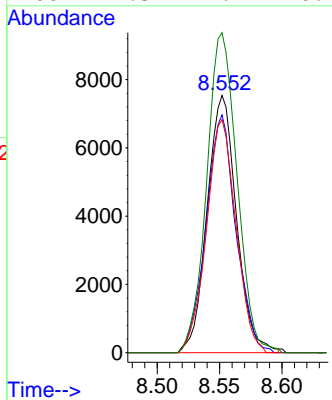


#46
 Tetrachloroethene
 Concen: 5.332 ug/L
 RT: 8.552 min Scan# 211
 Delta R.T. -0.000 min
 Lab File: VU051981.D
 Acq: 20 Nov 2022 18:14

Instrument : MSVOA_U
 ClientSampleId : COKY4



Tgt Ion:164 Resp: 12404
 Ion Ratio Lower Upper
 164 100
 129 92.4 68.5 127.1
 131 90.6 66.6 123.8
 166 124.3 91.9 170.7



#49
 Dibromochloromethane
 Concen: 3.186 ug/L
 RT: 8.552 min Scan# 2243
 Delta R.T. -0.257 min
 Lab File: VU051981.D
 Acq: 20 Nov 2022 18:14

Tgt Ion:129 Resp: 11622
 Ion Ratio Lower Upper
 129 100
 127 0.0 54.4 101.0#

