

Data Path : Z:\voasrv\HPCHEM1\MSVOA\_U\Data\VU112024\  
 Data File : VU061868.D  
 Acq On : 20 Nov 2024 16:04  
 Operator : MD/SY  
 Sample : P4804-17  
 Misc : 25mL/MSVOA\_U/WATER  
 ALS Vial : 15 Sample Multiplier: 1

Instrument :  
 MSVOA\_U  
 ClientSampleId :  
 VHBLK001

Integration Parameters: rteint.p  
 Integrator: RTE  
 Smoothing : ON  
 Sampling : 1  
 Start Thrs: 0.1  
 Stop Thrs : 0  
 Filtering: 5  
 Min Area: 3 % of largest Peak  
 Max Peaks: 100  
 Peak Location: TOP

If leading or trailing edge < 100 prefer < Baseline drop else tangent >  
 Peak separation: 5

Method : Z:\voasrv\HPCHEM1\MSVOA\_U\Method\SFAMUTR112024WMA.M  
 Title : TRACE VOA SFAM1.0

Signal : TIC: VU061868.D\data.ms

peak #	R.T. min	first scan	max scan	last scan	PK TY	peak height	corr. area	corr. % max.	% of total
1	1.596	86	95	108	rBV	78071	90946	14.64%	1.911%
2	1.907	184	192	209	rBV	59893	80940	13.03%	1.701%
3	2.560	383	395	412	rBV	123519	201367	32.41%	4.232%
4	3.039	534	544	562	rBB2	9425	17804	2.87%	0.374%
5	3.695	735	748	762	rBV6	6288	14228	2.29%	0.299%
6	4.631	1028	1039	1074	rBV	67227	186875	30.08%	3.927%
7	5.052	1152	1170	1202	rBV	106480	238765	38.43%	5.018%
8	5.718	1357	1377	1396	rBV2	212431	550207	88.57%	11.563%
9	6.242	1527	1540	1570	rBV	216202	426644	68.68%	8.966%
10	6.682	1663	1677	1706	rVB	130494	260954	42.01%	5.484%
11	7.560	1939	1950	1976	rBV2	55922	104541	16.83%	2.197%
12	7.891	2041	2053	2078	rBV	249613	448755	72.24%	9.431%
13	8.174	2131	2141	2162	rBV	35364	64937	10.45%	1.365%
14	8.631	2270	2283	2322	rBV2	242275	536722	86.40%	11.279%
15	9.409	2513	2525	2562	rBV	348531	621218	100.00%	13.055%
16	10.746	2927	2941	2960	rBV	90014	150224	24.18%	3.157%
17	11.807	3258	3271	3301	rBV	249594	426265	68.62%	8.958%
18	12.187	3376	3389	3408	rBV	196645	337148	54.27%	7.085%

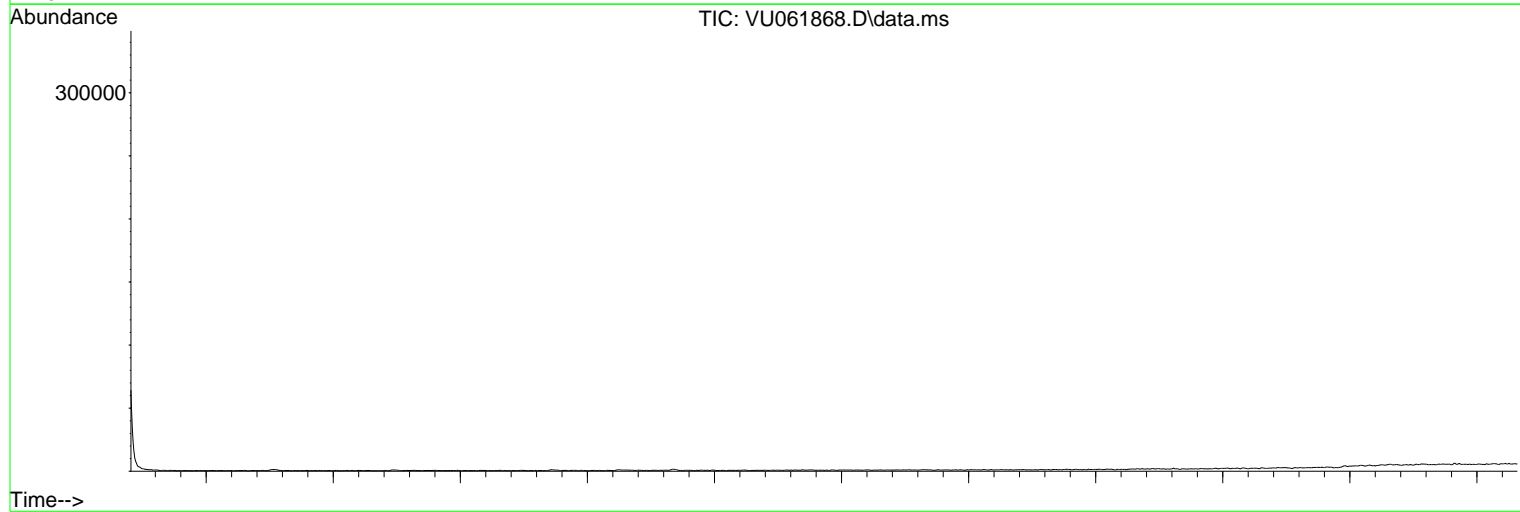
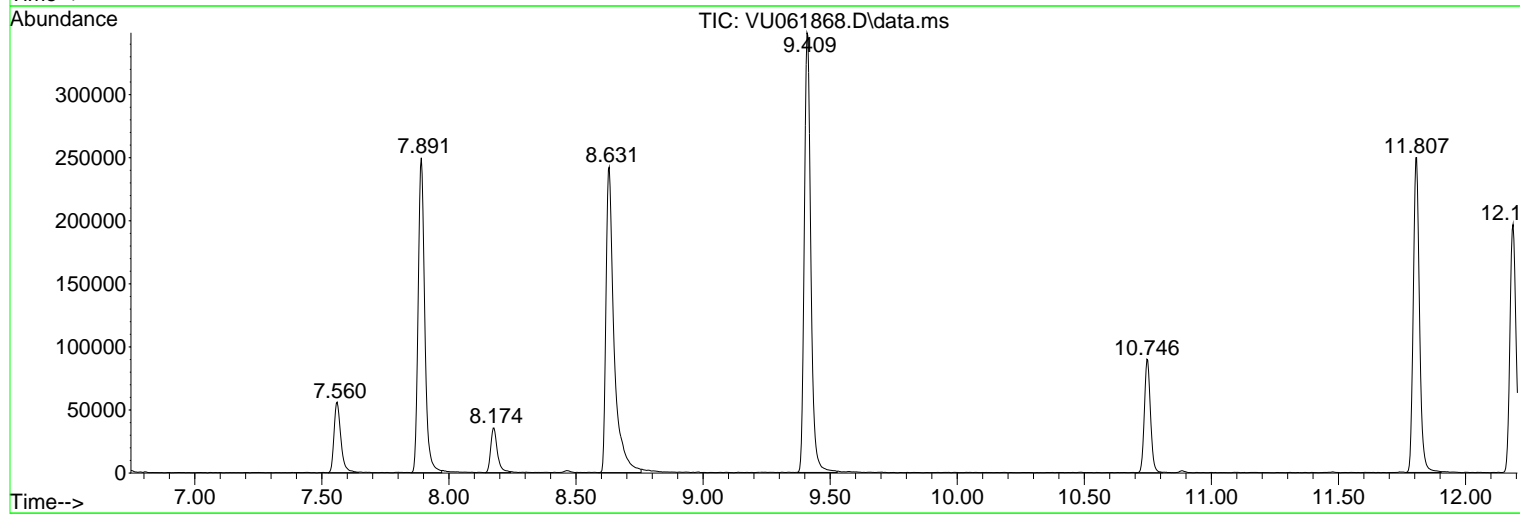
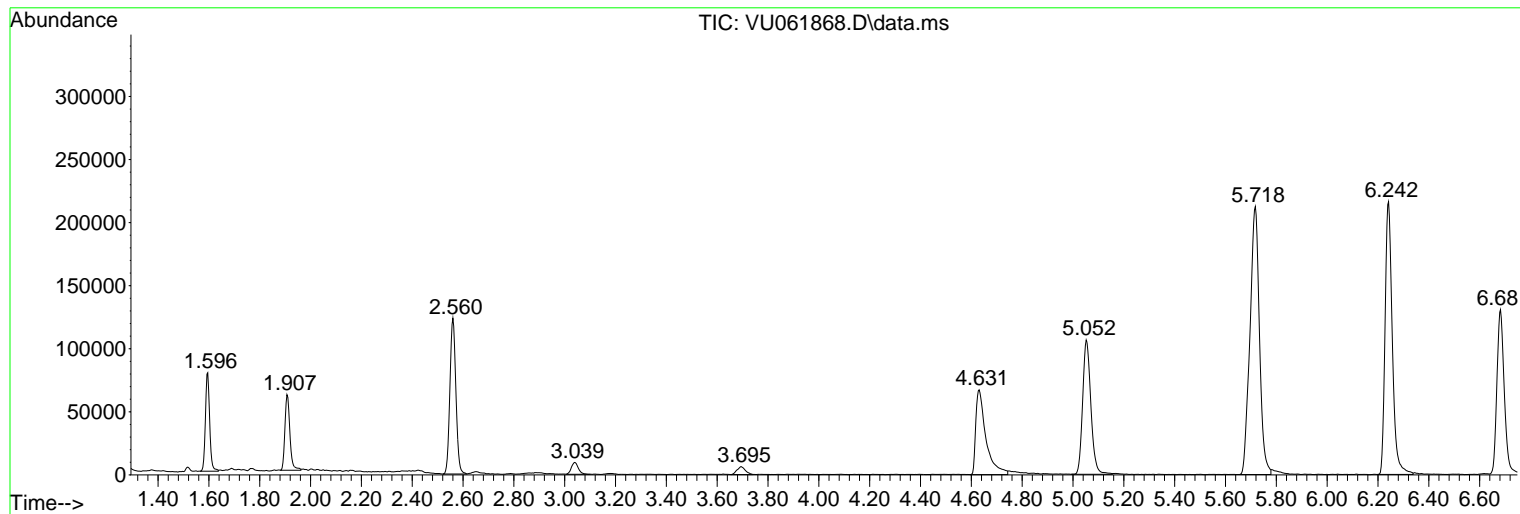
Sum of corrected areas: 4758540

Data Path : Z:\voasrv\HPCHEM1\MSVOA\_U\Data\VU112024\  
Data File : VU061868.D  
Acq On : 20 Nov 2024 16:04  
Operator : MD/SY  
Sample : P4804-17  
Misc : 25mL/MSVOA\_U/WATER  
ALS Vial : 15 Sample Multiplier: 1

Instrument :  
MSVOA\_U  
ClientSampleId :  
VHBLK001

Quant Method : Z:\voasrv\HPCHEM1\MSVOA\_U\Method\SFAMUTR112024WMA.M  
Quant Title : TRACE VOA SFAM1.0

TIC Library : C:\Database\NIST20.L  
TIC Integration Parameters: LSCINT.P



Data Path : Z:\voasrv\HPCHEM1\MSVOA\_U\Data\VU112024\  
Data File : VU061868.D  
Acq On : 20 Nov 2024 16:04  
Operator : MD/SY  
Sample : P4804-17  
Misc : 25mL/MSVOA\_U/WATER  
ALS Vial : 15 Sample Multiplier: 1

Instrument :  
MSVOA\_U  
ClientSampleId :  
VHBLK001

Quant Method : Z:\voasrv\HPCHEM1\MSVOA\_U\Method\SFAMUTR112024WMA.M  
Quant Title : TRACE VOA SFAM1.0

TIC Library : C:\Database\NIST20.L  
TIC Integration Parameters: LSCINT.P

No Library Search Compounds Detected

\*\*\*\*\*

Data Path : Z:\voasrv\HPCHEM1\MSVOA\_U\Data\VU112024\  
Data File : VU061868.D  
Acq On : 20 Nov 2024 16:04  
Operator : MD/SY  
Sample : P4804-17  
Misc : 25mL/MSVOA\_U/WATER  
ALS Vial : 15 Sample Multiplier: 1

Instrument :  
MSVOA\_U  
ClientSampleId :  
VHBLK001

Quant Method : Z:\voasrv\HPCHEM1\MSVOA\_U\Method\SFAMUTR112024WMA.M  
Quant Title : TRACE VOA SFAM1.0

TIC Library : C:\Database\NIST20.L  
TIC Integration Parameters: LSCINT.P

TIC Top Hit name	RT	EstConc	Units	Response	#	RT	Resp	Conc
------------------	----	---------	-------	----------	---	----	------	------

-----