

Data Path : Z:\voasrv\HPCHEM1\MSVOA_U\Data\VU112224\
 Data File : VU061980.D
 Acq On : 22 Nov 2024 18:31
 Operator : MD/SY
 Sample : P4903-07
 Misc : 25mL/MSVOA_U/WATER
 ALS Vial : 26 Sample Multiplier: 1

Instrument :
 MSVOA_U
 ClientSampleId :
 BG403

Quant Time: Nov 22 22:48:17 2024
 Quant Method : Z:\voasrv\HPCHEM1\MSVOA_U\Method\SFAMUTR112024WMA.M
 Quant Title : TRACE VOA SFAM1.0
 QLast Update : Fri Nov 22 22:40:46 2024
 Response via : Initial Calibration

Compound	R.T.	QIon	Response	Conc	Units	Dev(Min)

Internal Standards						
1) 1,4-Difluorobenzene	6.242	114	133314	5.000	ug/L	0.00
28) Chlorobenzene-d5	9.409	117	126336	5.000	ug/L	0.00
58) 1,4-Dichlorobenzene-d4	11.804	152	54560	5.000	ug/L	0.00
System Monitoring Compounds						
4) Vinyl Chloride-d3	1.596	65	33349	5.100	ug/L	0.00
Spiked Amount	5.000	Range 40 - 130	Recovery	=	102.000%	
7) Chloroethane-d5	1.907	69	26002	4.495	ug/L	0.00
Spiked Amount	5.000	Range 65 - 130	Recovery	=	89.800%	
11) 1,1-Dichloroethene-d2	2.560	65	15481	5.926	ug/L	0.00
Spiked Amount	5.000	Range 60 - 125	Recovery	=	118.600%	
20) 2-Butanone-d5	4.618	46	78776	38.362	ug/L	0.00
Spiked Amount	50.000	Range 40 - 130	Recovery	=	76.720%	
24) Chloroform-d	5.052	84	70503	4.419	ug/L	0.00
Spiked Amount	5.000	Range 70 - 125	Recovery	=	88.400%	
26) 1,2-Dichloroethane-d4	5.692	65	36628	4.461	ug/L	0.00
Spiked Amount	5.000	Range 70 - 130	Recovery	=	89.200%	
32) Benzene-d6	5.718	84	138696	5.635	ug/L	0.00
Spiked Amount	5.000	Range 70 - 125	Recovery	=	112.600%	
36) 1,2-Dichloropropane-d6	6.679	67	44420	5.311	ug/L	0.00
Spiked Amount	5.000	Range 60 - 140	Recovery	=	106.200%	
41) Toluene-d8	7.891	98	121894	5.937	ug/L	0.00
Spiked Amount	5.000	Range 70 - 130	Recovery	=	118.800%	
43) trans-1,3-Dichloroprop...	8.174	79	14452	4.667	ug/L	0.00
Spiked Amount	5.000	Range 55 - 130	Recovery	=	93.400%	
46) 2-Hexanone-d5	8.627	63	52708	37.295	ug/L	0.00
Spiked Amount	50.000	Range 45 - 130	Recovery	=	74.580%	
56) 1,1,2,2-Tetrachloroeth...	10.746	84	32877	3.934	ug/L	0.00
Spiked Amount	5.000	Range 65 - 120	Recovery	=	78.600%	
66) 1,2-Dichlorobenzene-d4	12.184	152	41172	5.103	ug/L	0.00
Spiked Amount	5.000	Range 80 - 120	Recovery	=	102.000%	

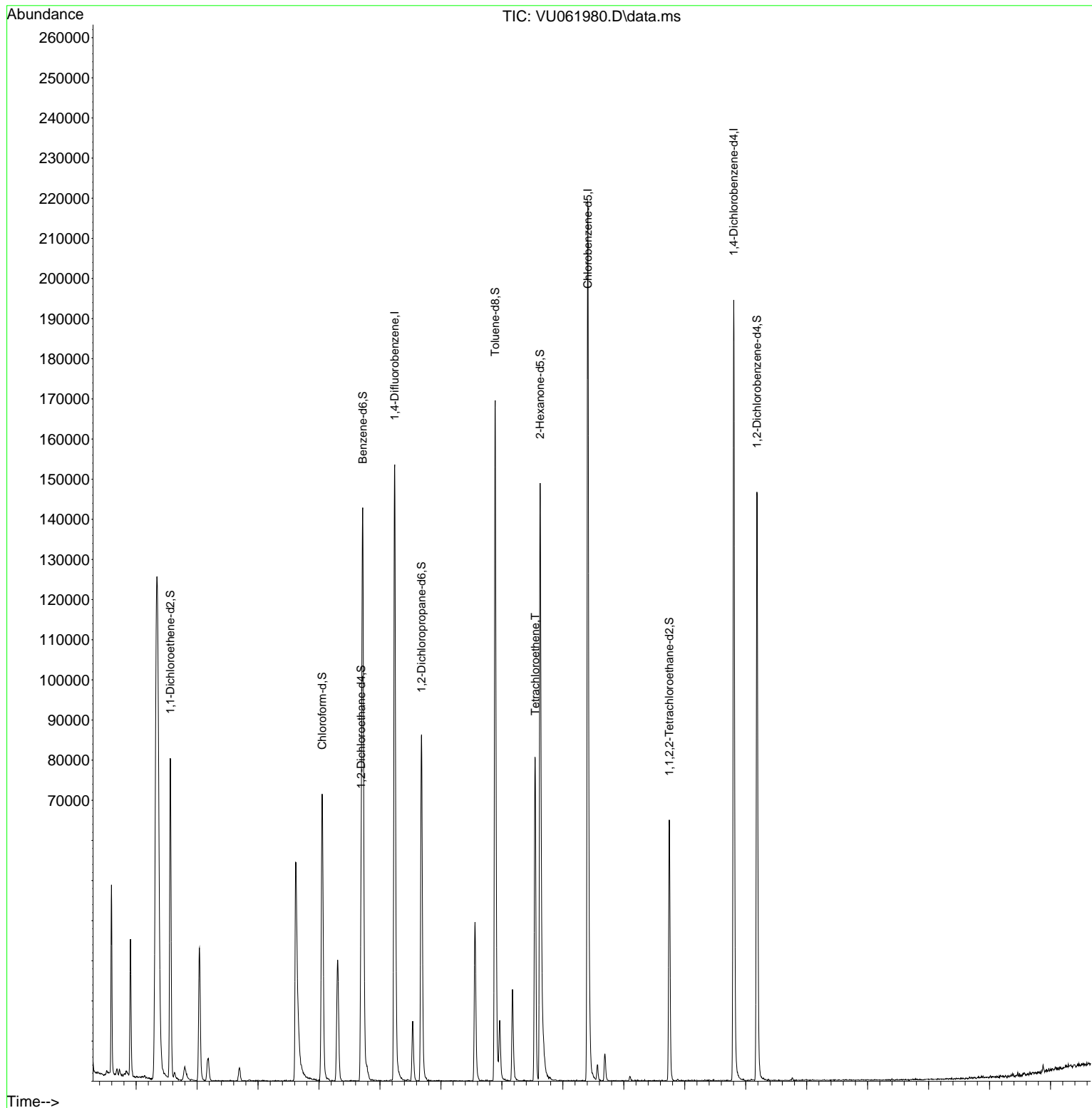
Target Compounds						Qvalue
16) Methylene chloride	3.039	84	17760	1.654	ug/L	96
22) cis-1,2-Dichloroethene	4.663	96	1304	0.123	ug/L	88
29) 1,1,1-Trichloroethane	5.306	97	23072	1.584	ug/L	94
34) Trichloroethene	6.537	95	5728	0.563	ug/L	95
42) Toluene	7.965	91	11648	0.291	ug/L	96
47) Tetrachloroethene	8.547	164	18457	2.492	ug/L	95
51) Chlorobenzene	9.441	112	5201	0.190	ug/L	94
53) m,p-Xylene	9.688	106	2276	0.135	ug/L	88

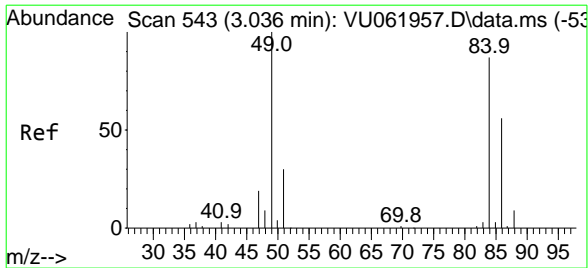
(#) = qualifier out of range (m) = manual integration (+) = signals summed

Data Path : Z:\voasrv\HPCHEM1\MSVOA_U\Data\VU112224\
 Data File : VU061980.D
 Acq On : 22 Nov 2024 18:31
 Operator : MD/SY
 Sample : P4903-07
 Misc : 25mL/MSVOA_U/WATER
 ALS Vial : 26 Sample Multiplier: 1

Instrument :
 MSVOA_U
 ClientSampleId :
 BG403

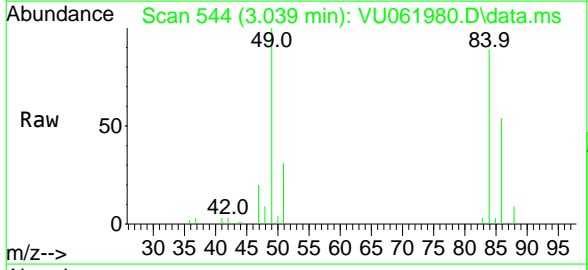
Quant Time: Nov 22 22:48:17 2024
 Quant Method : Z:\voasrv\HPCHEM1\MSVOA_U\Method\SFAMUTR112024WMA.M
 Quant Title : TRACE VOA SFAM1.0
 QLast Update : Fri Nov 22 22:40:46 2024
 Response via : Initial Calibration



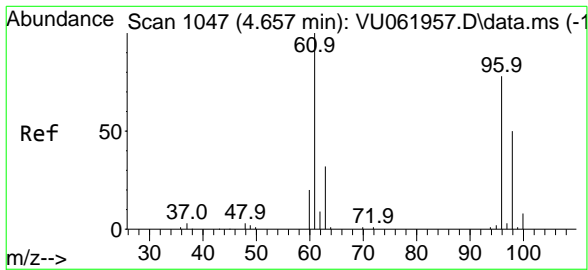
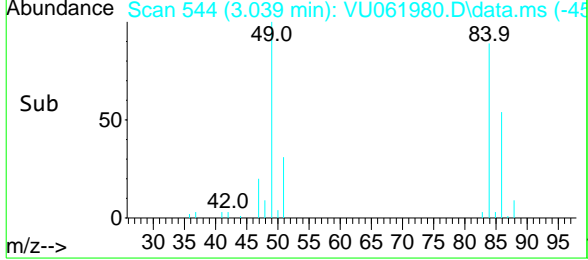
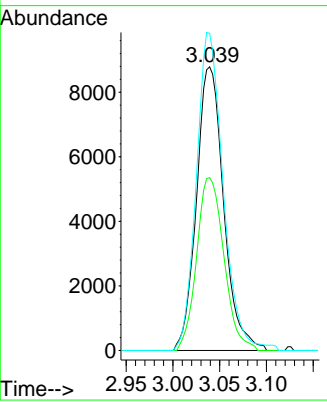


#16
 Methylene chloride
 Concen: 1.654 ug/L
 RT: 3.039 min Scan# 54
 Delta R.T. 0.003 min
 Lab File: VU061980.D
 Acq: 22 Nov 2024 18:31

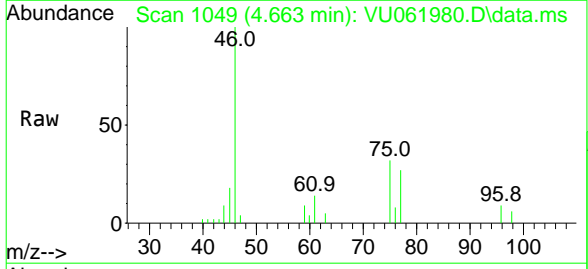
Instrument : MSVOA_U
 ClientSampleId : BG403



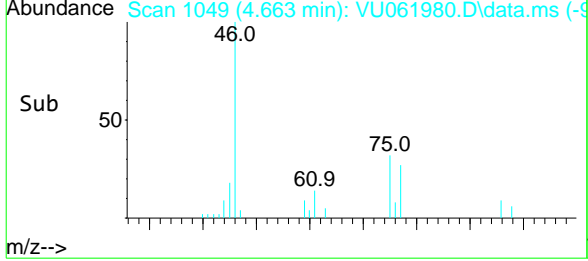
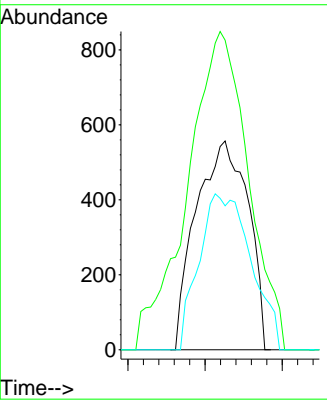
Tgt Ion	Ratio	Lower	Upper
84	100		
86	60.9	43.5	80.7
49	111.8	81.9	152.1

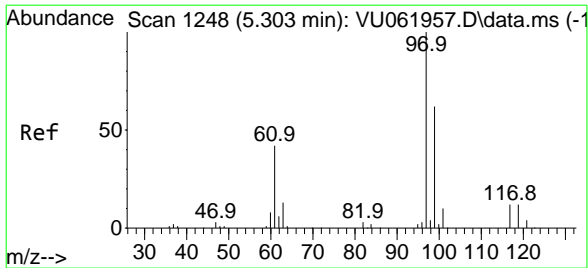


#22
 cis-1,2-Dichloroethene
 Concen: 0.123 ug/L
 RT: 4.663 min Scan# 1049
 Delta R.T. 0.006 min
 Lab File: VU061980.D
 Acq: 22 Nov 2024 18:31



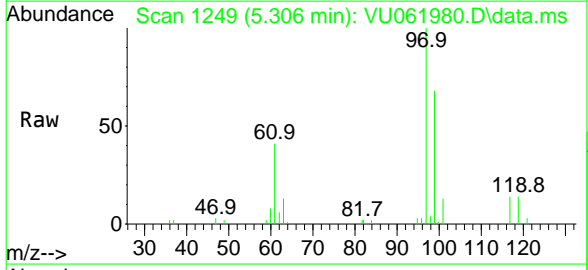
Tgt Ion	Ratio	Lower	Upper
96	100		
61	148.3	92.0	170.8
98	68.9	44.5	82.7



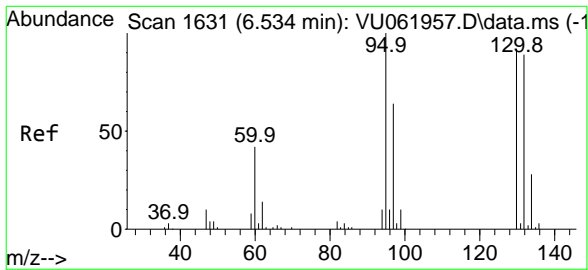
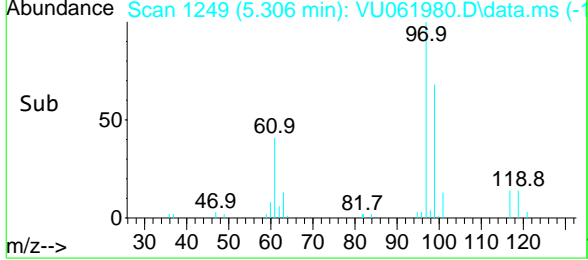
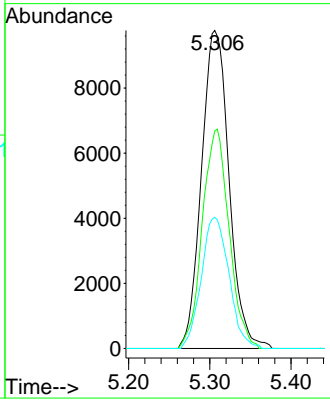


#29
 1,1,1-Trichloroethane
 Concen: 1.584 ug/L
 RT: 5.306 min Scan# 1249
 Delta R.T. 0.003 min
 Lab File: VU061980.D
 Acq: 22 Nov 2024 18:31

Instrument : MSVOA_U
 ClientSampleId : BG403

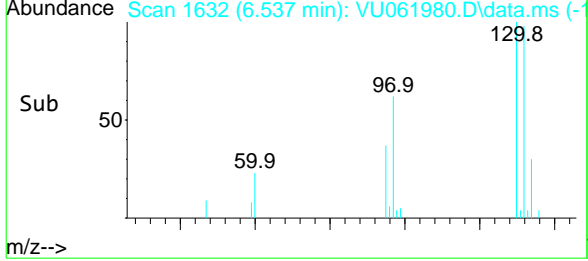
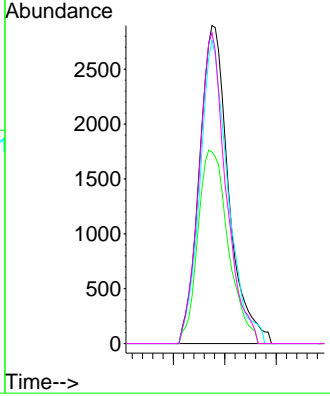
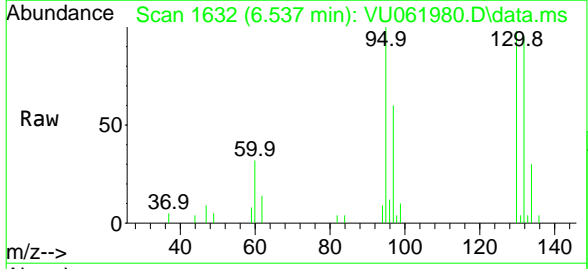


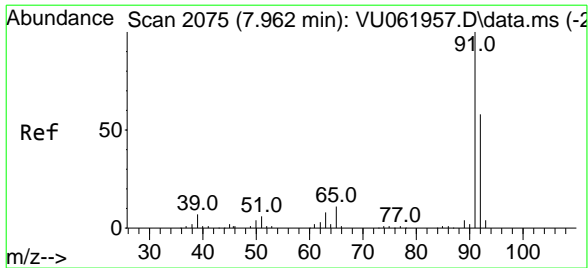
Tgt Ion	Resp	Lower	Upper
97	23072		
97	100		
99	67.0	51.4	77.2
61	41.4	37.8	56.6



#34
 Trichloroethene
 Concen: 0.563 ug/L
 RT: 6.537 min Scan# 1632
 Delta R.T. 0.003 min
 Lab File: VU061980.D
 Acq: 22 Nov 2024 18:31

Tgt Ion	Resp	Lower	Upper
95	5728		
95	100		
97	60.2	45.9	85.3
132	95.3	63.8	118.4
130	97.7	65.5	121.7

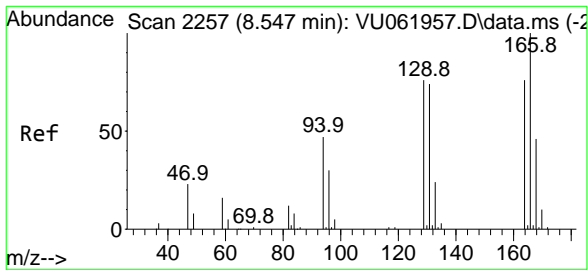
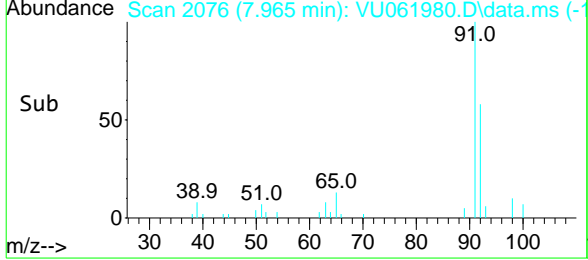
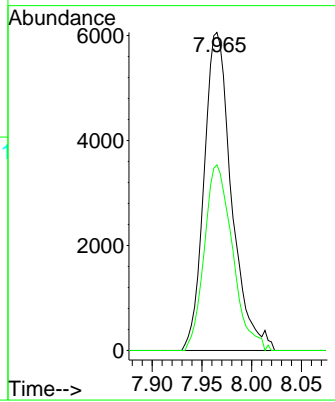
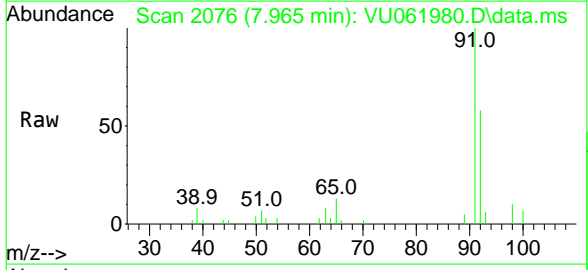




#42
 Toluene
 Concen: 0.291 ug/L
 RT: 7.965 min Scan# 2076
 Delta R.T. 0.003 min
 Lab File: VU061980.D
 Acq: 22 Nov 2024 18:31

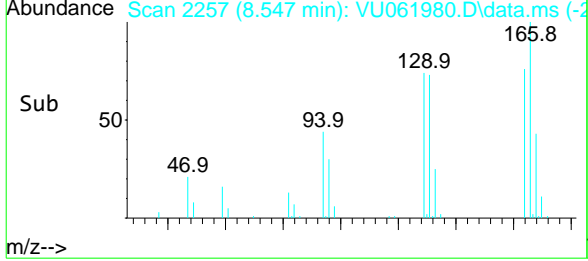
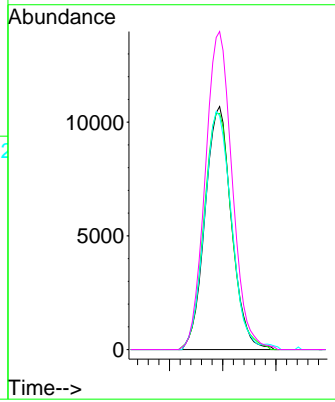
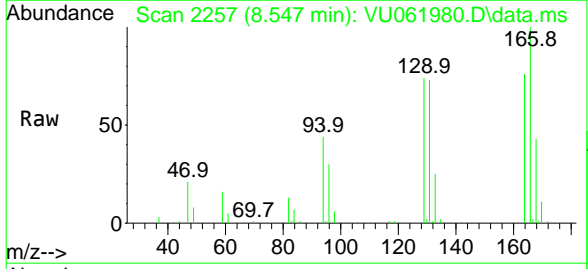
Instrument : MSVOA_U
 ClientSampleId : BG403

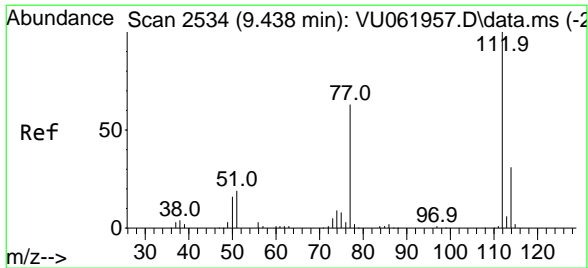
Tgt Ion: 91 Resp: 11648
 Ion Ratio Lower Upper
 91 100
 92 58.4 39.0 72.4



#47
 Tetrachloroethene
 Concen: 2.492 ug/L
 RT: 8.547 min Scan# 2257
 Delta R.T. 0.000 min
 Lab File: VU061980.D
 Acq: 22 Nov 2024 18:31

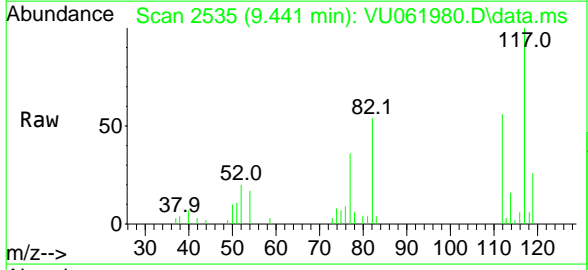
Tgt Ion: 164 Resp: 18457
 Ion Ratio Lower Upper
 164 100
 129 97.2 73.2 136.0
 131 96.1 72.3 134.3
 166 130.9 90.2 167.4





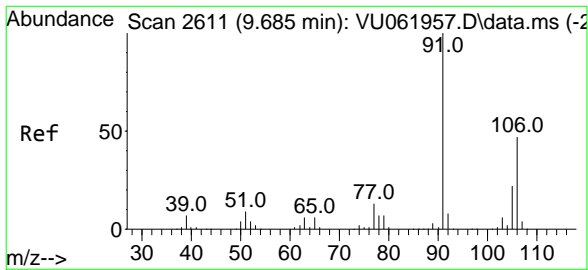
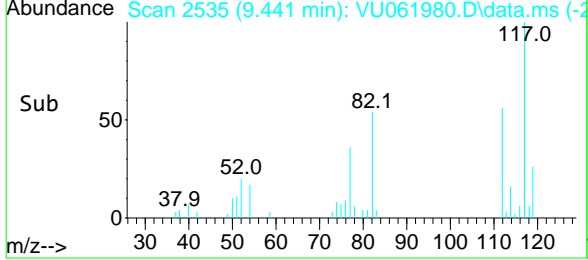
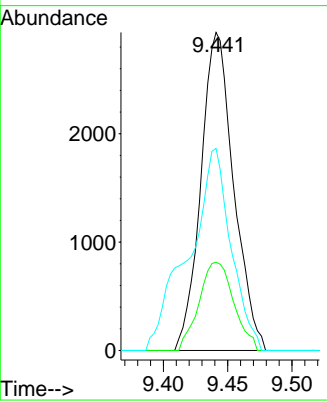
#51
 Chlorobenzene
 Concen: 0.190 ug/L
 RT: 9.441 min Scan# 25
 Delta R.T. 0.003 min
 Lab File: VU061980.D
 Acq: 22 Nov 2024 18:31

Instrument :
 MSVOA_U
 ClientSampleId :
 BG403



Tgt Ion:112 Resp: 5201

Ion	Ratio	Lower	Upper
112	100		
114	26.4	23.0	42.6
77	60.4	50.5	75.7



#53
 m,p-Xylene
 Concen: 0.135 ug/L
 RT: 9.688 min Scan# 2612
 Delta R.T. 0.003 min
 Lab File: VU061980.D
 Acq: 22 Nov 2024 18:31

Tgt Ion:106 Resp: 2276

Ion	Ratio	Lower	Upper
106	100		
91	228.8	147.6	274.0

