

Data Path : Z:\voasrv\HPCHEM1\MSVOA_U\Data\VU121224\
 Data File : VU062295.D
 Acq On : 12 Dec 2024 18:08
 Operator : MD/SY
 Sample : P5253-12MSD
 Misc : 25mL/MSVOA_U/WATER
 ALS Vial : 24 Sample Multiplier: 1

Instrument :
 MSVOA_U
 ClientSampleId :
 F7J35MSD

Quant Time: Dec 13 00:20:25 2024
 Quant Method : Z:\voasrv\HPCHEM1\MSVOA_U\Method\SFAMUTR120924WMA.M
 Quant Title : TRACE VOA SFAM1.0
 QLast Update : Fri Dec 13 00:13:55 2024
 Response via : Initial Calibration

Compound	R.T.	QIon	Response	Conc	Units	Dev(Min)
Internal Standards						
1) 1,4-Difluorobenzene	6.242	114	97257	5.000	ug/L	0.00
28) Chlorobenzene-d5	9.409	117	93092	5.000	ug/L	0.00
58) 1,4-Dichlorobenzene-d4	11.804	152	48600	5.000	ug/L	0.00
System Monitoring Compounds						
4) Vinyl Chloride-d3	1.595	65	22586	3.443	ug/L	0.00
Spiked Amount	5.000	Range 40 - 130	Recovery	=	68.800%	
7) Chloroethane-d5	1.907	69	18670	4.001	ug/L	0.00
Spiked Amount	5.000	Range 65 - 130	Recovery	=	80.000%	
11) 1,1-Dichloroethene-d2	2.560	65	11273	3.612	ug/L	0.00
Spiked Amount	5.000	Range 60 - 125	Recovery	=	72.200%	
20) 2-Butanone-d5	4.624	46	63787	50.736	ug/L	0.00
Spiked Amount	50.000	Range 40 - 130	Recovery	=	101.480%	
24) Chloroform-d	5.052	84	64910	4.572	ug/L	0.00
Spiked Amount	5.000	Range 70 - 125	Recovery	=	91.400%	
26) 1,2-Dichloroethane-d4	5.692	65	33566	4.808	ug/L	0.00
Spiked Amount	5.000	Range 70 - 130	Recovery	=	96.200%	
32) Benzene-d6	5.717	84	110647	4.127	ug/L	0.00
Spiked Amount	5.000	Range 70 - 125	Recovery	=	82.600%	
36) 1,2-Dichloropropane-d6	6.679	67	32051	4.178	ug/L	0.00
Spiked Amount	5.000	Range 60 - 140	Recovery	=	83.600%	
41) Toluene-d8	7.888	98	102840	4.060	ug/L	0.00
Spiked Amount	5.000	Range 70 - 130	Recovery	=	81.200%	
43) trans-1,3-Dichloroprop...	8.174	79	14387	4.261	ug/L	0.00
Spiked Amount	5.000	Range 55 - 130	Recovery	=	85.200%	
46) 2-Hexanone-d5	8.624	63	49548	48.637	ug/L	0.00
Spiked Amount	50.000	Range 45 - 130	Recovery	=	97.280%	
56) 1,1,2,2-Tetrachloroeth...	10.746	84	28309	4.742	ug/L	0.00
Spiked Amount	5.000	Range 65 - 120	Recovery	=	94.800%	
66) 1,2-Dichlorobenzene-d4	12.183	152	40255	4.495	ug/L	0.00
Spiked Amount	5.000	Range 80 - 120	Recovery	=	89.800%	
Target Compounds						
2) Dichlorodifluoromethane	1.383	85	41935	4.603	ug/L	99
3) Chloromethane	1.515	50	34573	4.841	ug/L	98
5) Vinyl chloride	1.599	62	37100	4.990	ug/L	96
6) Bromomethane	1.853	94	22274	4.494	ug/L	94
8) Chloroethane	1.930	64	20655	4.960	ug/L	97
9) Trichlorofluoromethane	2.132	101	65700	5.091	ug/L	97
10) 1,1,2-Trichloro-1,2,2-...	2.573	101	32142	4.576	ug/L	91
12) 1,1-Dichloroethene	2.573	96	34027	5.182	ug/L	96
13) Acetone	2.640	43	45643	53.320	ug/L	94
14) Carbon disulfide	2.785	76	99483	4.791	ug/L	100
15) Methyl Acetate	2.955	43	10059	4.689	ug/L #	90
16) Methylene chloride	3.036	84	35911	5.210	ug/L	93
17) Methyl tert-butyl Ether	3.354	73	84272	5.152	ug/L	97
18) trans-1,2-Dichloroethene	3.345	96	34278	5.081	ug/L	91
19) 1,1-Dichloroethane	3.856	63	62539	5.057	ug/L	99
21) 2-Butanone	4.705	43	67102	53.978	ug/L	92
22) cis-1,2-Dichloroethene	4.653	96	38770	5.127	ug/L	95
23) Bromochloromethane	4.965	128	17645	5.323	ug/L #	82
25) Chloroform	5.078	83	72674	5.217	ug/L	98

Data Path : Z:\voasrv\HPCHEM1\MSVOA_U\Data\VU121224\
 Data File : VU062295.D
 Acq On : 12 Dec 2024 18:08
 Operator : MD/SY
 Sample : P5253-12MSD
 Misc : 25mL/MSVOA_U/WATER
 ALS Vial : 24 Sample Multiplier: 1

Instrument :
 MSVOA_U
 ClientSampleId :
 F7J35MSD

Quant Time: Dec 13 00:20:25 2024
 Quant Method : Z:\voasrv\HPCHEM1\MSVOA_U\Method\SFAMUTR120924WMA.M
 Quant Title : TRACE VOA SFAM1.0
 QLast Update : Fri Dec 13 00:13:55 2024
 Response via : Initial Calibration

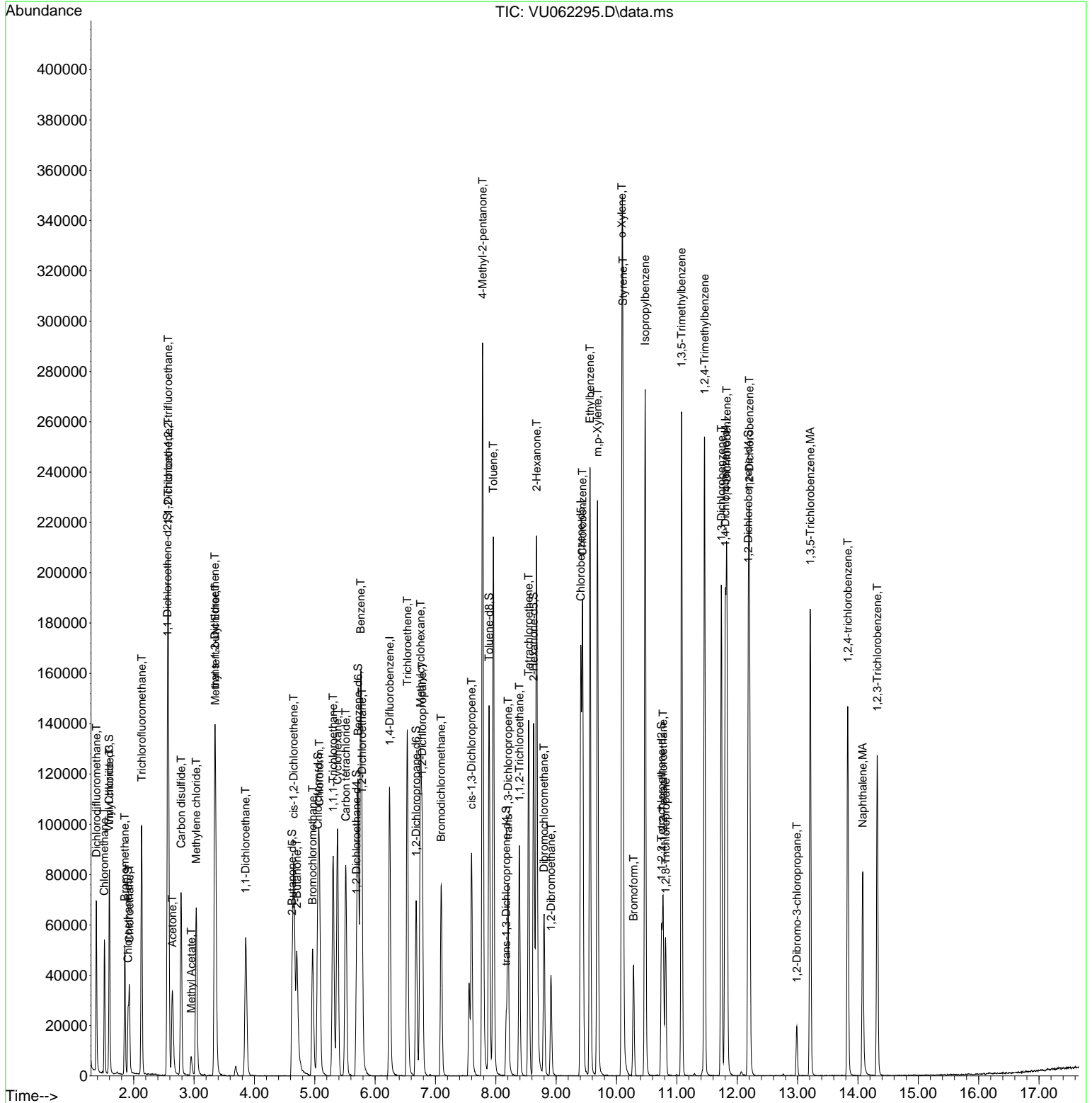
Compound	R.T.	QIon	Response	Conc	Units	Dev(Min)
27) 1,2-Dichloroethane	5.785	62	47543	5.371	ug/L	98
29) 1,1,1-Trichloroethane	5.306	97	68028	5.195	ug/L	94
30) Cyclohexane	5.377	56	46303	4.360	ug/L	90
31) Carbon tetrachloride	5.515	117	61037	5.083	ug/L	99
33) Benzene	5.762	78	145508	5.044	ug/L	100
34) Trichloroethene	6.534	95	49292	6.032	ug/L	96
35) Methylcyclohexane	6.753	83	51083	4.216	ug/L	96
37) 1,2-Dichloropropane	6.782	63	35841	5.102	ug/L	99
38) Bromodichloromethane	7.094	83	52758	5.323	ug/L	98
39) cis-1,3-Dichloropropene	7.598	75	54304	4.822	ug/L	96
40) 4-Methyl-2-pentanone	7.782	43	172655	52.437	ug/L #	93
42) Toluene	7.959	91	160276	5.152	ug/L	97
44) trans-1,3-Dichloropropene	8.203	75	46339	5.039	ug/L	97
45) 1,1,2-Trichloroethane	8.389	97	28741	5.419	ug/L	97
47) Tetrachloroethene	8.544	164	31565	5.003	ug/L	96
48) 2-Hexanone	8.676	43	127512	52.402	ug/L #	91
49) Dibromochloromethane	8.798	129	33775	5.271	ug/L	94
50) 1,2-Dibromoethane	8.913	107	27269	5.351	ug/L #	99
51) Chlorobenzene	9.438	112	102547	5.145	ug/L	98
52) Ethylbenzene	9.560	91	174249	4.996	ug/L	99
53) m,p-Xylene	9.685	106	65686	5.101	ug/L	99
54) o-Xylene	10.090	106	66004	5.270	ug/L	97
55) Styrene	10.106	104	108569	5.259	ug/L	97
57) 1,1,2,2-Tetrachloroethane	10.772	83	32729	5.302	ug/L #	99
59) Bromoform	10.283	173	20518	5.372	ug/L	97
60) Isopropylbenzene	10.476	105	179123	5.102	ug/L	100
61) 1,2,3-Trichloropropane	10.814	75	23341	5.194	ug/L	95
62) 1,3,5-Trimethylbenzene	11.077	105	146171	4.920	ug/L	100
63) 1,2,4-Trimethylbenzene	11.460	105	145138	4.986	ug/L	99
64) 1,3-Dichlorobenzene	11.736	146	81029	5.024	ug/L	97
65) 1,4-Dichlorobenzene	11.827	146	80364	4.949	ug/L	99
67) 1,2-Dichlorobenzene	12.203	146	77854	5.224	ug/L	94
68) 1,2-Dibromo-3-chloropr...	12.987	75	5792	5.909	ug/L	85
69) 1,3,5-Trichlorobenzene	13.209	180	58899	4.913	ug/L	99
70) 1,2,4-trichlorobenzene	13.833	180	46529	4.916	ug/L	98
71) Naphthalene	14.080	128	71581	5.036	ug/L	100
72) 1,2,3-Trichlorobenzene	14.322	180	40609	4.865	ug/L	98

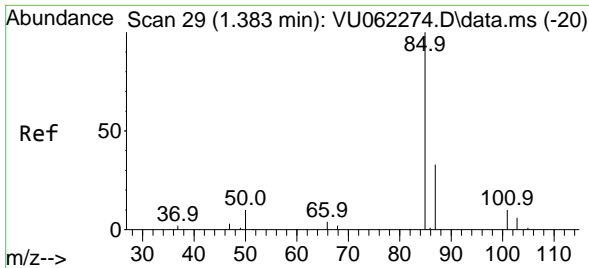
(#) = qualifier out of range (m) = manual integration (+) = signals summed

Data Path : Z:\voasrv\HPCHEM1\MSVOA_U\Data\VU121224\
 Data File : VU062295.D
 Acq On : 12 Dec 2024 18:08
 Operator : MD/SY
 Sample : P5253-12MSD
 Misc : 25mL/MSVOA_U/WATER
 ALS Vial : 24 Sample Multiplier: 1

Instrument :
 MSVOA_U
 ClientSampleId :
 F7J35MSD

Quant Time: Dec 13 00:20:25 2024
 Quant Method : Z:\voasrv\HPCHEM1\MSVOA_U\Method\SFAMUTR120924WMA.M
 Quant Title : TRACE VOA SFAM1.0
 QLast Update : Fri Dec 13 00:13:55 2024
 Response via : Initial Calibration

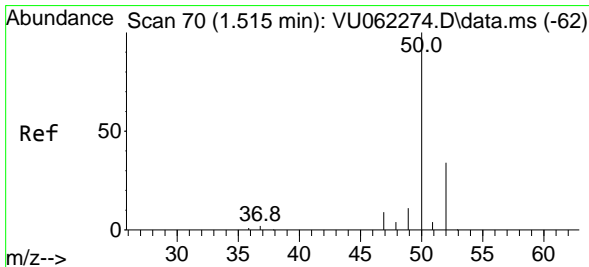
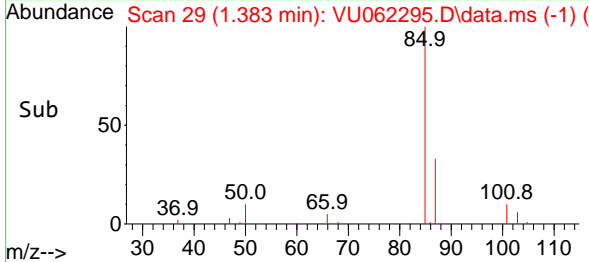
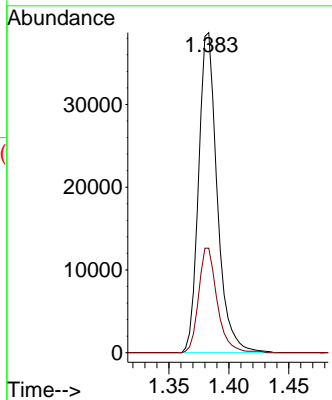
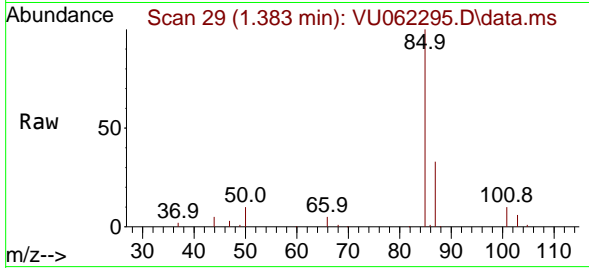




#2
 Dichlorodifluoromethane
 Concen: 4.603 ug/L
 RT: 1.383 min Scan# 29
 Delta R.T. 0.000 min
 Lab File: VU062295.D
 Acq: 12 Dec 2024 18:08

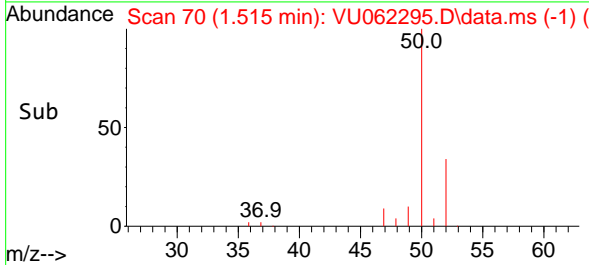
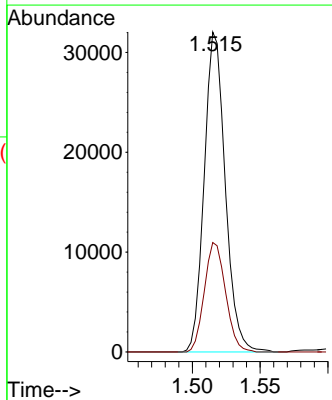
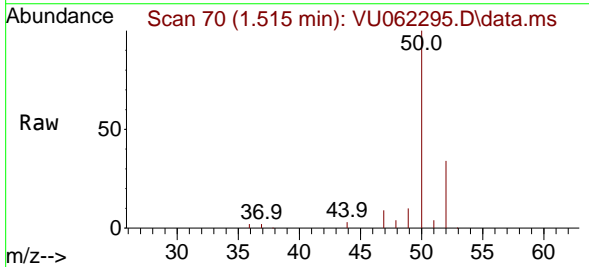
Instrument : MSVOA_U
 ClientSampleId : F7J35MSD

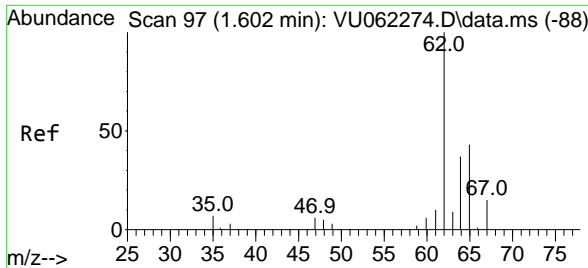
Tgt Ion: 85 Resp: 41935
 Ion Ratio Lower Upper
 85 100
 87 32.7 26.6 40.0



#3
 Chloromethane
 Concen: 4.841 ug/L
 RT: 1.515 min Scan# 70
 Delta R.T. 0.000 min
 Lab File: VU062295.D
 Acq: 12 Dec 2024 18:08

Tgt Ion: 50 Resp: 34573
 Ion Ratio Lower Upper
 50 100
 52 34.2 23.1 42.9

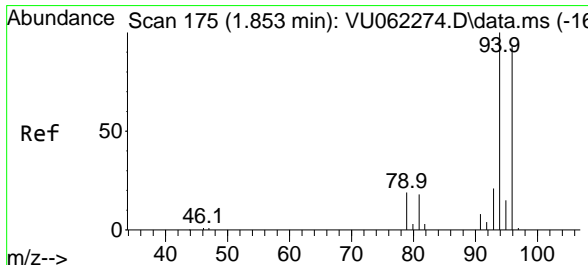
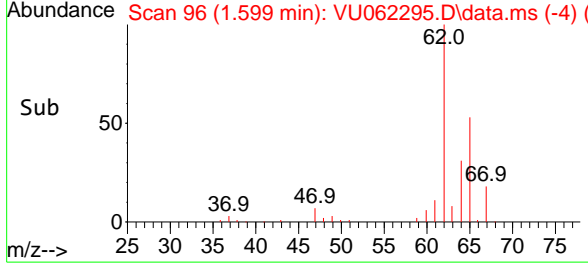
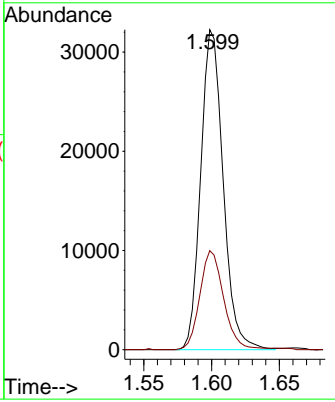
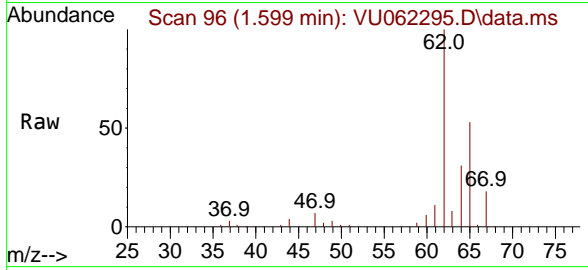




#5
 Vinyl chloride
 Concen: 4.990 ug/L
 RT: 1.599 min Scan# 90
 Delta R.T. -0.003 min
 Lab File: VU062295.D
 Acq: 12 Dec 2024 18:08

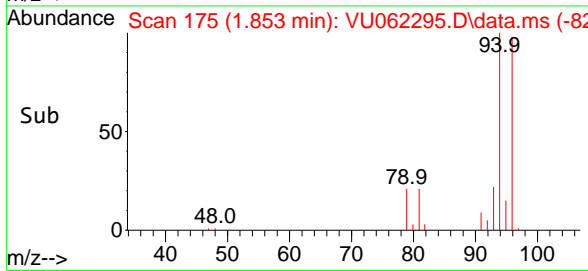
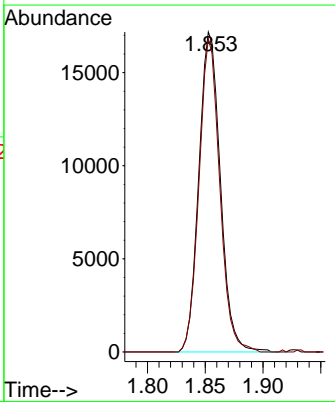
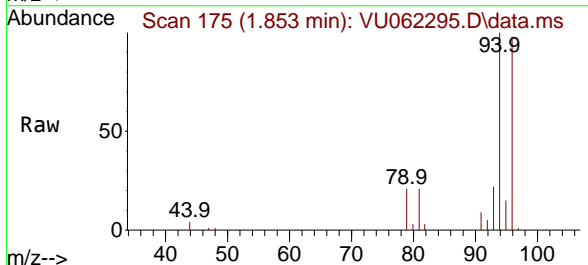
Instrument : MSVOA_U
 ClientSampleId : F7J35MSD

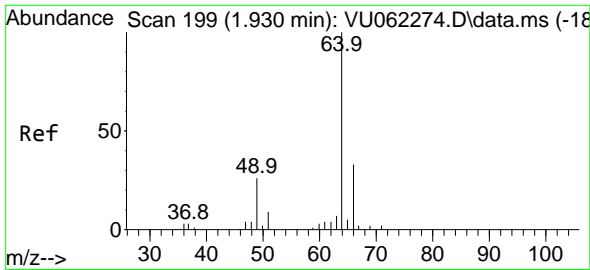
Tgt Ion: 62 Resp: 37100
 Ion Ratio Lower Upper
 62 100
 64 30.9 23.1 42.9



#6
 Bromomethane
 Concen: 4.494 ug/L
 RT: 1.853 min Scan# 175
 Delta R.T. 0.000 min
 Lab File: VU062295.D
 Acq: 12 Dec 2024 18:08

Tgt Ion: 94 Resp: 22274
 Ion Ratio Lower Upper
 94 100
 96 97.9 64.5 119.9

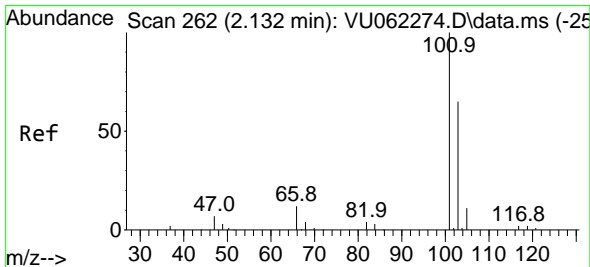
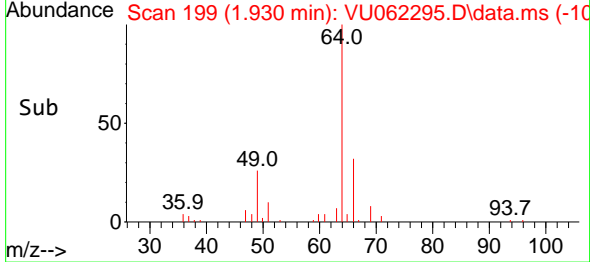
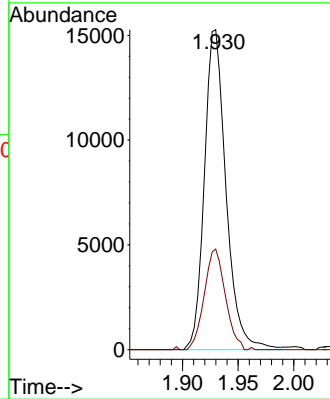
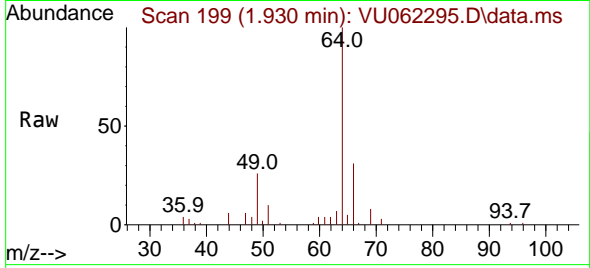




#8
 Chloroethane
 Concen: 4.960 ug/L
 RT: 1.930 min Scan# 199
 Delta R.T. 0.000 min
 Lab File: VU062295.D
 Acq: 12 Dec 2024 18:08

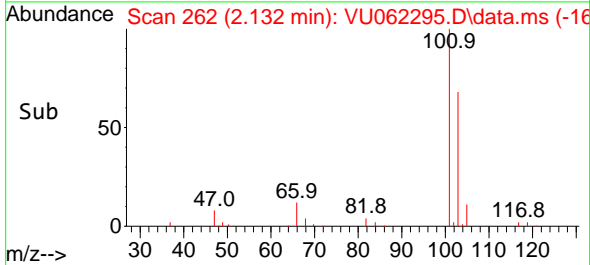
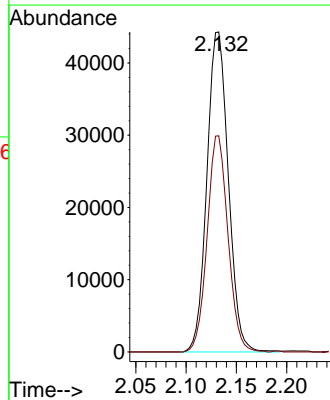
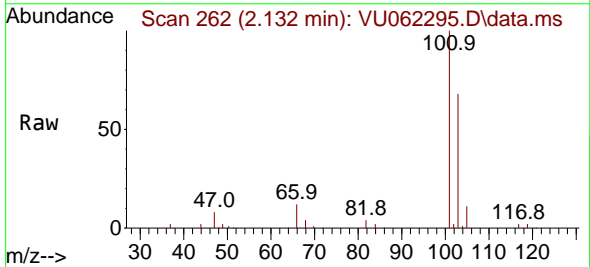
Instrument : MSVOA_U
 ClientSampleId : F7J35MSD

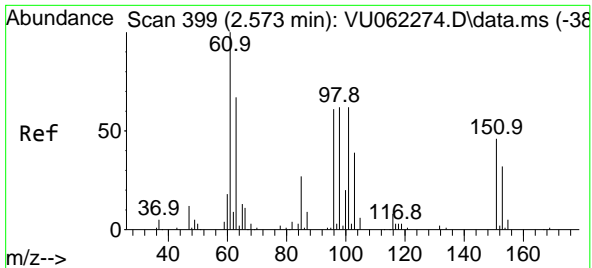
Tgt Ion: 64 Resp: 20655
 Ion Ratio Lower Upper
 64 100
 66 31.5 23.2 43.2



#9
 Trichlorofluoromethane
 Concen: 5.091 ug/L
 RT: 2.132 min Scan# 262
 Delta R.T. 0.000 min
 Lab File: VU062295.D
 Acq: 12 Dec 2024 18:08

Tgt Ion: 101 Resp: 65700
 Ion Ratio Lower Upper
 101 100
 103 65.6 50.6 75.8

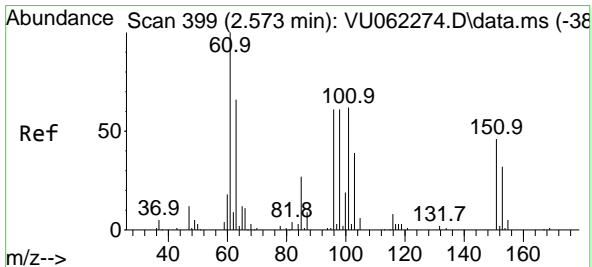
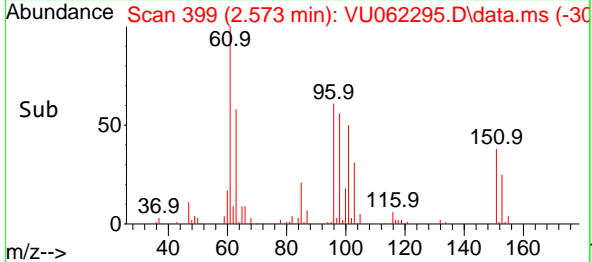
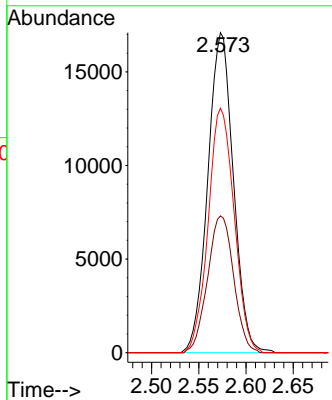
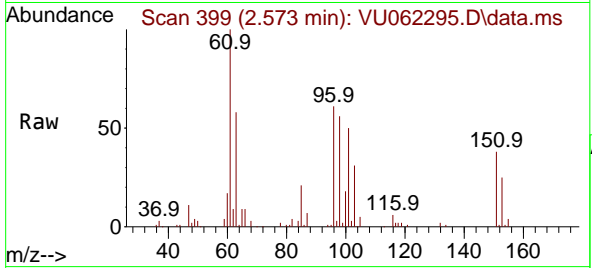




#10
 1,1,2-Trichloro-1,2,2-trifluoroethane
 Concen: 4.576 ug/L
 RT: 2.573 min Scan# 399
 Delta R.T. 0.000 min
 Lab File: VU062295.D
 Acq: 12 Dec 2024 18:08

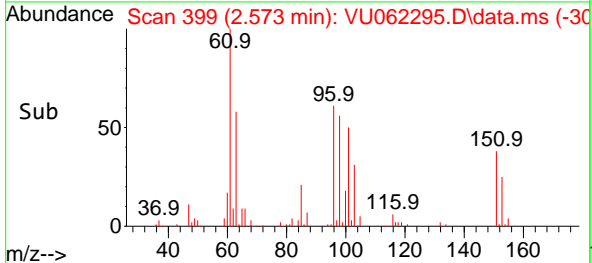
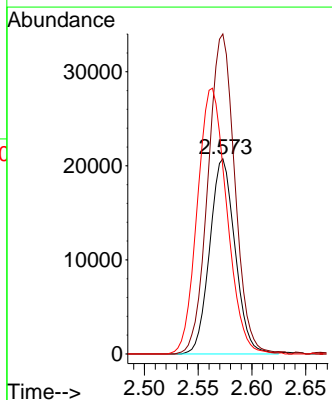
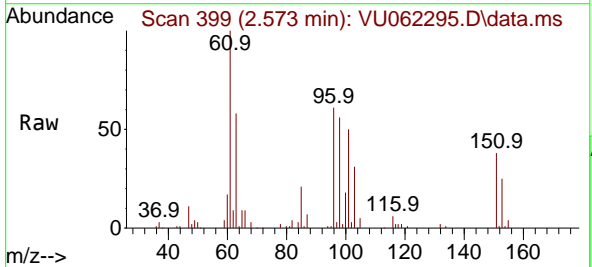
Instrument :
 MSVOA_U
 ClientSampleId :
 F7J35MSD

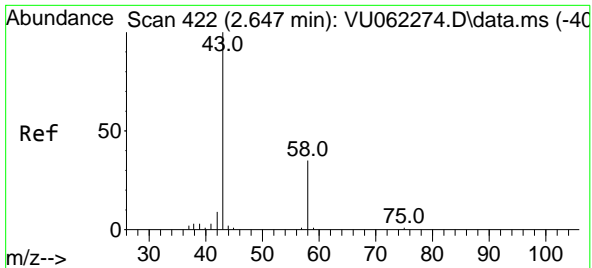
Tgt Ion	Resp	Lower	Upper
101	32142		
101	100		
85	43.5	38.0	57.0
151	77.6	55.3	82.9



#12
 1,1-Dichloroethene
 Concen: 5.182 ug/L
 RT: 2.573 min Scan# 399
 Delta R.T. 0.000 min
 Lab File: VU062295.D
 Acq: 12 Dec 2024 18:08

Tgt Ion	Resp	Lower	Upper
96	34027		
96	100		
61	163.9	119.6	222.2
63	95.5	65.0	120.6

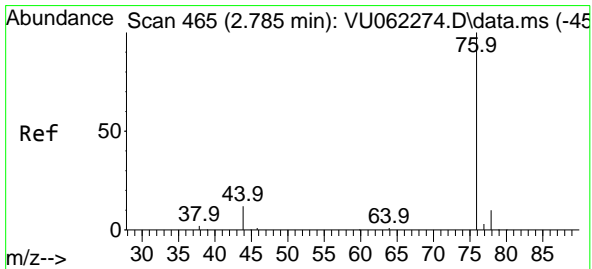
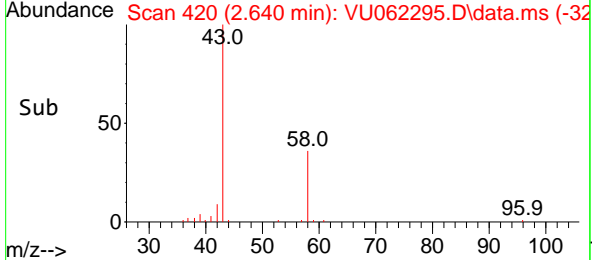
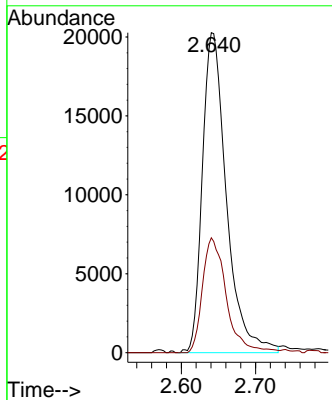
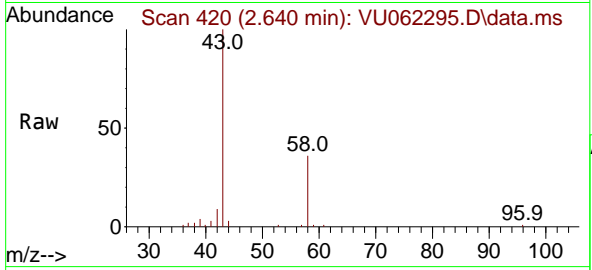




#13
 Acetone
 Concen: 53.320 ug/L
 RT: 2.640 min Scan# 41
 Delta R.T. -0.006 min
 Lab File: VU062295.D
 Acq: 12 Dec 2024 18:08

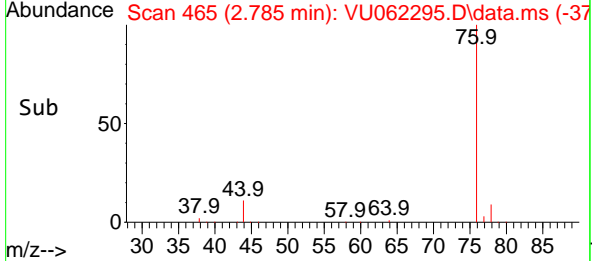
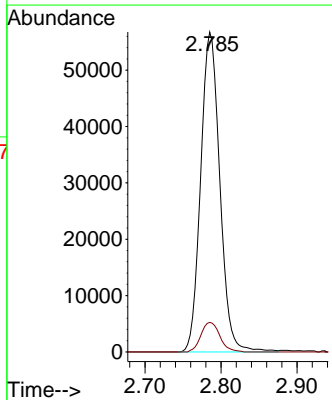
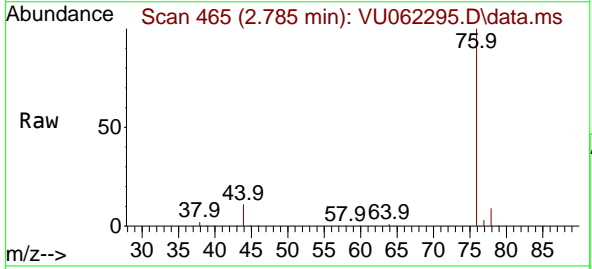
Instrument : MSVOA_U
 ClientSampleId : F7J35MSD

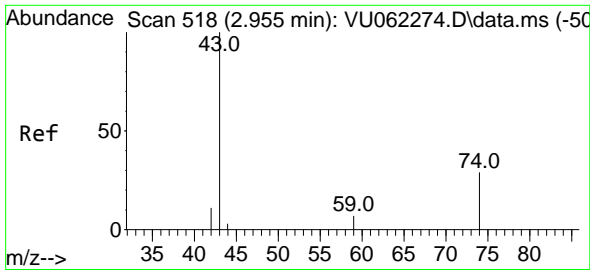
Tgt Ion	Resp	Lower	Upper
43	100		
58	35.5	0.0	64.0



#14
 Carbon disulfide
 Concen: 4.791 ug/L
 RT: 2.785 min Scan# 465
 Delta R.T. 0.000 min
 Lab File: VU062295.D
 Acq: 12 Dec 2024 18:08

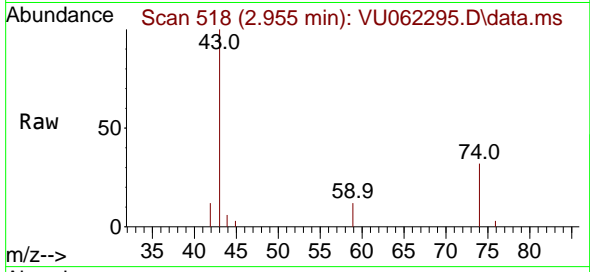
Tgt Ion	Resp	Lower	Upper
76	100		
78	9.3	7.5	11.3



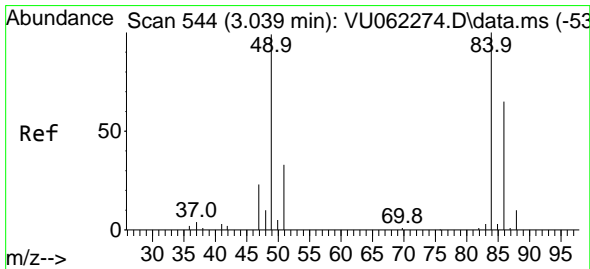
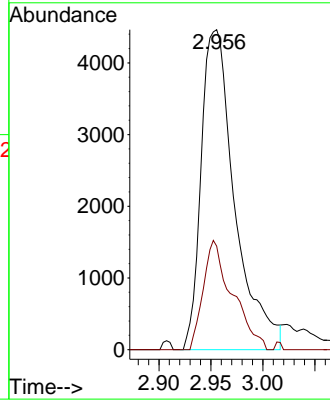
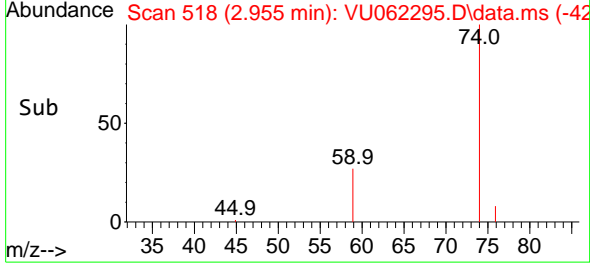


#15
 Methyl Acetate
 Concen: 4.689 ug/L
 RT: 2.955 min Scan# 518
 Delta R.T. 0.000 min
 Lab File: VU062295.D
 Acq: 12 Dec 2024 18:08

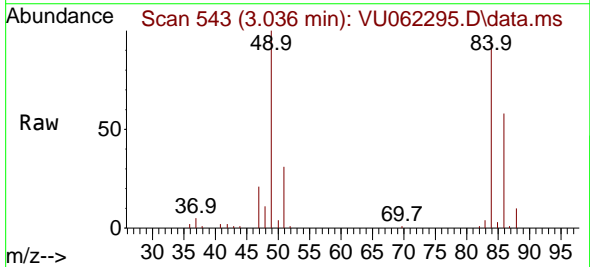
Instrument : MSVOA_U
 ClientSampleId : F7J35MSD



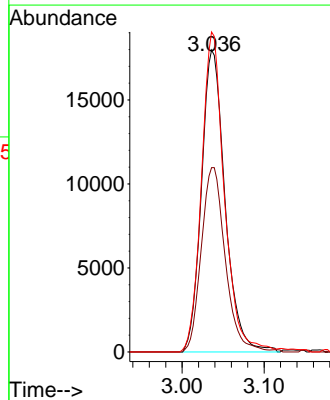
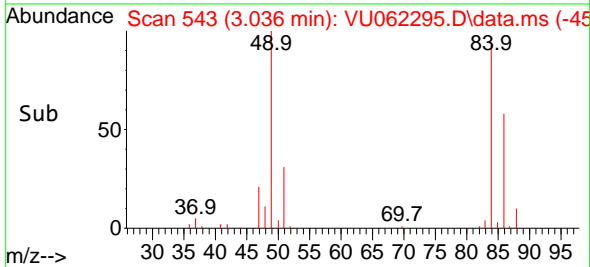
Tgt Ion: 43 Resp: 10059
 Ion Ratio Lower Upper
 43 100
 74 29.5 19.4 29.2#

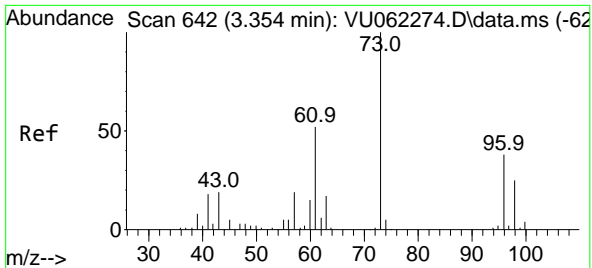


#16
 Methylene chloride
 Concen: 5.210 ug/L
 RT: 3.036 min Scan# 543
 Delta R.T. -0.003 min
 Lab File: VU062295.D
 Acq: 12 Dec 2024 18:08



Tgt Ion: 84 Resp: 35911
 Ion Ratio Lower Upper
 84 100
 86 61.1 43.5 80.7
 49 106.0 81.9 152.1



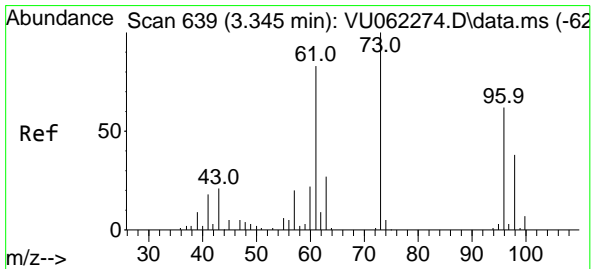
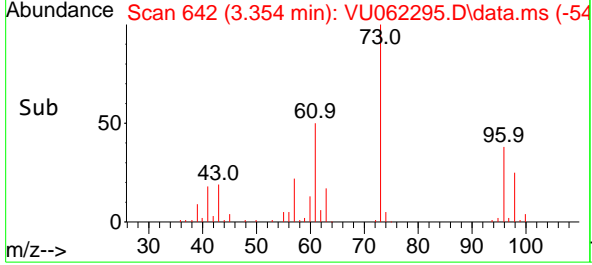
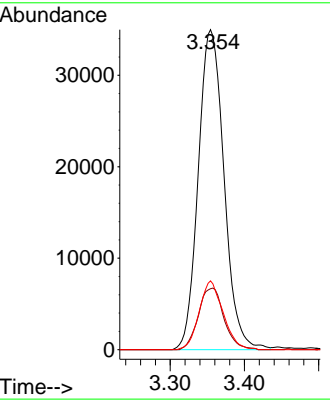
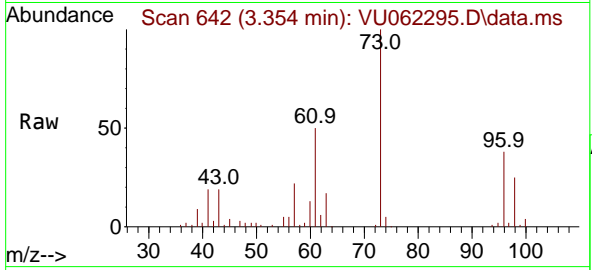


#17
 Methyl tert-butyl Ether
 Concen: 5.152 ug/L
 RT: 3.354 min Scan# 642
 Delta R.T. 0.000 min
 Lab File: VU062295.D
 Acq: 12 Dec 2024 18:08

Instrument : MSVOA_U
 ClientSampleId : F7J35MSD

Tgt Ion: 73 Resp: 84272

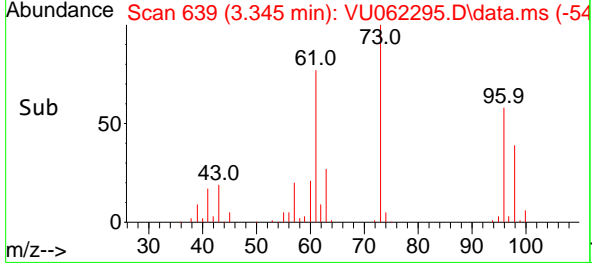
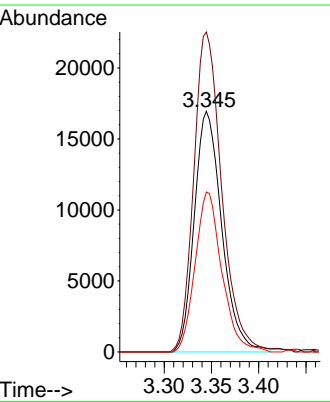
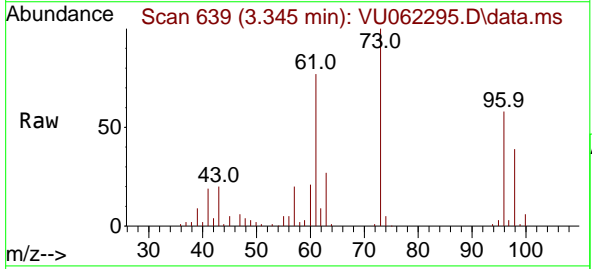
Ion	Ratio	Lower	Upper
73	100		
43	19.2	16.3	24.5
57	20.0	17.1	25.7

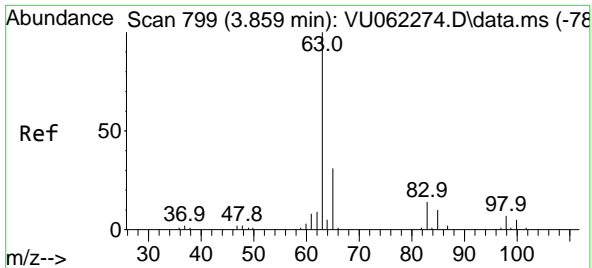


#18
 trans-1,2-Dichloroethene
 Concen: 5.081 ug/L
 RT: 3.345 min Scan# 639
 Delta R.T. 0.000 min
 Lab File: VU062295.D
 Acq: 12 Dec 2024 18:08

Tgt Ion: 96 Resp: 34278

Ion	Ratio	Lower	Upper
96	100		
61	133.0	104.2	193.4
98	66.5	45.7	84.9

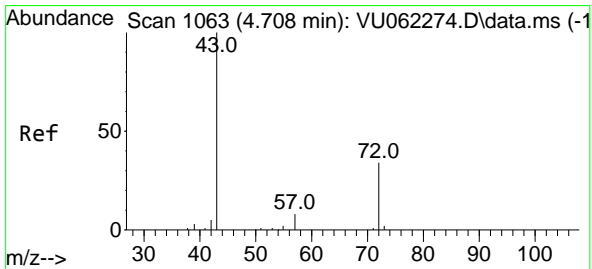
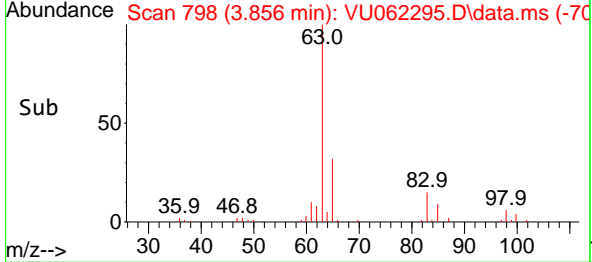
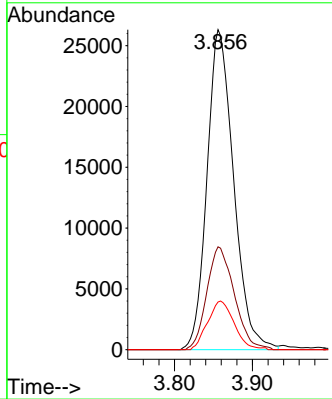
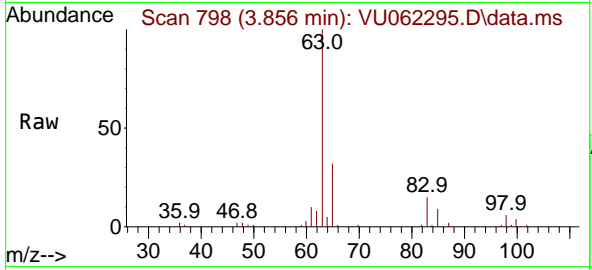




#19
 1,1-Dichloroethane
 Concen: 5.057 ug/L
 RT: 3.856 min Scan# 798
 Delta R.T. -0.003 min
 Lab File: VU062295.D
 Acq: 12 Dec 2024 18:08

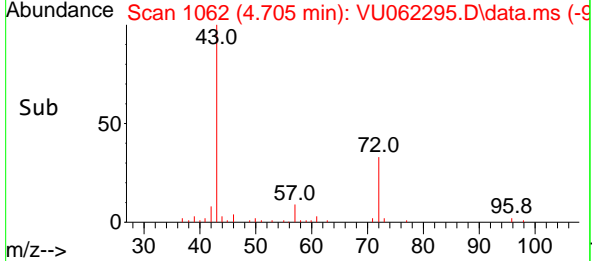
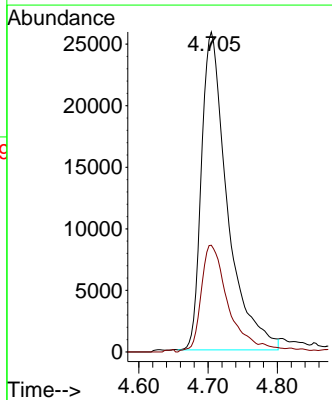
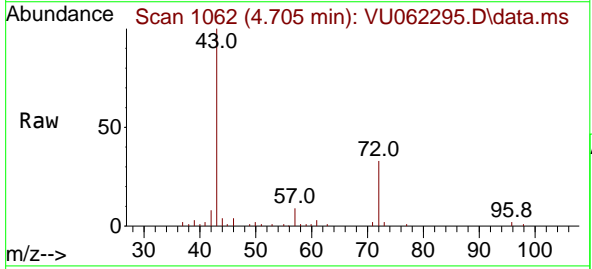
Instrument : MSVOA_U
 ClientSampleId : F7J35MSD

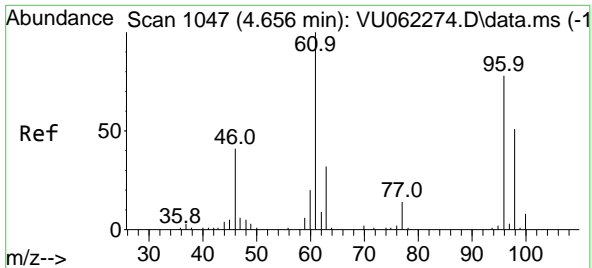
Tgt Ion	Resp	Lower	Upper
63	100		
65	32.1	22.7	42.3
83	14.9	9.9	18.3



#21
 2-Butanone
 Concen: 53.978 ug/L
 RT: 4.705 min Scan# 1062
 Delta R.T. -0.003 min
 Lab File: VU062295.D
 Acq: 12 Dec 2024 18:08

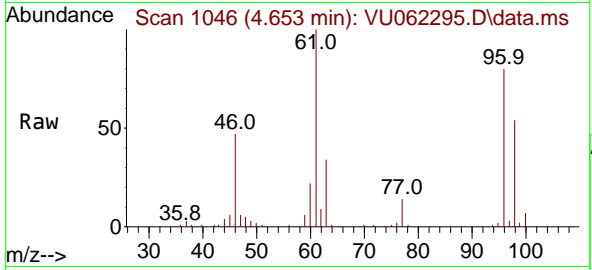
Tgt Ion	Resp	Lower	Upper
43	100		
72	34.0	14.8	44.4





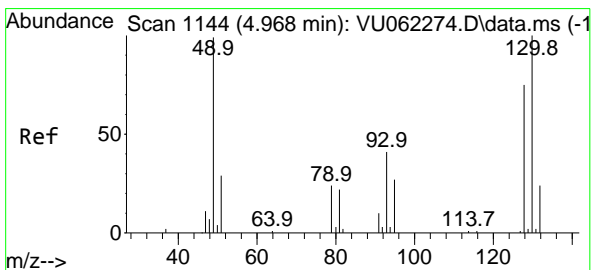
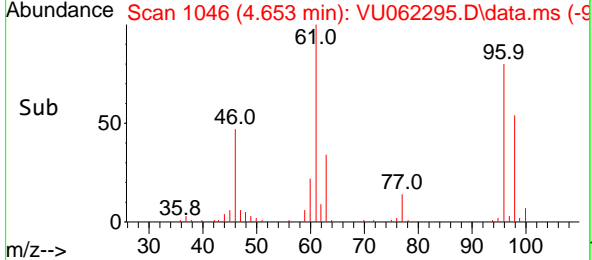
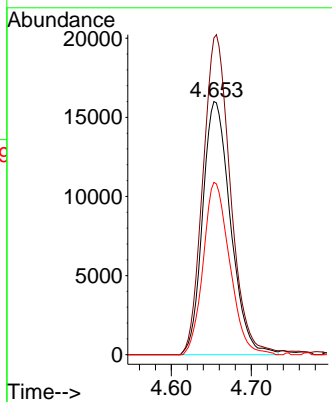
#22
 cis-1,2-Dichloroethene
 Concen: 5.127 ug/L
 RT: 4.653 min Scan# 1046
 Delta R.T. -0.003 min
 Lab File: VU062295.D
 Acq: 12 Dec 2024 18:08

Instrument : MSVOA_U
 ClientSampleId : F7J35MSD



Tgt Ion: 96 Resp: 38770

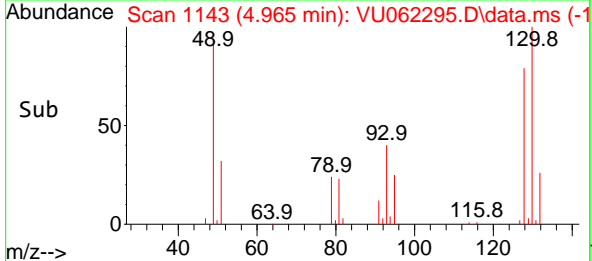
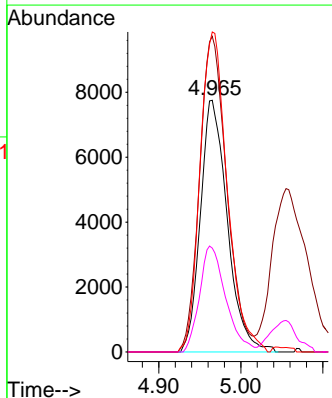
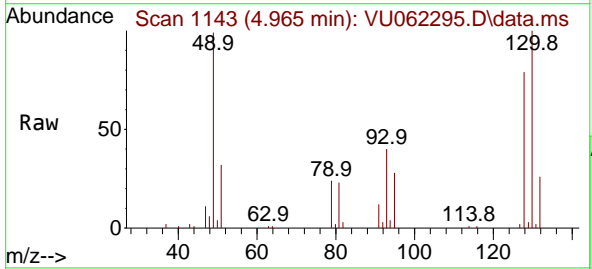
Ion	Ratio	Lower	Upper
96	100		
61	125.1	92.0	170.8
98	68.0	44.5	82.7

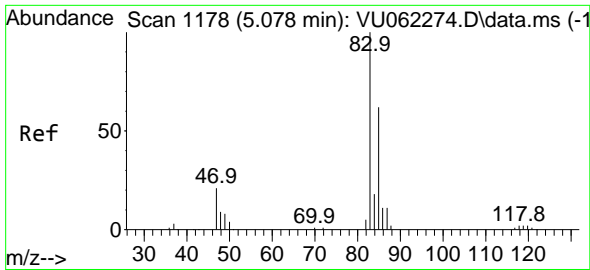


#23
 Bromochloromethane
 Concen: 5.323 ug/L
 RT: 4.965 min Scan# 1143
 Delta R.T. -0.003 min
 Lab File: VU062295.D
 Acq: 12 Dec 2024 18:08

Tgt Ion: 128 Resp: 17645

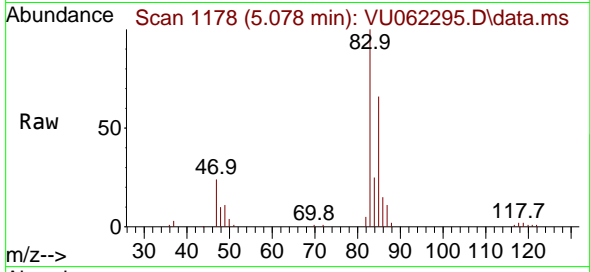
Ion	Ratio	Lower	Upper
128	100		
49	125.4	115.3	214.1
130	127.2	92.0	170.8
51	41.3	44.7	67.1#



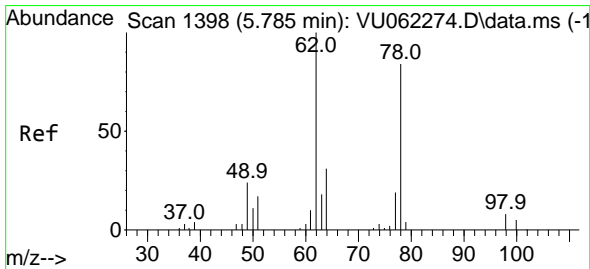
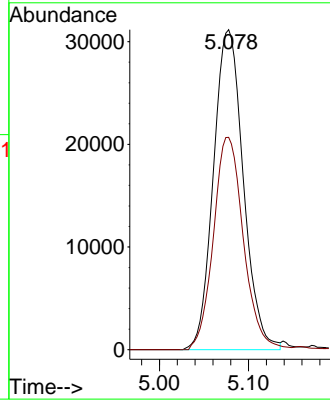
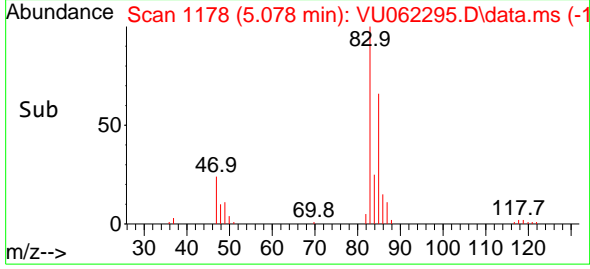


#25
 Chloroform
 Concen: 5.217 ug/L
 RT: 5.078 min Scan# 1178
 Delta R.T. 0.000 min
 Lab File: VU062295.D
 Acq: 12 Dec 2024 18:08

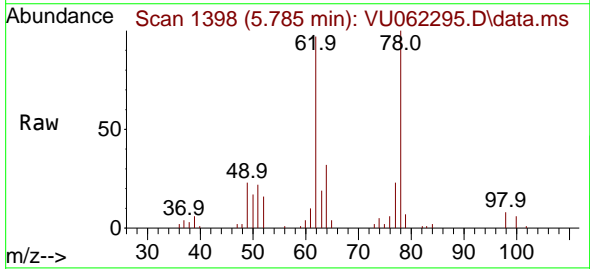
Instrument : MSVOA_U
 ClientSampleId : F7J35MSD



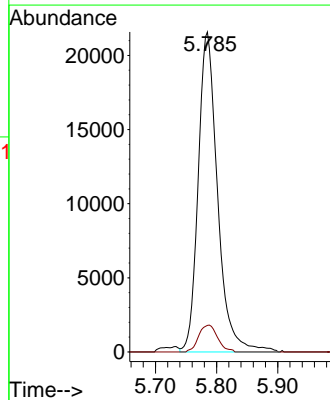
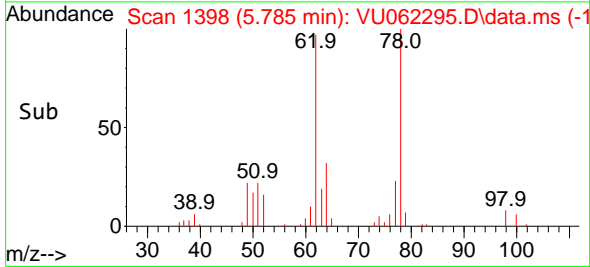
Tgt Ion: 83 Resp: 72674
 Ion Ratio Lower Upper
 83 100
 85 66.4 45.4 84.2

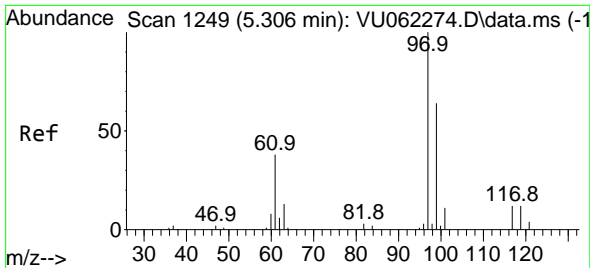


#27
 1,2-Dichloroethane
 Concen: 5.371 ug/L
 RT: 5.785 min Scan# 1398
 Delta R.T. 0.000 min
 Lab File: VU062295.D
 Acq: 12 Dec 2024 18:08



Tgt Ion: 62 Resp: 47543
 Ion Ratio Lower Upper
 62 100
 98 8.3 7.4 11.0

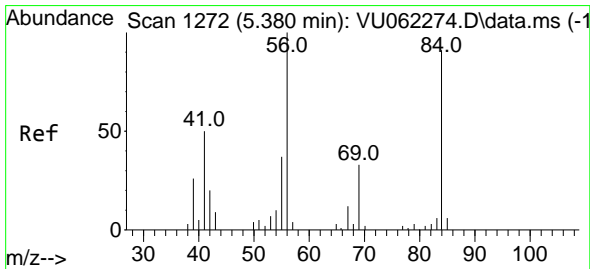
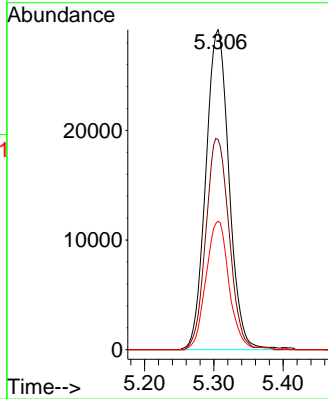
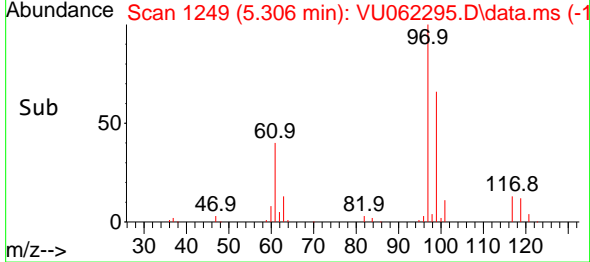
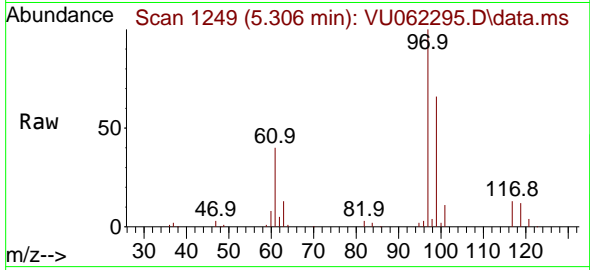




#29
 1,1,1-Trichloroethane
 Concen: 5.195 ug/L
 RT: 5.306 min Scan# 1249
 Delta R.T. 0.000 min
 Lab File: VU062295.D
 Acq: 12 Dec 2024 18:08

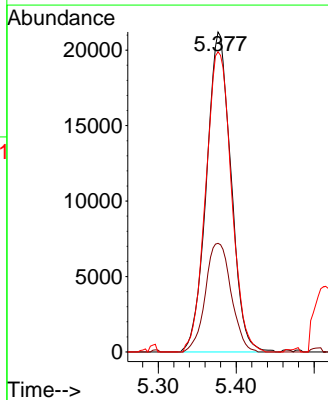
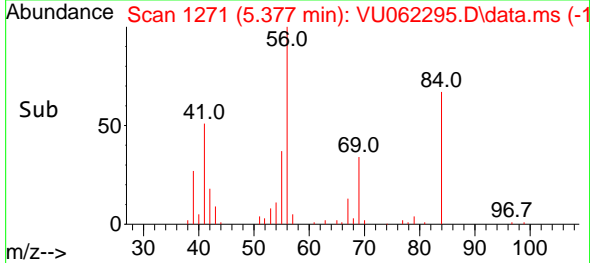
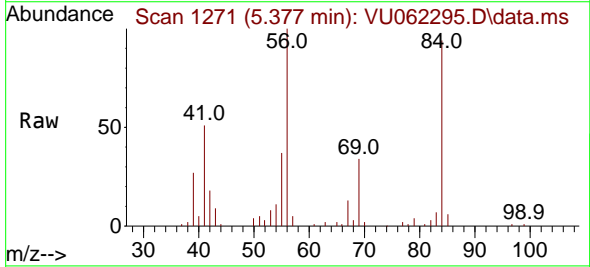
Instrument : MSVOA_U
 ClientSampleId : F7J35MSD

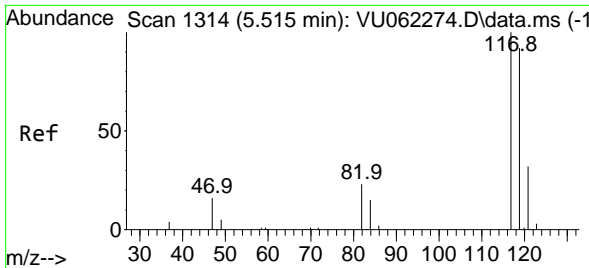
Tgt Ion	Resp	Lower	Upper
97	68028		
97	100		
99	66.3	51.4	77.2
61	39.7	37.8	56.6



#30
 Cyclohexane
 Concen: 4.360 ug/L
 RT: 5.377 min Scan# 1271
 Delta R.T. -0.003 min
 Lab File: VU062295.D
 Acq: 12 Dec 2024 18:08

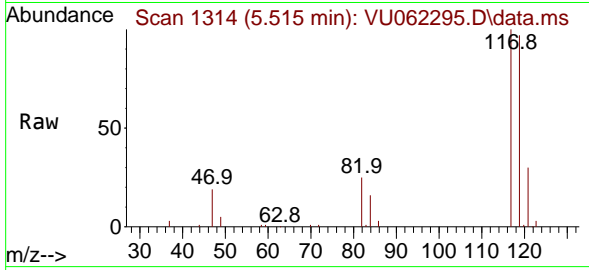
Tgt Ion	Resp	Lower	Upper
56	46303		
56	100		
69	35.7	25.1	37.7
84	98.2	70.6	105.8



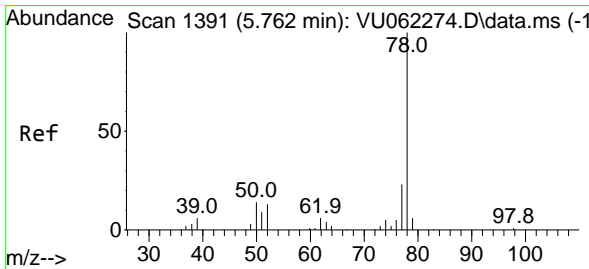
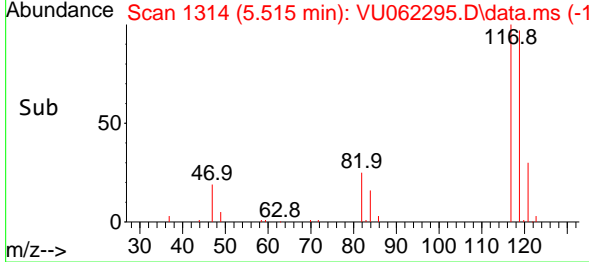
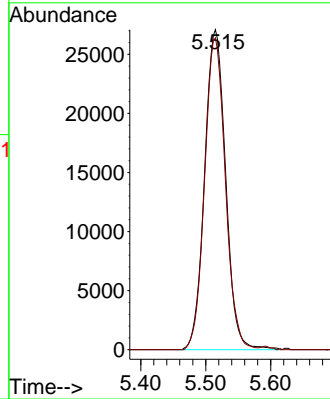


#31
 Carbon tetrachloride
 Concen: 5.083 ug/L
 RT: 5.515 min Scan# 1117
 Delta R.T. 0.000 min
 Lab File: VU062295.D
 Acq: 12 Dec 2024 18:08

Instrument : MSVOA_U
 ClientSampleId : F7J35MSD

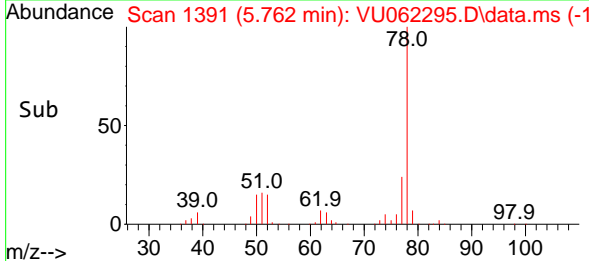
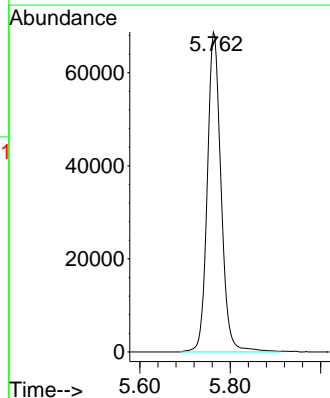
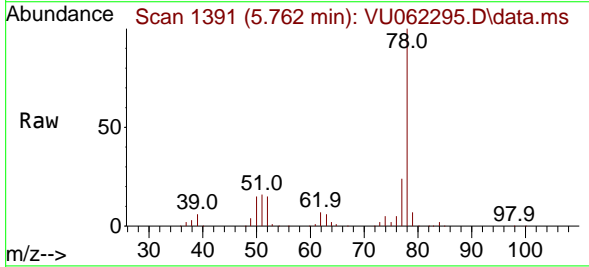


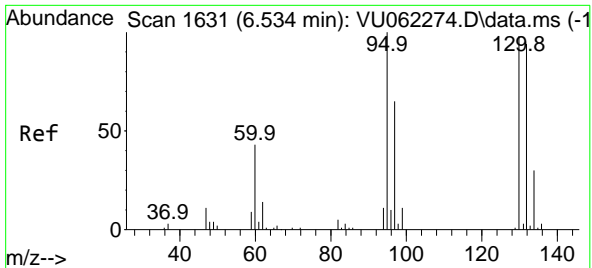
Tgt Ion:117 Resp: 61037
 Ion Ratio Lower Upper
 117 100
 119 95.9 77.5 116.3



#33
 Benzene
 Concen: 5.044 ug/L
 RT: 5.762 min Scan# 1391
 Delta R.T. 0.000 min
 Lab File: VU062295.D
 Acq: 12 Dec 2024 18:08

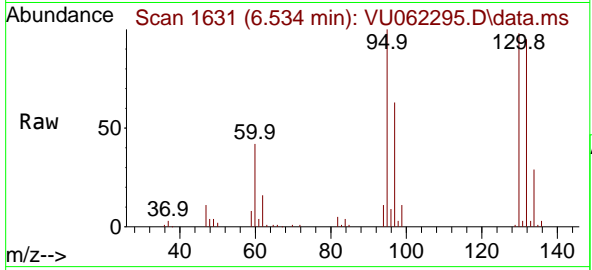
Tgt Ion: 78 Resp: 145508





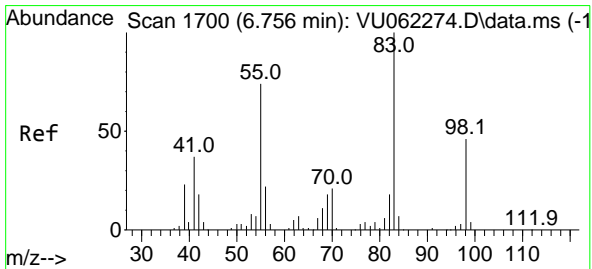
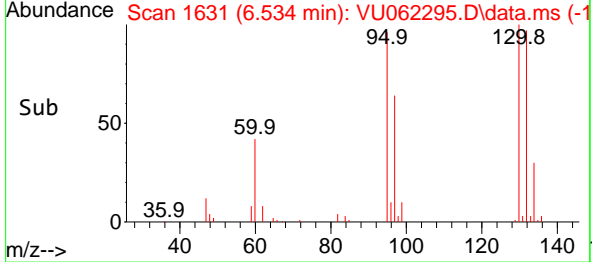
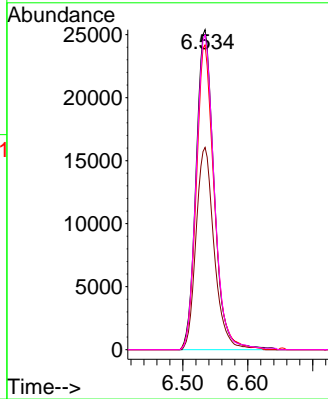
#34
 Trichloroethene
 Concen: 6.032 ug/L
 RT: 6.534 min Scan# 1699
 Delta R.T. 0.000 min
 Lab File: VU062295.D
 Acq: 12 Dec 2024 18:08

Instrument :
 MSVOA_U
 ClientSampleId :
 F7J35MSD



Tgt Ion: 95 Resp: 49292

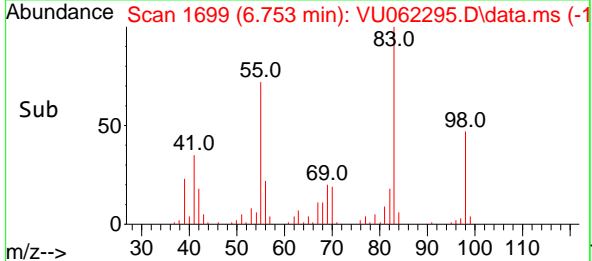
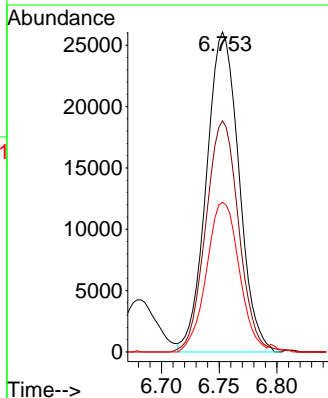
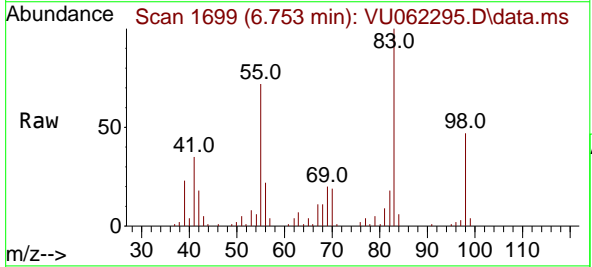
Ion	Ratio	Lower	Upper
95	100		
97	63.2	45.9	85.3
132	95.2	63.8	118.4
130	98.4	65.5	121.7

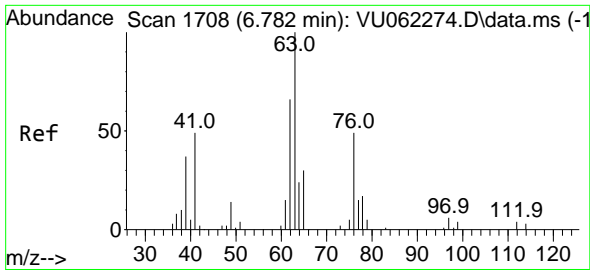


#35
 Methylcyclohexane
 Concen: 4.216 ug/L
 RT: 6.753 min Scan# 1699
 Delta R.T. -0.003 min
 Lab File: VU062295.D
 Acq: 12 Dec 2024 18:08

Tgt Ion: 83 Resp: 51083

Ion	Ratio	Lower	Upper
83	100		
55	73.2	60.7	91.1
98	47.1	34.8	52.2

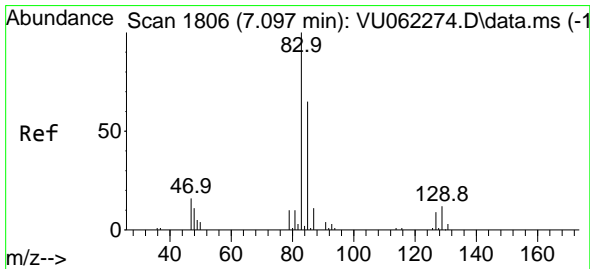
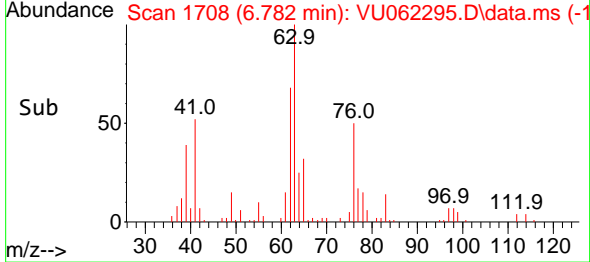
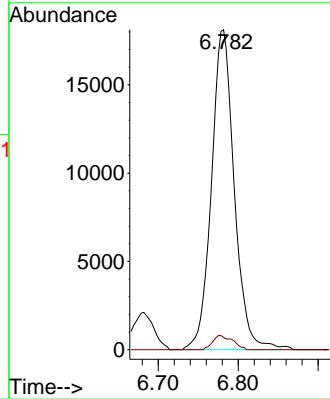
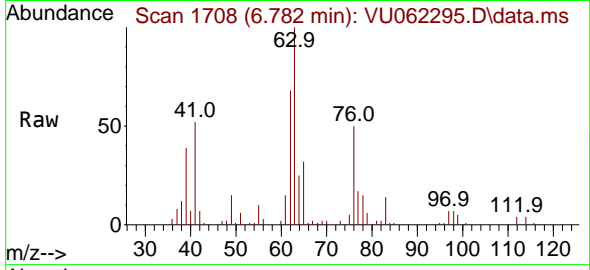




#37
 1,2-Dichloropropane
 Concen: 5.102 ug/L
 RT: 6.782 min Scan# 1
 Delta R.T. 0.000 min
 Lab File: VU062295.D
 Acq: 12 Dec 2024 18:08

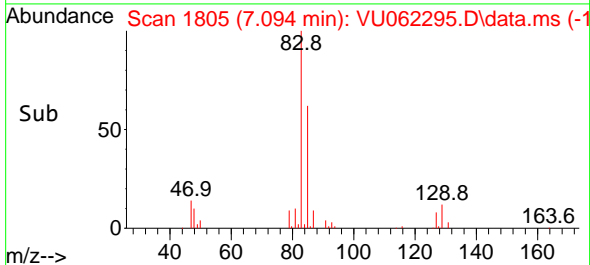
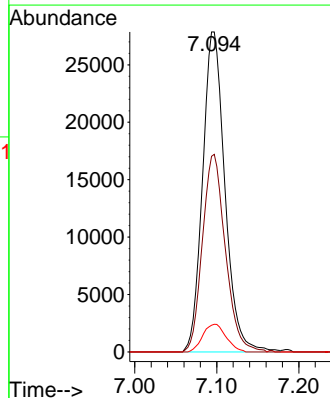
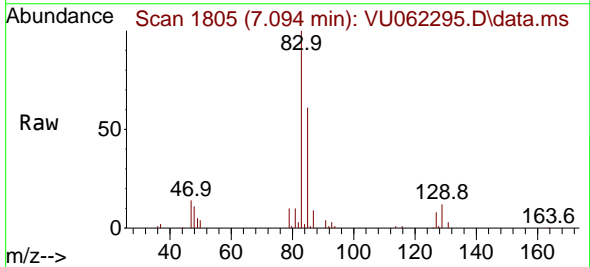
Instrument :
 MSVOA_U
 ClientSampleId :
 F7J35MSD

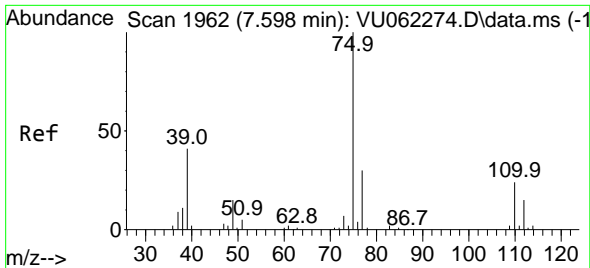
Tgt Ion: 63 Resp: 35841
 Ion Ratio Lower Upper
 63 100
 112 3.9 3.4 5.0



#38
 Bromodichloromethane
 Concen: 5.323 ug/L
 RT: 7.094 min Scan# 1805
 Delta R.T. -0.003 min
 Lab File: VU062295.D
 Acq: 12 Dec 2024 18:08

Tgt Ion: 83 Resp: 52758
 Ion Ratio Lower Upper
 83 100
 85 61.2 44.1 81.9
 127 8.3 6.9 10.3

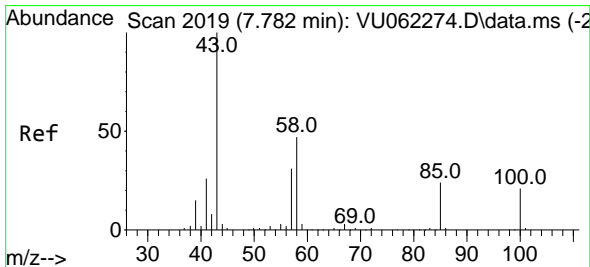
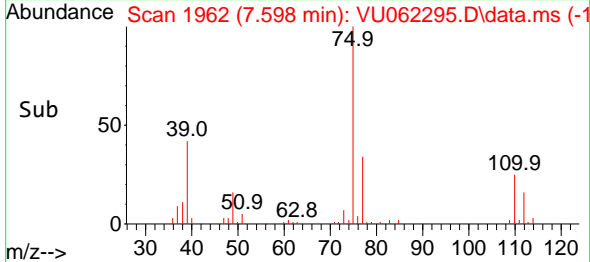
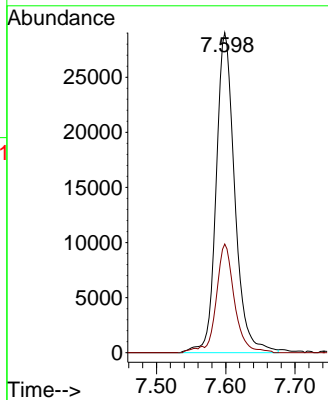
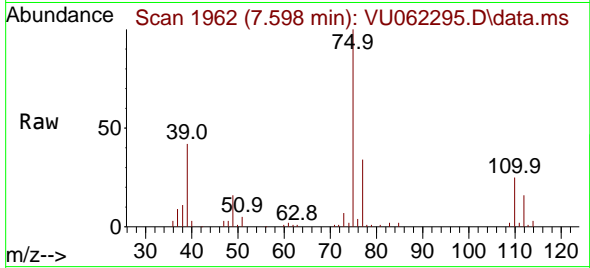




#39
 cis-1,3-Dichloropropene
 Concen: 4.822 ug/L
 RT: 7.598 min Scan# 1962
 Delta R.T. 0.000 min
 Lab File: VU062295.D
 Acq: 12 Dec 2024 18:08

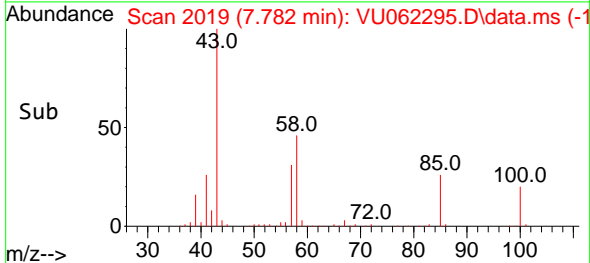
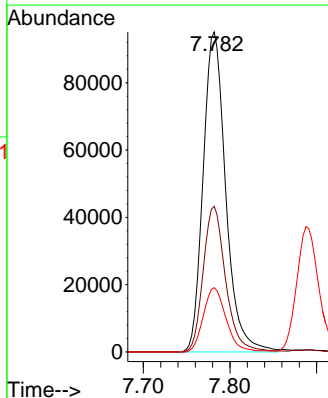
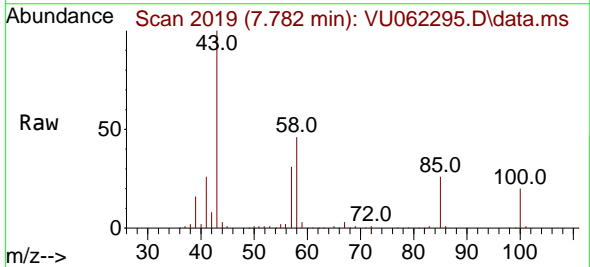
Instrument : MSVOA_U
 ClientSampleId : F7J35MSD

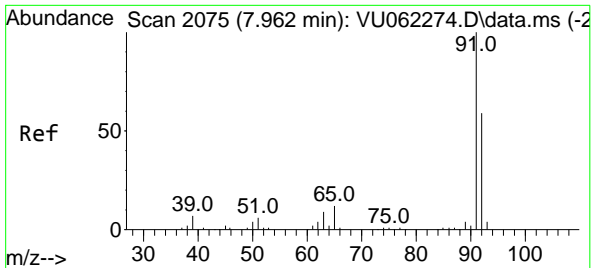
Tgt Ion: 75 Resp: 54304
 Ion Ratio Lower Upper
 75 100
 77 33.9 22.3 41.3



#40
 4-Methyl-2-pentanone
 Concen: 52.437 ug/L
 RT: 7.782 min Scan# 2019
 Delta R.T. 0.000 min
 Lab File: VU062295.D
 Acq: 12 Dec 2024 18:08

Tgt Ion: 43 Resp: 172655
 Ion Ratio Lower Upper
 43 100
 58 45.2 33.3 49.9
 100 20.3 12.4 18.6#

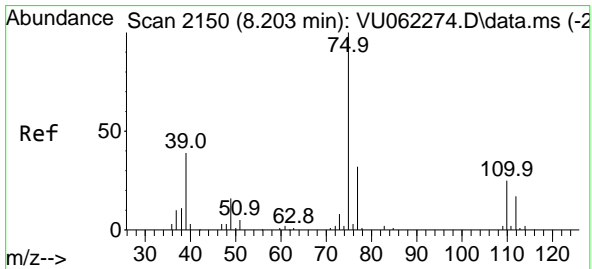
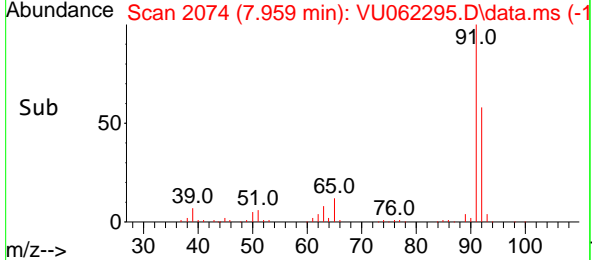
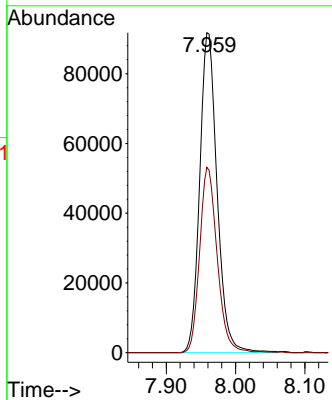
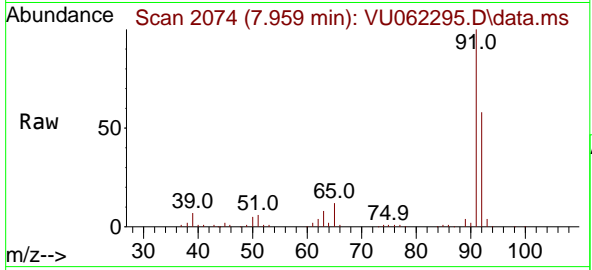




#42
 Toluene
 Concen: 5.152 ug/L
 RT: 7.959 min Scan# 2074
 Delta R.T. -0.003 min
 Lab File: VU062295.D
 Acq: 12 Dec 2024 18:08

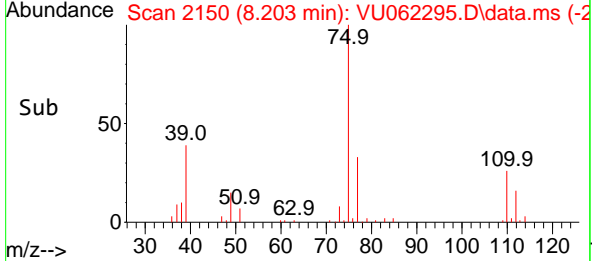
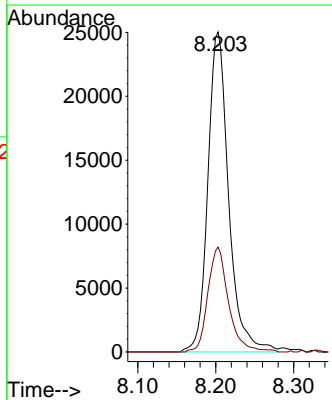
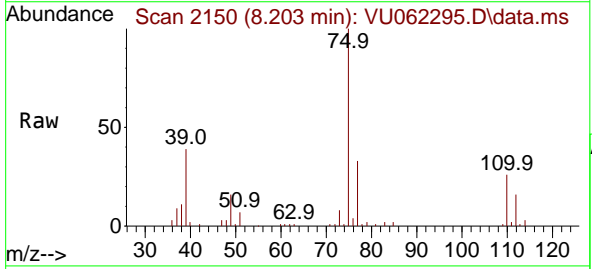
Instrument : MSVOA_U
 ClientSampleId : F7J35MSD

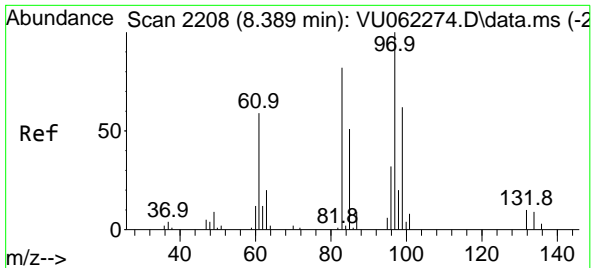
Tgt Ion: 91 Resp: 160276
 Ion Ratio Lower Upper
 91 100
 92 57.9 39.0 72.4



#44
 trans-1,3-Dichloropropene
 Concen: 5.039 ug/L
 RT: 8.203 min Scan# 2150
 Delta R.T. 0.000 min
 Lab File: VU062295.D
 Acq: 12 Dec 2024 18:08

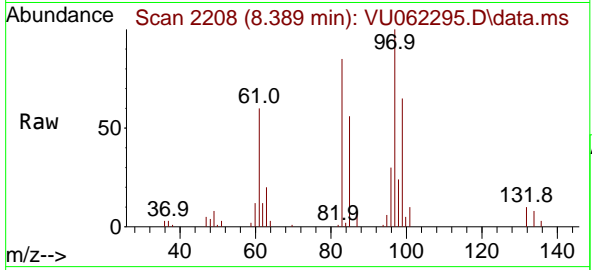
Tgt Ion: 75 Resp: 46339
 Ion Ratio Lower Upper
 75 100
 77 32.7 21.8 40.4





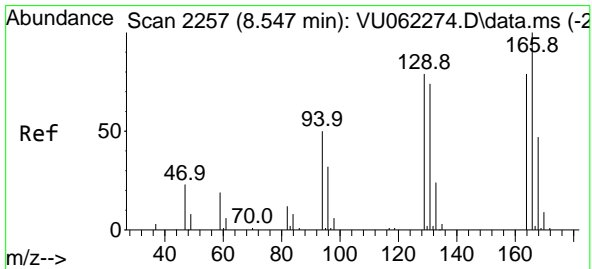
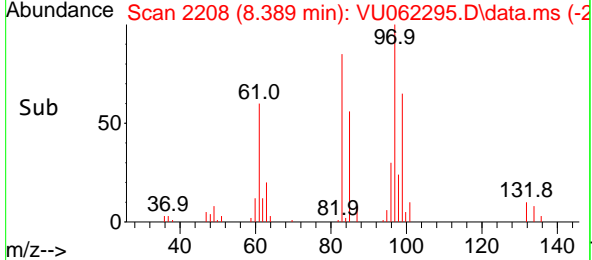
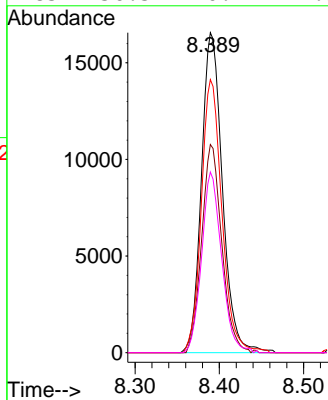
#45
 1,1,2-Trichloroethane
 Concen: 5.419 ug/L
 RT: 8.389 min Scan# 21
 Delta R.T. 0.000 min
 Lab File: VU062295.D
 Acq: 12 Dec 2024 18:08

Instrument :
 MSVOA_U
 ClientSampleId :
 F7J35MSD



Tgt Ion: 97 Resp: 28741

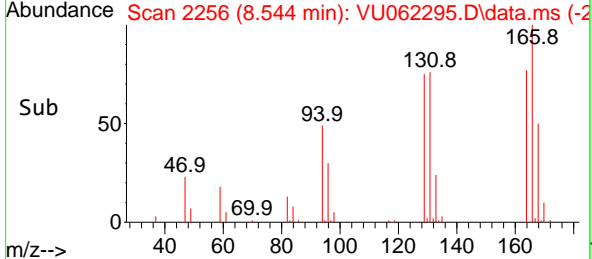
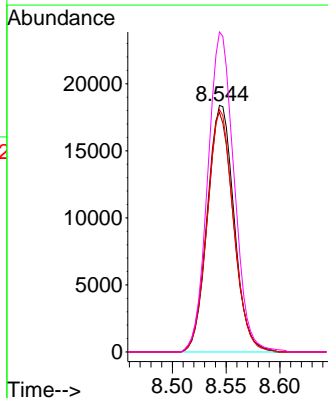
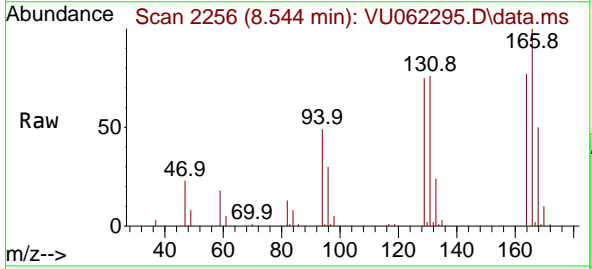
Ion	Ratio	Lower	Upper
97	100		
99	65.0	43.0	79.8
83	85.3	61.7	114.5
85	56.5	40.1	74.5

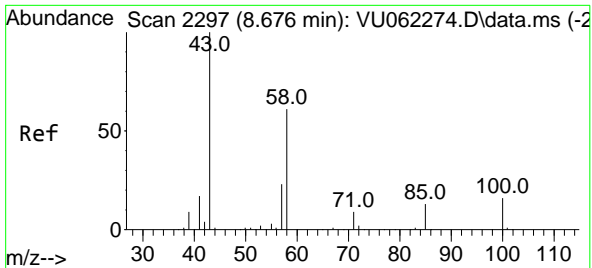


#47
 Tetrachloroethene
 Concen: 5.003 ug/L
 RT: 8.544 min Scan# 2256
 Delta R.T. -0.003 min
 Lab File: VU062295.D
 Acq: 12 Dec 2024 18:08

Tgt Ion: 164 Resp: 31565

Ion	Ratio	Lower	Upper
164	100		
129	97.1	73.2	136.0
131	98.3	72.3	134.3
166	129.8	90.2	167.4



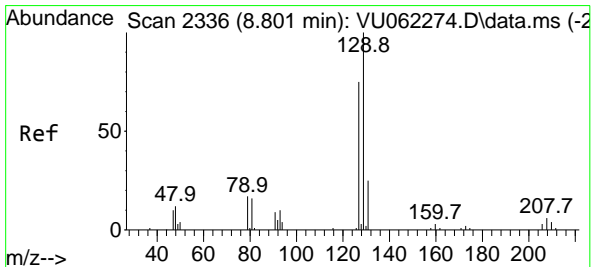
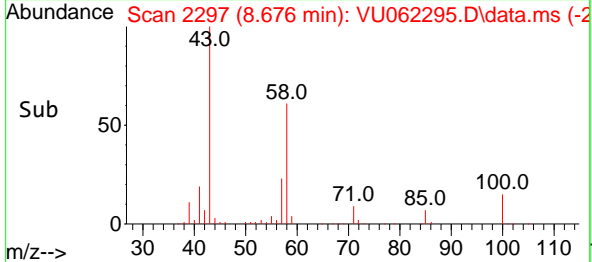
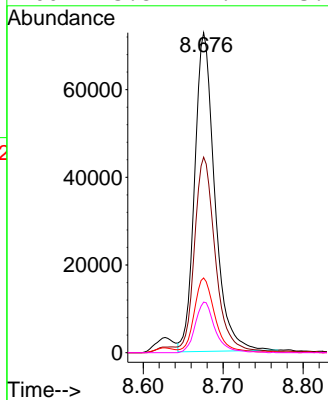
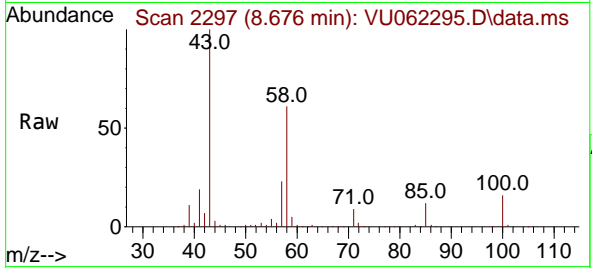


#48
 2-Hexanone
 Concen: 52.402 ug/L
 RT: 8.676 min Scan# 21
 Delta R.T. 0.000 min
 Lab File: VU062295.D
 Acq: 12 Dec 2024 18:08

Instrument : MSVOA_U
 ClientSampleId : F7J35MSD

Tgt Ion: 43 Resp: 127512

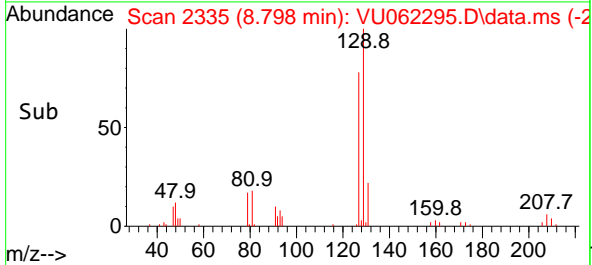
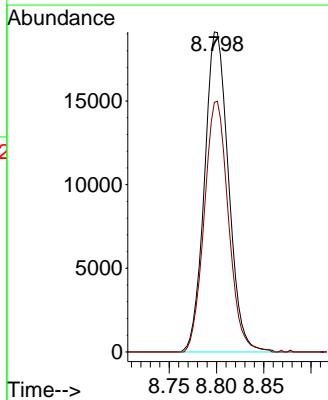
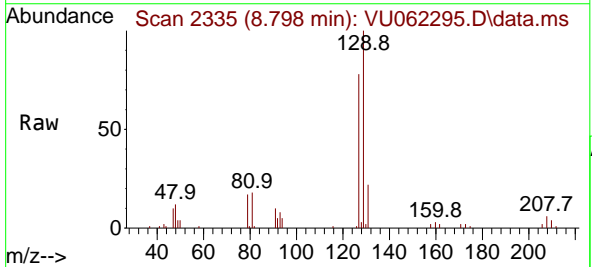
Ion	Ratio	Lower	Upper
43	100		
58	65.8	47.5	71.3
57	23.5	15.6	23.4#
100	15.8	9.2	13.8#

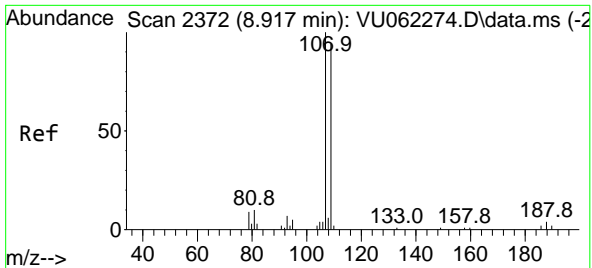


#49
 Dibromochloromethane
 Concen: 5.271 ug/L
 RT: 8.798 min Scan# 2335
 Delta R.T. -0.003 min
 Lab File: VU062295.D
 Acq: 12 Dec 2024 18:08

Tgt Ion: 129 Resp: 33775

Ion	Ratio	Lower	Upper
129	100		
127	78.0	51.1	94.9

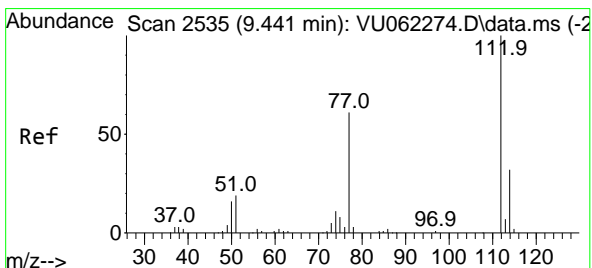
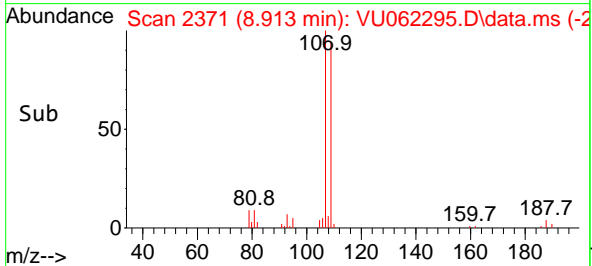
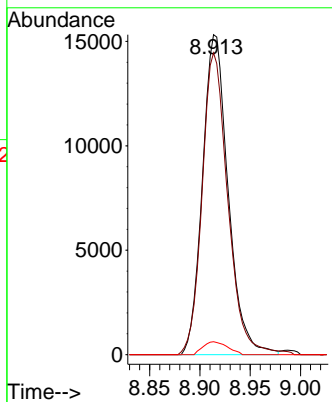
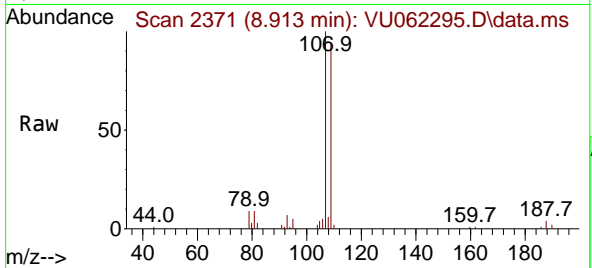




#50
 1,2-Dibromoethane
 Concen: 5.351 ug/L
 RT: 8.913 min Scan# 21
 Delta R.T. -0.003 min
 Lab File: VU062295.D
 Acq: 12 Dec 2024 18:08

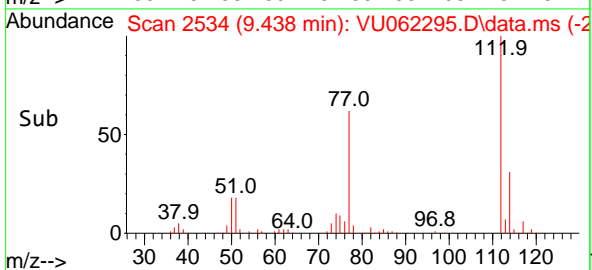
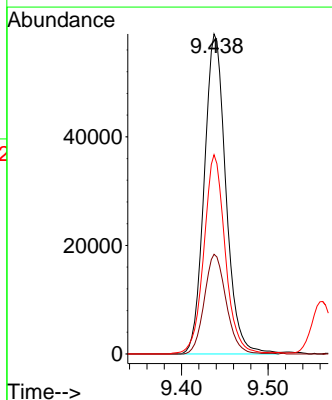
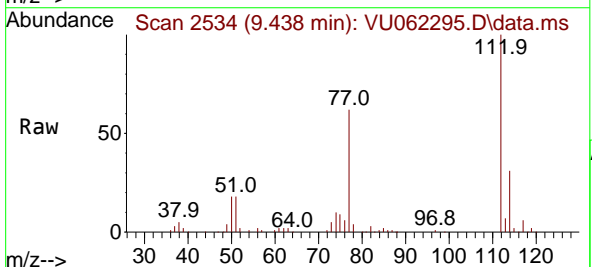
Instrument :
 MSVOA_U
 ClientSampleId :
 F7J35MSD

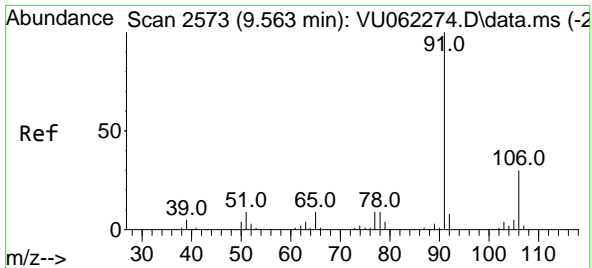
Tgt Ion	Resp	Lower	Upper
107	27269		
107	100		
109	94.3	66.8	124.2
188	4.0	2.3	3.5



#51
 Chlorobenzene
 Concen: 5.145 ug/L
 RT: 9.438 min Scan# 2534
 Delta R.T. -0.003 min
 Lab File: VU062295.D
 Acq: 12 Dec 2024 18:08

Tgt Ion	Resp	Lower	Upper
112	102547		
112	100		
114	31.2	23.0	42.6
77	62.3	50.5	75.7

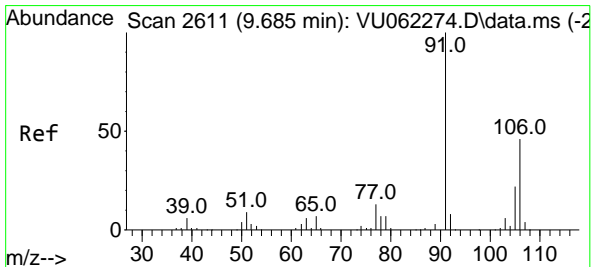
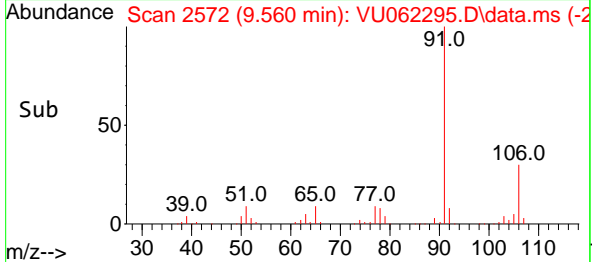
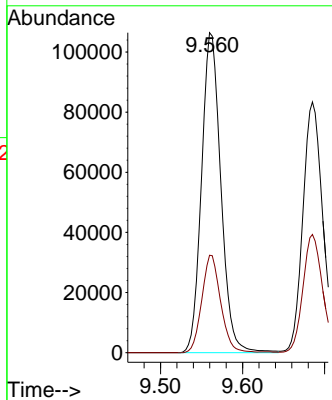
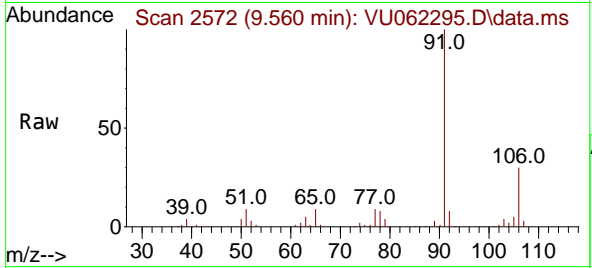




#52
 Ethylbenzene
 Concen: 4.996 ug/L
 RT: 9.560 min Scan# 2573
 Delta R.T. -0.003 min
 Lab File: VU062295.D
 Acq: 12 Dec 2024 18:08

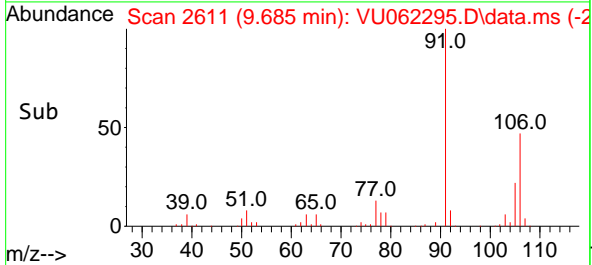
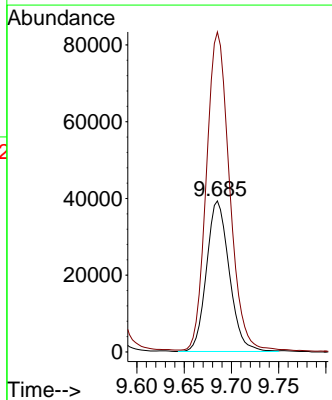
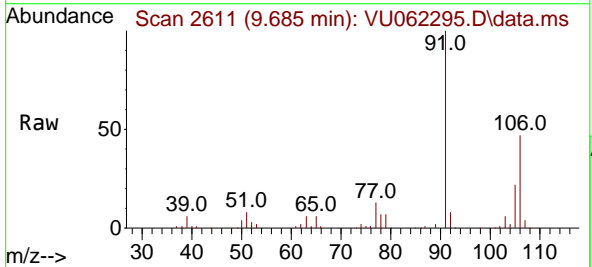
Instrument : MSVOA_U
 ClientSampleId : F7J35MSD

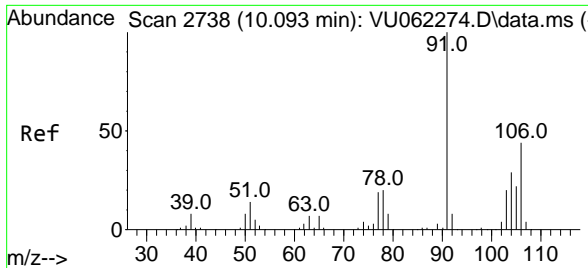
Tgt Ion: 91 Resp: 174249
 Ion Ratio Lower Upper
 91 100
 106 30.5 21.6 40.0



#53
 m,p-Xylene
 Concen: 5.101 ug/L
 RT: 9.685 min Scan# 2611
 Delta R.T. 0.000 min
 Lab File: VU062295.D
 Acq: 12 Dec 2024 18:08

Tgt Ion:106 Resp: 65686
 Ion Ratio Lower Upper
 106 100
 91 211.9 147.6 274.0

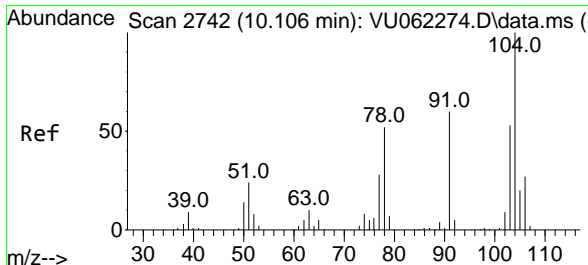
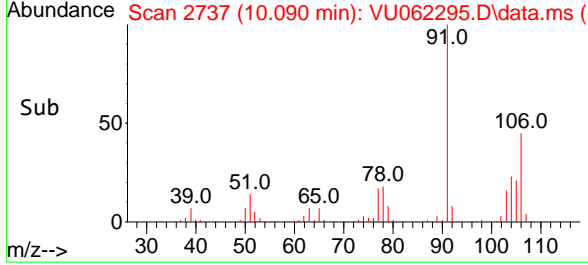
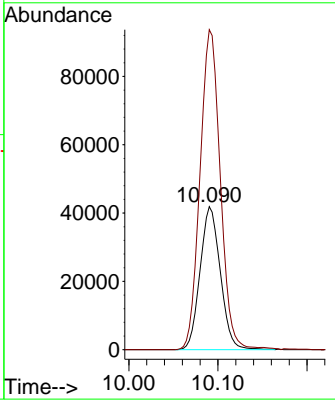
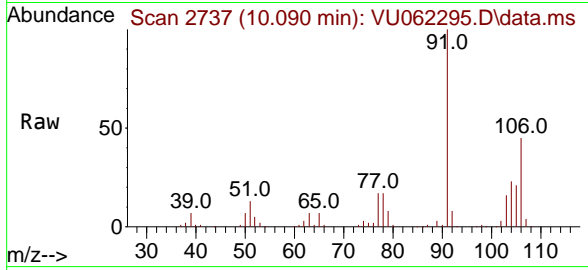




#54
 o-Xylene
 Concen: 5.270 ug/L
 RT: 10.090 min Scan# 21
 Delta R.T. -0.003 min
 Lab File: VU062295.D
 Acq: 12 Dec 2024 18:08

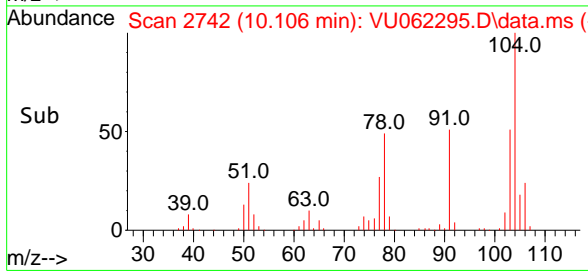
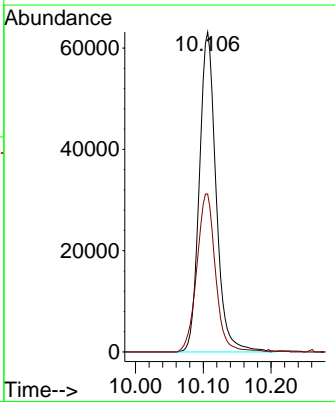
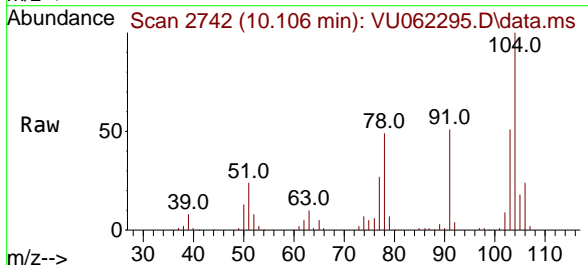
Instrument : MSVOA_U
 ClientSampleId : F7J35MSD

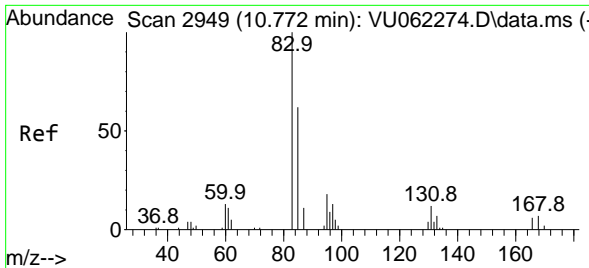
Tgt Ion:106 Resp: 66004
 Ion Ratio Lower Upper
 106 100
 91 223.7 159.8 296.8



#55
 Styrene
 Concen: 5.259 ug/L
 RT: 10.106 min Scan# 2742
 Delta R.T. 0.000 min
 Lab File: VU062295.D
 Acq: 12 Dec 2024 18:08

Tgt Ion:104 Resp: 108569
 Ion Ratio Lower Upper
 104 100
 78 49.4 33.2 61.7

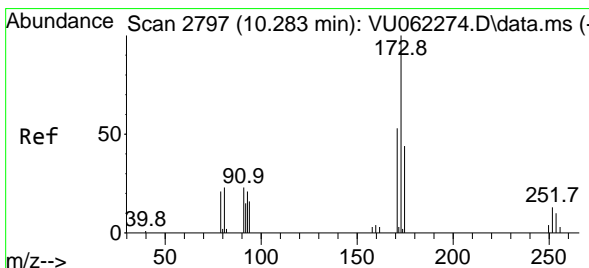
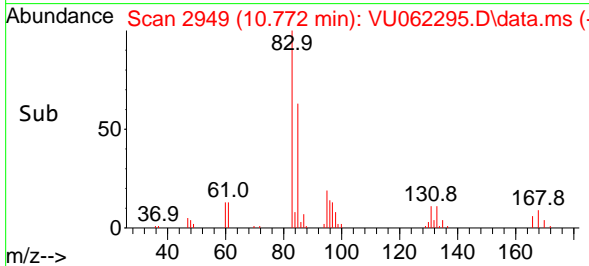
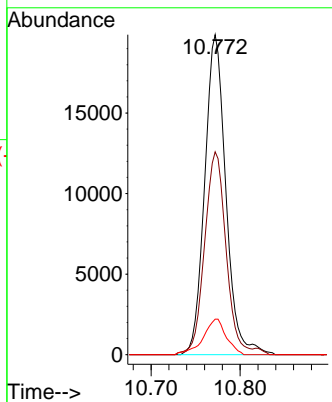
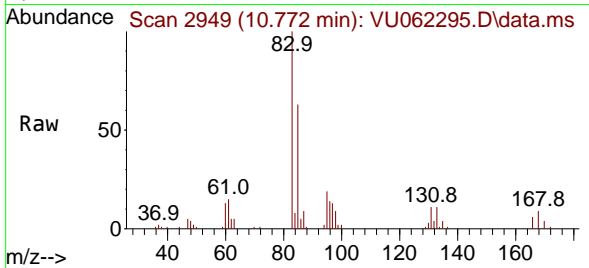




#57
 1,1,2,2-Tetrachloroethane
 Concen: 5.302 ug/L
 RT: 10.772 min Scan# 2949
 Delta R.T. 0.000 min
 Lab File: VU062295.D
 Acq: 12 Dec 2024 18:08

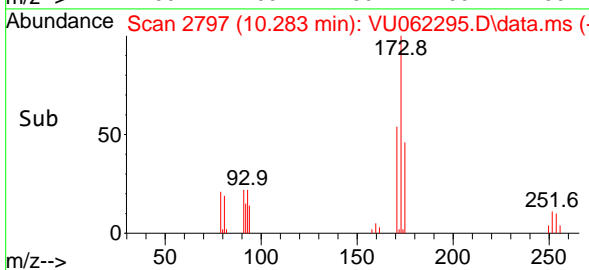
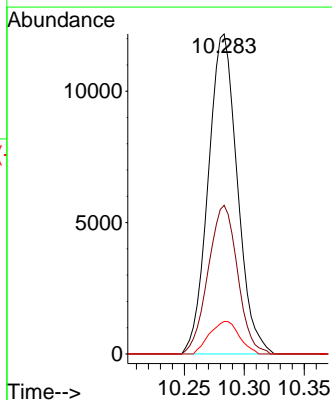
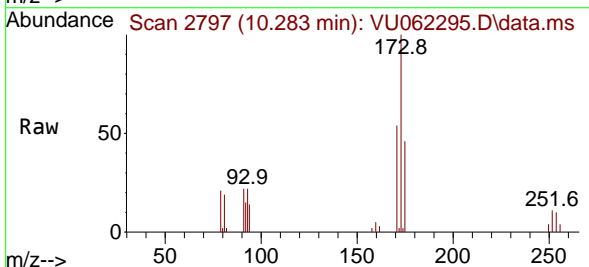
Instrument : MSVOA_U
 ClientSampleId : F7J35MSD

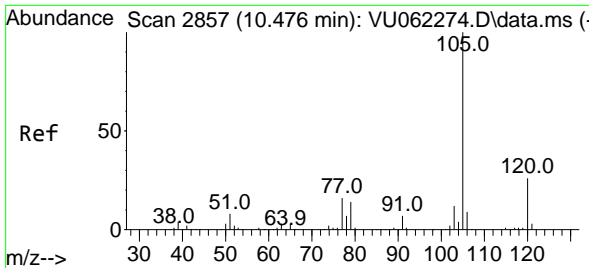
Tgt Ion	Resp	Lower	Upper
83	32729	100	
85	63.4	44.4	82.4
131	11.1	7.3	10.9



#59
 Bromoform
 Concen: 5.372 ug/L
 RT: 10.283 min Scan# 2797
 Delta R.T. 0.000 min
 Lab File: VU062295.D
 Acq: 12 Dec 2024 18:08

Tgt Ion	Resp	Lower	Upper
173	20518	100	
175	47.0	39.0	58.4
254	10.4	7.4	11.0

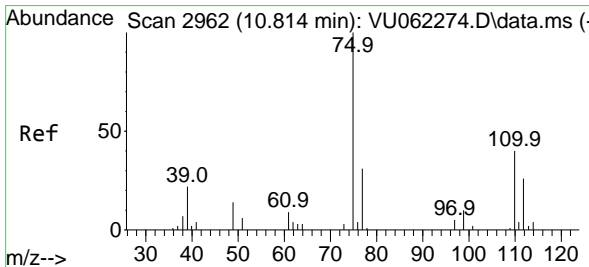
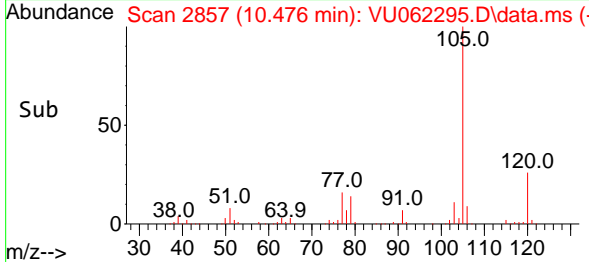
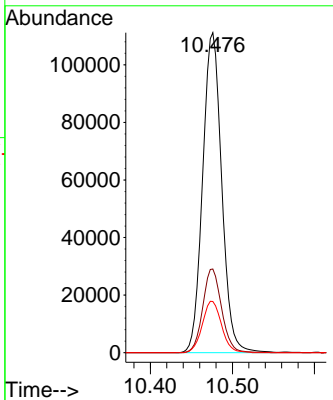
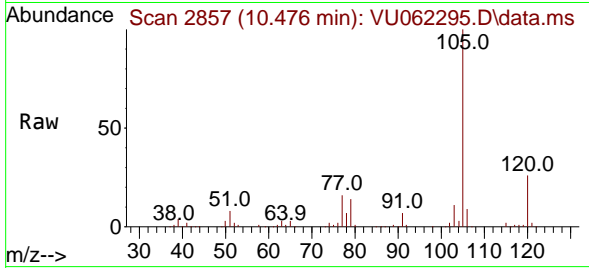




#60
 Isopropylbenzene
 Concen: 5.102 ug/L
 RT: 10.476 min Scan# 2857
 Delta R.T. 0.000 min
 Lab File: VU062295.D
 Acq: 12 Dec 2024 18:08

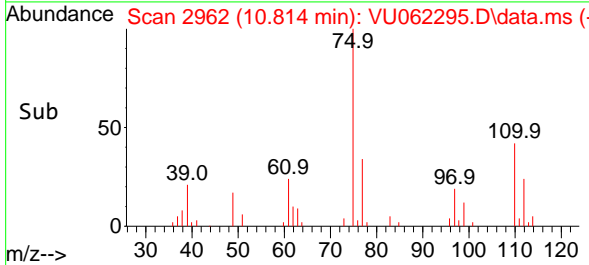
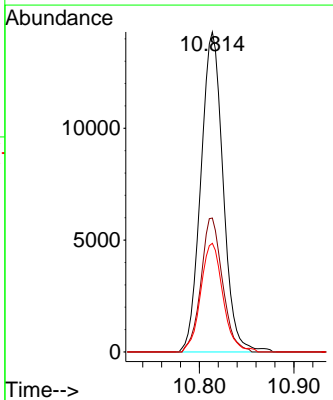
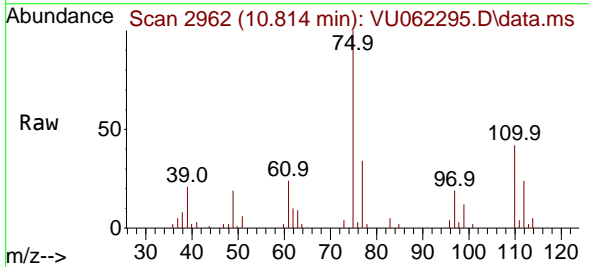
Instrument :
 MSVOA_U
 ClientSampleId :
 F7J35MSD

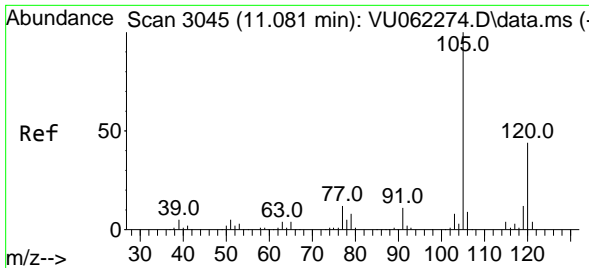
Tgt Ion	Resp	Lower	Upper
105	179123		
105	100		
120	26.0	20.6	31.0
77	16.2	13.0	19.6



#61
 1,2,3-Trichloropropane
 Concen: 5.194 ug/L
 RT: 10.814 min Scan# 2962
 Delta R.T. 0.000 min
 Lab File: VU062295.D
 Acq: 12 Dec 2024 18:08

Tgt Ion	Resp	Lower	Upper
75	23341		
75	100		
110	40.6	28.9	43.3
77	34.1	26.5	39.7

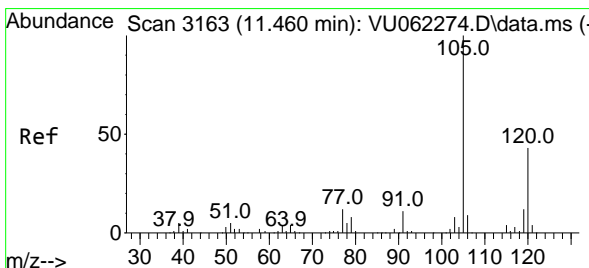
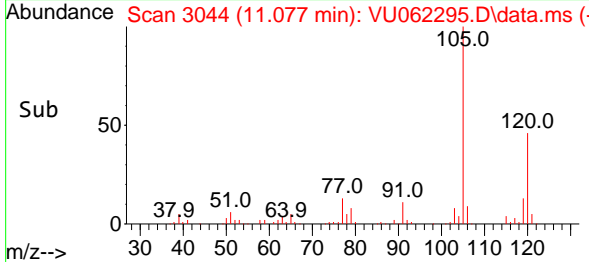
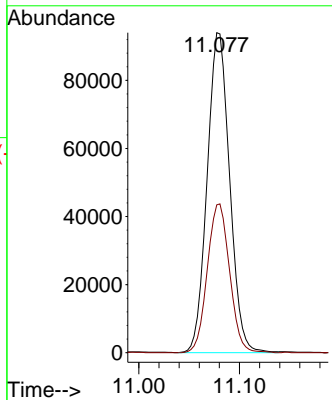
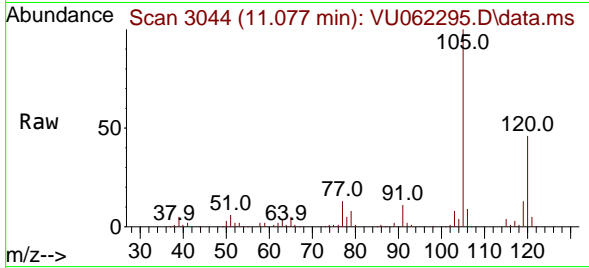




#62
 1,3,5-Trimethylbenzene
 Concen: 4.920 ug/L
 RT: 11.077 min Scan# 3045
 Delta R.T. -0.003 min
 Lab File: VU062295.D
 Acq: 12 Dec 2024 18:08

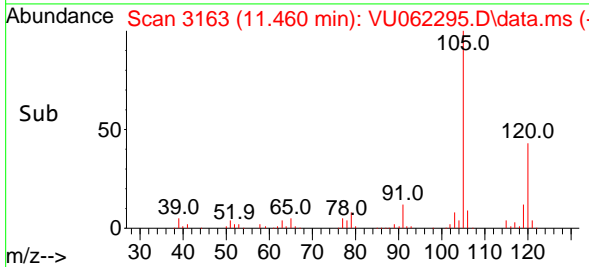
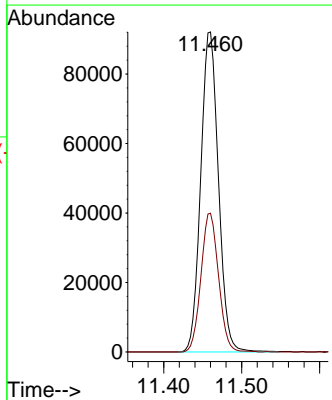
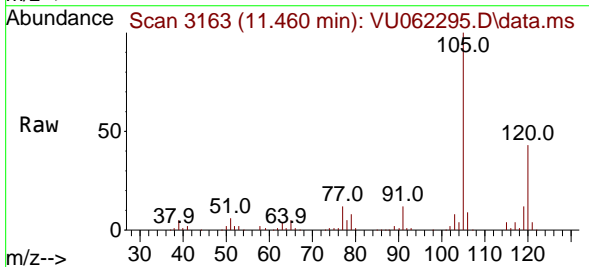
Instrument : MSVOA_U
 ClientSampleId : F7J35MSD

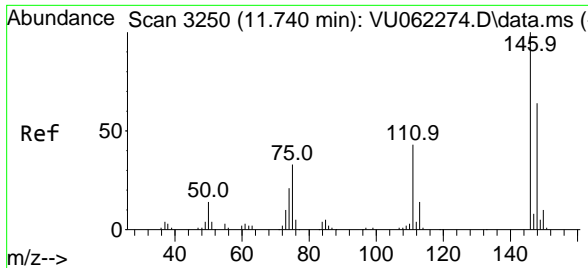
Tgt Ion:105 Resp: 146171
 Ion Ratio Lower Upper
 105 100
 120 46.1 36.7 55.1



#63
 1,2,4-Trimethylbenzene
 Concen: 4.986 ug/L
 RT: 11.460 min Scan# 3163
 Delta R.T. 0.000 min
 Lab File: VU062295.D
 Acq: 12 Dec 2024 18:08

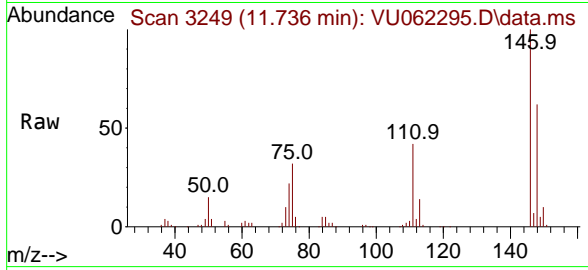
Tgt Ion:105 Resp: 145138
 Ion Ratio Lower Upper
 105 100
 120 43.1 34.7 52.1



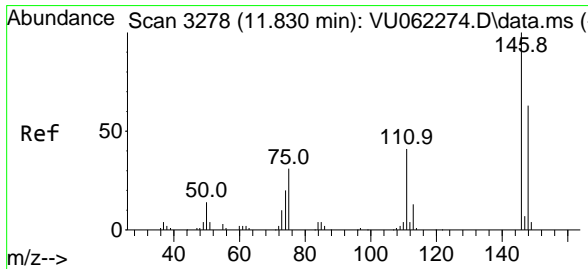
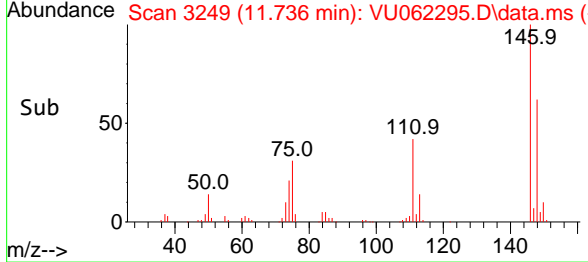
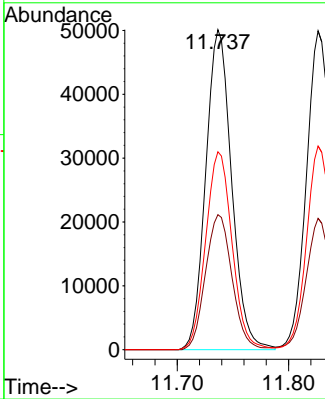


#64
 1,3-Dichlorobenzene
 Concen: 5.024 ug/L
 RT: 11.736 min Scan# 31
 Delta R.T. -0.003 min
 Lab File: VU062295.D
 Acq: 12 Dec 2024 18:08

Instrument :
 MSVOA_U
 ClientSampleId :
 F7J35MSD

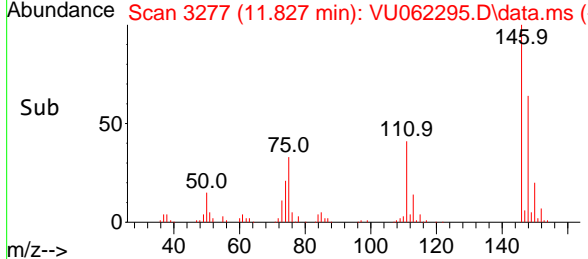
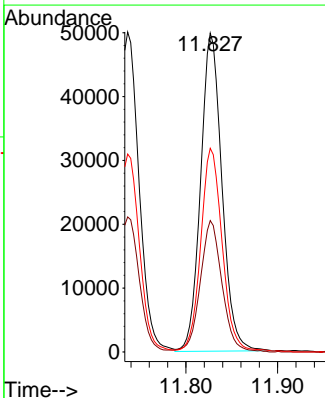
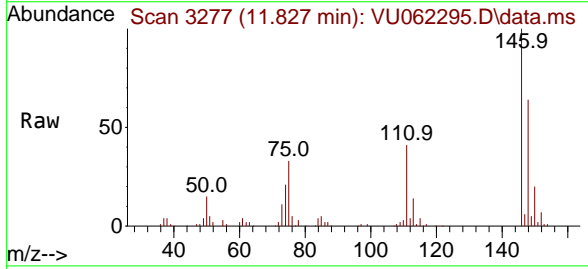


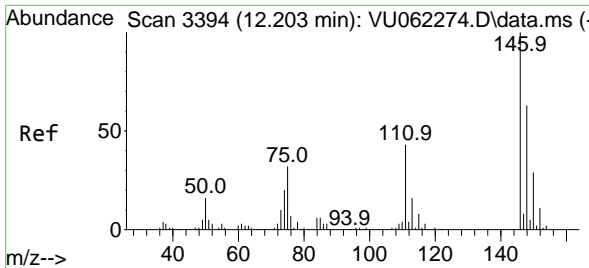
Tgt Ion:146 Resp: 81029
 Ion Ratio Lower Upper
 146 100
 111 42.2 30.7 57.1
 148 61.9 45.1 83.7



#65
 1,4-Dichlorobenzene
 Concen: 4.949 ug/L
 RT: 11.827 min Scan# 3277
 Delta R.T. -0.003 min
 Lab File: VU062295.D
 Acq: 12 Dec 2024 18:08

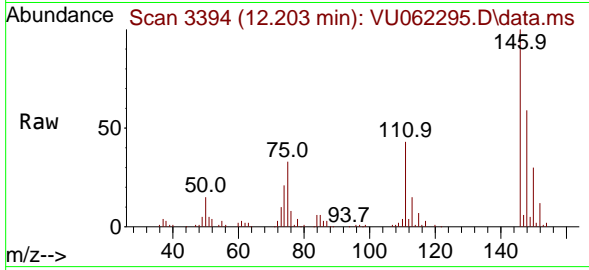
Tgt Ion:146 Resp: 80364
 Ion Ratio Lower Upper
 146 100
 111 41.2 29.3 54.3
 148 63.9 44.6 82.8



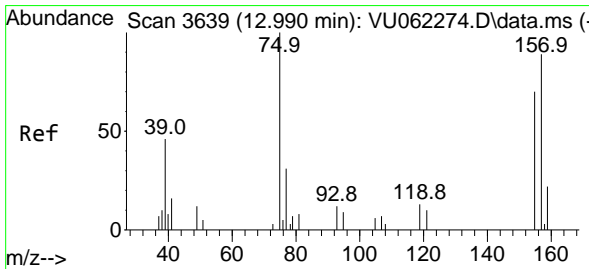
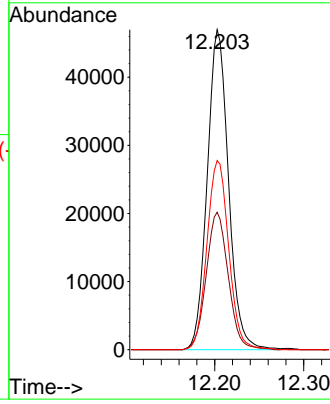
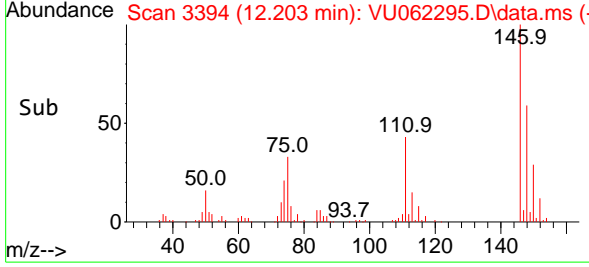


#67
 1,2-Dichlorobenzene
 Concen: 5.224 ug/L
 RT: 12.203 min Scan# 31
 Delta R.T. 0.000 min
 Lab File: VU062295.D
 Acq: 12 Dec 2024 18:08

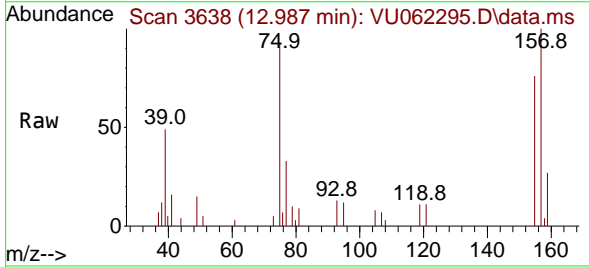
Instrument :
 MSVOA_U
 ClientSampleId :
 F7J35MSD



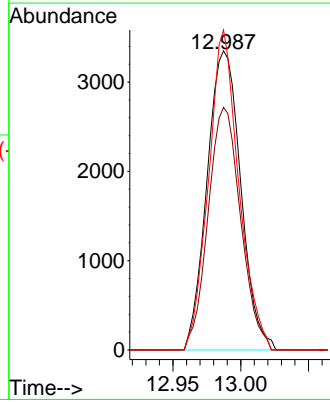
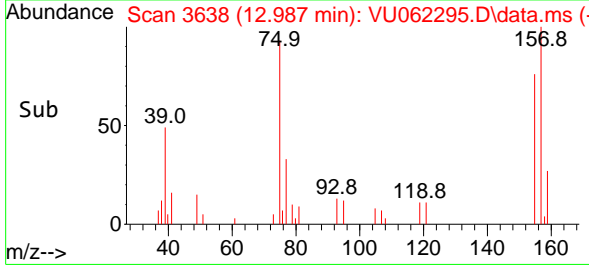
Tgt Ion:146 Resp: 77854
 Ion Ratio Lower Upper
 146 100
 111 42.9 36.0 54.0
 148 59.1 52.3 78.5

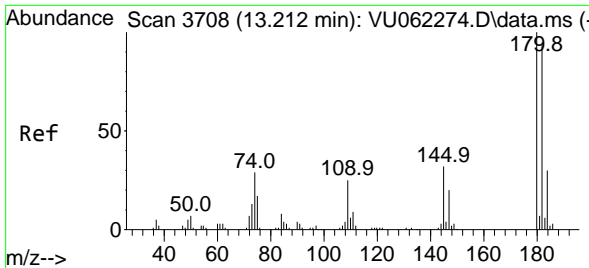


#68
 1,2-Dibromo-3-chloropropane
 Concen: 5.909 ug/L
 RT: 12.987 min Scan# 3638
 Delta R.T. -0.003 min
 Lab File: VU062295.D
 Acq: 12 Dec 2024 18:08



Tgt Ion: 75 Resp: 5792
 Ion Ratio Lower Upper
 75 100
 155 81.1 55.2 82.8
 157 107.0 73.5 110.3



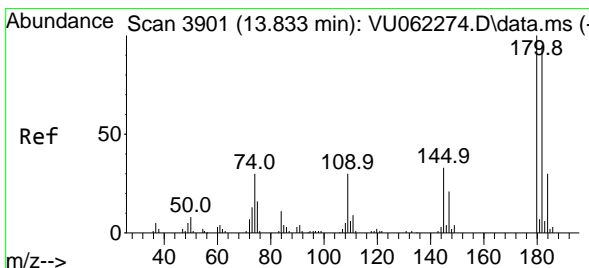
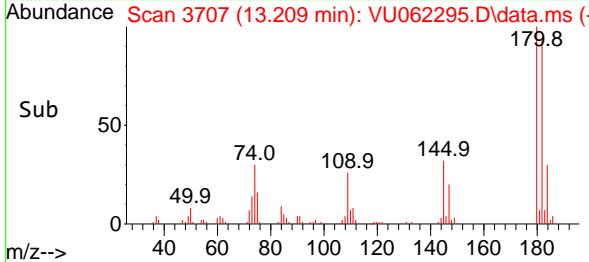
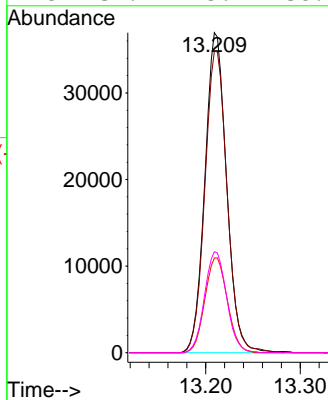
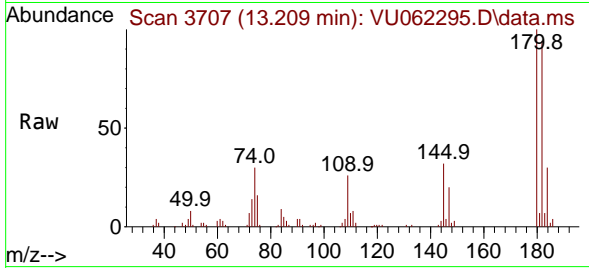


#69
 1,3,5-Trichlorobenzene
 Concen: 4.913 ug/L
 RT: 13.209 min Scan# 31
 Delta R.T. -0.003 min
 Lab File: VU062295.D
 Acq: 12 Dec 2024 18:08

Instrument :
 MSVOA_U
 ClientSampleId :
 F7J35MSD

Tgt Ion:180 Resp: 58899

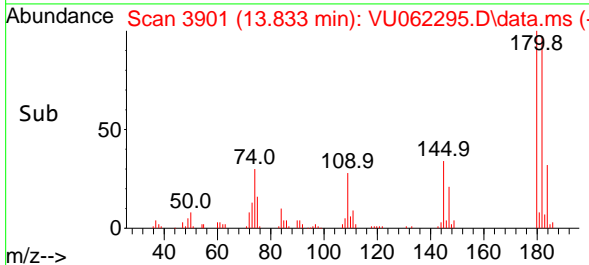
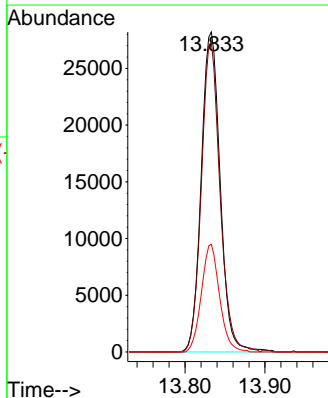
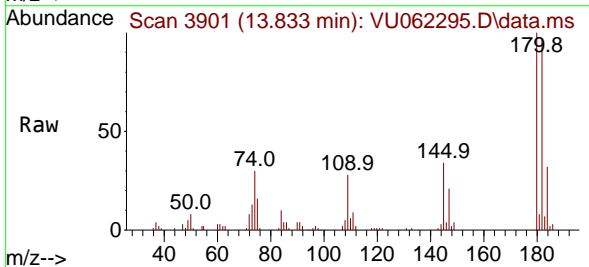
Ion	Ratio	Lower	Upper
180	100		
182	96.4	76.7	115.1
184	30.7	24.8	37.2
145	32.1	25.4	38.0

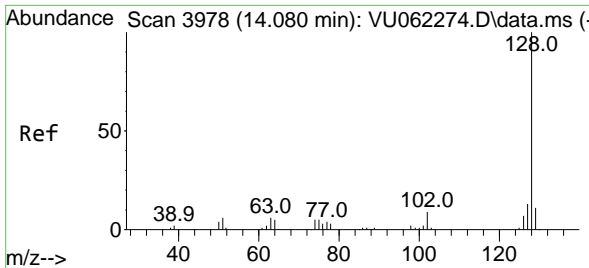


#70
 1,2,4-trichlorobenzene
 Concen: 4.916 ug/L
 RT: 13.833 min Scan# 3901
 Delta R.T. 0.000 min
 Lab File: VU062295.D
 Acq: 12 Dec 2024 18:08

Tgt Ion:180 Resp: 46529

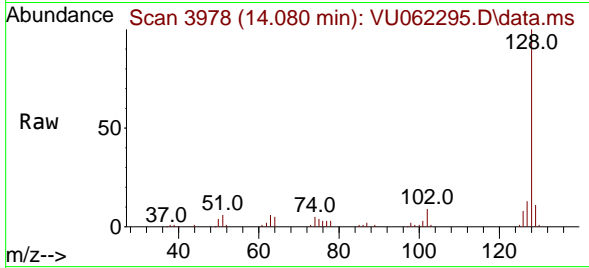
Ion	Ratio	Lower	Upper
180	100		
182	95.2	74.5	111.7
145	32.3	25.6	38.4



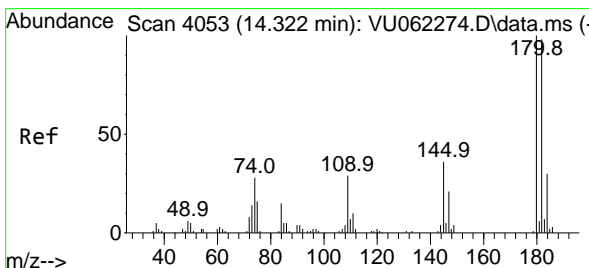
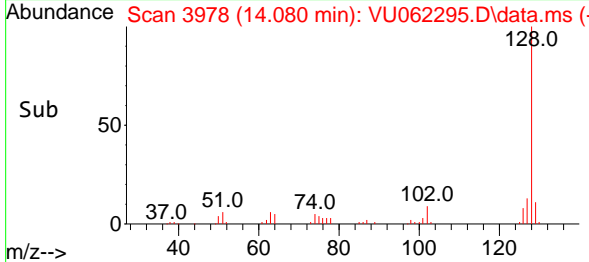
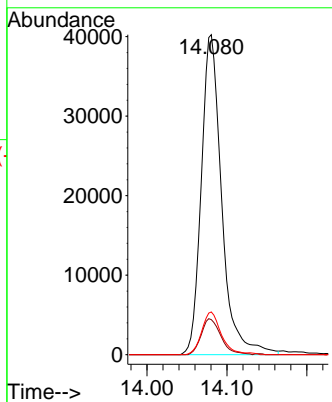


#71
 Naphthalene
 Concen: 5.036 ug/L
 RT: 14.080 min Scan# 3978
 Delta R.T. 0.000 min
 Lab File: VU062295.D
 Acq: 12 Dec 2024 18:08

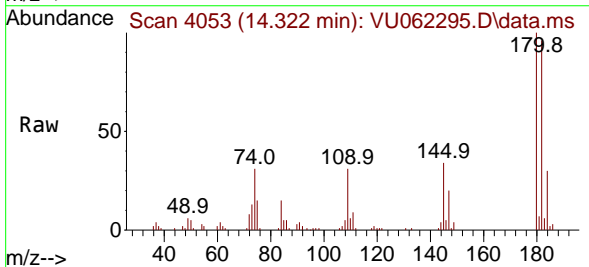
Instrument : MSVOA_U
 ClientSampleId : F7J35MSD



Tgt Ion:128 Resp: 71581
 Ion Ratio Lower Upper
 128 100
 129 10.8 8.5 12.7
 127 12.9 10.2 15.4



#72
 1,2,3-Trichlorobenzene
 Concen: 4.865 ug/L
 RT: 14.322 min Scan# 4053
 Delta R.T. 0.000 min
 Lab File: VU062295.D
 Acq: 12 Dec 2024 18:08



Tgt Ion:180 Resp: 40609
 Ion Ratio Lower Upper
 180 100
 182 97.4 76.1 114.1
 145 35.1 27.4 41.0

