

Data Path : Z:\voasrv\HPCHEM1\MSVOA_U\Data\VU121224\
 Data File : VU062294.D
 Acq On : 12 Dec 2024 17:44
 Operator : MD/SY
 Sample : P5253-11MS
 Misc : 25mL/MSVOA_U/WATER
 ALS Vial : 23 Sample Multiplier: 1

Instrument :
 MSVOA_U
 ClientSampleId :
 F7J35MS

Quant Time: Dec 13 00:19:42 2024
 Quant Method : Z:\voasrv\HPCHEM1\MSVOA_U\Method\SFAMUTR120924WMA.M
 Quant Title : TRACE VOA SFAM1.0
 QLast Update : Fri Dec 13 00:13:55 2024
 Response via : Initial Calibration

Compound	R.T.	QIon	Response	Conc	Units	Dev(Min)
Internal Standards						
1) 1,4-Difluorobenzene	6.242	114	82597	5.000	ug/L	0.00
28) Chlorobenzene-d5	9.409	117	76280	5.000	ug/L	0.00
58) 1,4-Dichlorobenzene-d4	11.804	152	39962	5.000	ug/L	0.00
System Monitoring Compounds						
4) Vinyl Chloride-d3	1.596	65	21831	3.918	ug/L	0.00
Spiked Amount	5.000	Range 40 - 130	Recovery	=	78.400%	
7) Chloroethane-d5	1.907	69	18034	4.551	ug/L	0.00
Spiked Amount	5.000	Range 65 - 130	Recovery	=	91.000%	
11) 1,1-Dichloroethene-d2	2.557	65	11511	4.343	ug/L	0.00
Spiked Amount	5.000	Range 60 - 125	Recovery	=	86.800%	
20) 2-Butanone-d5	4.624	46	63452	59.428	ug/L	0.00
Spiked Amount	50.000	Range 40 - 130	Recovery	=	118.860%	
24) Chloroform-d	5.052	84	64127	5.318	ug/L	0.00
Spiked Amount	5.000	Range 70 - 125	Recovery	=	106.400%	
26) 1,2-Dichloroethane-d4	5.692	65	32936	5.555	ug/L	0.00
Spiked Amount	5.000	Range 70 - 130	Recovery	=	111.000%	
32) Benzene-d6	5.718	84	108901	4.957	ug/L	0.00
Spiked Amount	5.000	Range 70 - 125	Recovery	=	99.200%	
36) 1,2-Dichloropropane-d6	6.682	67	32779	5.215	ug/L	0.00
Spiked Amount	5.000	Range 60 - 140	Recovery	=	104.200%	
41) Toluene-d8	7.888	98	100872	4.860	ug/L	0.00
Spiked Amount	5.000	Range 70 - 130	Recovery	=	97.200%	
43) trans-1,3-Dichloroprop...	8.171	79	13850	5.006	ug/L	0.00
Spiked Amount	5.000	Range 55 - 130	Recovery	=	100.200%	
46) 2-Hexanone-d5	8.624	63	49252	59.002	ug/L	0.00
Spiked Amount	50.000	Range 45 - 130	Recovery	=	118.000%	
56) 1,1,2,2-Tetrachloroeth...	10.746	84	28774	5.883	ug/L	0.00
Spiked Amount	5.000	Range 65 - 120	Recovery	=	117.600%	
66) 1,2-Dichlorobenzene-d4	12.184	152	38834	5.273	ug/L	0.00
Spiked Amount	5.000	Range 80 - 120	Recovery	=	105.400%	
Target Compounds						
2) Dichlorodifluoromethane	1.383	85	41445	5.357	ug/L	98
3) Chloromethane	1.515	50	35029	5.776	ug/L	100
5) Vinyl chloride	1.599	62	34419	5.451	ug/L	96
6) Bromomethane	1.853	94	20756	4.932	ug/L	96
8) Chloroethane	1.930	64	20198	5.711	ug/L	99
9) Trichlorofluoromethane	2.132	101	61100	5.575	ug/L	98
10) 1,1,2-Trichloro-1,2,2-...	2.573	101	31330	5.252	ug/L	90
12) 1,1-Dichloroethene	2.573	96	31870	5.715	ug/L	94
13) Acetone	2.641	43	46884	64.491	ug/L	95
14) Carbon disulfide	2.785	76	88012	4.991	ug/L	99
15) Methyl Acetate	2.949	43	10582	5.808	ug/L	90
16) Methylene chloride	3.036	84	36247	6.192	ug/L	89
17) Methyl tert-butyl Ether	3.354	73	86402	6.219	ug/L	97
18) trans-1,2-Dichloroethene	3.345	96	32337	5.644	ug/L	93
19) 1,1-Dichloroethane	3.859	63	61229	5.830	ug/L	99
21) 2-Butanone	4.705	43	70572	66.845	ug/L	98
22) cis-1,2-Dichloroethene	4.657	96	38218	5.951	ug/L	93
23) Bromochloromethane	4.965	128	17381	6.174	ug/L #	87
25) Chloroform	5.078	83	71382	6.034	ug/L	99

Data Path : Z:\voasrv\HPCHEM1\MSVOA_U\Data\VU121224\
 Data File : VU062294.D
 Acq On : 12 Dec 2024 17:44
 Operator : MD/SY
 Sample : P5253-11MS
 Misc : 25mL/MSVOA_U/WATER
 ALS Vial : 23 Sample Multiplier: 1

Instrument :
 MSVOA_U
 ClientSampleId :
 F7J35MS

Quant Time: Dec 13 00:19:42 2024
 Quant Method : Z:\voasrv\HPCHEM1\MSVOA_U\Method\SFAMUTR120924WMA.M
 Quant Title : TRACE VOA SFAM1.0
 QLast Update : Fri Dec 13 00:13:55 2024
 Response via : Initial Calibration

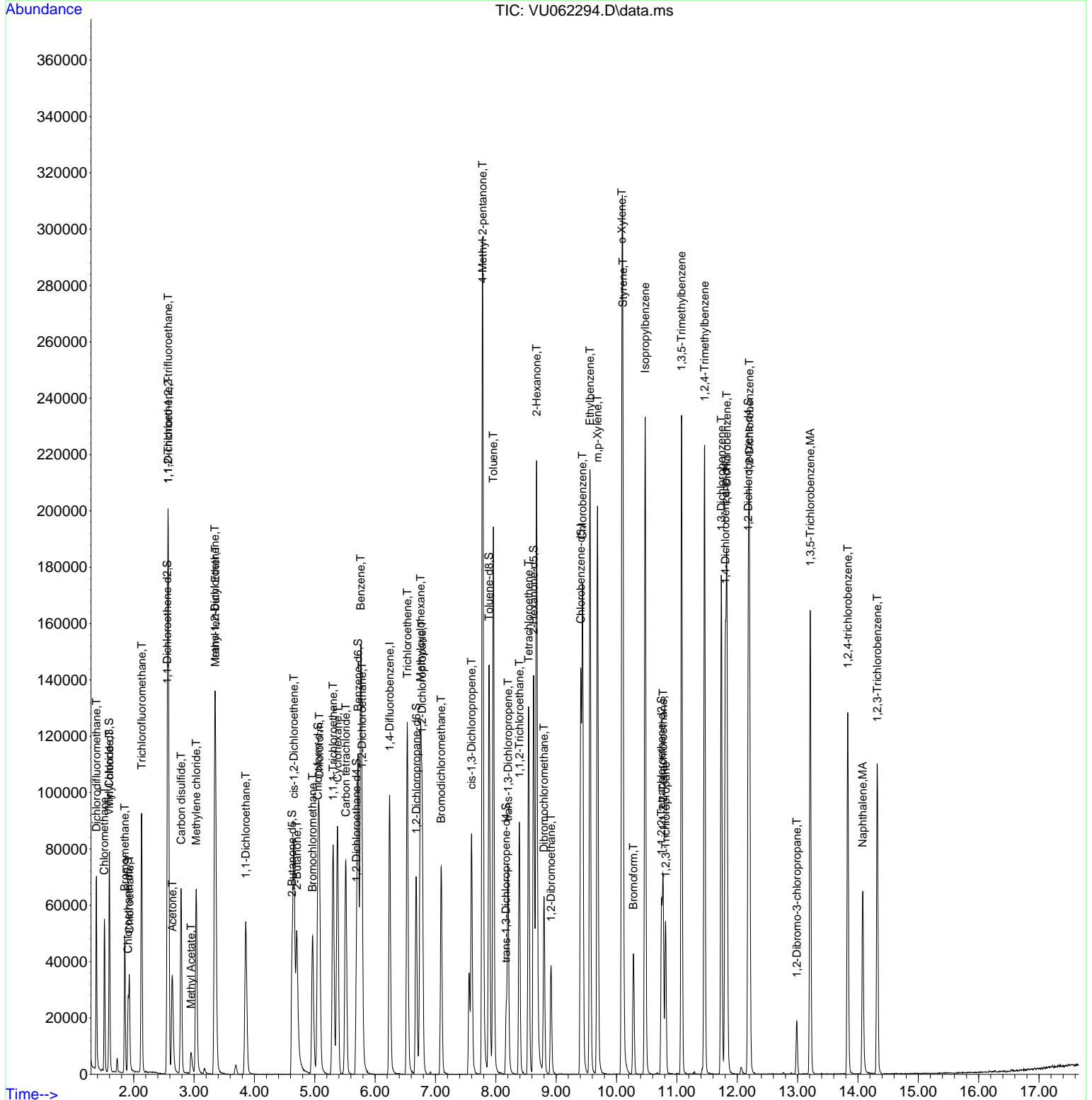
Compound	R.T.	QIon	Response	Conc	Units	Dev(Min)
27) 1,2-Dichloroethane	5.785	62	46434	6.176	ug/L	97
29) 1,1,1-Trichloroethane	5.306	97	62409	5.816	ug/L	95
30) Cyclohexane	5.377	56	42716	4.909	ug/L	91
31) Carbon tetrachloride	5.515	117	55653	5.656	ug/L	100
33) Benzene	5.763	78	136899	5.791	ug/L	100
34) Trichloroethene	6.534	95	44764	6.685	ug/L	96
35) Methylcyclohexane	6.753	83	49714	5.007	ug/L	94
37) 1,2-Dichloropropane	6.779	63	34539	6.000	ug/L	99
38) Bromodichloromethane	7.094	83	49630	6.111	ug/L #	98
39) cis-1,3-Dichloropropene	7.599	75	53471	5.795	ug/L	98
40) 4-Methyl-2-pentanone	7.782	43	176073	65.261	ug/L #	93
42) Toluene	7.959	91	145265	5.699	ug/L	94
44) trans-1,3-Dichloropropene	8.203	75	45850	6.085	ug/L	100
45) 1,1,2-Trichloroethane	8.389	97	28362	6.526	ug/L	99
47) Tetrachloroethene	8.544	164	28461	5.505	ug/L	97
48) 2-Hexanone	8.676	43	129795	65.096	ug/L #	92
49) Dibromochloromethane	8.798	129	34146	6.503	ug/L	97
50) 1,2-Dibromoethane	8.914	107	26681	6.389	ug/L #	98
51) Chlorobenzene	9.438	112	94211	5.768	ug/L	98
52) Ethylbenzene	9.560	91	154986	5.423	ug/L	99
53) m,p-Xylene	9.685	106	58794	5.572	ug/L	90
54) o-Xylene	10.090	106	58234	5.675	ug/L	100
55) Styrene	10.106	104	96044	5.678	ug/L	96
57) 1,1,2,2-Tetrachloroethane	10.772	83	32912	6.507	ug/L #	95
59) Bromoform	10.280	173	20979	6.680	ug/L	95
60) Isopropylbenzene	10.476	105	155318	5.380	ug/L	99
61) 1,2,3-Trichloropropane	10.814	75	23354	6.320	ug/L	97
62) 1,3,5-Trimethylbenzene	11.077	105	132495	5.423	ug/L	98
63) 1,2,4-Trimethylbenzene	11.460	105	127180	5.313	ug/L	100
64) 1,3-Dichlorobenzene	11.737	146	73181	5.519	ug/L	100
65) 1,4-Dichlorobenzene	11.827	146	71638	5.365	ug/L	98
67) 1,2-Dichlorobenzene	12.203	146	69693	5.687	ug/L	97
68) 1,2-Dibromo-3-chloropr...	12.987	75	5455	6.768	ug/L #	76
69) 1,3,5-Trichlorobenzene	13.209	180	52756	5.352	ug/L	99
70) 1,2,4-trichlorobenzene	13.833	180	40761	5.237	ug/L	99
71) Naphthalene	14.081	128	59713	5.110	ug/L	100
72) 1,2,3-Trichlorobenzene	14.322	180	35467	5.168	ug/L	98

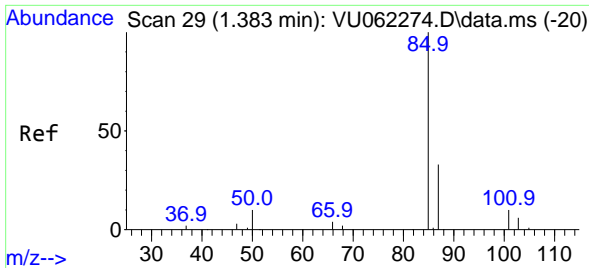
(#) = qualifier out of range (m) = manual integration (+) = signals summed

Data Path : Z:\voasrv\HPCHEM1\MSVOA_U\Data\VU121224\
 Data File : VU062294.D
 Acq On : 12 Dec 2024 17:44
 Operator : MD/SY
 Sample : P5253-11MS
 Misc : 25mL/MSVOA_U/WATER
 ALS Vial : 23 Sample Multiplier: 1

Instrument :
 MSVOA_U
 ClientSampleId :
 F7J35MS

Quant Time: Dec 13 00:19:42 2024
 Quant Method : Z:\voasrv\HPCHEM1\MSVOA_U\Method\SFAMUTR120924WMA.M
 Quant Title : TRACE VOA SFAM1.0
 QLast Update : Fri Dec 13 00:13:55 2024
 Response via : Initial Calibration

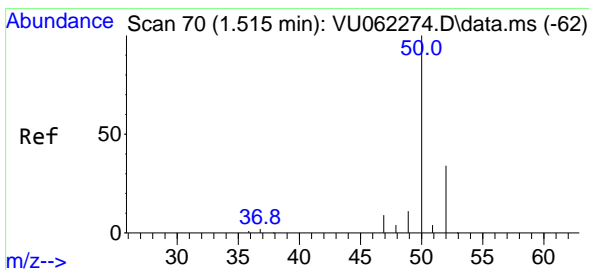
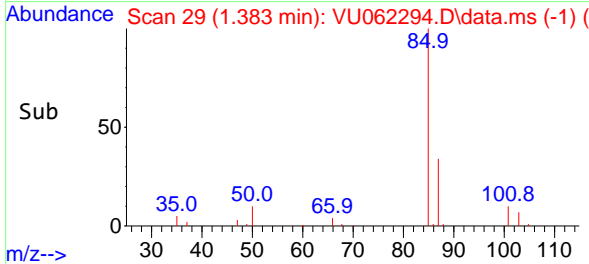
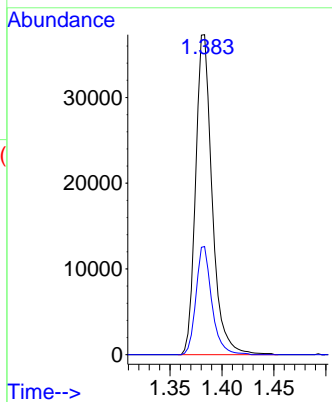
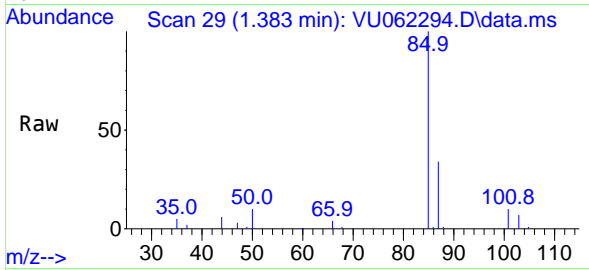




#2
 Dichlorodifluoromethane
 Concen: 5.357 ug/L
 RT: 1.383 min Scan# 29
 Delta R.T. 0.000 min
 Lab File: VU062294.D
 Acq: 12 Dec 2024 17:44

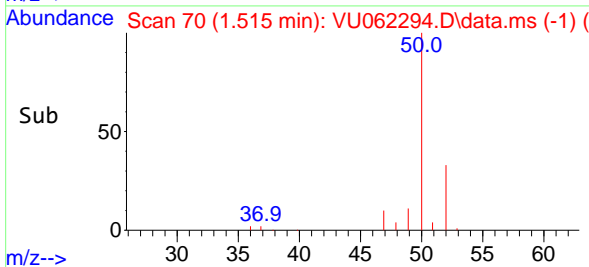
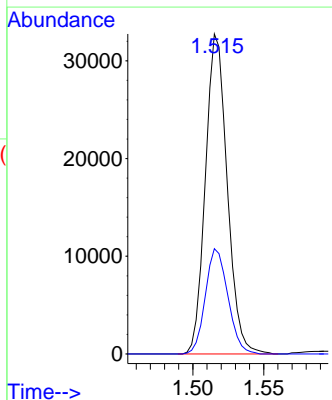
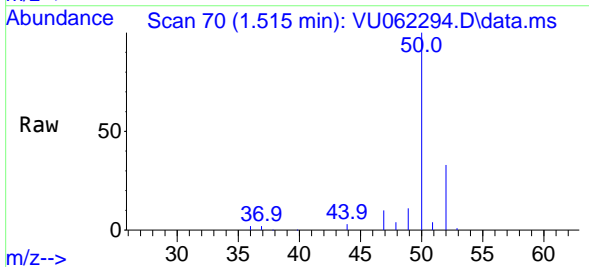
Instrument :
 MSVOA_U
 ClientSampleId :
 F7J35MS

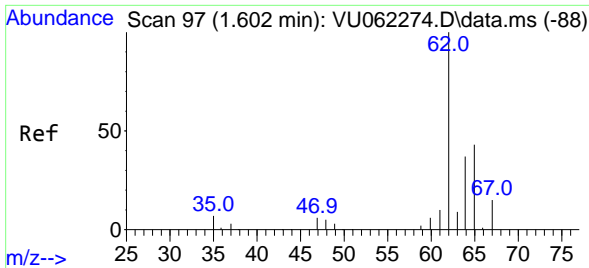
Tgt Ion: 85 Resp: 41445
 Ion Ratio Lower Upper
 85 100
 87 32.4 26.6 40.0



#3
 Chloromethane
 Concen: 5.776 ug/L
 RT: 1.515 min Scan# 70
 Delta R.T. 0.000 min
 Lab File: VU062294.D
 Acq: 12 Dec 2024 17:44

Tgt Ion: 50 Resp: 35029
 Ion Ratio Lower Upper
 50 100
 52 32.9 23.1 42.9

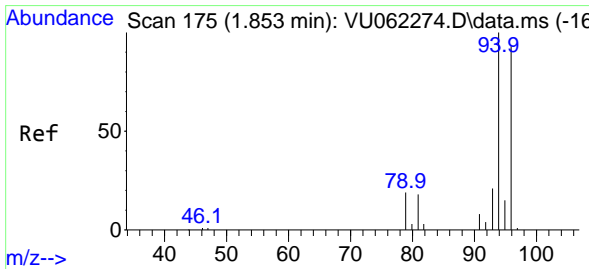
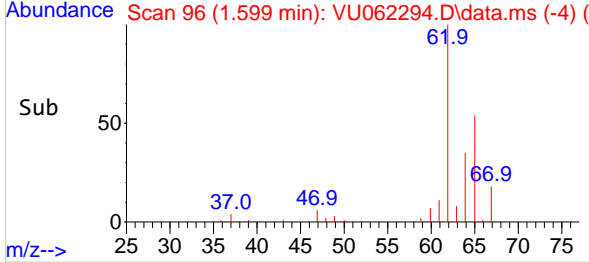
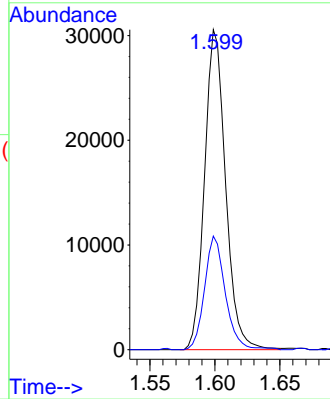
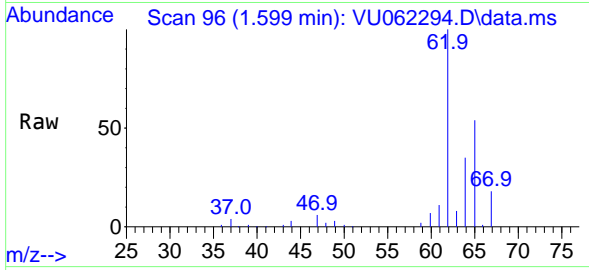




#5
 Vinyl chloride
 Concen: 5.451 ug/L
 RT: 1.599 min Scan# 90
 Delta R.T. -0.003 min
 Lab File: VU062294.D
 Acq: 12 Dec 2024 17:44

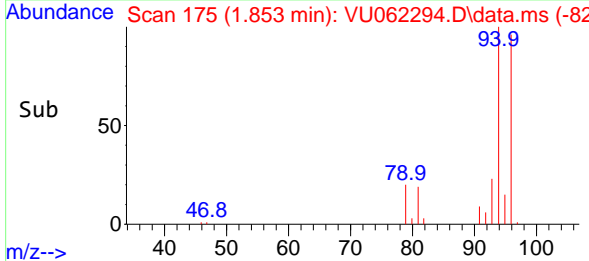
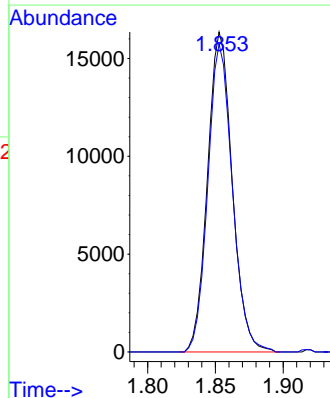
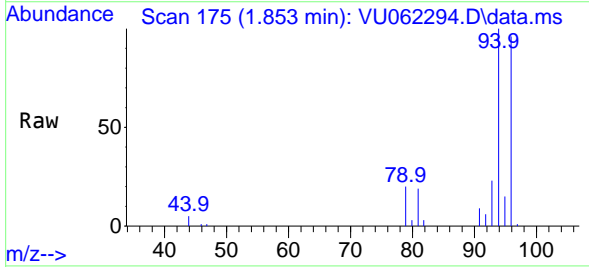
Instrument :
 MSVOA_U
 ClientSampleId :
 F7J35MS

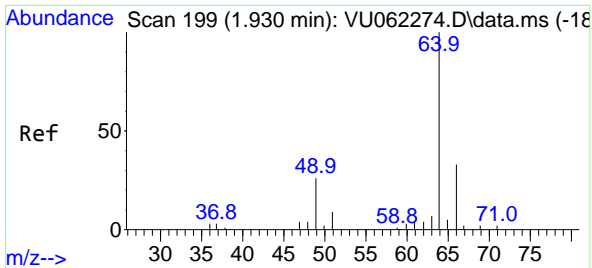
Tgt Ion: 62 Resp: 34419
 Ion Ratio Lower Upper
 62 100
 64 35.5 23.1 42.9



#6
 Bromomethane
 Concen: 4.932 ug/L
 RT: 1.853 min Scan# 175
 Delta R.T. 0.000 min
 Lab File: VU062294.D
 Acq: 12 Dec 2024 17:44

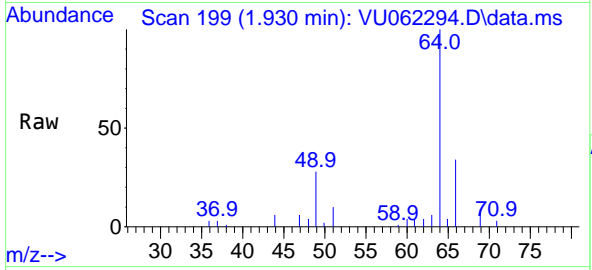
Tgt Ion: 94 Resp: 20756
 Ion Ratio Lower Upper
 94 100
 96 96.3 64.5 119.9



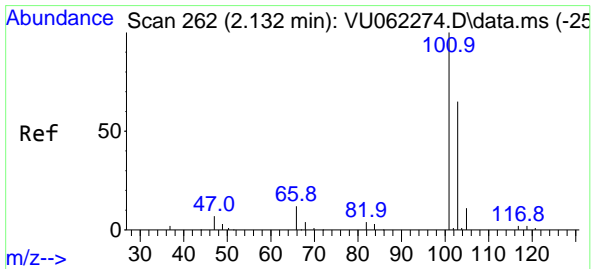
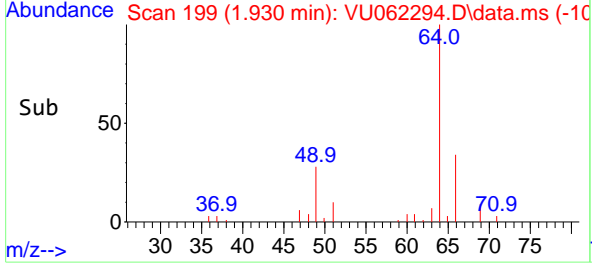
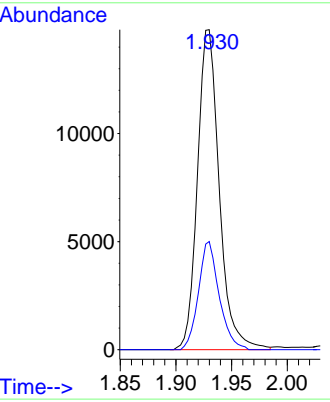


#8
 Chloroethane
 Concen: 5.711 ug/L
 RT: 1.930 min Scan# 199
 Delta R.T. 0.000 min
 Lab File: VU062294.D
 Acq: 12 Dec 2024 17:44

Instrument : MSVOA_U
 ClientSampleId : F7J35MS

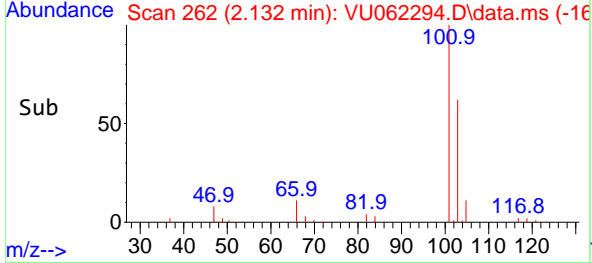
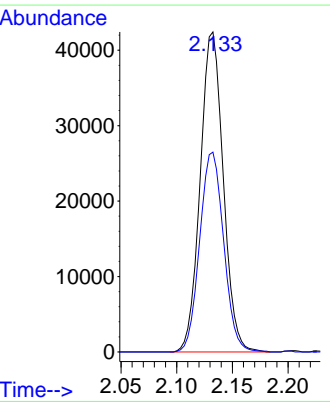
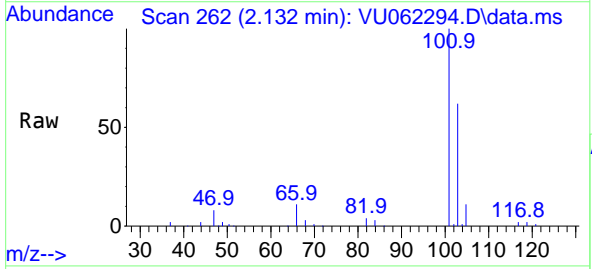


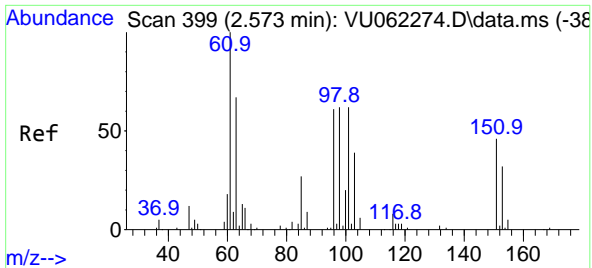
Tgt Ion: 64 Resp: 20198
 Ion Ratio Lower Upper
 64 100
 66 33.8 23.2 43.2



#9
 Trichlorofluoromethane
 Concen: 5.575 ug/L
 RT: 2.132 min Scan# 262
 Delta R.T. 0.000 min
 Lab File: VU062294.D
 Acq: 12 Dec 2024 17:44

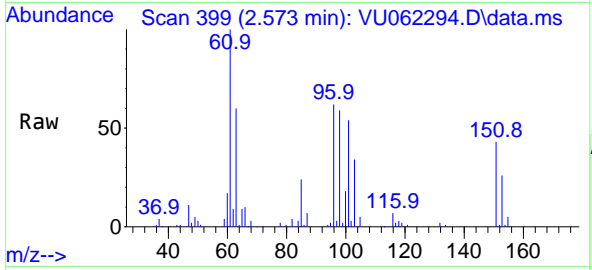
Tgt Ion: 101 Resp: 61100
 Ion Ratio Lower Upper
 101 100
 103 64.9 50.6 75.8



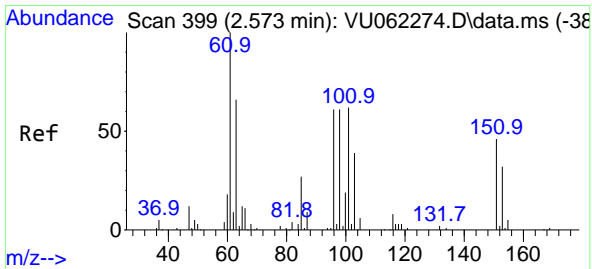
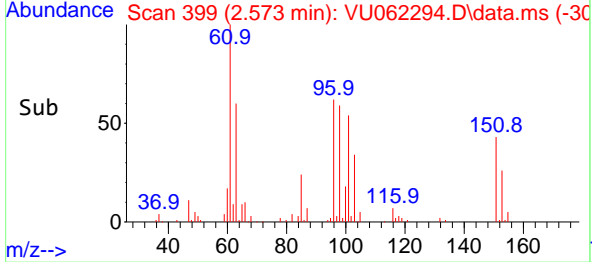
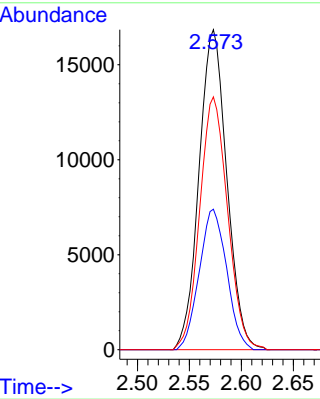


#10
 1,1,2-Trichloro-1,2,2-trifluoroethane
 Concen: 5.252 ug/L
 RT: 2.573 min Scan# 399
 Delta R.T. 0.000 min
 Lab File: VU062294.D
 Acq: 12 Dec 2024 17:44

Instrument :
 MSVOA_U
 ClientSampleId :
 F7J35MS

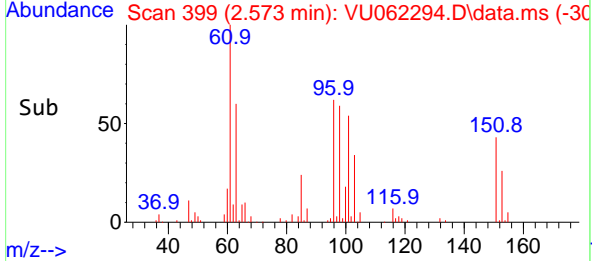
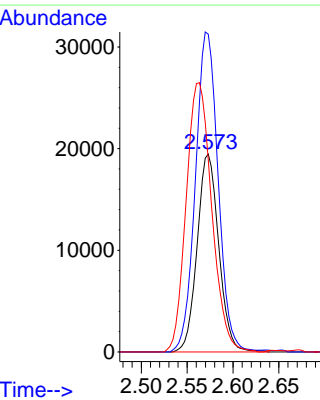
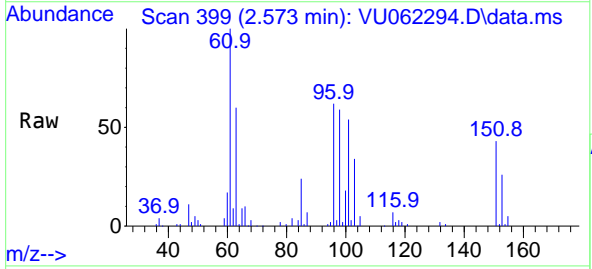


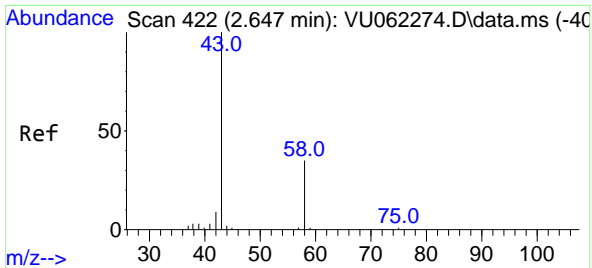
Tgt Ion:101 Resp: 31330
 Ion Ratio Lower Upper
 101 100
 85 43.4 38.0 57.0
 151 79.3 55.3 82.9



#12
 1,1-Dichloroethene
 Concen: 5.715 ug/L
 RT: 2.573 min Scan# 399
 Delta R.T. 0.000 min
 Lab File: VU062294.D
 Acq: 12 Dec 2024 17:44

Tgt Ion: 96 Resp: 31870
 Ion Ratio Lower Upper
 96 100
 61 160.6 119.6 222.2
 63 97.1 65.0 120.6

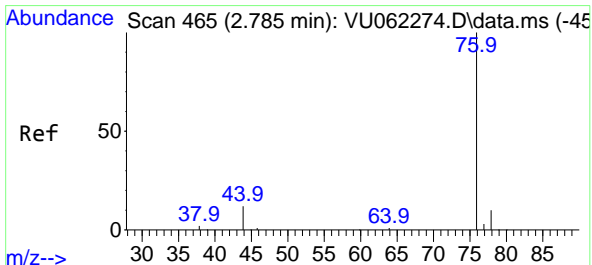
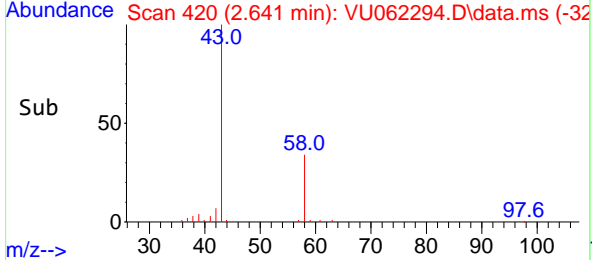
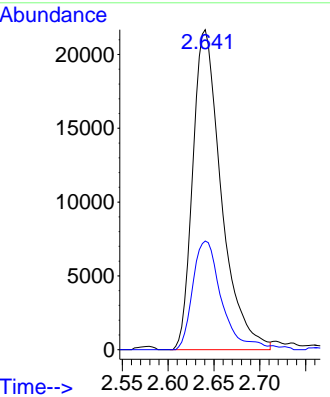
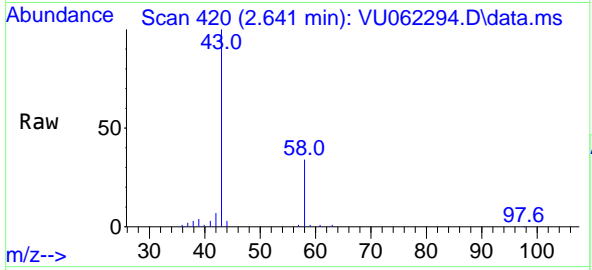




#13
 Acetone
 Concen: 64.491 ug/L
 RT: 2.641 min Scan# 41
 Delta R.T. -0.006 min
 Lab File: VU062294.D
 Acq: 12 Dec 2024 17:44

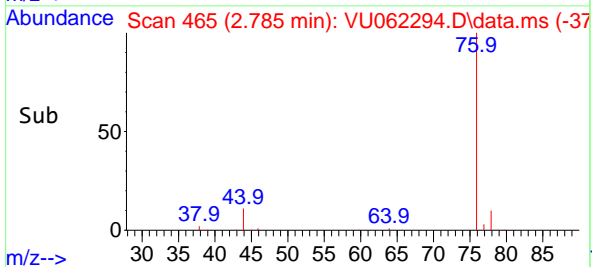
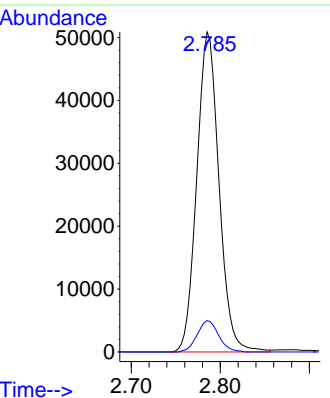
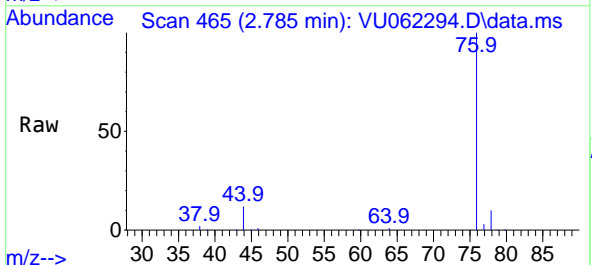
Instrument : MSVOA_U
 ClientSampleId : F7J35MS

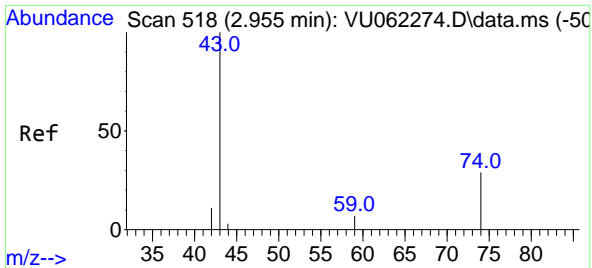
Tgt Ion: 43 Resp: 46884
 Ion Ratio Lower Upper
 43 100
 58 34.8 0.0 64.0



#14
 Carbon disulfide
 Concen: 4.991 ug/L
 RT: 2.785 min Scan# 465
 Delta R.T. 0.000 min
 Lab File: VU062294.D
 Acq: 12 Dec 2024 17:44

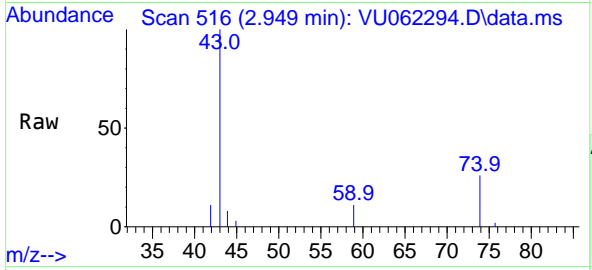
Tgt Ion: 76 Resp: 88012
 Ion Ratio Lower Upper
 76 100
 78 9.8 7.5 11.3



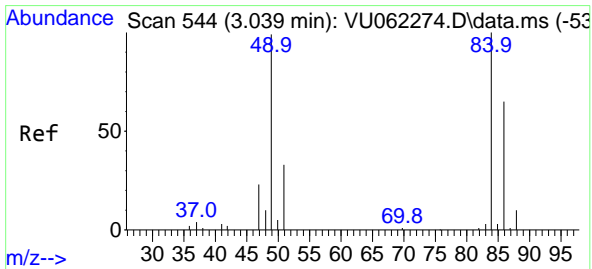
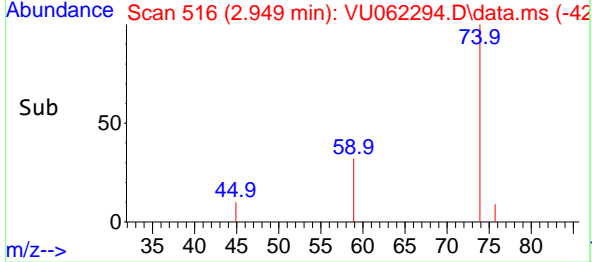
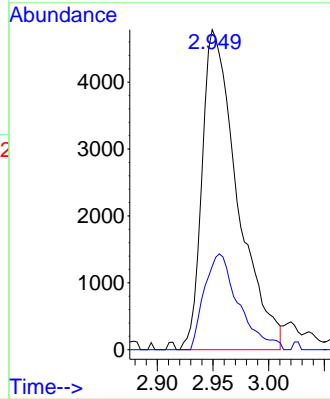


#15
Methyl Acetate
Concen: 5.808 ug/L
RT: 2.949 min Scan# 518
Delta R.T. -0.006 min
Lab File: VU062294.D
Acq: 12 Dec 2024 17:44

Instrument : MSVOA_U
Client SampleId : F7J35MS

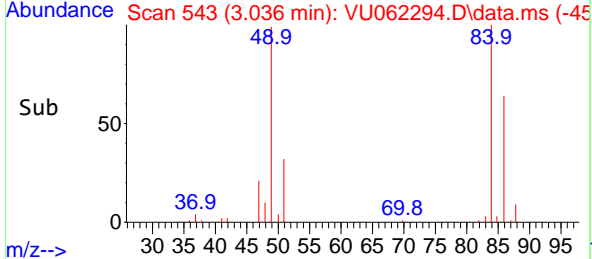
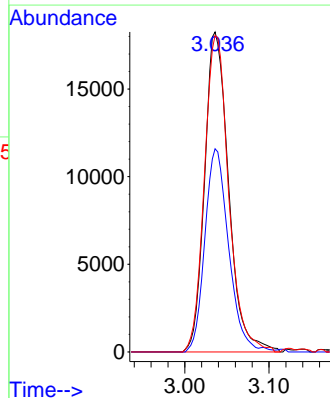
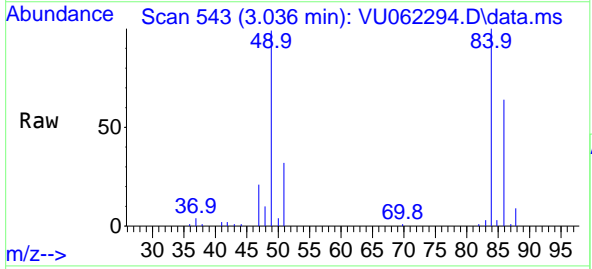


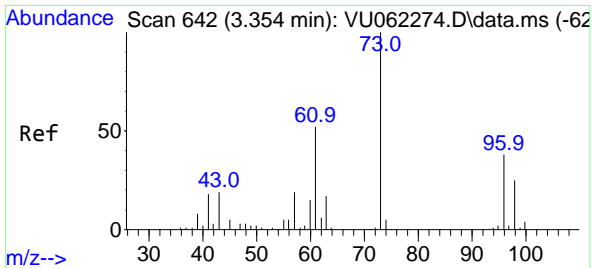
Tgt Ion: 43 Resp: 10582
Ion Ratio Lower Upper
43 100
74 29.1 19.4 29.2



#16
Methylene chloride
Concen: 6.192 ug/L
RT: 3.036 min Scan# 543
Delta R.T. -0.003 min
Lab File: VU062294.D
Acq: 12 Dec 2024 17:44

Tgt Ion: 84 Resp: 36247
Ion Ratio Lower Upper
84 100
86 63.5 43.5 80.7
49 98.9 81.9 152.1



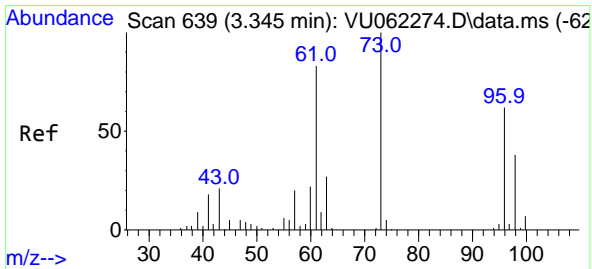
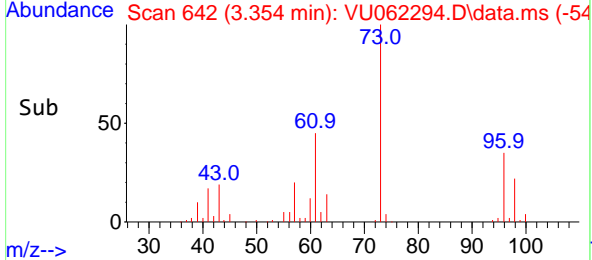
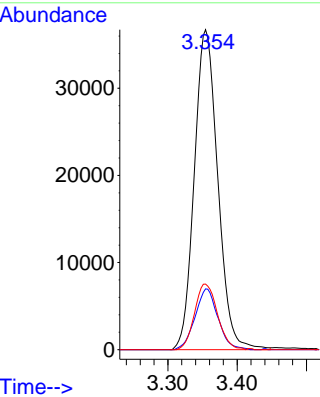
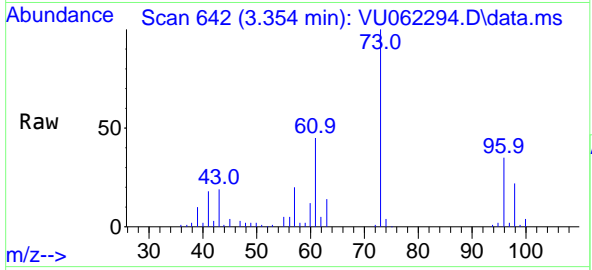


#17
 Methyl tert-butyl Ether
 Concen: 6.219 ug/L
 RT: 3.354 min Scan# 642
 Delta R.T. 0.000 min
 Lab File: VU062294.D
 Acq: 12 Dec 2024 17:44

Instrument : MSVOA_U
 ClientSampleId : F7J35MS

Tgt Ion: 73 Resp: 86402

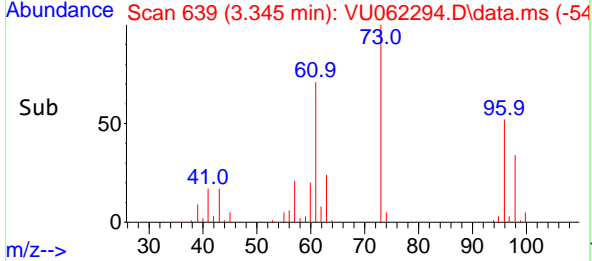
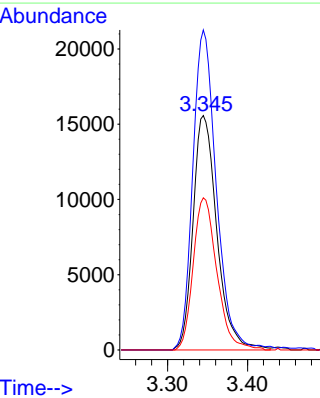
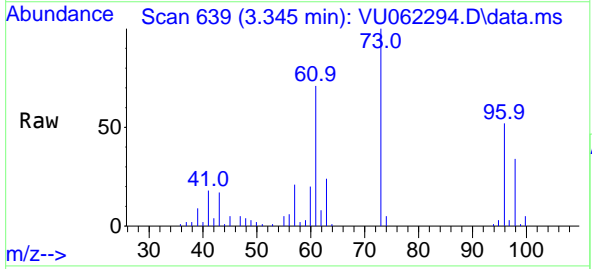
Ion	Ratio	Lower	Upper
73	100		
43	18.5	16.3	24.5
57	20.1	17.1	25.7

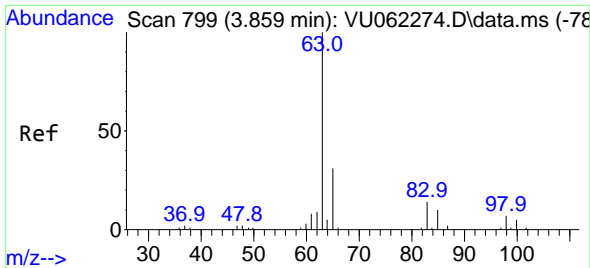


#18
 trans-1,2-Dichloroethene
 Concen: 5.644 ug/L
 RT: 3.345 min Scan# 639
 Delta R.T. 0.000 min
 Lab File: VU062294.D
 Acq: 12 Dec 2024 17:44

Tgt Ion: 96 Resp: 32337

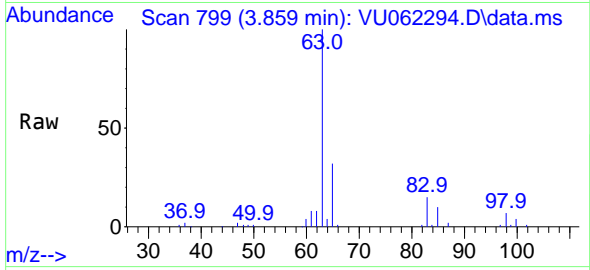
Ion	Ratio	Lower	Upper
96	100		
61	136.5	104.2	193.4
98	65.0	45.7	84.9



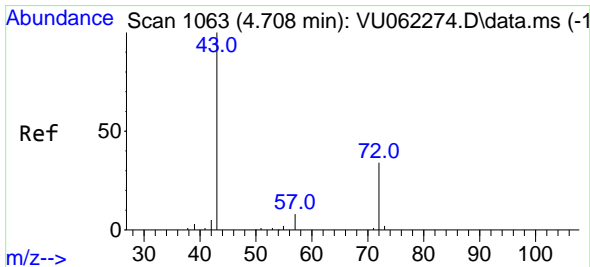
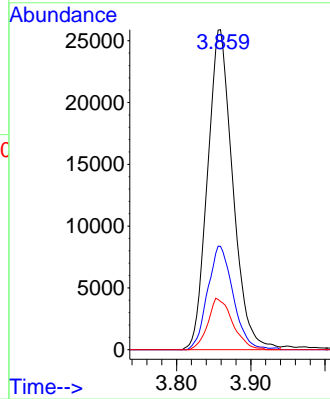
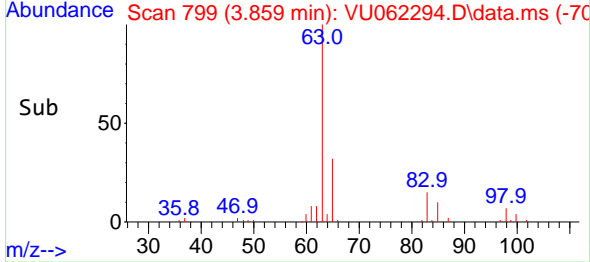


#19
 1,1-Dichloroethane
 Concen: 5.830 ug/L
 RT: 3.859 min Scan# 799
 Delta R.T. 0.000 min
 Lab File: VU062294.D
 Acq: 12 Dec 2024 17:44

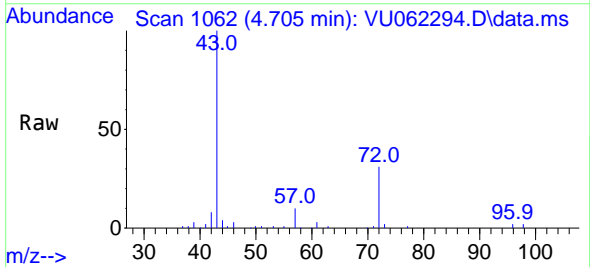
Instrument : MSVOA_U
 ClientSampleId : F7J35MS



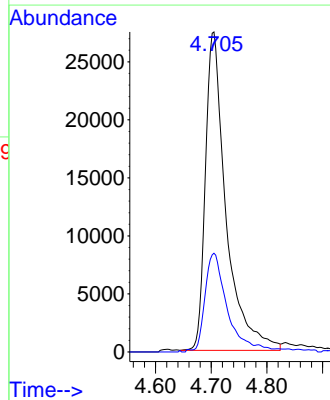
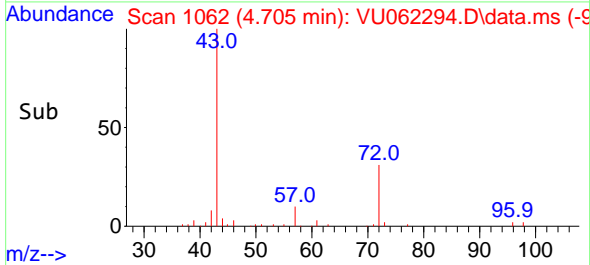
Tgt Ion: 63 Resp: 61229
 Ion Ratio Lower Upper
 63 100
 65 32.3 22.7 42.3
 83 15.1 9.9 18.3

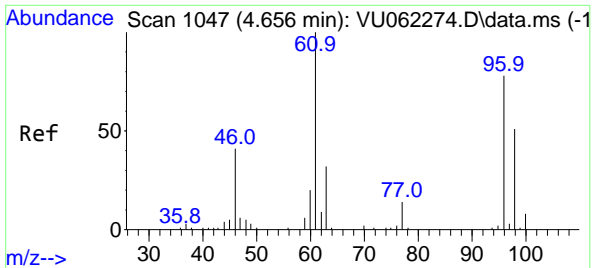


#21
 2-Butanone
 Concen: 66.845 ug/L
 RT: 4.705 min Scan# 1062
 Delta R.T. -0.003 min
 Lab File: VU062294.D
 Acq: 12 Dec 2024 17:44



Tgt Ion: 43 Resp: 70572
 Ion Ratio Lower Upper
 43 100
 72 30.6 14.8 44.4



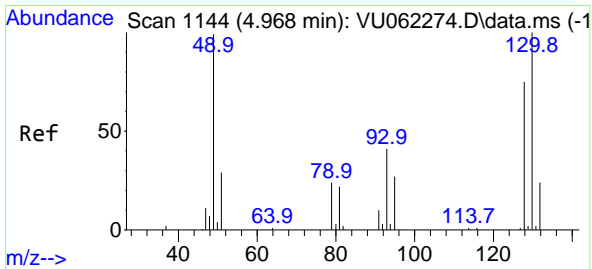
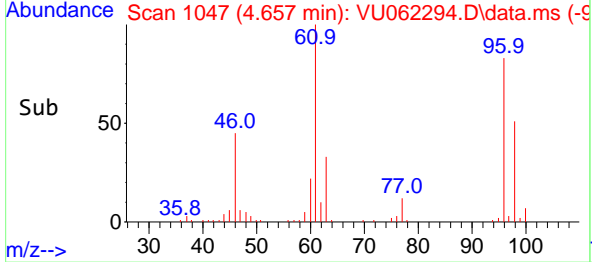
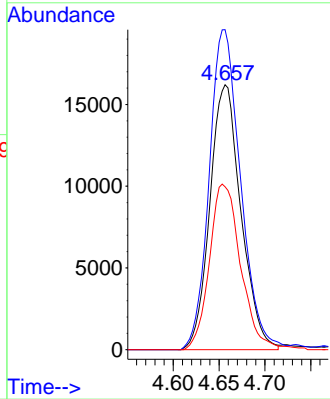
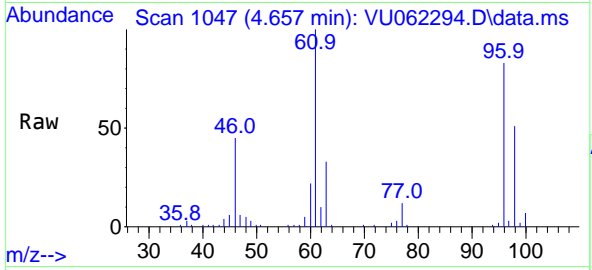


#22
 cis-1,2-Dichloroethene
 Concen: 5.951 ug/L
 RT: 4.657 min Scan# 1047
 Delta R.T. 0.000 min
 Lab File: VU062294.D
 Acq: 12 Dec 2024 17:44

Instrument : MSVOA_U
 ClientSampleId : F7J35MS

Tgt Ion: 96 Resp: 38218

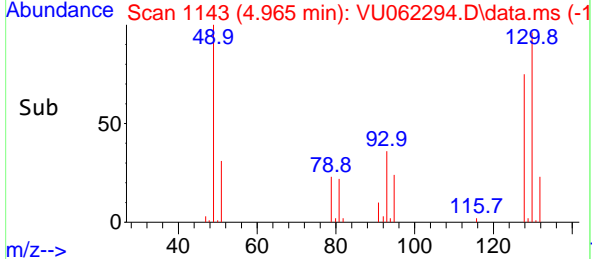
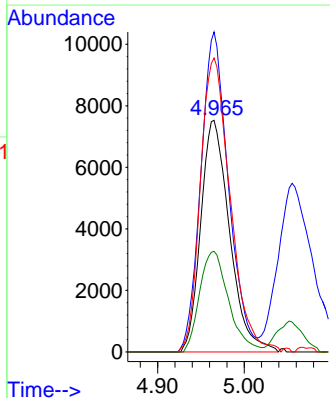
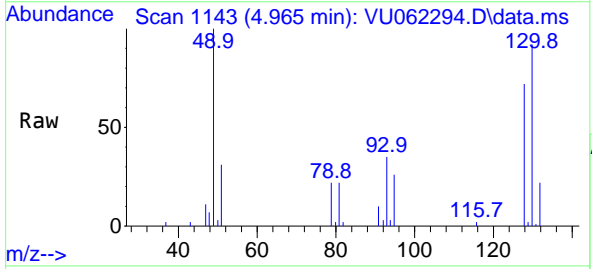
Ion	Ratio	Lower	Upper
96	100		
61	120.7	92.0	170.8
98	61.5	44.5	82.7

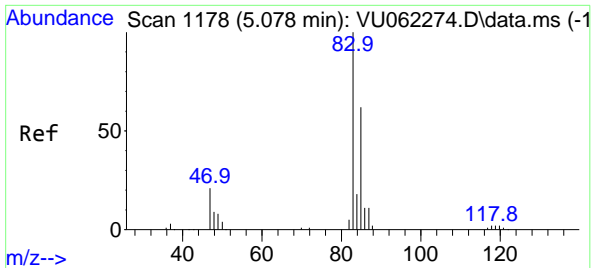


#23
 Bromochloromethane
 Concen: 6.174 ug/L
 RT: 4.965 min Scan# 1143
 Delta R.T. -0.003 min
 Lab File: VU062294.D
 Acq: 12 Dec 2024 17:44

Tgt Ion: 128 Resp: 17381

Ion	Ratio	Lower	Upper
128	100		
49	138.1	115.3	214.1
130	126.8	92.0	170.8
51	43.4	44.7	67.1

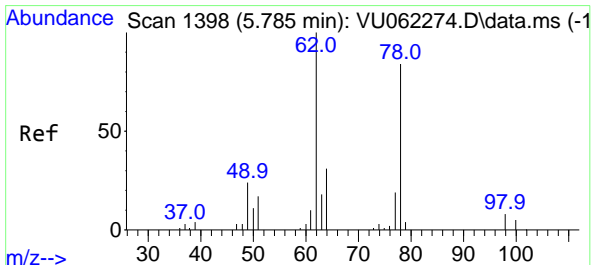
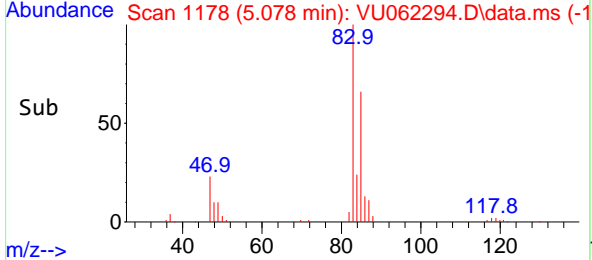
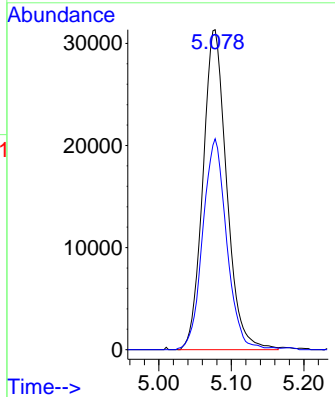
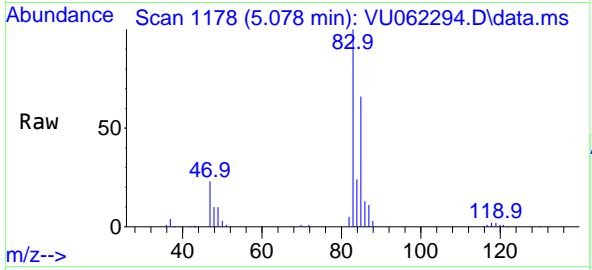




#25
 Chloroform
 Concen: 6.034 ug/L
 RT: 5.078 min Scan# 1178
 Delta R.T. 0.000 min
 Lab File: VU062294.D
 Acq: 12 Dec 2024 17:44

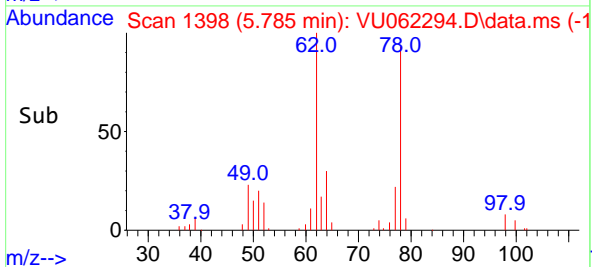
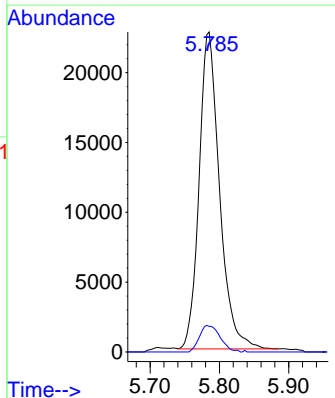
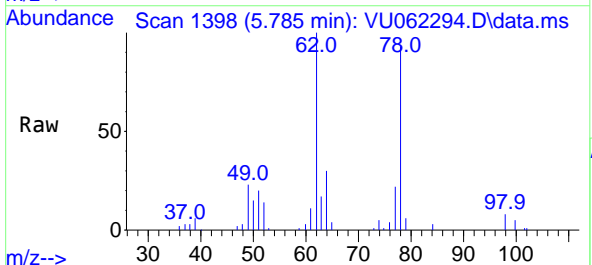
Instrument : MSVOA_U
 ClientSampleId : F7J35MS

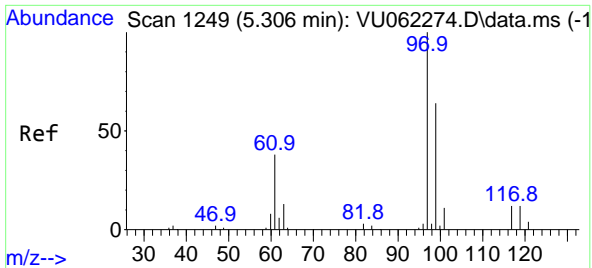
Tgt Ion: 83 Resp: 71382
 Ion Ratio Lower Upper
 83 100
 85 65.9 45.4 84.2



#27
 1,2-Dichloroethane
 Concen: 6.176 ug/L
 RT: 5.785 min Scan# 1398
 Delta R.T. 0.000 min
 Lab File: VU062294.D
 Acq: 12 Dec 2024 17:44

Tgt Ion: 62 Resp: 46434
 Ion Ratio Lower Upper
 62 100
 98 8.0 7.4 11.0

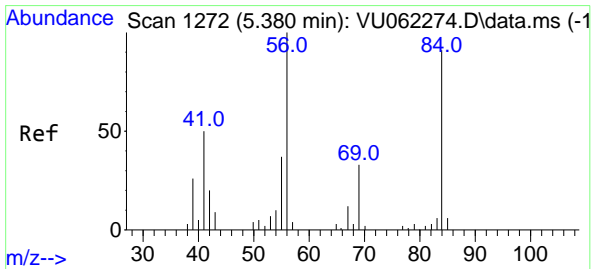
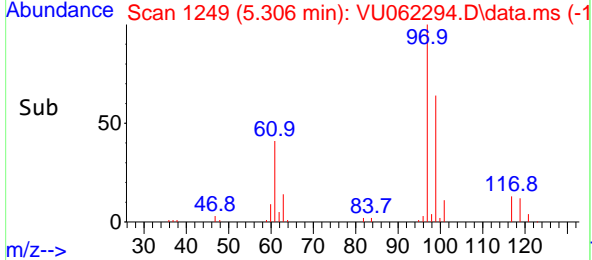
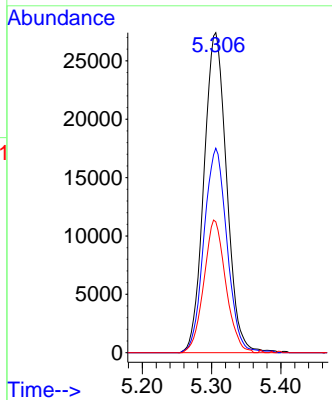
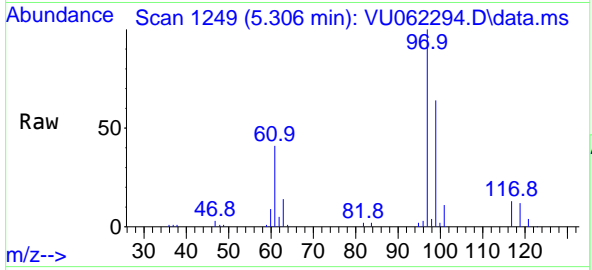




#29
 1,1,1-Trichloroethane
 Concen: 5.816 ug/L
 RT: 5.306 min Scan# 11
 Delta R.T. 0.000 min
 Lab File: VU062294.D
 Acq: 12 Dec 2024 17:44

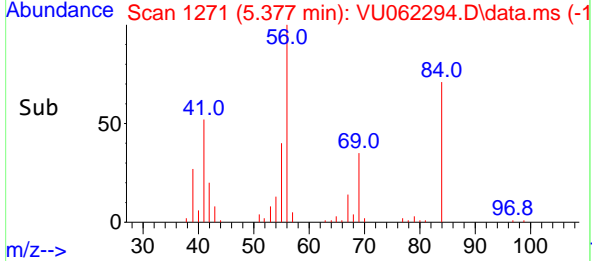
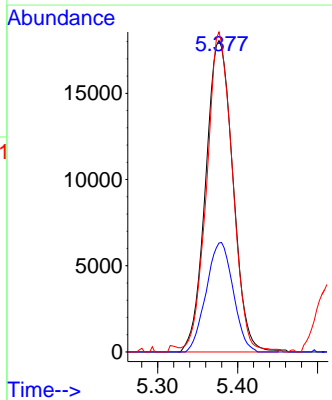
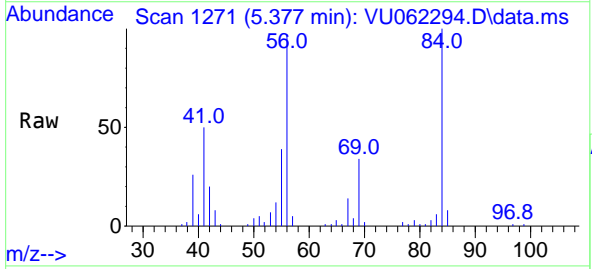
Instrument : MSVOA_U
 Client Sample Id : F7J35MS

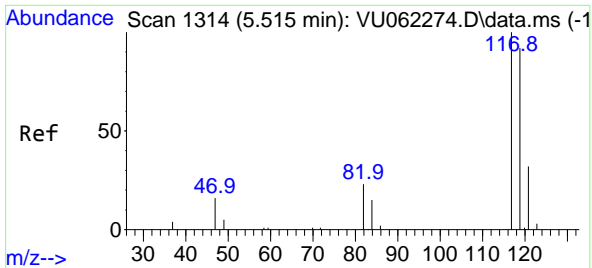
Tgt Ion	Resp	Lower	Upper
97	62409		
97	100		
99	64.9	51.4	77.2
61	40.0	37.8	56.6



#30
 Cyclohexane
 Concen: 4.909 ug/L
 RT: 5.377 min Scan# 1271
 Delta R.T. -0.003 min
 Lab File: VU062294.D
 Acq: 12 Dec 2024 17:44

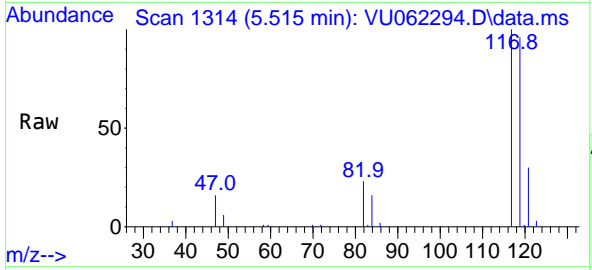
Tgt Ion	Resp	Lower	Upper
56	42716		
56	100		
69	34.6	25.1	37.7
84	97.3	70.6	105.8



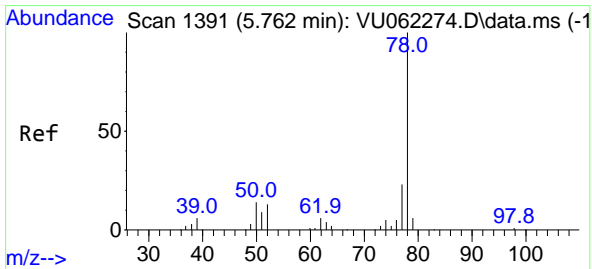
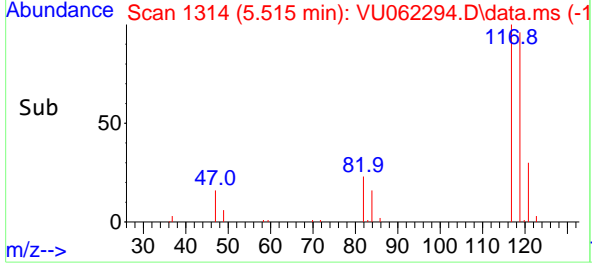
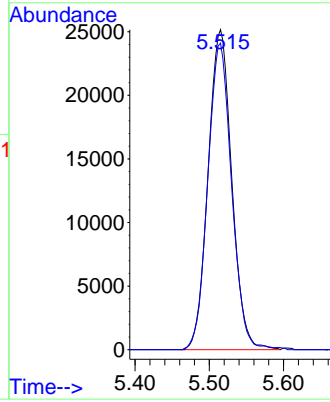


#31
 Carbon tetrachloride
 Concen: 5.656 ug/L
 RT: 5.515 min Scan# 1117
 Delta R.T. 0.000 min
 Lab File: VU062294.D
 Acq: 12 Dec 2024 17:44

Instrument : MSVOA_U
 ClientSampleId : F7J35MS

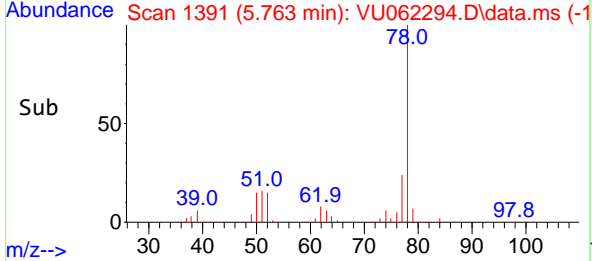
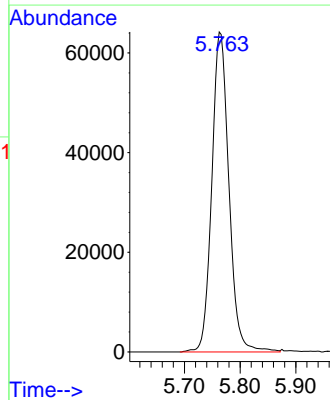
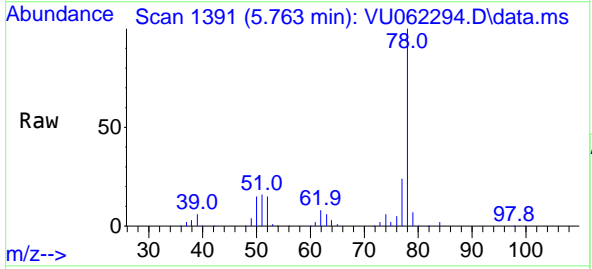


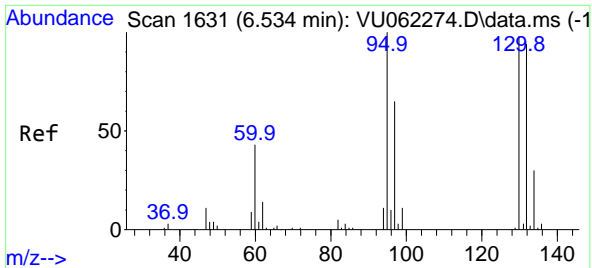
Tgt Ion:117 Resp: 55653
 Ion Ratio Lower Upper
 117 100
 119 96.4 77.5 116.3



#33
 Benzene
 Concen: 5.791 ug/L
 RT: 5.763 min Scan# 1391
 Delta R.T. 0.000 min
 Lab File: VU062294.D
 Acq: 12 Dec 2024 17:44

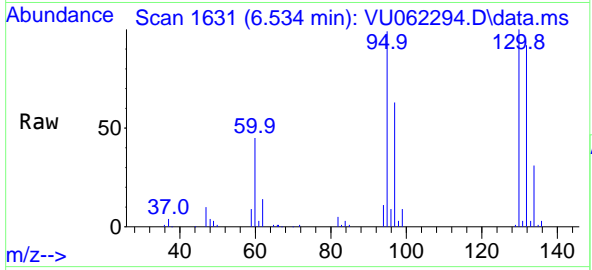
Tgt Ion: 78 Resp: 136899





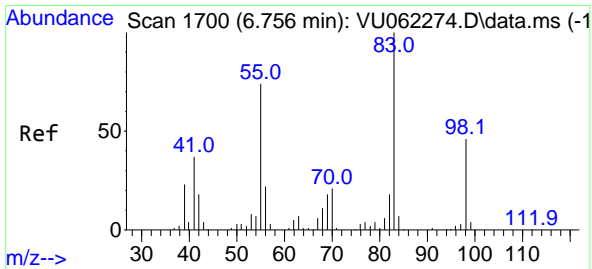
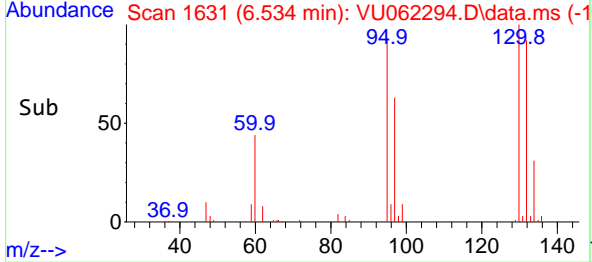
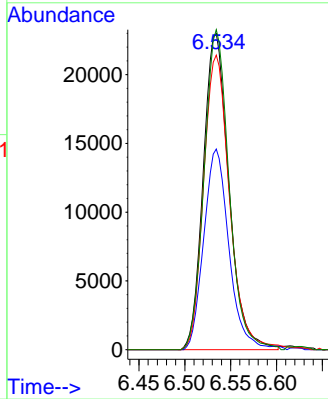
#34
 Trichloroethene
 Concen: 6.685 ug/L
 RT: 6.534 min Scan# 1699
 Delta R.T. 0.000 min
 Lab File: VU062294.D
 Acq: 12 Dec 2024 17:44

Instrument : MSVOA_U
 ClientSampleId : F7J35MS

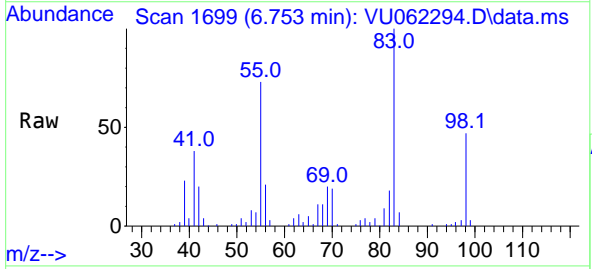


Tgt Ion: 95 Resp: 44764

Ion	Ratio	Lower	Upper
95	100		
97	63.5	45.9	85.3
132	93.2	63.8	118.4
130	101.2	65.5	121.7

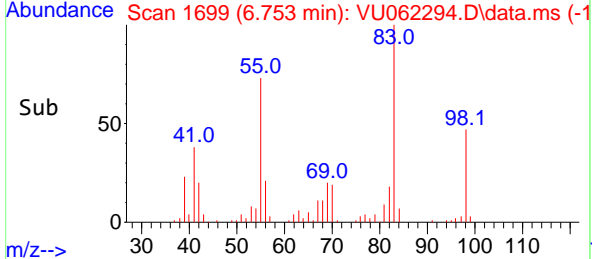
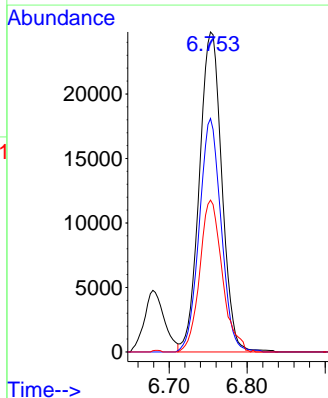


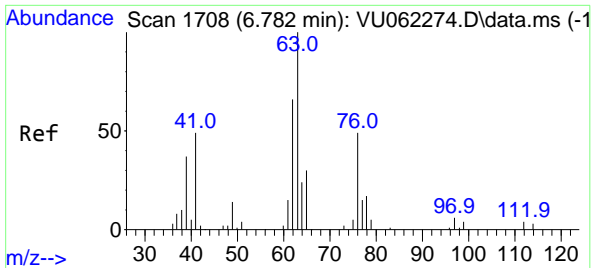
#35
 Methylcyclohexane
 Concen: 5.007 ug/L
 RT: 6.753 min Scan# 1699
 Delta R.T. -0.003 min
 Lab File: VU062294.D
 Acq: 12 Dec 2024 17:44



Tgt Ion: 83 Resp: 49714

Ion	Ratio	Lower	Upper
83	100		
55	71.0	60.7	91.1
98	47.6	34.8	52.2

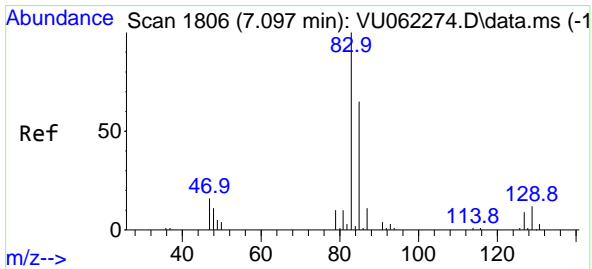
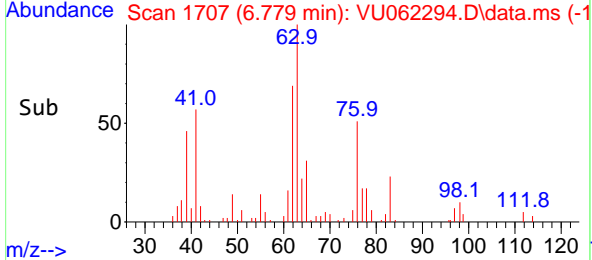
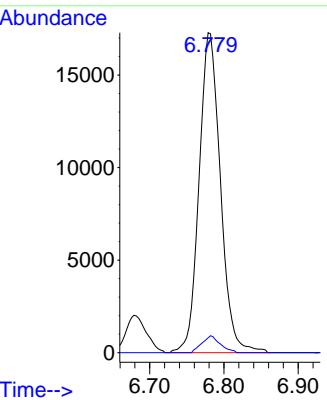
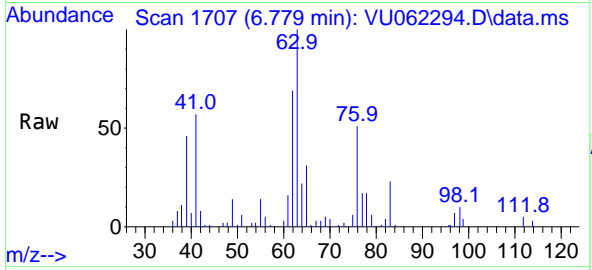




#37
 1,2-Dichloropropane
 Concen: 6.000 ug/L
 RT: 6.779 min Scan# 11
 Delta R.T. -0.003 min
 Lab File: VU062294.D
 Acq: 12 Dec 2024 17:44

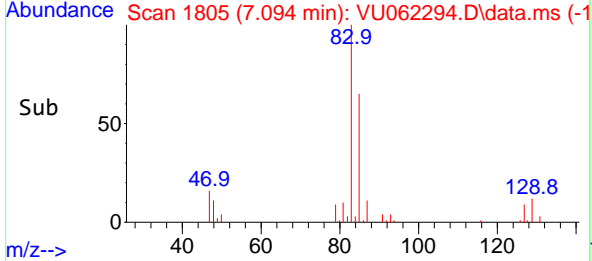
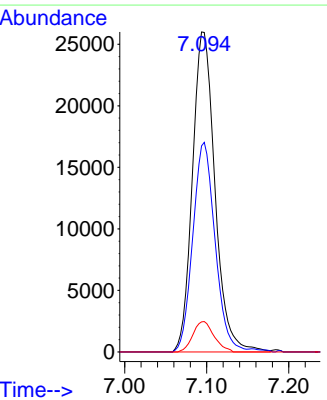
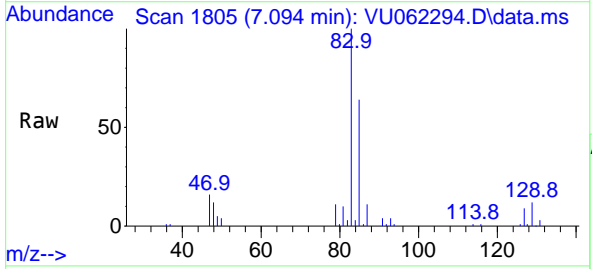
Instrument : MSVOA_U
 ClientSampleId : F7J35MS

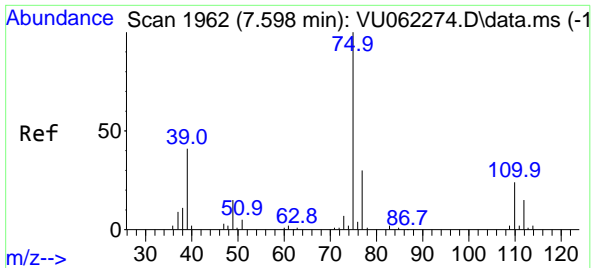
Tgt Ion: 63 Resp: 34539
 Ion Ratio Lower Upper
 63 100
 112 4.5 3.4 5.0



#38
 Bromodichloromethane
 Concen: 6.111 ug/L
 RT: 7.094 min Scan# 1805
 Delta R.T. -0.003 min
 Lab File: VU062294.D
 Acq: 12 Dec 2024 17:44

Tgt Ion: 83 Resp: 49630
 Ion Ratio Lower Upper
 83 100
 85 64.4 44.1 81.9
 127 10.3 6.9 10.3#

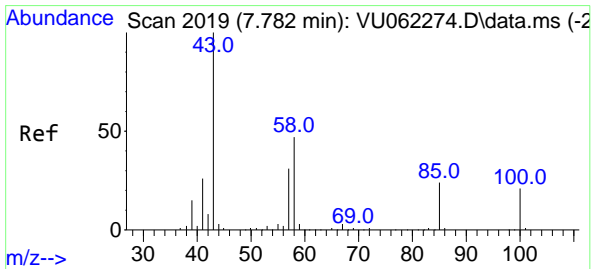
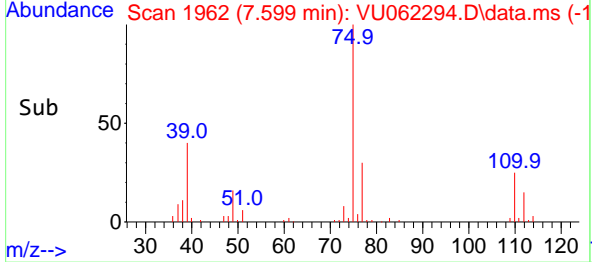
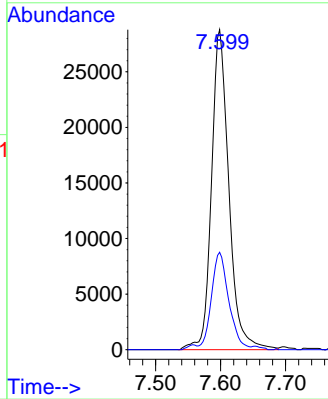
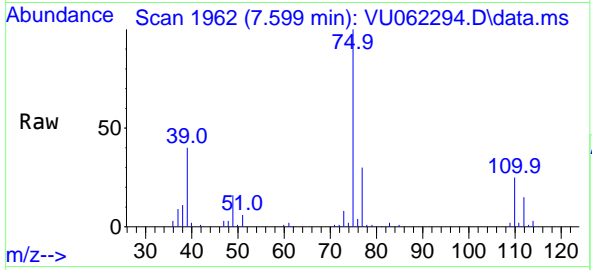




#39
 cis-1,3-Dichloropropene
 Concen: 5.795 ug/L
 RT: 7.599 min Scan# 1962
 Delta R.T. 0.000 min
 Lab File: VU062294.D
 Acq: 12 Dec 2024 17:44

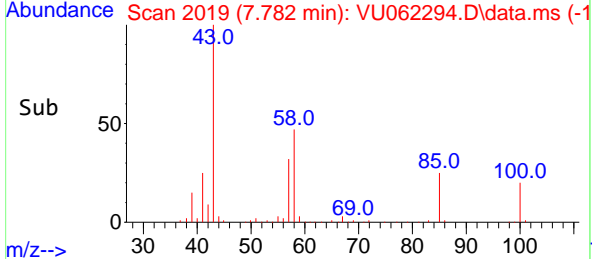
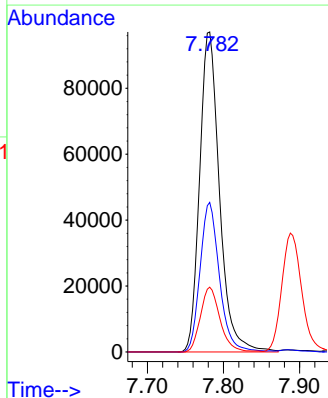
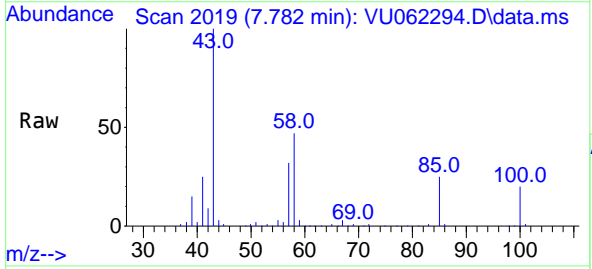
Instrument : MSVOA_U
 ClientSampleId : F7J35MS

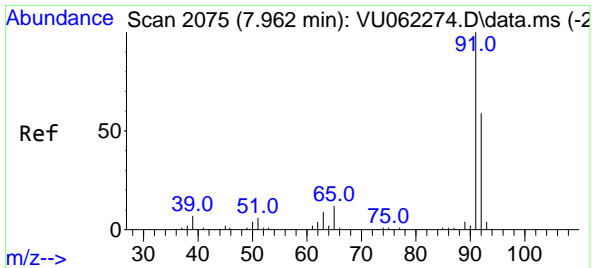
Tgt Ion: 75 Resp: 53471
 Ion Ratio Lower Upper
 75 100
 77 30.5 22.3 41.3



#40
 4-Methyl-2-pentanone
 Concen: 65.261 ug/L
 RT: 7.782 min Scan# 2019
 Delta R.T. 0.000 min
 Lab File: VU062294.D
 Acq: 12 Dec 2024 17:44

Tgt Ion: 43 Resp: 176073
 Ion Ratio Lower Upper
 43 100
 58 45.6 33.3 49.9
 100 20.0 12.4 18.6#

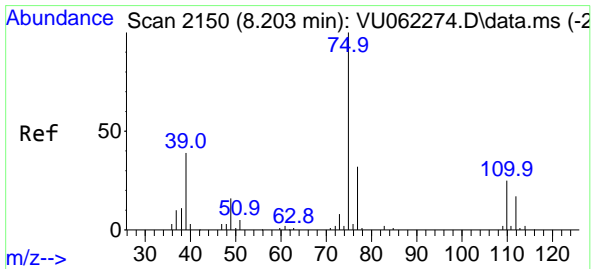
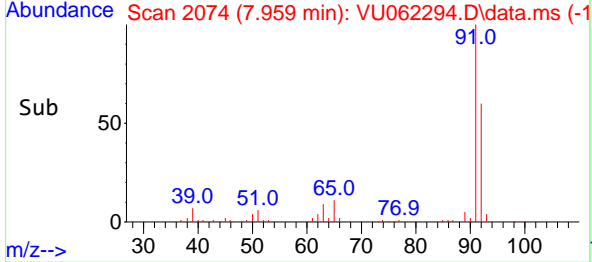
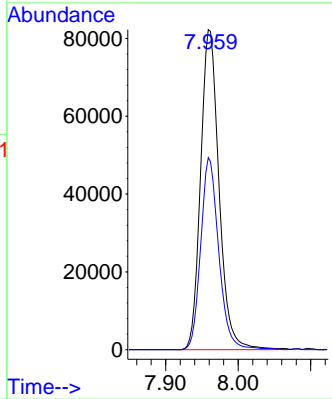
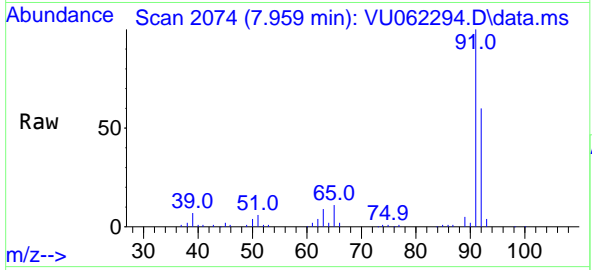




#42
 Toluene
 Concen: 5.699 ug/L
 RT: 7.959 min Scan# 2074
 Delta R.T. -0.003 min
 Lab File: VU062294.D
 Acq: 12 Dec 2024 17:44

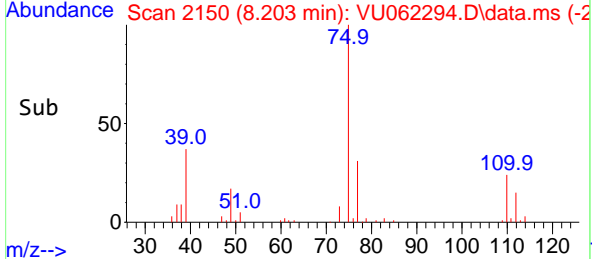
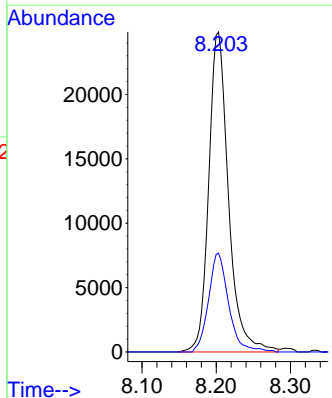
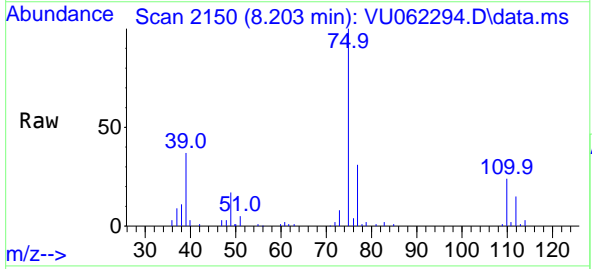
Instrument : MSVOA_U
 ClientSampleId : F7J35MS

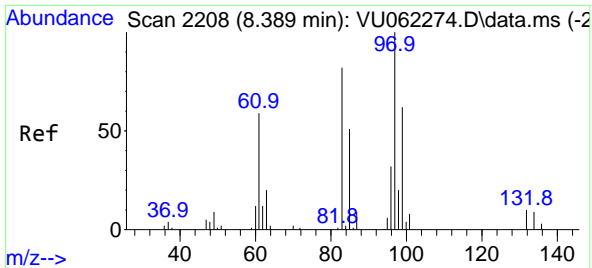
Tgt Ion: 91 Resp: 145265
 Ion Ratio Lower Upper
 91 100
 92 60.0 39.0 72.4



#44
 trans-1,3-Dichloropropene
 Concen: 6.085 ug/L
 RT: 8.203 min Scan# 2150
 Delta R.T. 0.000 min
 Lab File: VU062294.D
 Acq: 12 Dec 2024 17:44

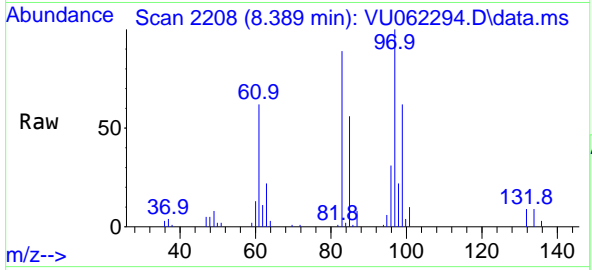
Tgt Ion: 75 Resp: 45850
 Ion Ratio Lower Upper
 75 100
 77 30.9 21.8 40.4





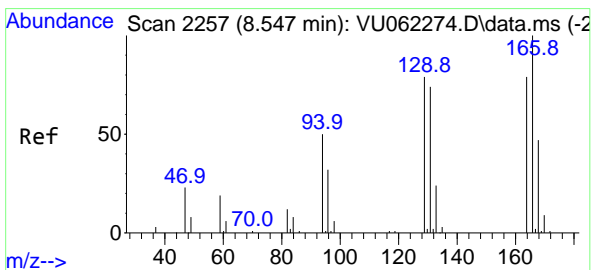
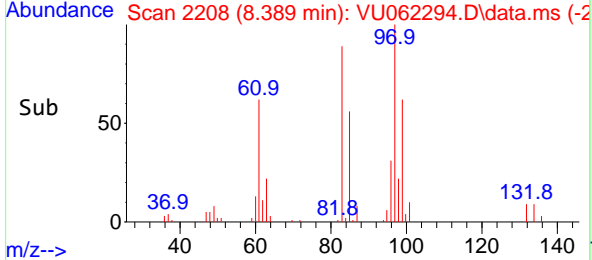
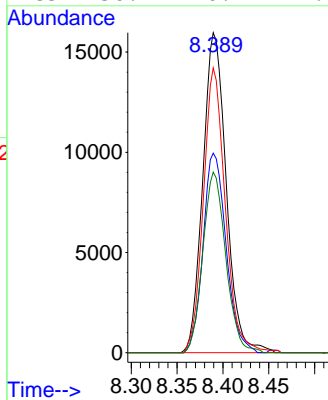
#45
 1,1,2-Trichloroethane
 Concen: 6.526 ug/L
 RT: 8.389 min Scan# 21
 Delta R.T. 0.000 min
 Lab File: VU062294.D
 Acq: 12 Dec 2024 17:44

Instrument :
 MSVOA_U
 ClientSampleId :
 F7J35MS



Tgt Ion: 97 Resp: 28362

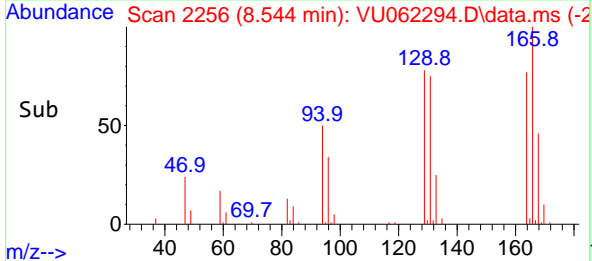
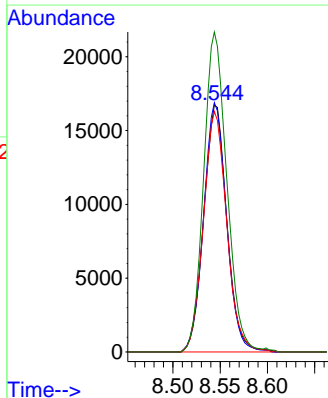
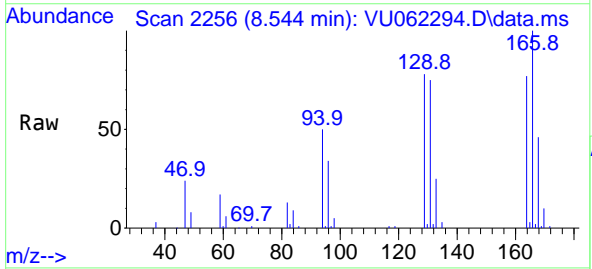
Ion	Ratio	Lower	Upper
97	100		
99	62.3	43.0	79.8
83	89.0	61.7	114.5
85	56.4	40.1	74.5

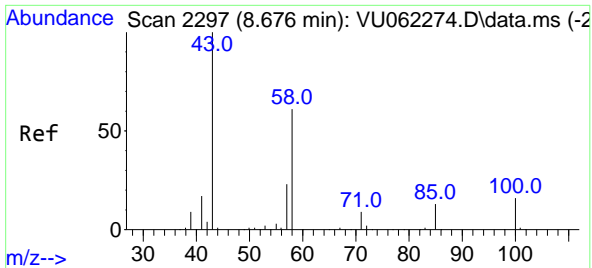


#47
 Tetrachloroethene
 Concen: 5.505 ug/L
 RT: 8.544 min Scan# 2256
 Delta R.T. -0.003 min
 Lab File: VU062294.D
 Acq: 12 Dec 2024 17:44

Tgt Ion: 164 Resp: 28461

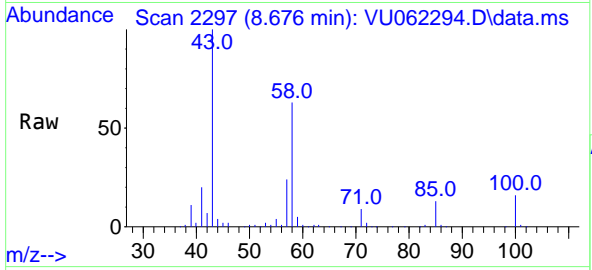
Ion	Ratio	Lower	Upper
164	100		
129	101.0	73.2	136.0
131	97.3	72.3	134.3
166	129.6	90.2	167.4





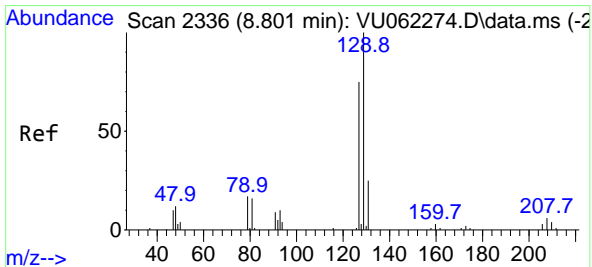
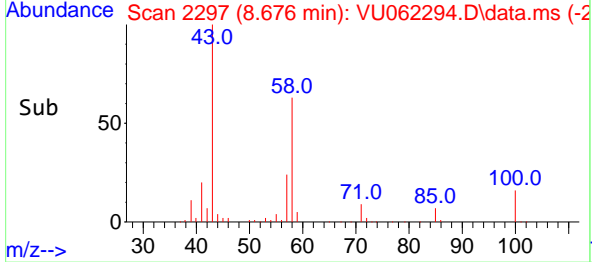
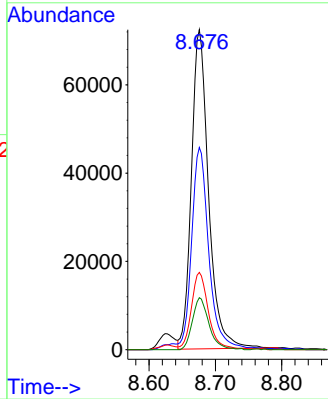
#48
 2-Hexanone
 Concen: 65.096 ug/L
 RT: 8.676 min Scan# 21
 Delta R.T. 0.000 min
 Lab File: VU062294.D
 Acq: 12 Dec 2024 17:44

Instrument :
 MSVOA_U
 ClientSampleId :
 F7J35MS



Tgt Ion: 43 Resp: 129795

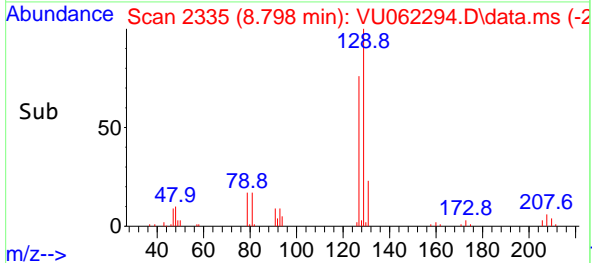
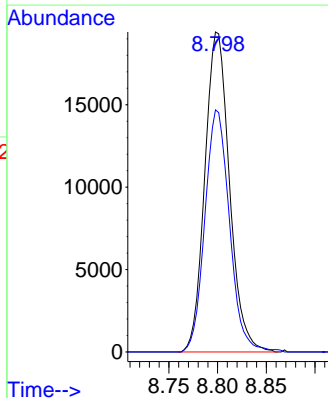
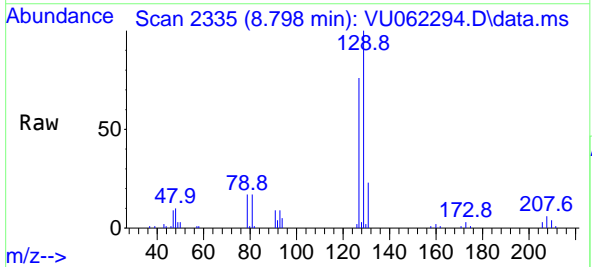
Ion	Ratio	Lower	Upper
43	100		
58	65.0	47.5	71.3
57	23.6	15.6	23.4#
100	15.8	9.2	13.8#

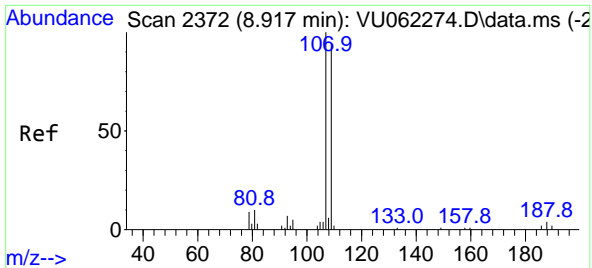


#49
 Dibromochloromethane
 Concen: 6.503 ug/L
 RT: 8.798 min Scan# 2335
 Delta R.T. -0.003 min
 Lab File: VU062294.D
 Acq: 12 Dec 2024 17:44

Tgt Ion: 129 Resp: 34146

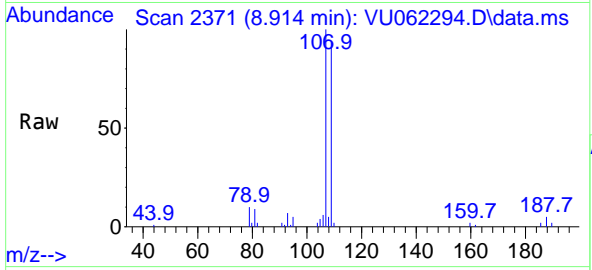
Ion	Ratio	Lower	Upper
129	100		
127	75.6	51.1	94.9



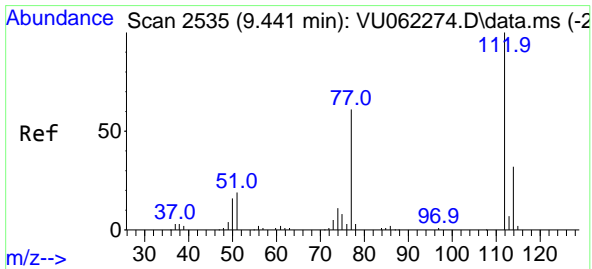
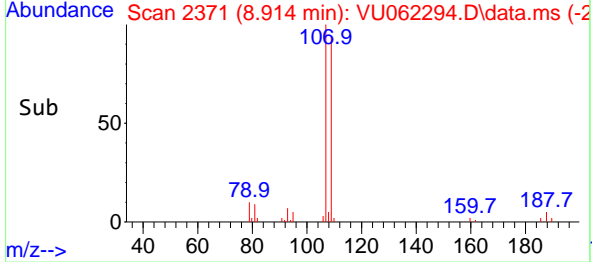
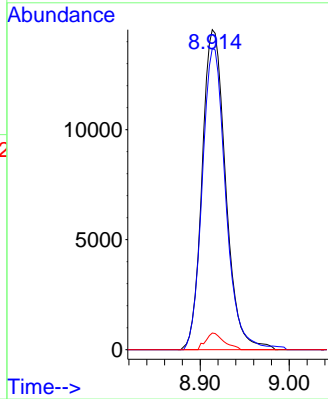


#50
 1,2-Dibromoethane
 Concen: 6.389 ug/L
 RT: 8.914 min Scan# 21
 Delta R.T. -0.003 min
 Lab File: VU062294.D
 Acq: 12 Dec 2024 17:44

Instrument : MSVOA_U
 ClientSampleId : F7J35MS

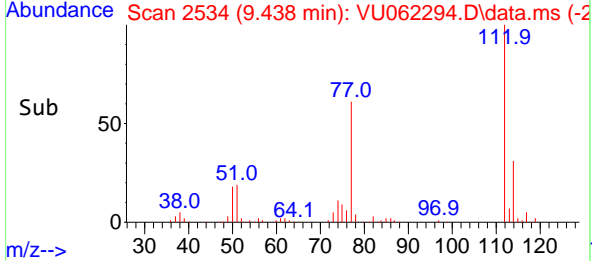
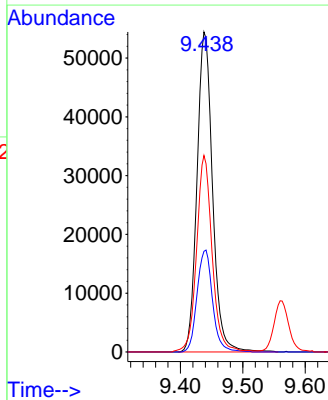
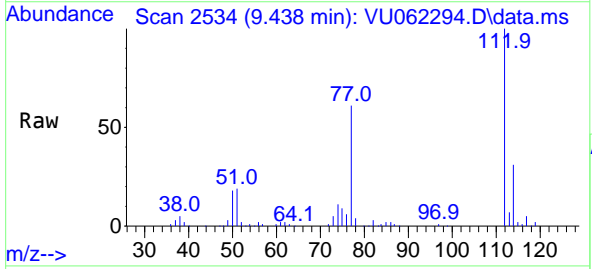


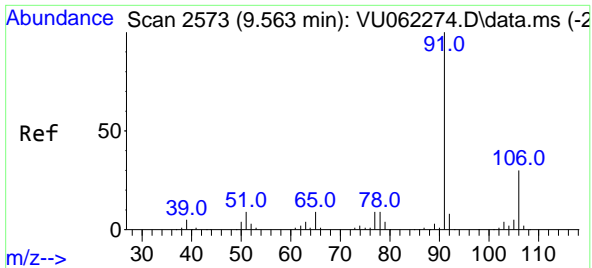
Tgt Ion:107 Resp: 26681
 Ion Ratio Lower Upper
 107 100
 109 94.1 66.8 124.2
 188 5.2 2.3 3.5#



#51
 Chlorobenzene
 Concen: 5.768 ug/L
 RT: 9.438 min Scan# 2534
 Delta R.T. -0.003 min
 Lab File: VU062294.D
 Acq: 12 Dec 2024 17:44

Tgt Ion:112 Resp: 94211
 Ion Ratio Lower Upper
 112 100
 114 31.5 23.0 42.6
 77 61.4 50.5 75.7

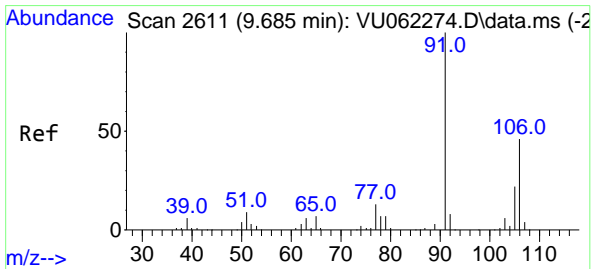
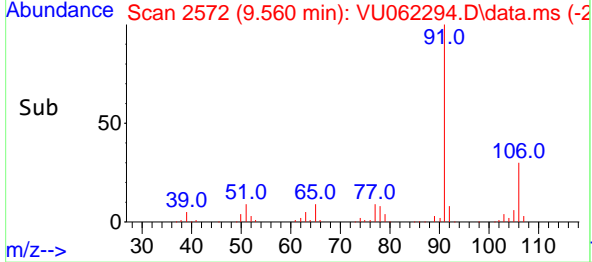
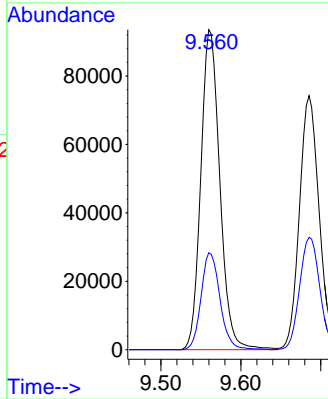
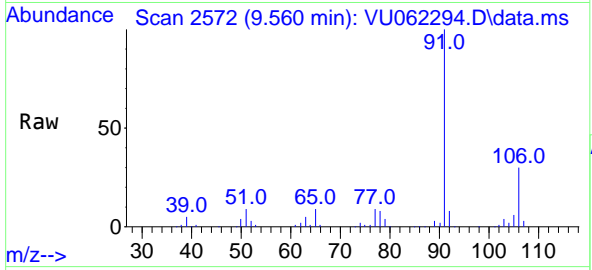




#52
 Ethylbenzene
 Concen: 5.423 ug/L
 RT: 9.560 min Scan# 2111
 Delta R.T. -0.003 min
 Lab File: VU062294.D
 Acq: 12 Dec 2024 17:44

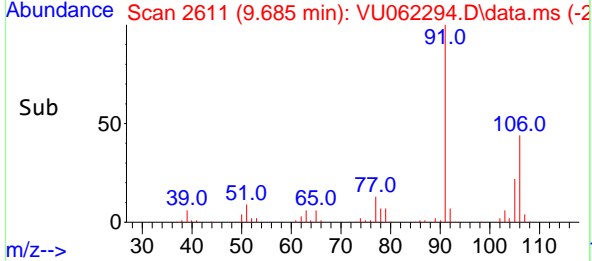
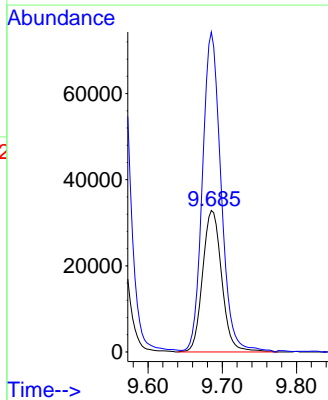
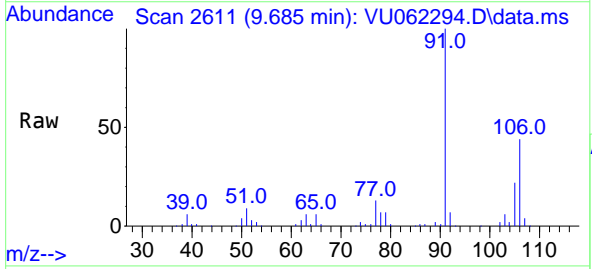
Instrument : MSVOA_U
 ClientSampleId : F7J35MS

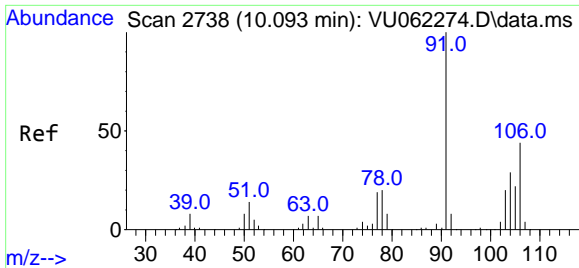
Tgt Ion: 91 Resp: 154986
 Ion Ratio Lower Upper
 91 100
 106 30.3 21.6 40.0



#53
 m,p-Xylene
 Concen: 5.572 ug/L
 RT: 9.685 min Scan# 2611
 Delta R.T. 0.000 min
 Lab File: VU062294.D
 Acq: 12 Dec 2024 17:44

Tgt Ion: 106 Resp: 58794
 Ion Ratio Lower Upper
 106 100
 91 226.2 147.6 274.0

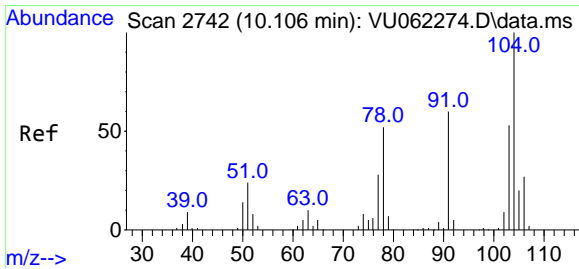
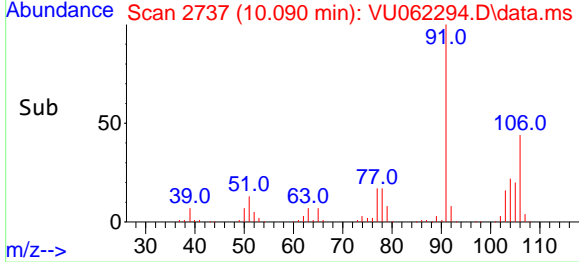
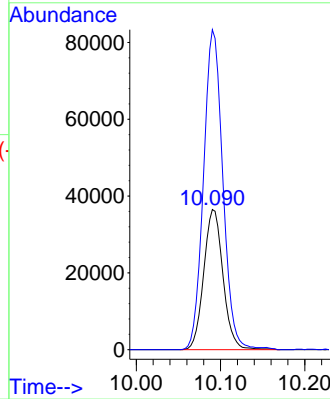
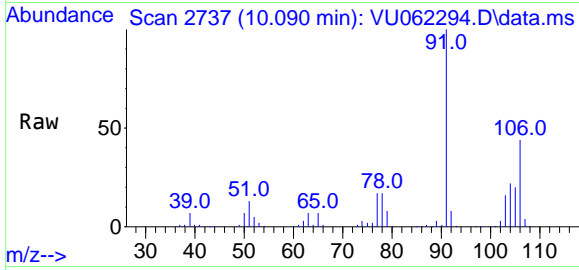




#54
 o-Xylene
 Concen: 5.675 ug/L
 RT: 10.090 min Scan# 2738
 Delta R.T. -0.003 min
 Lab File: VU062294.D
 Acq: 12 Dec 2024 17:44

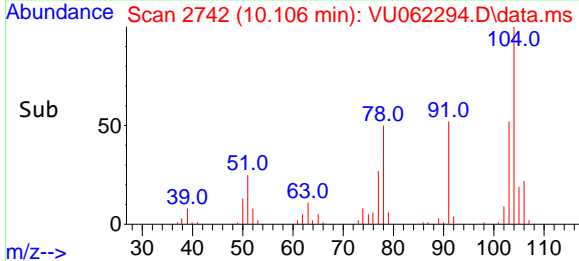
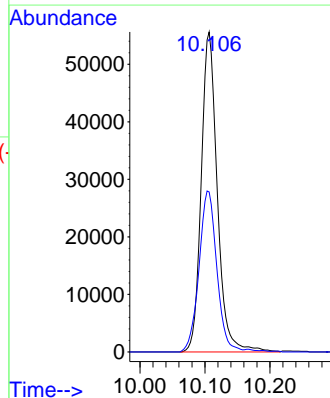
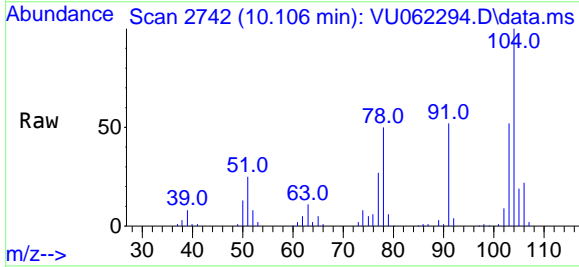
Instrument : MSVOA_U
 ClientSampleId : F7J35MS

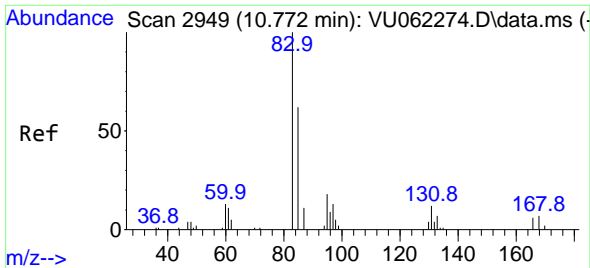
Tgt Ion:106 Resp: 58234
 Ion Ratio Lower Upper
 106 100
 91 228.2 159.8 296.8



#55
 Styrene
 Concen: 5.678 ug/L
 RT: 10.106 min Scan# 2742
 Delta R.T. 0.000 min
 Lab File: VU062294.D
 Acq: 12 Dec 2024 17:44

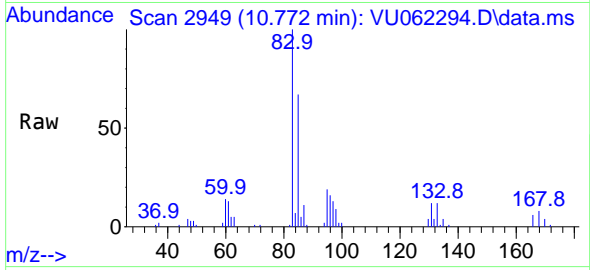
Tgt Ion:104 Resp: 96044
 Ion Ratio Lower Upper
 104 100
 78 50.0 33.2 61.7



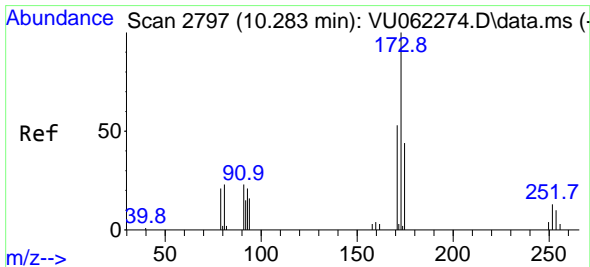
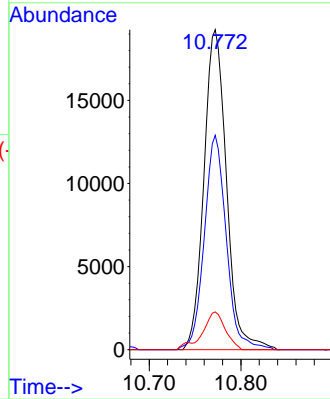
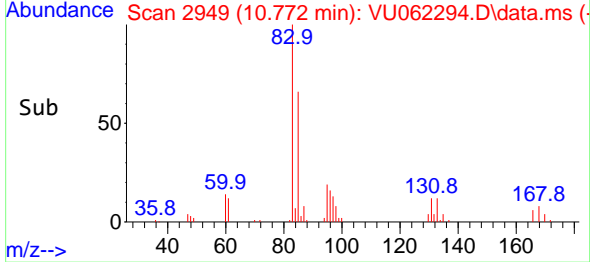


#57
 1,1,2,2-Tetrachloroethane
 Concen: 6.507 ug/L
 RT: 10.772 min Scan# 2949
 Delta R.T. 0.000 min
 Lab File: VU062294.D
 Acq: 12 Dec 2024 17:44

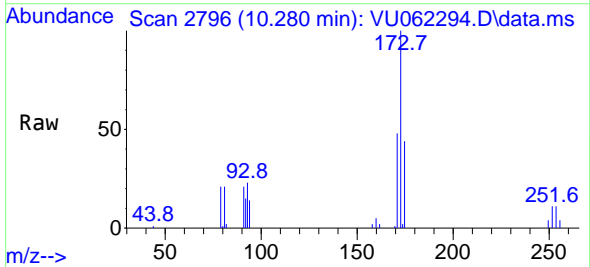
Instrument : MSVOA_U
 ClientSampleId : F7J35MS



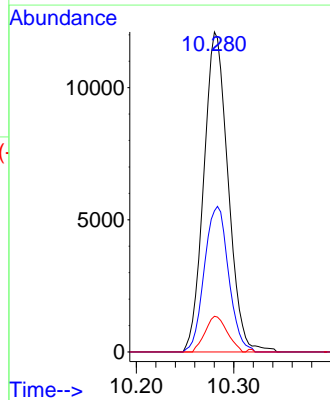
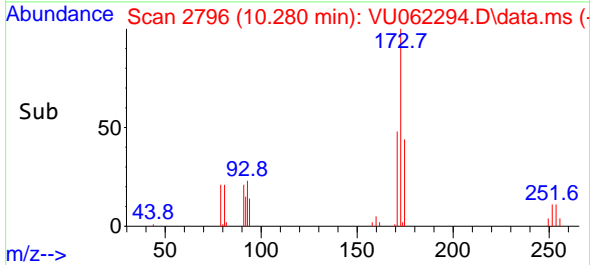
Tgt Ion: 83 Resp: 32912
 Ion Ratio Lower Upper
 83 100
 85 67.0 44.4 82.4
 131 11.8 7.3 10.9#

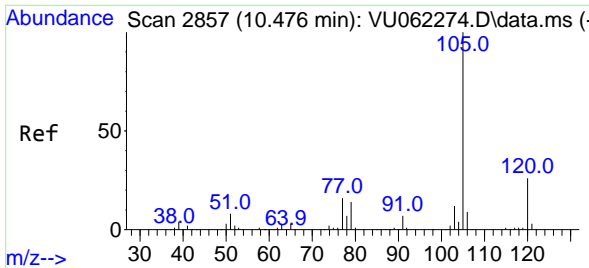


#59
 Bromoform
 Concen: 6.680 ug/L
 RT: 10.280 min Scan# 2796
 Delta R.T. -0.003 min
 Lab File: VU062294.D
 Acq: 12 Dec 2024 17:44



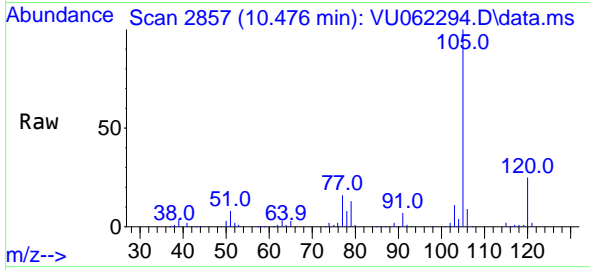
Tgt Ion: 173 Resp: 20979
 Ion Ratio Lower Upper
 173 100
 175 45.4 39.0 58.4
 254 10.1 7.4 11.0





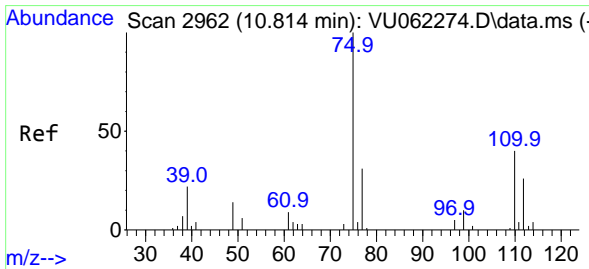
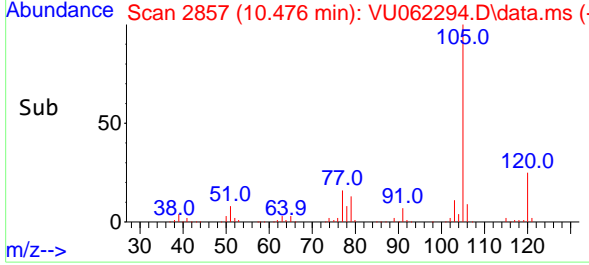
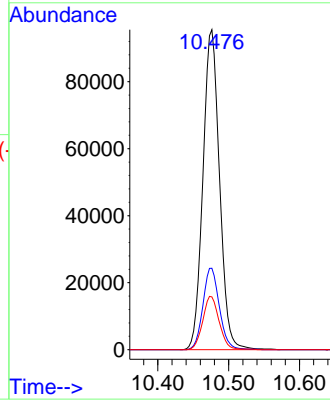
#60
 Isopropylbenzene
 Concen: 5.380 ug/L
 RT: 10.476 min Scan# 2857
 Delta R.T. 0.000 min
 Lab File: VU062294.D
 Acq: 12 Dec 2024 17:44

Instrument :
 MSVOA_U
 ClientSampleId :
 F7J35MS

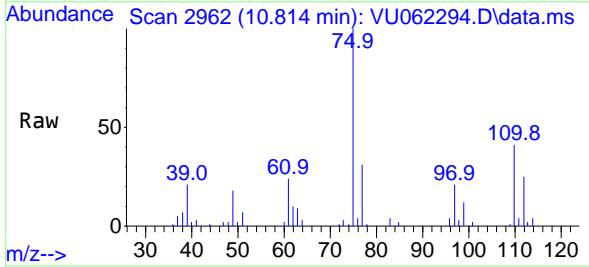


Tgt Ion:105 Resp: 155318

Ion	Ratio	Lower	Upper
105	100		
120	25.3	20.6	31.0
77	16.5	13.0	19.6

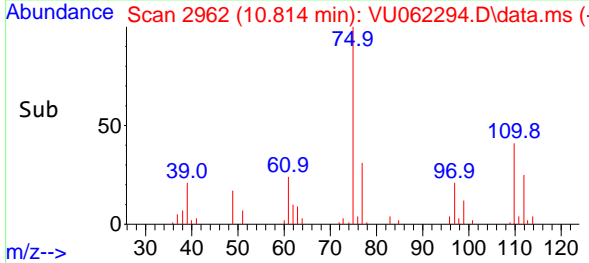
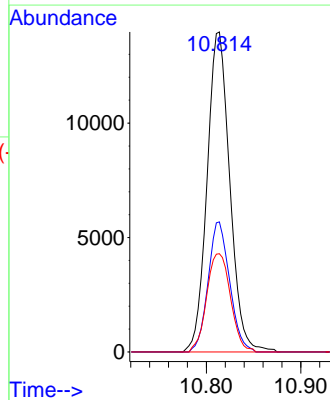


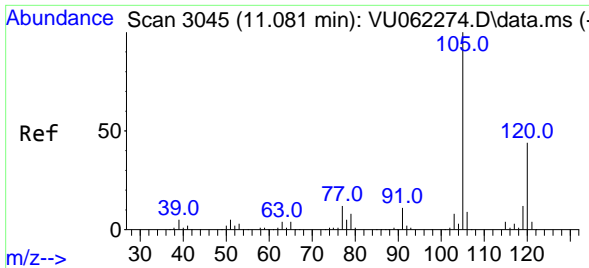
#61
 1,2,3-Trichloropropane
 Concen: 6.320 ug/L
 RT: 10.814 min Scan# 2962
 Delta R.T. 0.000 min
 Lab File: VU062294.D
 Acq: 12 Dec 2024 17:44



Tgt Ion: 75 Resp: 23354

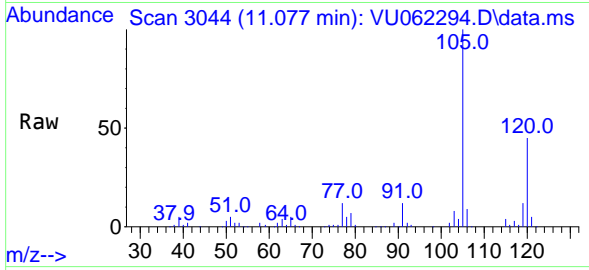
Ion	Ratio	Lower	Upper
75	100		
110	38.6	28.9	43.3
77	32.2	26.5	39.7



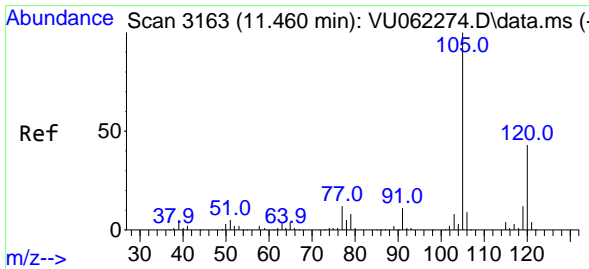
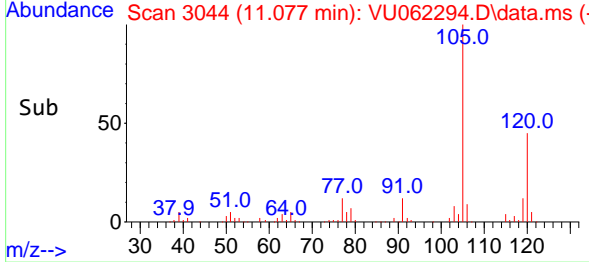
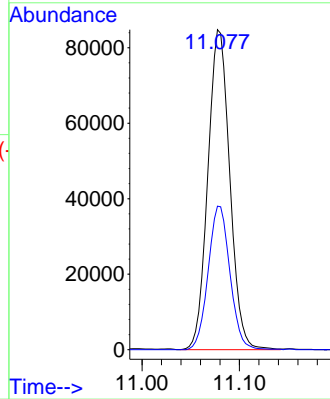


#62
 1,3,5-Trimethylbenzene
 Concen: 5.423 ug/L
 RT: 11.077 min Scan# 3045
 Delta R.T. -0.003 min
 Lab File: VU062294.D
 Acq: 12 Dec 2024 17:44

Instrument : MSVOA_U
 ClientSampleId : F7J35MS

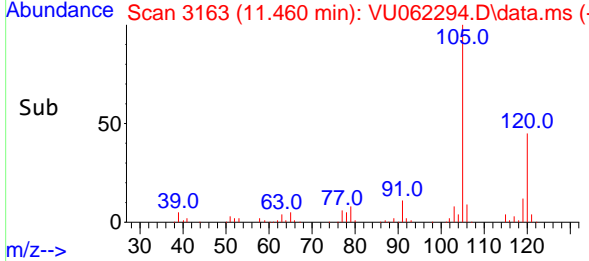
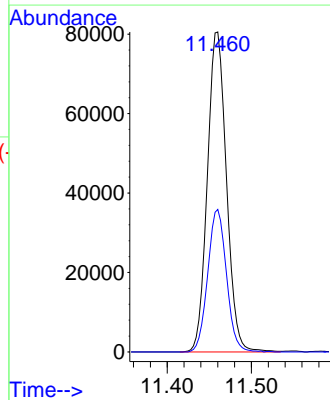
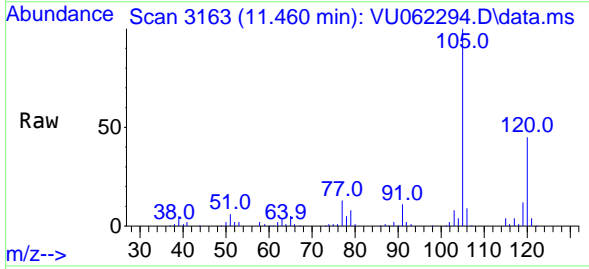


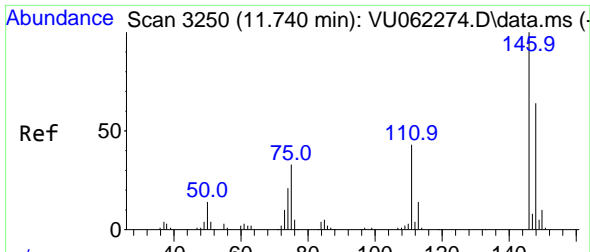
Tgt Ion:105 Resp: 132495
 Ion Ratio Lower Upper
 105 100
 120 44.6 36.7 55.1



#63
 1,2,4-Trimethylbenzene
 Concen: 5.313 ug/L
 RT: 11.460 min Scan# 3163
 Delta R.T. 0.000 min
 Lab File: VU062294.D
 Acq: 12 Dec 2024 17:44

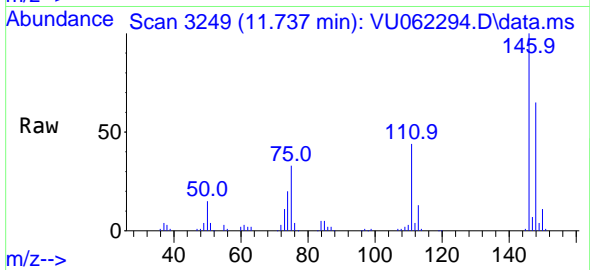
Tgt Ion:105 Resp: 127180
 Ion Ratio Lower Upper
 105 100
 120 43.7 34.7 52.1



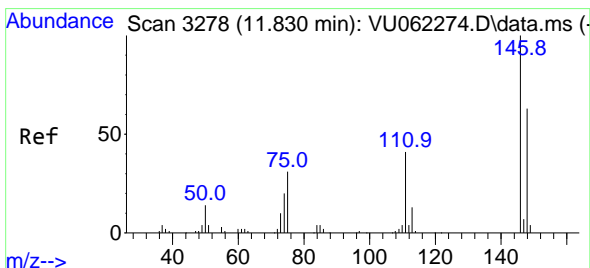
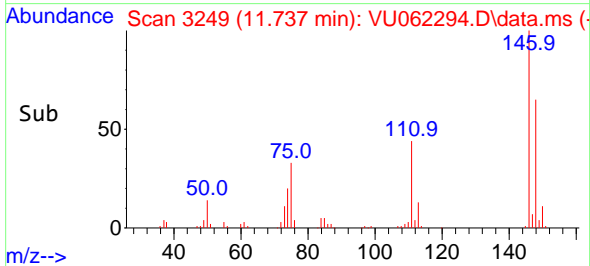
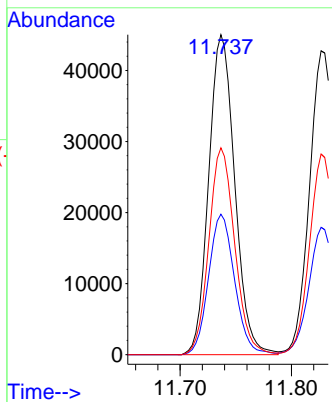


#64
 1,3-Dichlorobenzene
 Concen: 5.519 ug/L
 RT: 11.737 min Scan# 31
 Delta R.T. -0.003 min
 Lab File: VU062294.D
 Acq: 12 Dec 2024 17:44

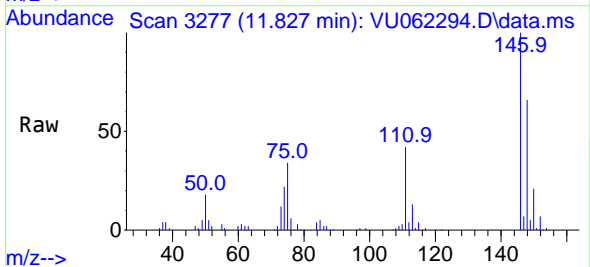
Instrument :
 MSVOA_U
 ClientSampleId :
 F7J35MS



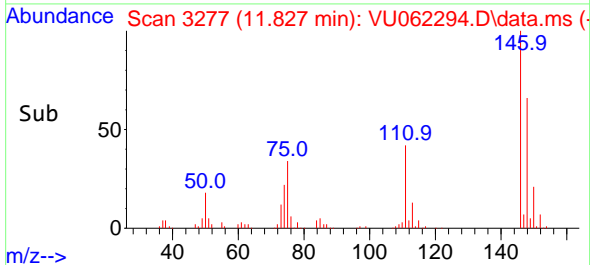
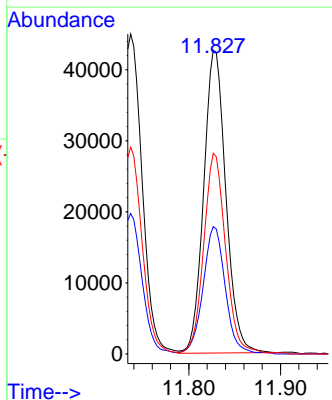
Tgt Ion:146 Resp: 73181
 Ion Ratio Lower Upper
 146 100
 111 43.9 30.7 57.1
 148 64.6 45.1 83.7

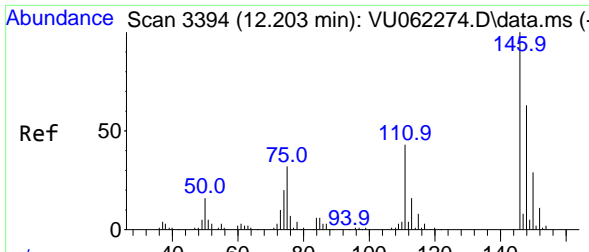


#65
 1,4-Dichlorobenzene
 Concen: 5.365 ug/L
 RT: 11.827 min Scan# 3277
 Delta R.T. -0.003 min
 Lab File: VU062294.D
 Acq: 12 Dec 2024 17:44



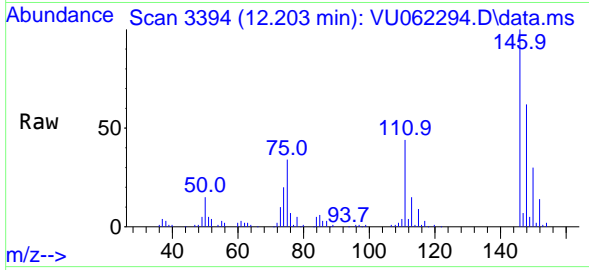
Tgt Ion:146 Resp: 71638
 Ion Ratio Lower Upper
 146 100
 111 41.9 29.3 54.3
 148 66.0 44.6 82.8



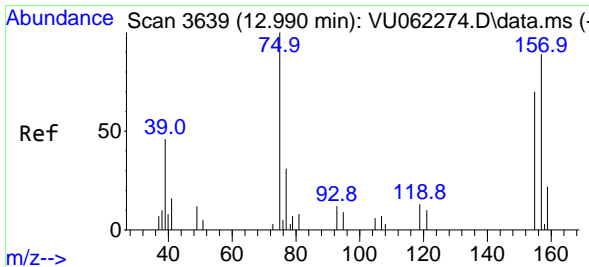
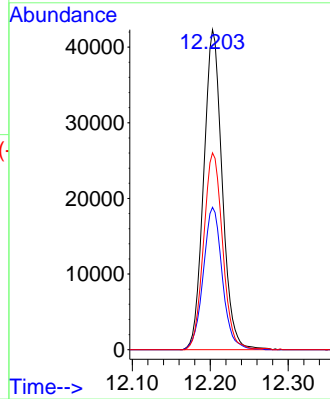
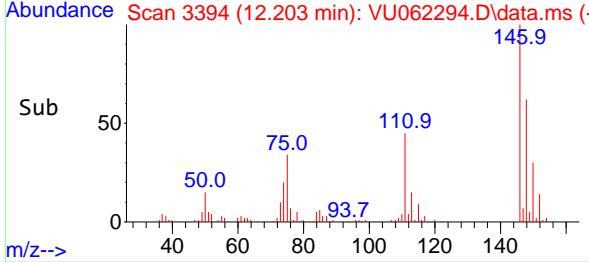


#67
 1,2-Dichlorobenzene
 Concen: 5.687 ug/L
 RT: 12.203 min Scan# 3111
 Delta R.T. 0.000 min
 Lab File: VU062294.D
 Acq: 12 Dec 2024 17:44

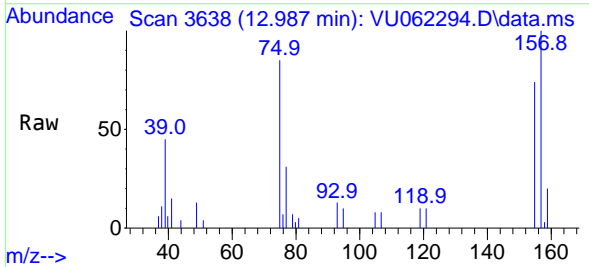
Instrument : MSVOA_U
 ClientSampleId : F7J35MS



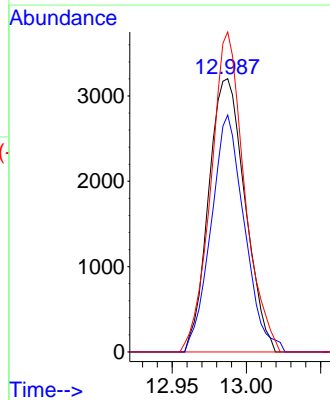
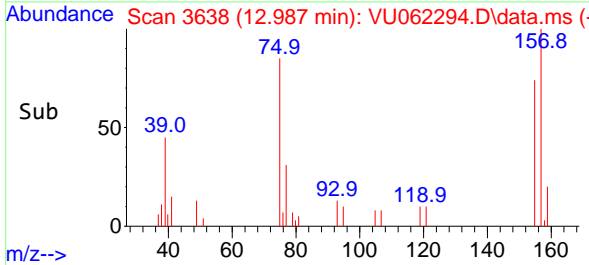
Tgt Ion:146 Resp: 69693
 Ion Ratio Lower Upper
 146 100
 111 44.5 36.0 54.0
 148 61.5 52.3 78.5

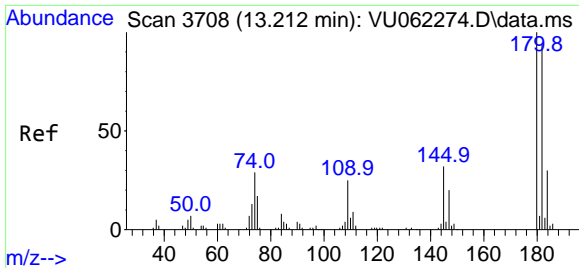


#68
 1,2-Dibromo-3-chloropropane
 Concen: 6.768 ug/L
 RT: 12.987 min Scan# 3638
 Delta R.T. -0.003 min
 Lab File: VU062294.D
 Acq: 12 Dec 2024 17:44



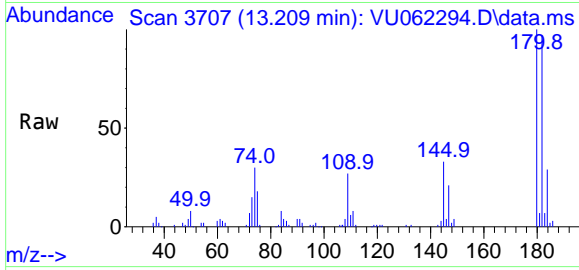
Tgt Ion: 75 Resp: 5455
 Ion Ratio Lower Upper
 75 100
 155 86.7 55.2 82.8#
 157 117.1 73.5 110.3#



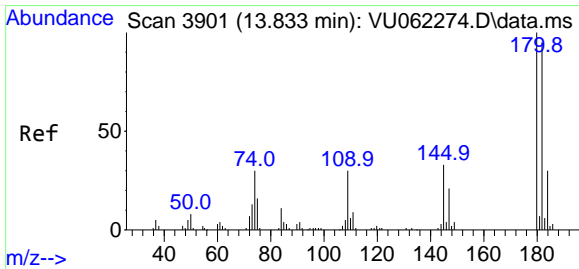
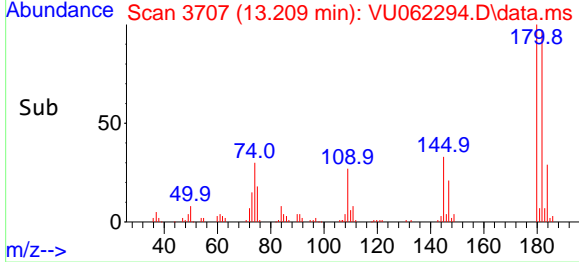
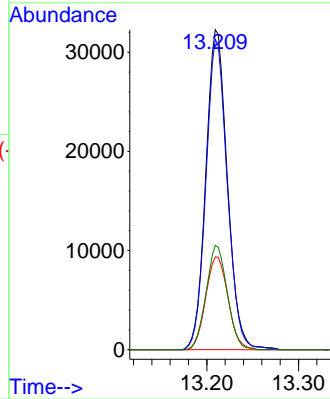


#69
 1,3,5-Trichlorobenzene
 Concen: 5.352 ug/L
 RT: 13.209 min Scan# 31
 Delta R.T. -0.003 min
 Lab File: VU062294.D
 Acq: 12 Dec 2024 17:44

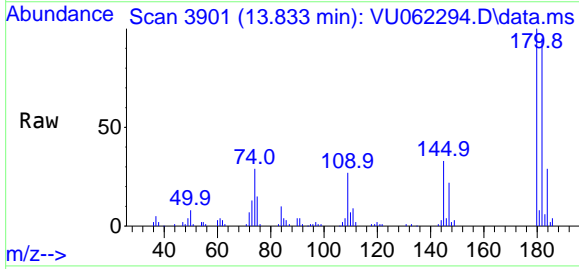
Instrument : MSVOA_U
 ClientSampleId : F7J35MS



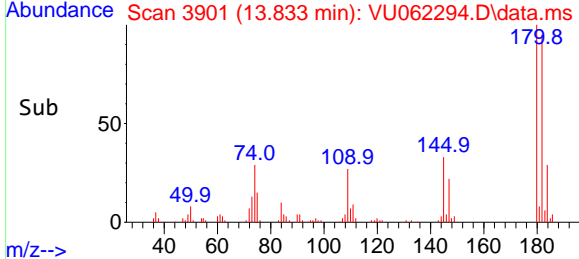
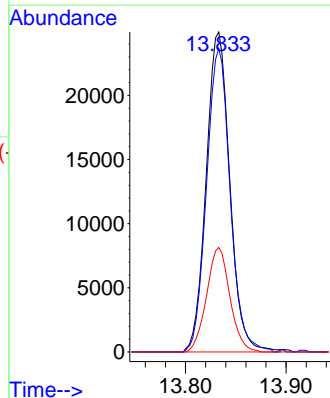
Tgt Ion:180 Resp: 52756
 Ion Ratio Lower Upper
 180 100
 182 96.0 76.7 115.1
 184 29.9 24.8 37.2
 145 31.9 25.4 38.0

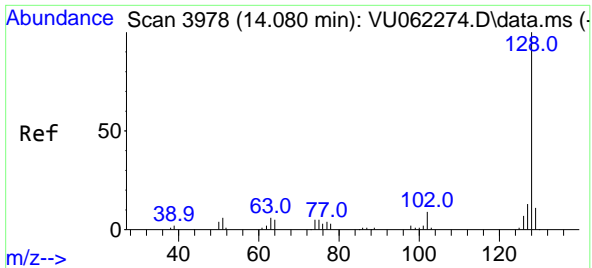


#70
 1,2,4-trichlorobenzene
 Concen: 5.237 ug/L
 RT: 13.833 min Scan# 3901
 Delta R.T. 0.000 min
 Lab File: VU062294.D
 Acq: 12 Dec 2024 17:44



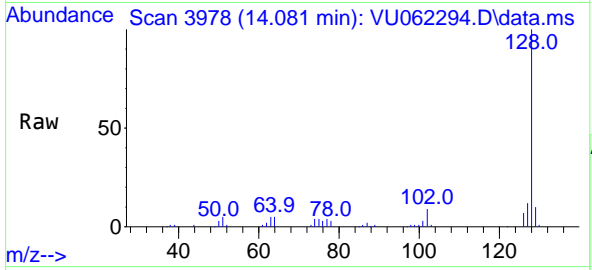
Tgt Ion:180 Resp: 40761
 Ion Ratio Lower Upper
 180 100
 182 94.5 74.5 111.7
 145 32.2 25.6 38.4



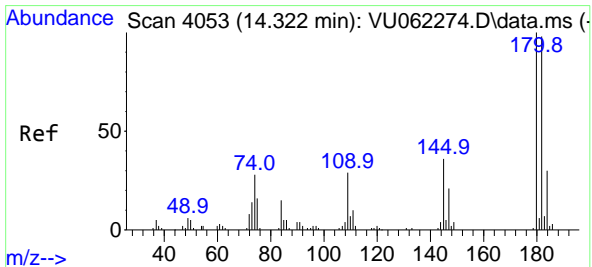
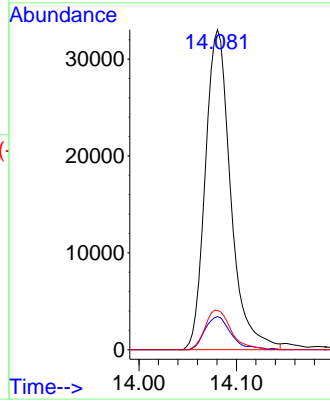
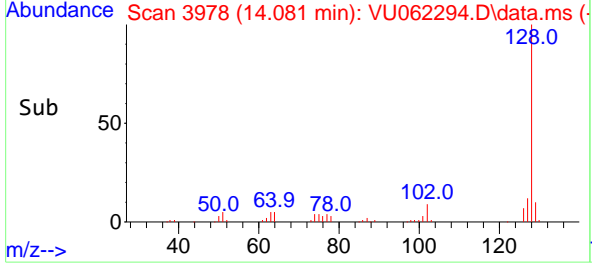


#71
 Naphthalene
 Concen: 5.110 ug/L
 RT: 14.081 min Scan# 3978
 Delta R.T. 0.000 min
 Lab File: VU062294.D
 Acq: 12 Dec 2024 17:44

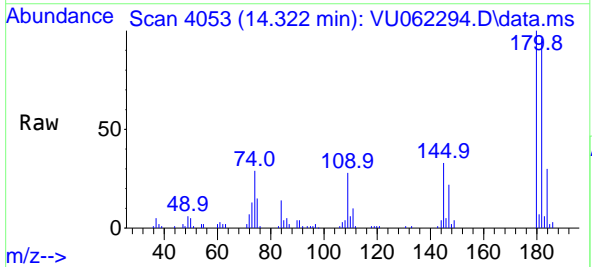
Instrument : MSVOA_U
 ClientSampleId : F7J35MS



Tgt Ion:128 Resp: 59713
 Ion Ratio Lower Upper
 128 100
 129 10.6 8.5 12.7
 127 12.6 10.2 15.4



#72
 1,2,3-Trichlorobenzene
 Concen: 5.168 ug/L
 RT: 14.322 min Scan# 4053
 Delta R.T. 0.000 min
 Lab File: VU062294.D
 Acq: 12 Dec 2024 17:44



Tgt Ion:180 Resp: 35467
 Ion Ratio Lower Upper
 180 100
 182 97.7 76.1 114.1
 145 33.3 27.4 41.0

