

Data Path : Z:\voasrv\HPCHEM1\MSVOA_U\Data\VU121624\
 Data File : VU062361.D
 Acq On : 17 Dec 2024 01:57
 Operator : MD/SY
 Sample : P5274-03DL 5X
 Misc : 25mL/MSVOA_U/WATER
 ALS Vial : 36 Sample Multiplier: 1

Instrument :
 MSVOA_U
 ClientSampleId :
 BH8B2DL

Integration Parameters: rteint.p
 Integrator: RTE
 Smoothing : ON
 Sampling : 1
 Start Thrs : 0.1
 Stop Thrs : 0
 Filtering: 5
 Min Area: 3 % of largest Peak
 Max Peaks: 100
 Peak Location: TOP

If leading or trailing edge < 100 prefer < Baseline drop else tangent >
 Peak separation: 5

Method : Z:\voasrv\HPCHEM1\MSVOA_U\Method\SFAMUTR120924WMA.M
 Title : TRACE VOA SFAM1.0

Signal : TIC: VU062361.D\data.ms

peak #	R.T. min	first scan	max scan	last scan	PK TY	peak height	corr. area	corr. % max.	% of total
1	1.596	78	95	105	rBV	43731	60869	14.82%	1.685%
2	1.907	184	192	210	rVB	31185	42254	10.29%	1.170%
3	2.126	251	260	276	rVB	25652	37833	9.21%	1.047%
4	2.557	382	394	417	rVB	79839	130894	31.88%	3.623%
5	3.174	572	586	604	rVB	10902	24356	5.93%	0.674%
6	4.634	1024	1040	1071	rBV2	44730	146651	35.71%	4.059%
7	5.052	1155	1170	1192	rBV	69211	162112	39.48%	4.487%
8	5.714	1356	1376	1400	rBV2	132526	342438	83.39%	9.478%
9	6.238	1528	1539	1560	rBV	112134	216634	52.75%	5.996%
10	6.531	1618	1630	1662	rBV	160107	312714	76.15%	8.656%
11	6.679	1665	1676	1699	rVV	77947	153299	37.33%	4.243%
12	7.560	1938	1950	1969	rBV	38945	70769	17.23%	1.959%
13	7.888	2040	2052	2071	rBV	165104	296131	72.11%	8.197%
14	8.174	2129	2141	2158	rBV	22364	40148	9.78%	1.111%
15	8.544	2243	2256	2273	rBV2	240510	410646	100.00%	11.366%
16	8.631	2273	2283	2316	rVV2	131093	287538	70.02%	7.959%
17	9.409	2514	2525	2546	rBV	158304	273038	66.49%	7.557%
18	10.746	2930	2941	2962	rBB	59265	97092	23.64%	2.687%
19	11.804	3259	3270	3285	rBV	154719	249992	60.88%	6.919%
20	12.184	3375	3388	3410	rBV	154253	257477	62.70%	7.127%

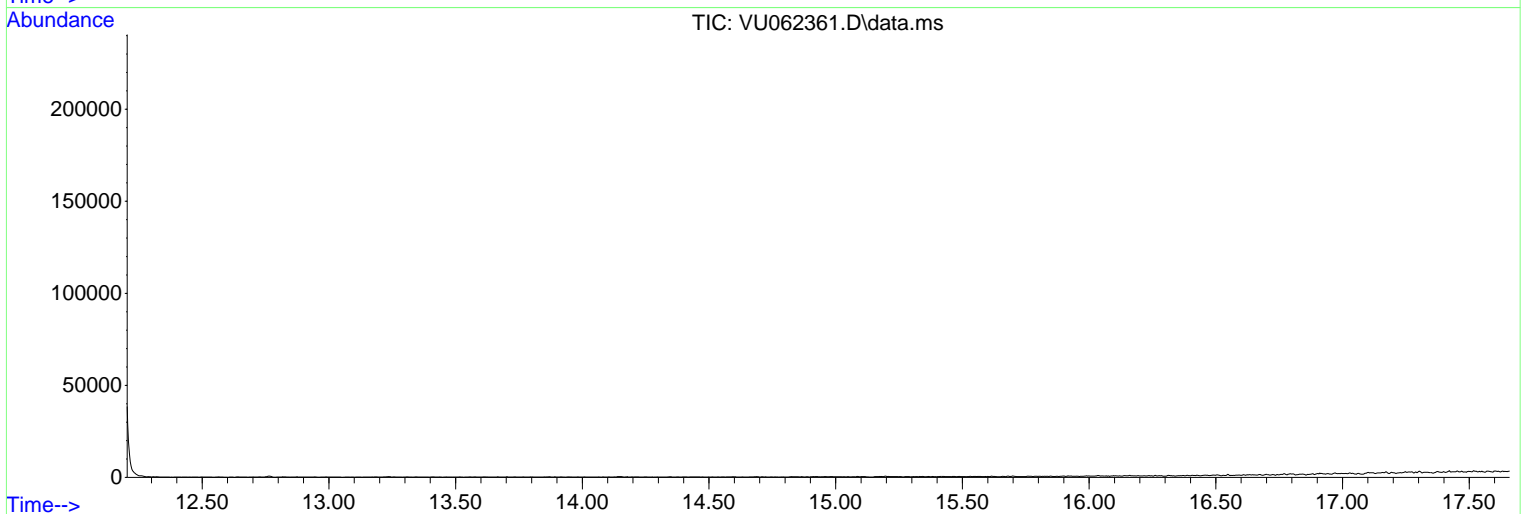
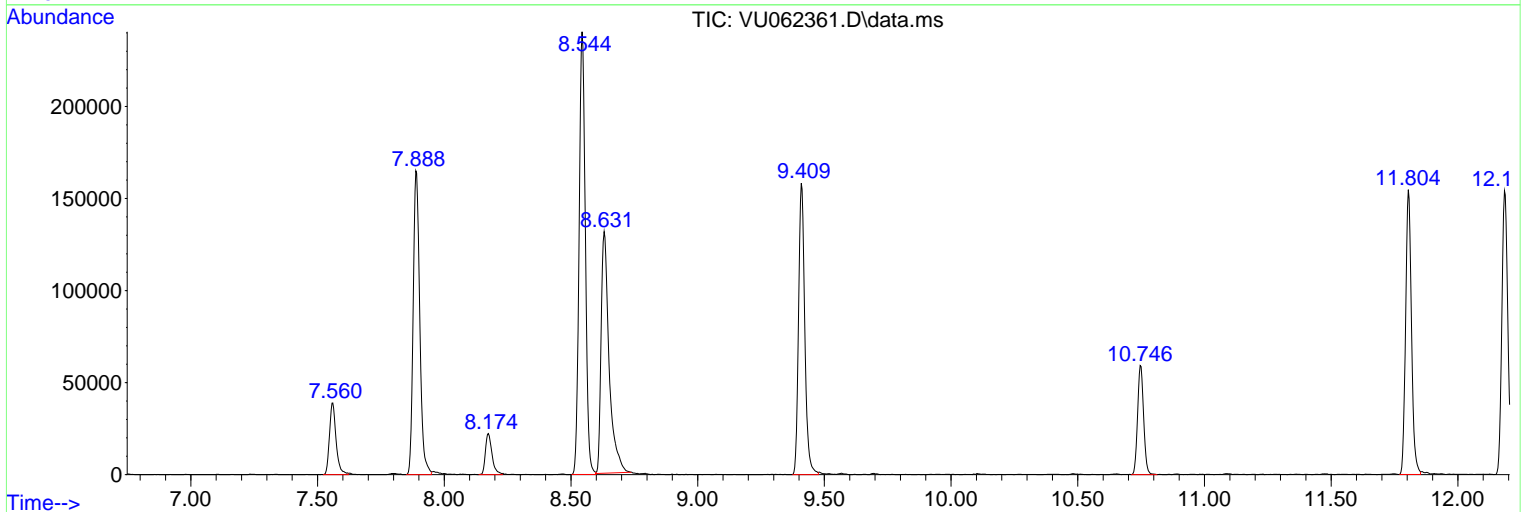
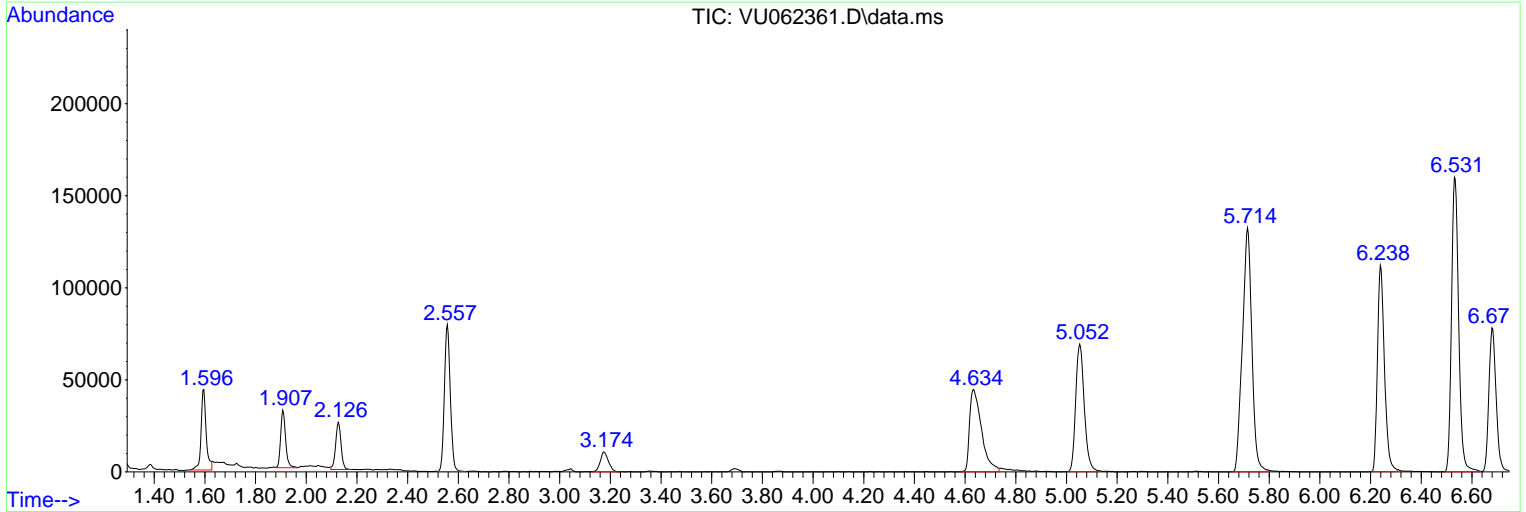
Sum of corrected areas: 3612885

Data Path : Z:\voasrv\HPCHEM1\MSVOA_U\Data\VU121624\
 Data File : VU062361.D
 Acq On : 17 Dec 2024 01:57
 Operator : MD/SY
 Sample : P5274-03DL 5X
 Misc : 25mL/MSVOA_U/WATER
 ALS Vial : 36 Sample Multiplier: 1

Instrument :
 MSVOA_U
 ClientSampleId :
 BH8B2DL

Quant Method : Z:\voasrv\HPCHEM1\MSVOA_U\Method\SFAMUTR120924WMA.M
 Quant Title : TRACE VOA SFAM1.0

TIC Library : C:\Database\NIST20.L
 TIC Integration Parameters: LSCINT.P



Library Search Compound Report

Data Path : Z:\voasrv\HPCHEM1\MSVOA_U\Data\VU121624\
Data File : VU062361.D
Acq On : 17 Dec 2024 01:57
Operator : MD/SY
Sample : P5274-03DL 5X
Misc : 25mL/MSVOA_U/WATER
ALS Vial : 36 Sample Multiplier: 1

Instrument :
MSVOA_U
ClientSampleId :
BH8B2DL

Quant Method : Z:\voasrv\HPCHEM1\MSVOA_U\Method\SFAMUTR120924WMA.M
Quant Title : TRACE VOA SFAM1.0

TIC Library : C:\Database\NIST20.L
TIC Integration Parameters: LSCINT.P

No Library Search Compounds Detected

Data Path : Z:\voasrv\HPCHEM1\MSVOA_U\Data\VU121624\
Data File : VU062361.D
Acq On : 17 Dec 2024 01:57
Operator : MD/SY
Sample : P5274-03DL 5X
Misc : 25mL/MSVOA_U/WATER
ALS Vial : 36 Sample Multiplier: 1

Instrument :
MSVOA_U
ClientSampleId :
BH8B2DL

Quant Method : Z:\voasrv\HPCHEM1\MSVOA_U\Method\SFAMUTR120924WMA.M
Quant Title : TRACE VOA SFAM1.0

TIC Library : C:\Database\NIST0.L
TIC Integration Parameters: LSCINT.P

TIC Top Hit name	RT	EstConc	Units	Response	--Internal Standard--		
					#	RT	Resp Conc
