

Data Path : Z:\VOASRV\HPCHEM1\MSVOA U\DATA\VU121719\
 Data File : VU036262.D
 Acq On : 17 Dec 2019 16:56
 Operator : JC/MD
 Sample : VSTDCCC005EC
 Misc : 25.0mL/MSVOA U/WATER
 ALS Vial : 17 Sample Multiplier: 1

Instrument :
 MSVOA_U
 ClientSampled :

Quant Time: Dec 18 01:27:32 2019
 Quant Method : Z:\VOASRV\HPCHEM1\MSVOA_U\METHOD\SOMUTR121319WMA.M
 Quant Title : TRACE VOA SOM01.0
 QLast Update : Wed Dec 18 01:23:38 2019
 Response via : Initial Calibration

Internal Standards	R.T.	QIon	Response	Conc	Units	Dev(Min)
1) 1,4-Difluorobenzene	6.29	114	244084	5.00	ug/L	0.00
28) Chlorobenzene-d5	9.45	117	257624	5.00	ug/L	0.00
60) 1,4-Dichlorobenzene-d4	11.84	152	124030	5.00	ug/L	0.00

System Monitoring Compounds

4) Vinyl Chloride-d3	1.62	65	89610	4.17	ug/L	0.00
Spiked Amount	5.000	Range	40 - 130	Recovery	=	83.40%
7) Chloroethane-d5	1.93	69	87239	4.53	ug/L	0.00
Spiked Amount	5.000	Range	65 - 130	Recovery	=	90.60%
11) 1,1-Dichloroethene-d2	2.60	63	141396	4.56	ug/L	0.00
Spiked Amount	5.000	Range	60 - 125	Recovery	=	91.20%
20) 2-Butanone-d5	4.68	46	183253	45.51	ug/L	0.00
Spiked Amount	50.000	Range	40 - 130	Recovery	=	91.02%
24) Chloroform-d	5.11	84	152719	4.42	ug/L	0.00
Spiked Amount	5.000	Range	70 - 125	Recovery	=	88.40%
26) 1,2-Dichloroethane-d4	5.75	65	89421	4.93	ug/L	0.00
Spiked Amount	5.000	Range	70 - 130	Recovery	=	98.60%
32) Benzene-d6	5.77	84	317186	4.90	ug/L	0.00
Spiked Amount	5.000	Range	70 - 125	Recovery	=	98.00%
36) 1,2-Dichloropropane-d6	6.73	67	97734	4.79	ug/L	0.00
Spiked Amount	5.000	Range	60 - 140	Recovery	=	95.80%
41) Toluene-d8	7.93	98	309224	5.08	ug/L	0.00
Spiked Amount	5.000	Range	70 - 130	Recovery	=	101.60%
43) trans-1,3-Dichloropropene-	8.21	79	42085	5.01	ug/L	0.00
Spiked Amount	5.000	Range	55 - 130	Recovery	=	100.20%
46) 2-Hexanone-d5	8.67	63	162885	50.74	ug/L	0.00
Spiked Amount	50.000	Range	45 - 130	Recovery	=	101.48%
57) 1,1,2,2-Tetrachloroethane-	10.78	84	93568	5.02	ug/L	0.00
Spiked Amount	5.000	Range	65 - 120	Recovery	=	100.40%
64) 1,2-Dichlorobenzene-d4	12.22	152	114011	4.80	ug/L	0.00
Spiked Amount	5.000	Range	80 - 120	Recovery	=	96.00%

Target Compounds

Target Compounds	R.T.	QIon	Response	Conc	Units	Ovalue
2) Dichlorodifluoromethane	1.39	85	141905	5.209	ug/L	99
3) Chloromethane	1.54	50	150274	4.396	ug/L	99
5) Vinyl chloride	1.62	62	157180	4.846	ug/L	98
6) Bromomethane	1.87	94	77489	4.781	ug/L	97
8) Chloroethane	1.95	64	96878	5.002	ug/L	100
9) Trichlorofluoromethane	2.16	101	215946	5.283	ug/L	98
10) 1,1,2-Trichloro-1,2,2-trif	2.61	101	101695	5.193	ug/L	99
12) 1,1-Dichloroethene	2.61	96	91606	5.059	ug/L	98
13) Acetone	2.66	43	149288	42.539	ug/L	98
14) Carbon disulfide	2.83	76	304640	5.014	ug/L	100
15) Methyl Acetate	2.99	43	35247	4.971	ug/L	100
16) Methylene chloride	3.08	84	121317	4.557	ug/L	97
17) Methyl tert-butyl Ether	3.41	73	190866	4.918	ug/L	99
18) trans-1,2-Dichloroethene	3.39	96	95783	5.051	ug/L	98
19) 1,1-Dichloroethane	3.92	63	184059	5.257	ug/L	100
21) 2-Butanone	4.76	43	224217	47.812	ug/L	96
22) cis-1,2-Dichloroethene	4.72	96	104552	5.139	ug/L	96

Data Path : Z:\VOASRV\HPCHEM1\MSVOA U\DATA\VU121719\
 Data File : VU036262.D
 Acq On : 17 Dec 2019 16:56
 Operator : JC/MD
 Sample : VSTDCCC005EC
 Misc : 25.0mL/MSVOA U/WATER
 ALS Vial : 17 Sample Multiplier: 1

Instrument :
 MSVOA_U
 ClientSampleId :

Quant Time: Dec 18 01:27:32 2019
 Quant Method : Z:\VOASRV\HPCHEM1\MSVOA_U\METHOD\SOMUTR121319WMA.M
 Quant Title : TRACE VOA SOM01.0
 QLast Update : Wed Dec 18 01:23:38 2019
 Response via : Initial Calibration

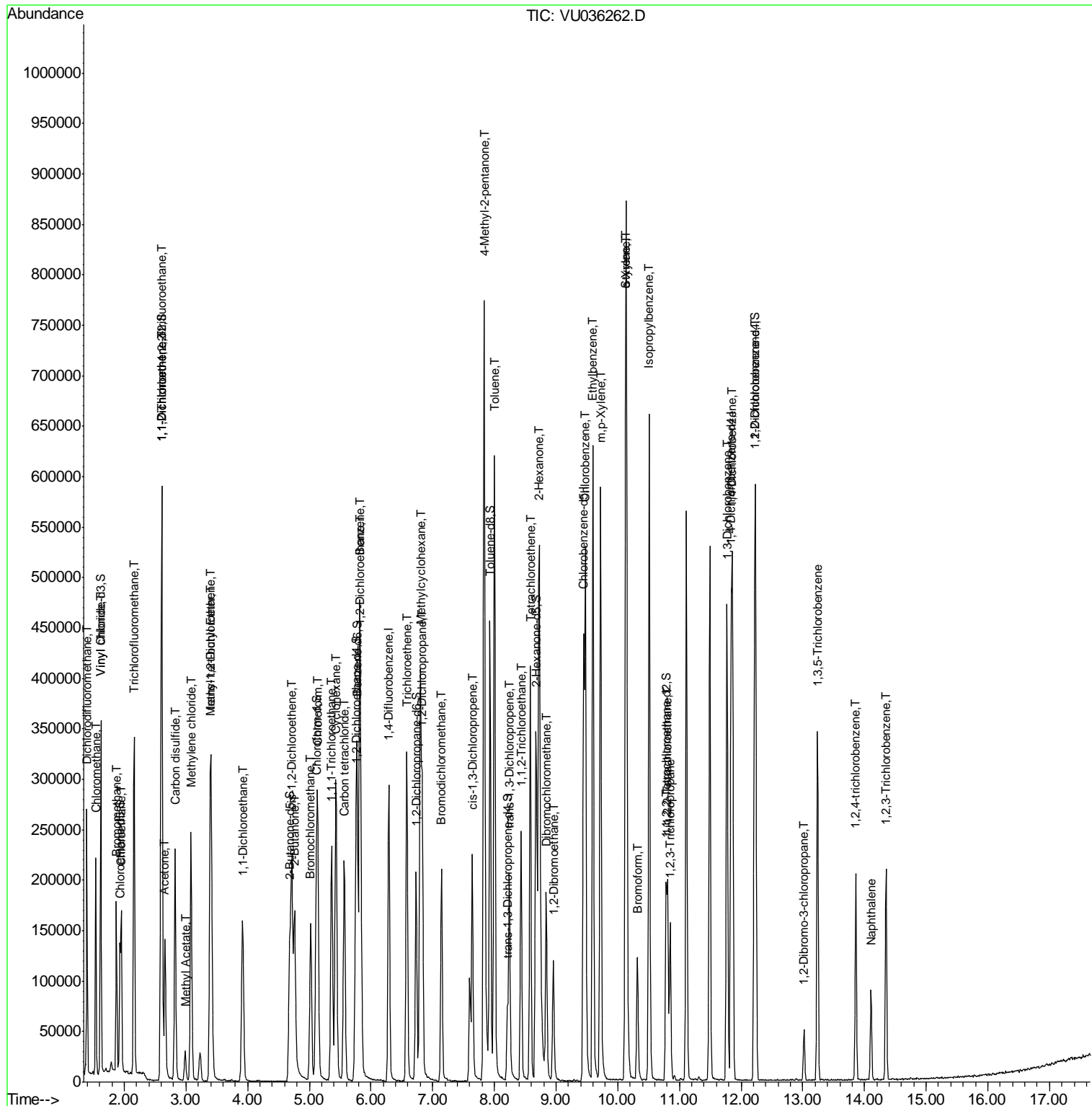
Internal Standards	R.T.	QIon	Response	Conc	Units	Dev(Min)
23) Bromochloromethane	5.02	128	51976	5.281	ug/L	96
25) Chloroform	5.13	83	215771	5.697	ug/L	96
27) 1,2-Dichloroethane	5.84	62	117646	5.237	ug/L	96
29) 1,1,1-Trichloroethane	5.36	97	168567	5.315	ug/L	98
30) Cyclohexane	5.43	56	133168	4.935	ug/L	98
31) Carbon tetrachloride	5.57	117	152130	5.261	ug/L	100
33) Benzene	5.82	78	425230	5.371	ug/L	100
34) Trichloroethene	6.58	95	110377	5.407	ug/L	98
35) Methylcyclohexane	6.80	83	140258	4.833	ug/L	98
37) 1,2-Dichloropropane	6.83	63	104759	5.186	ug/L	99
38) Bromodichloromethane	7.14	83	136896	5.207	ug/L	99
39) cis-1,3-Dichloropropene	7.64	75	138887	5.047	ug/L	99
40) 4-Methyl-2-pentanone	7.83	43	541760	51.276	ug/L	99
42) Toluene	8.00	91	471782	5.559	ug/L	99
44) trans-1,3-Dichloropropene	8.24	75	119776	5.181	ug/L	100
45) 1,1,2-Trichloroethane	8.43	97	78486	5.186	ug/L	95
47) Tetrachloroethene	8.58	164	98807	5.360	ug/L	94
48) 2-Hexanone	8.73	43	418194	53.037	ug/L	99
49) Dibromochloromethane	8.84	129	100911	5.394	ug/L	94
50) 1,2-Dibromoethane	8.96	107	76660	5.310	ug/L	94
51) Chlorobenzene	9.47	112	293586	5.239	ug/L	97
52) Ethylbenzene	9.60	91	448633	5.263	ug/L	99
53) m,p-Xylene	9.72	106	179397	5.462	ug/L	95
54) o-Xylene	10.13	106	170029	5.368	ug/L	90
55) Styrene	10.14	104	291303	5.197	ug/L	99
56) Isopropylbenzene	10.51	105	426087	5.238	ug/L	99
58) 1,1,2,2-Tetrachloroethane	10.81	83	94398	4.899	ug/L	98
59) 1,2,3-Trichloropropane	10.85	75	69720	5.193	ug/L	100
61) Bromoform	10.32	173	59737	5.548	ug/L	99
62) 1,3-Dichlorobenzene	11.77	146	217522	5.198	ug/L	100
63) 1,4-Dichlorobenzene	11.86	146	208179	5.016	ug/L	99
65) 1,2-Dichlorobenzene	12.24	146	201489	5.054	ug/L	97
66) 1,2-Dibromo-3-chloropropan	13.02	75	12415	4.688	ug/L	94
67) 1,3,5-Trichlorobenzene	13.24	180	116456	3.714	ug/L	97
68) 1,2,4-trichlorobenzene	13.86	180	65635	3.186	ug/L	99
69) Naphthalene	14.11	128	71052	2.711	ug/L	99
70) 1,2,3-Trichlorobenzene	14.35	180	66227	3.324	ug/L	98

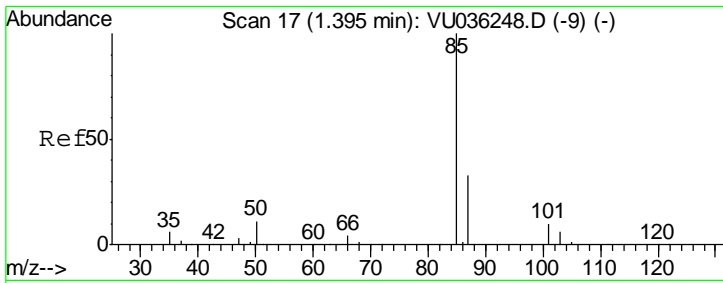
(#) = qualifier out of range (m) = manual integration (+) = signals summed

Data Path : Z:\VOASRV\HPCHEM1\MSVOA U\DATA\VU121719\
 Data File : VU036262.D
 Acq On : 17 Dec 2019 16:56
 Operator : JC/MD
 Sample : VSTDCCC005EC
 Misc : 25.0mL/MSVOA U/WATER
 ALS Vial : 17 Sample Multiplier: 1

Instrument :
 MSVOA_U
 Client Sampled :

Quant Time: Dec 18 01:27:32 2019
 Quant Method : Z:\VOASRV\HPCHEM1\MSVOA_U\METHOD\SOMUTR121319WMA.M
 Quant Title : TRACE VOA SOM01.0
 QLast Update : Wed Dec 18 01:23:38 2019
 Response via : Initial Calibration

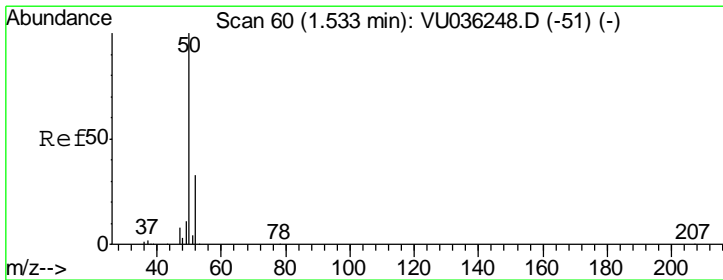
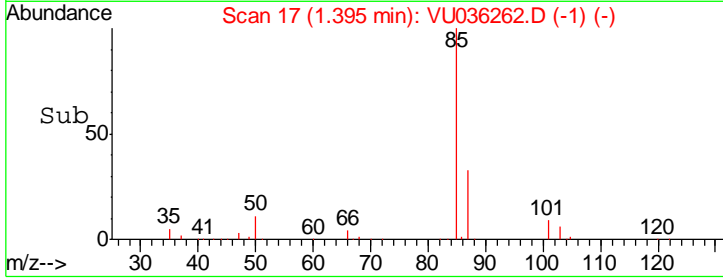
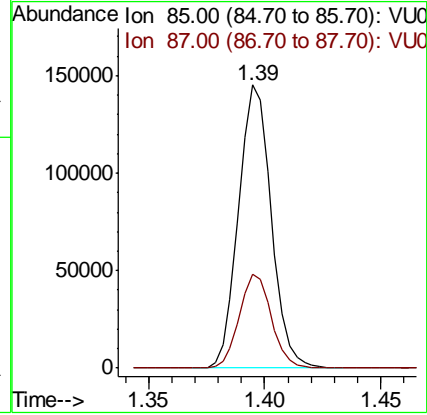
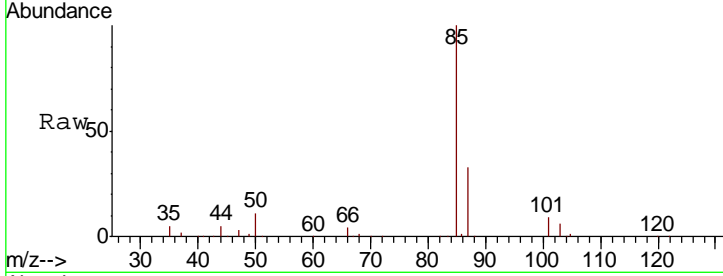




#2
 Dichlorodifluoromethane
 Concen: 5.209 ug/L
 RT: 1.39 min Scan# 17
 Delta R.T. -0.00 min
 Lab File: VU036262.D
 Acq: 17 Dec 2019 16:56

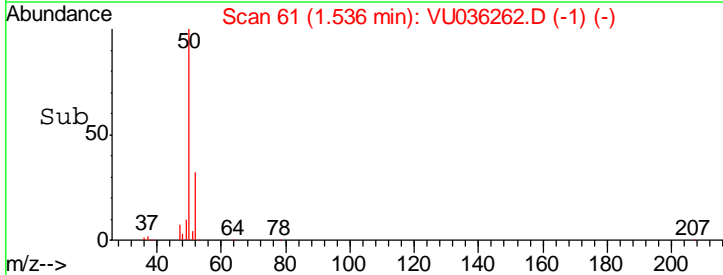
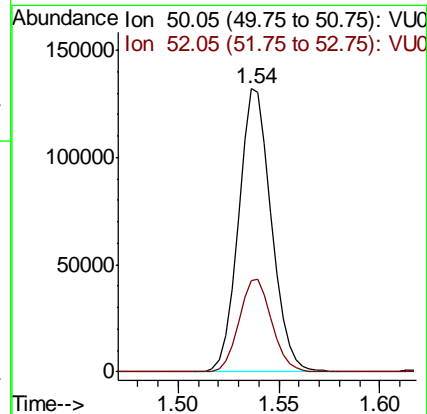
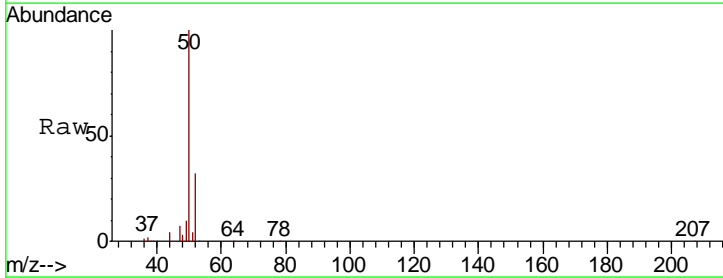
Instrument :
 MSVOA_U
 ClientSampled :

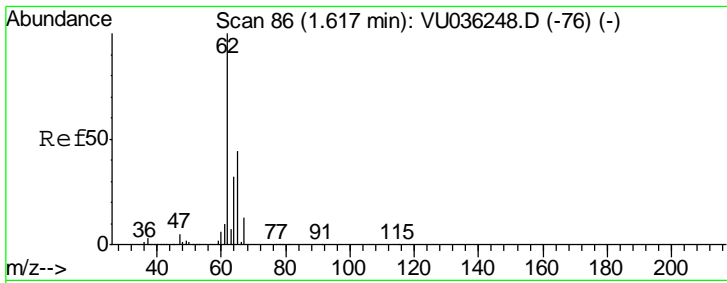
Tgt Ion	Resp	Lower	Upper
85	141905		
87	32.6	26.5	39.7



#3
 Chloromethane
 Concen: 4.396 ug/L
 RT: 1.54 min Scan# 61
 Delta R.T. 0.00 min
 Lab File: VU036262.D
 Acq: 17 Dec 2019 16:56

Tgt Ion	Resp	Lower	Upper
50	150274		
52	32.3	23.1	42.9

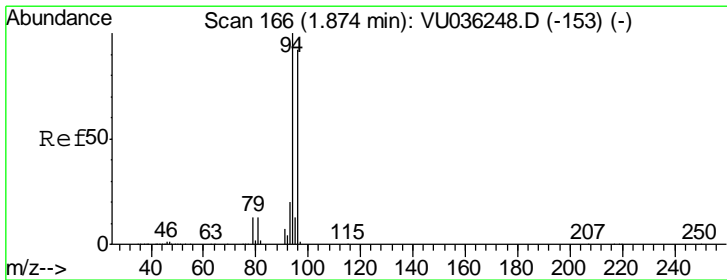
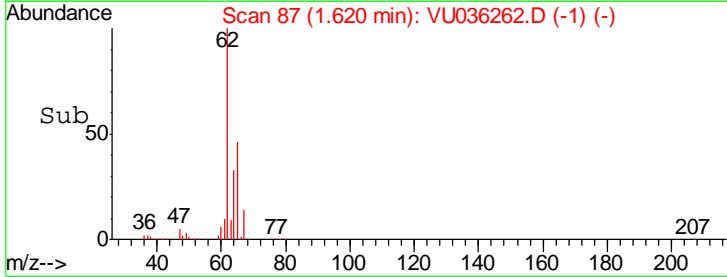
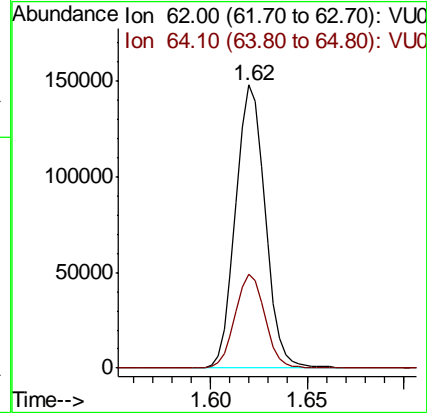
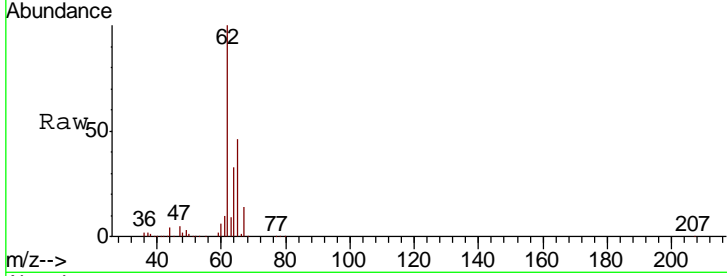




#5
 Vinyl chloride
 Concen: 4.846 ug/L
 RT: 1.62 min Scan# 87
 Delta R.T. 0.00 min
 Lab File: VU036262.D
 Acq: 17 Dec 2019 16:56

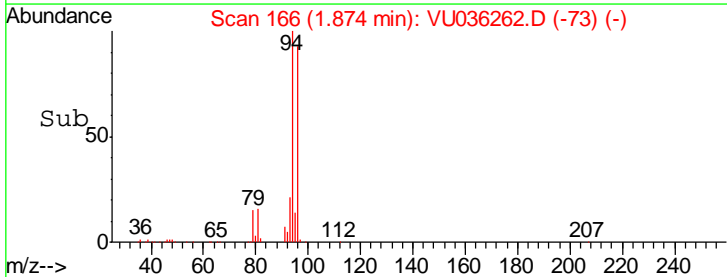
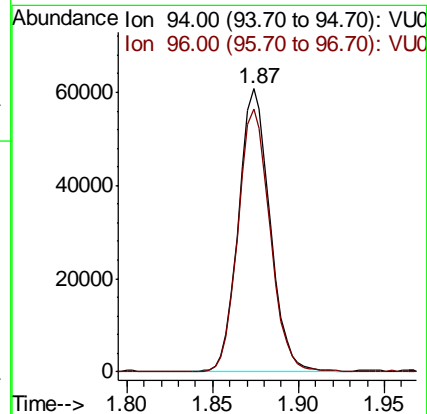
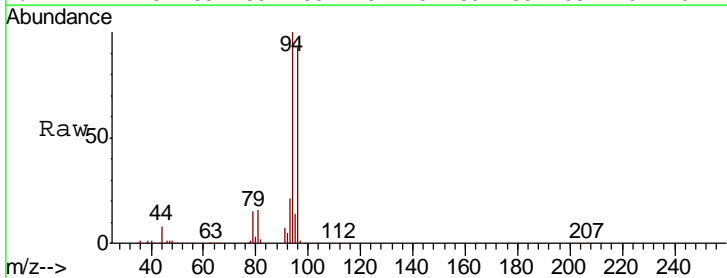
Instrument :
 MSVOA_U
 ClientSampled :

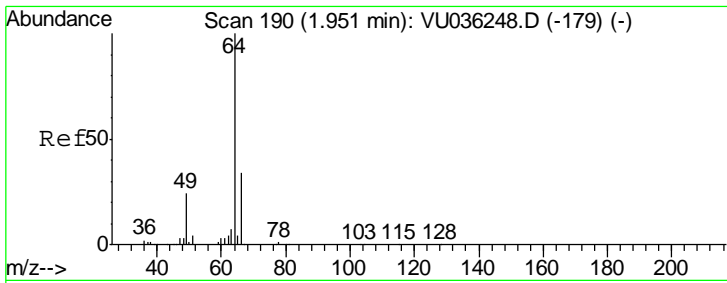
Tgt Ion	Resp	Lower	Upper
62	157180		
64	33.3	22.4	41.6



#6
 Bromomethane
 Concen: 4.781 ug/L
 RT: 1.87 min Scan# 166
 Delta R.T. -0.00 min
 Lab File: VU036262.D
 Acq: 17 Dec 2019 16:56

Tgt Ion	Resp	Lower	Upper
94	77489		
96	93.1	62.9	116.9

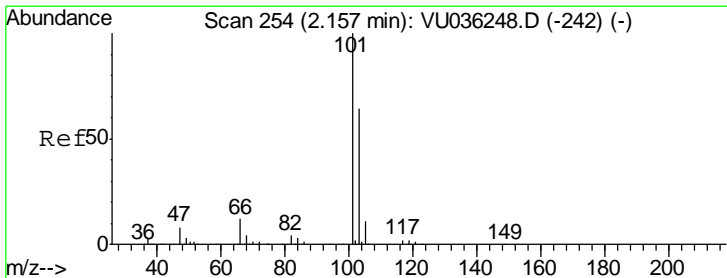
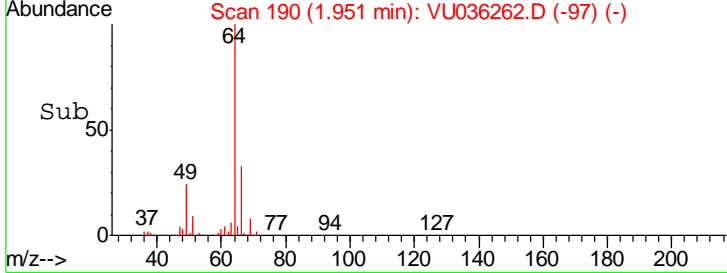
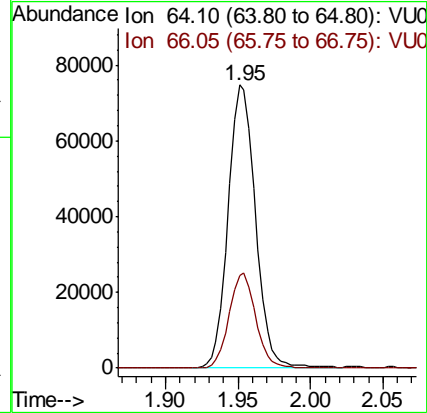
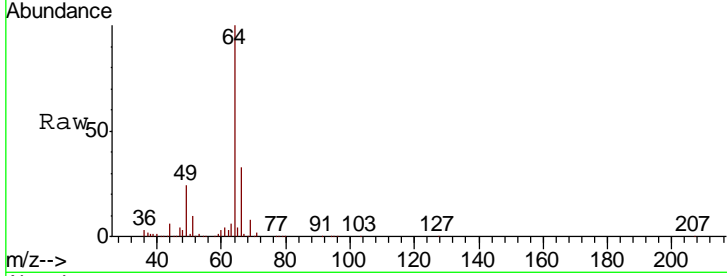




#8
 Chloroethane
 Concen: 5.002 ug/L
 RT: 1.95 min Scan# 190
 Delta R.T. -0.00 min
 Lab File: VU036262.D
 Acq: 17 Dec 2019 16:56

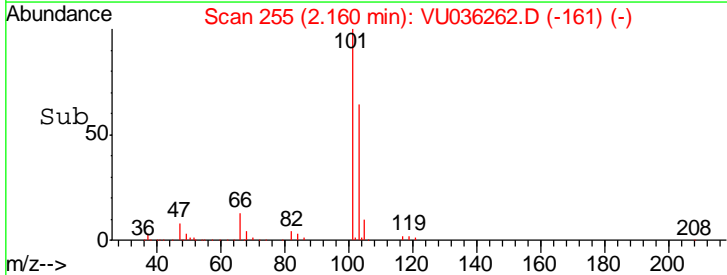
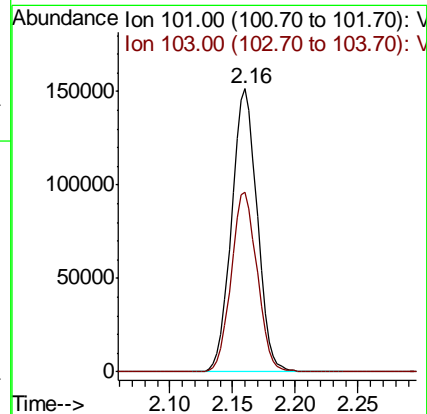
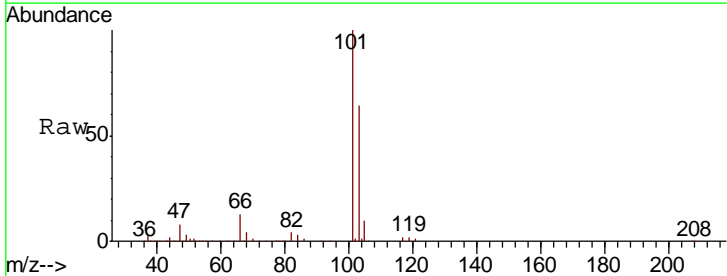
Instrument :
 MSVOA_U
 ClientSampled :

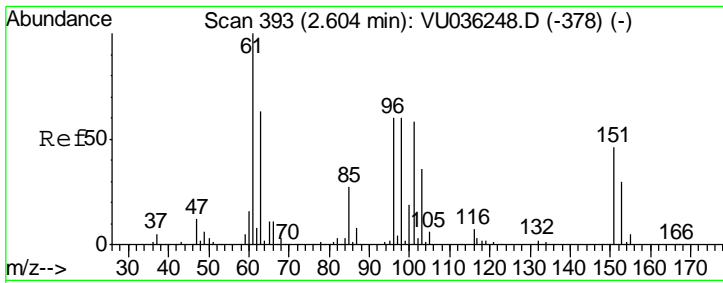
Tgt Ion	Resp	Lower	Upper
64	96878		
66	32.9	23.1	42.9



#9
 Trichlorofluoromethane
 Concen: 5.283 ug/L
 RT: 2.16 min Scan# 255
 Delta R.T. 0.00 min
 Lab File: VU036262.D
 Acq: 17 Dec 2019 16:56

Tgt Ion	Resp	Lower	Upper
101	215946		
103	64.6	50.4	75.6

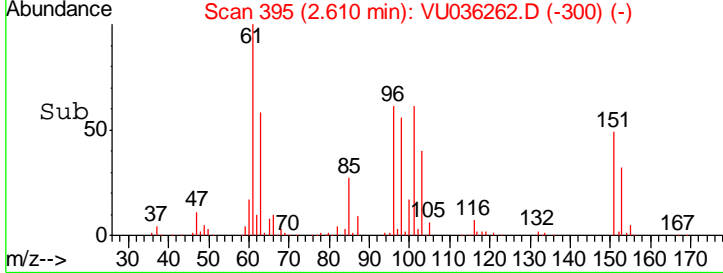
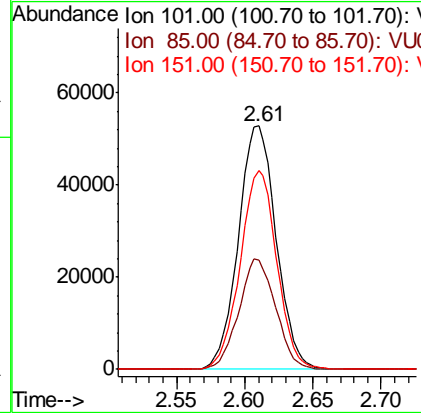
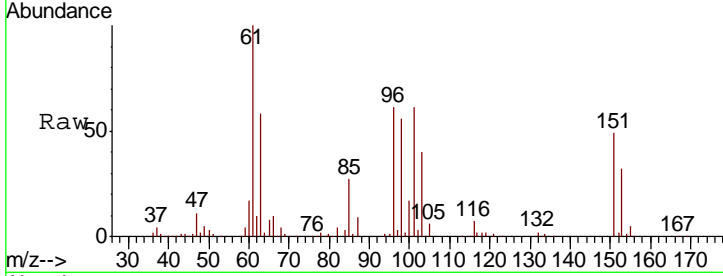




#10
 1,1,2-Trichloro-1,2,2-trifluoroethane
 Concen: 5.193 ug/L
 RT: 2.61 min Scan# 395
 Delta R.T. 0.01 min
 Lab File: VU036262.D
 Acq: 17 Dec 2019 16:56

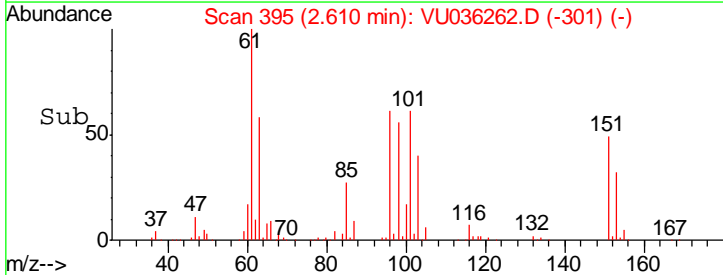
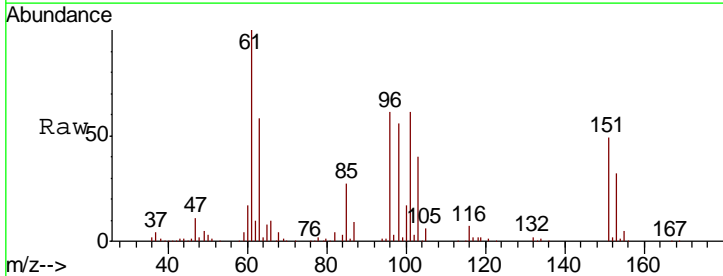
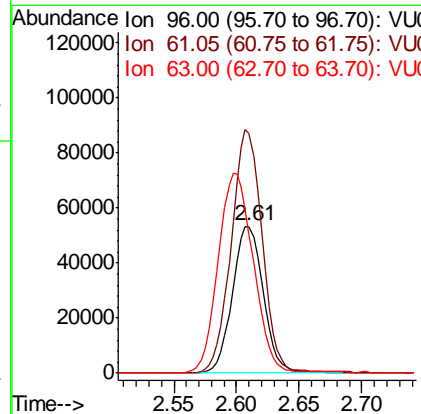
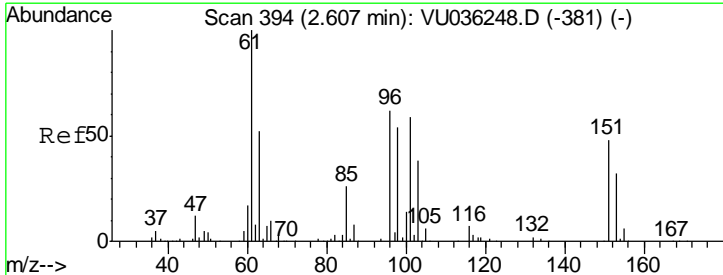
Instrument :
 MSVOA_U
 ClientSampled :

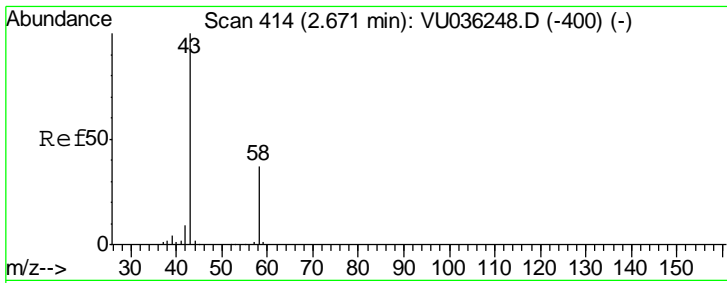
Tgt Ion	Resp	Lower	Upper
101	101695		
Ion Ratio			
101	100		
85	44.1	35.0	52.6
151	79.3	63.9	95.9



#12
 1,1-Dichloroethene
 Concen: 5.059 ug/L
 RT: 2.61 min Scan# 395
 Delta R.T. 0.00 min
 Lab File: VU036262.D
 Acq: 17 Dec 2019 16:56

Tgt Ion	Resp	Lower	Upper
96	91606		
Ion Ratio			
96	100		
61	163.6	114.0	211.8
63	94.8	63.6	118.0



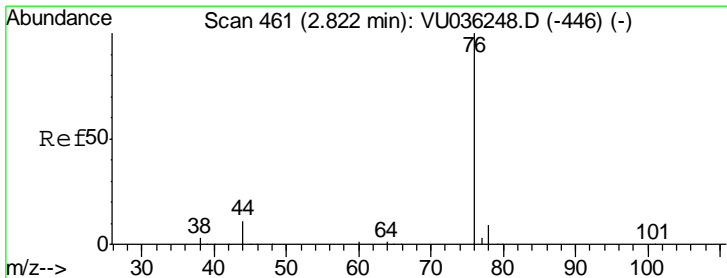
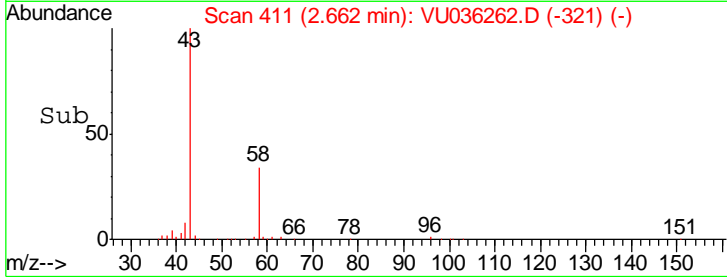
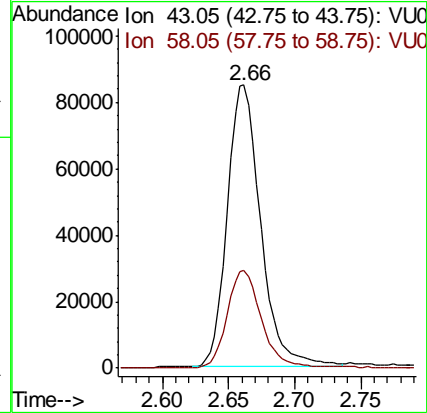
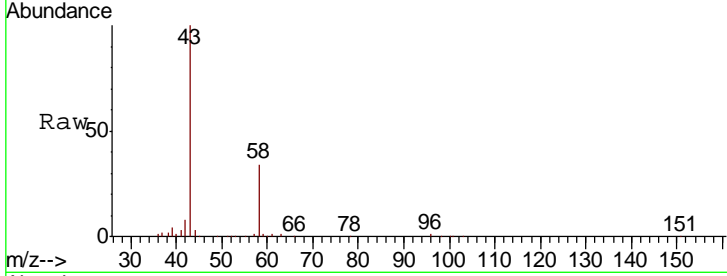


#13
 Acetone
 Concen: 42.539 ug/L
 RT: 2.66 min Scan# 411
 Delta R.T. -0.01 min
 Lab File: VU036262.D
 Acq: 17 Dec 2019 16:56

Instrument :
 MSVOA_U
 ClientSampled :

Tgt Ion: 43 Resp: 149288

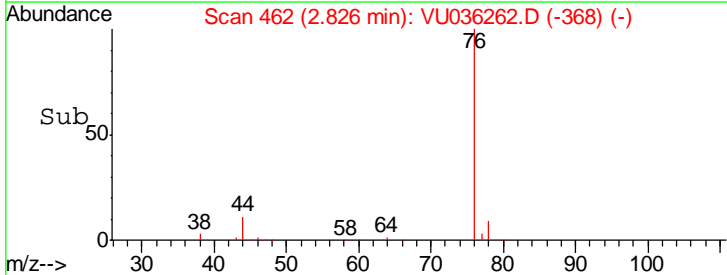
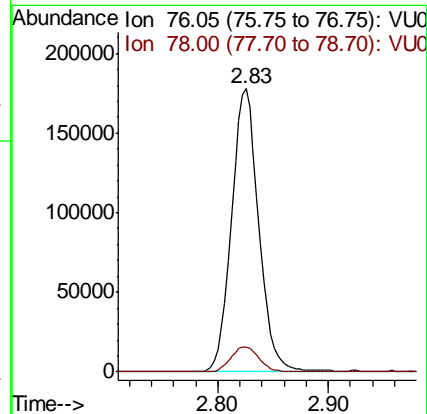
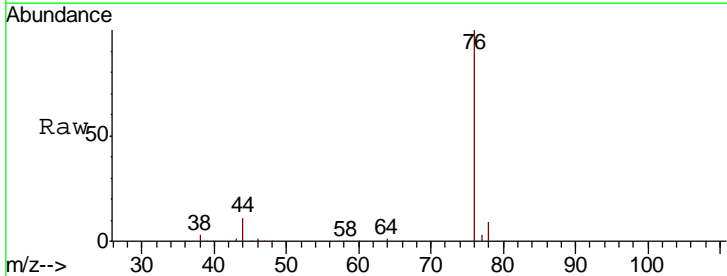
Ion	Ratio	Lower	Upper
43	100		
58	34.8	0.0	67.6

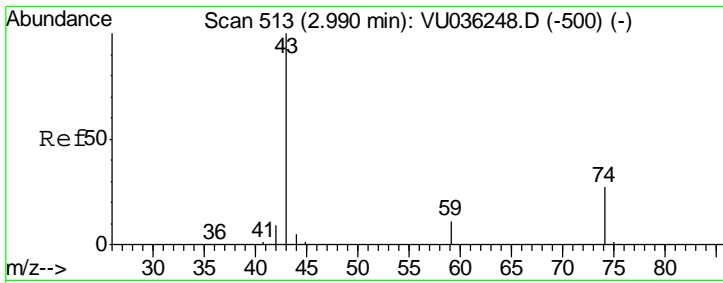


#14
 Carbon disulfide
 Concen: 5.014 ug/L
 RT: 2.83 min Scan# 462
 Delta R.T. 0.00 min
 Lab File: VU036262.D
 Acq: 17 Dec 2019 16:56

Tgt Ion: 76 Resp: 304640

Ion	Ratio	Lower	Upper
76	100		
78	8.8	7.1	10.7

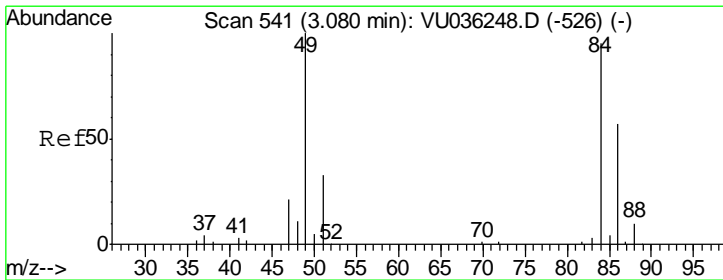
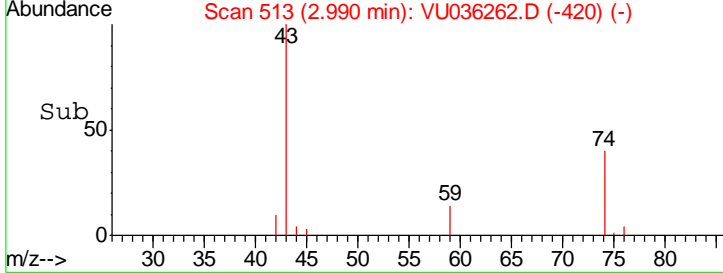
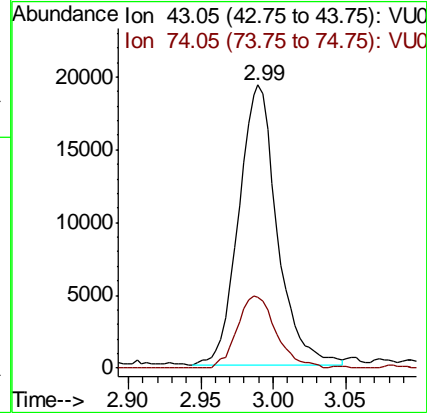
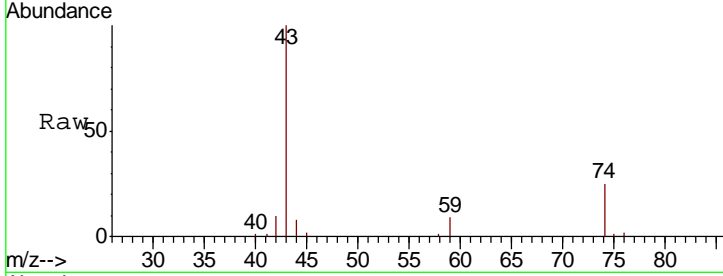




#15
 Methyl Acetate
 Concen: 4.971 ug/L
 RT: 2.99 min Scan# 513
 Delta R.T. -0.00 min
 Lab File: VU036262.D
 Acq: 17 Dec 2019 16:56

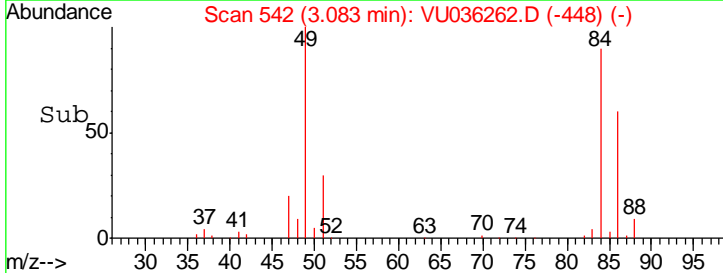
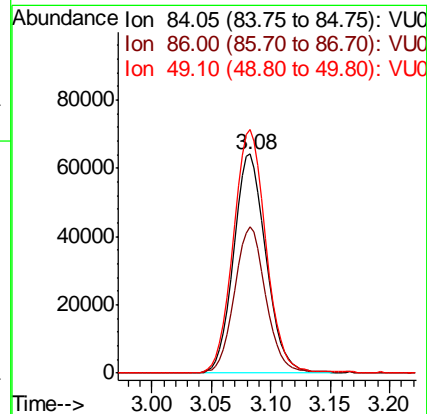
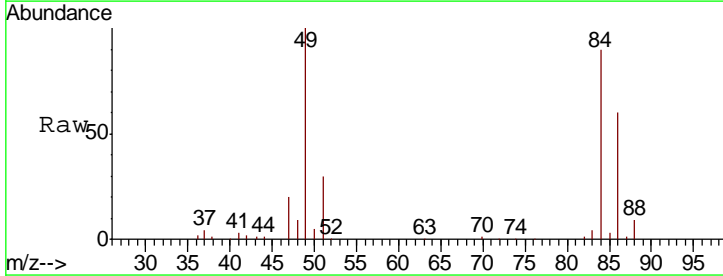
Instrument : MSVOA_U
 ClientSampled :

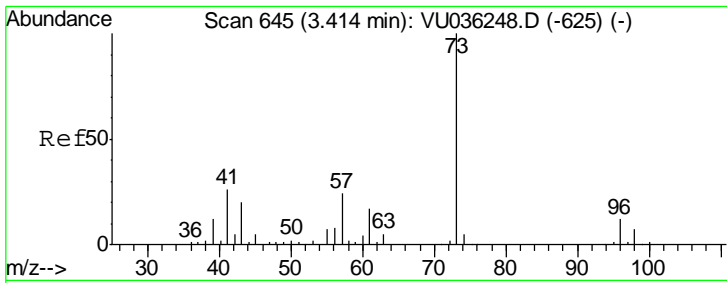
Tgt Ion	Resp	Lower	Upper
43	100		
74	26.1	20.8	31.2



#16
 Methylene chloride
 Concen: 4.557 ug/L
 RT: 3.08 min Scan# 542
 Delta R.T. 0.00 min
 Lab File: VU036262.D
 Acq: 17 Dec 2019 16:56

Tgt Ion	Resp	Lower	Upper
84	100		
86	66.5	43.0	79.8
49	111.1	77.3	143.5

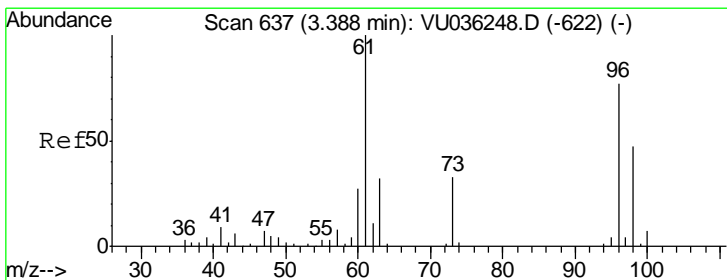
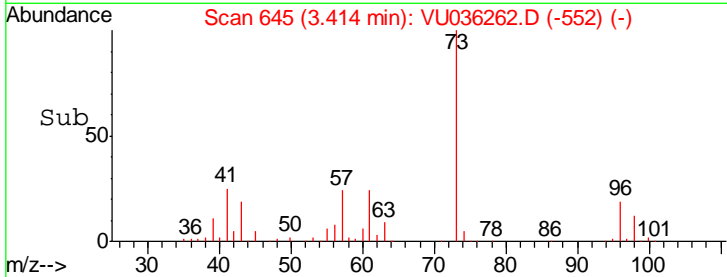
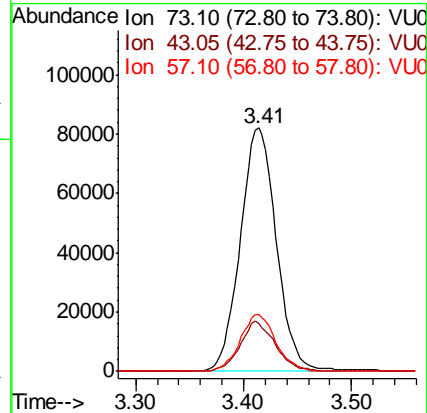
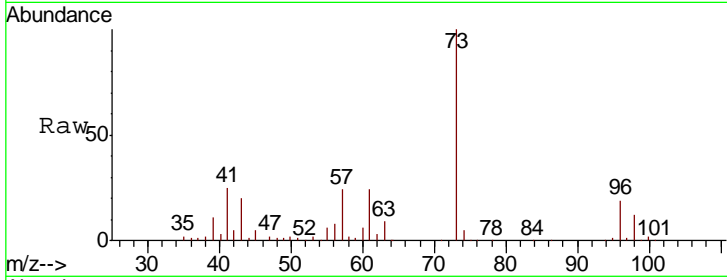




#17
 Methyl tert-butyl Ether
 Concen: 4.918 ug/L
 RT: 3.41 min Scan# 645
 Delta R.T. -0.00 min
 Lab File: VU036262.D
 Acq: 17 Dec 2019 16:56

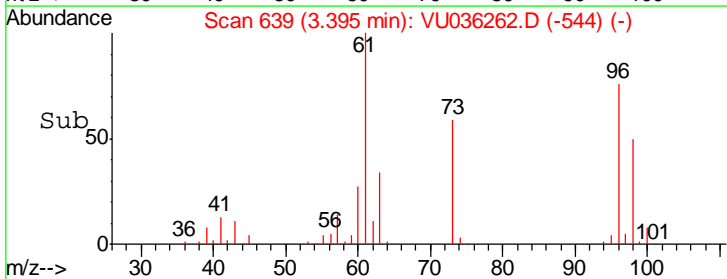
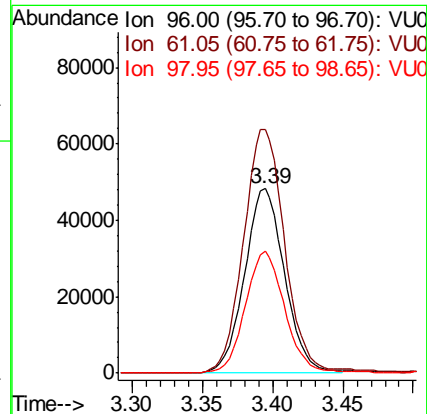
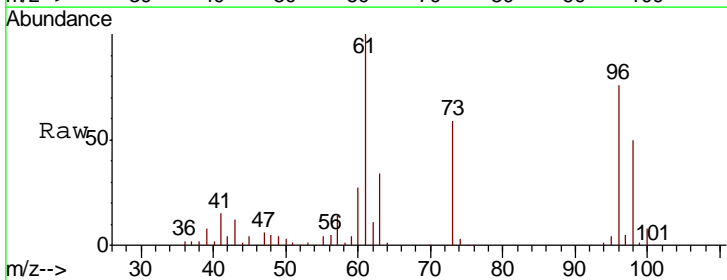
Instrument :
 MSVOA_U
 ClientSampled :

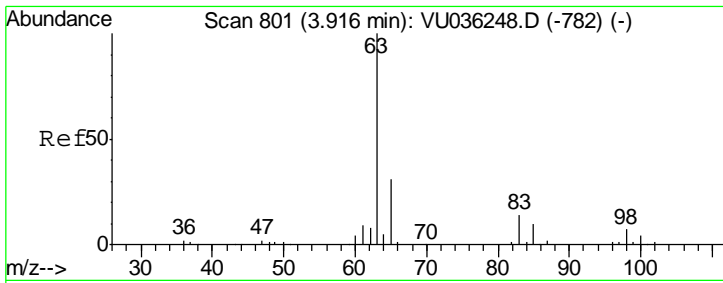
Tgt Ion	Resp	Lower	Upper
73	190866		
43	20.0	15.3	22.9
57	23.0	18.2	27.2



#18
 trans-1,2-Dichloroethene
 Concen: 5.051 ug/L
 RT: 3.39 min Scan# 639
 Delta R.T. 0.01 min
 Lab File: VU036262.D
 Acq: 17 Dec 2019 16:56

Tgt Ion	Resp	Lower	Upper
96	95783		
61	132.2	94.8	176.2
98	66.0	46.8	86.8

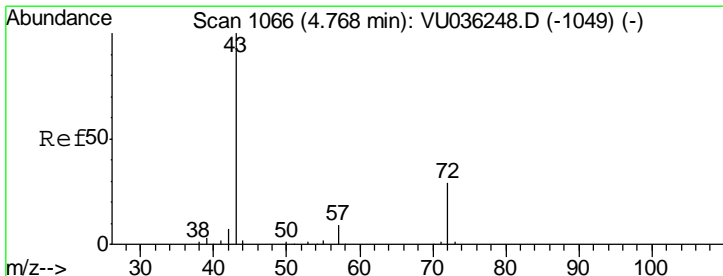
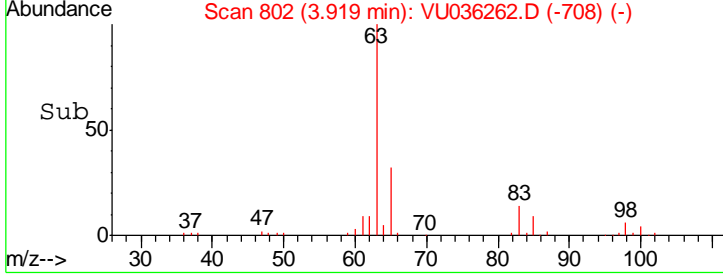
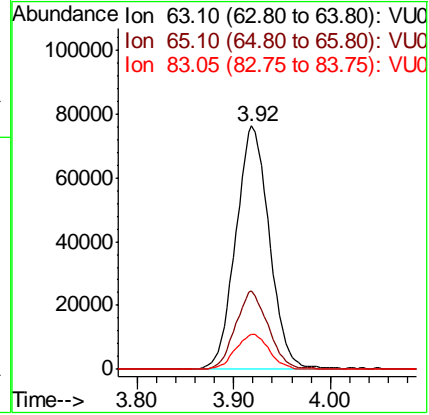
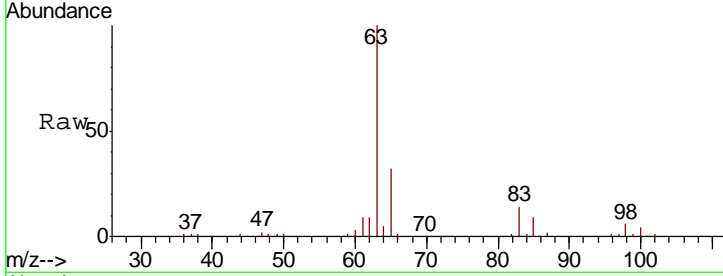




#19
 1,1-Dichloroethane
 Concen: 5.257 ug/L
 RT: 3.92 min Scan# 802
 Delta R.T. 0.00 min
 Lab File: VU036262.D
 Acq: 17 Dec 2019 16:56

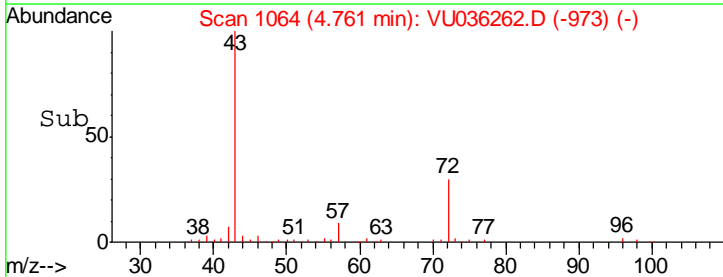
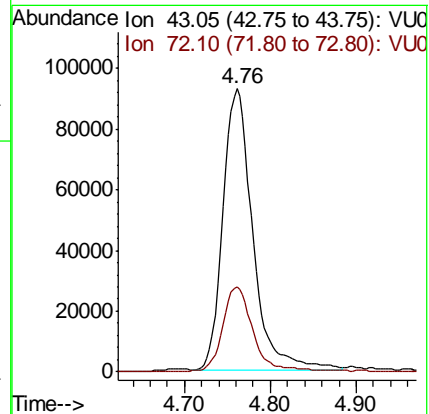
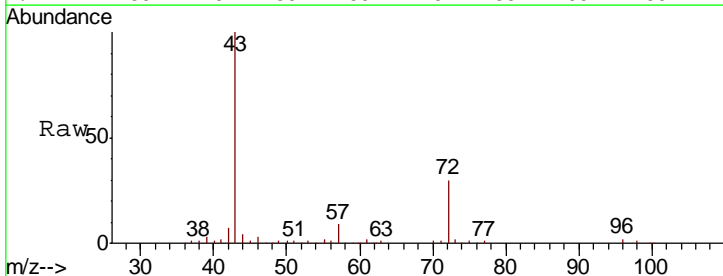
Instrument :
 MSVOA_U
 ClientSampled :

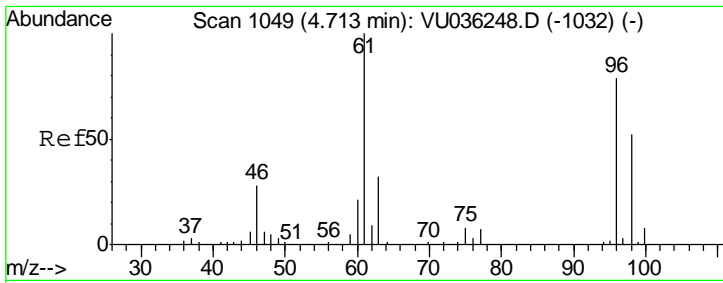
Tgt Ion	Resp	Lower	Upper
63	184059		
65	32.3	22.6	42.0
83	14.2	9.7	18.1



#21
 2-Butanone
 Concen: 47.812 ug/L
 RT: 4.76 min Scan# 1064
 Delta R.T. -0.01 min
 Lab File: VU036262.D
 Acq: 17 Dec 2019 16:56

Tgt Ion	Resp	Lower	Upper
43	224217		
72	30.8	14.4	43.4

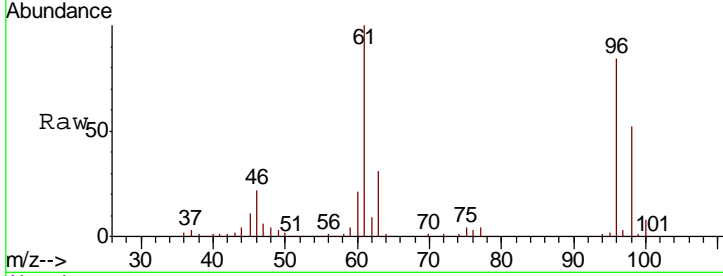




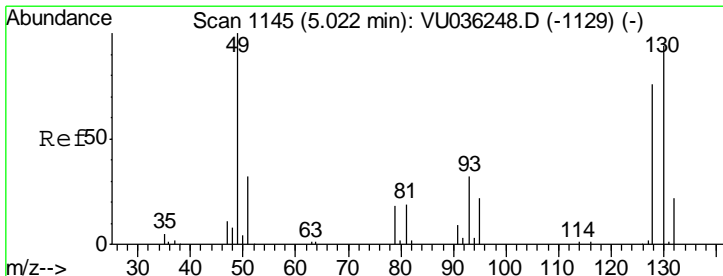
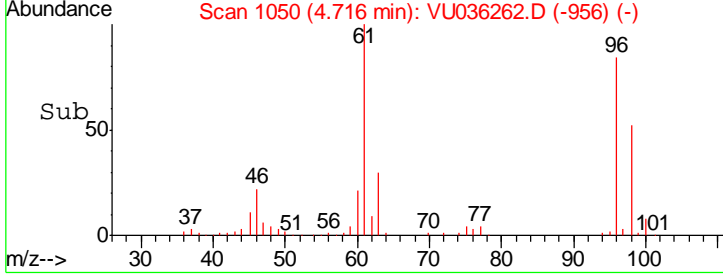
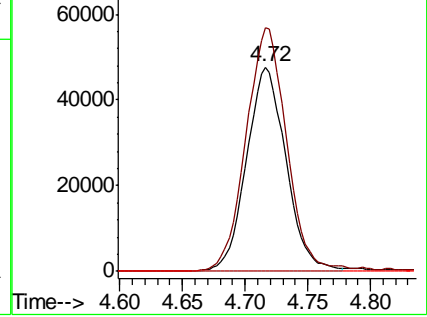
#22
 cis-1,2-Dichloroethene
 Concen: 5.139 ug/L
 RT: 4.72 min Scan# 1050
 Delta R.T. 0.00 min
 Lab File: VU036262.D
 Acq: 17 Dec 2019 16:56

Instrument : MSVOA_U
 ClientSampled :

Tgt Ion	Resp	Lower	Upper
96	104552		
61	119.3	86.7	161.1
68	0.0	0.0	0.0

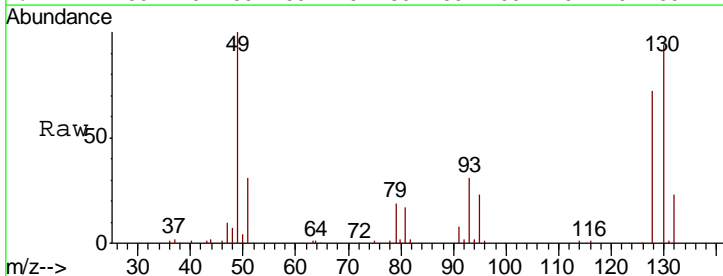


Abundance Ion 96.00 (95.70 to 96.70): VU0
 Ion 61.05 (60.75 to 61.75): VU0
 Ion 68.15 (67.85 to 68.85): VU0

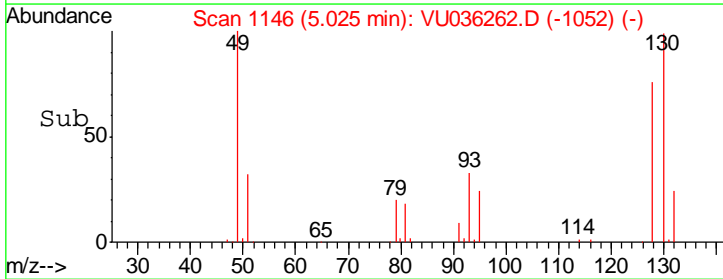
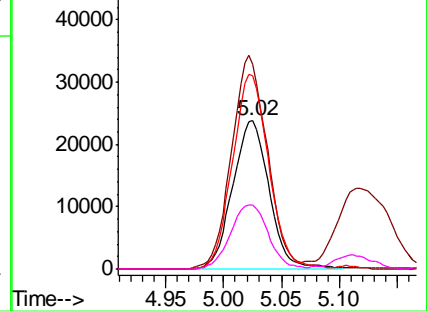


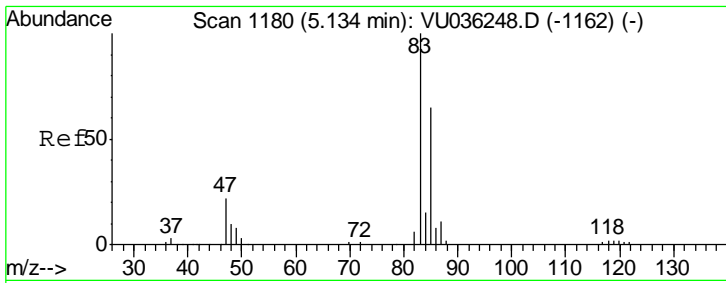
#23
 Bromochloromethane
 Concen: 5.281 ug/L
 RT: 5.02 min Scan# 1146
 Delta R.T. 0.00 min
 Lab File: VU036262.D
 Acq: 17 Dec 2019 16:56

Tgt Ion	Resp	Lower	Upper
128	51976		
49	138.9	97.6	181.4
130	130.4	85.9	159.5
51	43.1	37.0	55.4



Abundance Ion 127.90 (127.60 to 128.60): V
 Ion 49.10 (48.80 to 49.80): VU0
 Ion 129.95 (129.65 to 130.65): V
 Ion 51.05 (50.75 to 51.75): VU0

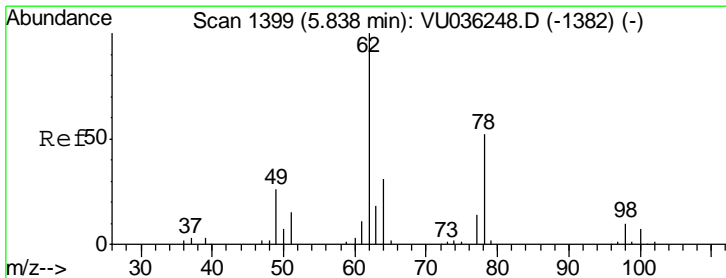
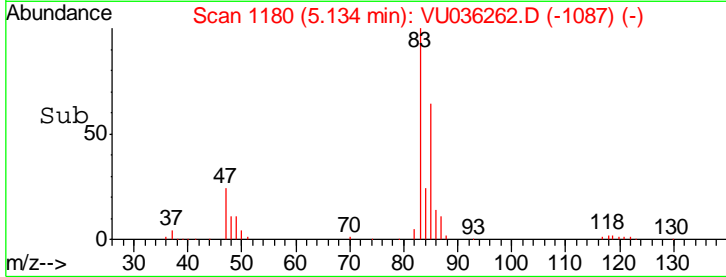
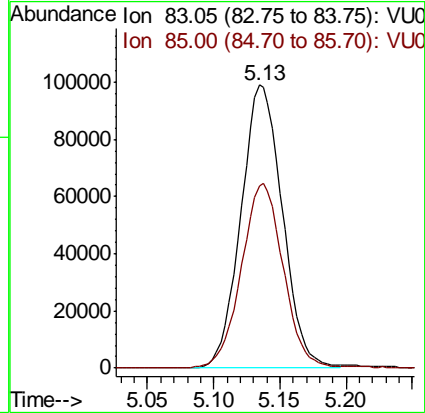
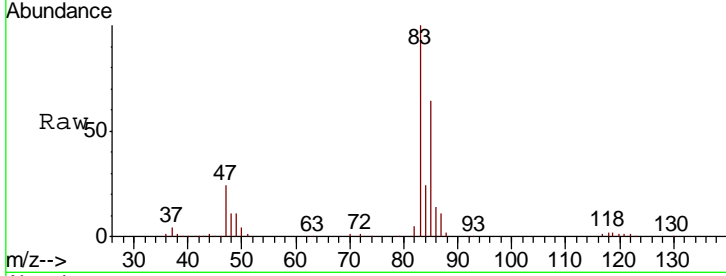




#25
 Chloroform
 Concen: 5.697 ug/L
 RT: 5.13 min Scan# 1180
 Delta R.T. -0.00 min
 Lab File: VU036262.D
 Acq: 17 Dec 2019 16:56

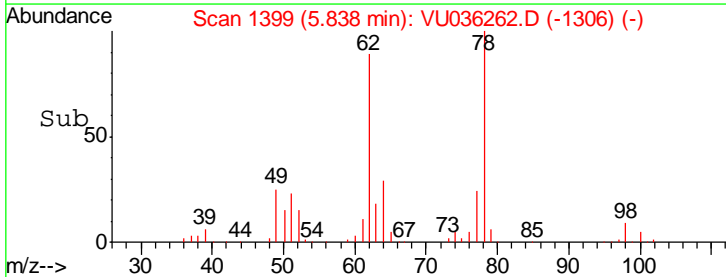
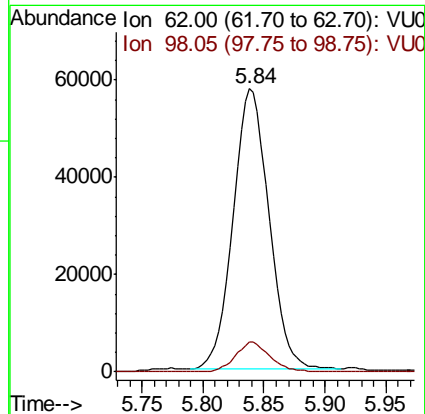
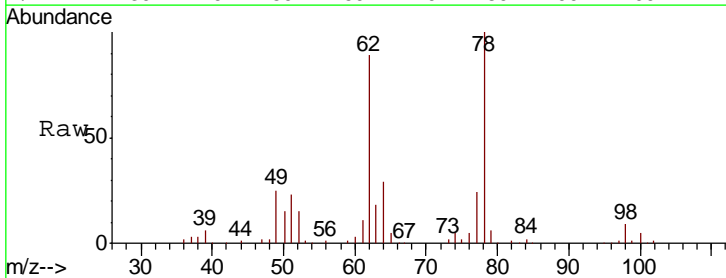
Instrument : MSVOA_U
 ClientSampled :

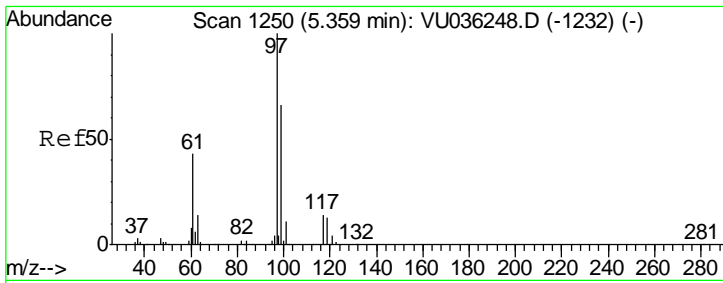
Tgt Ion	Resp	Lower	Upper
83	215771		
85	64.3	47.5	88.1



#27
 1,2-Dichloroethane
 Concen: 5.237 ug/L
 RT: 5.84 min Scan# 1399
 Delta R.T. -0.00 min
 Lab File: VU036262.D
 Acq: 17 Dec 2019 16:56

Tgt Ion	Resp	Lower	Upper
62	117646		
98	10.4	7.3	10.9

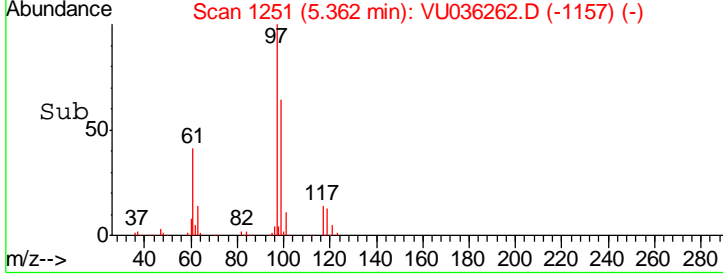
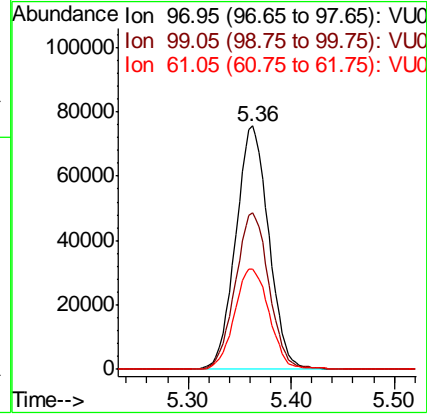
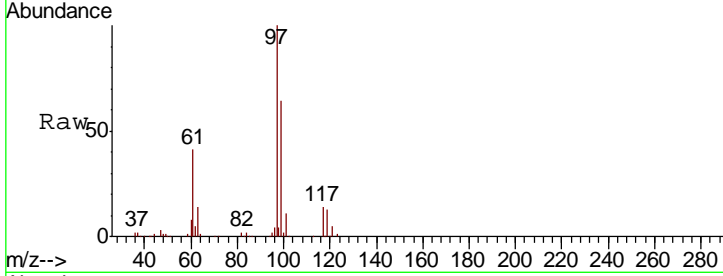




#29
 1,1,1-Trichloroethane
 Concen: 5.315 ug/L
 RT: 5.36 min Scan# 1251
 Delta R.T. 0.00 min
 Lab File: VU036262.D
 Acq: 17 Dec 2019 16:56

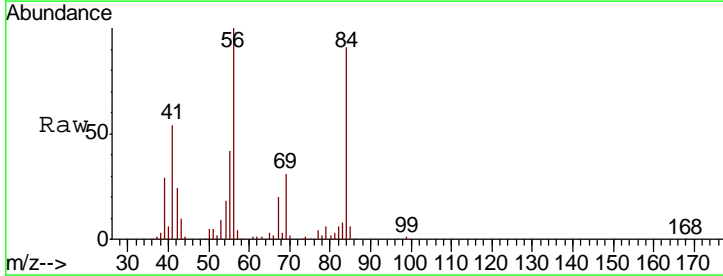
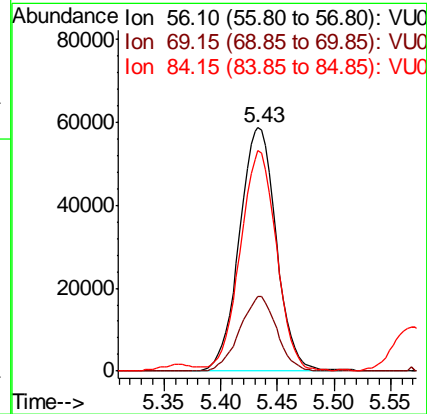
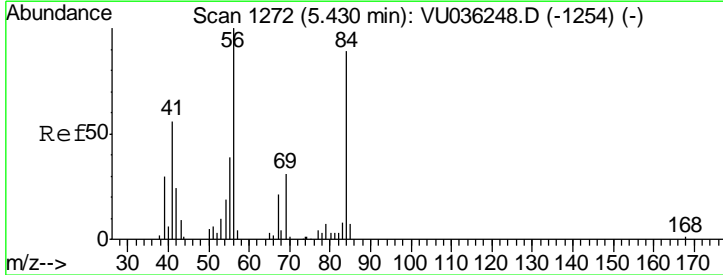
Instrument :
 MSVOA_U
 ClientSampled :

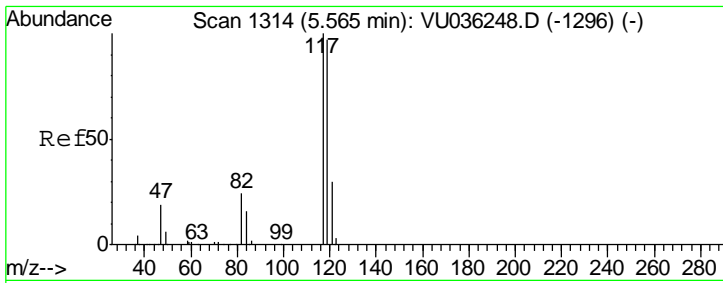
Tgt Ion	Resp	Lower	Upper
97	168567		
99	65.8	51.4	77.2
61	43.1	35.0	52.6



#30
 Cyclohexane
 Concen: 4.935 ug/L
 RT: 5.43 min Scan# 1273
 Delta R.T. 0.00 min
 Lab File: VU036262.D
 Acq: 17 Dec 2019 16:56

Tgt Ion	Resp	Lower	Upper
56	133168		
69	30.7	25.6	38.4
84	89.5	73.0	109.4

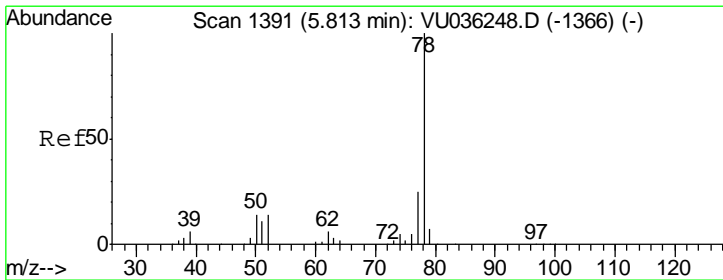
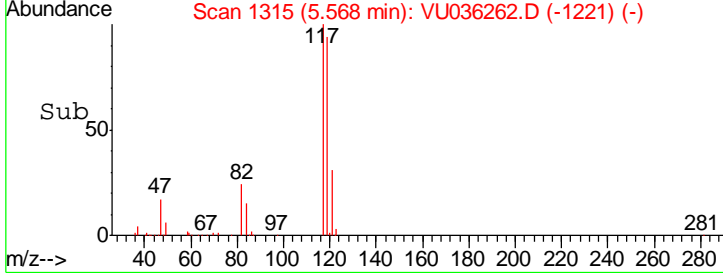
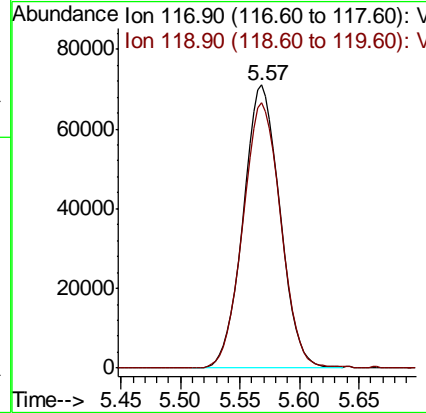
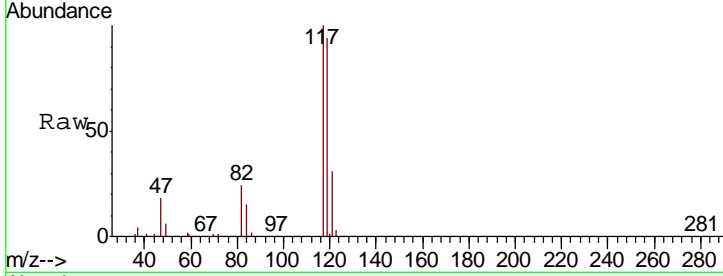




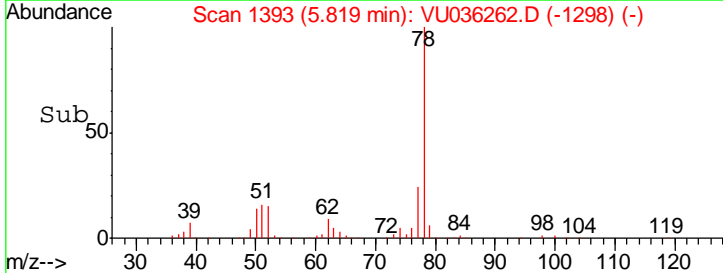
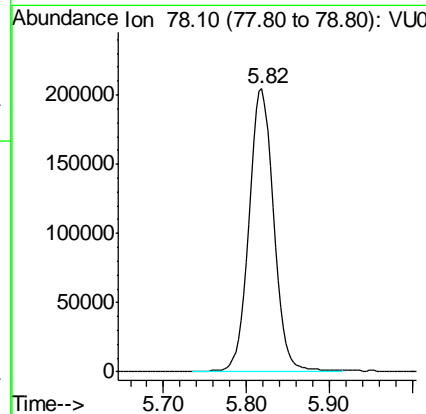
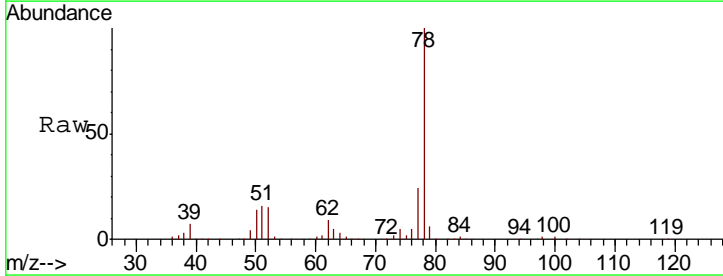
#31
 Carbon tetrachloride
 Concen: 5.261 ug/L
 RT: 5.57 min Scan# 1315
 Delta R.T. 0.00 min
 Lab File: VU036262.D
 Acq: 17 Dec 2019 16:56

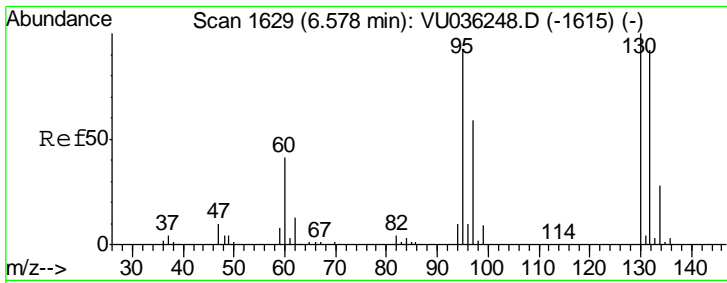
Instrument :
 MSVOA_U
 ClientSampled :

Tgt Ion: 117 Resp: 152130
 Ion Ratio Lower Upper
 117 100
 119 96.7 77.2 115.8



#33
 Benzene
 Concen: 5.371 ug/L
 RT: 5.82 min Scan# 1393
 Delta R.T. 0.01 min
 Lab File: VU036262.D
 Acq: 17 Dec 2019 16:56
 Tgt Ion: 78 Resp: 425230

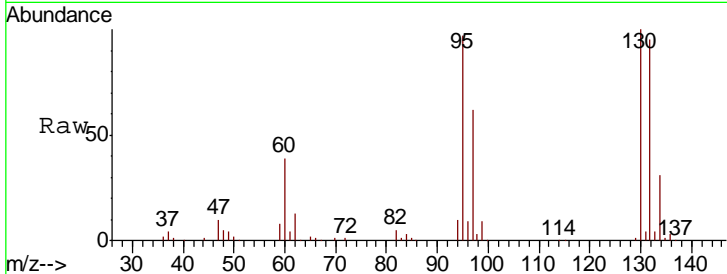




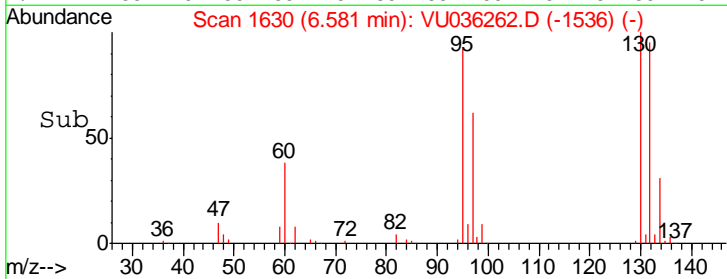
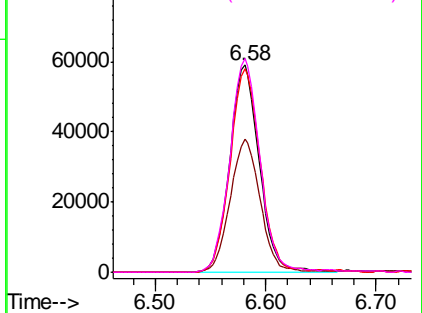
#34
 Trichloroethene
 Concen: 5.407 ug/L
 RT: 6.58 min Scan# 1630
 Delta R.T. 0.00 min
 Lab File: VU036262.D
 Acq: 17 Dec 2019 16:56

Instrument :
 MSVOA_U
 ClientSampled :

Tgt Ion	Resp	Lower	Upper
95	110377		
97	64.3	43.6	81.0
132	98.2	69.6	129.2
130	103.2	70.3	130.7

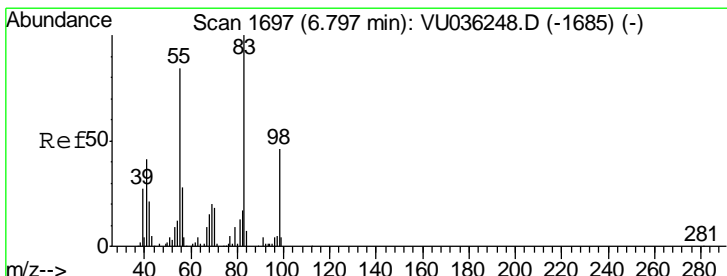


Abundance Ion 95.00 (94.70 to 95.70): VUC
 Ion 96.95 (96.65 to 97.65): VUC
 Ion 131.95 (131.65 to 132.65): VUC
 Ion 129.95 (129.65 to 130.65): VUC

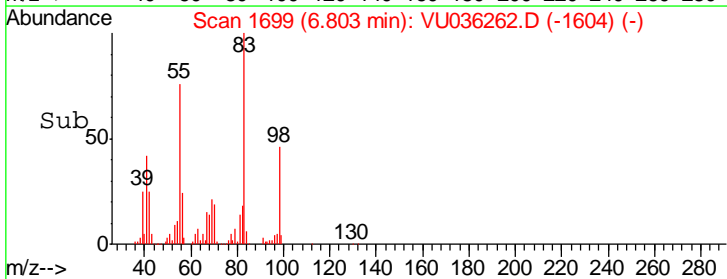
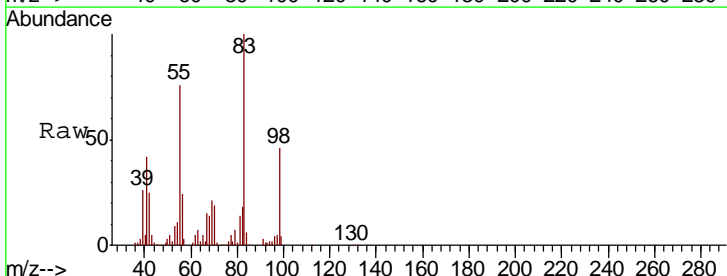
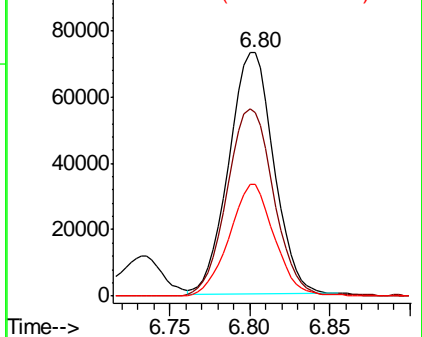


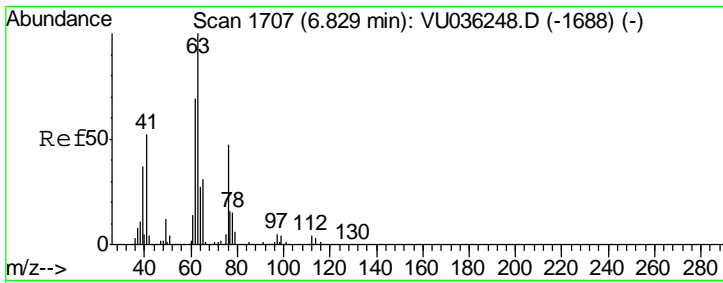
#35
 Methylcyclohexane
 Concen: 4.833 ug/L
 RT: 6.80 min Scan# 1699
 Delta R.T. 0.01 min
 Lab File: VU036262.D
 Acq: 17 Dec 2019 16:56

Tgt Ion	Resp	Lower	Upper
83	140258		
55	80.2	62.6	94.0
98	46.2	36.2	54.2



Abundance Ion 83.15 (82.85 to 83.85): VUC
 Ion 55.10 (54.80 to 55.80): VUC
 Ion 98.15 (97.85 to 98.85): VUC

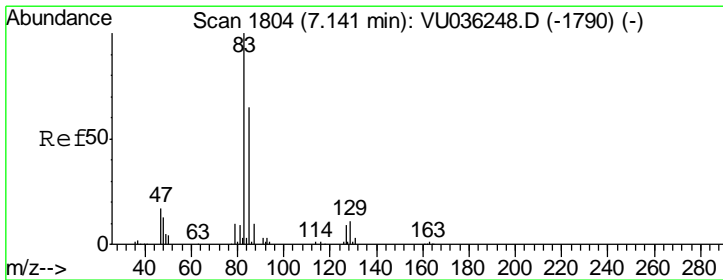
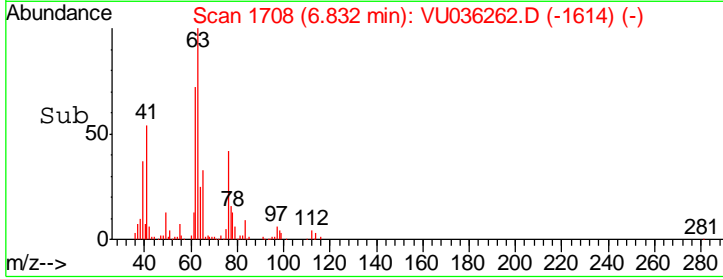
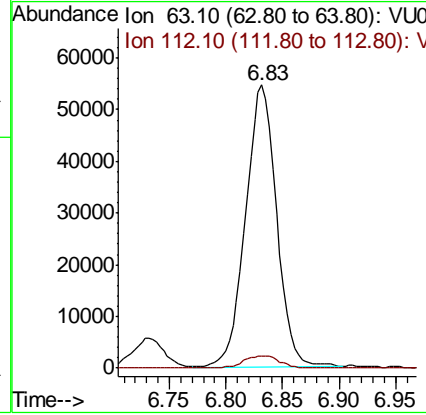
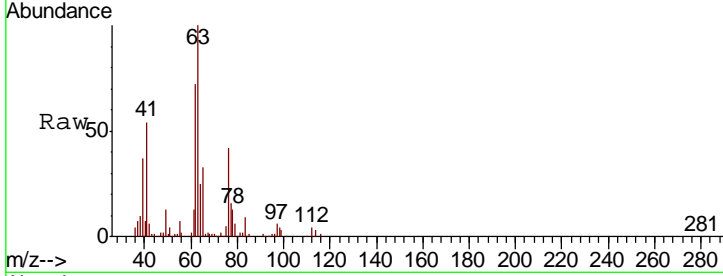




#37
 1,2-Dichloropropane
 Concen: 5.186 ug/L
 RT: 6.83 min Scan# 1708
 Delta R.T. 0.00 min
 Lab File: VU036262.D
 Acq: 17 Dec 2019 16:56

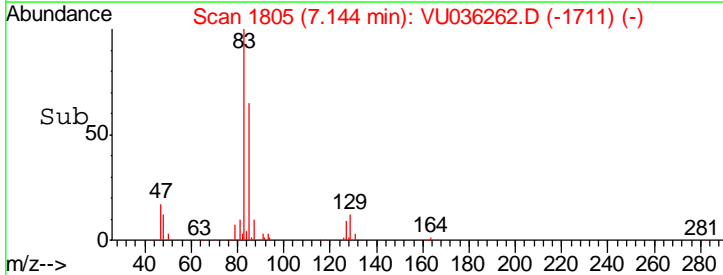
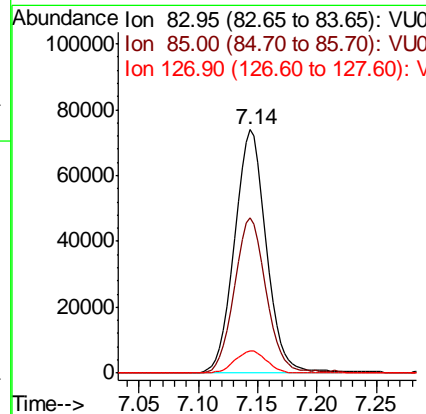
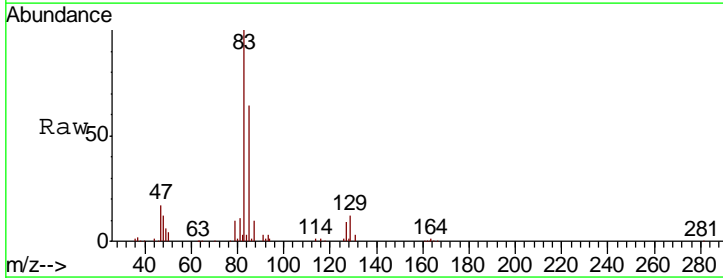
Instrument : MSVOA_U
 ClientSampled :

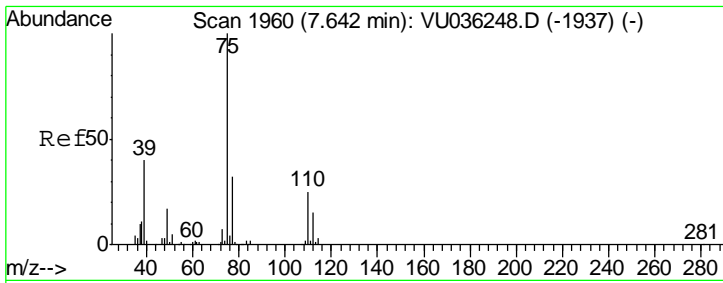
Tgt Ion	Resp	Lower	Upper
63	104759		
112	5.1	3.8	5.8



#38
 Bromodichloromethane
 Concen: 5.207 ug/L
 RT: 7.14 min Scan# 1805
 Delta R.T. 0.00 min
 Lab File: VU036262.D
 Acq: 17 Dec 2019 16:56

Tgt Ion	Resp	Lower	Upper
83	136896		
85	64.0	45.6	84.6
127	9.2	7.1	10.7

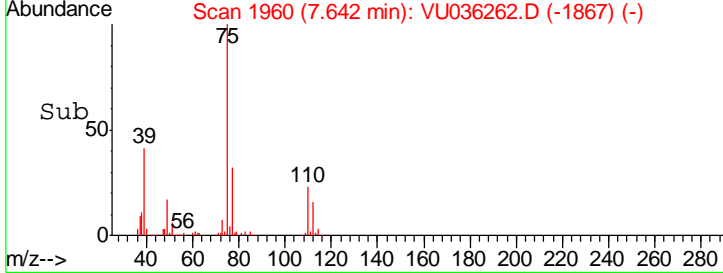
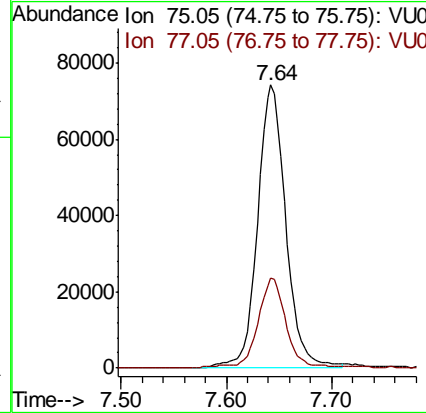
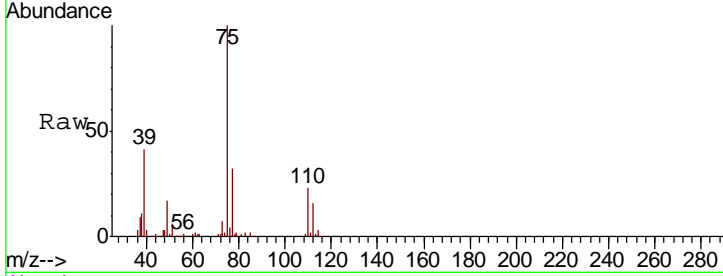




#39
 cis-1,3-Dichloropropene
 Concen: 5.047 ug/L
 RT: 7.64 min Scan# 1960
 Delta R.T. -0.00 min
 Lab File: VU036262.D
 Acq: 17 Dec 2019 16:56

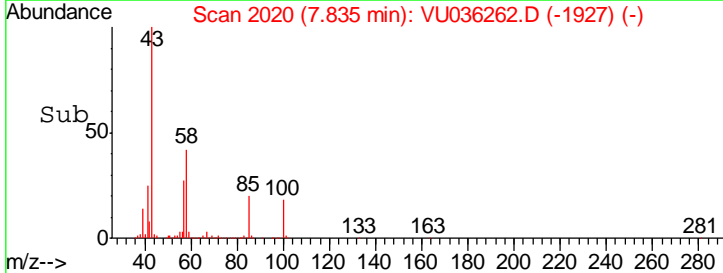
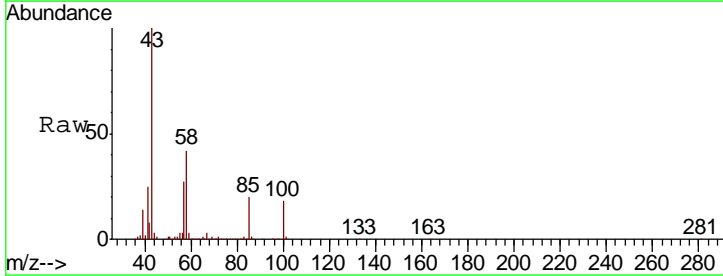
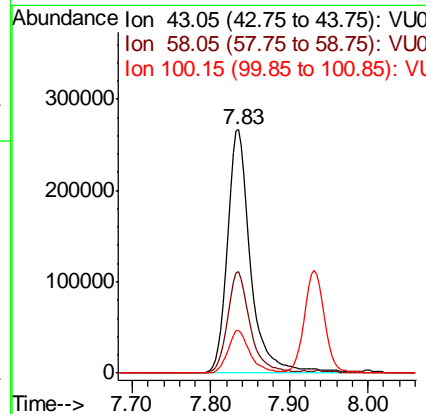
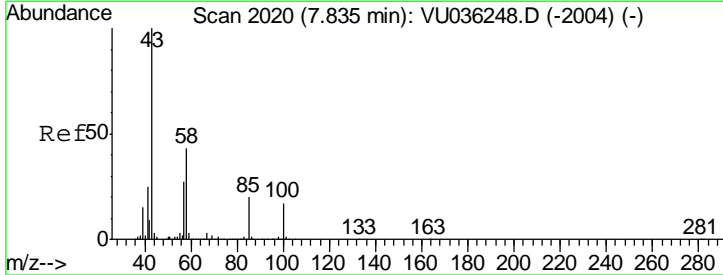
Instrument :
 MSVOA_U
 ClientSampled :

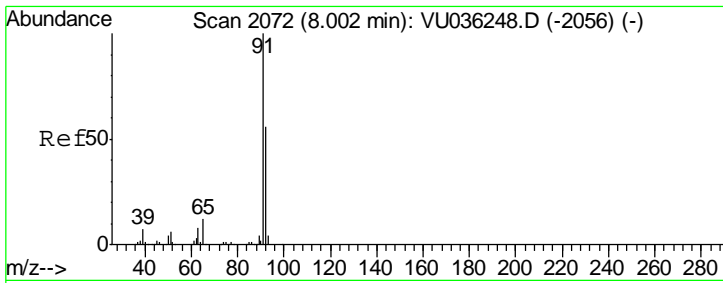
Tgt Ion	Resp	Lower	Upper
75	138887		
77	31.7	22.7	42.1



#40
 4-Methyl-2-pentanone
 Concen: 51.276 ug/L
 RT: 7.83 min Scan# 2020
 Delta R.T. -0.00 min
 Lab File: VU036262.D
 Acq: 17 Dec 2019 16:56

Tgt Ion	Resp	Lower	Upper
43	541760		
58	40.6	33.3	49.9
100	16.7	13.7	20.5

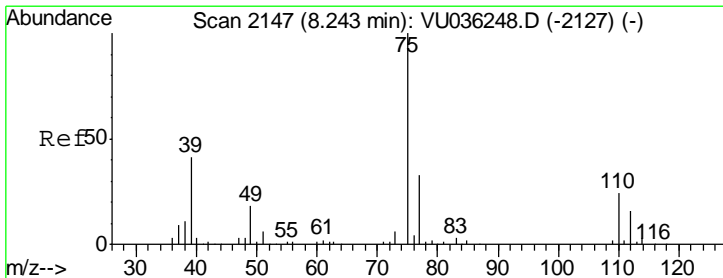
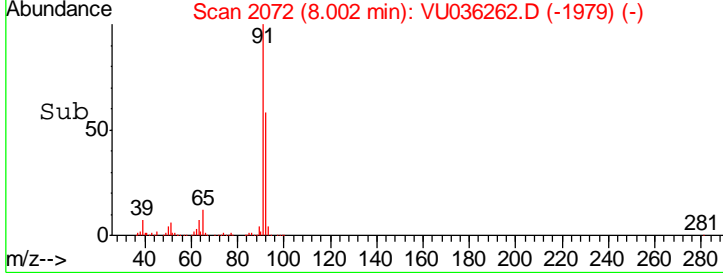
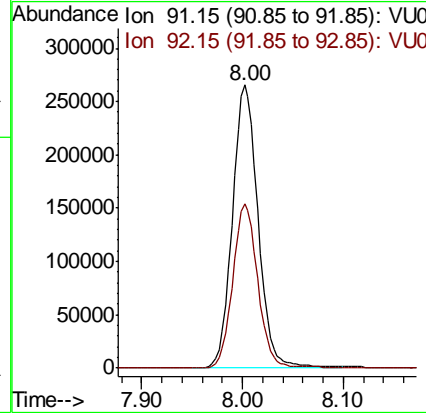
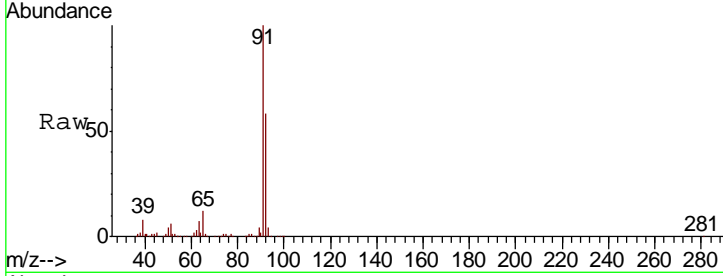




#42
 Toluene
 Concen: 5.559 ug/L
 RT: 8.00 min Scan# 2072
 Delta R.T. -0.00 min
 Lab File: VU036262.D
 Acq: 17 Dec 2019 16:56

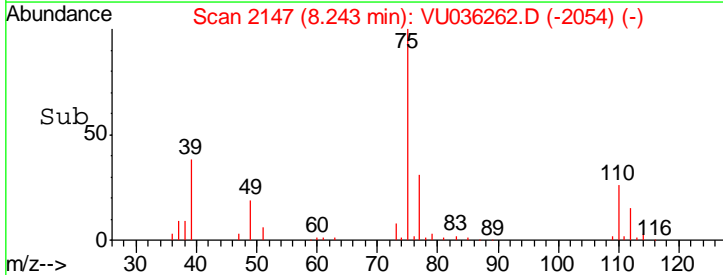
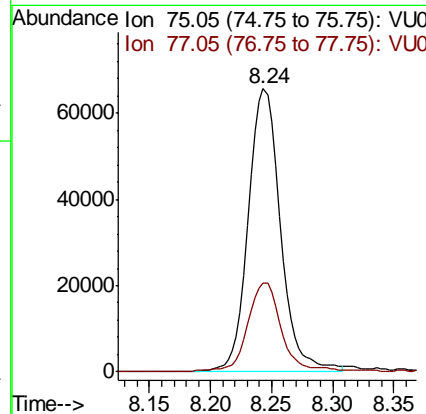
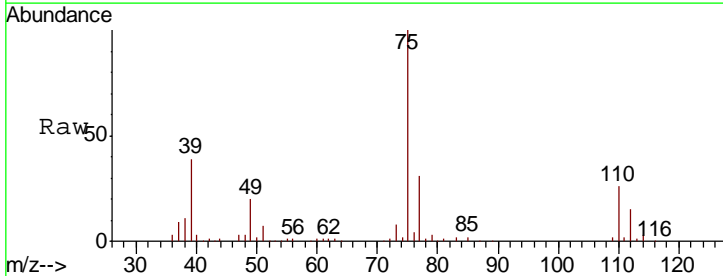
Instrument :
 MSVOA_U
 ClientSampled :

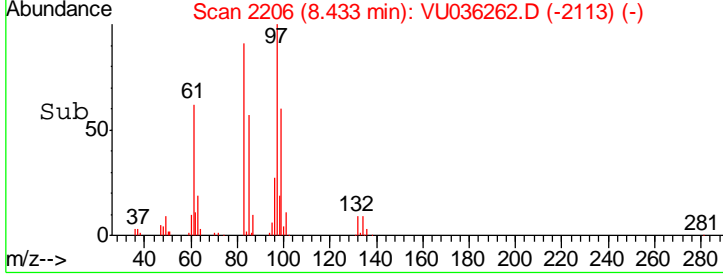
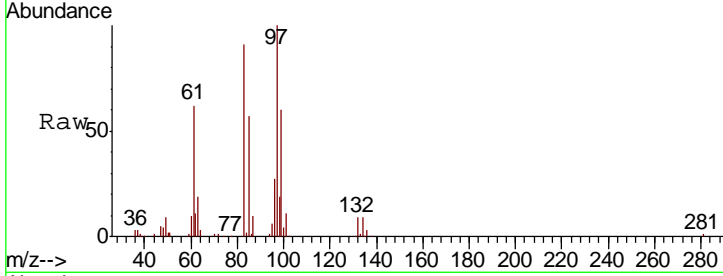
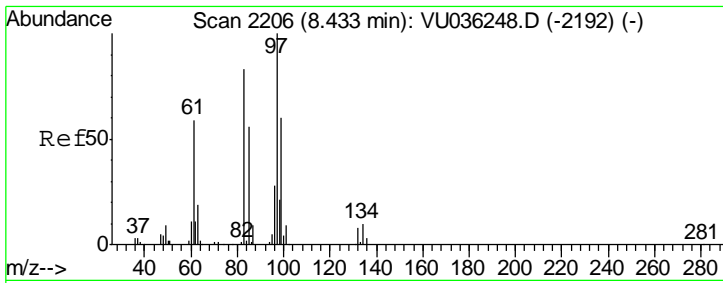
Tgt Ion	Resp	Lower	Upper
91	471782		
92	57.9	41.2	76.6



#44
 trans-1,3-Dichloropropene
 Concen: 5.181 ug/L
 RT: 8.24 min Scan# 2147
 Delta R.T. -0.00 min
 Lab File: VU036262.D
 Acq: 17 Dec 2019 16:56

Tgt Ion	Resp	Lower	Upper
75	119776		
77	31.5	22.1	41.1

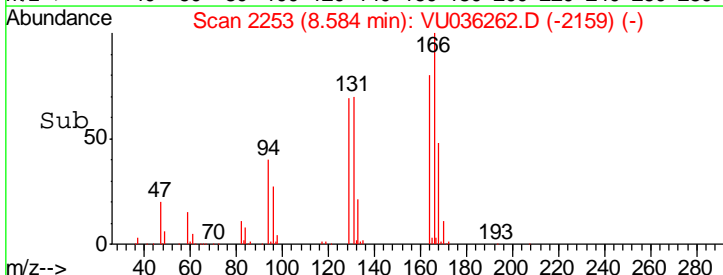
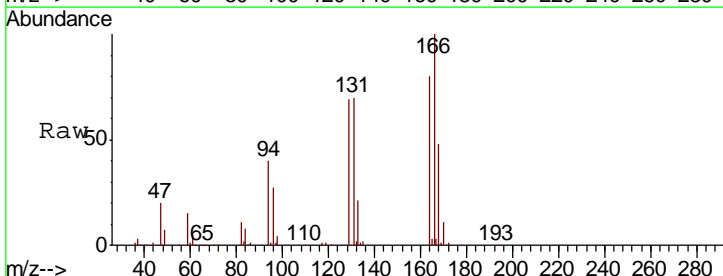
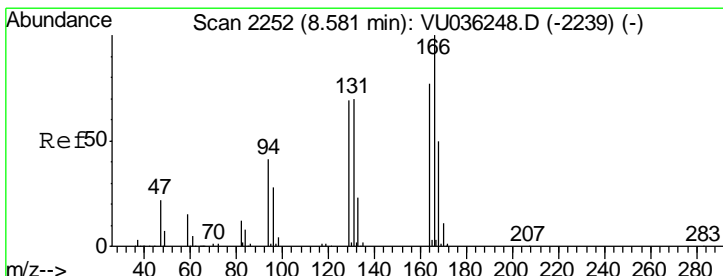
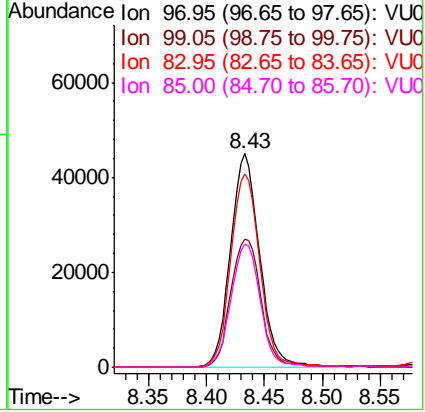




#45
 1,1,2-Trichloroethane
 Concen: 5.186 ug/L
 RT: 8.43 min Scan# 2206
 Delta R.T. -0.00 min
 Lab File: VU036262.D
 Acq: 17 Dec 2019 16:56

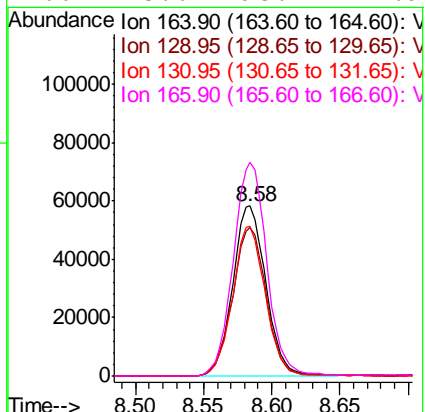
Instrument :
 MSVOA_U
 ClientSampled :

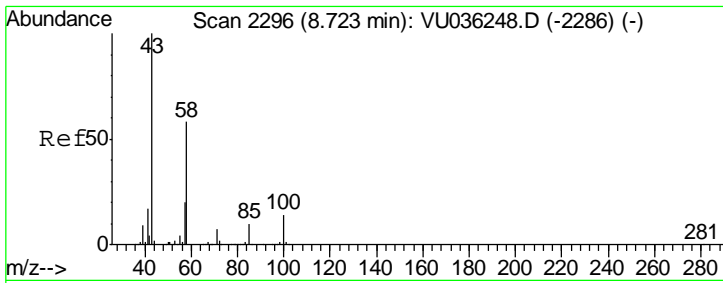
Tgt Ion	Resp	Lower	Upper
97	100		
99	59.9	46.1	85.5
83	90.8	65.9	122.3
85	57.4	43.1	80.1



#47
 Tetrachloroethene
 Concen: 5.360 ug/L
 RT: 8.58 min Scan# 2253
 Delta R.T. 0.00 min
 Lab File: VU036262.D
 Acq: 17 Dec 2019 16:56

Tgt Ion	Resp	Lower	Upper
164	100		
129	86.9	64.2	119.2
131	87.8	66.6	123.8
166	125.6	93.1	172.9

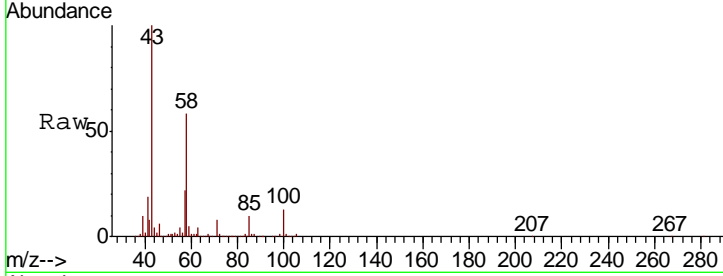




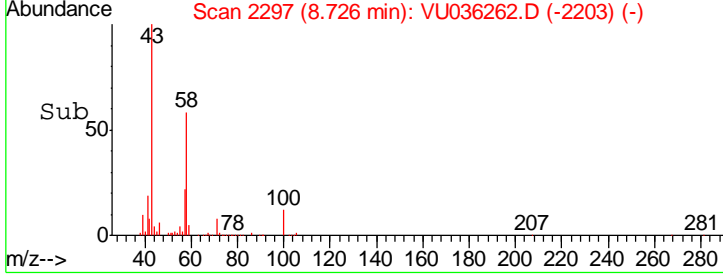
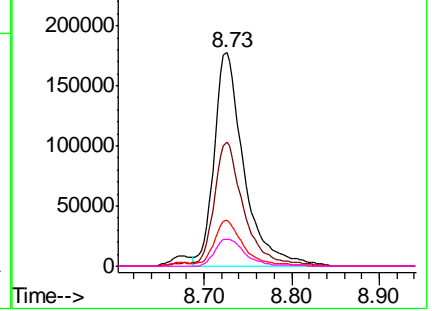
#48
 2-Hexanone
 Concen: 53.037 ug/L
 RT: 8.73 min Scan# 2297
 Delta R.T. 0.00 min
 Lab File: VU036262.D
 Acq: 17 Dec 2019 16:56

Instrument :
 MSVOA_U
 ClientSampled :

Tgt Ion	Resp	Lower	Upper
43	100		
58	59.0	46.2	69.2
57	20.9	16.2	24.4
100	12.8	10.2	15.4

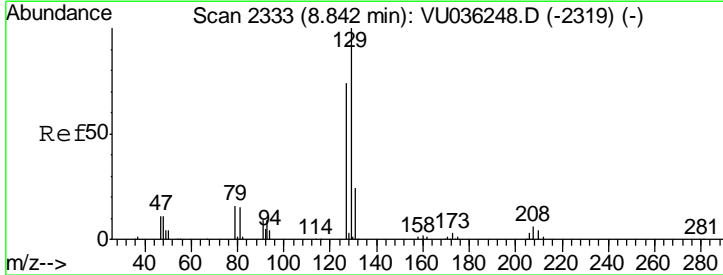


Abundance Ion 43.05 (42.75 to 43.75): VU0
 Ion 58.05 (57.75 to 58.75): VU0
 Ion 57.20 (56.90 to 57.90): VU0
 Ion 100.15 (99.85 to 100.85): VU0

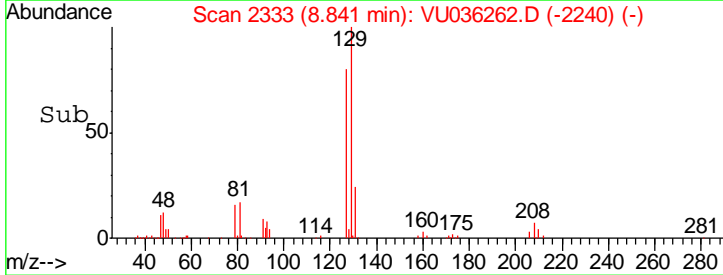
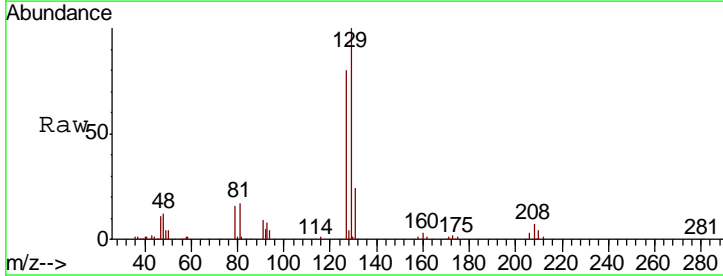
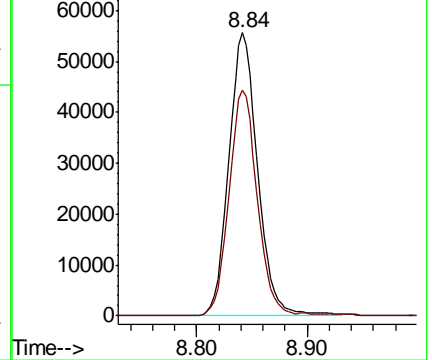


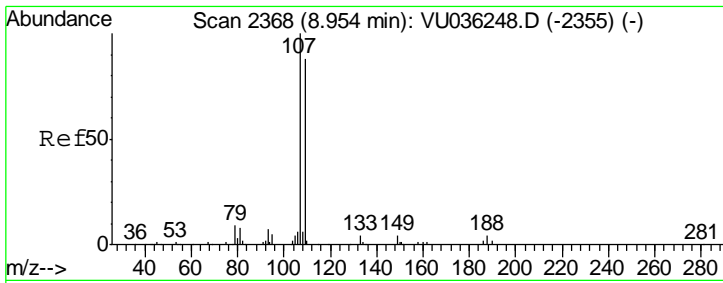
#49
 Dibromochloromethane
 Concen: 5.394 ug/L
 RT: 8.84 min Scan# 2333
 Delta R.T. -0.00 min
 Lab File: VU036262.D
 Acq: 17 Dec 2019 16:56

Tgt Ion	Resp	Lower	Upper
129	100		
127	79.8	52.6	97.6



Abundance Ion 128.95 (128.65 to 129.65): V
 Ion 126.90 (126.60 to 127.60): V

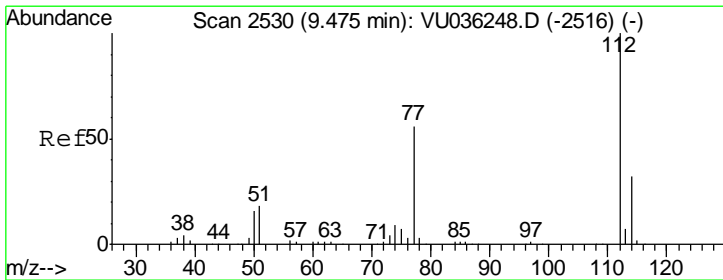
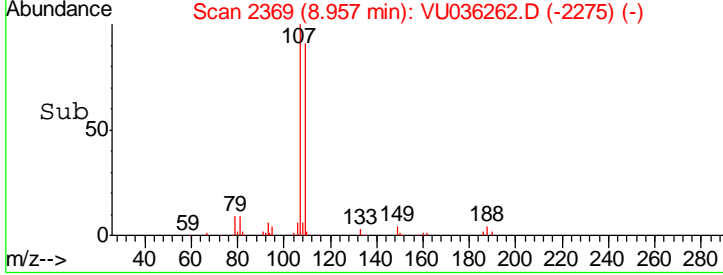
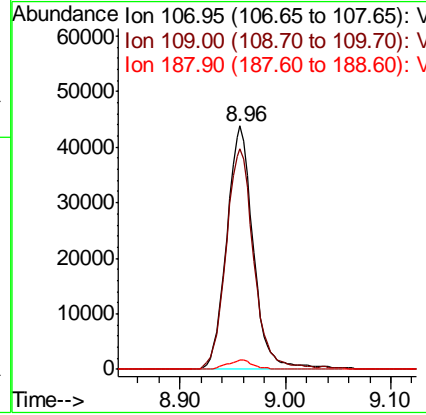
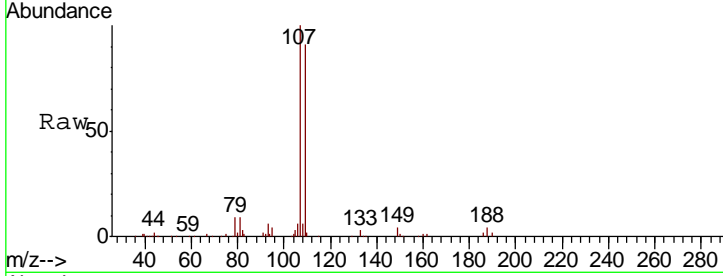




#50
 1,2-Dibromoethane
 Concen: 5.310 ug/L
 RT: 8.96 min Scan# 2369
 Delta R.T. 0.00 min
 Lab File: VU036262.D
 Acq: 17 Dec 2019 16:56

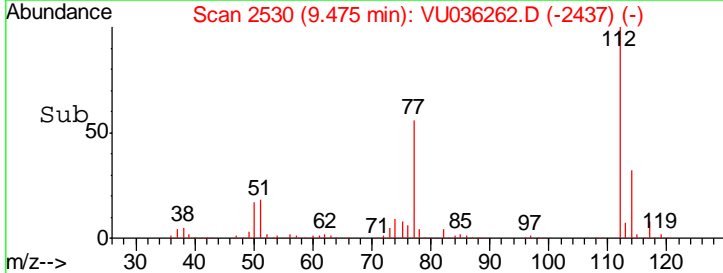
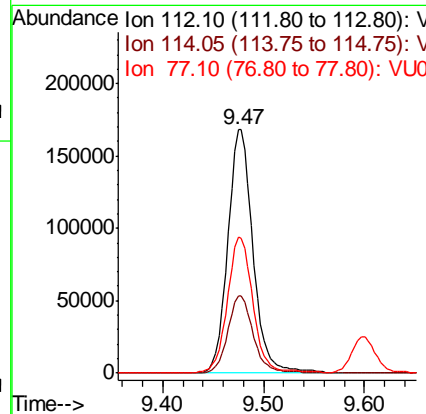
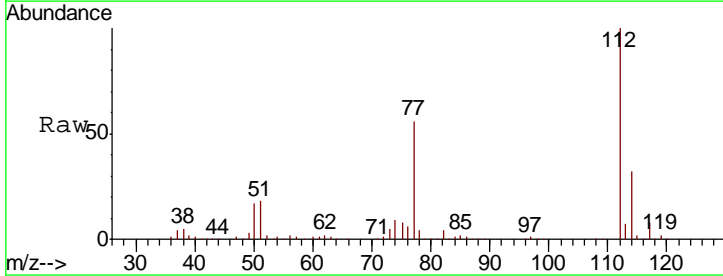
Instrument :
 MSVOA_U
 ClientSampled :

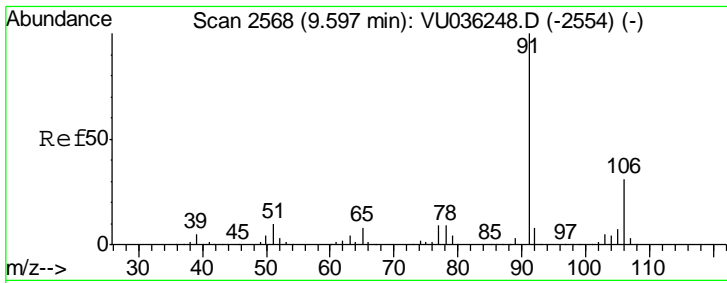
Tgt Ion	Resp	Lower	Upper
107	100		
109	90.6	67.5	125.4
188	3.7	3.1	4.7



#51
 Chlorobenzene
 Concen: 5.239 ug/L
 RT: 9.47 min Scan# 2530
 Delta R.T. -0.00 min
 Lab File: VU036262.D
 Acq: 17 Dec 2019 16:56

Tgt Ion	Resp	Lower	Upper
112	100		
114	31.6	23.2	43.2
77	55.9	46.5	69.7

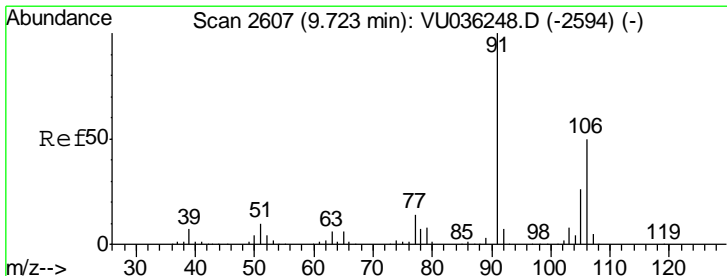
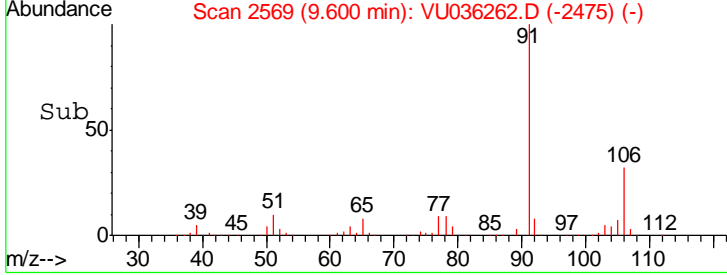
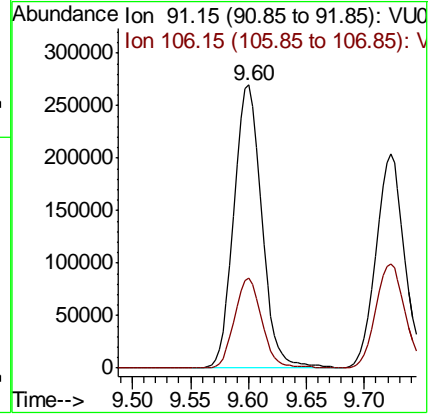
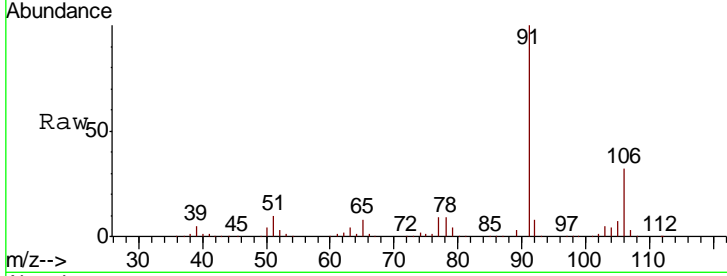




#52
Ethylbenzene
Concen: 5.263 ug/L
RT: 9.60 min Scan# 2569
Delta R.T. 0.00 min
Lab File: VU036262.D
Acq: 17 Dec 2019 16:56

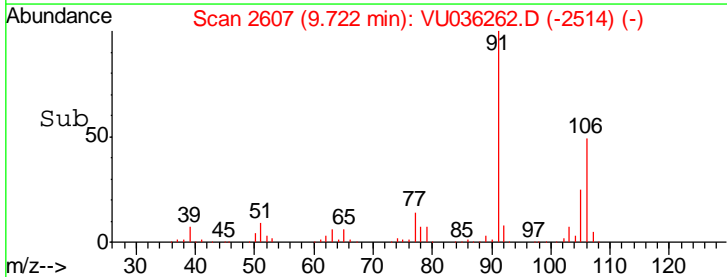
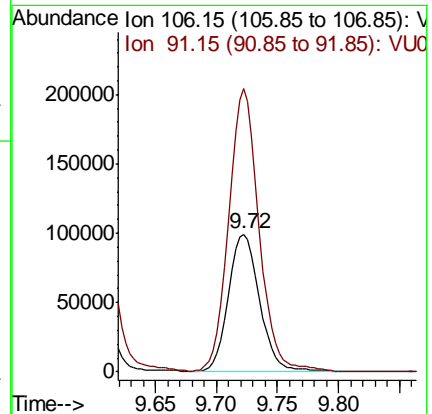
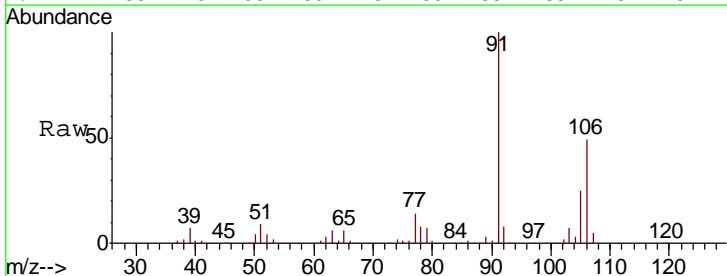
Instrument : MSVOA_U
ClientSampled :

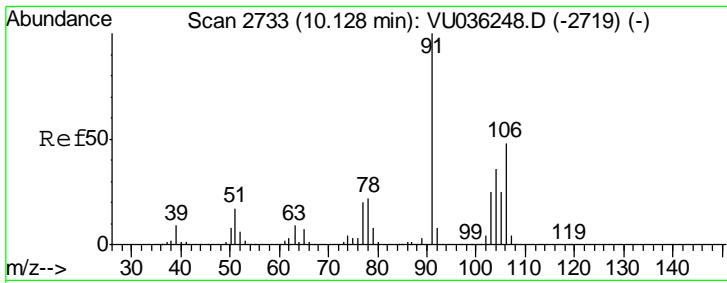
Tgt Ion: 91 Resp: 448633
Ion Ratio Lower Upper
91 100
106 31.8 22.0 41.0



#53
m,p-Xylene
Concen: 5.462 ug/L
RT: 9.72 min Scan# 2607
Delta R.T. -0.00 min
Lab File: VU036262.D
Acq: 17 Dec 2019 16:56

Tgt Ion: 106 Resp: 179397
Ion Ratio Lower Upper
106 100
91 205.0 138.7 257.7

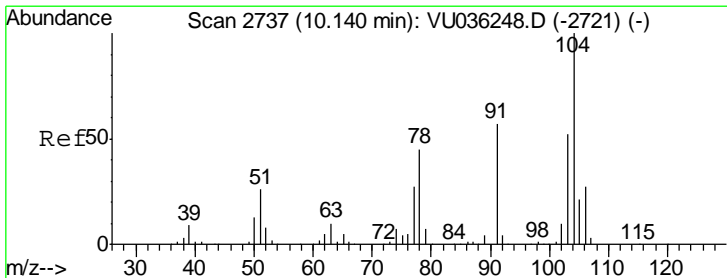
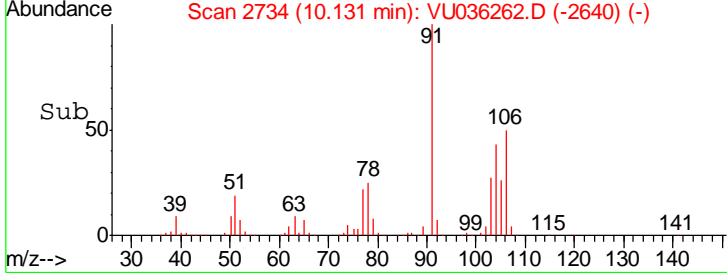
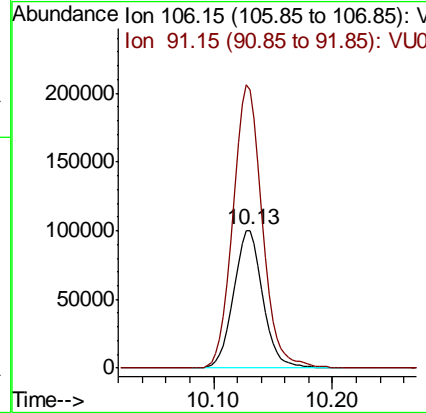
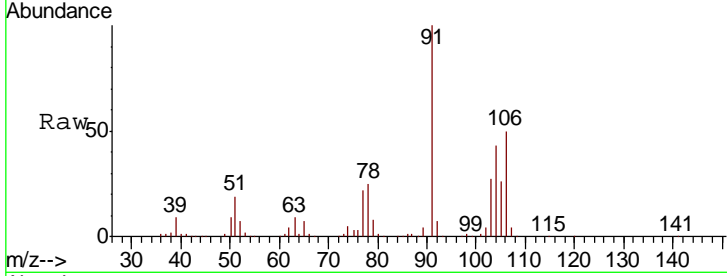




#54
 o-Xylene
 Concen: 5.368 ug/L
 RT: 10.13 min Scan# 2734
 Delta R.T. 0.00 min
 Lab File: VU036262.D
 Acq: 17 Dec 2019 16:56

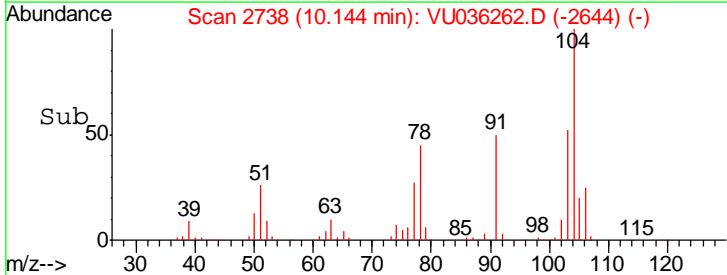
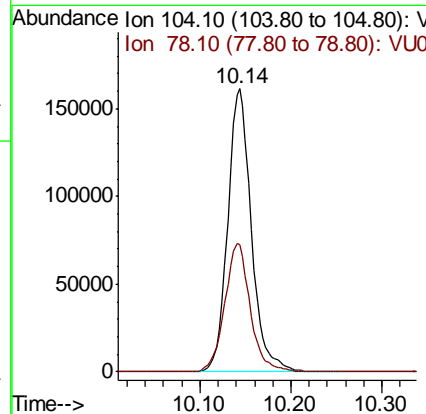
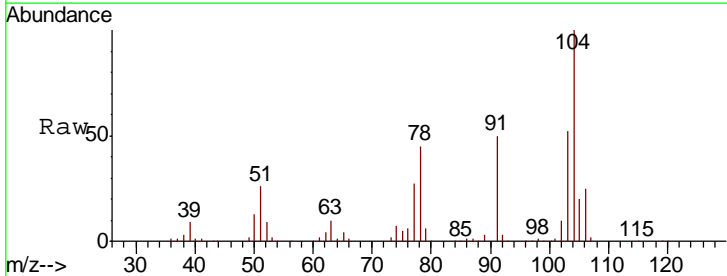
Instrument : MSVOA_U
 ClientSampled :

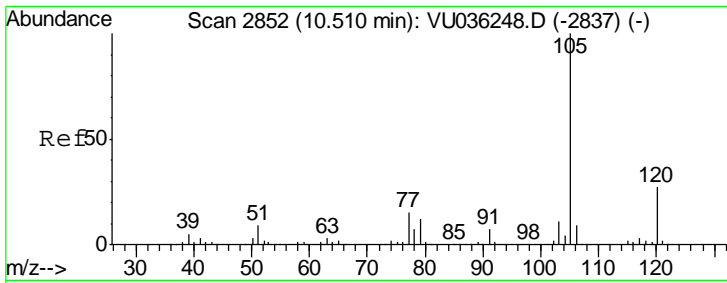
Tgt Ion:106 Resp: 170029
 Ion Ratio Lower Upper
 106 100
 91 202.0 152.8 283.8



#55
 Styrene
 Concen: 5.197 ug/L
 RT: 10.14 min Scan# 2738
 Delta R.T. 0.00 min
 Lab File: VU036262.D
 Acq: 17 Dec 2019 16:56

Tgt Ion:104 Resp: 291303
 Ion Ratio Lower Upper
 104 100
 78 44.8 32.1 59.5

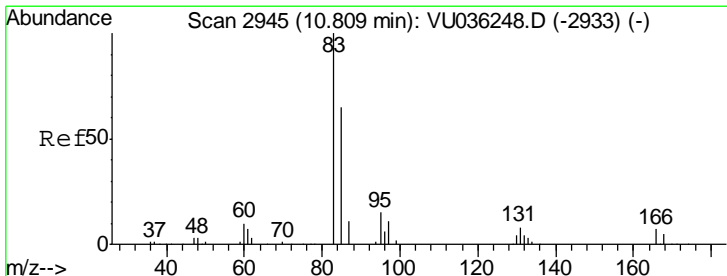
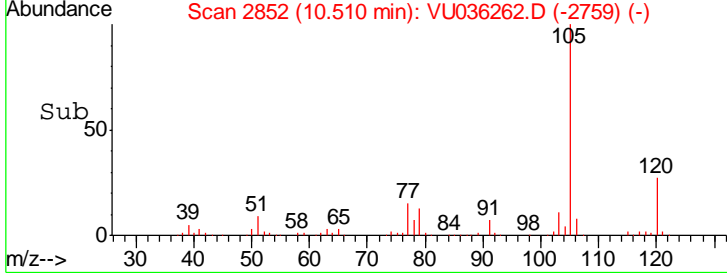
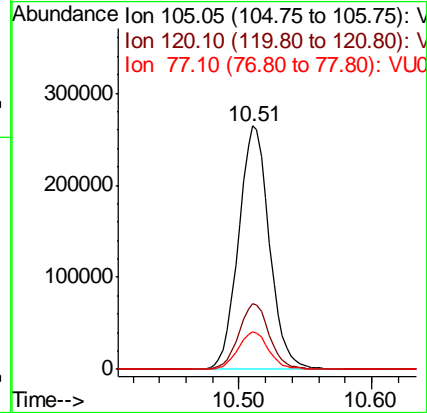
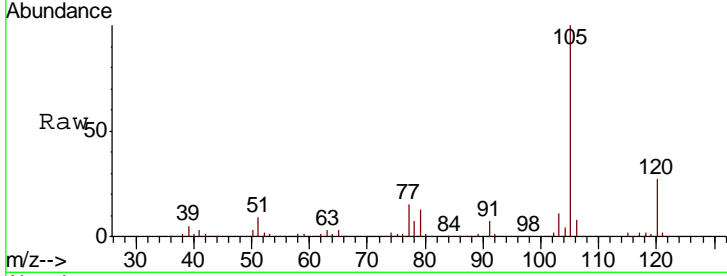




#56
 Isopropylbenzene
 Concen: 5.238 ug/L
 RT: 10.51 min Scan# 2852
 Delta R.T. -0.00 min
 Lab File: VU036262.D
 Acq: 17 Dec 2019 16:56

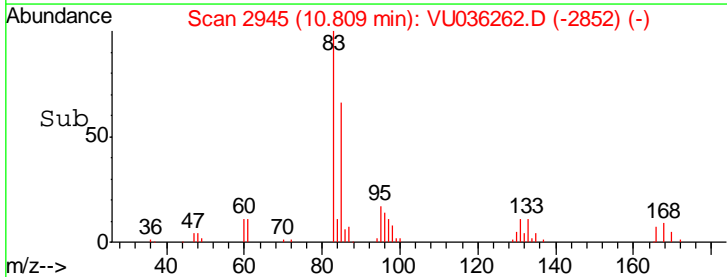
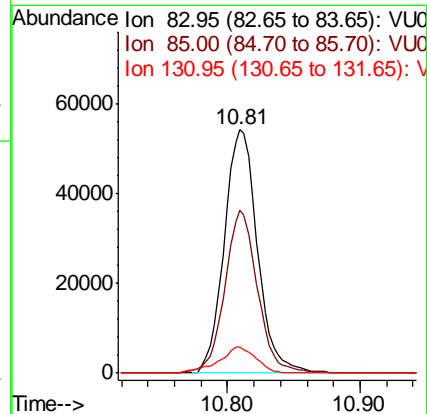
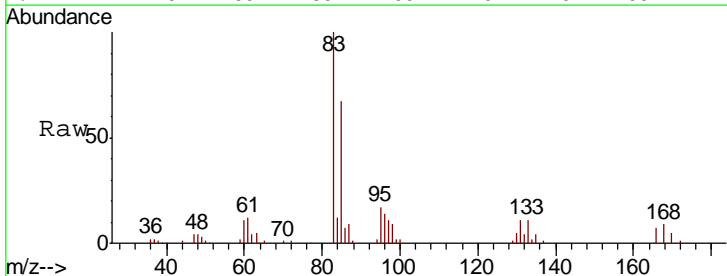
Instrument :
 MSVOA_U
 ClientSampled :

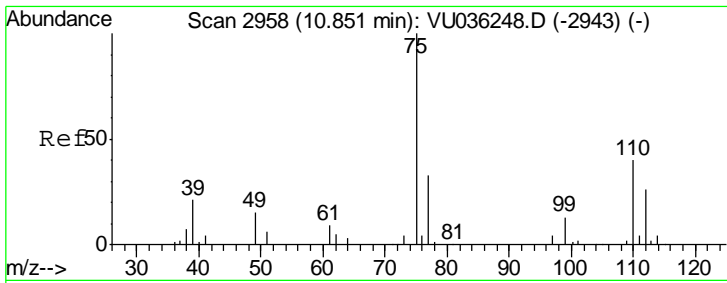
Tgt Ion	Resp	Lower	Upper
105	426087		
120	26.8	21.0	31.6
77	15.5	12.5	18.7



#58
 1,1,2,2-Tetrachloroethane
 Concen: 4.899 ug/L
 RT: 10.81 min Scan# 2945
 Delta R.T. -0.00 min
 Lab File: VU036262.D
 Acq: 17 Dec 2019 16:56

Tgt Ion	Resp	Lower	Upper
83	94398		
85	66.8	45.6	84.8
131	10.8	8.5	12.7

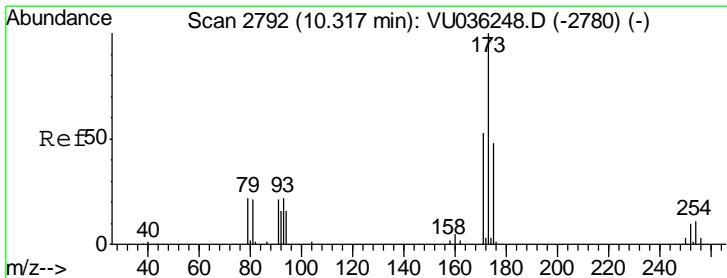
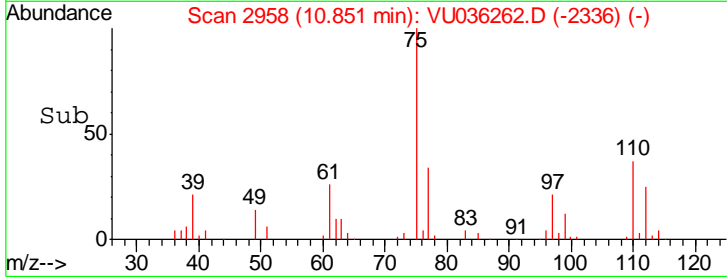
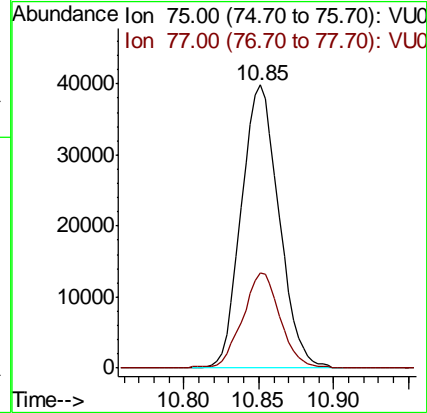
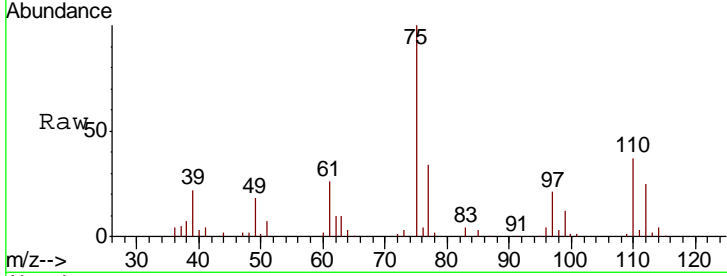




#59
 1,2,3-Trichloropropane
 Concen: 5.193 ug/L
 RT: 10.85 min Scan# 2958
 Delta R.T. -0.00 min
 Lab File: VU036262.D
 Acq: 17 Dec 2019 16:56

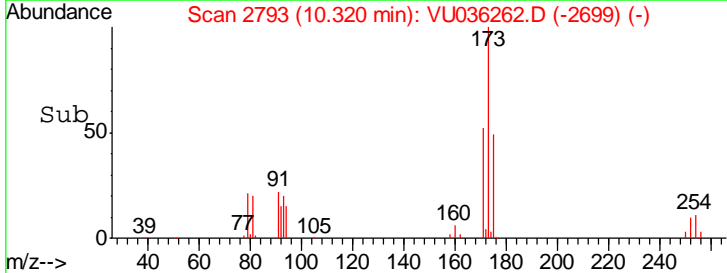
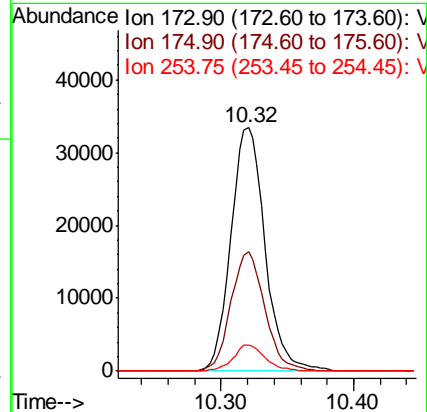
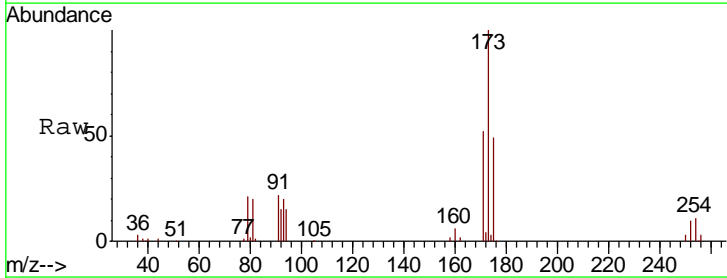
Instrument :
 MSVOA_U
 ClientSampled :

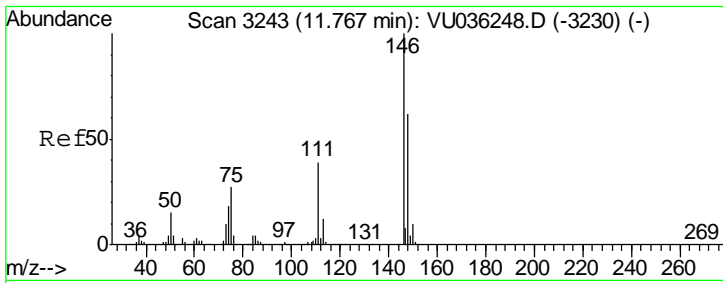
Tgt Ion: 75 Resp: 69720
 Ion Ratio Lower Upper
 75 100
 77 33.8 27.2 40.8



#61
 Bromoform
 Concen: 5.548 ug/L
 RT: 10.32 min Scan# 2793
 Delta R.T. 0.00 min
 Lab File: VU036262.D
 Acq: 17 Dec 2019 16:56

Tgt Ion: 173 Resp: 59737
 Ion Ratio Lower Upper
 173 100
 175 48.7 39.2 58.8
 254 10.1 7.8 11.6

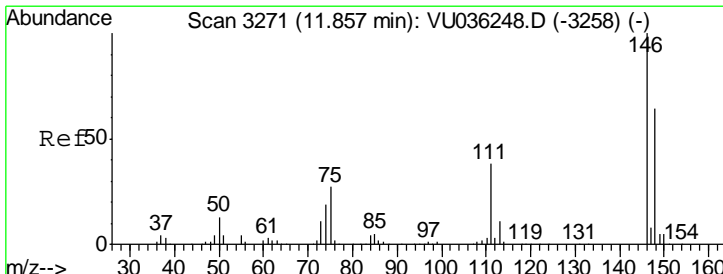
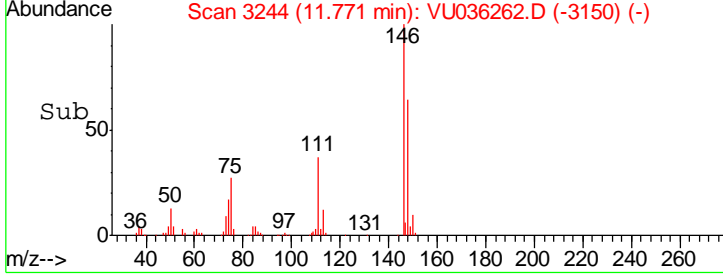
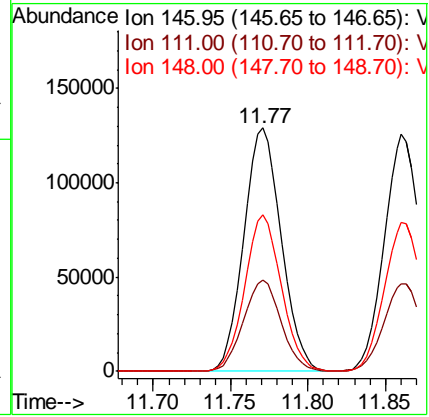
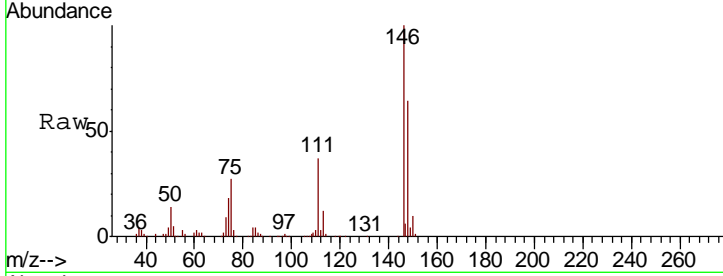




#62
 1,3-Dichlorobenzene
 Concen: 5.198 ug/L
 RT: 11.77 min Scan# 3244
 Delta R.T. 0.00 min
 Lab File: VU036262.D
 Acq: 17 Dec 2019 16:56

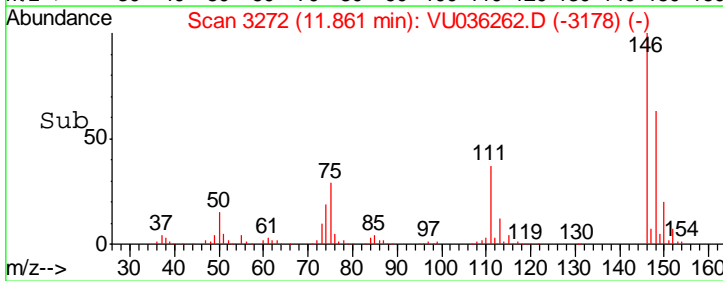
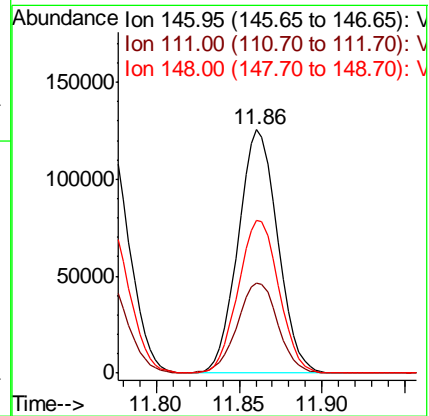
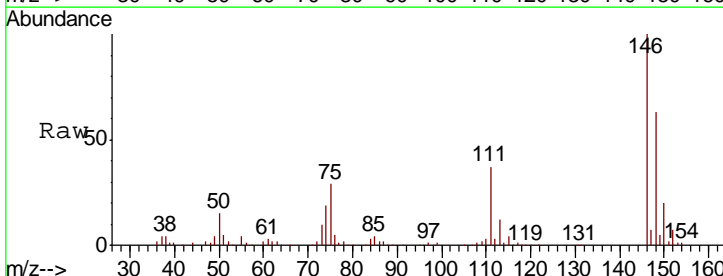
Instrument : MSVOA_U
 ClientSampled :

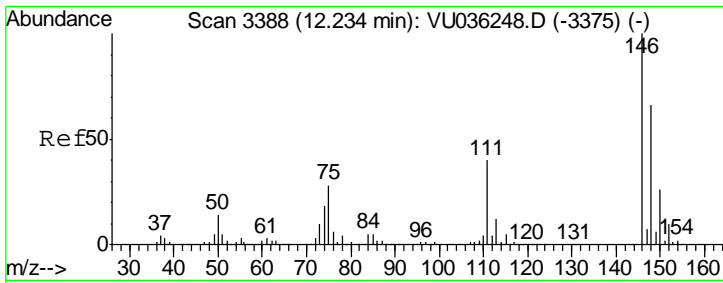
Tgt Ion	Resp	Lower	Upper
146	217522		
111	37.5	26.3	48.9
148	64.1	45.1	83.9



#63
 1,4-Dichlorobenzene
 Concen: 5.016 ug/L
 RT: 11.86 min Scan# 3272
 Delta R.T. 0.00 min
 Lab File: VU036262.D
 Acq: 17 Dec 2019 16:56

Tgt Ion	Resp	Lower	Upper
146	208179		
111	37.0	25.8	48.0
148	62.8	44.7	82.9

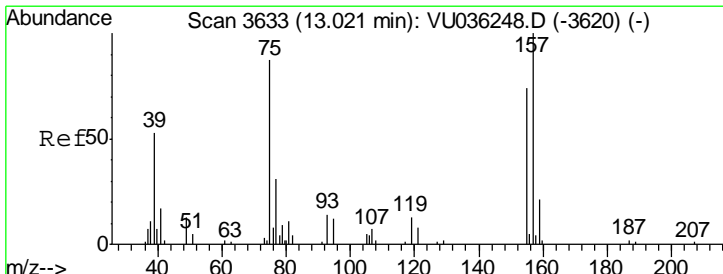
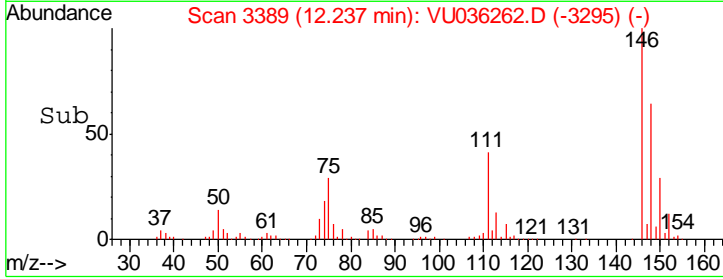
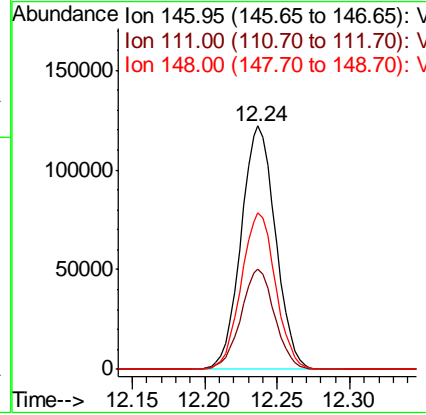
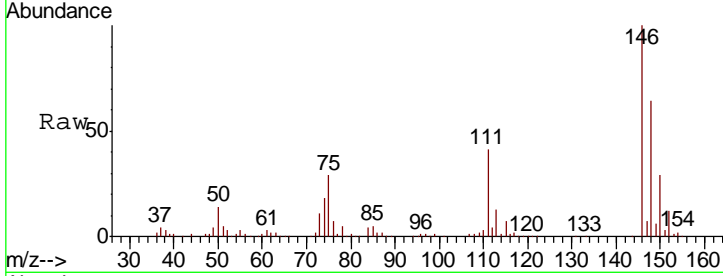




#65
 1,2-Dichlorobenzene
 Concen: 5.054 ug/L
 RT: 12.24 min Scan# 3389
 Delta R.T. 0.00 min
 Lab File: VU036262.D
 Acq: 17 Dec 2019 16:56

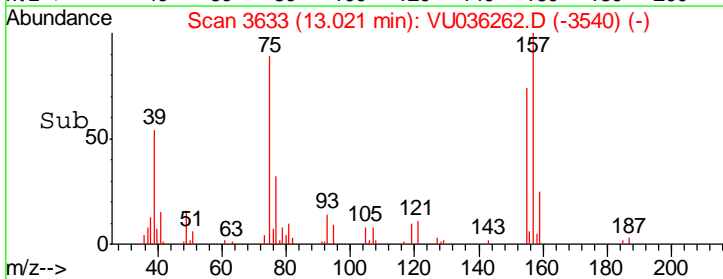
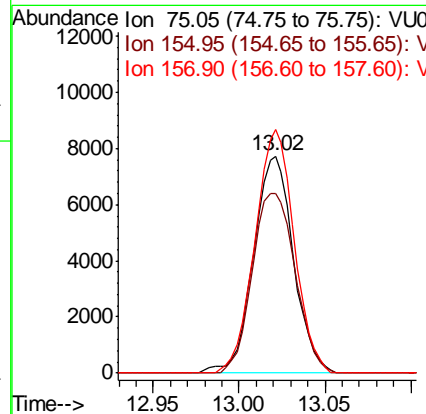
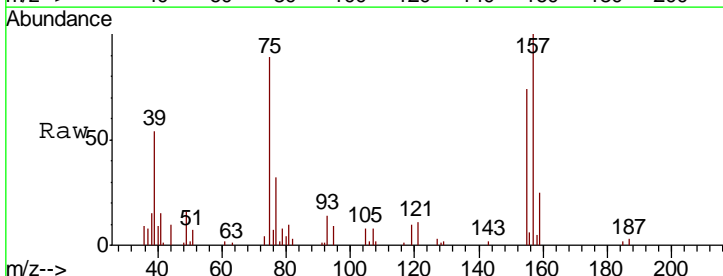
Instrument :
 MSVOA_U
 ClientSampled :

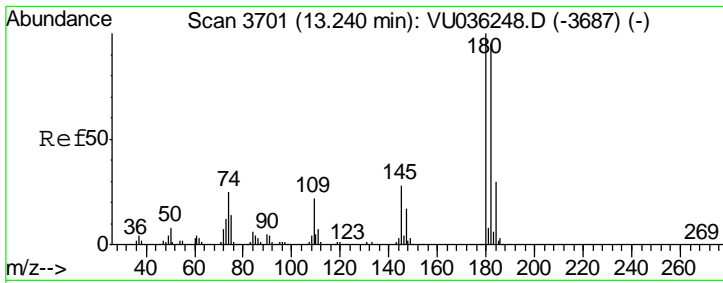
Tgt Ion	Resp	Lower	Upper
146	201489		
111	41.4	32.5	48.7
148	64.1	49.2	73.8



#66
 1,2-Dibromo-3-chloropropane
 Concen: 4.688 ug/L
 RT: 13.02 min Scan# 3633
 Delta R.T. -0.00 min
 Lab File: VU036262.D
 Acq: 17 Dec 2019 16:56

Tgt Ion	Resp	Lower	Upper
75	12415		
155	83.2	61.9	92.9
157	112.3	84.9	127.3

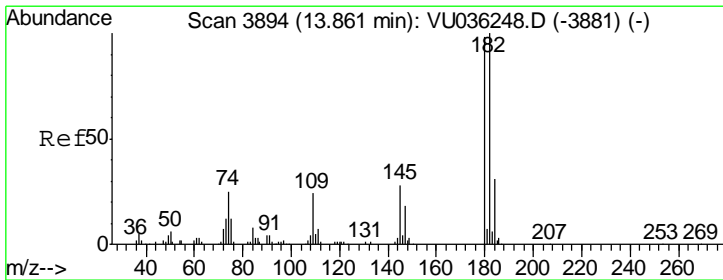
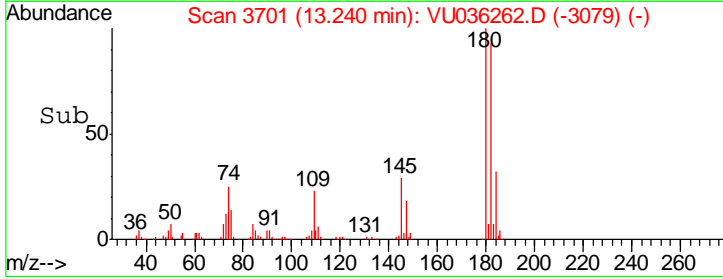
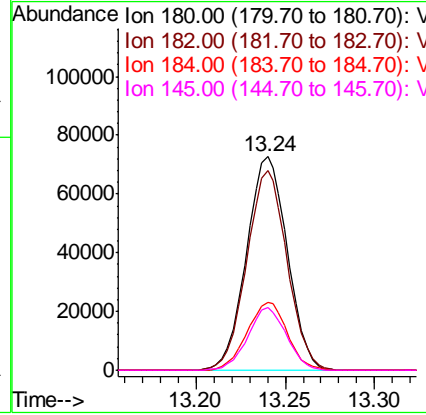
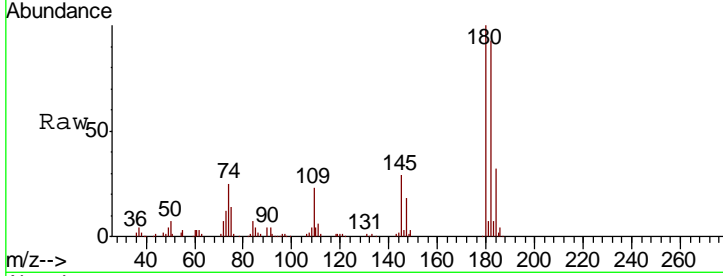




#67
 1,3,5-Trichlorobenzene
 Concen: 3.714 ug/L
 RT: 13.24 min Scan# 3701
 Delta R.T. -0.00 min
 Lab File: VU036262.D
 Acq: 17 Dec 2019 16:56

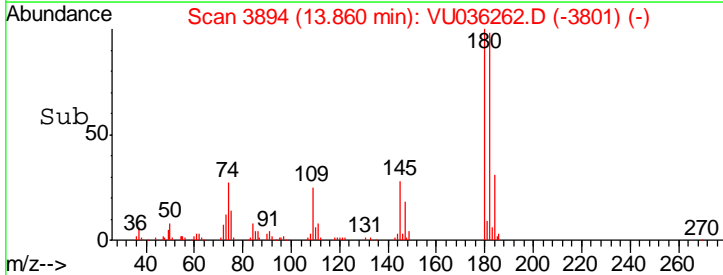
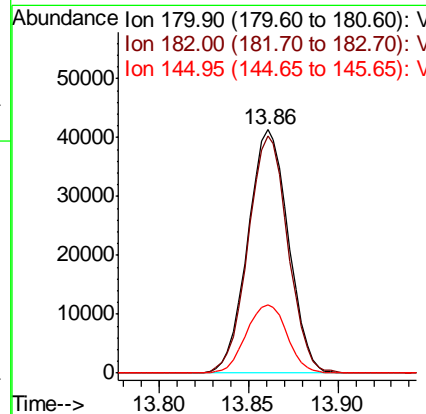
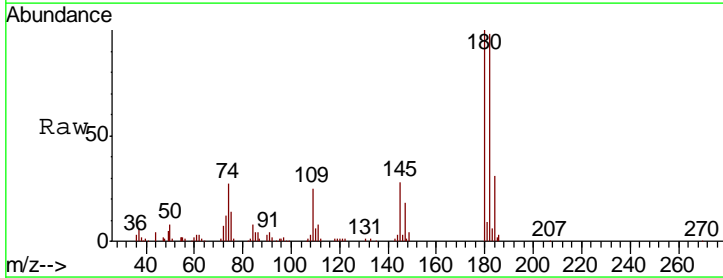
Instrument : MSVOA_U
 ClientSampled :

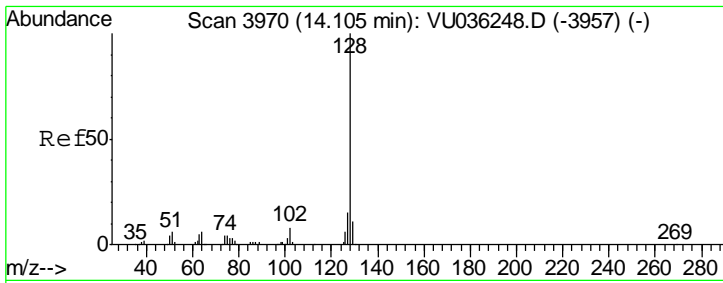
Tgt Ion	Resp	Lower	Upper
180	116456		
182	92.3	76.9	115.3
184	31.4	24.2	36.4
145	27.6	22.0	33.0



#68
 1,2,4-trichlorobenzene
 Concen: 3.186 ug/L
 RT: 13.86 min Scan# 3894
 Delta R.T. -0.00 min
 Lab File: VU036262.D
 Acq: 17 Dec 2019 16:56

Tgt Ion	Resp	Lower	Upper
180	65635		
182	95.7	75.3	112.9
145	28.3	22.7	34.1

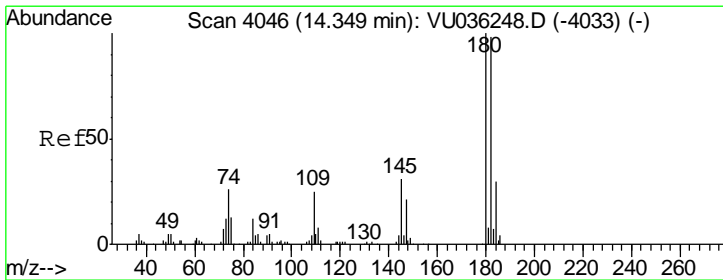
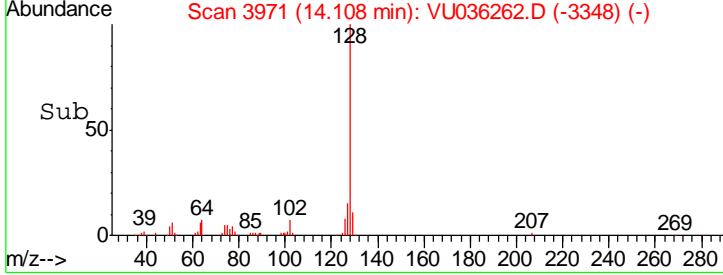
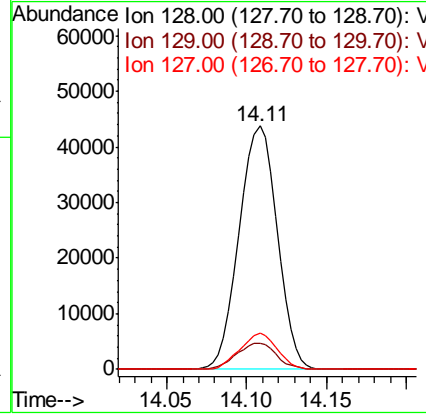
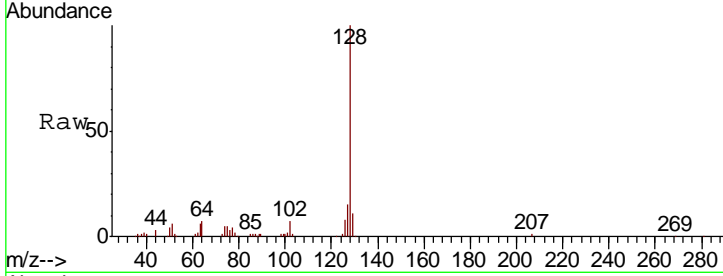




#69
 Naphthalene
 Concen: 2.711 ug/L
 RT: 14.11 min Scan# 3971
 Delta R.T. 0.00 min
 Lab File: VU036262.D
 Acq: 17 Dec 2019 16:56

Instrument : MSVOA_U
 ClientSampled :

Tgt Ion	Resp	Lower	Upper
128	71052		
129	11.2	8.4	12.6
127	14.4	11.5	17.3



#70
 1,2,3-Trichlorobenzene
 Concen: 3.324 ug/L
 RT: 14.35 min Scan# 4046
 Delta R.T. -0.00 min
 Lab File: VU036262.D
 Acq: 17 Dec 2019 16:56

Tgt Ion	Resp	Lower	Upper
180	66227		
182	94.9	77.0	115.6
145	29.4	24.9	37.3

